
INFECTIOUS DISEASES WEEKLY REPORT

TOKYO IDWR

Tokyo Metropolitan Infectious Disease Surveillance Center

14 March 2013 / Number 10

Surveillance System in Tokyo, Japan

The infectious diseases which all physicians must report

All physicians must report to health centers the incidence of the diseases which are shown at page one. Health centers electronically report the individual cases to Tokyo Metropolitan Infectious Disease Surveillance Center.

The infectious diseases required to be reported by the sentinels

The numbers of patients who visit the sentinel clinics or hospitals during a week are reported to health centers in Tokyo. And they electronically report the numbers to Tokyo Metropolitan Infectious Disease Surveillance Center. We have about 500 sentinel clinics and hospitals in Tokyo.

1st Week is early January and 52nd Week is end of December.

Tokyo Metropolitan Institute of Public Health

TEL:81-3-3363-3213 FAX:81-3-5332-7365

e-mail:idsc@tokyo-eiken.go.jp

URL:idsc.tokyo-eiken.go.jp/

Number of patients with the diseases which all physicians must report

Category	Diseases	Tokyo				Japan		
		7th	8th	9th	10th	Cum 2013	10th	Cum 2013
I	Ebola hemorrhagic fever							
	Crimean-Congo hemorrhagic fever							
	Smallpox							
	South American hemorrhagic fever							
	Plague							
	Marburg disease							
	Lassa fever							
II	Acute poliomyelitis							
	Tuberculosis	53	72	79	64	686	335	4,244
	Diphtheria							
	Severe Acute Respiratory Syndrome(SARS)							
III	Avian influenza H5N1							
	Cholera							
	Shigellosis			1		4	5	21
	Enterohemorrhagic Escherichia coli infection		1	3	3	10	14	126
	Typhoid fever				2	5	3	12
IV	Paratyphoid fever					2		6
	Hepatitis E			3		9	1	21
	West Nile fever							
	Hepatitis A		1	1		3		24
	Echinococcosis							3
	Yellow fever							
	Psittacosis					2		1
	Omsk hemorrhagic fever							
	Relapsing fever							
	Kyasanur forest disease							
	Q fever							
	Rabies							
	Coccidioidomycosis							
	Monkeypox							
	Severe Fever with Thrombocytopenia Syndrome							
	Hemorrhagic fever with renal syndrome							
	Western equine encephalitis							
	Tick-borne encephalitis							
	Anthrax							
	Chikungunya fever					1	2	4
	Scrub typhus(Tsutsugamushi disease)							31
	Dengue fever			1	2	5	4	24
	Eastern equine encephalitis							
	Avian influenza (excluding H5N1)							
	Nipah virus infection							
	Japanese spotted fever							1
	Japanese encephalitis							
	Hantavirus pulmonary syndrome							
	Herpes B virus infection							
	Glanders							
	Brucellosis							
	Venezuelan equine encephalitis							
	Hendra virus infection							
Epidemic typhus								
Botulism								
Malaria			2			3	11	
Tularemia								
Lyme disease								
Lyssavirus infection(excluding rabies)								
Rift valley fever								
Melioidosis			1		1		2	
Legionellosis			2		1	14	137	
Leptospirosis							1	
Rocky mountain spotted fever								

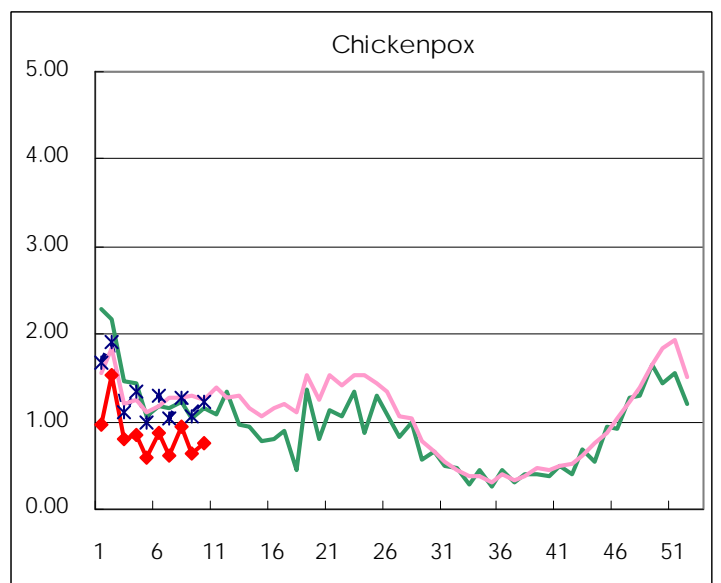
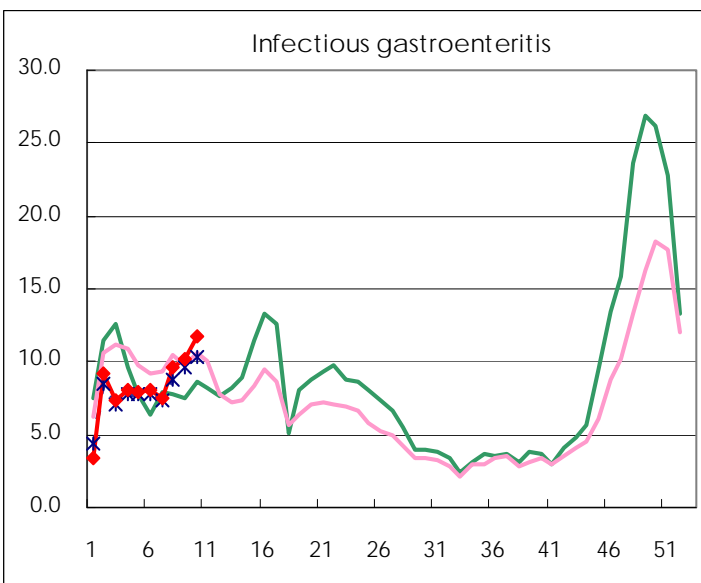
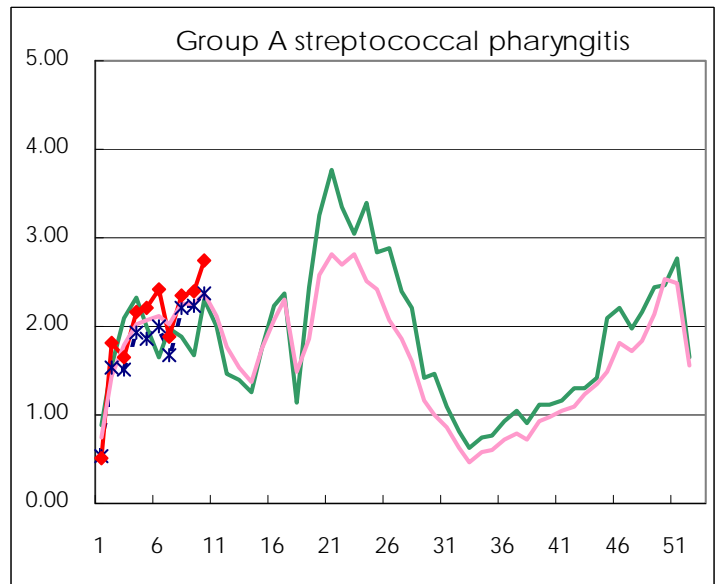
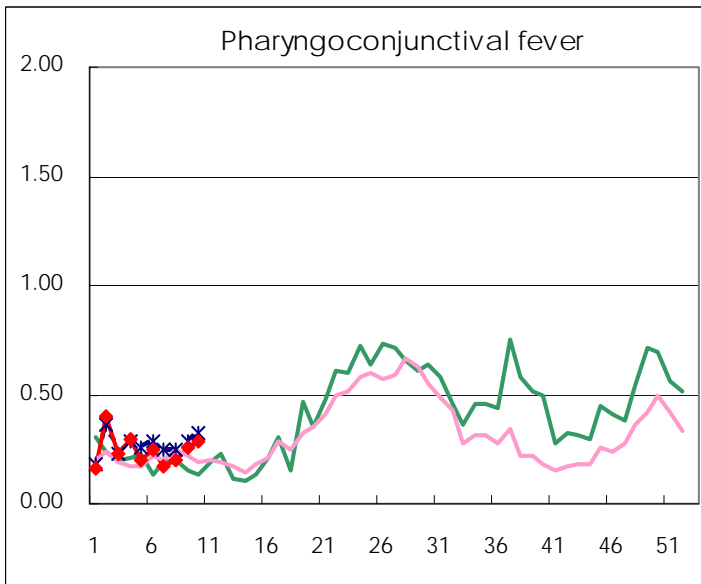
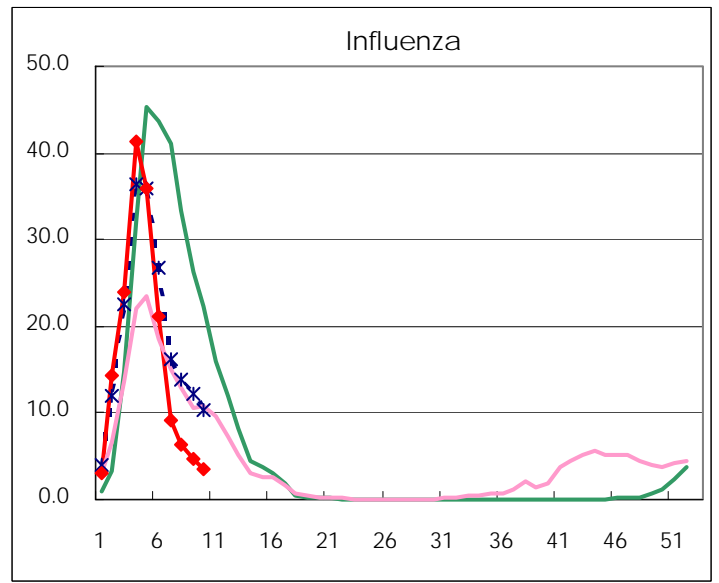
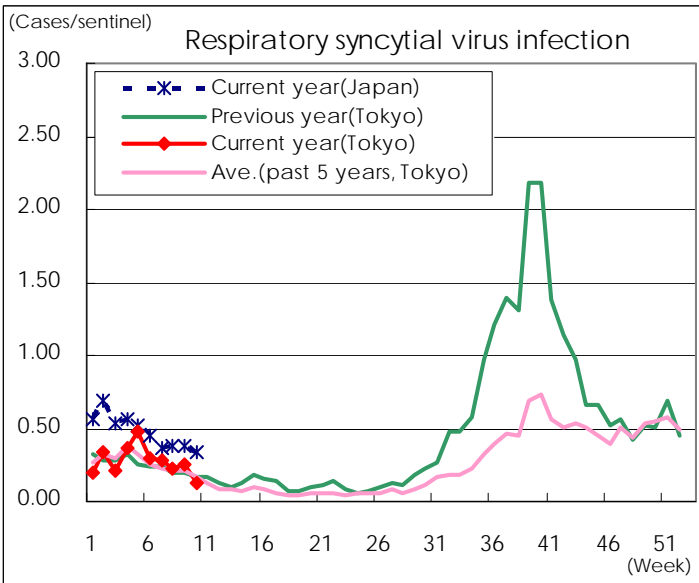
Category	Diseases	Tokyo				Cum 2013	Japan	
		7th	8th	9th	10th		10th	Cum 2013
V	Amebiasis	2	5	6	3	35	14	176
	Viral hepatitis(excluding hepatitis A and E)	1	2	1	2	13	1	40
	Acute encephalitis(excluding JE and WNE)		1	1		9	3	94
	Cryptosporidiosis							
	Creutzfeldt-Jakob disease				1	3	2	30
	Severe invasive streptococcal infections(TSLS)		1			5	4	41
	Acquired immunodeficiency syndrome (AIDS)	9	7	7	6	73	12	223
	Giardiasis				1	3	1	11
	Meningococcal meningitis							
	Congenital rubella syndrome						1	2
	Syphilis	6	5	4	8	57	15	162
	Tetanus					2	1	12
	Vancomycin-resistant S. aureus infection							
	Vancomycin-resistant Enterococcus infection	1	2			4	2	21
	Rubella	102	133	122	137	762	241	1,656
	Measles		2	2	3	20	12	60

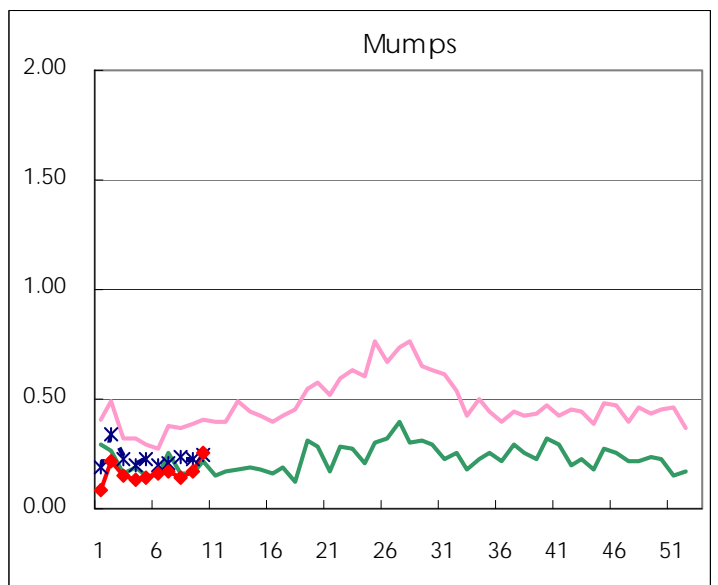
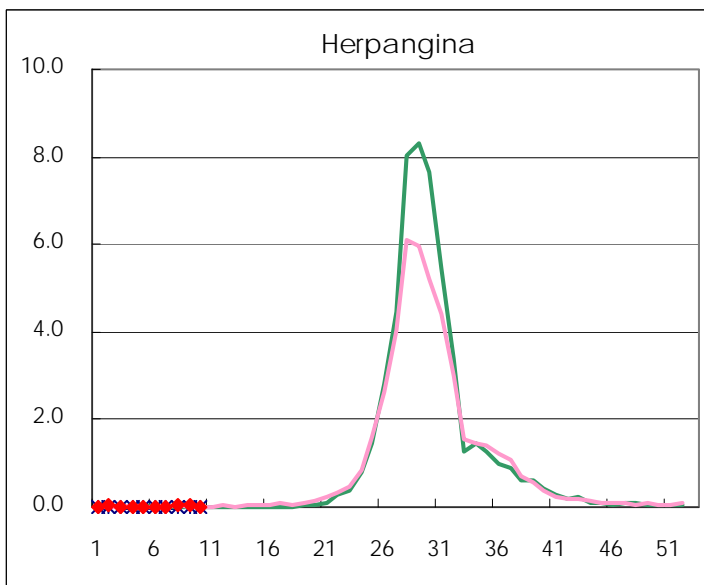
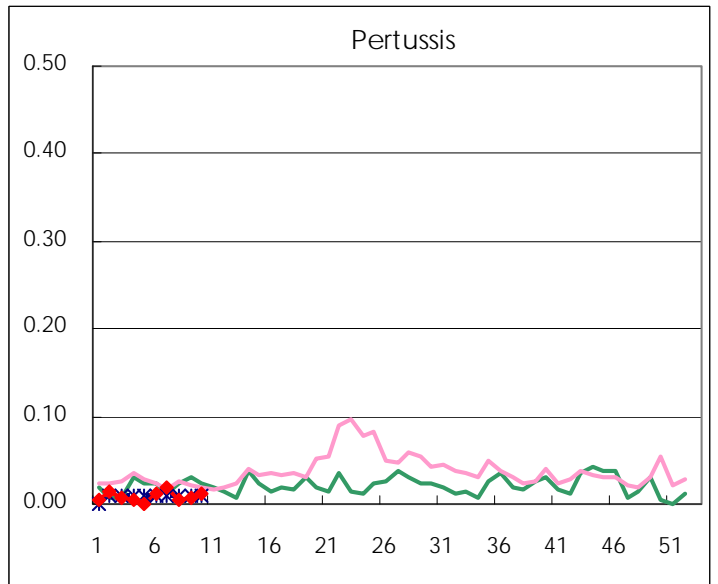
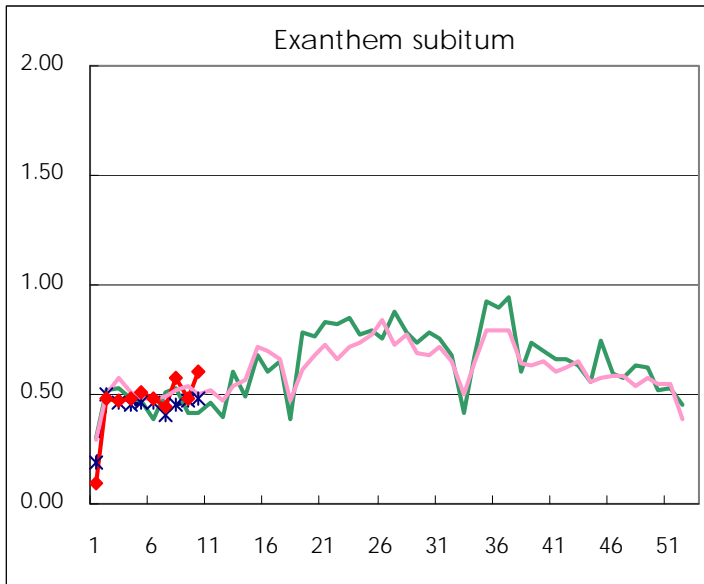
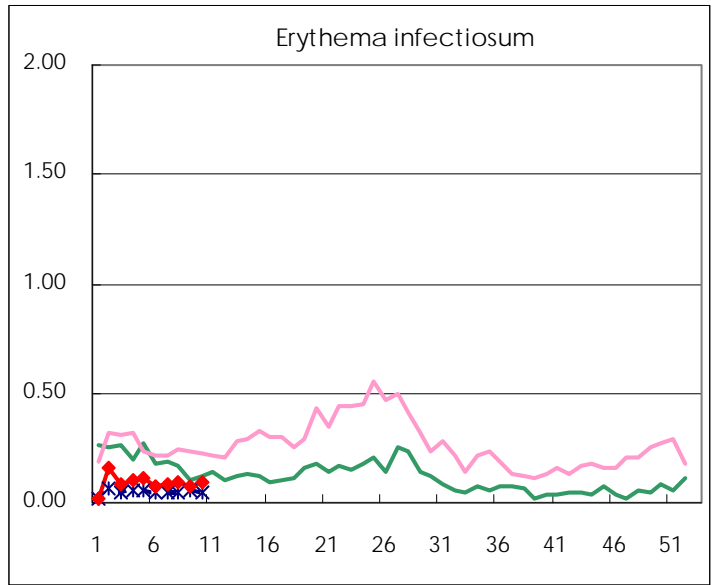
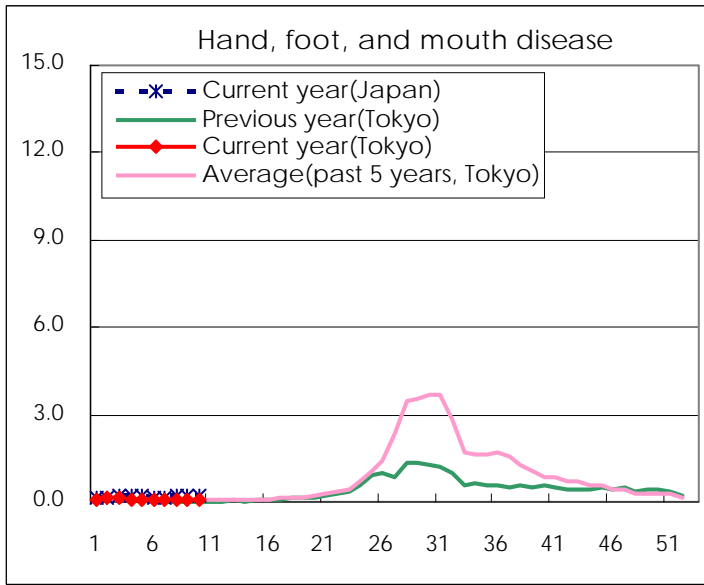
Number of patients with the diseases to be reported
by the designated clinics and hospitals

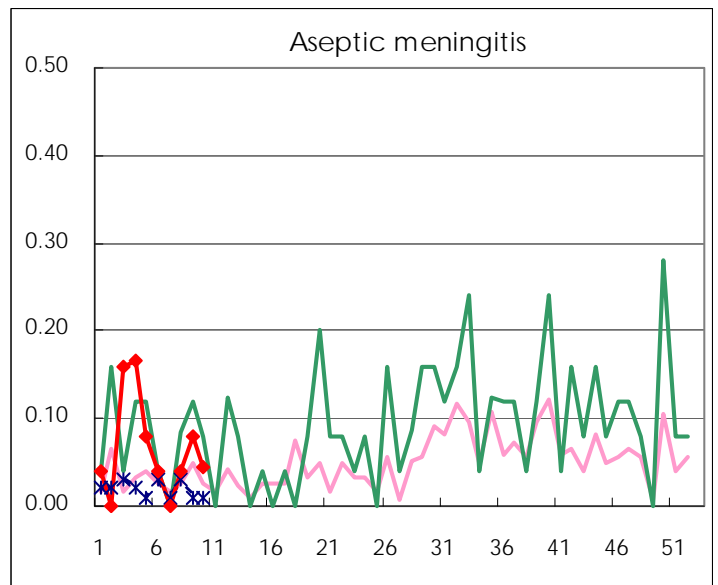
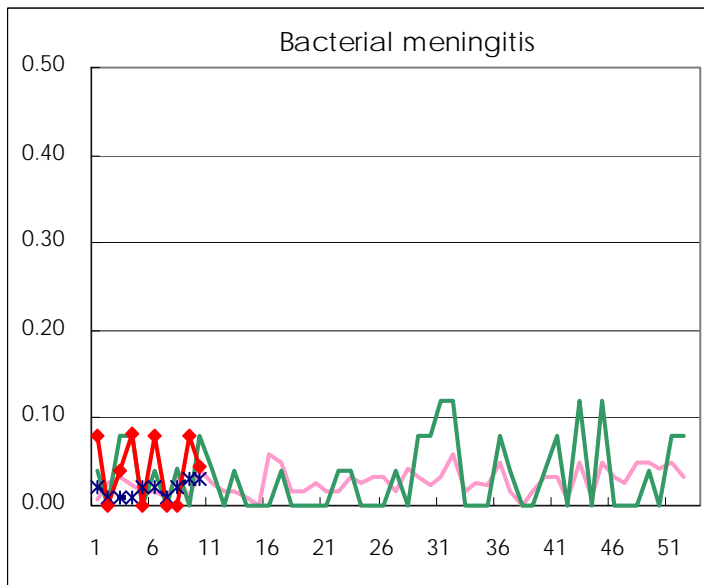
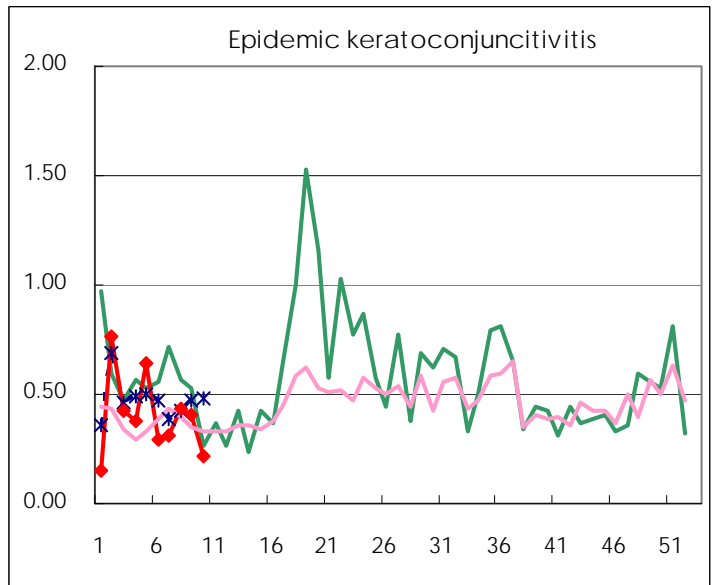
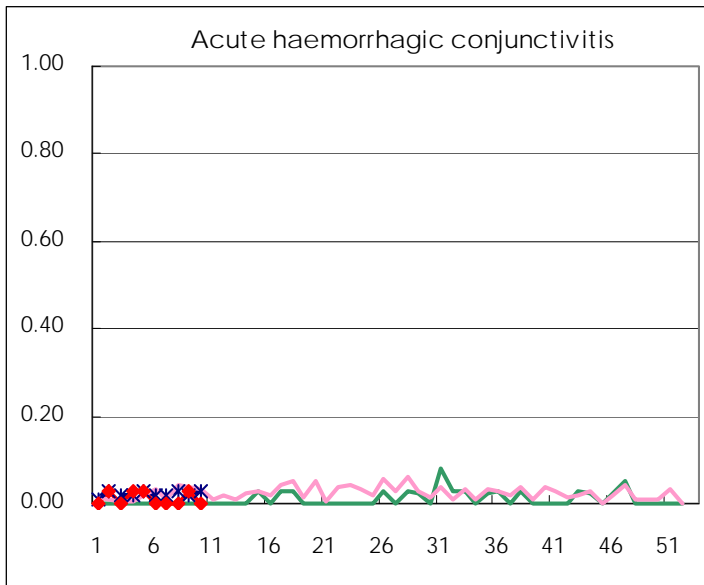
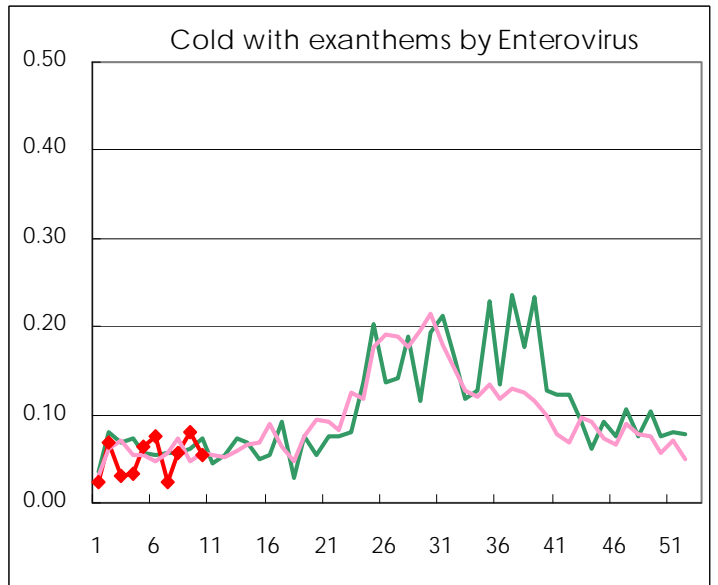
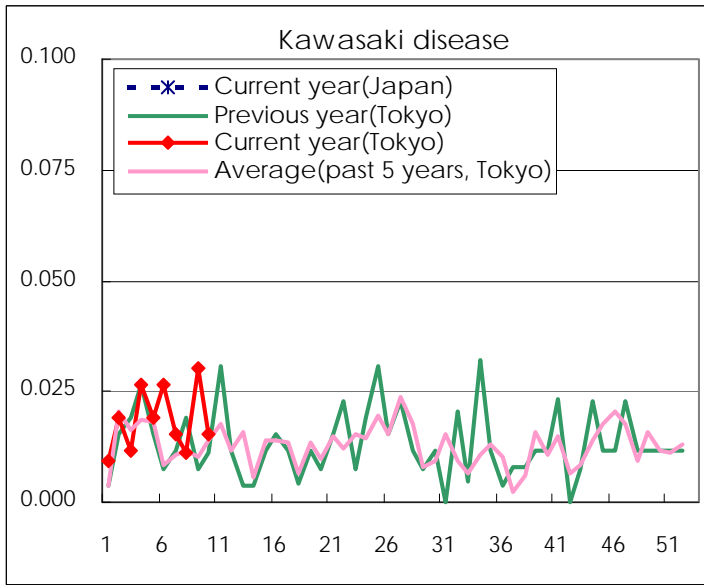
Diseases	Tokyo				
	7th	8th	9th	10th	/sentinel
Respiratory syncytial virus infection	73	59	67	34	0.13
Pharyngoconjunctival fever	46	53	67	75	0.29
Group A streptococcal pharyngitis	495	622	634	720	2.74
Infectious gastroenteritis	1,952	2,527	2,681	3,098	11.78
Chickenpox	159	250	168	199	0.76
Hand, foot, and mouth disease	14	14	24	19	0.07
Erythema infectiosum	21	26	21	24	0.09
Exanthem subitum	117	153	128	158	0.60
Pertussis	5	1	2	3	0.01
Herpangina	2	8	8	5	0.02
Mumps	44	38	46	68	0.26
Kawasaki disease	4	3	8	4	0.02
Cold with exanths by Enterovirus	6	15	21	14	0.05
Influenza	3,802	2,611	1,913	1,471	3.54
Acute hemorrhagic conjunctivitis			1		
Epidemic keratoconjunctivitis	12	16	15	8	0.22
Bacterial meningitis			2	1	0.05
Aseptic meningitis		1	2	1	0.05
Mycoplasma pneumonia	5	6	10	7	0.32
Chlamydial pneumonia (excluding psittacosis)	1		3		
Influenza-Associated Hospitalizations	33	18	17	4	0.18

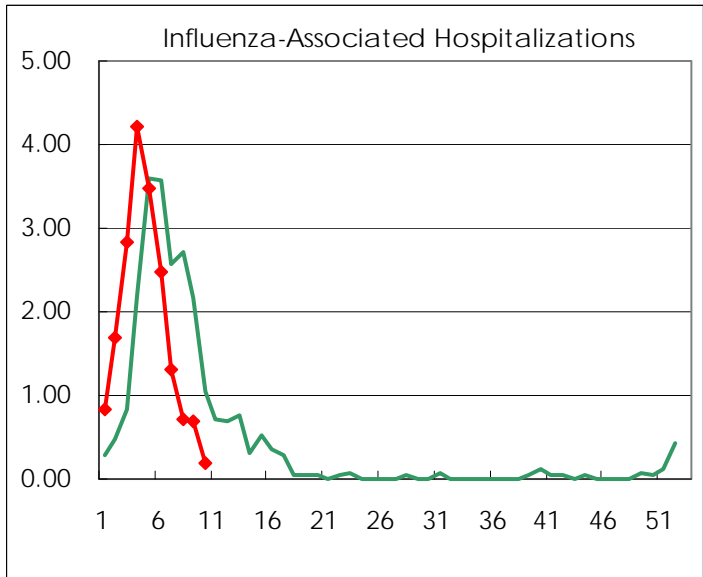
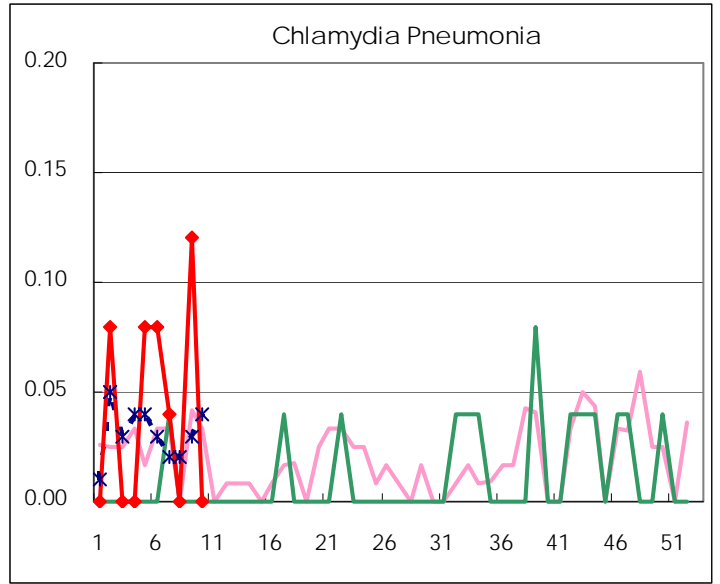
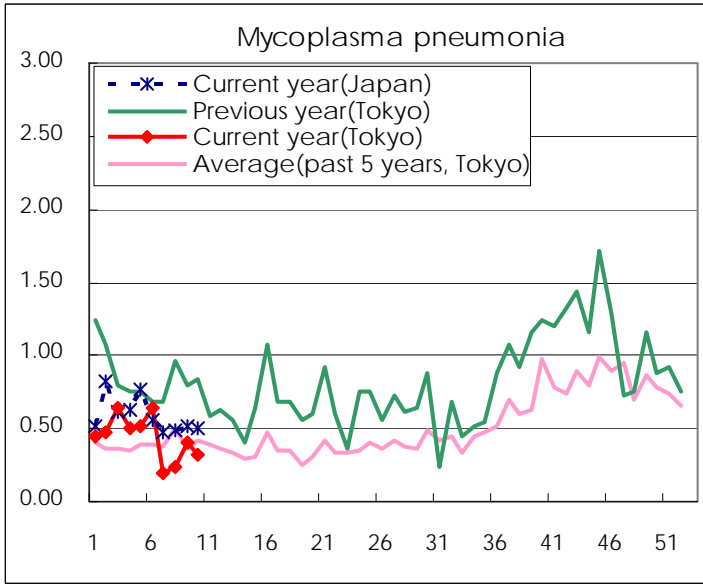
(Blank means 0.)

Disease Trend Graph (weekly reported cases per sentinel in comparison)









Number of sentinel facilities for weekly reporting		
Types of sentinels	Number of sentinels	Sentinels having reported
Pediatric	264	263
Influenza	419	415
Ophthalmic	39	37
Specially-designated	25	22

Tokyo Metropolitan Government
Infectious Disease Surveillance Center