

**23 March 2017 / Number 11**

## Surveillance System in Tokyo, Japan

The infectious diseases which all physicians must report

All physicians must report to health centers the incidence of the diseases which are shown at page one. Health centers electronically report the individual cases to Tokyo Metropolitan Infectious Disease Surveillance Center.

The infectious diseases required to be reported by the sentinels

The numbers of patients who visit the sentinel clinics or hospitals during a week are reported to health centers in Tokyo. And they electronically report the numbers to Tokyo Metropolitan Infectious Disease Surveillance Center. We have about 500 sentinel clinics and hospitals in Tokyo.

Tokyo Metropolitan Institute of Public Health

TEL:81-3-3363-3213 FAX:81-3-5332-7365

e-mail:[www@tokyo-eiken.go.jp](mailto:www@tokyo-eiken.go.jp)

URL:[idsc.tokyo-eiken.go.jp/](http://idsc.tokyo-eiken.go.jp/)

---

Number of patients with the diseases which all physicians must report

Category	Diseases	Tokyo					Japan	
		8th	9th	10th	11th	Cum 2017	11th	Cum 2017
I	Ebola hemorrhagic fever							
	Crimean-Congo hemorrhagic fever							
	Smallpox							
	South American hemorrhagic fever							
	Plague							
	Marburg disease							
	Lassa fever							
II	Acute poliomyelitis							
	Tuberculosis	75	68	54	51	675	313	4,300
	Diphtheria							
	Severe Acute Respiratory Syndrome(SARS)							
	Middle East Respiratory Syndrome (MERS)							
	Avian influenza H5N1							
	Avian influenza H7N9							
III	Cholera							
	Shigellosis	1		1		10		35
	Enterohemorrhagic Escherichia coli infection		2		2	13	32	146
	Typhoid fever					1	1	5
	Paratyphoid fever			1		1		3
IV	Hepatitis E	2	4		2	15	7	81
	West Nile fever							
	Hepatitis A	1	6	5	6	24	5	50
	Echinococcosis							6
	Yellow fever							
	Psittacosis							2
	Omsk hemorrhagic fever							
	Relapsing fever							
	Kyasanur forest disease							
	Q fever							
	Rabies							
	Coccidioidomycosis							
	Monkeypox							
	Zika virus infection							1
	Severe Fever with Thrombocytopenia Syndrome							1
	Hemorrhagic fever with renal syndrome							
	Western equine encephalitis							
	Tick-borne encephalitis							
	Anthrax							
	Chikungunya fever							1
	Scrub typhus(Tsutsugamushi disease)					2	1	38
	Dengue fever	1			2	10	7	38
	Eastern equine encephalitis							
	Avian influenza (excluding H5N1 and H7N9)							
	Nipah virus infection							
	Japanese spotted fever							5
	Japanese encephalitis							
	Hantavirus pulmonary syndrome							
	Herpes B virus infection							
	Glanders							
	Brucellosis							1
	Venezuelan equine encephalitis							
	Hendra virus infection							
Epidemic typhus								
Botulism		1			1		1	
Malaria				1	3	1	8	
Tularemia								
Lyme disease						1	1	
Lyssavirus infection(excluding rabies)								
Rift valley fever								
Melioidosis								
Legionellosis	2	4	2		26	12	188	
Leptospirosis					1		2	
Rocky mountain spotted fever								

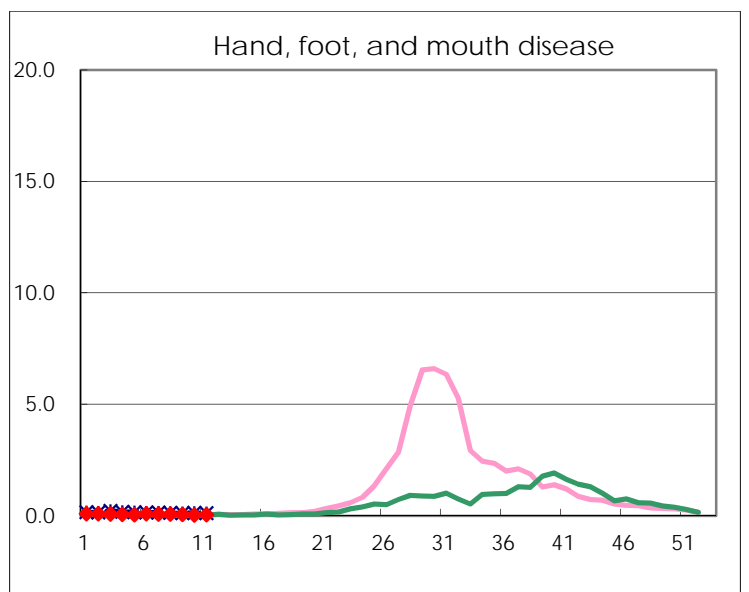
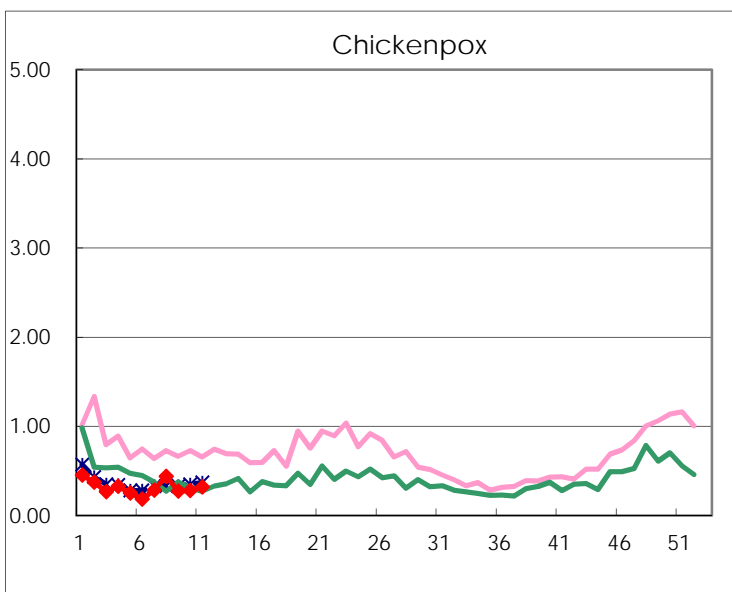
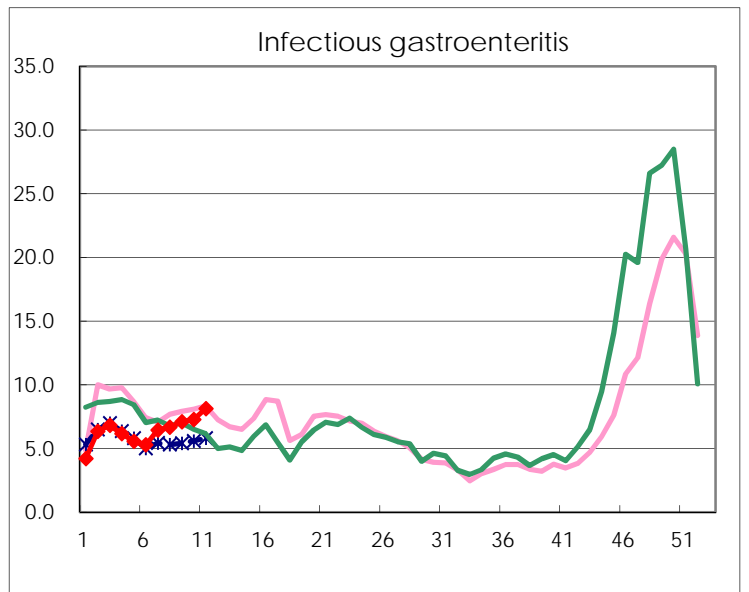
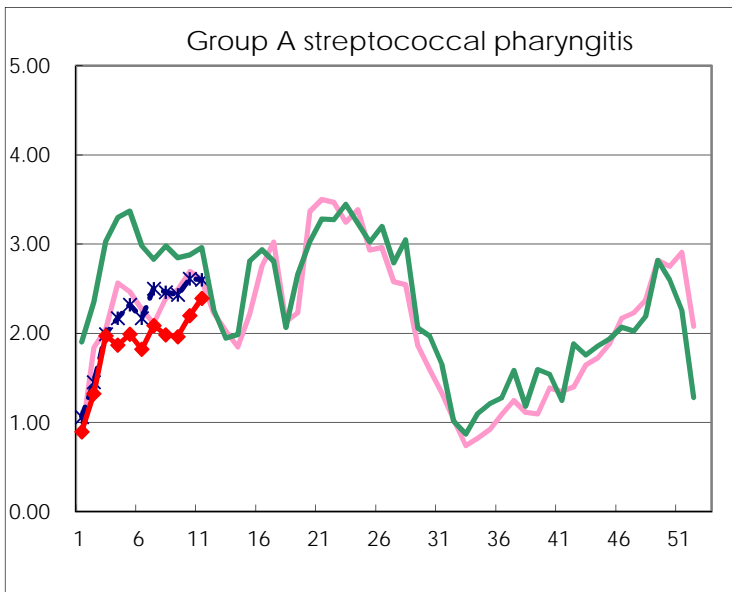
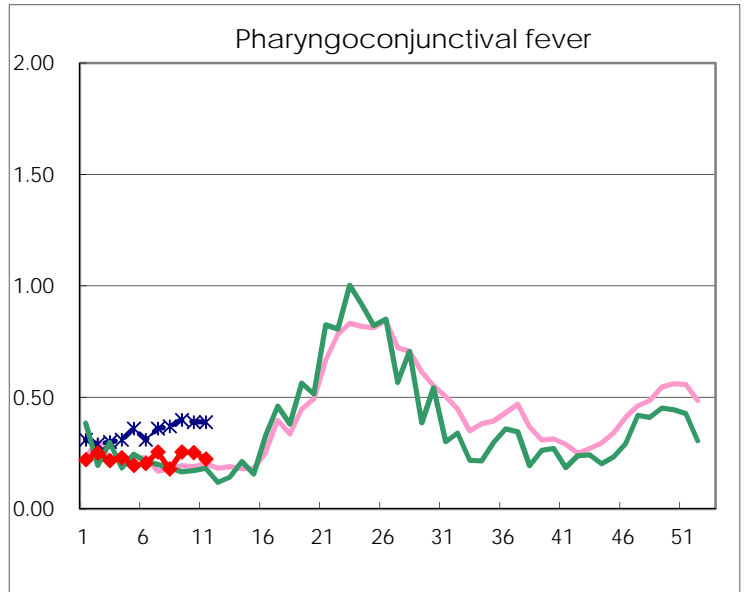
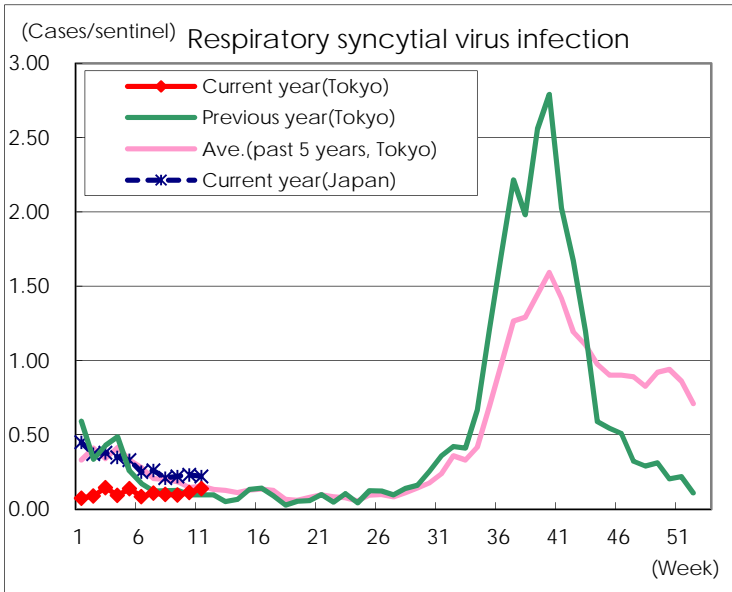
Category	Diseases	Tokyo					Japan	
		8th	9th	10th	11th	Cum 2017	11th	Cum 2017
V	Amebiasis	7	2	4	5	51	12	235
	Viral hepatitis(excluding hepatitis A and E)			1	1	10	3	59
	CRE infection	2	3	2	4	35	21	285
	Acute encephalitis(excluding JE and WNE)	1	1		3	19	10	180
	Cryptosporidiosis							
	Creutzfeldt-Jakob disease	1		2	1	7	1	32
	Severe invasive streptococcal infections(TSLS)	1		3	3	17	9	122
	Acquired immunodeficiency syndrome (AIDS)	9	12	5	7	98	13	266
	Giardiasis		3		1	5	1	9
	Invasive <i>Haemophilus influenzae</i> disease			1		10	4	88
	Invasive meningococcal disease							5
	Invasive pneumococcal disease	9	13	10	7	103	30	780
	Varicella (limited to hospitalized case)	1				7	3	50
	Congenital rubella syndrome							
	Syphilis	24	44	30	31	306	54	926
	Disseminated cryptococcosis			1		5		28
	Tetanus					1	1	9
	Vancomycin-resistant <i>S. aureus</i> infection							
	Vancomycin-resistant Enterococcus infection					3	1	22
	Rubella			1	1	2	2	16
Measles				3	6	9	59	
MDRA infection						1	8	

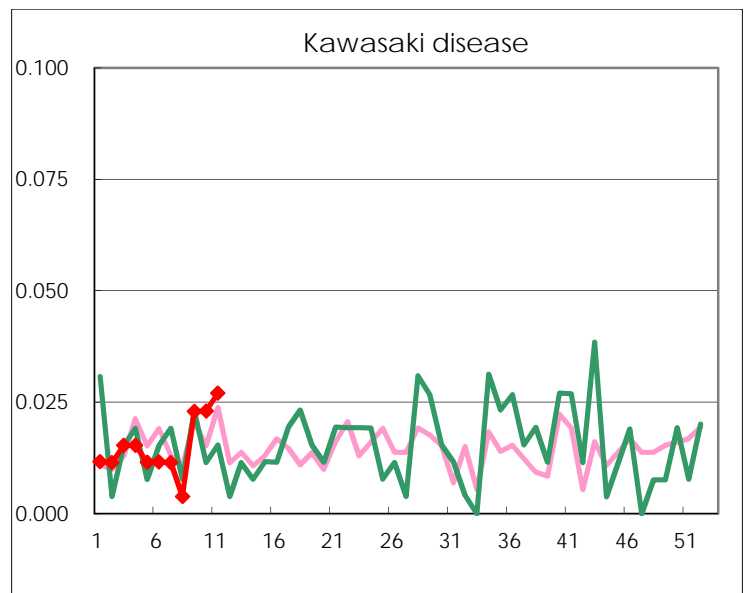
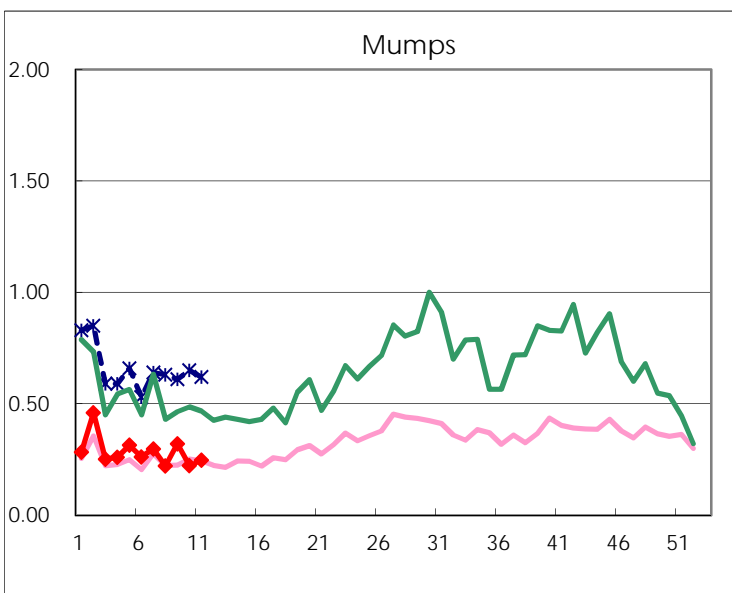
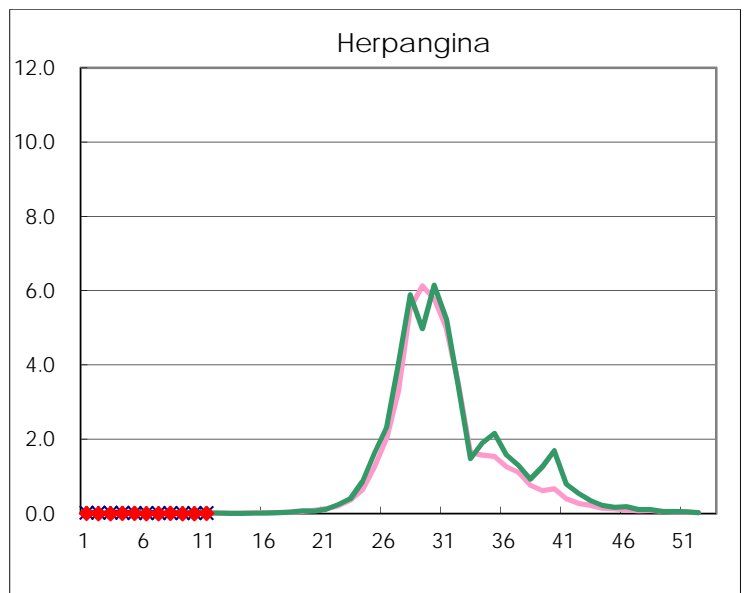
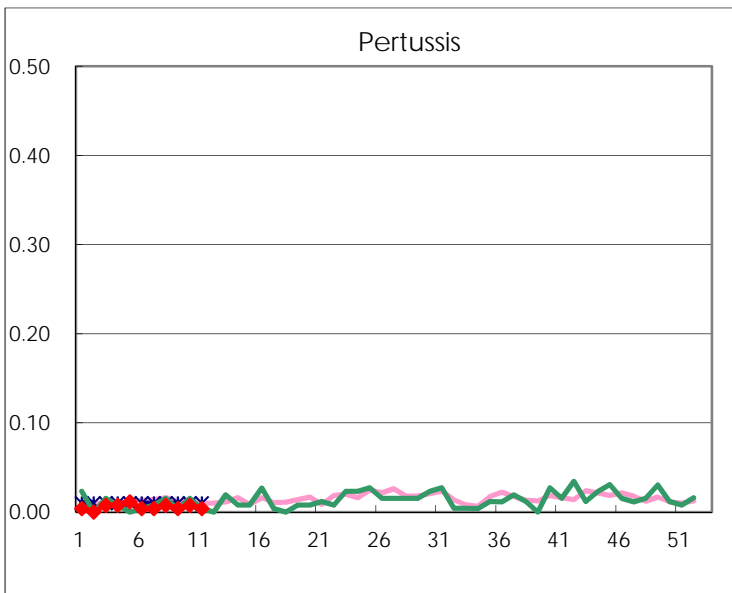
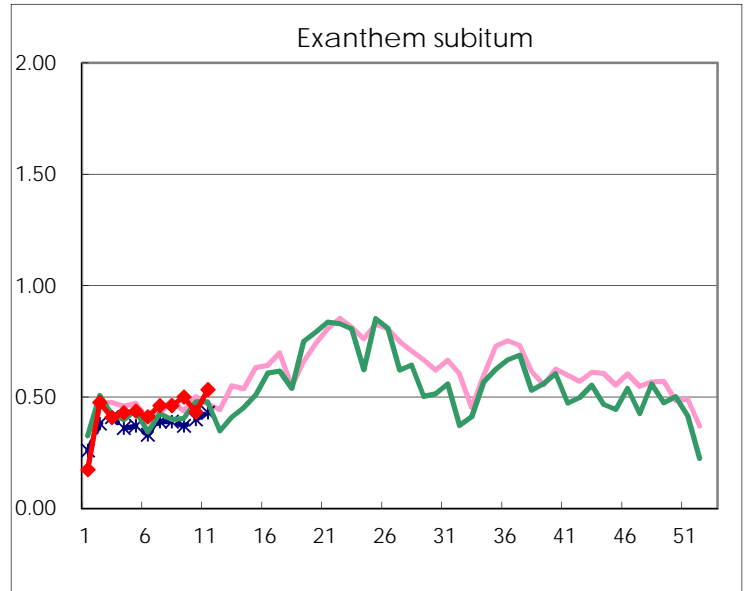
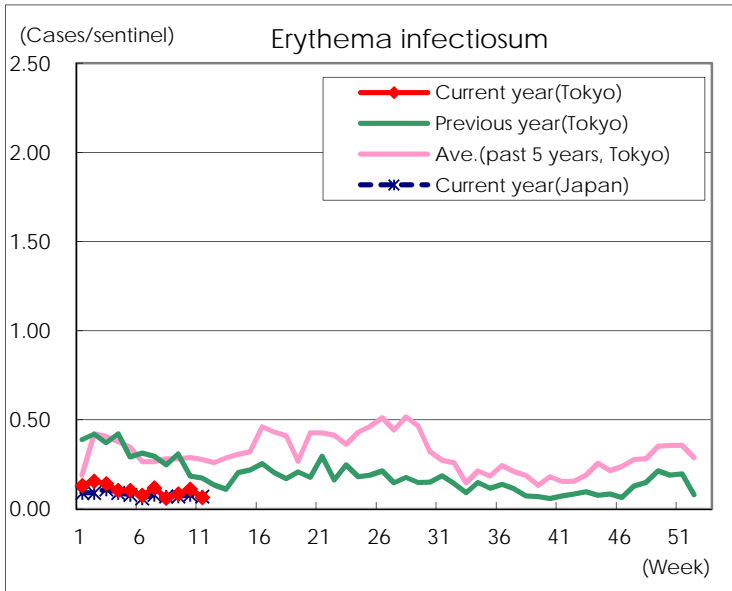
Number of patients with the diseases to be reported  
by the designated clinics and hospitals

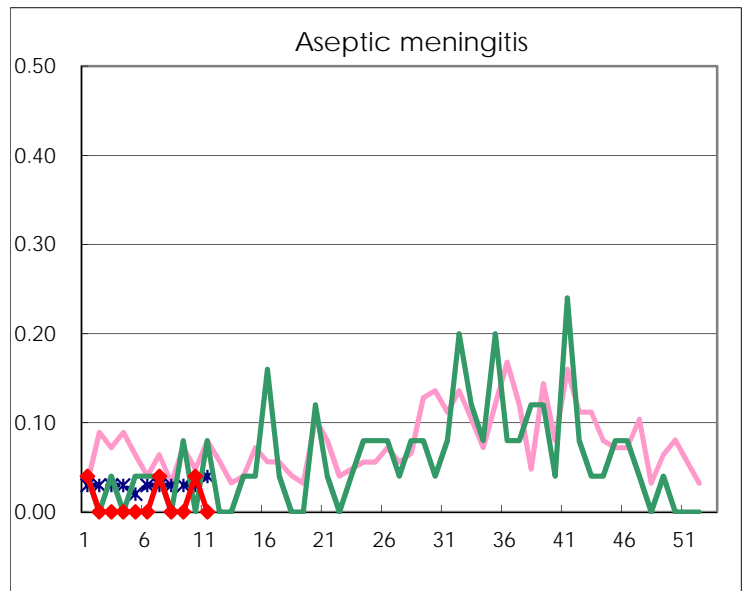
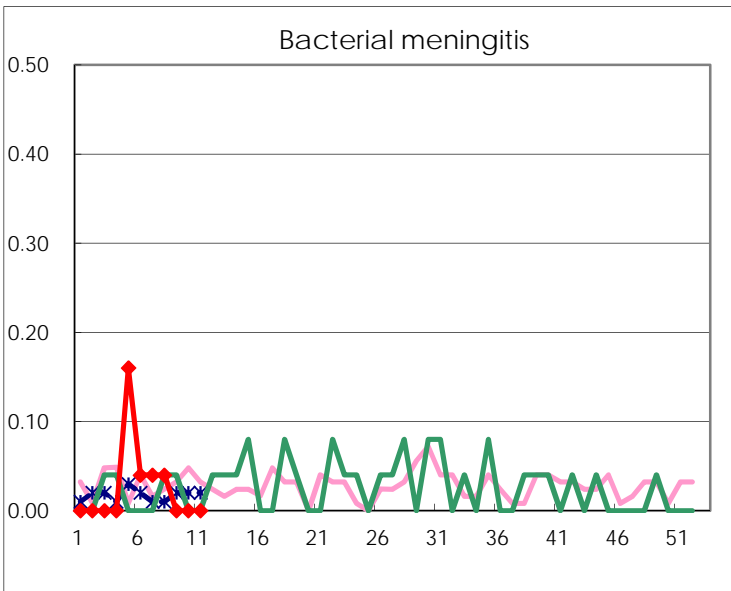
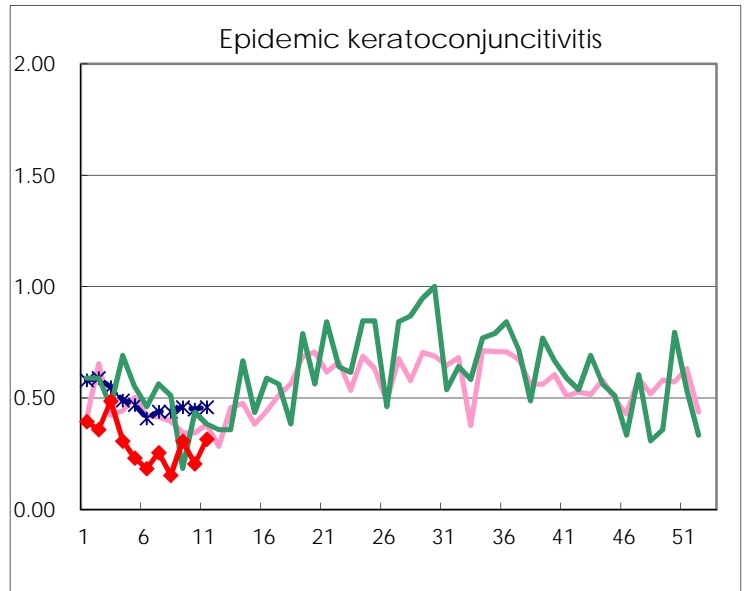
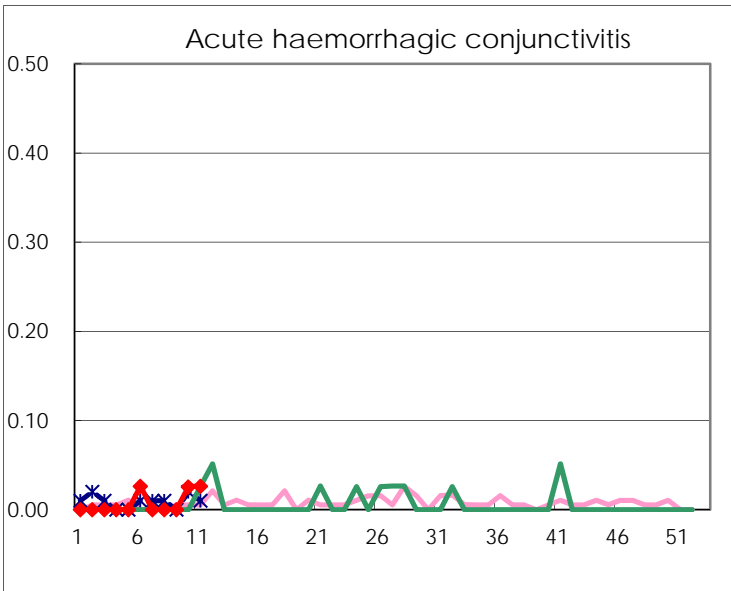
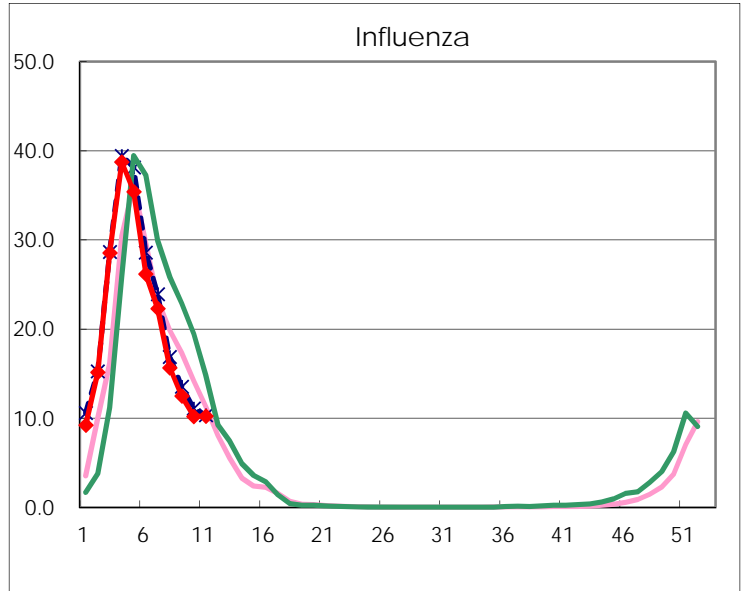
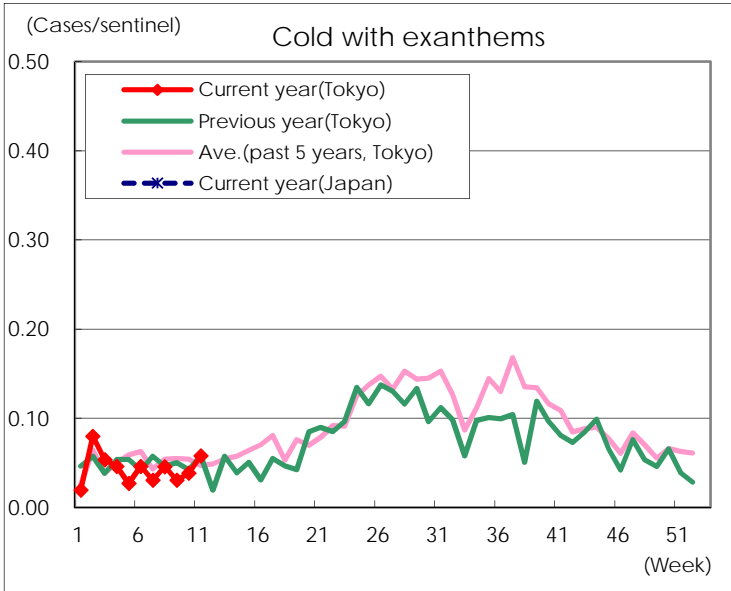
Diseases	Tokyo				
	8th	9th	10th	11th	/sentinel
Respiratory syncytial virus infection	26	25	29	36	0.14
Pharyngoconjunctival fever	47	67	66	58	0.22
Group A streptococcal pharyngitis	519	514	574	619	2.39
Infectious gastroenteritis	1,744	1,859	1,898	2,104	8.12
Chickenpox	115	72	73	83	0.32
Hand, foot, and mouth disease	19	17	9	10	0.04
Erythema infectiosum	16	22	29	17	0.07
Exanthem subitum	121	131	113	138	0.53
Pertussis	2	1	2	1	
Herpangina	3	1	1	3	0.01
Mumps	58	84	58	64	0.25
Kawasaki disease	1	6	6	7	0.03
Cold with exanthems	12	8	10	15	0.06
Influenza	6,516	5,181	4,236	4,217	10.24
Acute hemorrhagic conjunctivitis			1	1	0.03
Epidemic keratoconjunctivitis	6	12	8	12	0.32
Bacterial meningitis	1				
Aseptic meningitis			1		
Mycoplasma pneumonia	6	5	3	8	0.32
Chlamydial pneumonia (excluding psittacosis)		1		1	0.04
Infectious gastroenteritis (only by Rotavirus)	14	12	21	16	0.64
Influenza-Associated Hospitalizations	32	21	25	21	0.84

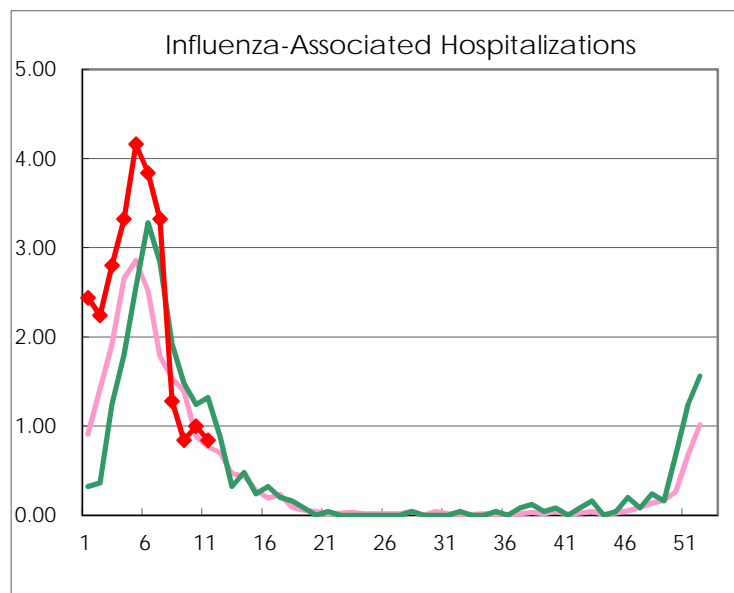
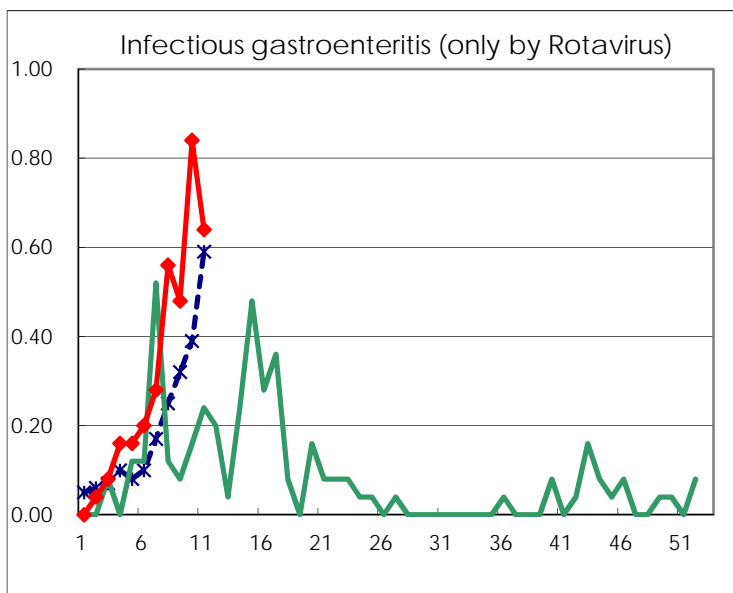
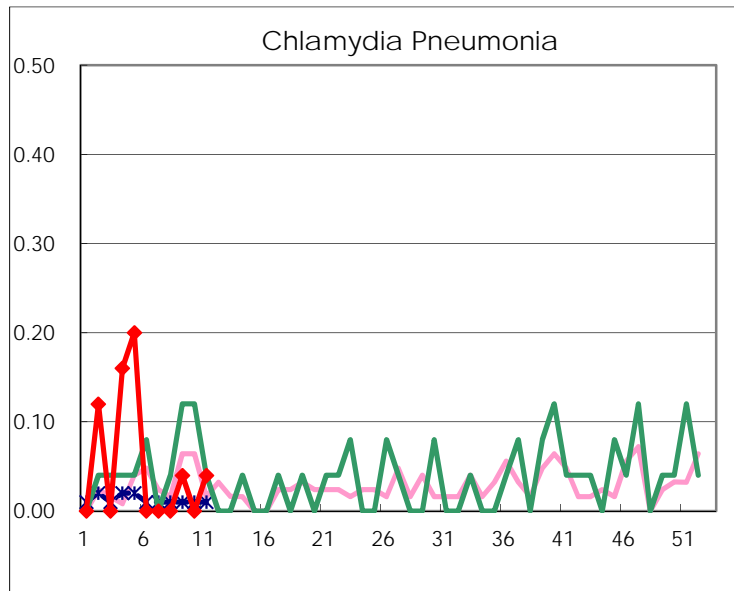
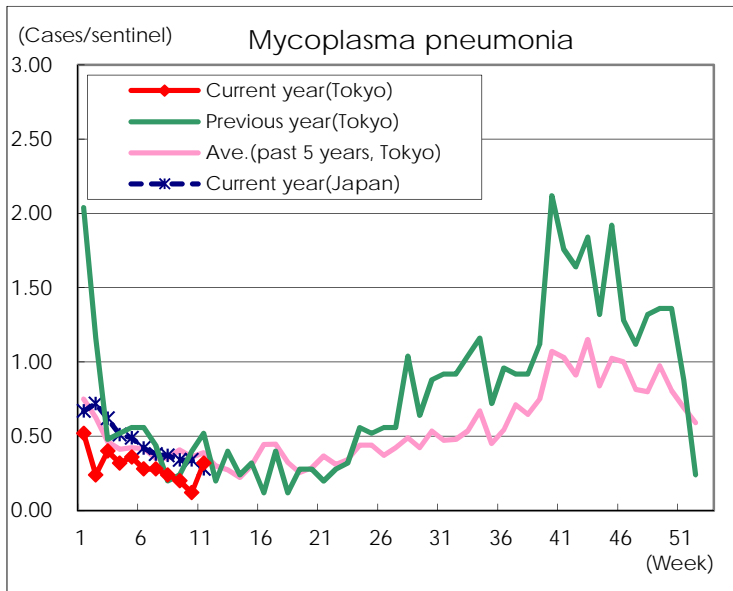
( Blank means 0. )

# Disease Trend Graph (weekly reported cases per sentinel in comparison)









Number of sentinel facilities for weekly reporting		
Types of sentinels	Number of sentinels	Sentinels having reported
Pediatric	264	259
Influenza	419	412
Ophthalmic	39	38
Specially-designated	25	25