

27 April 2017 / Number 16

Surveillance System in Tokyo, Japan

The infectious diseases which all physicians must report

All physicians must report to health centers the incidence of the diseases which are shown at page one. Health centers electronically report the individual cases to Tokyo Metropolitan Infectious Disease Surveillance Center.

The infectious diseases required to be reported by the sentinels

The numbers of patients who visit the sentinel clinics or hospitals during a week are reported to health centers in Tokyo. And they electronically report the numbers to Tokyo Metropolitan Infectious Disease Surveillance Center. We have about 500 sentinel clinics and hospitals in Tokyo.

Tokyo Metropolitan Institute of Public Health

TEL:81-3-3363-3213 FAX:81-3-5332-7365

e-mail:www@tokyo-eiken.go.jp

URL:idsc.tokyo-eiken.go.jp/

Number of patients with the diseases which all physicians must report

Category	Diseases	Tokyo					Japan	
		13th	14th	15th	16th	Cum 2017	16th	Cum 2017
I	Ebola hemorrhagic fever							
	Crimean-Congo hemorrhagic fever							
	Smallpox							
	South American hemorrhagic fever							
	Plague							
	Marburg disease							
	Lassa fever							
II	Acute poliomyelitis							
	Tuberculosis	58	65	63	53	990	349	6,490
	Diphtheria							
	Severe Acute Respiratory Syndrome(SARS)							
	Middle East Respiratory Syndrome (MERS)							
	Avian influenza H5N1							
	Avian influenza H7N9							
III	Cholera							
	Shigellosis	1	1	1	1	14	2	48
	Enterohemorrhagic Escherichia coli infection	6	2	4	5	32	21	262
	Typhoid fever					1	3	11
	Paratyphoid fever	1				2		4
IV	Hepatitis E		1		2	19	4	116
	West Nile fever							
	Hepatitis A	1	1	2	4	32	10	84
	Echinococcosis							10
	Yellow fever							
	Psittacosis							4
	Omsk hemorrhagic fever							
	Relapsing fever							
	Kyasanur forest disease							
	Q fever							
	Rabies							
	Coccidioidomycosis							
	Monkeypox							
	Zika virus infection							1
	Severe Fever with Thrombocytopenia Syndrome							2
	Hemorrhagic fever with renal syndrome							
	Western equine encephalitis							
	Tick-borne encephalitis							
	Anthrax							
	Chikungunya fever							1
	Scrub typhus(Tsutsugamushi disease)					2	1	41
	Dengue fever	1	3	1		16		61
	Eastern equine encephalitis							
	Avian influenza (excluding H5N1 and H7N9)							
	Nipah virus infection							
	Japanese spotted fever							7
	Japanese encephalitis							
	Hantavirus pulmonary syndrome							
	Herpes B virus infection							
	Glanders							
	Brucellosis							1
	Venezuelan equine encephalitis							
Hendra virus infection								
Epidemic typhus								
Botulism					1		1	
Malaria	1				4		10	
Tularemia								
Lyme disease							1	
Lyssavirus infection(excluding rabies)								
Rift valley fever								
Melioidosis								
Legionellosis	4	2	1	1	36	18	355	
Leptospirosis					1		2	
Rocky mountain spotted fever								

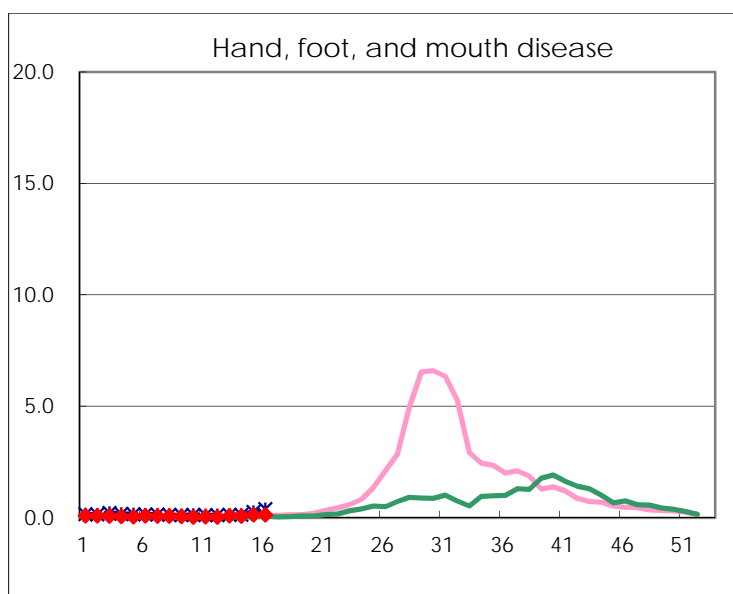
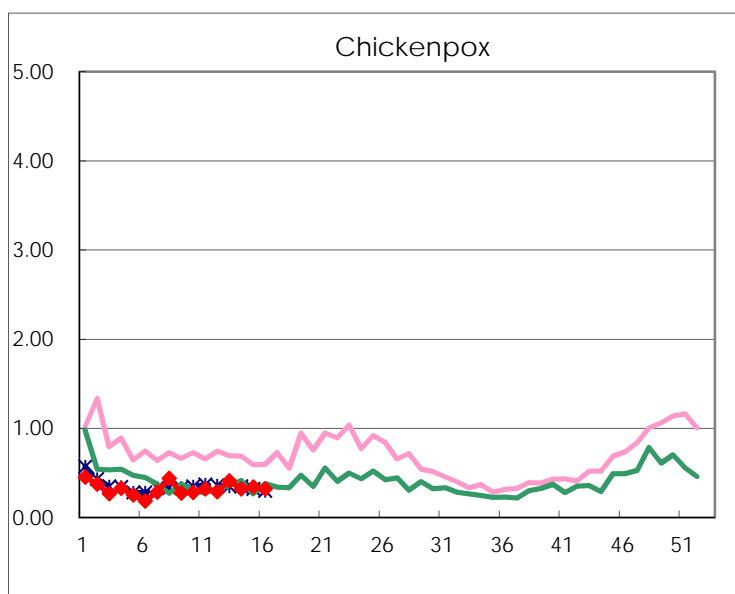
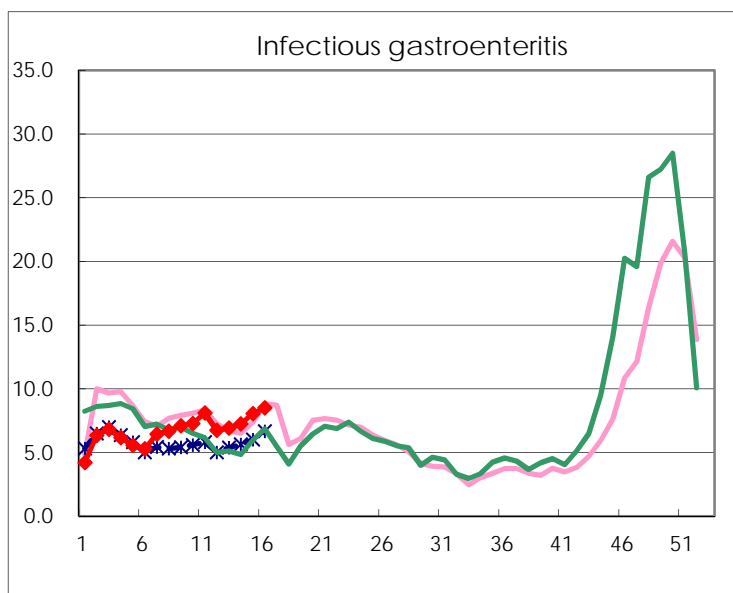
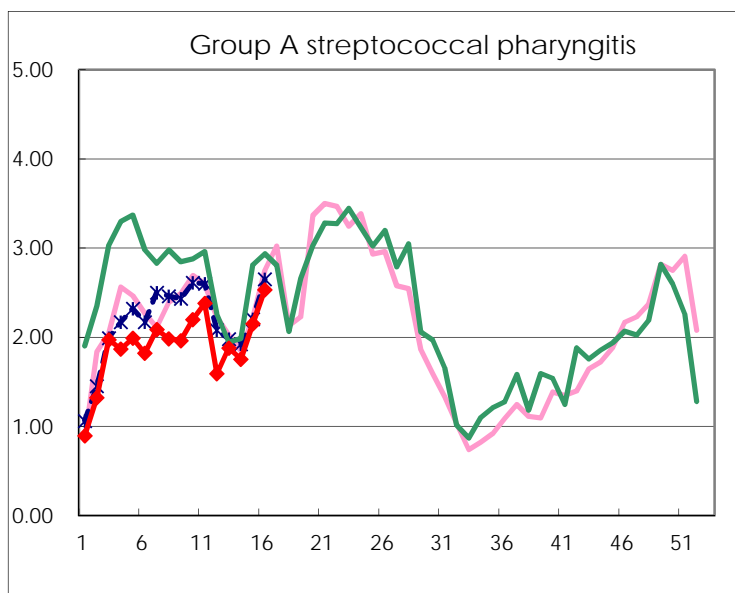
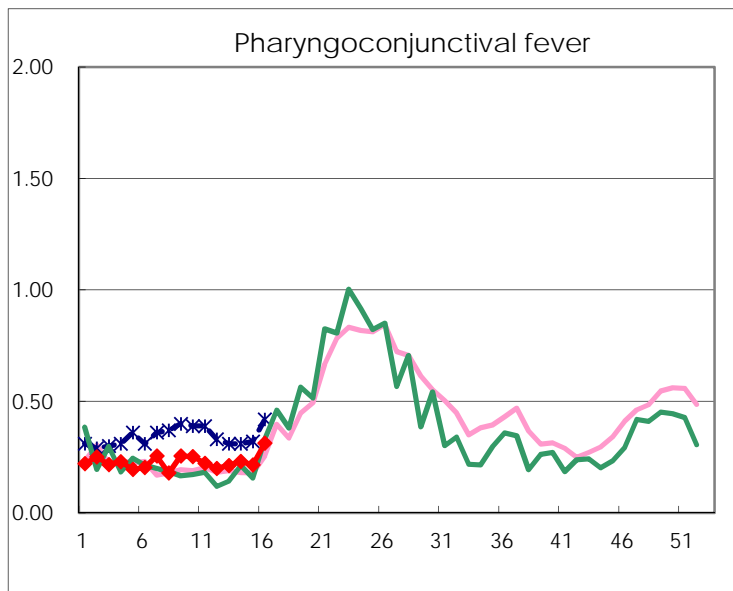
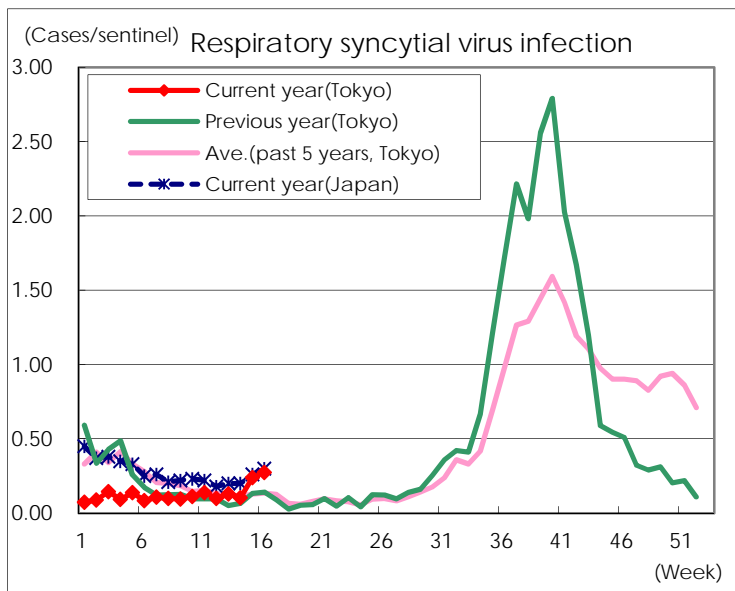
Category	Diseases	Tokyo					Japan	
		13th	14th	15th	16th	Cum 2017	16th	Cum 2017
V	Amebiasis	6	2	5	2	69	11	324
	Viral hepatitis(excluding hepatitis A and E)		3		2	20	2	83
	CRE infection	6	4	5	5	58	16	426
	Acute encephalitis(excluding JE and WNE)	1		1	3	25	10	238
	Cryptosporidiosis							2
	Creutzfeldt-Jakob disease					7	3	53
	Severe invasive streptococcal infections(TSLS)	2	2	3		25	7	187
	Acquired immunodeficiency syndrome (AIDS)	8	11	10	11	142	12	392
	Giardiasis		1	1	1	9		23
	Invasive <i>Haemophilus influenzae</i> disease	3		1		14	2	118
	Invasive meningococcal disease	1				1	1	9
	Invasive pneumococcal disease	16	8	10	10	162	48	1,203
	Varicella (limited to hospitalized case)	1	2		2	13	6	73
	Congenital rubella syndrome							
	Syphilis	23	32	34	34	456	60	1,404
	Disseminated cryptococcosis			2		7	2	48
	Tetanus					1	1	17
	Vancomycin-resistant <i>S. aureus</i> infection							
	Vancomycin-resistant Enterococcus infection				1	4	1	28
	Rubella			1	1	4	4	26
Measles	4		3		16	7	148	
MDRA infection				1	1	2	11	

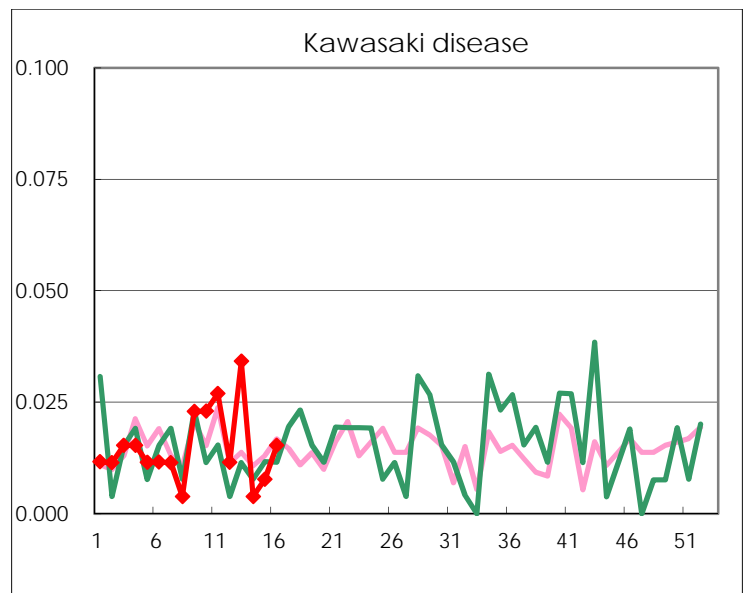
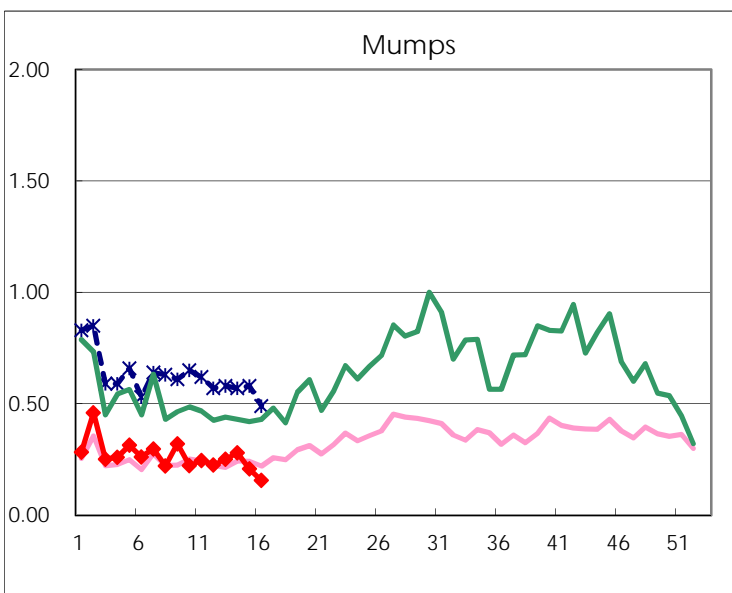
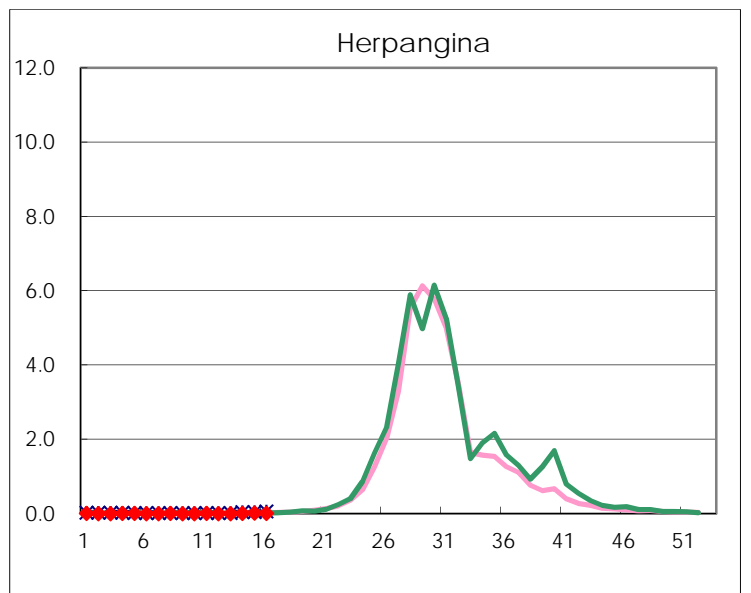
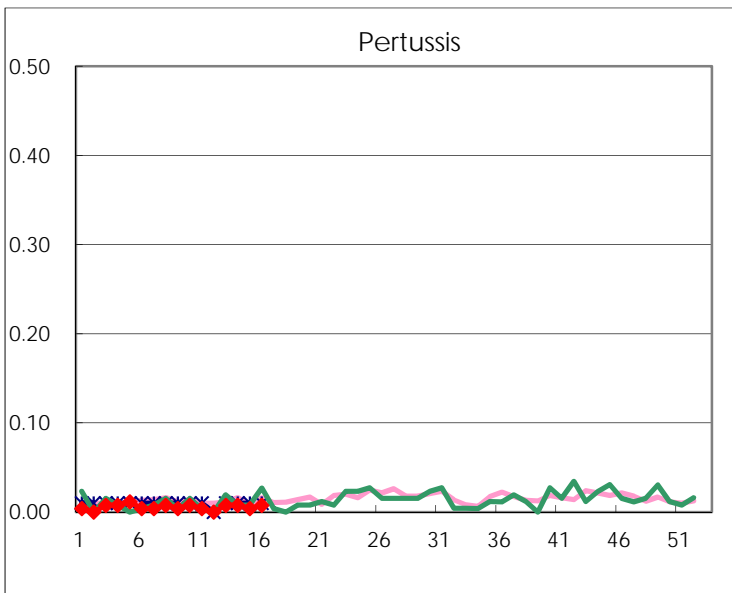
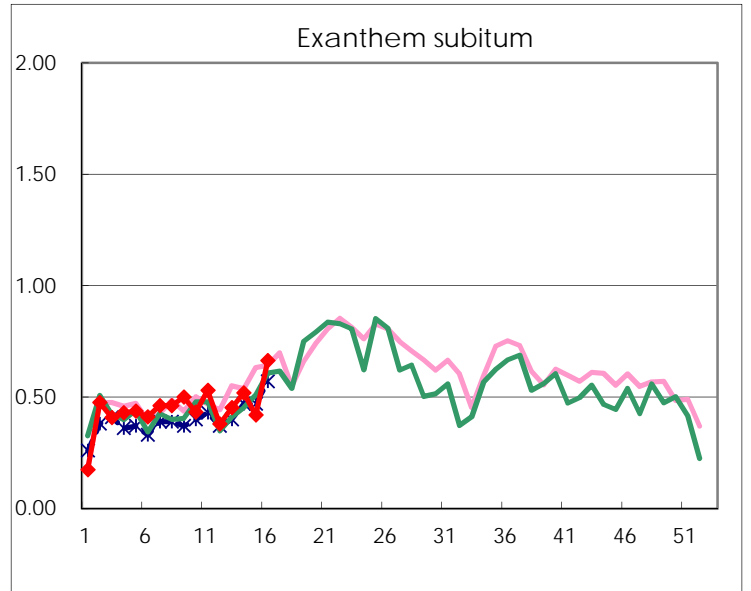
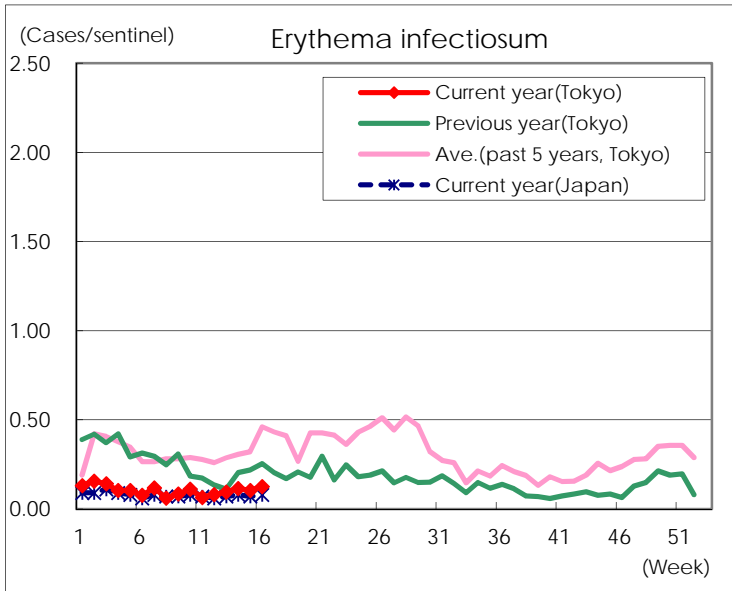
Number of patients with the diseases to be reported
by the designated clinics and hospitals

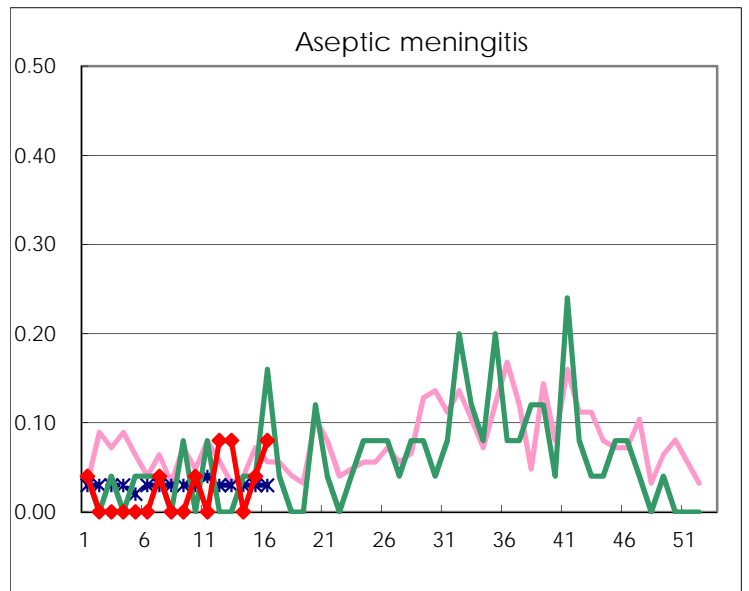
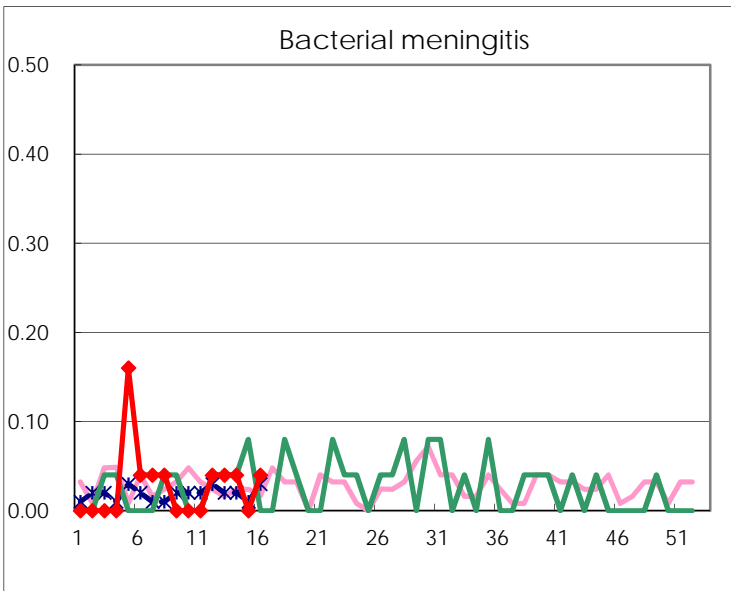
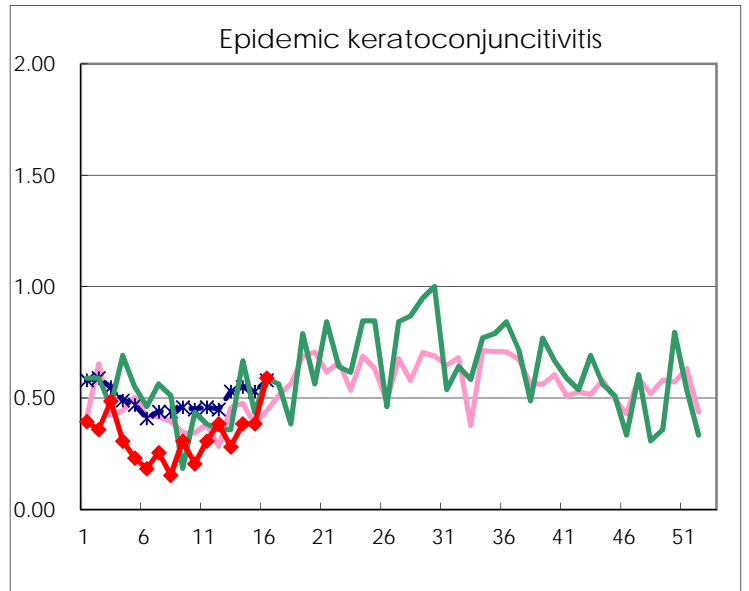
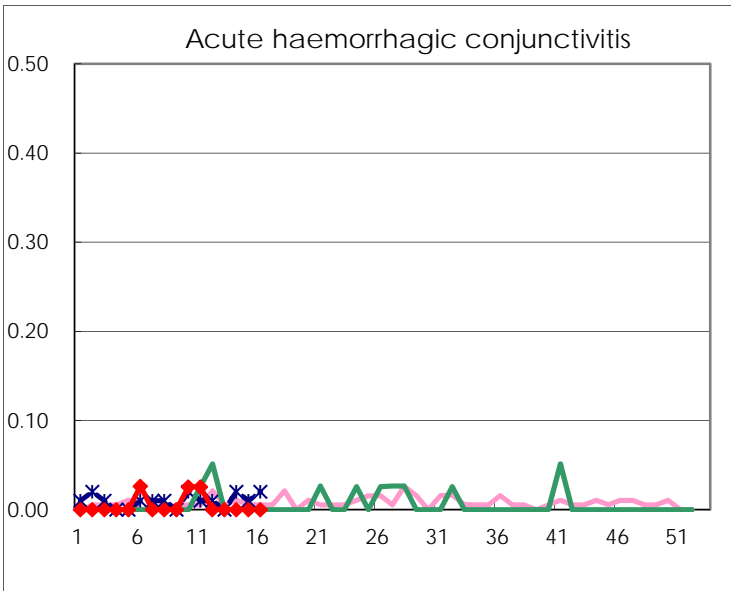
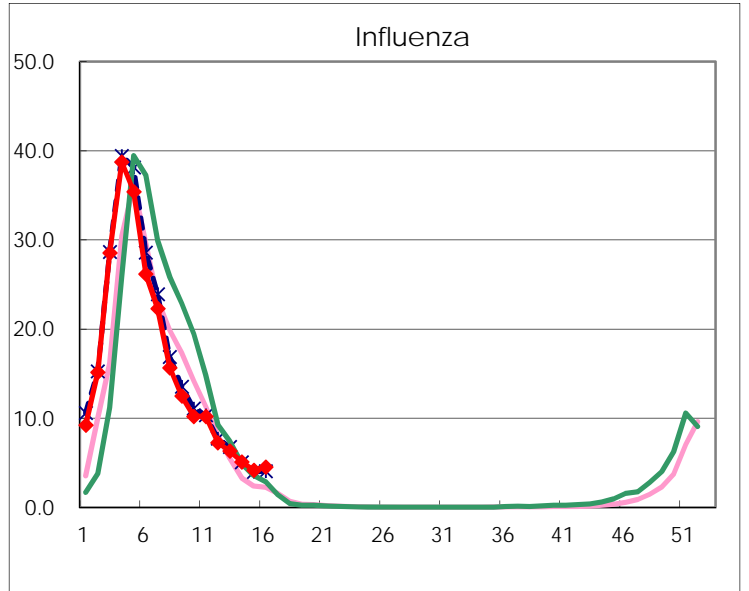
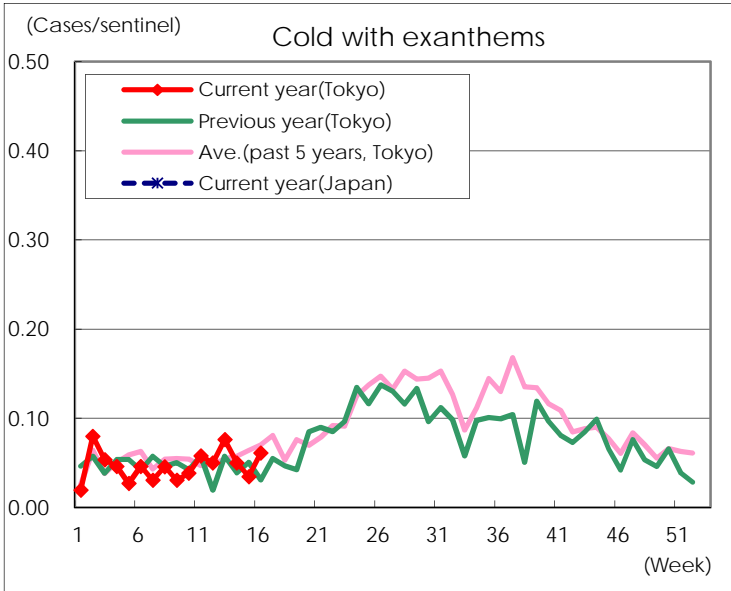
Diseases	Tokyo				
	13th	14th	15th	16th	/sentinel
Respiratory syncytial virus infection	34	27	62	72	0.27
Pharyngoconjunctival fever	56	60	56	82	0.31
Group A streptococcal pharyngitis	494	456	559	663	2.53
Infectious gastroenteritis	1,821	1,882	2,093	2,226	8.50
Chickenpox	108	83	89	84	0.32
Hand, foot, and mouth disease	23	20	32	33	0.13
Erythema infectiosum	25	30	27	33	0.13
Exanthem subitum	119	135	109	174	0.66
Pertussis	2	2	1	2	0.01
Herpangina	1	3	5	3	0.01
Mumps	66	73	54	41	0.16
Kawasaki disease	9	1	2	4	0.02
Cold with exanthems	20	13	9	16	0.06
Influenza	2,635	2,114	1,716	1,872	4.53
Acute hemorrhagic conjunctivitis					
Epidemic keratoconjunctivitis	11	15	15	23	0.59
Bacterial meningitis	1	1		1	0.04
Aseptic meningitis	2		1	2	0.08
Mycoplasma pneumonia	6	2	1	3	0.12
Chlamydial pneumonia (excluding psittacosis)	1	1	3	2	0.08
Infectious gastroenteritis (only by Rotavirus)	13	16	10	16	0.64
Influenza-Associated Hospitalizations	14	9	6	9	0.36

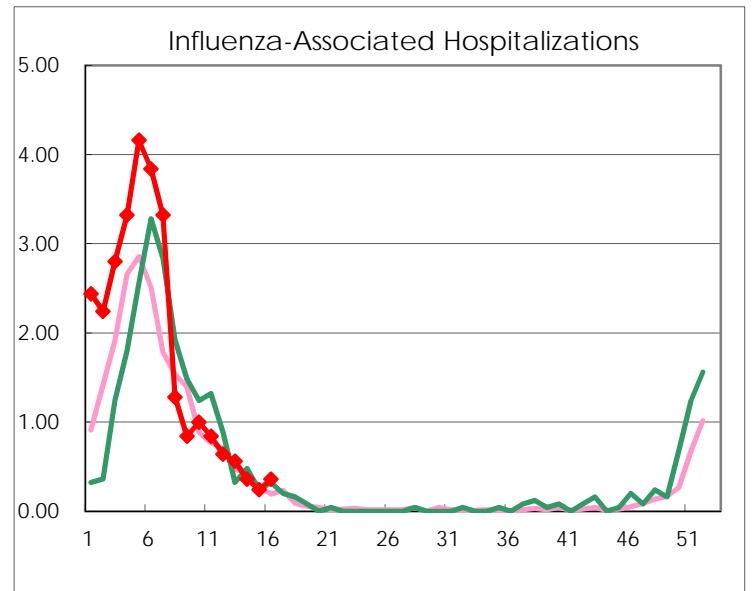
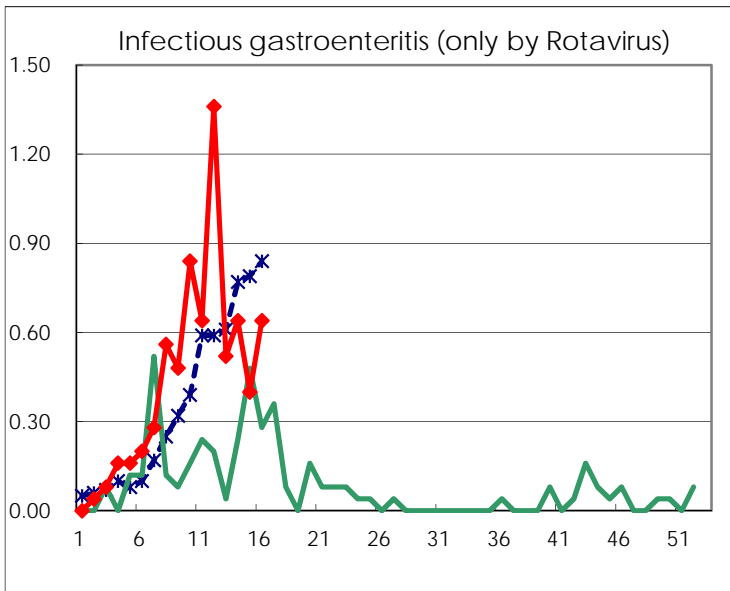
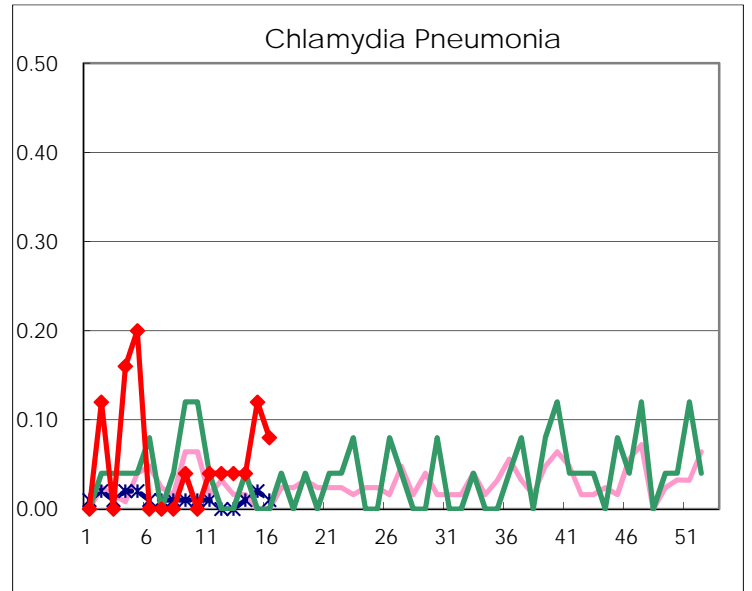
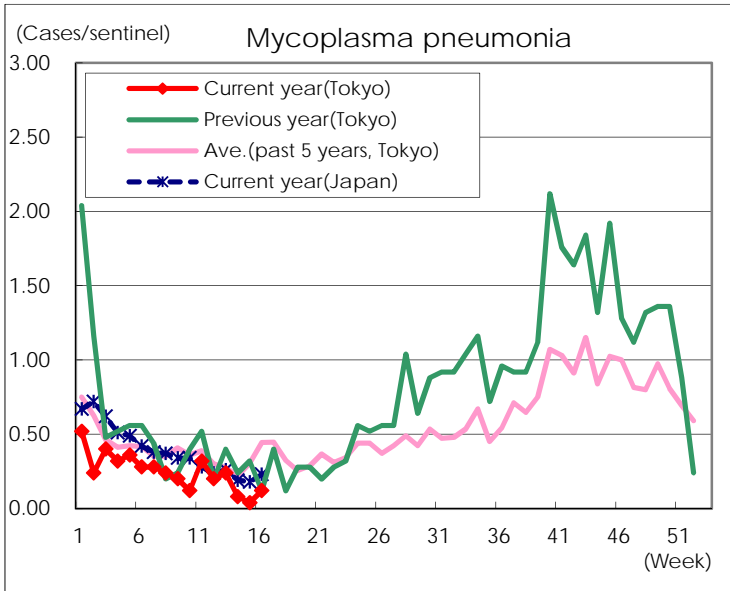
(Blank means 0.)

Disease Trend Graph (weekly reported cases per sentinel in comparison)









Number of sentinel facilities for weekly reporting		
Types of sentinels	Number of sentinels	Sentinels having reported
Pediatric	264	262
Influenza	419	413
Ophthalmic	39	39
Specially-designated	25	25