

9 May 2017 / Number 17

Surveillance System in Tokyo, Japan

The infectious diseases which all physicians must report

All physicians must report to health centers the incidence of the diseases which are shown at page one. Health centers electronically report the individual cases to Tokyo Metropolitan Infectious Disease Surveillance Center.

The infectious diseases required to be reported by the sentinels

The numbers of patients who visit the sentinel clinics or hospitals during a week are reported to health centers in Tokyo. And they electronically report the numbers to Tokyo Metropolitan Infectious Disease Surveillance Center. We have about 500 sentinel clinics and hospitals in Tokyo.

Tokyo Metropolitan Institute of Public Health

TEL:81-3-3363-3213 FAX:81-3-5332-7365

e-mail:www@tokyo-eiken.go.jp

URL:idsc.tokyo-eiken.go.jp/

Number of patients with the diseases which all physicians must report

Category	Diseases	Tokyo					Japan		
		14th	15th	16th	17th	Cum 2017	17th	Cum 2017	
I	Ebola hemorrhagic fever								
	Crimean-Congo hemorrhagic fever								
	Smallpox								
	South American hemorrhagic fever								
	Plague								
	Marburg disease								
	Lassa fever								
II	Acute poliomyelitis								
	Tuberculosis	65	65	58	68	1,065	358	6,937	
	Diphtheria								
	Severe Acute Respiratory Syndrome(SARS)								
	Middle East Respiratory Syndrome (MERS)								
	Avian influenza H5N1								
	Avian influenza H7N9								
III	Cholera								
	Shigellosis	1	1	1		14	3	51	
	Enterohemorrhagic Escherichia coli infection	2	4	5	2	34	29	295	
	Typhoid fever				1	2	3	14	
	Paratyphoid fever					2	1	5	
IV	Hepatitis E	1		2	3	22	6	123	
	West Nile fever								
	Hepatitis A	1	2	4	3	35	6	95	
	Echinococcosis							9	
	Yellow fever								
	Psittacosis						1	5	
	Omsk hemorrhagic fever								
	Relapsing fever								
	Kyasanur forest disease								
	Q fever								
	Rabies								
	Coccidioidomycosis								
	Monkeypox								
	Zika virus infection							1	
	Severe Fever with Thrombocytopenia Syndrome							1	3
	Hemorrhagic fever with renal syndrome								
	Western equine encephalitis								
	Tick-borne encephalitis								
	Anthrax								
	Chikungunya fever					1	1		1
	Scrub typhus(Tsutsugamushi disease)						2	4	46
	Dengue fever	3	1		1	17	1		62
	Eastern equine encephalitis								
	Avian influenza (excluding H5N1 and H7N9)								
	Nipah virus infection								
	Japanese spotted fever							4	11
	Japanese encephalitis								
	Hantavirus pulmonary syndrome								
	Herpes B virus infection								
	Glanders								
	Brucellosis								1
	Venezuelan equine encephalitis								
Hendra virus infection									
Epidemic typhus									
Botulism						1		1	
Malaria						4	1	11	
Tularemia									
Lyme disease								1	
Lyssavirus infection(excluding rabies)									
Rift valley fever									
Melioidosis									
Legionellosis	2	1	1	1	37	22		377	
Leptospirosis						1		2	
Rocky mountain spotted fever									

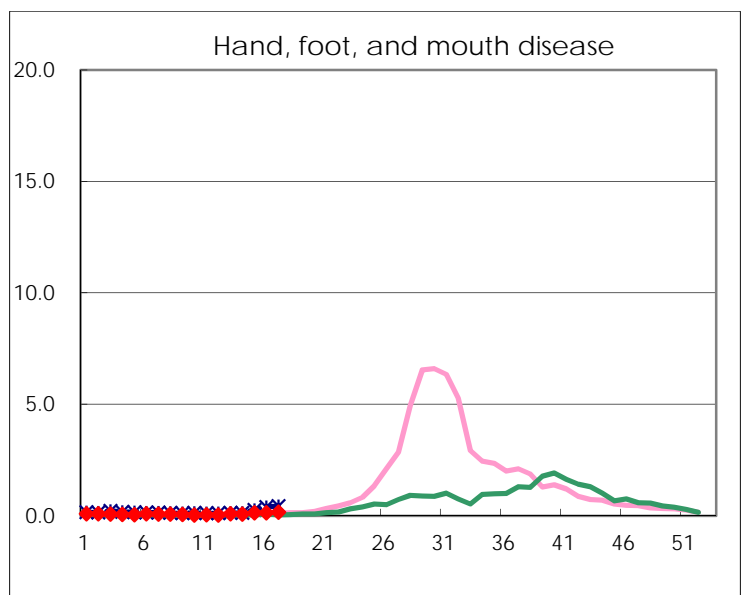
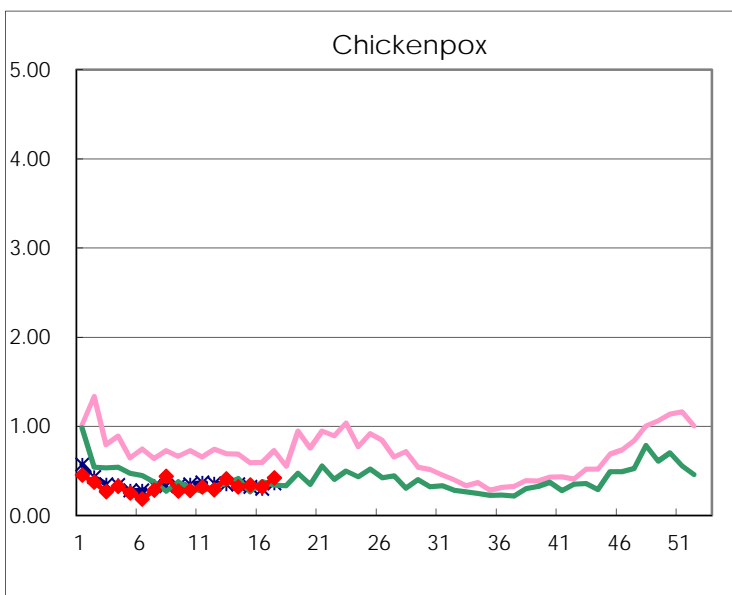
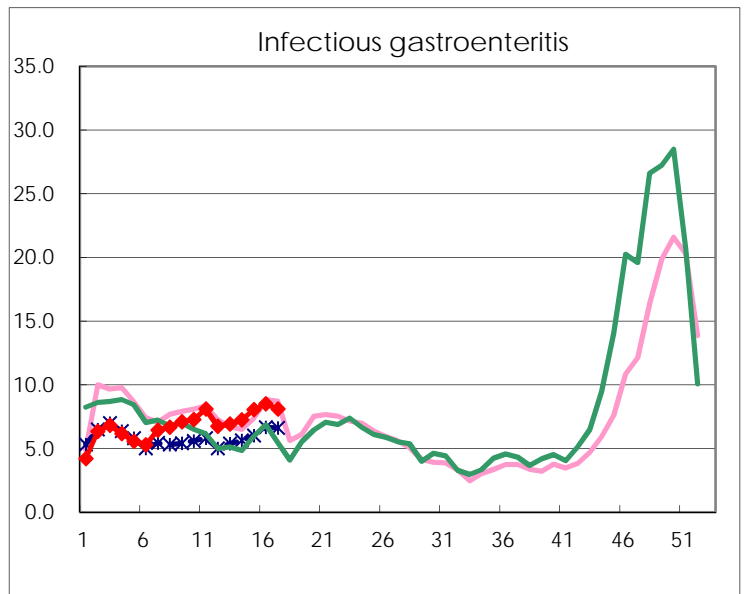
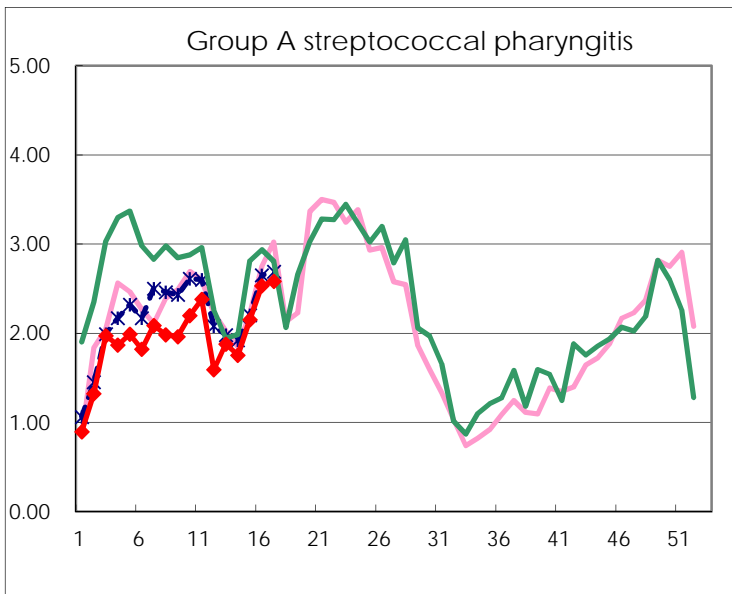
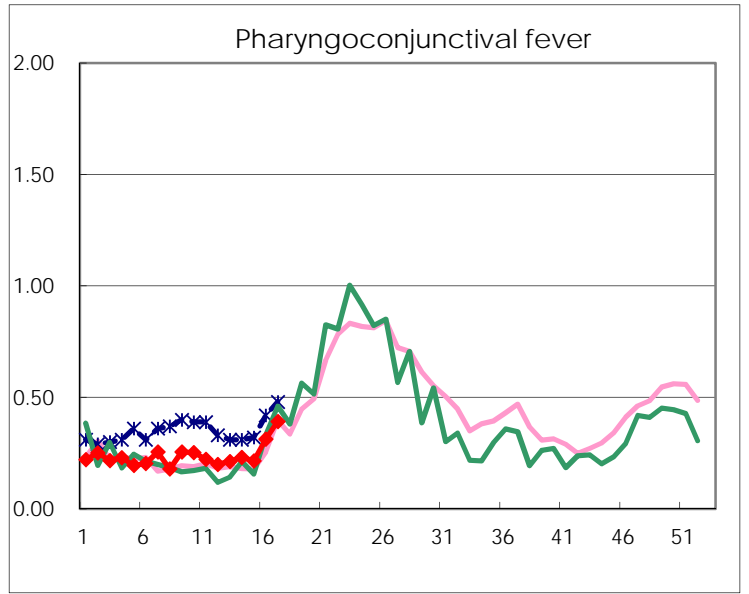
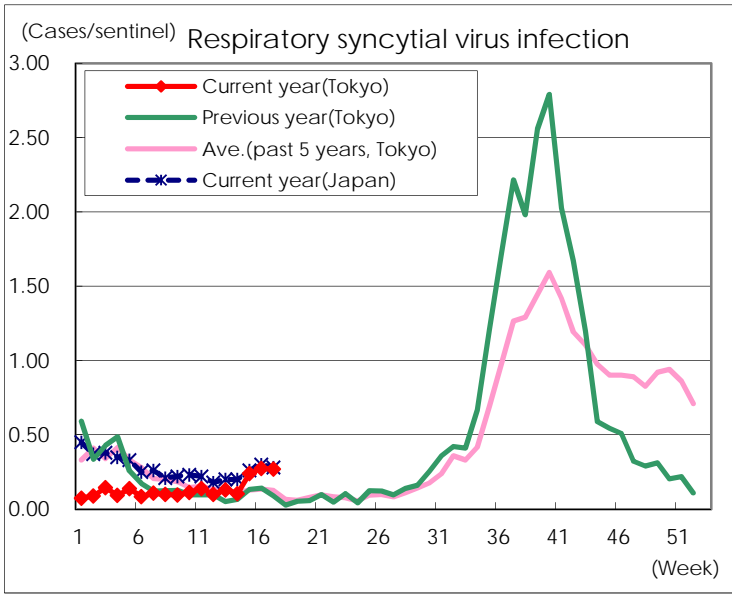
Category	Diseases	Tokyo					Japan	
		14th	15th	16th	17th	Cum 2017	17th	Cum 2017
V	Amebiasis	2	5	2	3	72	9	343
	Viral hepatitis(excluding hepatitis A and E)	3		2	1	21	5	91
	CRE infection	4	5	5	2	60	13	442
	Acute encephalitis(excluding JE and WNE)		1	3	1	26	9	256
	Cryptosporidiosis							2
	Creutzfeldt-Jakob disease					7	2	56
	Severe invasive streptococcal infections(TSLS)	2	3		1	26	12	195
	Acquired immunodeficiency syndrome (AIDS)	11	10	11	7	149	16	414
	Giardiasis	1	1	1	1	10	1	24
	Invasive <i>Haemophilus influenzae</i> disease		1			14	4	125
	Invasive meningococcal disease					1	2	11
	Invasive pneumococcal disease	8	10	10	10	172	66	1,295
	Varicella (limited to hospitalized case)	2		2		13	2	77
	Congenital rubella syndrome							
	Syphilis	32	34	34	37	493	81	1,523
	Disseminated cryptococcosis		2			7	1	50
	Tetanus					1	1	18
	Vancomycin-resistant <i>S. aureus</i> infection							
	Vancomycin-resistant Enterococcus infection			1		4		29
	Rubella		1	1	1	5	6	32
Measles		3		1	17	8	158	
MDRA infection			1		1		11	

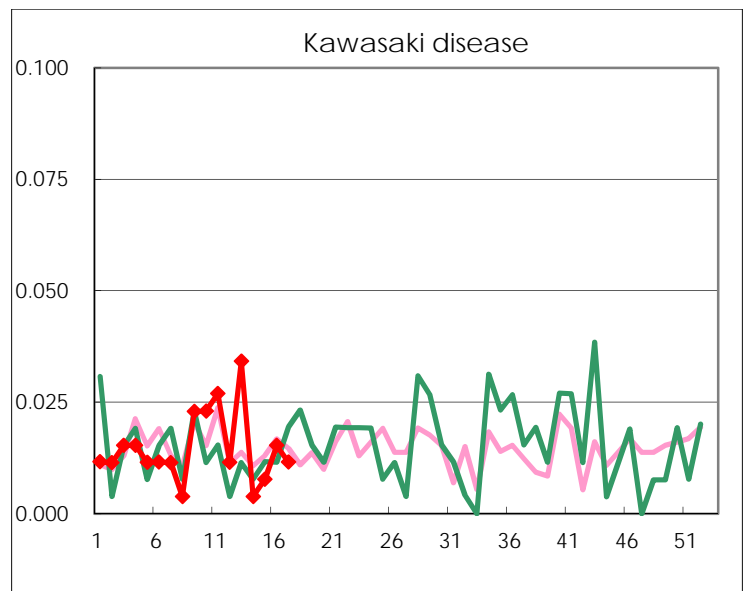
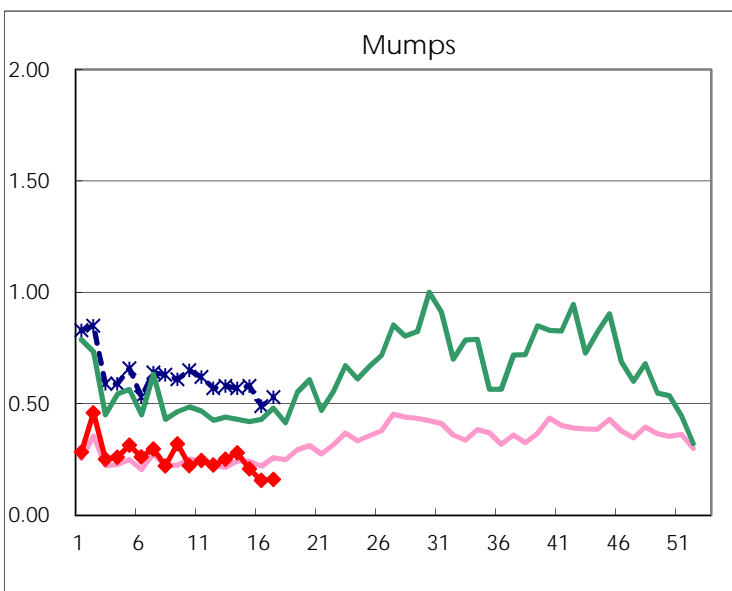
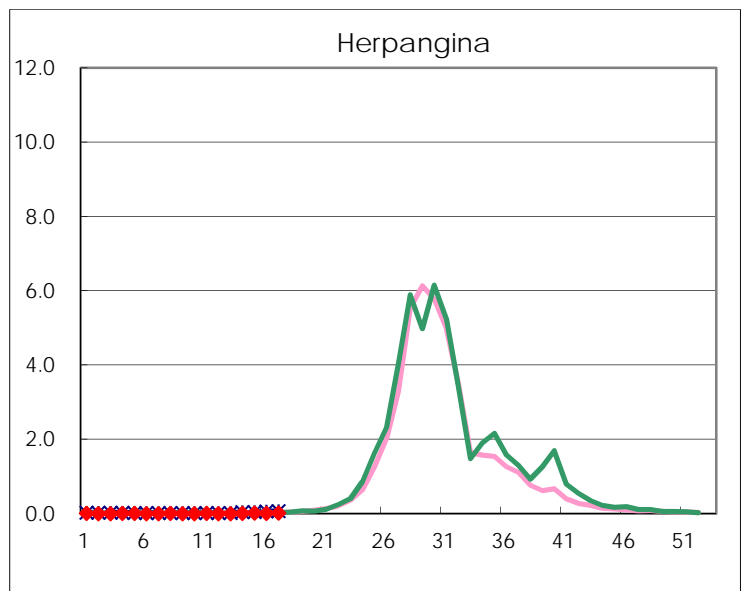
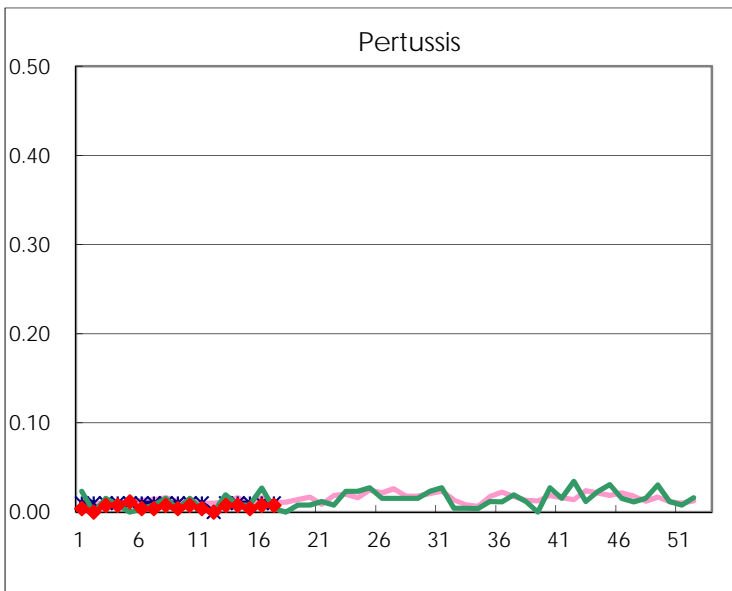
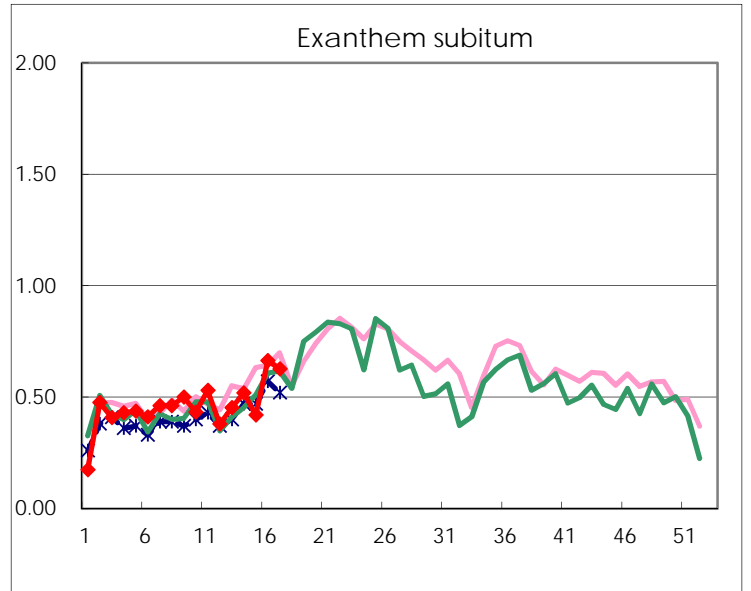
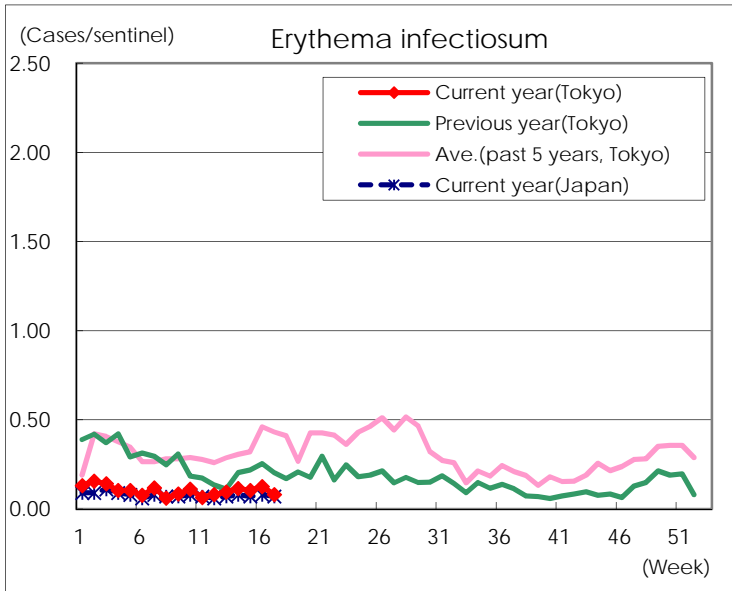
Number of patients with the diseases to be reported
by the designated clinics and hospitals

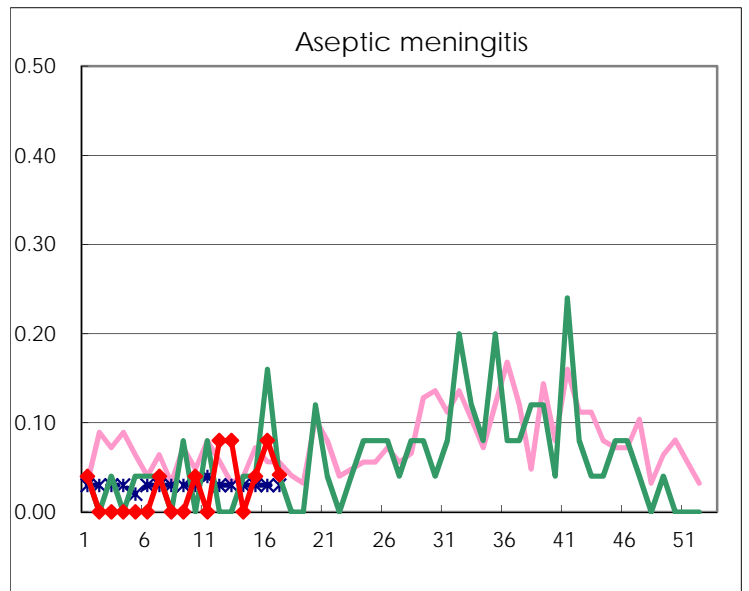
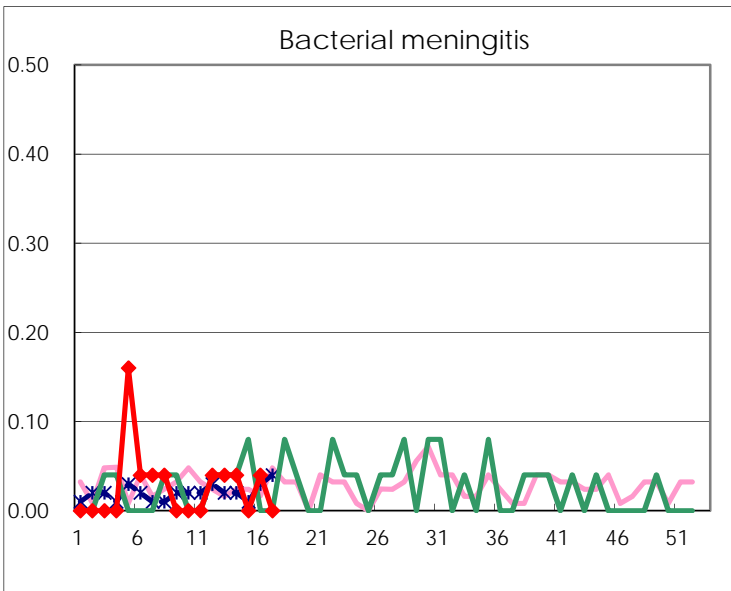
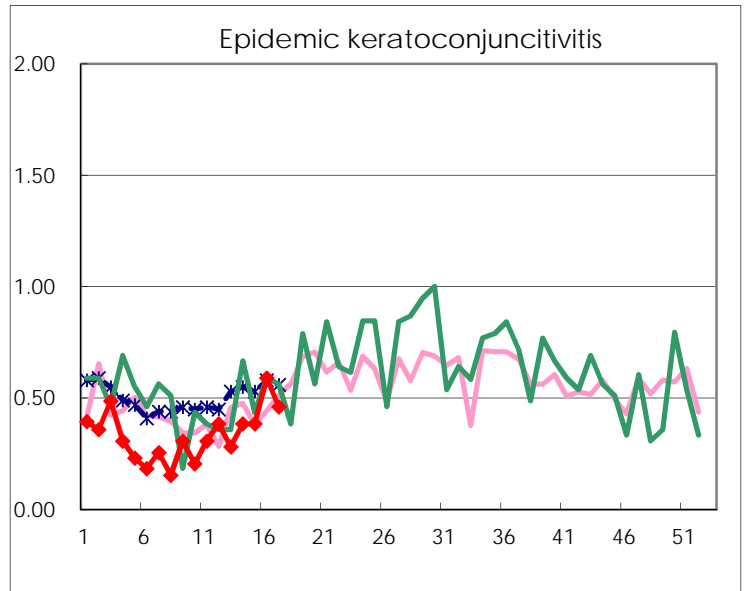
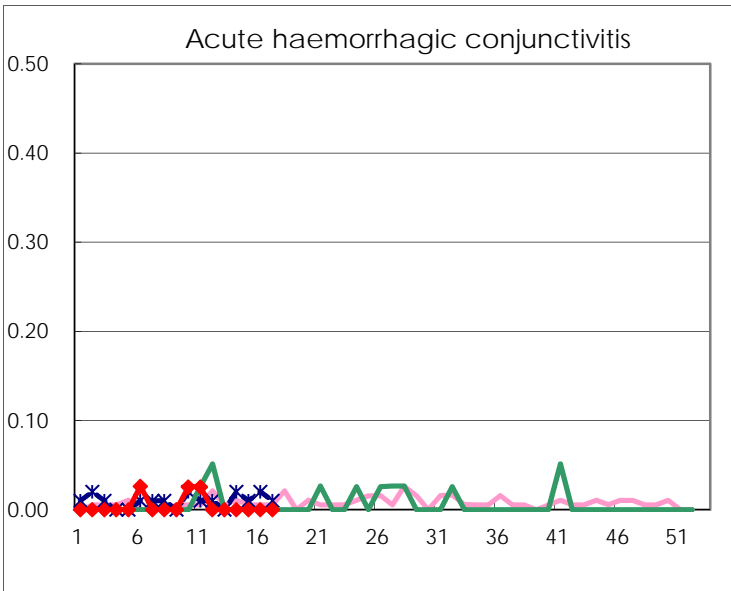
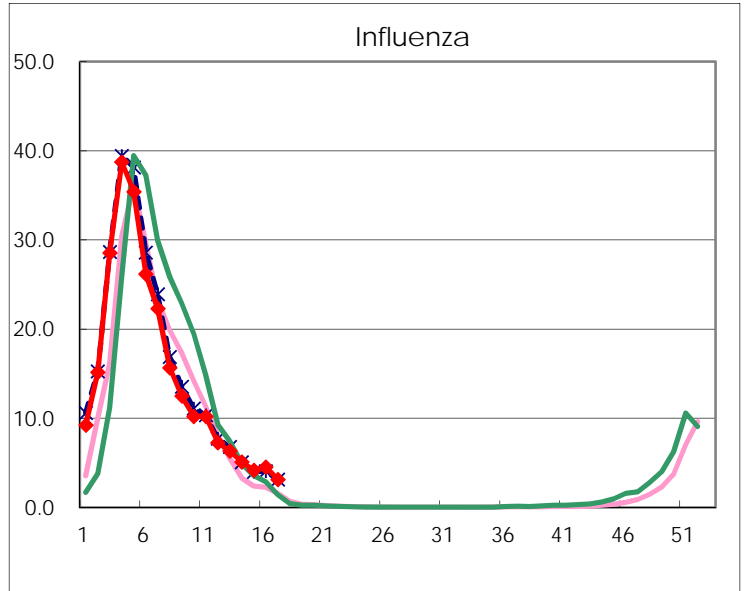
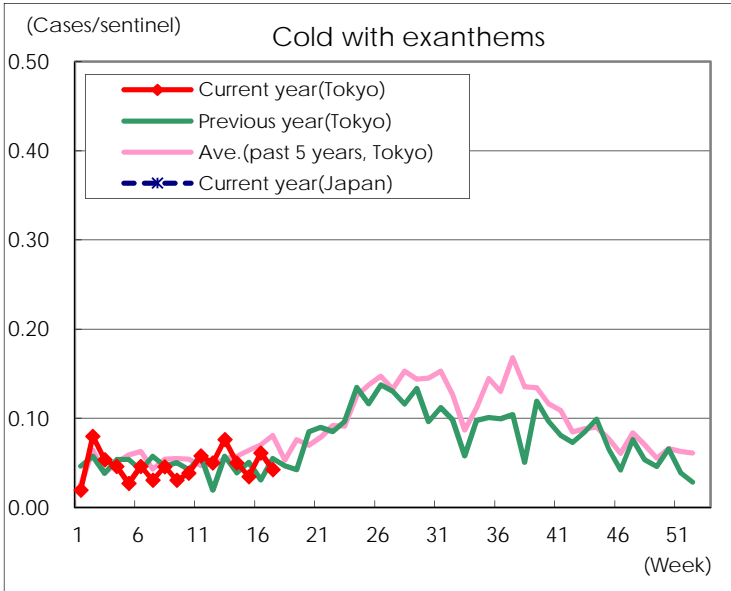
Diseases	Tokyo				
	14th	15th	16th	17th	/sentinel
Respiratory syncytial virus infection	27	62	72	70	0.27
Pharyngoconjunctival fever	60	56	82	102	0.39
Group A streptococcal pharyngitis	456	559	663	671	2.58
Infectious gastroenteritis	1,882	2,093	2,226	2,107	8.10
Chickenpox	83	89	84	109	0.42
Hand, foot, and mouth disease	20	32	33	42	0.16
Erythema infectiosum	30	27	33	21	0.08
Exanthem subitum	135	109	174	163	0.63
Pertussis	2	1	2	2	0.01
Herpangina	3	5	3	5	0.02
Mumps	73	54	41	42	0.16
Kawasaki disease	1	2	4	3	0.01
Cold with exanthems	13	9	16	11	0.04
Influenza	2,114	1,716	1,872	1,285	3.12
Acute hemorrhagic conjunctivitis					
Epidemic keratoconjunctivitis	15	15	23	18	0.46
Bacterial meningitis	1		1		
Aseptic meningitis		1	2	1	0.04
Mycoplasma pneumonia	2	1	3	3	0.13
Chlamydial pneumonia (excluding psittacosis)	1	3	2		
Infectious gastroenteritis (only by Rotavirus)	16	10	16	6	0.25
Influenza-Associated Hospitalizations	9	6	9	6	0.25

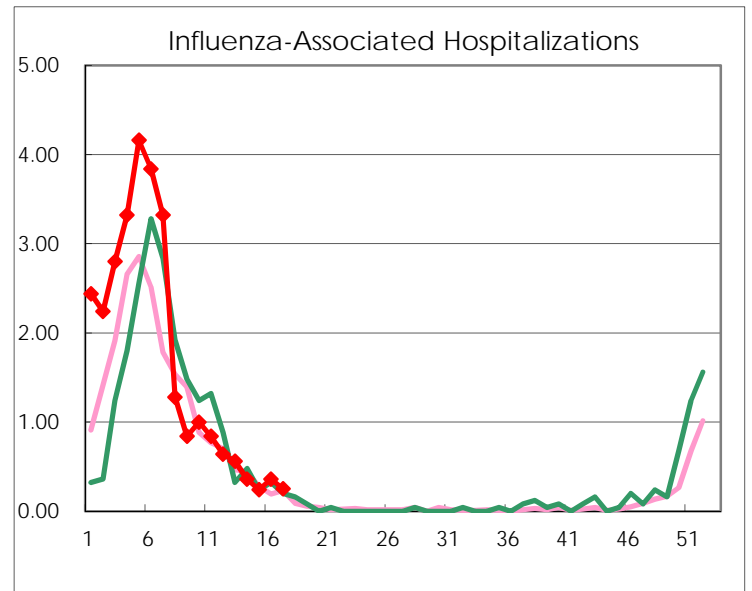
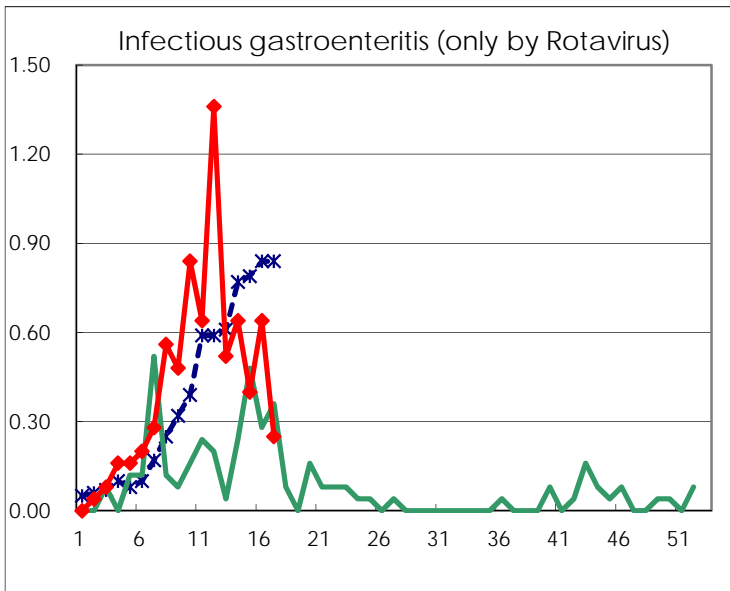
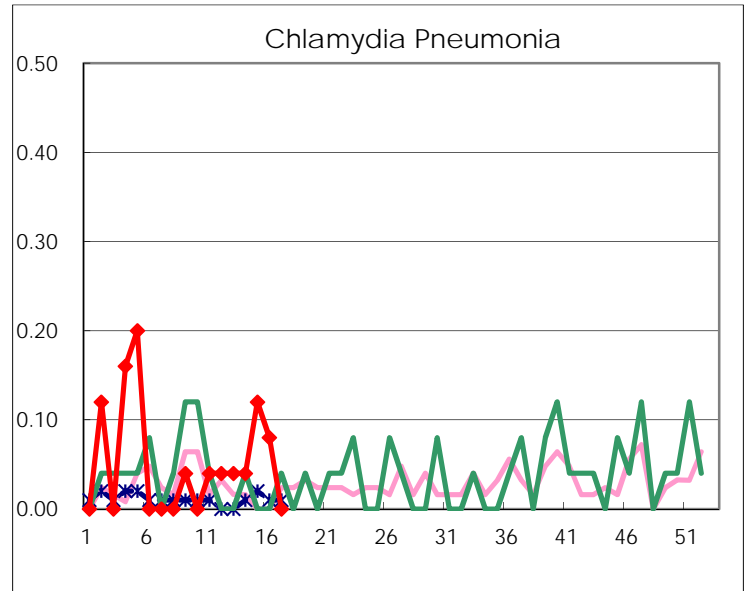
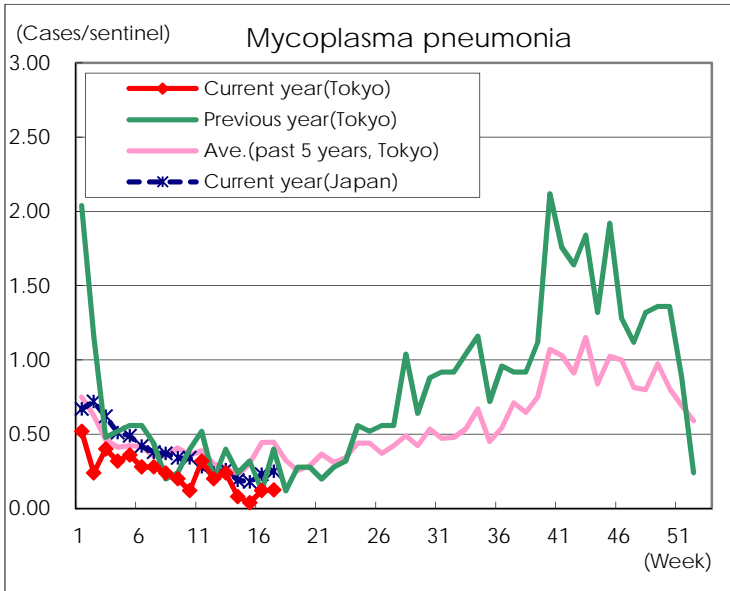
(Blank means 0.)

Disease Trend Graph (weekly reported cases per sentinel in comparison)









Number of sentinel facilities for weekly reporting		
Types of sentinels	Number of sentinels	Sentinels having reported
Pediatric	264	260
Influenza	419	412
Ophthalmic	39	39
Specially-designated	25	24