

**18 May 2017 / Number 19**

## Surveillance System in Tokyo, Japan

The infectious diseases which all physicians must report

All physicians must report to health centers the incidence of the diseases which are shown at page one. Health centers electronically report the individual cases to Tokyo Metropolitan Infectious Disease Surveillance Center.

The infectious diseases required to be reported by the sentinels

The numbers of patients who visit the sentinel clinics or hospitals during a week are reported to health centers in Tokyo. And they electronically report the numbers to Tokyo Metropolitan Infectious Disease Surveillance Center. We have about 500 sentinel clinics and hospitals in Tokyo.

Tokyo Metropolitan Institute of Public Health

TEL:81-3-3363-3213 FAX:81-3-5332-7365

e-mail:[www@tokyo-eiken.go.jp](mailto:www@tokyo-eiken.go.jp)

URL:[idsc.tokyo-eiken.go.jp/](http://idsc.tokyo-eiken.go.jp/)

---

Number of patients with the diseases which all physicians must report

Category	Diseases	Tokyo					Japan	
		16th	17th	18th	19th	Cum 2017	19th	Cum 2017
I	Ebola hemorrhagic fever							
	Crimean-Congo hemorrhagic fever							
	Smallpox							
	South American hemorrhagic fever							
	Plague							
	Marburg disease							
II	Lassa fever							
	Acute poliomyelitis							
	Tuberculosis	62	75	36	52	1,165	355	7,648
	Diphtheria							
	Severe Acute Respiratory Syndrome(SARS)							
	Middle East Respiratory Syndrome (MERS)							
III	Avian influenza H5N1							
	Avian influenza H7N9							
	Cholera							
	Shigellosis	1			1	15		54
	Enterohemorrhagic Escherichia coli infection	5	2	1	1	36	25	348
IV	Typhoid fever		1			2		14
	Paratyphoid fever					2	1	6
	Hepatitis E	2	3	1	3	26	12	142
	West Nile fever							
	Hepatitis A	4	3		1	36	11	111
	Echinococcosis							12
	Yellow fever							
	Psittacosis							5
	Omsk hemorrhagic fever							
	Relapsing fever							
	Kyasanur forest disease							
	Q fever							
	Rabies							
	Coccidioidomycosis							
	Monkeypox							
	Zika virus infection							1
	Severe Fever with Thrombocytopenia Syndrome						8	13
	Hemorrhagic fever with renal syndrome							
	Western equine encephalitis							
	Tick-borne encephalitis							
	Anthrax							
	Chikungunya fever		1			1		1
	Scrub typhus(Tsutsugamushi disease)					2	8	58
	Dengue fever		1		1	18	3	67
	Eastern equine encephalitis							
	Avian influenza (excluding H5N1 and H7N9)							
	Nipah virus infection							
	Japanese spotted fever						2	16
	Japanese encephalitis							
	Hantavirus pulmonary syndrome							
	Herpes B virus infection							
	Glanders							
Brucellosis							1	
Venezuelan equine encephalitis								
Hendra virus infection								
Epidemic typhus								
Botulism					1		1	
Malaria				1	5		12	
Tularemia								
Lyme disease							1	
Lyssavirus infection(excluding rabies)								
Rift valley fever								
Melioidosis								
Legionellosis	1	1	4	3	44	26	420	
Leptospirosis					1		2	
Rocky mountain spotted fever								

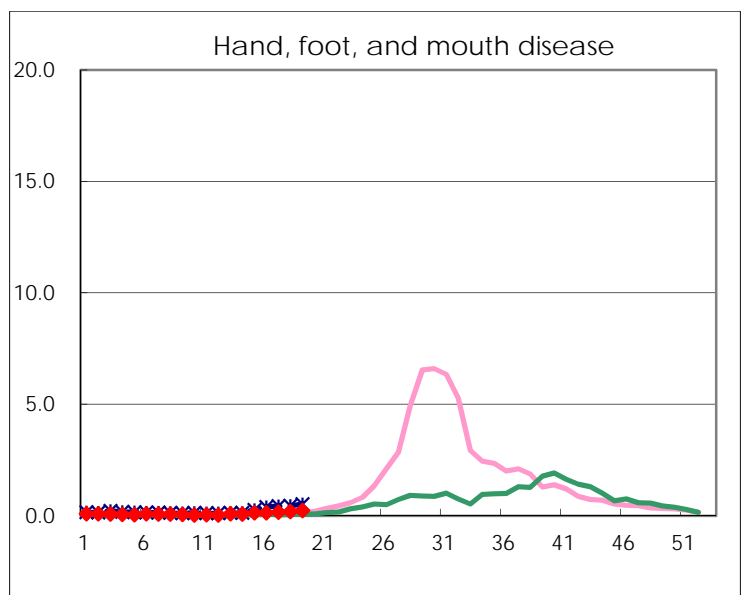
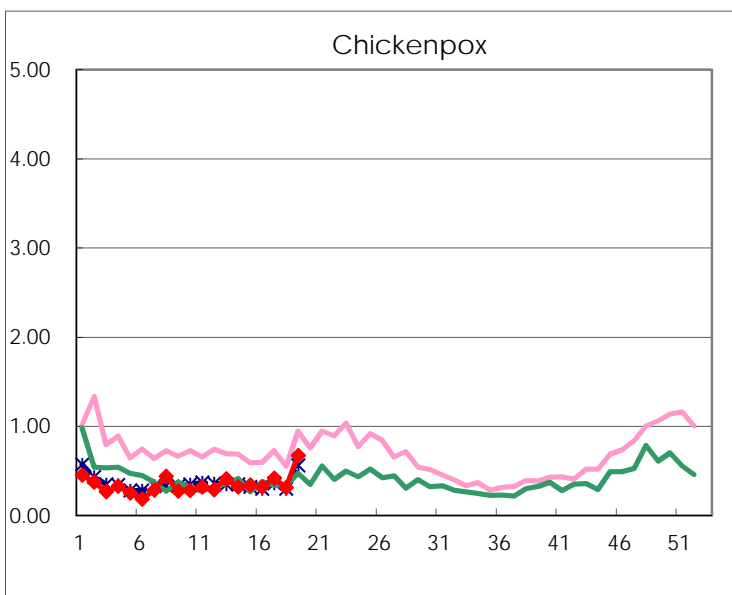
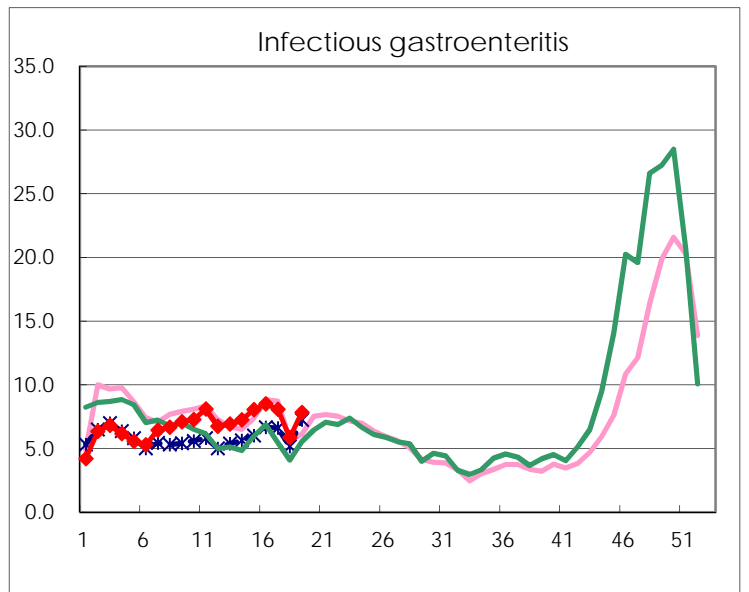
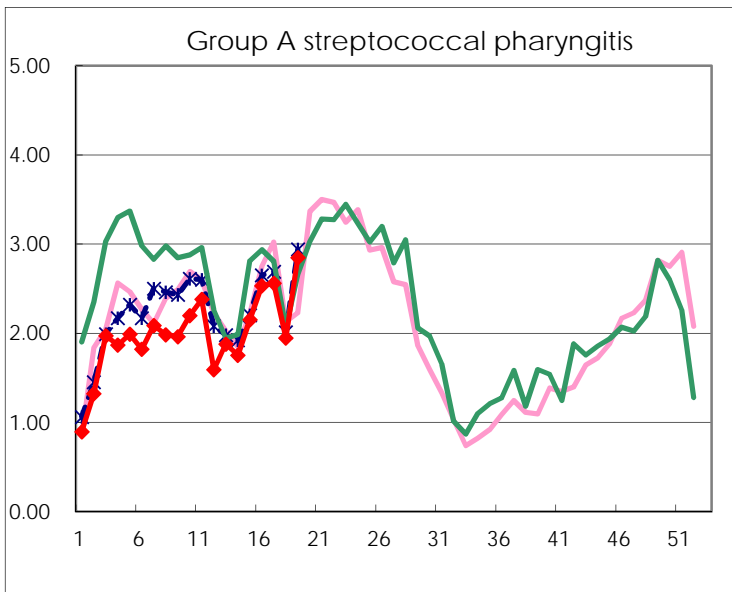
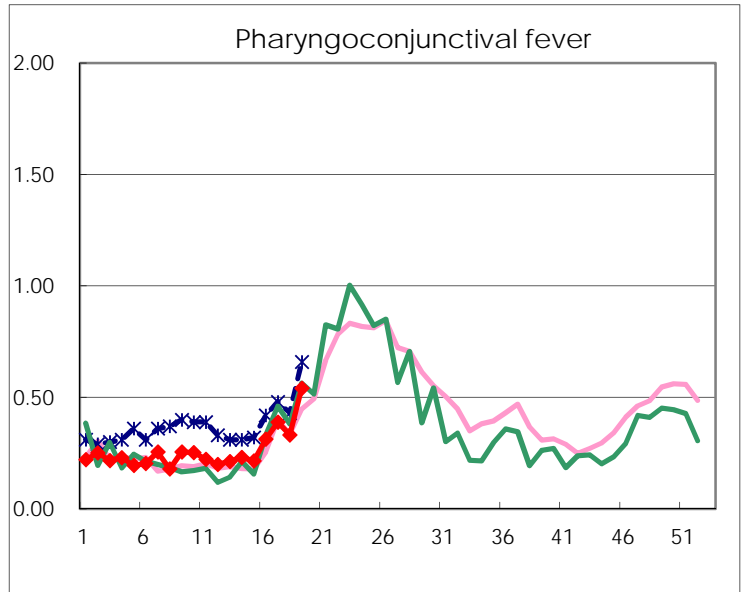
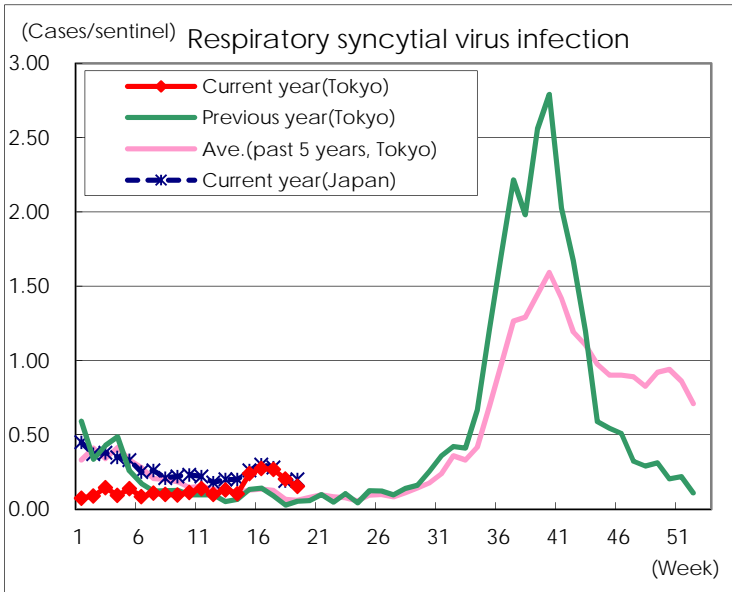
Category	Diseases	Tokyo					Japan	
		16th	17th	18th	19th	Cum 2017	19th	Cum 2017
V	Amebiasis	2	3		4	76	15	382
	Viral hepatitis(excluding hepatitis A and E)	2	1			21	5	102
	CRE infection	5	2	3	5	68	21	495
	Acute encephalitis(excluding JE and WNE)	3	1	2		28	9	276
	Cryptosporidiosis							2
	Creutzfeldt-Jakob disease					7	2	63
	Severe invasive streptococcal infections(TSLS)		1	1	1	28	12	218
	Acquired immunodeficiency syndrome (AIDS)	11	7	3	10	162	14	456
	Giardiasis	1	1			10		24
	Invasive <i>Haemophilus influenzae</i> disease			1	3	18	8	143
	Invasive meningococcal disease					1		11
	Invasive pneumococcal disease	10	10	11	16	199	83	1,480
	Varicella (limited to hospitalized case)	2		2	1	16	6	90
	Congenital rubella syndrome							
	Syphilis	34	38	18	53	565	93	1,711
	Disseminated cryptococcosis					7		54
	Tetanus					1		23
	Vancomycin-resistant <i>S. aureus</i> infection							
	Vancomycin-resistant Enterococcus infection	1				4		29
	Rubella	1	1	1		6		33
Measles		1			17	3	151	
MDRA infection	1				1		11	

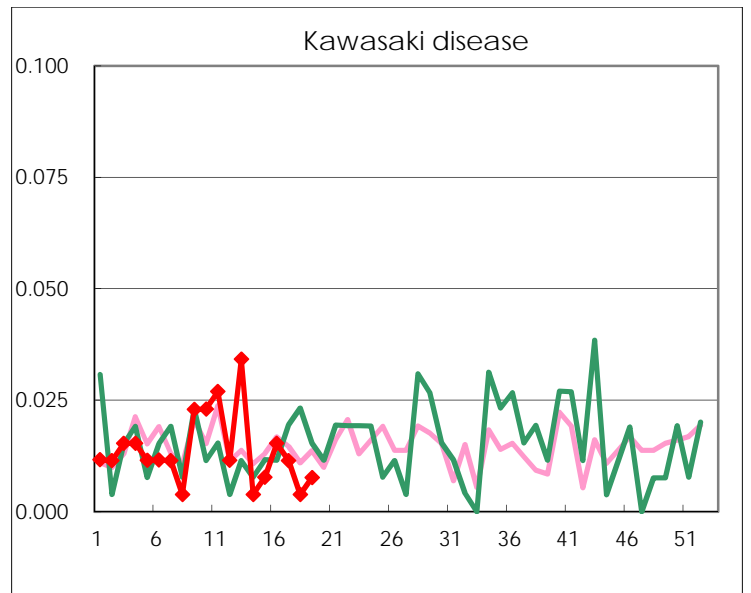
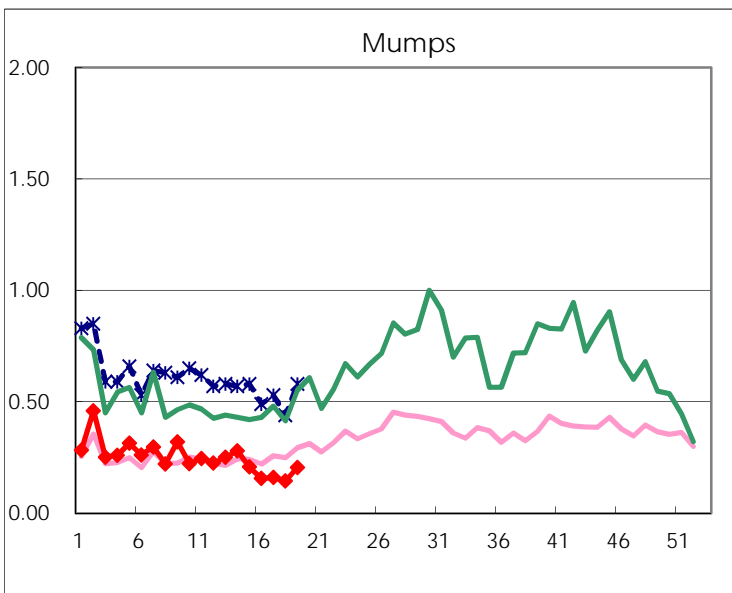
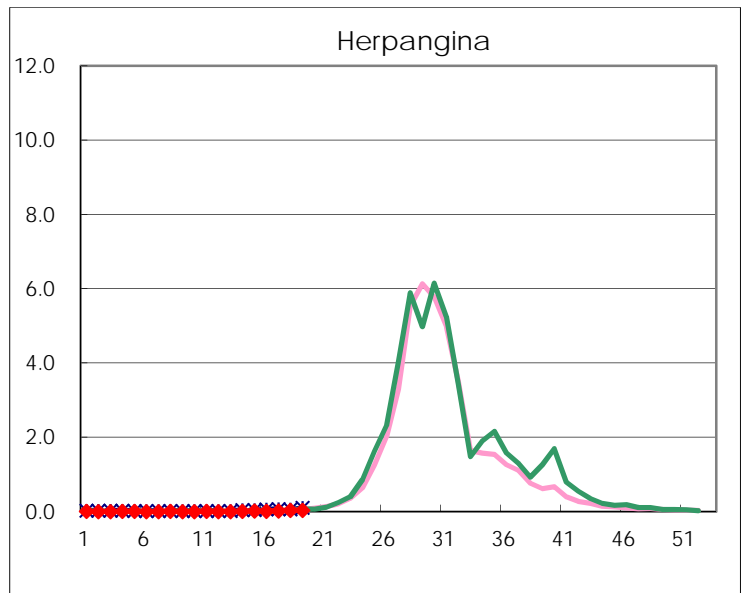
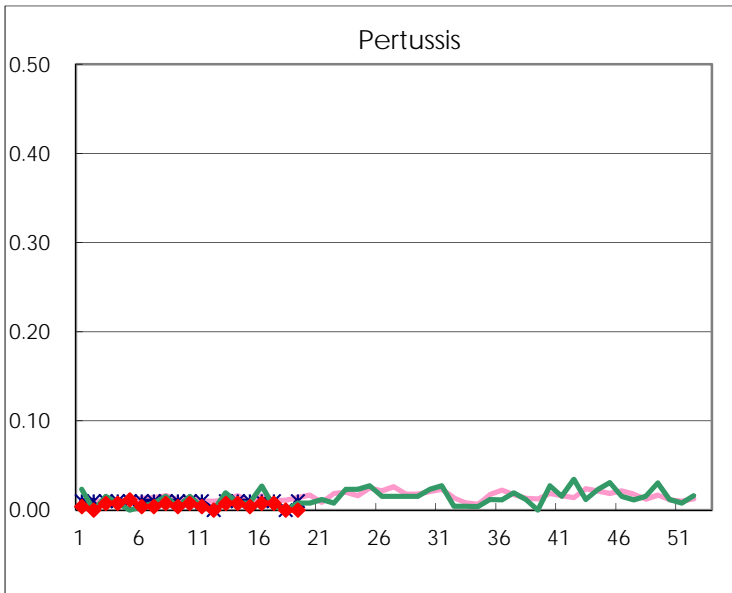
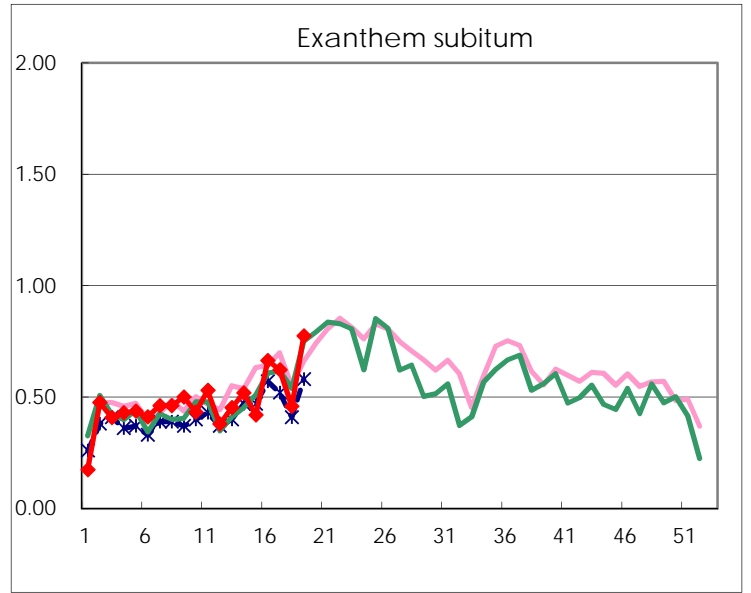
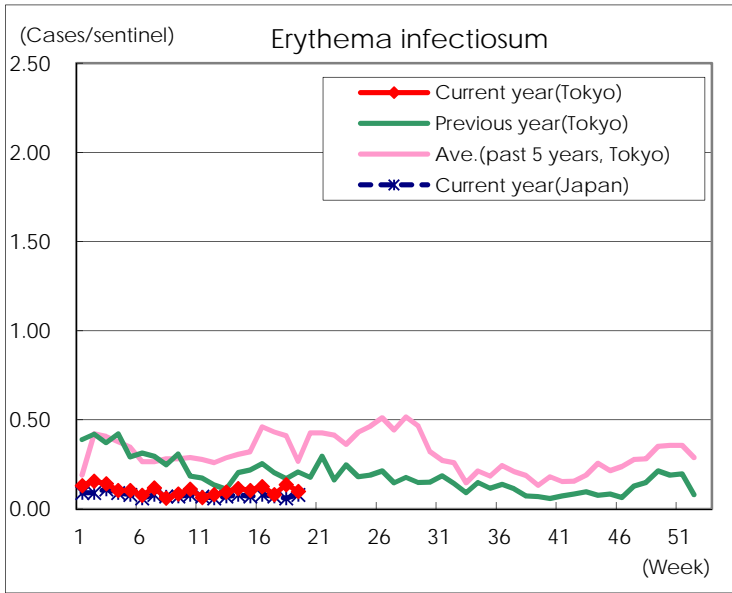
Number of patients with the diseases to be reported  
by the designated clinics and hospitals

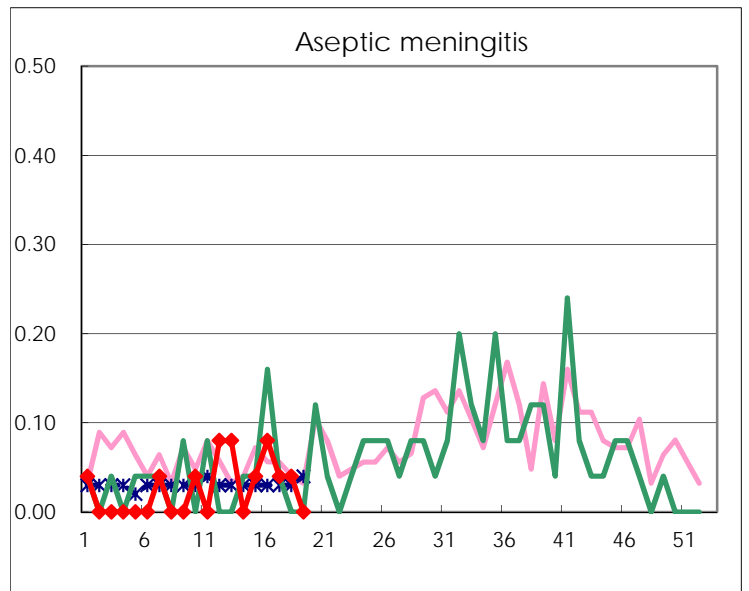
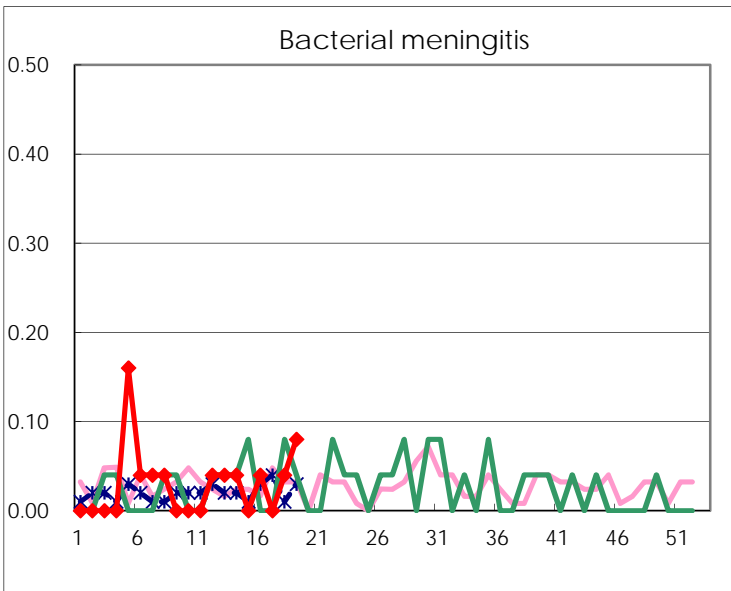
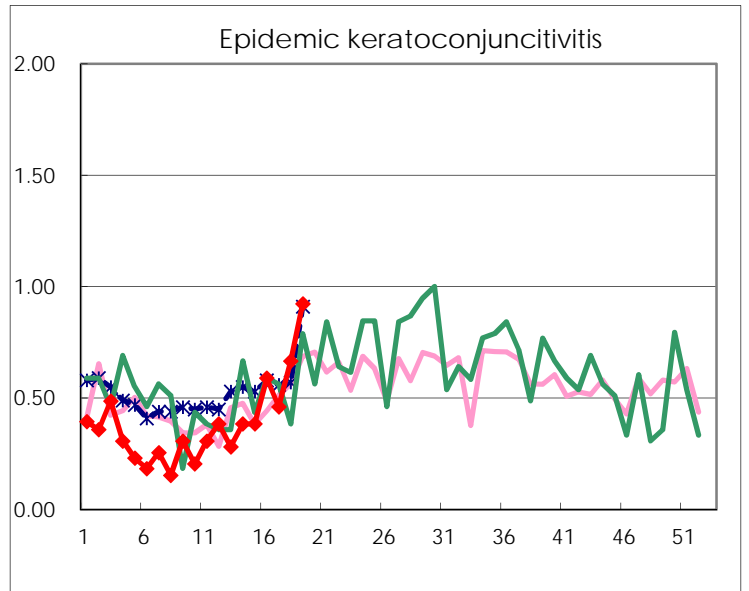
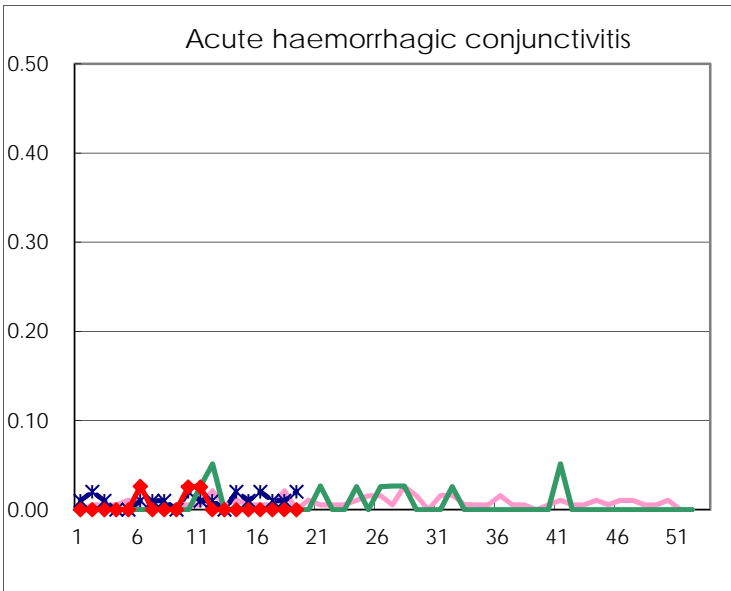
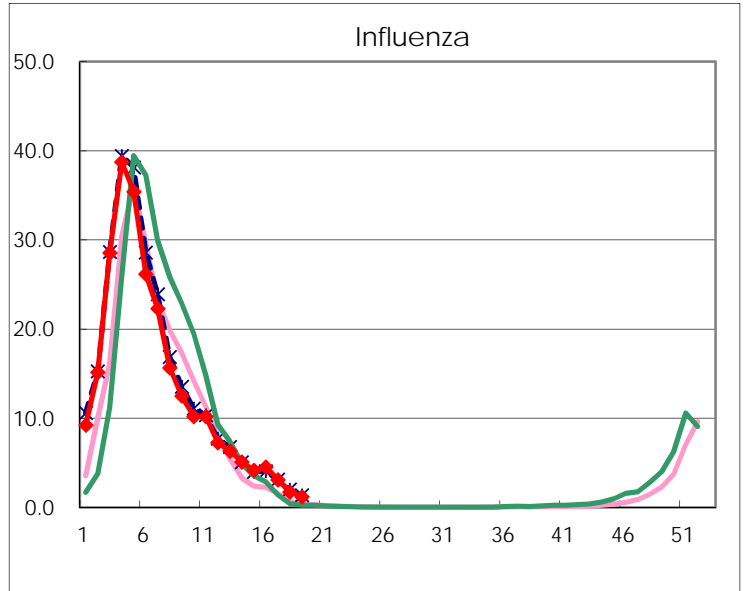
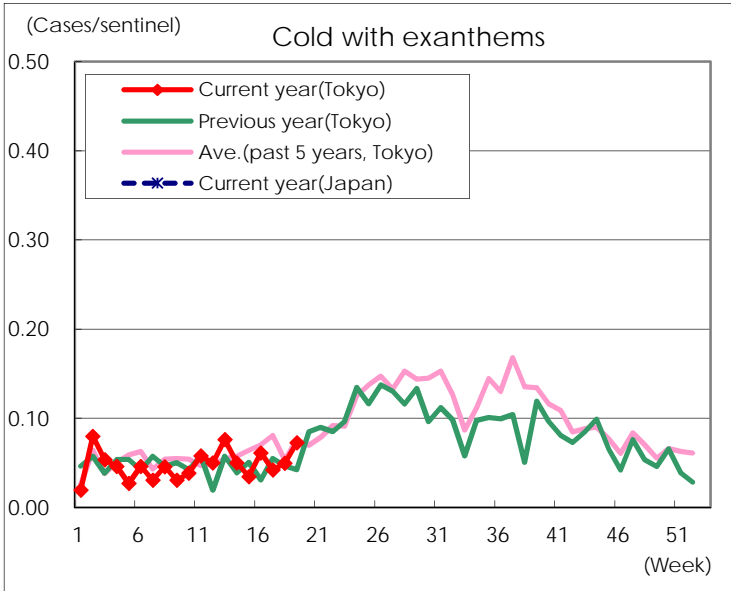
Diseases	Tokyo				
	16th	17th	18th	19th	/sentinel
Respiratory syncytial virus infection	72	70	53	40	0.15
Pharyngoconjunctival fever	82	102	87	142	0.54
Group A streptococcal pharyngitis	663	671	510	746	2.85
Infectious gastroenteritis	2,226	2,117	1,532	2,051	7.83
Chickenpox	84	109	82	176	0.67
Hand, foot, and mouth disease	33	42	48	61	0.23
Erythema infectiosum	33	21	36	26	0.10
Exanthem subitum	174	163	120	203	0.77
Pertussis	2	2			
Herpangina	3	5	10	10	0.04
Mumps	41	42	38	54	0.21
Kawasaki disease	4	3	1	2	0.01
Cold with exanthems	16	11	13	19	0.07
Influenza	1,872	1,285	724	495	1.20
Acute hemorrhagic conjunctivitis					
Epidemic keratoconjunctivitis	23	18	26	36	0.92
Bacterial meningitis	1		1	2	0.08
Aseptic meningitis	2	1	1		
Mycoplasma pneumonia	3	3	1	2	0.08
Chlamydial pneumonia (excluding psittacosis)	2				
Infectious gastroenteritis (only by Rotavirus)	16	6	7	13	0.52
Influenza-Associated Hospitalizations	9	6	7	5	0.20

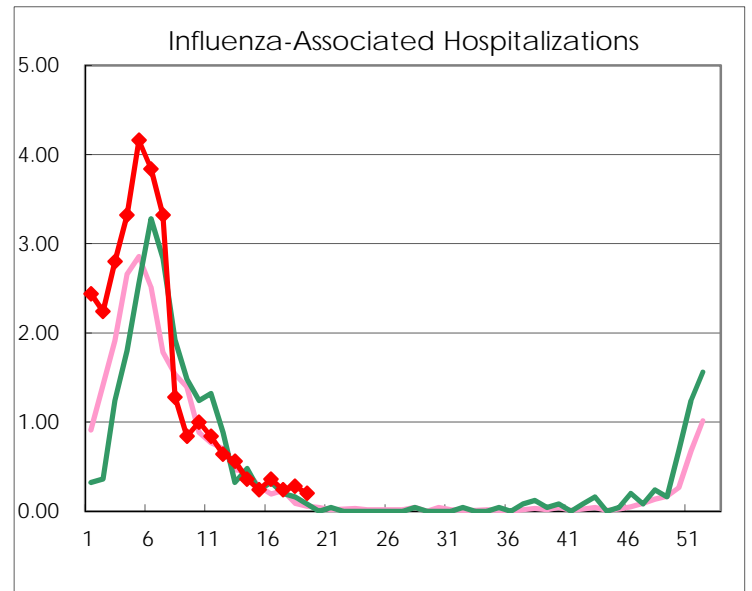
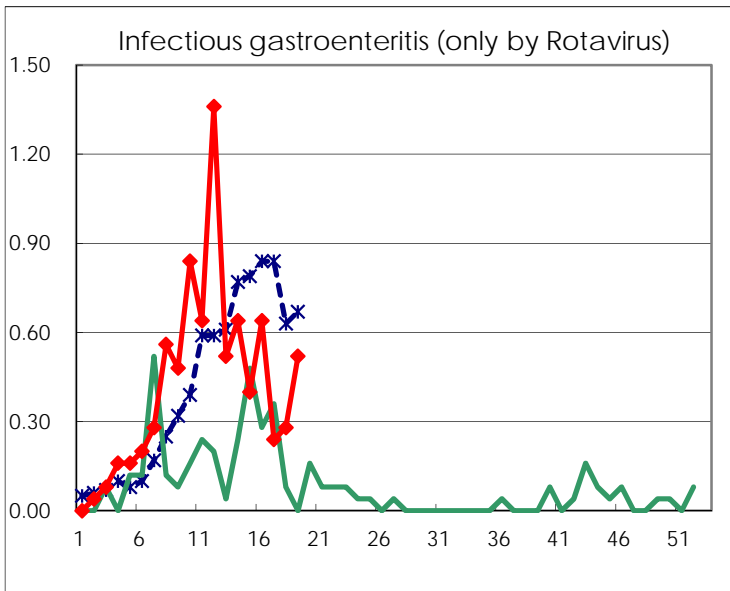
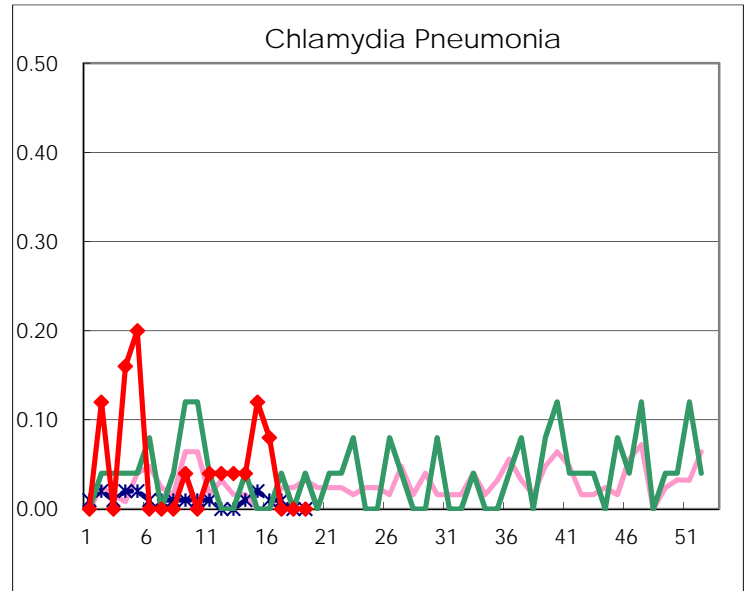
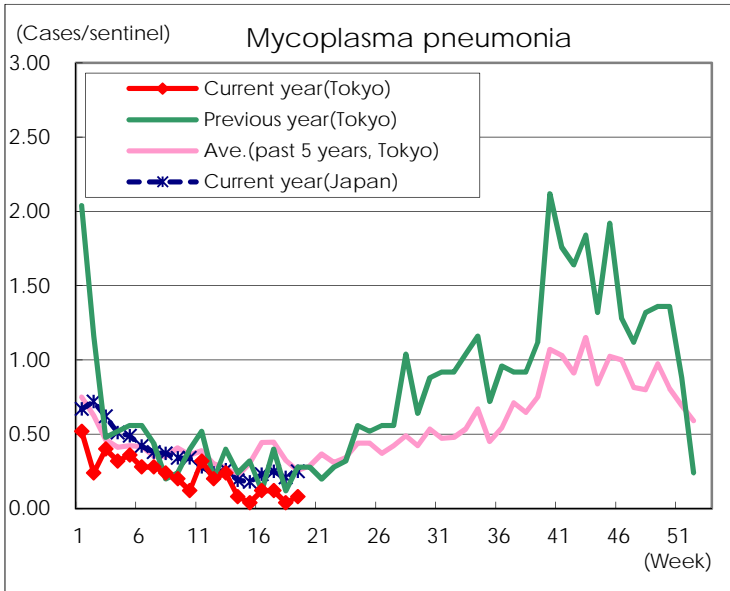
( Blank means 0. )

# Disease Trend Graph (weekly reported cases per sentinel in comparison)









Number of sentinel facilities for weekly reporting		
Types of sentinels	Number of sentinels	Sentinels having reported
Pediatric	264	262
Influenza	419	414
Ophthalmic	39	39
Specially-designated	25	25