

**25 May 2017 / Number 20**

## Surveillance System in Tokyo, Japan

The infectious diseases which all physicians must report

All physicians must report to health centers the incidence of the diseases which are shown at page one. Health centers electronically report the individual cases to Tokyo Metropolitan Infectious Disease Surveillance Center.

The infectious diseases required to be reported by the sentinels

The numbers of patients who visit the sentinel clinics or hospitals during a week are reported to health centers in Tokyo. And they electronically report the numbers to Tokyo Metropolitan Infectious Disease Surveillance Center. We have about 500 sentinel clinics and hospitals in Tokyo.

Tokyo Metropolitan Institute of Public Health

TEL:81-3-3363-3213 FAX:81-3-5332-7365

e-mail:[www@tokyo-eiken.go.jp](mailto:www@tokyo-eiken.go.jp)

URL:[idsc.tokyo-eiken.go.jp/](http://idsc.tokyo-eiken.go.jp/)

---

Number of patients with the diseases which all physicians must report

Category	Diseases	Tokyo					Japan		
		17th	18th	19th	20th	Cum 2017	20th	Cum 2017	
I	Ebola hemorrhagic fever								
	Crimean-Congo hemorrhagic fever								
	Smallpox								
	South American hemorrhagic fever								
	Plague								
	Marburg disease								
	Lassa fever								
II	Acute poliomyelitis								
	Tuberculosis	78	39	56	72	1,246	359	8,099	
	Diphtheria								
	Severe Acute Respiratory Syndrome(SARS)								
	Middle East Respiratory Syndrome (MERS)								
	Avian influenza H5N1								
	Avian influenza H7N9								
III	Cholera				1	1	1	1	
	Shigellosis			1	2	17	3	57	
	Enterohemorrhagic Escherichia coli infection	2	1	1	3	39	34	388	
	Typhoid fever	1				2		14	
	Paratyphoid fever					2		6	
IV	Hepatitis E	3	1	3	1	27	2	146	
	West Nile fever								
	Hepatitis A	3		1	1	37	5	118	
	Echinococcosis							14	
	Yellow fever								
	Psittacosis							5	
	Omsk hemorrhagic fever								
	Relapsing fever								
	Kyasanur forest disease								
	Q fever								
	Rabies								
	Coccidioidomycosis								
	Monkeypox								
	Zika virus infection							1	
	Severe Fever with Thrombocytopenia Syndrome							3	16
	Hemorrhagic fever with renal syndrome								
	Western equine encephalitis								
	Tick-borne encephalitis								
	Anthrax								
	Chikungunya fever	1					1		1
	Scrub typhus(Tsutsugamushi disease)						2	7	66
	Dengue fever	1		1			18	3	70
	Eastern equine encephalitis								
	Avian influenza (excluding H5N1 and H7N9)								
	Nipah virus infection								
	Japanese spotted fever							10	27
	Japanese encephalitis								
	Hantavirus pulmonary syndrome								
	Herpes B virus infection								
	Glanders								
	Brucellosis								1
	Venezuelan equine encephalitis								
Hendra virus infection									
Epidemic typhus									
Botulism						1		1	
Malaria			1			5		12	
Tularemia									
Lyme disease								1	
Lyssavirus infection(excluding rabies)									
Rift valley fever									
Melioidosis									
Legionellosis	1	4	3	4	48	16	441		
Leptospirosis						1	1	3	
Rocky mountain spotted fever									

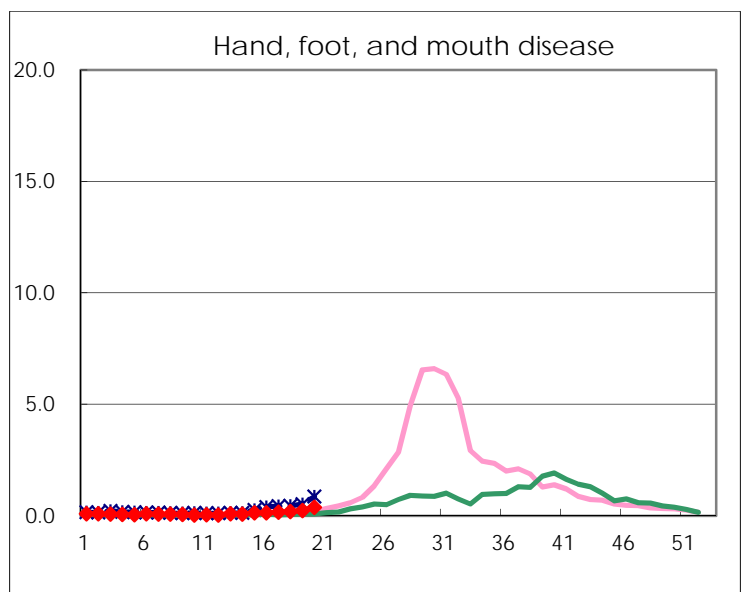
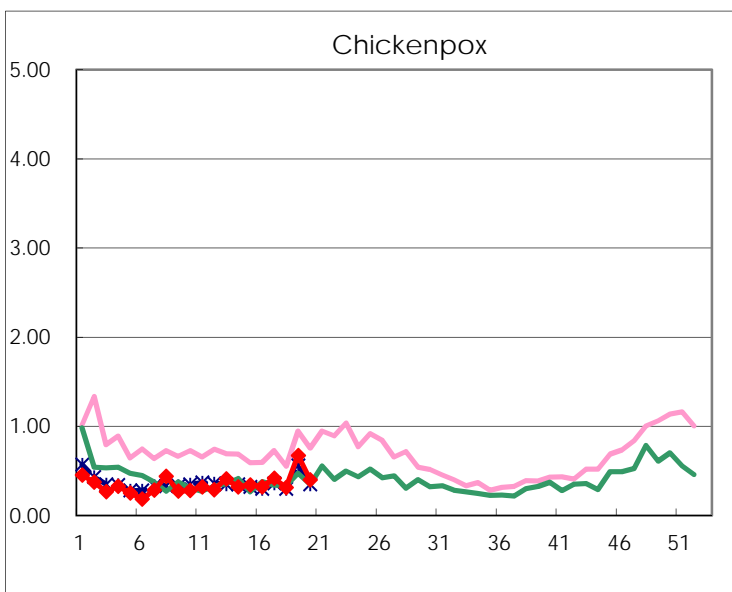
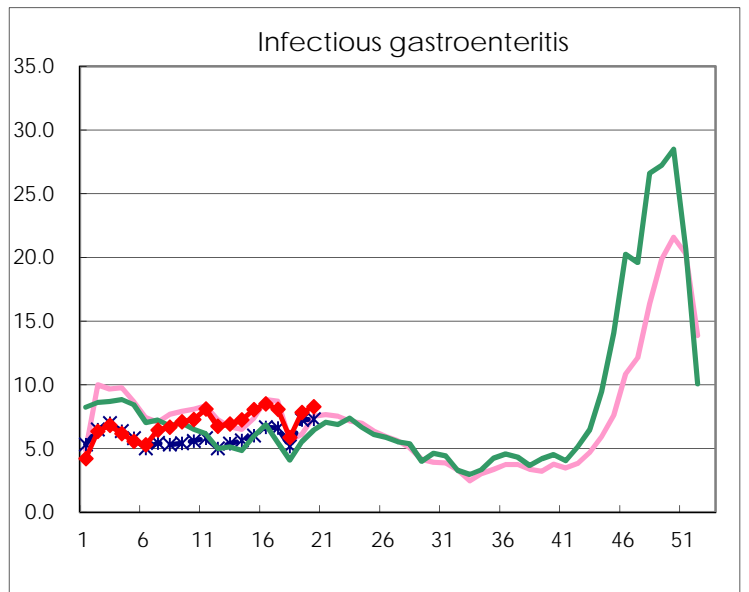
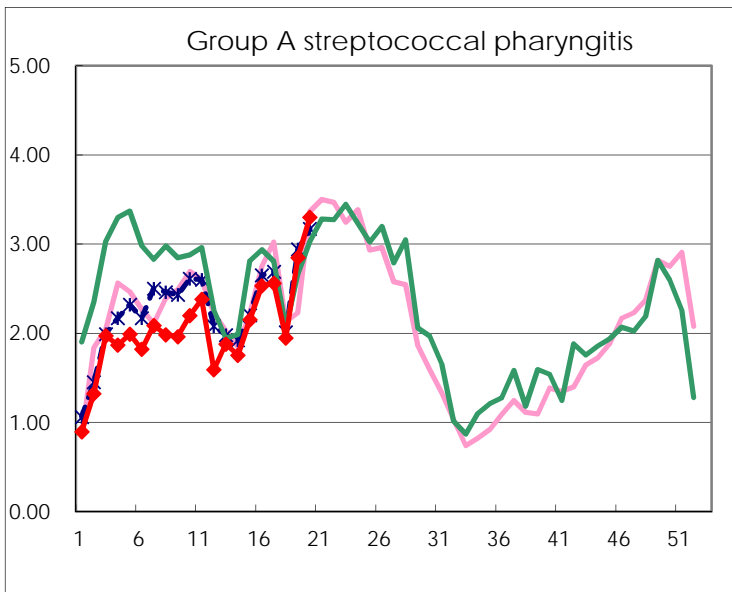
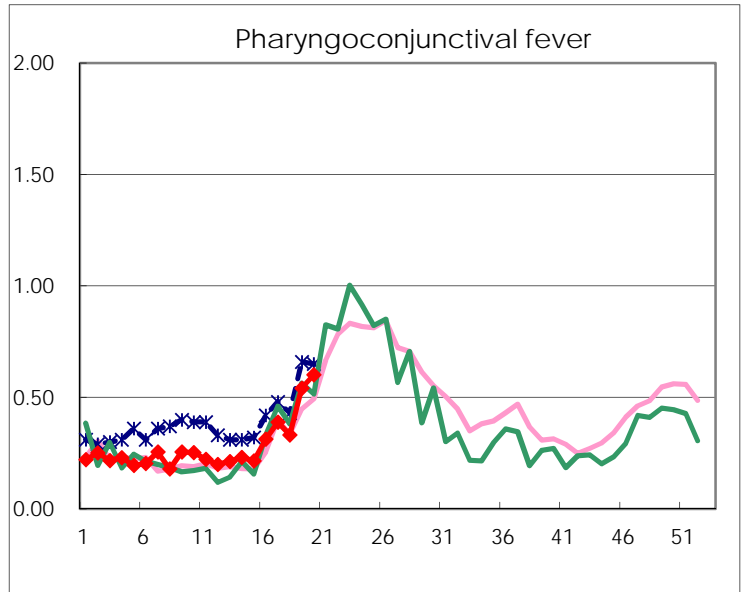
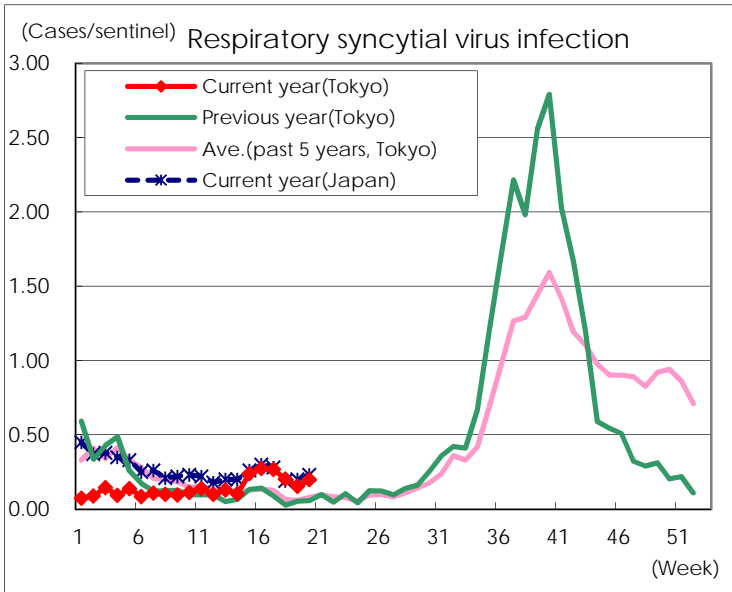
Category	Diseases	Tokyo					Japan	
		17th	18th	19th	20th	Cum 2017	20th	Cum 2017
V	Amebiasis	3		4	3	79	12	398
	Viral hepatitis(excluding hepatitis A and E)	1				21	4	111
	CRE infection	2	3	5	5	73	18	532
	Acute encephalitis(excluding JE and WNE)	1	2		1	29	13	297
	Cryptosporidiosis						1	3
	Creutzfeldt-Jakob disease					7	2	68
	Severe invasive streptococcal infections(TSLS)	1	1	1	3	31	7	229
	Acquired immunodeficiency syndrome (AIDS)	7	3	11	8	171	25	488
	Giardiasis	1			3	13	3	28
	Invasive <i>Haemophilus influenzae</i> disease		1	3	1	19	7	152
	Invasive meningococcal disease					1	1	12
	Invasive pneumococcal disease	10	11	15	17	215	74	1,584
	Varicella (limited to hospitalized case)		2	2		17	5	99
	Congenital rubella syndrome							
	Syphilis	38	18	53	48	613	96	1,837
	Disseminated cryptococcosis				1	8		54
	Tetanus					1	2	26
	Vancomycin-resistant <i>S. aureus</i> infection							
	Vancomycin-resistant Enterococcus infection					4		29
	Rubella	1	1		1	7	1	34
Measles	1				17	4	163	
MDRA infection					1		11	

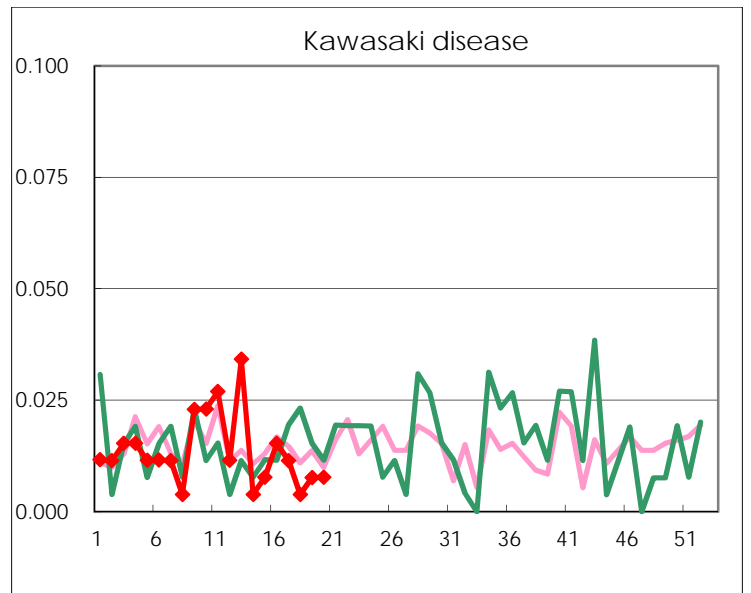
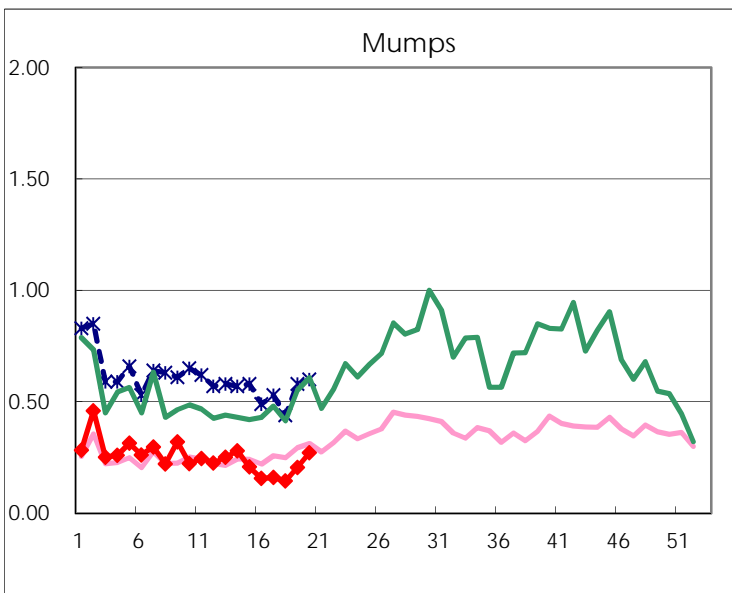
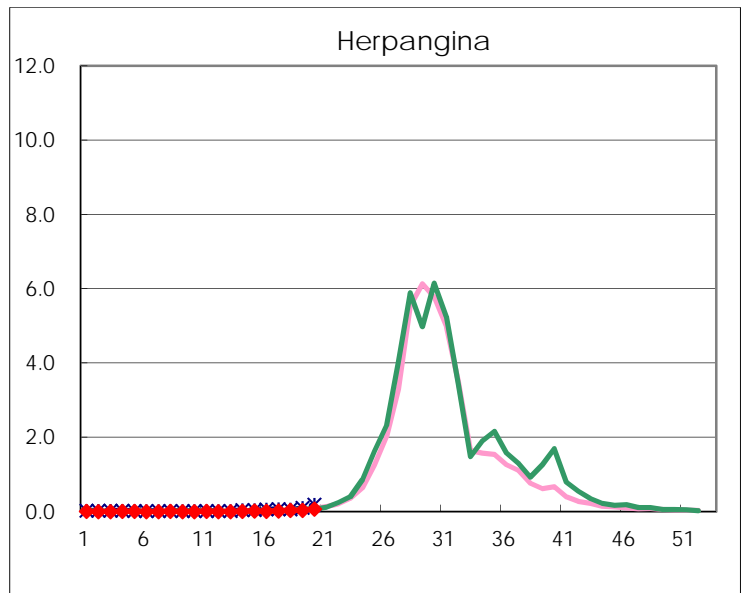
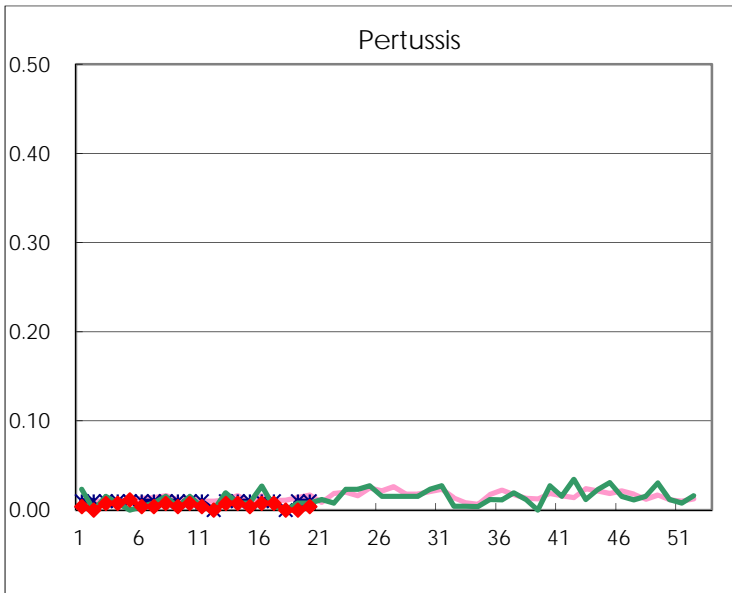
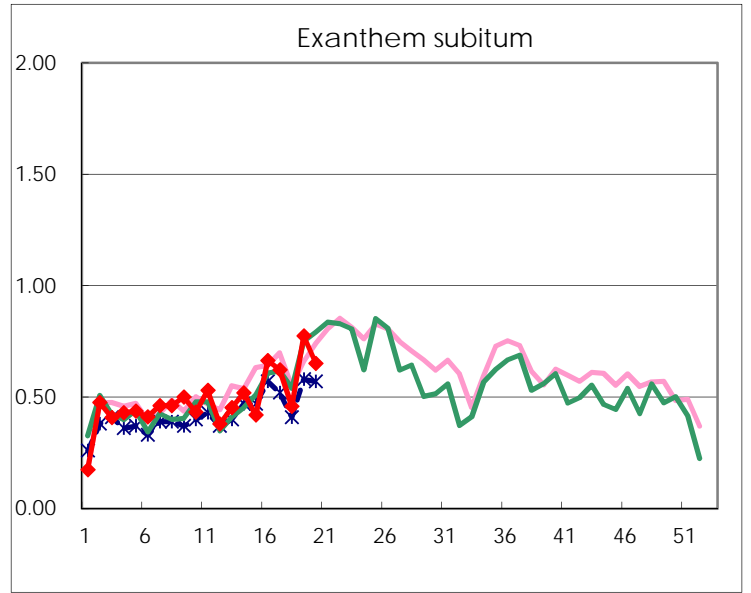
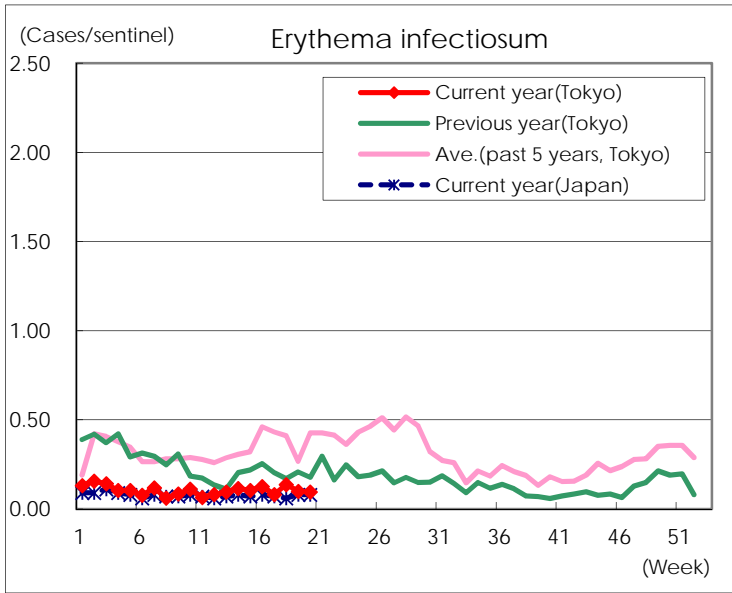
Number of patients with the diseases to be reported  
by the designated clinics and hospitals

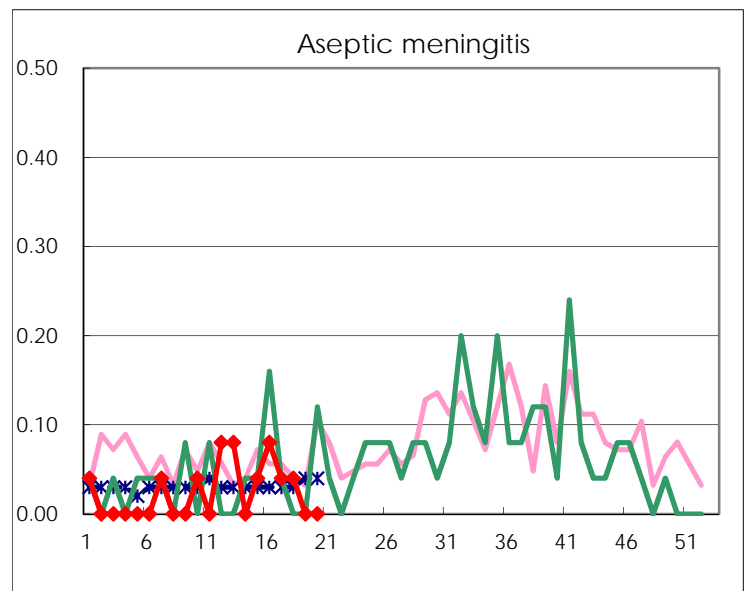
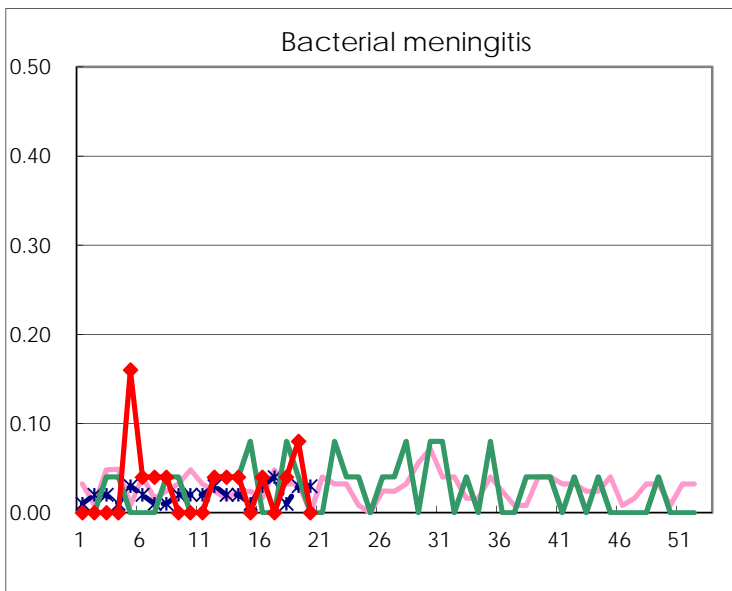
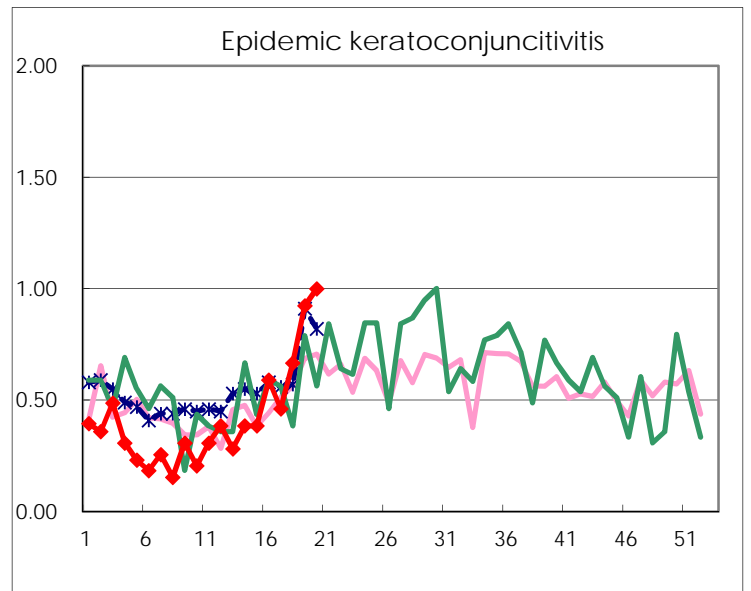
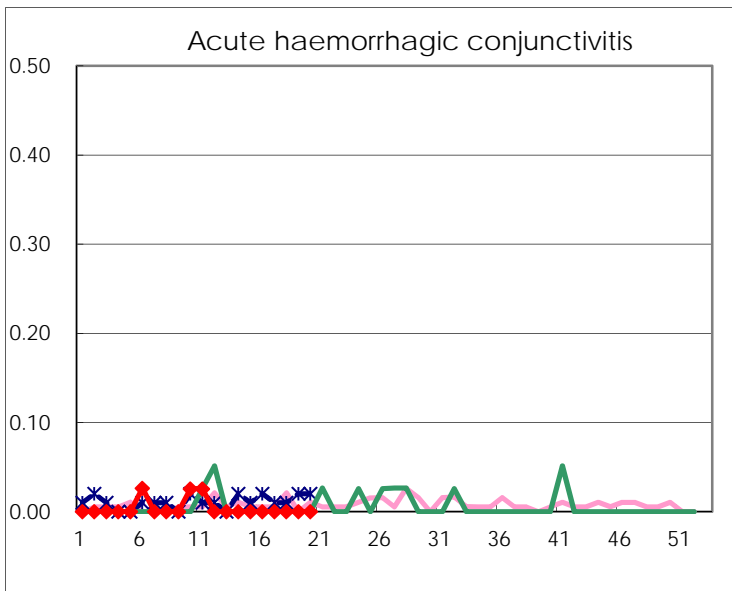
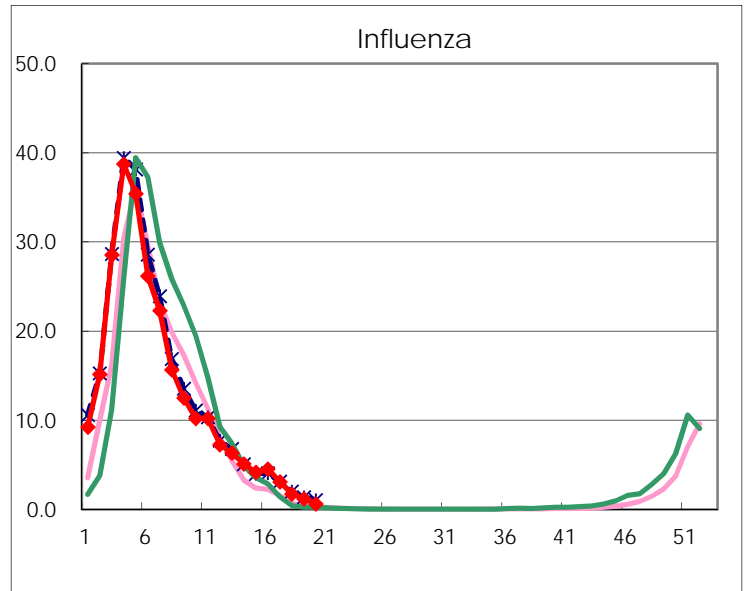
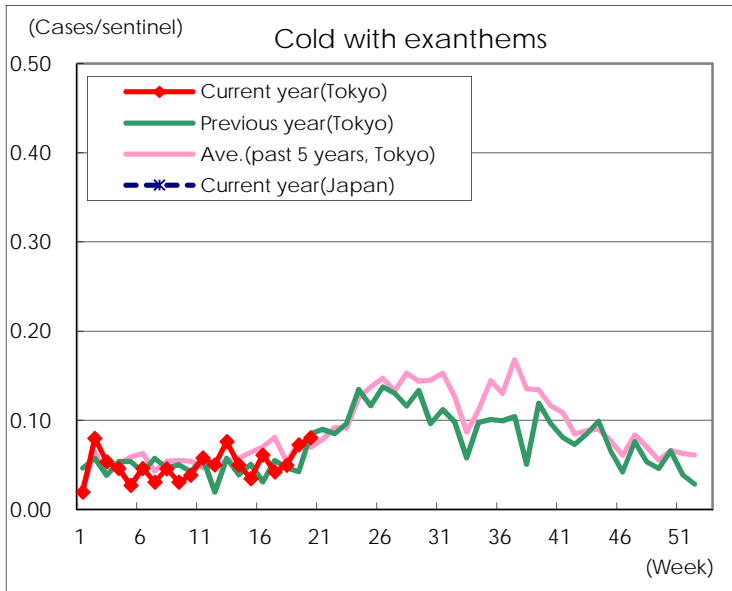
Diseases	Tokyo				
	17th	18th	19th	20th	/sentinel
Respiratory syncytial virus infection	70	53	40	52	0.20
Pharyngoconjunctival fever	102	87	142	157	0.60
Group A streptococcal pharyngitis	671	510	746	861	3.30
Infectious gastroenteritis	2,117	1,532	2,051	2,158	8.27
Chickenpox	109	82	176	104	0.40
Hand, foot, and mouth disease	42	48	61	96	0.37
Erythema infectiosum	21	36	26	25	0.10
Exanthem subitum	163	120	203	170	0.65
Pertussis	2			1	
Herpangina	5	10	10	19	0.07
Mumps	42	38	54	71	0.27
Kawasaki disease	3	1	2	2	0.01
Cold with exanthems	11	13	19	21	0.08
Influenza	1,285	724	496	251	0.61
Acute hemorrhagic conjunctivitis					
Epidemic keratoconjunctivitis	18	26	36	38	1.00
Bacterial meningitis		1	2		
Aseptic meningitis	1	1			
Mycoplasma pneumonia	3	1	2	2	0.08
Chlamydial pneumonia (excluding psittacosis)				1	0.04
Infectious gastroenteritis (only by Rotavirus)	6	7	13	6	0.24
Influenza-Associated Hospitalizations	6	7	5		

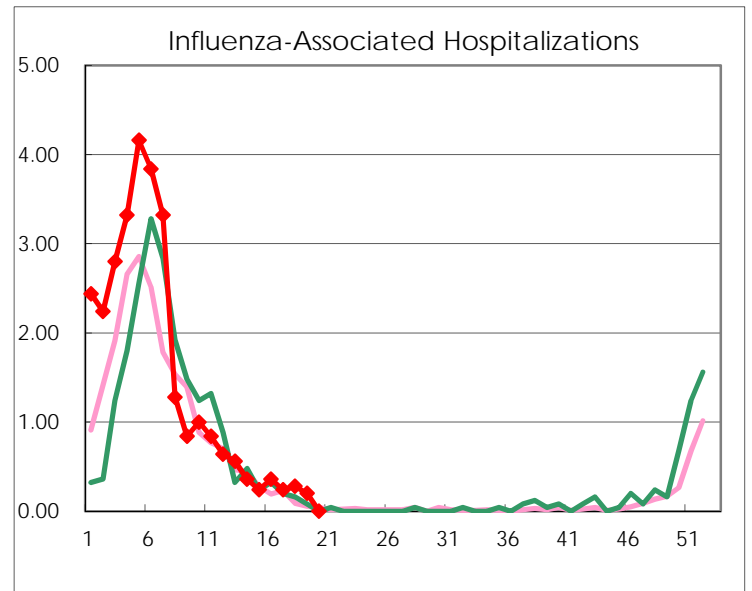
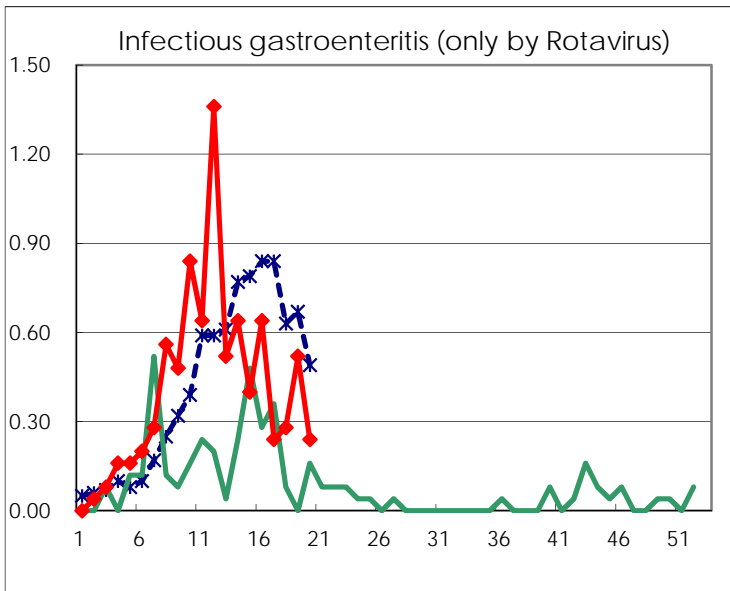
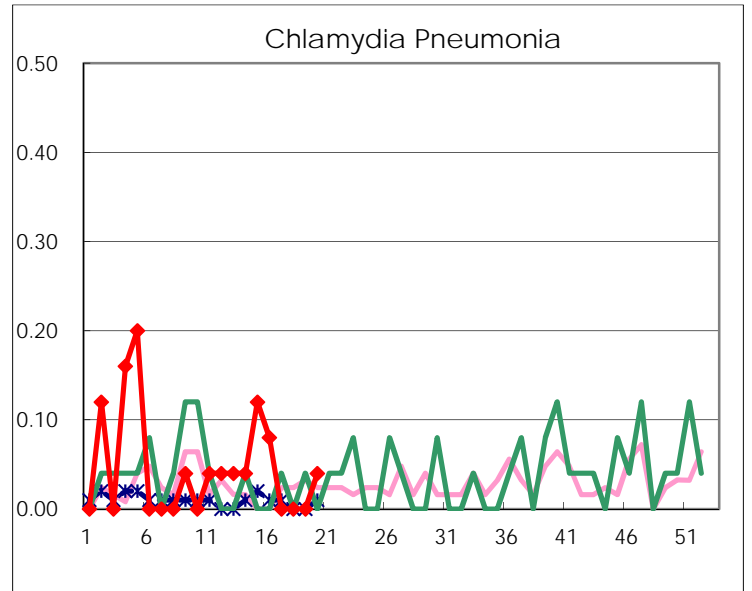
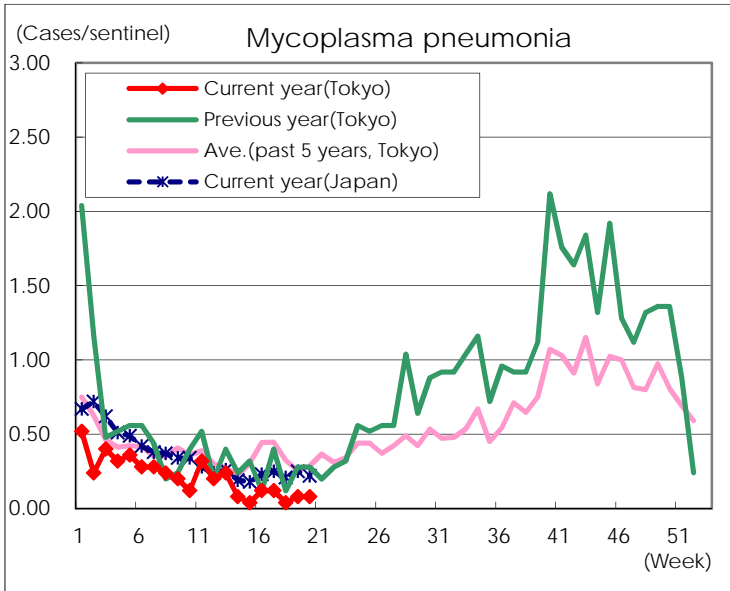
( Blank means 0. )

# Disease Trend Graph (weekly reported cases per sentinel in comparison)









Number of sentinel facilities for weekly reporting		
Types of sentinels	Number of sentinels	Sentinels having reported
Pediatric	264	261
Influenza	419	413
Ophthalmic	39	38
Specially-designated	25	25