

1 June 2017 / Number 21

Surveillance System in Tokyo, Japan

The infectious diseases which all physicians must report

All physicians must report to health centers the incidence of the diseases which are shown at page one. Health centers electronically report the individual cases to Tokyo Metropolitan Infectious Disease Surveillance Center.

The infectious diseases required to be reported by the sentinels

The numbers of patients who visit the sentinel clinics or hospitals during a week are reported to health centers in Tokyo. And they electronically report the numbers to Tokyo Metropolitan Infectious Disease Surveillance Center. We have about 500 sentinel clinics and hospitals in Tokyo.

Tokyo Metropolitan Institute of Public Health

TEL:81-3-3363-3213 FAX:81-3-5332-7365

e-mail:www@tokyo-eiken.go.jp

URL:idsc.tokyo-eiken.go.jp/

Number of patients with the diseases which all physicians must report

Category	Diseases	Tokyo					Japan	
		18th	19th	20th	21st	Cum 2017	21st	Cum 2017
I	Ebola hemorrhagic fever							
	Crimean-Congo hemorrhagic fever							
	Smallpox							
	South American hemorrhagic fever							
	Plague							
	Marburg disease							
II	Lassa fever							
	Acute poliomyelitis							
	Tuberculosis	40	60	81	51	1,312	344	8,576
	Diphtheria							
	Severe Acute Respiratory Syndrome(SARS)							
	Middle East Respiratory Syndrome (MERS)							
III	Avian influenza H5N1							
	Avian influenza H7N9							
	Cholera			1		1		1
	Shigellosis		1	2		17		57
	Enterohemorrhagic Escherichia coli infection	1	1	3	5	44	29	420
IV	Typhoid fever					2		14
	Paratyphoid fever					2		6
	Hepatitis E	1	3	1	1	28	2	150
	West Nile fever							
	Hepatitis A		1	1	2	39	4	124
	Echinococcosis							14
	Yellow fever							
	Psittacosis						1	6
	Omsk hemorrhagic fever							
	Relapsing fever							
	Kyasanur forest disease							
	Q fever							
	Rabies							
	Coccidioidomycosis							
	Monkeypox							
	Zika virus infection							1
	Severe Fever with Thrombocytopenia Syndrome						4	21
	Hemorrhagic fever with renal syndrome							
	Western equine encephalitis							
	Tick-borne encephalitis							
	Anthrax							
	Chikungunya fever					1		1
	Scrub typhus(Tsutsugamushi disease)					2	7	75
	Dengue fever		1			18	3	73
	Eastern equine encephalitis							
	Avian influenza (excluding H5N1 and H7N9)							
	Nipah virus infection							
	Japanese spotted fever						9	36
	Japanese encephalitis							
	Hantavirus pulmonary syndrome							
	Herpes B virus infection							
	Glanders							
Brucellosis							1	
Venezuelan equine encephalitis								
Hendra virus infection								
Epidemic typhus								
Botulism					1		1	
Malaria		1			5		13	
Tularemia								
Lyme disease							1	
Lyssavirus infection(excluding rabies)								
Rift valley fever								
Melioidosis								
Legionellosis	4	3	4	4	52	41	482	
Leptospirosis					1		2	
Rocky mountain spotted fever								

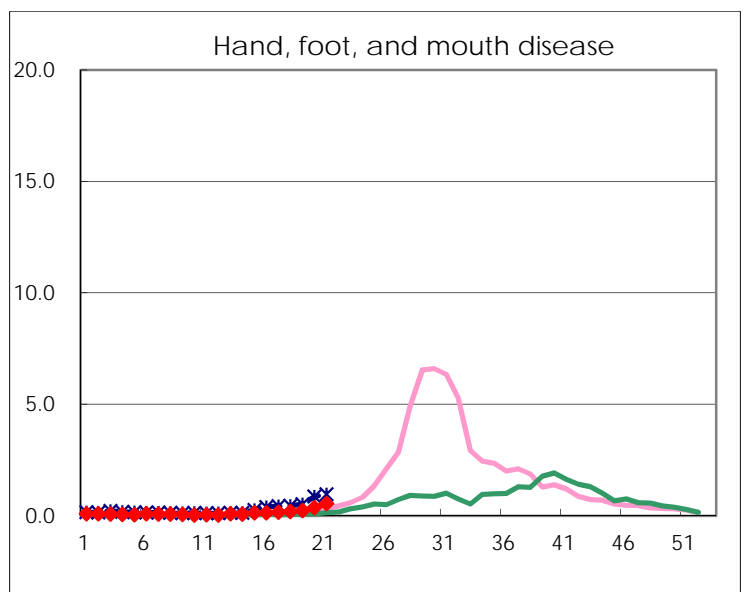
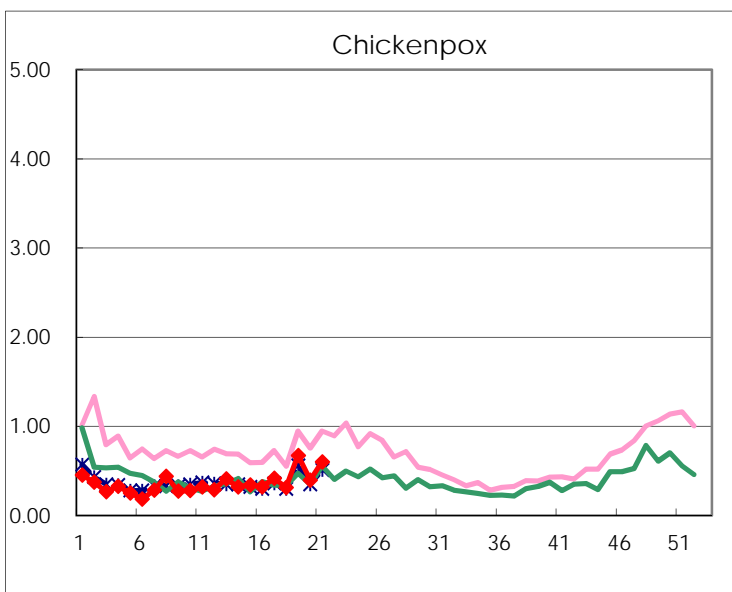
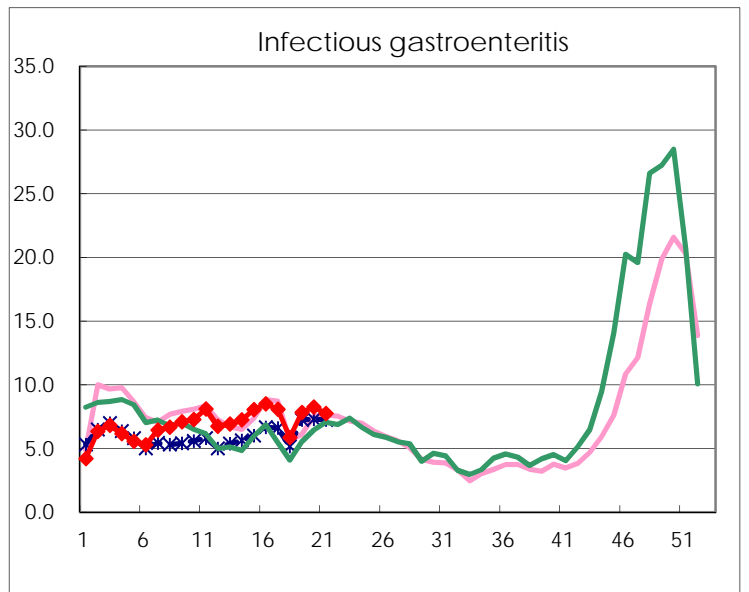
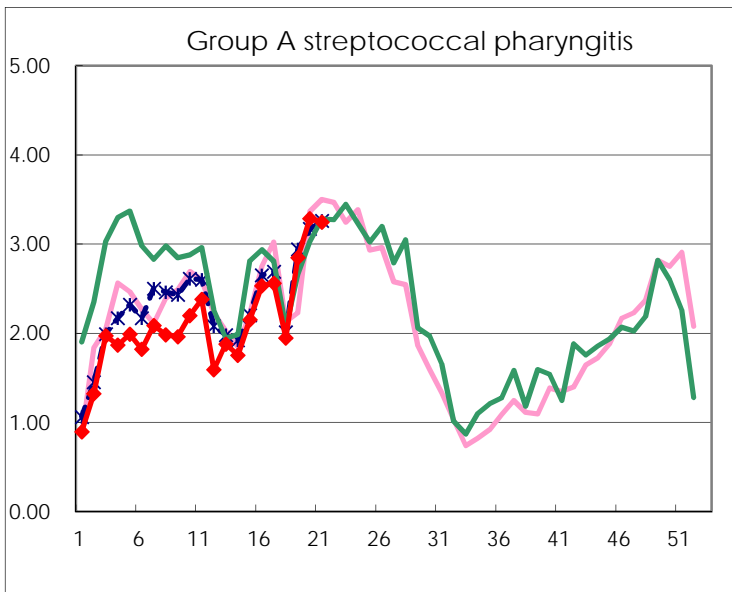
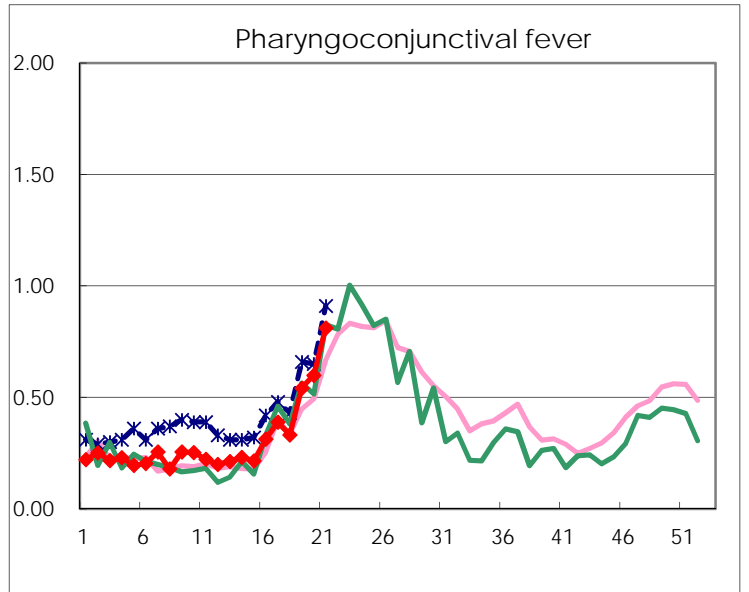
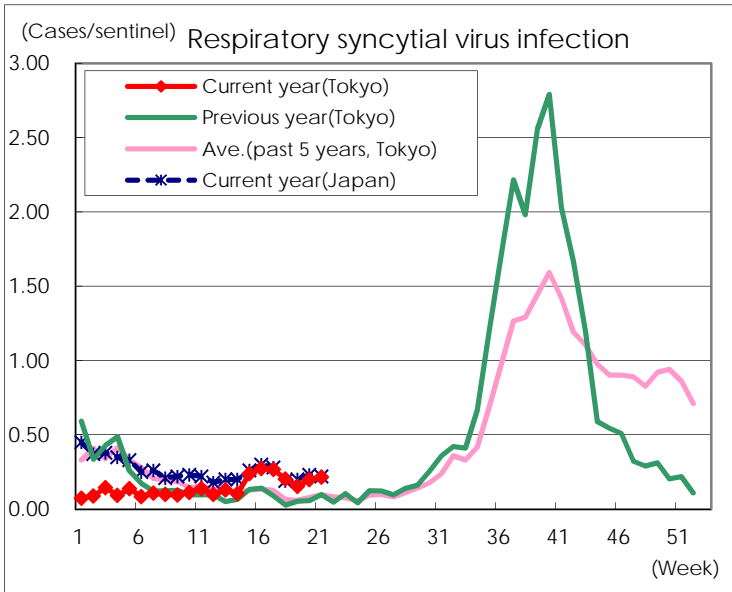
Category	Diseases	Tokyo					Japan	
		18th	19th	20th	21st	Cum 2017	21st	Cum 2017
V	Amebiasis		4	3	3	82	11	419
	Viral hepatitis(excluding hepatitis A and E)				2	23	7	123
	CRE infection	3	6	6		75	18	562
	Acute encephalitis(excluding JE and WNE)	2		1		29	8	306
	Cryptosporidiosis							3
	Creutzfeldt-Jakob disease					7	1	71
	Severe invasive streptococcal infections(TSLS)	1	1	3	2	34	11	244
	Acquired immunodeficiency syndrome (AIDS)	3	11	8	12	183	16	518
	Giardiasis			3		13	1	29
	Invasive <i>Haemophilus influenzae</i> disease	1	3	2	3	23	6	162
	Invasive meningococcal disease					1		12
	Invasive pneumococcal disease	11	16	17	8	224	44	1,647
	Varicella (limited to hospitalized case)	2	2		1	18	3	104
	Congenital rubella syndrome							
	Syphilis	18	53	49	37	651	77	1,961
	Disseminated cryptococcosis			1		8		56
	Tetanus					1	1	28
	Vancomycin-resistant <i>S. aureus</i> infection							
	Vancomycin-resistant Enterococcus infection					4		29
	Rubella	1		1	1	8	2	39
Measles					17	3	165	
MDRA infection					1		11	

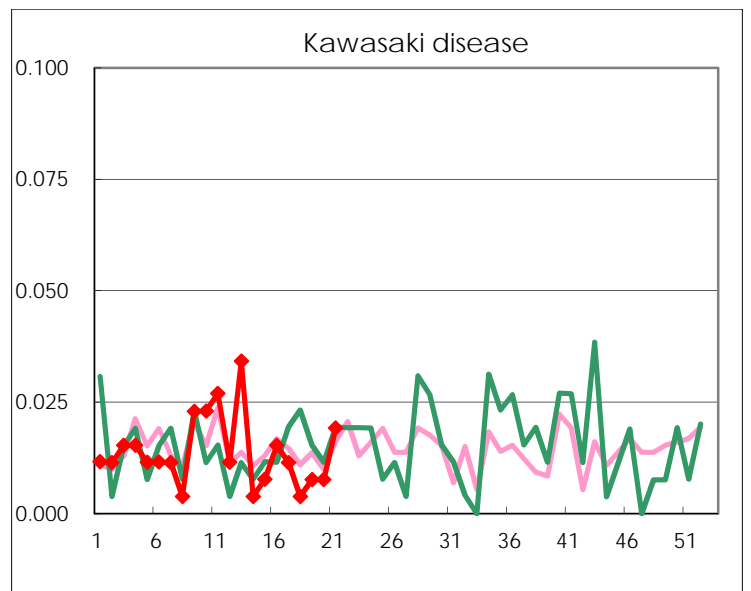
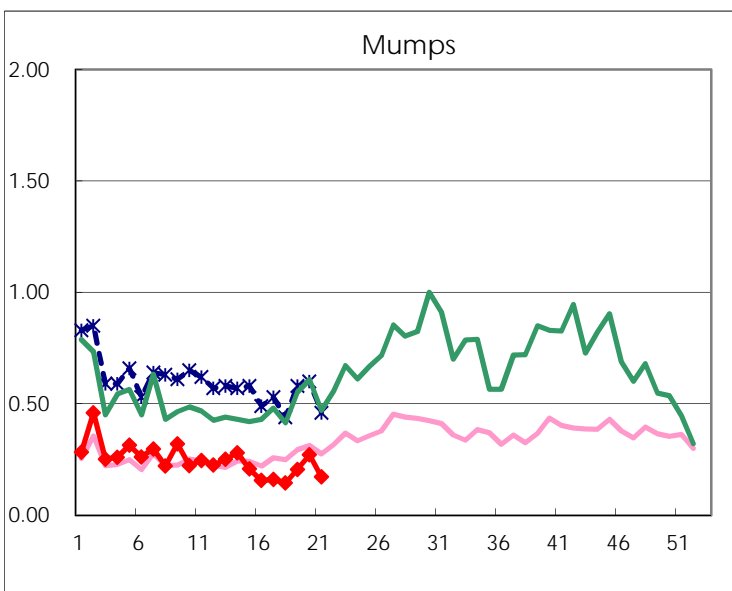
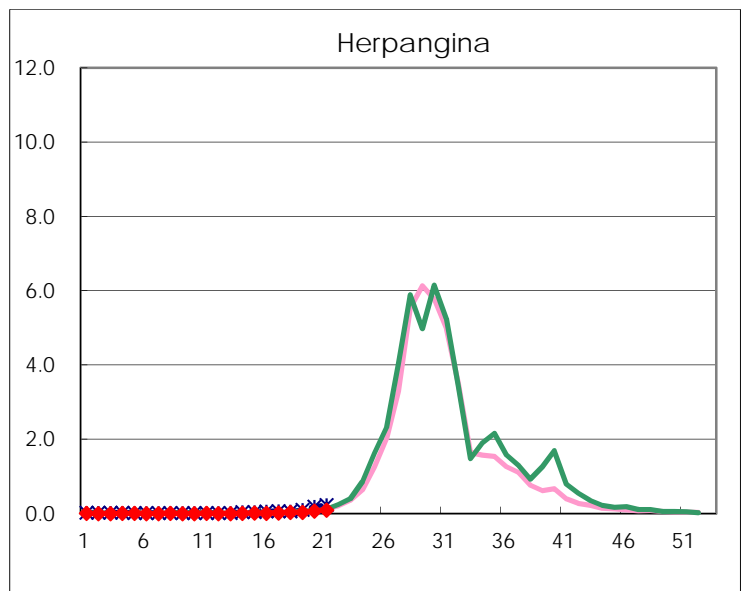
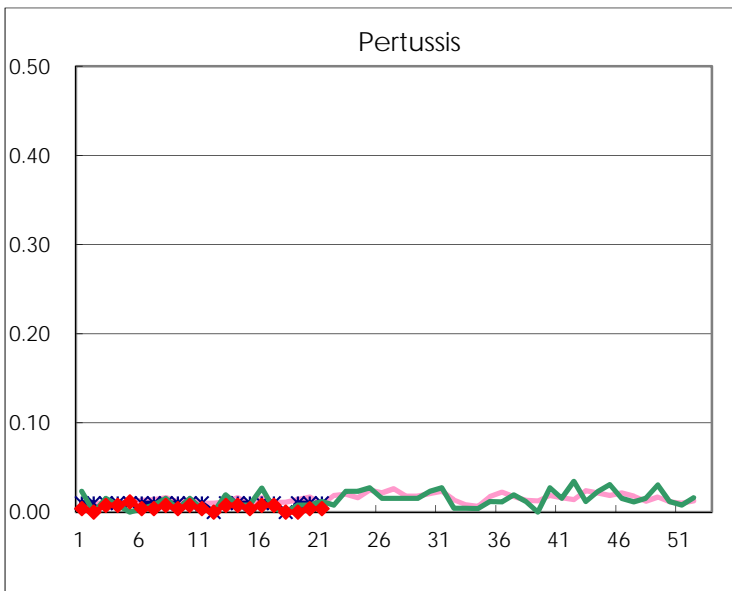
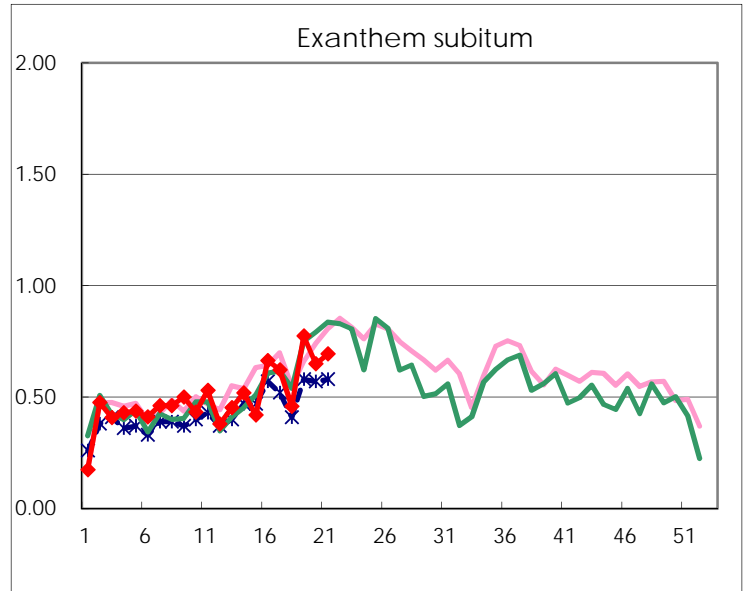
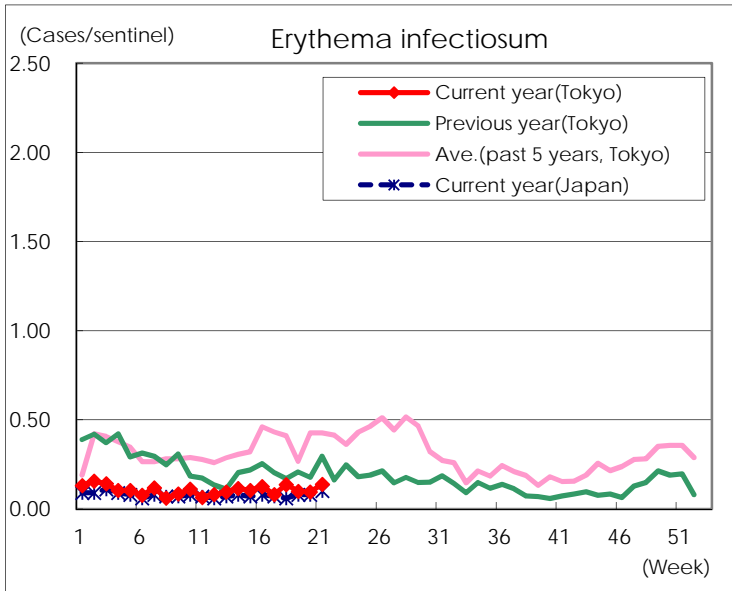
Number of patients with the diseases to be reported
by the designated clinics and hospitals

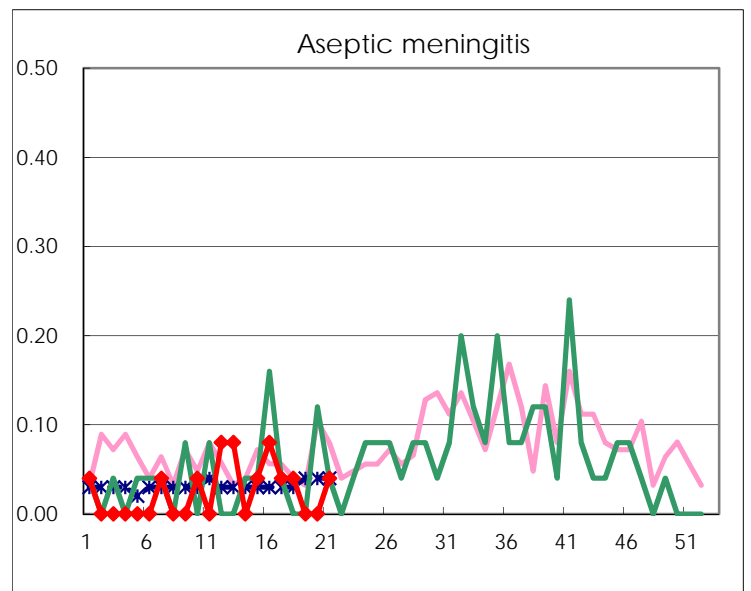
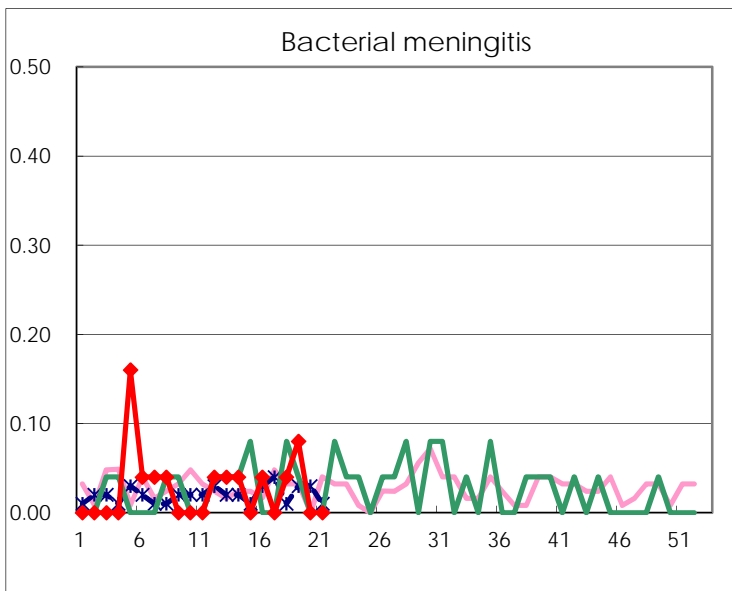
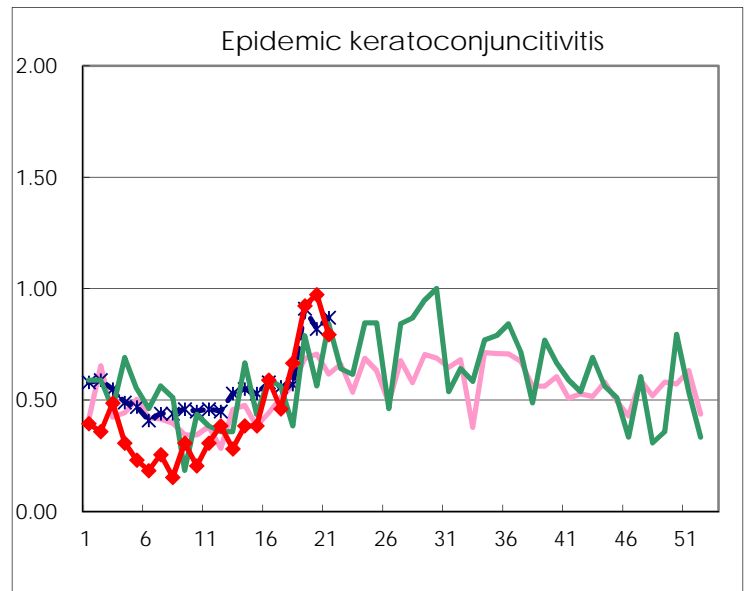
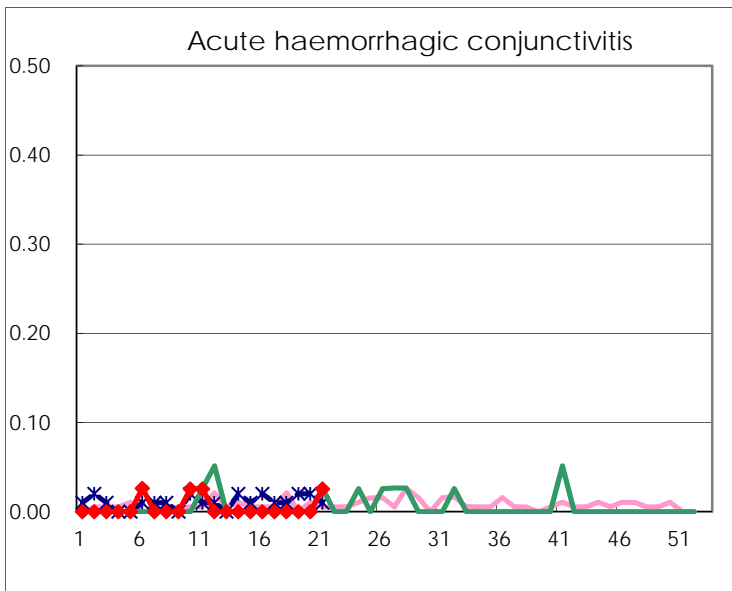
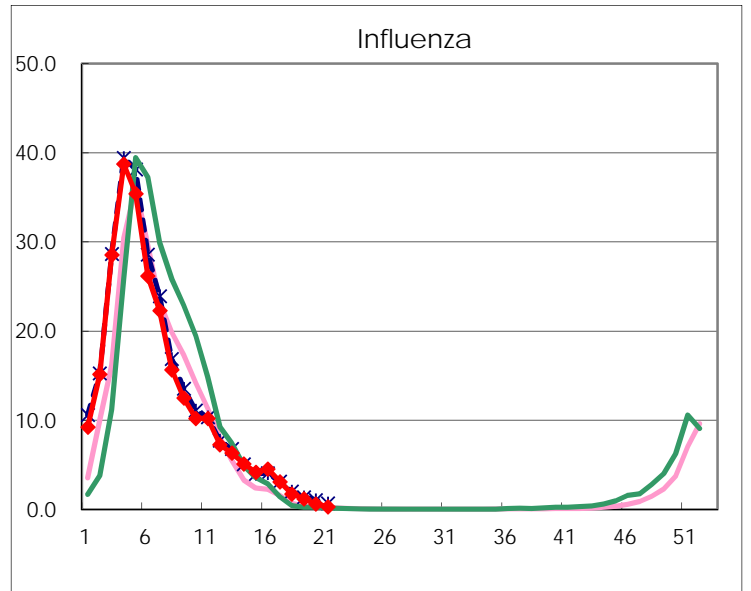
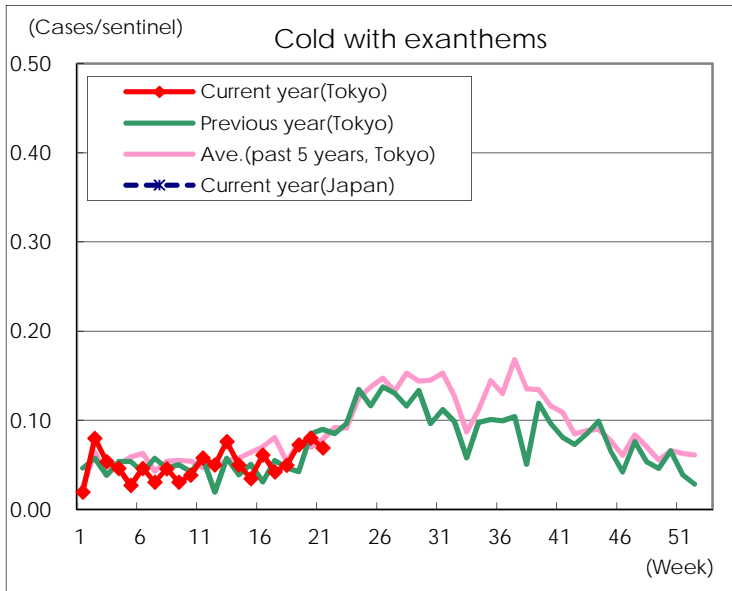
Diseases	Tokyo				
	18th	19th	20th	21st	/sentinel
Respiratory syncytial virus infection	53	40	52	56	0.21
Pharyngoconjunctival fever	87	142	157	212	0.81
Group A streptococcal pharyngitis	510	746	861	847	3.25
Infectious gastroenteritis	1,532	2,051	2,158	2,022	7.75
Chickenpox	82	176	104	157	0.60
Hand, foot, and mouth disease	48	61	96	143	0.55
Erythema infectiosum	36	26	25	36	0.14
Exanthem subitum	120	203	170	181	0.69
Pertussis			1	1	
Herpangina	10	10	19	26	0.10
Mumps	38	54	71	45	0.17
Kawasaki disease	1	2	2	5	0.02
Cold with exanthems	13	19	21	18	0.07
Influenza	724	496	251	123	0.30
Acute hemorrhagic conjunctivitis				1	0.03
Epidemic keratoconjunctivitis	26	36	38	31	0.79
Bacterial meningitis	1	2			
Aseptic meningitis	1			1	0.04
Mycoplasma pneumonia	1	2	2	2	0.08
Chlamydial pneumonia (excluding psittacosis)			1		
Infectious gastroenteritis (only by Rotavirus)	7	13	6	7	0.28
Influenza-Associated Hospitalizations	7	5		1	0.04

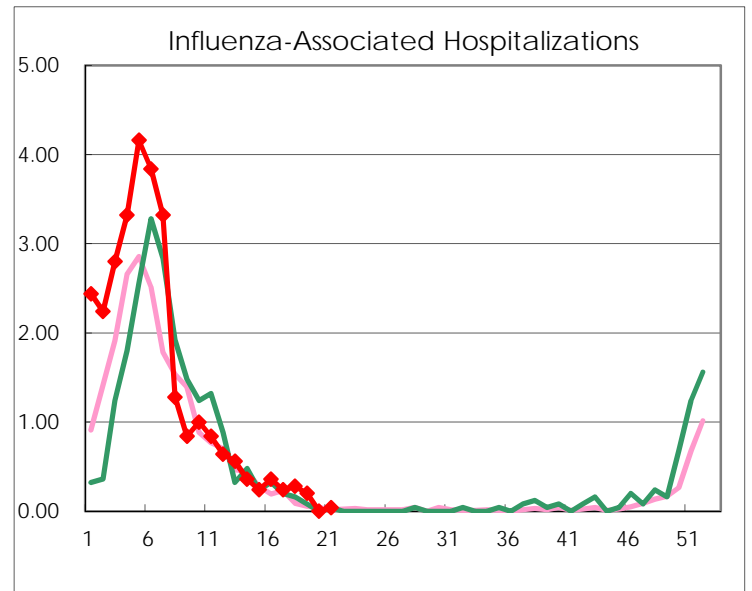
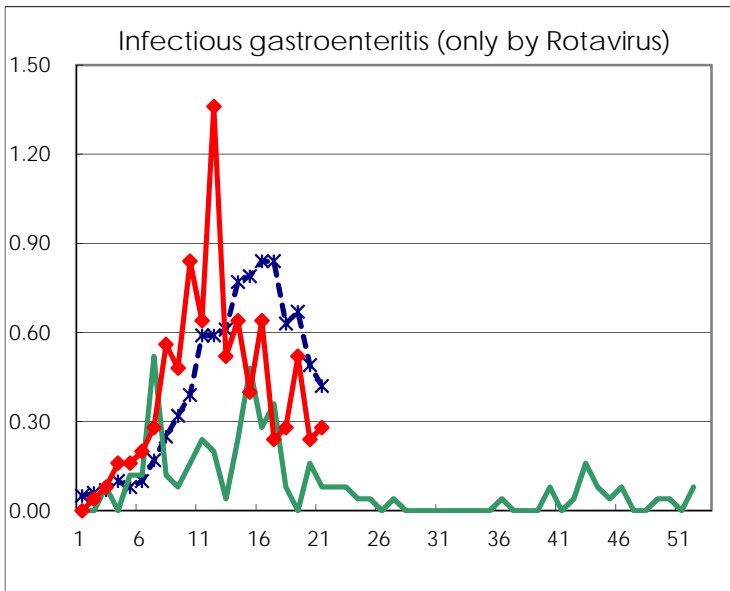
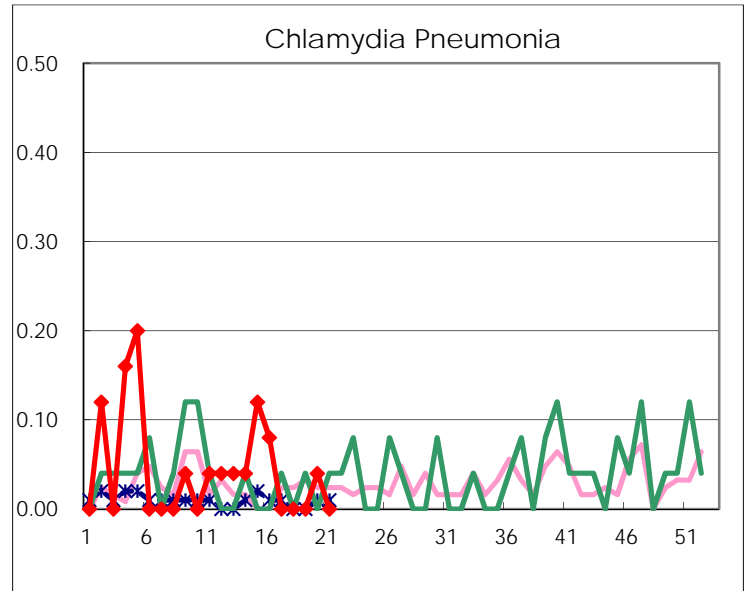
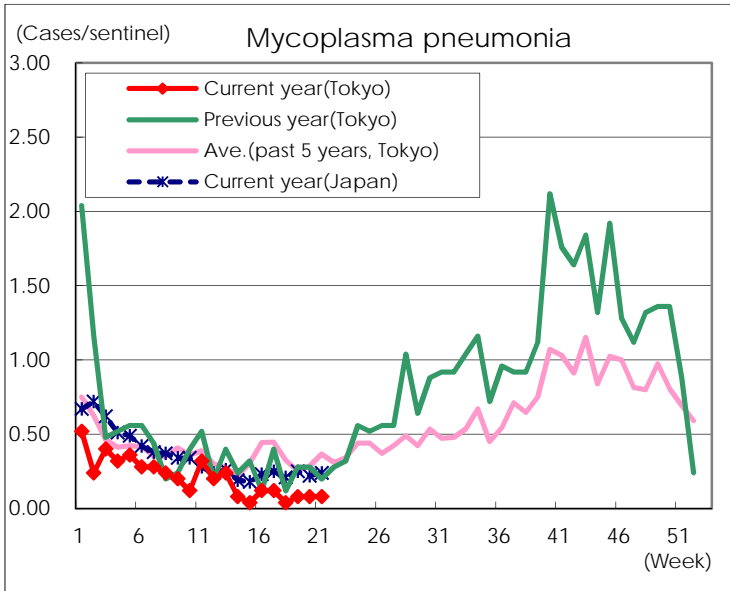
(Blank means 0.)

Disease Trend Graph (weekly reported cases per sentinel in comparison)









Number of sentinel facilities for weekly reporting		
Types of sentinels	Number of sentinels	Sentinels having reported
Pediatric	264	261
Influenza	419	411
Ophthalmic	39	39
Specially-designated	25	25