

8 June 2017 / Number 22

Surveillance System in Tokyo, Japan

The infectious diseases which all physicians must report

All physicians must report to health centers the incidence of the diseases which are shown at page one. Health centers electronically report the individual cases to Tokyo Metropolitan Infectious Disease Surveillance Center.

The infectious diseases required to be reported by the sentinels

The numbers of patients who visit the sentinel clinics or hospitals during a week are reported to health centers in Tokyo. And they electronically report the numbers to Tokyo Metropolitan Infectious Disease Surveillance Center. We have about 500 sentinel clinics and hospitals in Tokyo.

Tokyo Metropolitan Institute of Public Health

TEL:81-3-3363-3213 FAX:81-3-5332-7365

e-mail:www@tokyo-eiken.go.jp

URL:idsc.tokyo-eiken.go.jp/

Number of patients with the diseases which all physicians must report

Category	Diseases	Tokyo					Japan	
		19th	20th	21st	22nd	Cum 2017	22nd	Cum 2017
I	Ebola hemorrhagic fever							
	Crimean-Congo hemorrhagic fever							
	Smallpox							
	South American hemorrhagic fever							
	Plague							
	Marburg disease							
	Lassa fever							
II	Acute poliomyelitis							
	Tuberculosis	59	81	54	60	1,375	368	9,026
	Diphtheria							
	Severe Acute Respiratory Syndrome(SARS)							
	Middle East Respiratory Syndrome (MERS)							
	Avian influenza H5N1							
	Avian influenza H7N9							
III	Cholera		1			1		1
	Shigellosis	1	2		1	18	3	60
	Enterohemorrhagic Escherichia coli infection	1	3	5	2	46	45	474
	Typhoid fever					2		14
	Paratyphoid fever				1	3	1	7
IV	Hepatitis E	3	1	1	1	29	4	155
	West Nile fever							
	Hepatitis A	1	1	2	3	42	7	133
	Echinococcosis							14
	Yellow fever							
	Psittacosis							6
	Omsk hemorrhagic fever							
	Relapsing fever							
	Kyasanur forest disease							
	Q fever							
	Rabies							
	Coccidioidomycosis							
	Monkeypox							
	Zika virus infection							1
	Severe Fever with Thrombocytopenia Syndrome						4	25
	Hemorrhagic fever with renal syndrome							
	Western equine encephalitis							
	Tick-borne encephalitis							
	Anthrax							
	Chikungunya fever						1	1
	Scrub typhus(Tsutsugamushi disease)						2	3
	Dengue fever	1					18	2
	Eastern equine encephalitis							
	Avian influenza (excluding H5N1 and H7N9)							
	Nipah virus infection							
	Japanese spotted fever						17	54
	Japanese encephalitis							
	Hantavirus pulmonary syndrome							
	Herpes B virus infection							
	Glanders							
	Brucellosis							1
	Venezuelan equine encephalitis							
	Hendra virus infection							
Epidemic typhus								
Botulism						1	1	
Malaria	1					5	13	
Tularemia								
Lyme disease							1	
Lyssavirus infection(excluding rabies)								
Rift valley fever								
Melioidosis								
Legionellosis	3	4	4	2	54	17	502	
Leptospirosis						1	2	
Rocky mountain spotted fever								

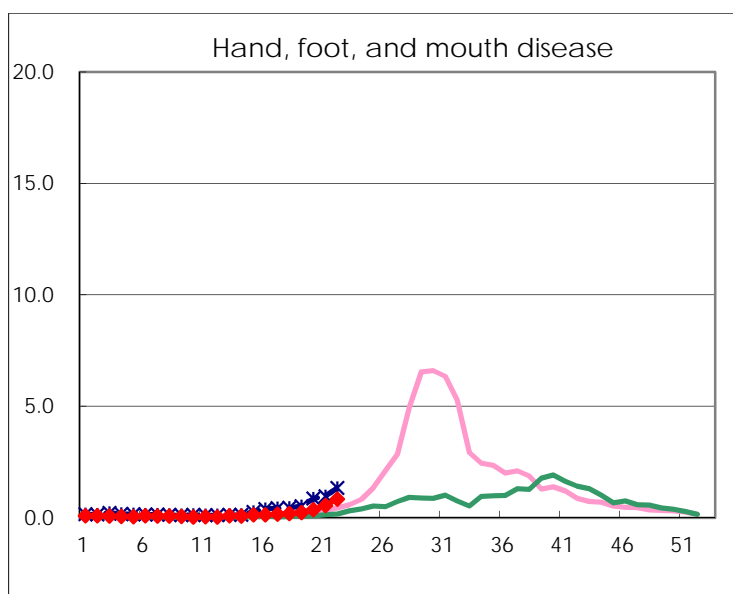
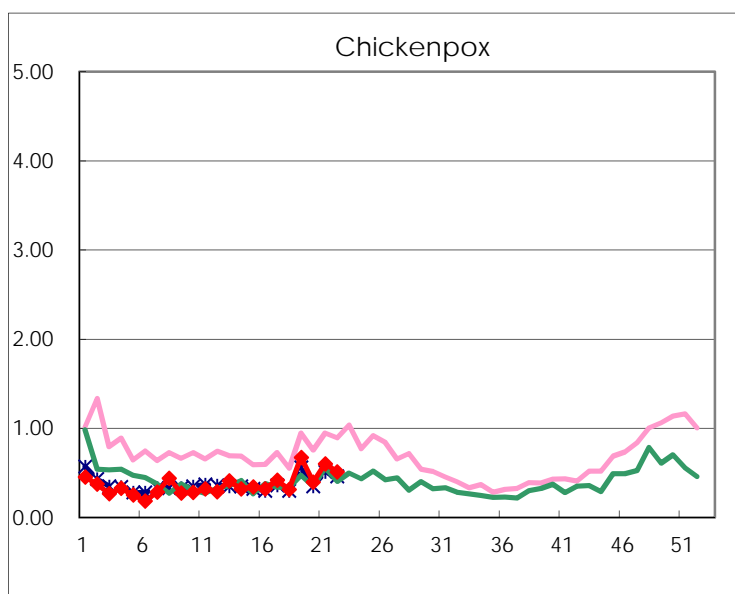
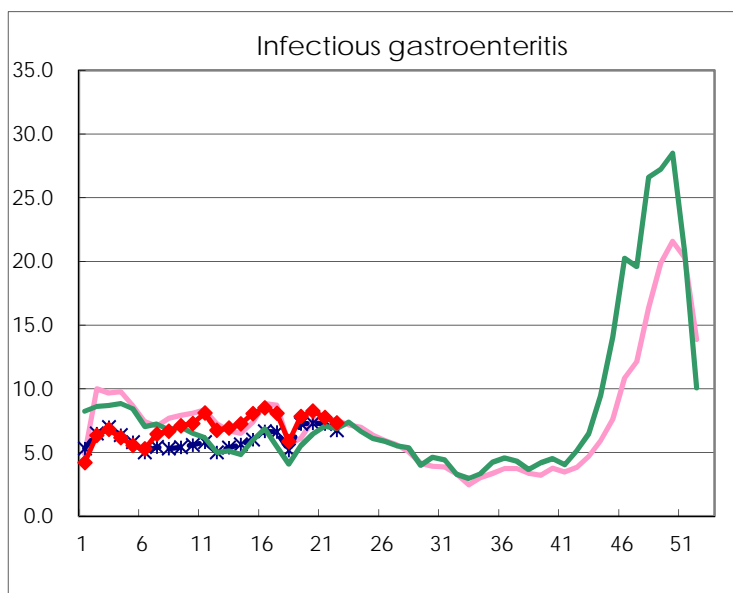
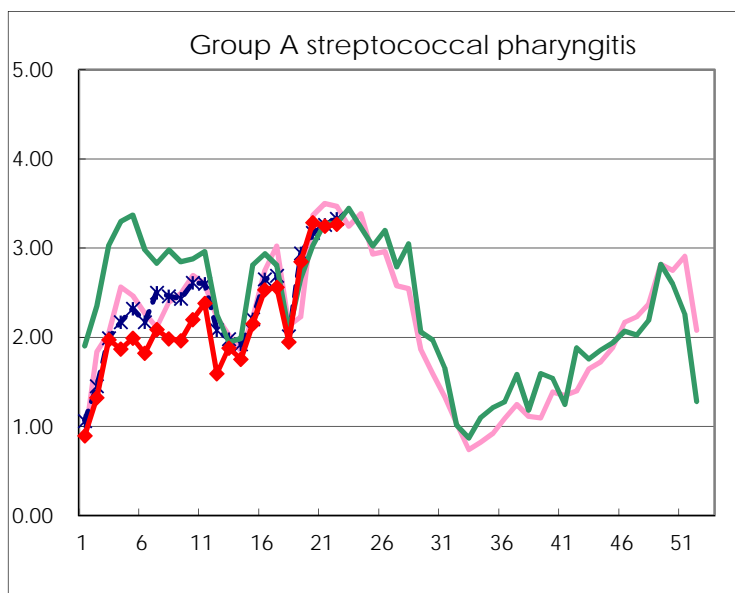
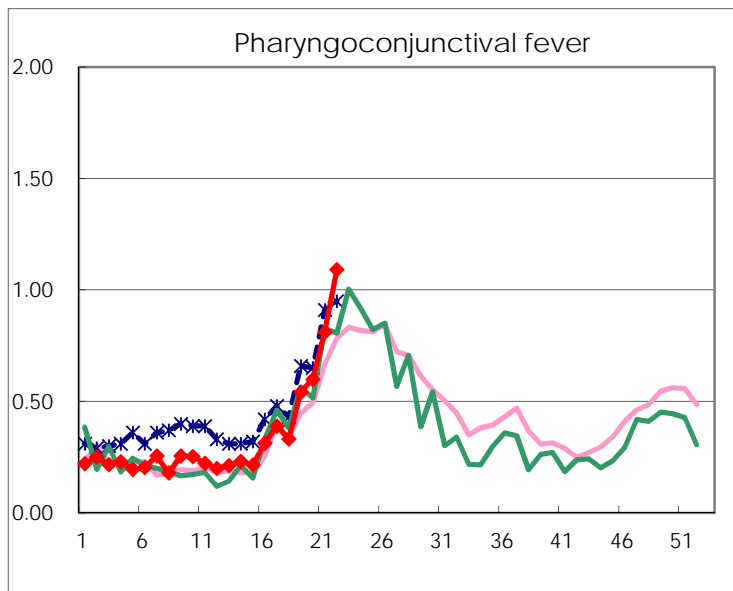
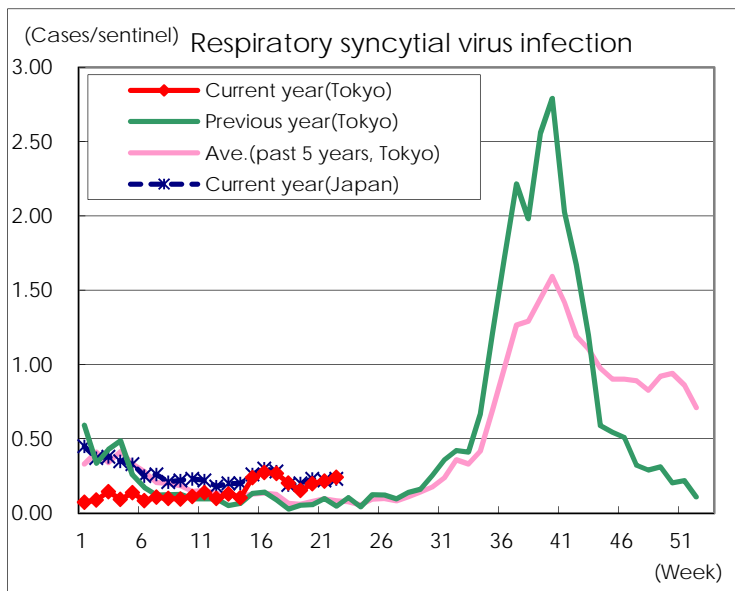
Category	Diseases	Tokyo					Japan	
		19th	20th	21st	22nd	Cum 2017	22nd	Cum 2017
V	Amebiasis	4	3	3	5	87	16	452
	Viral hepatitis(excluding hepatitis A and E)			2	1	24		125
	CRE infection	6	6		4	79	12	591
	Acute encephalitis(excluding JE and WNE)		1		1	30	8	316
	Cryptosporidiosis						2	5
	Creutzfeldt-Jakob disease					7	1	73
	Severe invasive streptococcal infections(TSLS)	1	3	2	4	38	7	258
	Acquired immunodeficiency syndrome (AIDS)	11	8	12	3	186	16	548
	Giardiasis		3			13		29
	Invasive <i>Haemophilus influenzae</i> disease	3	2	3		23	2	170
	Invasive meningococcal disease					1		12
	Invasive pneumococcal disease	16	17	8	7	231	46	1,730
	Varicella (limited to hospitalized case)	2		1	2	20	13	120
	Congenital rubella syndrome							
	Syphilis	53	49	37	43	694	89	2,096
	Disseminated cryptococcosis		1		1	9	2	60
	Tetanus				1	2		29
	Vancomycin-resistant <i>S. aureus</i> infection							
	Vancomycin-resistant Enterococcus infection					4	2	32
	Rubella		1	1		8	4	44
Measles					17	2	164	
MDRA infection					1		11	

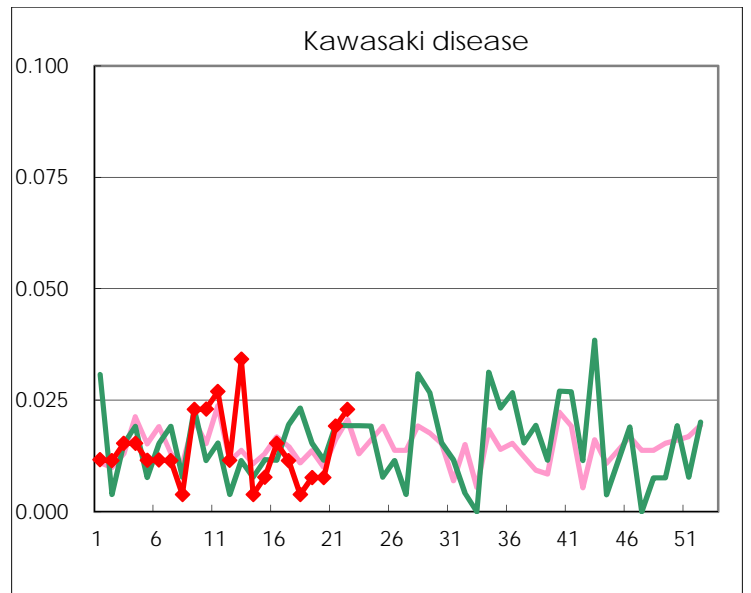
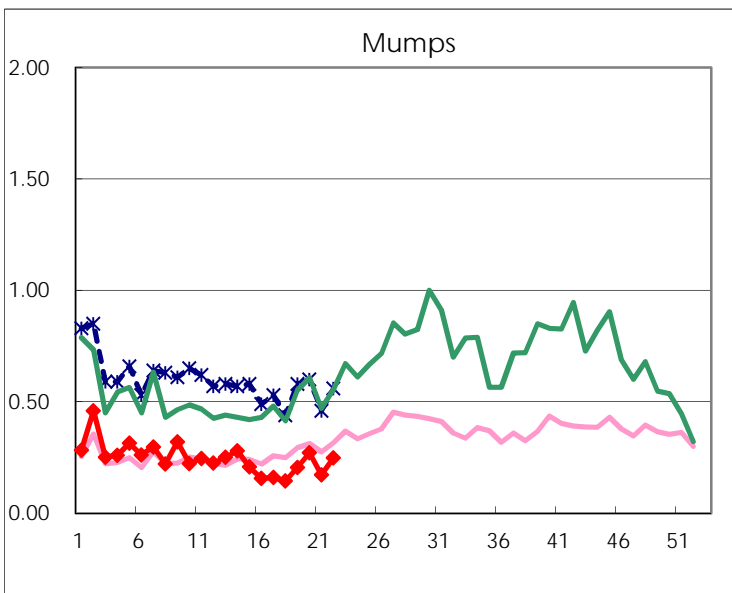
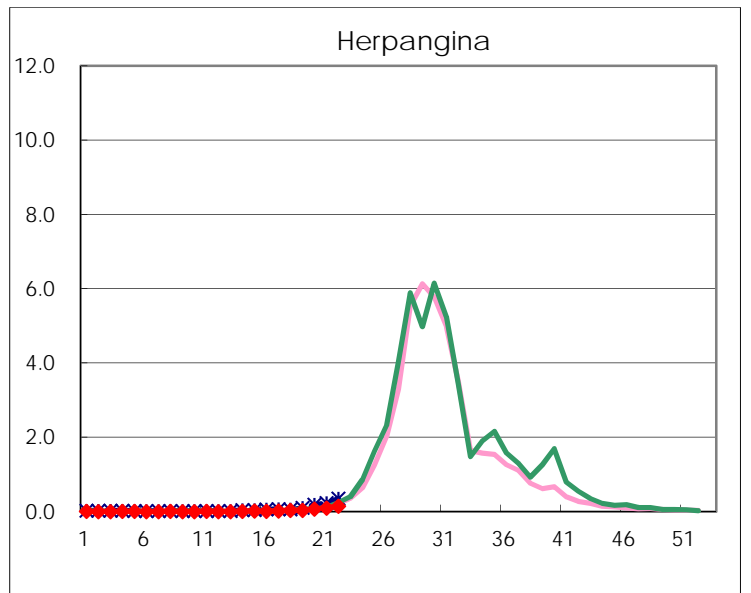
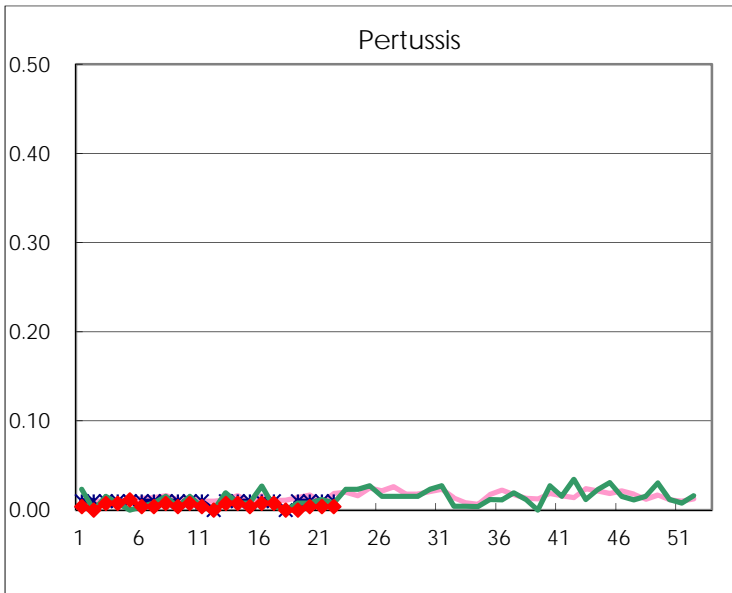
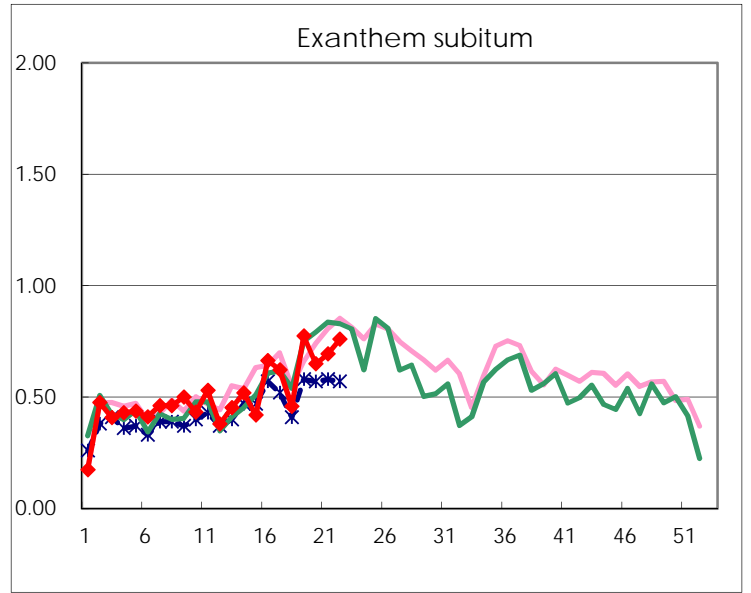
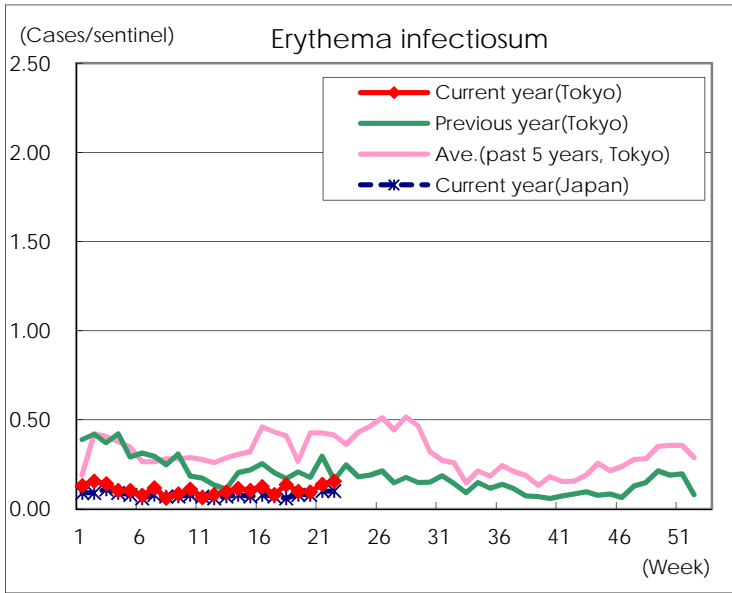
Number of patients with the diseases to be reported
by the designated clinics and hospitals

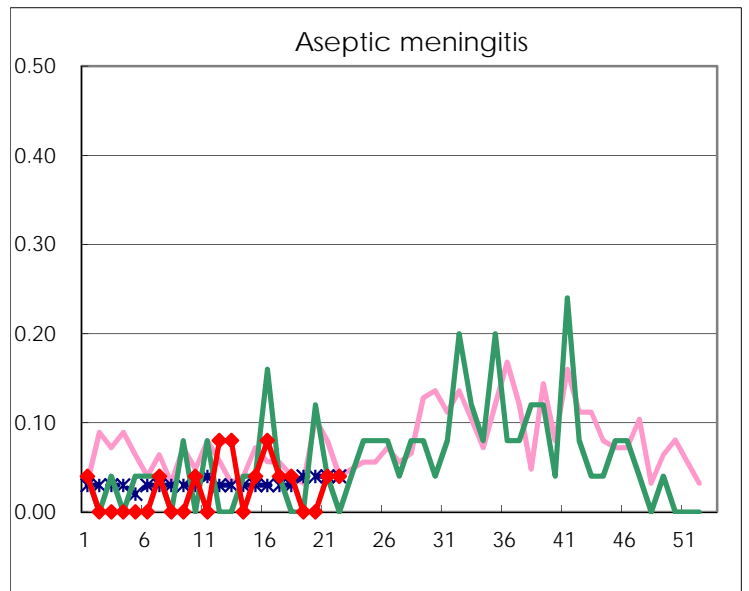
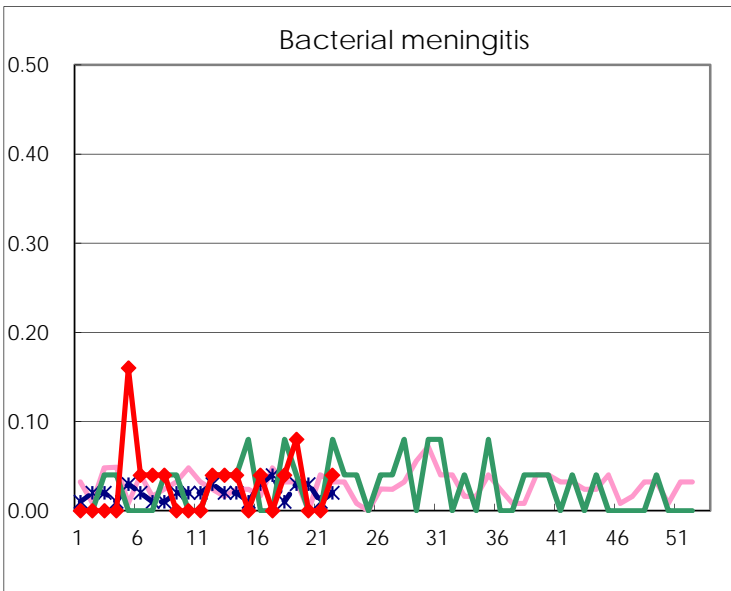
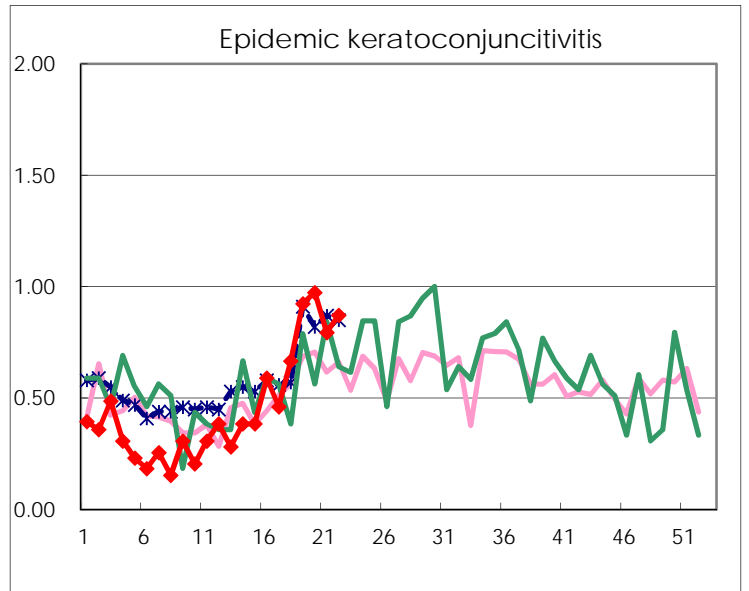
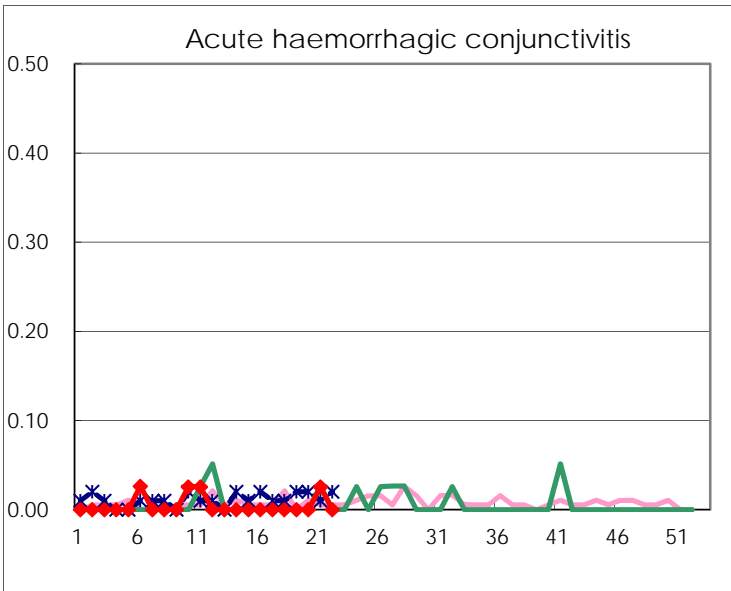
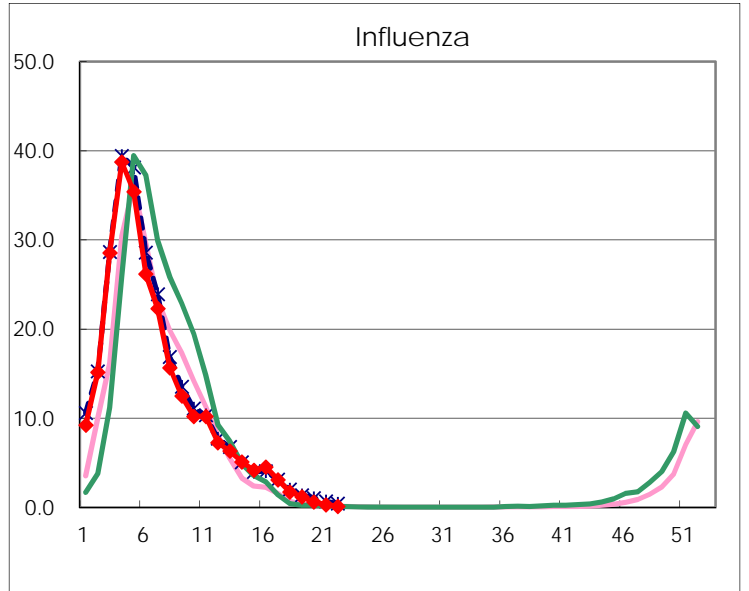
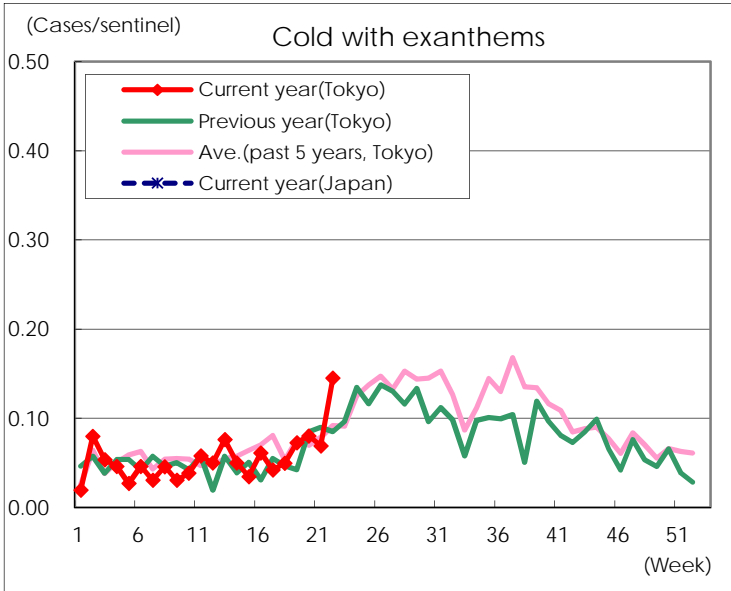
Diseases	Tokyo				
	19th	20th	21st	22nd	/sentinel
Respiratory syncytial virus infection	40	52	56	63	0.24
Pharyngoconjunctival fever	142	157	212	286	1.09
Group A streptococcal pharyngitis	746	861	847	856	3.27
Infectious gastroenteritis	2,051	2,158	2,022	1,918	7.32
Chickenpox	176	104	157	134	0.51
Hand, foot, and mouth disease	61	96	143	220	0.84
Erythema infectiosum	26	25	36	41	0.16
Exanthem subitum	203	170	181	199	0.76
Pertussis		1	1	1	
Herpangina	10	19	26	39	0.15
Mumps	54	71	45	65	0.25
Kawasaki disease	2	2	5	6	0.02
Cold with exanthems	19	21	18	38	0.15
Influenza	496	251	123	48	0.12
Acute hemorrhagic conjunctivitis			1		
Epidemic keratoconjunctivitis	36	38	31	34	0.87
Bacterial meningitis	2			1	0.04
Aseptic meningitis			1	1	0.04
Mycoplasma pneumonia	2	2	2	3	0.12
Chlamydial pneumonia (excluding psittacosis)		1		1	0.04
Infectious gastroenteritis (only by Rotavirus)	13	6	7	3	0.12
Influenza-Associated Hospitalizations	5		1		

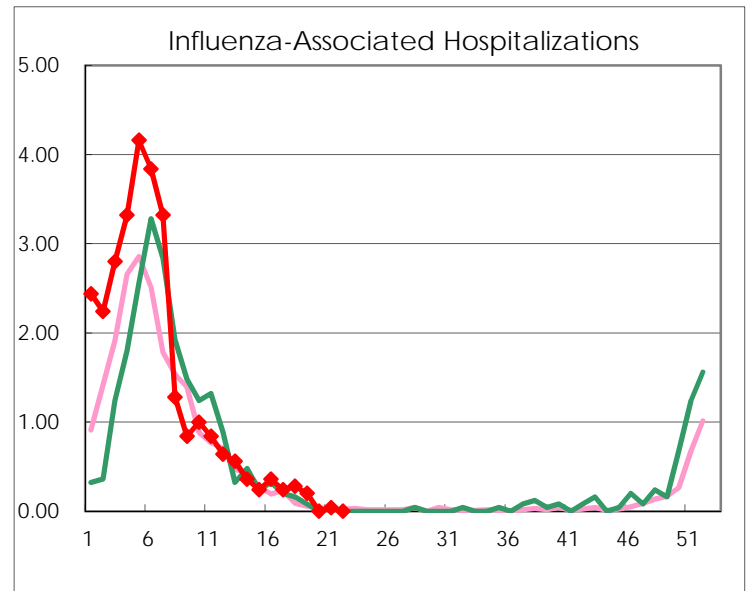
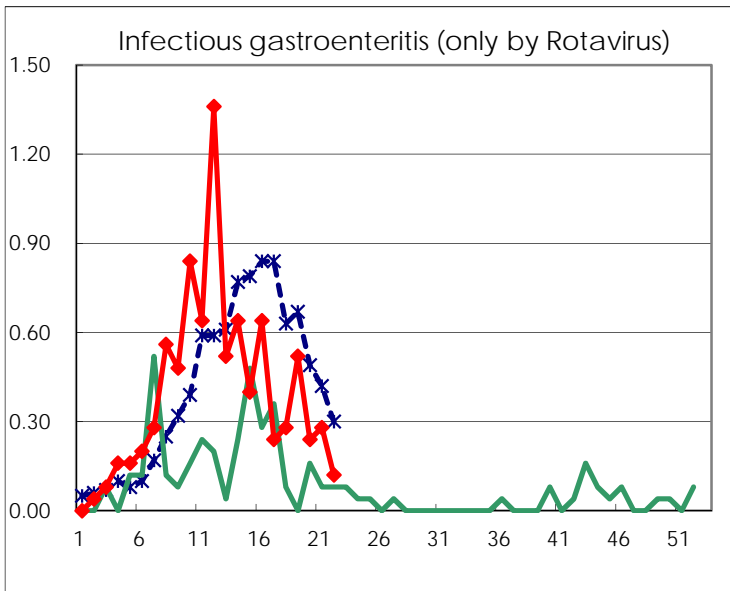
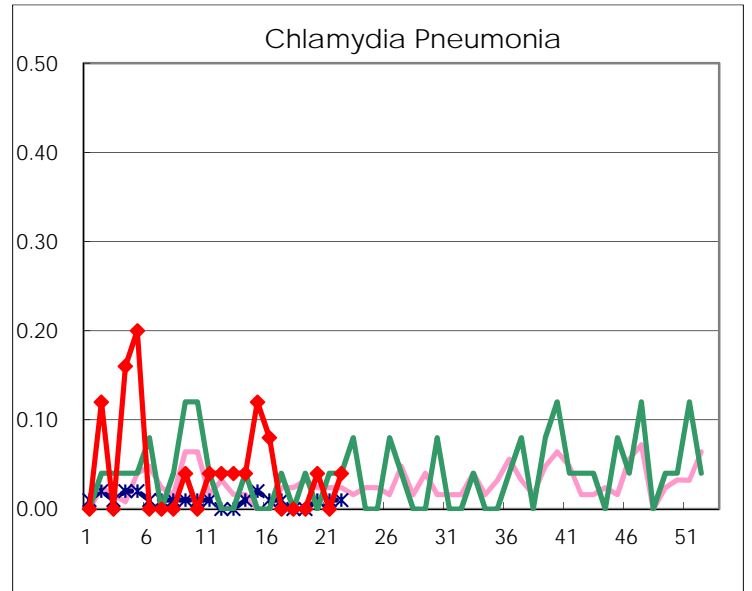
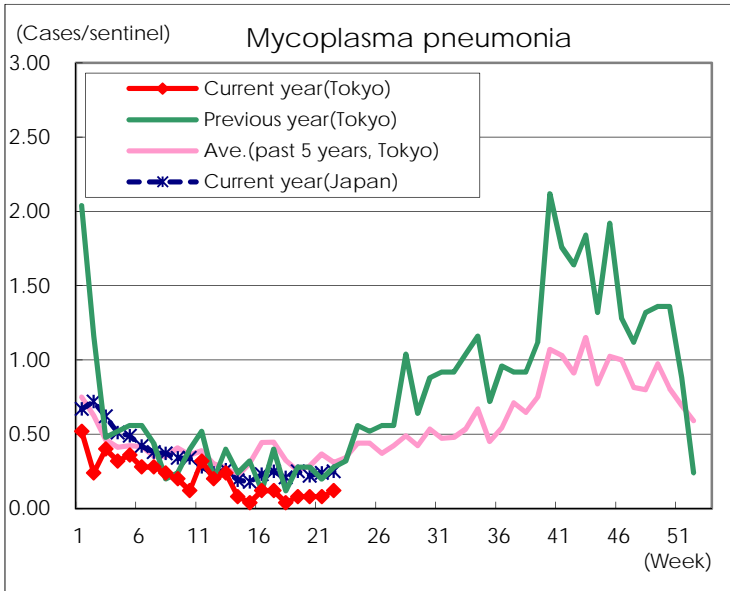
(Blank means 0.)

Disease Trend Graph (weekly reported cases per sentinel in comparison)









Number of sentinel facilities for weekly reporting		
Types of sentinels	Number of sentinels	Sentinels having reported
Pediatric	264	262
Influenza	419	414
Ophthalmic	39	39
Specially-designated	25	25