

22 June 2017 / Number 24

Surveillance System in Tokyo, Japan

The infectious diseases which all physicians must report

All physicians must report to health centers the incidence of the diseases which are shown at page one. Health centers electronically report the individual cases to Tokyo Metropolitan Infectious Disease Surveillance Center.

The infectious diseases required to be reported by the sentinels

The numbers of patients who visit the sentinel clinics or hospitals during a week are reported to health centers in Tokyo. And they electronically report the numbers to Tokyo Metropolitan Infectious Disease Surveillance Center. We have about 500 sentinel clinics and hospitals in Tokyo.

Tokyo Metropolitan Institute of Public Health

TEL:81-3-3363-3213 FAX:81-3-5332-7365

e-mail:www@tokyo-eiken.go.jp

URL:idsc.tokyo-eiken.go.jp/

Number of patients with the diseases which all physicians must report

Category	Diseases	Tokyo					Japan	
		21st	22nd	23rd	24th	Cum 2017	24th	Cum 2017
I	Ebola hemorrhagic fever							
	Crimean-Congo hemorrhagic fever							
	Smallpox							
	South American hemorrhagic fever							
	Plague							
	Marburg disease							
II	Lassa fever							
	Acute poliomyelitis							
	Tuberculosis	58	66	71	57	1,521	336	9,980
	Diphtheria							
	Severe Acute Respiratory Syndrome(SARS)							
	Middle East Respiratory Syndrome (MERS)							
III	Avian influenza H5N1							
	Avian influenza H7N9							
	Cholera					1		1
	Shigellosis		1		1	19	3	68
	Enterohemorrhagic Escherichia coli infection	5	2	2	5	54	73	608
IV	Typhoid fever					2		15
	Paratyphoid fever		1			3		7
	Hepatitis E	1	1	1	2	32	4	165
	West Nile fever							
	Hepatitis A	2	3		2	44	9	145
	Echinococcosis							14
	Yellow fever							
	Psittacosis						2	8
	Omsk hemorrhagic fever							
	Relapsing fever							
	Kyasanur forest disease							
	Q fever							
	Rabies							
	Coccidioidomycosis							
	Monkeypox							
	Zika virus infection							1
	Severe Fever with Thrombocytopenia Syndrome						3	33
	Hemorrhagic fever with renal syndrome							
	Western equine encephalitis							
	Tick-borne encephalitis							
	Anthrax							
	Chikungunya fever					1		1
	Scrub typhus(Tsutsugamushi disease)					2	3	87
	Dengue fever				1	19	3	81
	Eastern equine encephalitis							
	Avian influenza (excluding H5N1 and H7N9)							
	Nipah virus infection							
	Japanese spotted fever						4	70
	Japanese encephalitis							
	Hantavirus pulmonary syndrome							
	Herpes B virus infection							
	Glanders							
Brucellosis							1	
Venezuelan equine encephalitis								
Hendra virus infection								
Epidemic typhus								
Botulism					1		1	
Malaria				1	6	2	15	
Tularemia								
Lyme disease							1	
Lyssavirus infection(excluding rabies)								
Rift valley fever								
Melioidosis								
Legionellosis	4	2	1		55	30	568	
Leptospirosis					1		2	
Rocky mountain spotted fever								

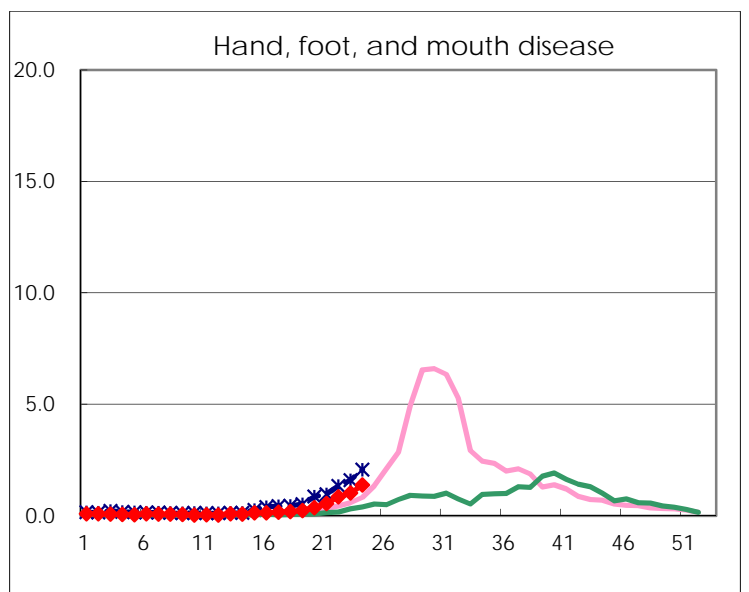
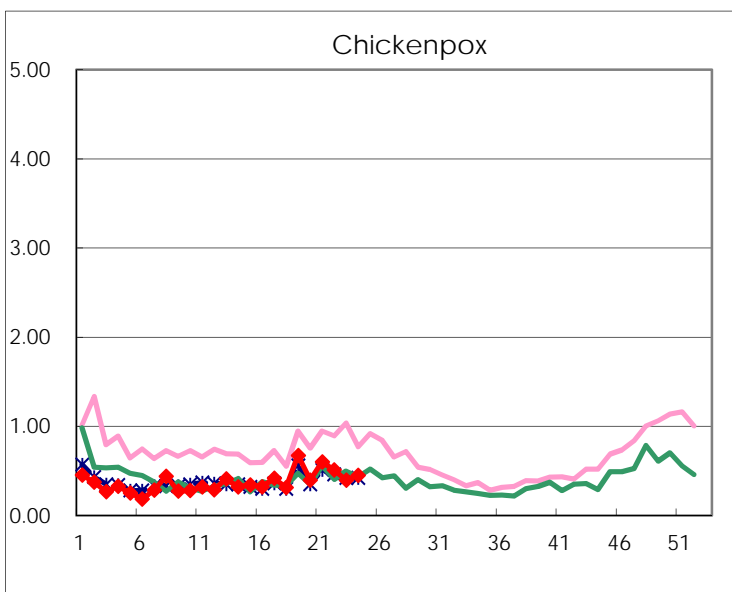
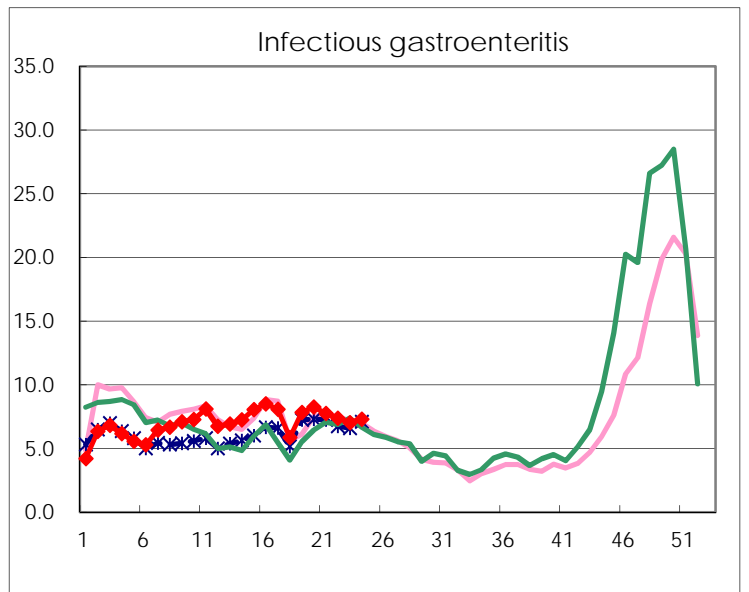
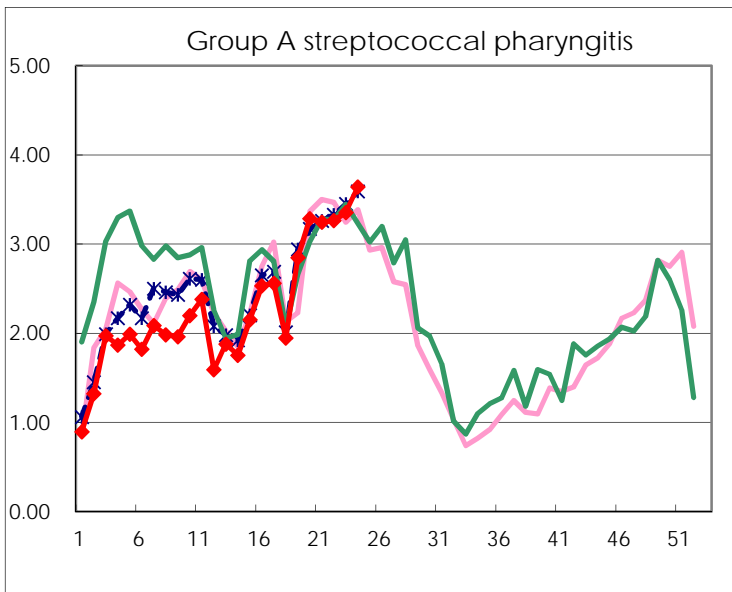
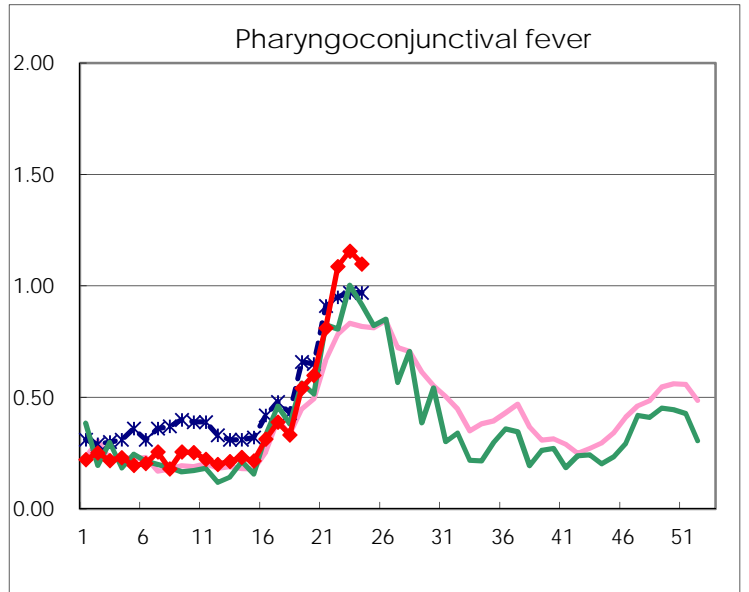
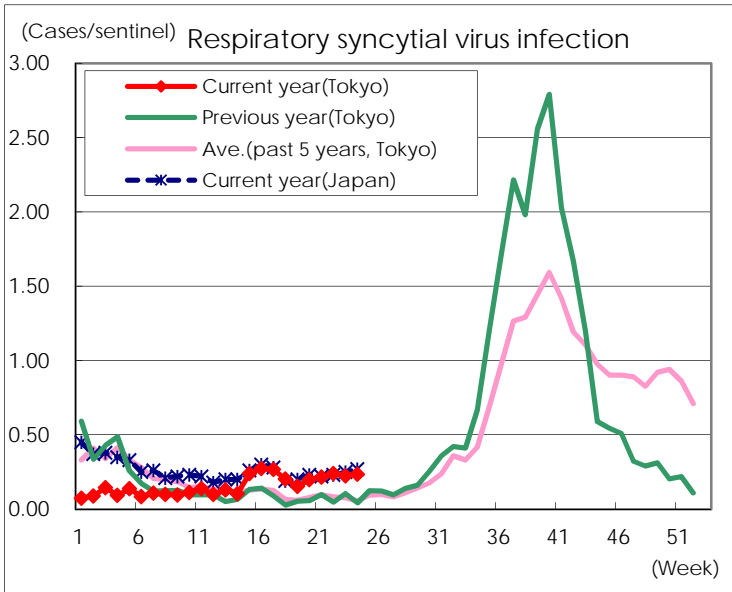
Category	Diseases	Tokyo					Japan	
		21st	22nd	23rd	24th	Cum 2017	24th	Cum 2017
V	Amebiasis	3	5	3	9	99	12	500
	Viral hepatitis(excluding hepatitis A and E)	2	1	1	1	26	3	136
	CRE infection		4	3	7	89	17	655
	Acute encephalitis(excluding JE and WNE)		1			30	8	335
	Cryptosporidiosis						2	7
	Creutzfeldt-Jakob disease					7	4	85
	Severe invasive streptococcal infections(TSLS)	2	5	2	2	43	12	288
	Acquired immunodeficiency syndrome (AIDS)	12	7	8	5	203	18	620
	Giardiasis			1		14		31
	Invasive <i>Haemophilus influenzae</i> disease	3			1	24	3	184
	Invasive meningococcal disease					1		11
	Invasive pneumococcal disease	8	7	8	11	250	32	1,858
	Varicella (limited to hospitalized case)	1	2		1	22	6	135
	Congenital rubella syndrome							
	Syphilis	37	44	35	33	763	79	2,339
	Disseminated cryptococcosis		1		1	10	2	67
	Tetanus		1			2	3	36
	Vancomycin-resistant <i>S. aureus</i> infection							
	Vancomycin-resistant Enterococcus infection			1		5	2	37
	Rubella	1		1	2	11	2	46
Measles					17	1	163	
MDRA infection					1		11	

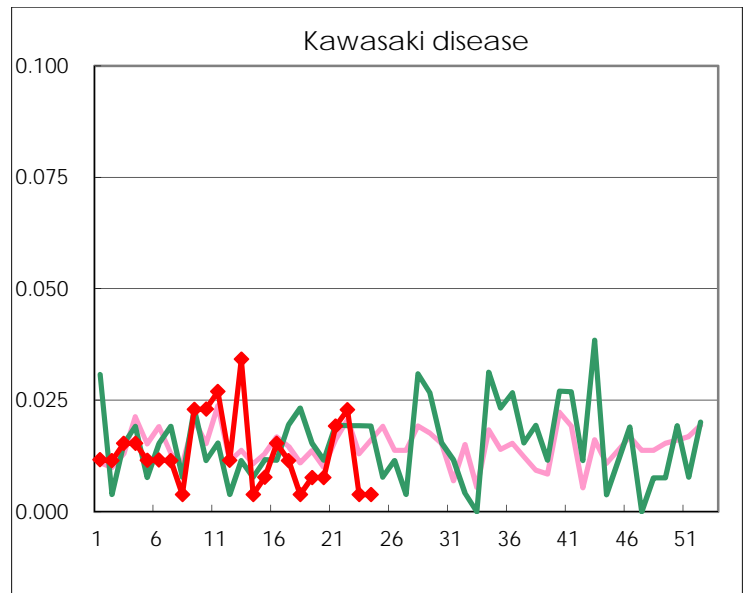
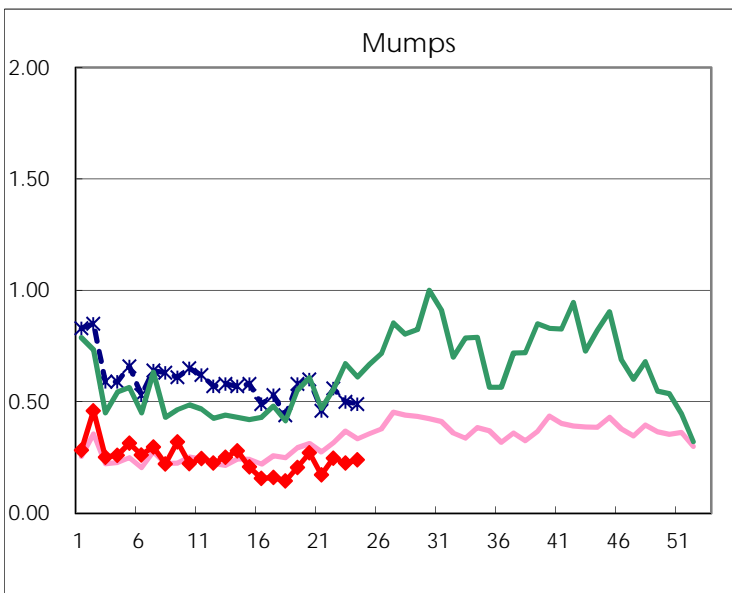
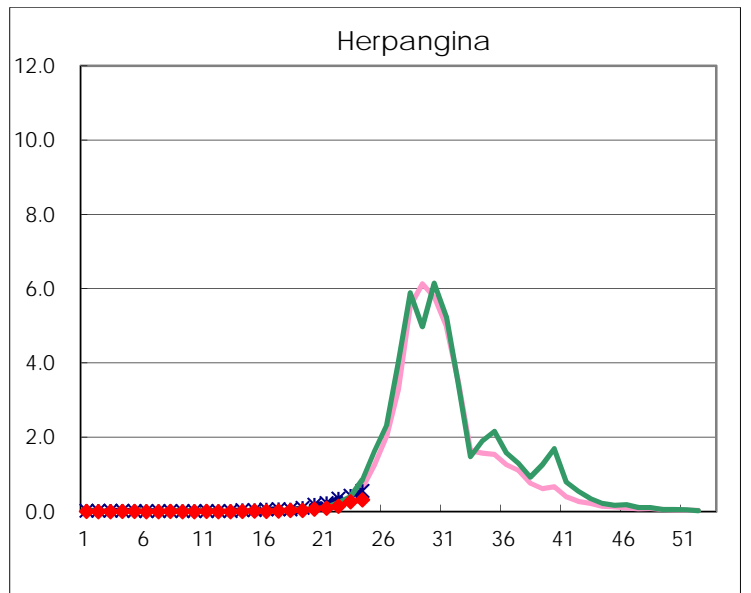
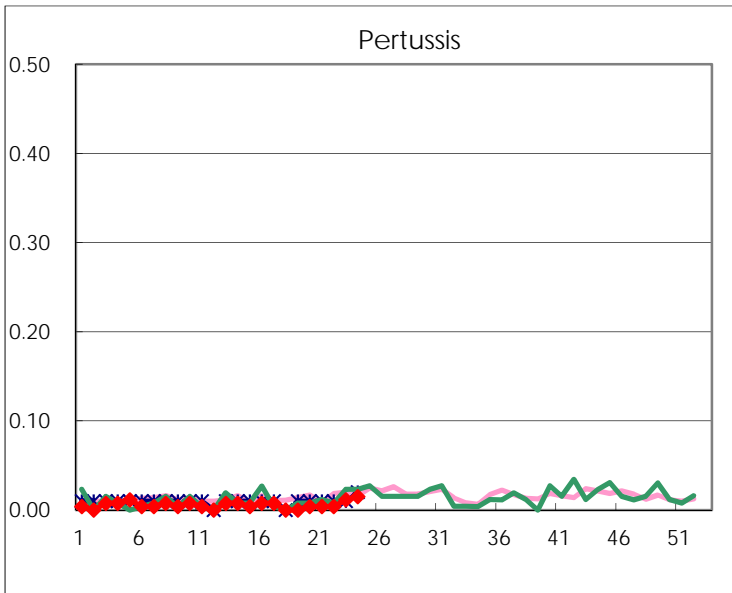
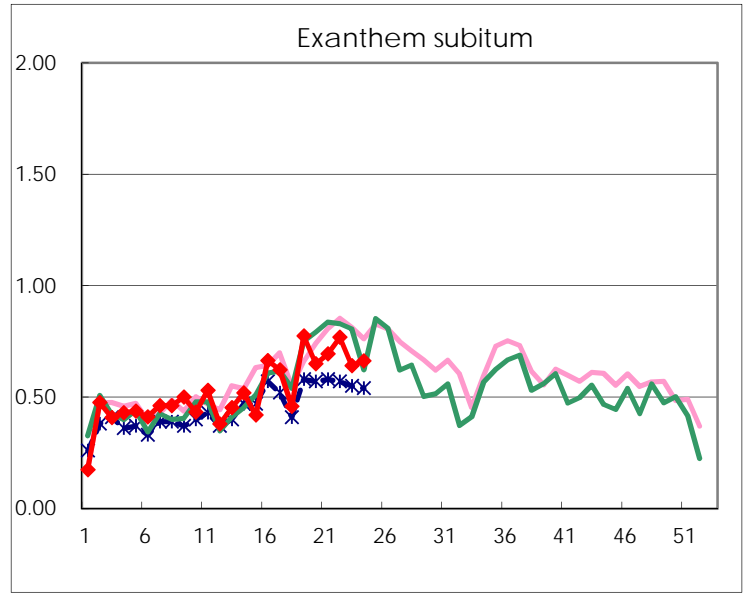
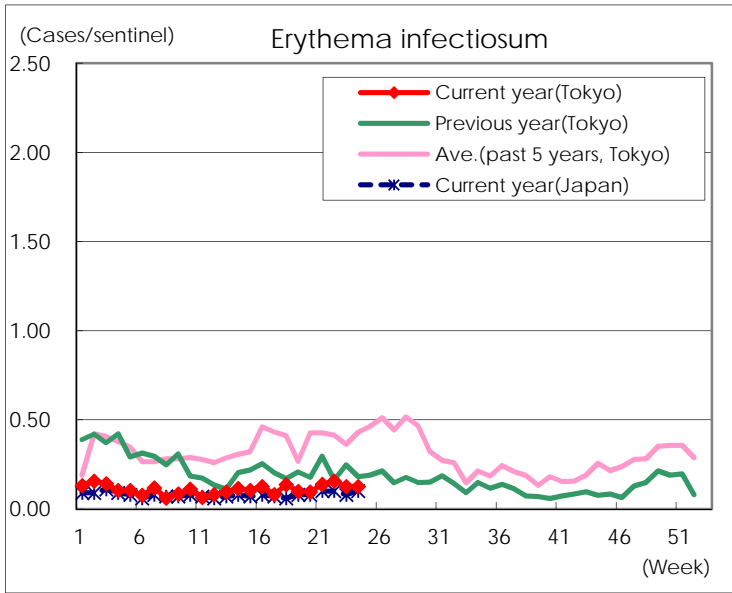
Number of patients with the diseases to be reported
by the designated clinics and hospitals

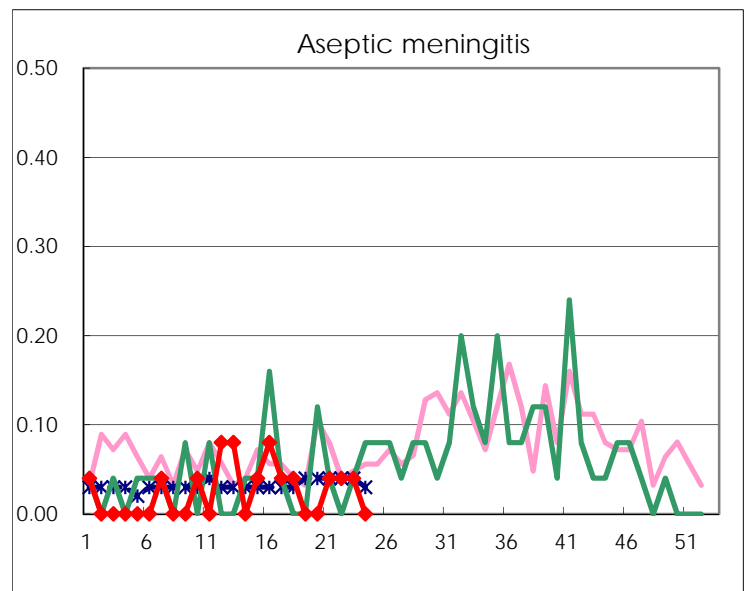
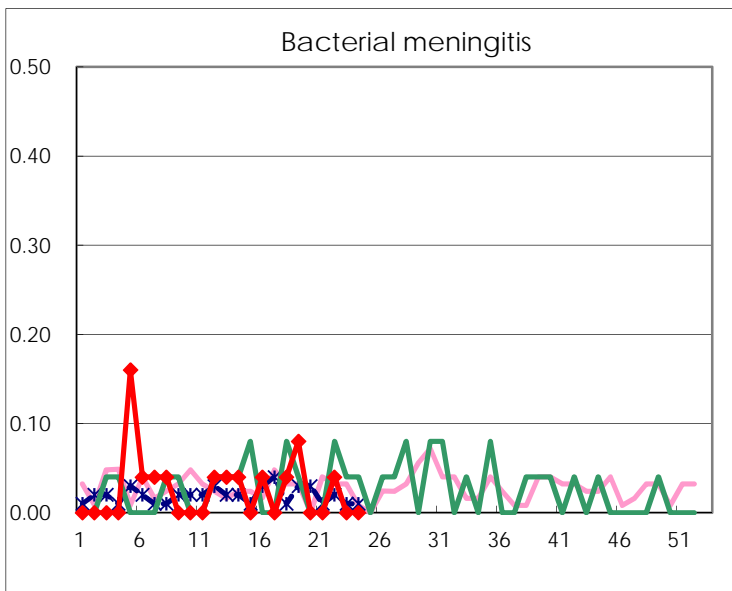
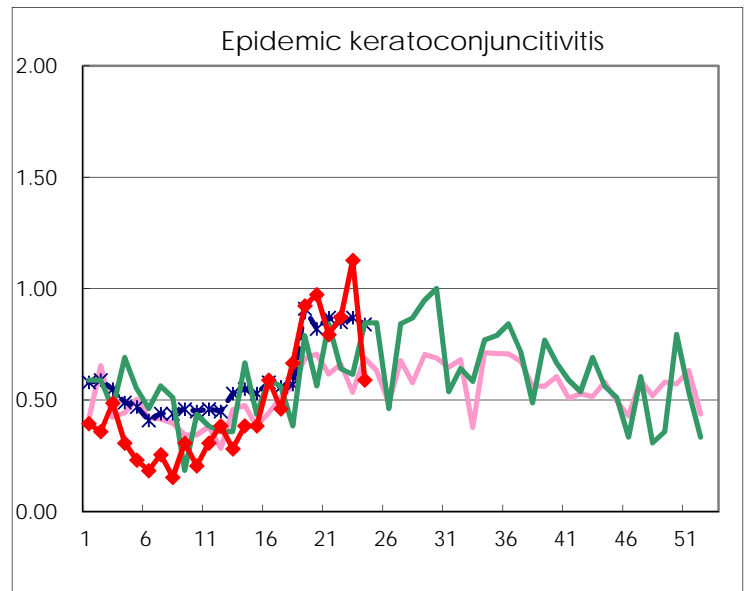
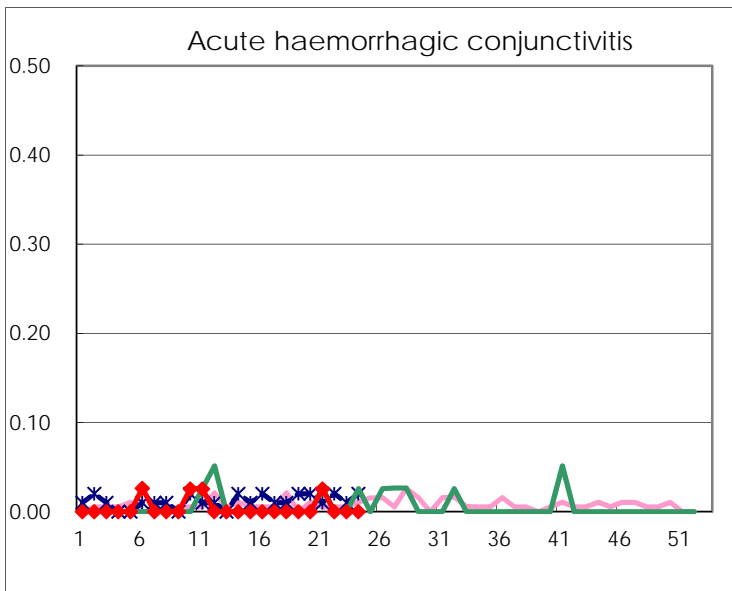
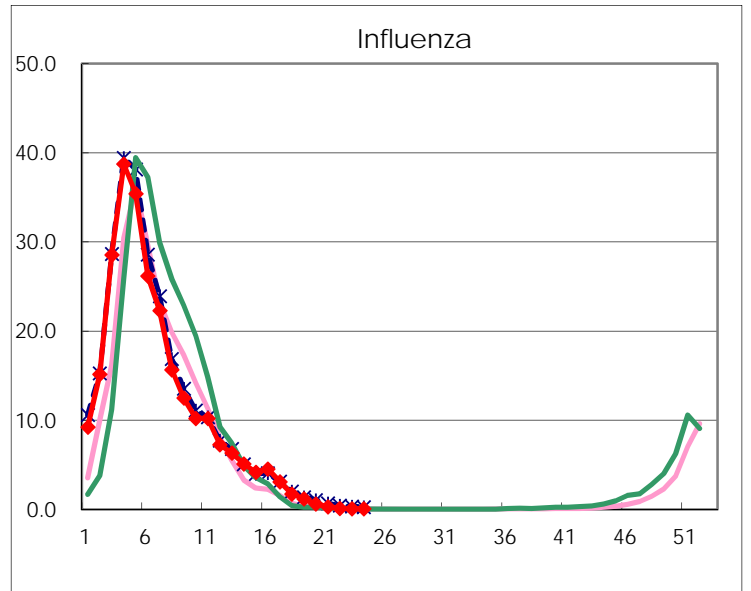
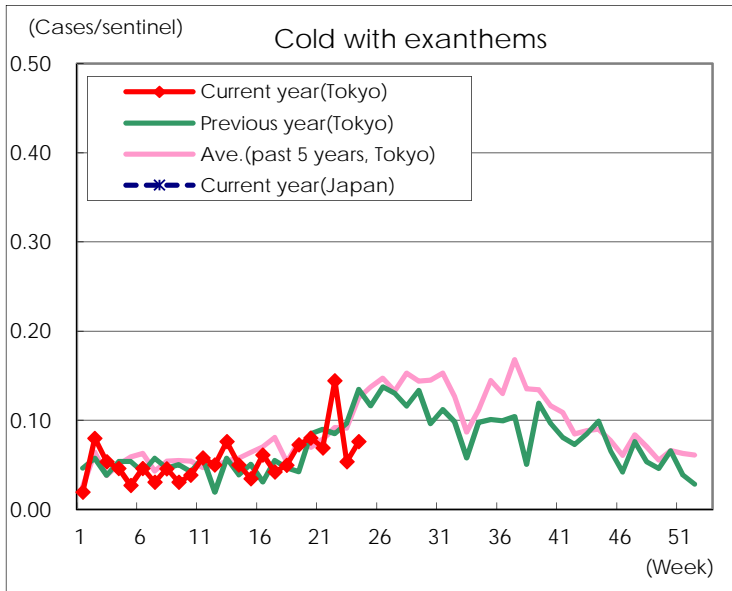
Diseases	Tokyo				
	21st	22nd	23rd	24th	/sentinel
Respiratory syncytial virus infection	56	63	59	62	0.24
Pharyngoconjunctival fever	212	286	303	289	1.10
Group A streptococcal pharyngitis	847	858	879	958	3.64
Infectious gastroenteritis	2,022	1,939	1,841	1,920	7.30
Chickenpox	157	134	104	118	0.45
Hand, foot, and mouth disease	143	222	267	362	1.38
Erythema infectiosum	36	41	33	33	0.13
Exanthem subitum	181	202	168	174	0.66
Pertussis	1	1	3	4	0.02
Herpangina	26	39	70	83	0.32
Mumps	45	65	59	63	0.24
Kawasaki disease	5	6	1	1	
Cold with exanthems	18	38	14	20	0.08
Influenza	123	48	26	27	0.07
Acute hemorrhagic conjunctivitis	1				
Epidemic keratoconjunctivitis	31	34	44	23	0.59
Bacterial meningitis		1			
Aseptic meningitis	1	1	1		
Mycoplasma pneumonia	2	3		4	0.16
Chlamydial pneumonia (excluding psittacosis)		1	2	1	0.04
Infectious gastroenteritis (only by Rotavirus)	7	3	5	5	0.20
Influenza-Associated Hospitalizations	1				

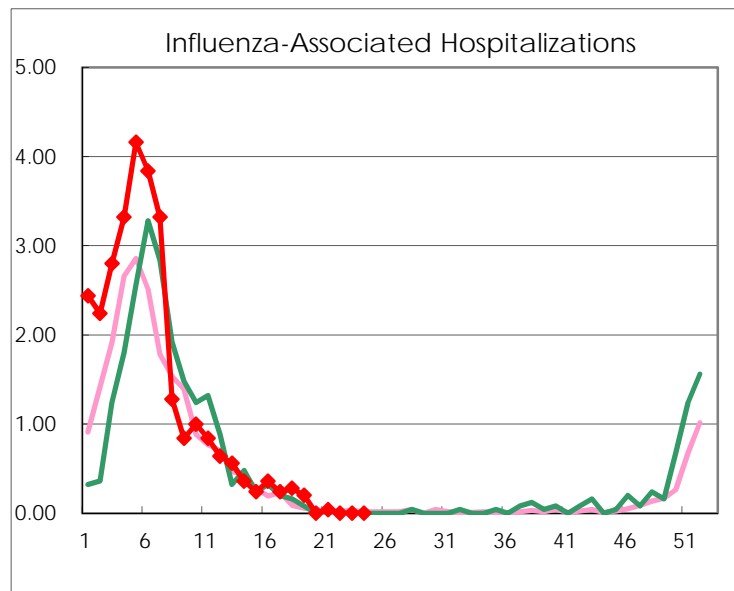
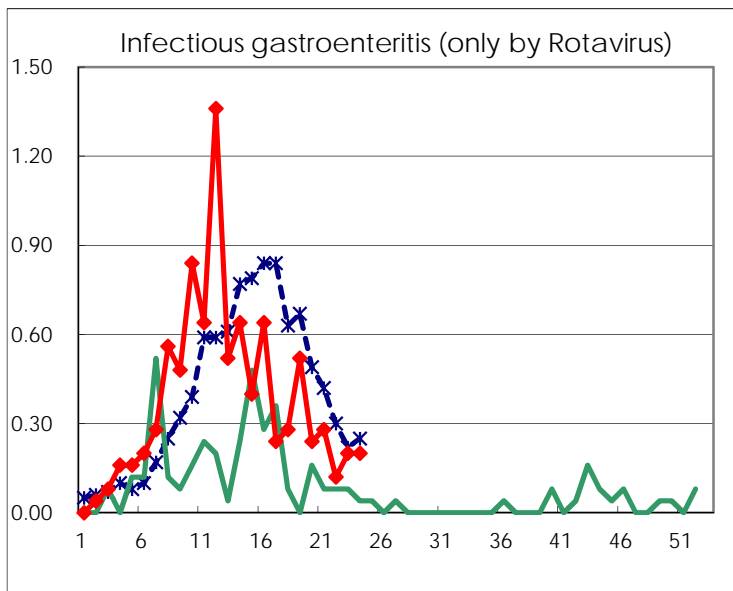
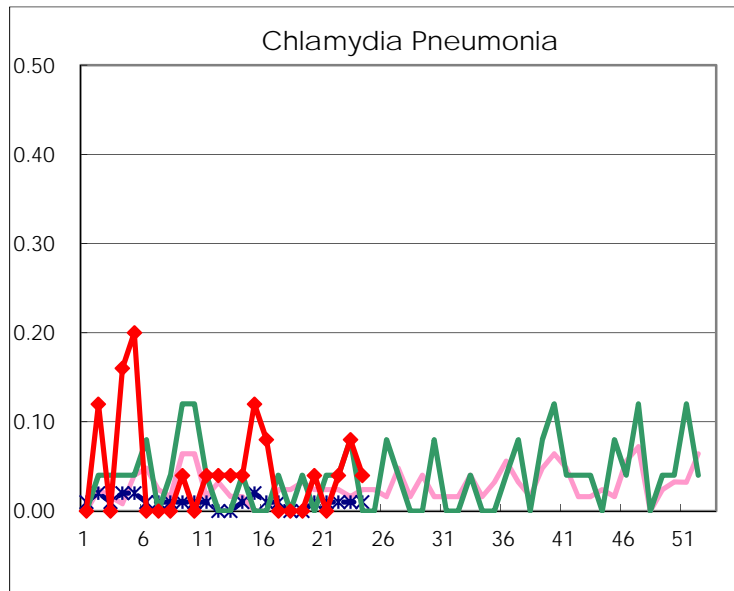
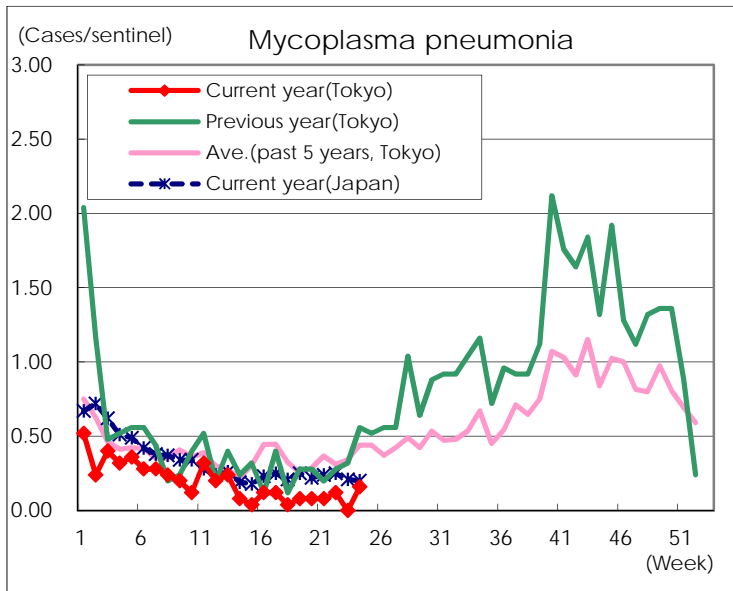
(Blank means 0.)

Disease Trend Graph (weekly reported cases per sentinel in comparison)









Number of sentinel facilities for weekly reporting		
Types of sentinels	Number of sentinels	Sentinels having reported
Pediatric	264	263
Influenza	419	414
Ophthalmic	39	39
Specially-designated	25	25