

29 June 2017 / Number 25

Surveillance System in Tokyo, Japan

The infectious diseases which all physicians must report

All physicians must report to health centers the incidence of the diseases which are shown at page one. Health centers electronically report the individual cases to Tokyo Metropolitan Infectious Disease Surveillance Center.

The infectious diseases required to be reported by the sentinels

The numbers of patients who visit the sentinel clinics or hospitals during a week are reported to health centers in Tokyo. And they electronically report the numbers to Tokyo Metropolitan Infectious Disease Surveillance Center. We have about 500 sentinel clinics and hospitals in Tokyo.

Tokyo Metropolitan Institute of Public Health

TEL:81-3-3363-3213 FAX:81-3-5332-7365

e-mail:www@tokyo-eiken.go.jp

URL:idsc.tokyo-eiken.go.jp/

Number of patients with the diseases which all physicians must report

Category	Diseases	Tokyo				Japan		
		22nd	23rd	24th	25th	Cum 2017	25th	Cum 2017
I	Ebola hemorrhagic fever							
	Crimean-Congo hemorrhagic fever							
	Smallpox							
	South American hemorrhagic fever							
	Plague							
	Marburg disease							
II	Lassa fever							
	Acute poliomyelitis							
	Tuberculosis	67	80	61	70	1,605	436	10,547
	Diphtheria							
	Severe Acute Respiratory Syndrome(SARS)							
	Middle East Respiratory Syndrome (MERS)							
III	Avian influenza H5N1							
	Avian influenza H7N9							
	Cholera					1	1	2
	Shigellosis	1		1		19	3	71
	Enterohemorrhagic Escherichia coli infection	2	2	5	5	59	81	704
IV	Typhoid fever				1	3	1	16
	Paratyphoid fever	1				3		7
	Hepatitis E	1	1	2	3	35	7	173
	West Nile fever							
	Hepatitis A	3		2	2	46	4	153
	Echinococcosis							14
	Yellow fever							
	Psittacosis						2	10
	Omsk hemorrhagic fever							
	Relapsing fever							
	Kyasanur forest disease							
	Q fever							
	Rabies							
	Coccidioidomycosis							
	Monkeypox							
	Zika virus infection							1
	Severe Fever with Thrombocytopenia Syndrome						3	37
	Hemorrhagic fever with renal syndrome							
	Western equine encephalitis							
	Tick-borne encephalitis							
	Anthrax							
	Chikungunya fever					1		1
	Scrub typhus(Tsutsugamushi disease)					2	2	91
	Dengue fever			1	2	21	3	84
	Eastern equine encephalitis							
	Avian influenza (excluding H5N1 and H7N9)							
	Nipah virus infection							
	Japanese spotted fever						7	89
	Japanese encephalitis							
	Hantavirus pulmonary syndrome							
	Herpes B virus infection							
	Glanders							
Brucellosis							1	
Venezuelan equine encephalitis								
Hendra virus infection								
Epidemic typhus								
Botulism					1		1	
Malaria			1		6	2	17	
Tularemia								
Lyme disease							2	
Lyssavirus infection(excluding rabies)								
Rift valley fever								
Melioidosis				1	1	1	1	
Legionellosis	2	1		1	56	33	608	
Leptospirosis					1		2	
Rocky mountain spotted fever								

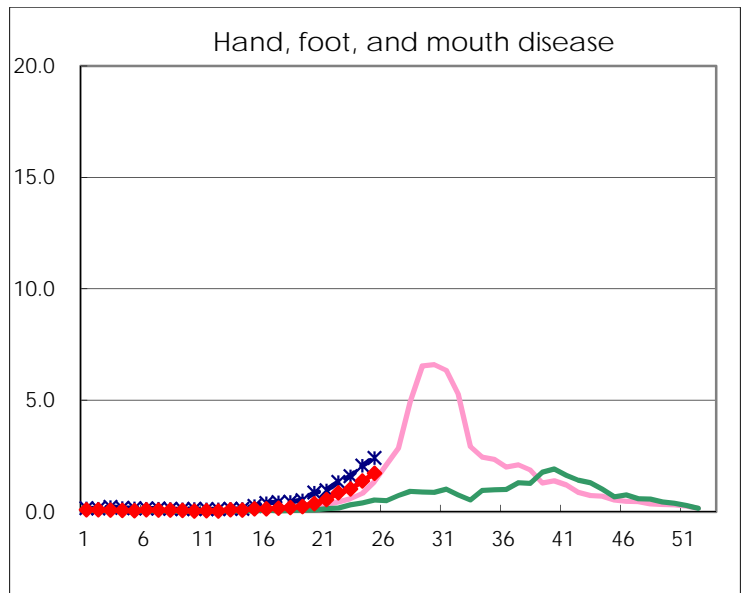
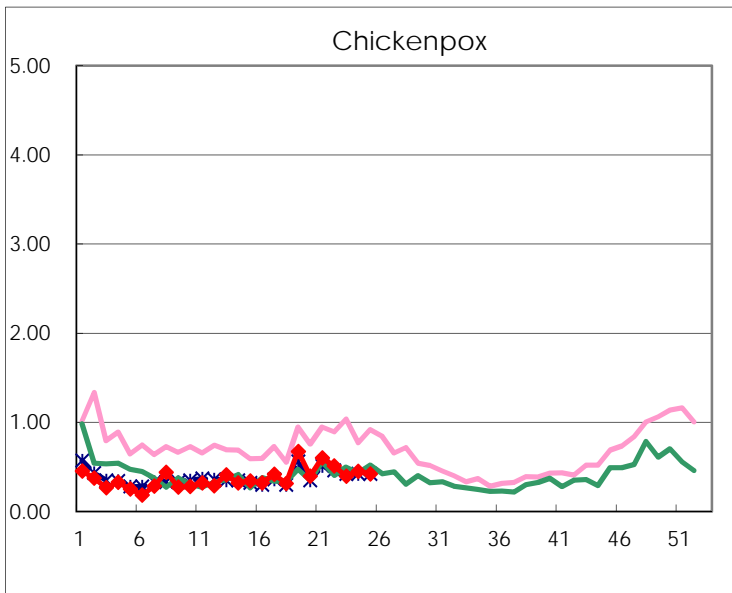
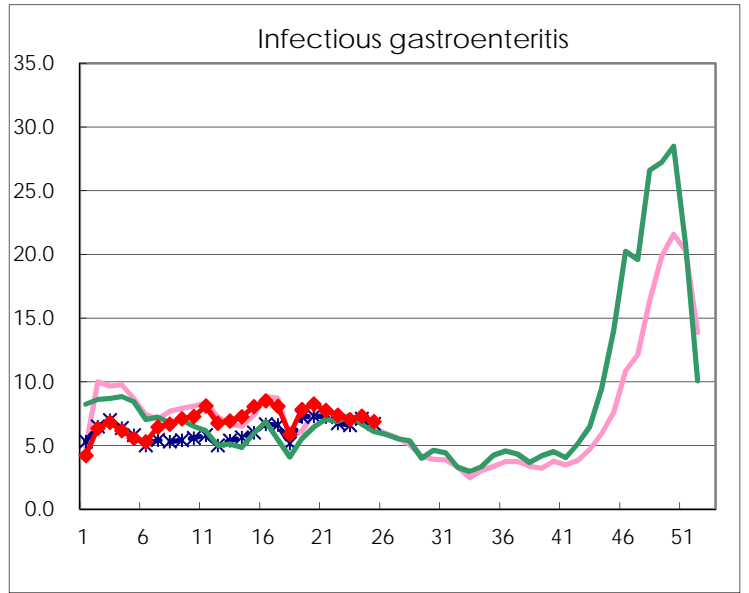
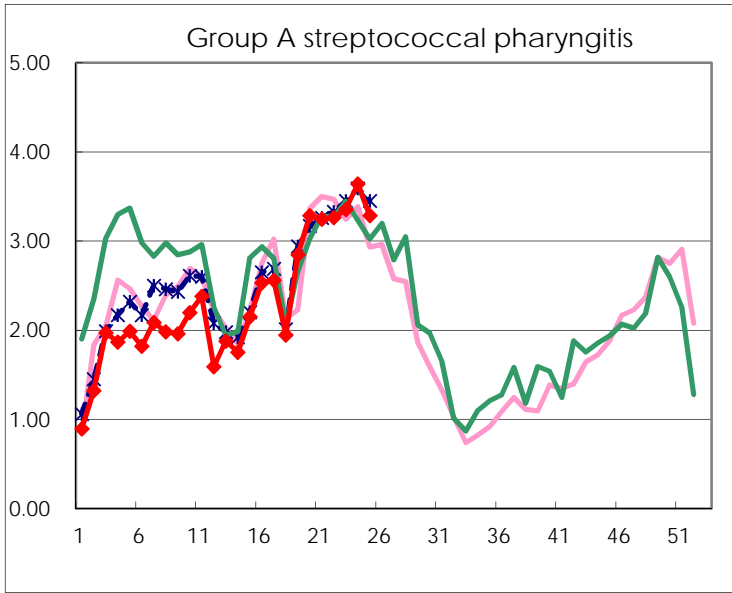
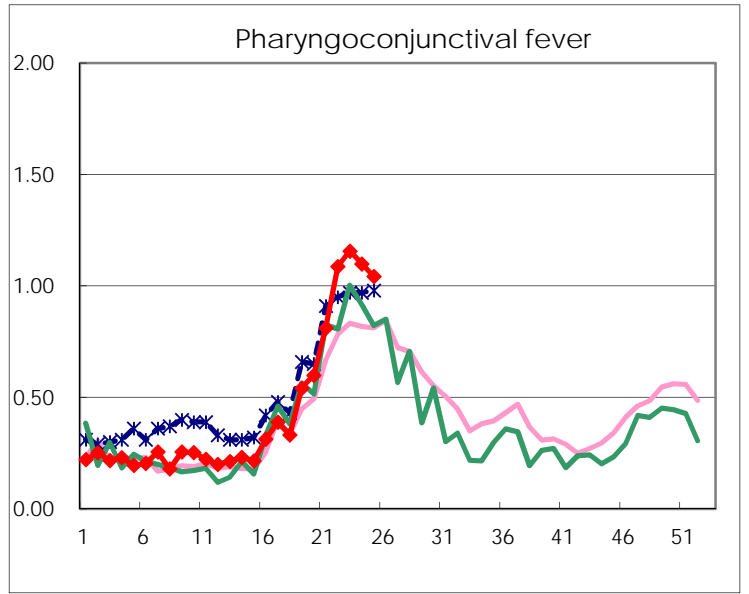
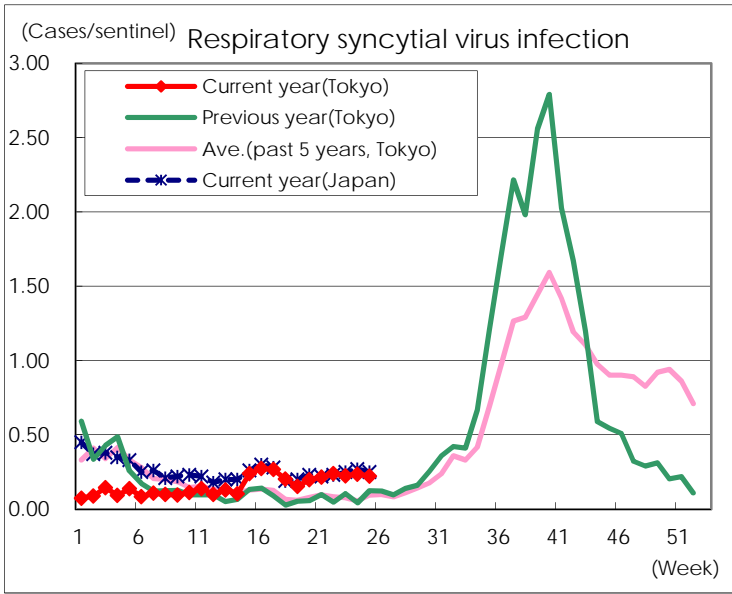
Category	Diseases	Tokyo				Japan		
		22nd	23rd	24th	25th	Cum 2017	25th	Cum 2017
V	Amebiasis	5	3	9	6	105	12	520
	Viral hepatitis(excluding hepatitis A and E)	1	1	1	2	28	2	142
	CRE infection	4	3	7	2	91	25	688
	Acute encephalitis(excluding JE and WNE)	1			2	32	7	347
	Cryptosporidiosis							7
	Creutzfeldt-Jakob disease					7	4	90
	Severe invasive streptococcal infections(TSLS)	5	2	2	1	44	7	298
	Acquired immunodeficiency syndrome (AIDS)	7	8	5	8	211	17	646
	Giardiasis		1		1	15	2	34
	Invasive <i>Haemophilus influenzae</i> disease			1	2	26	4	188
	Invasive meningococcal disease				1	2	1	12
	Invasive pneumococcal disease	7	8	11	5	255	37	1,921
	Varicella (limited to hospitalized case)	2		1	1	23	6	143
	Congenital rubella syndrome							
	Syphilis	44	35	34	30	794	70	2,456
	Disseminated cryptococcosis	1		1		10	2	70
	Tetanus	1				2	2	40
	Vancomycin-resistant <i>S. aureus</i> infection							
	Vancomycin-resistant Enterococcus infection		1			5	5	44
	Rubella		1	2		11		46
Measles					17		162	
MDRA infection					1		12	

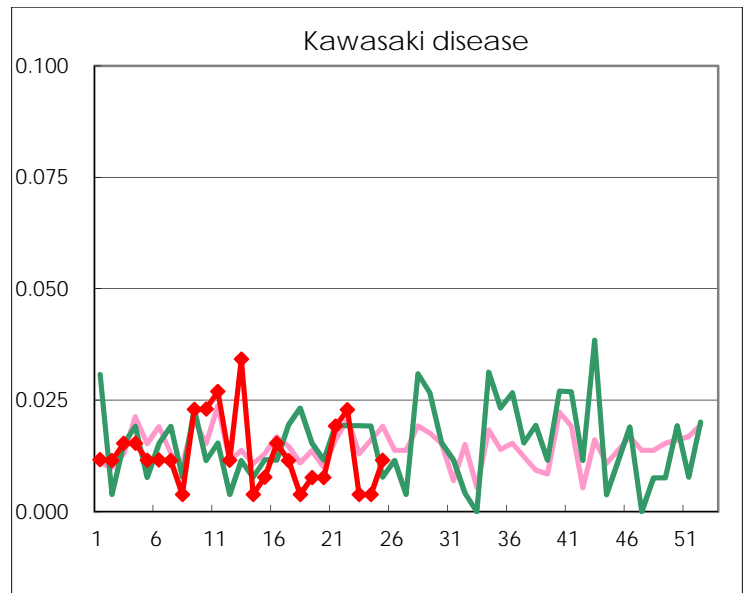
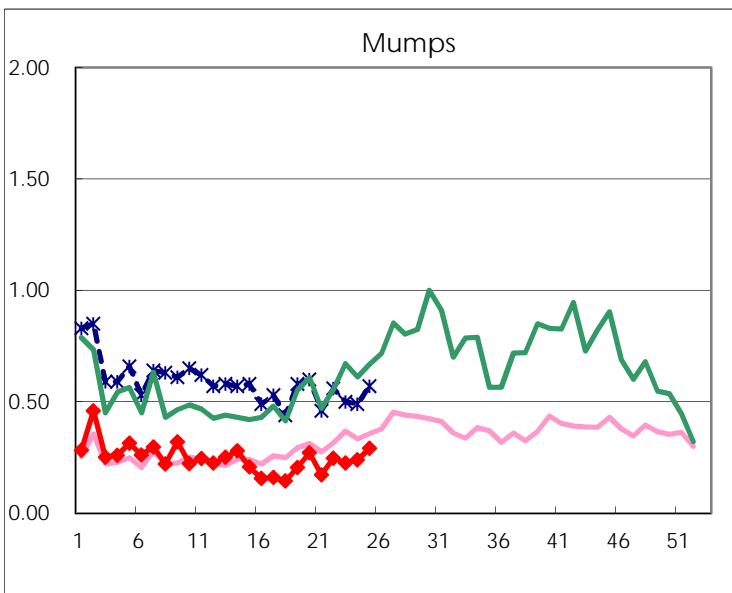
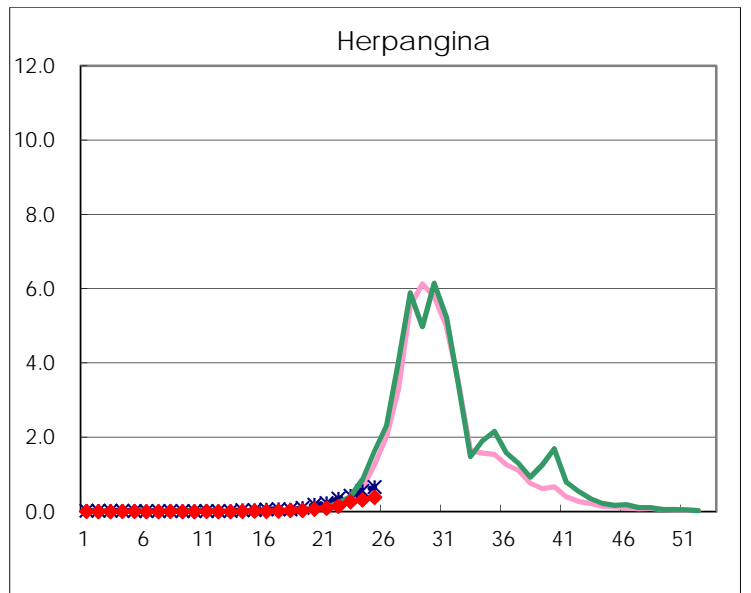
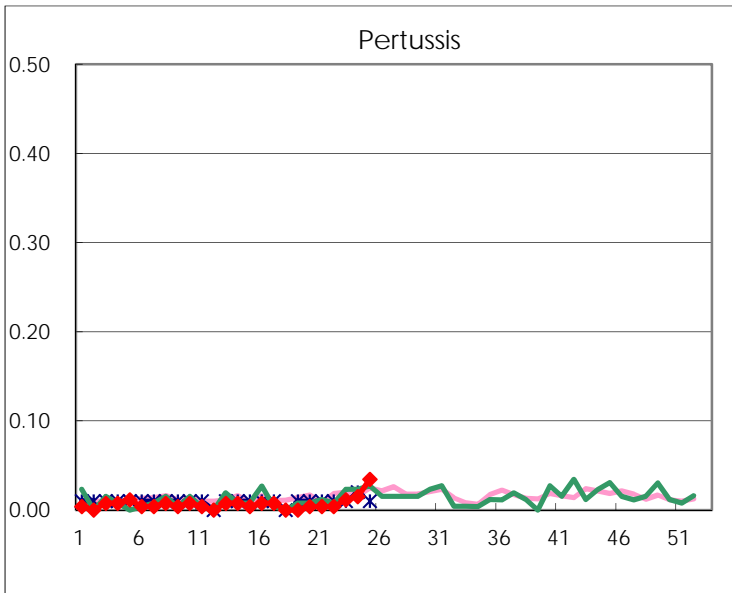
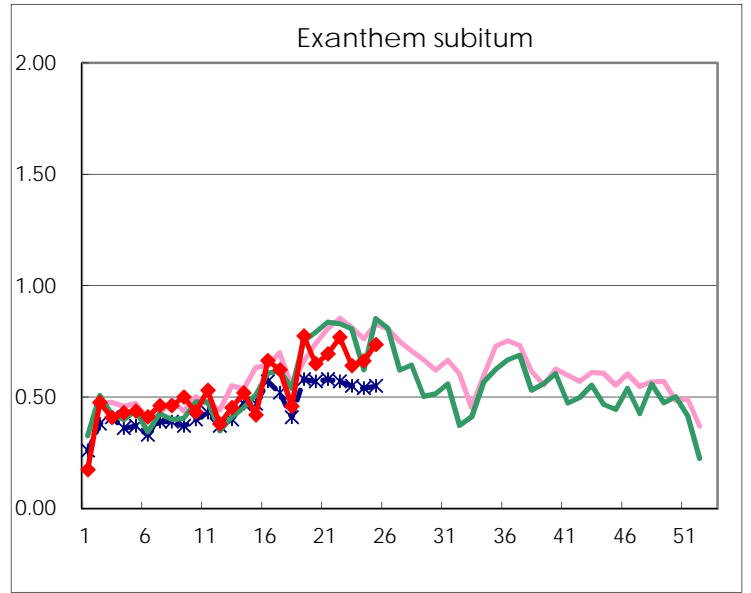
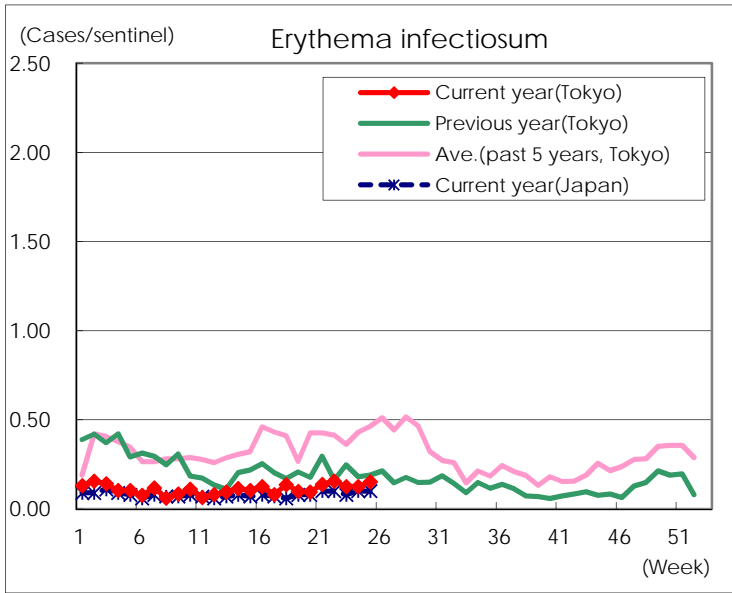
Number of patients with the diseases to be reported
by the designated clinics and hospitals

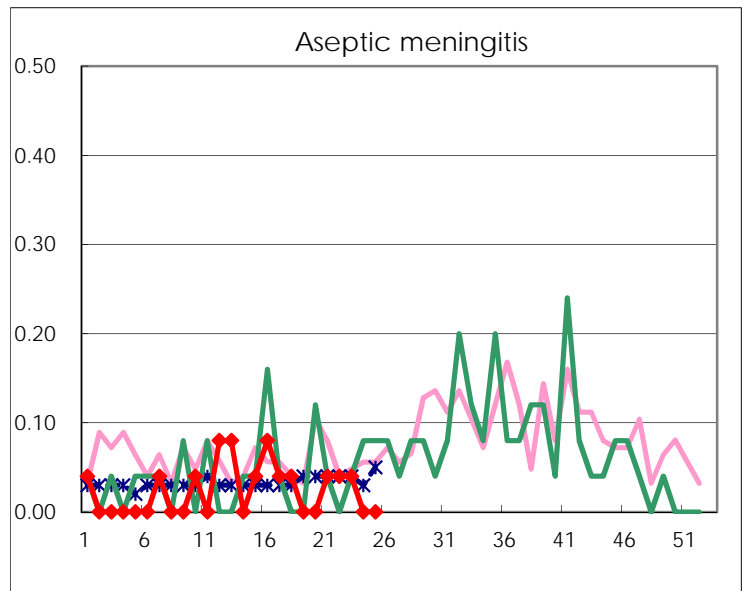
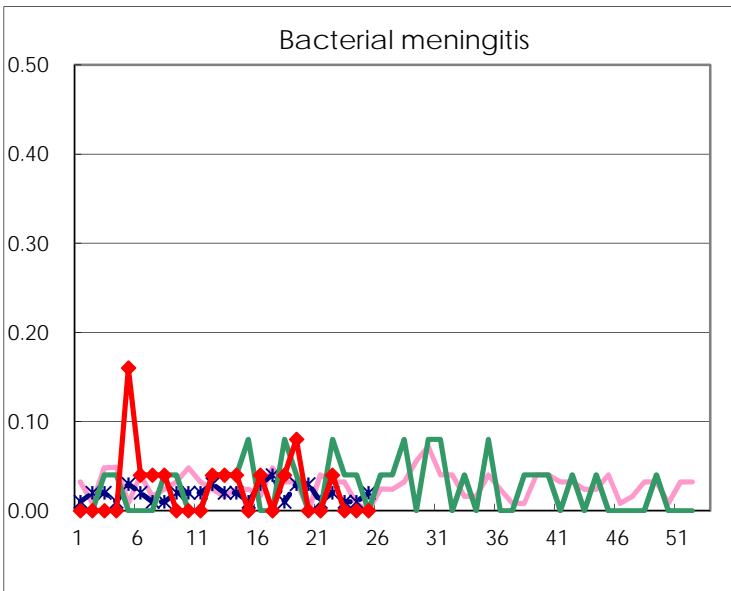
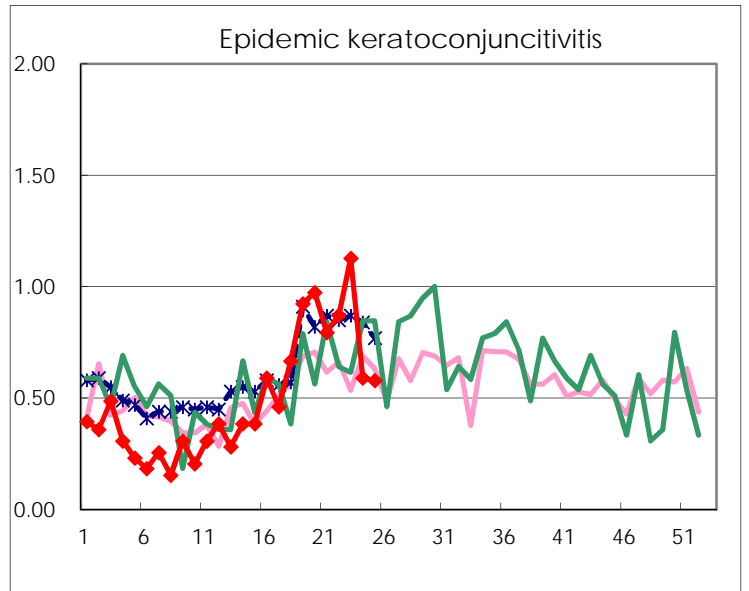
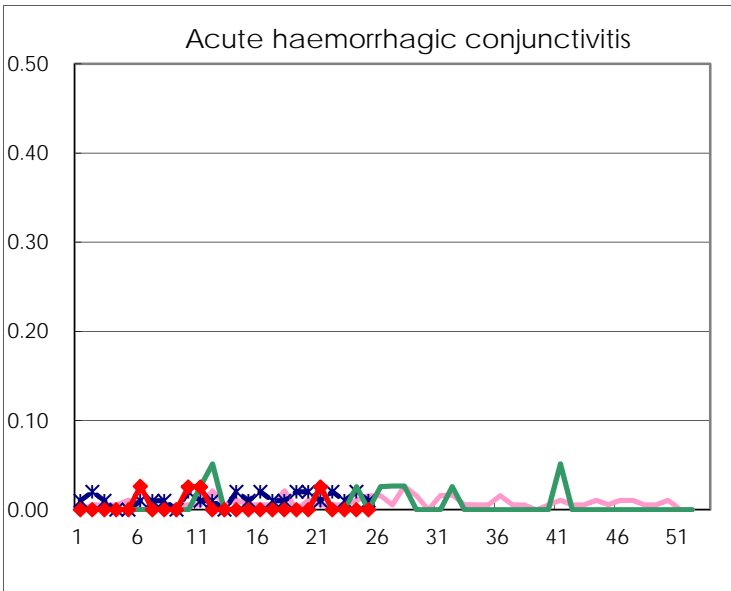
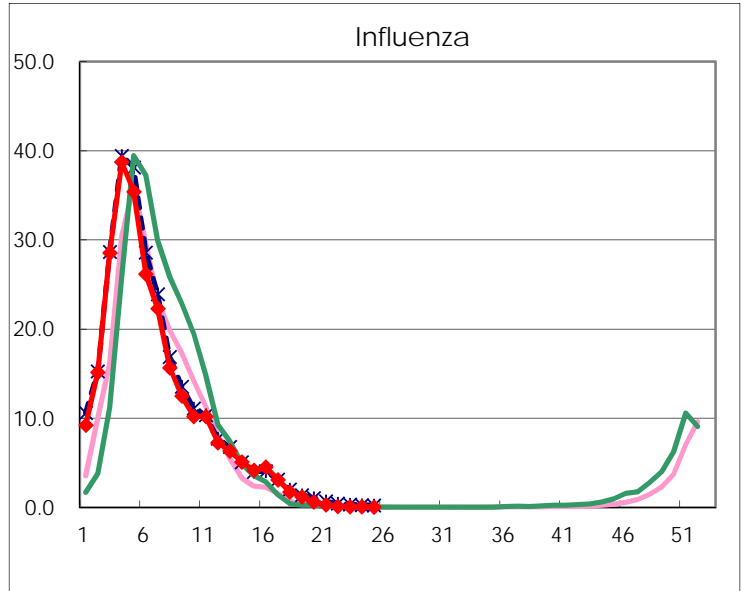
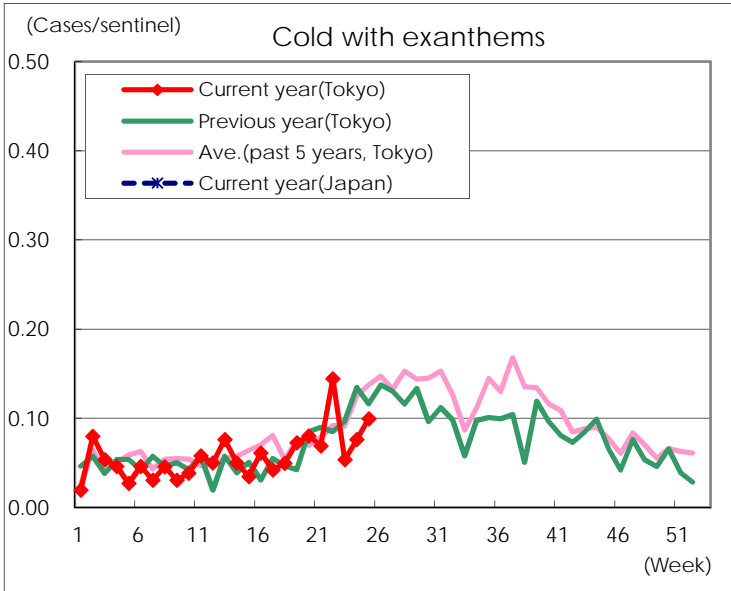
Diseases	Tokyo				
	22nd	23rd	24th	25th	/sentinel
Respiratory syncytial virus infection	63	59	62	58	0.22
Pharyngoconjunctival fever	286	303	289	272	1.04
Group A streptococcal pharyngitis	858	879	958	858	3.29
Infectious gastroenteritis	1,939	1,841	1,920	1,794	6.87
Chickenpox	134	104	118	110	0.42
Hand, foot, and mouth disease	222	267	362	449	1.72
Erythema infectiosum	41	33	33	40	0.15
Exanthem subitum	202	168	174	192	0.74
Pertussis	1	3	4	9	0.03
Herpangina	39	70	83	102	0.39
Mumps	65	59	63	76	0.29
Kawasaki disease	6	1	1	3	0.01
Cold with exanthems	38	14	20	26	0.10
Influenza	48	26	27	17	0.04
Acute hemorrhagic conjunctivitis					
Epidemic keratoconjunctivitis	34	44	23	22	0.58
Bacterial meningitis	1				
Aseptic meningitis	1	1			
Mycoplasma pneumonia	3		4	5	0.20
Chlamydial pneumonia (excluding psittacosis)	1	2	1	1	0.04
Infectious gastroenteritis (only by Rotavirus)	3	5	5	1	0.04
Influenza-Associated Hospitalizations					

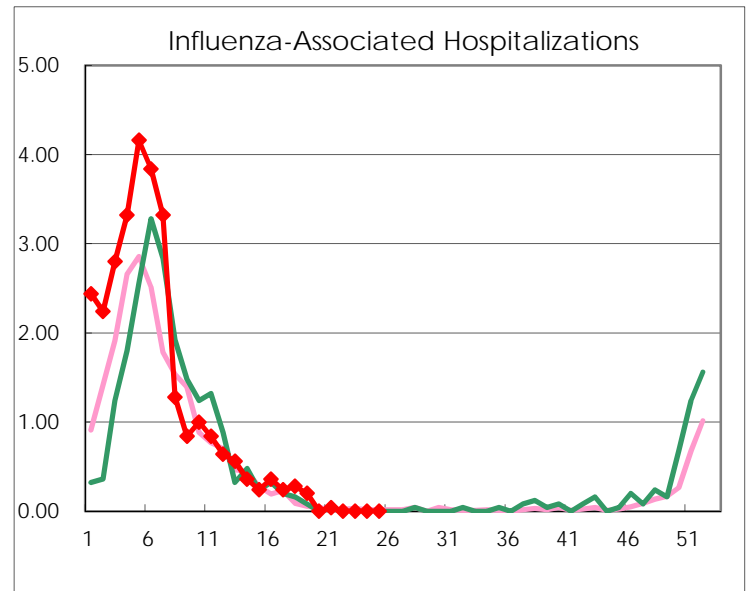
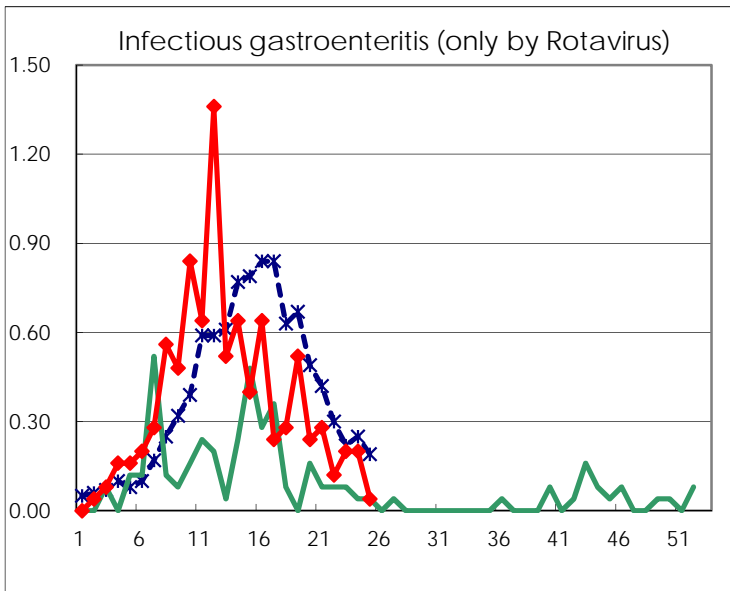
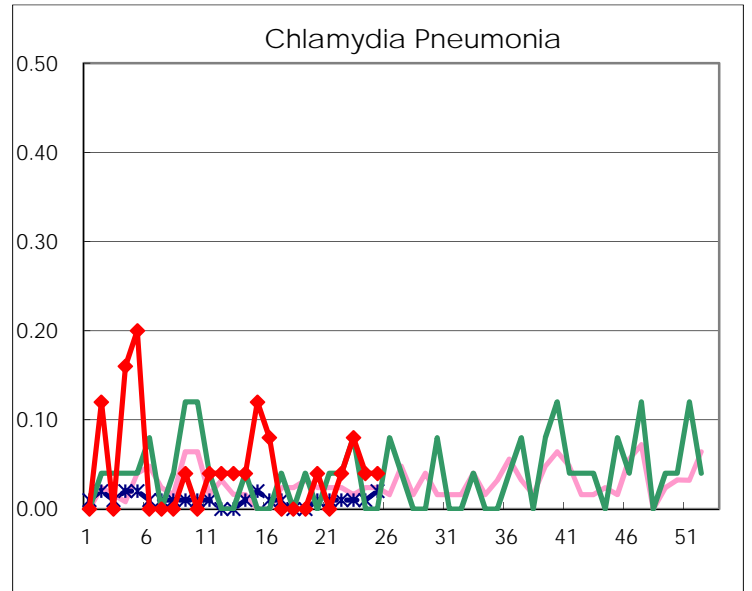
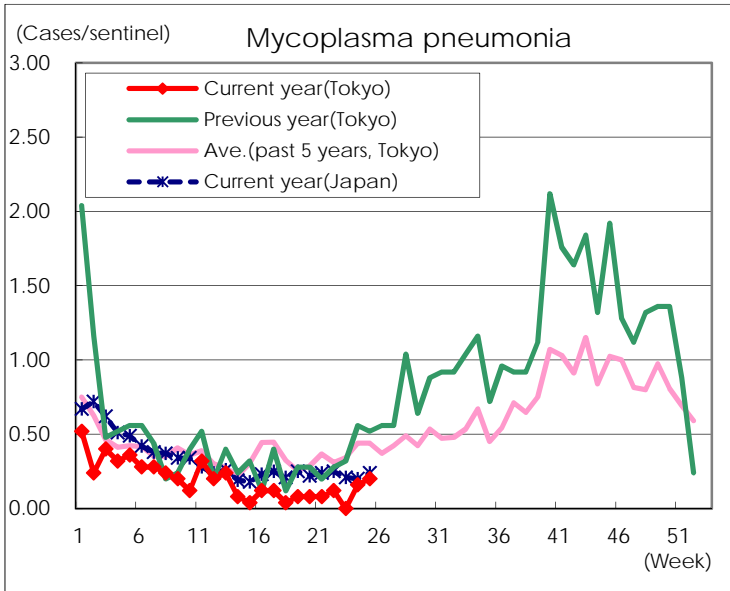
(Blank means 0.)

Disease Trend Graph (weekly reported cases per sentinel in comparison)









Number of sentinel facilities for weekly reporting		
Types of sentinels	Number of sentinels	Sentinels having reported
Pediatric	264	261
Influenza	419	413
Ophthalmic	39	38
Specially-designated	25	25