

6 July 2017 / Number 26

Surveillance System in Tokyo, Japan

The infectious diseases which all physicians must report

All physicians must report to health centers the incidence of the diseases which are shown at page one. Health centers electronically report the individual cases to Tokyo Metropolitan Infectious Disease Surveillance Center.

The infectious diseases required to be reported by the sentinels

The numbers of patients who visit the sentinel clinics or hospitals during a week are reported to health centers in Tokyo. And they electronically report the numbers to Tokyo Metropolitan Infectious Disease Surveillance Center. We have about 500 sentinel clinics and hospitals in Tokyo.

Tokyo Metropolitan Institute of Public Health

TEL:81-3-3363-3213 FAX:81-3-5332-7365

e-mail:www@tokyo-eiken.go.jp

URL:idsc.tokyo-eiken.go.jp/

Number of patients with the diseases which all physicians must report

Category	Diseases	Tokyo					Japan	
		23rd	24th	25th	26th	Cum 2017	26th	Cum 2017
I	Ebola hemorrhagic fever							
	Crimean-Congo hemorrhagic fever							
	Smallpox							
	South American hemorrhagic fever							
	Plague							
	Marburg disease							
II	Lassa fever							
	Acute poliomyelitis							
	Tuberculosis	81	62	71	59	1,667	366	10,999
	Diphtheria							
	Severe Acute Respiratory Syndrome(SARS)							
	Middle East Respiratory Syndrome (MERS)							
III	Avian influenza H5N1							
	Avian influenza H7N9							
	Cholera					1		2
	Shigellosis		1			19	2	73
	Enterohemorrhagic Escherichia coli infection	2	5	5	4	63	62	767
IV	Typhoid fever			1	2	5	4	20
	Paratyphoid fever					3		7
	Hepatitis E	1	2	3	1	36	3	178
	West Nile fever							
	Hepatitis A		2	2		46	4	157
	Echinococcosis						2	16
	Yellow fever							
	Psittacosis						1	11
	Omsk hemorrhagic fever							
	Relapsing fever							
	Kyasanur forest disease							
	Q fever							
	Rabies							
	Coccidioidomycosis							
	Monkeypox							
	Zika virus infection							1
	Severe Fever with Thrombocytopenia Syndrome						2	40
	Hemorrhagic fever with renal syndrome							
	Western equine encephalitis							
	Tick-borne encephalitis							
	Anthrax							
	Chikungunya fever					1		1
	Scrub typhus(Tsutsugamushi disease)					2	3	96
	Dengue fever		1	2	4	25	5	89
	Eastern equine encephalitis							
	Avian influenza (excluding H5N1 and H7N9)							
	Nipah virus infection							
	Japanese spotted fever						7	99
	Japanese encephalitis							
	Hantavirus pulmonary syndrome							
Herpes B virus infection								
Glanders								
Brucellosis							1	
Venezuelan equine encephalitis								
Hendra virus infection								
Epidemic typhus								
Botulism					1		1	
Malaria		1		1	7	3	20	
Tularemia								
Lyme disease						1	4	
Lyssavirus infection(excluding rabies)								
Rift valley fever								
Melioidosis			1		1		1	
Legionellosis	1		1	3	59	30	642	
Leptospirosis					1		2	
Rocky mountain spotted fever								

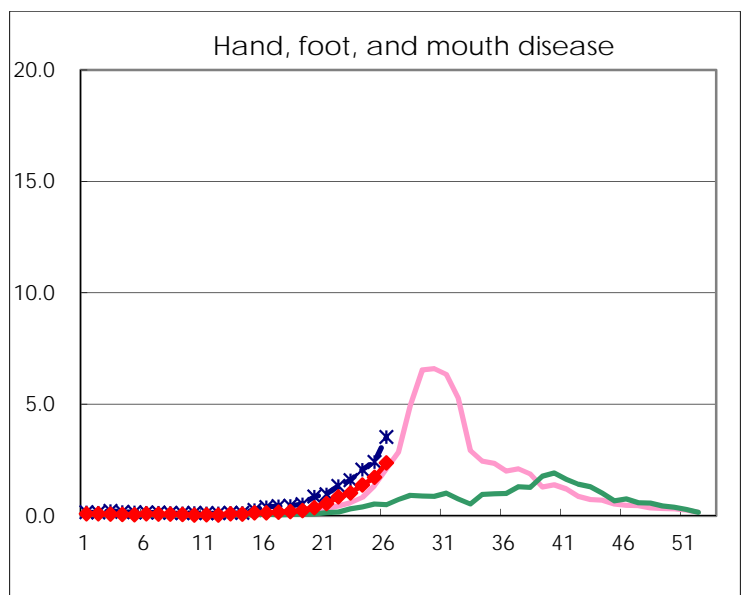
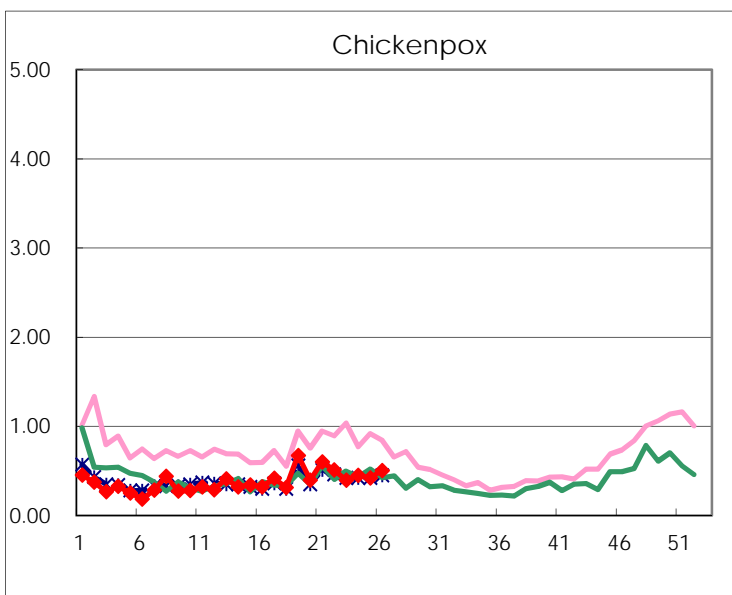
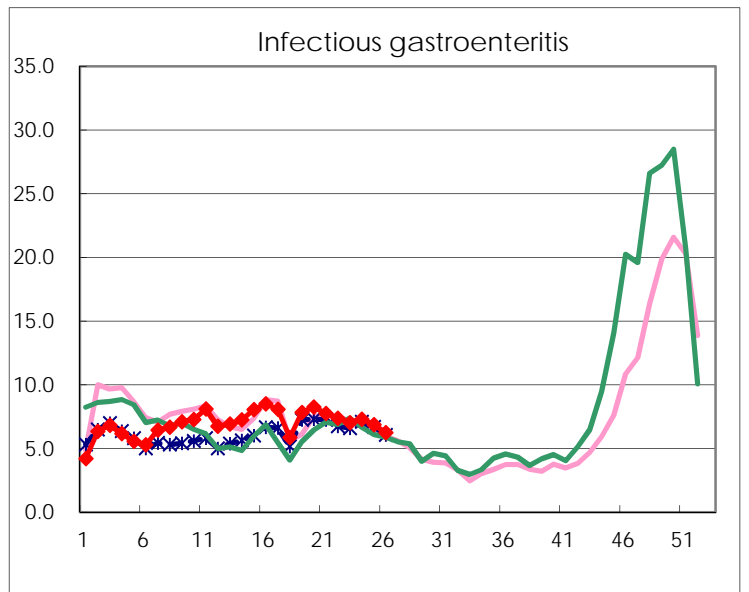
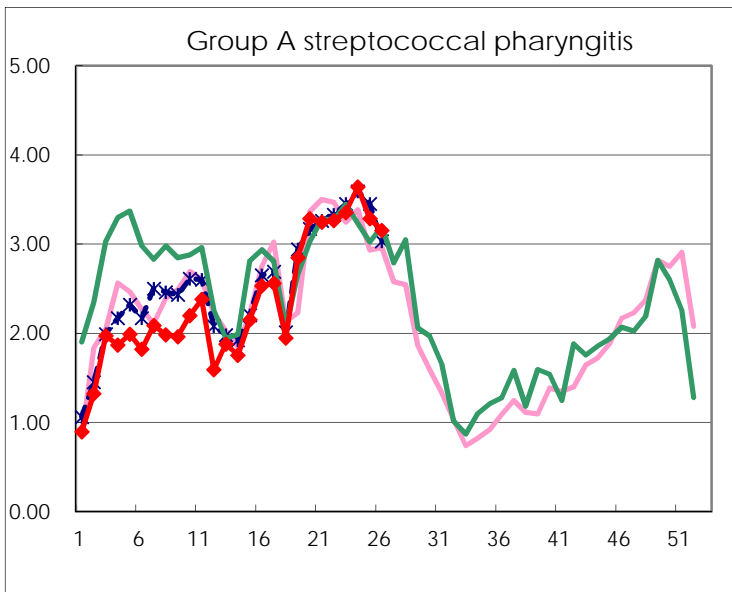
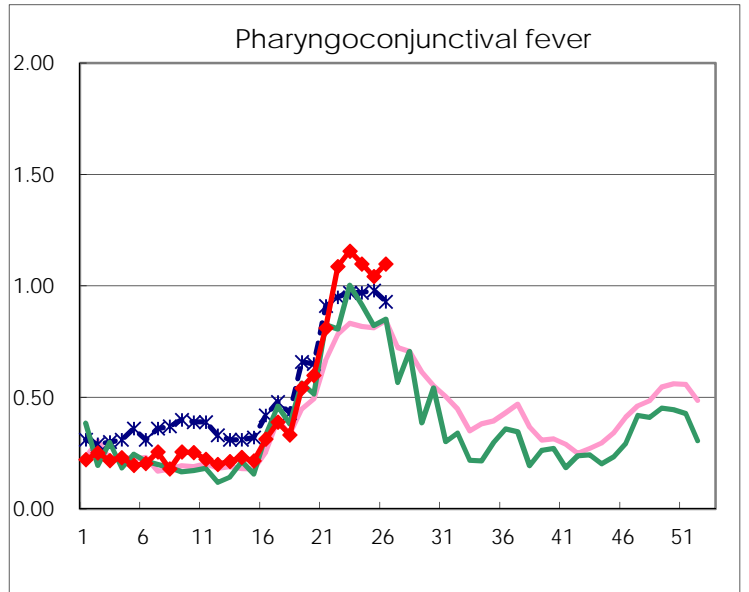
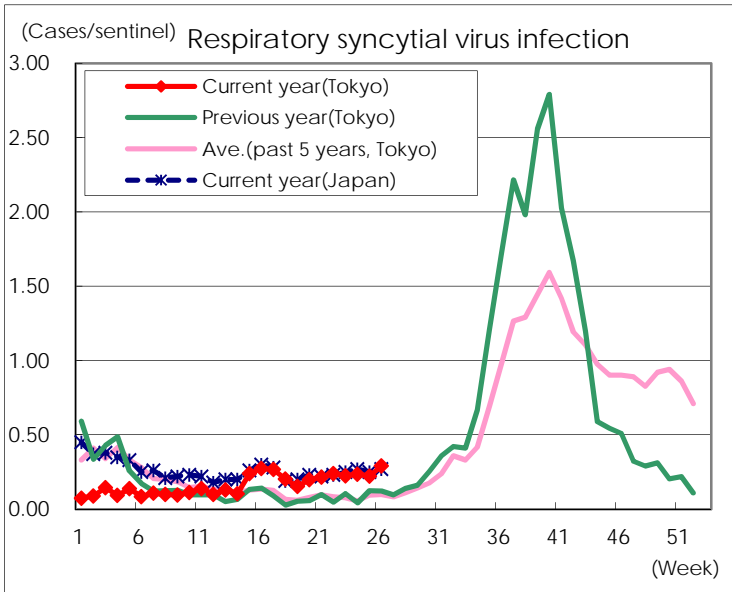
Category	Diseases	Tokyo					Japan	
		23rd	24th	25th	26th	Cum 2017	26th	Cum 2017
V	Amebiasis	3	9	6	5	110	15	543
	Viral hepatitis(excluding hepatitis A and E)	1	1	2	2	30	3	148
	CRE infection	3	8	2	3	95	21	723
	Acute encephalitis(excluding JE and WNE)			2	2	34	9	362
	Cryptosporidiosis							7
	Creutzfeldt-Jakob disease				1	8	4	94
	Severe invasive streptococcal infections(TSLS)	2	2	1		44	9	309
	Acquired immunodeficiency syndrome (AIDS)	8	5	10	10	223	22	679
	Giardiasis	1		1		15		35
	Invasive <i>Haemophilus influenzae</i> disease		1	2		26	1	192
	Invasive meningococcal disease			1		2		12
	Invasive pneumococcal disease	8	11	6	8	264	39	1,978
	Varicella (limited to hospitalized case)		1	1	3	26	5	152
	Congenital rubella syndrome							
	Syphilis	35	34	33	47	844	108	2,613
	Disseminated cryptococcosis		1			10	1	73
	Tetanus					2	2	43
	Vancomycin-resistant <i>S. aureus</i> infection							
	Vancomycin-resistant Enterococcus infection	1				5		44
	Rubella	1	2			11	1	47
Measles					17		162	
MDRA infection					1		12	

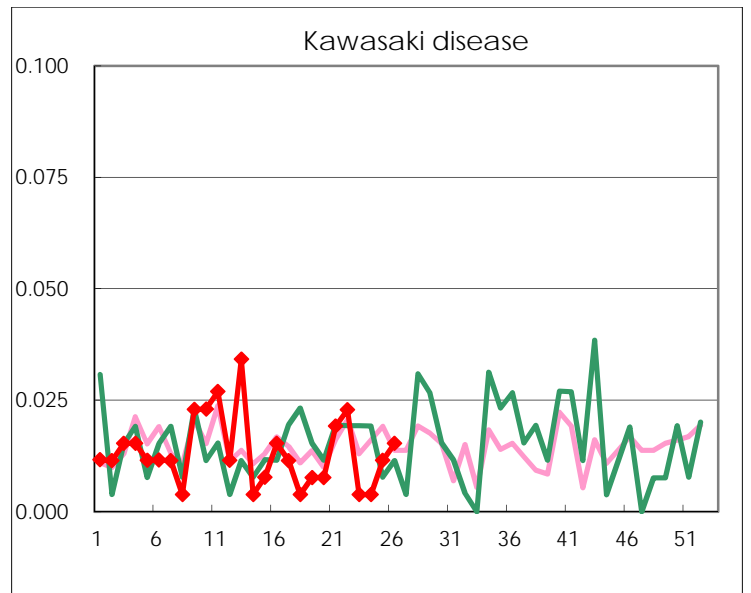
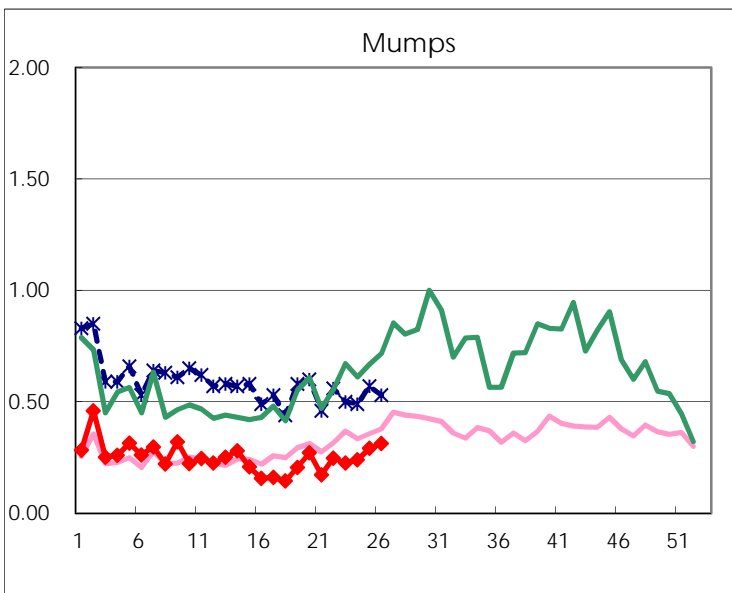
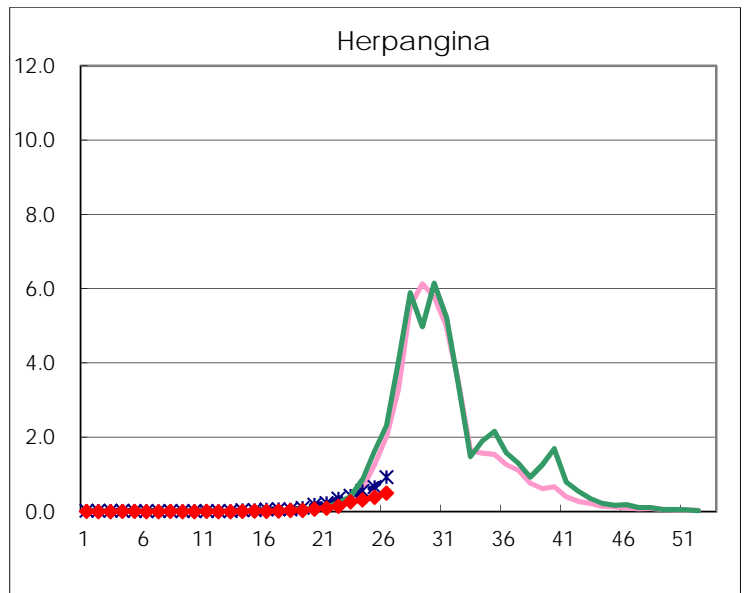
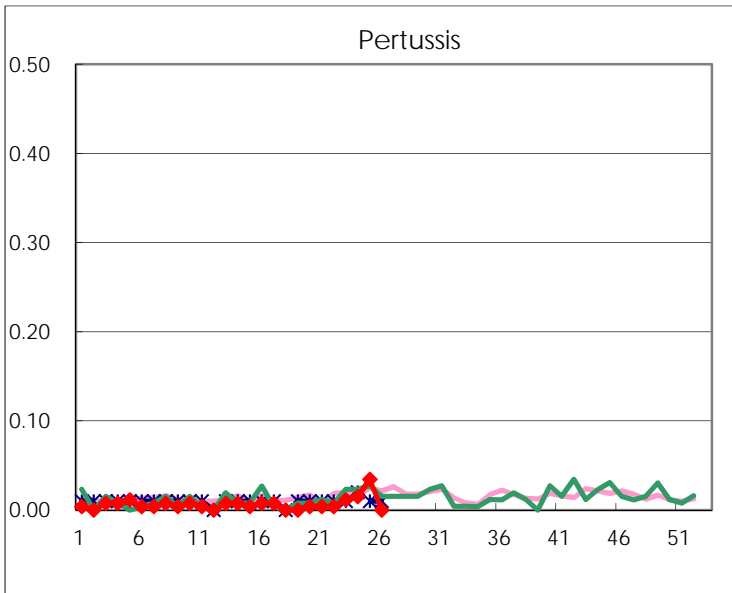
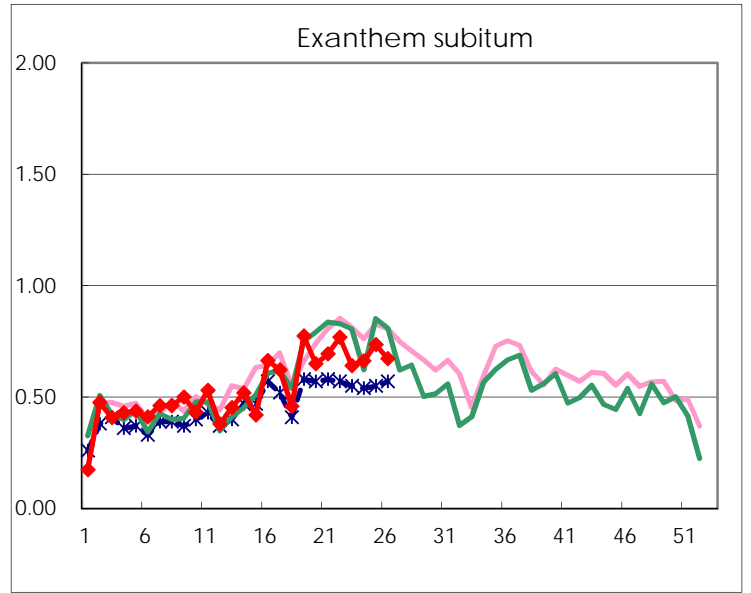
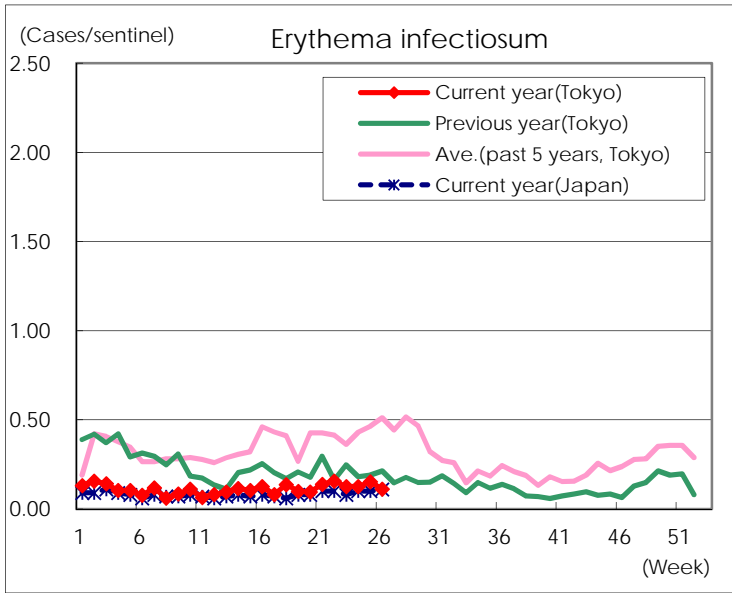
Number of patients with the diseases to be reported
by the designated clinics and hospitals

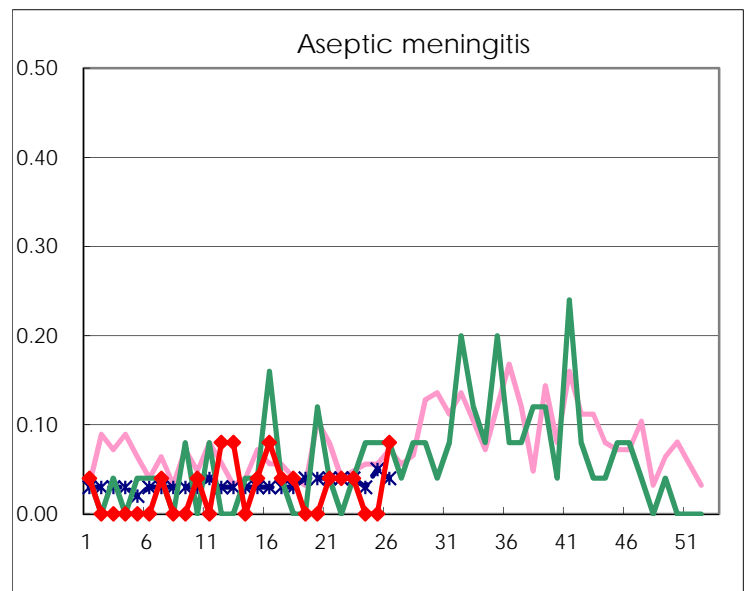
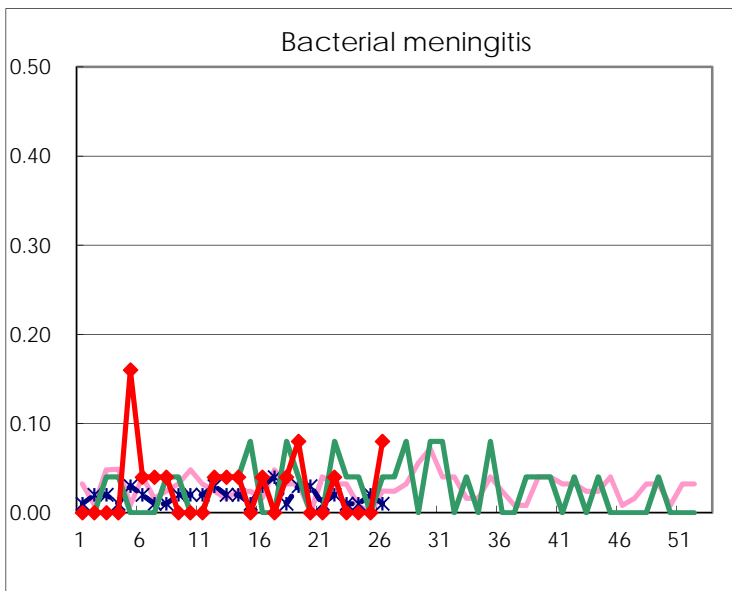
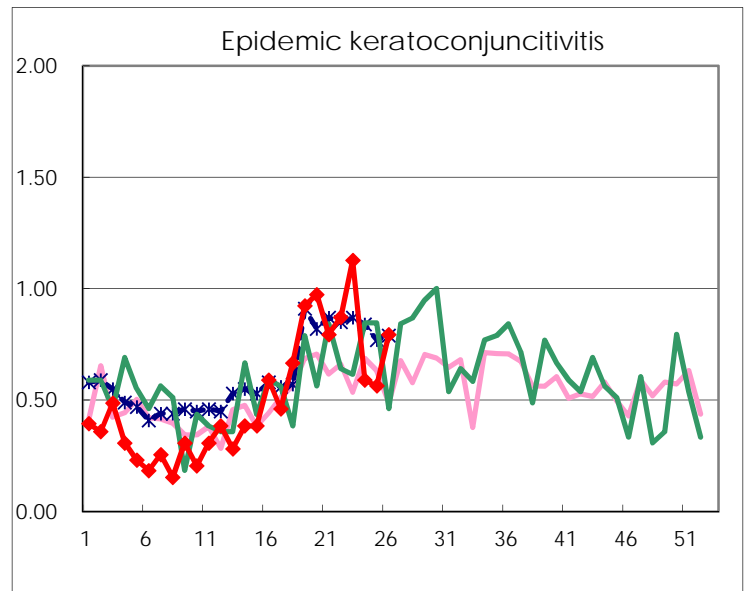
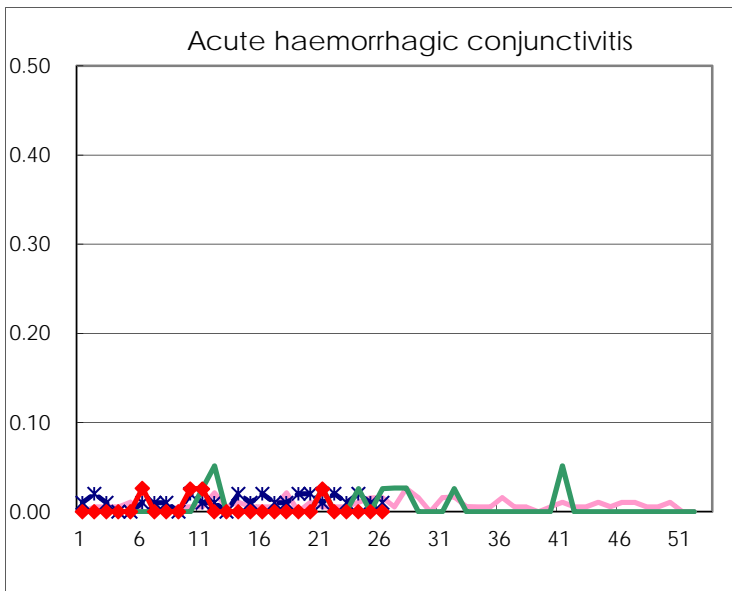
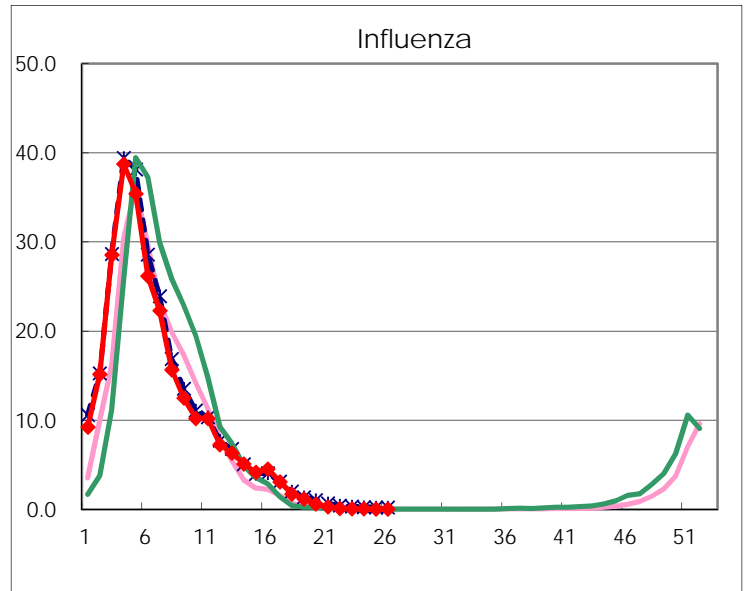
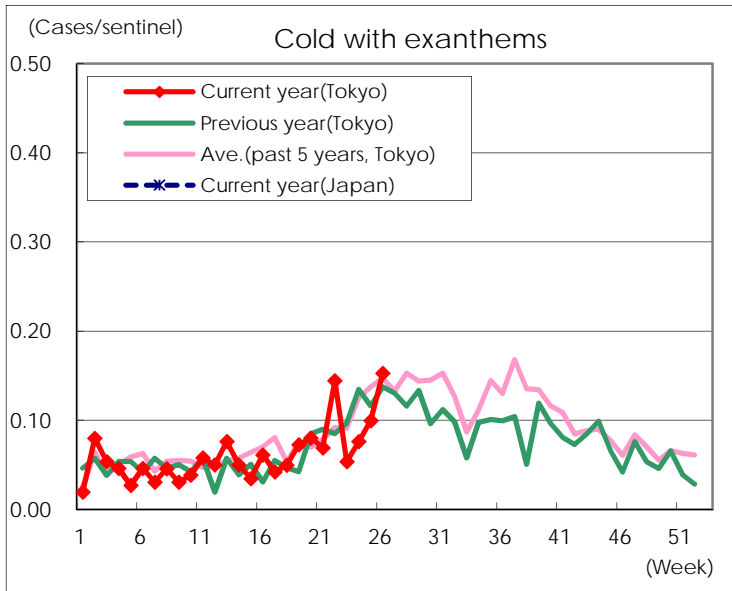
Diseases	Tokyo				
	23rd	24th	25th	26th	/sentinel
Respiratory syncytial virus infection	59	62	58	76	0.29
Pharyngoconjunctival fever	303	289	272	288	1.10
Group A streptococcal pharyngitis	879	958	858	826	3.15
Infectious gastroenteritis	1,841	1,920	1,794	1,633	6.23
Chickenpox	104	118	110	132	0.50
Hand, foot, and mouth disease	267	362	449	620	2.37
Erythema infectiosum	33	33	40	29	0.11
Exanthem subitum	168	174	192	176	0.67
Pertussis	3	4	9		
Herpangina	70	83	102	131	0.50
Mumps	59	63	76	82	0.31
Kawasaki disease	1	1	3	4	0.02
Cold with exanthems	14	20	26	40	0.15
Influenza	26	27	17	17	0.04
Acute hemorrhagic conjunctivitis					
Epidemic keratoconjunctivitis	44	23	22	31	0.79
Bacterial meningitis				2	0.08
Aseptic meningitis	1			2	0.08
Mycoplasma pneumonia		4	5	1	0.04
Chlamydial pneumonia (excluding psittacosis)	2	1	1	2	0.08
Infectious gastroenteritis (only by Rotavirus)	5	5	1		
Influenza-Associated Hospitalizations					

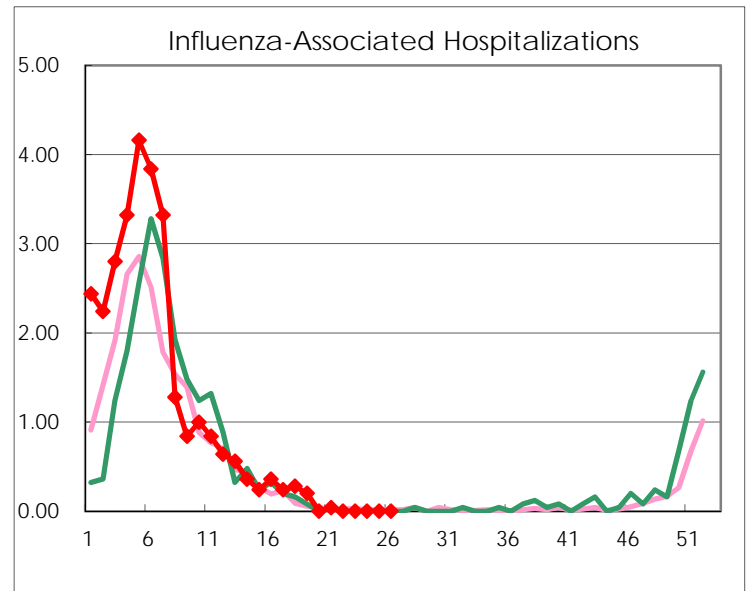
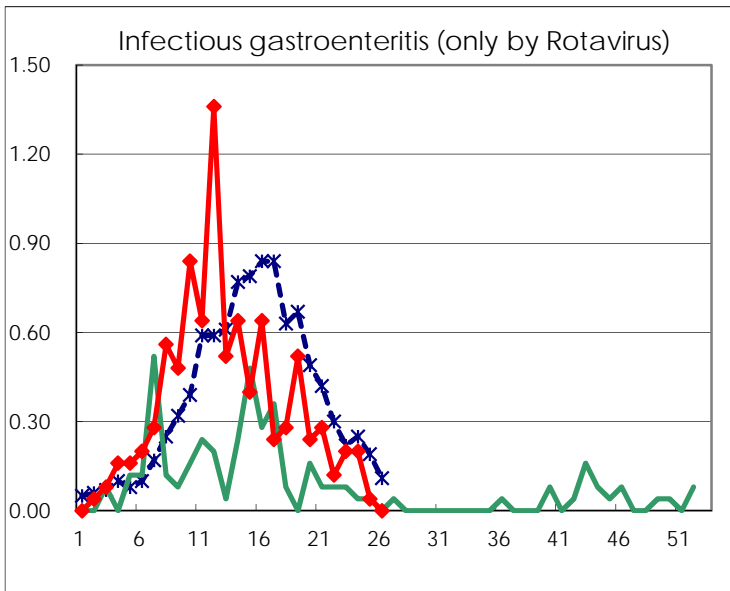
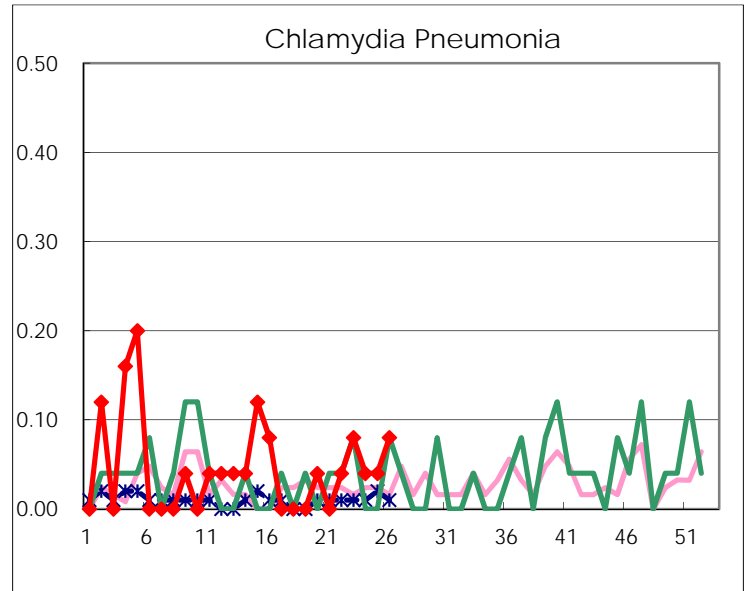
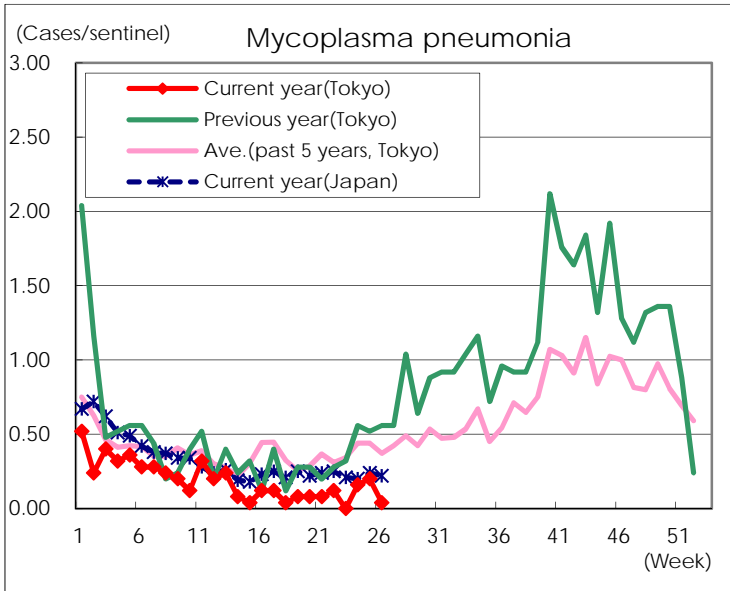
(Blank means 0.)

Disease Trend Graph (weekly reported cases per sentinel in comparison)









Number of sentinel facilities for weekly reporting		
Types of sentinels	Number of sentinels	Sentinels having reported
Pediatric	264	262
Influenza	419	413
Ophthalmic	39	39
Specially-designated	25	25