

**27 July 2017 / Number 29**

## Surveillance System in Tokyo, Japan

The infectious diseases which all physicians must report

All physicians must report to health centers the incidence of the diseases which are shown at page one. Health centers electronically report the individual cases to Tokyo Metropolitan Infectious Disease Surveillance Center.

The infectious diseases required to be reported by the sentinels

The numbers of patients who visit the sentinel clinics or hospitals during a week are reported to health centers in Tokyo. And they electronically report the numbers to Tokyo Metropolitan Infectious Disease Surveillance Center. We have about 500 sentinel clinics and hospitals in Tokyo.

Tokyo Metropolitan Institute of Public Health

TEL:81-3-3363-3213 FAX:81-3-5332-7365

e-mail:[www@tokyo-eiken.go.jp](mailto:www@tokyo-eiken.go.jp)

URL:[idsc.tokyo-eiken.go.jp/](http://idsc.tokyo-eiken.go.jp/)

---

Number of patients with the diseases which all physicians must report

Category	Diseases	Tokyo					Japan		
		26th	27th	28th	29th	Cum 2017	29th	Cum 2017	
I	Ebola hemorrhagic fever								
	Crimean-Congo hemorrhagic fever								
	Smallpox								
	South American hemorrhagic fever								
	Plague								
	Marburg disease								
	Lassa fever								
II	Acute poliomyelitis								
	Tuberculosis	70	55	70	40	1,853	278	12,278	
	Diphtheria								
	Severe Acute Respiratory Syndrome(SARS)								
	Middle East Respiratory Syndrome (MERS)								
	Avian influenza H5N1								
	Avian influenza H7N9								
III	Cholera					1	1	4	
	Shigellosis				2	21	5	85	
	Enterohemorrhagic Escherichia coli infection	4	7	9	9	88	82	1,024	
	Typhoid fever	2	1			6		22	
	Paratyphoid fever		1			4		8	
IV	Hepatitis E	1		1	1	38	2	191	
	West Nile fever								
	Hepatitis A	1	2			49	4	173	
	Echinococcosis			1		1	1	19	
	Yellow fever								
	Psittacosis							11	
	Omsk hemorrhagic fever								
	Relapsing fever		1			1		2	
	Kyasanur forest disease								
	Q fever								
	Rabies								
	Coccidioidomycosis								
	Monkeypox								
	Zika virus infection							1	
	Severe Fever with Thrombocytopenia Syndrome							1	51
	Hemorrhagic fever with renal syndrome								
	Western equine encephalitis								
	Tick-borne encephalitis								1
	Anthrax								
	Chikungunya fever		1				2		2
	Scrub typhus(Tsutsugamushi disease)						2	2	100
	Dengue fever	5	1	1	1	29	5	105	
	Eastern equine encephalitis								
	Avian influenza (excluding H5N1 and H7N9)								
	Nipah virus infection								
	Japanese spotted fever							4	118
	Japanese encephalitis								
	Hantavirus pulmonary syndrome								
	Herpes B virus infection								
	Glanders								
	Brucellosis								1
	Venezuelan equine encephalitis								
Hendra virus infection									
Epidemic typhus									
Botulism						1	1	3	
Malaria	1		2	1		10	1	24	
Tularemia									
Lyme disease			1			1	1	9	
Lyssavirus infection(excluding rabies)									
Rift valley fever									
Melioidosis						1		1	
Legionellosis	3	4	5	5	73	43	817		
Leptospirosis			2			3	1	7	
Rocky mountain spotted fever									

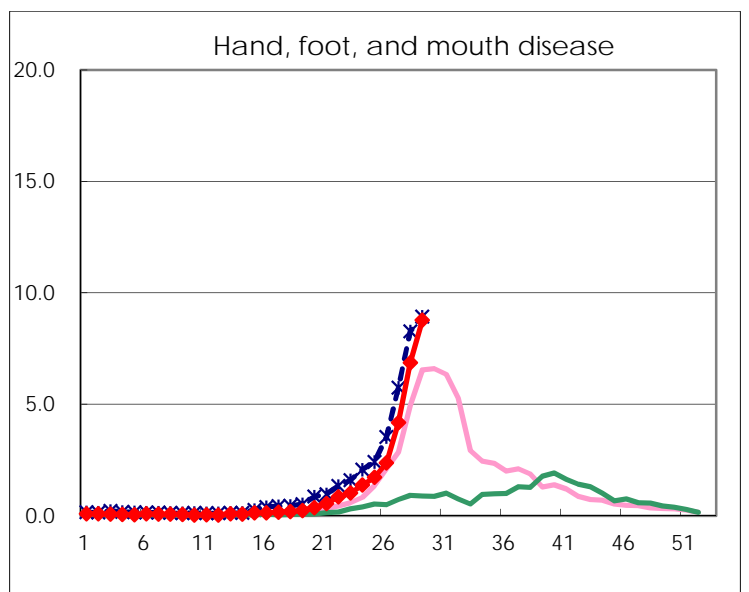
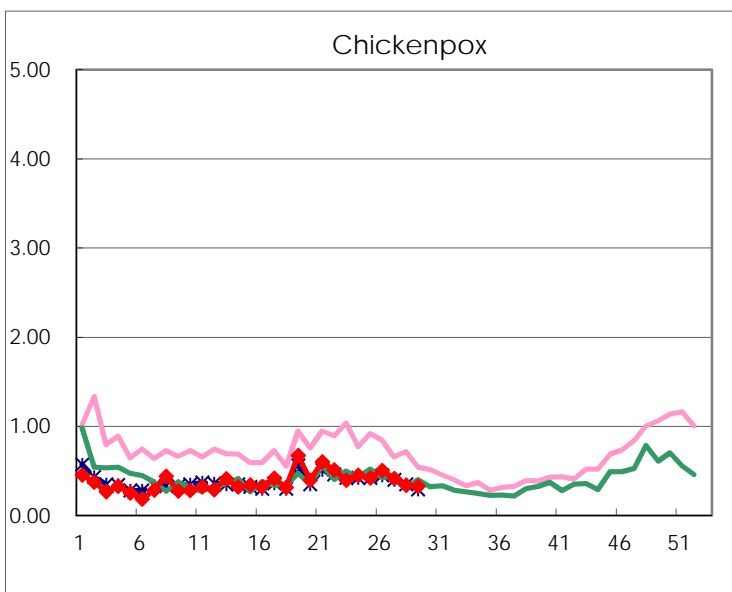
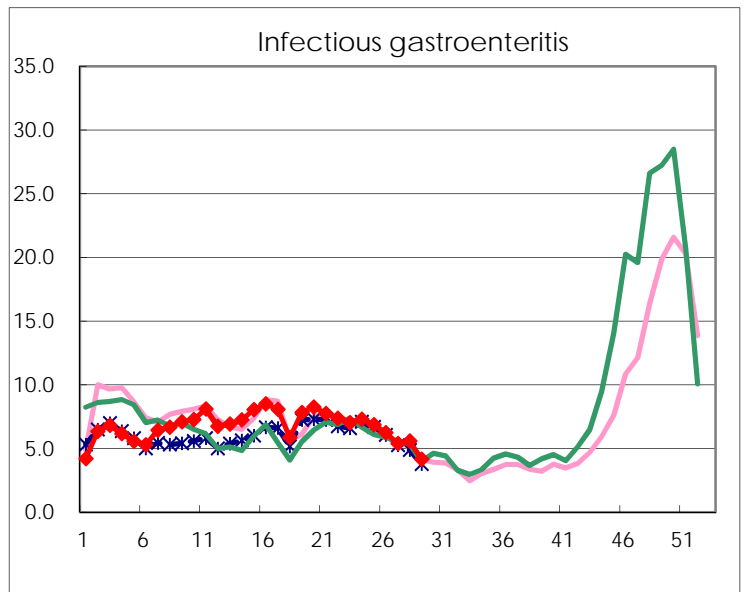
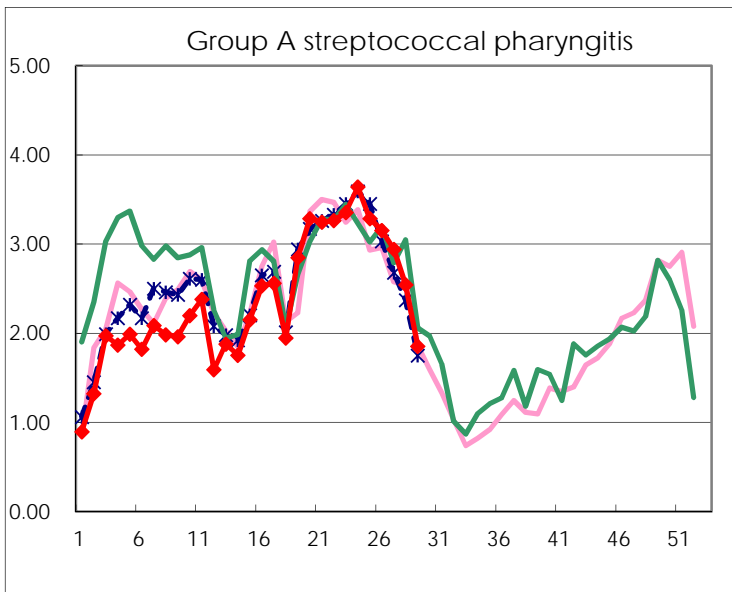
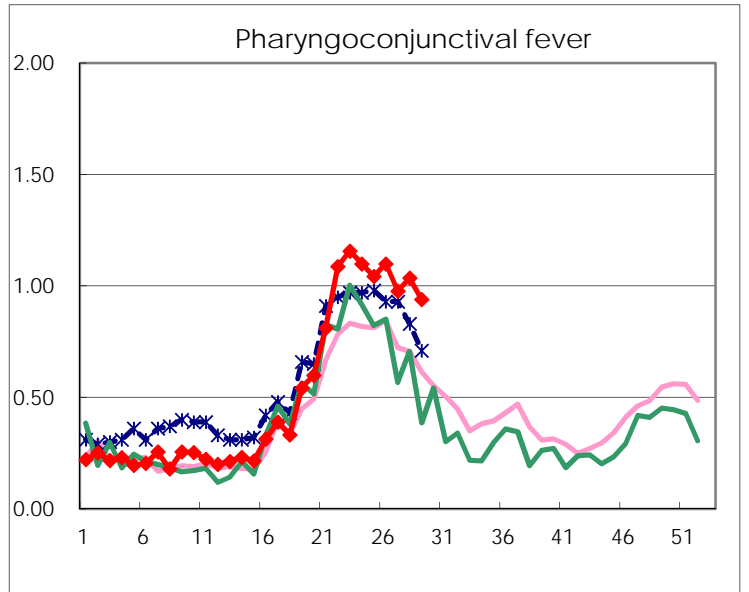
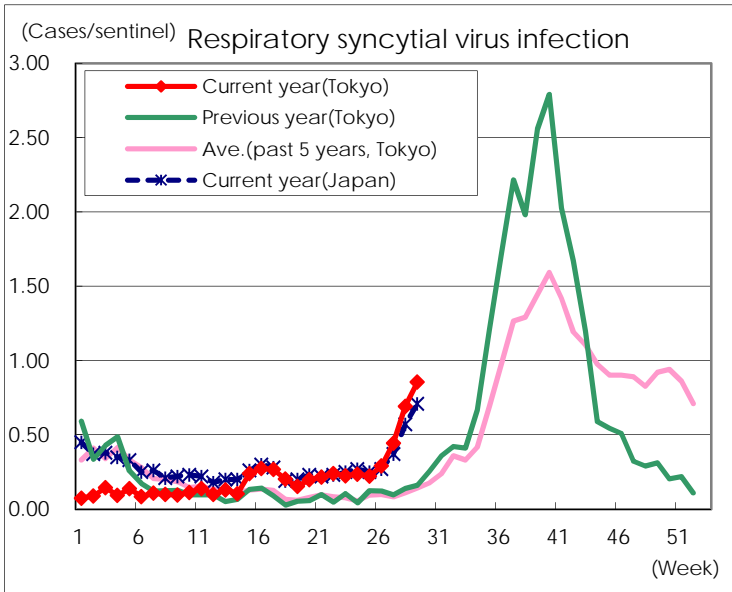
Category	Diseases	Tokyo					Japan	
		26th	27th	28th	29th	Cum 2017	29th	Cum 2017
V	Amebiasis	5	4	1	4	119	14	609
	Viral hepatitis(excluding hepatitis A and E)	2	1	2		33	3	162
	CRE infection	3	2	9	4	111	23	836
	Acute encephalitis(excluding JE and WNE)	2	3	1	1	39	6	404
	Cryptosporidiosis							7
	Creutzfeldt-Jakob disease	1			2	10	6	108
	Severe invasive streptococcal infections(TSLS)		3		1	48	2	325
	Acquired immunodeficiency syndrome (AIDS)	10	8	18	10	259	14	763
	Giardiasis					15		37
	Invasive <i>Haemophilus influenzae</i> disease		1	3	3	33	7	224
	Invasive meningococcal disease			1		3		16
	Invasive pneumococcal disease	10	3	8	2	279	24	2,095
	Varicella (limited to hospitalized case)	3	2	1	2	31	6	177
	Congenital rubella syndrome							
	Syphilis	49	39	35	27	949	53	2,990
	Disseminated cryptococcosis					10		77
	Tetanus					2	1	58
	Vancomycin-resistant <i>S. aureus</i> infection							
	Vancomycin-resistant Enterococcus infection		1			6		52
	Rubella		1	1		13		52
Measles			1		19		168	
MDRA infection					1		12	

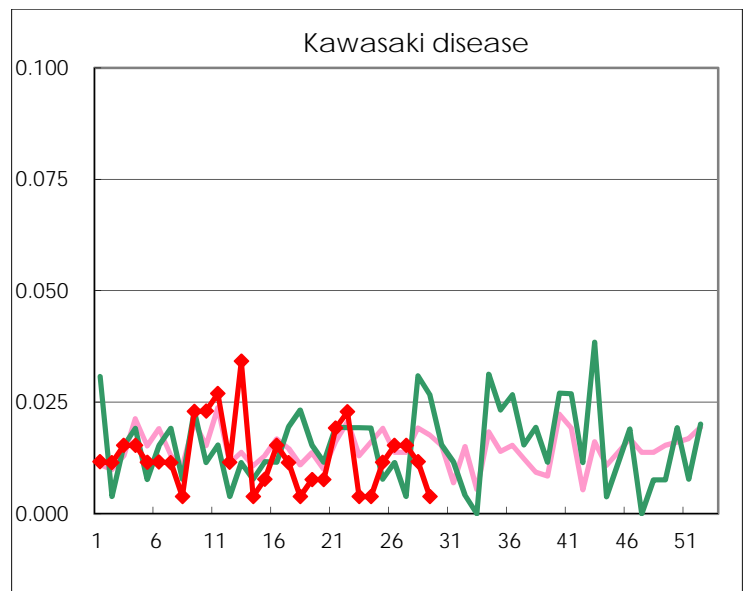
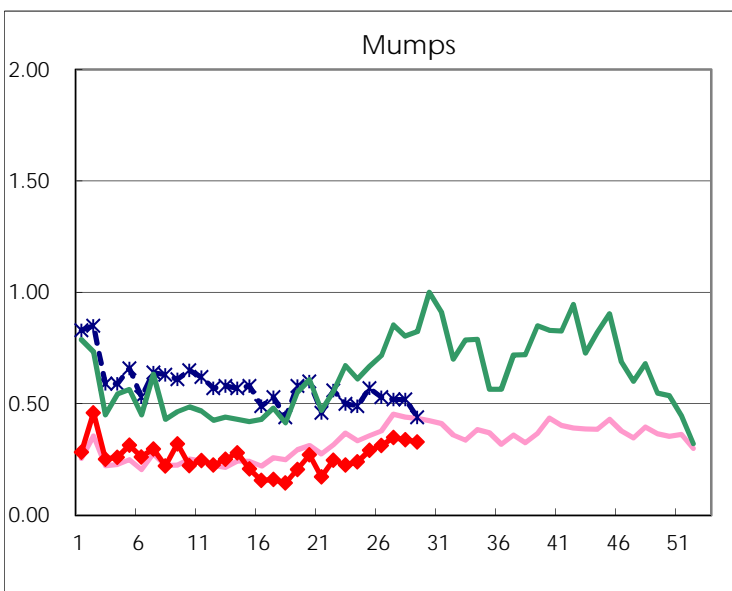
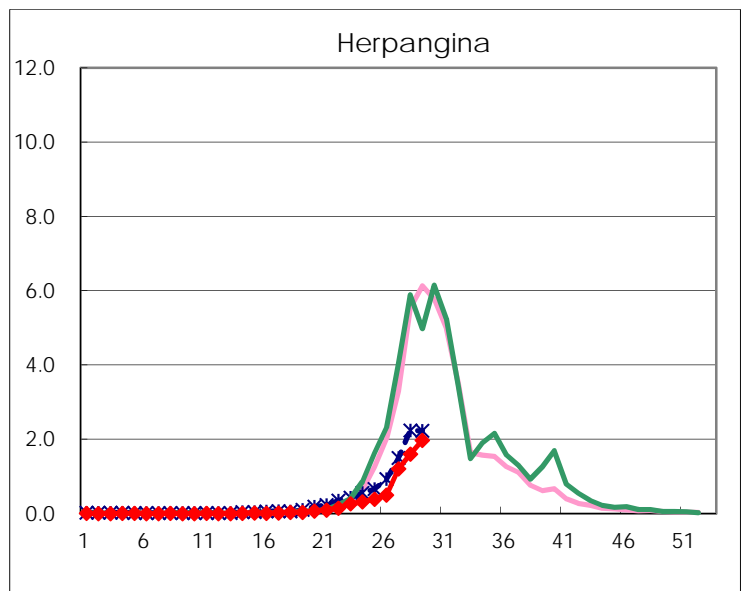
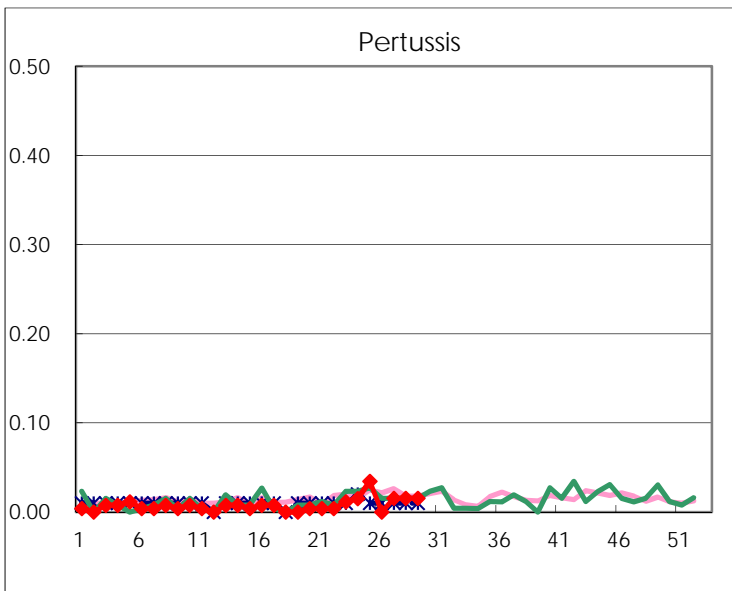
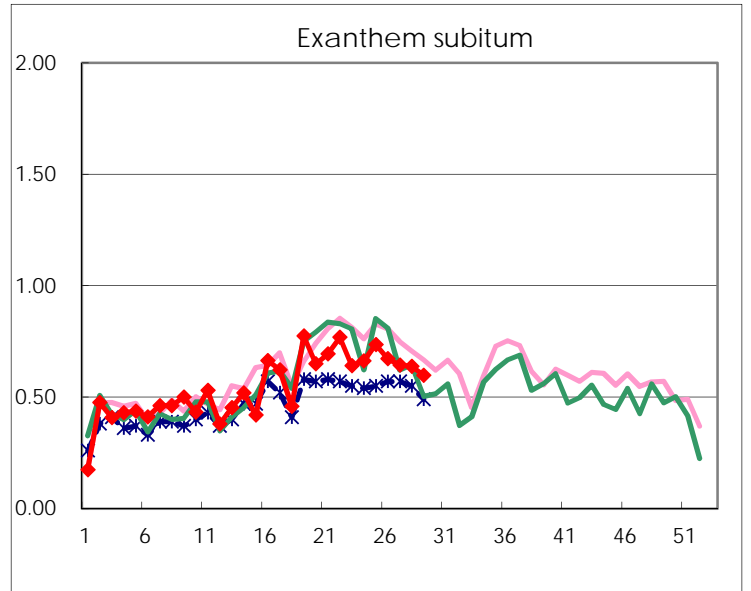
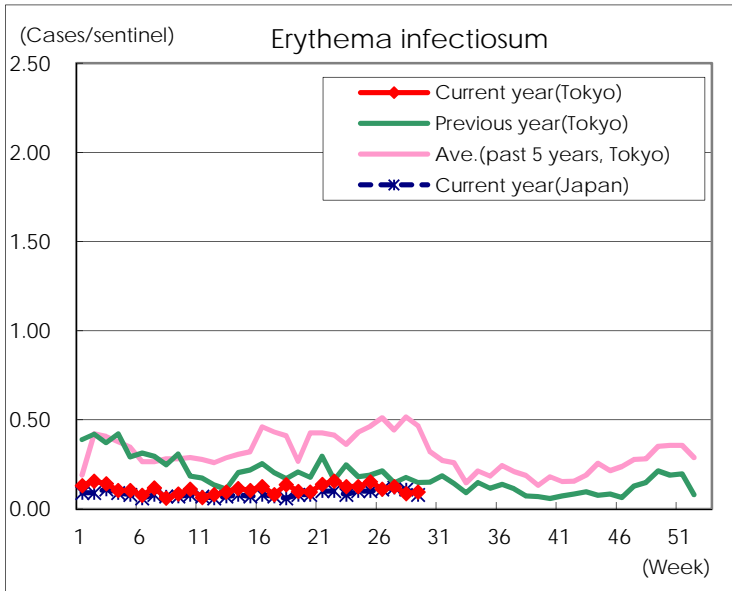
Number of patients with the diseases to be reported  
by the designated clinics and hospitals

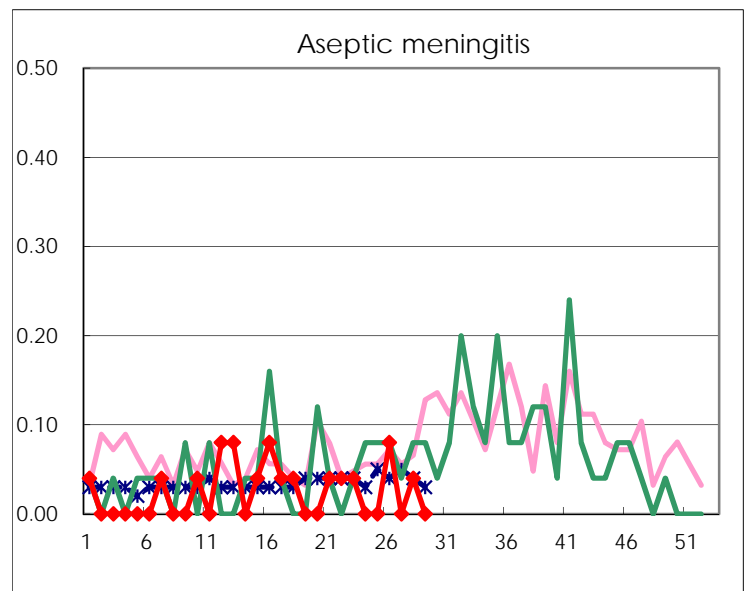
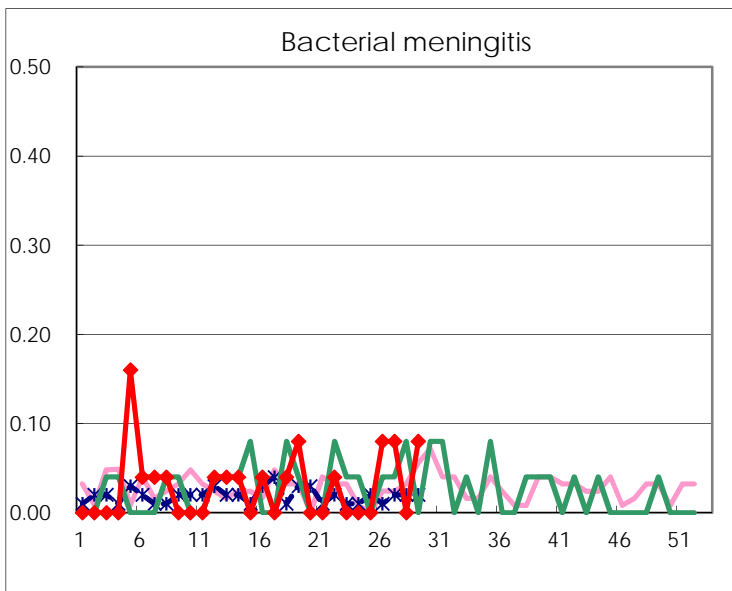
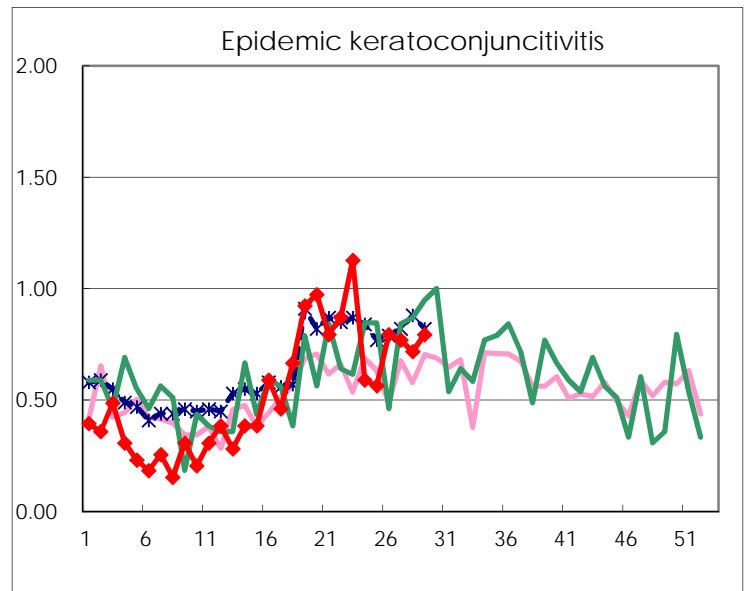
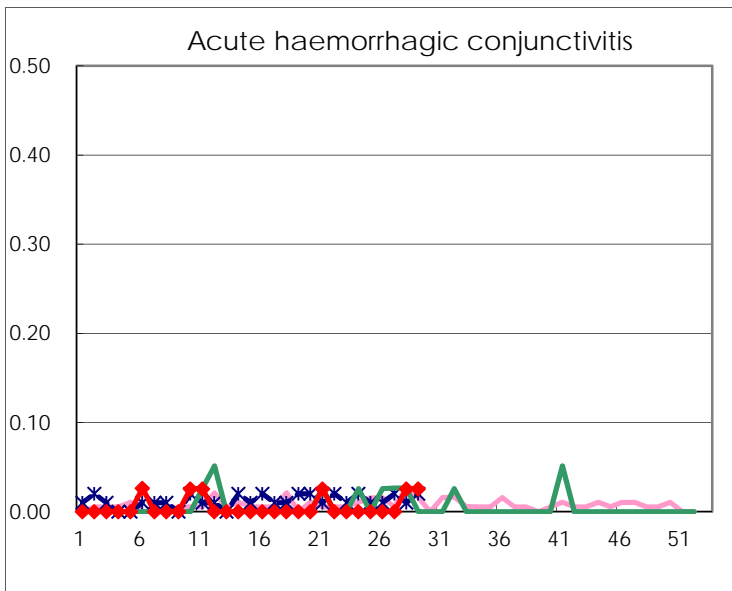
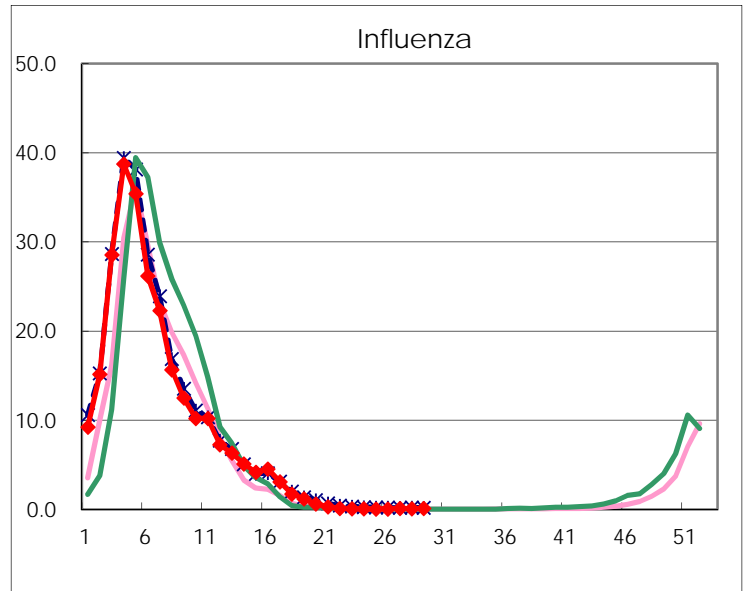
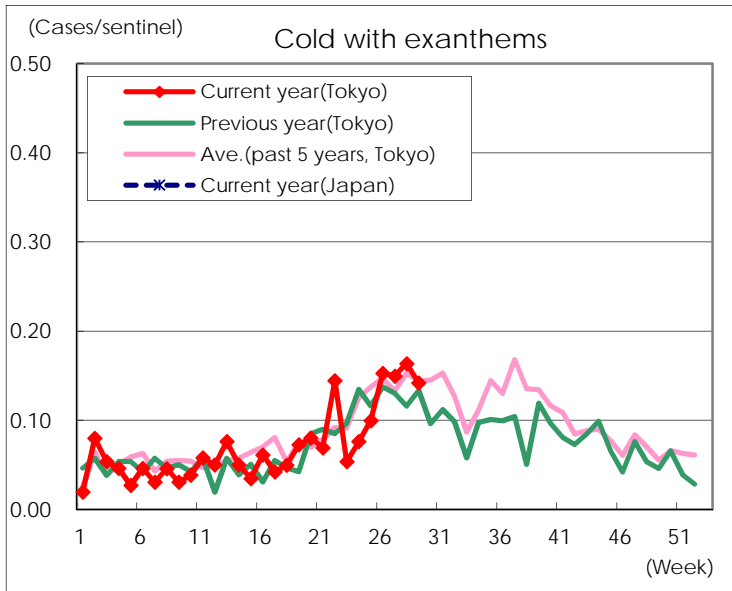
Diseases	Tokyo				
	26th	27th	28th	29th	/sentinel
Respiratory syncytial virus infection	76	116	178	223	0.85
Pharyngoconjunctival fever	288	255	266	245	0.94
Group A streptococcal pharyngitis	826	768	653	484	1.85
Infectious gastroenteritis	1,633	1,404	1,432	1,080	4.14
Chickenpox	132	108	87	85	0.33
Hand, foot, and mouth disease	620	1,090	1,764	2,290	8.77
Erythema infectiosum	29	33	22	25	0.10
Exanthem subitum	176	168	164	156	0.60
Pertussis		4	4	4	0.02
Herpangina	131	314	412	516	1.98
Mumps	82	91	87	86	0.33
Kawasaki disease	4	4	3	1	
Cold with exanthems	40	39	42	37	0.14
Influenza	17	45	31	38	0.09
Acute hemorrhagic conjunctivitis			1	1	0.03
Epidemic keratoconjunctivitis	31	30	28	31	0.79
Bacterial meningitis	2	2		2	0.08
Aseptic meningitis	2		1		
Mycoplasma pneumonia	1	6	4	2	0.08
Chlamydial pneumonia (excluding psittacosis)	2	1			
Infectious gastroenteritis (only by Rotavirus)			1		
Influenza-Associated Hospitalizations				2	0.08

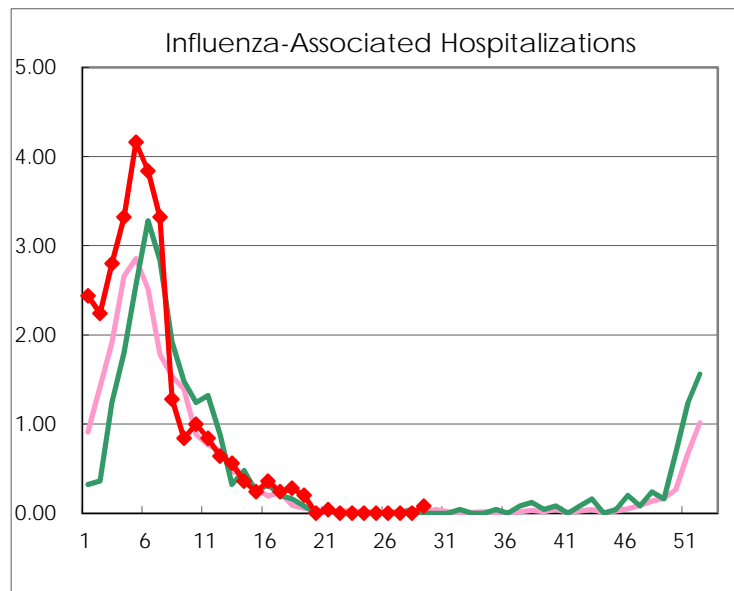
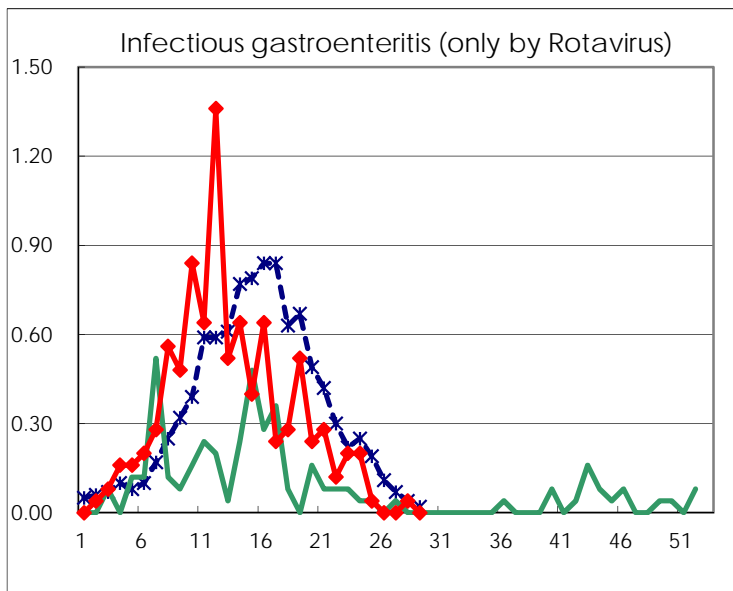
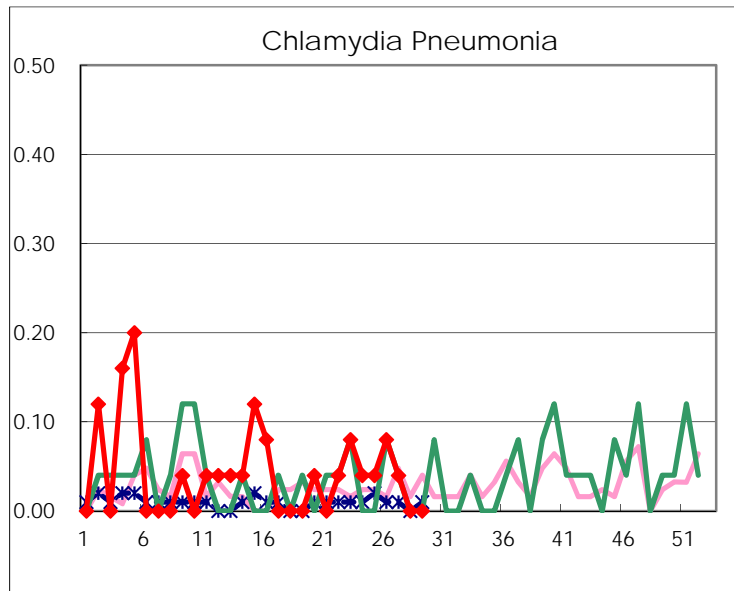
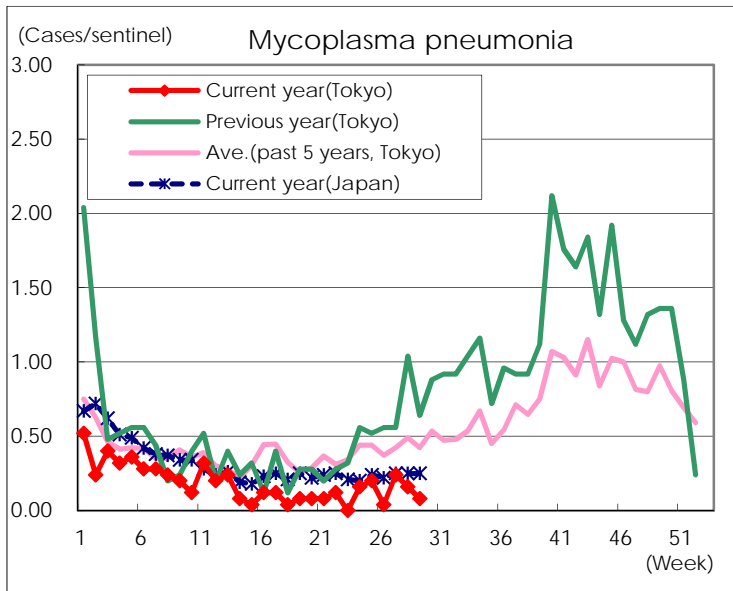
( Blank means 0. )

# Disease Trend Graph (weekly reported cases per sentinel in comparison)









Number of sentinel facilities for weekly reporting		
Types of sentinels	Number of sentinels	Sentinels having reported
Pediatric	264	261
Influenza	419	412
Ophthalmic	39	39
Specially-designated	25	25