

24 August 2017 / Number 33

Surveillance System in Tokyo, Japan

The infectious diseases which all physicians must report

All physicians must report to health centers the incidence of the diseases which are shown at page one. Health centers electronically report the individual cases to Tokyo Metropolitan Infectious Disease Surveillance Center.

The infectious diseases required to be reported by the sentinels

The numbers of patients who visit the sentinel clinics or hospitals during a week are reported to health centers in Tokyo. And they electronically report the numbers to Tokyo Metropolitan Infectious Disease Surveillance Center. We have about 500 sentinel clinics and hospitals in Tokyo.

Tokyo Metropolitan Institute of Public Health

TEL:81-3-3363-3213 FAX:81-3-5332-7365

e-mail:www@tokyo-eiken.go.jp

URL:idsc.tokyo-eiken.go.jp/

Number of patients with the diseases which all physicians must report

Category	Diseases	Tokyo					Japan	
		30th	31st	32nd	33rd	Cum 2017	33rd	Cum 2017
I	Ebola hemorrhagic fever							
	Crimean-Congo hemorrhagic fever							
	Smallpox							
	South American hemorrhagic fever							
	Plague							
	Marburg disease							
	Lassa fever							
II	Acute poliomyelitis							
	Tuberculosis	63	66	55	55	2,103	312	14,118
	Diphtheria							
	Severe Acute Respiratory Syndrome(SARS)							
	Middle East Respiratory Syndrome (MERS)							
	Avian influenza H5N1							
	Avian influenza H7N9							
III	Cholera					1		4
	Shigellosis	1	2			24	1	94
	Enterohemorrhagic Escherichia coli infection	19	18	58	71	254	291	1,995
	Typhoid fever			1		7		24
	Paratyphoid fever			1		5		10
IV	Hepatitis E		2	1		41	3	213
	West Nile fever							
	Hepatitis A		1		2	52	4	189
	Echinococcosis					1		19
	Yellow fever							
	Psittacosis							10
	Omsk hemorrhagic fever							
	Relapsing fever					1		3
	Kyasanur forest disease							
	Q fever							
	Rabies							
	Coccidioidomycosis		1			1		1
	Monkeypox							
	Zika virus infection							2
	Severe Fever with Thrombocytopenia Syndrome						3	66
	Hemorrhagic fever with renal syndrome							
	Western equine encephalitis							
	Tick-borne encephalitis							2
	Anthrax							
	Chikungunya fever					2		2
	Scrub typhus(Tsutsugamushi disease)		1			3	1	103
	Dengue fever	2	3	2	2	38	3	128
	Eastern equine encephalitis							
	Avian influenza (excluding H5N1 and H7N9)							
	Nipah virus infection							
	Japanese spotted fever						9	168
	Japanese encephalitis							
	Hantavirus pulmonary syndrome							
	Herpes B virus infection							
	Glanders							
	Brucellosis							1
	Venezuelan equine encephalitis							
Hendra virus infection								
Epidemic typhus								
Botulism					1		3	
Malaria	1		3		14	3	33	
Tularemia								
Lyme disease					1		14	
Lyssavirus infection(excluding rabies)								
Rift valley fever								
Melioidosis					1		1	
Legionellosis	4		7	4	88	42	993	
Leptospirosis					3		13	
Rocky mountain spotted fever								

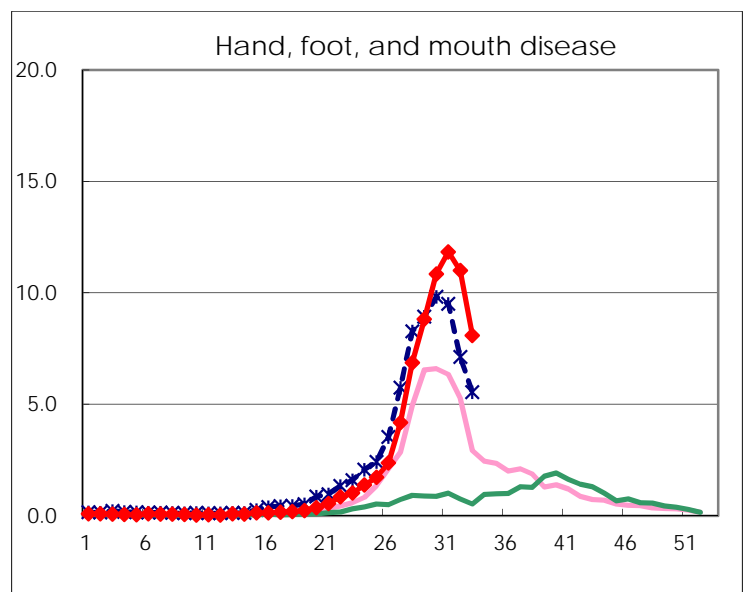
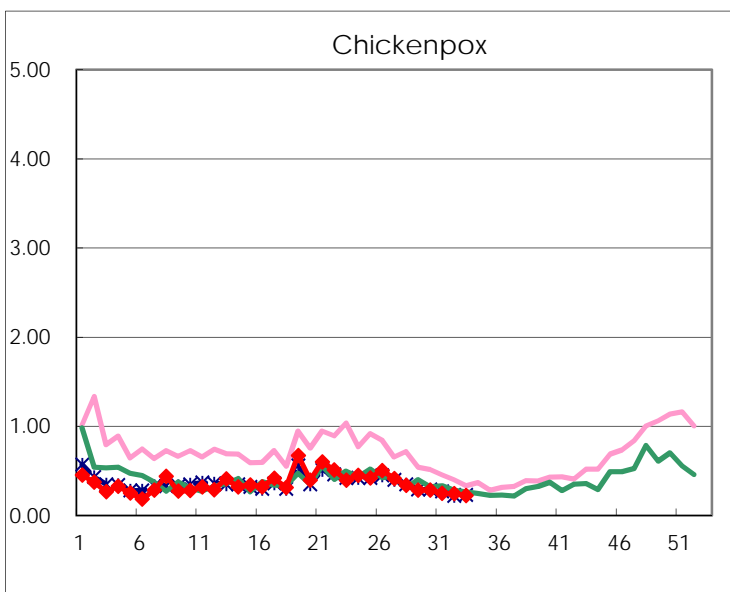
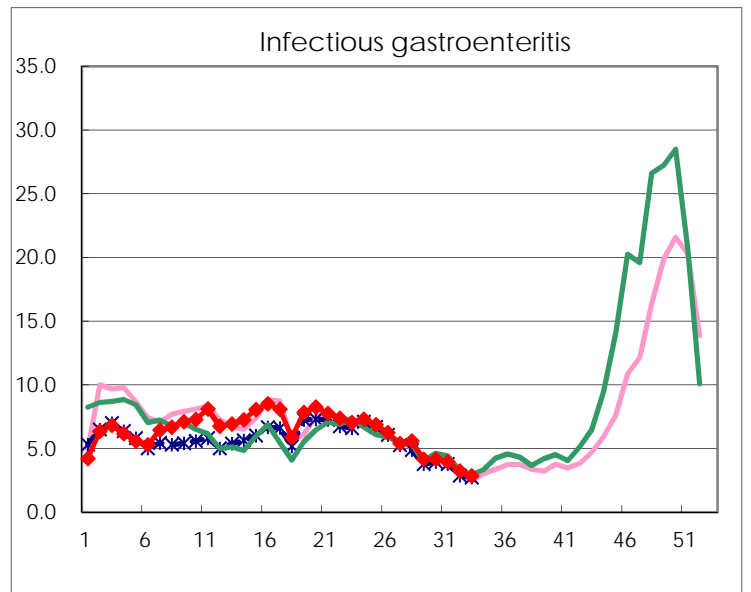
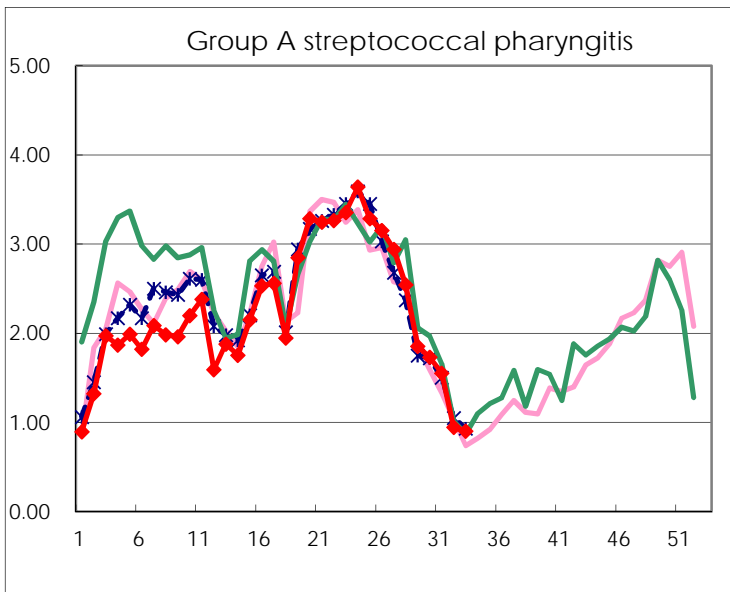
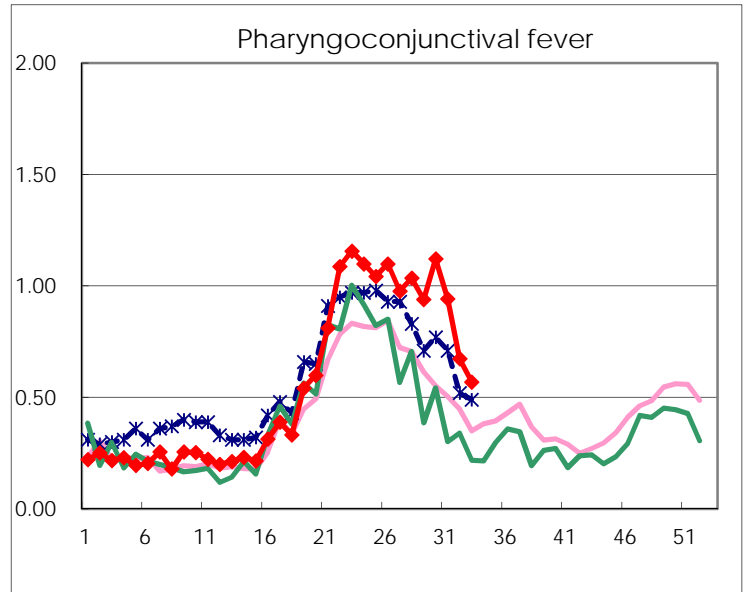
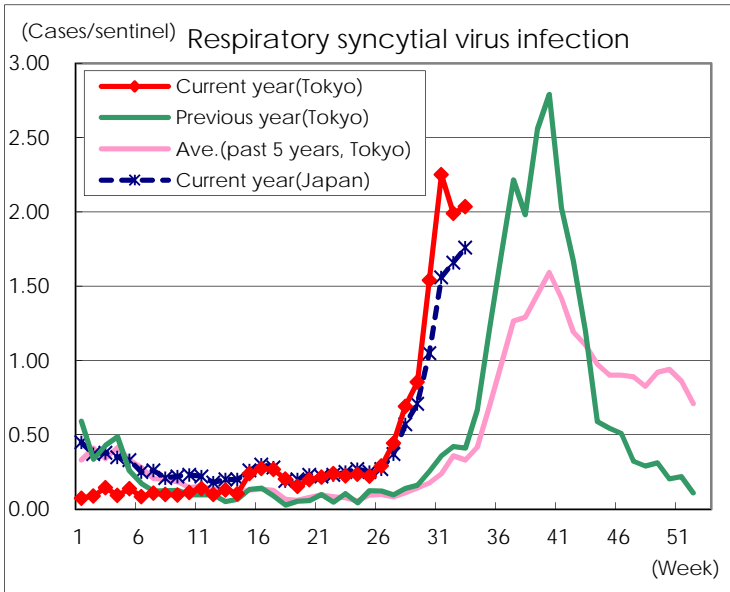
Category	Diseases	Tokyo					Japan	
		30th	31st	32nd	33rd	Cum 2017	33rd	Cum 2017
V	Amebiasis	7	1	3	4	134	10	675
	Viral hepatitis(excluding hepatitis A and E)	1	2	2	1	39	2	181
	CRE infection	5	6	3	5	130	32	985
	Acute encephalitis(excluding JE and WNE)	3	1	1		44	7	463
	Cryptosporidiosis							8
	Creutzfeldt-Jakob disease				2	12	4	127
	Severe invasive streptococcal infections(TSLS)	1	2		1	51	7	356
	Acquired immunodeficiency syndrome (AIDS)	15	7	9	10	300	18	877
	Giardiasis	1		1	1	18		40
	Invasive <i>Haemophilus influenzae</i> disease	1	2	1	1	38	7	254
	Invasive meningococcal disease					2		16
	Invasive pneumococcal disease	4	5	1	2	291	23	2,232
	Varicella (limited to hospitalized case)	1		1	2	35	3	198
	Congenital rubella syndrome							
	Syphilis	42	49	29	37	1,106	61	3,446
	Disseminated cryptococcosis					10	1	82
	Tetanus		1			3	4	75
	Vancomycin-resistant <i>S. aureus</i> infection							
	Vancomycin-resistant Enterococcus infection					6	1	55
	Rubella				2	15	2	60
Measles		1	3	3	26	4	176	
MDRA infection					1		15	

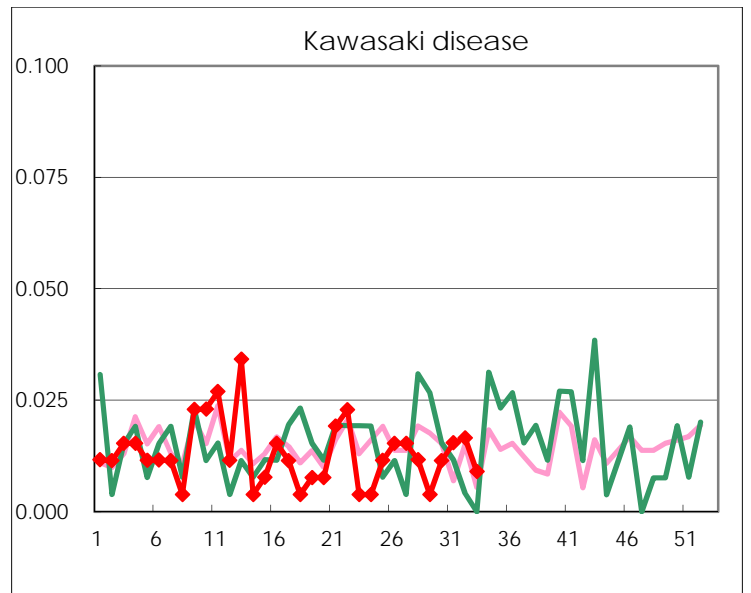
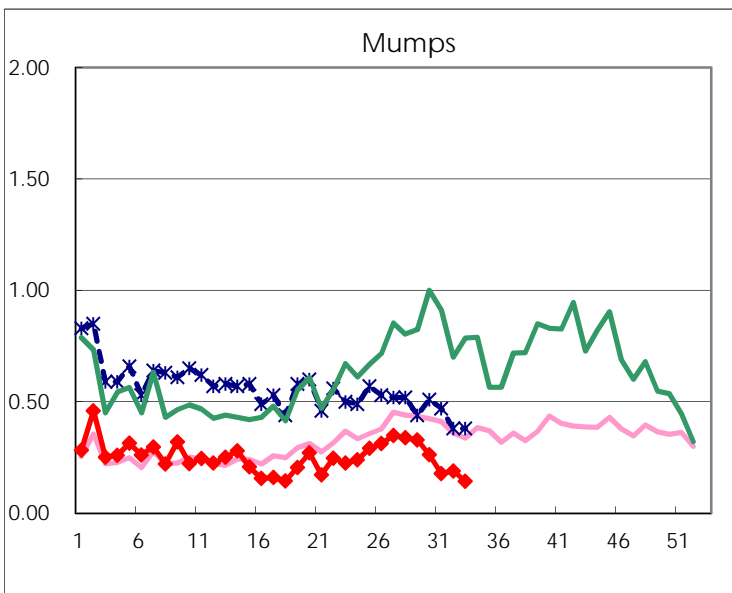
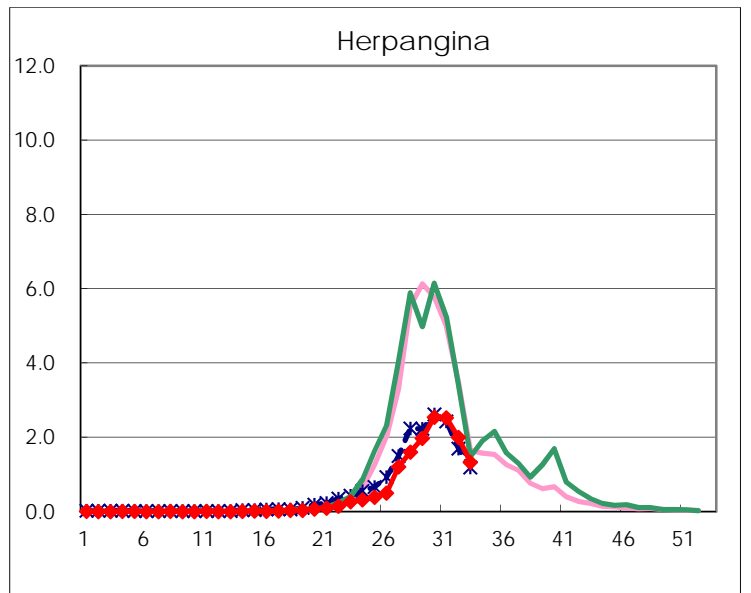
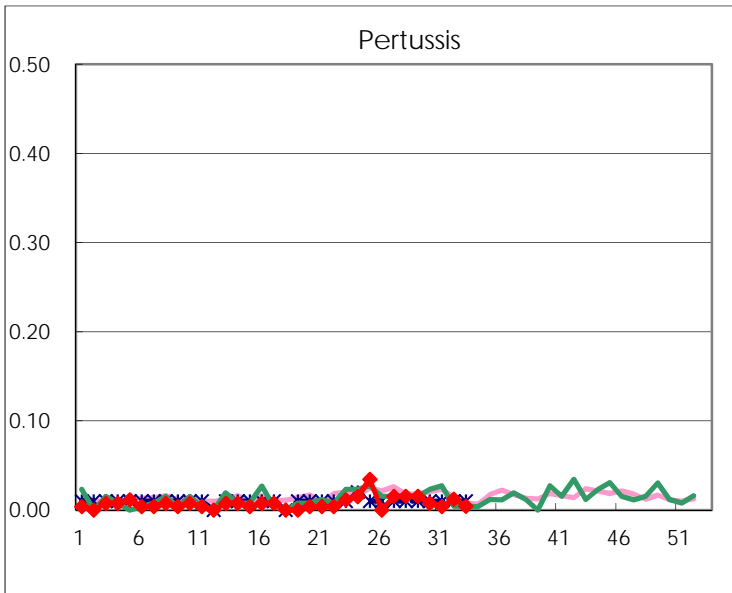
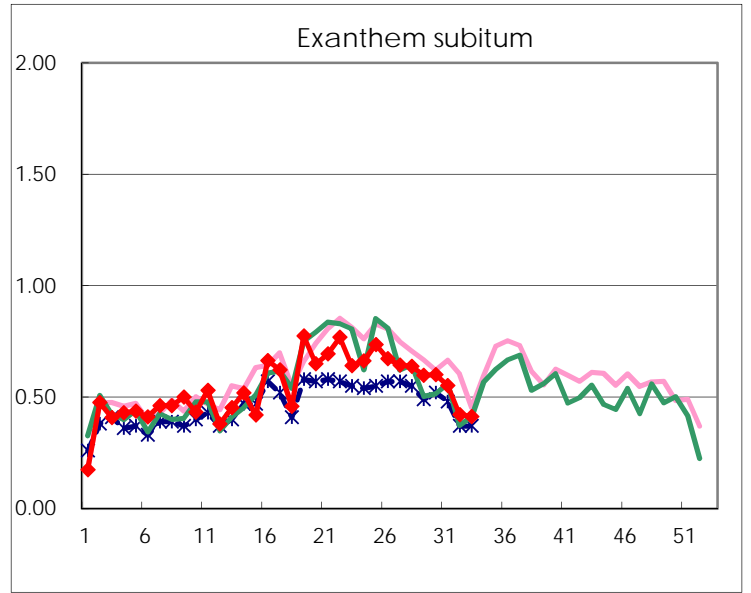
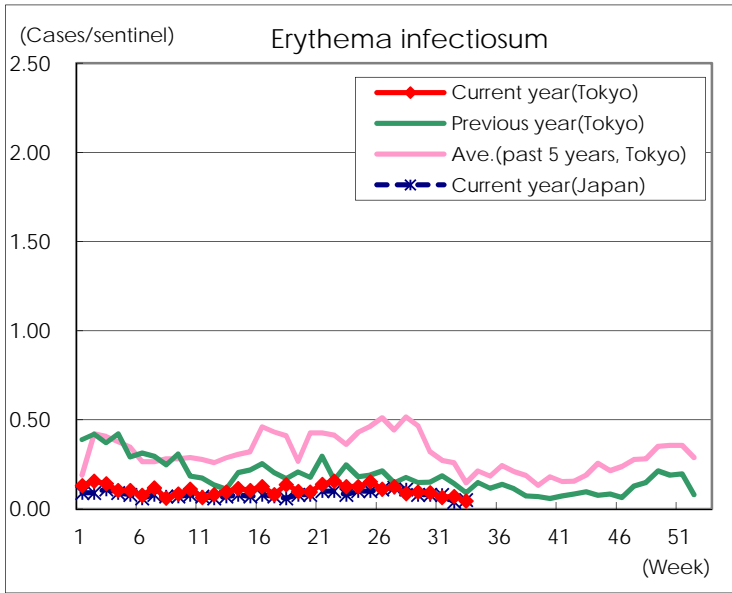
Number of patients with the diseases to be reported
by the designated clinics and hospitals

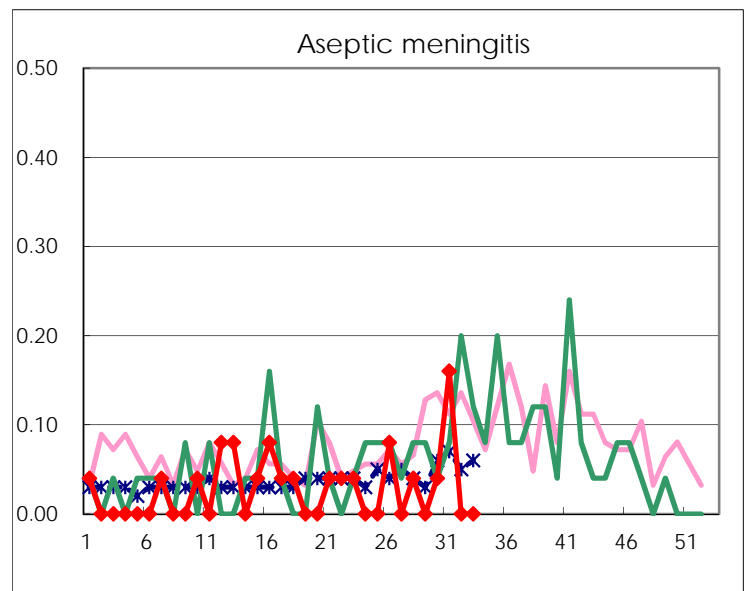
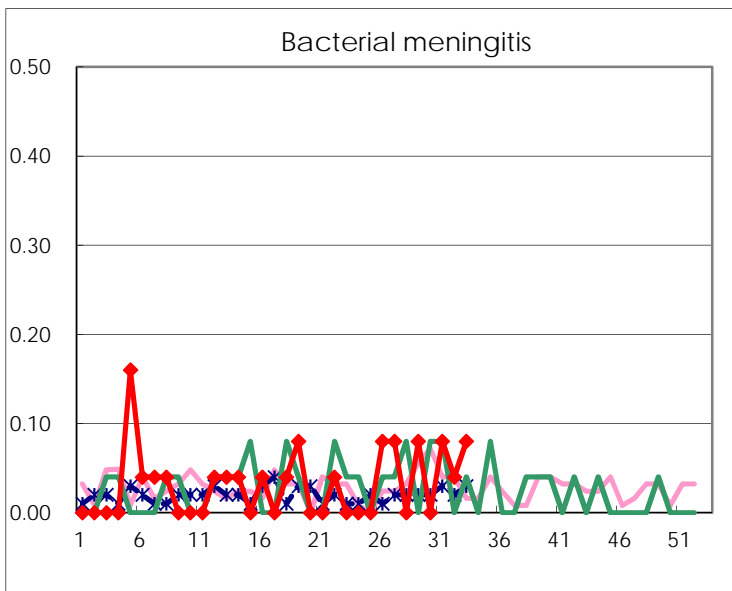
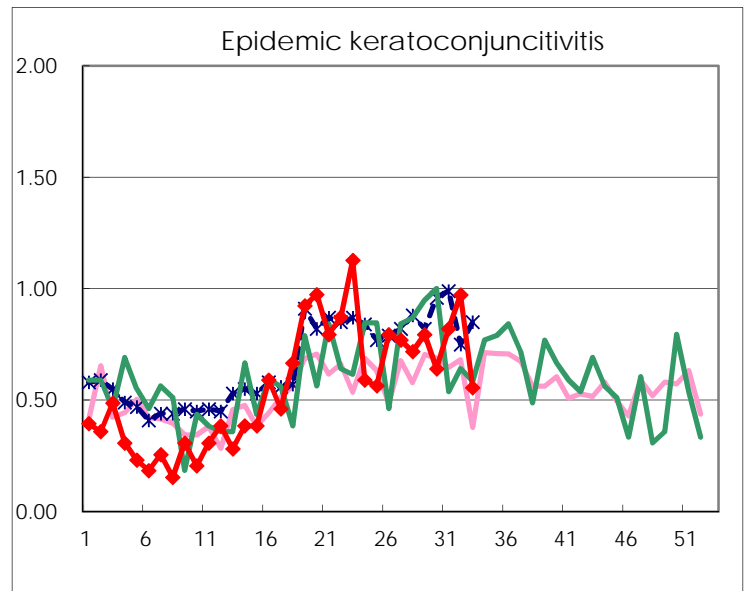
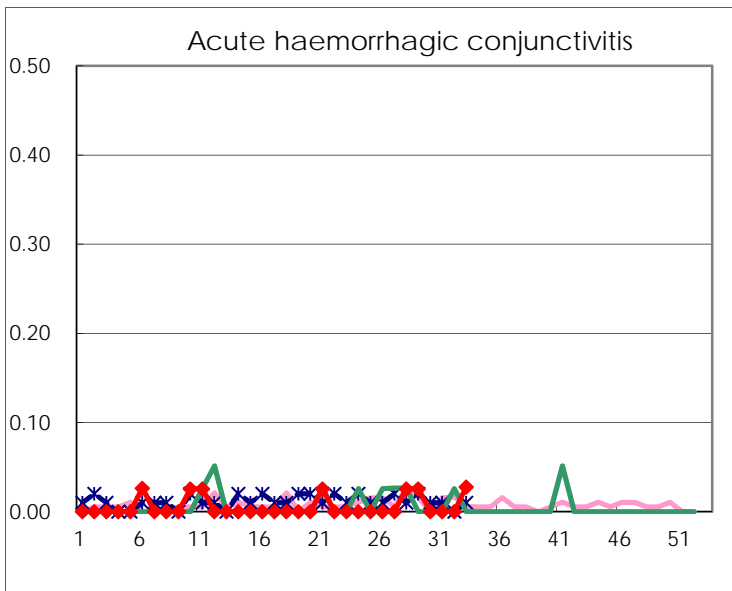
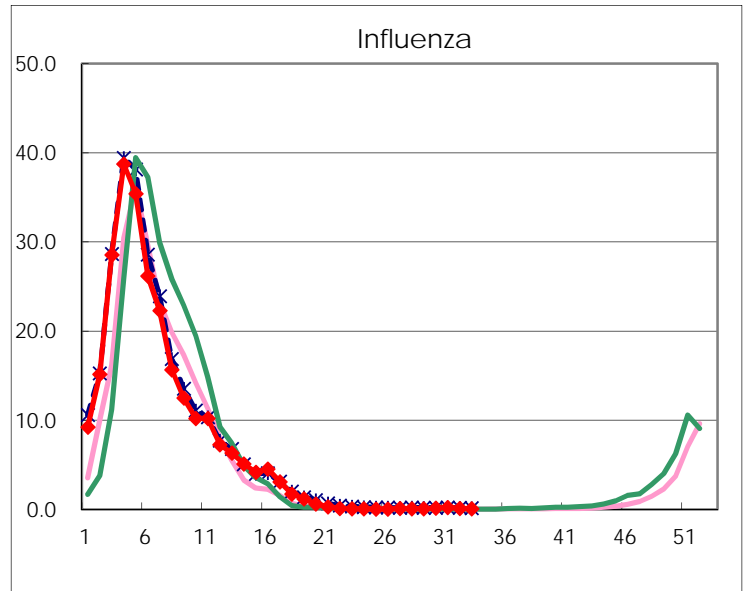
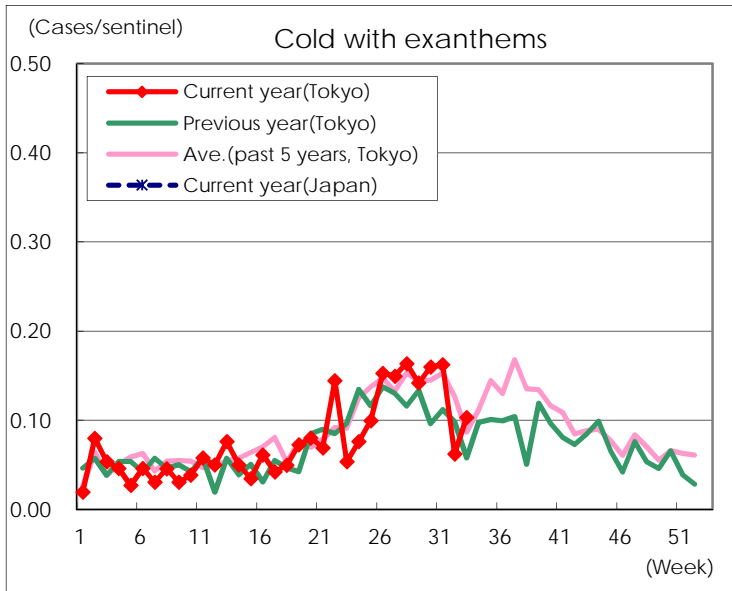
Diseases	Tokyo				
	30th	31st	32nd	33rd	/sentinel
Respiratory syncytial virus infection	405	583	482	454	2.04
Pharyngoconjunctival fever	295	244	163	127	0.57
Group A streptococcal pharyngitis	455	402	229	201	0.90
Infectious gastroenteritis	1,089	1,020	779	632	2.83
Chickenpox	75	64	59	50	0.22
Hand, foot, and mouth disease	2,853	3,066	2,661	1,804	8.09
Erythema infectiosum	24	17	17	10	0.04
Exanthem subitum	158	143	102	92	0.41
Pertussis	2	1	3	1	
Herpangina	669	653	483	296	1.33
Mumps	69	46	46	32	0.14
Kawasaki disease	3	4	4	2	0.01
Cold with exanthems	42	42	15	23	0.10
Influenza	60	95	36	29	0.08
Acute hemorrhagic conjunctivitis				1	0.03
Epidemic keratoconjunctivitis	25	32	36	20	0.56
Bacterial meningitis		2	1	2	0.08
Aseptic meningitis	1	4			
Mycoplasma pneumonia	3	2		3	0.12
Chlamydial pneumonia (excluding psittacosis)					
Infectious gastroenteritis (only by Rotavirus)				2	0.08
Influenza-Associated Hospitalizations	2	2	4	1	0.04

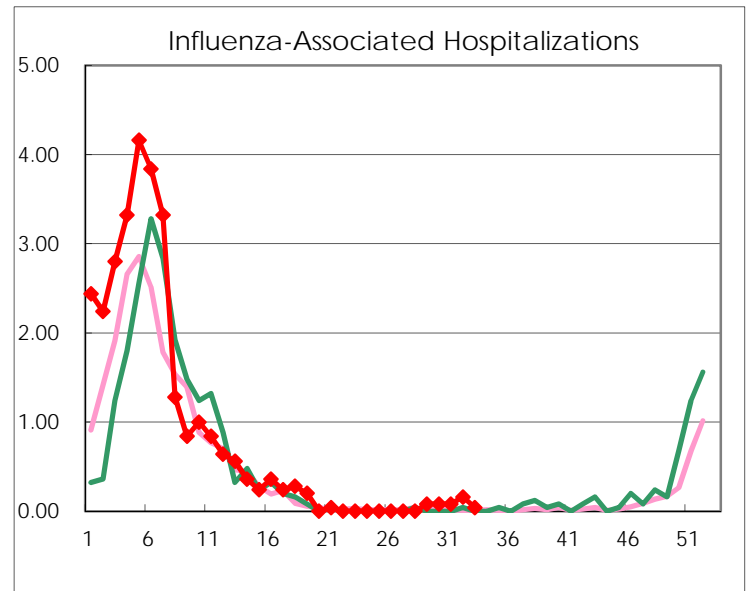
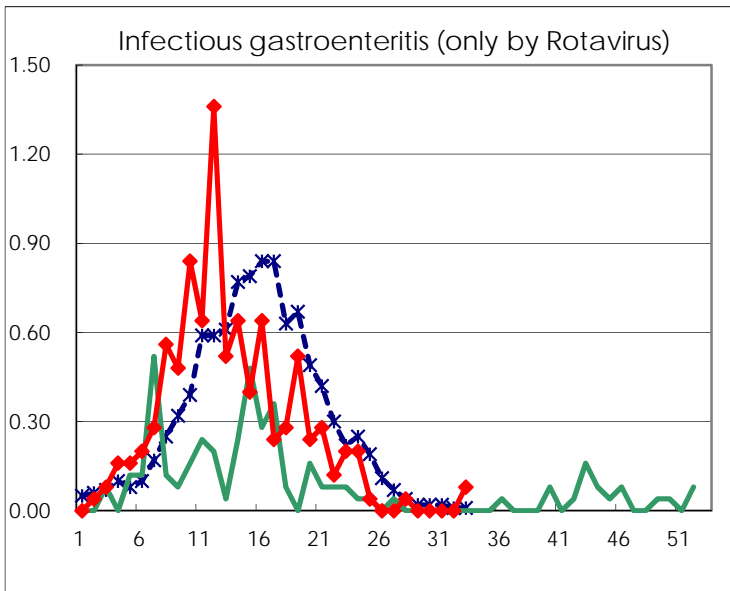
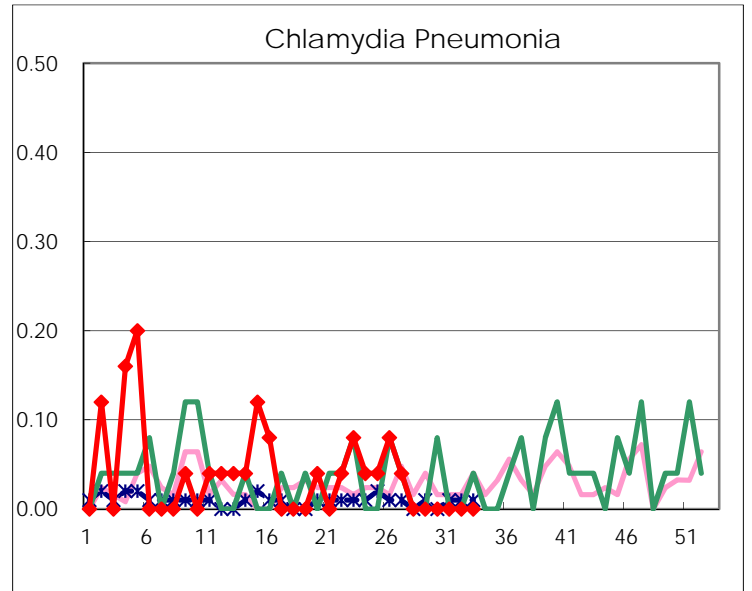
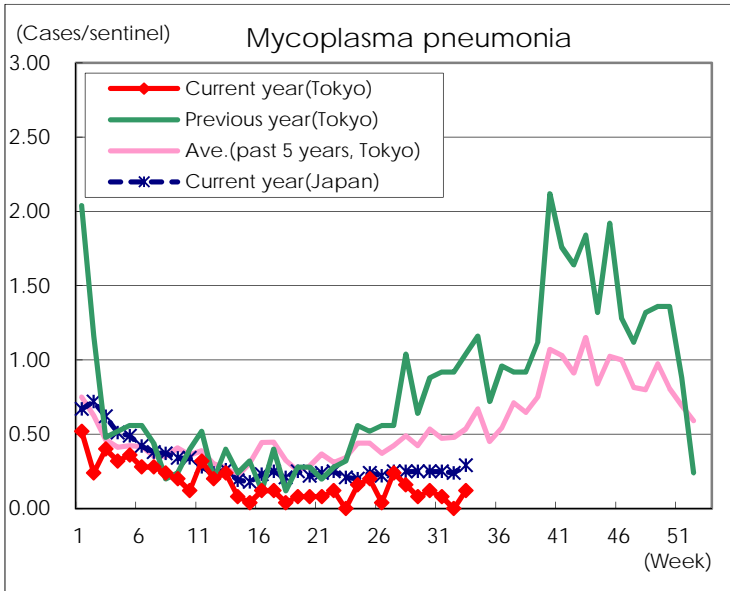
(Blank means 0.)

Disease Trend Graph (weekly reported cases per sentinel in comparison)









Number of sentinel facilities for weekly reporting		
Types of sentinels	Number of sentinels	Sentinels having reported
Pediatric	264	223
Influenza	419	373
Ophthalmic	39	36
Specially-designated	25	25