

## 7 September 2017 / Number 35

### Surveillance System in Tokyo, Japan

The infectious diseases which all physicians must report

All physicians must report to health centers the incidence of the diseases which are shown at page one. Health centers electronically report the individual cases to Tokyo Metropolitan Infectious Disease Surveillance Center.

The infectious diseases required to be reported by the sentinels

The numbers of patients who visit the sentinel clinics or hospitals during a week are reported to health centers in Tokyo. And they electronically report the numbers to Tokyo Metropolitan Infectious Disease Surveillance Center. We have about 500 sentinel clinics and hospitals in Tokyo.

Tokyo Metropolitan Institute of Public Health

TEL:81-3-3363-3213 FAX:81-3-5332-7365

e-mail:[www@tokyo-eiken.go.jp](mailto:www@tokyo-eiken.go.jp)

URL:[idsc.tokyo-eiken.go.jp/](http://idsc.tokyo-eiken.go.jp/)

---

Number of patients with the diseases which all physicians must report

Category	Diseases	Tokyo					Japan	
		32nd	33rd	34th	35th	Cum 2017	35th	Cum 2017
I	Ebola hemorrhagic fever							
	Crimean-Congo hemorrhagic fever							
	Smallpox							
	South American hemorrhagic fever							
	Plague							
	Marburg disease							
II	Lassa fever							
	Acute poliomyelitis							
	Tuberculosis	57	61	56	68	2,239	371	15,041
	Diphtheria							
	Severe Acute Respiratory Syndrome(SARS)							
	Middle East Respiratory Syndrome (MERS)							
III	Avian influenza H5N1							
	Avian influenza H7N9							
	Cholera					1		4
	Shigellosis				2	26	3	101
	Enterohemorrhagic Escherichia coli infection	58	73	37	34	327	210	2,568
	Typhoid fever	1				7		25
IV	Paratyphoid fever	1				5	1	11
	Hepatitis E	1		2	2	45	7	230
	West Nile fever							
	Hepatitis A		2			52	4	198
	Echinococcosis					1		19
	Yellow fever							
	Psittacosis							10
	Omsk hemorrhagic fever							
	Relapsing fever					1		3
	Kyasanur forest disease							
	Q fever							
	Rabies							
	Coccidioidomycosis					1		1
	Monkeypox							
	Zika virus infection							2
	Severe Fever with Thrombocytopenia Syndrome						3	72
	Hemorrhagic fever with renal syndrome							
	Western equine encephalitis							
	Tick-borne encephalitis							2
	Anthrax							
	Chikungunya fever					2		2
	Scrub typhus(Tsutsugamushi disease)					3	1	105
	Dengue fever	2	2	5	2	45	10	157
	Eastern equine encephalitis							
	Avian influenza (excluding H5N1 and H7N9)							
	Nipah virus infection							
	Japanese spotted fever			1		1	6	190
	Japanese encephalitis							
	Hantavirus pulmonary syndrome							
	Herpes B virus infection							
	Glanders							
	Brucellosis							2
Venezuelan equine encephalitis								
Hendra virus infection								
Epidemic typhus								
Botulism					1		3	
Malaria	3		1	3	18	2	37	
Tularemia								
Lyme disease					1		14	
Lyssavirus infection(excluding rabies)								
Rift valley fever								
Melioidosis					1		1	
Legionellosis	7	4	6	5	99	52	1,094	
Leptospirosis					3	1	16	
Rocky mountain spotted fever								

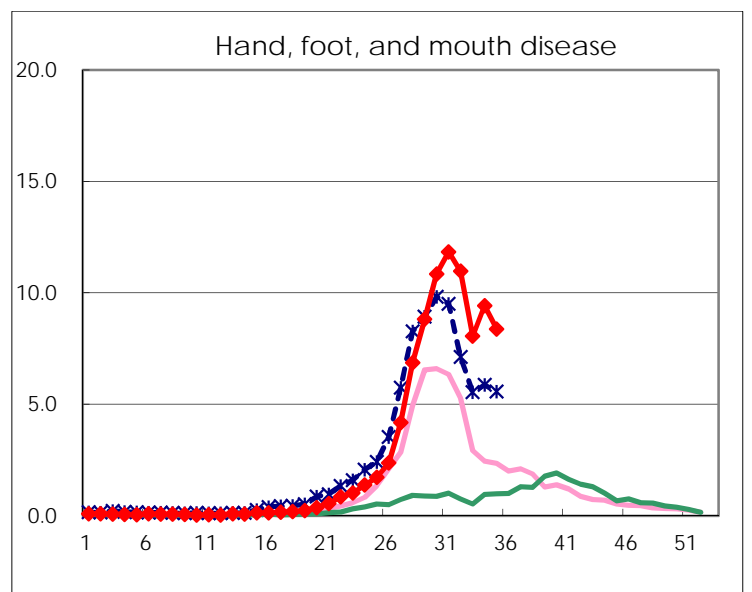
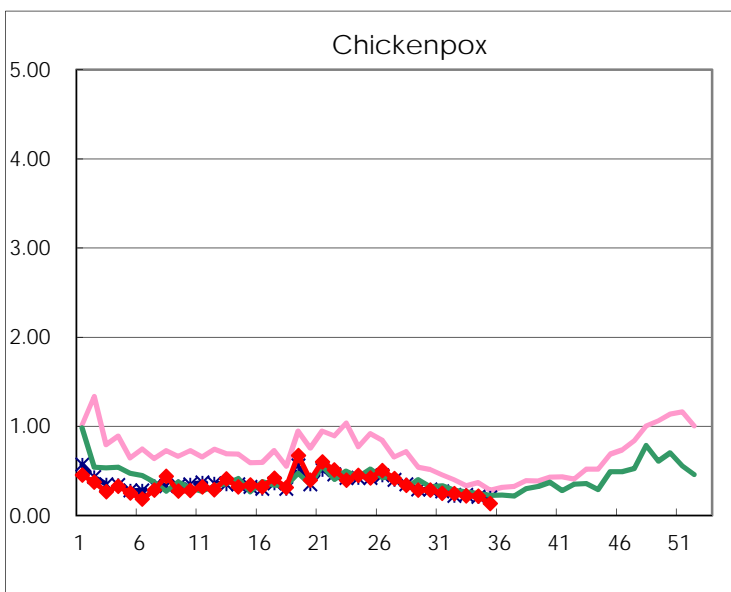
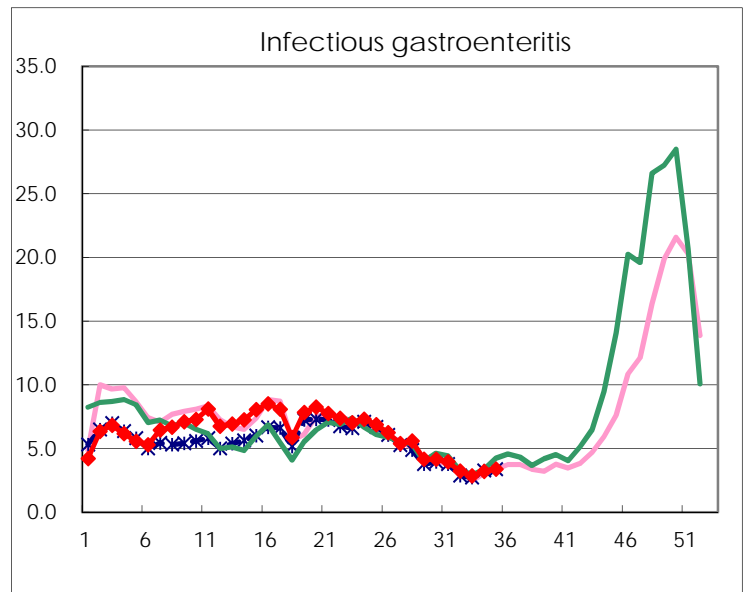
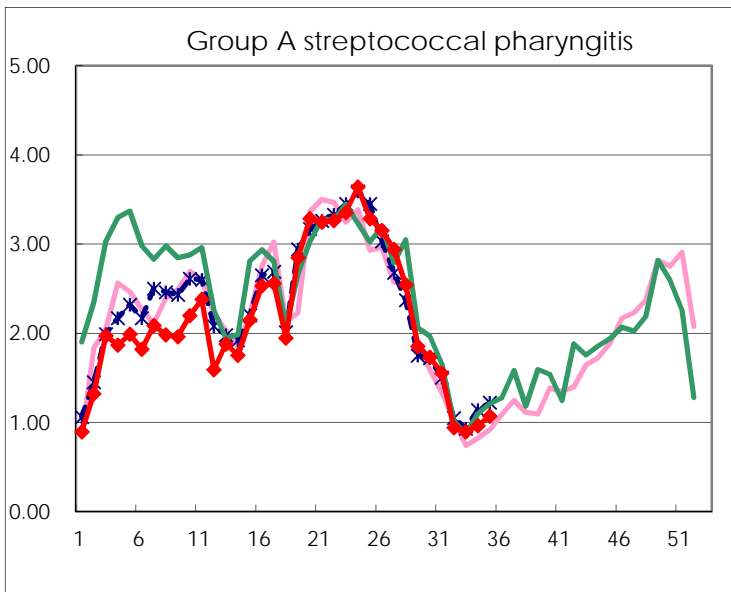
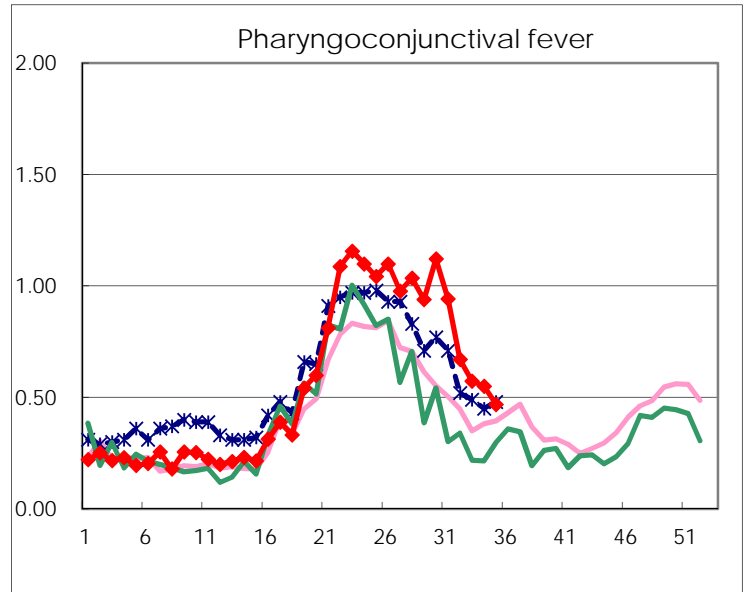
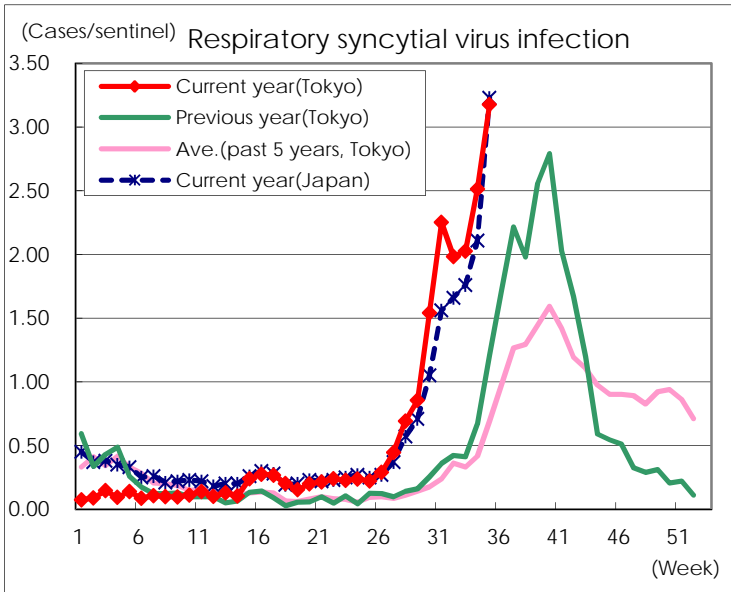
Category	Diseases	Tokyo					Japan	
		32nd	33rd	34th	35th	Cum 2017	35th	Cum 2017
V	Amebiasis	3	4	2	2	138	13	715
	Viral hepatitis(excluding hepatitis A and E)	2	1	2	3	44	4	197
	CRE infection	3	5	4	5	139	28	1,061
	Acute encephalitis(excluding JE and WNE)	1		3	1	48	8	491
	Cryptosporidiosis							8
	Creutzfeldt-Jakob disease		2	1		13	1	136
	Severe invasive streptococcal infections(TSLS)		1		1	52	2	383
	Acquired immunodeficiency syndrome (AIDS)	9	10	12	10	322	10	930
	Giardiasis	1	1	1		19		42
	Invasive <i>Haemophilus influenzae</i> disease	1	1	1	1	40	1	263
	Invasive meningococcal disease					2	2	19
	Invasive pneumococcal disease	1	2	2	2	295	19	2,301
	Varicella (limited to hospitalized case)	1	2	1	1	37	1	206
	Congenital rubella syndrome							
	Syphilis	29	39	44	55	1,206	103	3,728
	Disseminated cryptococcosis					10	1	88
	Tetanus					3	2	83
	Vancomycin-resistant <i>S. aureus</i> infection							
	Vancomycin-resistant Enterococcus infection				1	7	1	56
	Rubella		2		1	16	2	63
Measles	3	3			26		176	
MDRA infection			1		2		16	

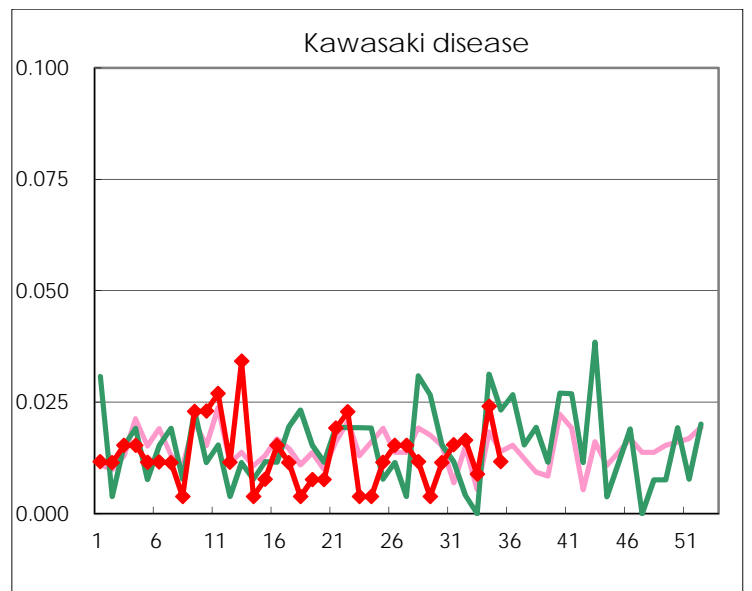
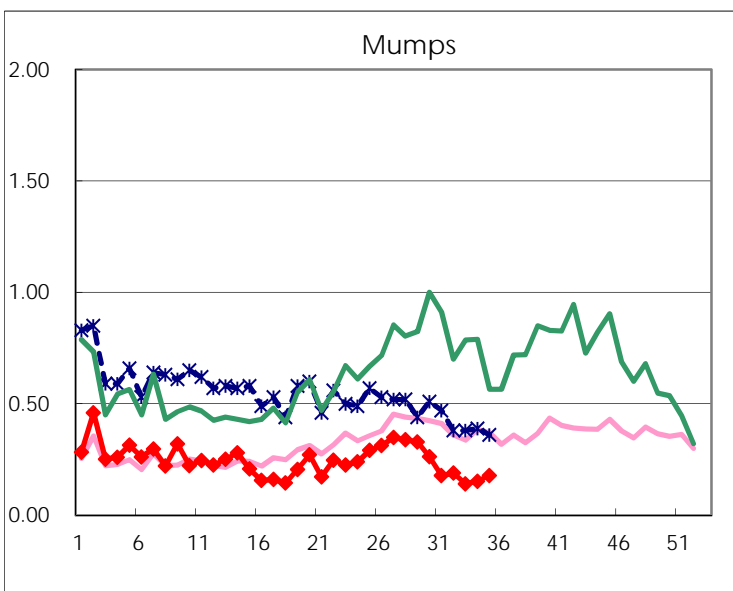
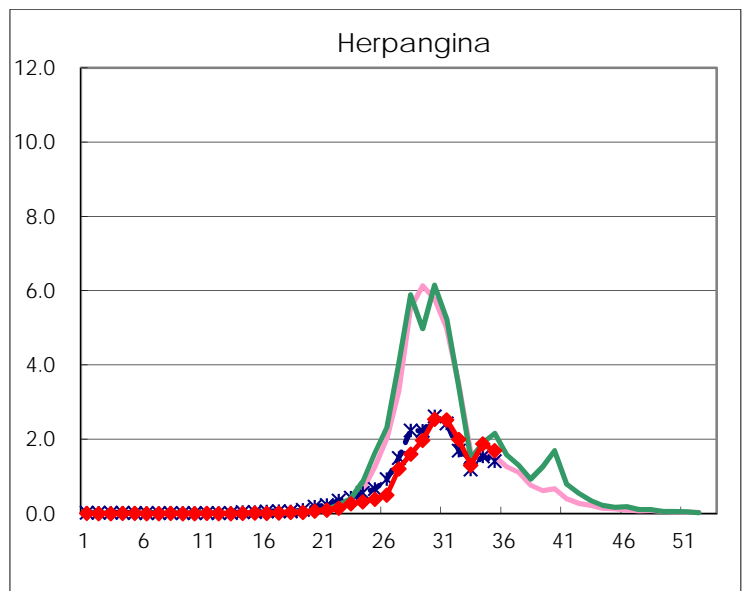
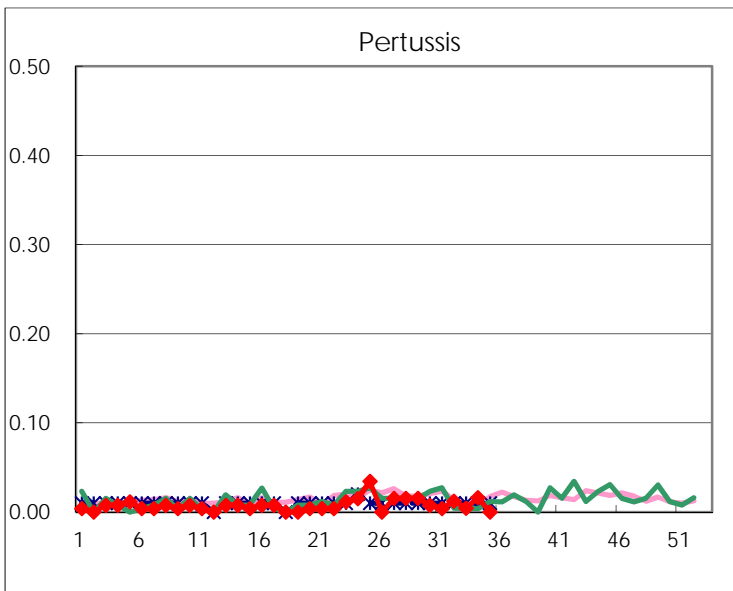
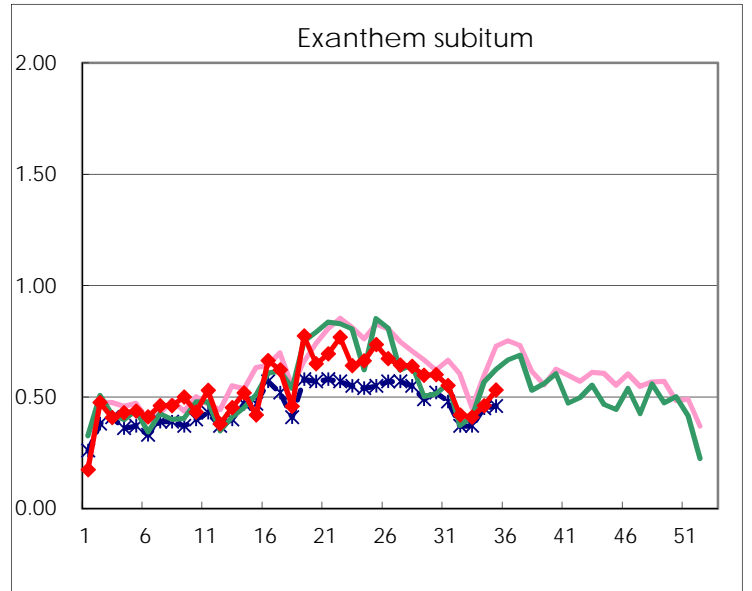
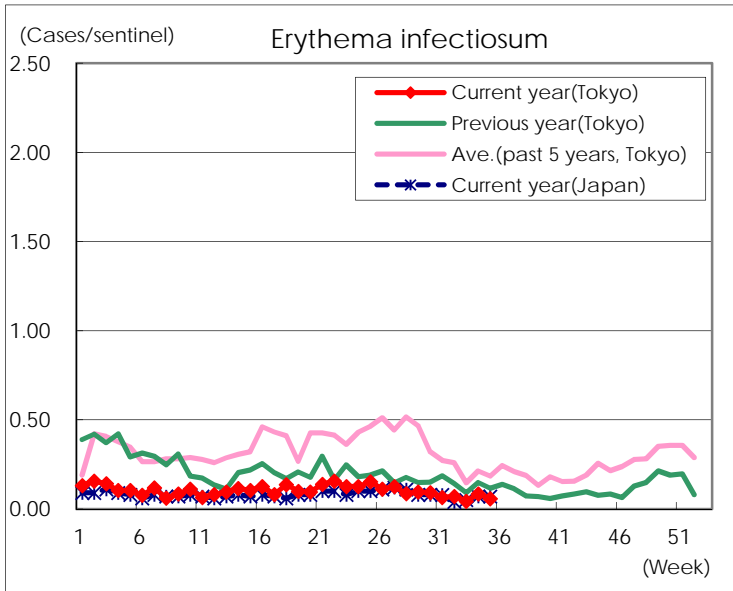
Number of patients with the diseases to be reported  
by the designated clinics and hospitals

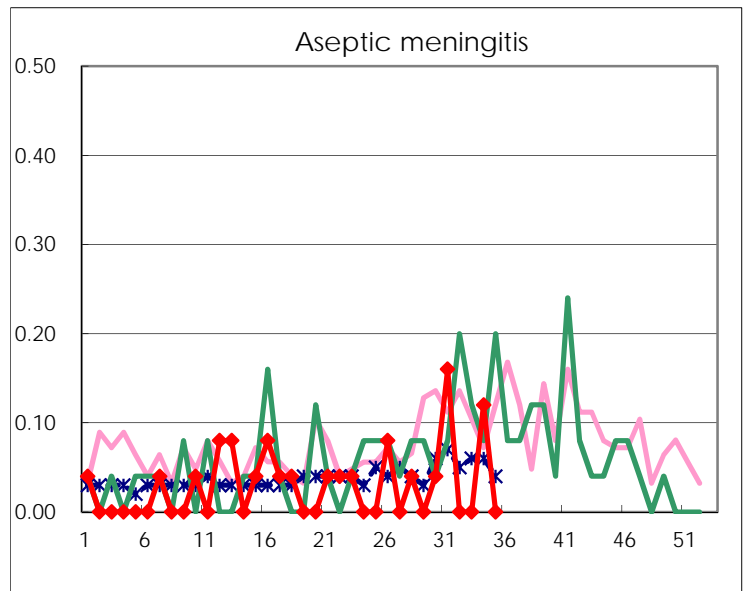
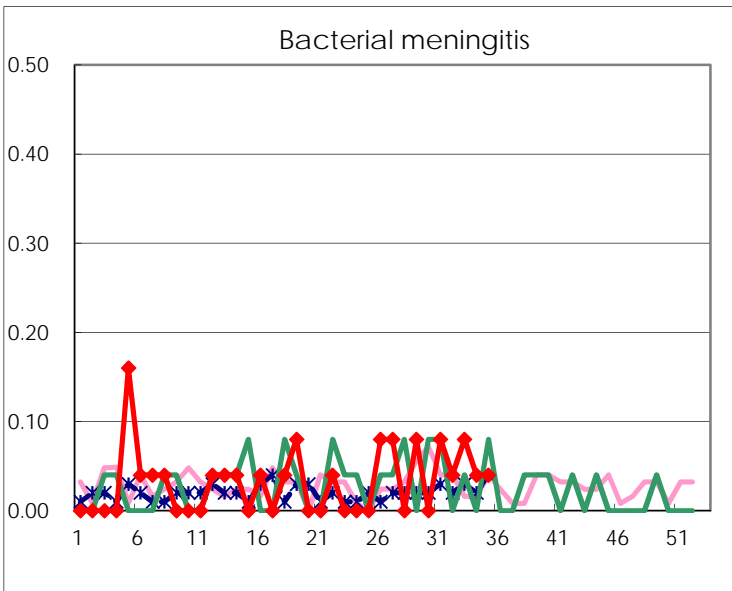
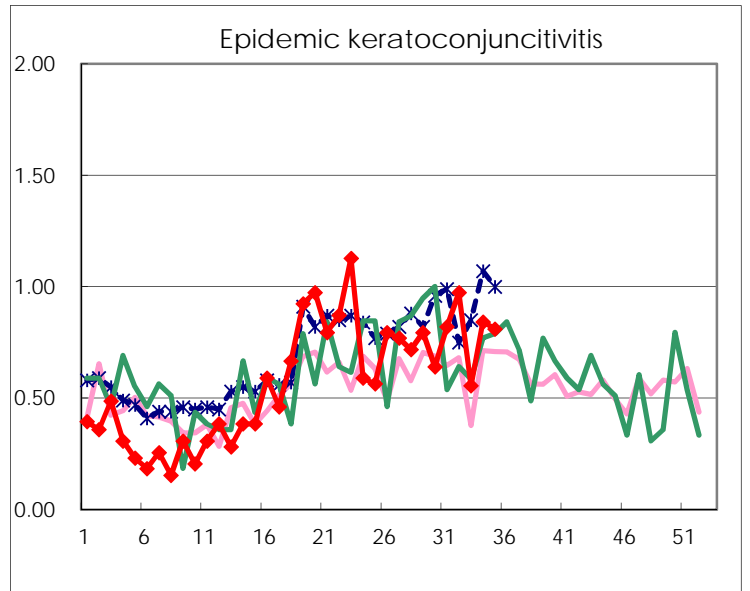
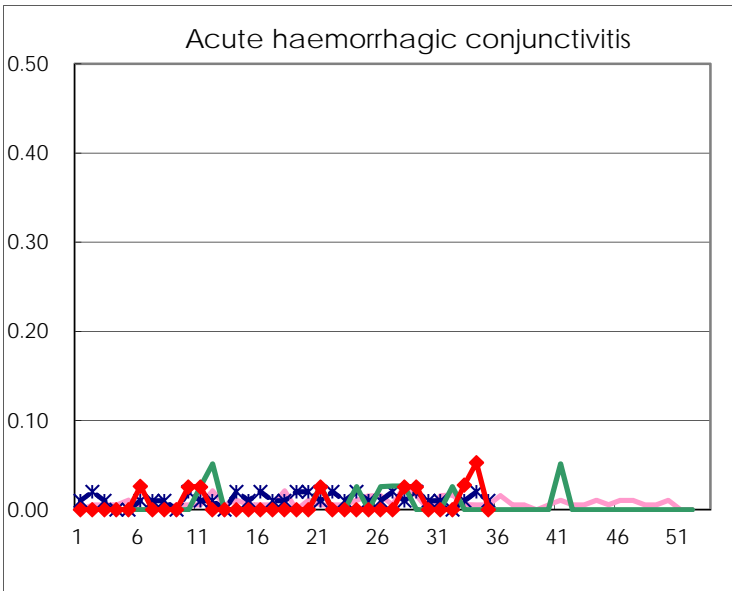
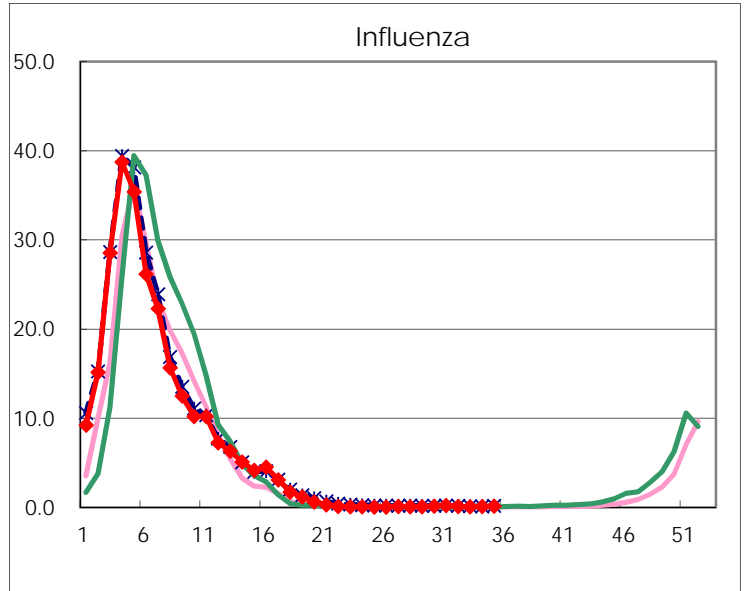
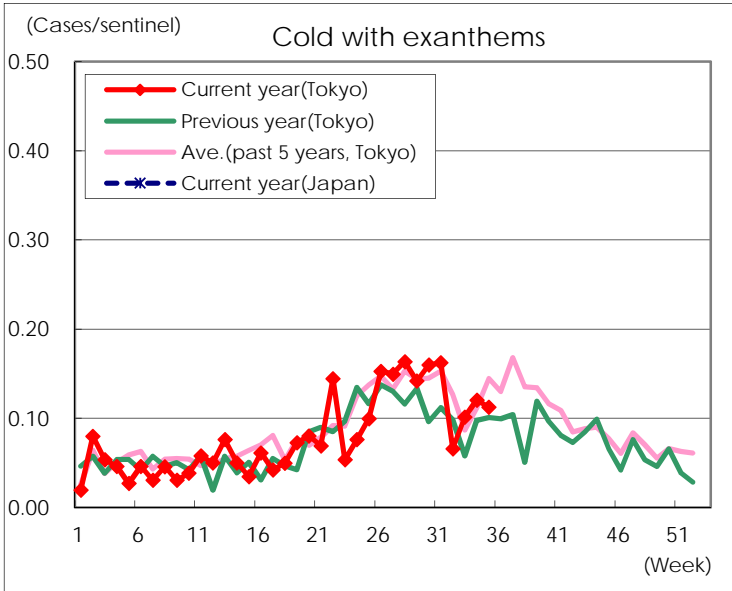
Diseases	Tokyo				
	32nd	33rd	34th	35th	/sentinel
Respiratory syncytial virus infection	482	460	626	820	3.18
Pharyngoconjunctival fever	163	130	137	121	0.47
Group A streptococcal pharyngitis	229	203	240	276	1.07
Infectious gastroenteritis	780	644	796	872	3.38
Chickenpox	59	50	54	34	0.13
Hand, foot, and mouth disease	2,666	1,829	2,347	2,162	8.38
Erythema infectiosum	17	10	21	15	0.06
Exanthem subitum	102	93	115	137	0.53
Pertussis	3	1	4		
Herpangina	485	296	467	438	1.70
Mumps	46	32	38	46	0.18
Kawasaki disease	4	2	6	3	0.01
Cold with exanthems	16	23	30	29	0.11
Influenza	36	29	40	58	0.14
Acute hemorrhagic conjunctivitis		1	2		
Epidemic keratoconjunctivitis	37	20	32	30	0.81
Bacterial meningitis	1	2	1	1	0.04
Aseptic meningitis			3		
Mycoplasma pneumonia		3	10	6	0.24
Chlamydial pneumonia (excluding psittacosis)				2	0.08
Infectious gastroenteritis (only by Rotavirus)		2		1	0.04
Influenza-Associated Hospitalizations	4	1	7	1	0.04

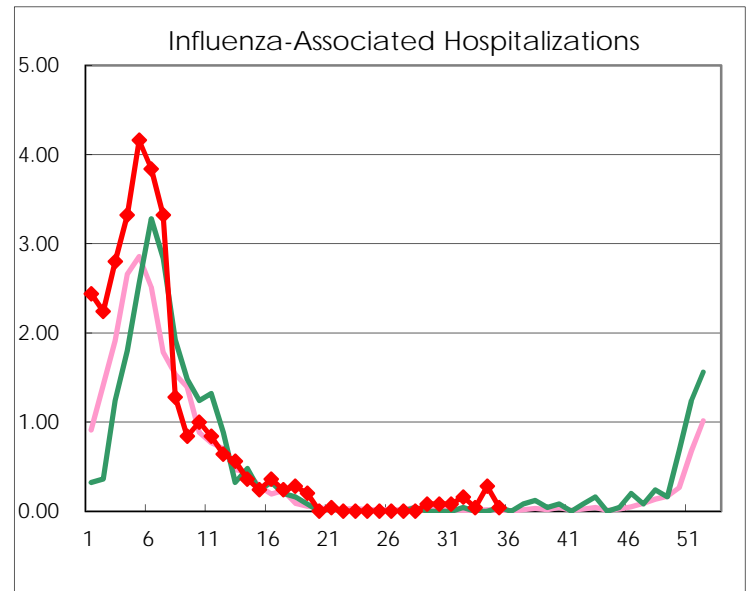
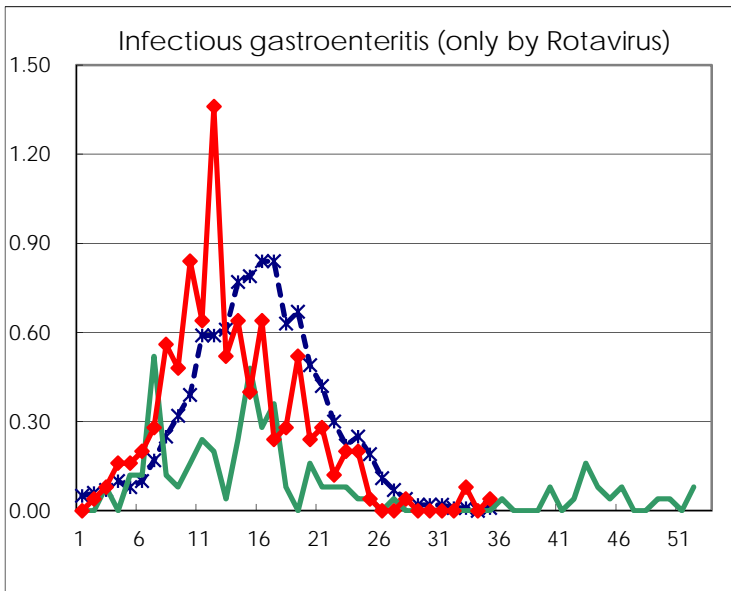
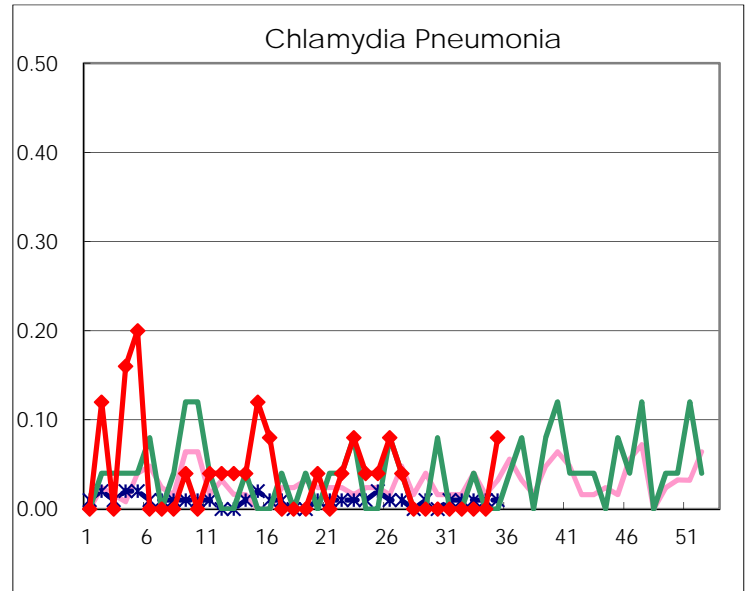
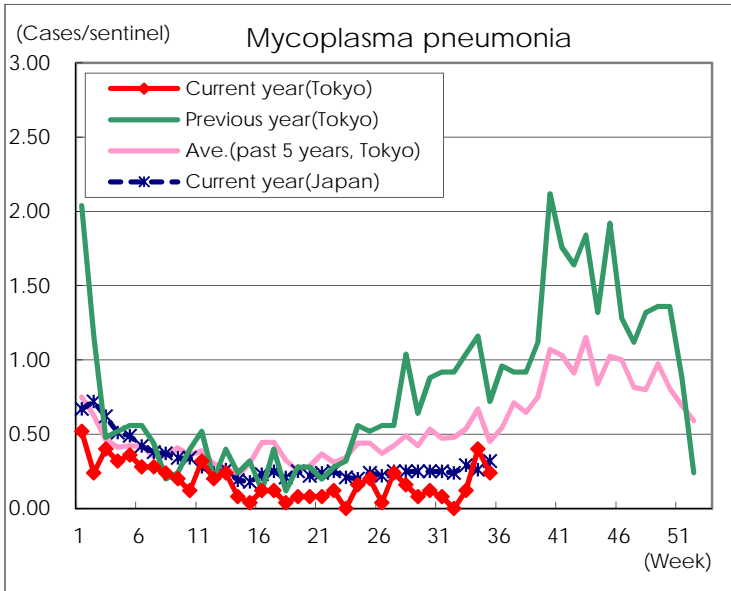
( Blank means 0. )

# Disease Trend Graph (weekly reported cases per sentinel in comparison)









Number of sentinel facilities for weekly reporting		
Types of sentinels	Number of sentinels	Sentinels having reported
Pediatric	264	258
Influenza	419	411
Ophthalmic	39	37
Specially-designated	25	25