

## 14 September 2017 / Number 36

### Surveillance System in Tokyo, Japan

The infectious diseases which all physicians must report

All physicians must report to health centers the incidence of the diseases which are shown at page one. Health centers electronically report the individual cases to Tokyo Metropolitan Infectious Disease Surveillance Center.

The infectious diseases required to be reported by the sentinels

The numbers of patients who visit the sentinel clinics or hospitals during a week are reported to health centers in Tokyo. And they electronically report the numbers to Tokyo Metropolitan Infectious Disease Surveillance Center. We have about 500 sentinel clinics and hospitals in Tokyo.

Tokyo Metropolitan Institute of Public Health

TEL:81-3-3363-3213 FAX:81-3-5332-7365

e-mail:[www@tokyo-eiken.go.jp](mailto:www@tokyo-eiken.go.jp)

URL:[idsc.tokyo-eiken.go.jp/](http://idsc.tokyo-eiken.go.jp/)

---

Number of patients with the diseases which all physicians must report

Category	Diseases	Tokyo				Japan		
		33rd	34th	35th	36th	Cum 2017	36th	Cum 2017
I	Ebola hemorrhagic fever							
	Crimean-Congo hemorrhagic fever							
	Smallpox							
	South American hemorrhagic fever							
	Plague							
	Marburg disease							
	Lassa fever							
II	Acute poliomyelitis							
	Tuberculosis	69	63	76	67	2,328	362	15,560
	Diphtheria							
	Severe Acute Respiratory Syndrome(SARS)							
	Middle East Respiratory Syndrome (MERS)							
	Avian influenza H5N1							
	Avian influenza H7N9							
III	Cholera					1		6
	Shigellosis			2		26	2	102
	Enterohemorrhagic Escherichia coli infection	73	37	36	29	358	178	2,776
	Typhoid fever					7	1	26
	Paratyphoid fever					5		11
IV	Hepatitis E		2	2	1	46	6	236
	West Nile fever							
	Hepatitis A	2				52	4	204
	Echinococcosis					1	1	20
	Yellow fever							
	Psittacosis							10
	Omsk hemorrhagic fever							
	Relapsing fever					1	1	5
	Kyasanur forest disease							
	Q fever							
	Rabies							
	Coccidioidomycosis					1		1
	Monkeypox							
	Zika virus infection						1	3
	Severe Fever with Thrombocytopenia Syndrome							73
	Hemorrhagic fever with renal syndrome							
	Western equine encephalitis							
	Tick-borne encephalitis							2
	Anthrax							
	Chikungunya fever					2	1	3
	Scrub typhus(Tsutsugamushi disease)					3	1	106
	Dengue fever	2	5	3	3	49	9	170
	Eastern equine encephalitis							
	Avian influenza (excluding H5N1 and H7N9)							
	Nipah virus infection							
	Japanese spotted fever		1			1	7	204
	Japanese encephalitis							
	Hantavirus pulmonary syndrome							
	Herpes B virus infection							
	Glanders							
	Brucellosis							1
	Venezuelan equine encephalitis							
Hendra virus infection								
Epidemic typhus								
Botulism					1		3	
Malaria		1	3	3	21	4	42	
Tularemia								
Lyme disease					1		16	
Lyssavirus infection(excluding rabies)								
Rift valley fever								
Melioidosis					1		1	
Legionellosis	4	6	7	3	104	45	1,147	
Leptospirosis				2	5	3	21	
Rocky mountain spotted fever								

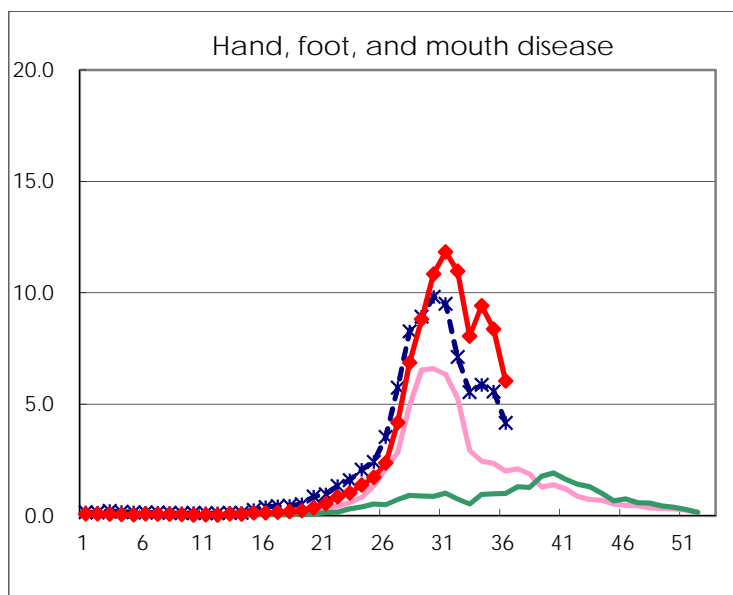
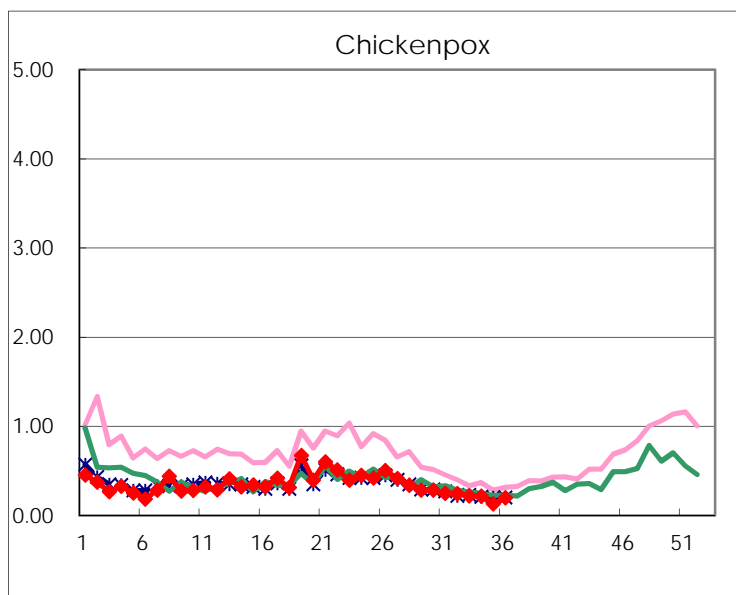
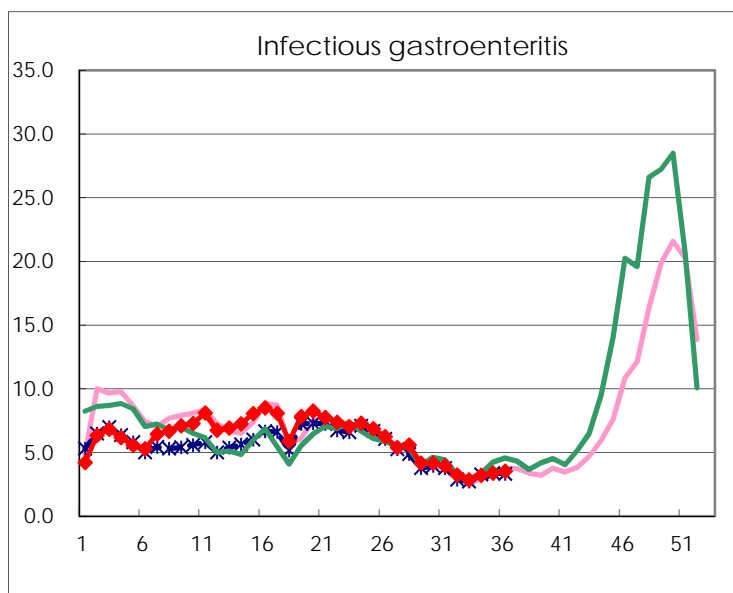
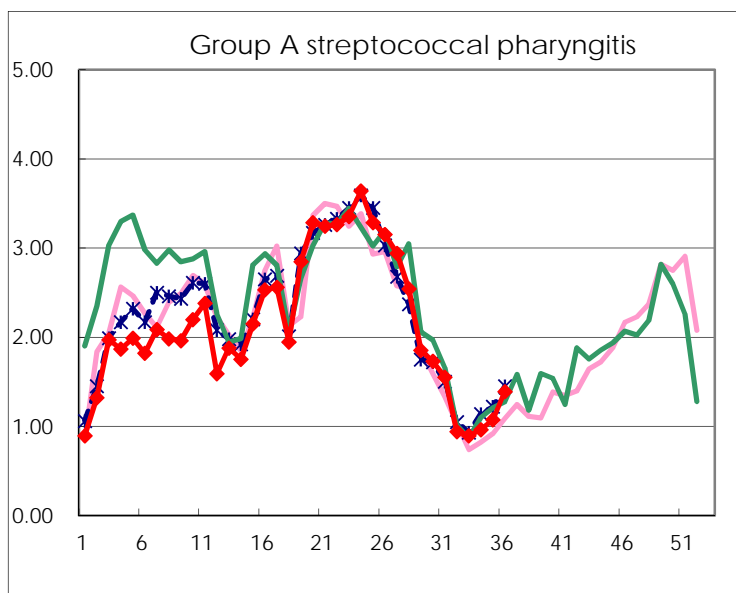
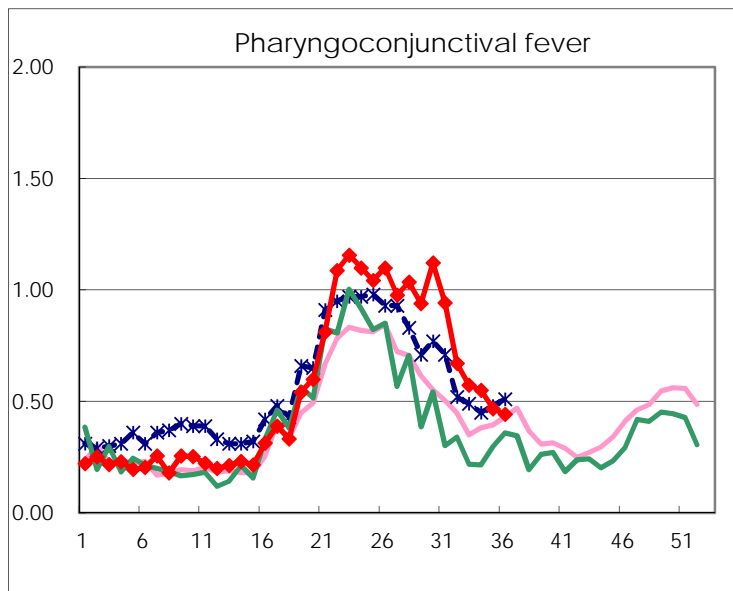
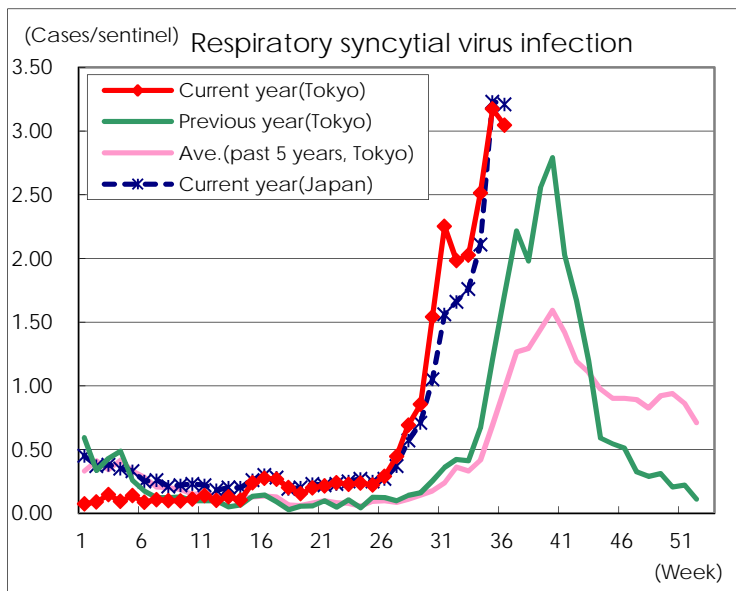
Category	Diseases	Tokyo					Japan	
		33rd	34th	35th	36th	Cum 2017	36th	Cum 2017
V	Amebiasis	4	2	3	3	142	13	745
	Viral hepatitis(excluding hepatitis A and E)	1	2	3	1	45	1	200
	CRE infection	5	5	5	2	142	16	1,089
	Acute encephalitis(excluding JE and WNE)		3	1	5	53	3	500
	Cryptosporidiosis							8
	Creutzfeldt-Jakob disease	2	1			13	4	143
	Severe invasive streptococcal infections(TSLS)	1		1	1	53	3	390
	Acquired immunodeficiency syndrome (AIDS)	10	12	10	9	331	13	961
	Giardiasis	1	1		1	20	1	44
	Invasive <i>Haemophilus influenzae</i> disease	1	1	1	1	41		266
	Invasive meningococcal disease					2	1	19
	Invasive pneumococcal disease	2	3	2		296	15	2,326
	Varicella (limited to hospitalized case)	2	1	1		37	4	210
	Congenital rubella syndrome							
	Syphilis	39	44	55	38	1,244	84	3,856
	Disseminated cryptococcosis					10	1	89
	Tetanus					3	3	88
	Vancomycin-resistant <i>S. aureus</i> infection							
	Vancomycin-resistant Enterococcus infection			1		7	1	57
	Rubella	1		1	3	18	2	64
Measles	3				26		176	
MDRA infection		1			2		16	

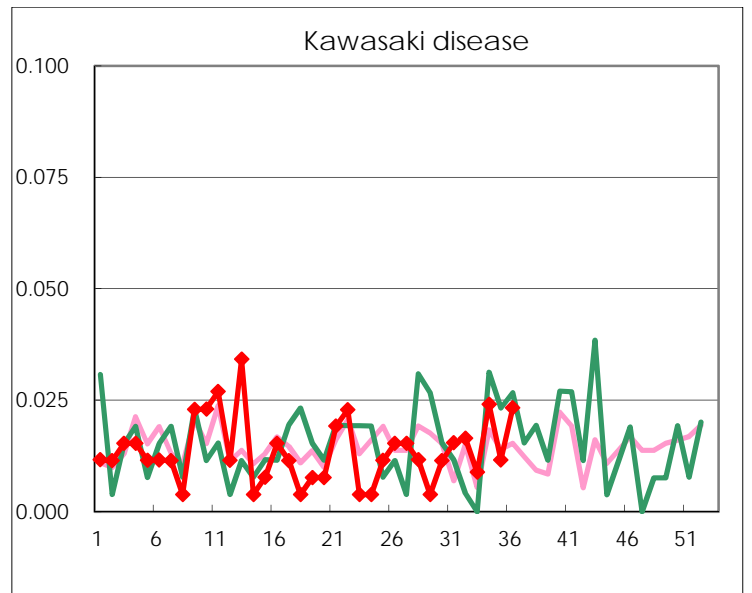
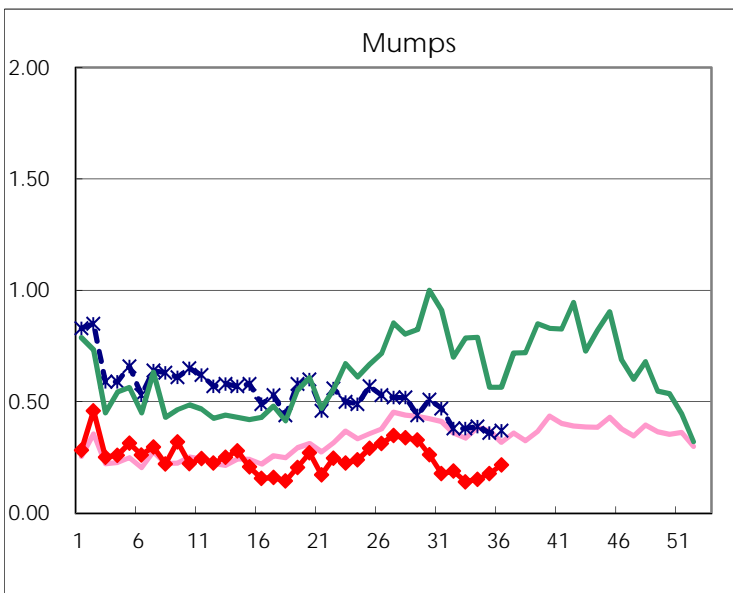
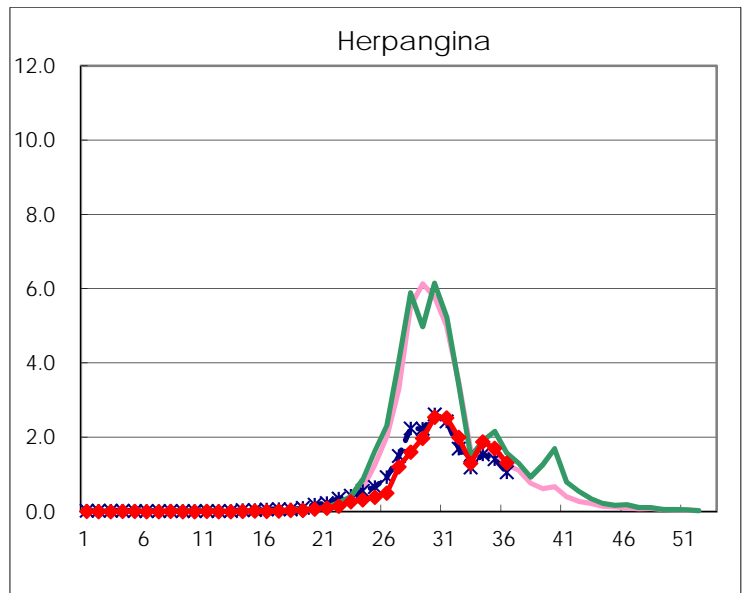
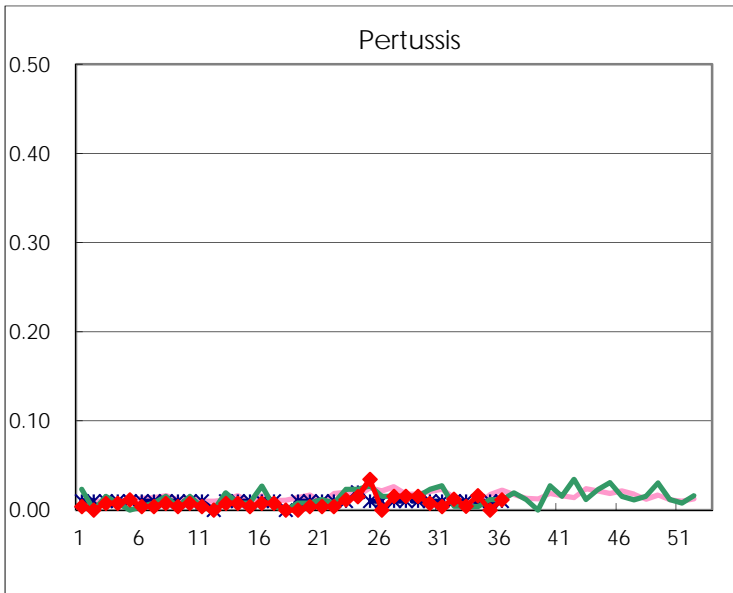
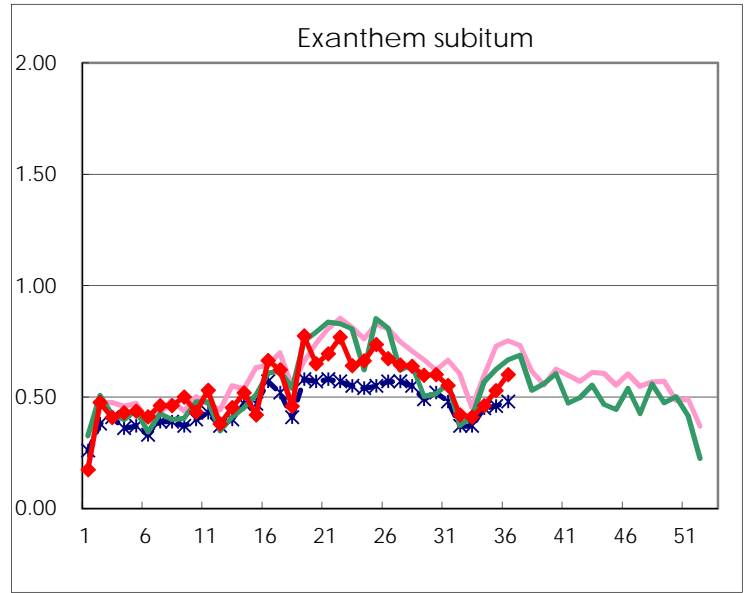
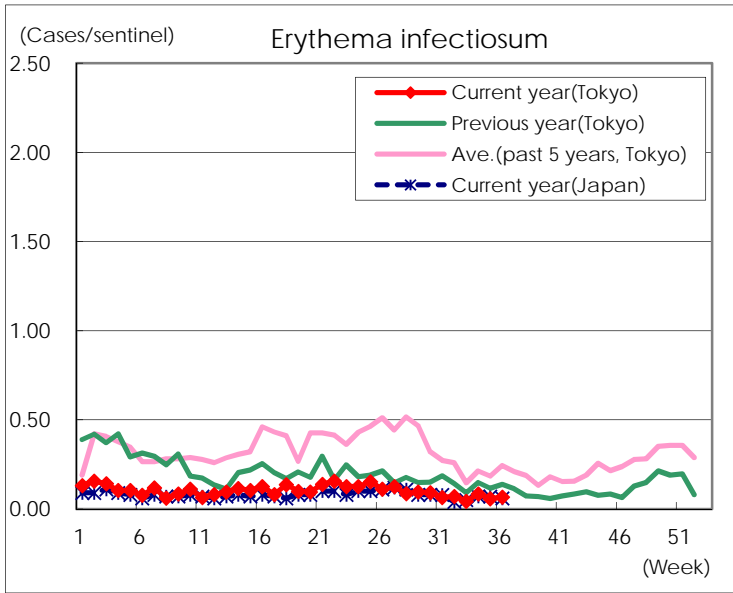
Number of patients with the diseases to be reported  
by the designated clinics and hospitals

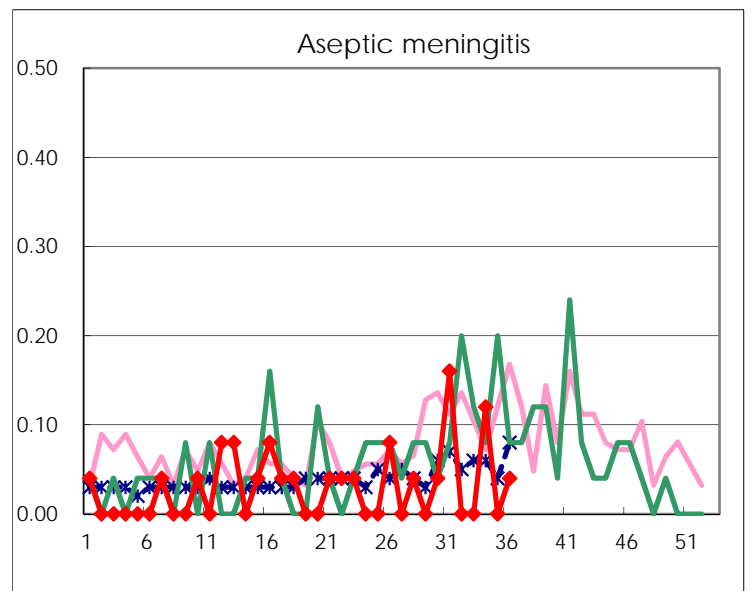
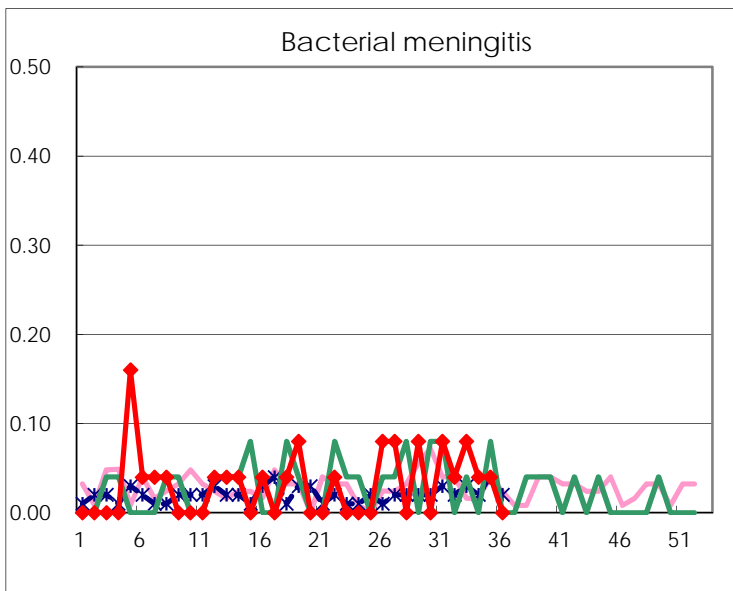
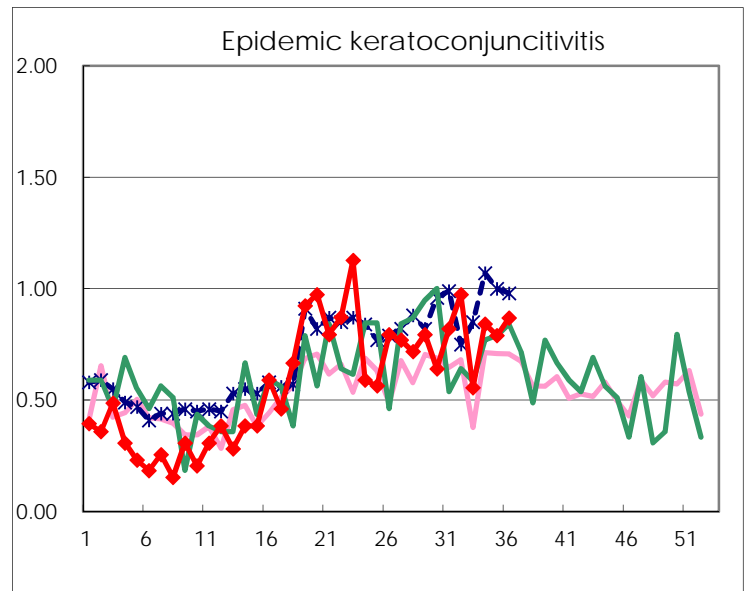
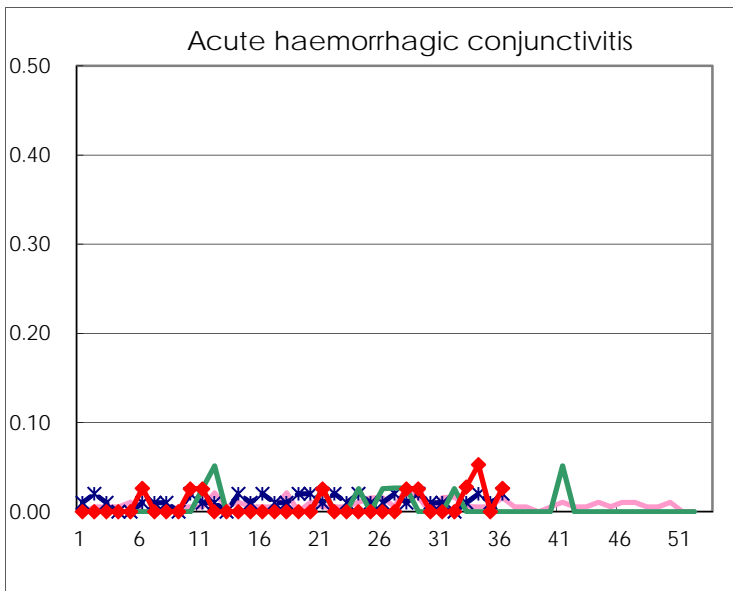
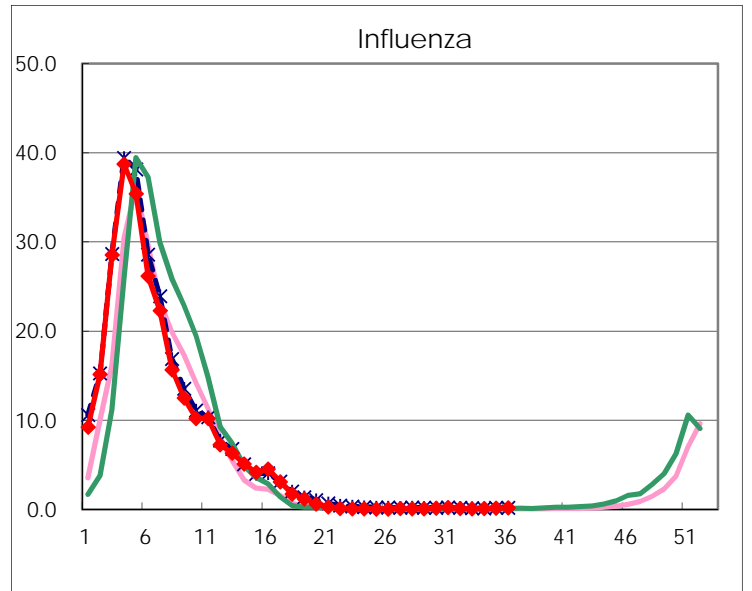
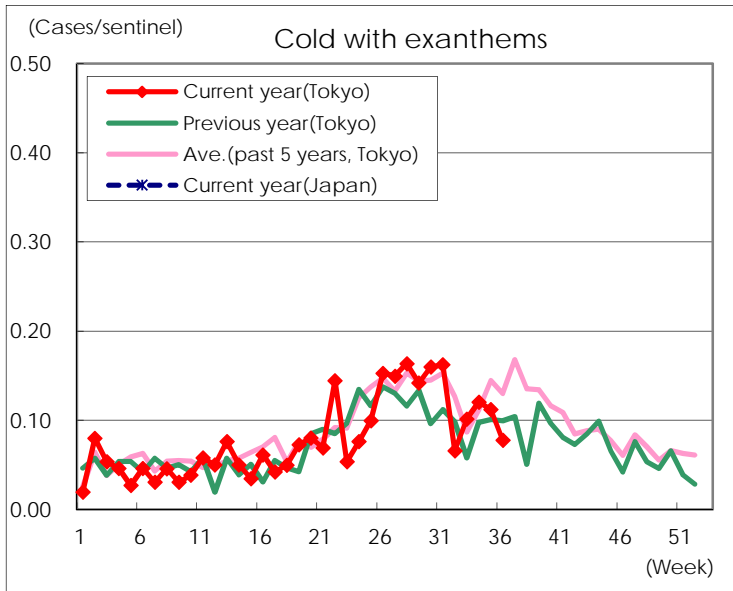
Diseases	Tokyo				
	33rd	34th	35th	36th	/sentinel
Respiratory syncytial virus infection	460	626	822	786	3.05
Pharyngoconjunctival fever	130	137	121	114	0.44
Group A streptococcal pharyngitis	203	240	278	359	1.39
Infectious gastroenteritis	644	796	872	906	3.51
Chickenpox	50	54	34	51	0.20
Hand, foot, and mouth disease	1,829	2,347	2,168	1,560	6.05
Erythema infectiosum	10	21	15	17	0.07
Exanthem subitum	93	115	137	155	0.60
Pertussis	1	4		3	0.01
Herpangina	296	467	441	339	1.31
Mumps	32	38	46	56	0.22
Kawasaki disease	2	6	3	6	0.02
Cold with exanthems	23	30	29	20	0.08
Influenza	29	40	58	71	0.17
Acute hemorrhagic conjunctivitis	1	2		1	0.03
Epidemic keratoconjunctivitis	20	32	30	33	0.87
Bacterial meningitis	2	1	1		
Aseptic meningitis		3		1	0.04
Mycoplasma pneumonia	3	10	6	2	0.08
Chlamydial pneumonia (excluding psittacosis)			2		
Infectious gastroenteritis (only by Rotavirus)	2		1		
Influenza-Associated Hospitalizations	1	7	1		

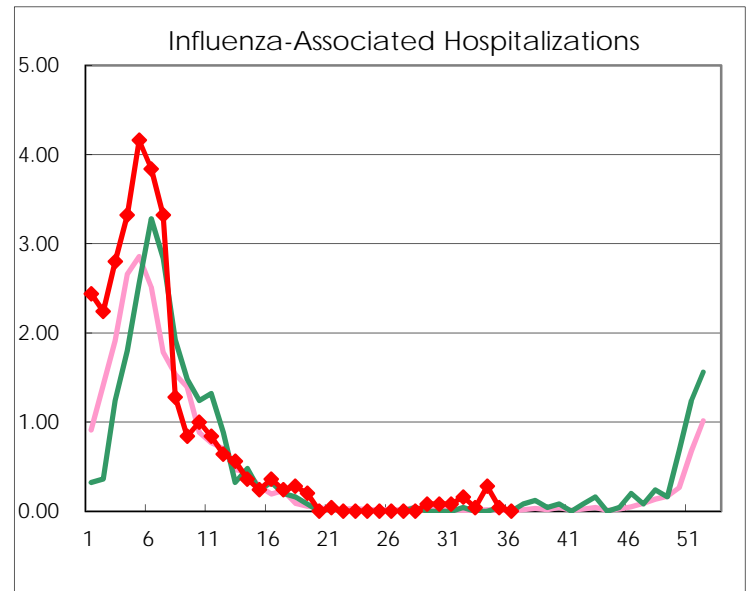
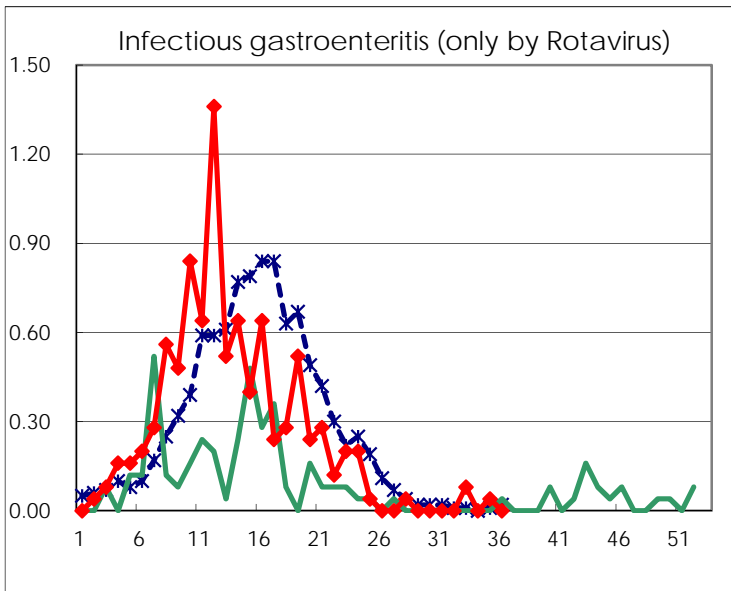
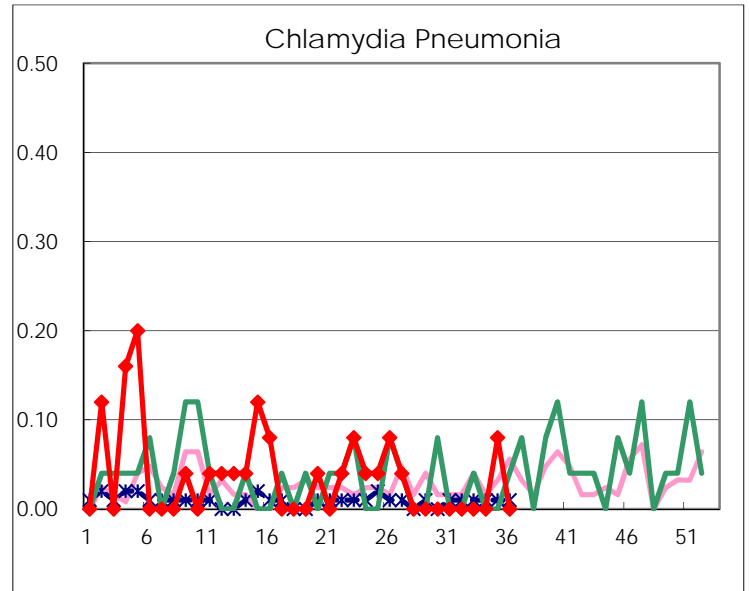
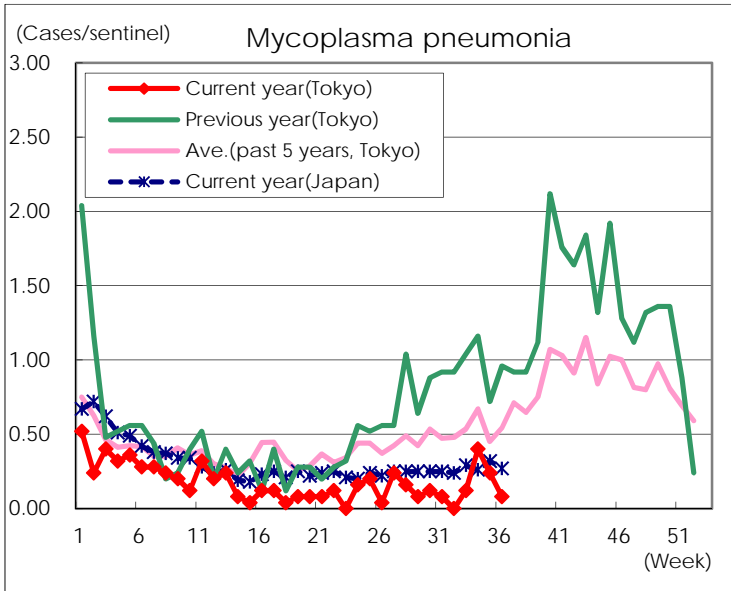
( Blank means 0. )

# Disease Trend Graph (weekly reported cases per sentinel in comparison)









Number of sentinel facilities for weekly reporting		
Types of sentinels	Number of sentinels	Sentinels having reported
Pediatric	264	258
Influenza	419	413
Ophthalmic	39	38
Specially-designated	25	25