

20 December 2018 / Number 50

Surveillance System in Tokyo, Japan

The infectious diseases which all physicians must report

All physicians must report to health centers the incidence of the diseases which are shown at page one. Health centers electronically report the individual cases to Tokyo Metropolitan Infectious Disease Surveillance Center.

The infectious diseases required to be reported by the sentinels

The numbers of patients who visit the sentinel clinics or hospitals during a week are reported to health centers in Tokyo. And they electronically report the numbers to Tokyo Metropolitan Infectious Disease Surveillance Center. We have about 500 sentinel clinics and hospitals in Tokyo.

Tokyo Metropolitan Institute of Public Health

TEL:81-3-3363-3213 FAX:81-3-5332-7365

e-mail:www@tokyo-eiken.go.jp

URL:idsc.tokyo-eiken.go.jp/

Number of patients with the diseases which all physicians must report

Category	Diseases	Tokyo					Japan	
		47th	48th	49th	50th	Cum 2018	50th	Cum 2018
I	Ebola hemorrhagic fever							
	Crimean-Congo hemorrhagic fever							
	Smallpox							
	South American hemorrhagic fever							
	Plague							
	Marburg disease							
	Lassa fever							
II	Acute poliomyelitis							
	Tuberculosis	54	61	60	54	3,175	338	20,929
	Diphtheria							
	Severe Acute Respiratory Syndrome(SARS)							
	Middle East Respiratory Syndrome (MERS)							
	Avian influenza H5N1							
	Avian influenza H7N9							
III	Cholera							4
	Shigellosis	2	4	17	9	107	12	264
	Enterohemorrhagic Escherichia coli infection	5	10	1	5	462	24	3,793
	Typhoid fever					11		35
	Paratyphoid fever		1			9		22
IV	Hepatitis E	4	2		2	99	10	430
	West Nile fever							
	Hepatitis A	2	5	5	4	418	9	908
	Echinococcosis							12
	Yellow fever							
	Psittacosis					2		6
	Omsk hemorrhagic fever							
	Relapsing fever							6
	Kyasanur forest disease							
	Q fever					2		3
	Rabies							
	Coccidioidomycosis							2
	Monkeypox							
	Zika virus infection							
	Severe Fever with Thrombocytopenia Syndrome						1	77
	Hemorrhagic fever with renal syndrome							
	Western equine encephalitis							
	Tick-borne encephalitis							1
	Anthrax							
	Chikungunya fever						1	4
	Scrub typhus(Tsutsugamushi disease)		1	1	1	9	30	393
	Dengue fever	1	1	1	1	61	4	195
	Eastern equine encephalitis							
	Avian influenza (excluding H5N1 and H7N9)							
	Nipah virus infection							
	Japanese spotted fever						1	300
	Japanese encephalitis							
	Hantavirus pulmonary syndrome							
	Herpes B virus infection							
	Glanders							
	Brucellosis							3
	Venezuelan equine encephalitis							
	Hendra virus infection							
Epidemic typhus								
Botulism					1		2	
Malaria					13		47	
Tularemia								
Lyme disease					1		13	
Lyssavirus infection(excluding rabies)								
Rift valley fever								
Melioidosis					1		2	
Legionellosis		3			153	18	2,057	
Leptospirosis					5		30	
Rocky mountain spotted fever								

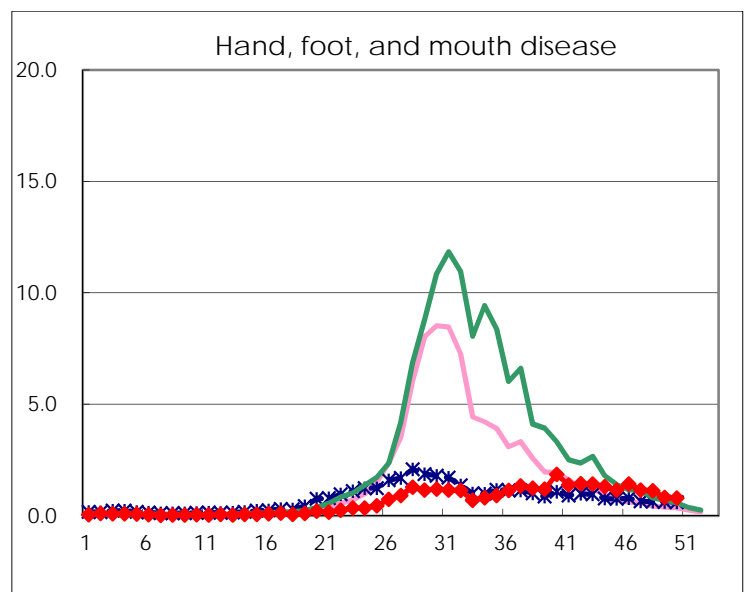
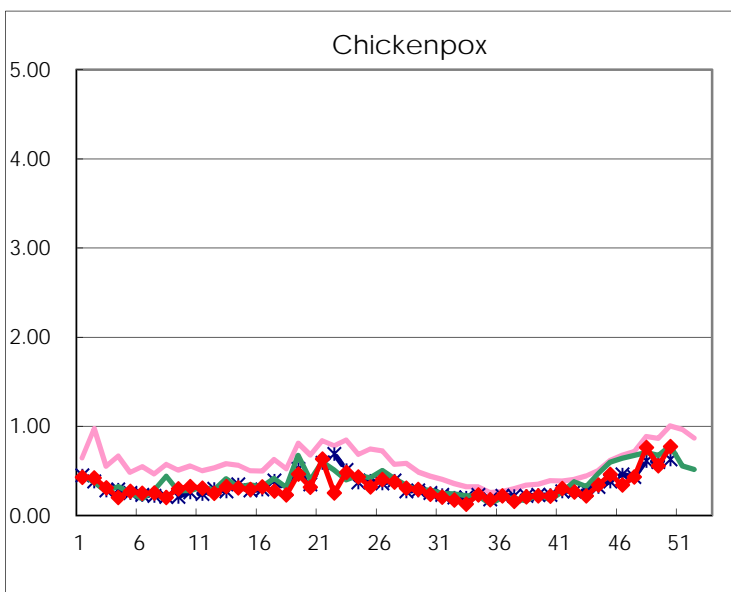
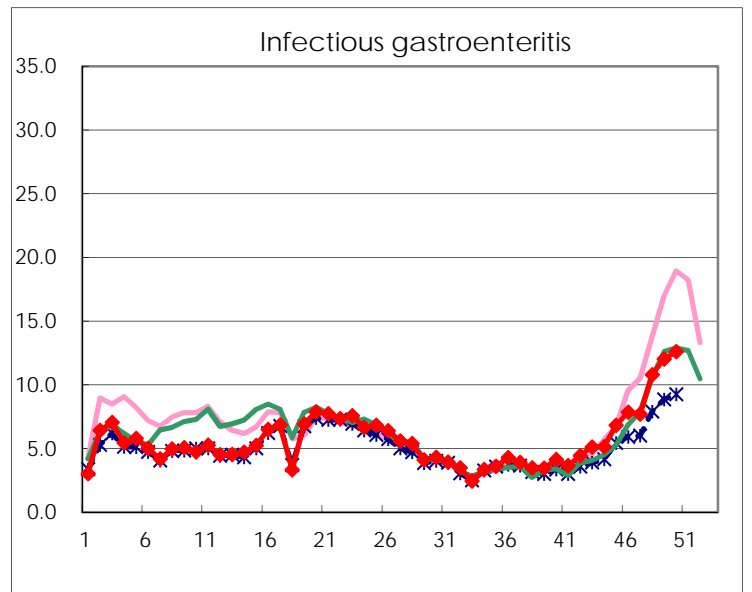
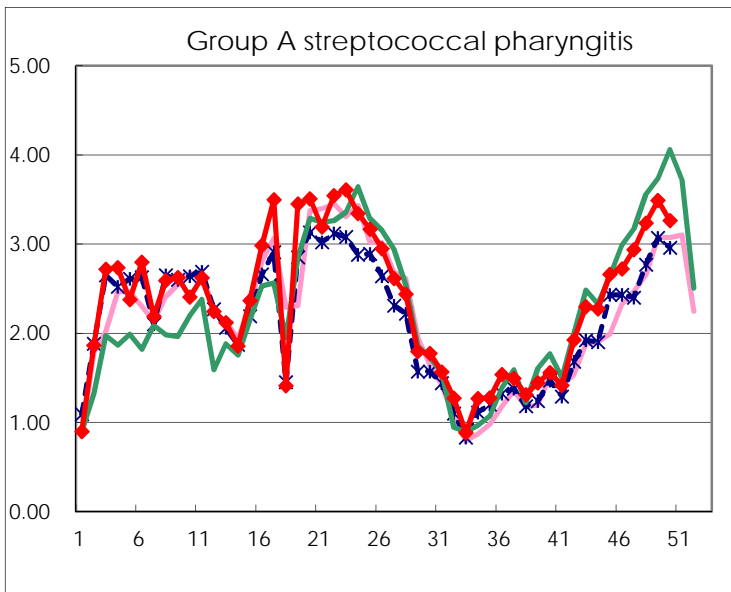
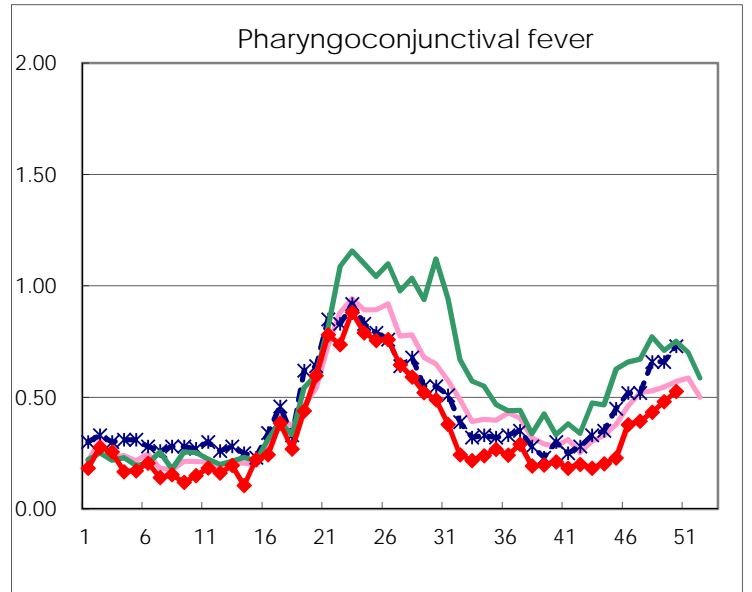
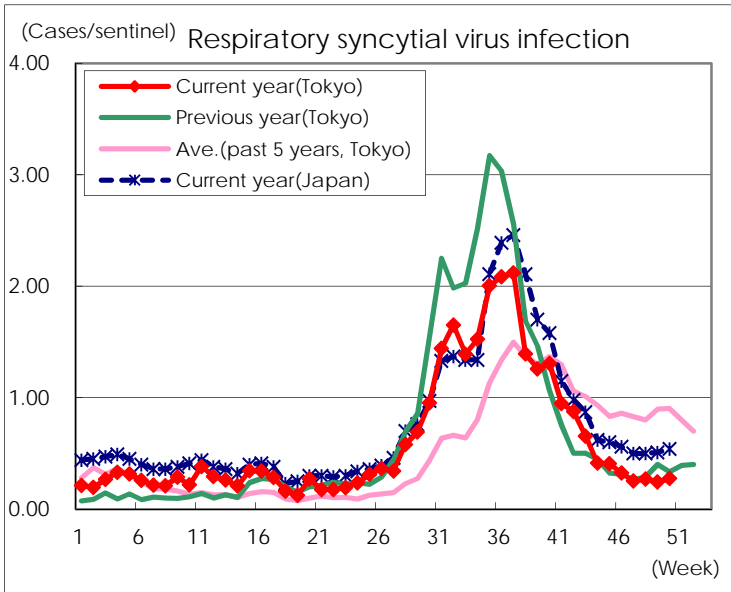
Category	Diseases	Tokyo					Japan	
		47th	48th	49th	50th	Cum 2018	50th	Cum 2018
V	Amebiasis	9	2		3	153	13	799
	Viral hepatitis(excluding hepatitis A and E)	3	1	4	3	67	3	251
	CRE infection	4	3	7	5	219	29	2,148
	Acute Flaccid Paralysis (excluding Acute poliomyelitis)				1	8	5	136
	Acute encephalitis(excluding JE and WNE)		2	1	1	60	11	623
	Cryptosporidiosis					3		24
	Creutzfeldt-Jakob disease			1		25	5	207
	Severe invasive streptococcal infections(TSLS)	1	1	1	1	84	7	655
	Acquired immunodeficiency syndrome (AIDS)	8	9	9	8	396	24	1,233
	Giardiasis					19		67
	Invasive <i>Haemophilus influenzae</i> disease	1	1	1		38	8	459
	Invasive meningococcal disease					6	2	34
	Invasive pneumococcal disease	10	13	12	7	376	57	3,136
	Varicella (limited to hospitalized case)		1		2	56	12	434
	Congenital rubella syndrome							
	Syphilis	31	36	40	39	1,703	98	6,661
	Disseminated cryptococcosis		1			18	1	169
	Tetanus	1				8		123
	Vancomycin-resistant <i>S. aureus</i> infection							
	Vancomycin-resistant <i>Enterococcus</i> infection	1				6	2	75
	Pertussis	89	89	105	65	2,270	287	11,179
Rubella	32	38	29	33	900	116	2,713	
Measles	1		1		20	1	272	
MDRA infection					4		23	

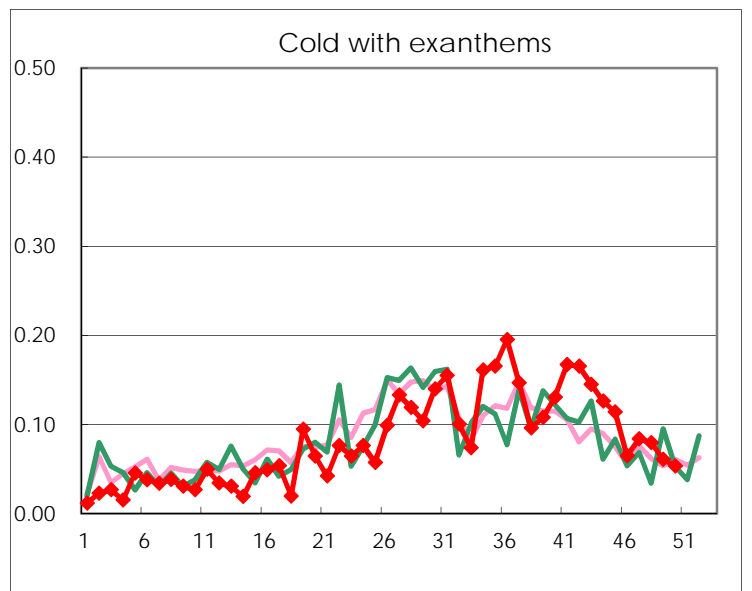
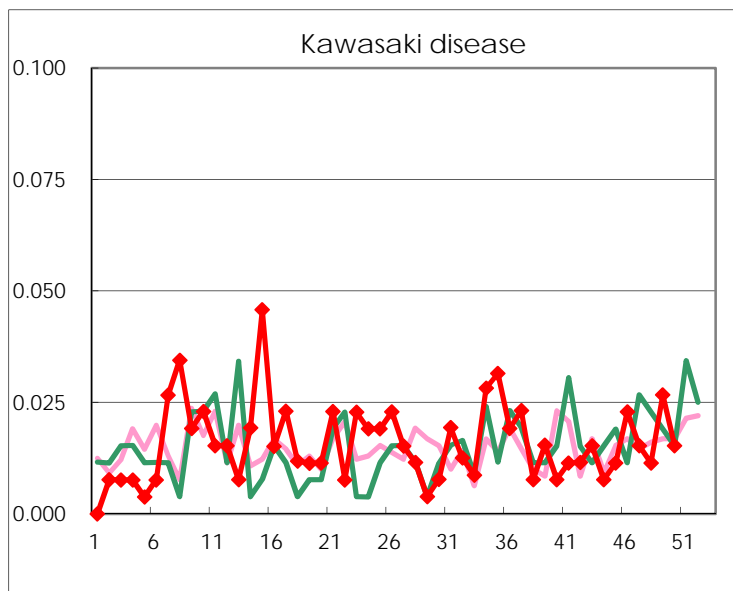
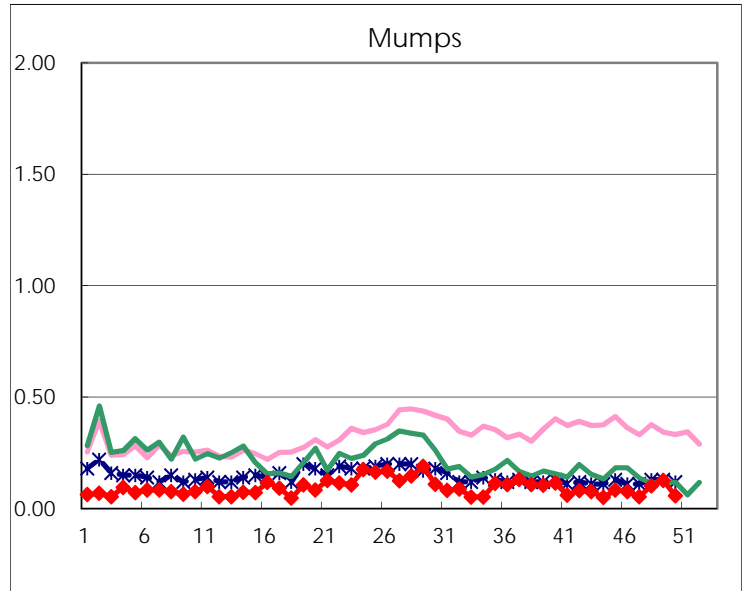
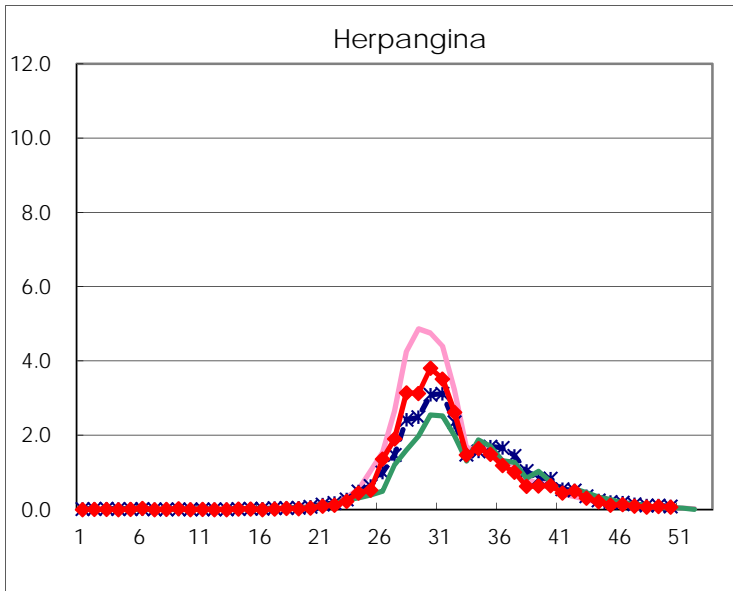
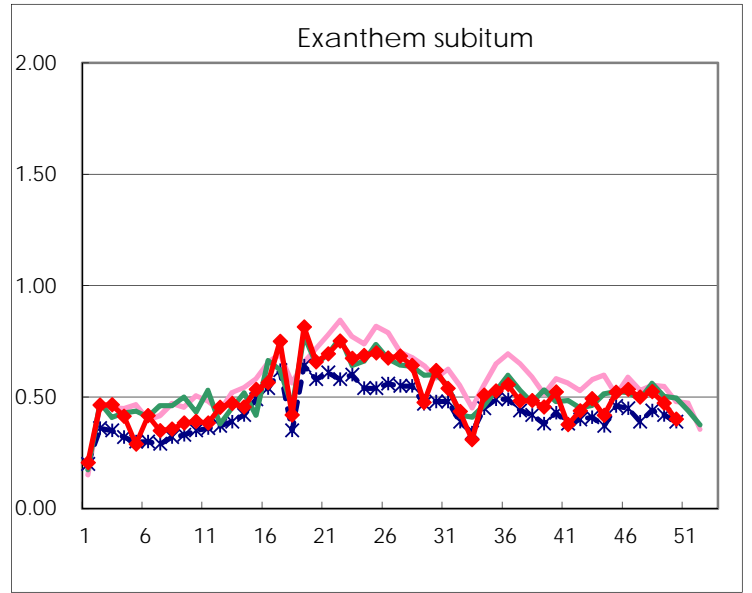
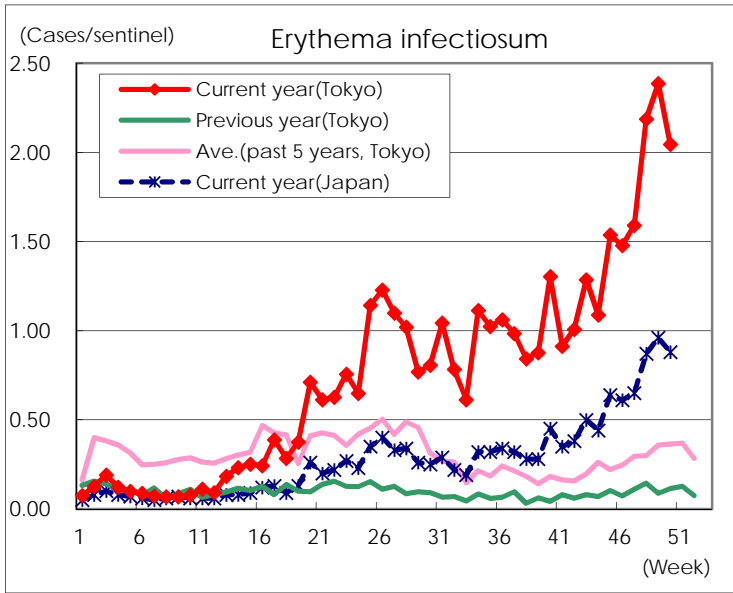
Number of patients with the diseases to be reported
by the designated clinics and hospitals

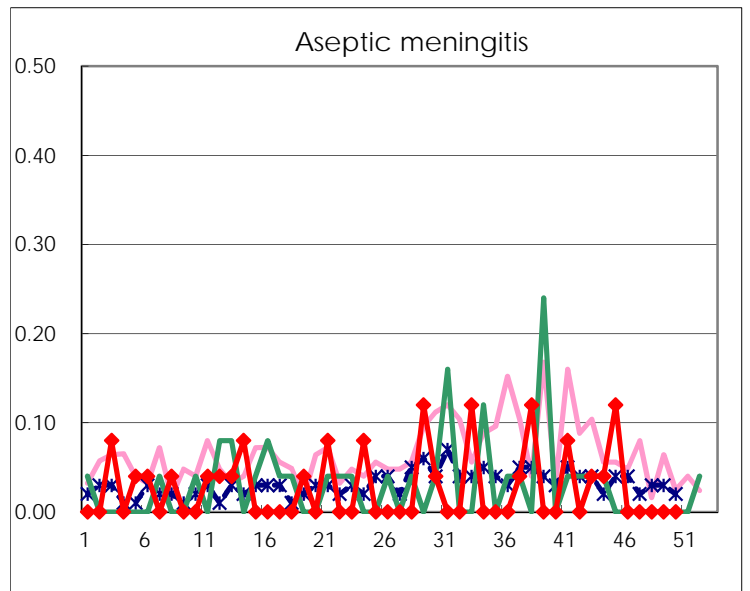
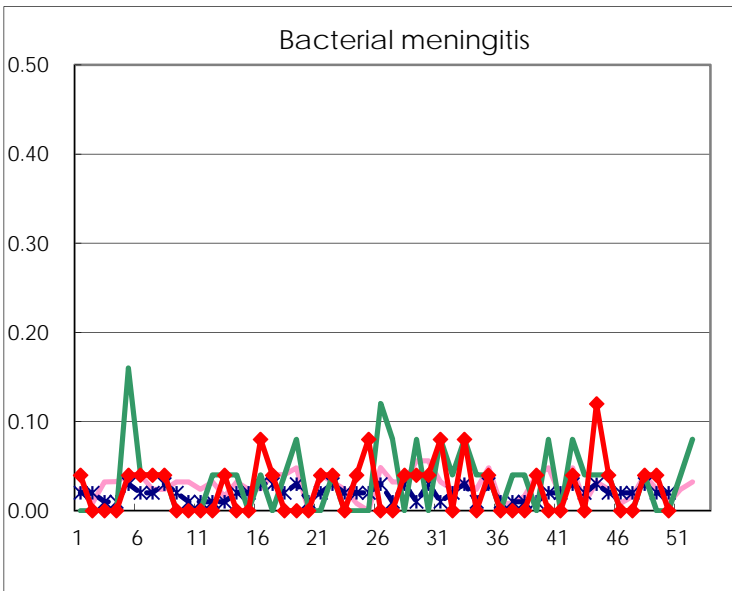
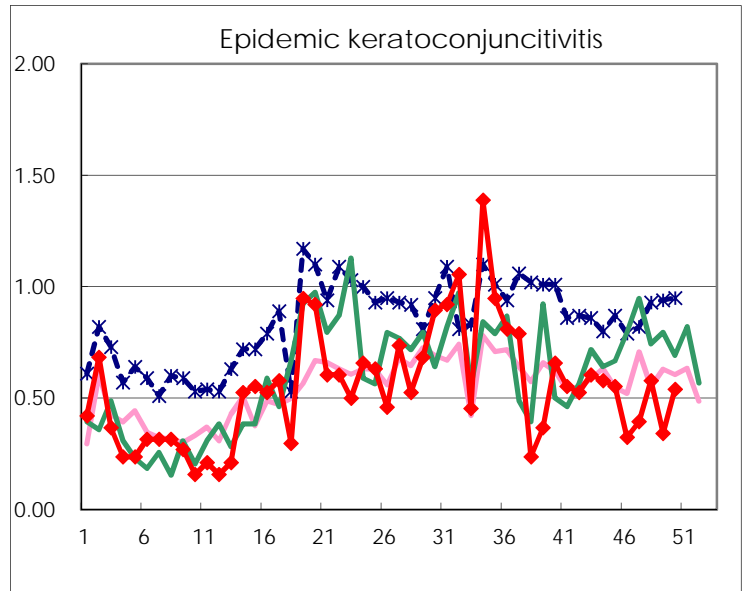
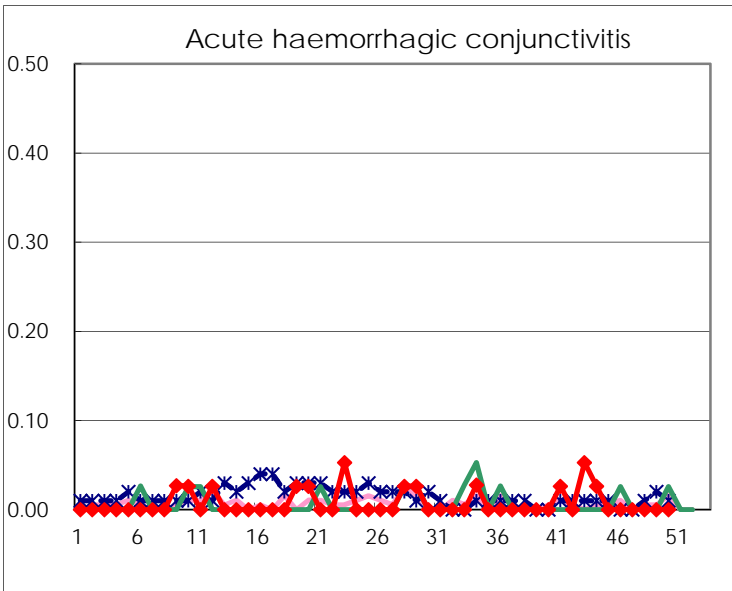
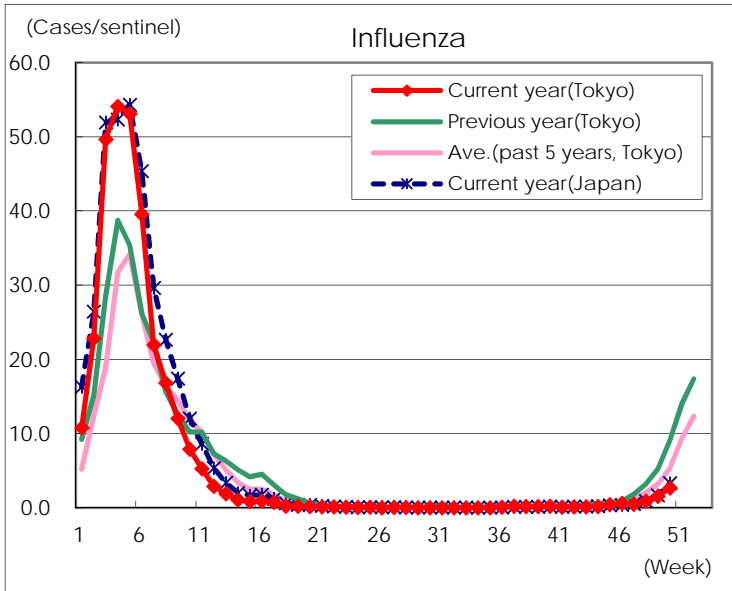
Diseases	Tokyo				
	47th	48th	49th	50th	/sentinel
Respiratory syncytial virus infection	66	71	64	72	0.27
Pharyngoconjunctival fever	103	114	126	138	0.53
Group A streptococcal pharyngitis	770	851	914	855	3.26
Infectious gastroenteritis	2,013	2,838	3,151	3,298	12.59
Chickenpox	113	200	146	202	0.77
Hand, foot, and mouth disease	303	296	214	209	0.80
Erythema infectiosum	417	575	625	536	2.05
Exanthem subitum	131	138	124	105	0.40
Herpangina	25	18	22	18	0.07
Mumps	14	27	33	15	0.06
Kawasaki disease	4	3	7	4	0.02
Cold with exanthems	22	21	16	14	0.05
Influenza	208	392	654	1,113	2.68
Acute hemorrhagic conjunctivitis					
Epidemic keratoconjunctivitis	15	22	13	20	0.54
Bacterial meningitis		1	1		
Aseptic meningitis					
<i>Mycoplasma pneumoniae</i>	10	17	8	7	0.28
Chlamydial pneumonia (excluding psittacosis)		3			
Infectious gastroenteritis (only by Rotavirus)	1			1	0.04
Influenza-Associated Hospitalizations		15	3	5	0.20

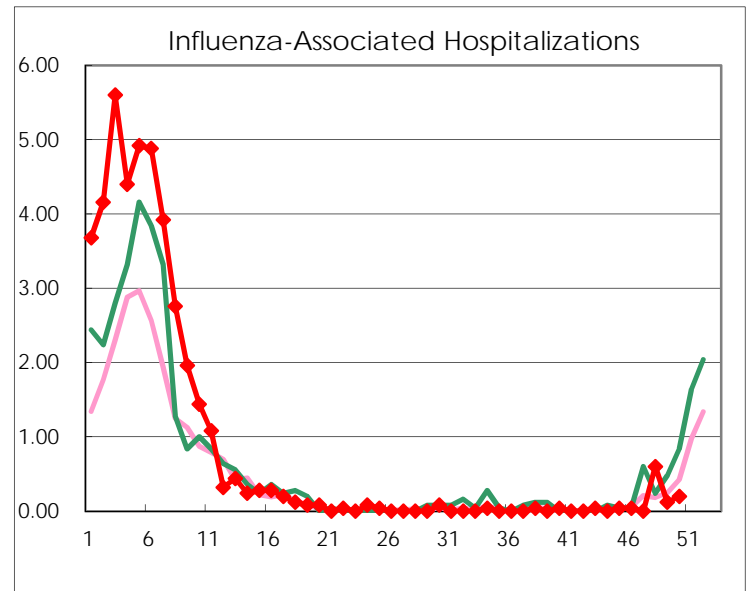
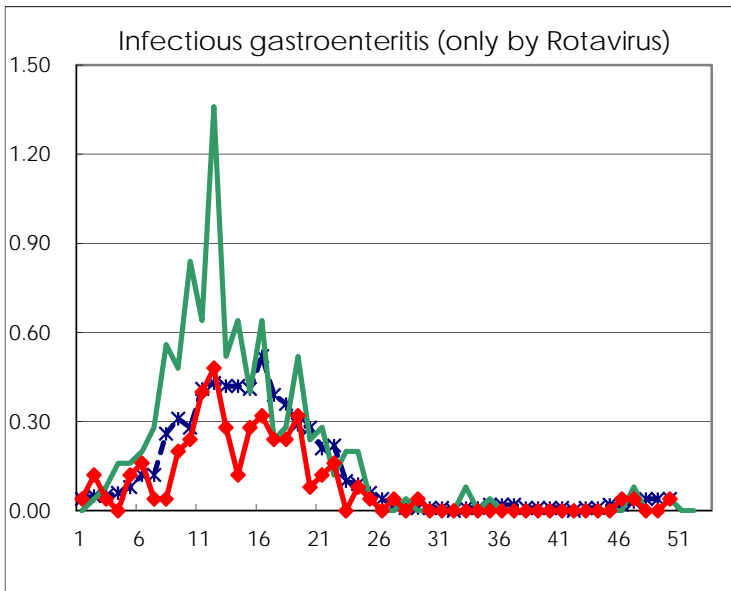
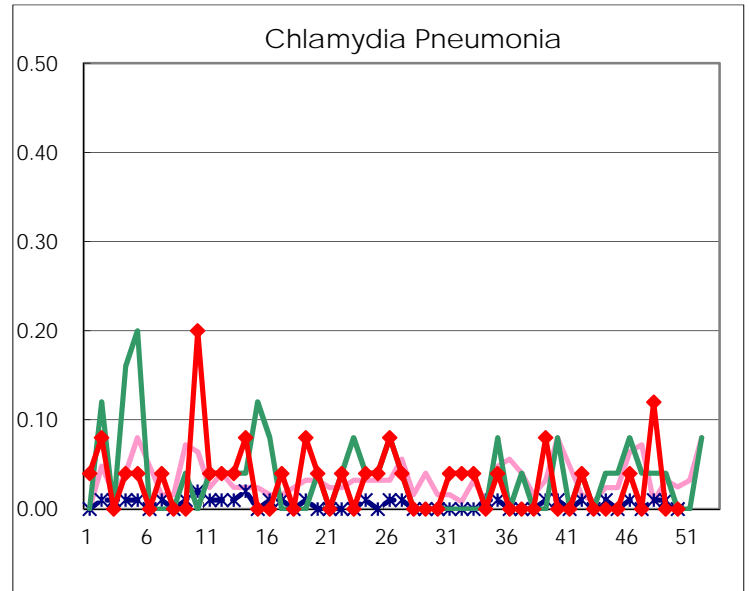
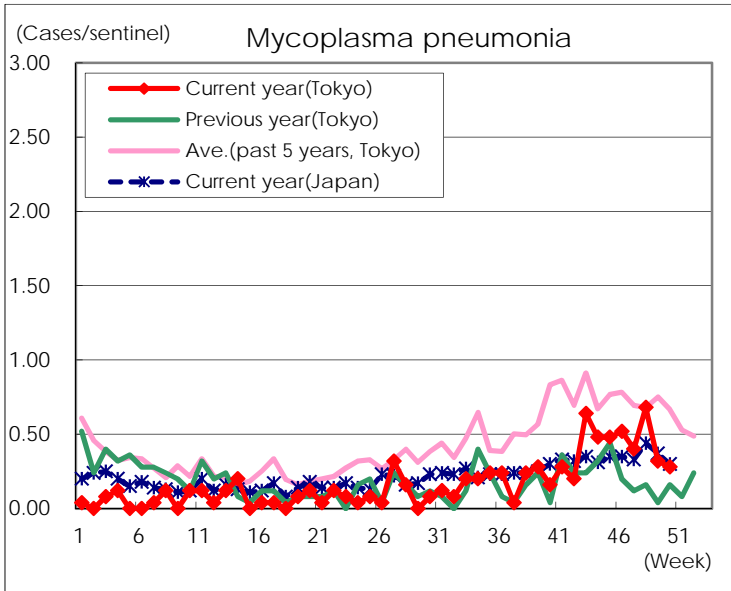
(Blank means 0.)

Disease Trend Graph (weekly reported cases per sentinel in comparison)









Number of sentinel facilities for weekly reporting		
Types of sentinels	Number of sentinels	Sentinels having reported
Pediatric	264	262
Influenza	419	416
Ophthalmic	39	37
Specially-designated	25	25