

8 January 2019 / Number 52

Surveillance System in Tokyo, Japan

The infectious diseases which all physicians must report

All physicians must report to health centers the incidence of the diseases which are shown at page one. Health centers electronically report the individual cases to Tokyo Metropolitan Infectious Disease Surveillance Center.

The infectious diseases required to be reported by the sentinels

The numbers of patients who visit the sentinel clinics or hospitals during a week are reported to health centers in Tokyo. And they electronically report the numbers to Tokyo Metropolitan Infectious Disease Surveillance Center. We have about 500 sentinel clinics and hospitals in Tokyo.

Tokyo Metropolitan Institute of Public Health

TEL:81-3-3363-3213 FAX:81-3-5332-7365

e-mail:www@tokyo-eiken.go.jp

URL:idsc.tokyo-eiken.go.jp/

Number of patients with the diseases which all physicians must report

Category	Diseases	Tokyo					Japan	
		49th	50th	51st	52nd	Cum 2018	52nd	Cum 2018
I	Ebola hemorrhagic fever							
	Crimean-Congo hemorrhagic fever							
	Smallpox							
	South American hemorrhagic fever							
	Plague							
	Marburg disease							
	Lassa fever							
II	Acute poliomyelitis							
	Tuberculosis	67	62	48	74	3,315	376	21,850
	Diphtheria							
	Severe Acute Respiratory Syndrome(SARS)							
	Middle East Respiratory Syndrome (MERS)							
	Avian influenza H5N1							
	Avian influenza H7N9							
III	Cholera							4
	Shigellosis	17	9	2		109	1	268
	Enterohemorrhagic Escherichia coli infection	1	5		4	466	21	3,844
	Typhoid fever					11		35
	Paratyphoid fever		1			10		23
IV	Hepatitis E		2	1	1	101	5	442
	West Nile fever							
	Hepatitis A	5	4	3		421	6	925
	Echinococcosis							12
	Yellow fever							
	Psittacosis					2		6
	Omsk hemorrhagic fever							
	Relapsing fever							6
	Kyasanur forest disease							
	Q fever					2		3
	Rabies							
	Coccidioidomycosis							2
	Monkeypox							
	Zika virus infection							
	Severe Fever with Thrombocytopenia Syndrome							77
	Hemorrhagic fever with renal syndrome							
	Western equine encephalitis							
	Tick-borne encephalitis							1
	Anthrax							
	Chikungunya fever							4
	Scrub typhus(Tsutsugamushi disease)	1	1		3	12	30	455
	Dengue fever	1	1			61	3	201
	Eastern equine encephalitis							
	Avian influenza (excluding H5N1 and H7N9)							
	Nipah virus infection							
	Japanese spotted fever						1	303
	Japanese encephalitis							
	Hantavirus pulmonary syndrome							
	Herpes B virus infection							
	Glanders							
	Brucellosis							3
	Venezuelan equine encephalitis							
	Hendra virus infection							
Epidemic typhus								
Botulism					1		2	
Malaria			1		14	1	50	
Tularemia								
Lyme disease					1		13	
Lyssavirus infection(excluding rabies)								
Rift valley fever								
Melioidosis					1		2	
Legionellosis		1	6	4	163	23	2,130	
Leptospirosis					5		31	
Rocky mountain spotted fever								

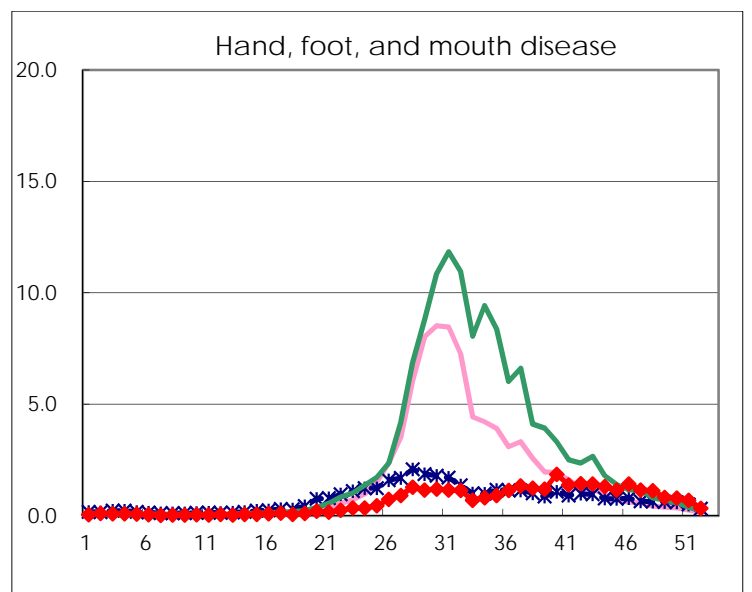
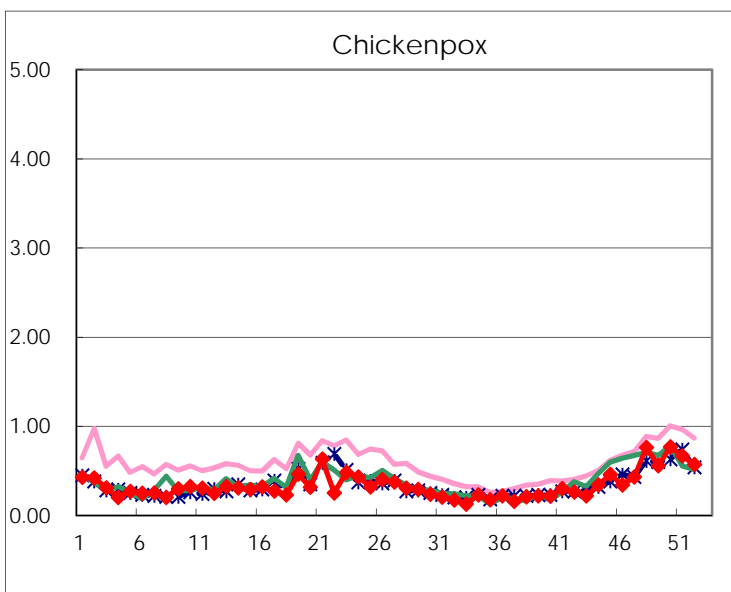
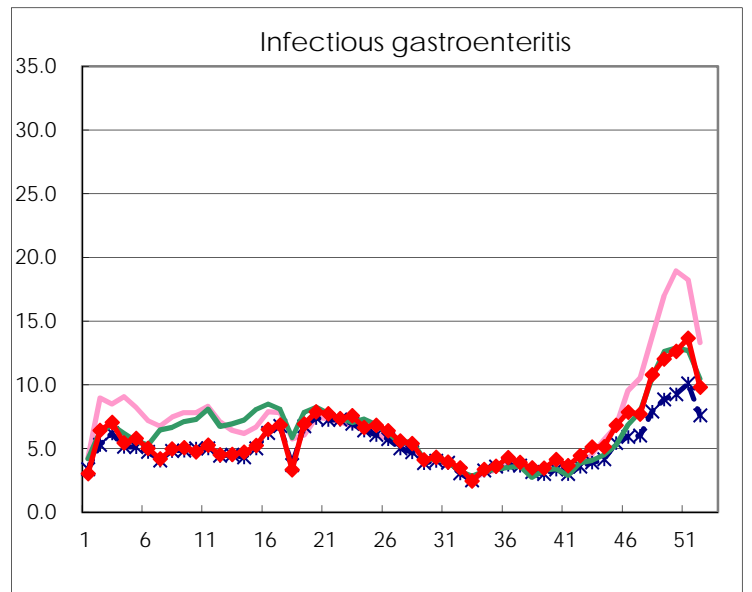
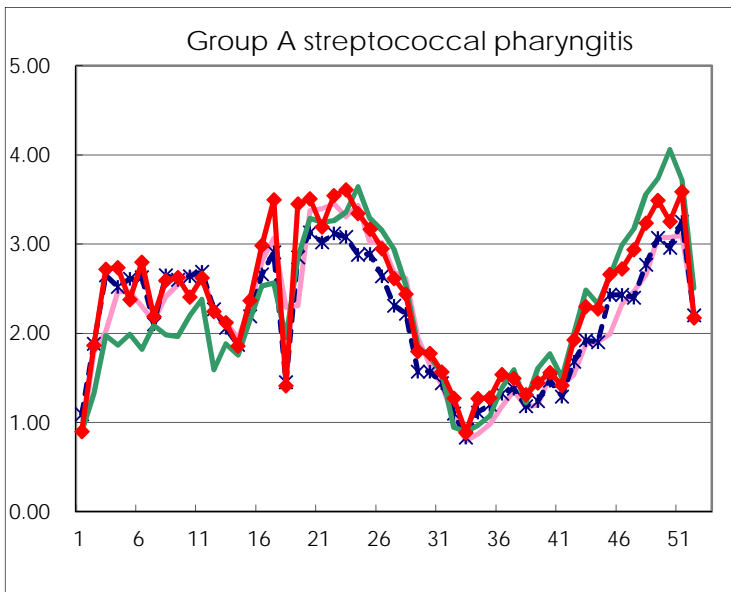
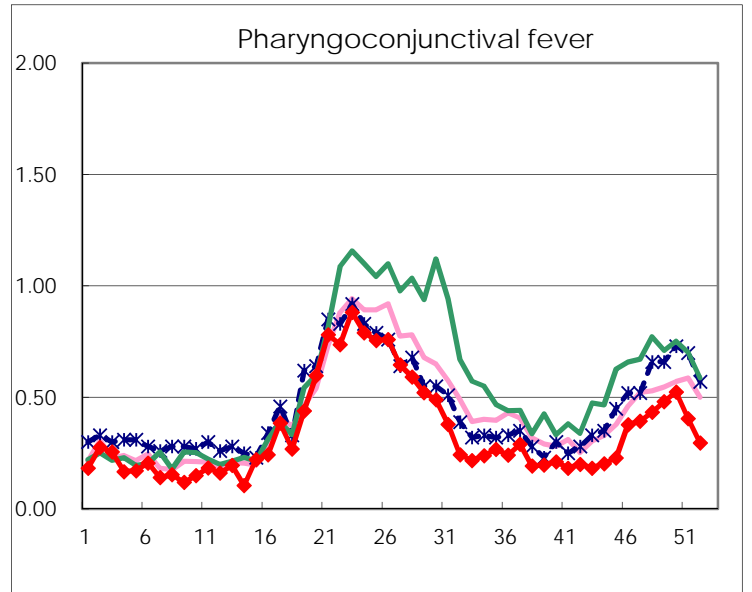
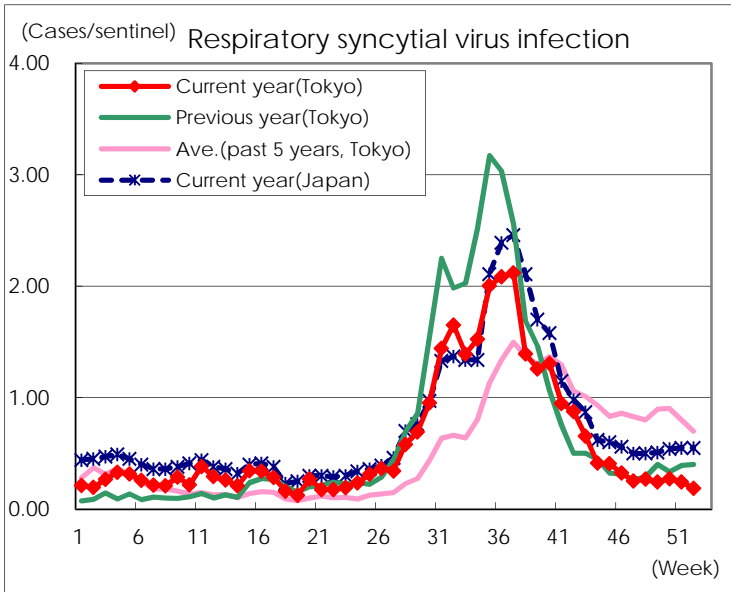
Category	Diseases	Tokyo					Japan	
		49th	50th	51st	52nd	Cum 2018	52nd	Cum 2018
V	Amebiasis		3	8		163	14	838
	Viral hepatitis(excluding hepatitis A and E)	4	3		1	69	3	269
	CRE infection	7	5	8	6	233	38	2,253
	Acute Flaccid Paralysis (excluding Acute poliomyelitis)		1			8	1	139
	Acute encephalitis(excluding JE and WNE)	1	1		3	64	14	657
	Cryptosporidiosis					3		25
	Creutzfeldt-Jakob disease	1				25	3	219
	Severe invasive streptococcal infections(TSLs)	1	1	1	1	86	11	687
	Acquired immunodeficiency syndrome (AIDS)	9	8	12	10	421	12	1,292
	Giardiasis					19	1	68
	Invasive <i>Haemophilus influenzae</i> disease	1		2		40	10	483
	Invasive meningococcal disease					6	2	37
	Invasive pneumococcal disease	12	7	8	13	398	54	3,299
	Varicella (limited to hospitalized case)		2	1	3	60	12	461
	Congenital rubella syndrome							
	Syphilis	40	39	30	32	1,768	64	6,923
	Disseminated cryptococcosis					18	2	178
	Tetanus					8	3	130
	Vancomycin-resistant <i>S. aureus</i> infection							
	Vancomycin-resistant <i>Enterococcus</i> infection			1		7	2	79
	Pertussis	105	67	79	70	2,429	234	11,947
Rubella	28	33	26	20	945	84	2,917	
Measles	1		1		21	6	282	
MDRA infection					4	1	24	

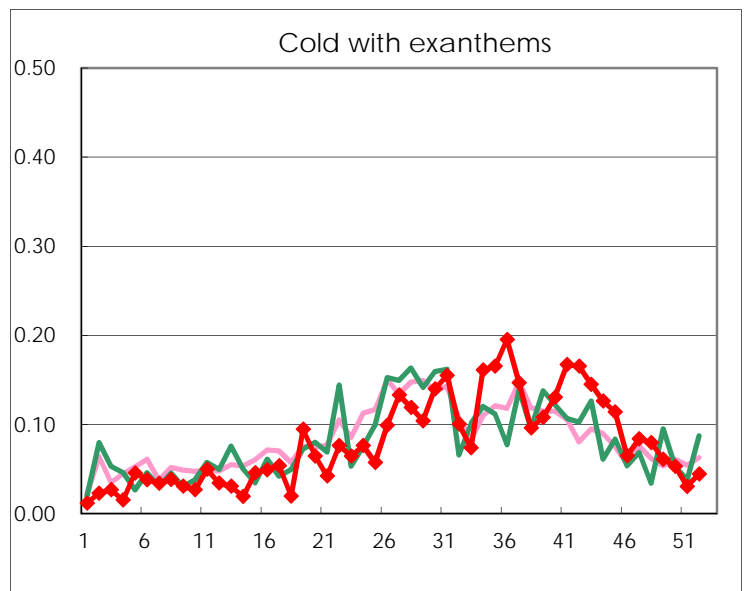
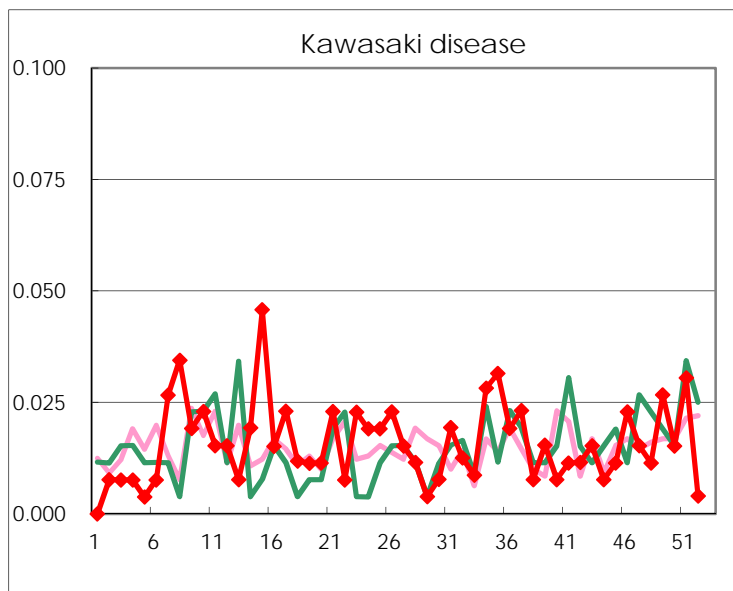
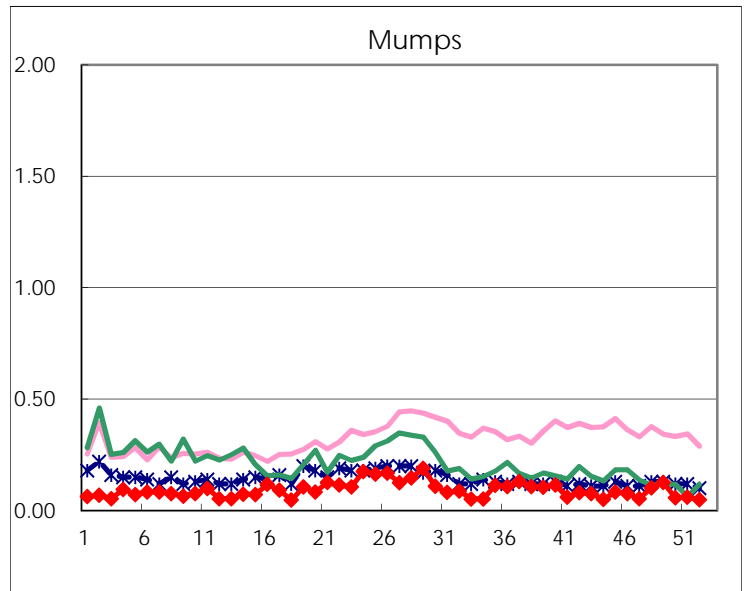
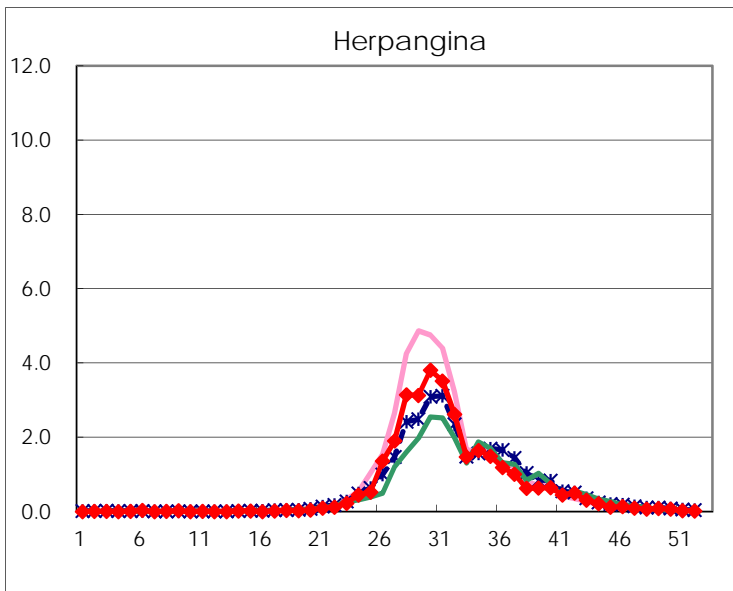
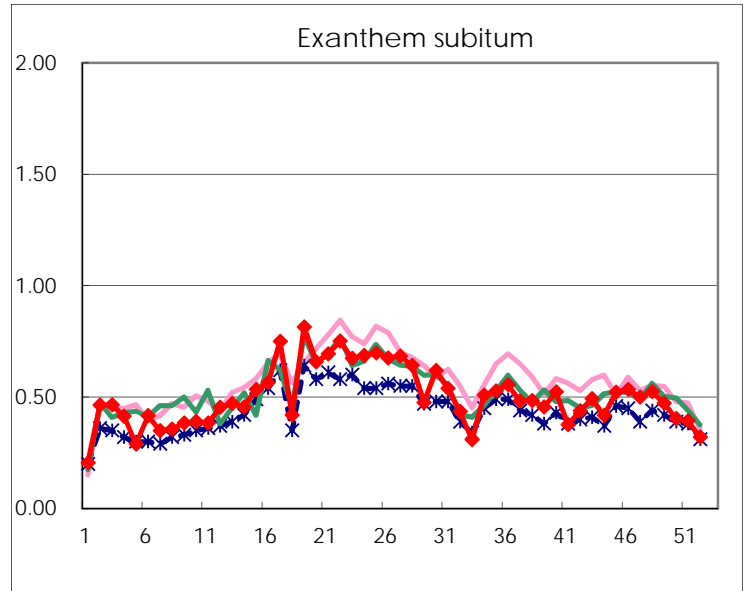
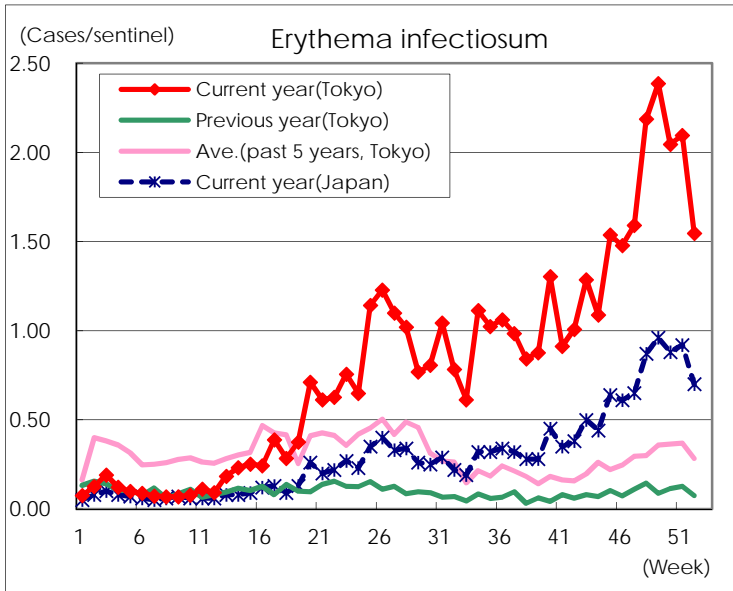
Number of patients with the diseases to be reported
by the designated clinics and hospitals

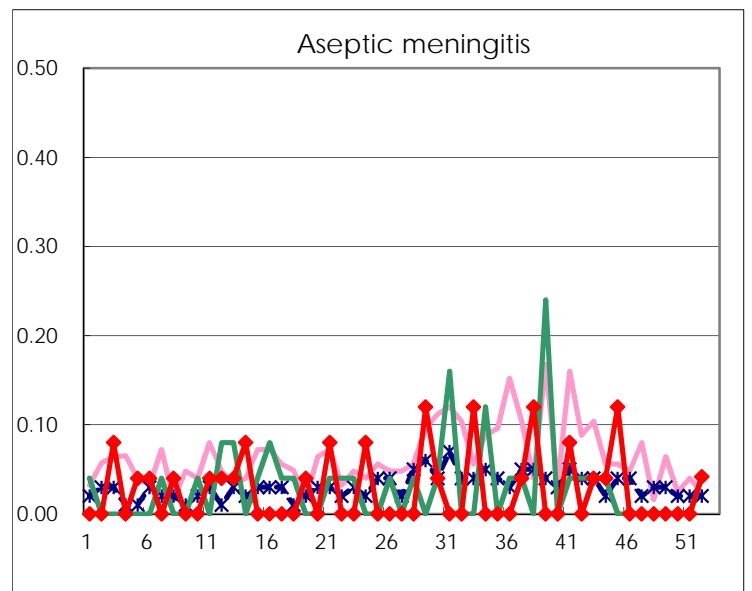
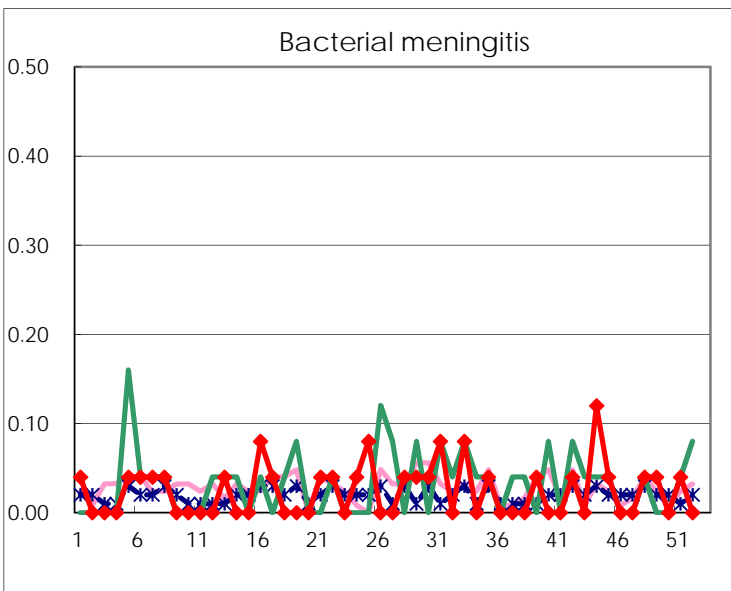
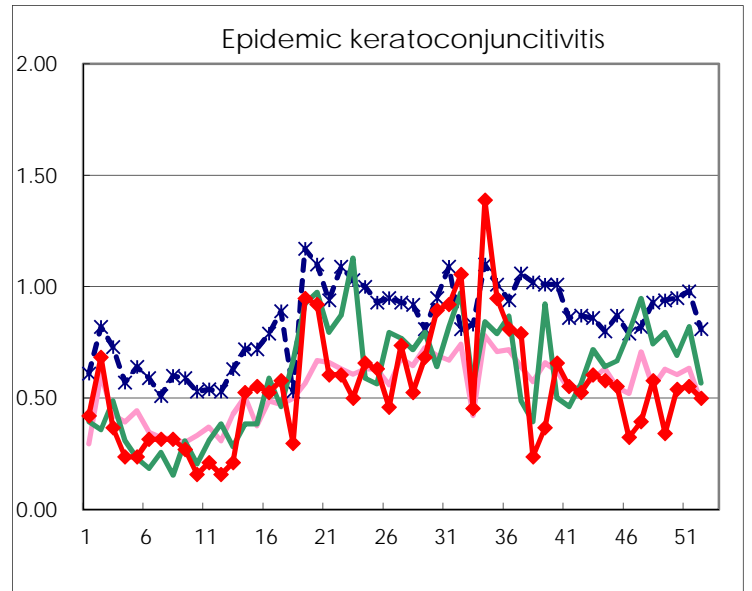
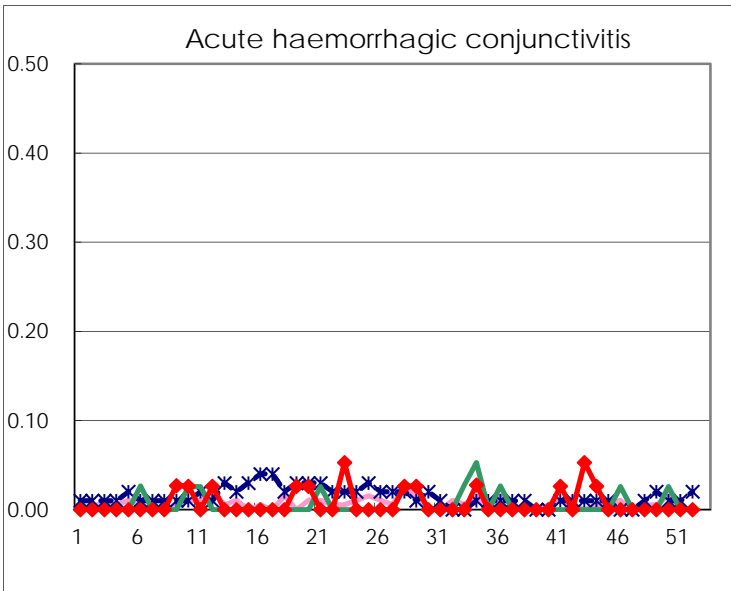
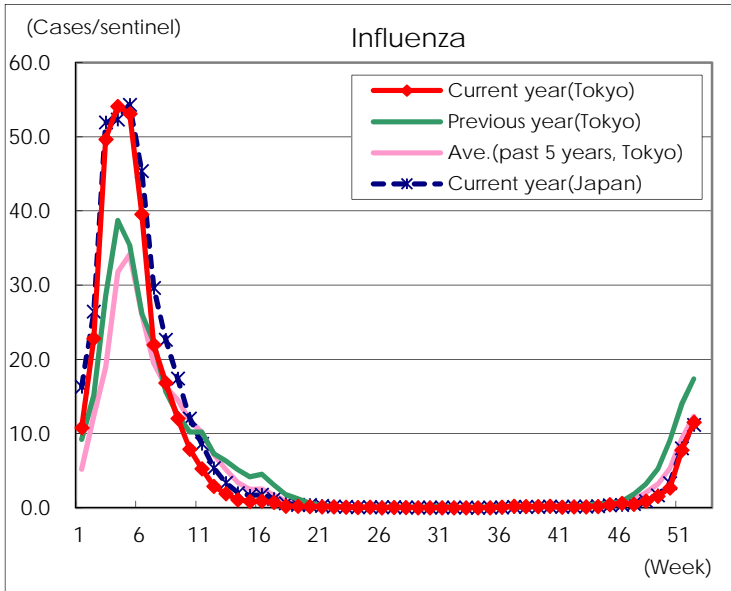
Diseases	Tokyo				
	49th	50th	51st	52nd	/sentinel
Respiratory syncytial virus infection	64	72	64	46	0.19
Pharyngoconjunctival fever	126	138	106	73	0.30
Group A streptococcal pharyngitis	914	856	940	537	2.17
Infectious gastroenteritis	3,151	3,319	3,573	2,420	9.80
Chickenpox	146	202	175	141	0.57
Hand, foot, and mouth disease	214	209	181	81	0.33
Erythema infectiosum	625	538	549	382	1.55
Exanthem subitum	124	106	103	79	0.32
Herpangina	22	18	8	5	0.02
Mumps	33	15	16	12	0.05
Kawasaki disease	7	4	8	1	
Cold with exanthems	16	14	8	11	0.04
Influenza	654	1,117	3,233	4,496	11.53
Acute hemorrhagic conjunctivitis					
Epidemic keratoconjunctivitis	13	20	21	16	0.50
Bacterial meningitis	1		1		
Aseptic meningitis				1	0.04
<i>Mycoplasma pneumoniae</i>	8	7	17	6	0.25
Chlamydial pneumonia (excluding psittacosis)			1		
Infectious gastroenteritis (only by Rotavirus)		1	2		
Influenza-Associated Hospitalizations	3	5	20	32	1.33

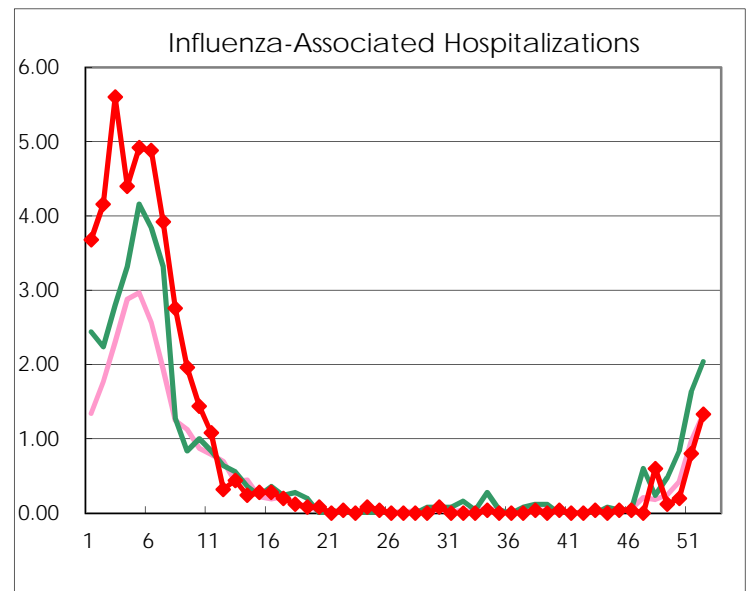
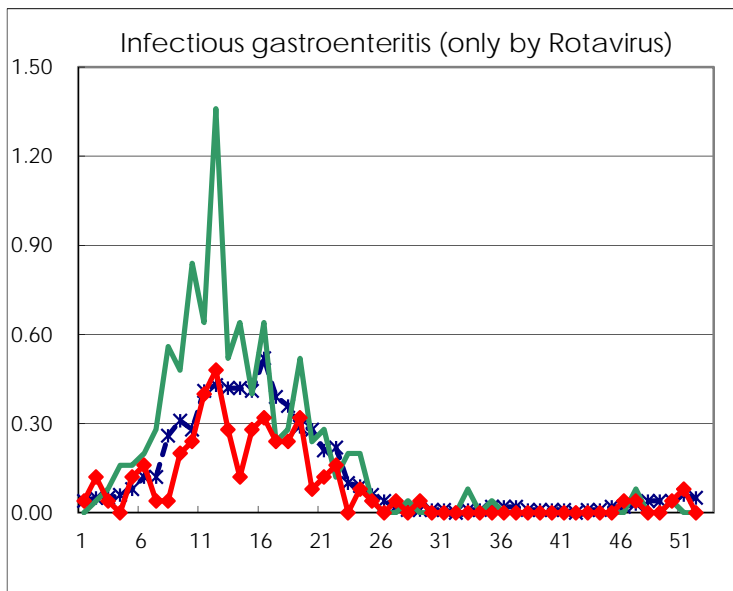
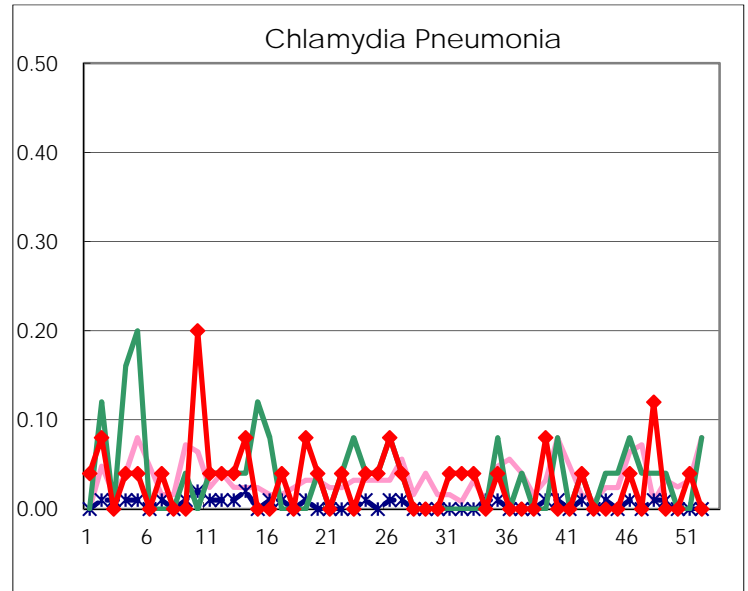
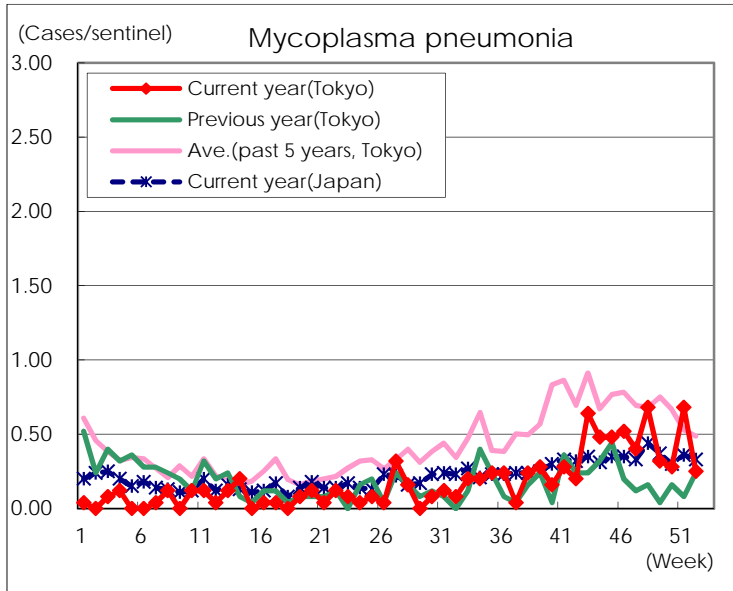
(Blank means 0.)

Disease Trend Graph (weekly reported cases per sentinel in comparison)









Number of sentinel facilities for weekly reporting		
Types of sentinels	Number of sentinels	Sentinels having reported
Pediatric	264	247
Influenza	419	390
Ophthalmic	39	32
Specially-designated	25	24