

12 September 2019 / Number 36

Surveillance System in Tokyo, Japan

The infectious diseases which all physicians must report

All physicians must report to health centers the incidence of the diseases which are shown at page one. Health centers electronically report the individual cases to Tokyo Metropolitan Infectious Disease Surveillance Center.

The infectious diseases required to be reported by the sentinels

The numbers of patients who visit the sentinel clinics or hospitals during a week are reported to health centers in Tokyo. And they electronically report the numbers to Tokyo Metropolitan Infectious Disease Surveillance Center. We have about 500 sentinel clinics and hospitals in Tokyo.

Tokyo Metropolitan Institute of Public Health

TEL:81-3-3363-3213 FAX:81-3-5332-7365

e-mail:www@tokyo-eiken.go.jp

URL:idsc.tokyo-eiken.go.jp/

Number of patients with the diseases which all physicians must report

Category	Diseases	Tokyo					Japan	
		33rd	34th	35th	36th	Cum 2019	36th	Cum 2019
I	Ebola hemorrhagic fever							
	Crimean-Congo hemorrhagic fever							
	Smallpox							
	South American hemorrhagic fever							
	Plague							
	Marburg disease							
	Lassa fever							
II	Acute poliomyelitis							
	Tuberculosis	39	83	59	47	2,187	326	14,786
	Diphtheria							
	Severe Acute Respiratory Syndrome(SARS)							
	Middle East Respiratory Syndrome (MERS)							
	Avian influenza H5N1							
	Avian influenza H7N9							
III	Cholera					2	1	4
	Shigellosis	1				14	4	68
	Enterohemorrhagic Escherichia coli infection	11	18	15	24	248	153	2,546
	Typhoid fever					3		28
	Paratyphoid fever					3	1	12
IV	Hepatitis E	3	3	1	6	93	7	363
	West Nile fever							
	Hepatitis A	3	6	4	4	114	5	333
	Echinococcosis							14
	Yellow fever							
	Psittacosis					3		12
	Omsk hemorrhagic fever							
	Relapsing fever						1	3
	Kyasanur forest disease							
	Q fever							
	Rabies							
	Coccidioidomycosis							2
	Monkeypox							
	Zika virus infection						1	1
	Severe Fever with Thrombocytopenia Syndrome					1	2	73
	Hemorrhagic fever with renal syndrome							
	Western equine encephalitis							
	Tick-borne encephalitis							
	Anthrax							
	Chikungunya fever				1	3	2	26
	Scrub typhus(Tsutsugamushi disease)							83
	Dengue fever	7	6	6	4	83	24	307
	Eastern equine encephalitis							
	Avian influenza (excluding H5N1 and H7N9)							
	Nipah virus infection							
	Japanese spotted fever						7	162
	Japanese encephalitis							
	Hantavirus pulmonary syndrome							
	Herpes B virus infection							
	Glanders							
	Brucellosis					1		2
	Venezuelan equine encephalitis							
	Hendra virus infection							
Epidemic typhus								
Botulism							1	
Malaria	1		1	2	12	3	41	
Tularemia								
Lyme disease							9	
Lyssavirus infection(excluding rabies)								
Rift valley fever								
Melioidosis							1	
Legionellosis	5	5	6	2	129	59	1,581	
Leptospirosis		1	1		3	1	11	
Rocky mountain spotted fever								

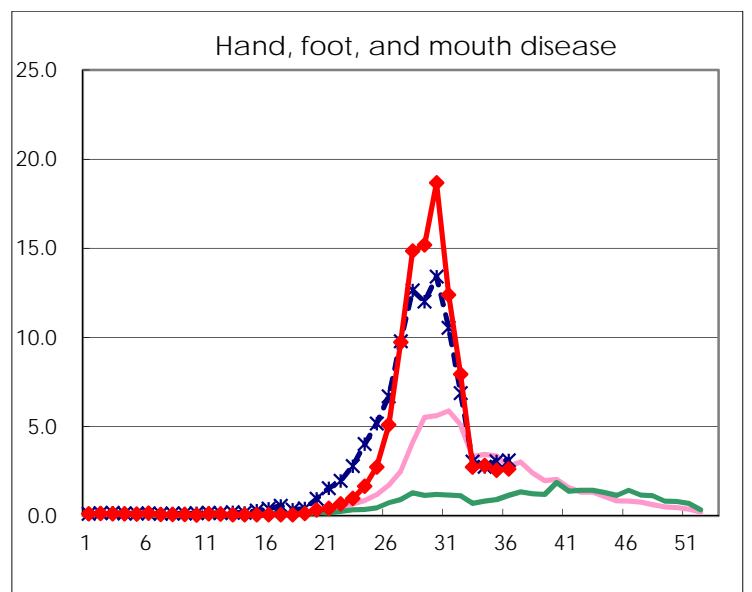
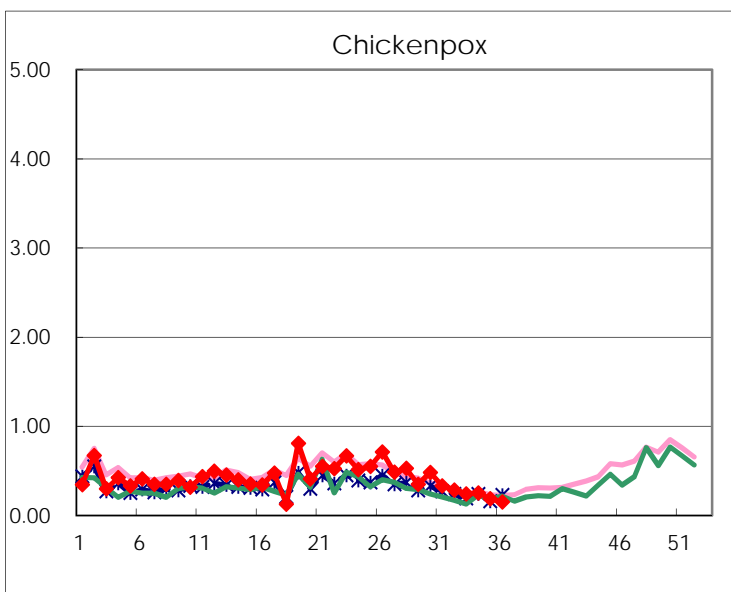
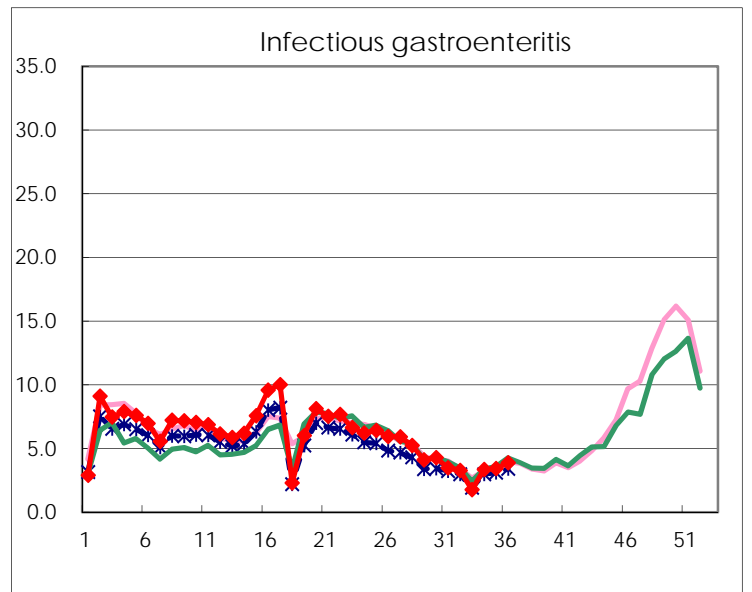
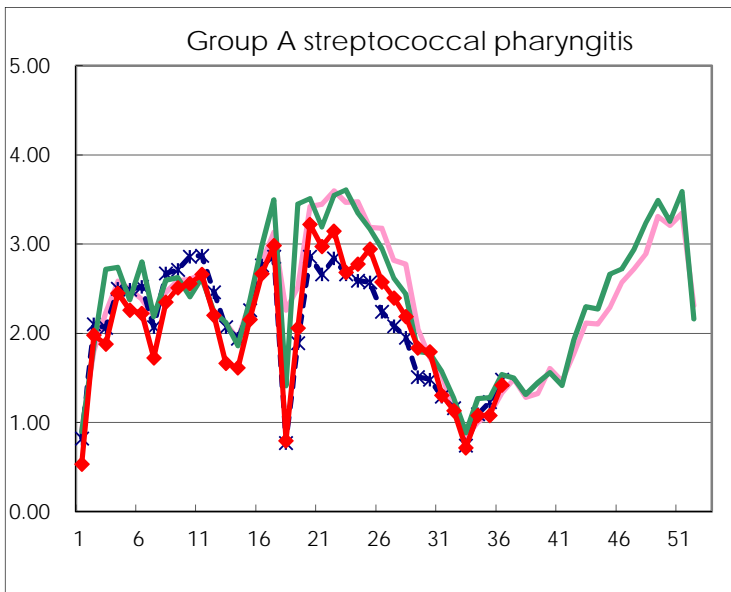
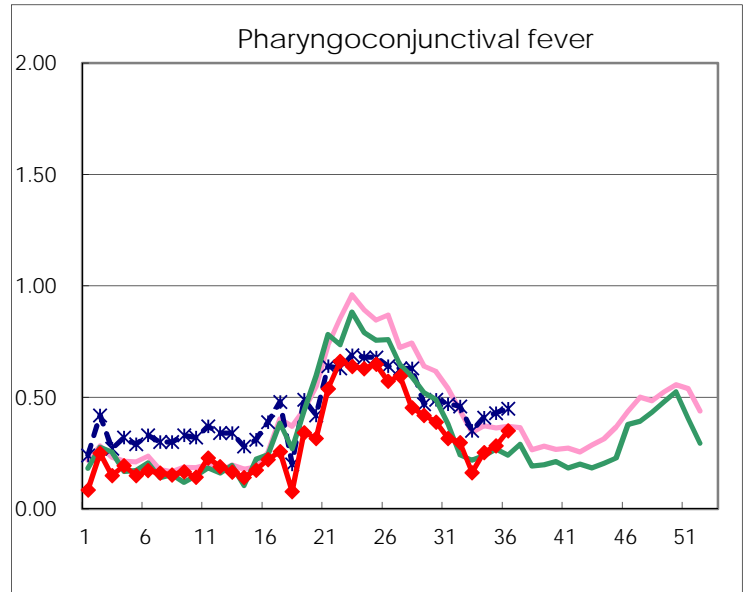
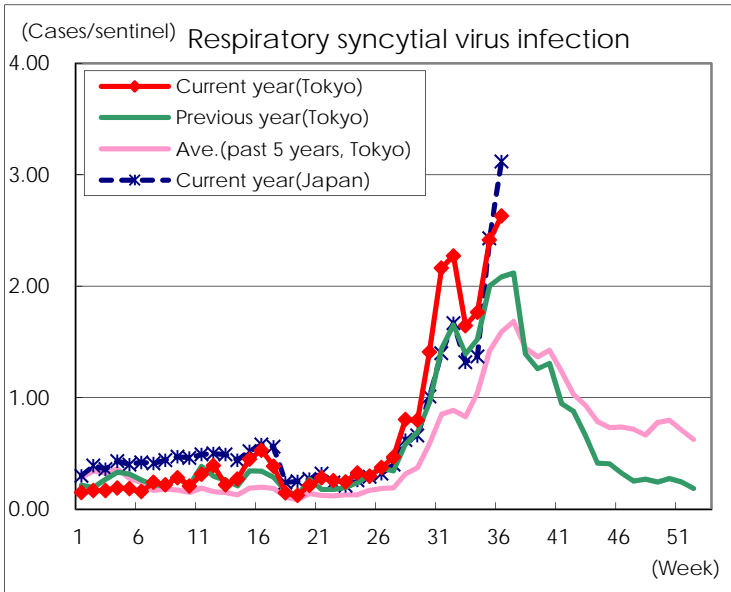
Category	Diseases	Tokyo					Japan	
		33rd	34th	35th	36th	Cum 2019	36th	Cum 2019
V	Amebiasis	1	4	1	3	117	13	603
	Viral hepatitis(excluding hepatitis A and E)	6	2	2	1	70	1	228
	CRE infection	4	6	5	5	134	33	1,455
	Acute Flaccid Paralysis (excluding Acute poliomyelitis)					3	2	57
	Acute encephalitis(excluding JE and WNE)	1	3	1	1	59	16	635
	Cryptosporidiosis			1	1	4		14
	Creutzfeldt-Jakob disease	1				13	1	128
	Severe invasive streptococcal infections(TSLs)	1	2	3		89	10	654
	Acquired immunodeficiency syndrome (AIDS)	5	4	9	8	270	10	813
	Giardiasis	1		1		5	1	33
	Invasive <i>Haemophilus influenzae</i> disease	1	3		1	63	8	410
	Invasive meningococcal disease					2	1	33
	Invasive pneumococcal disease	3	4	6	8	274	19	2,351
	Varicella (limited to hospitalized case)			2	3	49	2	336
	Congenital rubella syndrome					1		3
	Syphilis	27	40	33	31	1,199	73	4,566
	Disseminated cryptococcosis					9	4	102
	Tetanus					5		91
	Vancomycin-resistant <i>S. aureus</i> infection							
	Vancomycin-resistant <i>Enterococcus</i> infection					5		52
	Pertussis	11	19	30	24	1,018	261	11,953
	Rubella	14	13	9	7	824	16	2,176
Measles	1			1	105	4	682	
MDRA infection					2		22	

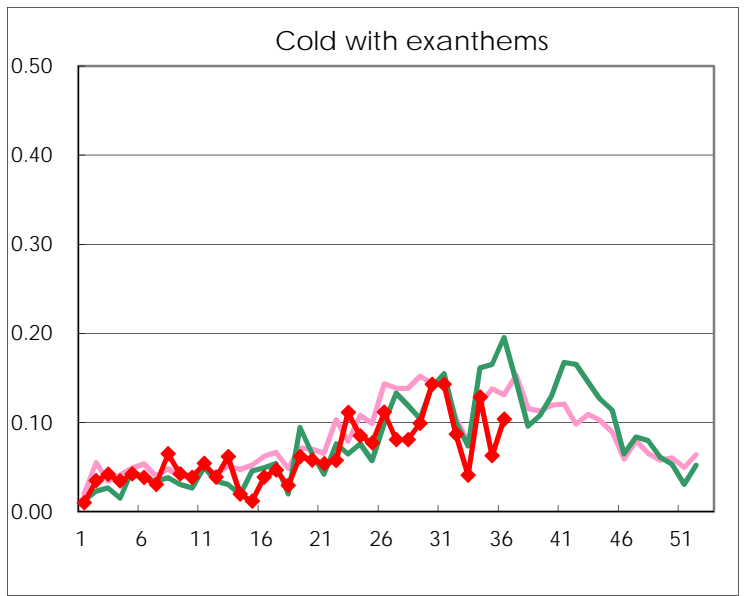
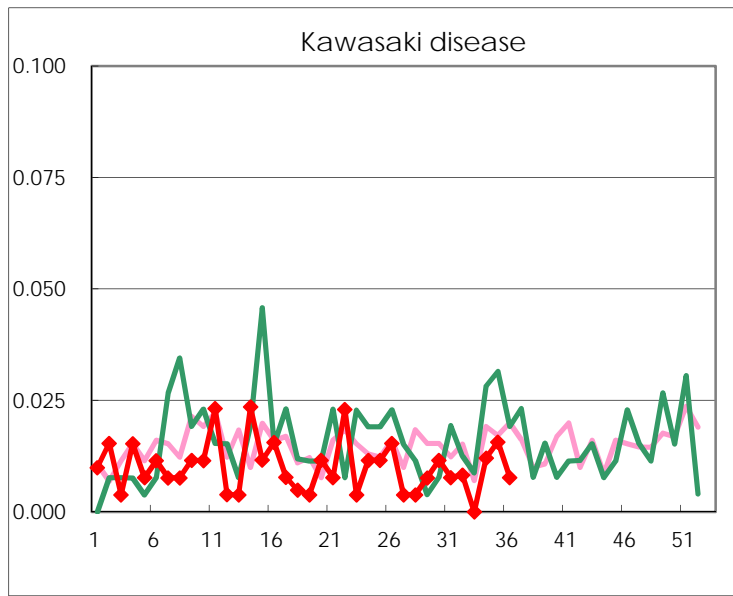
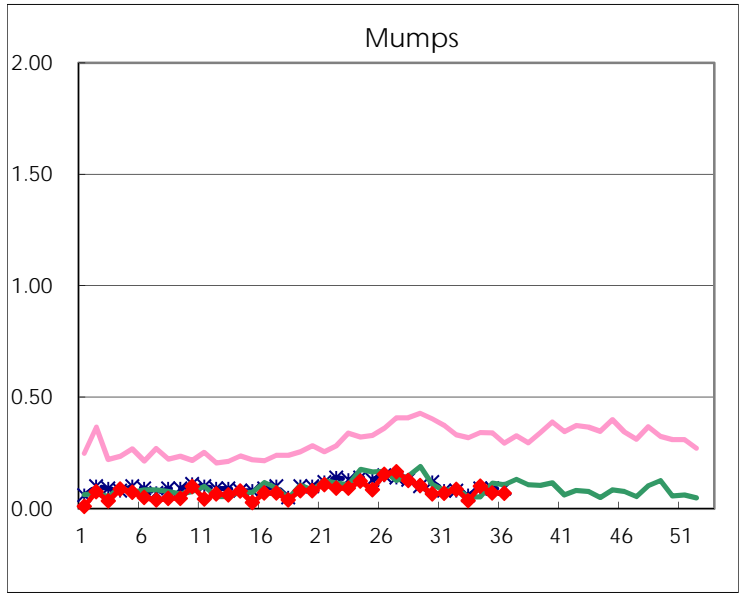
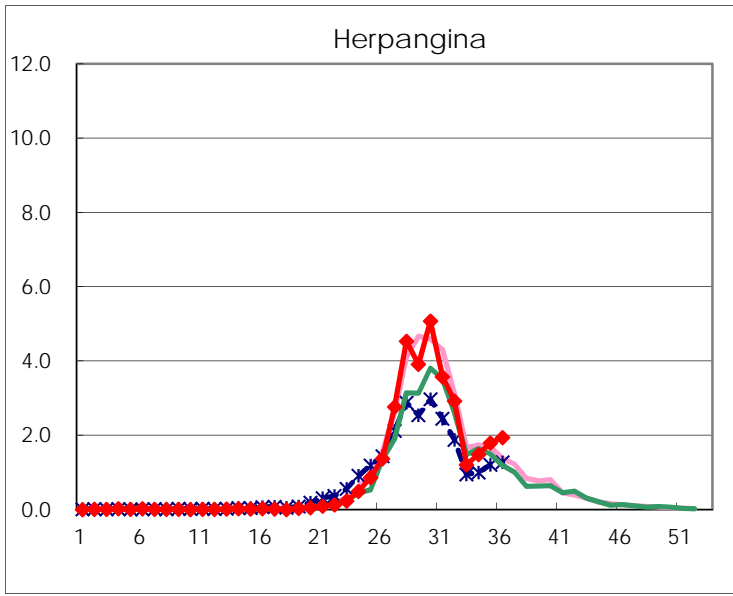
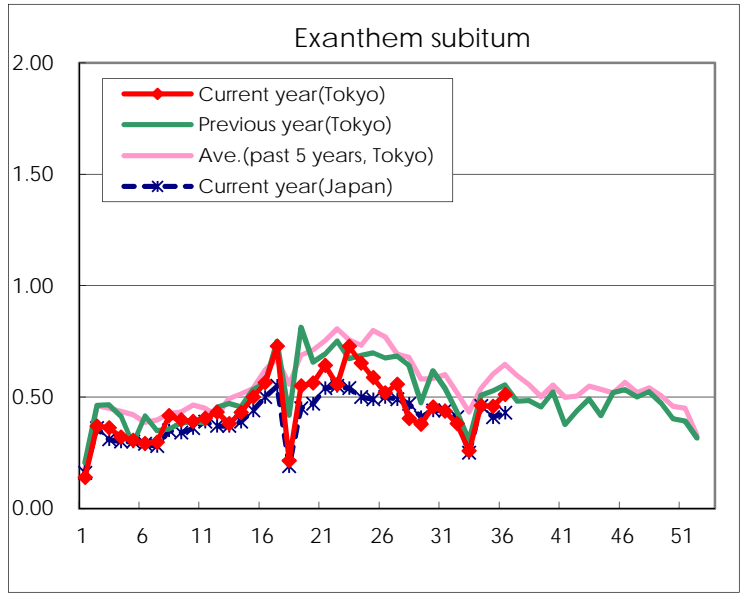
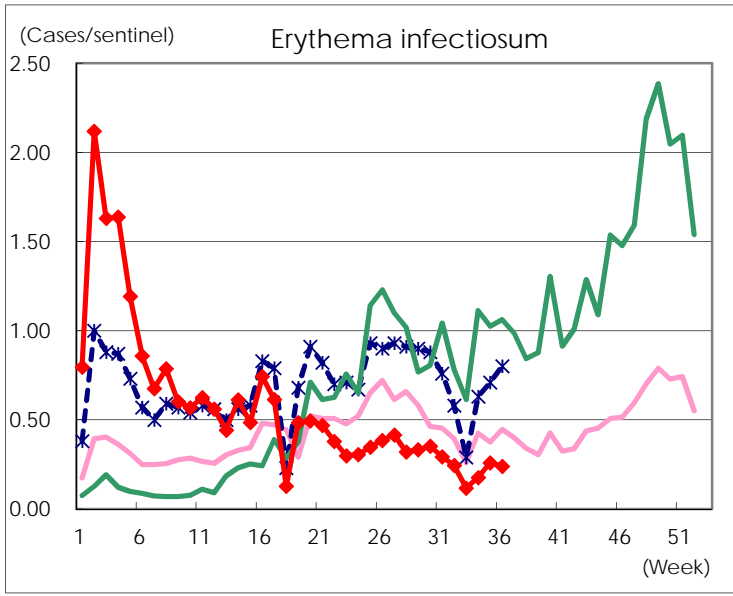
Number of patients with the diseases to be reported
by the designated clinics and hospitals

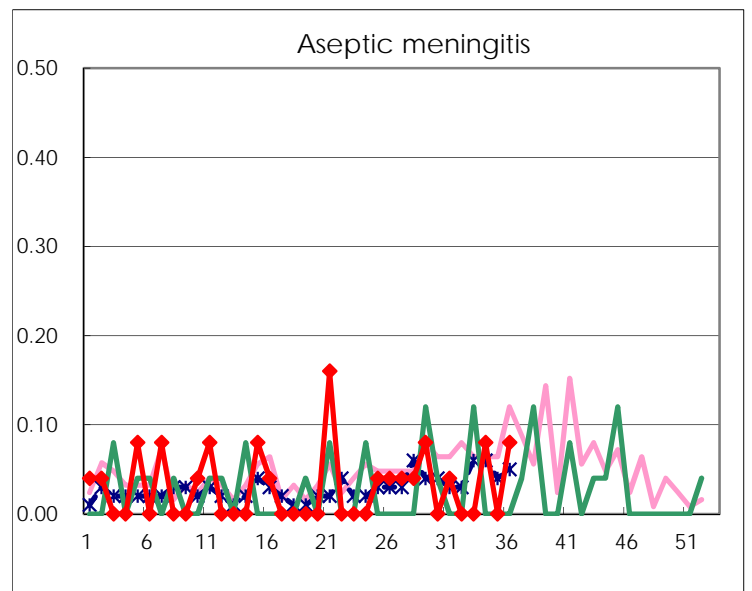
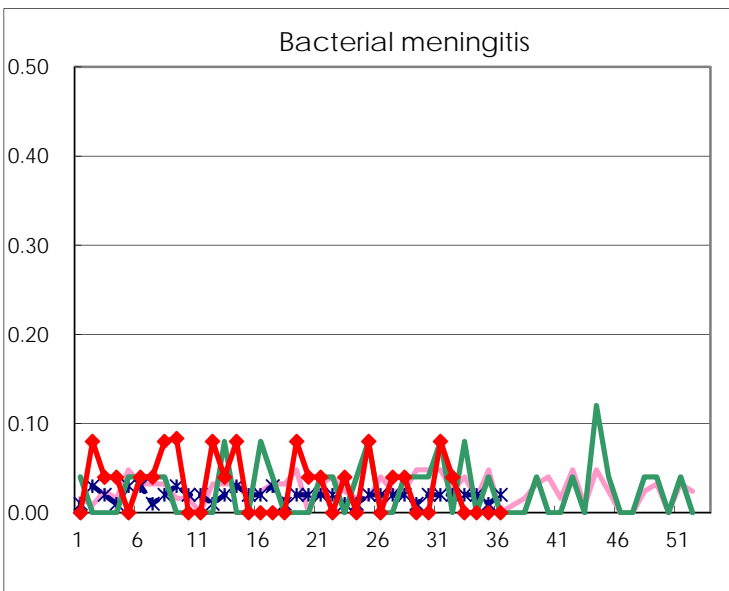
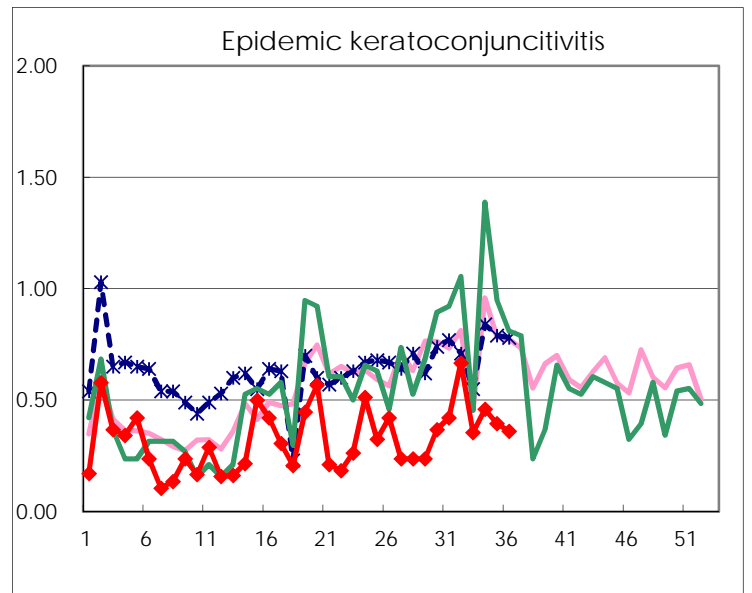
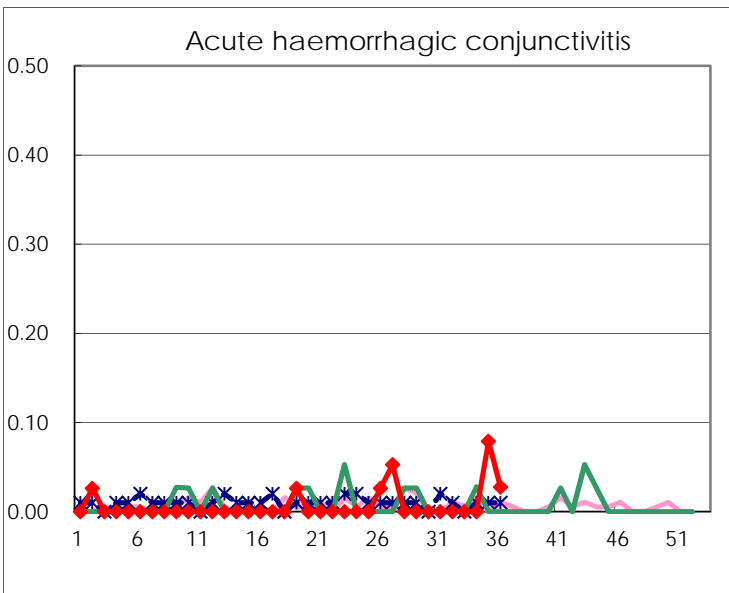
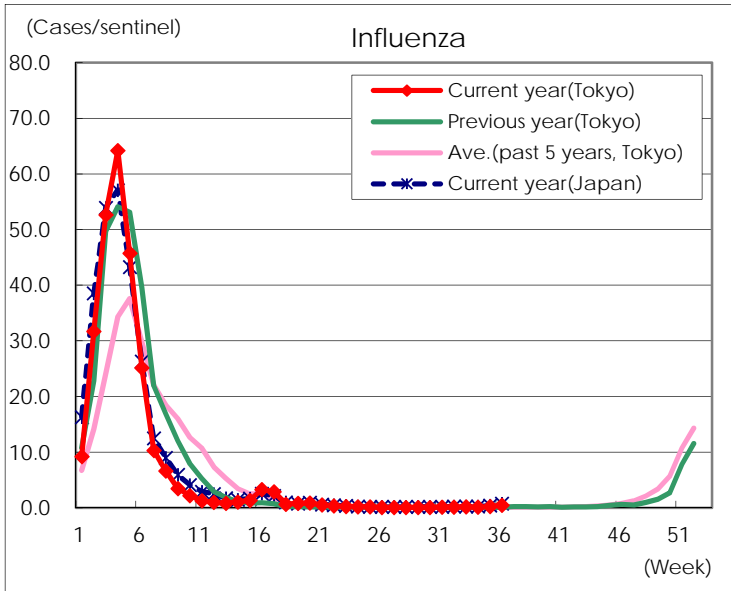
Diseases	Tokyo				
	33rd	34th	35th	36th	/sentinel
Respiratory syncytial virus infection	364	440	616	684	2.63
Pharyngoconjunctival fever	36	63	72	91	0.35
Group A streptococcal pharyngitis	158	268	275	369	1.42
Infectious gastroenteritis	389	835	872	1,007	3.87
Chickenpox	53	63	48	39	0.15
Hand, foot, and mouth disease	605	703	649	682	2.62
Erythema infectiosum	26	44	66	62	0.24
Exanthem subitum	57	115	117	133	0.51
Herpangina	267	370	458	505	1.94
Mumps	8	25	18	18	0.07
Kawasaki disease		3	4	2	0.01
Cold with exanthems	9	32	16	27	0.10
Influenza	61	51	100	202	0.49
Acute hemorrhagic conjunctivitis			3	1	0.03
Epidemic keratoconjunctivitis	11	17	15	13	0.36
Bacterial meningitis					
Aseptic meningitis		2		2	0.08
<i>Mycoplasma pneumoniae</i>	4	5	10	12	0.48
Chlamydial pneumonia (excluding psittacosis)				1	0.04
Infectious gastroenteritis (only by Rotavirus)				1	0.04
Influenza-Associated Hospitalizations	2	1	2		

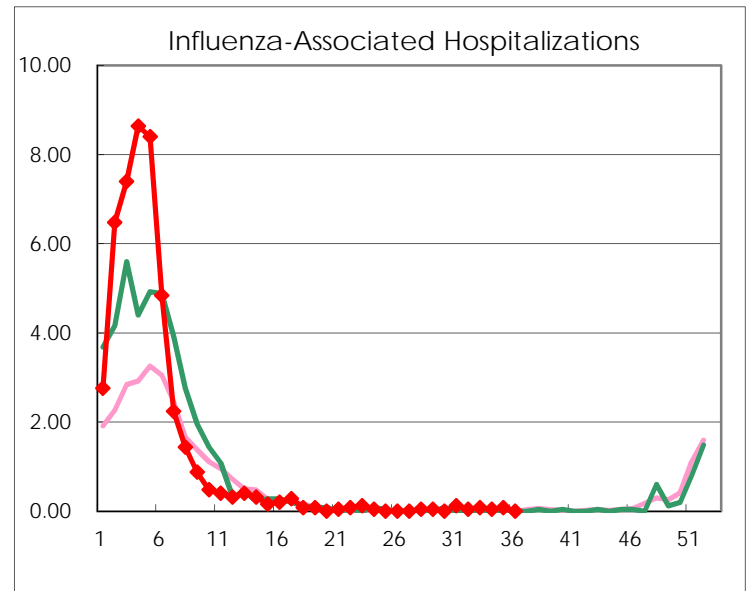
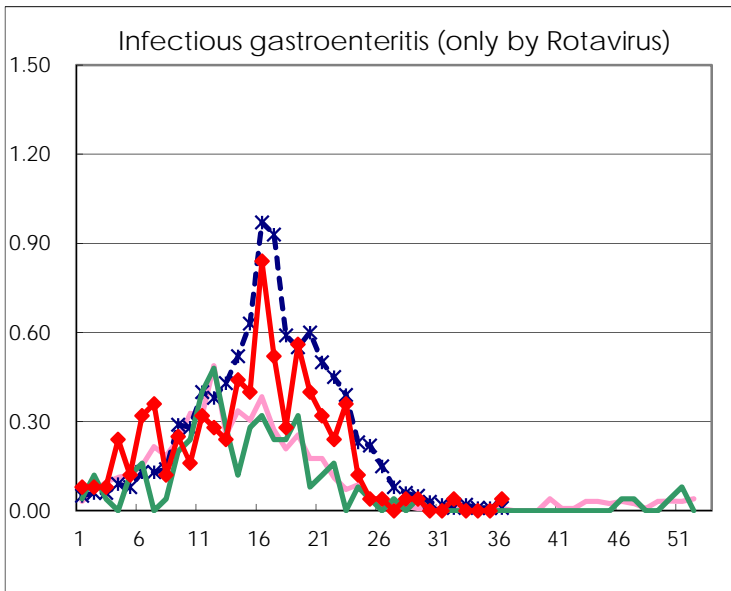
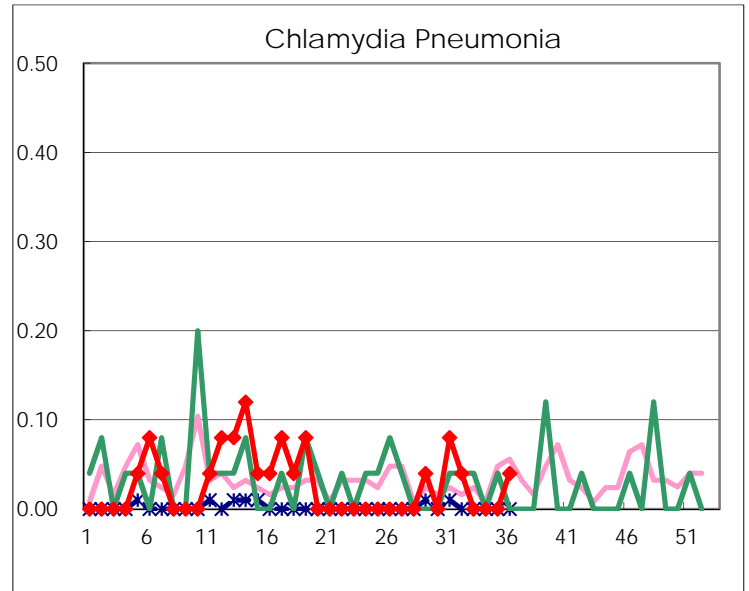
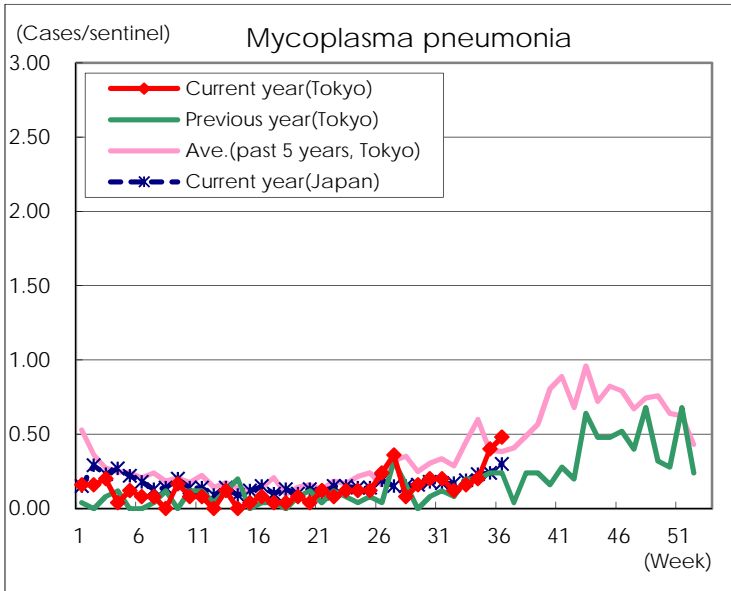
(Blank means 0.)

Disease Trend Graph (weekly reported cases per sentinel in comparison)









Number of sentinel facilities for weekly reporting		
Types of sentinels	Number of sentinels	Sentinels having reported
Pediatric	264	260
Influenza	419	413
Ophthalmic	39	36
Specially-designated	25	25