

26 December 2019 / Number 51

Surveillance System in Tokyo, Japan

The infectious diseases which all physicians must report

All physicians must report to health centers the incidence of the diseases which are shown at page one. Health centers electronically report the individual cases to Tokyo Metropolitan Infectious Disease Surveillance Center.

The infectious diseases required to be reported by the sentinels

The numbers of patients who visit the sentinel clinics or hospitals during a week are reported to health centers in Tokyo. And they electronically report the numbers to Tokyo Metropolitan Infectious Disease Surveillance Center. We have about 500 sentinel clinics and hospitals in Tokyo.

Tokyo Metropolitan Institute of Public Health

TEL:81-3-3363-3213 FAX:81-3-5332-7365

e-mail:www@tokyo-eiken.go.jp

URL:idsc.tokyo-eiken.go.jp/

Number of patients with the diseases which all physicians must report

Category	Diseases	Tokyo					Japan	
		48th	49th	50th	51st	Cum 2019	51st	Cum 2019
I	Ebola hemorrhagic fever							
	Crimean-Congo hemorrhagic fever							
	Smallpox							
	South American hemorrhagic fever							
	Plague							
	Marburg disease							
	Lassa fever							
II	Acute poliomyelitis							
	Tuberculosis	64	61	56	33	3,078	272	20,625
	Diphtheria							
	Severe Acute Respiratory Syndrome(SARS)							
	Middle East Respiratory Syndrome (MERS)							
	Avian influenza H5N1							
	Avian influenza H7N9							
III	Cholera					2		5
	Shigellosis	2	1		1	27	4	136
	Enterohemorrhagic Escherichia coli infection	3	3	6		383	18	3,705
	Typhoid fever					3		35
	Paratyphoid fever					4	2	21
IV	Hepatitis E	3	2	3	3	127	8	479
	West Nile fever							
	Hepatitis A		2		1	141		420
	Echinococcosis						1	23
	Yellow fever							
	Psittacosis					3		13
	Omsk hemorrhagic fever							
	Relapsing fever							7
	Kyasanur forest disease							
	Q fever							2
	Rabies							
	Coccidioidomycosis							2
	Monkeypox							
	Zika virus infection							3
	Severe Fever with Thrombocytopenia Syndrome					1		101
	Hemorrhagic fever with renal syndrome							
	Western equine encephalitis							
	Tick-borne encephalitis							
	Anthrax							
	Chikungunya fever				2	11	3	49
	Scrub typhus(Tsutsugamushi disease)		1	2	4	11	42	366
	Dengue fever	3	1		2	130	5	456
	Eastern equine encephalitis							
	Avian influenza (excluding H5N1 and H7N9)							
	Nipah virus infection							
	Japanese spotted fever						1	316
	Japanese encephalitis							8
	Hantavirus pulmonary syndrome							
	Herpes B virus infection							1
	Glanders							
	Brucellosis					1		2
	Venezuelan equine encephalitis							
	Hendra virus infection							
Epidemic typhus								
Botulism							3	
Malaria	1	1			21	1	56	
Tularemia								
Lyme disease					1		17	
Lyssavirus infection(excluding rabies)								
Rift valley fever								
Melioidosis							2	
Legionellosis	2	4	1	2	183	34	2,292	
Leptospirosis					9		31	
Rocky mountain spotted fever								

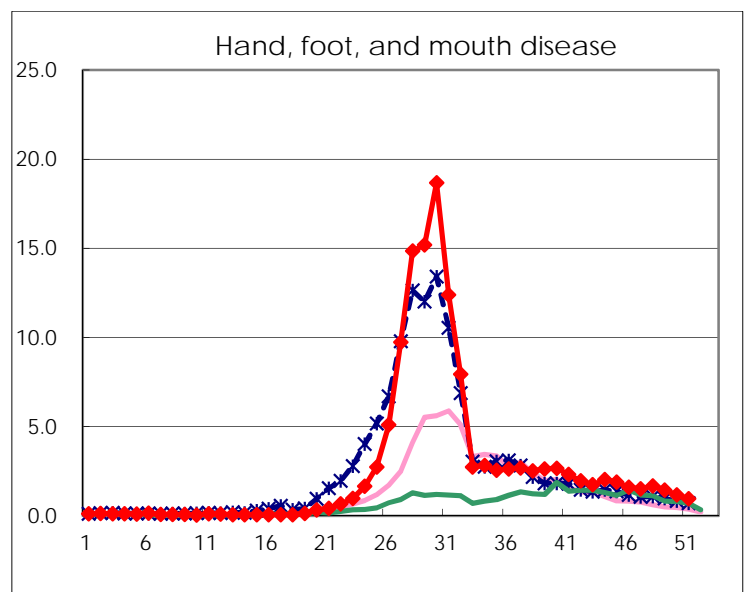
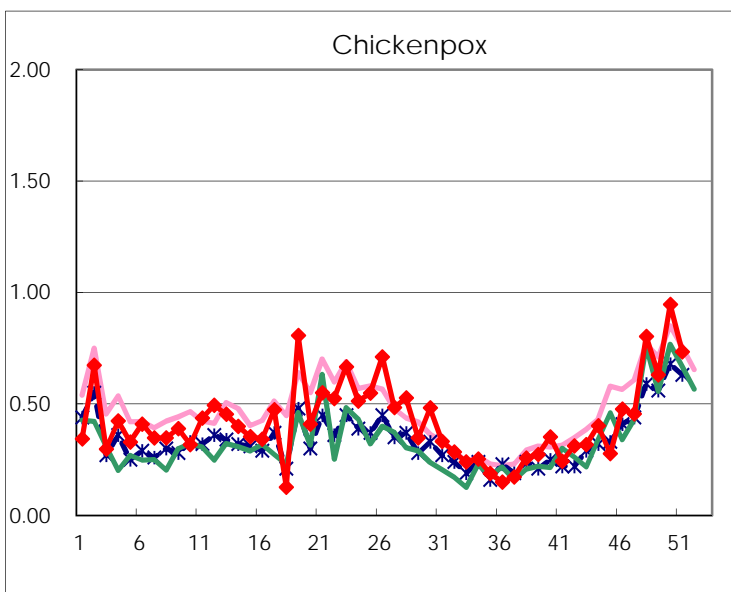
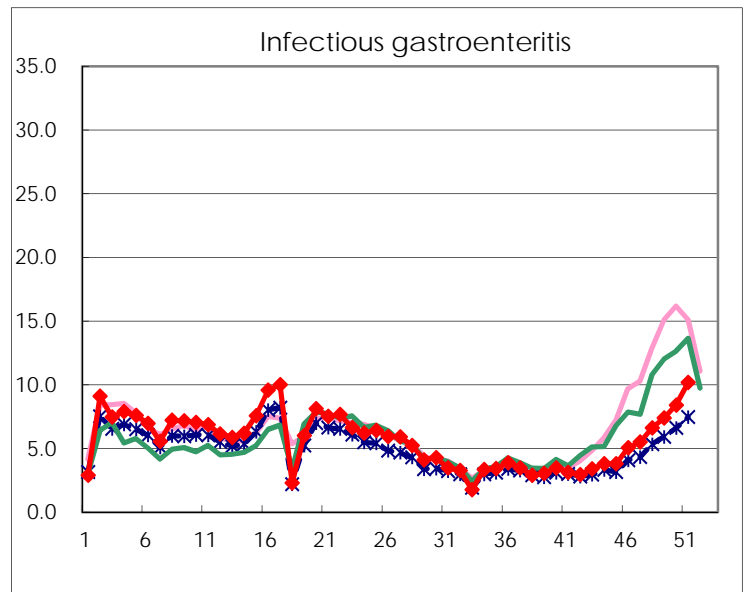
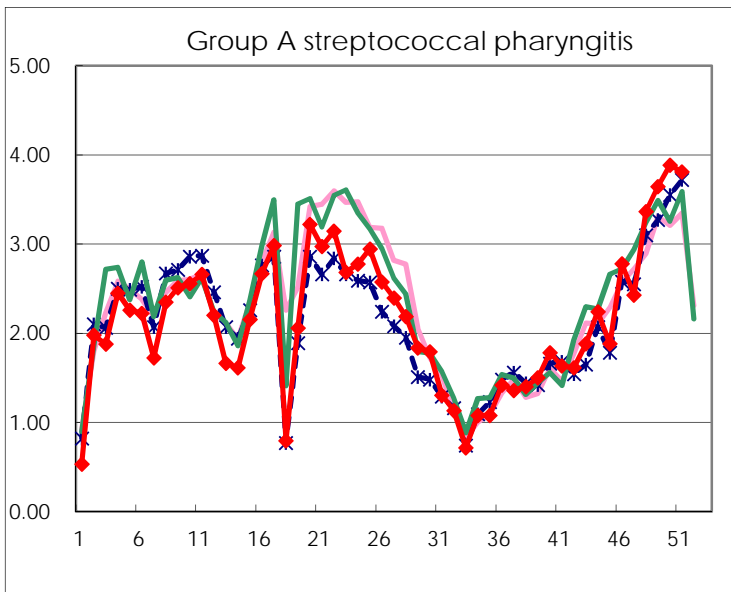
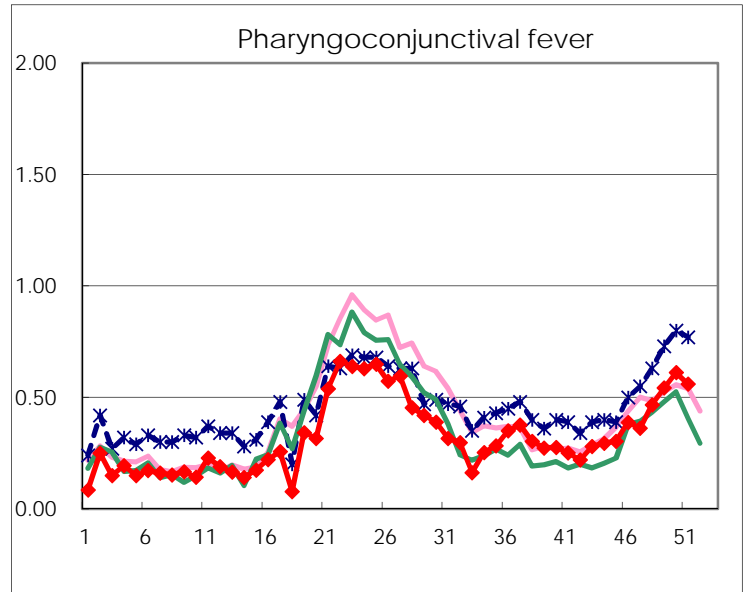
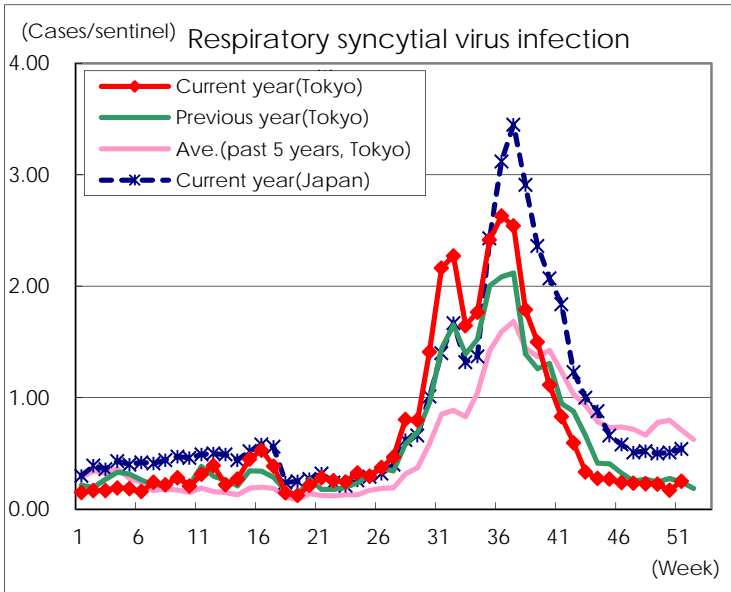
Category	Diseases	Tokyo					Japan	
		48th	49th	50th	51st	Cum 2019	51st	Cum 2019
V	Amebiasis	1	2	2	3	154	13	826
	Viral hepatitis(excluding hepatitis A and E)		3	1	2	97	3	322
	CRE infection	9	4	3	7	230	40	2,244
	Acute Flaccid Paralysis (excluding Acute poliomyelitis)			2		7	1	77
	Acute encephalitis(excluding JE and WNE)	2	3	3		80	24	890
	Cryptosporidiosis					4		19
	Creutzfeldt-Jakob disease					17	2	185
	Severe invasive streptococcal infections(TSLS)	2	3	3	2	121	14	907
	Acquired immunodeficiency syndrome (AIDS)	5	9	8	8	388	16	1,187
	Giardiasis		1	1		11	1	51
	Invasive <i>Haemophilus influenzae</i> disease			1	3	82	9	523
	Invasive meningococcal disease				1	5	2	48
	Invasive pneumococcal disease	11	8	7	10	366	61	3,195
	Varicella (limited to hospitalized case)	1	1	6	1	77	3	472
	Congenital rubella syndrome					2		4
	Syphilis	38	38	29	18	1,676	65	6,435
	Disseminated cryptococcosis	1				12	3	151
	Tetanus					8	2	122
	Vancomycin-resistant <i>S. aureus</i> infection							
	Vancomycin-resistant <i>Enterococcus</i> infection					8	4	78
	Pertussis	24	18	13	17	1,330	160	16,545
	Rubella	2	2	2		860	6	2,294
Measles		2	1		124	1	743	
MDRA infection					2		25	

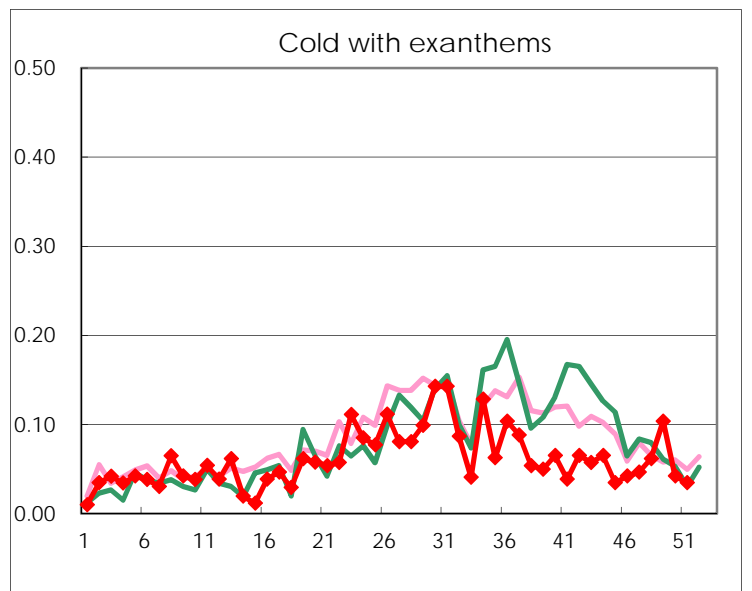
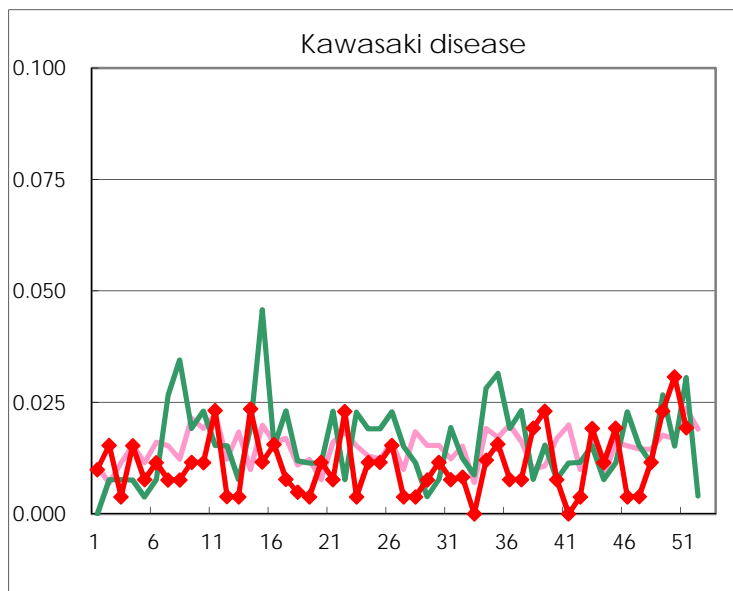
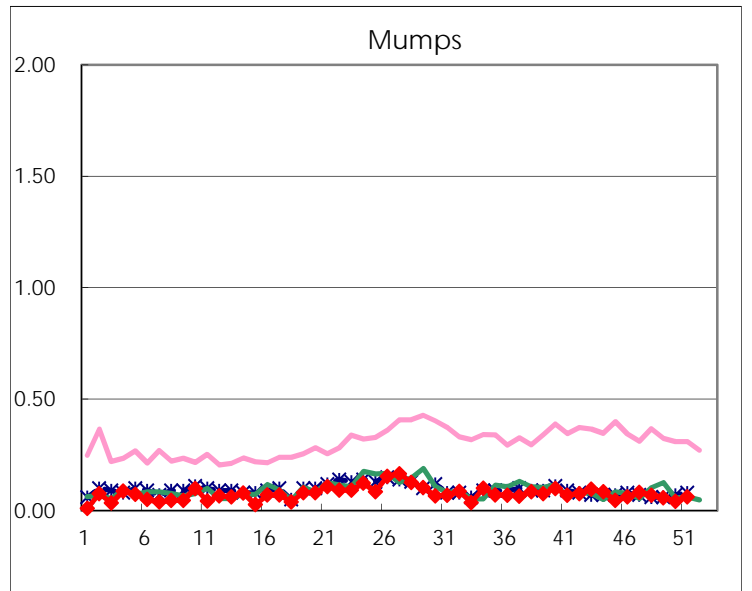
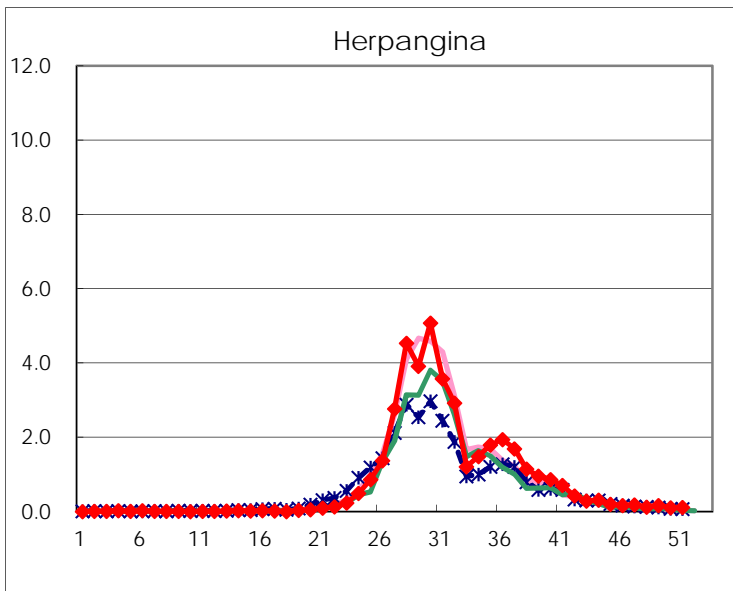
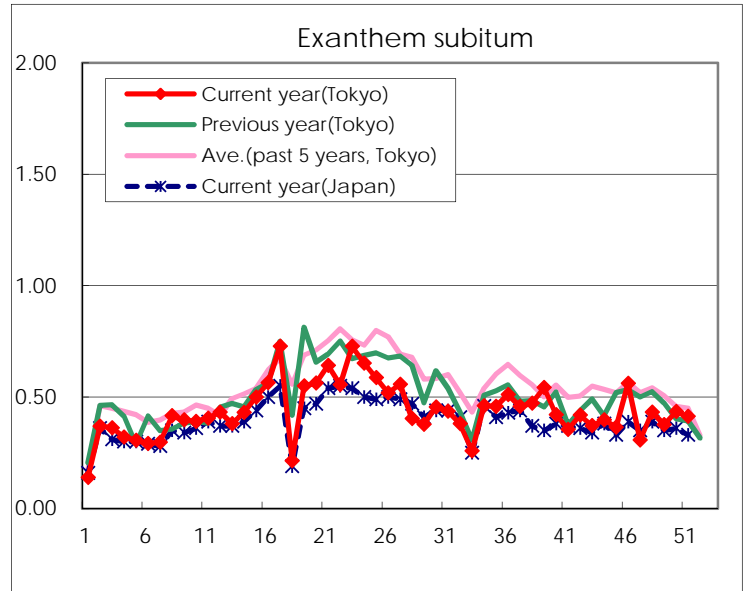
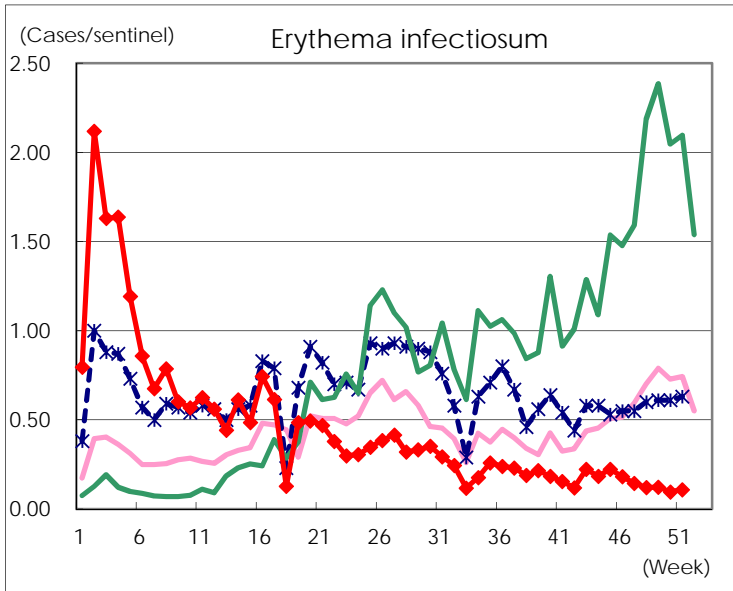
Number of patients with the diseases to be reported
by the designated clinics and hospitals

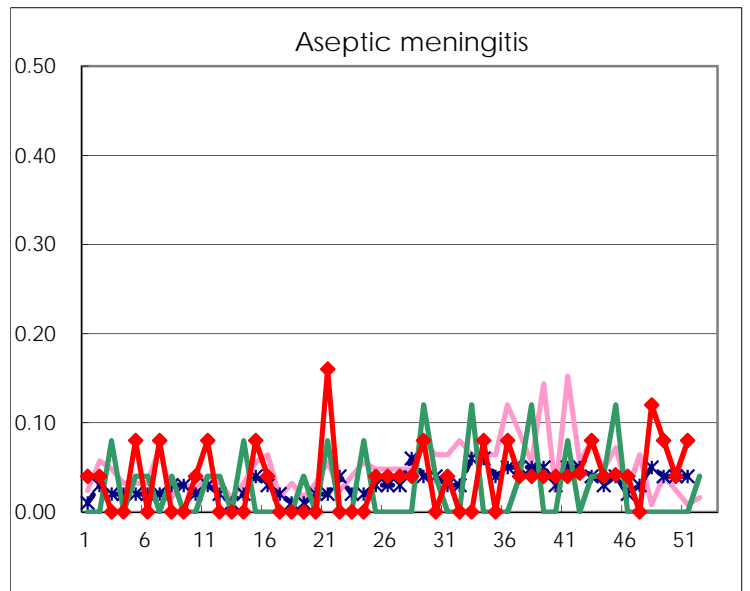
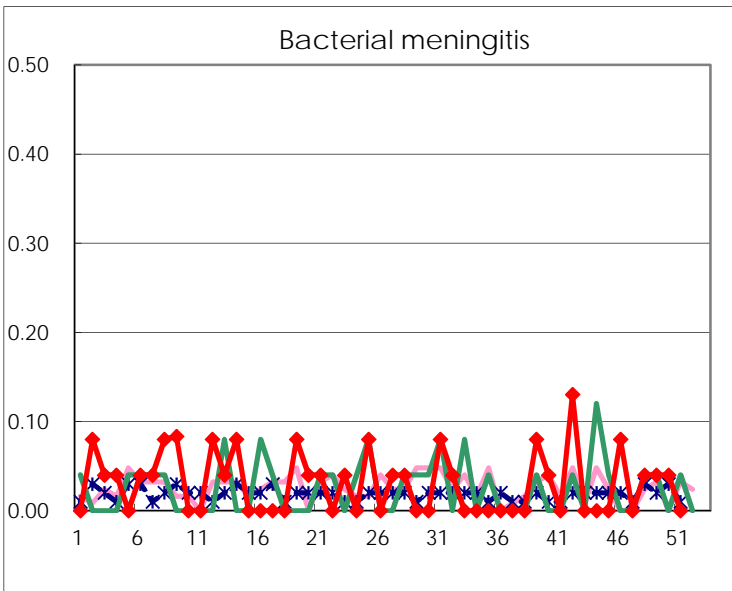
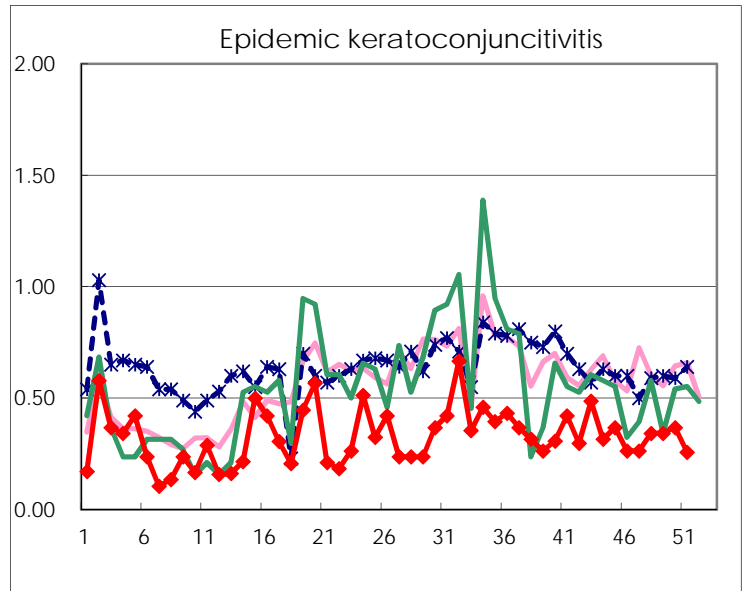
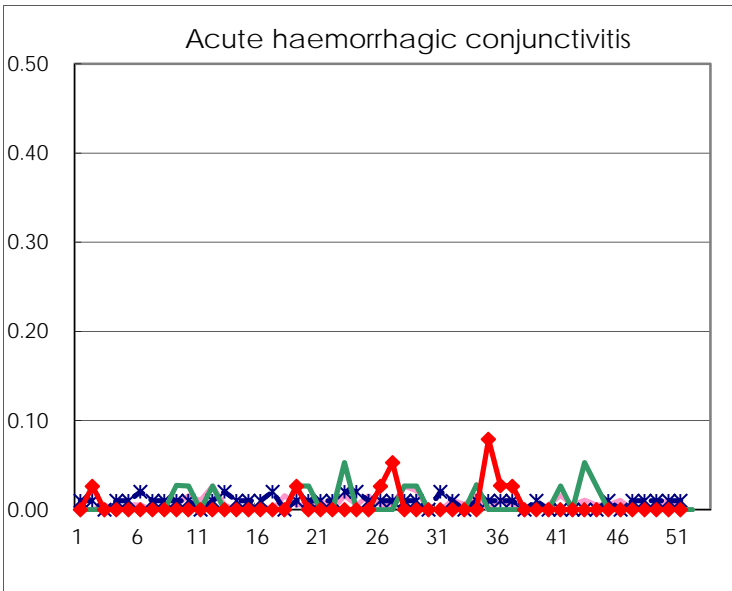
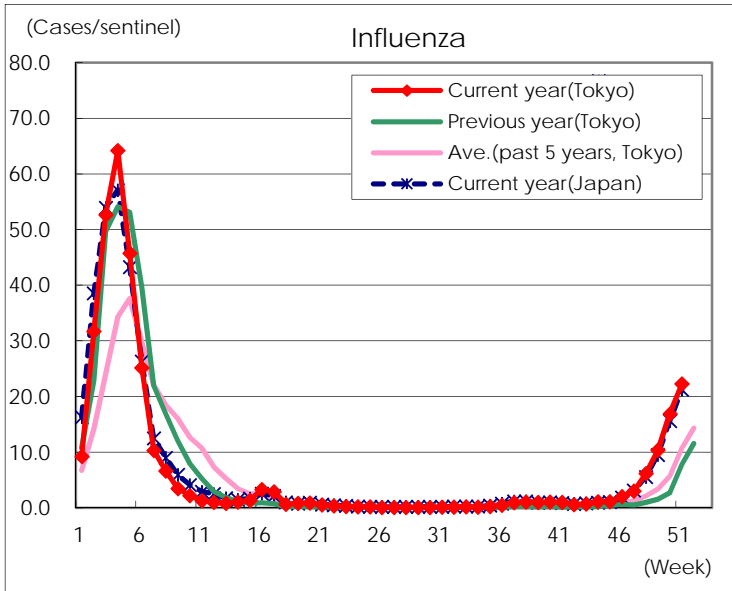
Diseases	Tokyo				
	48th	49th	50th	51st	/sentinel
Respiratory syncytial virus infection	59	58	44	65	0.25
Pharyngoconjunctival fever	121	141	159	145	0.56
Group A streptococcal pharyngitis	871	948	1,010	987	3.81
Infectious gastroenteritis	1,711	1,922	2,186	2,635	10.17
Chickenpox	208	164	246	190	0.73
Hand, foot, and mouth disease	434	374	305	246	0.95
Erythema infectiosum	31	32	25	28	0.11
Exanthem subitum	112	98	113	107	0.41
Herpangina	32	43	26	29	0.11
Mumps	18	15	11	16	0.06
Kawasaki disease	3	6	8	5	0.02
Cold with exanthems	16	27	11	9	0.03
Influenza	2,547	4,288	7,003	9,119	22.30
Acute hemorrhagic conjunctivitis					
Epidemic keratoconjunctivitis	13	13	14	9	0.26
Bacterial meningitis	1	1	1		
Aseptic meningitis	3	2	1	2	0.08
<i>Mycoplasma pneumoniae</i>	13	17	15	16	0.64
Chlamydial pneumonia (excluding psittacosis)	1	1		1	0.04
Infectious gastroenteritis (only by Rotavirus)	2				
Influenza-Associated Hospitalizations	20	21	70	84	3.36

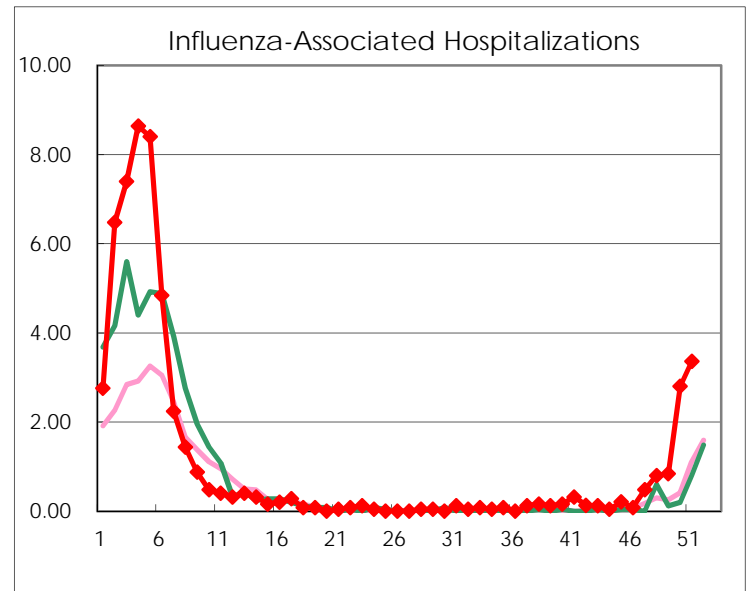
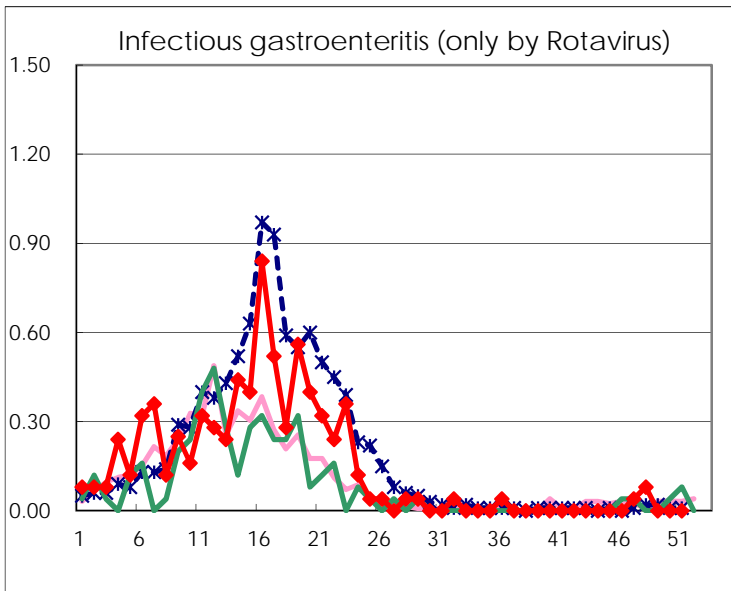
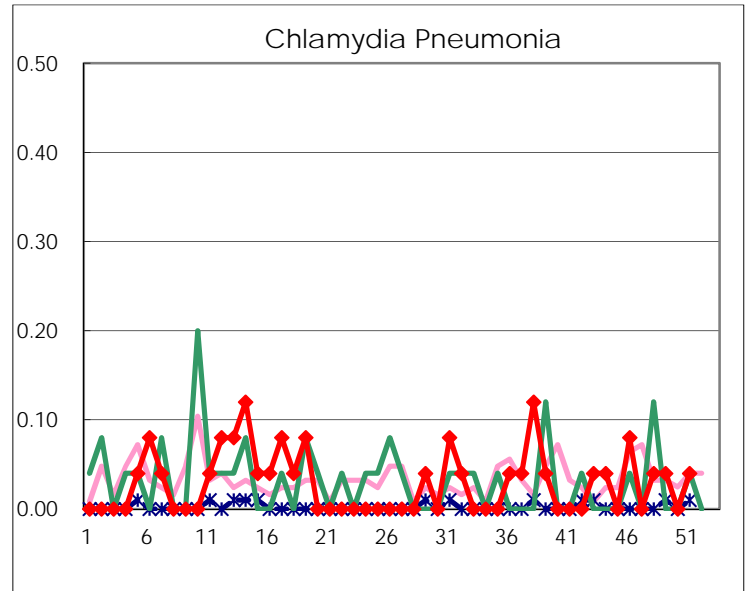
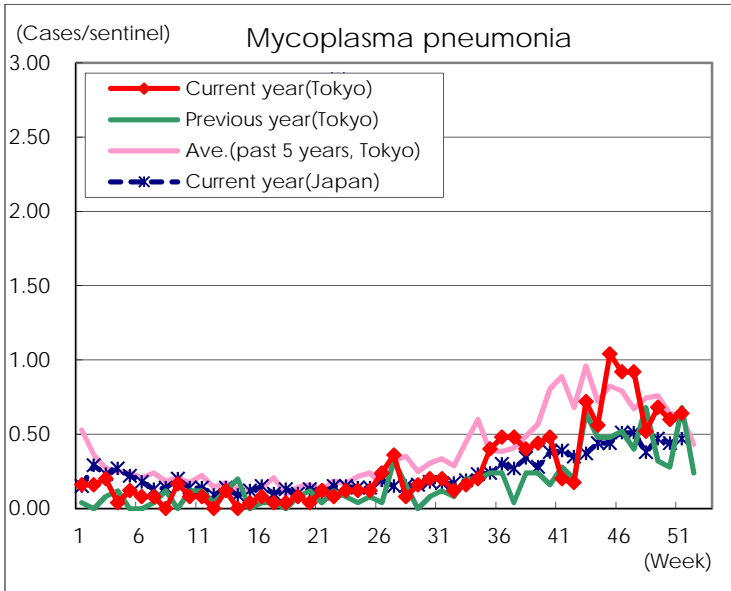
(Blank means 0.)

Disease Trend Graph (weekly reported cases per sentinel in comparison)









Number of sentinel facilities for weekly reporting		
Types of sentinels	Number of sentinels	Sentinels having reported
Pediatric	264	259
Influenza	419	409
Ophthalmic	39	35
Specially-designated	25	25