

9 January 2020 / Number 52

Surveillance System in Tokyo, Japan

The infectious diseases which all physicians must report

All physicians must report to health centers the incidence of the diseases which are shown at page one. Health centers electronically report the individual cases to Tokyo Metropolitan Infectious Disease Surveillance Center.

The infectious diseases required to be reported by the sentinels

The numbers of patients who visit the sentinel clinics or hospitals during a week are reported to health centers in Tokyo. And they electronically report the numbers to Tokyo Metropolitan Infectious Disease Surveillance Center. We have about 500 sentinel clinics and hospitals in Tokyo.

Tokyo Metropolitan Institute of Public Health

TEL:81-3-3363-3213 FAX:81-3-5332-7365

e-mail:www@tokyo-eiken.go.jp

URL:idsc.tokyo-eiken.go.jp/

Number of patients with the diseases which all physicians must report

Category	Diseases	Tokyo					Japan	
		49th	50th	51st	52nd	Cum 2019	52nd	Cum 2019
I	Ebola hemorrhagic fever							
	Crimean-Congo hemorrhagic fever							
	Smallpox							
	South American hemorrhagic fever							
	Plague							
	Marburg disease							
	Lassa fever							
II	Acute poliomyelitis							
	Tuberculosis	61	56	36	65	3,144	456	21,157
	Diphtheria							
	Severe Acute Respiratory Syndrome(SARS)							
	Middle East Respiratory Syndrome (MERS)							
	Avian influenza H5N1							
	Avian influenza H7N9							
III	Cholera					2		5
	Shigellosis	1		1		27	4	140
	Enterohemorrhagic Escherichia coli infection	3	6		5	388	30	3,739
	Typhoid fever					3	2	37
	Paratyphoid fever					4		21
IV	Hepatitis E	2	3	3	1	128	11	490
	West Nile fever							
	Hepatitis A	2		1	2	143	4	425
	Echinococcosis						1	24
	Yellow fever							
	Psittacosis					3		13
	Omsk hemorrhagic fever							
	Relapsing fever							7
	Kyasanur forest disease							
	Q fever							2
	Rabies							
	Coccidioidomycosis							2
	Monkeypox							
	Zika virus infection							3
	Severe Fever with Thrombocytopenia Syndrome					1		101
	Hemorrhagic fever with renal syndrome							
	Western equine encephalitis							
	Tick-borne encephalitis							
	Anthrax							
	Chikungunya fever			2		11		49
	Scrub typhus(Tsutsugamushi disease)	1	2	4	1	12	28	398
	Dengue fever	1		2		130	4	461
	Eastern equine encephalitis							
	Avian influenza (excluding H5N1 and H7N9)							
	Nipah virus infection							
	Japanese spotted fever						2	318
	Japanese encephalitis							8
	Hantavirus pulmonary syndrome							
	Herpes B virus infection						1	2
	Glanders							
	Brucellosis					1		2
	Venezuelan equine encephalitis							
	Hendra virus infection							
Epidemic typhus								
Botulism							3	
Malaria	1			1	22		57	
Tularemia								
Lyme disease					1		17	
Lyssavirus infection(excluding rabies)								
Rift valley fever								
Melioidosis							2	
Legionellosis	4	1	2	4	187	18	2,314	
Leptospirosis					9	1	32	
Rocky mountain spotted fever								

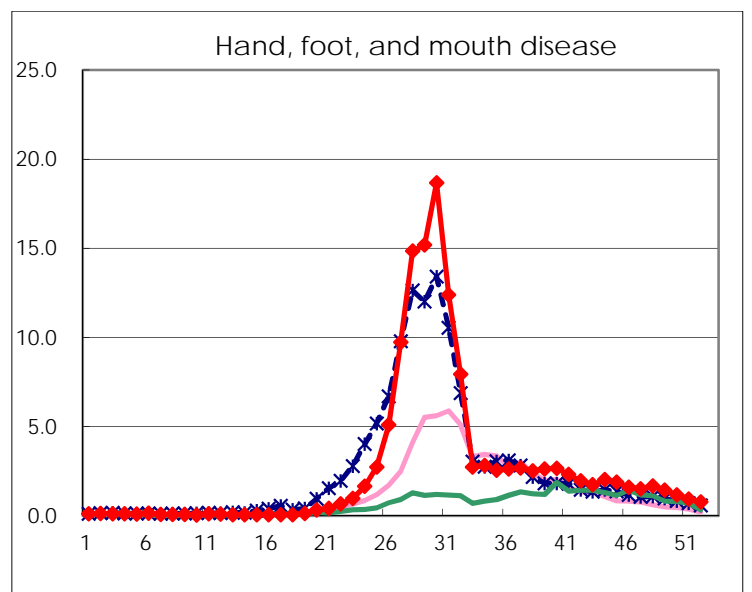
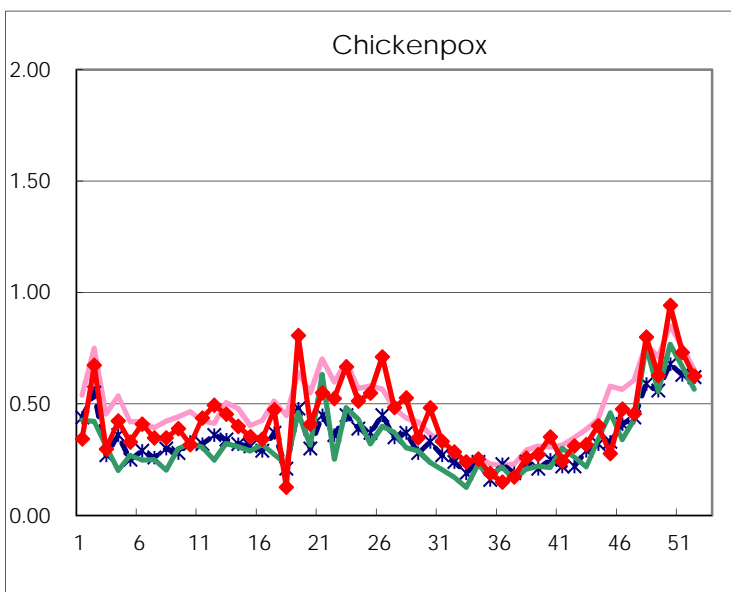
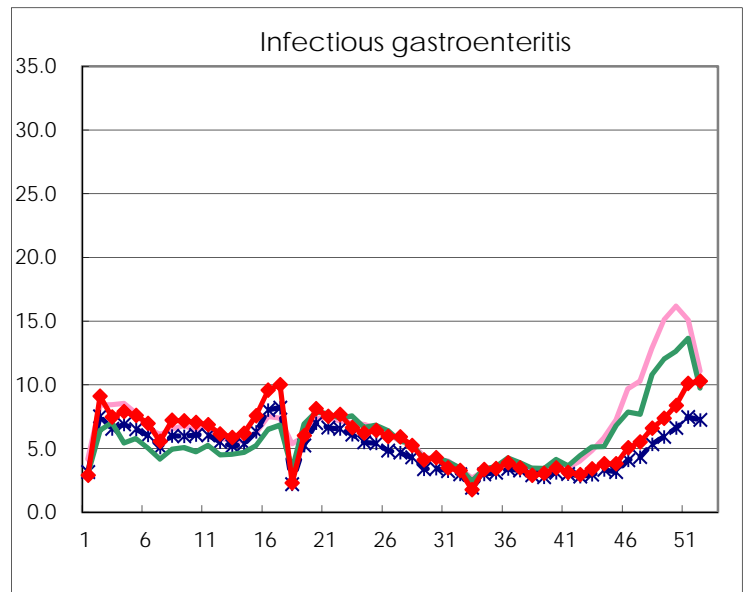
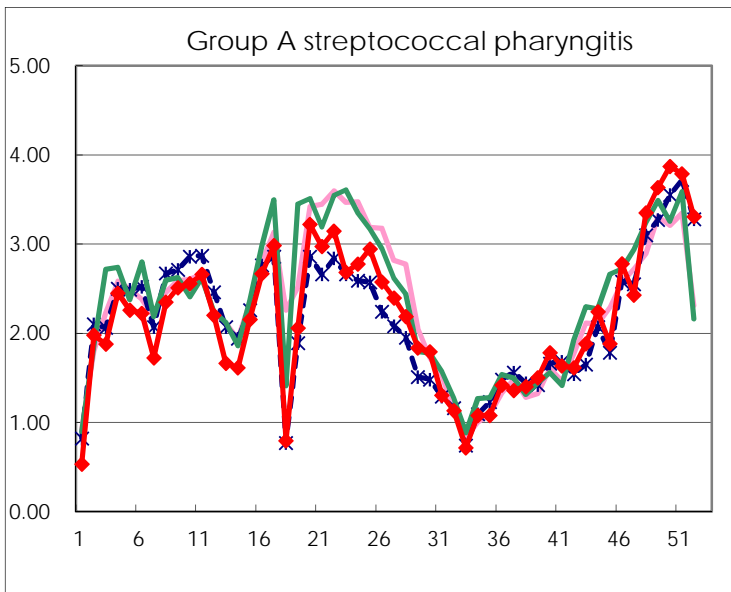
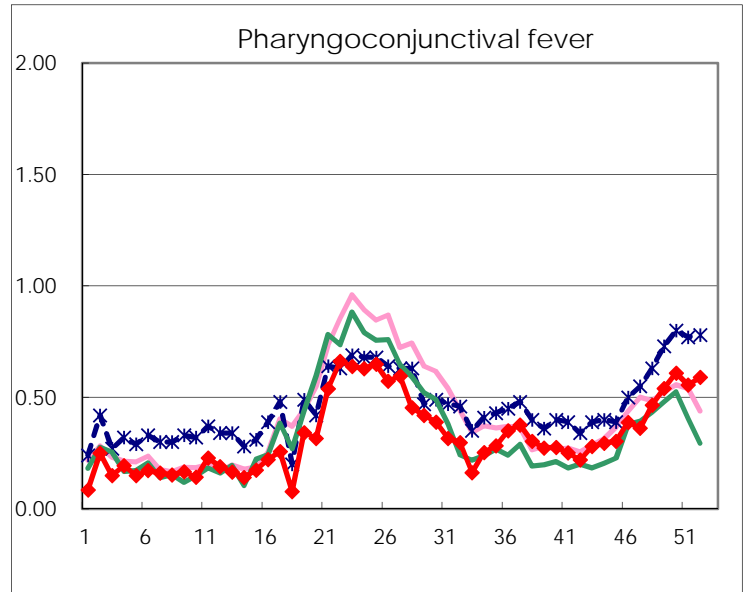
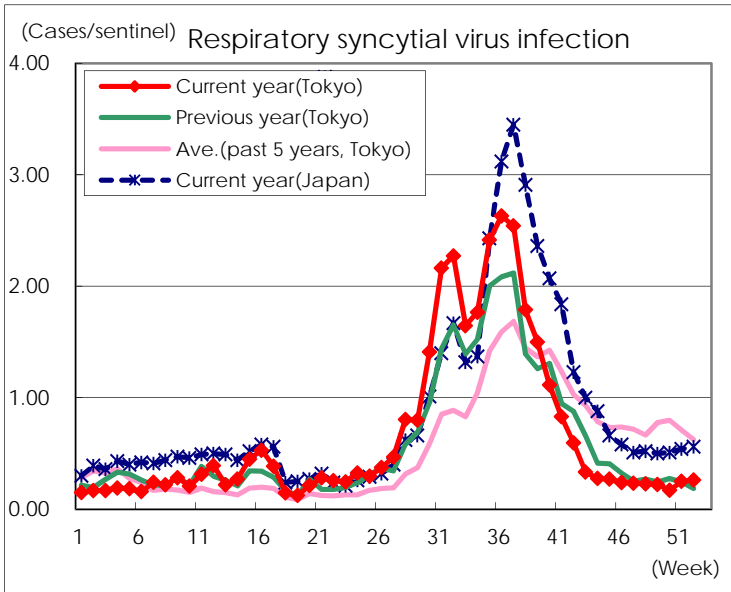
Category	Diseases	Tokyo					Japan	
		49th	50th	51st	52nd	Cum 2019	52nd	Cum 2019
V	Amebiasis	2	2	3	1	155	13	844
	Viral hepatitis(excluding hepatitis A and E)	3	1	2	1	98	2	327
	CRE infection	4	3	7	6	236	37	2,311
	Acute Flaccid Paralysis (excluding Acute poliomyelitis)		2			7		78
	Acute encephalitis(excluding JE and WNE)	3	3		1	81	45	952
	Cryptosporidiosis					4		19
	Creutzfeldt-Jakob disease				2	19	6	191
	Severe invasive streptococcal infections(TSLs)	3	3	2	5	126	13	923
	Acquired immunodeficiency syndrome (AIDS)	9	8	10	16	406	20	1,225
	Giardiasis	1	1		1	12	1	53
	Invasive <i>Haemophilus influenzae</i> disease		1	3	3	85	12	539
	Invasive meningococcal disease			1		5		48
	Invasive pneumococcal disease	8	7	10	16	382	89	3,321
	Varicella (limited to hospitalized case)	1	6	1	3	80	10	489
	Congenital rubella syndrome					2		4
	Syphilis	38	29	20	33	1,711	75	6,577
	Disseminated cryptococcosis					12	4	155
	Tetanus					8	2	125
	Vancomycin-resistant <i>S. aureus</i> infection							
	Vancomycin-resistant <i>Enterococcus</i> infection					8	2	80
	Pertussis	18	13	17	10	1,340	179	16,785
	Rubella	2	2			860	12	2,306
Measles	2	1			124		744	
MDRA infection					2		24	

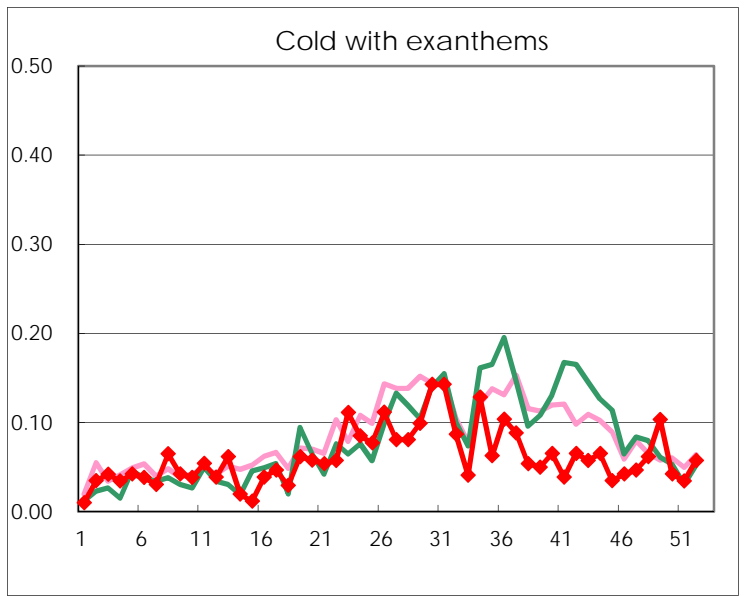
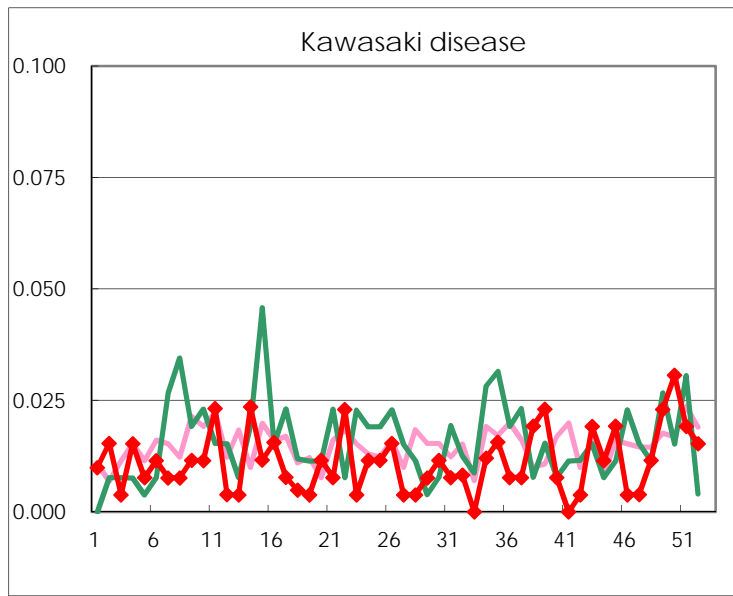
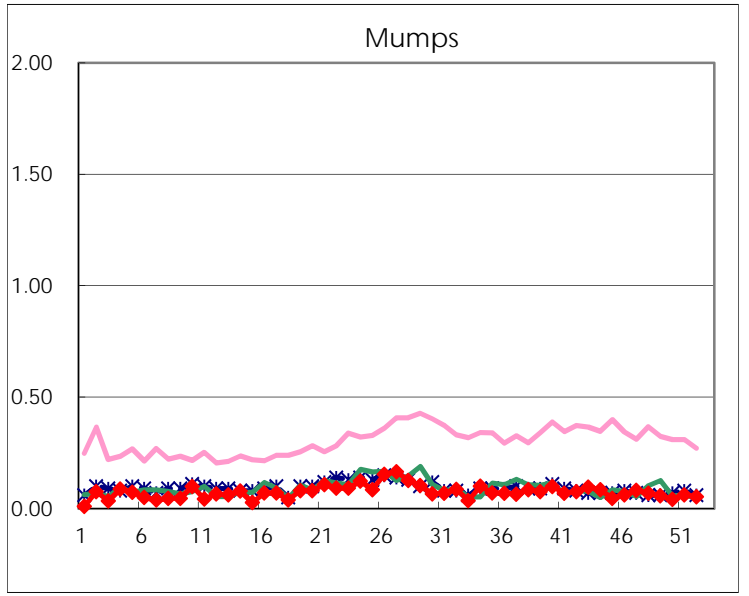
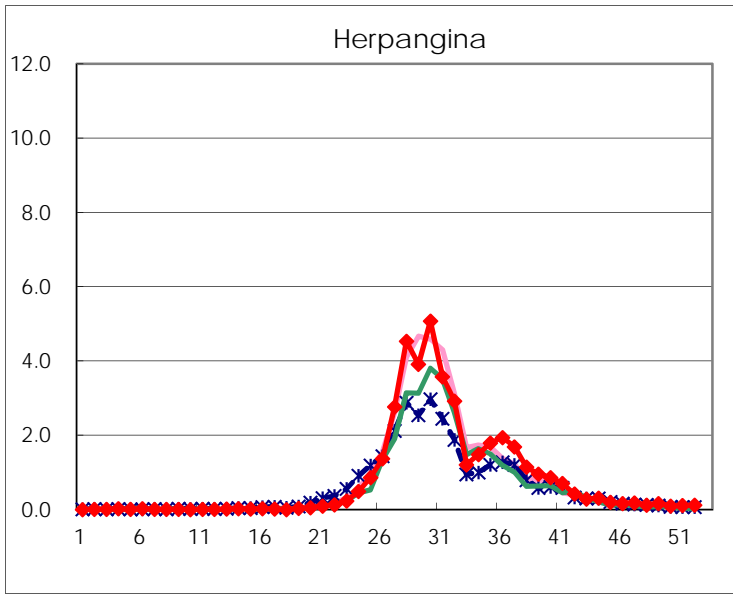
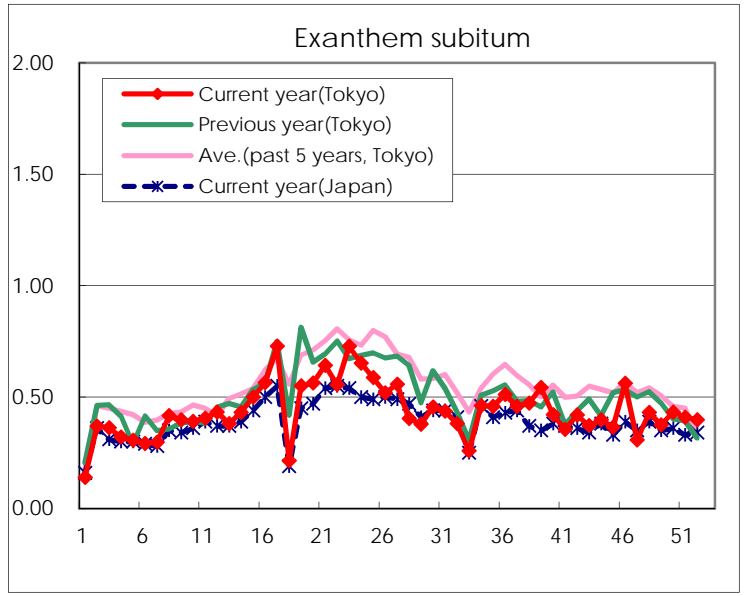
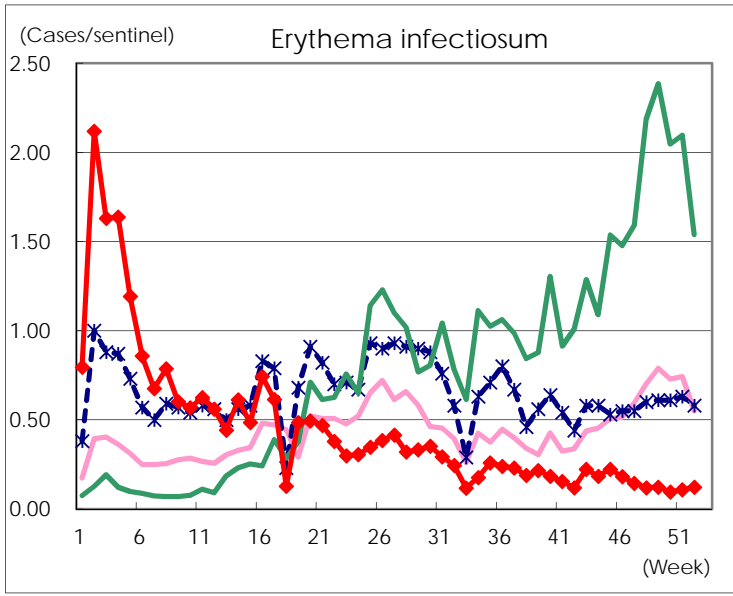
Number of patients with the diseases to be reported
by the designated clinics and hospitals

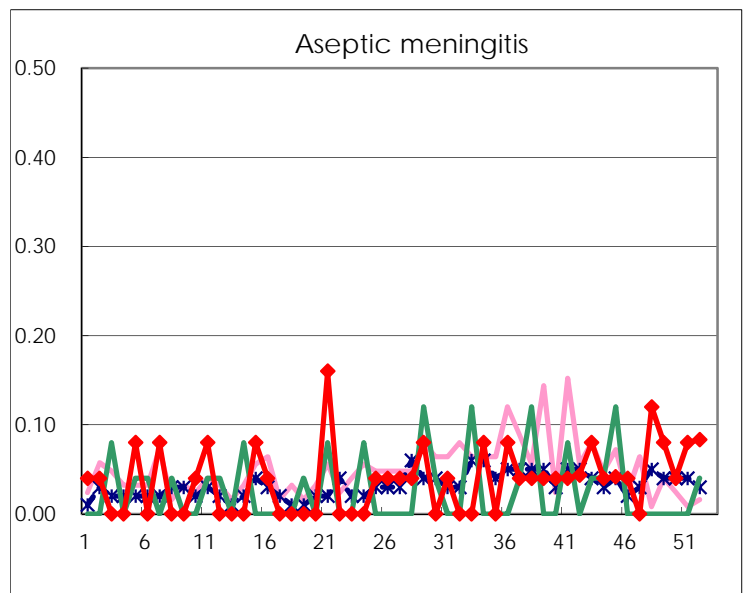
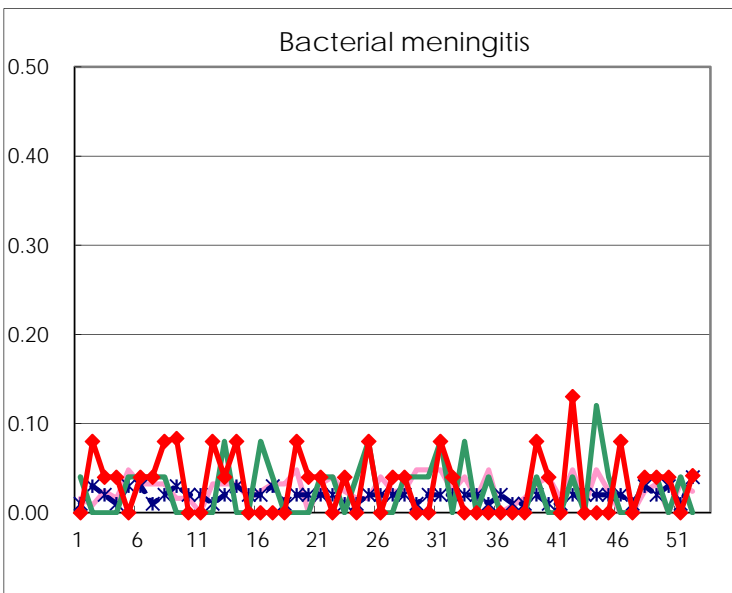
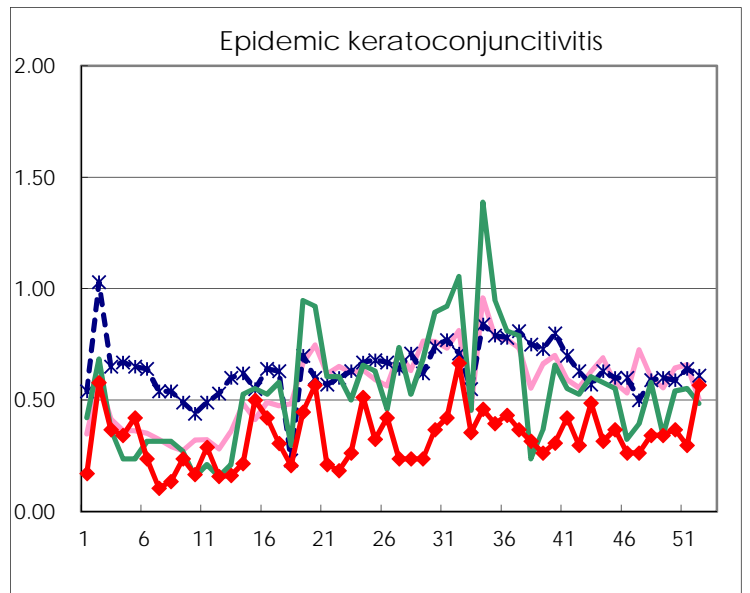
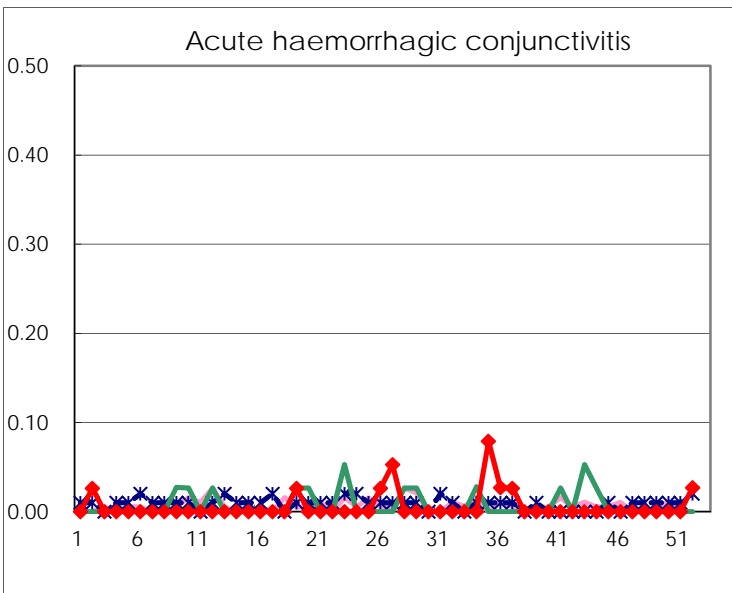
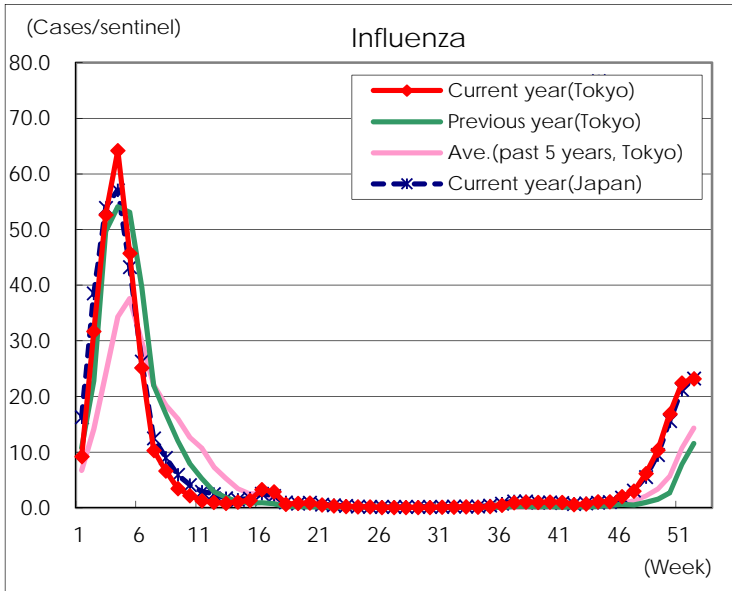
Diseases	Tokyo				
	49th	50th	51st	52nd	/sentinel
Respiratory syncytial virus infection	58	44	65	68	0.26
Pharyngoconjunctival fever	141	159	145	154	0.59
Group A streptococcal pharyngitis	948	1,010	989	863	3.31
Infectious gastroenteritis	1,922	2,186	2,639	2,683	10.28
Chickenpox	164	246	191	163	0.62
Hand, foot, and mouth disease	374	305	246	203	0.78
Erythema infectiosum	32	25	28	32	0.12
Exanthem subitum	98	113	107	104	0.40
Herpangina	43	26	29	31	0.12
Mumps	15	11	16	14	0.05
Kawasaki disease	6	8	5	4	0.02
Cold with exanthems	27	11	9	15	0.06
Influenza	4,293	7,019	9,340	9,595	23.18
Acute hemorrhagic conjunctivitis				1	0.03
Epidemic keratoconjunctivitis	13	14	11	21	0.57
Bacterial meningitis	1	1		1	0.04
Aseptic meningitis	2	1	2	2	0.08
<i>Mycoplasma pneumoniae</i>	17	15	16	13	0.54
Chlamydial pneumonia (excluding psittacosis)	1		1	2	0.08
Infectious gastroenteritis (only by Rotavirus)					
Influenza-Associated Hospitalizations	21	70	84	100	4.17

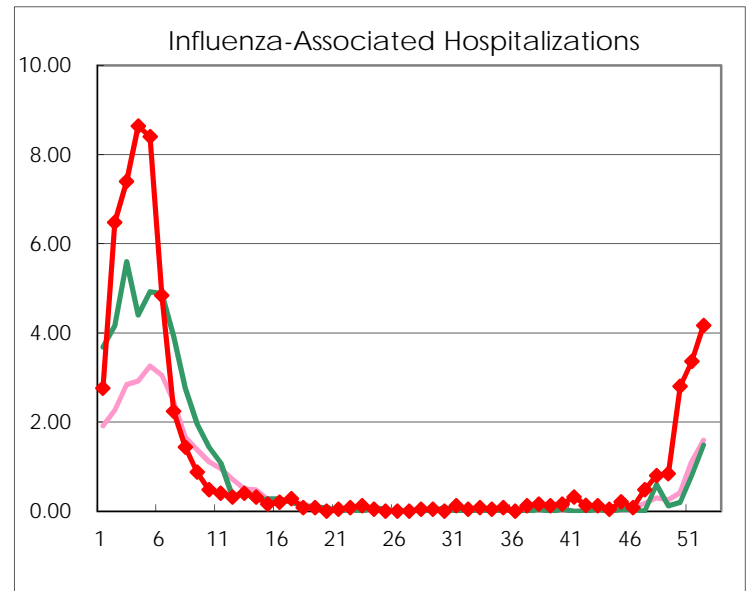
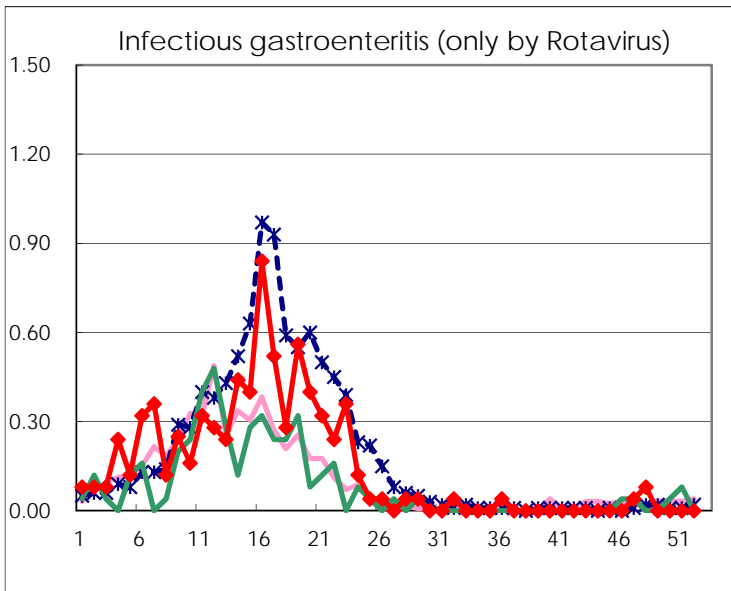
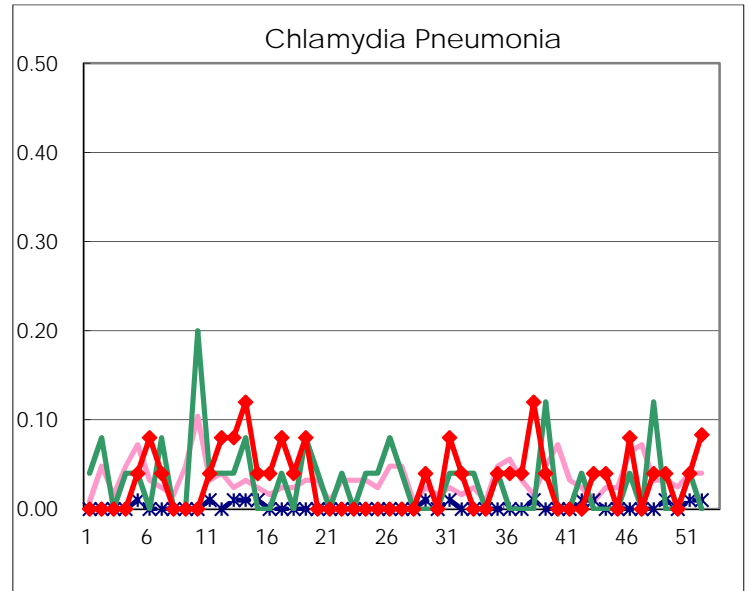
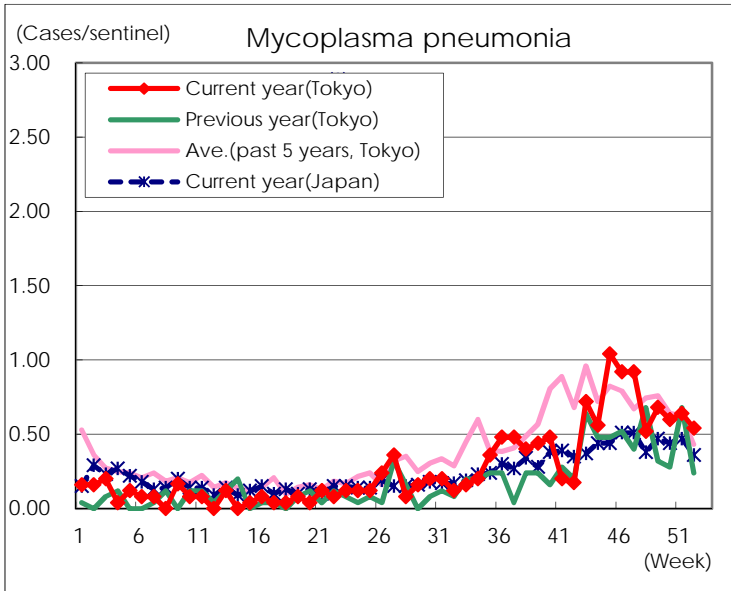
(Blank means 0.)

Disease Trend Graph (weekly reported cases per sentinel in comparison)









Number of sentinel facilities for weekly reporting		
Types of sentinels	Number of sentinels	Sentinels having reported
Pediatric	264	261
Influenza	419	414
Ophthalmic	39	37
Specially-designated	25	24