

## 17 December 2020 / Number 50 ( 12/7 ~ 12/13 )

### Surveillance System in Tokyo, Japan

The infectious diseases which all physicians must report

All physicians must report to health centers the incidence of the diseases which are shown at page one. Health centers electronically report the individual cases to Tokyo Metropolitan Infectious Disease Surveillance Center.

The infectious diseases required to be reported by the sentinels

The numbers of patients who visit the sentinel clinics or hospitals during a week are reported to health centers in Tokyo. And they electronically report the numbers to Tokyo Metropolitan Infectious Disease Surveillance Center. We have about 500 sentinel clinics and hospitals in Tokyo.

Tokyo Metropolitan Institute of Public Health

TEL:81-3-3363-3213 FAX:81-3-5332-7365

e-mail:[www@tokyo-eiken.go.jp](mailto:www@tokyo-eiken.go.jp)

URL:[idsc.tokyo-eiken.go.jp/](http://idsc.tokyo-eiken.go.jp/)

---

Number of patients with the diseases which all physicians must report

Category	Diseases	Tokyo					Japan		
		47th	48th	49th	50th	Cum 2020	50th	Cum 2020	
I	Ebola hemorrhagic fever								
	Crimean-Congo hemorrhagic fever								
	Smallpox								
	South American hemorrhagic fever								
	Plague								
	Marburg disease								
	Lassa fever								
II	Acute poliomyelitis								
	Tuberculosis	36	32	44	42	2,331	250	16,224	
	Diphtheria								
	Severe Acute Respiratory Syndrome(SARS)								
	Middle East Respiratory Syndrome (MERS)								
	Avian influenza H5N1								
	Avian influenza H7N9								
※	Novel Coronavirus 2019 infection								
III	Cholera							1	
	Shigellosis					11		86	
	Enterohemorrhagic Escherichia coli infection	5	5	4	5	323	30	2,994	
	Typhoid fever					2		21	
	Paratyphoid fever					1		7	
IV	Hepatitis E	4	3	3	5	113	7	424	
	West Nile fever								
	Hepatitis A					23		117	
	Echinococcosis						1	21	
	Yellow fever								
	Psittacosis							5	
	Omsk hemorrhagic fever								
	Relapsing fever							15	
	Kyasanur forest disease								
	Q fever								
	Rabies							1	
	Coccidioidomycosis		2			3		6	
	Monkeypox								
	Zika virus infection							1	
	Severe Fever with Thrombocytopenia Syndrome							2	77
	Hemorrhagic fever with renal syndrome								
	Western equine encephalitis								
	Tick-borne encephalitis								
	Anthrax								
	Chikungunya fever								3
	Scrub typhus(Tsutsugamushi disease)	1	2	1	5	17	57	387	
	Dengue fever					13		44	
	Eastern equine encephalitis								
	Avian influenza (excluding H5N1 and H7N9)								
	Nipah virus infection								
	Japanese spotted fever							1	419
	Japanese encephalitis								5
	Hantavirus pulmonary syndrome								
	Herpes B virus infection								
	Glanders								
	Brucellosis								2
	Venezuelan equine encephalitis								
	Hendra virus infection								
Epidemic typhus									
Botulism						1		4	
Malaria						6		20	
Tularemia									
Lyme disease						1		26	
Lyssavirus infection(excluding rabies)									
Rift valley fever									
Melioidosis	1				1			1	
Legionellosis	4	1	2	2	138	21	1,970		
Leptospirosis					2			16	
	Rocky mountain spotted fever								

Category	Diseases	Tokyo					Japan	
		47th	48th	49th	50th	Cum 2020	50th	Cum 2020
V	Amebiasis	1	4		3	110	3	582
	Viral hepatitis(excluding hepatitis A and E)	1	1			59		231
	CRE infection	6	5	5	4	163	26	1,795
	Acute Flaccid Paralysis (excluding Acute poliomyelitis)		1			3		30
	Acute encephalitis(excluding JE and WNE)					31	3	467
	Cryptosporidiosis							6
	Creutzfeldt-Jakob disease		1		1	17	3	141
	Severe invasive streptococcal infections(TSLS)	4	1		6	98	10	715
	Acquired immunodeficiency syndrome (AIDS)	6	3	11	5	369	12	1,029
	Giardiasis					8		23
	Invasive <i>Haemophilus influenzae</i> disease	1				23	3	241
	Invasive meningococcal disease					2		14
	Invasive pneumococcal disease	5	2	2	2	152	20	1,562
	Varicella (limited to hospitalized case)		1	1	1	49	4	347
	Congenital rubella syndrome							1
	Syphilis	30	29	34	24	1,459	64	5,484
	Disseminated cryptococcosis	2				17		145
	Tetanus					8		104
	Vancomycin-resistant <i>S. aureus</i> infection							
	Vancomycin-resistant Enterococcus infection					6		129
Pertussis	1			1	259	12	2,893	
Rubella	1				28		99	
Measles					3		13	
MDRA infection							10	

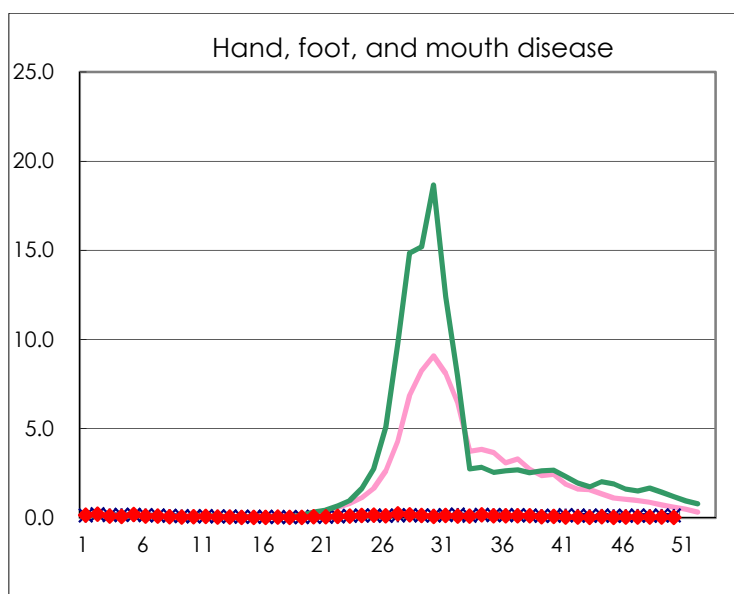
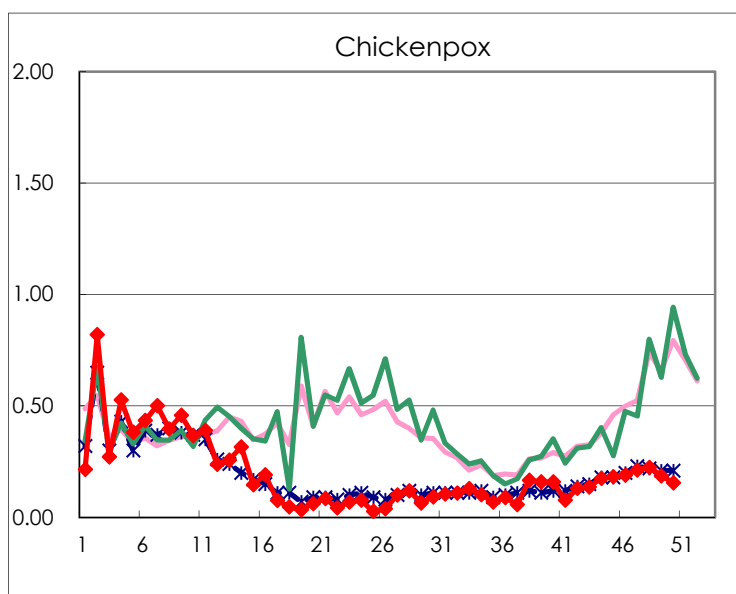
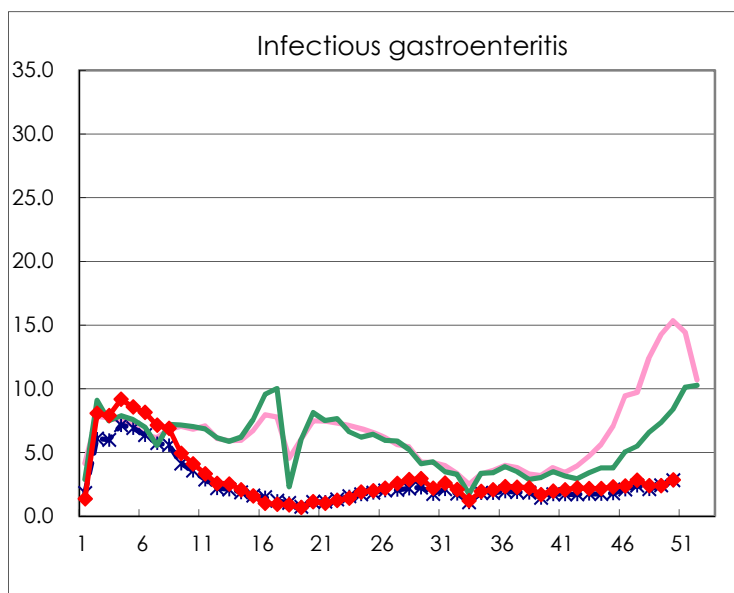
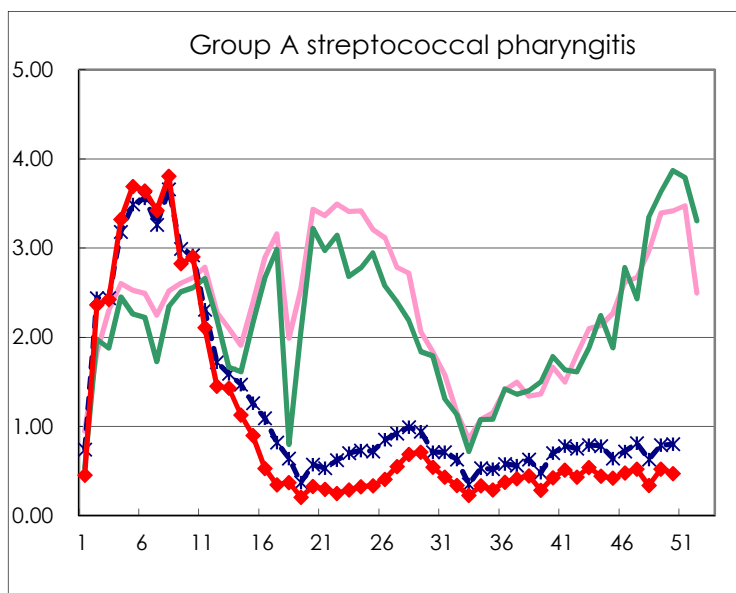
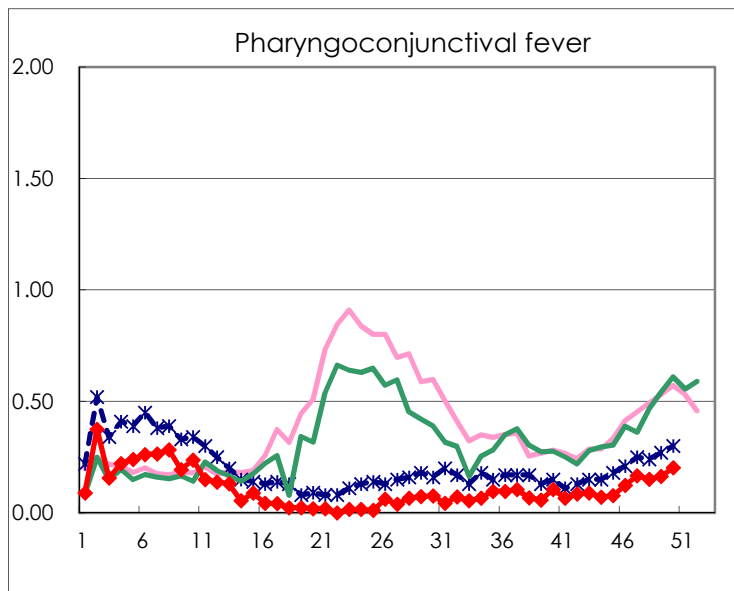
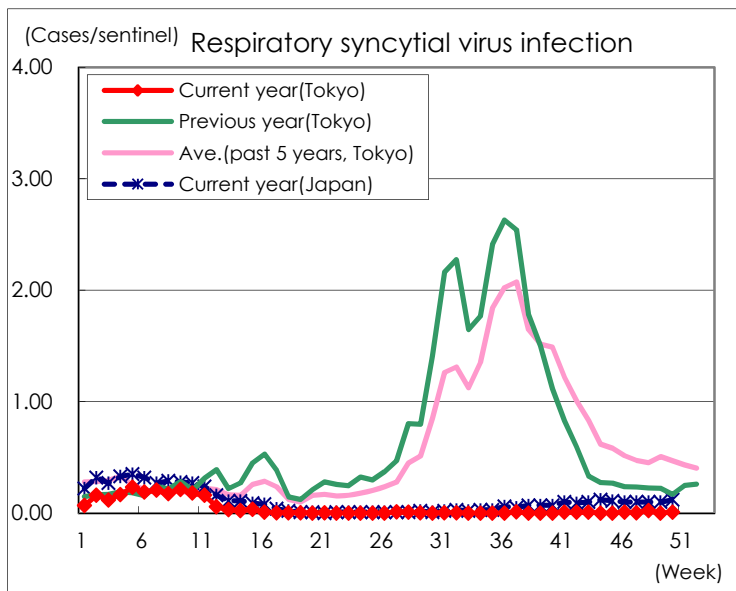
※ Designated infectious disease

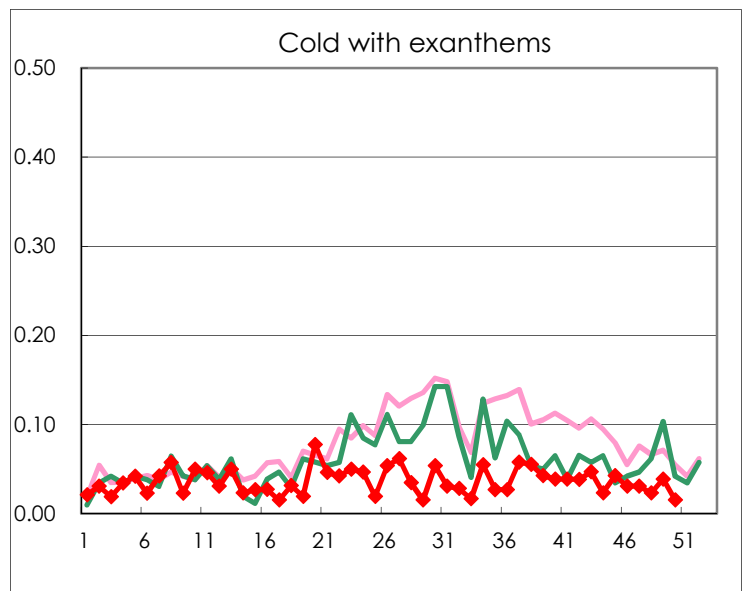
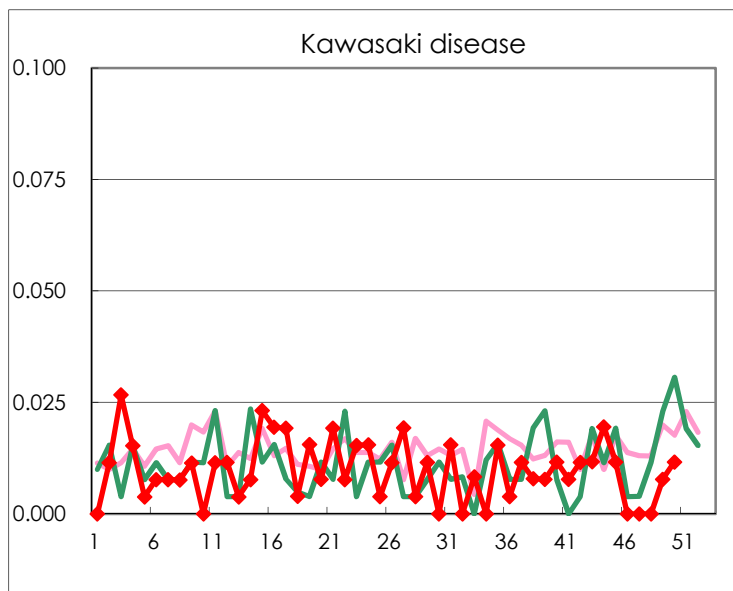
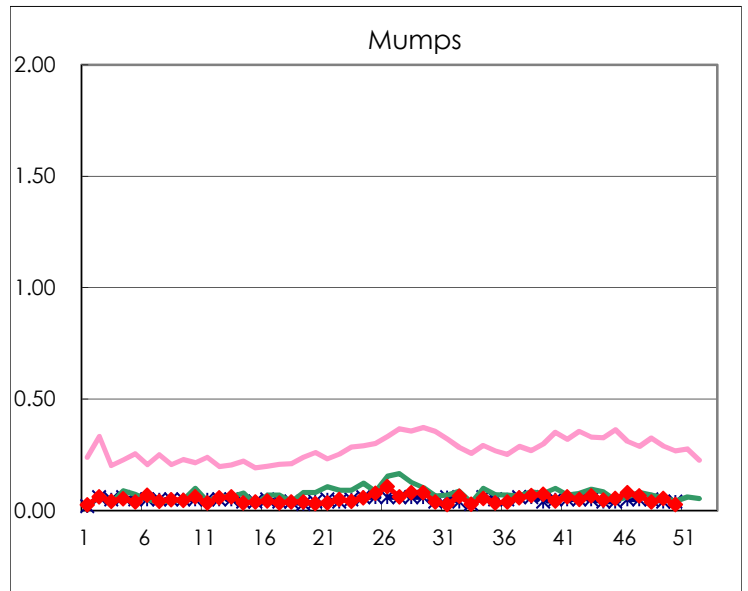
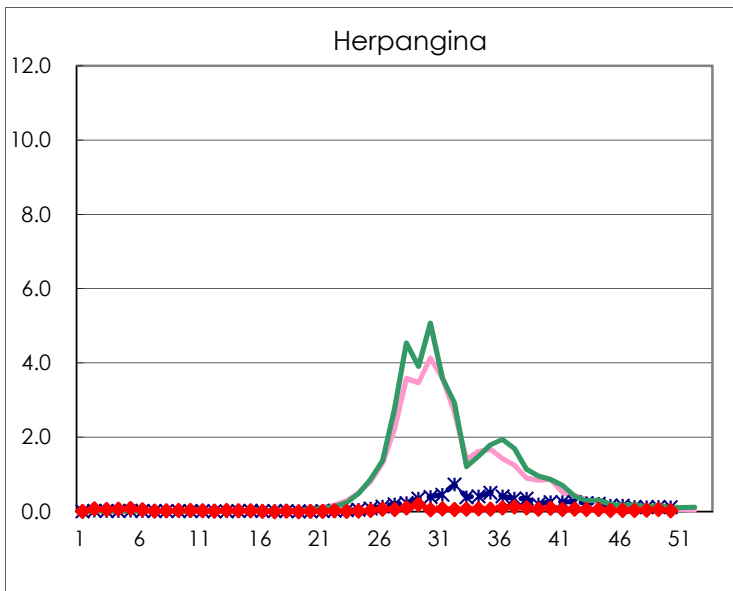
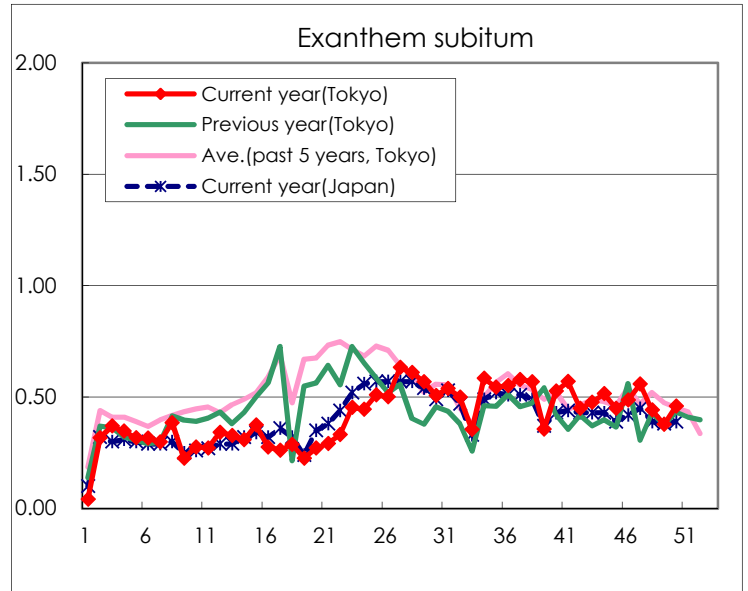
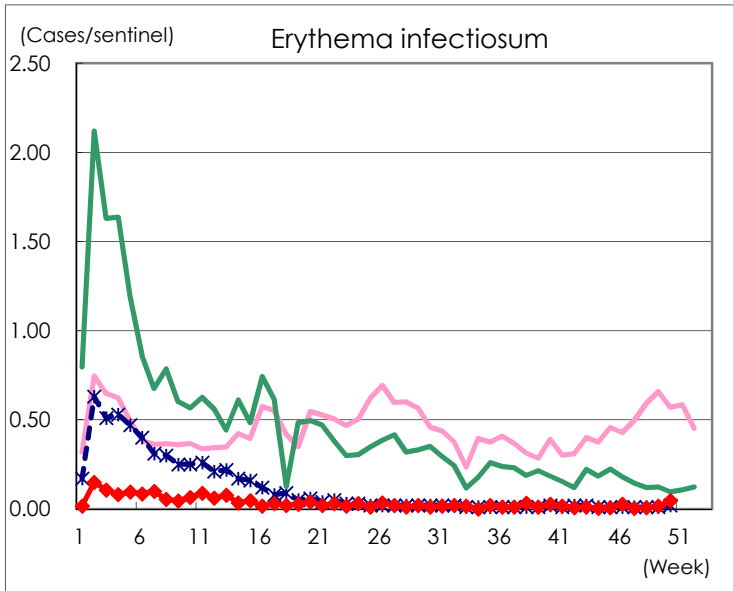
Number of patients with the diseases to be reported  
by the designated clinics and hospitals

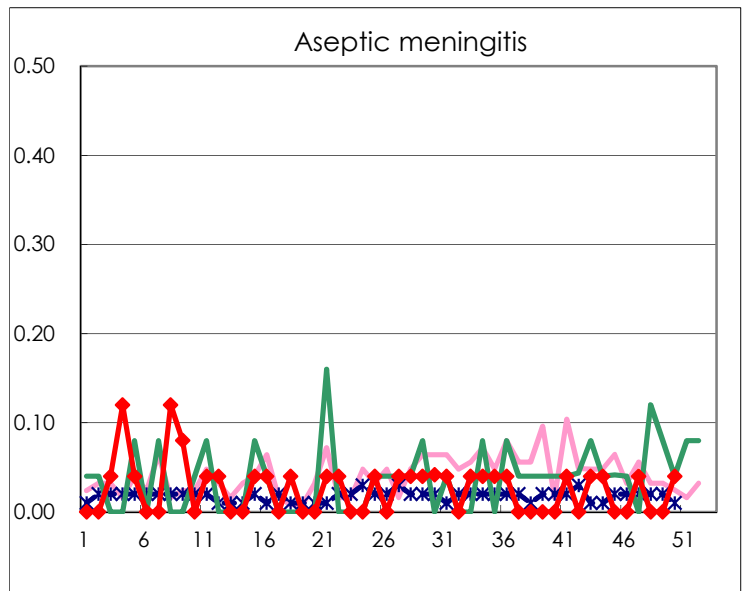
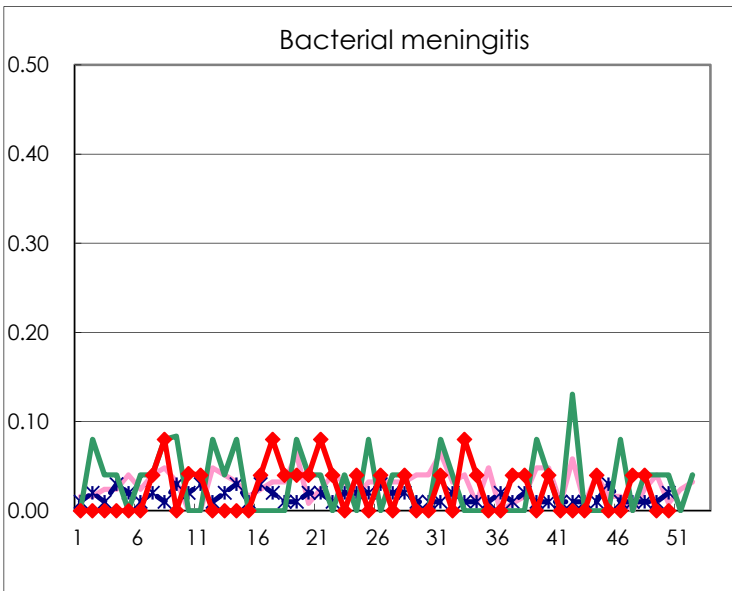
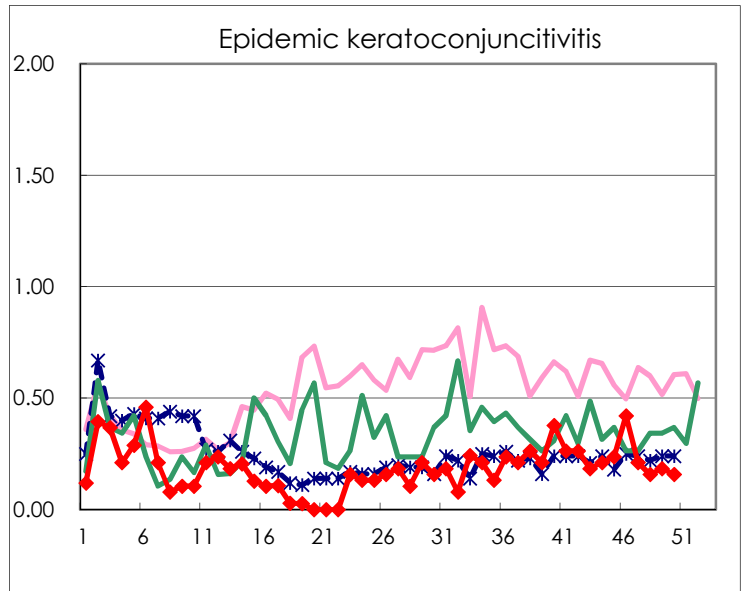
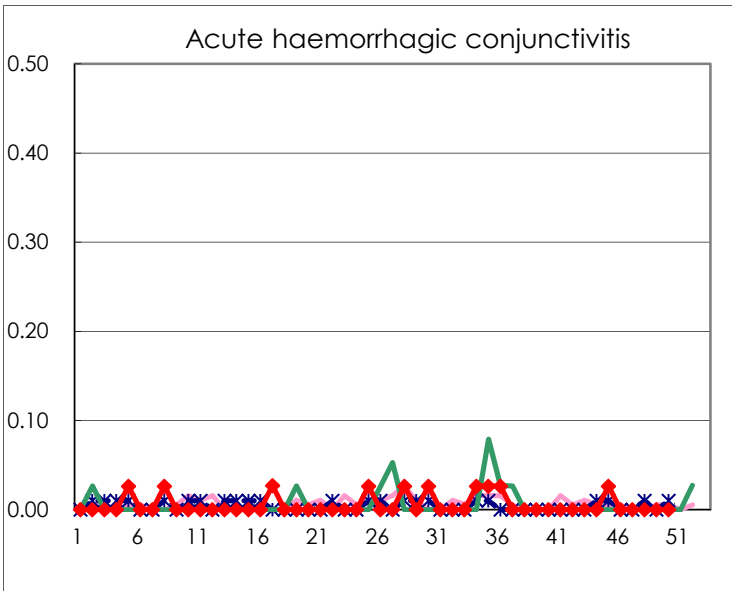
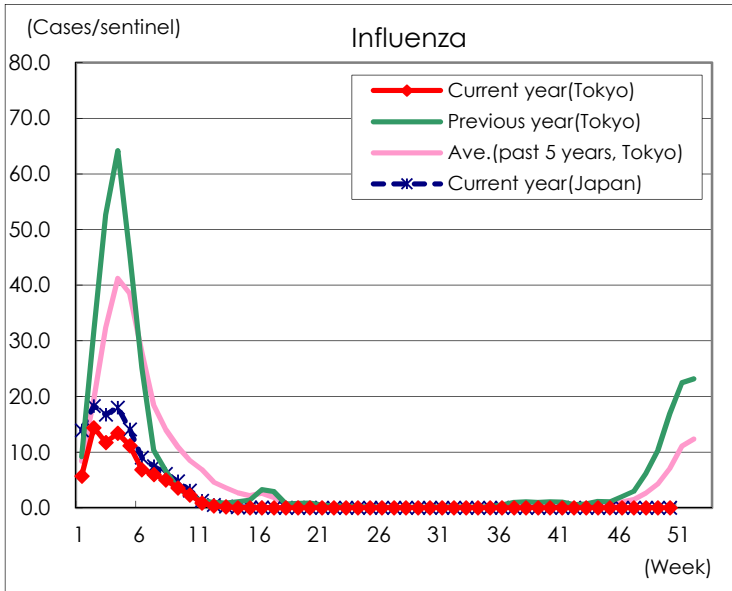
Diseases	Tokyo				
	47th	48th	49th	50th	/sentinel
Respiratory syncytial virus infection	1	6		2	0.01
Pharyngoconjunctival fever	43	39	42	52	0.20
Group A streptococcal pharyngitis	134	87	134	121	0.47
Infectious gastroenteritis	729	615	617	729	2.84
Chickenpox	55	58	48	40	0.16
Hand, foot, and mouth disease	11	8	8	6	0.02
Erythema infectiosum	1	2	4	12	0.05
Exanthem subitum	144	114	97	118	0.46
Herpangina	8	12	15	6	0.02
Mumps	17	10	14	7	0.03
Kawasaki disease			2	3	0.01
Cold with exanthsms	8	6	10	4	0.02
Influenza	5	4	3	4	0.01
Acute hemorrhagic conjunctivitis					
Epidemic keratoconjunctivitis	8	6	7	6	0.16
Bacterial meningitis	1	1			
Aseptic meningitis	1			1	0.04
Mycoplasma pneumonia					
Chlamydial pneumonia (excluding psittacosis)					
Infectious gastroenteritis (only by Rotavirus)					
Influenza-Associated Hospitalizations					

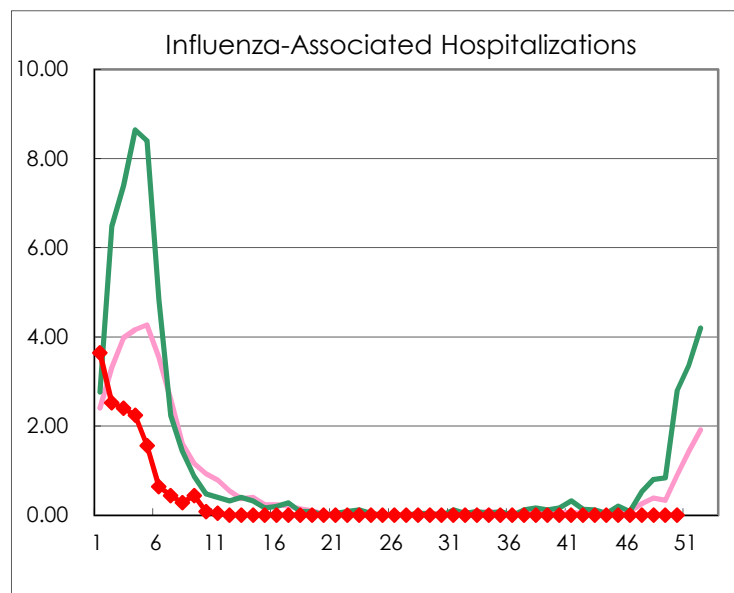
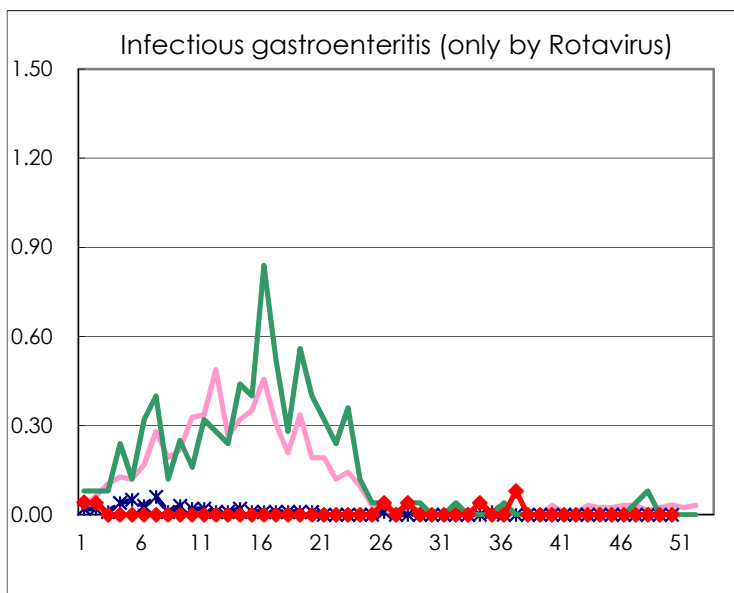
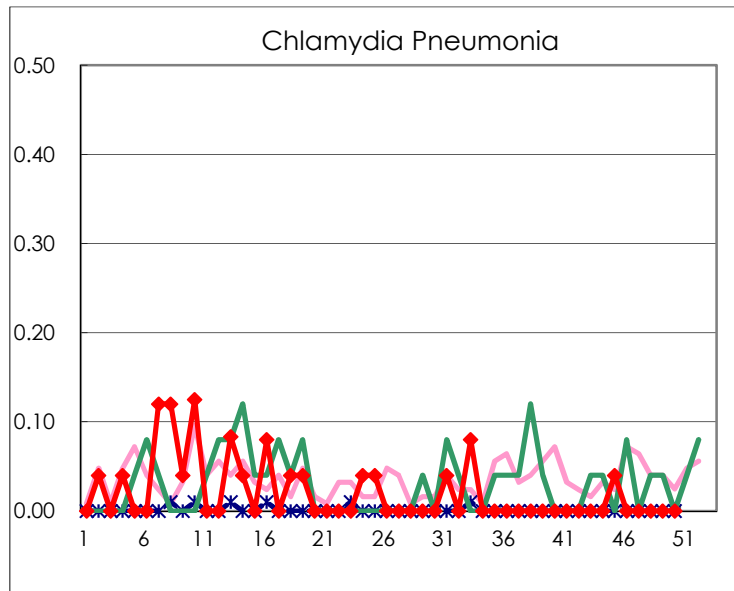
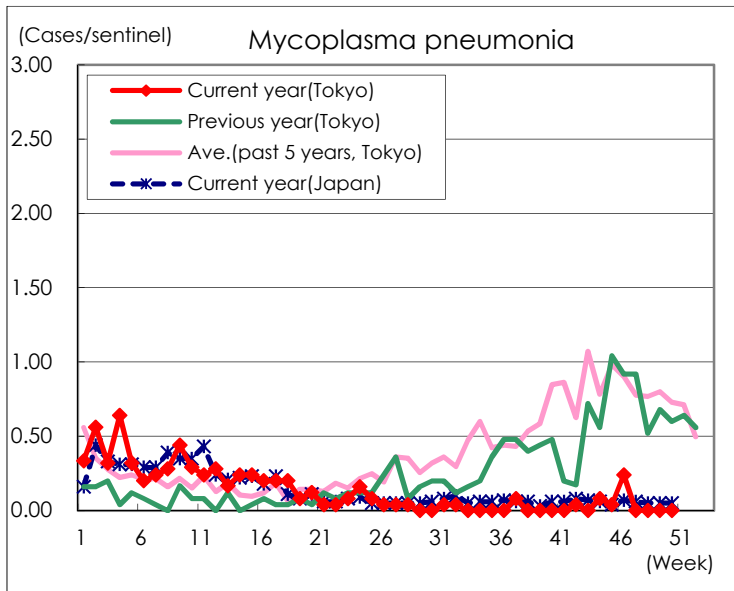
( Blank means 0. )

# Disease Trend Graph (weekly reported cases per sentinel in comparison)









Number of sentinel facilities for weekly reporting		
Types of sentinels	Number of sentinels	Sentinels having reported
Pediatric	264	257
Influenza	419	407
Ophthalmic	39	38
Specially-designated	25	25