

---

INFECTIOUS DISEASES WEEKLY REPORT

# TOKYO IDWR

Tokyo Metropolitan Infectious Disease Surveillance Center

**28 October 2021 / Number 42**  
**( 10/18 ~ 10/24 )**

## Surveillance System in Tokyo, Japan

The infectious diseases which all physicians must report  
All physicians must report to health centers the incidence of the diseases which are shown at page one. Health centers electronically report the individual cases to Tokyo Metropolitan Infectious Disease Surveillance Center.

The infectious diseases required to be reported by the sentinels  
The numbers of patients who visit the sentinel clinics or hospitals during a week are reported to health centers in Tokyo. And they electronically report the numbers to Tokyo Metropolitan Infectious Disease Surveillance Center. We have about 500 sentinel clinics and hospitals in Tokyo.

Tokyo Metropolitan Institute of Public Health

TEL:81-3-3363-3213 FAX:81-3-5332-7365

e-mail:[www@tokyo-eiken.go.jp](mailto:www@tokyo-eiken.go.jp)

URL:[idsc.tokyo-eiken.go.jp/](http://idsc.tokyo-eiken.go.jp/)

---

Number of patients with the diseases which all physicians must report

Category	Diseases	Tokyo					Japan	
		39th	40th	41st	42nd	Cum 2021	42nd	Cum 2021
I	Ebola hemorrhagic fever							
	Crimean-Congo hemorrhagic fever							
	Smallpox							
	South American hemorrhagic fever							
	Plague							
	Marburg disease							
	Lassa fever							
II	Acute poliomyelitis							
	Tuberculosis	42	64	47	33	1,785	221	12,638
	Diphtheria							
	Severe Acute Respiratory Syndrome(SARS)							
	Middle East Respiratory Syndrome (MERS)							
	Avian influenza H5N1							
	Avian influenza H7N9							
III	Cholera							
	Shigellosis					2		6
	Enterohemorrhagic Escherichia coli infection	9	2	6	7	282	72	2,651
	Typhoid fever							1
	Paratyphoid fever							
IV	Hepatitis E	4			1	90	5	355
	West Nile fever							
	Hepatitis A	1			1	12	3	62
	Echinococcosis					1		22
	Yellow fever							
	Psittacosis							8
	Omsk hemorrhagic fever							
	Relapsing fever							6
	Kyasanur forest disease							
	Q fever					1		1
	Rabies							
	Coccidioidomycosis							
	Monkeypox							
	Zika virus infection							
	Severe Fever with Thrombocytopenia Syndrome						2	102
	Hemorrhagic fever with renal syndrome							
	Western equine encephalitis							
	Tick-borne encephalitis							
	Anthrax							
	Chikungunya fever							
	Scrub typhus(Tsutsugamushi disease)					2	4	147
	Dengue fever							5
	Eastern equine encephalitis							
	Avian influenza (excluding H5N1 and H7N9)							
	Nipah virus infection							
	Japanese spotted fever					3	19	405
	Japanese encephalitis							2
	Hantavirus pulmonary syndrome							
	Herpes B virus infection							
	Glanders							
	Brucellosis							1
	Venezuelan equine encephalitis							
	Hendra virus infection							
	Epidemic typhus							
Botulism					1		5	
Malaria	1				8		20	
Tularemia								
Lyme disease							19	
Lyssavirus infection(excluding rabies)								
Rift valley fever								
Melioidosis								
Legionellosis	4		8	4	120	46	1,665	
Leptospirosis		1			2		26	
Rocky mountain spotted fever								

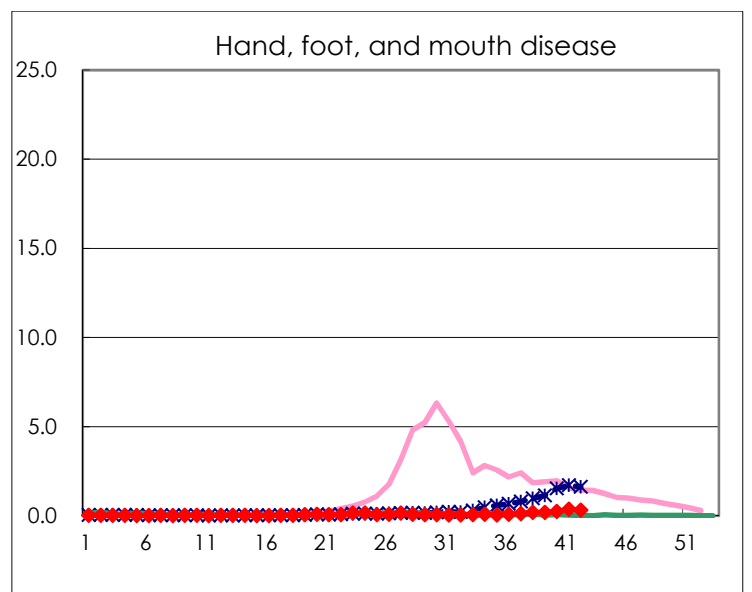
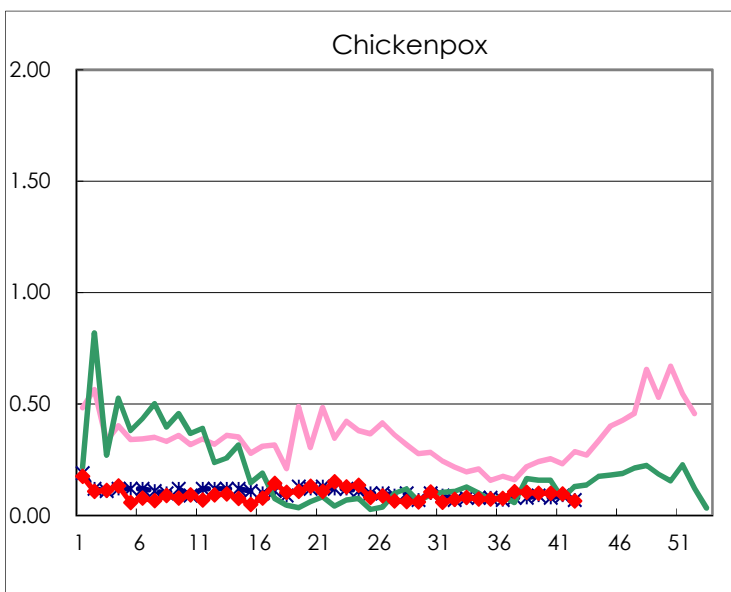
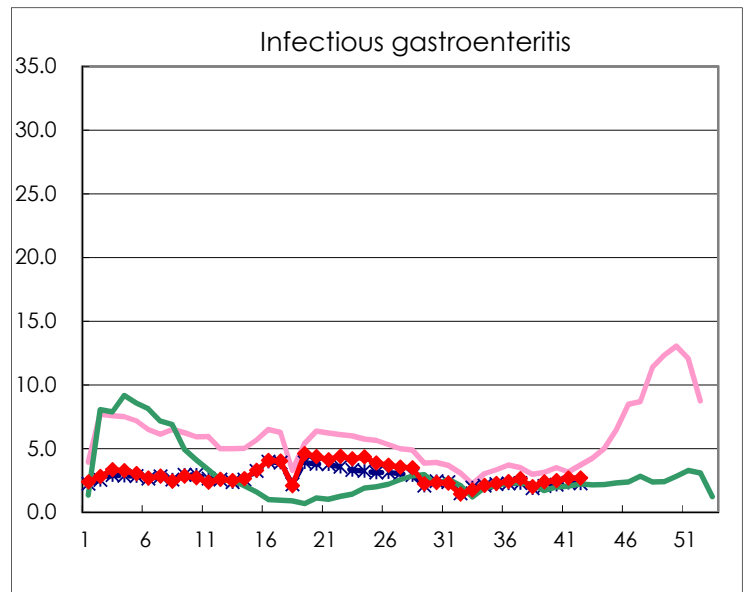
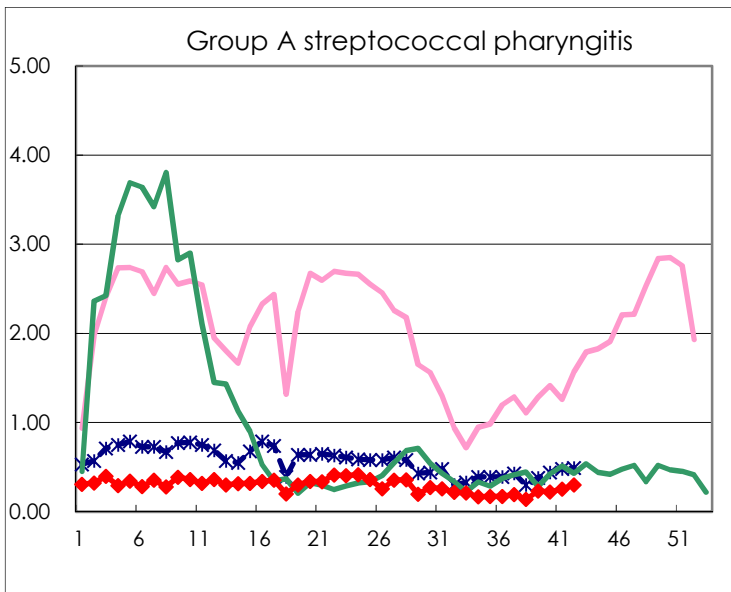
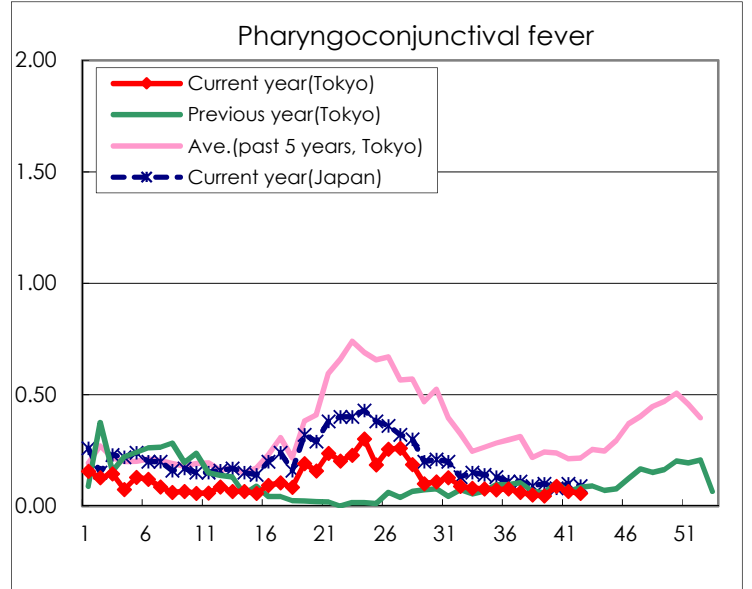
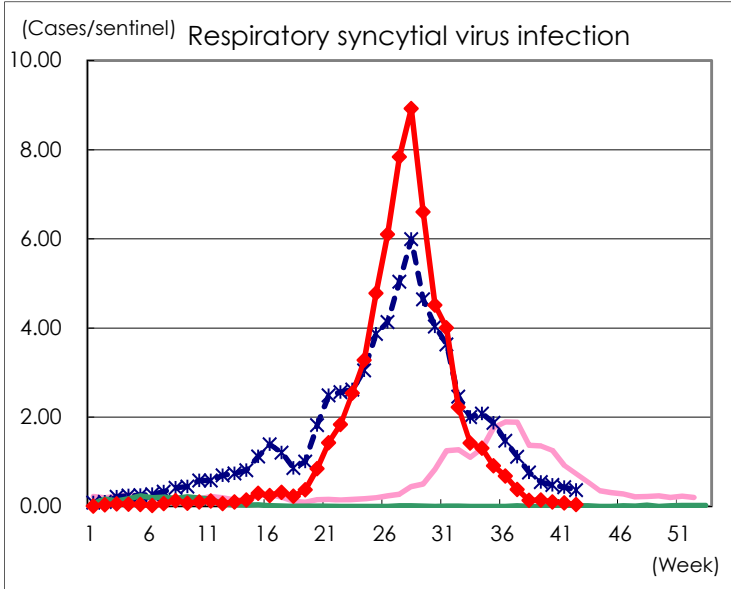
Category	Diseases	Tokyo					Japan	
		39th	40th	41st	42nd	Cum 2021	42nd	Cum 2021
V	Amebiasis	1	2	4	2	81	5	430
	Viral hepatitis(excluding hepatitis A and E)	3			1	41		157
	CRE infection	5	4	8	5	162	25	1,585
	Acute Flaccid Paralysis (excluding Acute poliomyelitis)					2	1	19
	Acute encephalitis(excluding JE and WNE)	1	1			18	6	273
	Cryptosporidiosis							5
	Creutzfeldt-Jakob disease					10	6	144
	Severe invasive streptococcal infections(TSLS)	6	2	1	2	61	13	508
	Acquired immunodeficiency syndrome (AIDS)	6	11	7	6	299	7	828
	Giardiasis					8		29
	Invasive <i>Haemophilus influenzae</i> disease					17	2	154
	Invasive meningococcal disease							2
	Invasive pneumococcal disease	2	3		1	108	12	1,061
	Varicella (limited to hospitalized case)				1	24	5	221
	Congenital rubella syndrome							1
	Syphilis	51	49	51	49	1,898	128	6,031
	Disseminated cryptococcosis	2		1		13	1	115
	Tetanus					2	3	81
	Vancomycin-resistant <i>S. aureus</i> infection							
	Vancomycin-resistant <i>Enterococcus</i> infection		1			9	4	97
	Pertussis	2	2	1		44	10	511
Rubella	1				2		10	
Measles							4	
MDRA infection					1		4	

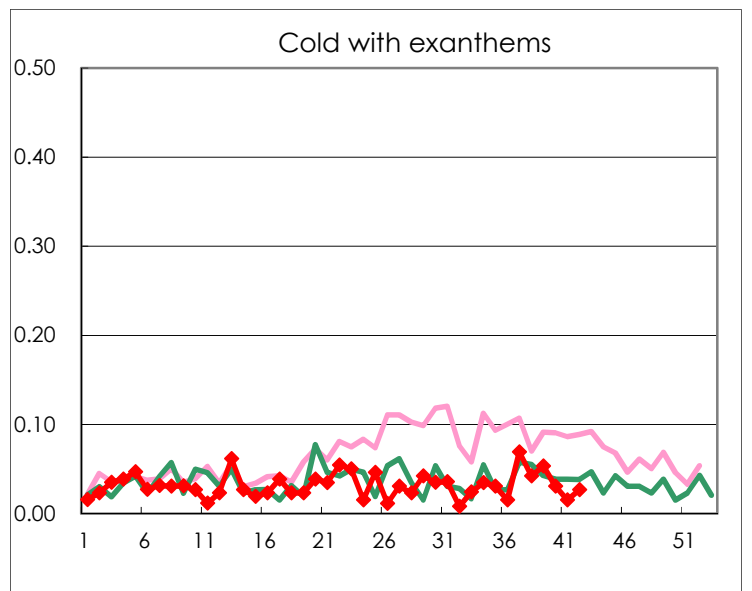
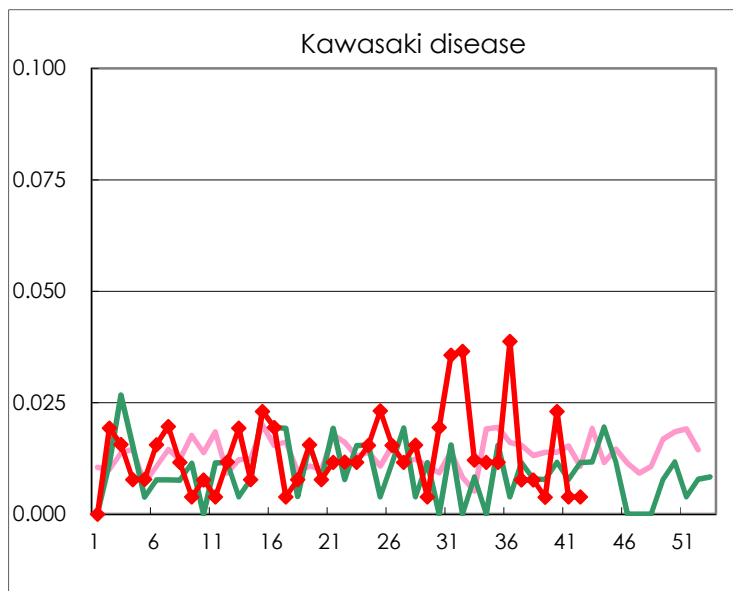
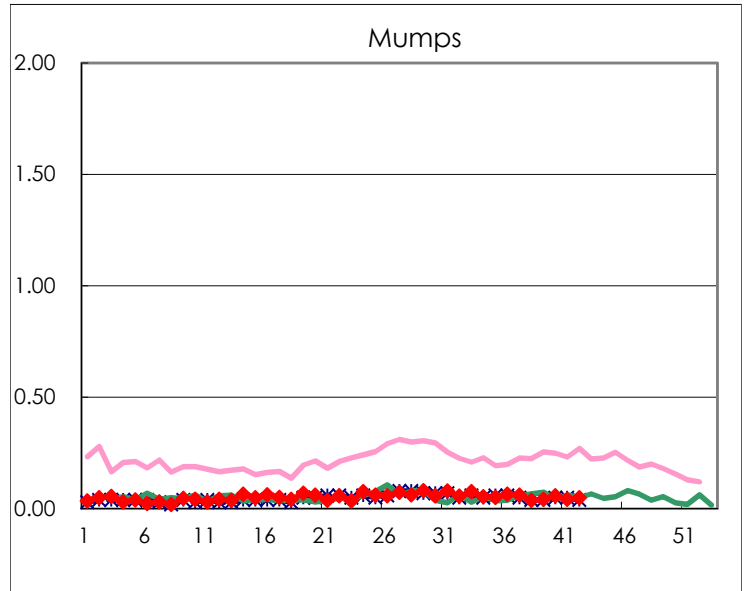
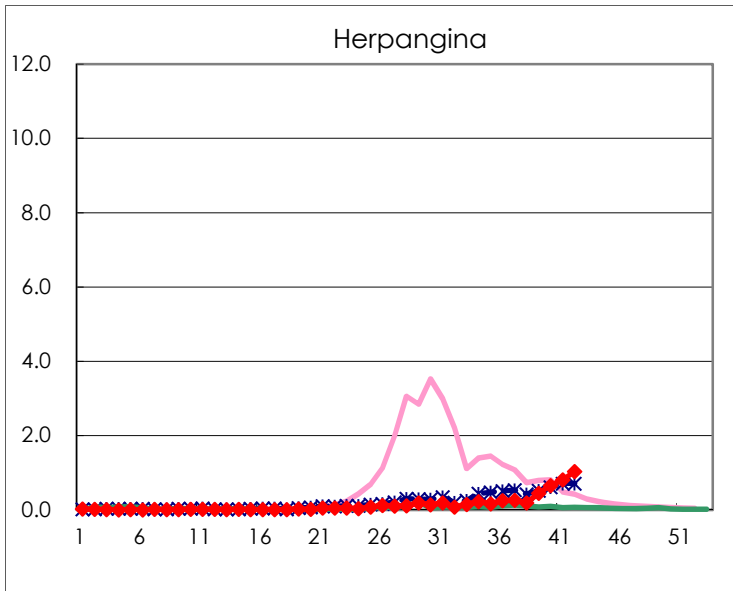
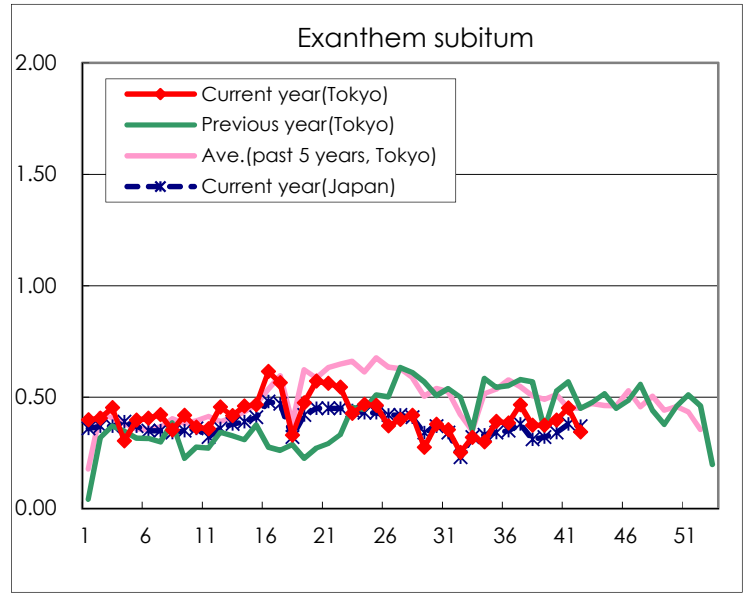
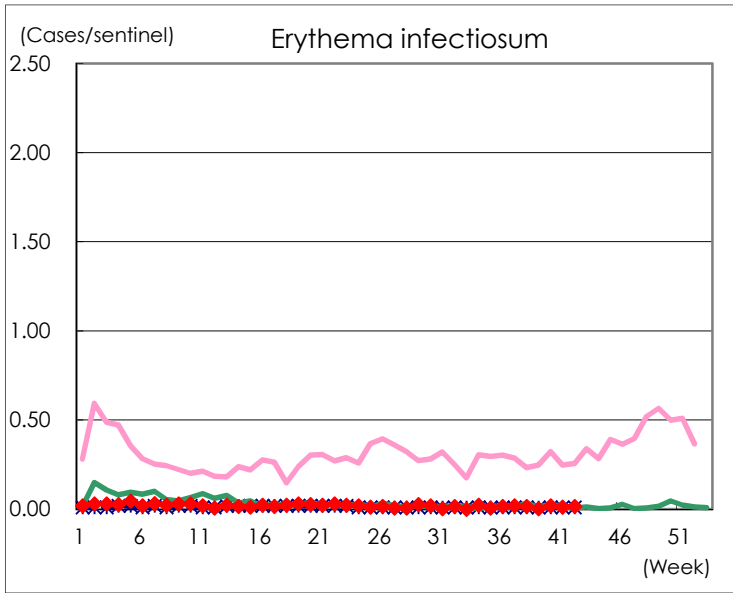
Number of patients with the diseases to be reported  
by the designated clinics and hospitals

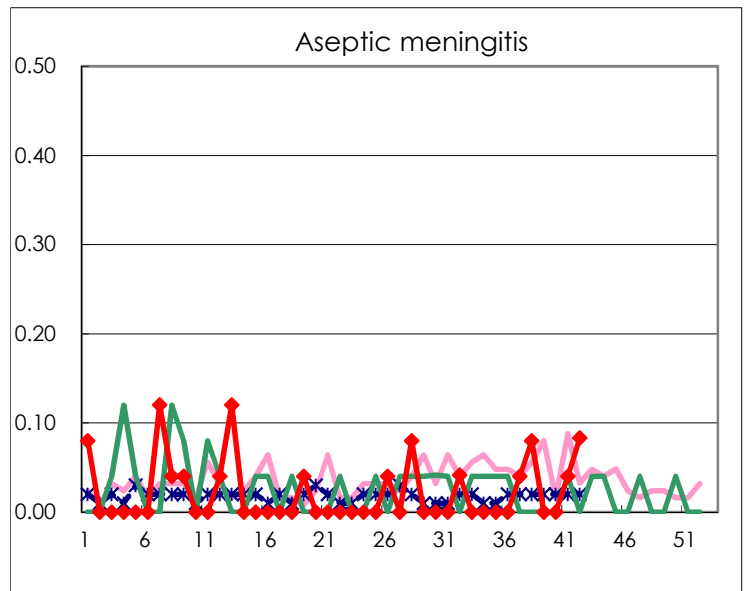
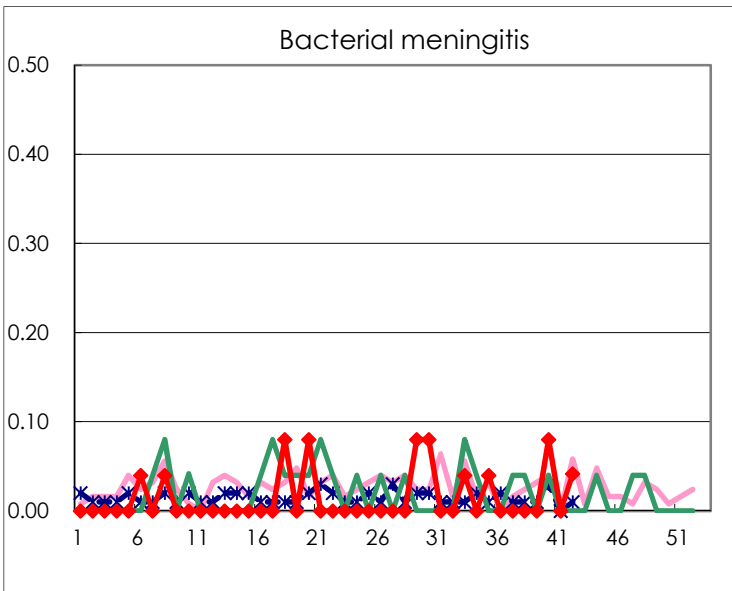
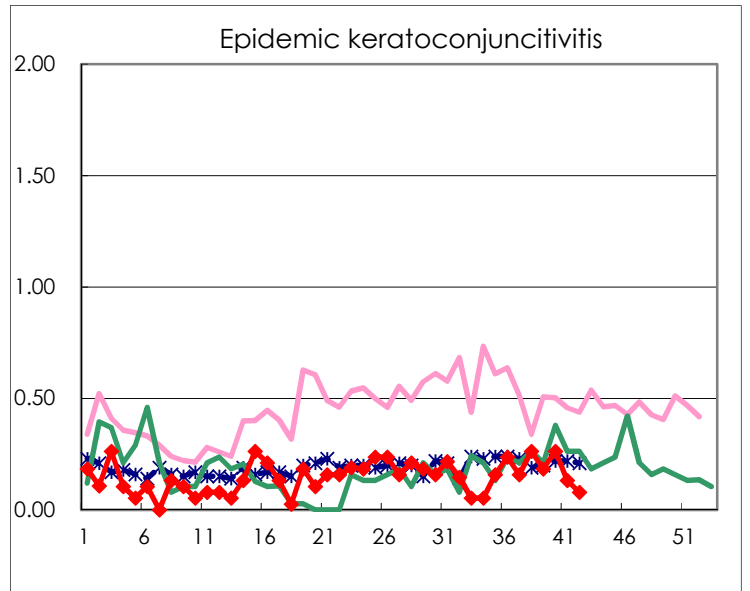
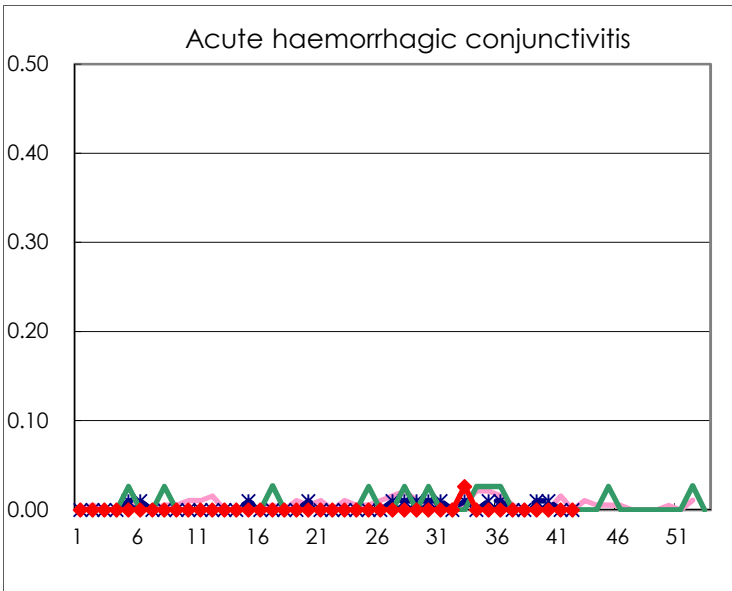
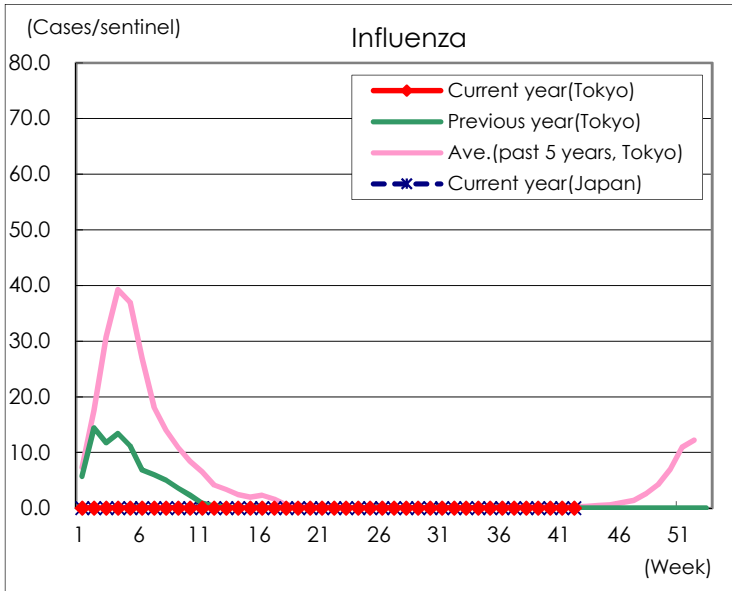
Diseases	Tokyo				
	39th	40th	41st	42nd	/sentinel
Respiratory syncytial virus infection	37	26	20	10	0.04
Pharyngoconjunctival fever	12	23	17	15	0.06
Group A streptococcal pharyngitis	61	58	65	78	0.30
Infectious gastroenteritis	623	645	691	696	2.69
Chickenpox	26	26	25	17	0.07
Hand, foot, and mouth disease	50	62	95	80	0.31
Erythema infectiosum	1	5	3	4	0.02
Exanthem subitum	98	103	116	89	0.34
Herpangina	117	170	209	267	1.03
Mumps	11	15	11	13	0.05
Kawasaki disease	1	6	1	1	0.00
Cold with exanthems	14	8	4	7	0.03
Influenza			1		
Acute hemorrhagic conjunctivitis					
Epidemic keratoconjunctivitis	7	10	5	3	0.08
Bacterial meningitis		2		1	0.04
Aseptic meningitis			1	2	0.08
<i>Mycoplasma pneumoniae</i>	1			1	0.04
Chlamydial pneumonia (excluding psittacosis)		1			
Infectious gastroenteritis (only by Rotavirus)					
Influenza-Associated Hospitalizations					

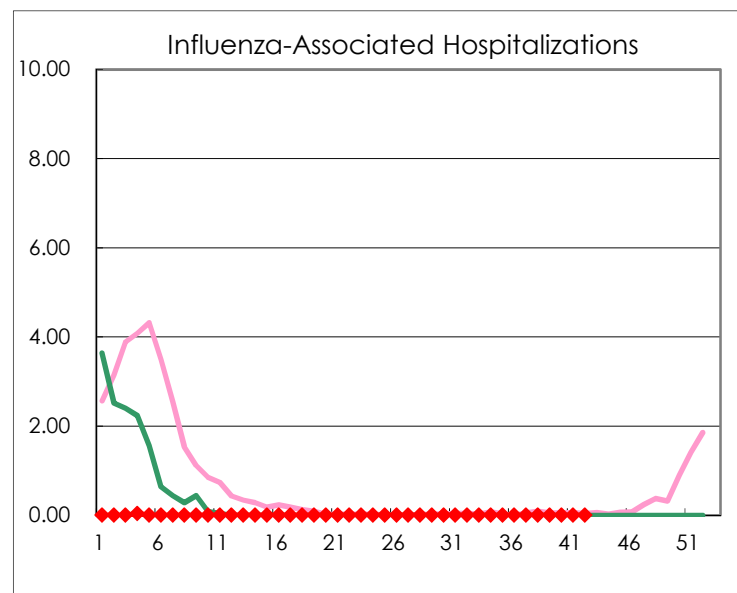
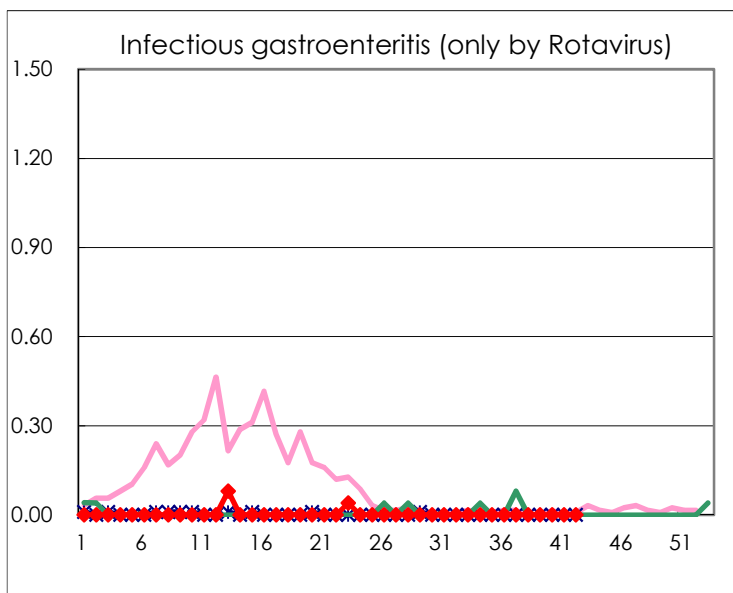
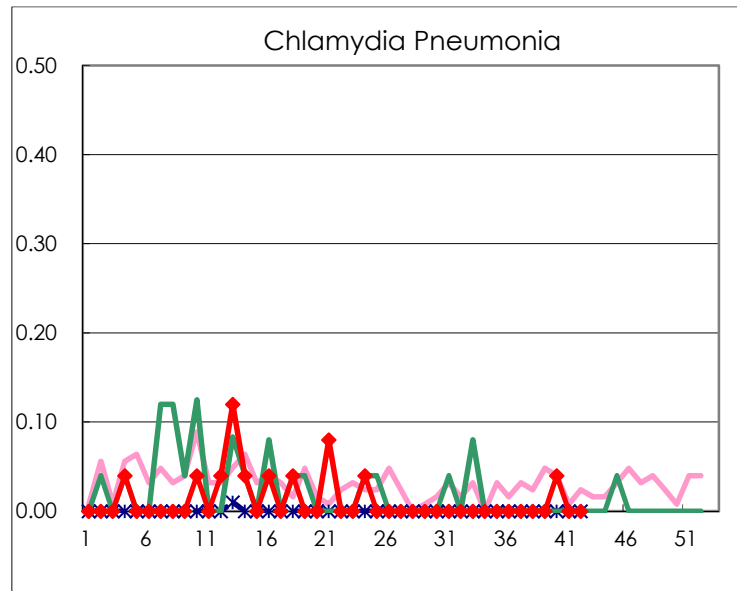
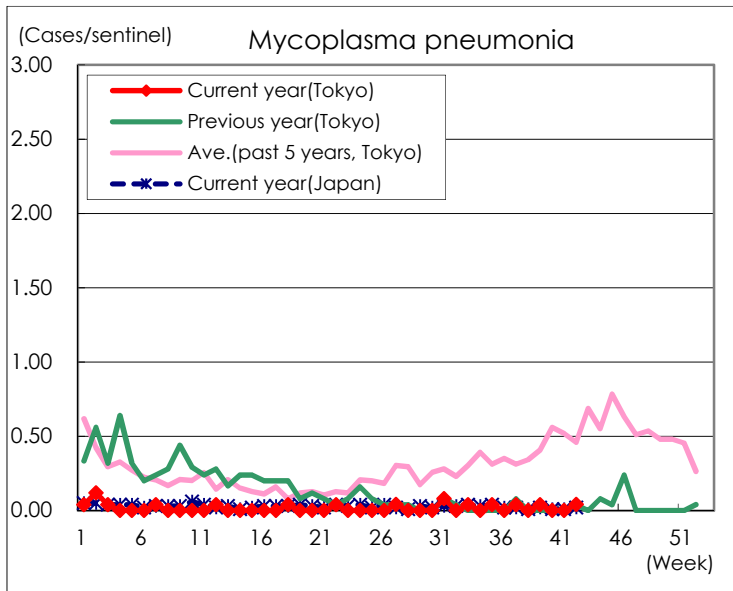
( Blank means 0. )

# Disease Trend Graph (weekly reported cases per sentinel in comparison)









Number of sentinel facilities for weekly reporting		
Types of sentinels	Number of sentinels	Sentinels having reported
Pediatric	264	259
Influenza	419	409
Ophthalmic	39	38
Specially-designated	25	24