

---

INFECTIOUS DISEASES WEEKLY REPORT

# TOKYO IDWR

Tokyo Metropolitan Infectious Disease Surveillance Center

## 5 November 2021 / Number 43 ( 10/25 ~ 10/31 )

### Surveillance System in Tokyo, Japan

The infectious diseases which all physicians must report  
All physicians must report to health centers the incidence of the diseases which are shown at page one. Health centers electronically report the individual cases to Tokyo Metropolitan Infectious Disease Surveillance Center.

The infectious diseases required to be reported by the sentinels  
The numbers of patients who visit the sentinel clinics or hospitals during a week are reported to health centers in Tokyo. And they electronically report the numbers to Tokyo Metropolitan Infectious Disease Surveillance Center. We have about 500 sentinel clinics and hospitals in Tokyo.

Tokyo Metropolitan Institute of Public Health

TEL:81-3-3363-3213 FAX:81-3-5332-7365

e-mail:[www@tokyo-eiken.go.jp](mailto:www@tokyo-eiken.go.jp)

URL:[idsc.tokyo-eiken.go.jp/](http://idsc.tokyo-eiken.go.jp/)

---

Number of patients with the diseases which all physicians must report

Category	Diseases	Tokyo					Japan	
		40th	41st	42nd	43rd	Cum 2021	43rd	Cum 2021
I	Ebola hemorrhagic fever							
	Crimean-Congo hemorrhagic fever							
	Smallpox							
	South American hemorrhagic fever							
	Plague							
	Marburg disease							
	Lassa fever							
II	Acute poliomyelitis							
	Tuberculosis	65	47	38	41	1,833	240	12,955
	Diphtheria							
	Severe Acute Respiratory Syndrome(SARS)							
	Middle East Respiratory Syndrome (MERS)							
	Avian influenza H5N1							
	Avian influenza H7N9							
III	Cholera							
	Shigellosis					2		6
	Enterohemorrhagic Escherichia coli infection	2	6	7	9	291	70	2,729
	Typhoid fever							1
	Paratyphoid fever							
IV	Hepatitis E			1	2	92	4	361
	West Nile fever							
	Hepatitis A			1		12		62
	Echinococcosis					1		22
	Yellow fever							
	Psittacosis							8
	Omsk hemorrhagic fever							
	Relapsing fever						1	7
	Kyasanur forest disease							
	Q fever					1		1
	Rabies							
	Coccidioidomycosis							
	Monkeypox							
	Zika virus infection							
	Severe Fever with Thrombocytopenia Syndrome						4	107
	Hemorrhagic fever with renal syndrome							
	Western equine encephalitis							
	Tick-borne encephalitis							
	Anthrax							
	Chikungunya fever							
	Scrub typhus(Tsutsugamushi disease)					2	6	156
	Dengue fever							5
	Eastern equine encephalitis							
	Avian influenza (excluding H5N1 and H7N9)							
	Nipah virus infection							
	Japanese spotted fever					3	17	427
	Japanese encephalitis						1	3
	Hantavirus pulmonary syndrome							
	Herpes B virus infection							
	Glanders							
	Brucellosis							1
	Venezuelan equine encephalitis							
	Hendra virus infection							
	Epidemic typhus							
Botulism					1		5	
Malaria				1	9	1	21	
Tularemia								
Lyme disease						1	20	
Lyssavirus infection(excluding rabies)								
Rift valley fever								
Melioidosis								
Legionellosis		8	4	3	123	63	1,732	
Leptospirosis	1			1	3	1	30	
Rocky mountain spotted fever								

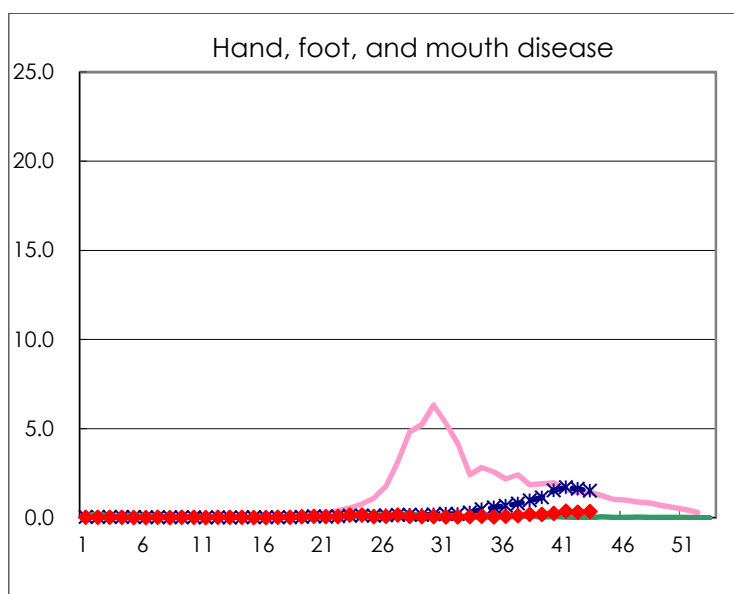
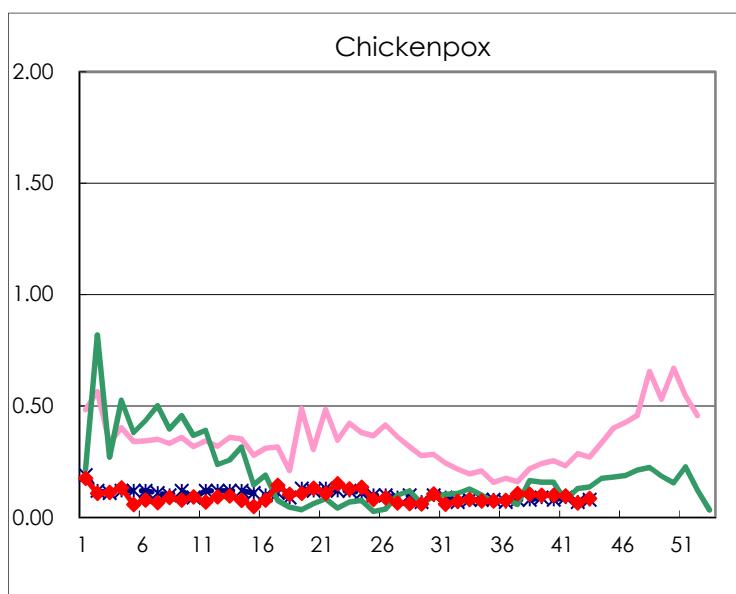
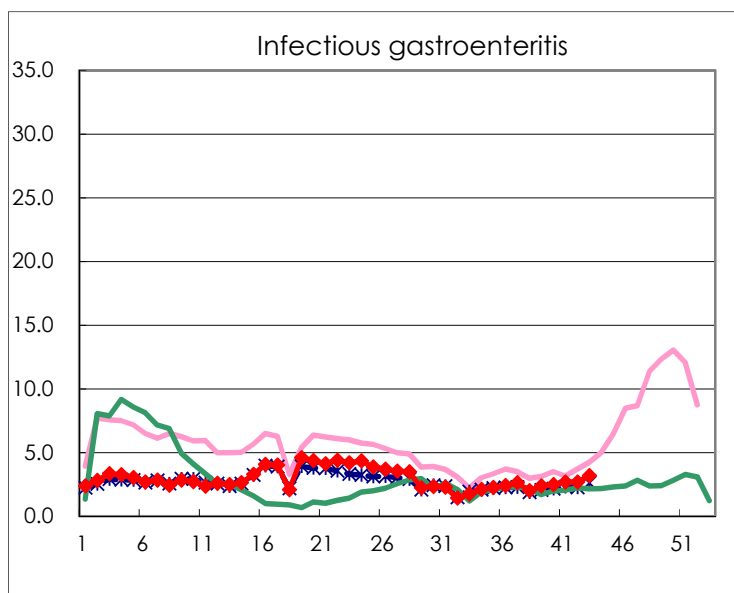
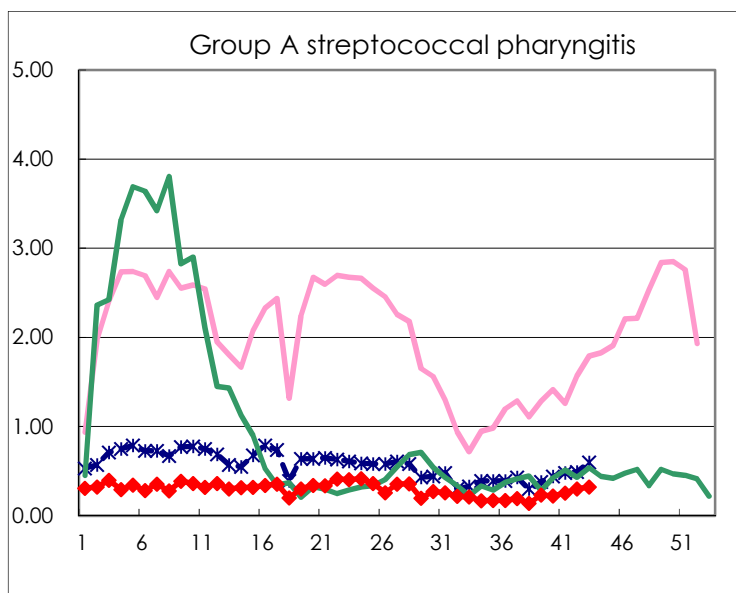
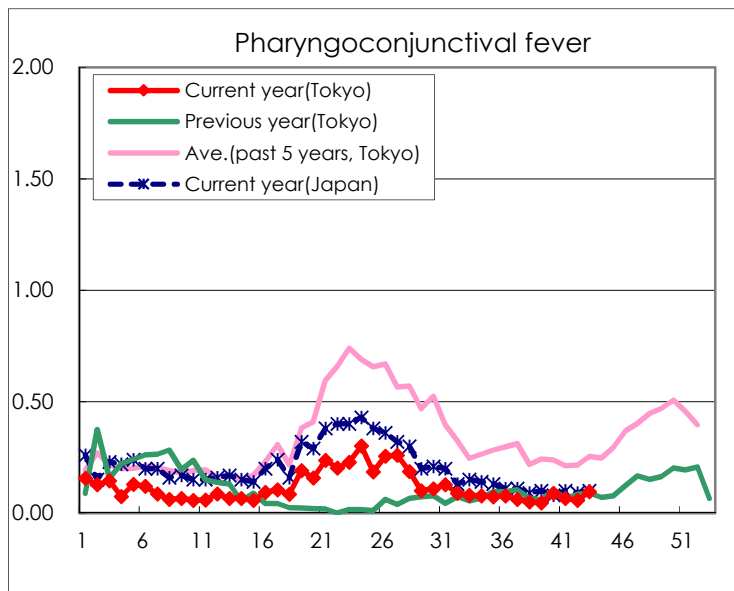
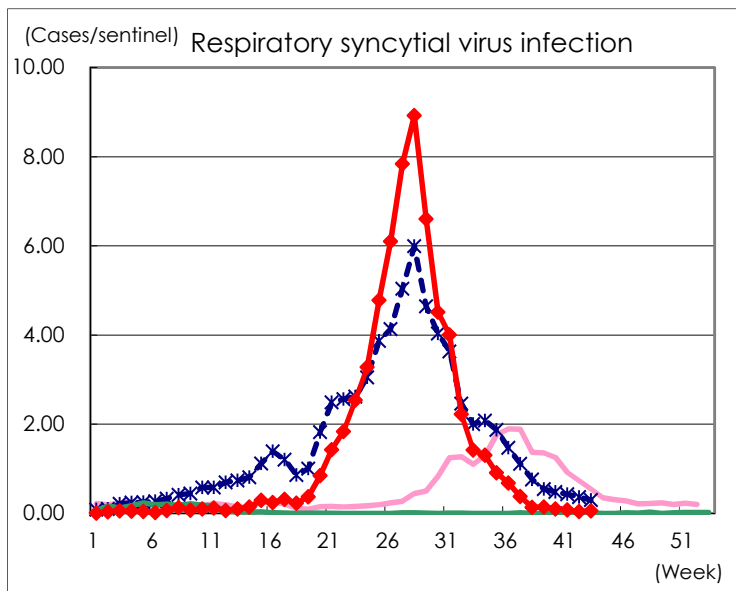
Category	Diseases	Tokyo					Japan	
		40th	41st	42nd	43rd	Cum 2021	43rd	Cum 2021
V	Amebiasis	2	4	2	2	83	7	440
	Viral hepatitis(excluding hepatitis A and E)			1	1	42	2	160
	CRE infection	4	8	4	2	163	37	1,631
	Acute Flaccid Paralysis (excluding Acute poliomyelitis)					2	1	20
	Acute encephalitis(excluding JE and WNE)	1			1	19	3	278
	Cryptosporidiosis							5
	Creutzfeldt-Jakob disease					10	2	148
	Severe invasive streptococcal infections(TSLS)	2	1	2	1	62	12	526
	Acquired immunodeficiency syndrome (AIDS)	11	7	7	3	303	11	847
	Giardiasis					8		29
	Invasive <i>Haemophilus influenzae</i> disease					17	1	157
	Invasive meningococcal disease							2
	Invasive pneumococcal disease	3		2		109	21	1,094
	Varicella (limited to hospitalized case)			1	1	25	7	230
	Congenital rubella syndrome							1
	Syphilis	49	51	49	60	1,958	130	6,233
	Disseminated cryptococcosis		1			13	3	119
	Tetanus					2	1	82
	Vancomycin-resistant <i>S. aureus</i> infection							
	Vancomycin-resistant <i>Enterococcus</i> infection	2	1			11		100
Pertussis	2	1	1	2	47	13	511	
Rubella					2		10	
Measles							4	
MDRA infection					1		4	

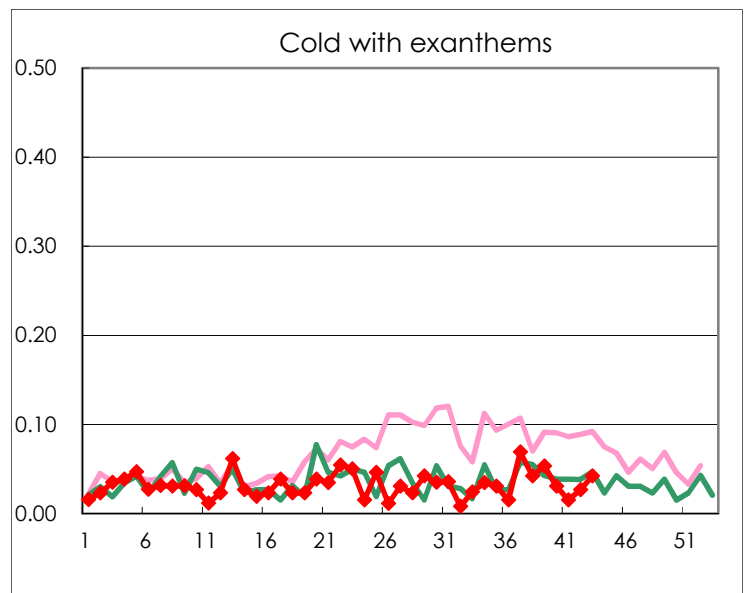
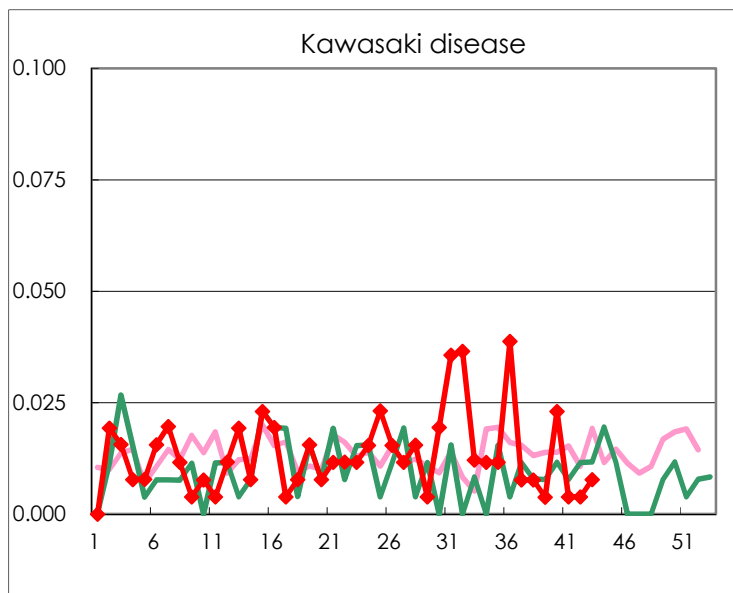
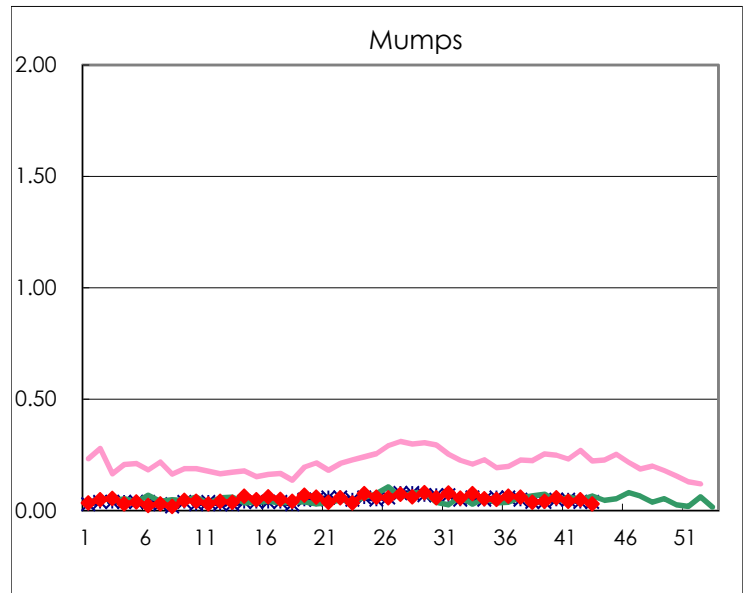
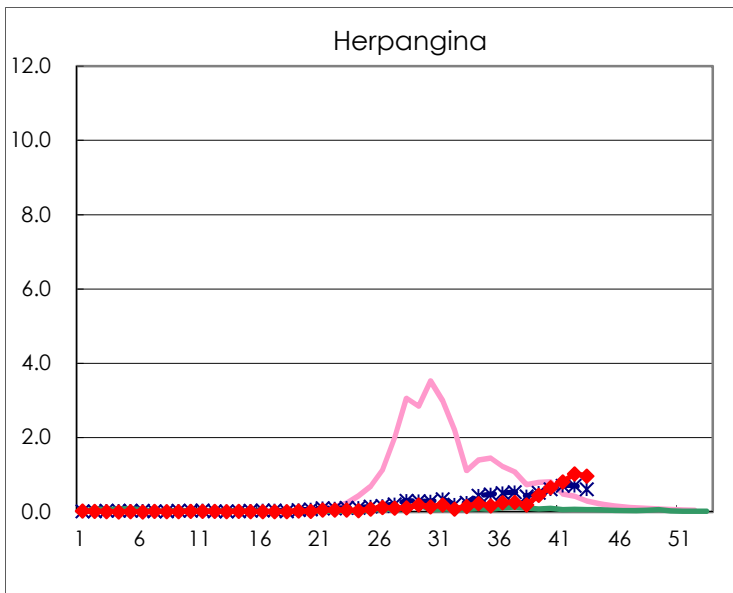
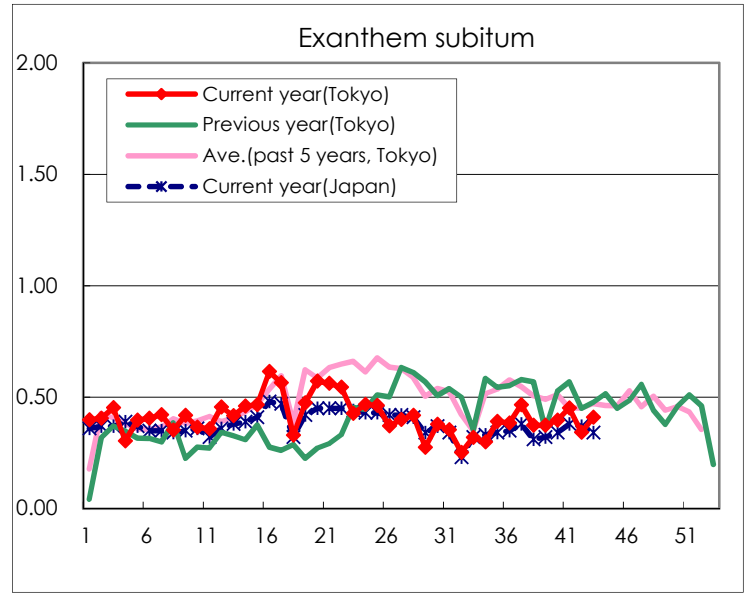
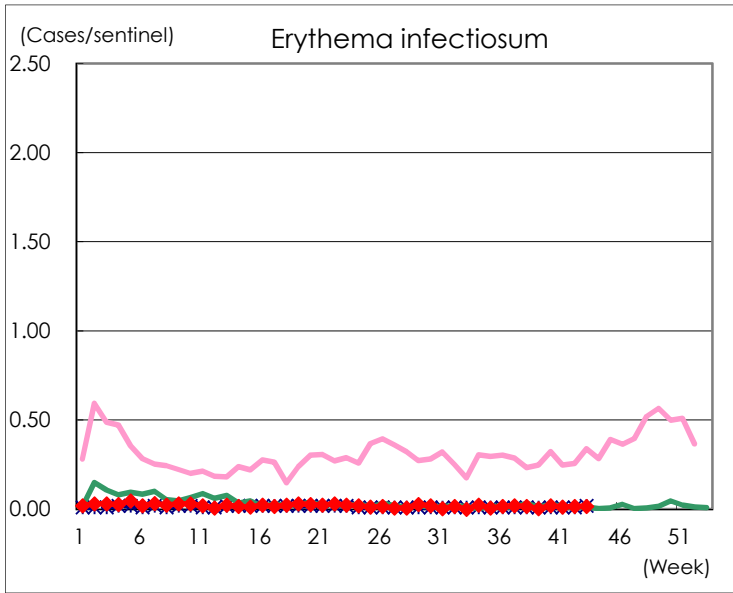
Number of patients with the diseases to be reported  
by the designated clinics and hospitals

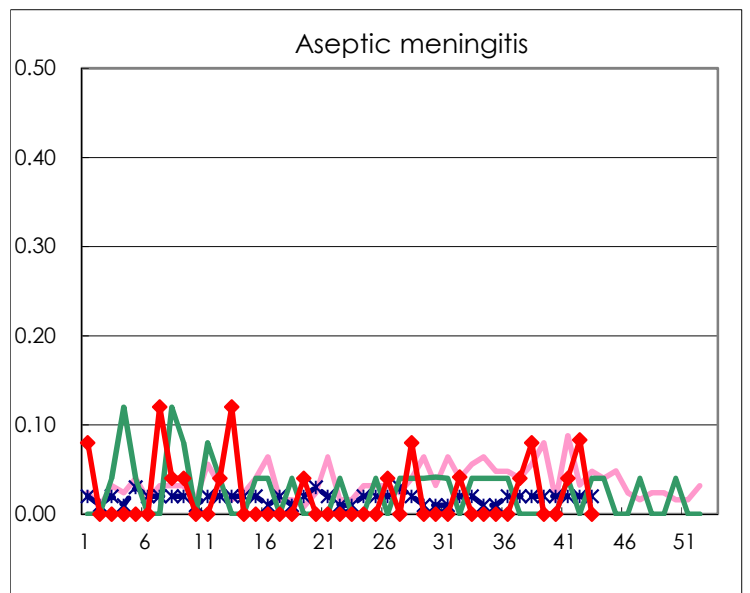
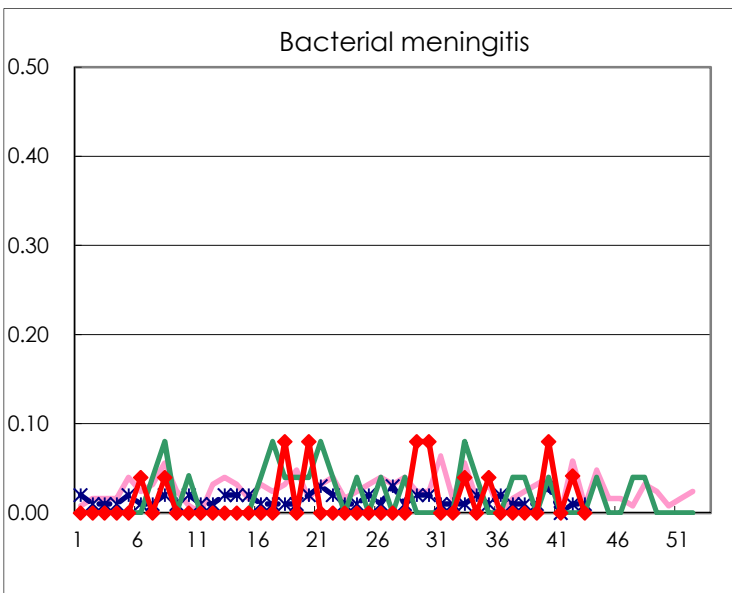
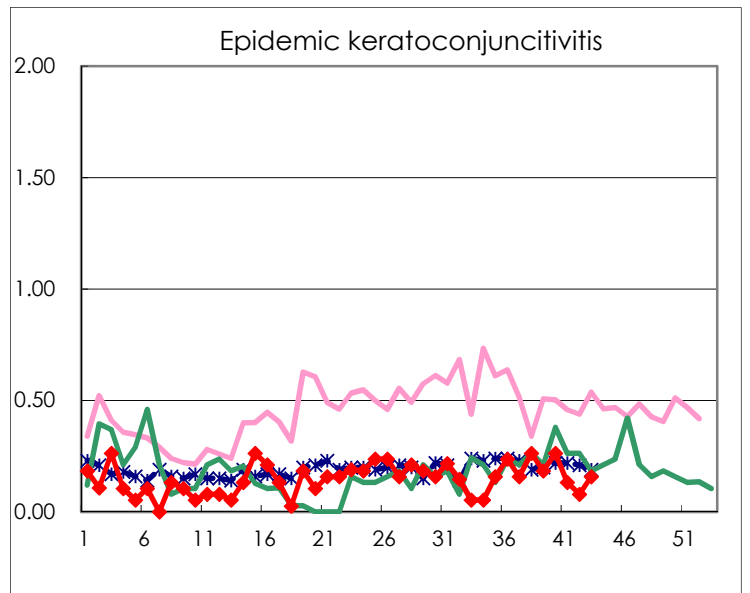
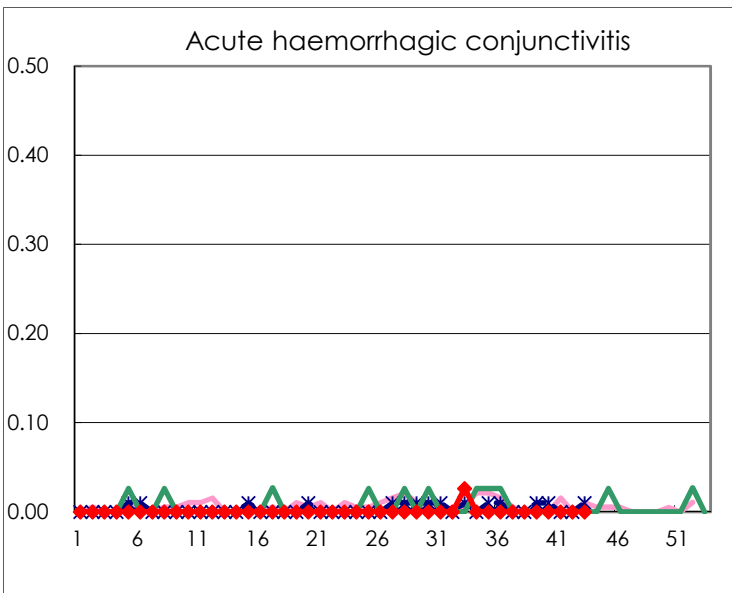
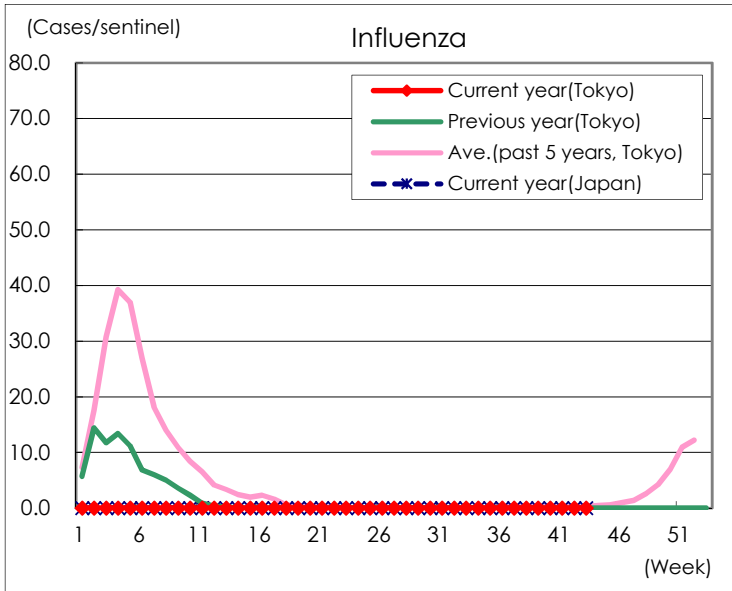
Diseases	Tokyo				
	40th	41st	42nd	43rd	/sentinel
Respiratory syncytial virus infection	26	20	10	14	0.05
Pharyngoconjunctival fever	23	17	15	25	0.10
Group A streptococcal pharyngitis	58	65	78	84	0.32
Infectious gastroenteritis	645	691	696	821	3.17
Chickenpox	26	25	17	22	0.08
Hand, foot, and mouth disease	62	95	81	90	0.35
Erythema infectiosum	5	3	4	4	0.02
Exanthem subitum	103	116	89	106	0.41
Herpangina	170	209	267	250	0.97
Mumps	15	11	13	8	0.03
Kawasaki disease	6	1	1	2	0.01
Cold with exanthems	8	4	7	11	0.04
Influenza		1			
Acute hemorrhagic conjunctivitis					
Epidemic keratoconjunctivitis	10	5	3	6	0.16
Bacterial meningitis	2		1		
Aseptic meningitis		1	2		
<i>Mycoplasma pneumoniae</i>			1		
Chlamydial pneumonia (excluding psittacosis)	1				
Infectious gastroenteritis (only by Rotavirus)					
Influenza-Associated Hospitalizations					

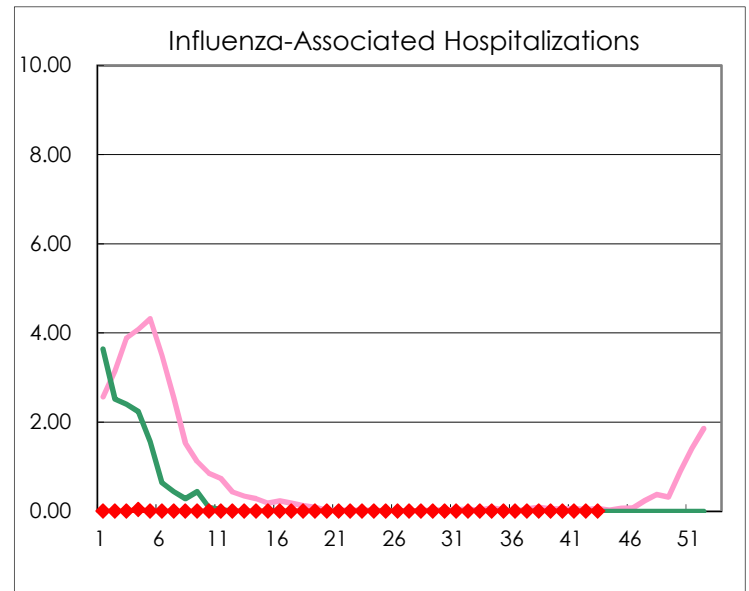
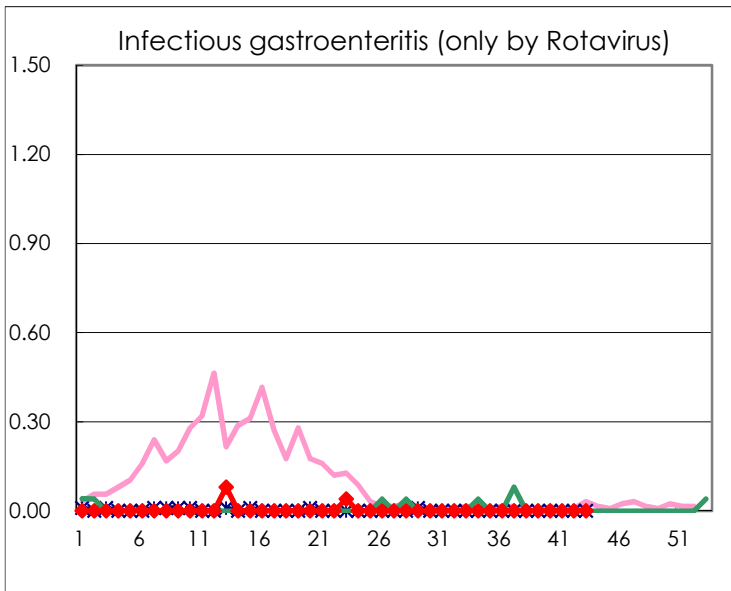
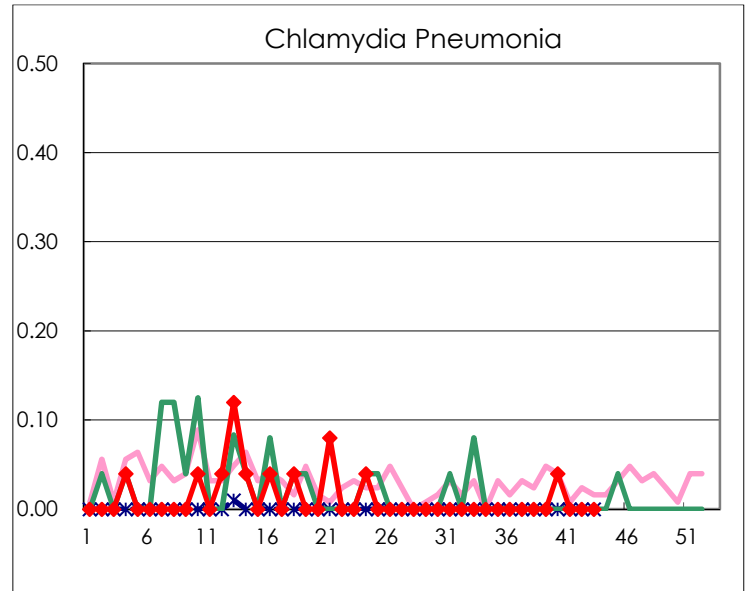
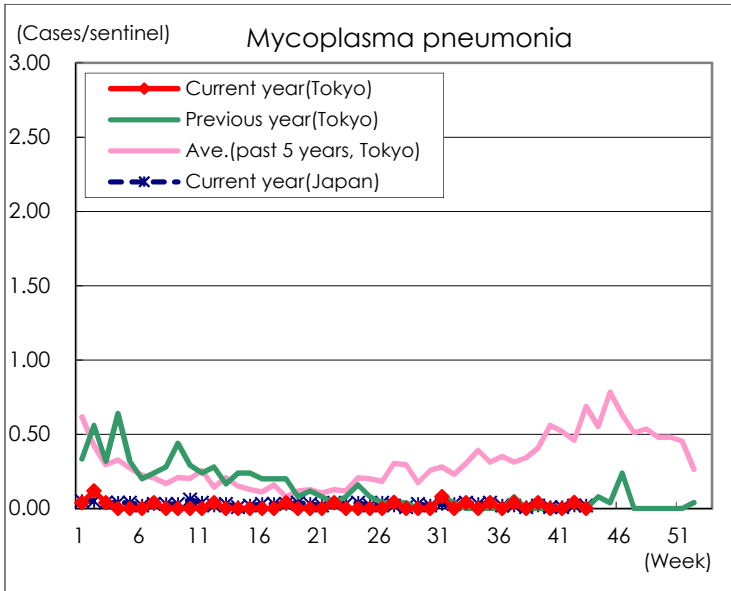
( Blank means 0. )

# Disease Trend Graph (weekly reported cases per sentinel in comparison)









Number of sentinel facilities for weekly reporting		
Types of sentinels	Number of sentinels	Sentinels having reported
Pediatric	264	259
Influenza	419	410
Ophthalmic	39	38
Specially-designated	25	25