
INFECTIOUS DISEASES WEEKLY REPORT

TOKYO IDWR

Tokyo Metropolitan Infectious Disease Surveillance Center

25 November 2021 / Number 46 (11/15 ~ 11/21)

Surveillance System in Tokyo, Japan

The infectious diseases which all physicians must report
All physicians must report to health centers the incidence of the diseases which are shown at page one. Health centers electronically report the individual cases to Tokyo Metropolitan Infectious Disease Surveillance Center.

The infectious diseases required to be reported by the sentinels
The numbers of patients who visit the sentinel clinics or hospitals during a week are reported to health centers in Tokyo. And they electronically report the numbers to Tokyo Metropolitan Infectious Disease Surveillance Center. We have about 500 sentinel clinics and hospitals in Tokyo.

Tokyo Metropolitan Institute of Public Health

TEL:81-3-3363-3213 FAX:81-3-5332-7365

e-mail:www@tokyo-eiken.go.jp

URL:idsc.tokyo-eiken.go.jp/

Number of patients with the diseases which all physicians must report

Category	Diseases	Tokyo					Japan	
		43rd	44th	45th	46th	Cum 2021	46th	Cum 2021
I	Ebola hemorrhagic fever							
	Crimean-Congo hemorrhagic fever							
	Smallpox							
	South American hemorrhagic fever							
	Plague							
	Marburg disease							
	Lassa fever							
II	Acute poliomyelitis							
	Tuberculosis	52	37	44	36	1,963	261	13,933
	Diphtheria							
	Severe Acute Respiratory Syndrome(SARS)							
	Middle East Respiratory Syndrome (MERS)							
	Avian influenza H5N1							
	Avian influenza H7N9							
III	Cholera							
	Shigellosis					2		7
	Enterohemorrhagic Escherichia coli infection	9	2	5	3	301	63	2,901
	Typhoid fever					1		3
	Paratyphoid fever							
IV	Hepatitis E	2	1	1	2	96	8	383
	West Nile fever							
	Hepatitis A					12		64
	Echinococcosis					1		23
	Yellow fever							
	Psittacosis							8
	Omsk hemorrhagic fever							
	Relapsing fever							8
	Kyasanur forest disease							
	Q fever					1		1
	Rabies							
	Coccidioidomycosis							
	Monkeypox							
	Zika virus infection							
	Severe Fever with Thrombocytopenia Syndrome							109
	Hemorrhagic fever with renal syndrome							
	Western equine encephalitis							
	Tick-borne encephalitis							
	Anthrax							
	Chikungunya fever							
	Scrub typhus(Tsutsugamushi disease)			1		3	45	250
	Dengue fever							6
	Eastern equine encephalitis							
	Avian influenza (excluding H5N1 and H7N9)							
	Nipah virus infection							
	Japanese spotted fever			1		4	6	470
	Japanese encephalitis							3
	Hantavirus pulmonary syndrome							
	Herpes B virus infection							
	Glanders							
	Brucellosis							1
	Venezuelan equine encephalitis							
	Hendra virus infection							
Epidemic typhus								
Botulism					1		5	
Malaria	1		1		10		25	
Tularemia								
Lyme disease							21	
Lyssavirus infection(excluding rabies)								
Rift valley fever								
Melioidosis								
Legionellosis	6	5	6	6	143	56	1,901	
Leptospirosis	1				3		32	
Rocky mountain spotted fever								

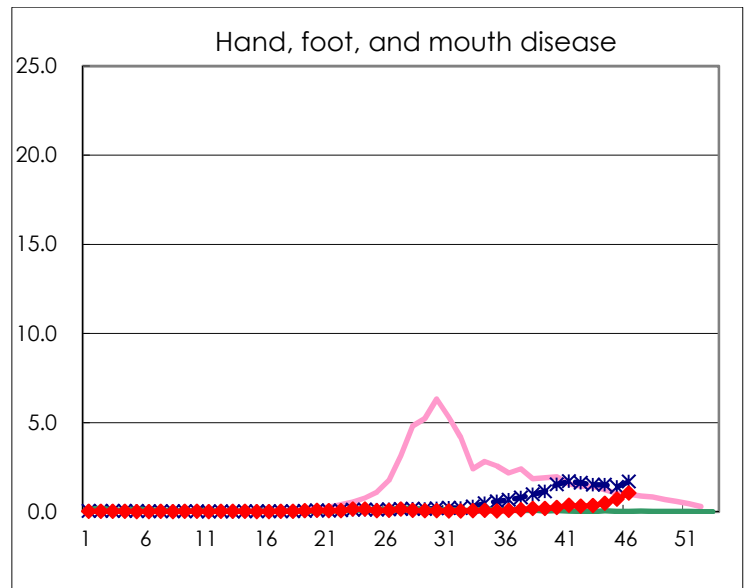
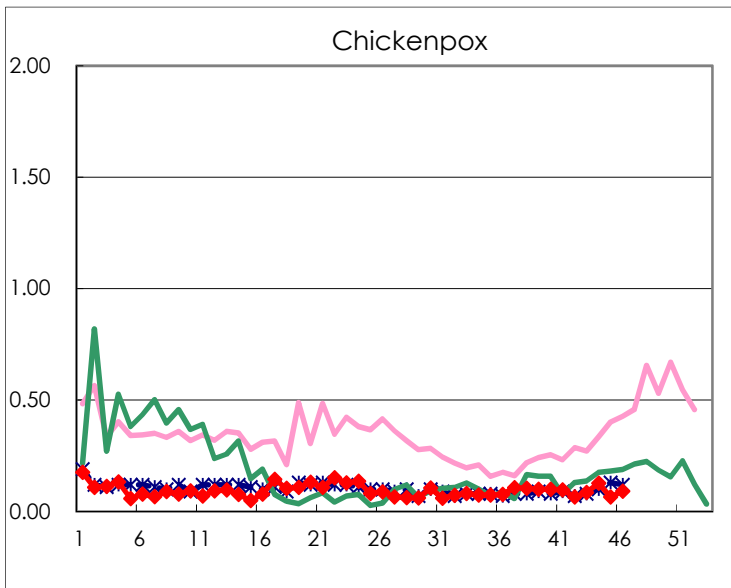
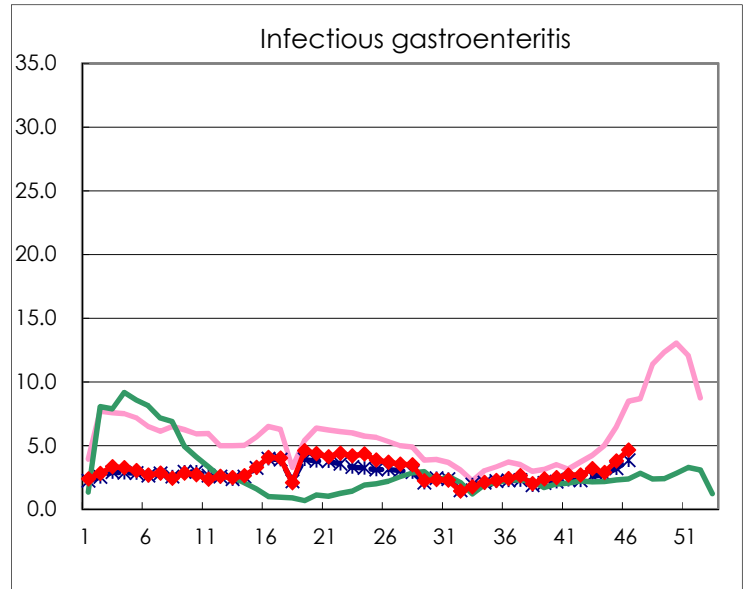
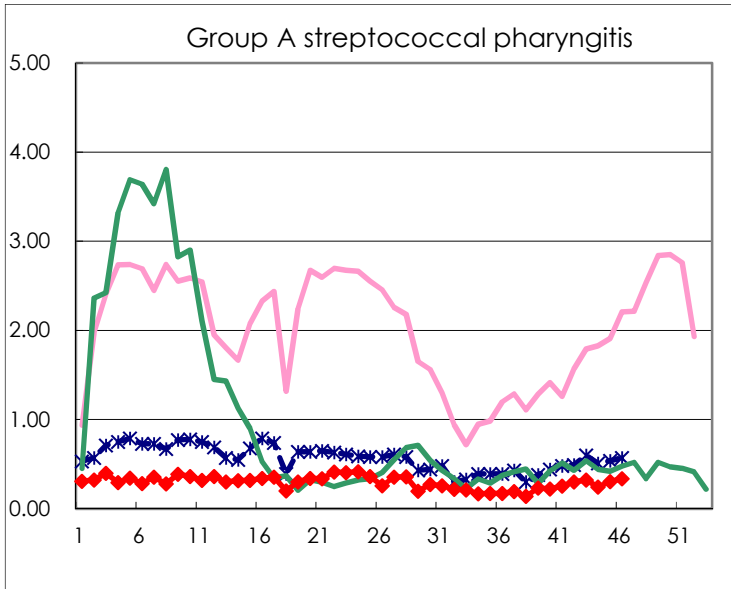
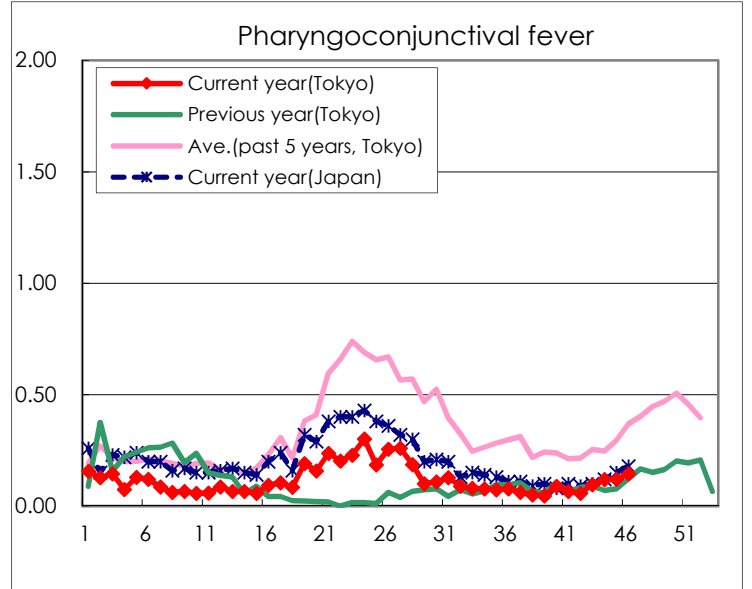
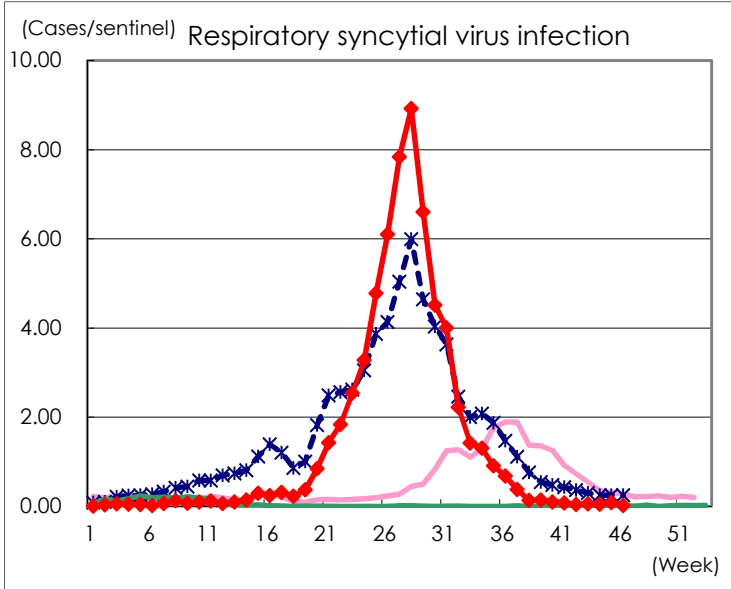
Category	Diseases	Tokyo				Japan		
		43rd	44th	45th	46th	Cum 2021	46th	Cum 2021
V	Amebiasis	2		2	4	89	10	464
	Viral hepatitis(excluding hepatitis A and E)	1	1			43	2	169
	CRE infection	2	5	8	2	178	25	1,770
	Acute Flaccid Paralysis (excluding Acute poliomyelitis)					2		21
	Acute encephalitis(excluding JE and WNE)	1				19	2	291
	Cryptosporidiosis							5
	Creutzfeldt-Jakob disease		1			11	2	160
	Severe invasive streptococcal infections(TSLS)	1	3	3		68	8	559
	Acquired immunodeficiency syndrome (AIDS)	3	10	7	8	330	15	925
	Giardiasis	1			1	10	1	34
	Invasive <i>Haemophilus influenzae</i> disease			1		18	4	170
	Invasive meningococcal disease							2
	Invasive pneumococcal disease		1	2		112	20	1,184
	Varicella (limited to hospitalized case)	1	1	1		27	5	252
	Congenital rubella syndrome							1
	Syphilis	61	58	69	51	2,137	120	6,789
	Disseminated cryptococcosis		1			14	4	134
	Tetanus					2		85
	Vancomycin-resistant <i>S. aureus</i> infection							
	Vancomycin-resistant <i>Enterococcus</i> infection					11		109
	Pertussis	2	1	1	1	50	18	570
Rubella					2		11	
Measles							5	
MDRA infection					1		4	

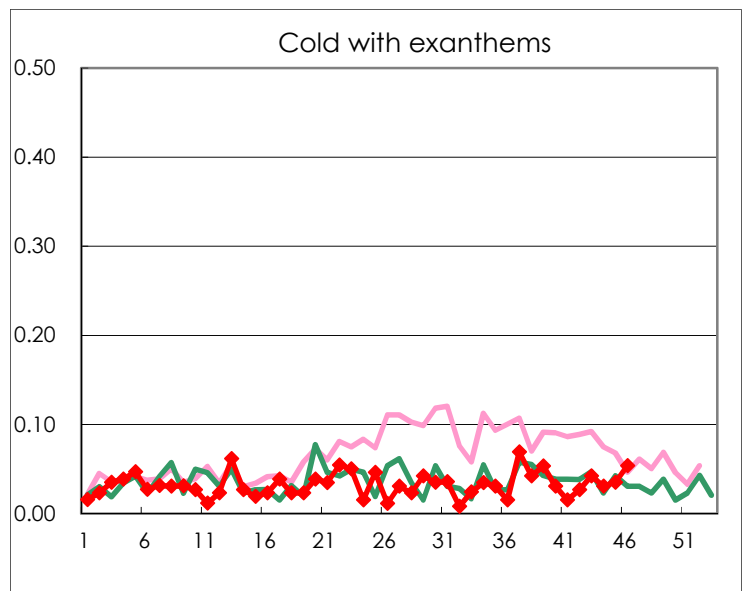
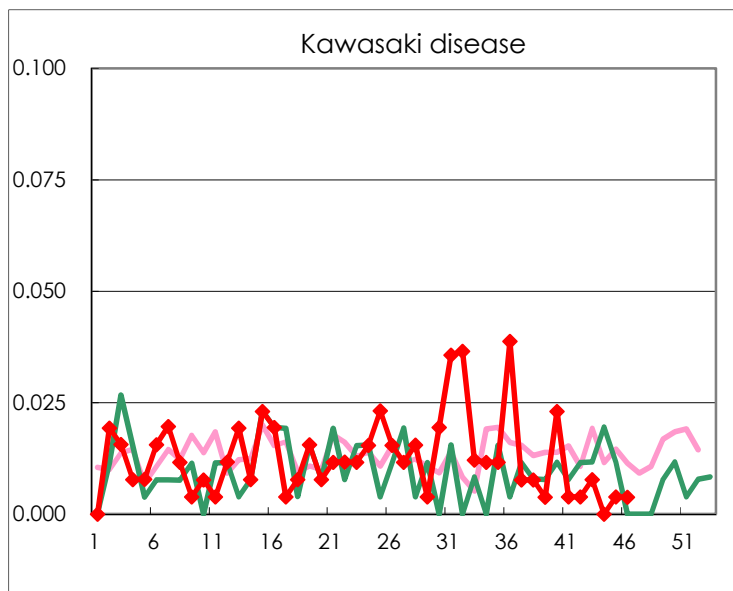
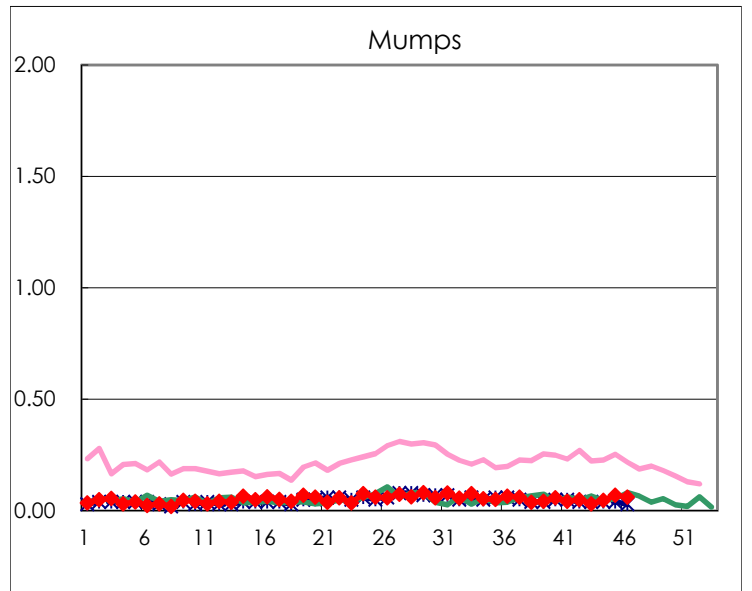
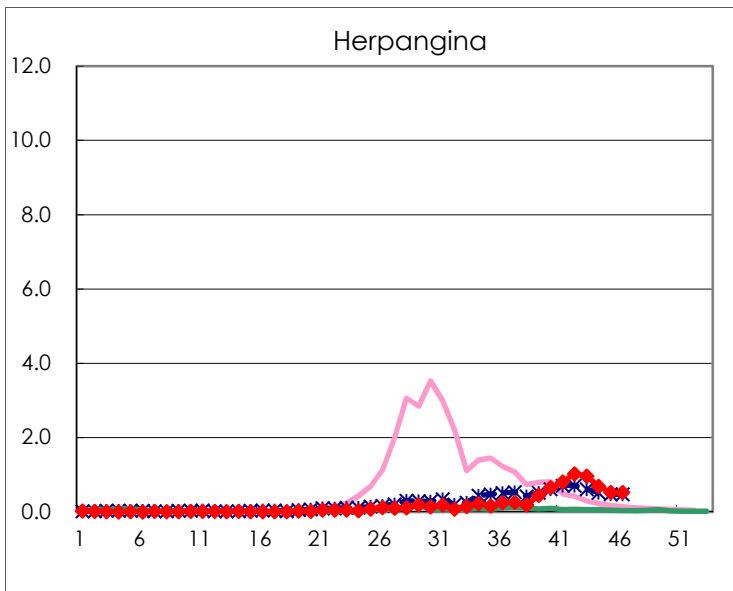
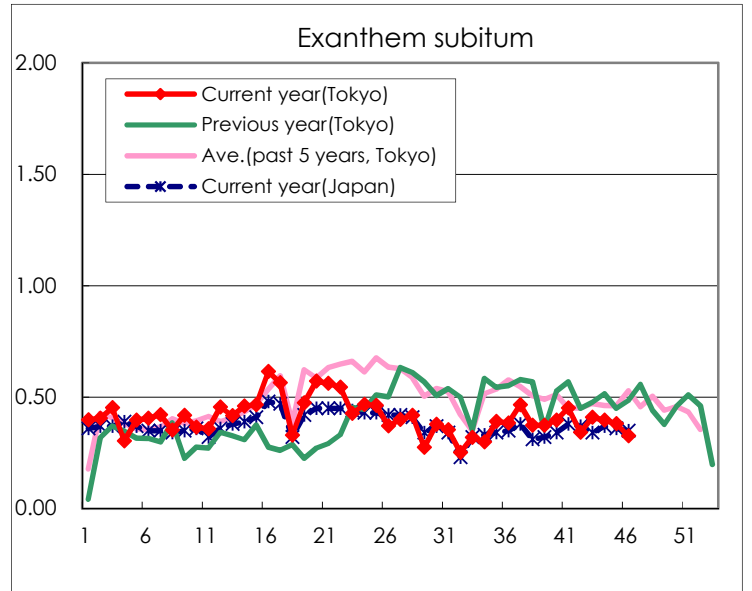
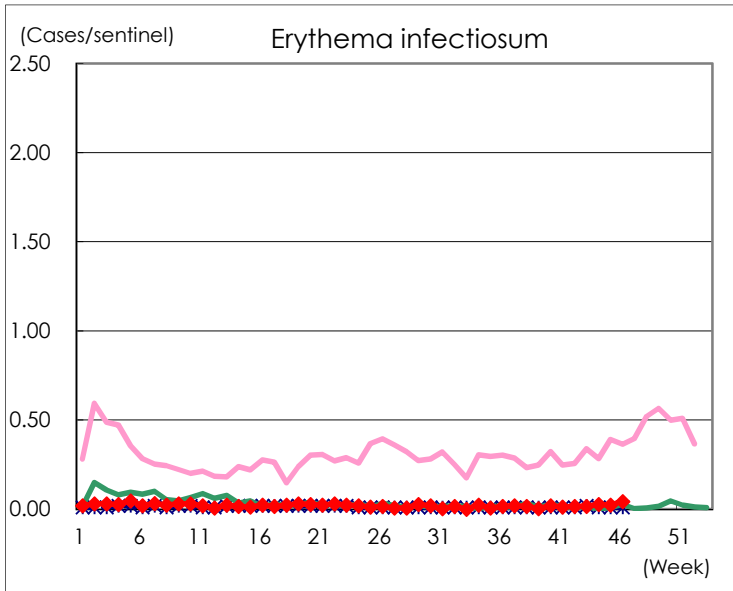
Number of patients with the diseases to be reported
by the designated clinics and hospitals

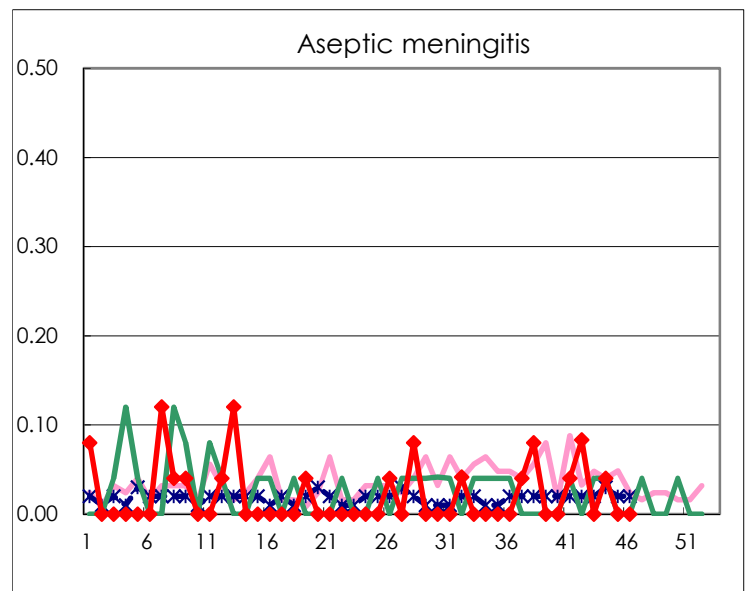
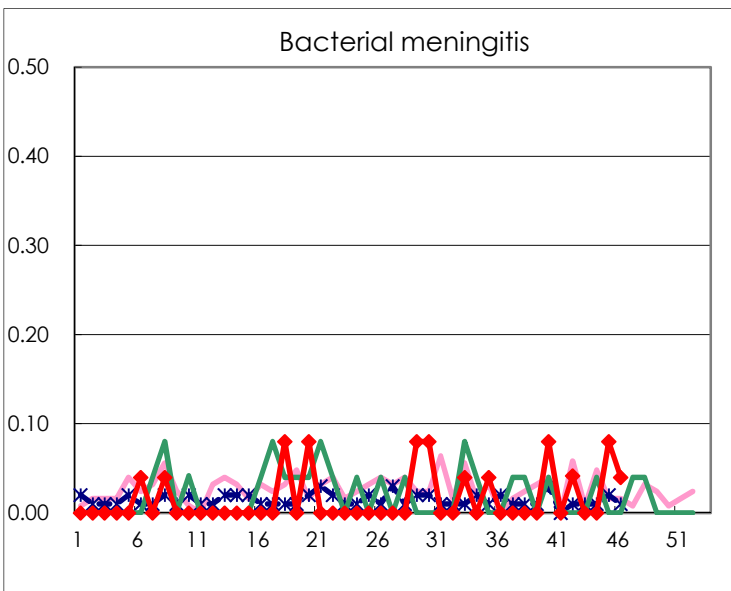
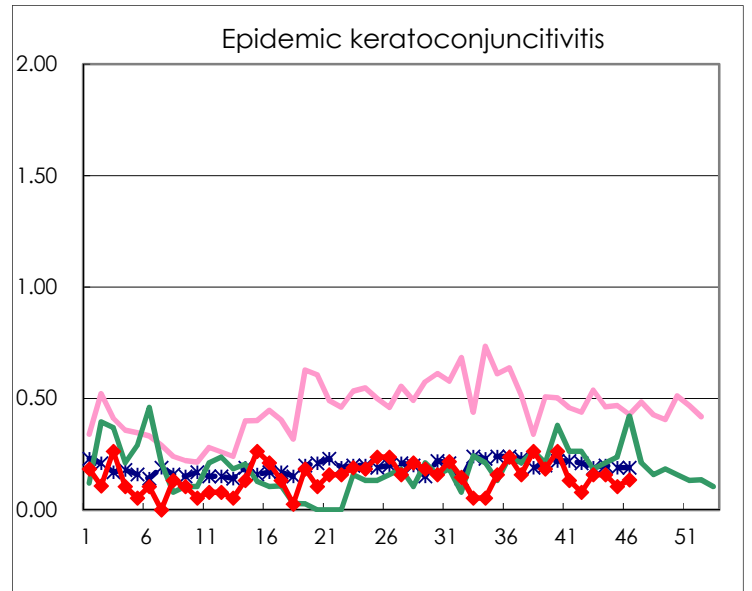
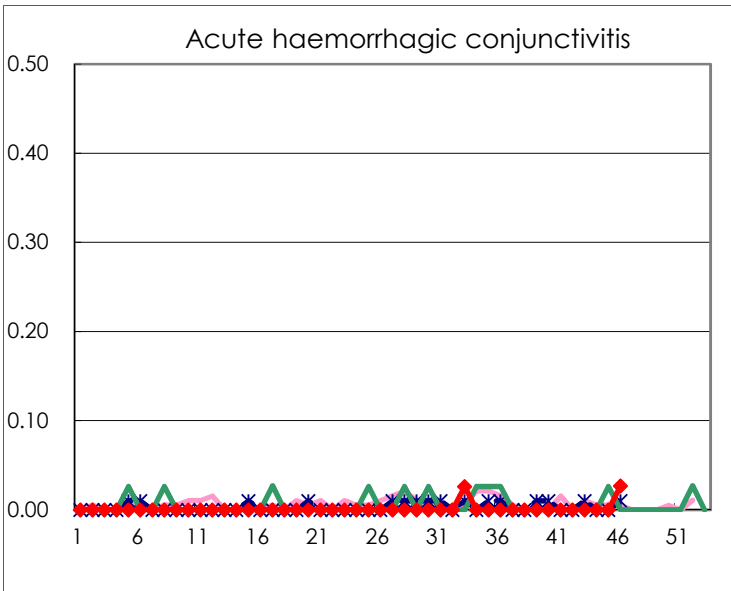
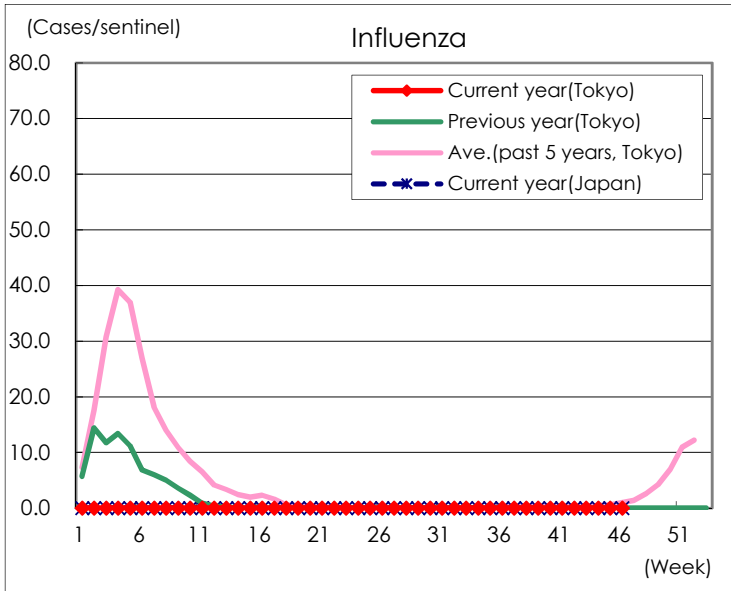
Diseases	Tokyo				
	43rd	44th	45th	46th	/sentinel
Respiratory syncytial virus infection	14	13	21	5	0.02
Pharyngoconjunctival fever	25	31	31	38	0.15
Group A streptococcal pharyngitis	84	63	78	88	0.34
Infectious gastroenteritis	821	751	974	1,209	4.63
Chickenpox	22	33	17	24	0.09
Hand, foot, and mouth disease	90	123	181	275	1.05
Erythema infectiosum	4	7	6	11	0.04
Exanthem subitum	106	103	98	85	0.33
Herpangina	250	179	136	136	0.52
Mumps	8	12	18	16	0.06
Kawasaki disease	2		1	1	0.00
Cold with exanthems	11	8	9	14	0.05
Influenza				1	0.00
Acute hemorrhagic conjunctivitis				1	0.03
Epidemic keratoconjunctivitis	6	6	4	5	0.14
Bacterial meningitis			2	1	0.04
Aseptic meningitis		1			
<i>Mycoplasma pneumoniae</i>		1			
<i>Chlamydia pneumoniae</i> (excluding psittacosis)					
Infectious gastroenteritis (only by Rotavirus)					
Influenza-Associated Hospitalizations					

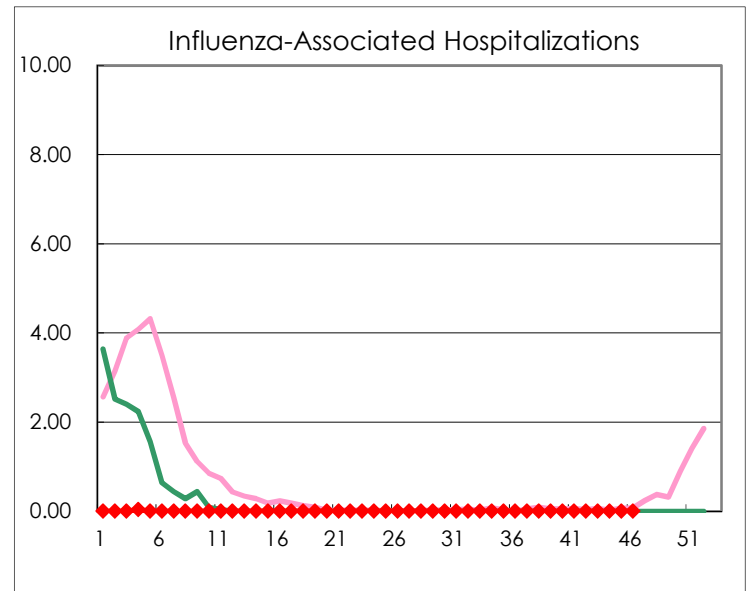
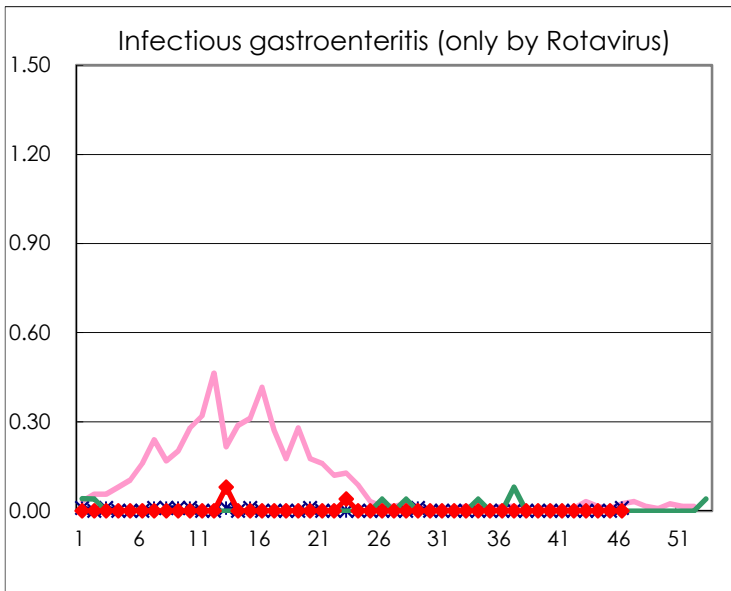
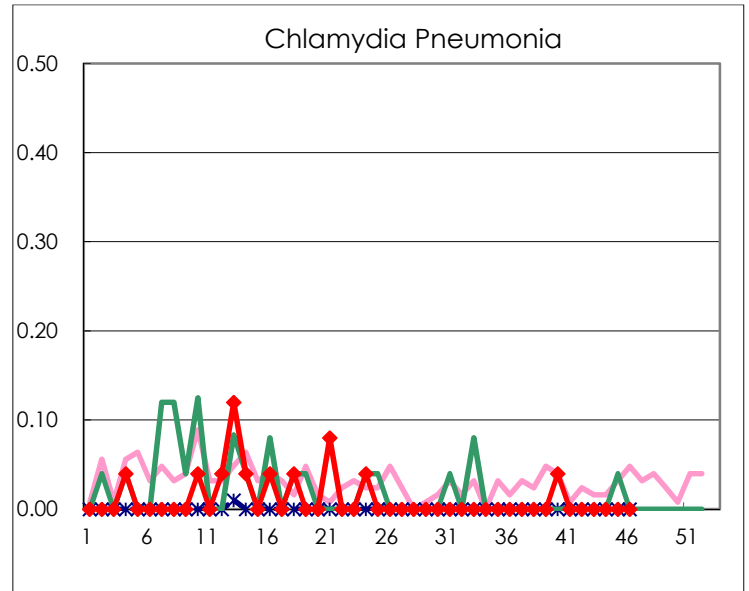
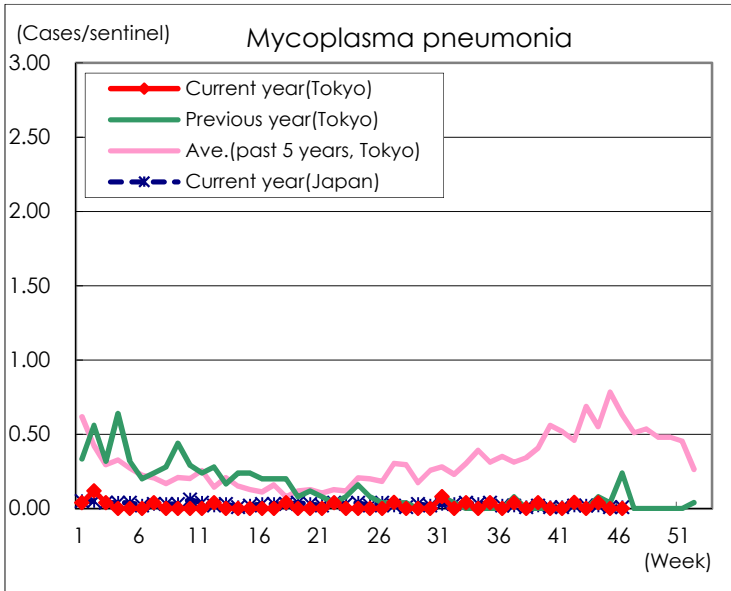
(Blank means 0.)

Disease Trend Graph (weekly reported cases per sentinel in comparison)









Number of sentinel facilities for weekly reporting		
Types of sentinels	Number of sentinels	Sentinels having reported
Pediatric	264	261
Influenza	419	410
Ophthalmic	39	37
Specially-designated	25	25