
INFECTIOUS DISEASES WEEKLY REPORT

TOKYO IDWR

Tokyo Metropolitan Infectious Disease Surveillance Center

9 December 2021 / Number 48 (11/29 ~ 12/5)

Surveillance System in Tokyo, Japan

The infectious diseases which all physicians must report
All physicians must report to health centers the incidence of the diseases which are shown at page one. Health centers electronically report the individual cases to Tokyo Metropolitan Infectious Disease Surveillance Center.

The infectious diseases required to be reported by the sentinels
The numbers of patients who visit the sentinel clinics or hospitals during a week are reported to health centers in Tokyo. And they electronically report the numbers to Tokyo Metropolitan Infectious Disease Surveillance Center. We have about 500 sentinel clinics and hospitals in Tokyo.

Tokyo Metropolitan Institute of Public Health

TEL:81-3-3363-3213 FAX:81-3-5332-7365

e-mail:www@tokyo-eiken.go.jp

URL:idsc.tokyo-eiken.go.jp/

Number of patients with the diseases which all physicians must report

Category	Diseases	Tokyo					Japan	
		45th	46th	47th	48th	Cum 2021	48th	Cum 2021
I	Ebola hemorrhagic fever							
	Crimean-Congo hemorrhagic fever							
	Smallpox							
	South American hemorrhagic fever							
	Plague							
	Marburg disease							
	Lassa fever							
II	Acute poliomyelitis							
	Tuberculosis	49	41	28	37	2,039	256	14,536
	Diphtheria							
	Severe Acute Respiratory Syndrome(SARS)							
	Middle East Respiratory Syndrome (MERS)							
	Avian influenza H5N1							
	Avian influenza H7N9							
III	Cholera							
	Shigellosis					2		7
	Enterohemorrhagic Escherichia coli infection	5	3	4	2	307	29	2,978
	Typhoid fever					1		3
	Paratyphoid fever							
IV	Hepatitis E	1	2	3	2	101	7	400
	West Nile fever							
	Hepatitis A				1	13	1	65
	Echinococcosis					1		23
	Yellow fever							
	Psittacosis							8
	Omsk hemorrhagic fever							
	Relapsing fever							8
	Kyasanur forest disease							
	Q fever					1		1
	Rabies							
	Coccidioidomycosis							
	Monkeypox							
	Zika virus infection							
	Severe Fever with Thrombocytopenia Syndrome							109
	Hemorrhagic fever with renal syndrome							
	Western equine encephalitis							
	Tick-borne encephalitis							
	Anthrax							
	Chikungunya fever							
	Scrub typhus(Tsutsugamushi disease)	1		2	2	7	50	375
	Dengue fever						1	7
	Eastern equine encephalitis							
	Avian influenza (excluding H5N1 and H7N9)							
	Nipah virus infection							
	Japanese spotted fever	1				4	2	477
	Japanese encephalitis							3
	Hantavirus pulmonary syndrome							
	Herpes B virus infection							
	Glanders							
	Brucellosis							1
	Venezuelan equine encephalitis							
	Hendra virus infection							
Epidemic typhus								
Botulism					1		5	
Malaria	1				10		26	
Tularemia								
Lyme disease							21	
Lyssavirus infection(excluding rabies)								
Rift valley fever								
Melioidosis								
Legionellosis	6	6	1	2	146	35	1,991	
Leptospirosis					3		27	
Rocky mountain spotted fever								

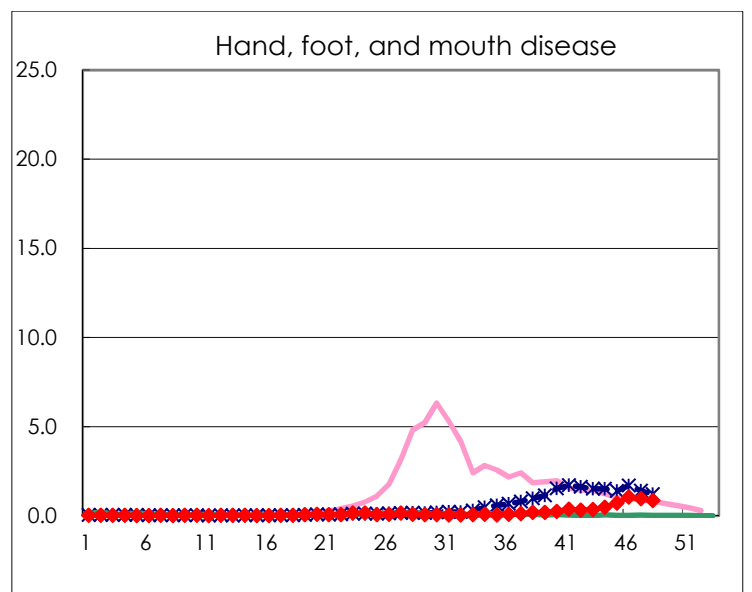
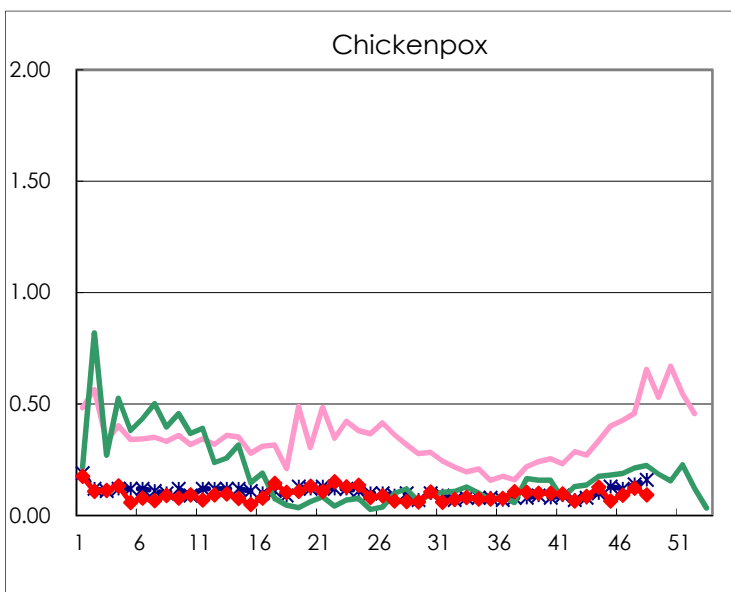
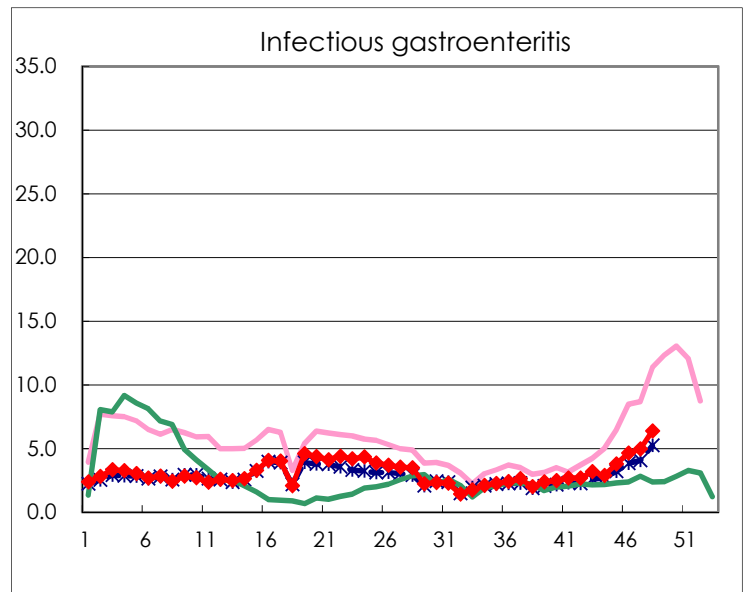
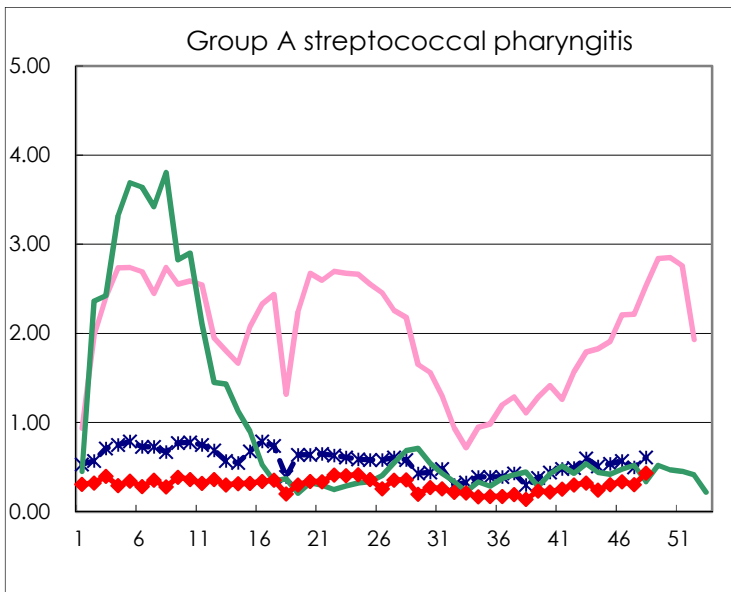
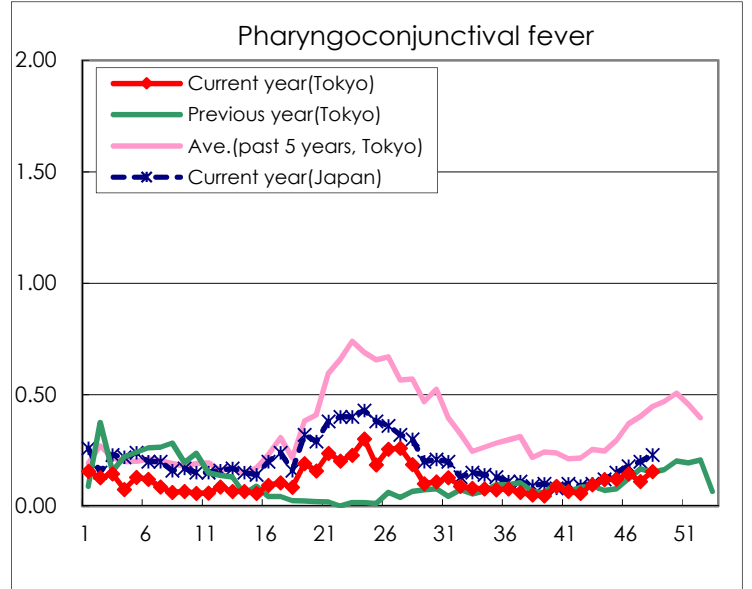
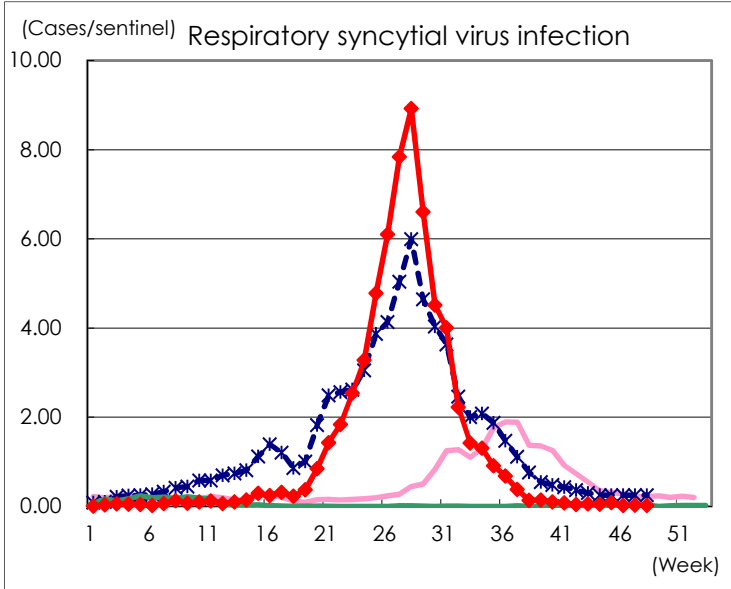
Category	Diseases	Tokyo					Japan	
		45th	46th	47th	48th	Cum 2021	48th	Cum 2021
V	Amebiasis	2	4		2	91	14	491
	Viral hepatitis(excluding hepatitis A and E)				2	45	4	179
	CRE infection	8	2	4	8	190	29	1,869
	Acute Flaccid Paralysis (excluding Acute poliomyelitis)					2	1	22
	Acute encephalitis(excluding JE and WNE)				3	22	6	309
	Cryptosporidiosis							5
	Creutzfeldt-Jakob disease					11	2	167
	Severe invasive streptococcal infections(TSLS)	3		4	3	75	14	589
	Acquired immunodeficiency syndrome (AIDS)	7	8	1	3	336	11	958
	Giardiasis		1			10		34
	Invasive <i>Haemophilus influenzae</i> disease	1				18	3	179
	Invasive meningococcal disease							2
	Invasive pneumococcal disease	2		2	1	115	26	1,268
	Varicella (limited to hospitalized case)	1		1	2	30	9	268
	Congenital rubella syndrome							1
	Syphilis	69	51	42	54	2,233	121	7,134
	Disseminated cryptococcosis					14	4	142
	Tetanus			1		3	1	89
	Vancomycin-resistant <i>S. aureus</i> infection							
	Vancomycin-resistant <i>Enterococcus</i> infection					11	2	116
	Pertussis	1	1	4	5	59	25	639
Rubella					2	1	12	
Measles							5	
MDRA infection					1		4	

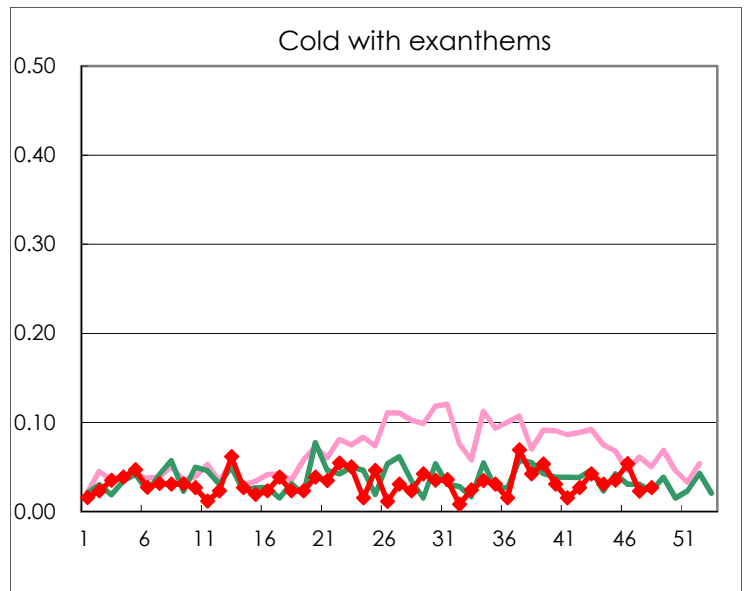
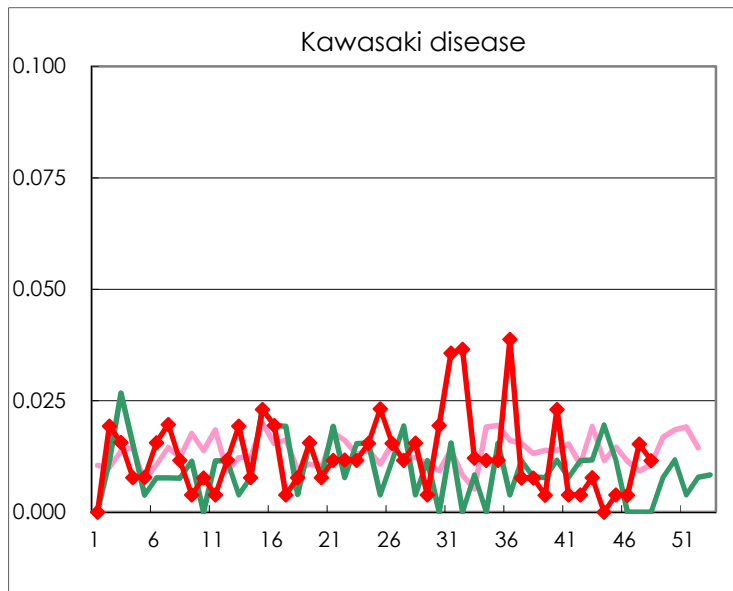
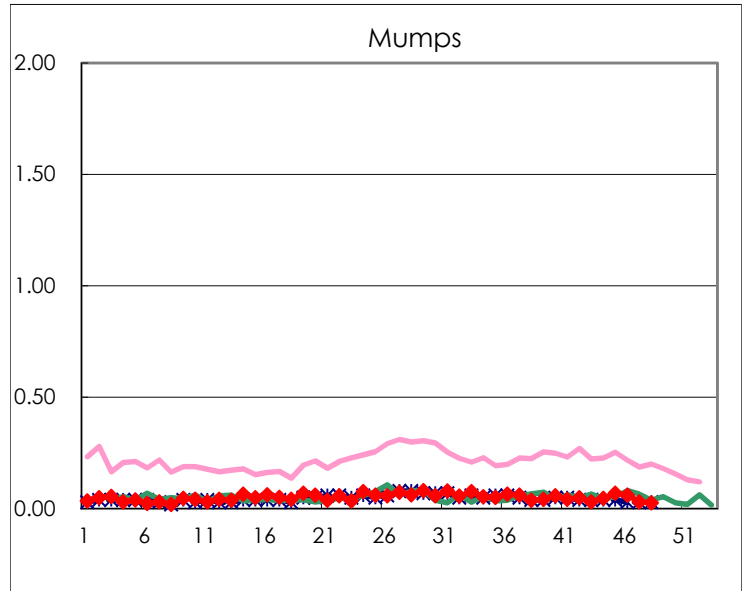
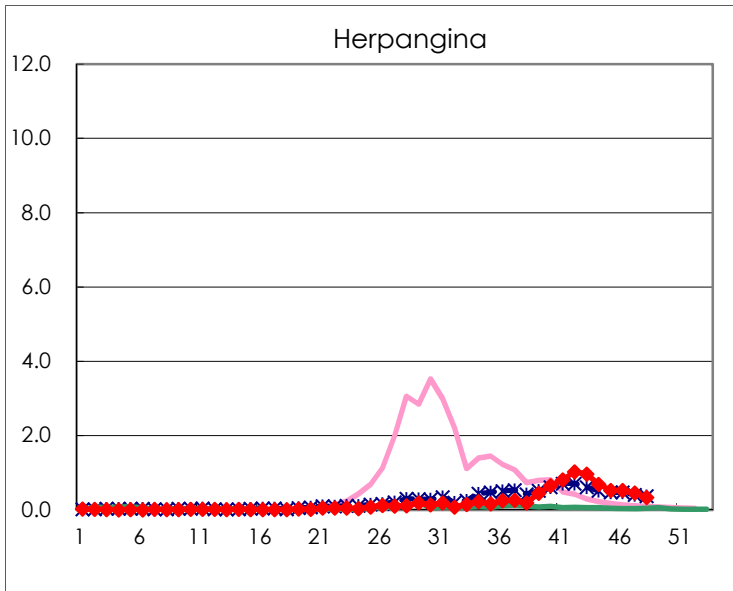
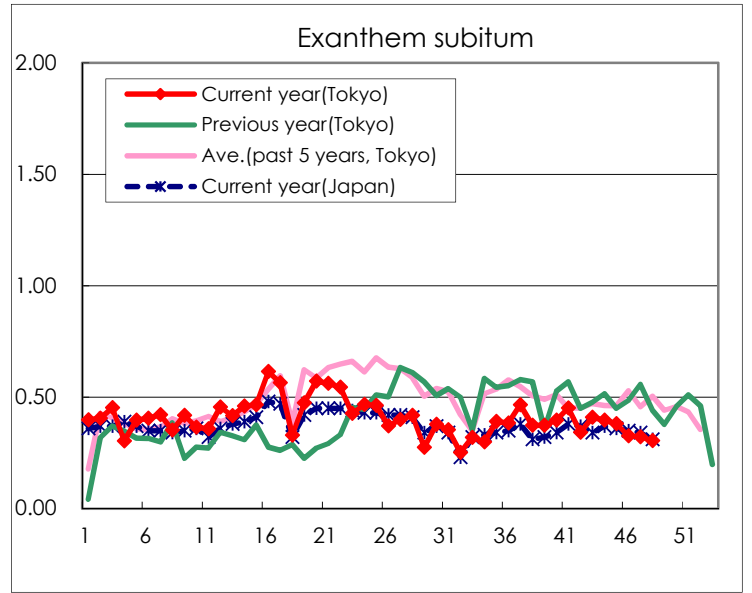
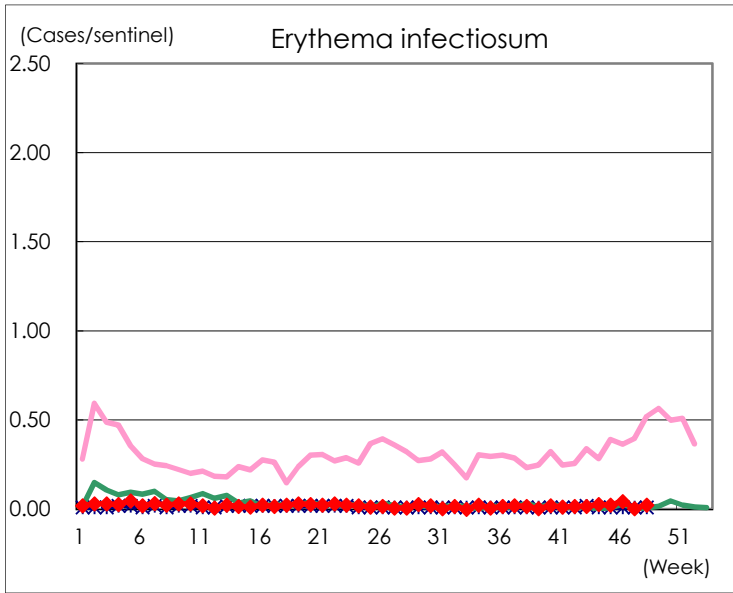
Number of patients with the diseases to be reported
by the designated clinics and hospitals

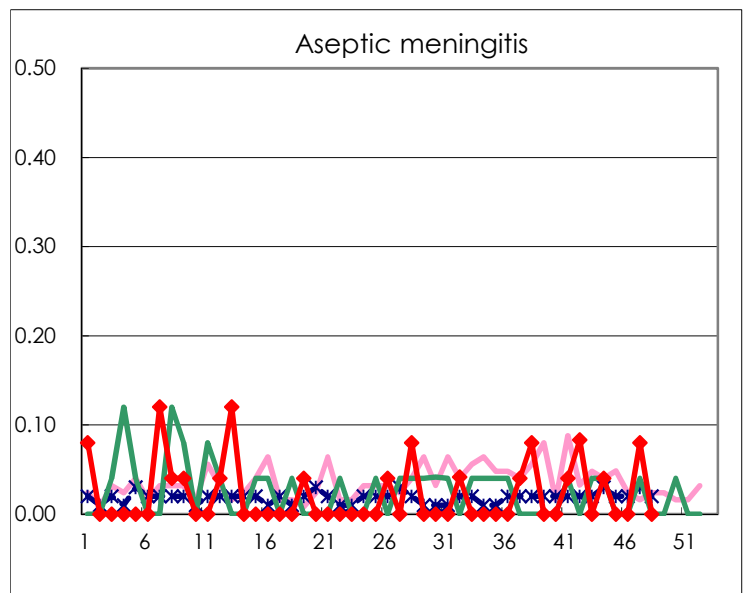
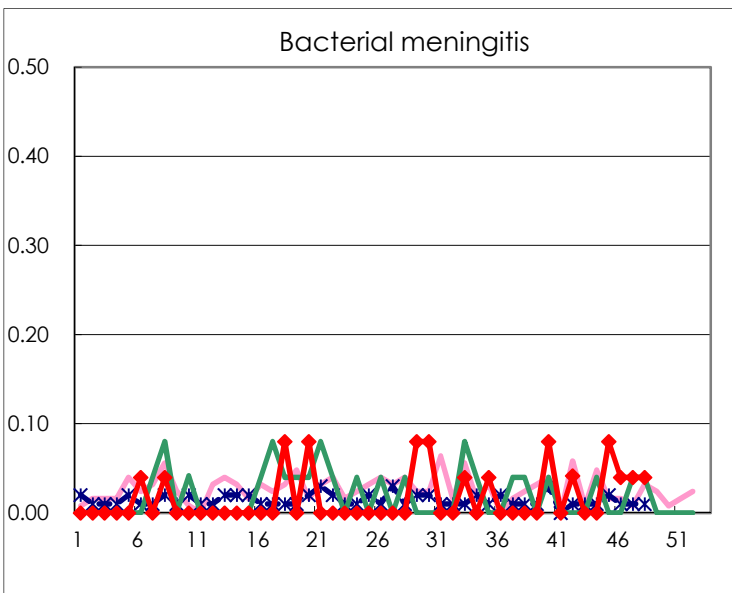
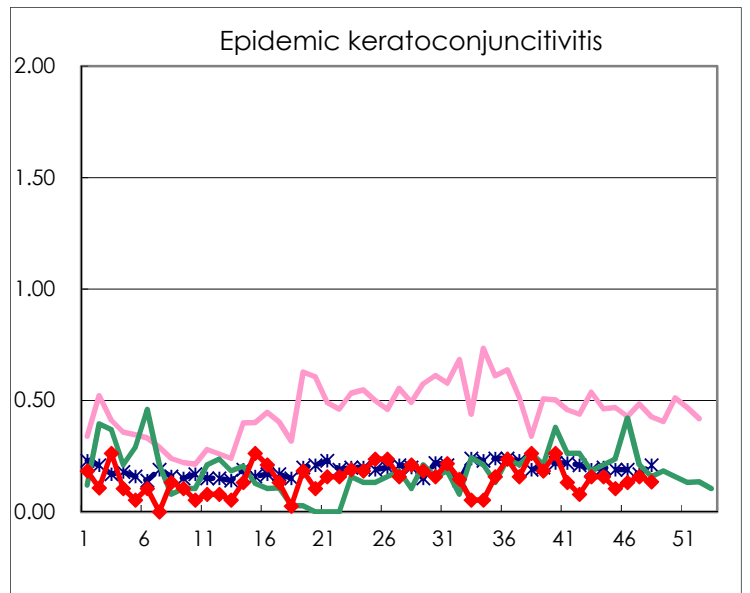
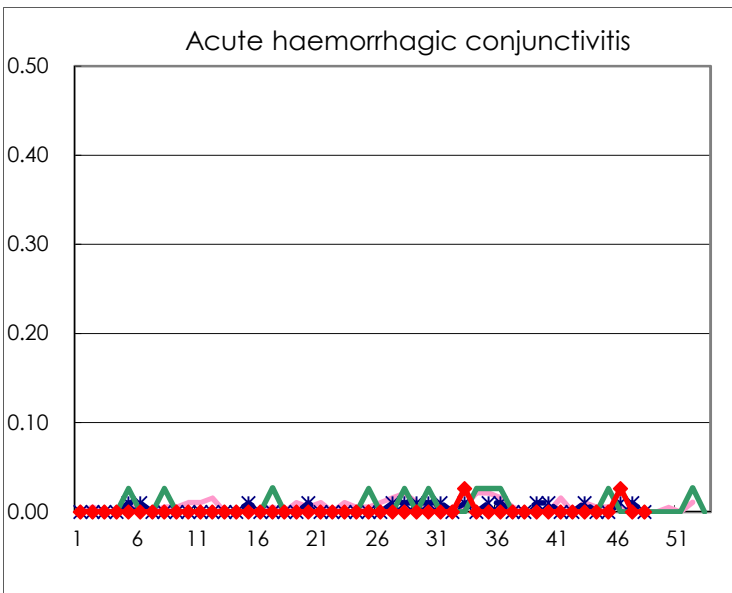
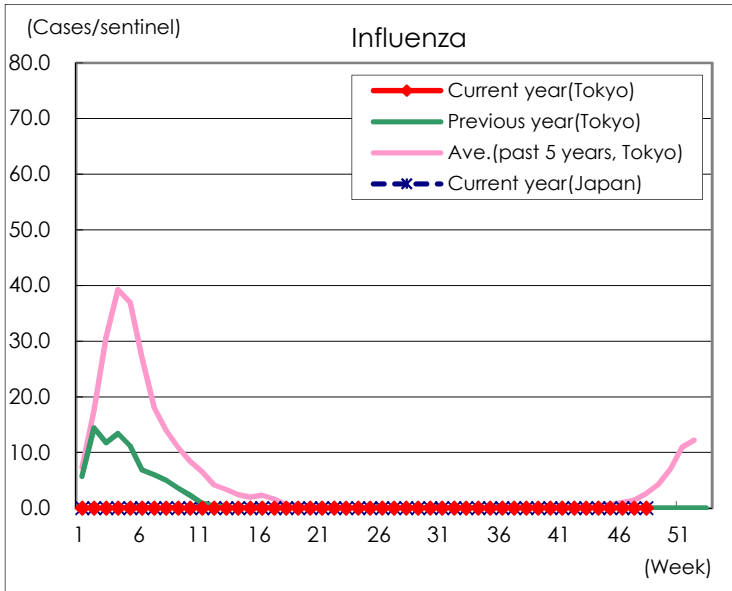
Diseases	Tokyo				
	45th	46th	47th	48th	/sentinel
Respiratory syncytial virus infection	21	5	6	5	0.02
Pharyngoconjunctival fever	31	38	29	40	0.15
Group A streptococcal pharyngitis	78	88	80	112	0.43
Infectious gastroenteritis	974	1,209	1,293	1,652	6.38
Chickenpox	17	24	32	24	0.09
Hand, foot, and mouth disease	181	275	249	222	0.86
Erythema infectiosum	6	11	1	6	0.02
Exanthem subitum	98	85	84	79	0.31
Herpangina	136	136	118	87	0.34
Mumps	18	16	8	7	0.03
Kawasaki disease	1	1	4	3	0.01
Cold with exanthems	9	14	6	7	0.03
Influenza		1			
Acute hemorrhagic conjunctivitis		1			
Epidemic keratoconjunctivitis	4	5	6	5	0.14
Bacterial meningitis	2	1	1	1	0.04
Aseptic meningitis			2		
<i>Mycoplasma pneumoniae</i>				1	0.04
Chlamydial pneumonia (excluding psittacosis)			1	1	0.04
Infectious gastroenteritis (only by Rotavirus)					
Influenza-Associated Hospitalizations					

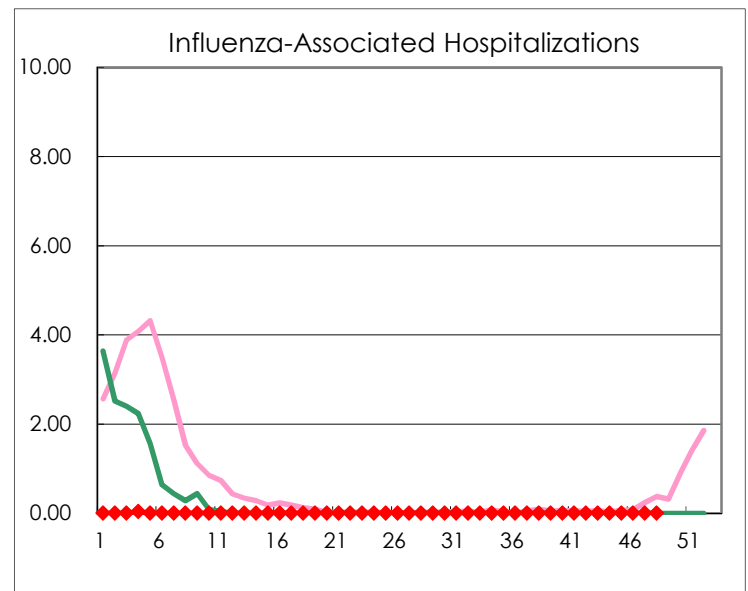
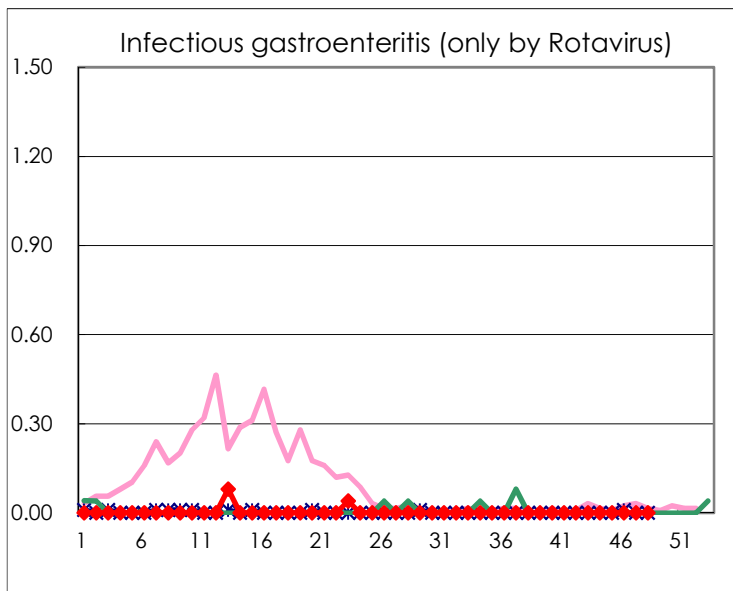
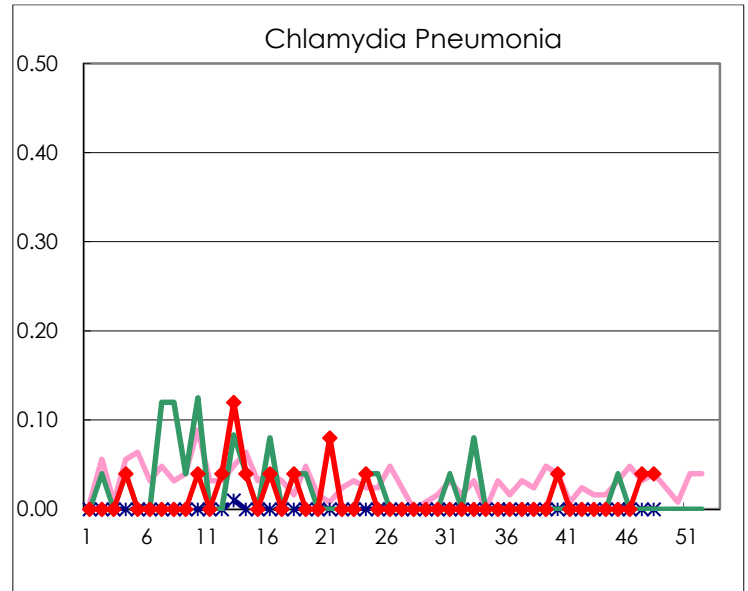
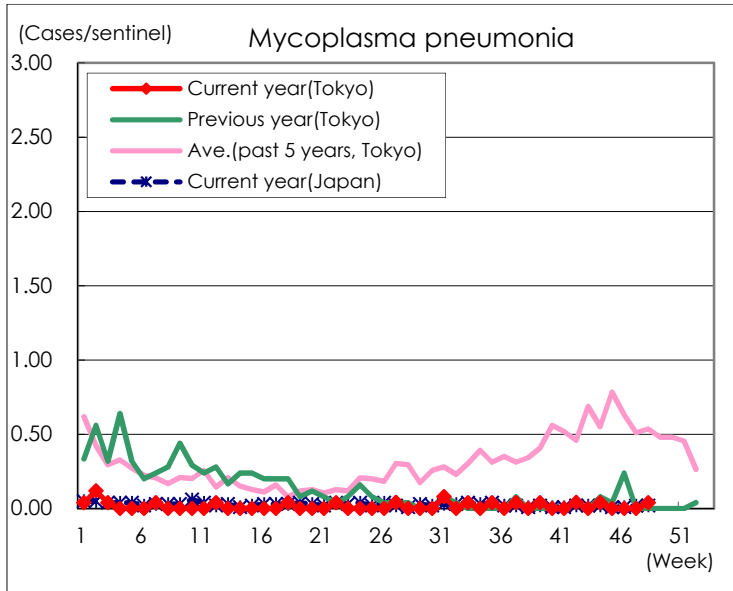
(Blank means 0.)

Disease Trend Graph (weekly reported cases per sentinel in comparison)









Number of sentinel facilities for weekly reporting		
Types of sentinels	Number of sentinels	Sentinels having reported
Pediatric	264	259
Influenza	419	409
Ophthalmic	39	37
Specially-designated	25	25