
INFECTIOUS DISEASES WEEKLY REPORT

TOKYO IDWR

Tokyo Metropolitan Infectious Disease Surveillance Center

9 June 2022 / Number 22
(5/30 ~ 6/5)

Surveillance System in Tokyo, Japan

The infectious diseases which all physicians must report
All physicians must report to health centers the incidence of the diseases which are shown at page one. Health centers electronically report the individual cases to Tokyo Metropolitan Infectious Disease Surveillance Center.

The infectious diseases required to be reported by the sentinels
The numbers of patients who visit the sentinel clinics or hospitals during a week are reported to health centers in Tokyo. And they electronically report the numbers to Tokyo Metropolitan Infectious Disease Surveillance Center. We have about 500 sentinel clinics and hospitals in Tokyo.

Tokyo Metropolitan Institute of Public Health

TEL:81-3-3363-3213 FAX:81-3-5332-7365

e-mail:tmiph@section.metro.tokyo.jp

URL:idsc.tmiph.metro.tokyo.lg.jp/

Number of patients with the diseases which all physicians must report

Category	Diseases	Tokyo					Japan	
		19th	20th	21st	22nd	Cum 2022	22nd	Cum 2022
I	Ebola hemorrhagic fever							
	Crimean-Congo hemorrhagic fever							
	Smallpox							
	South American hemorrhagic fever							
	Plague							
	Marburg disease							
	Lassa fever							
II	Acute poliomyelitis							
	Tuberculosis	56	43	36	42	836	234	5,973
	Diphtheria							
	Severe Acute Respiratory Syndrome(SARS)							
	Middle East Respiratory Syndrome (MERS)							
	Avian influenza H5N1							
	Avian influenza H7N9							
III	Cholera							
	Shigellosis						1	12
	Enterohemorrhagic Escherichia coli infection	4	9	13	11	73	61	595
	Typhoid fever					1		7
	Paratyphoid fever							1
IV	Hepatitis E	1	2	6	2	64	7	192
	West Nile fever							
	Hepatitis A					1	4	33
	Echinococcosis			1		3		11
	Yellow fever							
	Psittacosis					1		4
	Omsk hemorrhagic fever							
	Relapsing fever							5
	Kyasanur forest disease							
	Q fever							
	Rabies							
	Coccidioidomycosis							
	Monkeypox							
	Zika virus infection							
	Severe Fever with Thrombocytopenia Syndrome						5	46
	Hemorrhagic fever with renal syndrome							
	Western equine encephalitis							
	Tick-borne encephalitis							
	Anthrax							
	Chikungunya fever							
	Scrub typhus(Tsutsugamushi disease)					2	4	79
	Dengue fever	1	1			3	1	13
	Eastern equine encephalitis							
	Avian influenza (excluding H5N1 and H7N9)							
	Nipah virus infection							
	Japanese spotted fever						9	76
	Japanese encephalitis							1
	Hantavirus pulmonary syndrome							
	Herpes B virus infection							
	Glanders							
	Brucellosis							
	Venezuelan equine encephalitis							
	Hendra virus infection							
	Epidemic typhus							
Botulism					1		1	
Malaria							5	
Tularemia								
Lyme disease							2	
Lyssavirus infection(excluding rabies)								
Rift valley fever								
Melioidosis							1	
Legionellosis	4	4	7	3	42	41	609	
Leptospirosis				1	1	1	2	
Rocky mountain spotted fever								

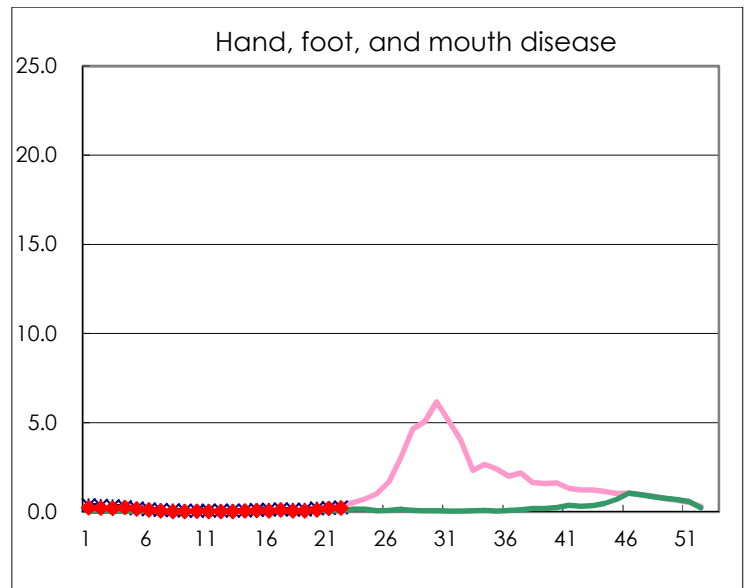
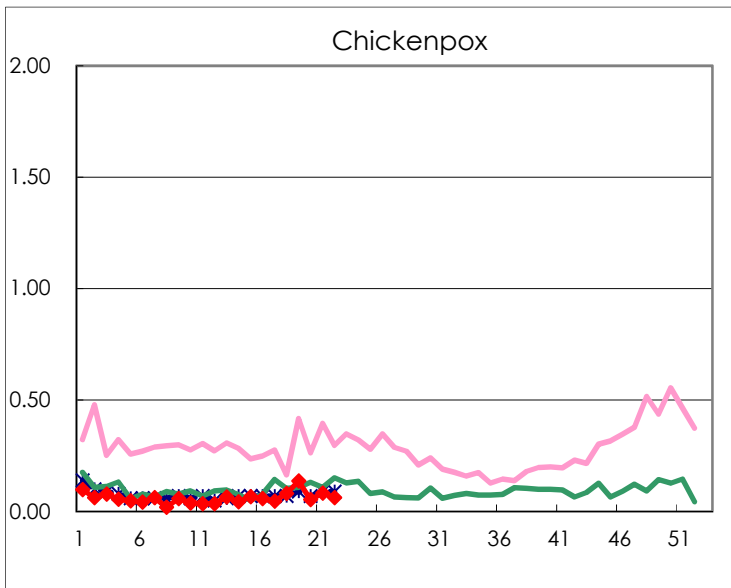
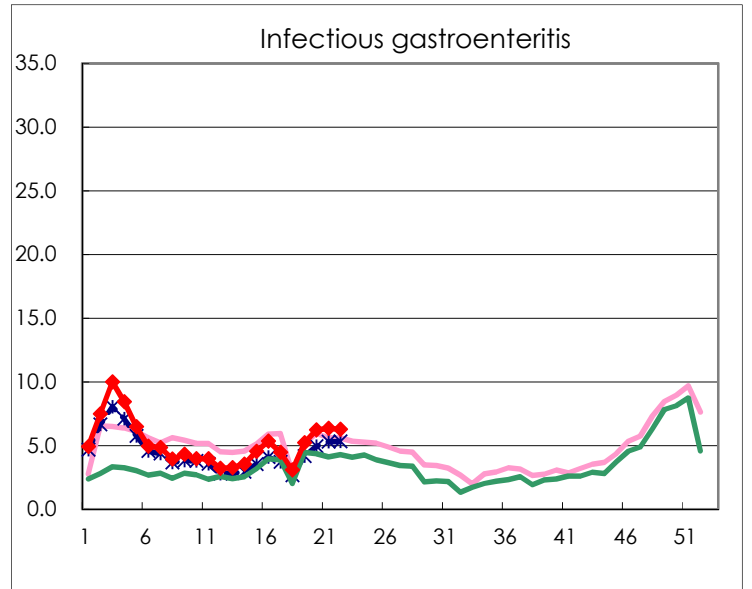
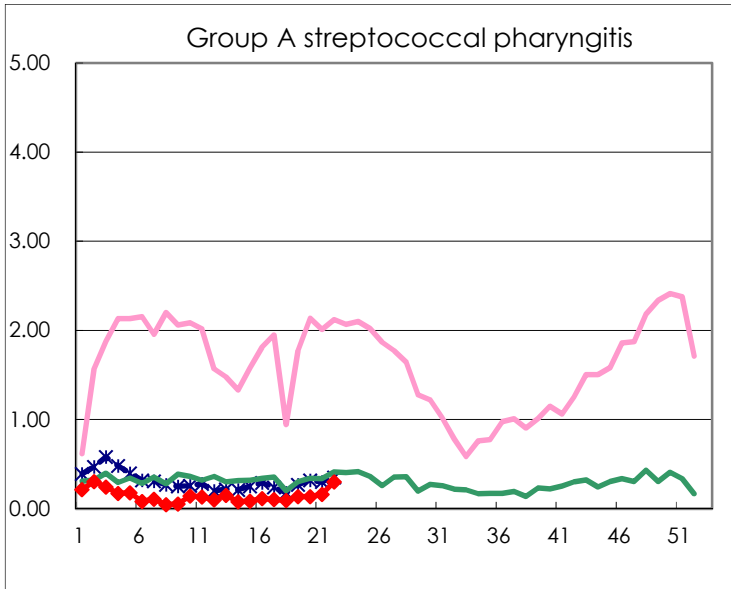
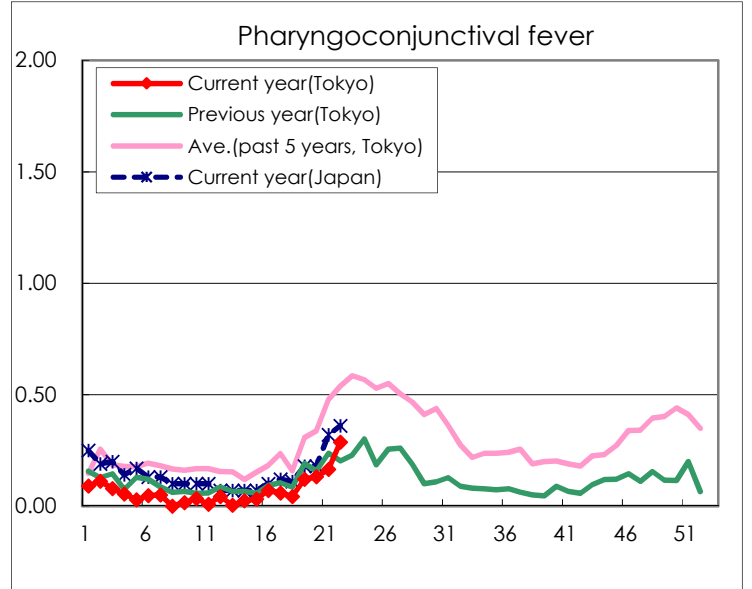
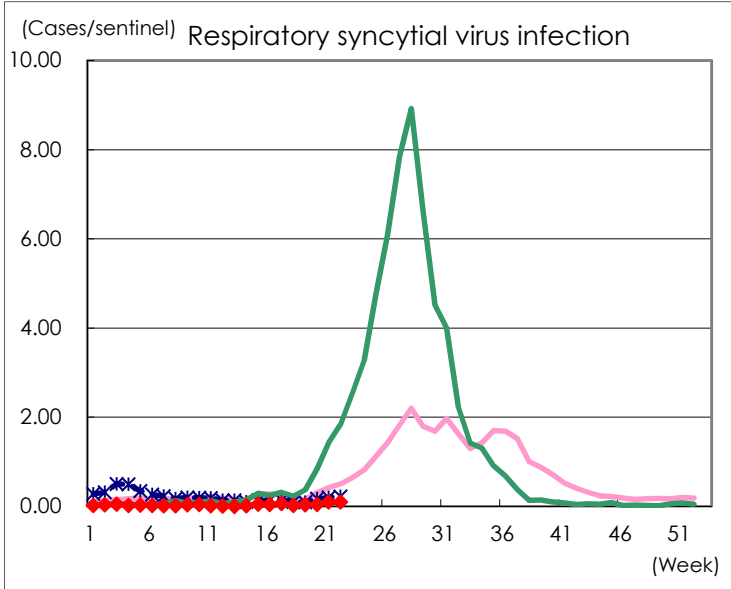
Category	Diseases	Tokyo					Japan	
		19th	20th	21st	22nd	Cum 2022	22nd	Cum 2022
V	Amebiasis	4	2	3	1	60	9	209
	Viral hepatitis(excluding hepatitis A and E)	1	1	1		16	1	81
	CRE infection	4	2	4	2	77	32	632
	Acute Flaccid Paralysis (excluding Acute poliomyelitis)							9
	Acute encephalitis(excluding JE and WNE)	1	1	1		6	7	115
	Cryptosporidiosis	1				1		3
	Creutzfeldt-Jakob disease	1		1		10	2	75
	Severe invasive streptococcal infections(TSLS)	2		3	2	55	10	319
	Acquired immunodeficiency syndrome (AIDS)	6	6	3	3	112	8	358
	Giardiasis	1			1	5		14
	Invasive <i>Haemophilus influenzae</i> disease				1	6	2	79
	Invasive meningococcal disease							4
	Invasive pneumococcal disease	6	2	3	2	63	27	545
	Varicella (limited to hospitalized case)	1		1	1	19	3	136
	Congenital rubella syndrome							
	Syphilis	66	81	64	56	1,325	159	4,471
	Disseminated cryptococcosis	1				7	2	63
	Tetanus			1		1	2	29
	Vancomycin-resistant <i>S. aureus</i> infection							
	Vancomycin-resistant <i>Enterococcus</i> infection			1		3	2	65
	Pertussis	1	1	3		18	5	237
	Rubella							2
Measles							1	
MDRA infection			1		1		2	

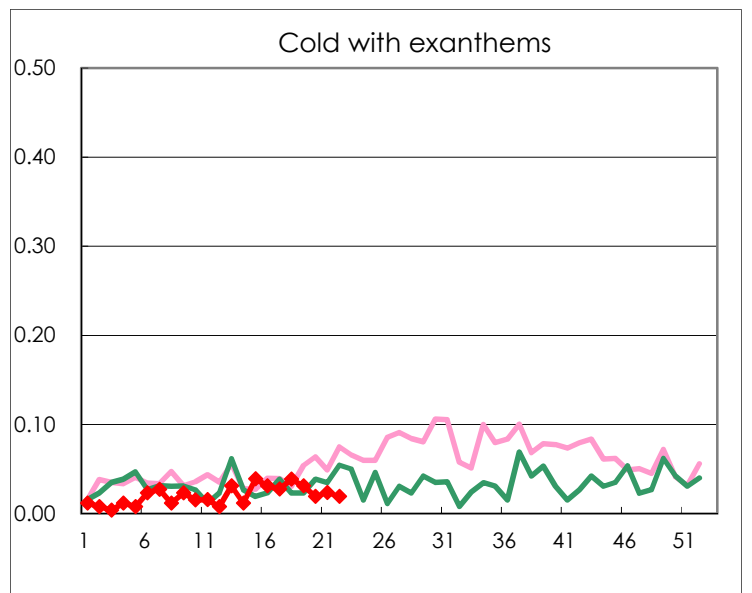
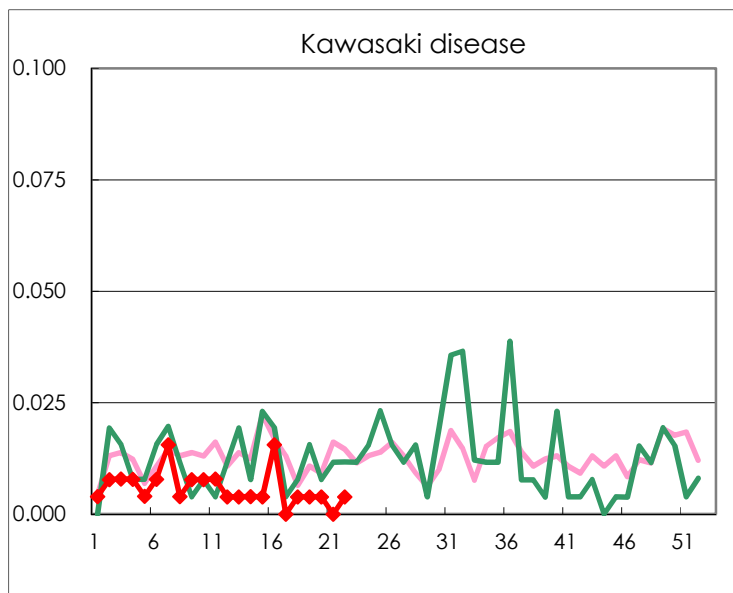
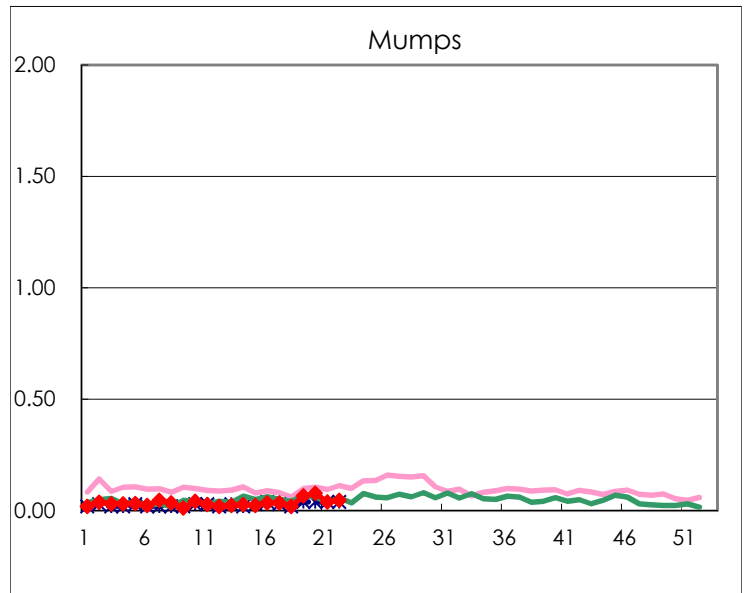
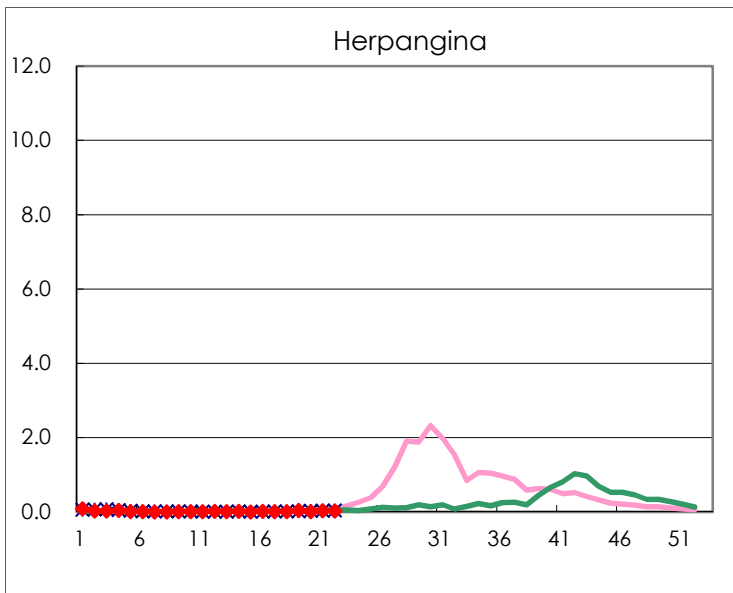
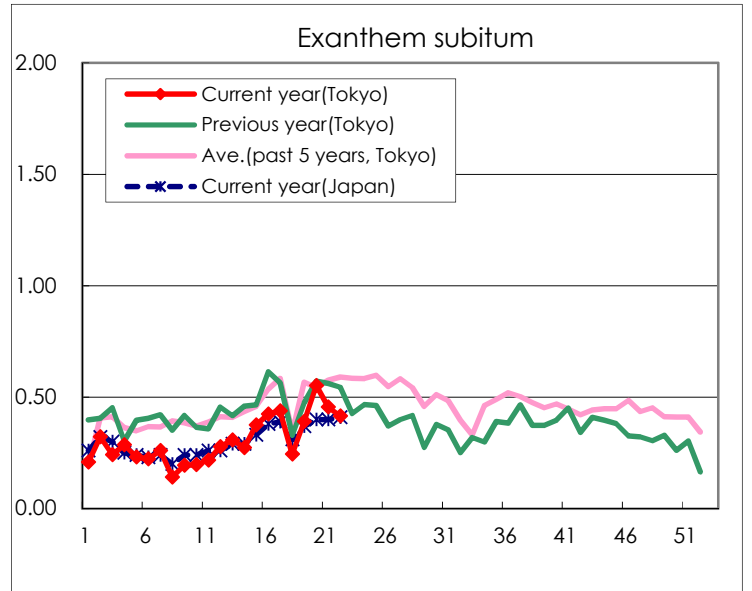
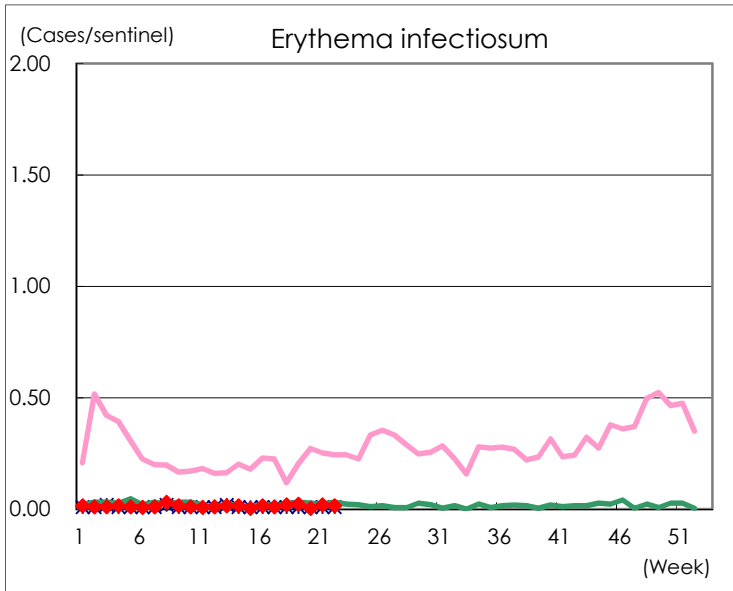
Number of patients with the diseases to be reported
by the designated clinics and hospitals

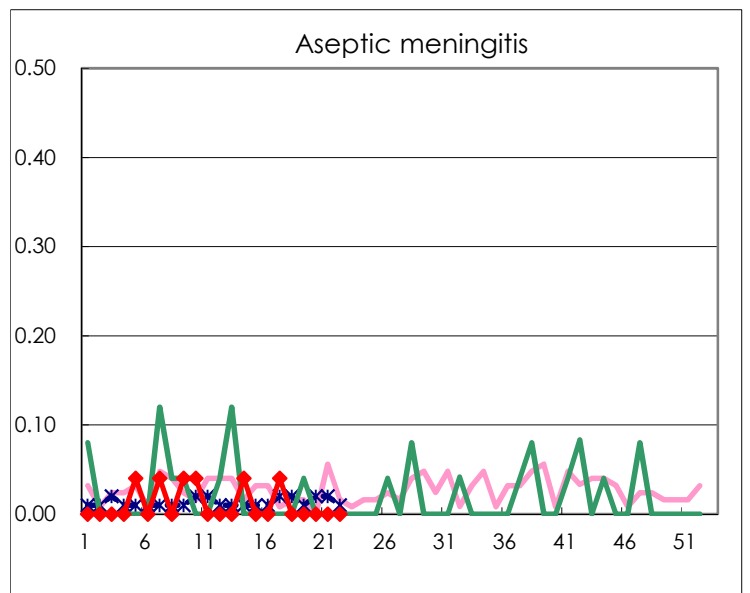
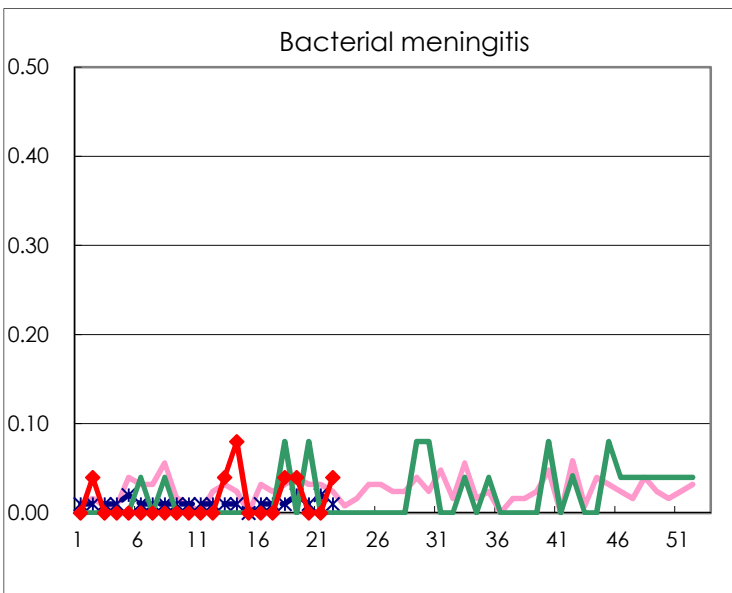
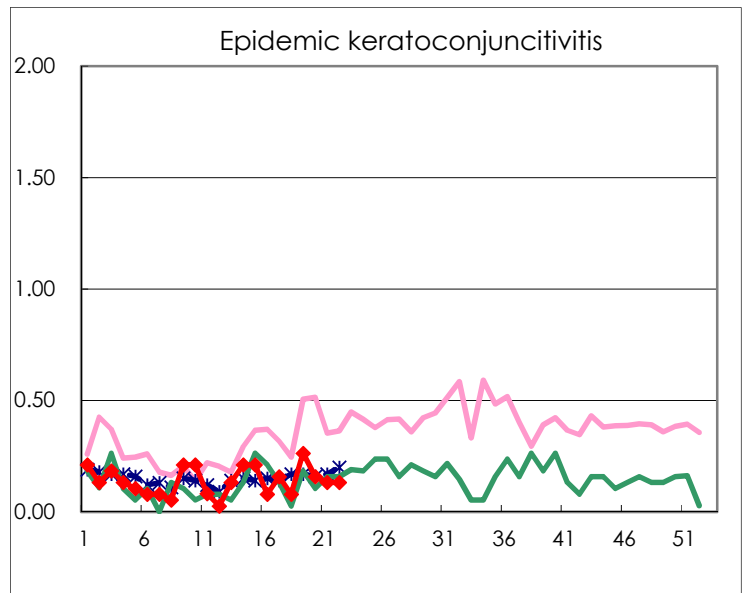
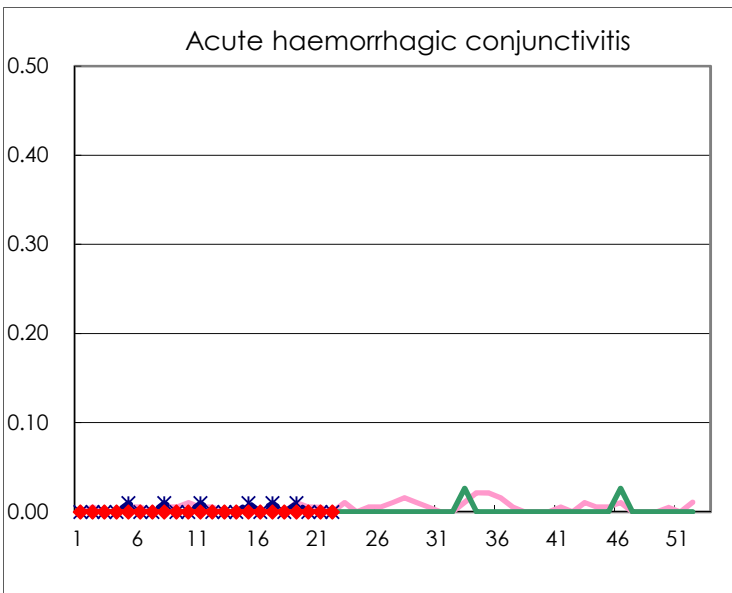
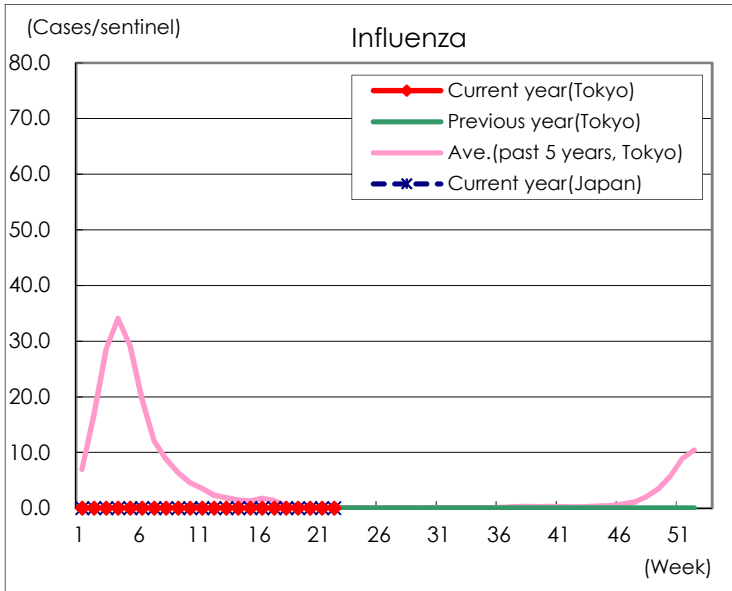
Diseases	Tokyo				
	19th	20th	21st	22nd	/sentinel
Respiratory syncytial virus infection	9	11	24	25	0.10
Pharyngoconjunctival fever	31	34	42	74	0.29
Group A streptococcal pharyngitis	35	35	41	78	0.30
Infectious gastroenteritis	1,337	1,599	1,617	1,620	6.28
Chickenpox	35	14	21	16	0.06
Hand, foot, and mouth disease	13	23	50	51	0.20
Erythema infectiosum	6	1	5	4	0.02
Exanthem subitum	100	142	116	107	0.41
Herpangina	10	2	8	6	0.02
Mumps	17	20	10	12	0.05
Kawasaki disease	1	1		1	0.00
Cold with exanthems	8	5	6	5	0.02
Influenza	3	1			
Acute hemorrhagic conjunctivitis					
Epidemic keratoconjunctivitis	10	6	5	5	0.13
Bacterial meningitis	1			1	0.04
Aseptic meningitis					
<i>Mycoplasma pneumoniae</i>					
Chlamydial pneumonia (excluding psittacosis)	2	1		1	0.04
Infectious gastroenteritis (only by Rotavirus)	1				
Influenza-Associated Hospitalizations					

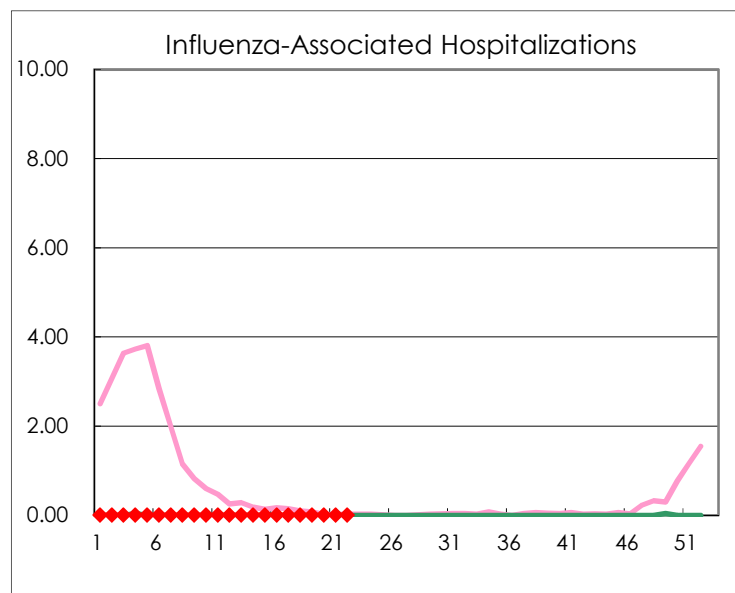
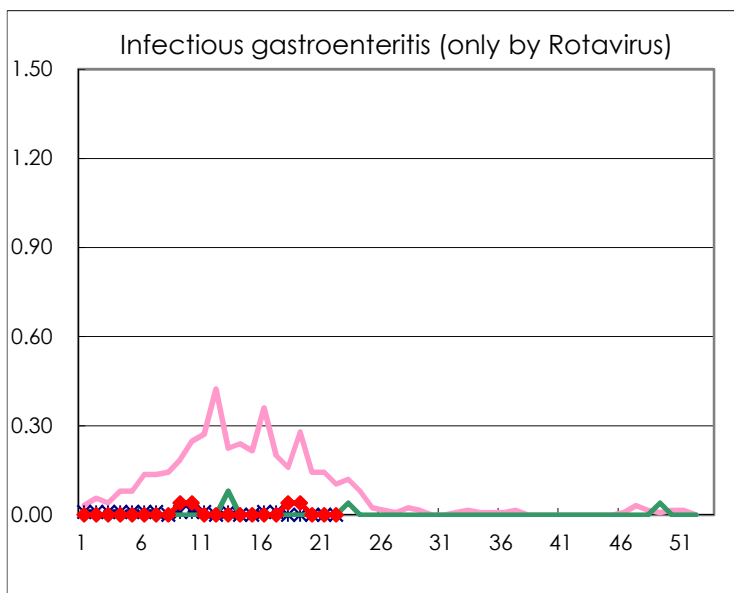
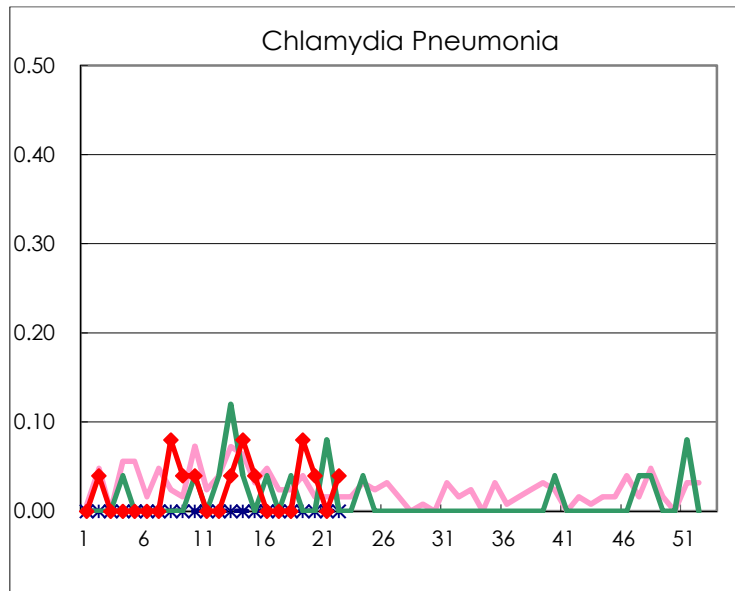
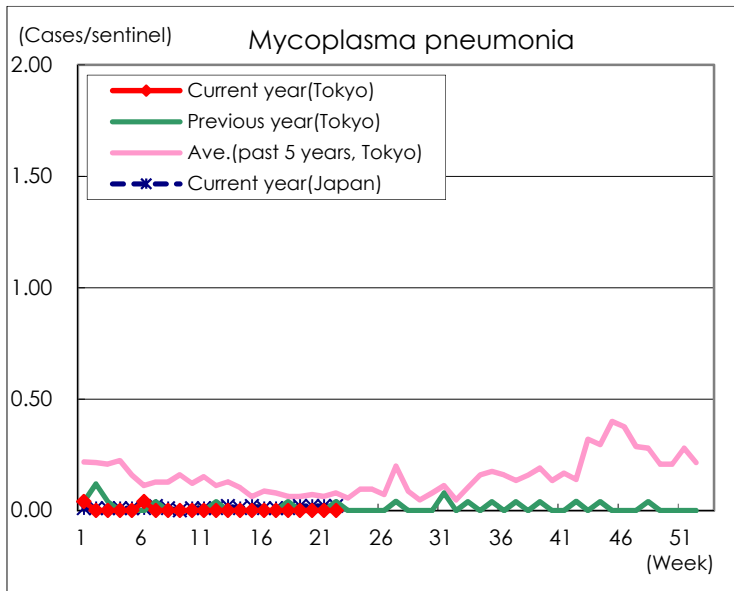
(Blank means 0.)

Disease Trend Graph (weekly reported cases per sentinel in comparison)









Number of sentinel facilities for weekly reporting		
Types of sentinels	Number of sentinels	Sentinels having reported
Pediatric	264	258
Influenza	419	411
Ophthalmic	39	38
Specially-designated	25	25