
INFECTIOUS DISEASES WEEKLY REPORT

TOKYO IDWR

Tokyo Metropolitan Infectious Disease Surveillance Center

21 July 2022 / Number 28
(7/11 ~ 7/17)

Surveillance System in Tokyo, Japan

The infectious diseases which all physicians must report
All physicians must report to health centers the incidence of the diseases which are shown at page one. Health centers electronically report the individual cases to Tokyo Metropolitan Infectious Disease Surveillance Center.

The infectious diseases required to be reported by the sentinels
The numbers of patients who visit the sentinel clinics or hospitals during a week are reported to health centers in Tokyo. And they electronically report the numbers to Tokyo Metropolitan Infectious Disease Surveillance Center. We have about 500 sentinel clinics and hospitals in Tokyo.

Tokyo Metropolitan Institute of Public Health

TEL:81-3-3363-3213 FAX:81-3-5332-7365

e-mail:tmiph@section.metro.tokyo.jp

URL:idsc.tmiph.metro.tokyo.lg.jp/

Number of patients with the diseases which all physicians must report

Category	Diseases	Tokyo					Japan	
		25th	26th	27th	28th	Cum 2022	28th	Cum 2022
I	Ebola hemorrhagic fever							
	Crimean-Congo hemorrhagic fever							
	Smallpox							
	South American hemorrhagic fever							
	Plague							
	Marburg disease							
	Lassa fever							
II	Acute poliomyelitis							
	Tuberculosis	51	30	36	35	1,094	201	7,845
	Diphtheria							
	Severe Acute Respiratory Syndrome(SARS)							
	Middle East Respiratory Syndrome (MERS)							
	Avian influenza H5N1							
	Avian influenza H7N9							
III	Cholera				1	1		1
	Shigellosis			1		1		13
	Enterohemorrhagic Escherichia coli infection	7	12	8	8	133	110	1,154
	Typhoid fever		1		1	4	1	10
	Paratyphoid fever					1	2	5
IV	Hepatitis E	2	3		1	75	4	236
	West Nile fever							
	Hepatitis A				1	4	1	45
	Echinococcosis					3		14
	Yellow fever							
	Psittacosis					1	1	5
	Omsk hemorrhagic fever							
	Relapsing fever							7
	Kyasanur forest disease							
	Q fever							
	Rabies							
	Coccidioidomycosis							
	Monkeypox							
	Zika virus infection							
	Severe Fever with Thrombocytopenia Syndrome						3	73
	Hemorrhagic fever with renal syndrome							
	Western equine encephalitis							
	Tick-borne encephalitis							
	Anthrax							
	Chikungunya fever		1			1		4
	Scrub typhus(Tsutsugamushi disease)					3		95
	Dengue fever			1		4		19
	Eastern equine encephalitis							
	Avian influenza (excluding H5N1 and H7N9)							
	Nipah virus infection							
	Japanese spotted fever						10	152
	Japanese encephalitis							1
	Hantavirus pulmonary syndrome							
	Herpes B virus infection							
	Glanders							
	Brucellosis							
	Venezuelan equine encephalitis							
	Hendra virus infection							
	Epidemic typhus							
Botulism					1		1	
Malaria	1				2		10	
Tularemia								
Lyme disease							3	
Lyssavirus infection(excluding rabies)								
Rift valley fever								
Melioidosis							1	
Legionellosis		1	1	2	54	33	958	
Leptospirosis					1		3	
Rocky mountain spotted fever								

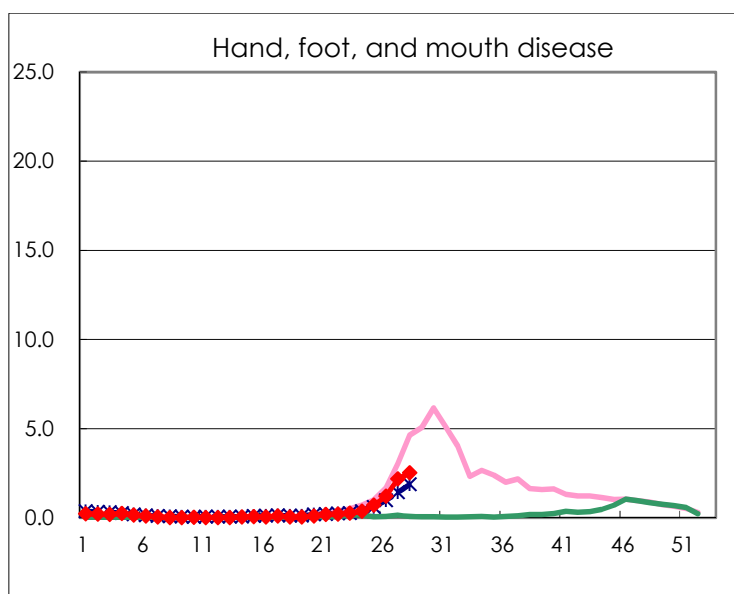
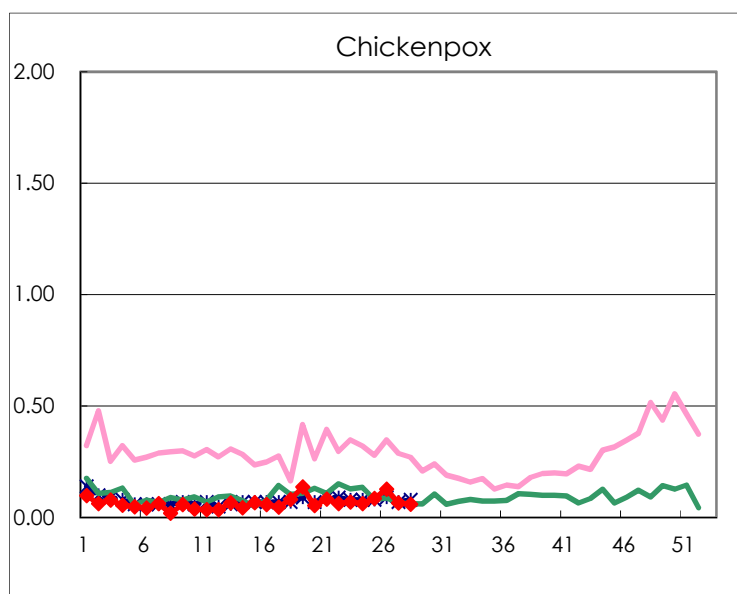
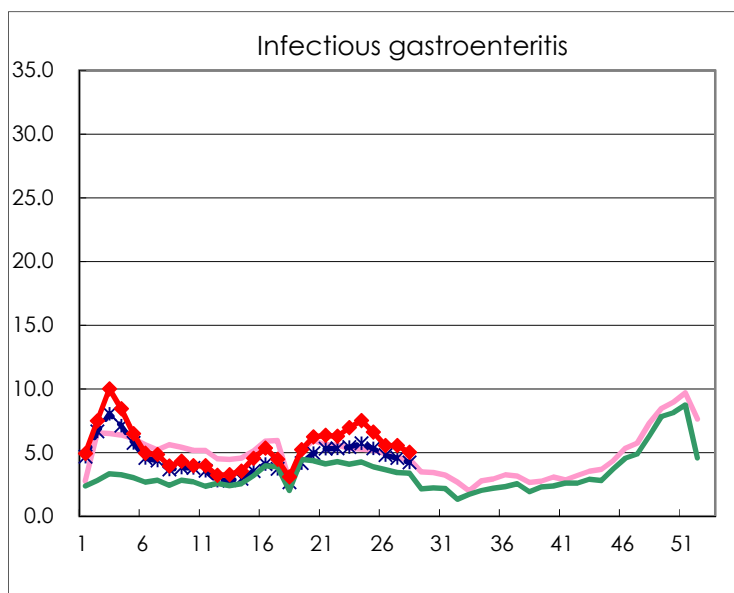
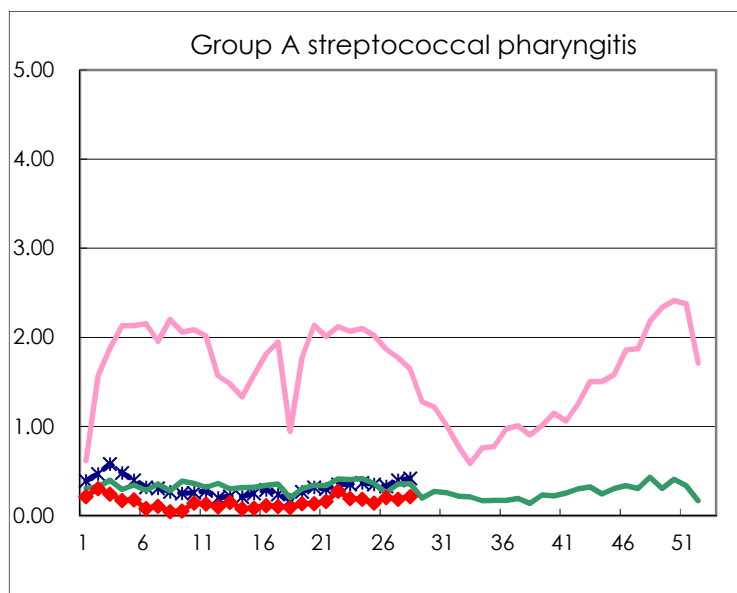
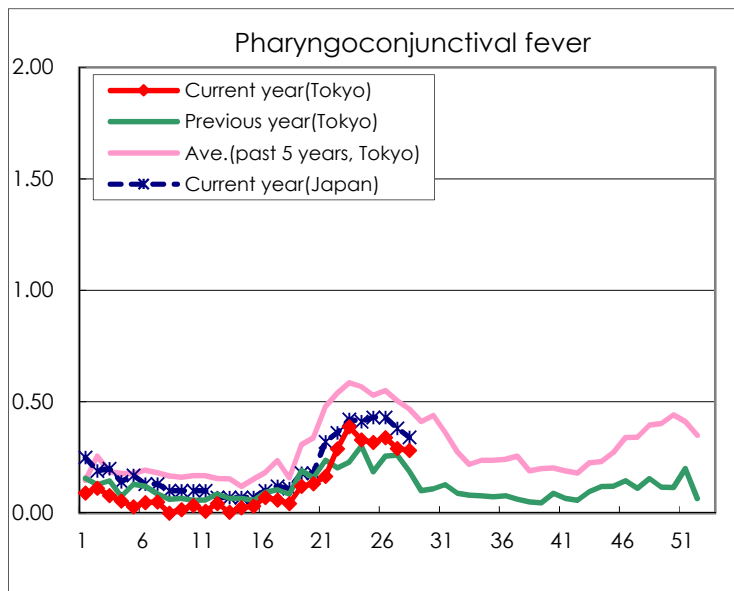
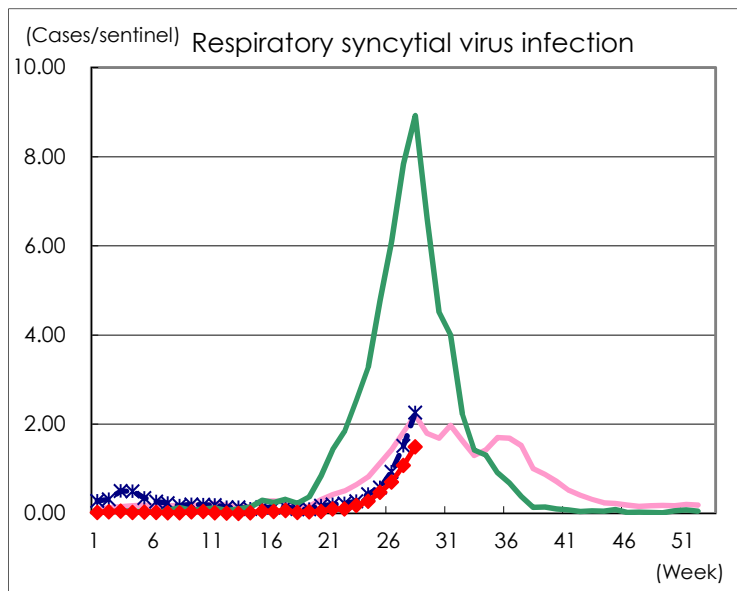
Category	Diseases	Tokyo					Japan	
		25th	26th	27th	28th	Cum 2022	28th	Cum 2022
V	Amebiasis	3	2	1	3	72	6	274
	Viral hepatitis(excluding hepatitis A and E)				1	21		112
	CRE infection	3	4	4	3	109	19	866
	Acute Flaccid Paralysis (excluding Acute poliomyelitis)							12
	Acute encephalitis(excluding JE and WNE)		1			9	3	158
	Cryptosporidiosis			1		2		6
	Creutzfeldt-Jakob disease		1			11	1	95
	Severe invasive streptococcal infections(TSLS)	2	1	3	1	69	10	400
	Acquired immunodeficiency syndrome (AIDS)	8	3	7	7	155	9	479
	Giardiasis		4			10		20
	Invasive <i>Haemophilus influenzae</i> disease	1			1	8	1	94
	Invasive meningococcal disease							4
	Invasive pneumococcal disease	2		3	4	79	7	680
	Varicella (limited to hospitalized case)	2		3		30	4	176
	Congenital rubella syndrome							
	Syphilis	74	85	86	57	1,816	141	6,106
	Disseminated cryptococcosis			1		8	1	78
	Tetanus	1				2	3	47
	Vancomycin-resistant <i>S. aureus</i> infection							
	Vancomycin-resistant <i>Enterococcus</i> infection					3	1	83
	Pertussis	1		1		22	3	279
Rubella	1				1		4	
Measles							1	
MDRA infection					1		4	

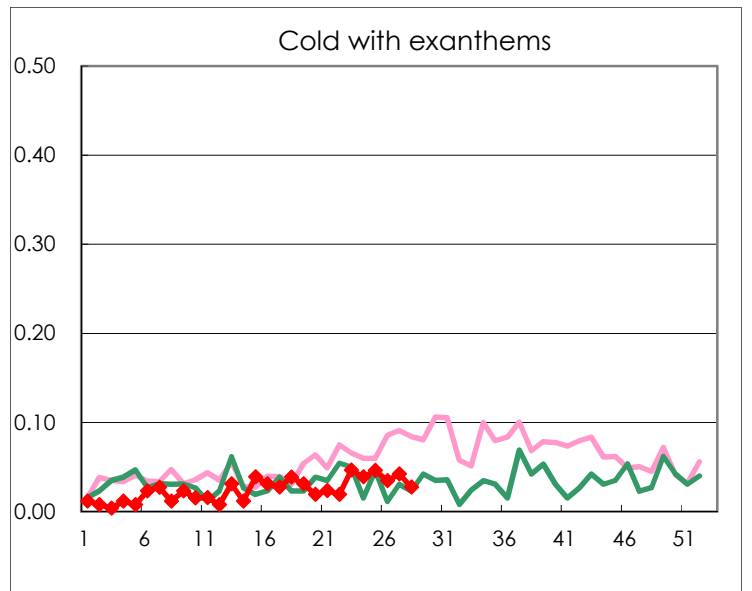
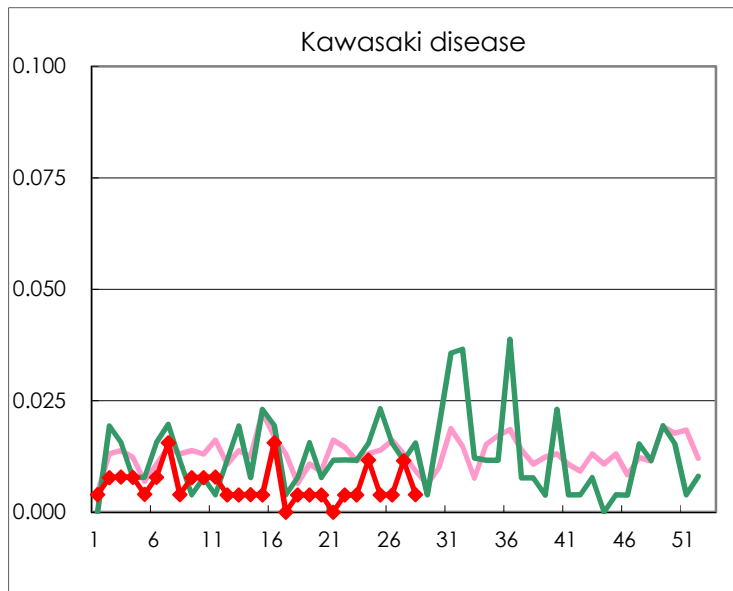
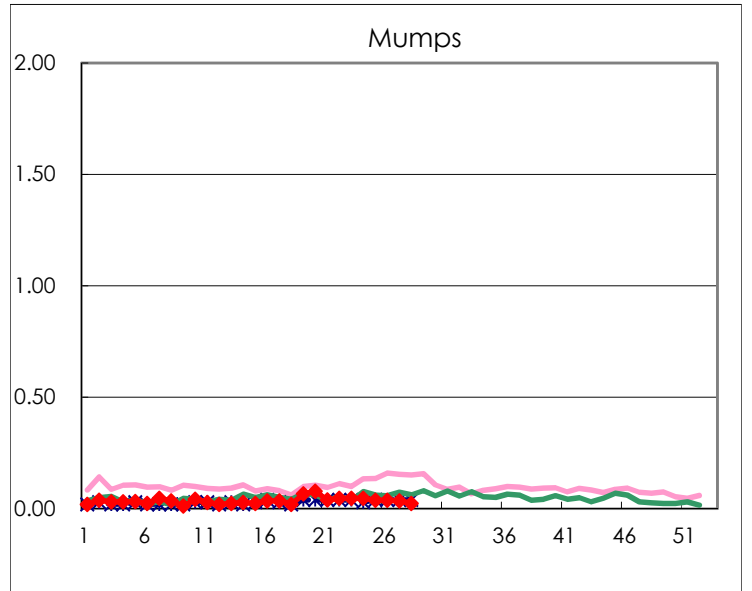
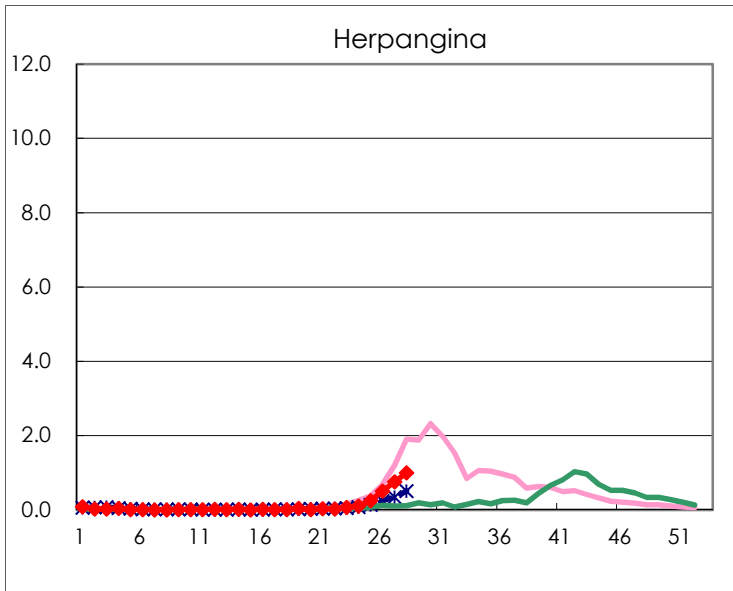
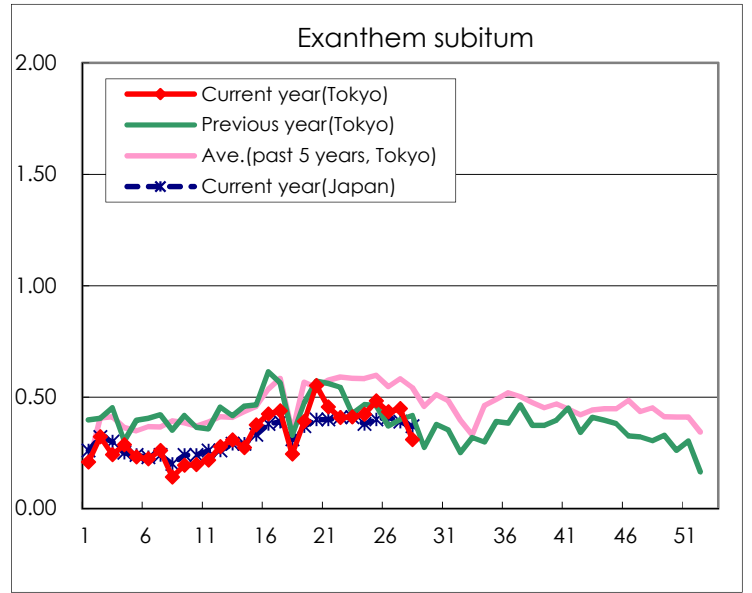
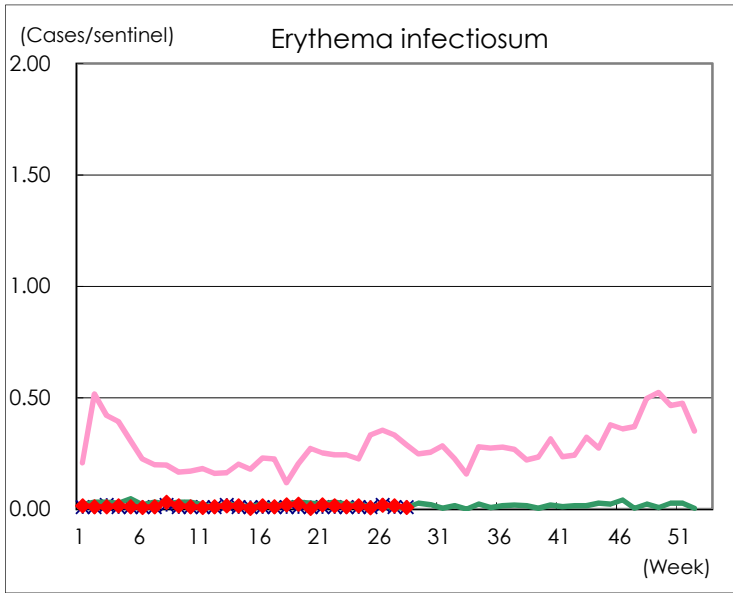
Number of patients with the diseases to be reported
by the designated clinics and hospitals

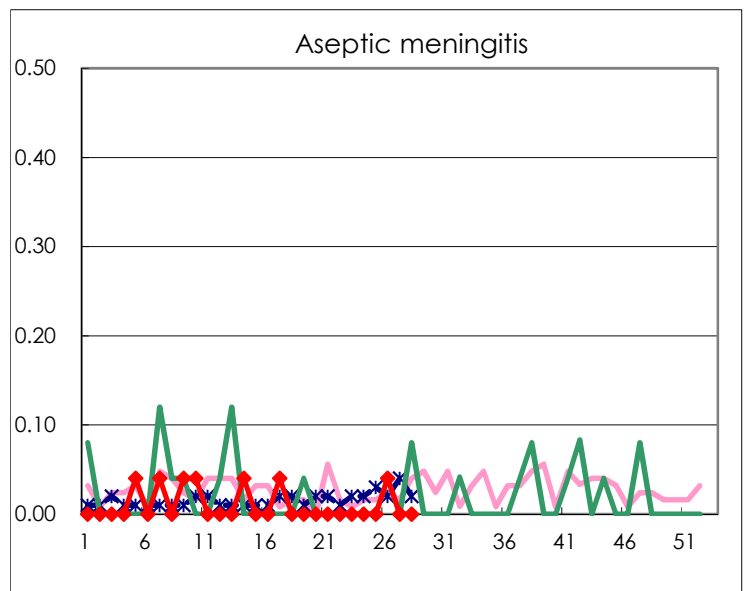
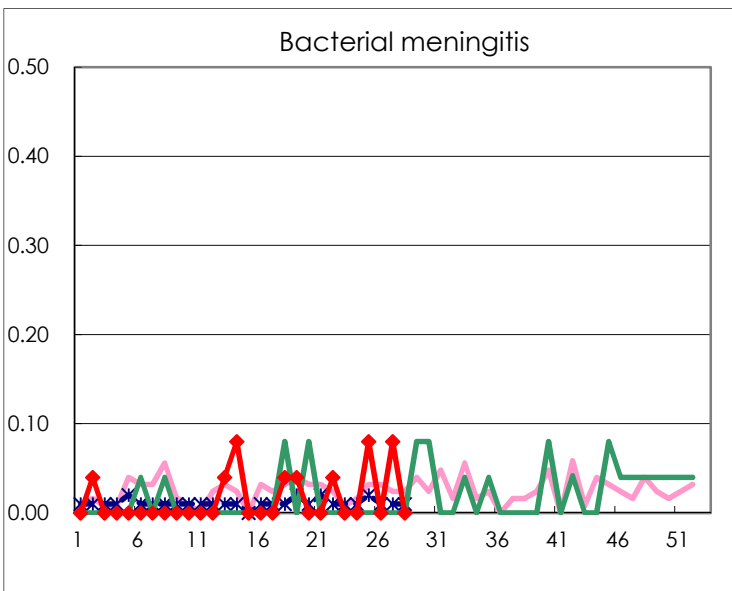
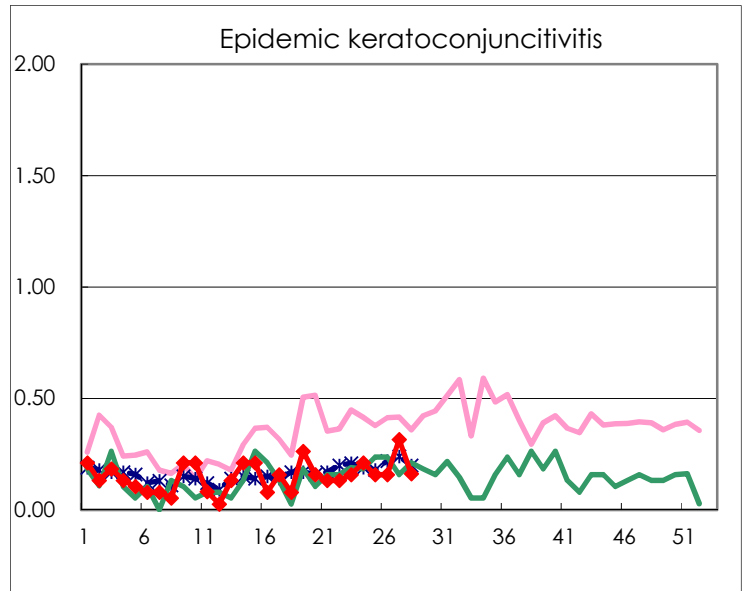
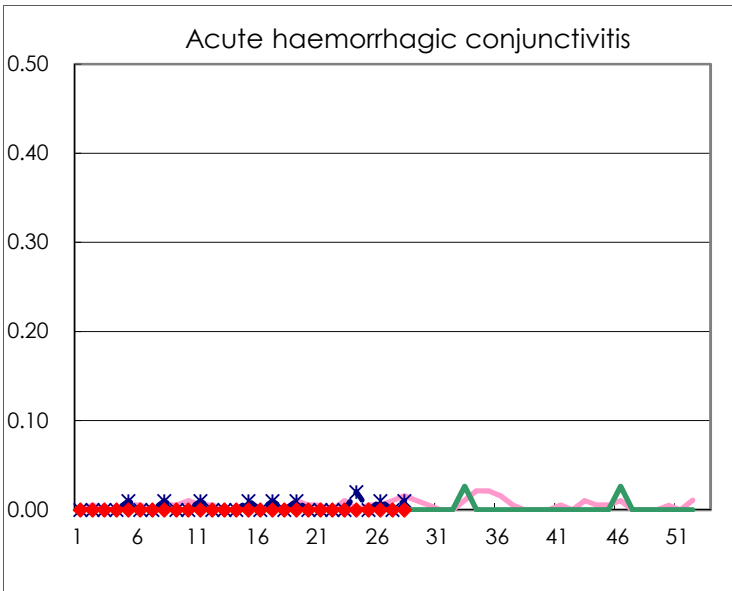
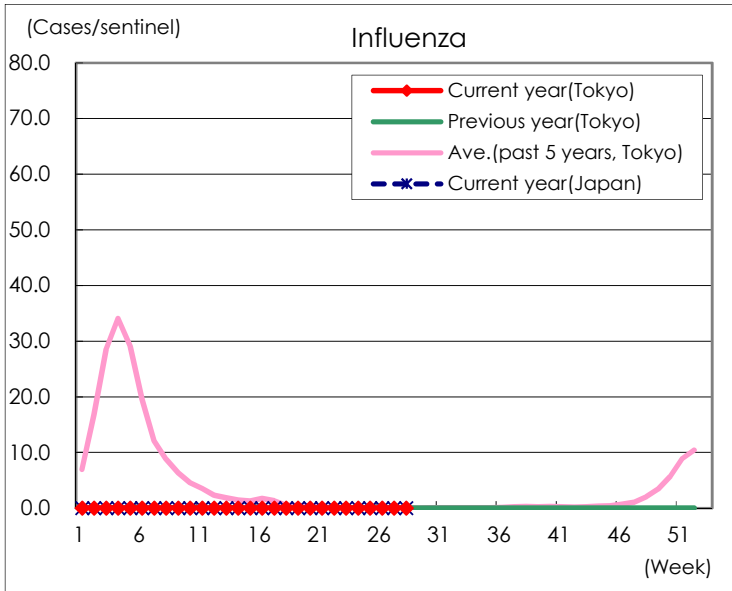
Diseases	Tokyo				
	25th	26th	27th	28th	/sentinel
Respiratory syncytial virus infection	121	182	278	375	1.49
Pharyngoconjunctival fever	82	88	75	71	0.28
Group A streptococcal pharyngitis	37	53	48	54	0.21
Infectious gastroenteritis	1,710	1,441	1,435	1,266	5.02
Chickenpox	22	33	17	15	0.06
Hand, foot, and mouth disease	184	315	567	637	2.53
Erythema infectiosum	2	5	4	2	0.01
Exanthem subitum	125	113	116	78	0.31
Herpangina	64	131	197	251	1.00
Mumps	10	10	9	6	0.02
Kawasaki disease	1	1	3	1	0.00
Cold with exanthems	12	9	11	7	0.03
Influenza				6	0.02
Acute hemorrhagic conjunctivitis					
Epidemic keratoconjunctivitis	6	6	12	6	0.16
Bacterial meningitis	2		2		
Aseptic meningitis		1			
Mycoplasma pneumonia					
Chlamydial pneumonia (excluding psittacosis)					
Infectious gastroenteritis (only by Rotavirus)					
Influenza-Associated Hospitalizations					

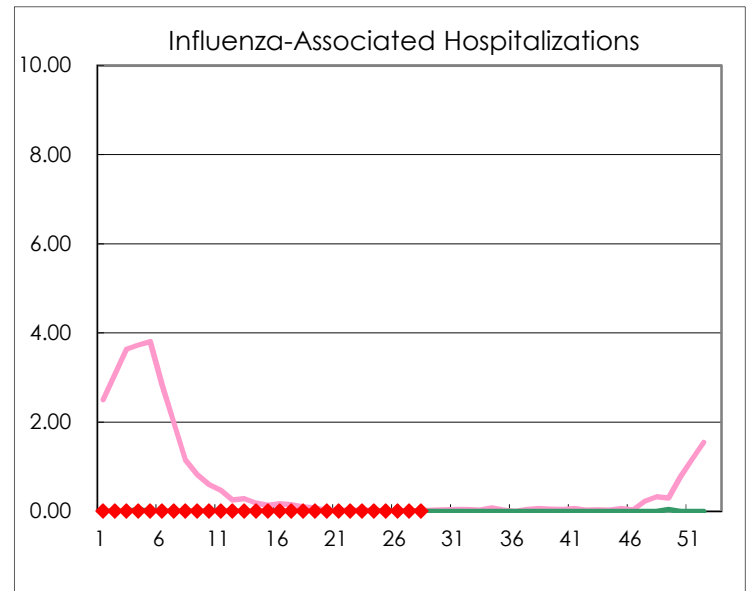
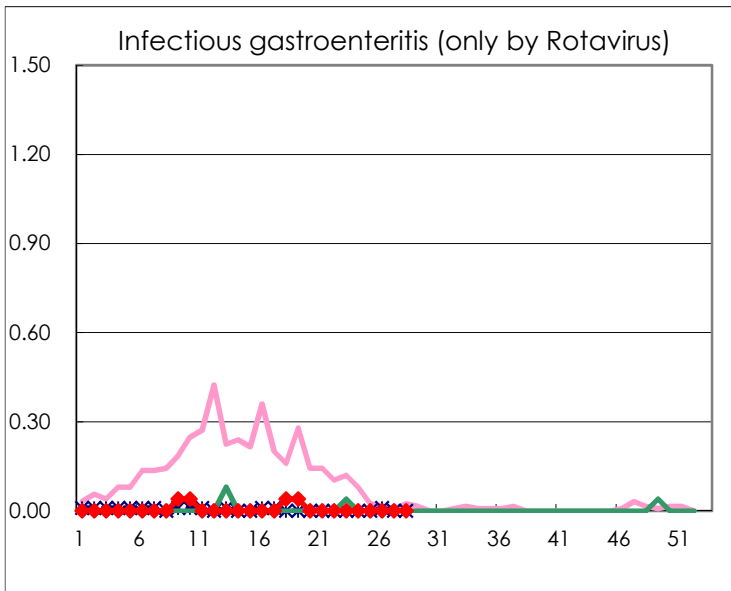
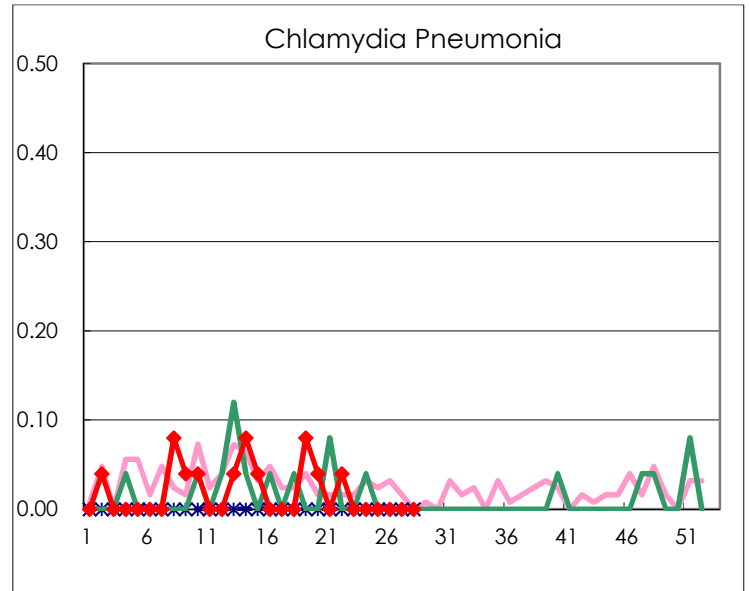
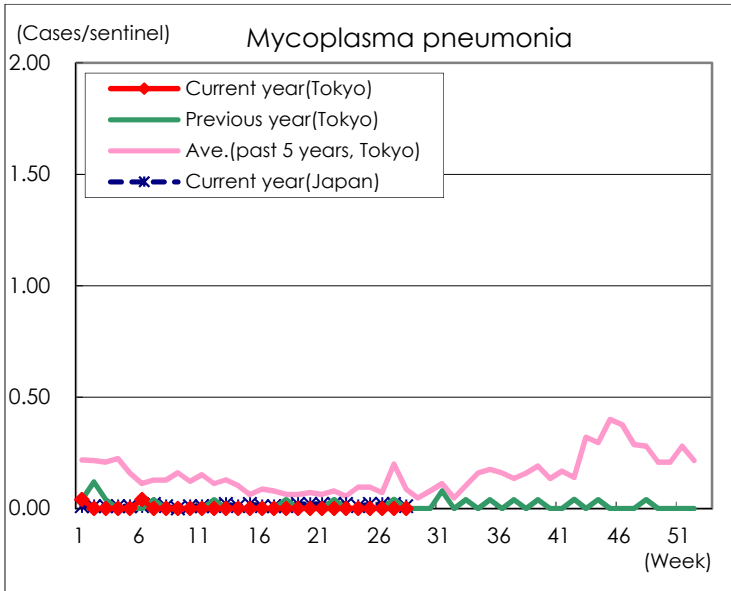
(Blank means 0.)

Disease Trend Graph (weekly reported cases per sentinel in comparison)









Number of sentinel facilities for weekly reporting		
Types of sentinels	Number of sentinels	Sentinels having reported
Pediatric	264	252
Influenza	419	398
Ophthalmic	39	37
Specially-designated	25	24