

---

INFECTIOUS DISEASES WEEKLY REPORT

# TOKYO IDWR

Tokyo Metropolitan Infectious Disease Surveillance Center

**4 August 2022 / Number 30**  
**( 7/25 ~ 7/31 )**

## Surveillance System in Tokyo, Japan

The infectious diseases which all physicians must report  
All physicians must report to health centers the incidence of the diseases which are shown at page one. Health centers electronically report the individual cases to Tokyo Metropolitan Infectious Disease Surveillance Center.

The infectious diseases required to be reported by the sentinels  
The numbers of patients who visit the sentinel clinics or hospitals during a week are reported to health centers in Tokyo. And they electronically report the numbers to Tokyo Metropolitan Infectious Disease Surveillance Center. We have about 500 sentinel clinics and hospitals in Tokyo.

Tokyo Metropolitan Institute of Public Health

TEL:81-3-3363-3213 FAX:81-3-5332-7365

e-mail:tmiph@section.metro.tokyo.jp

URL:idsc.tmiph.metro.tokyo.lg.jp/

---

Number of patients with the diseases which all physicians must report

Category	Diseases	Tokyo					Japan	
		27th	28th	29th	30th	Cum 2022	30th	Cum 2022
I	Ebola hemorrhagic fever							
	Crimean-Congo hemorrhagic fever							
	Smallpox							
	South American hemorrhagic fever							
	Plague							
	Marburg disease							
	Lassa fever							
II	Acute poliomyelitis							
	Tuberculosis	38	41	29	40	1,172	215	8,409
	Diphtheria							
	Severe Acute Respiratory Syndrome(SARS)							
	Middle East Respiratory Syndrome (MERS)							
	Avian influenza H5N1							
	Avian influenza H7N9							
III	Cholera		1			1		1
	Shigellosis	1				1		13
	Enterohemorrhagic Escherichia coli infection	8	12	7	18	162	145	1,446
	Typhoid fever		1			4		10
	Paratyphoid fever					1		5
IV	Hepatitis E		3	1	3	81	8	258
	West Nile fever							
	Hepatitis A		1			4	3	50
	Echinococcosis					3		16
	Yellow fever							
	Psittacosis					1		5
	Omsk hemorrhagic fever							
	Relapsing fever						1	10
	Kyasanur forest disease							
	Q fever							
	Rabies							
	Coccidioidomycosis							
	Monkeypox				2	2	2	2
	Zika virus infection							
	Severe Fever with Thrombocytopenia Syndrome						1	76
	Hemorrhagic fever with renal syndrome							
	Western equine encephalitis							
	Tick-borne encephalitis							
	Anthrax							
	Chikungunya fever					1		4
	Scrub typhus(Tsutsugamushi disease)					3	1	96
	Dengue fever	1			1	5	3	23
	Eastern equine encephalitis							
	Avian influenza (excluding H5N1 and H7N9)							
	Nipah virus infection							
	Japanese spotted fever						6	164
	Japanese encephalitis							1
	Hantavirus pulmonary syndrome							
	Herpes B virus infection							
	Glanders							
	Brucellosis							
	Venezuelan equine encephalitis							
	Hendra virus infection							
Epidemic typhus								
Botulism					1		1	
Malaria			1		3		11	
Tularemia								
Lyme disease							3	
Lyssavirus infection(excluding rabies)								
Rift valley fever								
Melioidosis							1	
Legionellosis	1	2	2	2	58	59	1,069	
Leptospirosis					1		4	
Rocky mountain spotted fever								

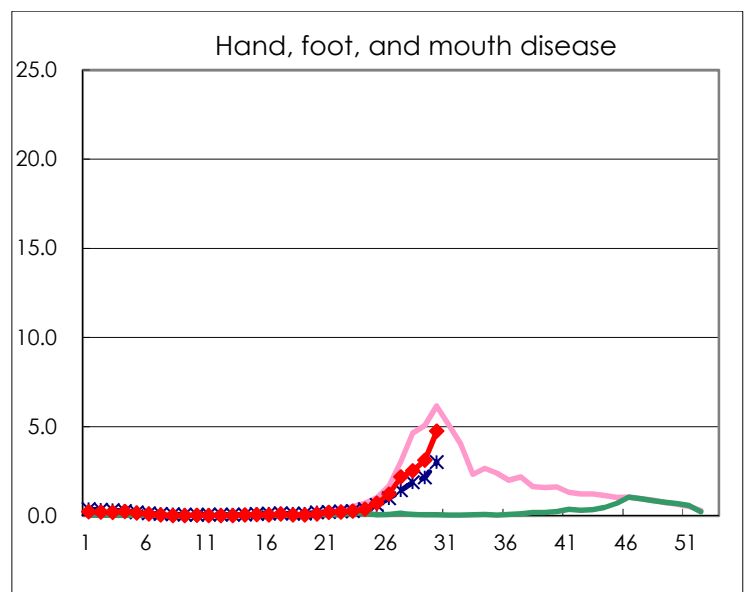
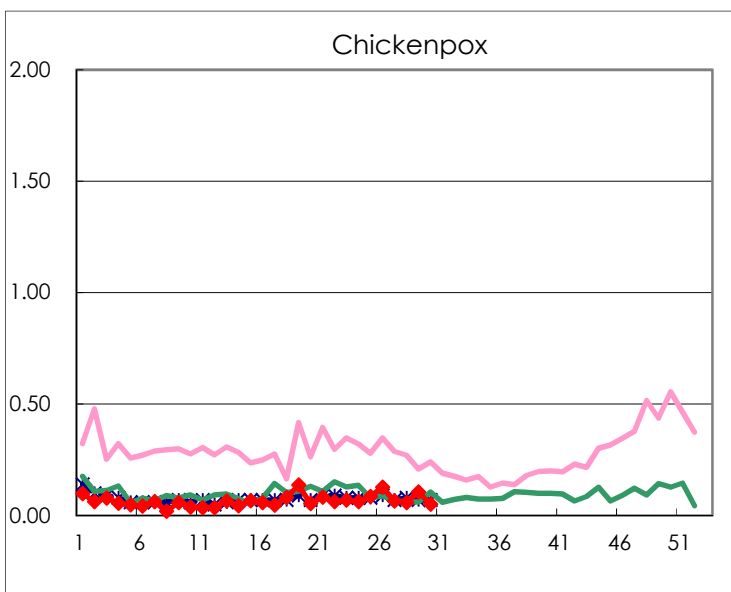
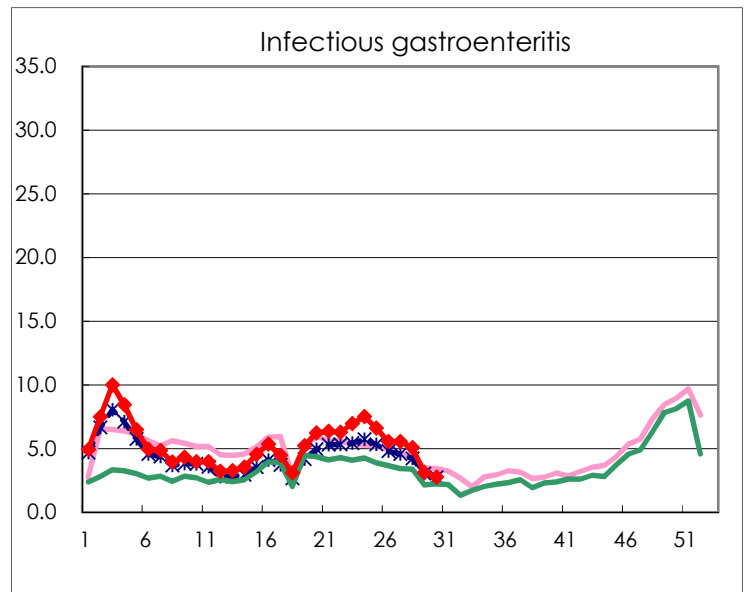
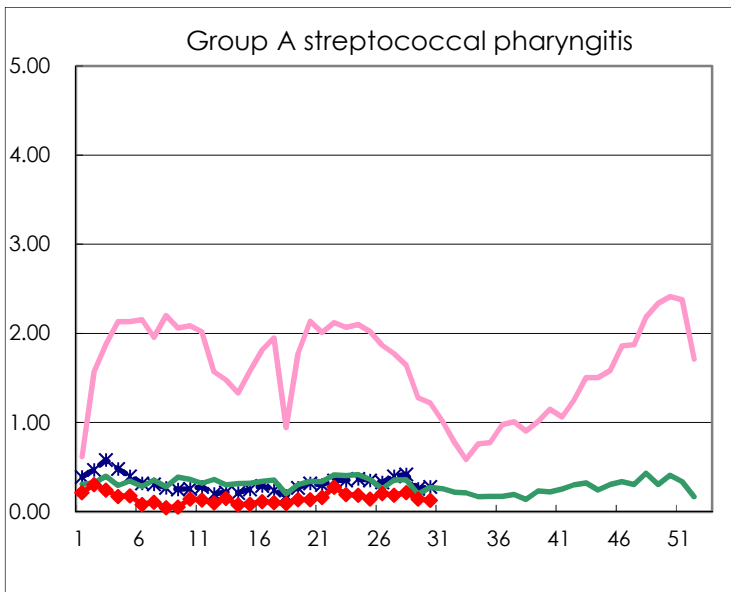
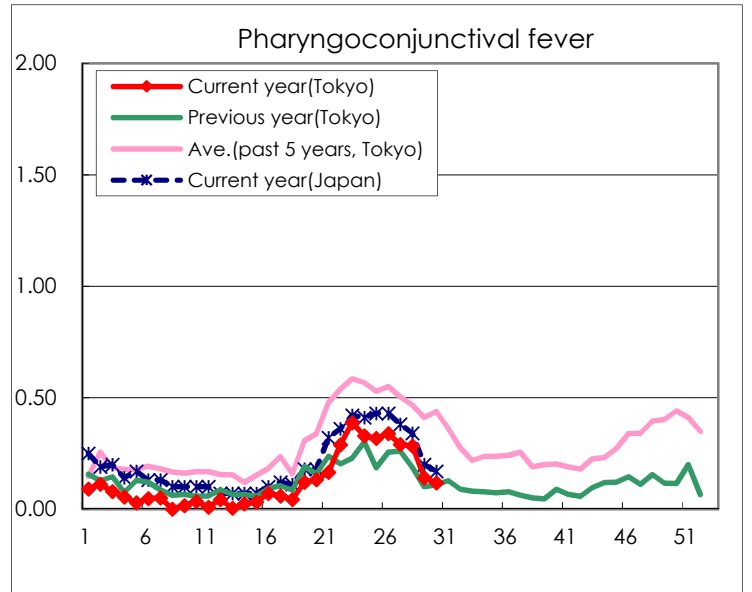
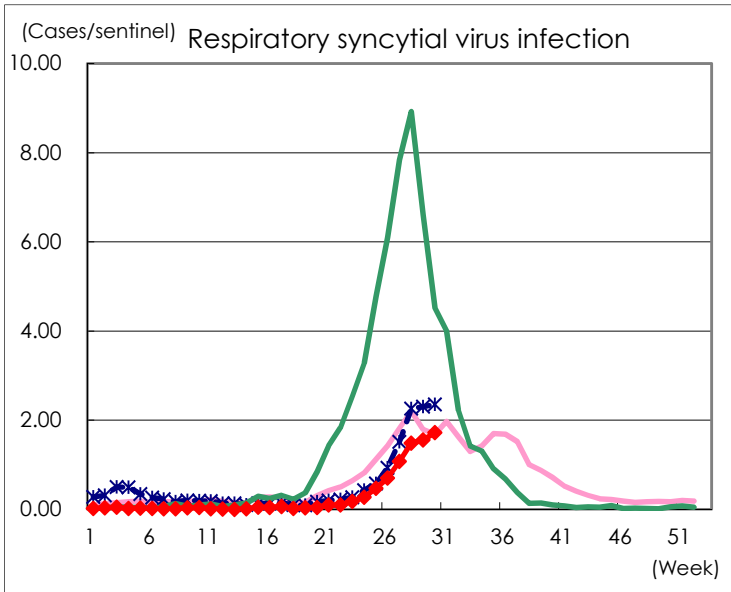
Category	Diseases	Tokyo					Japan	
		27th	28th	29th	30th	Cum 2022	30th	Cum 2022
V	Amebiasis	1	3	1	5	78	10	299
	Viral hepatitis(excluding hepatitis A and E)		1		1	22	1	117
	CRE infection	4	4	1	4	115	18	941
	Acute Flaccid Paralysis (excluding Acute poliomyelitis)						1	14
	Acute encephalitis(excluding JE and WNE)				1	10	4	171
	Cryptosporidiosis	1				2		6
	Creutzfeldt-Jakob disease					11	2	99
	Severe invasive streptococcal infections(TSLS)	3	1			69	8	433
	Acquired immunodeficiency syndrome (AIDS)	7	9	7	1	165	10	507
	Giardiasis					10	1	21
	Invasive <i>Haemophilus influenzae</i> disease		1	1	1	10	2	103
	Invasive meningococcal disease							4
	Invasive pneumococcal disease	3	4	3	1	83	10	711
	Varicella (limited to hospitalized case)	3		1		31	2	190
	Congenital rubella syndrome							
	Syphilis	86	69	74	46	1,948	191	6,716
	Disseminated cryptococcosis	1				8	3	86
	Tetanus					2		49
	Vancomycin-resistant <i>S. aureus</i> infection							
	Vancomycin-resistant <i>Enterococcus</i> infection			1		4	2	89
	Pertussis	1				22	4	291
Rubella					1	1	6	
Measles						1	3	
MDRA infection				1	2	1	7	

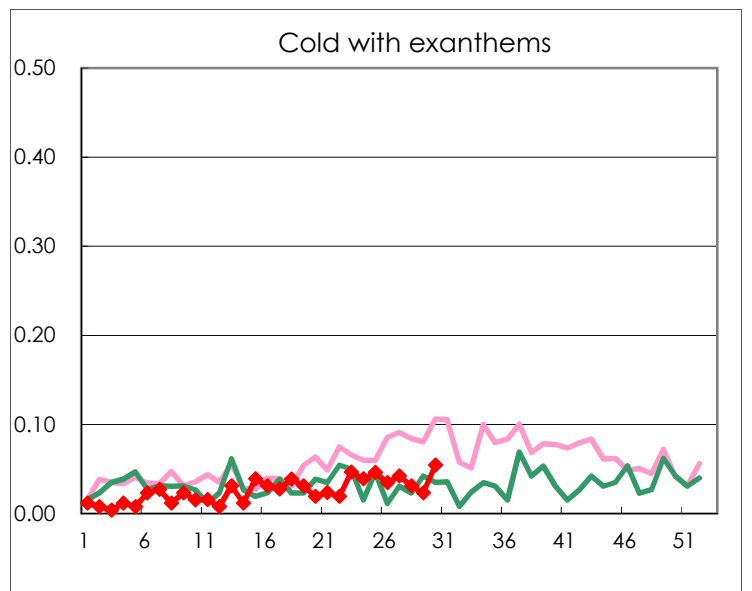
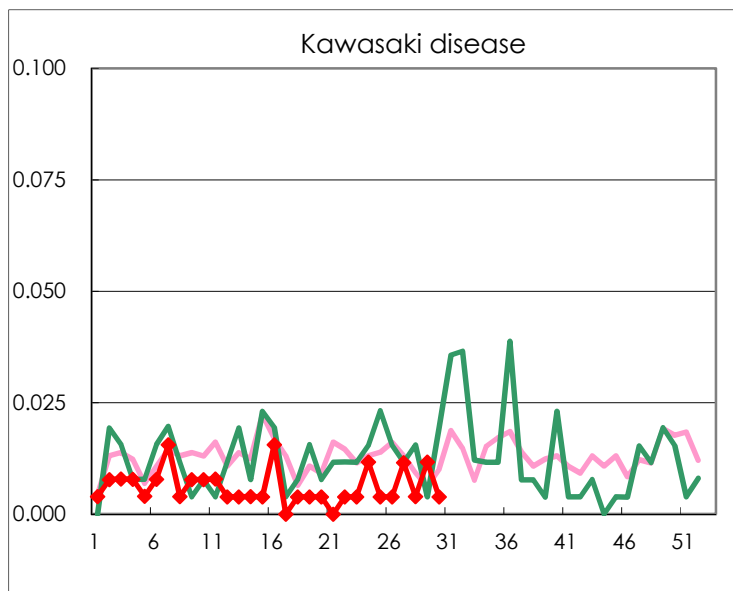
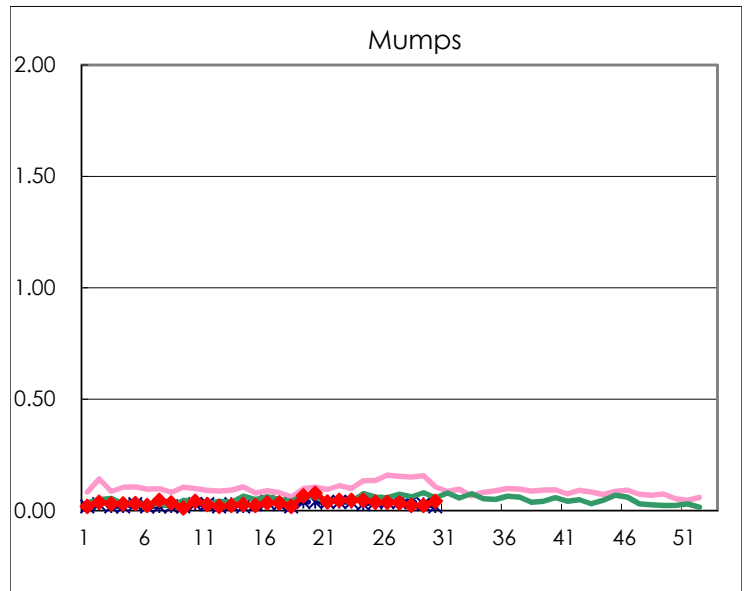
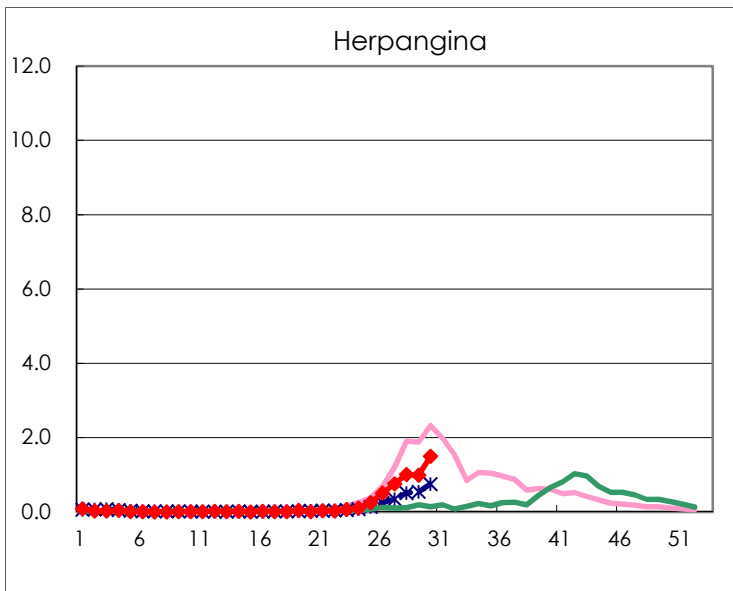
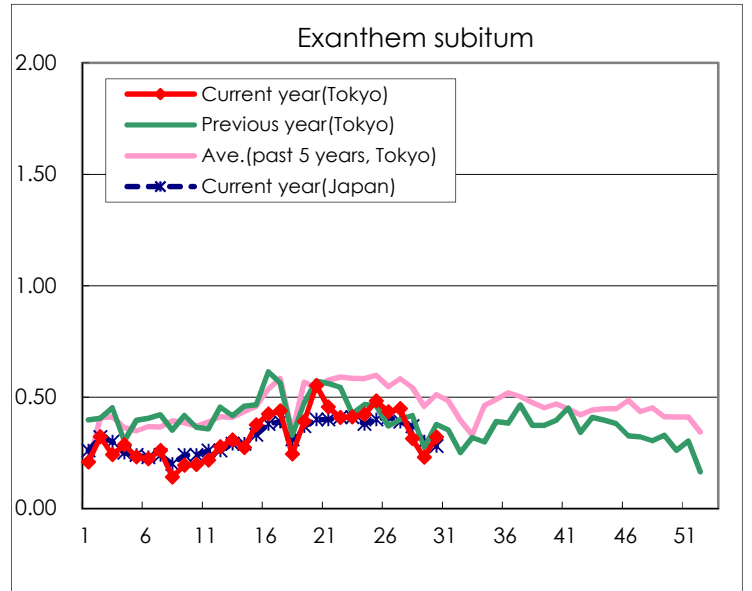
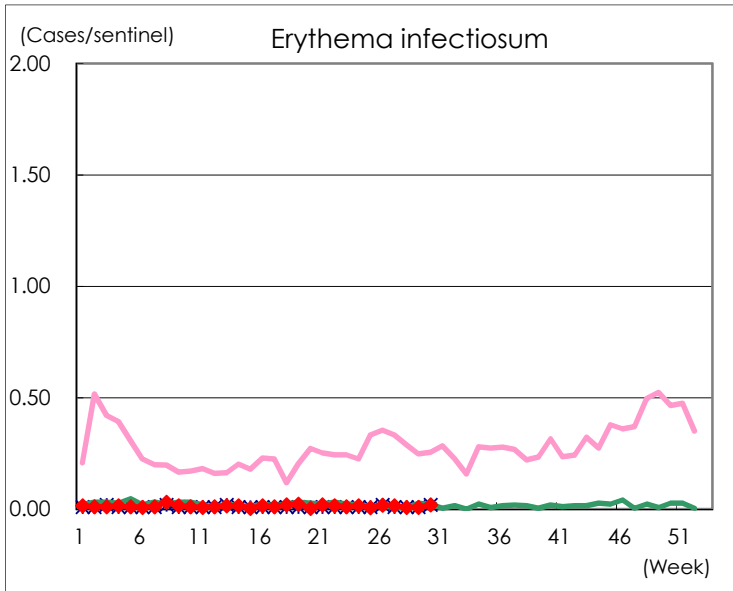
Number of patients with the diseases to be reported  
by the designated clinics and hospitals

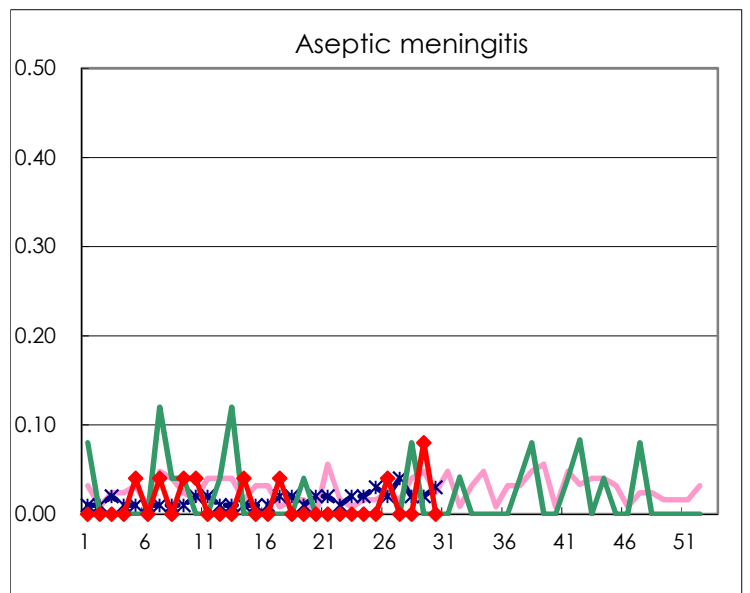
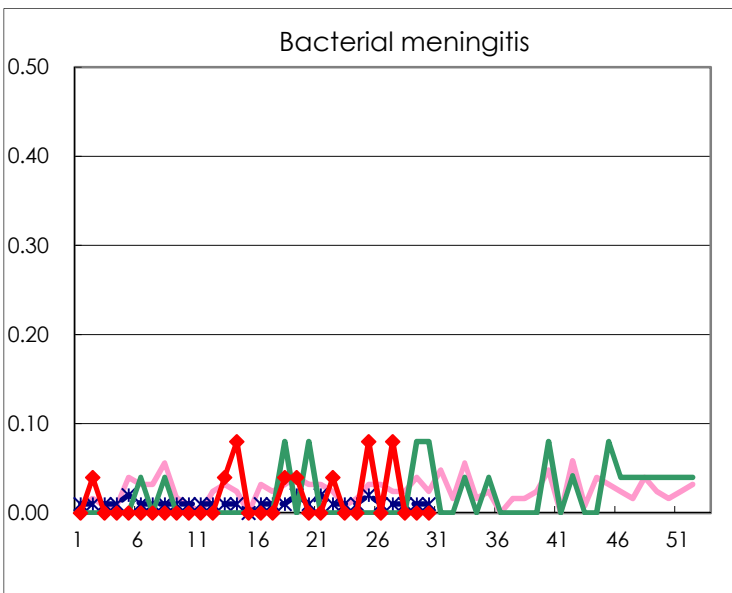
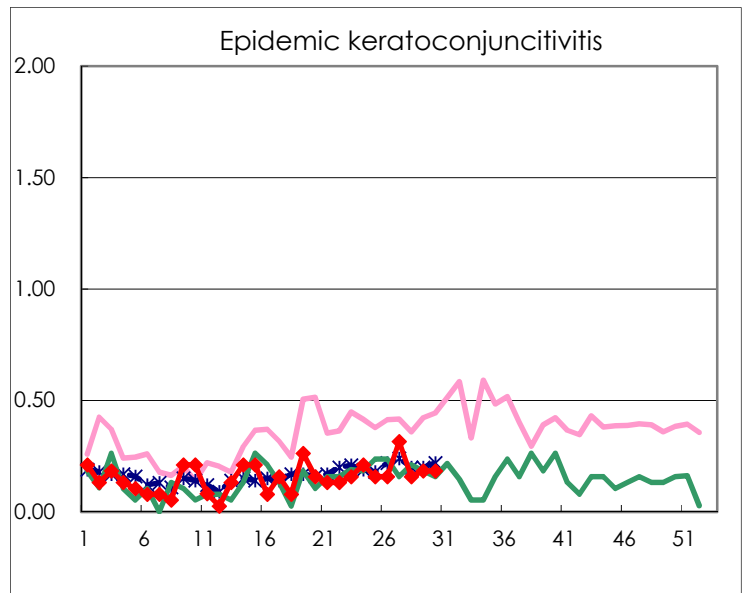
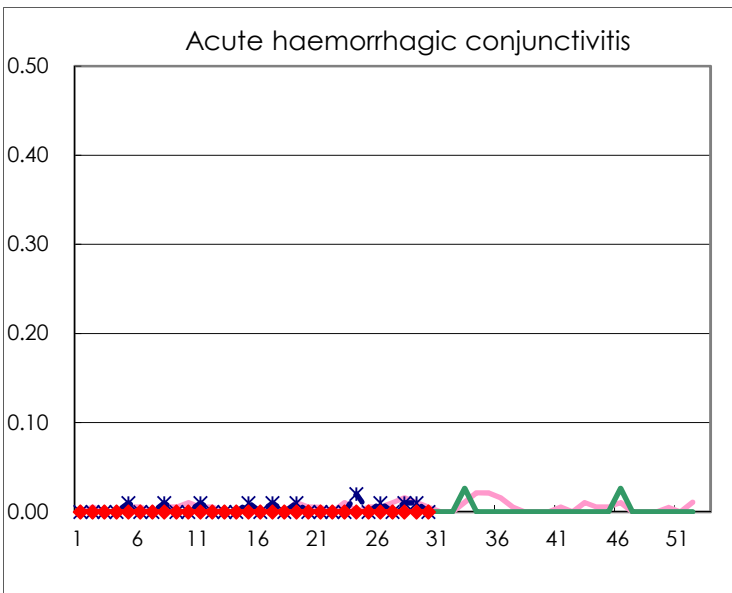
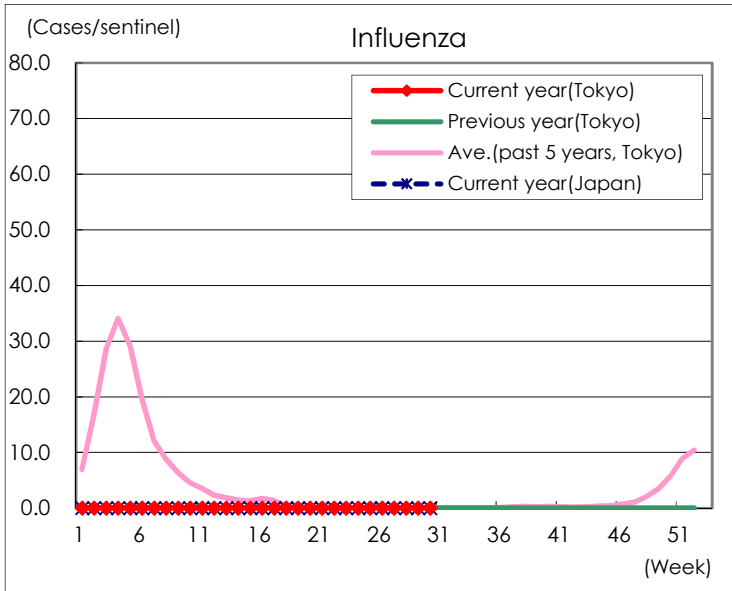
Diseases	Tokyo				
	27th	28th	29th	30th	/sentinel
Respiratory syncytial virus infection	278	379	399	440	1.72
Pharyngoconjunctival fever	75	72	36	30	0.12
Group A streptococcal pharyngitis	48	55	37	33	0.13
Infectious gastroenteritis	1,435	1,289	794	703	2.75
Chickenpox	17	15	27	13	0.05
Hand, foot, and mouth disease	567	641	795	1,216	4.75
Erythema infectiosum	4	2	2	5	0.02
Exanthem subitum	116	80	59	82	0.32
Herpangina	197	256	254	384	1.50
Mumps	9	6	6	11	0.04
Kawasaki disease	3	1	3	1	0.00
Cold with exanthems	11	8	6	14	0.05
Influenza		6	6	14	0.04
Acute hemorrhagic conjunctivitis					
Epidemic keratoconjunctivitis	12	6	7	7	0.18
Bacterial meningitis	2				
Aseptic meningitis			2		
Mycoplasma pneumonia					
Chlamydial pneumonia (excluding psittacosis)					
Infectious gastroenteritis (only by Rotavirus)					
Influenza-Associated Hospitalizations			1		

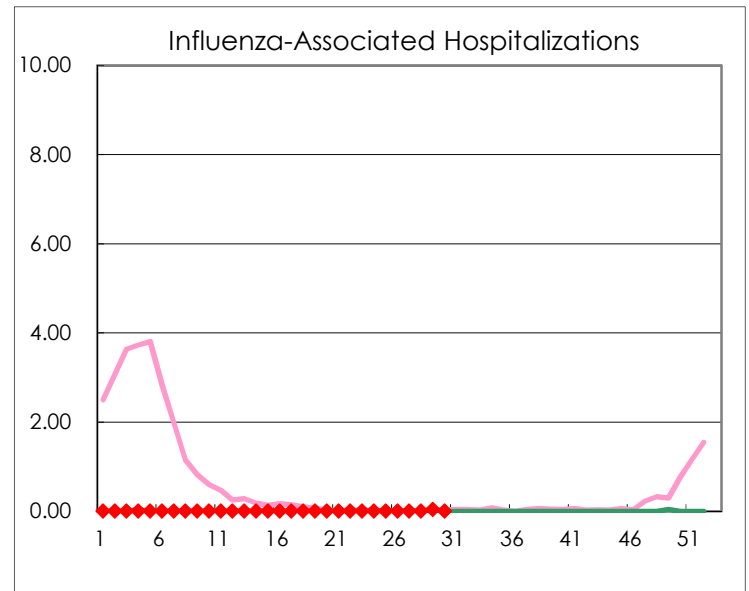
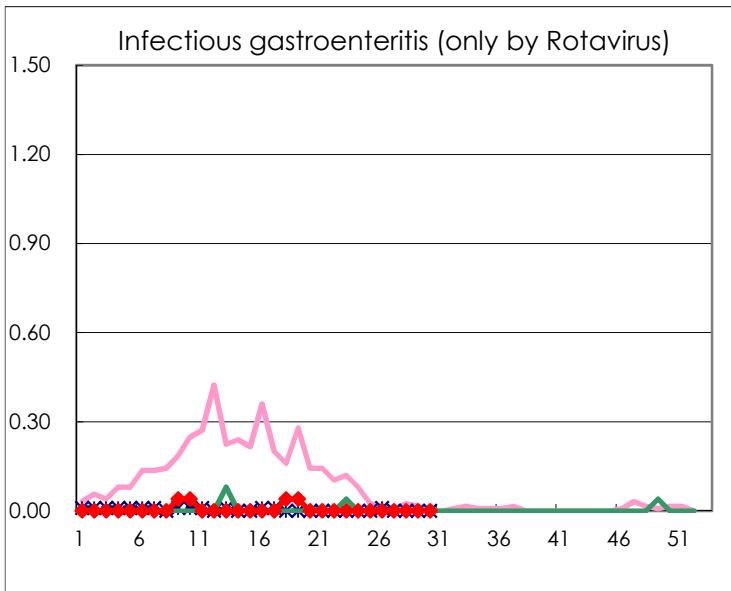
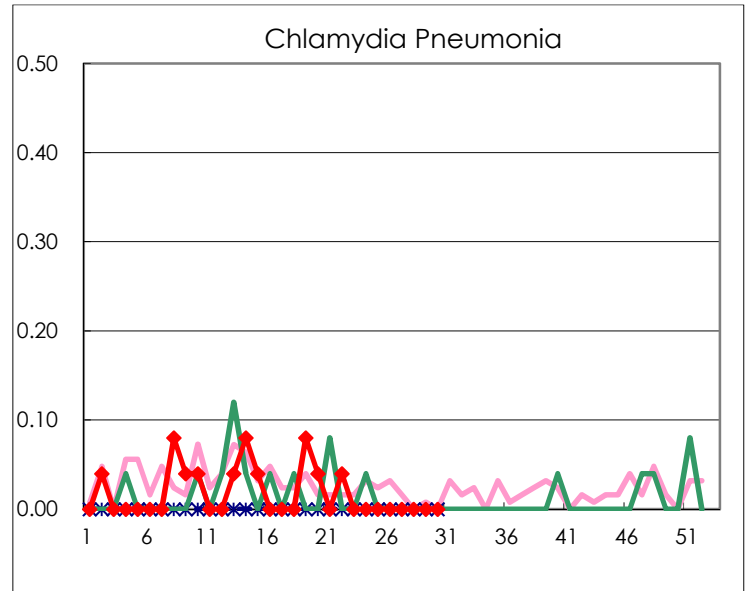
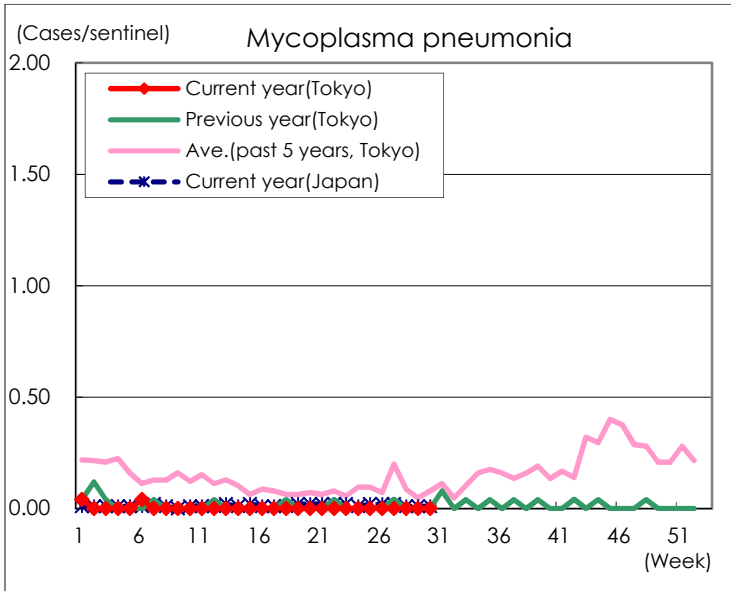
( Blank means 0. )

# Disease Trend Graph (weekly reported cases per sentinel in comparison)









Number of sentinel facilities for weekly reporting		
Types of sentinels	Number of sentinels	Sentinels having reported
Pediatric	264	256
Influenza	419	398
Ophthalmic	39	38
Specially-designated	25	25