

---

INFECTIOUS DISEASES WEEKLY REPORT

# TOKYO iDWR

Tokyo Metropolitan Infectious Disease Surveillance Center

**25 August 2022 / Number 33**  
**( 8/15 ~ 8/21 )**

## Surveillance System in Tokyo, Japan

The infectious diseases which all physicians must report  
All physicians must report to health centers the incidence of the diseases which are shown at page one. Health centers electronically report the individual cases to Tokyo Metropolitan Infectious Disease Surveillance Center.

The infectious diseases required to be reported by the sentinels  
The numbers of patients who visit the sentinel clinics or hospitals during a week are reported to health centers in Tokyo. And they electronically report the numbers to Tokyo Metropolitan Infectious Disease Surveillance Center. We have about 500 sentinel clinics and hospitals in Tokyo.

Tokyo Metropolitan Institute of Public Health

TEL:81-3-3363-3213 FAX:81-3-5332-7365

e-mail:tmiph@section.metro.tokyo.jp

URL:idsc.tmiph.metro.tokyo.lg.jp/

---

Number of patients with the diseases which all physicians must report

Category	Diseases	Tokyo					Japan	
		30th	31st	32nd	33rd	Cum 2022	33rd	Cum 2022
I	Ebola hemorrhagic fever							
	Crimean-Congo hemorrhagic fever							
	Smallpox							
	South American hemorrhagic fever							
	Plague							
	Marburg disease							
	Lassa fever							
II	Acute poliomyelitis							
	Tuberculosis	45	32	36	36	1,281	203	9,183
	Diphtheria							
	Severe Acute Respiratory Syndrome(SARS)							
	Middle East Respiratory Syndrome (MERS)							
	Avian influenza H5N1							
	Avian influenza H7N9							
III	Cholera					1		1
	Shigellosis				1	2	1	14
	Enterohemorrhagic Escherichia coli infection	19	24	9	13	209	124	1,862
	Typhoid fever					4		10
	Paratyphoid fever					1		5
IV	Hepatitis E	4	2	1	1	86	6	281
	West Nile fever							
	Hepatitis A					4		55
	Echinococcosis					3		16
	Yellow fever							
	Psittacosis					1	1	8
	Omsk hemorrhagic fever							
	Relapsing fever							11
	Kyasanur forest disease							
	Q fever							
	Rabies							
	Coccidioidomycosis							1
	Monkeypox	2				2		3
	Zika virus infection							
	Severe Fever with Thrombocytopenia Syndrome						3	85
	Hemorrhagic fever with renal syndrome							
	Western equine encephalitis							
	Tick-borne encephalitis							
	Anthrax							
	Chikungunya fever					1		4
	Scrub typhus(Tsutsugamushi disease)					3		97
	Dengue fever	1		1		6		35
	Eastern equine encephalitis							
	Avian influenza (excluding H5N1 and H7N9)							
	Nipah virus infection							
	Japanese spotted fever						7	195
	Japanese encephalitis							1
	Hantavirus pulmonary syndrome							
	Herpes B virus infection							
	Glanders							
	Brucellosis							
	Venezuelan equine encephalitis							
	Hendra virus infection							
Epidemic typhus								
Botulism					1		1	
Malaria			1		4		12	
Tularemia								
Lyme disease		2			2	1	10	
Lyssavirus infection(excluding rabies)								
Rift valley fever								
Melioidosis							2	
Legionellosis	3	3	4		66	34	1,243	
Leptospirosis					1		5	
Rocky mountain spotted fever								

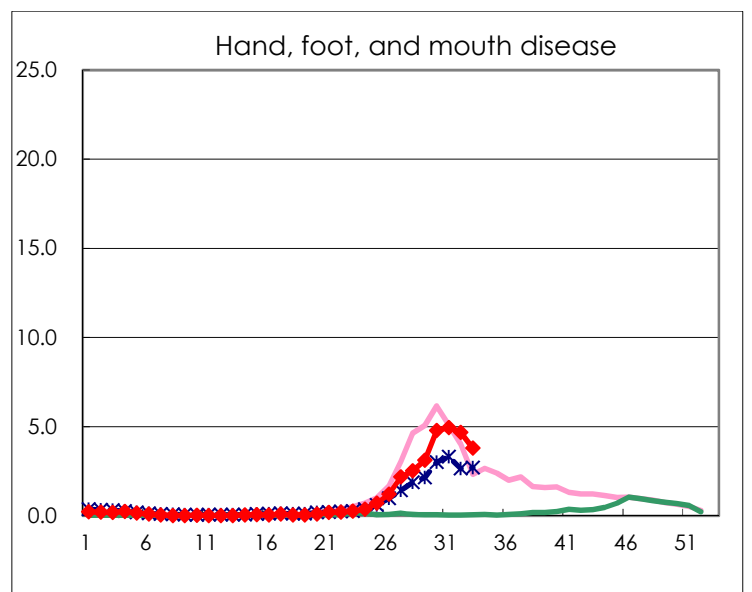
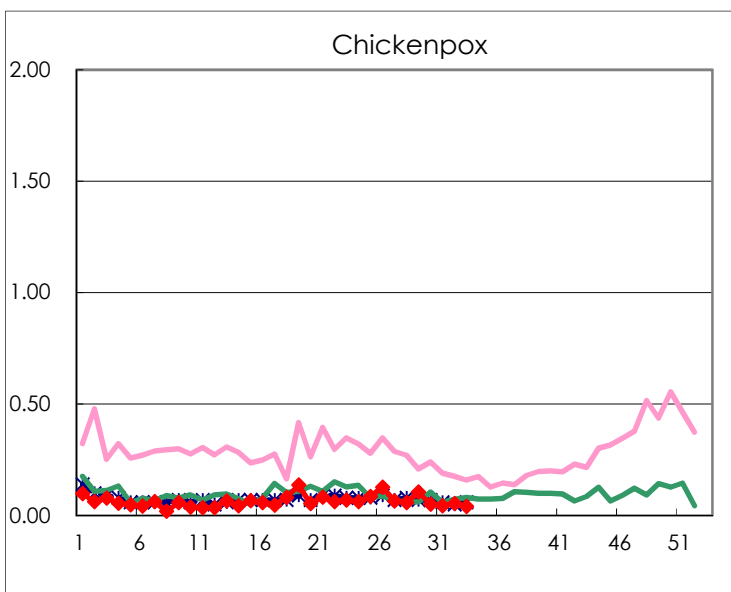
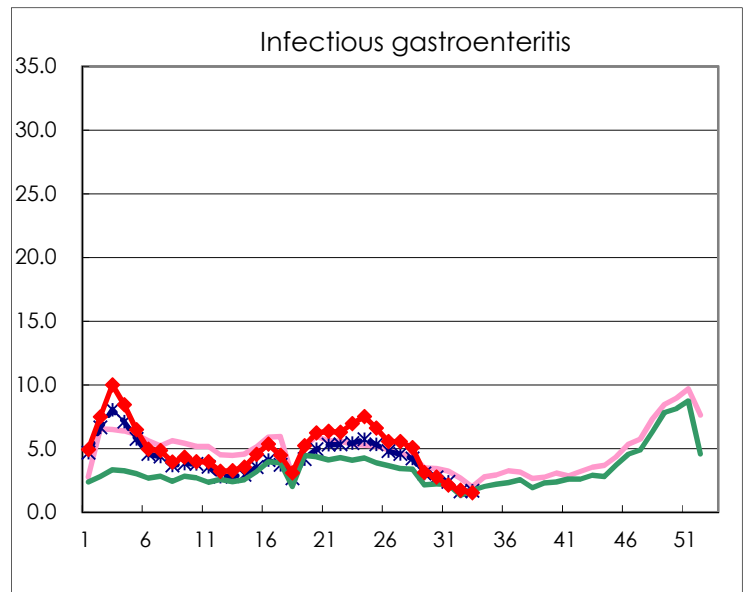
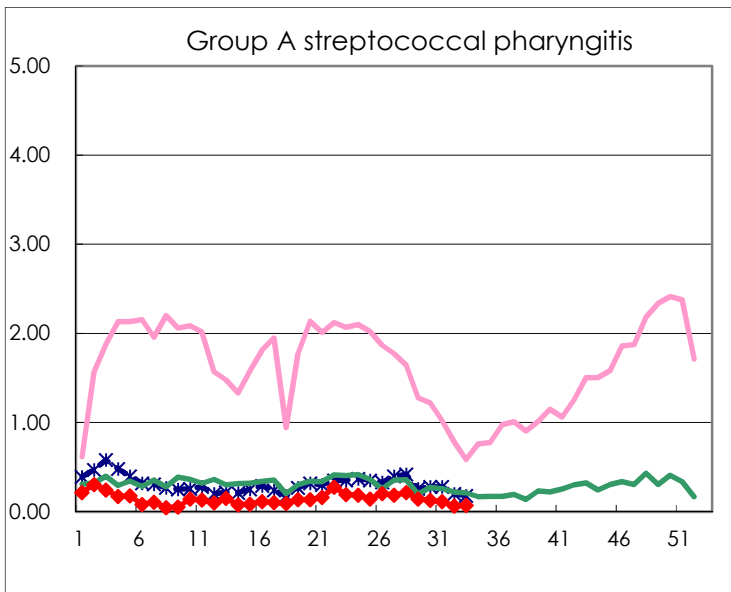
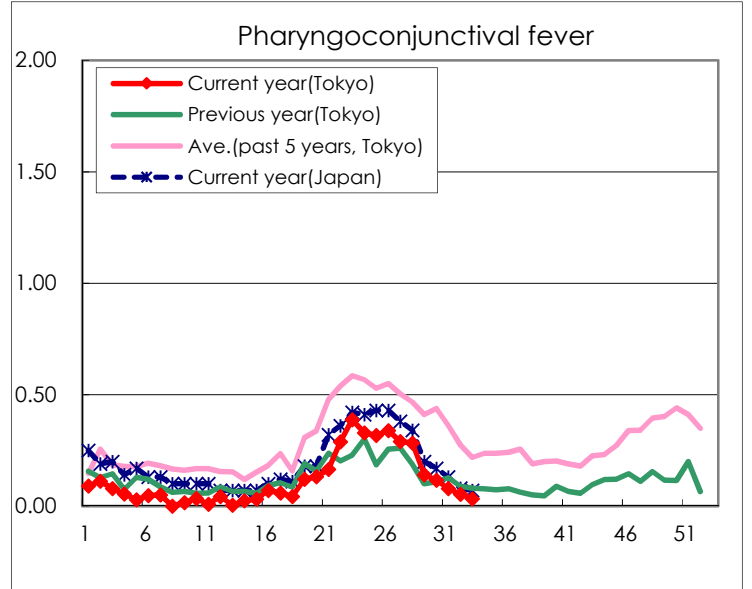
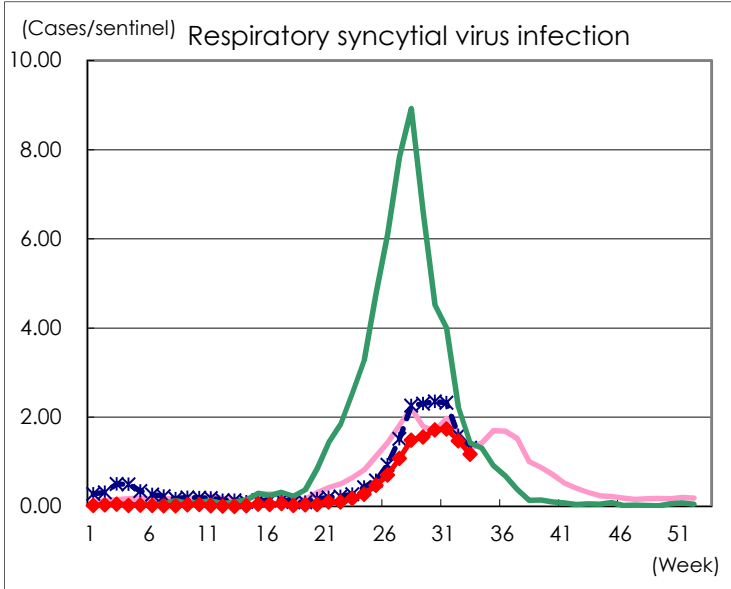
Category	Diseases	Tokyo					Japan	
		30th	31st	32nd	33rd	Cum 2022	33rd	Cum 2022
V	Amebiasis	5	3		2	83	10	332
	Viral hepatitis(excluding hepatitis A and E)	1	2	1		25	2	131
	CRE infection	5	2	3	1	122	27	1,052
	Acute Flaccid Paralysis (excluding Acute poliomyelitis)							15
	Acute encephalitis(excluding JE and WNE)	1	5	1	2	18	9	214
	Cryptosporidiosis					2		6
	Creutzfeldt-Jakob disease			1		12	1	111
	Severe invasive streptococcal infections(TSLS)		1		1	71	5	474
	Acquired immunodeficiency syndrome (AIDS)	2	8	4	3	181	7	551
	Giardiasis				1	11		24
	Invasive <i>Haemophilus influenzae</i> disease	1	1		1	12	3	113
	Invasive meningococcal disease							5
	Invasive pneumococcal disease	1	3	2	4	92	14	762
	Varicella (limited to hospitalized case)					31	1	201
	Congenital rubella syndrome							
	Syphilis	57	91	64	83	2,198	149	7,525
	Disseminated cryptococcosis		1	1	1	11	1	93
	Tetanus			1	1	4	3	58
	Vancomycin-resistant <i>S. aureus</i> infection							
	Vancomycin-resistant <i>Enterococcus</i> infection					4		97
	Pertussis		3	2	2	29	1	313
Rubella					1		6	
Measles							5	
MDRA infection	1				2		8	

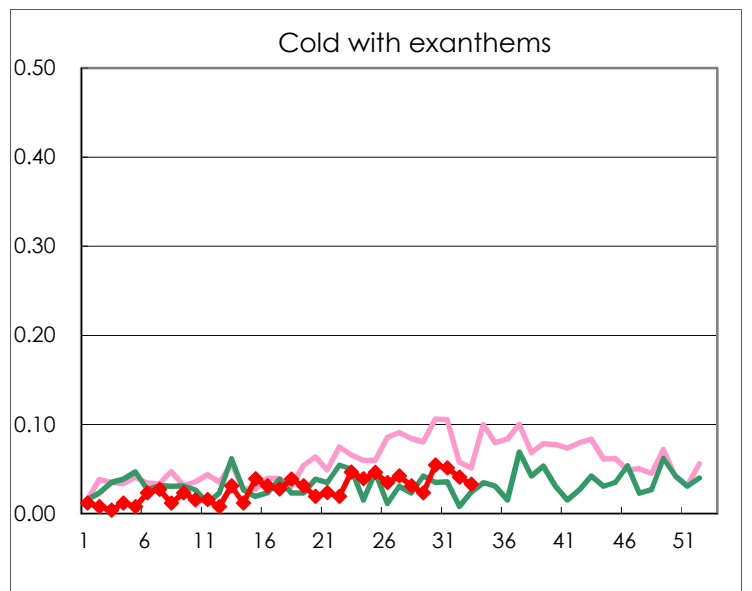
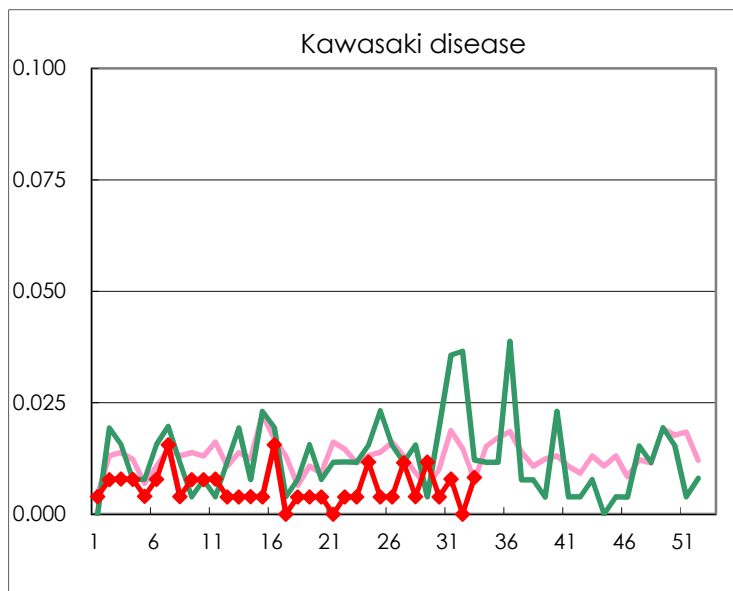
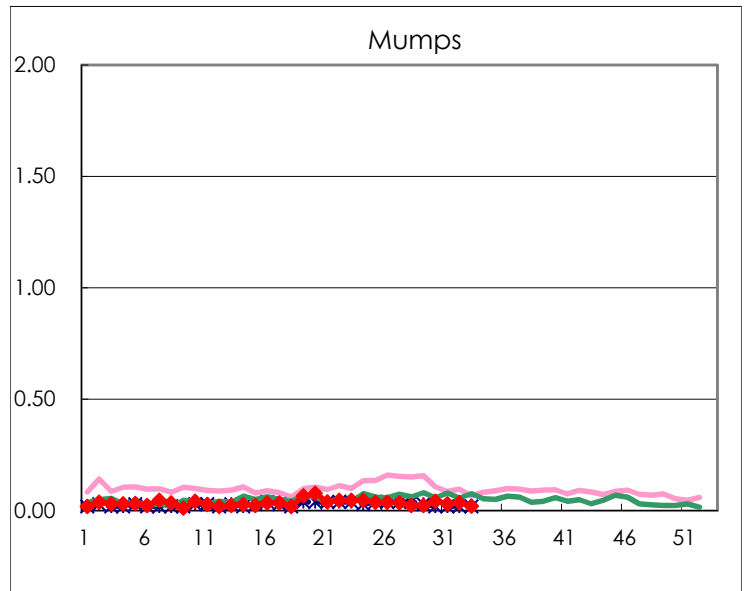
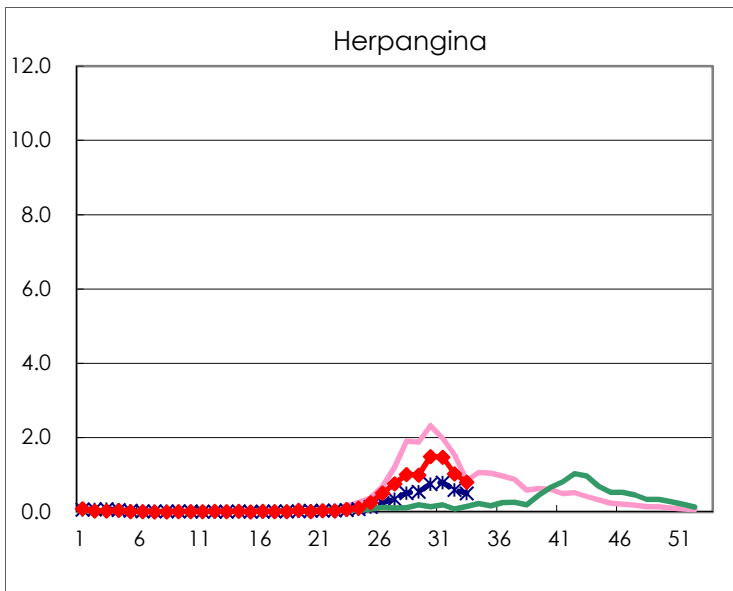
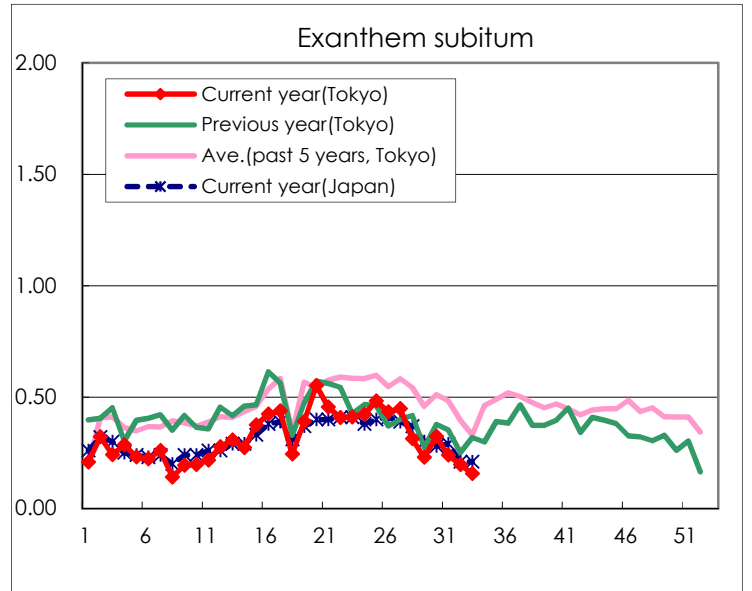
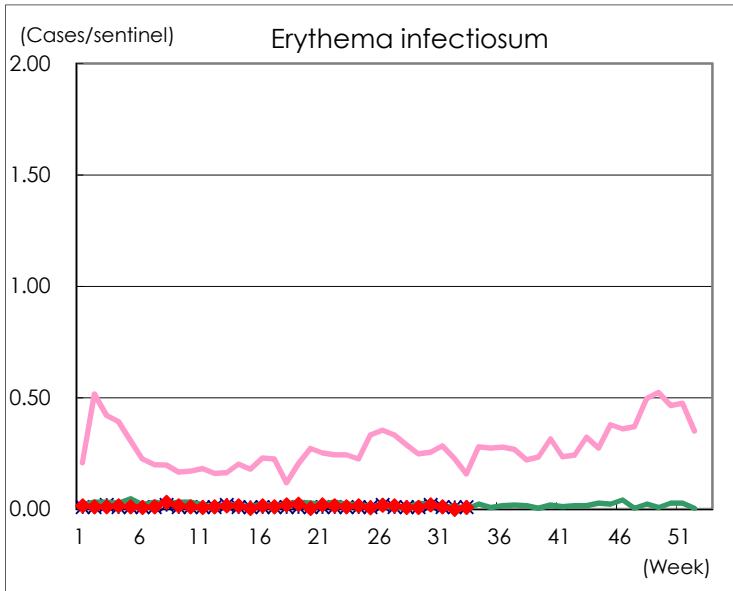
Number of patients with the diseases to be reported  
by the designated clinics and hospitals

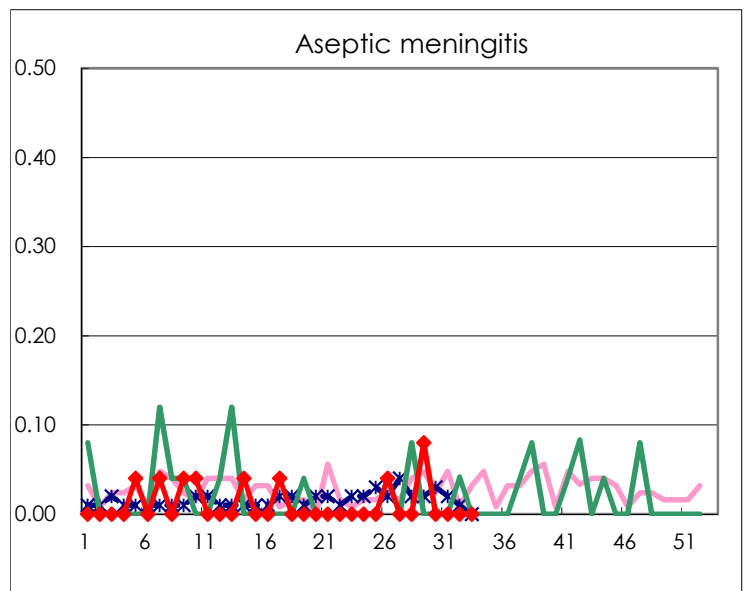
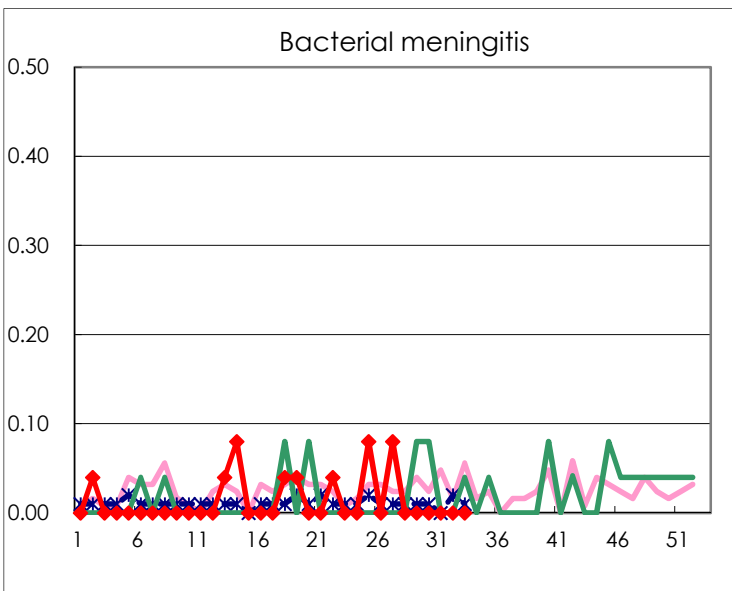
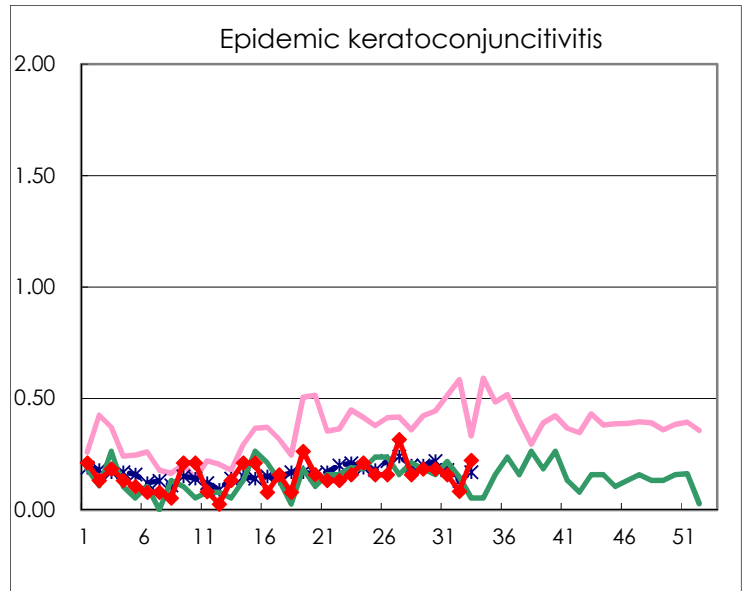
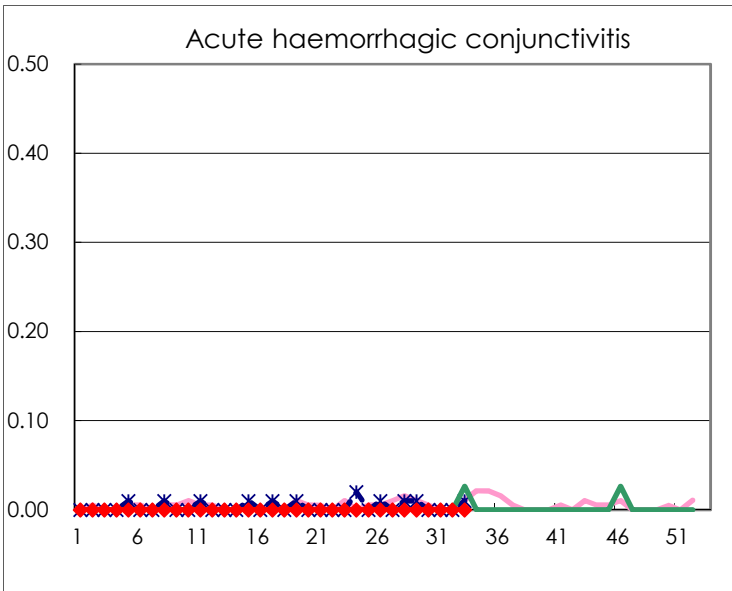
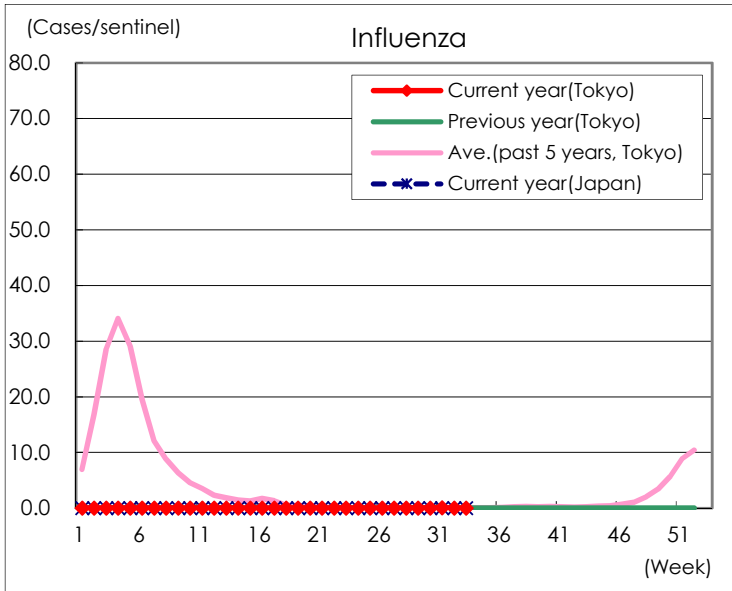
Diseases	Tokyo				
	30th	31st	32nd	33rd	/sentinel
Respiratory syncytial virus infection	440	441	358	284	1.17
Pharyngoconjunctival fever	30	20	13	8	0.03
Group A streptococcal pharyngitis	33	29	16	17	0.07
Infectious gastroenteritis	705	542	420	370	1.52
Chickenpox	13	11	13	10	0.04
Hand, foot, and mouth disease	1,228	1,258	1,143	923	3.80
Erythema infectiosum	5	3		2	0.01
Exanthem subitum	83	61	48	38	0.16
Herpangina	384	375	250	194	0.80
Mumps	11	8	9	5	0.02
Kawasaki disease	1	2		2	0.01
Cold with exanthems	14	13	10	8	0.03
Influenza	15	23	15	8	0.02
Acute hemorrhagic conjunctivitis					
Epidemic keratoconjunctivitis	7	6	3	8	0.22
Bacterial meningitis					
Aseptic meningitis					
Mycoplasma pneumonia					
Chlamydial pneumonia (excluding psittacosis)		2			
Infectious gastroenteritis (only by Rotavirus)					
Influenza-Associated Hospitalizations		1			

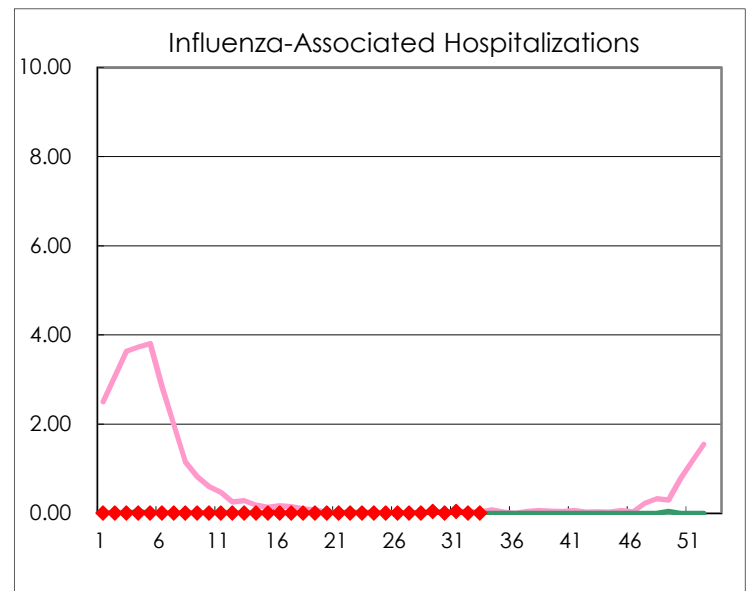
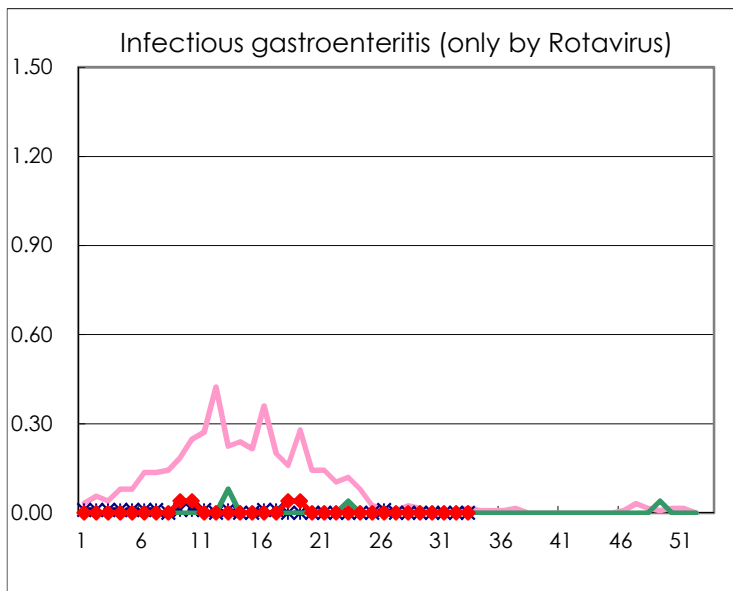
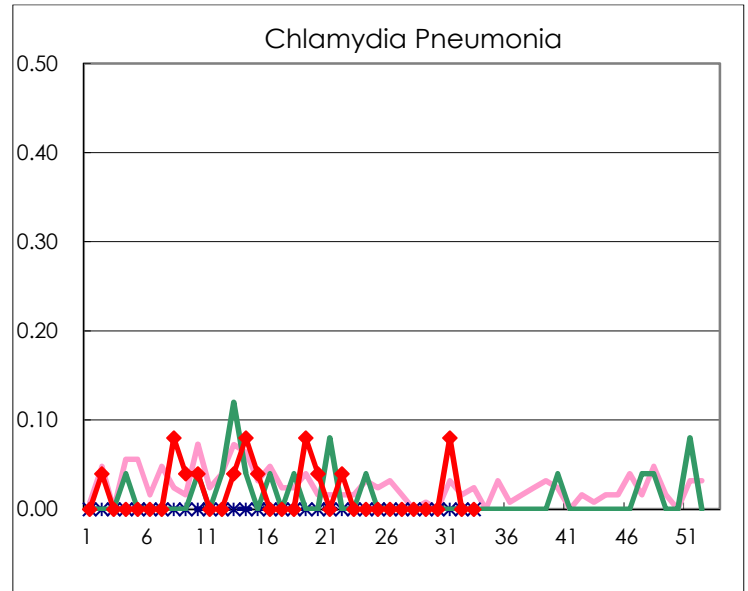
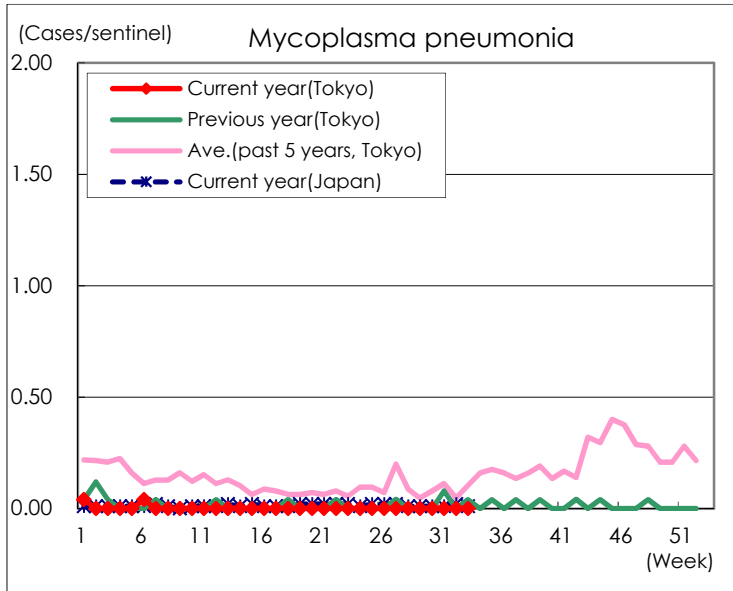
( Blank means 0. )

# Disease Trend Graph (weekly reported cases per sentinel in comparison)









Number of sentinel facilities for weekly reporting		
Types of sentinels	Number of sentinels	Sentinels having reported
Pediatric	264	243
Influenza	419	389
Ophthalmic	39	36
Specially-designated	25	25