

---

INFECTIOUS DISEASES WEEKLY REPORT

# TOKYO IDWR

Tokyo Metropolitan Infectious Disease Surveillance Center

**1 September 2022 / Number 34**  
**( 8/22 ~ 8/28 )**

## Surveillance System in Tokyo, Japan

The infectious diseases which all physicians must report  
All physicians must report to health centers the incidence of the diseases which are shown at page one. Health centers electronically report the individual cases to Tokyo Metropolitan Infectious Disease Surveillance Center.

The infectious diseases required to be reported by the sentinels  
The numbers of patients who visit the sentinel clinics or hospitals during a week are reported to health centers in Tokyo. And they electronically report the numbers to Tokyo Metropolitan Infectious Disease Surveillance Center. We have about 500 sentinel clinics and hospitals in Tokyo.

Tokyo Metropolitan Institute of Public Health

TEL:81-3-3363-3213 FAX:81-3-5332-7365

e-mail:tmiph@section.metro.tokyo.jp

URL:idsc.tmiph.metro.tokyo.lg.jp/

---

Number of patients with the diseases which all physicians must report

Category	Diseases	Tokyo					Japan	
		31st	32nd	33rd	34th	Cum 2022	34th	Cum 2022
I	Ebola hemorrhagic fever							
	Crimean-Congo hemorrhagic fever							
	Smallpox							
	South American hemorrhagic fever							
	Plague							
	Marburg disease							
	Lassa fever							
II	Acute poliomyelitis							
	Tuberculosis	33	38	38	39	1,325	199	9,453
	Diphtheria							
	Severe Acute Respiratory Syndrome(SARS)							
	Middle East Respiratory Syndrome (MERS)							
	Avian influenza H5N1							
	Avian influenza H7N9							
III	Cholera					1		1
	Shigellosis			1		2		14
	Enterohemorrhagic Escherichia coli infection	24	9	13	19	229	123	2,014
	Typhoid fever					4		10
	Paratyphoid fever					1	1	6
IV	Hepatitis E	2	1	1		87	3	286
	West Nile fever							
	Hepatitis A					4		55
	Echinococcosis					3		16
	Yellow fever							
	Psittacosis					1		8
	Omsk hemorrhagic fever							
	Relapsing fever						2	13
	Kyasanur forest disease							
	Q fever							
	Rabies							
	Coccidioidomycosis							1
	Monkeypox					2		3
	Zika virus infection							
	Severe Fever with Thrombocytopenia Syndrome							87
	Hemorrhagic fever with renal syndrome							
	Western equine encephalitis							
	Tick-borne encephalitis							
	Anthrax							
	Chikungunya fever					1		4
	Scrub typhus(Tsutsugamushi disease)					3		97
	Dengue fever		1			6	1	36
	Eastern equine encephalitis							
	Avian influenza (excluding H5N1 and H7N9)							
	Nipah virus infection							
	Japanese spotted fever						7	205
	Japanese encephalitis							1
	Hantavirus pulmonary syndrome							
	Herpes B virus infection							
	Glanders							
	Brucellosis							
	Venezuelan equine encephalitis							
	Hendra virus infection							
Epidemic typhus								
Botulism					1		1	
Malaria		1			4	2	14	
Tularemia								
Lyme disease	2				2	1	11	
Lyssavirus infection(excluding rabies)								
Rift valley fever								
Melioidosis							2	
Legionellosis	3	4		1	67	38	1,296	
Leptospirosis					1	2	8	
Rocky mountain spotted fever								

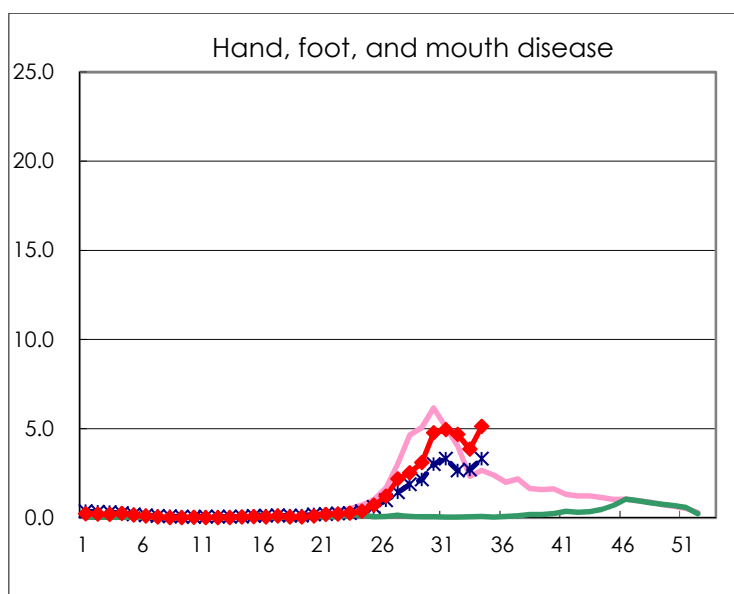
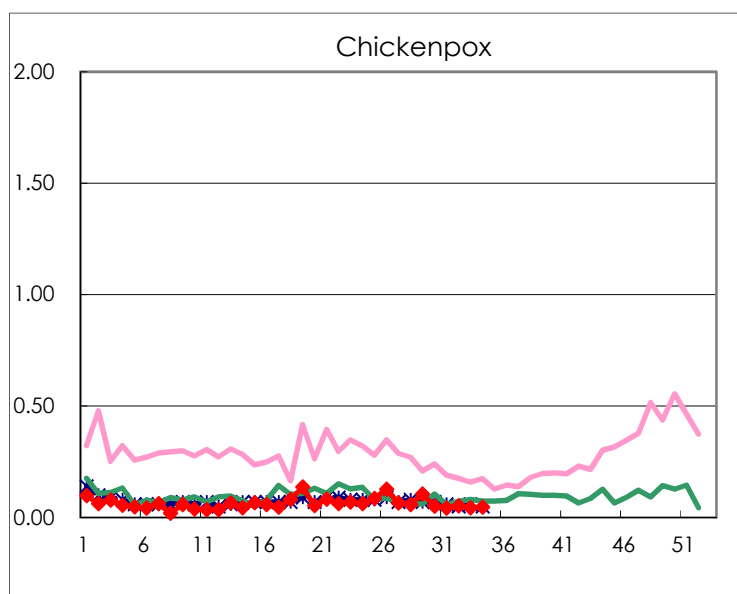
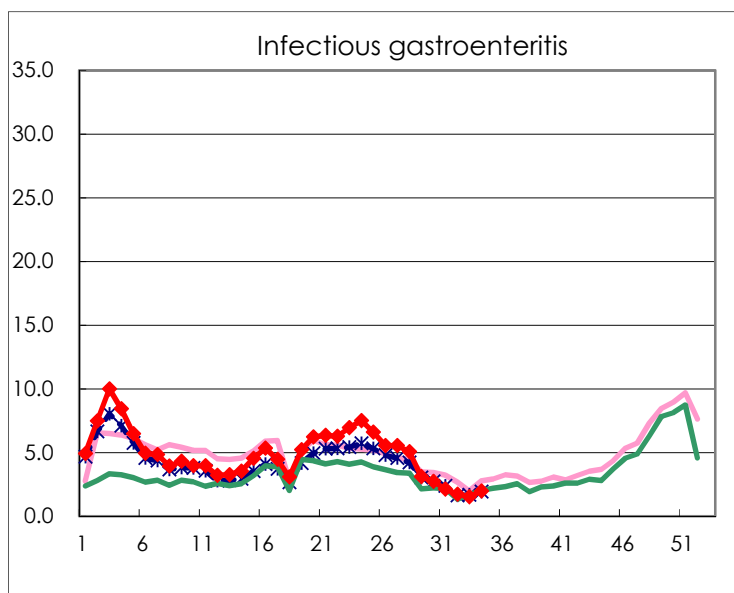
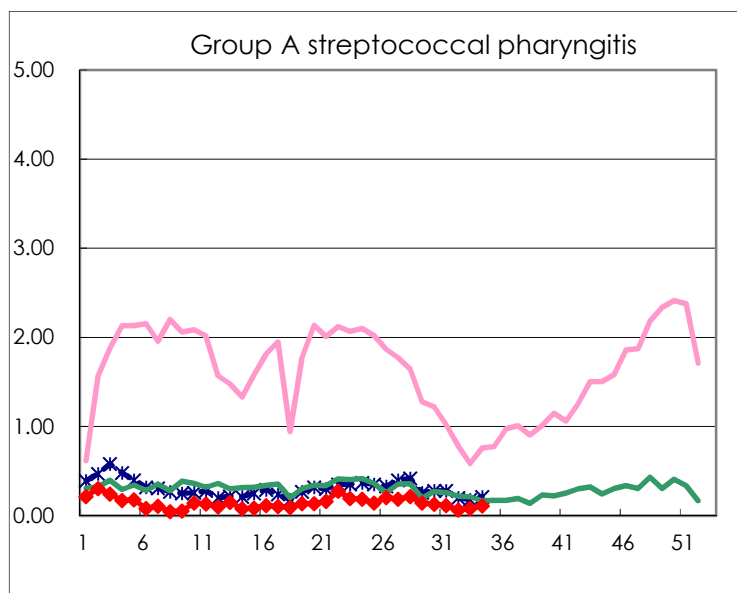
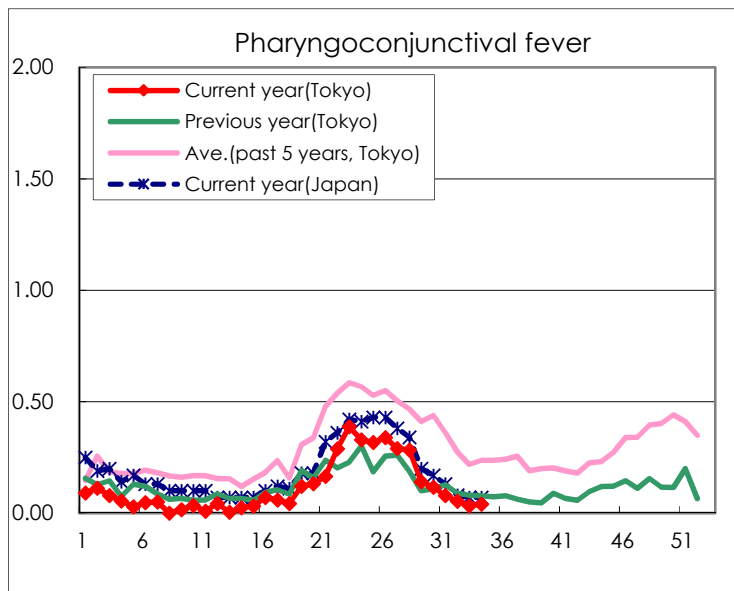
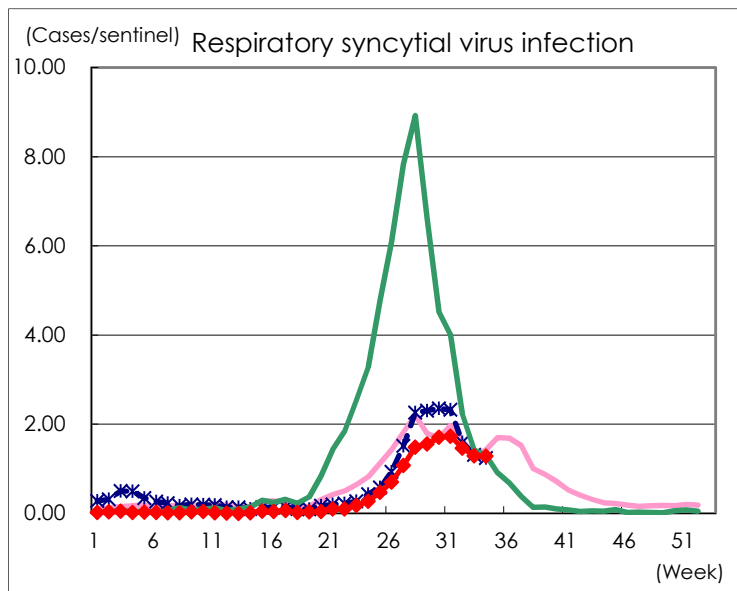
Category	Diseases	Tokyo					Japan	
		31st	32nd	33rd	34th	Cum 2022	34th	Cum 2022
V	Amebiasis	3		2	3	86	10	346
	Viral hepatitis(excluding hepatitis A and E)	2	1		1	26	2	135
	CRE infection	2	4	1	7	130	23	1,097
	Acute Flaccid Paralysis (excluding Acute poliomyelitis)							15
	Acute encephalitis(excluding JE and WNE)	5	1	2	1	19	4	224
	Cryptosporidiosis					2		6
	Creutzfeldt-Jakob disease		1			12		112
	Severe invasive streptococcal infections(TSLS)	1		1	2	73	8	483
	Acquired immunodeficiency syndrome (AIDS)	8	4	3	2	183	8	563
	Giardiasis			1		11		25
	Invasive <i>Haemophilus influenzae</i> disease	1		1		12	2	116
	Invasive meningococcal disease							5
	Invasive pneumococcal disease	3	2	4	3	95	10	783
	Varicella (limited to hospitalized case)					31		204
	Congenital rubella syndrome							
	Syphilis	91	64	84	88	2,288	196	7,824
	Disseminated cryptococcosis	1	1	1		11		94
	Tetanus		1	1		4		58
	Vancomycin-resistant <i>S. aureus</i> infection							
	Vancomycin-resistant <i>Enterococcus</i> infection					4	1	98
	Pertussis	3	2	2	1	30	2	318
	Rubella					1		6
Measles						1	6	
MDRA infection					2		8	

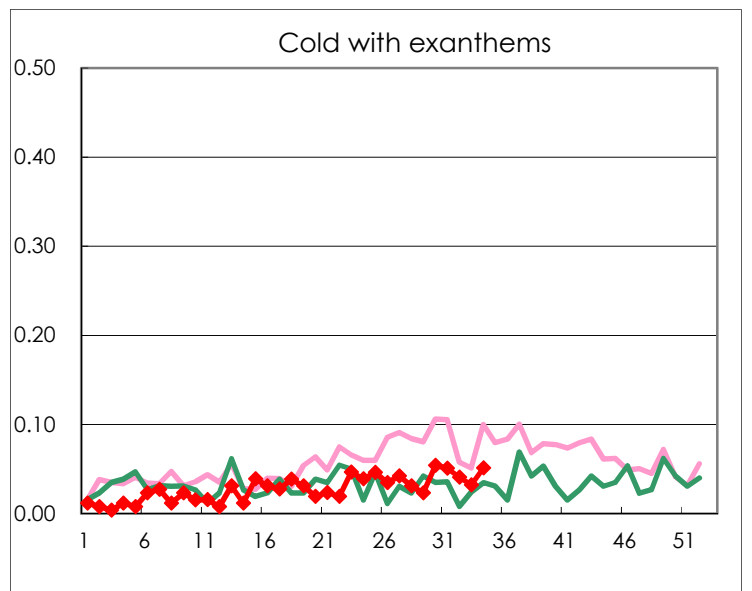
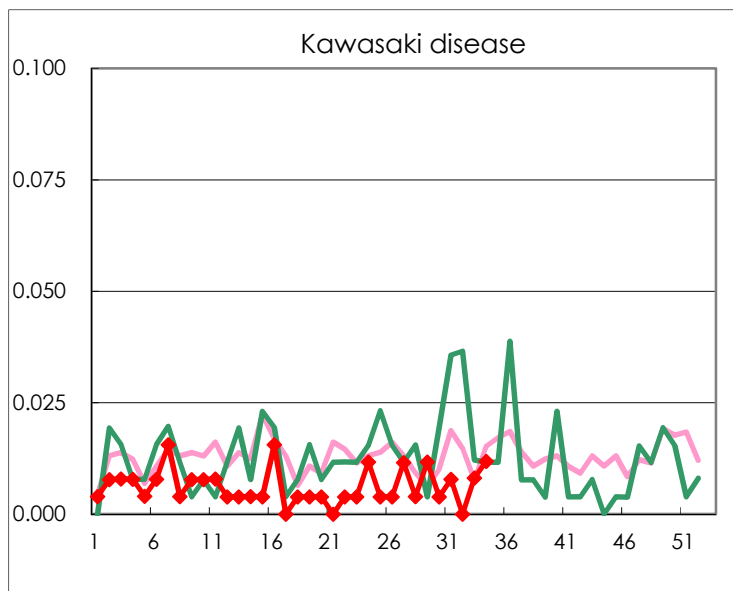
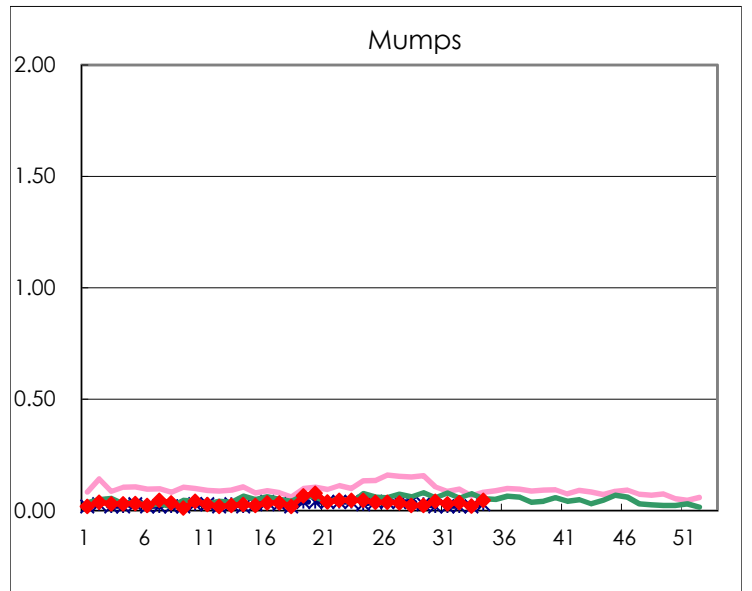
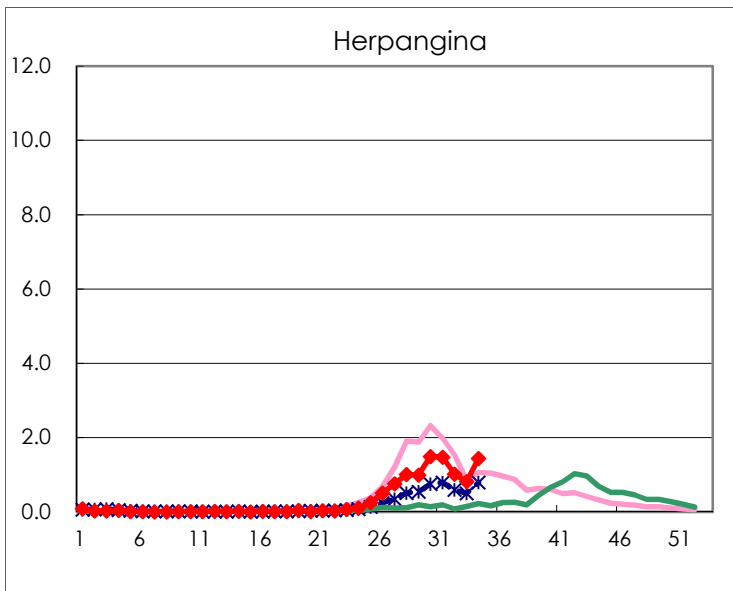
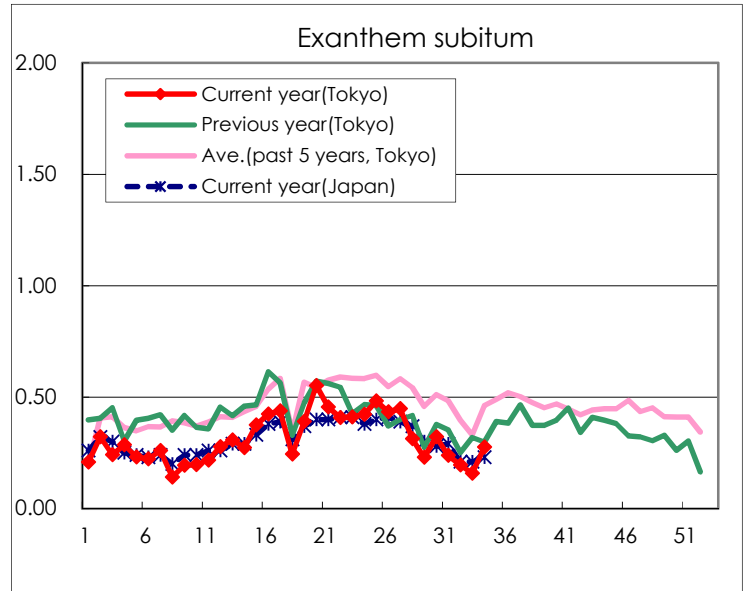
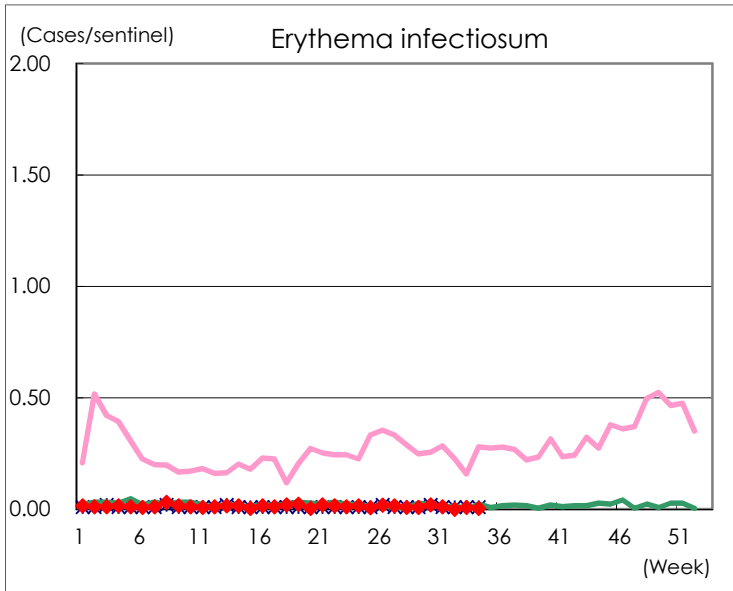
Number of patients with the diseases to be reported  
by the designated clinics and hospitals

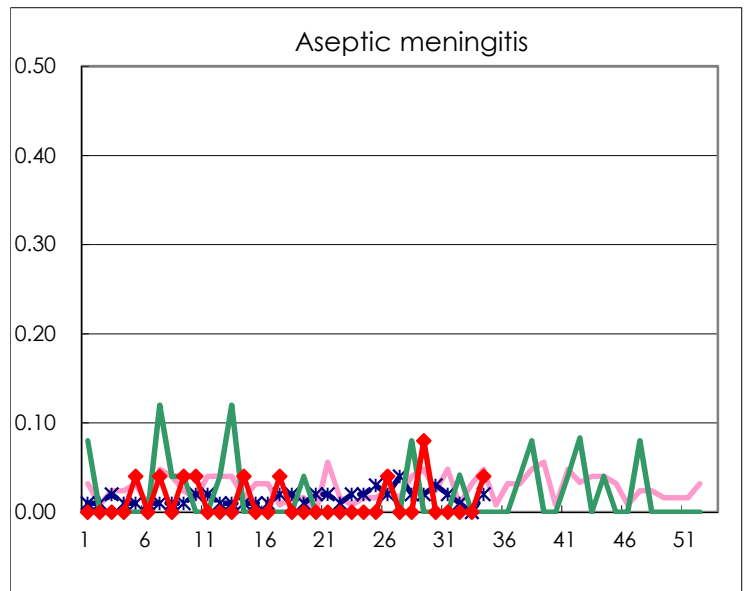
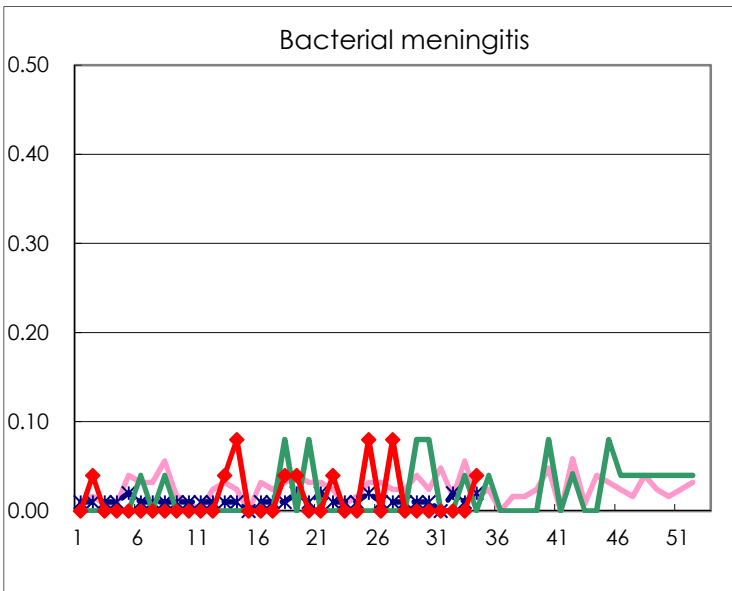
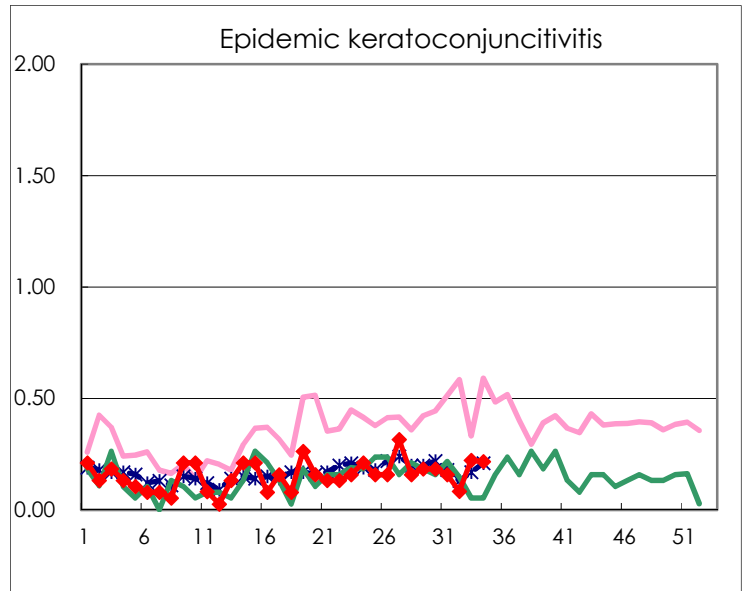
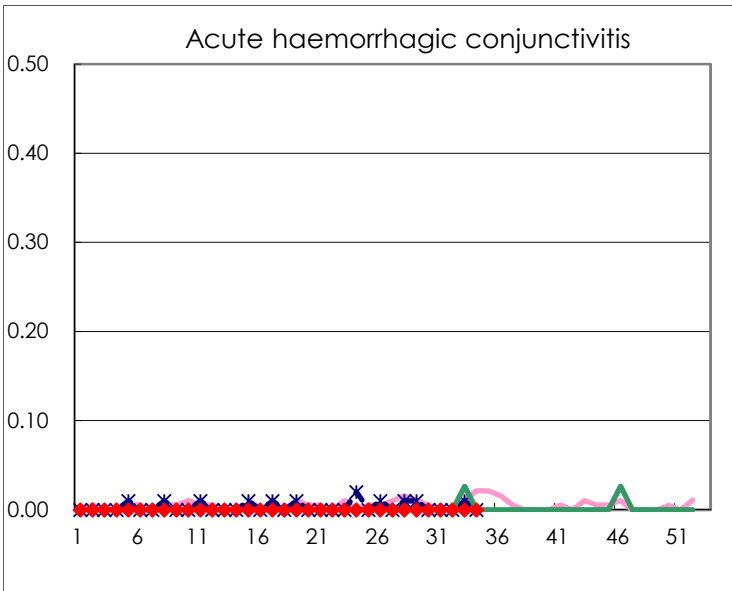
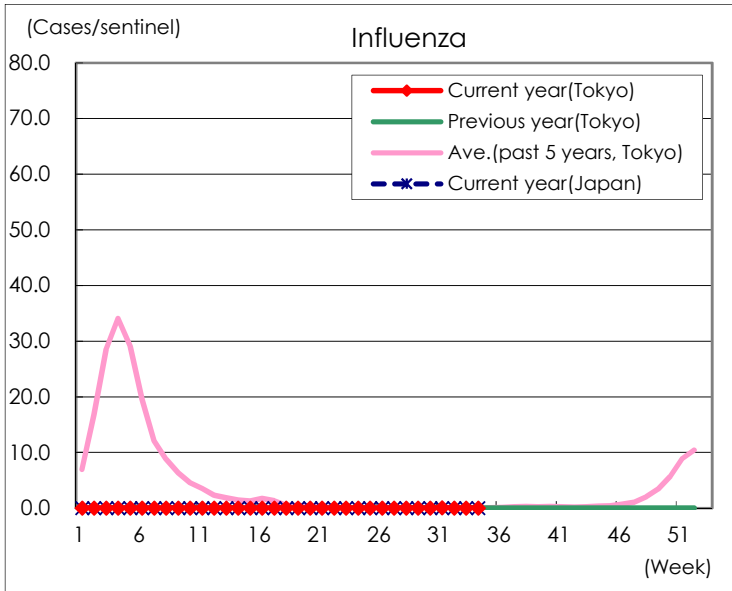
Diseases	Tokyo				
	31st	32nd	33rd	34th	/sentinel
Respiratory syncytial virus infection	441	358	319	325	1.28
Pharyngoconjunctival fever	20	13	8	10	0.04
Group A streptococcal pharyngitis	29	16	20	28	0.11
Infectious gastroenteritis	544	422	378	498	1.97
Chickenpox	11	13	11	12	0.05
Hand, foot, and mouth disease	1,259	1,144	953	1,298	5.13
Erythema infectiosum	3		2	1	0.00
Exanthem subitum	61	48	39	70	0.28
Herpangina	375	250	201	363	1.43
Mumps	8	9	5	12	0.05
Kawasaki disease	2		2	3	0.01
Cold with exanthems	13	10	8	13	0.05
Influenza	23	13	8	5	0.01
Acute hemorrhagic conjunctivitis					
Epidemic keratoconjunctivitis	6	3	8	8	0.22
Bacterial meningitis				1	0.04
Aseptic meningitis				1	0.04
Mycoplasma pneumonia					
Chlamydial pneumonia (excluding psittacosis)	2				
Infectious gastroenteritis (only by Rotavirus)					
Influenza-Associated Hospitalizations	1				

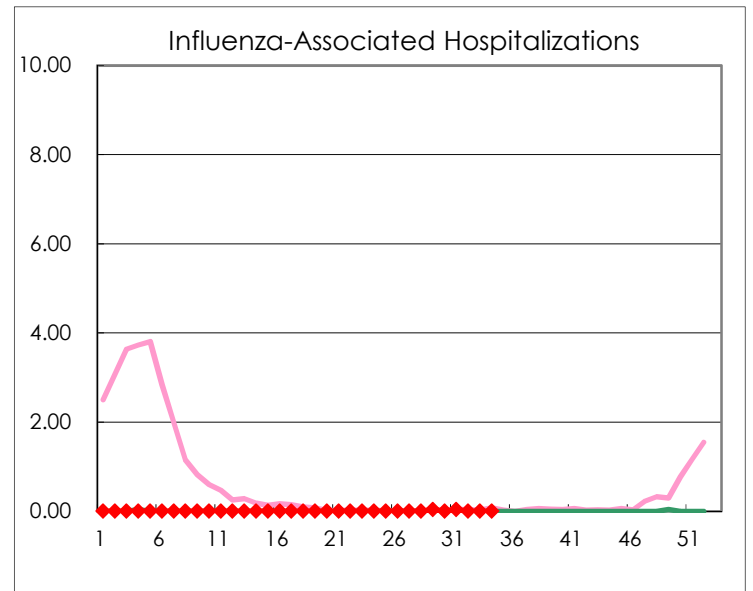
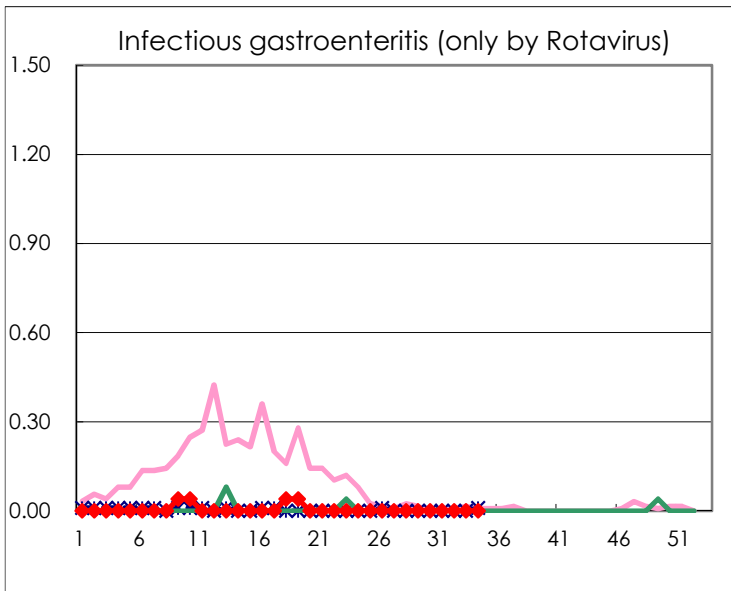
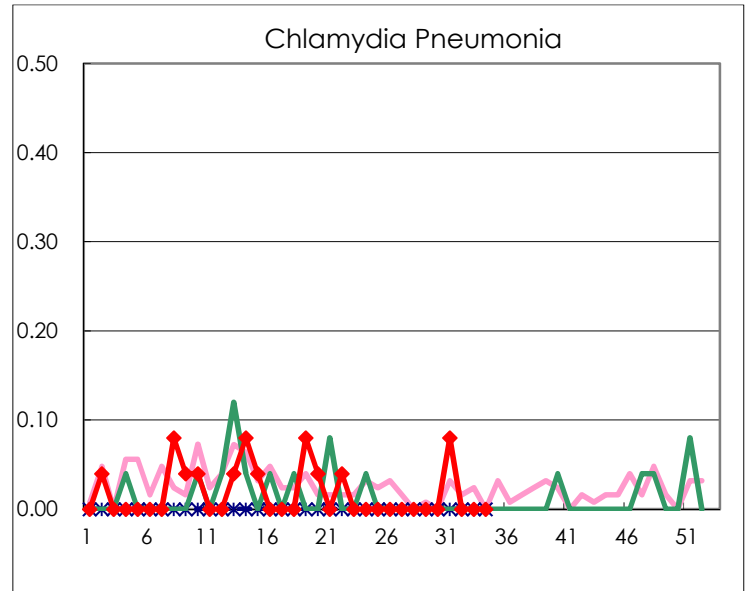
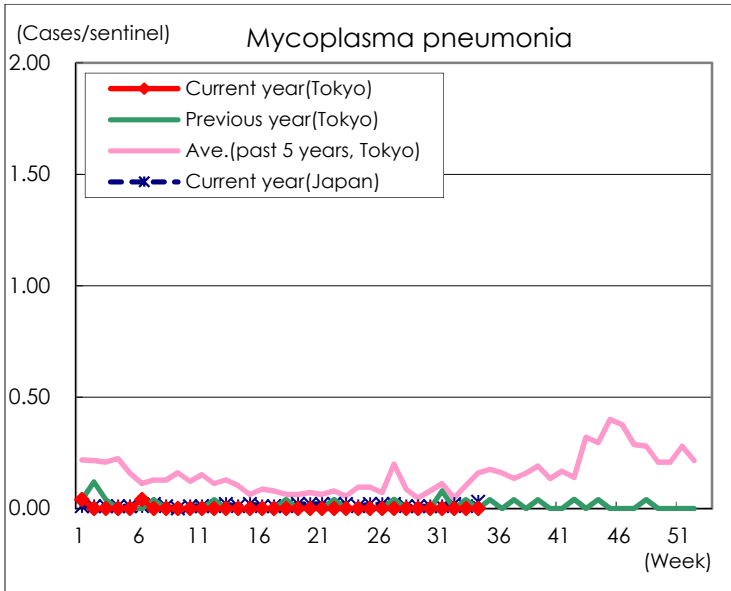
( Blank means 0. )

# Disease Trend Graph (weekly reported cases per sentinel in comparison)









Number of sentinel facilities for weekly reporting		
Types of sentinels	Number of sentinels	Sentinels having reported
Pediatric	264	253
Influenza	419	404
Ophthalmic	39	37
Specially-designated	25	25