

---

INFECTIOUS DISEASES WEEKLY REPORT

# TOKYO IDWR

Tokyo Metropolitan Infectious Disease Surveillance Center

## 22 September 2022 / Number 37 ( 9/12 ~ 9/18 )

### Surveillance System in Tokyo, Japan

The infectious diseases which all physicians must report  
All physicians must report to health centers the incidence of the diseases which are shown at page one. Health centers electronically report the individual cases to Tokyo Metropolitan Infectious Disease Surveillance Center.

The infectious diseases required to be reported by the sentinels  
The numbers of patients who visit the sentinel clinics or hospitals during a week are reported to health centers in Tokyo. And they electronically report the numbers to Tokyo Metropolitan Infectious Disease Surveillance Center. We have about 500 sentinel clinics and hospitals in Tokyo.

Tokyo Metropolitan Institute of Public Health

TEL:81-3-3363-3213 FAX:81-3-5332-7365

e-mail:tmiph@section.metro.tokyo.jp

URL:idsc.tmiph.metro.tokyo.lg.jp/

---

Number of patients with the diseases which all physicians must report

Category	Diseases	Tokyo					Japan	
		34th	35th	36th	37th	Cum 2022	37th	Cum 2022
I	Ebola hemorrhagic fever							
	Crimean-Congo hemorrhagic fever							
	Smallpox							
	South American hemorrhagic fever							
	Plague							
	Marburg disease							
	Lassa fever							
II	Acute poliomyelitis							
	Tuberculosis	47	32	37	34	1,438	213	10,346
	Diphtheria							
	Severe Acute Respiratory Syndrome(SARS)							
	Middle East Respiratory Syndrome (MERS)							
	Avian influenza H5N1							
	Avian influenza H7N9							
III	Cholera					1		1
	Shigellosis					2		14
	Enterohemorrhagic Escherichia coli infection	19	7	17	9	264	105	2,404
	Typhoid fever		1			5		11
	Paratyphoid fever		1			2		7
IV	Hepatitis E		2	3	3	96	8	315
	West Nile fever							
	Hepatitis A					4	1	57
	Echinococcosis					3		17
	Yellow fever							
	Psittacosis					1		8
	Omsk hemorrhagic fever							
	Relapsing fever							13
	Kyasanur forest disease							
	Q fever							
	Rabies							
	Coccidioidomycosis							1
	Monkeypox					2		3
	Zika virus infection							
	Severe Fever with Thrombocytopenia Syndrome				1	1	3	98
	Hemorrhagic fever with renal syndrome							
	Western equine encephalitis							
	Tick-borne encephalitis							
	Anthrax							
	Chikungunya fever					1		4
	Scrub typhus(Tsutsugamushi disease)					3		98
	Dengue fever		1	1		8	2	48
	Eastern equine encephalitis							
	Avian influenza (excluding H5N1 and H7N9)							
	Nipah virus infection							
	Japanese spotted fever						18	260
	Japanese encephalitis							1
	Hantavirus pulmonary syndrome							
	Herpes B virus infection							
	Glanders							
	Brucellosis							
	Venezuelan equine encephalitis							
	Hendra virus infection							
Epidemic typhus								
Botulism					1		1	
Malaria					4	2	18	
Tularemia								
Lyme disease					2		11	
Lyssavirus infection(excluding rabies)								
Rift valley fever								
Melioidosis							2	
Legionellosis	1	2	1	7	77	73	1,500	
Leptospirosis			1		2	2	16	
Rocky mountain spotted fever								

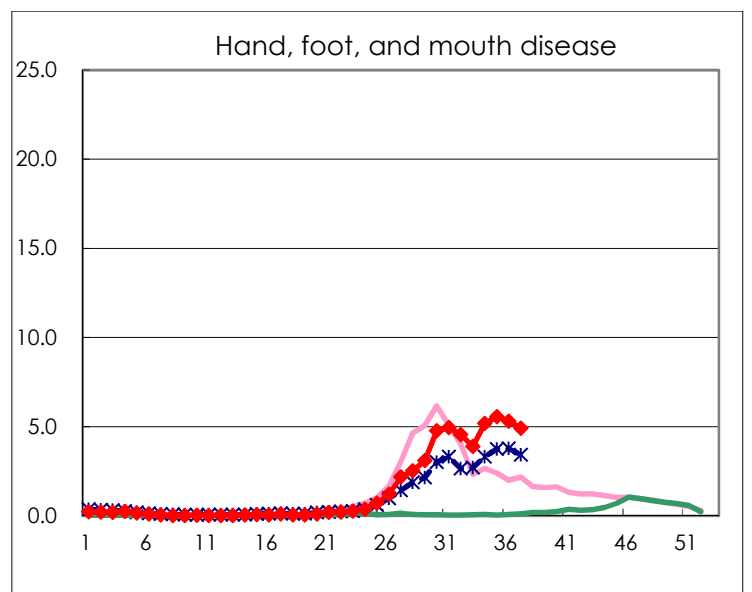
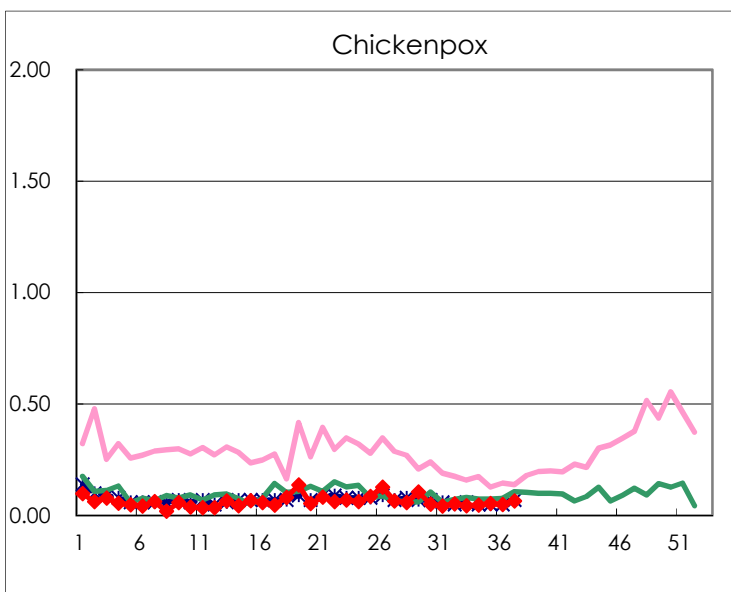
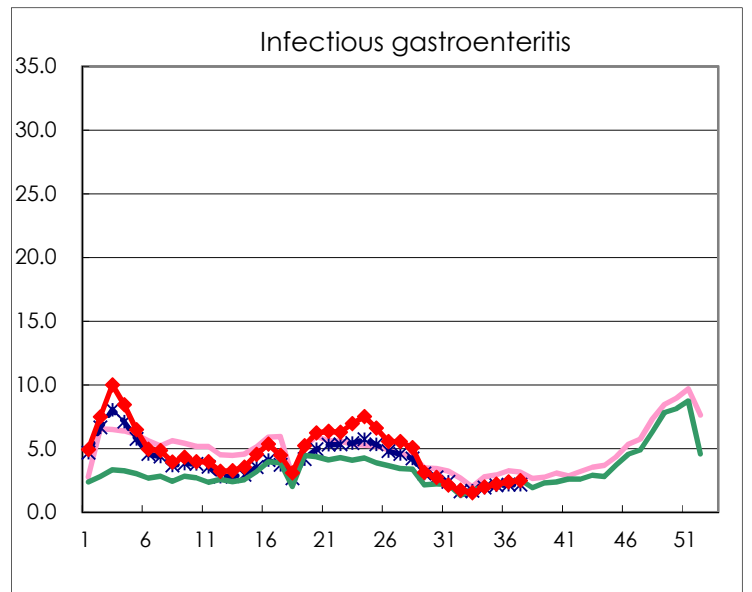
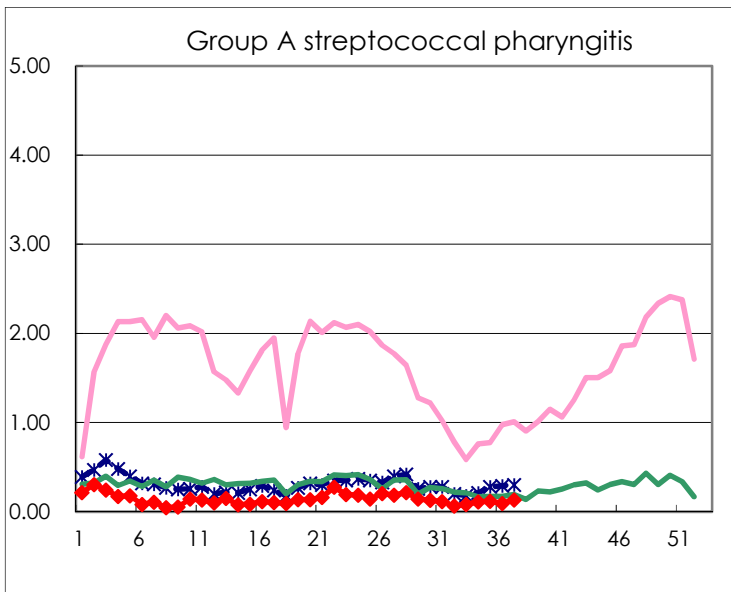
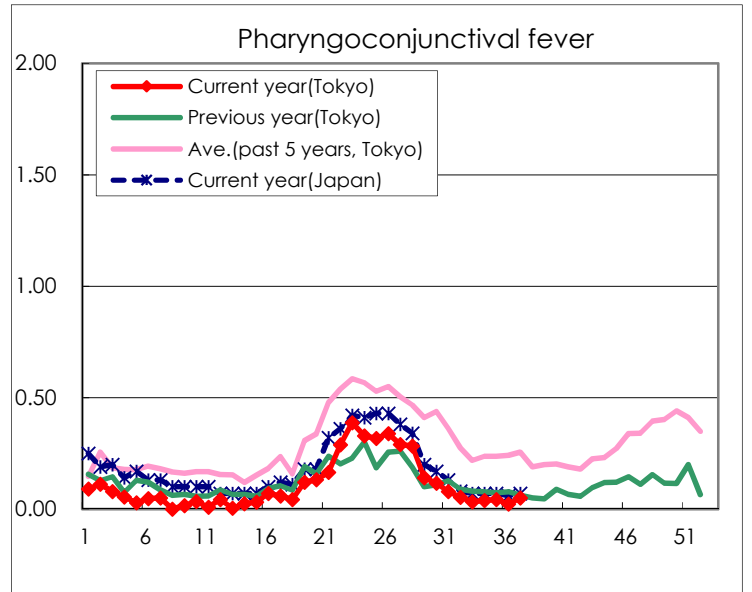
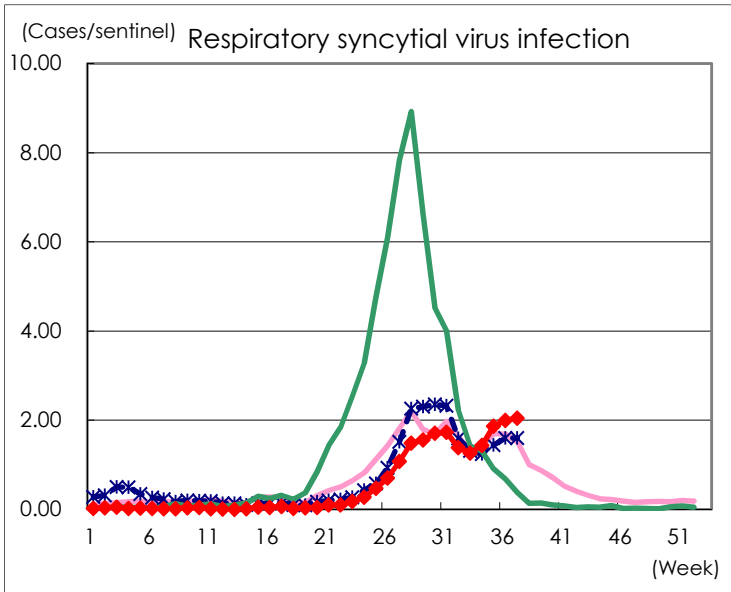
Category	Diseases	Tokyo					Japan	
		34th	35th	36th	37th	Cum 2022	37th	Cum 2022
V	Amebiasis	3	4		1	92	7	379
	Viral hepatitis(excluding hepatitis A and E)	1	1			27	2	148
	CRE infection	7	6	3	5	146	34	1,245
	Acute Flaccid Paralysis (excluding Acute poliomyelitis)						1	19
	Acute encephalitis(excluding JE and WNE)	1	2			21	6	259
	Cryptosporidiosis					2		6
	Creutzfeldt-Jakob disease			1		14	3	121
	Severe invasive streptococcal infections(TSLS)	2	2		1	77	8	529
	Acquired immunodeficiency syndrome (AIDS)	2	3	2	3	191	5	607
	Giardiasis					11		27
	Invasive <i>Haemophilus influenzae</i> disease					12	1	123
	Invasive meningococcal disease							5
	Invasive pneumococcal disease	3	3		4	102	9	852
	Varicella (limited to hospitalized case)		2			33	6	223
	Congenital rubella syndrome							
	Syphilis	90	76	85	69	2,528	144	8,746
	Disseminated cryptococcosis		1			12	1	101
	Tetanus					4	3	67
	Vancomycin-resistant <i>S. aureus</i> infection							
	Vancomycin-resistant <i>Enterococcus</i> infection				1	5	1	106
	Pertussis	1	2	1	1	35	6	351
Rubella		1			2		10	
Measles							4	
MDRA infection					2		11	

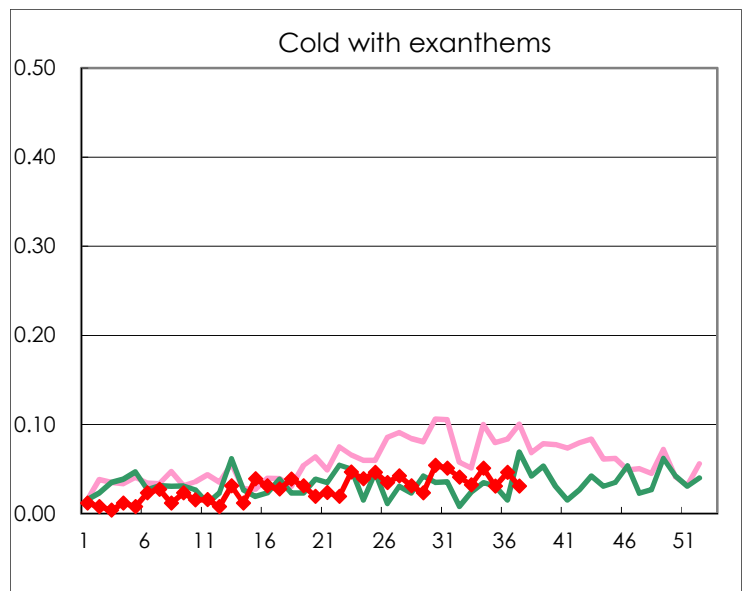
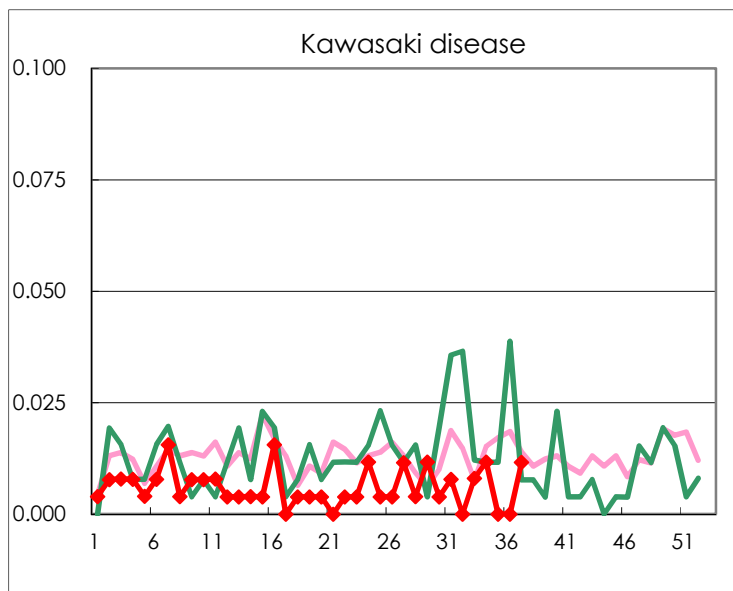
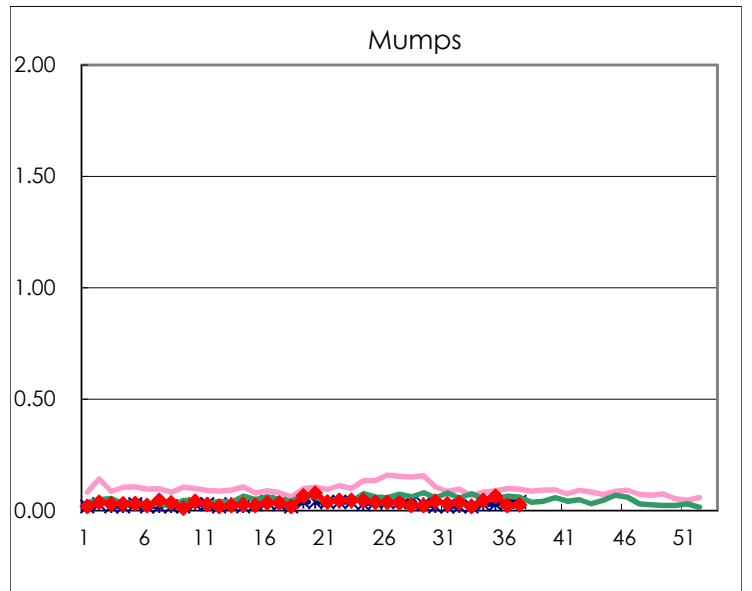
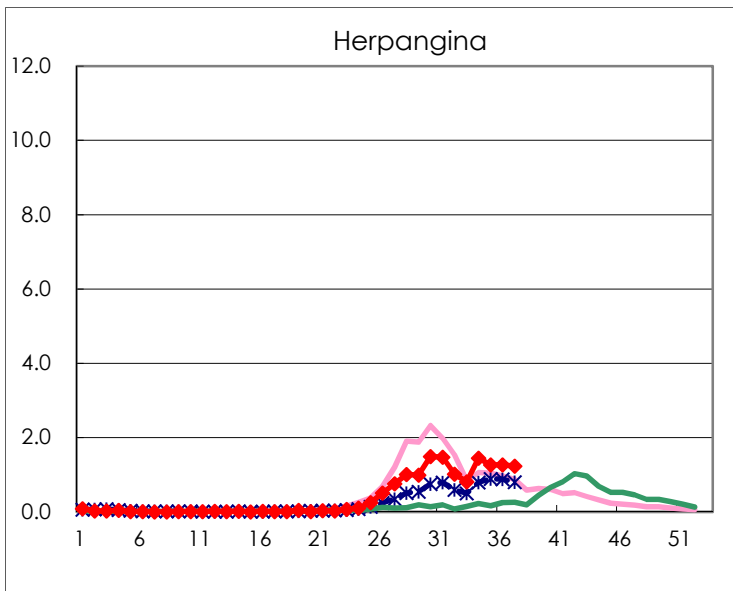
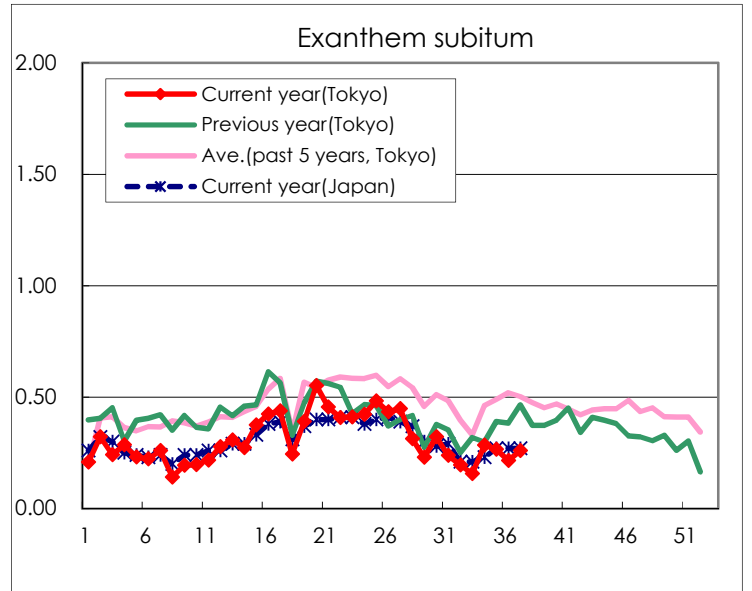
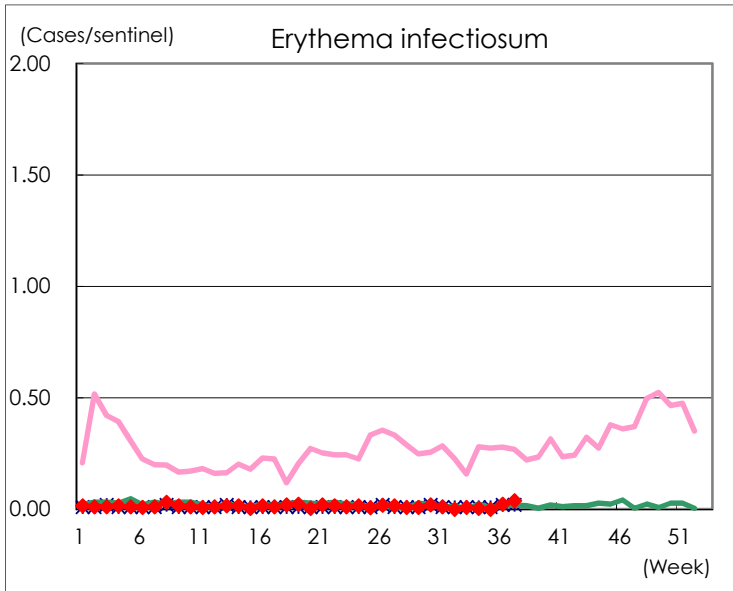
Number of patients with the diseases to be reported  
by the designated clinics and hospitals

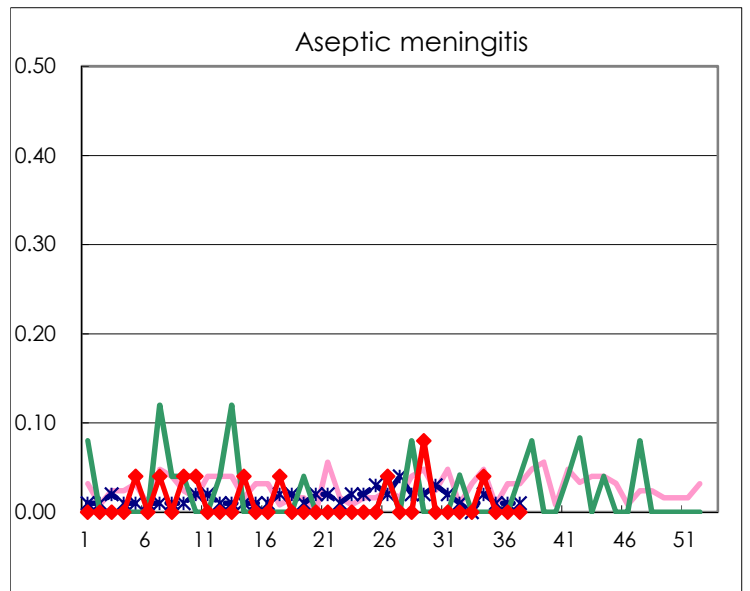
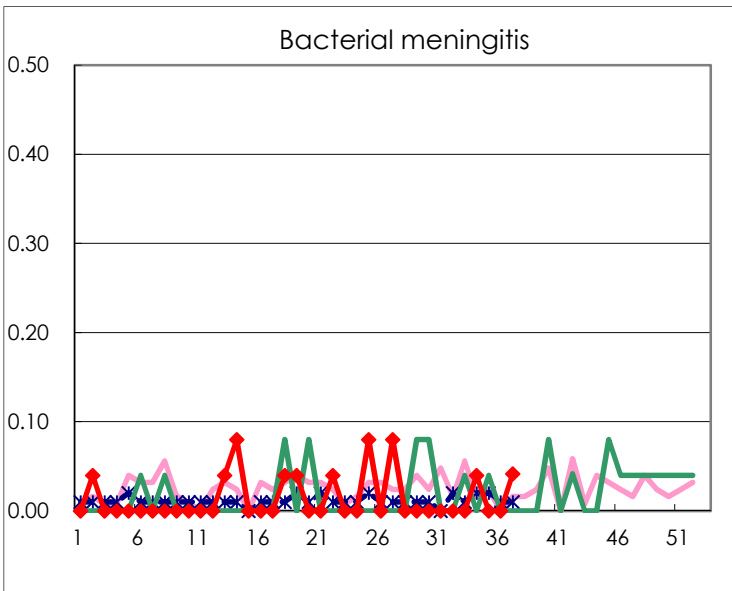
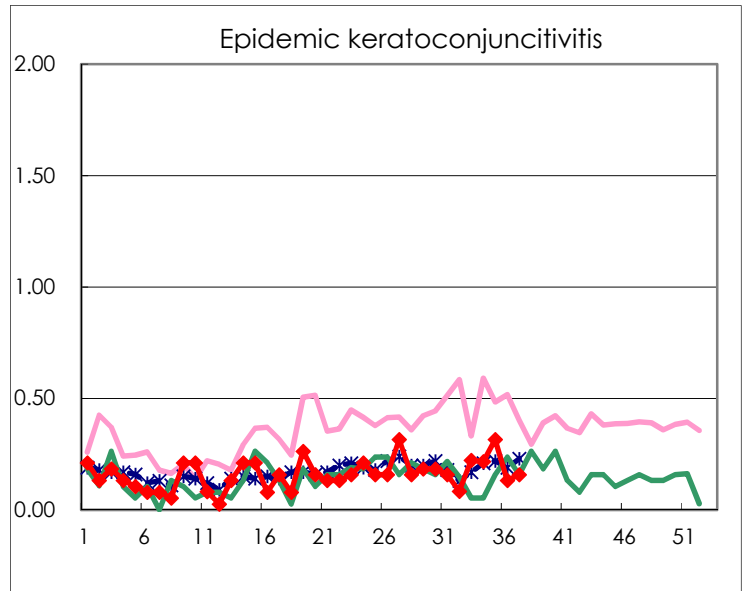
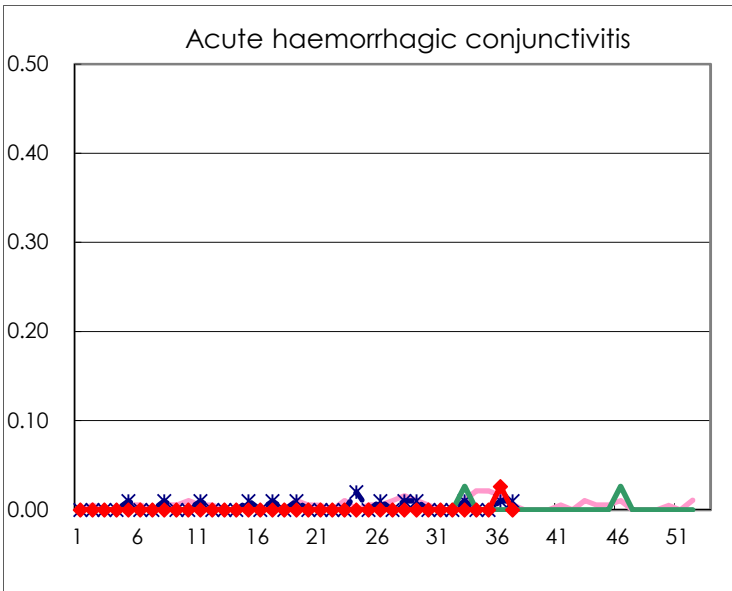
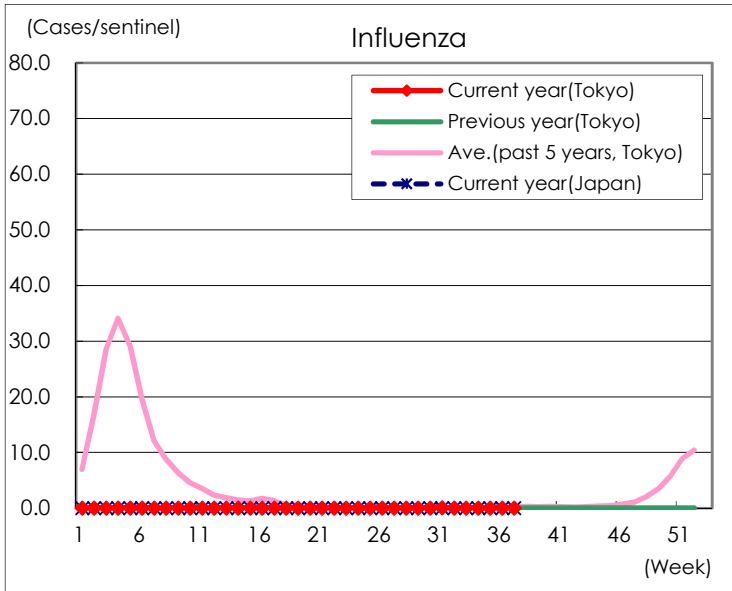
Diseases	Tokyo				
	34th	35th	36th	37th	/sentinel
Respiratory syncytial virus infection	367	482	516	528	2.05
Pharyngoconjunctival fever	10	11	6	13	0.05
Group A streptococcal pharyngitis	28	31	24	34	0.13
Infectious gastroenteritis	504	571	617	639	2.48
Chickenpox	12	14	13	17	0.07
Hand, foot, and mouth disease	1,324	1,440	1,376	1,268	4.91
Erythema infectiosum	1		6	10	0.04
Exanthem subitum	73	69	56	67	0.26
Herpangina	370	327	329	317	1.23
Mumps	12	17	6	7	0.03
Kawasaki disease	3			3	0.01
Cold with exanthems	13	8	12	8	0.03
Influenza	5	8	7	8	0.02
Acute hemorrhagic conjunctivitis			1		
Epidemic keratoconjunctivitis	8	12	5	6	0.16
Bacterial meningitis	1			1	0.04
Aseptic meningitis	1				
<i>Mycoplasma pneumoniae</i>			1		
Chlamydial pneumonia (excluding psittacosis)				2	0.08
Infectious gastroenteritis (only by Rotavirus)					
Influenza-Associated Hospitalizations					

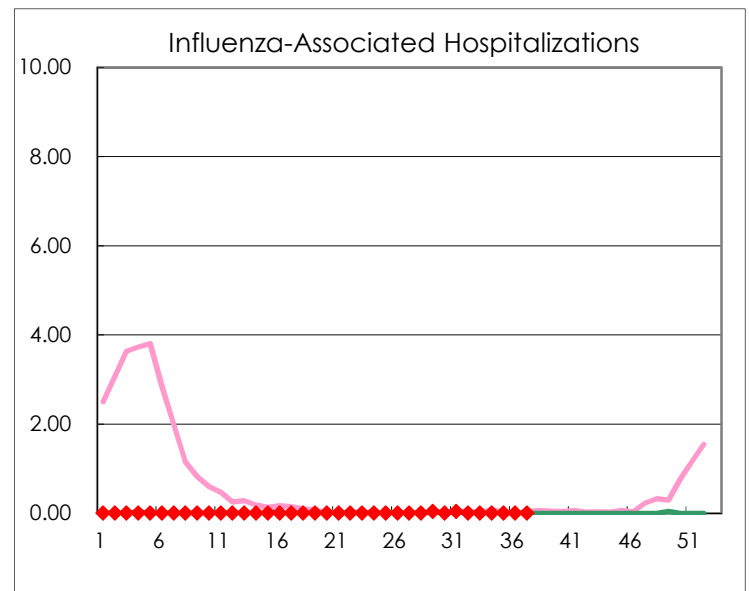
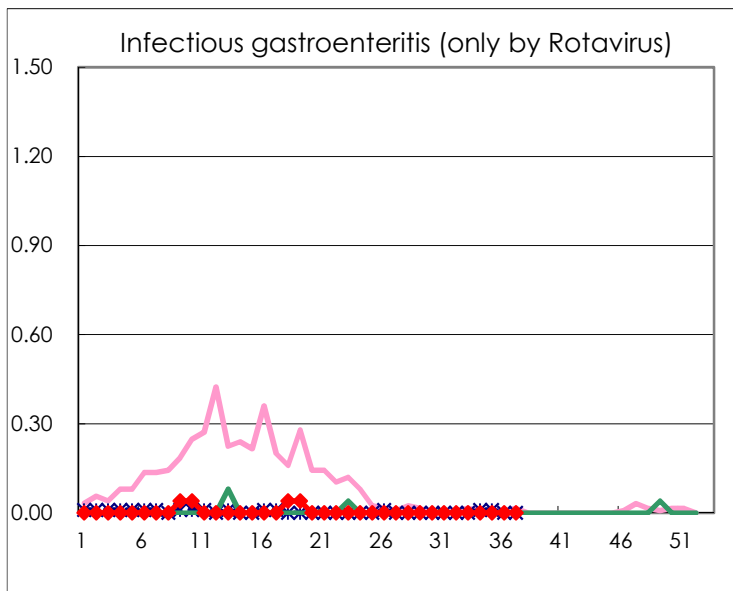
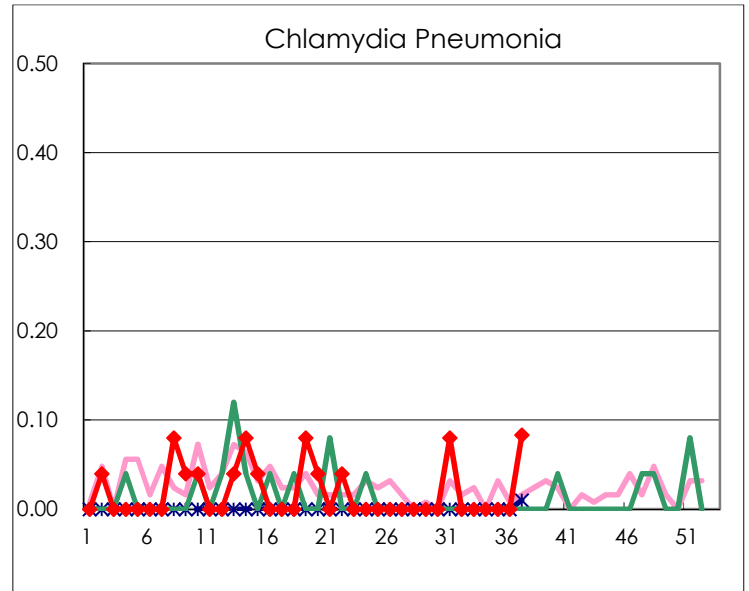
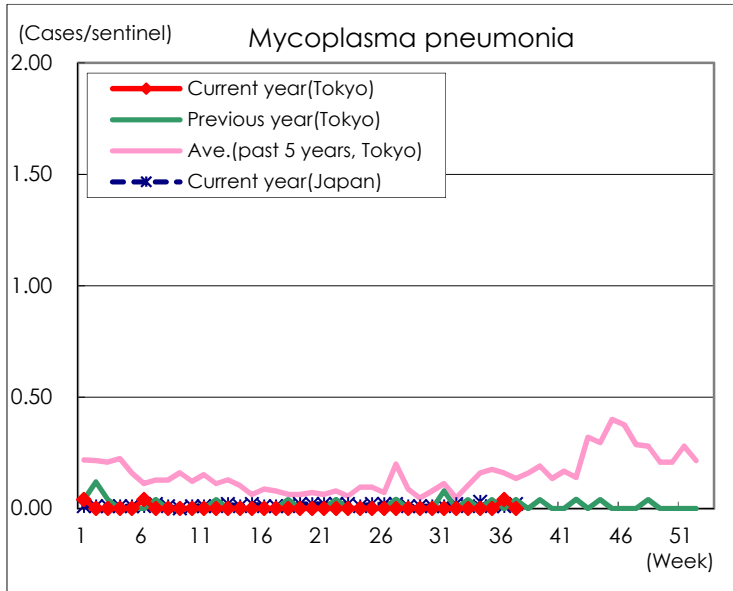
( Blank means 0. )

# Disease Trend Graph (weekly reported cases per sentinel in comparison)









Number of sentinel facilities for weekly reporting		
Types of sentinels	Number of sentinels	Sentinels having reported
Pediatric	264	258
Influenza	419	406
Ophthalmic	39	38
Specially-designated	25	24