
INFECTIOUS DISEASES WEEKLY REPORT

TOKYO IDWR

Tokyo Metropolitan Infectious Disease Surveillance Center

4 November 2022 / Number 43 (10/24 ~ 10/30)

Surveillance System in Tokyo, Japan

The infectious diseases which all physicians must report
All physicians must report to health centers the incidence of the diseases which are shown at page one. Health centers electronically report the individual cases to Tokyo Metropolitan Infectious Disease Surveillance Center.

The infectious diseases required to be reported by the sentinels
The numbers of patients who visit the sentinel clinics or hospitals during a week are reported to health centers in Tokyo. And they electronically report the numbers to Tokyo Metropolitan Infectious Disease Surveillance Center. We have about 500 sentinel clinics and hospitals in Tokyo.

Tokyo Metropolitan Institute of Public Health

TEL:81-3-3363-3213 FAX:81-3-5332-7365

e-mail:tmiph@section.metro.tokyo.jp

URL:idsc.tmiph.metro.tokyo.lg.jp/

Number of patients with the diseases which all physicians must report

Category	Diseases	Tokyo					Japan	
		40th	41st	42nd	43rd	Cum 2022	43rd	Cum 2022
I	Ebola hemorrhagic fever							
	Crimean-Congo hemorrhagic fever							
	Smallpox							
	South American hemorrhagic fever							
	Plague							
	Marburg disease							
	Lassa fever							
II	Acute poliomyelitis							
	Tuberculosis	29	33	45	32	1,655	201	12,005
	Diphtheria							
	Severe Acute Respiratory Syndrome(SARS)							
	Middle East Respiratory Syndrome (MERS)							
	Avian influenza H5N1							
	Avian influenza H7N9							
III	Cholera					1		1
	Shigellosis					2		14
	Enterohemorrhagic Escherichia coli infection	12	4	9	6	325	62	2,960
	Typhoid fever	1				6		15
	Paratyphoid fever	1				3		8
IV	Hepatitis E		1	1	2	110	5	356
	West Nile fever							
	Hepatitis A					5		60
	Echinococcosis					3		20
	Yellow fever							
	Psittacosis					2		9
	Omsk hemorrhagic fever							
	Relapsing fever						3	20
	Kyasanur forest disease							
	Q fever							
	Rabies							
	Coccidioidomycosis							1
	Monkeypox	1				5		6
	Zika virus infection							
	Severe Fever with Thrombocytopenia Syndrome					1	3	112
	Hemorrhagic fever with renal syndrome							
	Western equine encephalitis							
	Tick-borne encephalitis							
	Anthrax							
	Chikungunya fever					1		5
	Scrub typhus(Tsutsugamushi disease)				1	4	4	110
	Dengue fever	1	1	2	4	19	8	80
	Eastern equine encephalitis							
	Avian influenza (excluding H5N1 and H7N9)							
	Nipah virus infection							
	Japanese spotted fever						16	413
	Japanese encephalitis							5
	Hantavirus pulmonary syndrome							
	Herpes B virus infection							
	Glanders							
	Brucellosis							1
	Venezuelan equine encephalitis							
	Hendra virus infection							
Epidemic typhus								
Botulism					1		1	
Malaria					6		24	
Tularemia								
Lyme disease					2		13	
Lyssavirus infection(excluding rabies)								
Rift valley fever								
Melioidosis							2	
Legionellosis	5	1	2	4	98	45	1,874	
Leptospirosis					4		36	
Rocky mountain spotted fever								

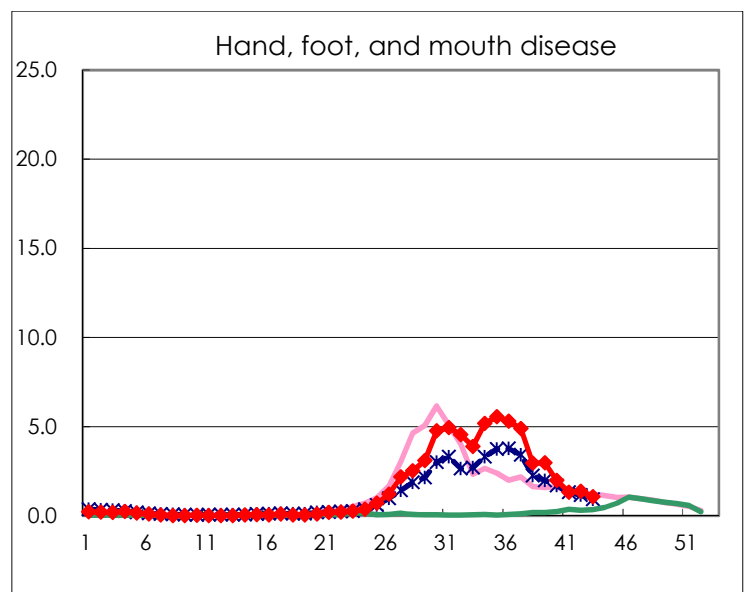
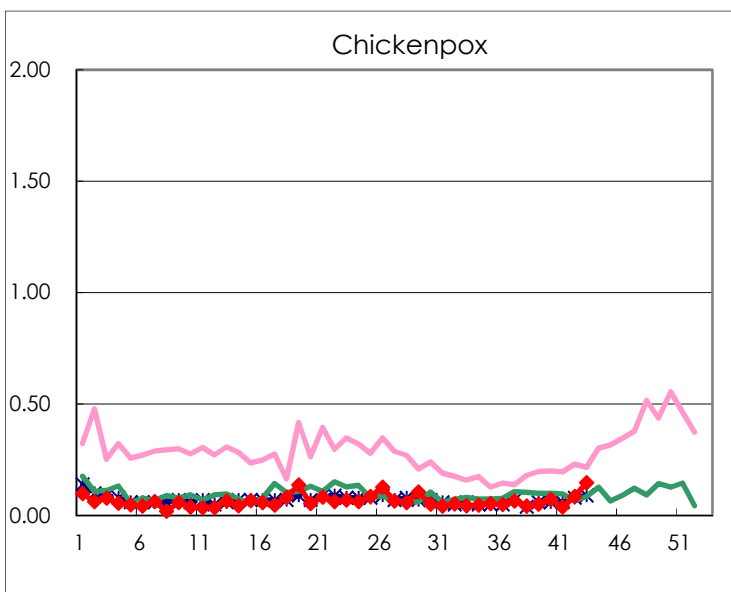
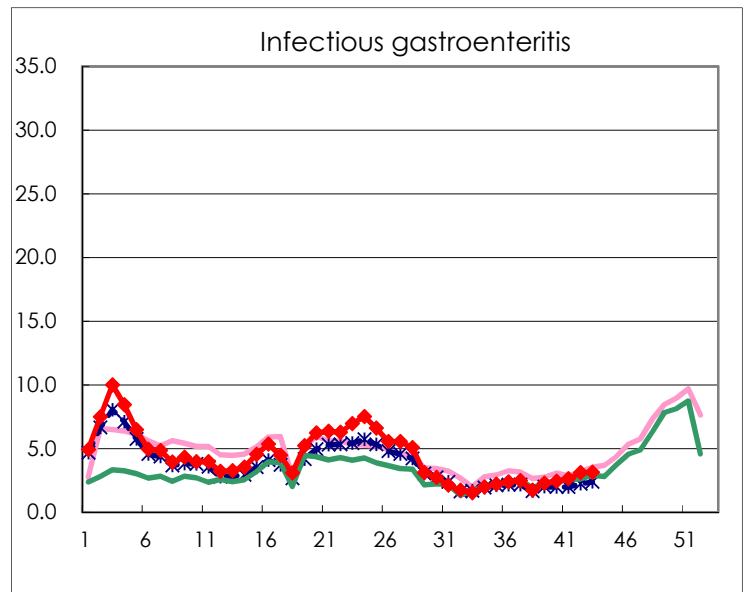
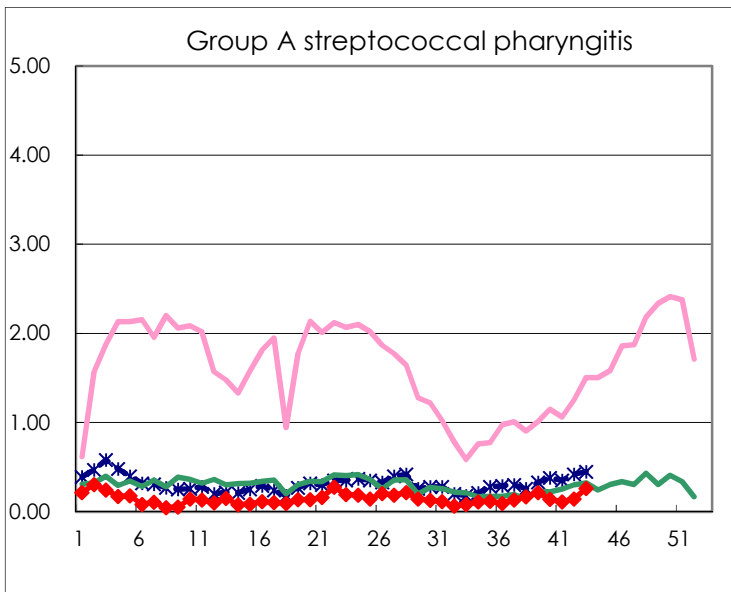
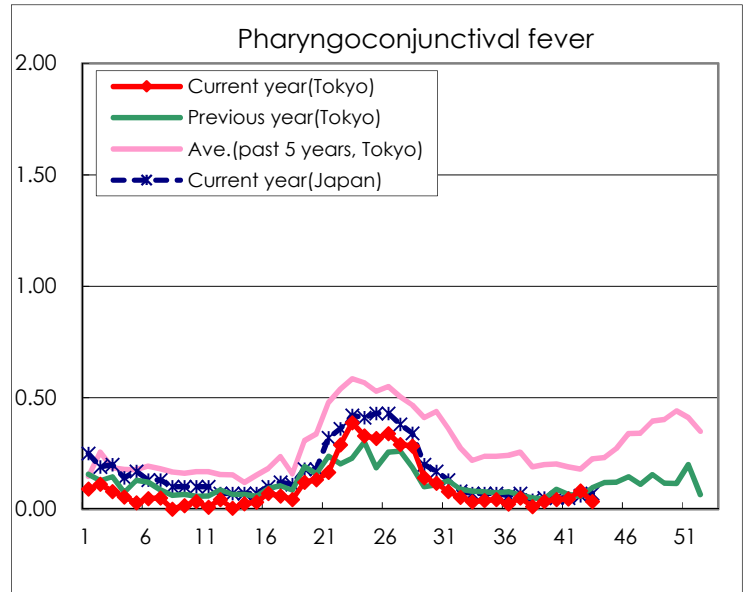
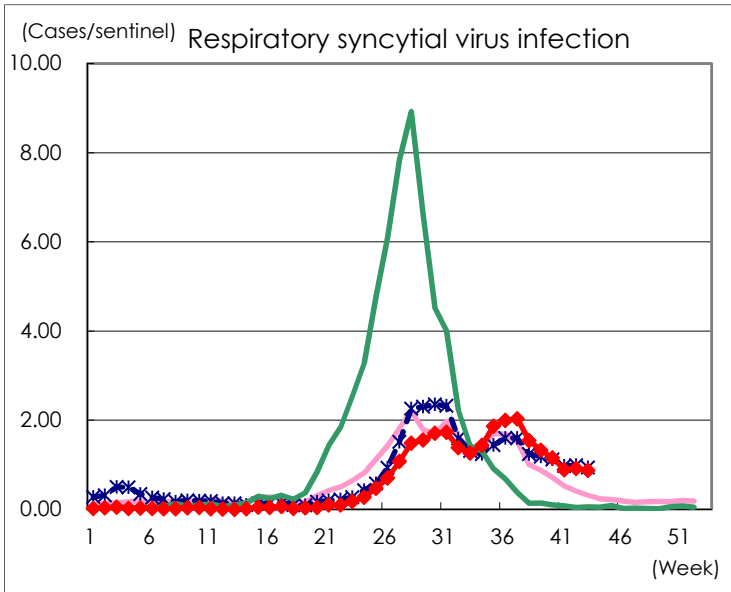
Category	Diseases	Tokyo					Japan	
		40th	41st	42nd	43rd	Cum 2022	43rd	Cum 2022
V	Amebiasis	2	1	1	1	102	7	442
	Viral hepatitis(excluding hepatitis A and E)	1	1			29	3	163
	CRE infection	6	3	2	5	170	29	1,581
	Acute Flaccid Paralysis (excluding Acute poliomyelitis)			2	1	4	1	26
	Acute encephalitis(excluding JE and WNE)	1				27	5	311
	Cryptosporidiosis					2		6
	Creutzfeldt-Jakob disease	1				16	2	141
	Severe invasive streptococcal infections(TSLS)		1	2	3	87	9	597
	Acquired immunodeficiency syndrome (AIDS)	5	5	3	5	229	13	723
	Giardiasis					11	1	31
	Invasive <i>Haemophilus influenzae</i> disease	1		1		15	4	148
	Invasive meningococcal disease							5
	Invasive pneumococcal disease	1	1	2	1	110	28	999
	Varicella (limited to hospitalized case)	1		2	2	41	8	263
	Congenital rubella syndrome							
	Syphilis	76	77	92	63	2,983	169	10,465
	Disseminated cryptococcosis					13	2	122
	Tetanus					4		87
	Vancomycin-resistant <i>S. aureus</i> infection							
	Vancomycin-resistant <i>Enterococcus</i> infection					5	3	122
	Pertussis	1	1			42	9	394
Rubella					2		11	
Measles							6	
MDRA infection					2		11	

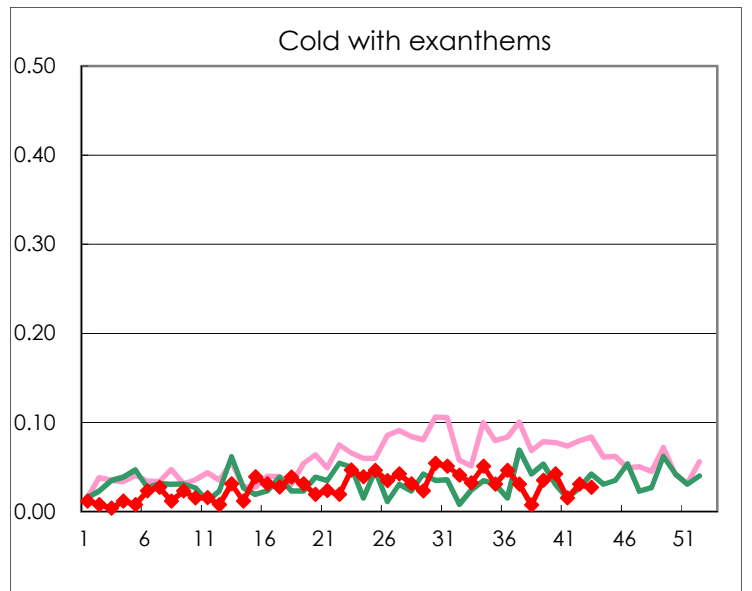
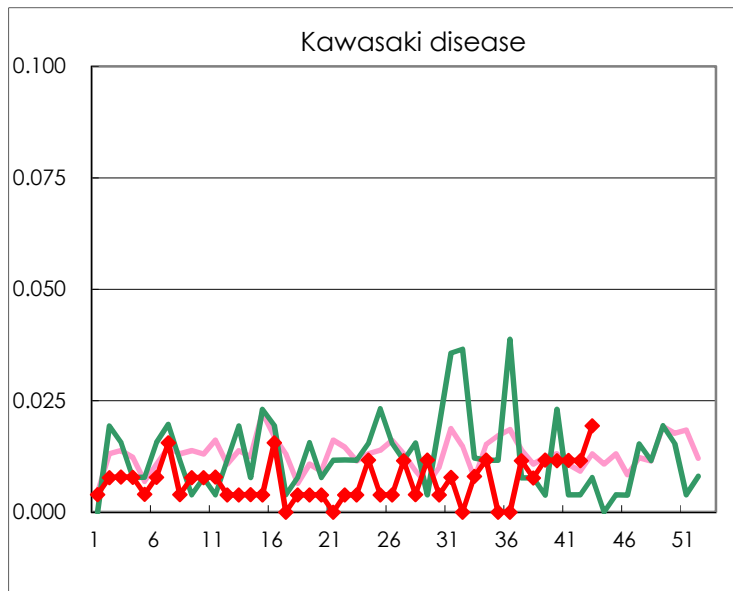
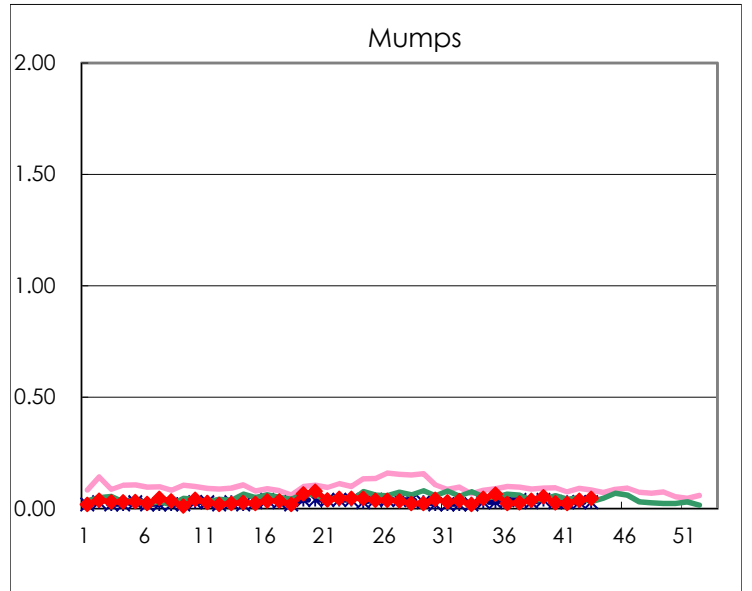
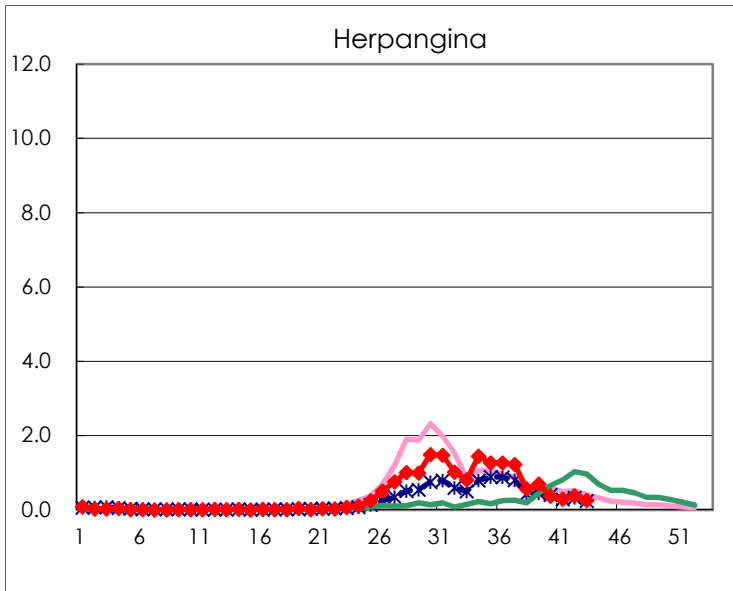
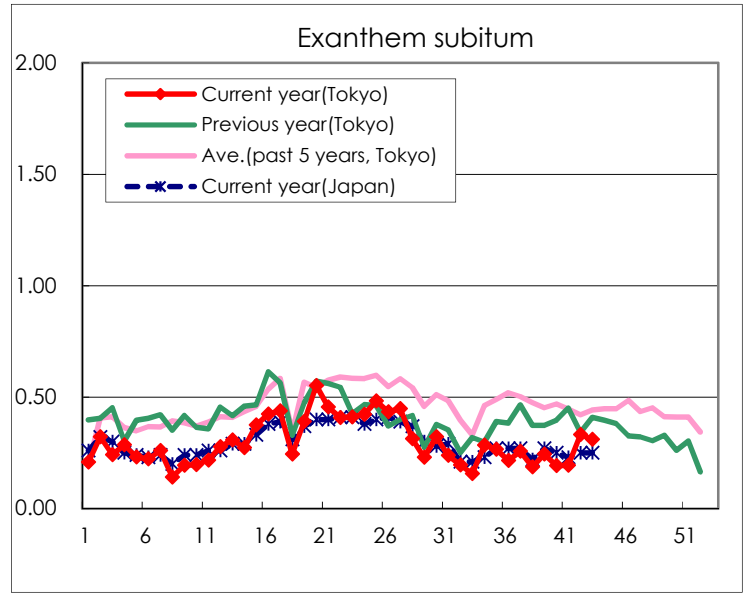
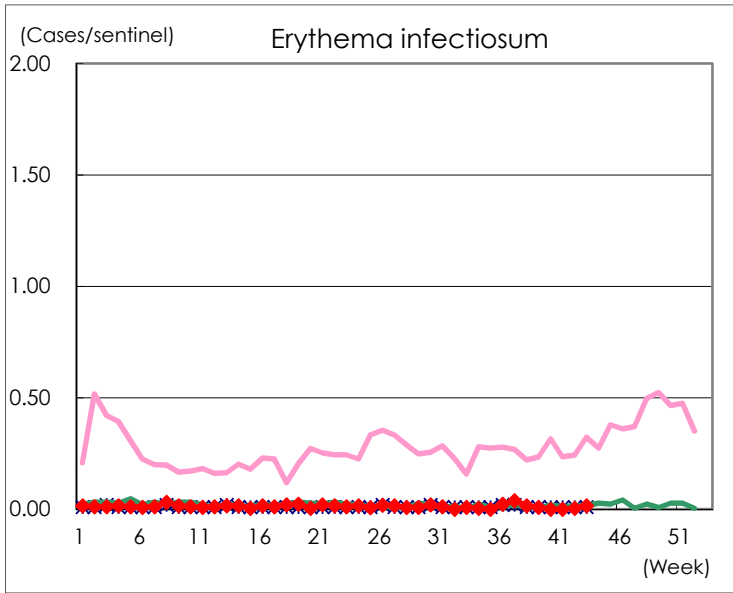
Number of patients with the diseases to be reported
by the designated clinics and hospitals

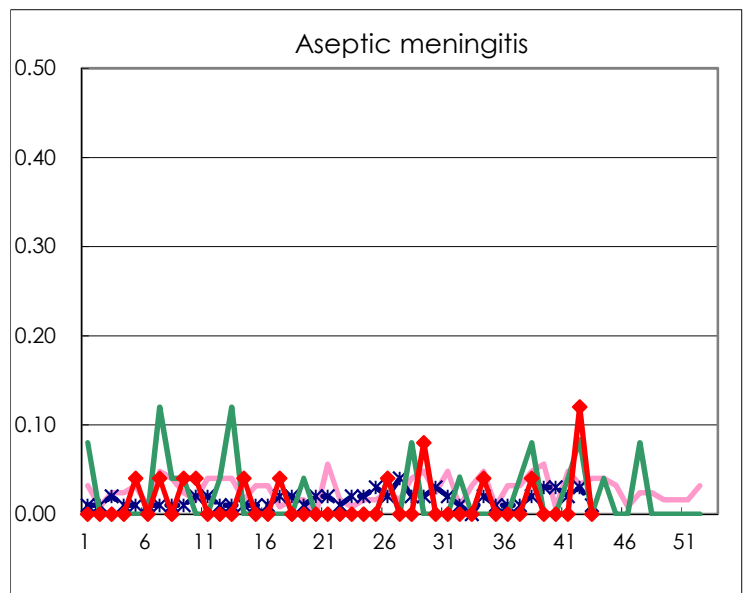
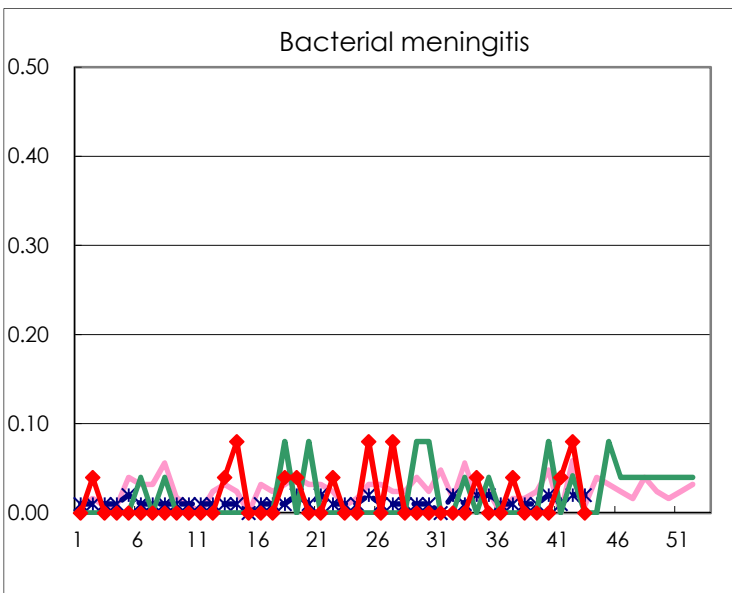
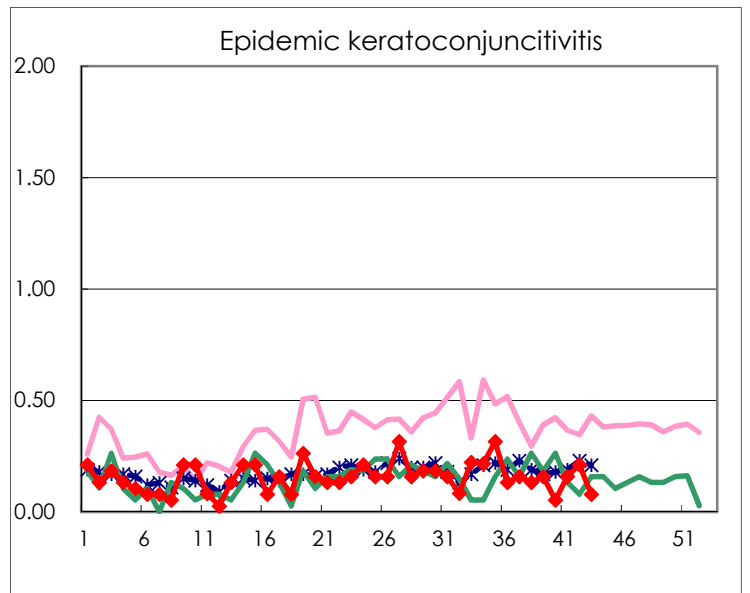
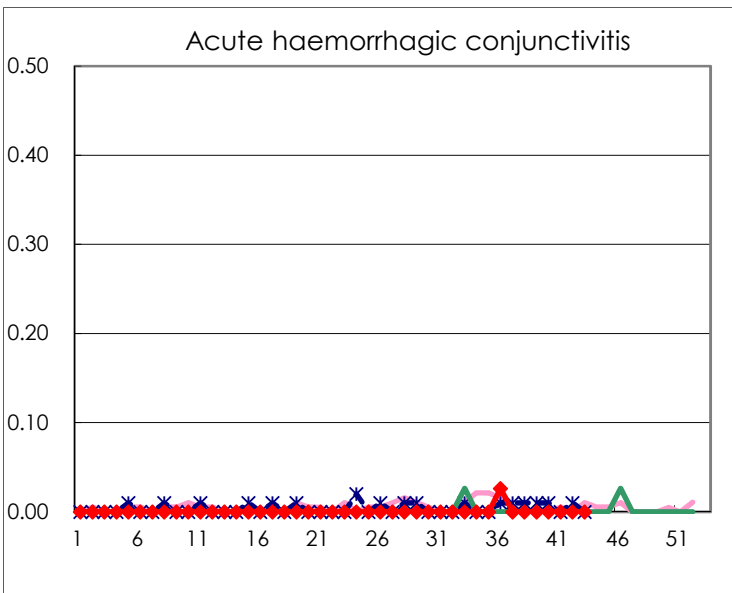
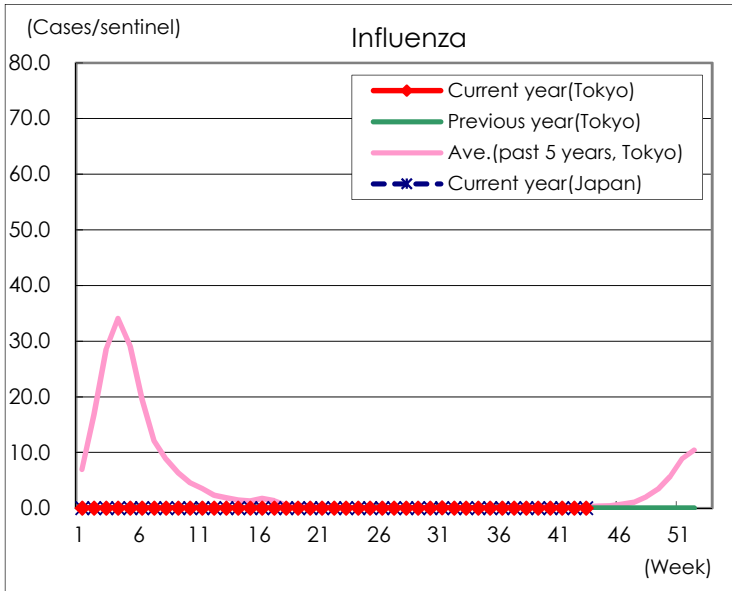
Diseases	Tokyo				
	40th	41st	42nd	43rd	/sentinel
Respiratory syncytial virus infection	299	228	238	226	0.88
Pharyngoconjunctival fever	11	12	21	9	0.03
Group A streptococcal pharyngitis	36	29	37	68	0.26
Infectious gastroenteritis	633	676	806	804	3.12
Chickenpox	19	10	22	38	0.15
Hand, foot, and mouth disease	517	339	356	277	1.07
Erythema infectiosum			1	4	0.02
Exanthem subitum	50	50	86	80	0.31
Herpangina	96	76	98	67	0.26
Mumps	7	6	10	12	0.05
Kawasaki disease	3	3	3	5	0.02
Cold with exanthems	11	4	8	7	0.03
Influenza	2	2	2	9	0.02
Acute hemorrhagic conjunctivitis					
Epidemic keratoconjunctivitis	2	6	8	3	0.08
Bacterial meningitis		1	2		
Aseptic meningitis			3		
Mycoplasma pneumonia					
Chlamydial pneumonia (excluding psittacosis)	1				
Infectious gastroenteritis (only by Rotavirus)					
Influenza-Associated Hospitalizations		1	1		

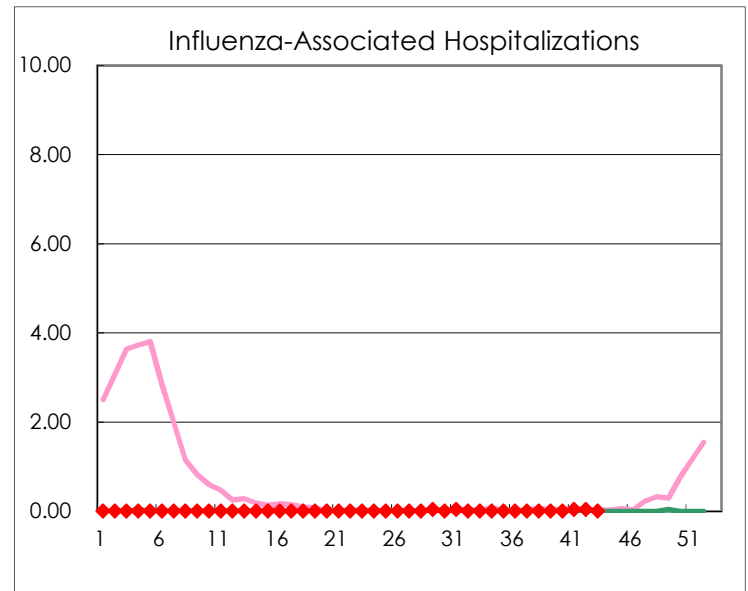
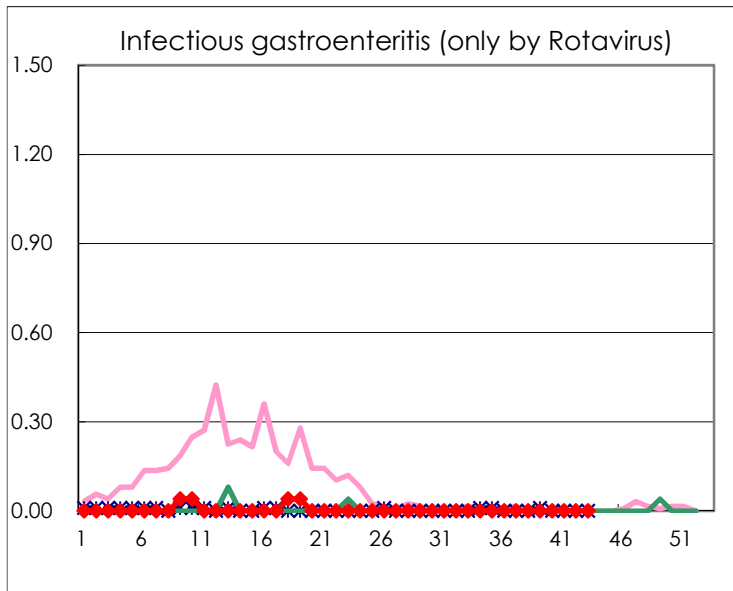
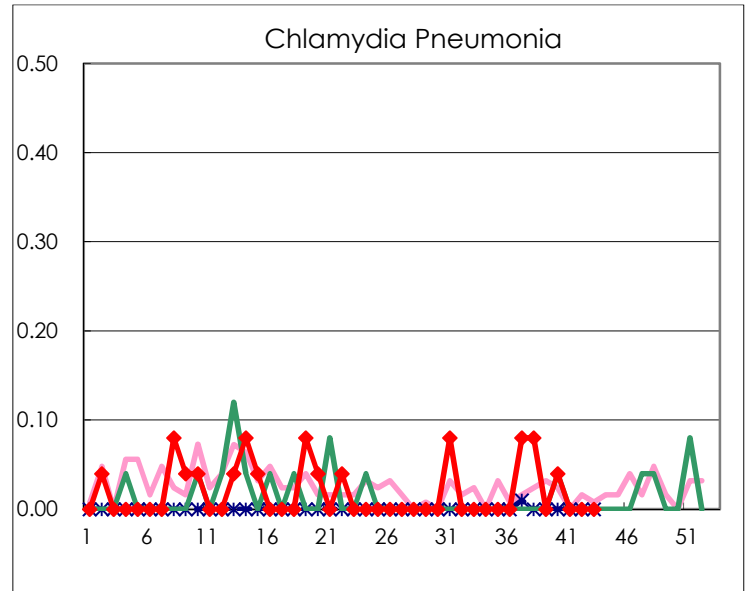
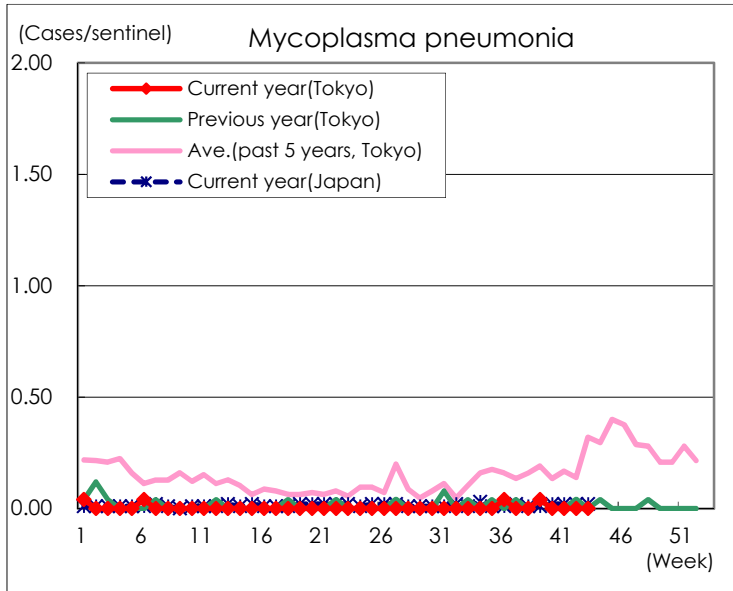
(Blank means 0.)

Disease Trend Graph (weekly reported cases per sentinel in comparison)









Number of sentinel facilities for weekly reporting		
Types of sentinels	Number of sentinels	Sentinels having reported
Pediatric	264	258
Influenza	419	408
Ophthalmic	39	38
Specially-designated	25	25