
INFECTIOUS DISEASES WEEKLY REPORT

TOKYO iDWR

Tokyo Metropolitan Infectious Disease Surveillance Center

25 November 2022 / Number 46 (11/14 ~ 11/20)

Surveillance System in Tokyo, Japan

The infectious diseases which all physicians must report
All physicians must report to health centers the incidence of the diseases which are shown at page one. Health centers electronically report the individual cases to Tokyo Metropolitan Infectious Disease Surveillance Center.

The infectious diseases required to be reported by the sentinels
The numbers of patients who visit the sentinel clinics or hospitals during a week are reported to health centers in Tokyo. And they electronically report the numbers to Tokyo Metropolitan Infectious Disease Surveillance Center. We have about 500 sentinel clinics and hospitals in Tokyo.

Tokyo Metropolitan Institute of Public Health

TEL:81-3-3363-3213 FAX:81-3-5332-7365

e-mail:tmiph@section.metro.tokyo.jp

URL:idsc.tmiph.metro.tokyo.lg.jp/

Number of patients with the diseases which all physicians must report

Category	Diseases	Tokyo					Japan	
		43rd	44th	45th	46th	Cum 2022	46th	Cum 2022
I	Ebola hemorrhagic fever							
	Crimean-Congo hemorrhagic fever							
	Smallpox							
	South American hemorrhagic fever							
	Plague							
	Marburg disease							
	Lassa fever							
II	Acute poliomyelitis							
	Tuberculosis	38	29	40	46	1,779	226	13,054
	Diphtheria							
	Severe Acute Respiratory Syndrome(SARS)							
	Middle East Respiratory Syndrome (MERS)							
	Avian influenza H5N1							
	Avian influenza H7N9							
III	Cholera					1		1
	Shigellosis					2		14
	Enterohemorrhagic Escherichia coli infection	6		1	3	329	30	3,093
	Typhoid fever		1			7		16
	Paratyphoid fever					3		8
IV	Hepatitis E	2	4	1		115	8	381
	West Nile fever							
	Hepatitis A					5	1	62
	Echinococcosis					3		20
	Yellow fever							
	Psittacosis					2		10
	Omsk hemorrhagic fever							
	Relapsing fever							20
	Kyasanur forest disease							
	Q fever							
	Rabies							
	Coccidioidomycosis							2
	Monkeypox					5		6
	Zika virus infection							
	Severe Fever with Thrombocytopenia Syndrome					1	1	114
	Hemorrhagic fever with renal syndrome							
	Western equine encephalitis							
	Tick-borne encephalitis							
	Anthrax							
	Chikungunya fever					1		5
	Scrub typhus(Tsutsugamushi disease)	1				4	32	188
	Dengue fever	4	2	3		24	1	90
	Eastern equine encephalitis							
	Avian influenza (excluding H5N1 and H7N9)							
	Nipah virus infection							
	Japanese spotted fever						2	444
	Japanese encephalitis							5
	Hantavirus pulmonary syndrome							
	Herpes B virus infection							
	Glanders							
	Brucellosis							1
	Venezuelan equine encephalitis							
	Hendra virus infection							
Epidemic typhus								
Botulism					1		1	
Malaria					6		27	
Tularemia								
Lyme disease					2		13	
Lyssavirus infection(excluding rabies)								
Rift valley fever								
Melioidosis							2	
Legionellosis	4	2	2	7	109	26	1,969	
Leptospirosis					4		36	
Rocky mountain spotted fever								

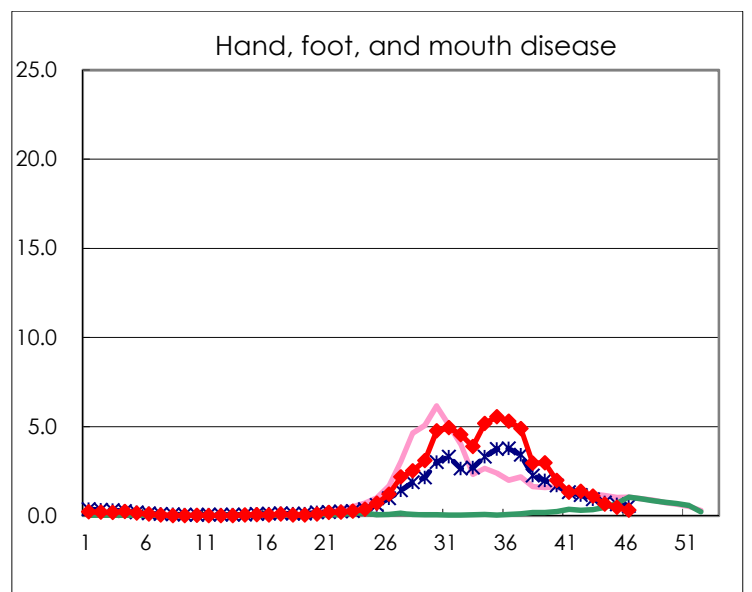
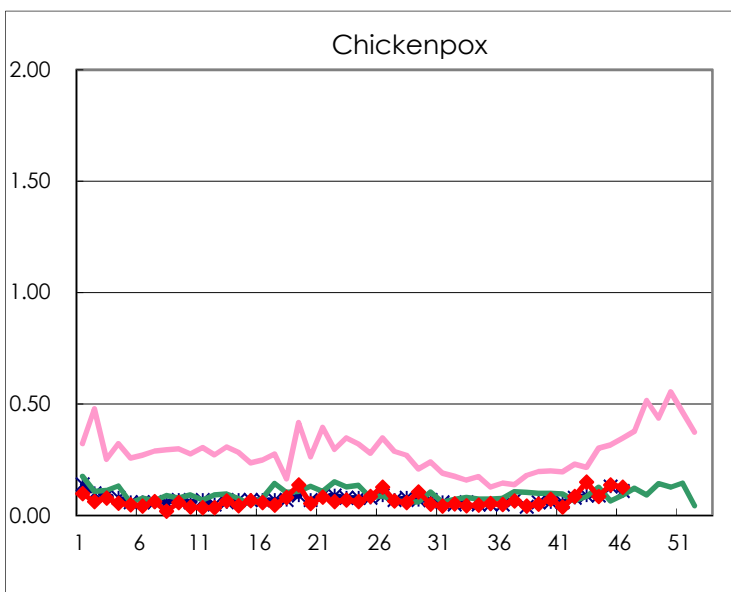
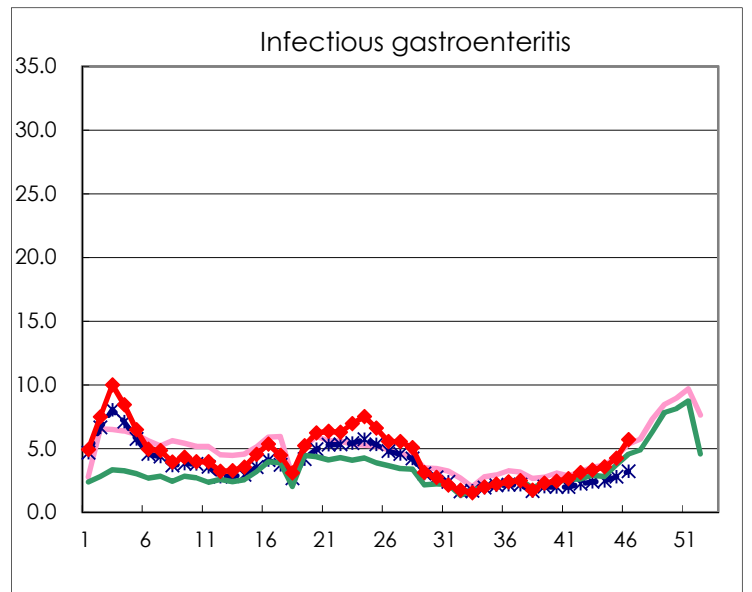
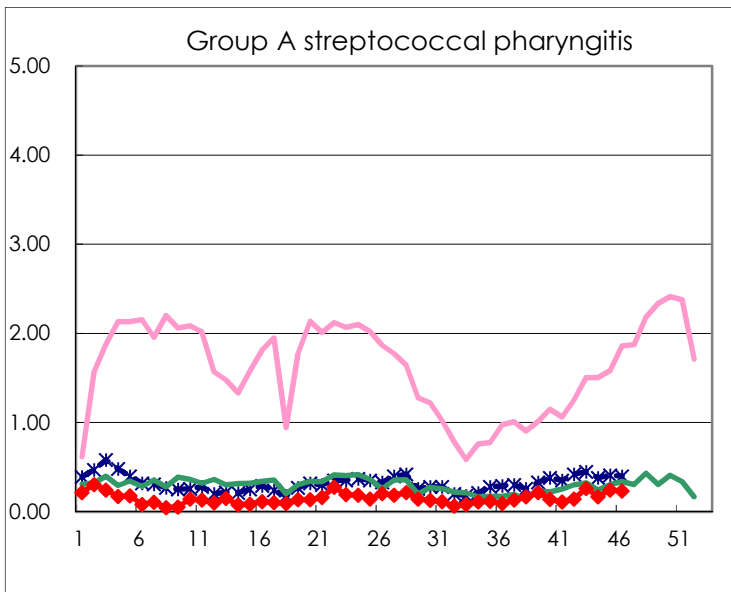
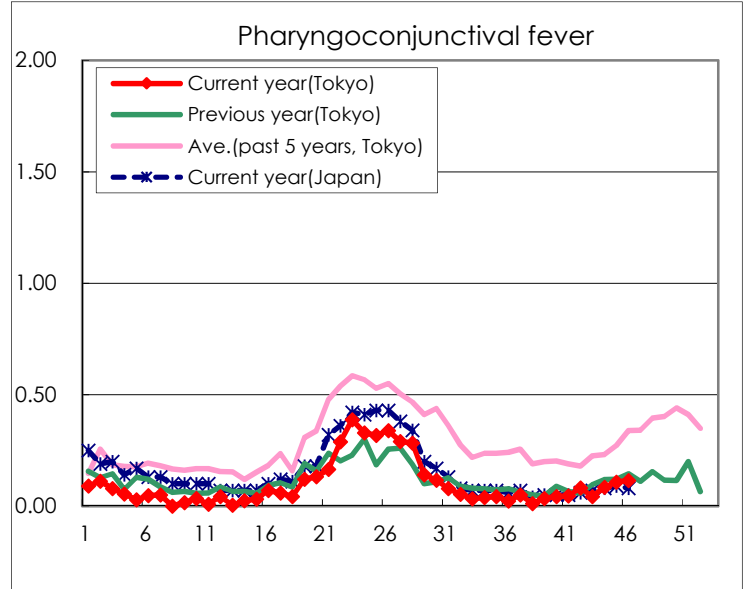
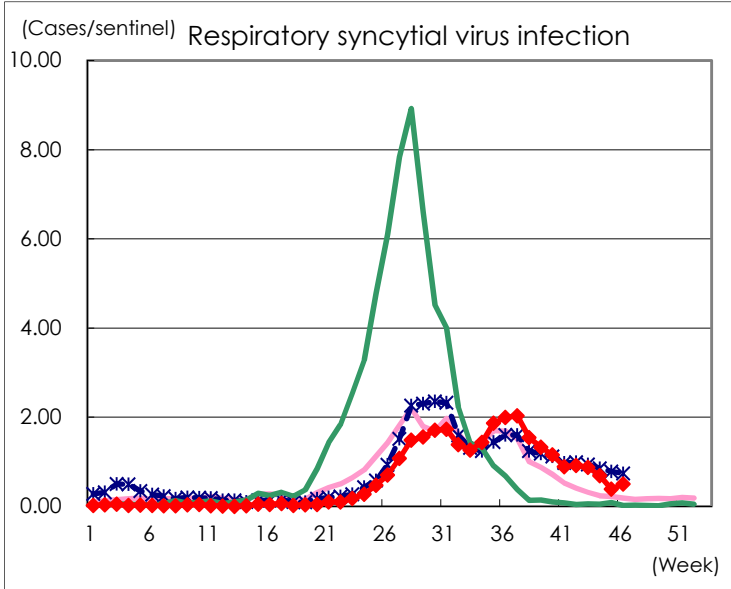
Category	Diseases	Tokyo					Japan	
		43rd	44th	45th	46th	Cum 2022	46th	Cum 2022
V	Amebiasis	1	2		1	105	4	464
	Viral hepatitis(excluding hepatitis A and E)	1		1	1	32	5	179
	CRE infection	6	2	5	2	181	26	1,722
	Acute Flaccid Paralysis (excluding Acute poliomyelitis)	1				4	2	32
	Acute encephalitis(excluding JE and WNE)			1		28	10	339
	Cryptosporidiosis					2		7
	Creutzfeldt-Jakob disease		1			17	1	147
	Severe invasive streptococcal infections(TSLS)	3	2	2		91	11	636
	Acquired immunodeficiency syndrome (AIDS)	6	4	8	7	249	7	764
	Giardiasis				1	12	1	32
	Invasive <i>Haemophilus influenzae</i> disease				1	16	3	159
	Invasive meningococcal disease							6
	Invasive pneumococcal disease	1	4	2	3	119	22	1,113
	Varicella (limited to hospitalized case)	2	1	2		44	6	285
	Congenital rubella syndrome							
	Syphilis	69	75	80	68	3,212	202	11,353
	Disseminated cryptococcosis					13		129
	Tetanus					4	2	91
	Vancomycin-resistant <i>S. aureus</i> infection							
	Vancomycin-resistant <i>Enterococcus</i> infection			1		6	1	126
	Pertussis		1		1	44	12	428
Rubella					2		12	
Measles							6	
MDRA infection					2	1	12	

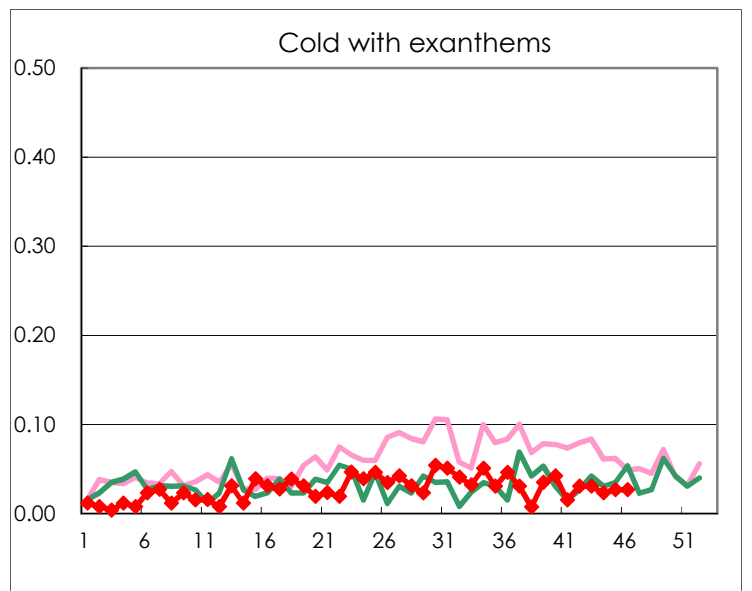
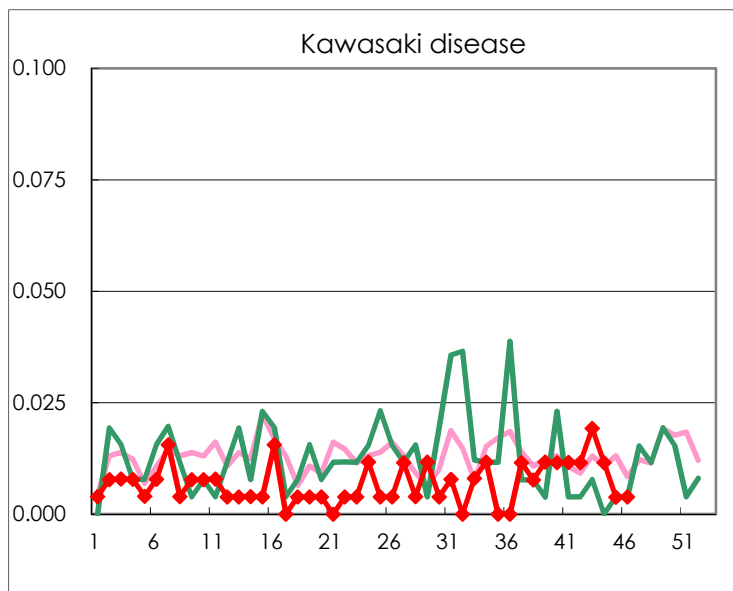
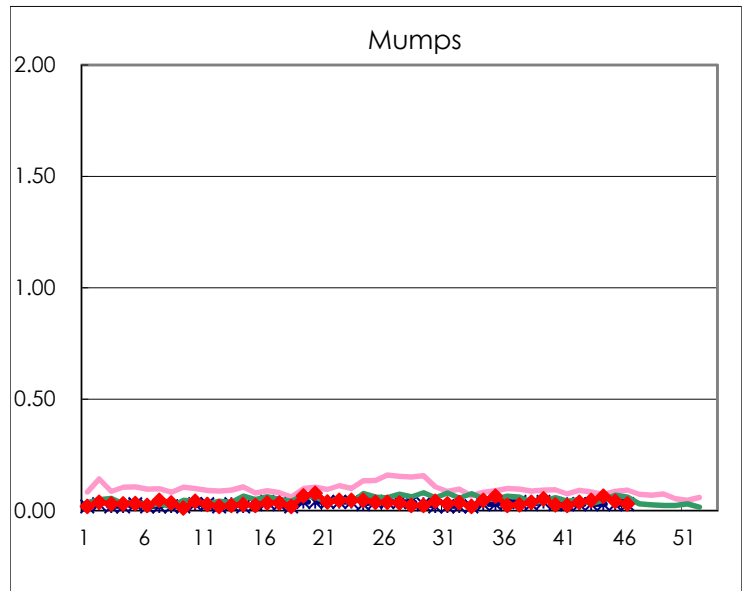
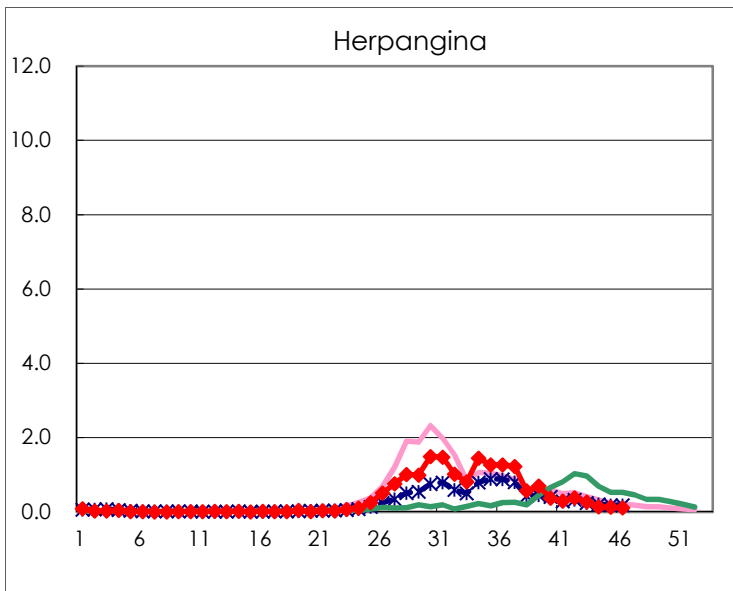
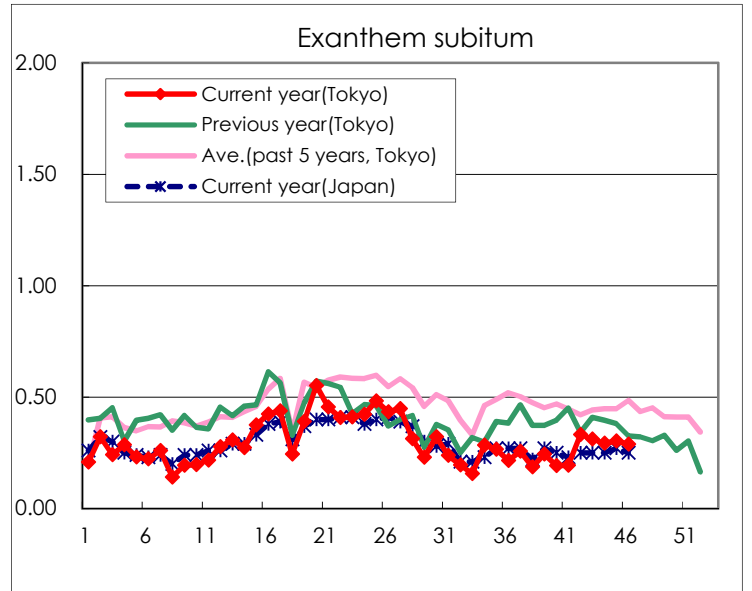
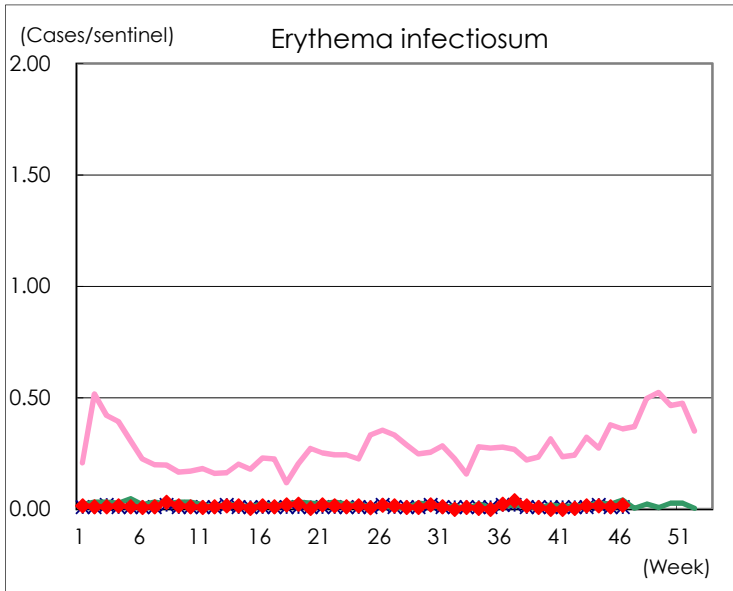
Number of patients with the diseases to be reported
by the designated clinics and hospitals

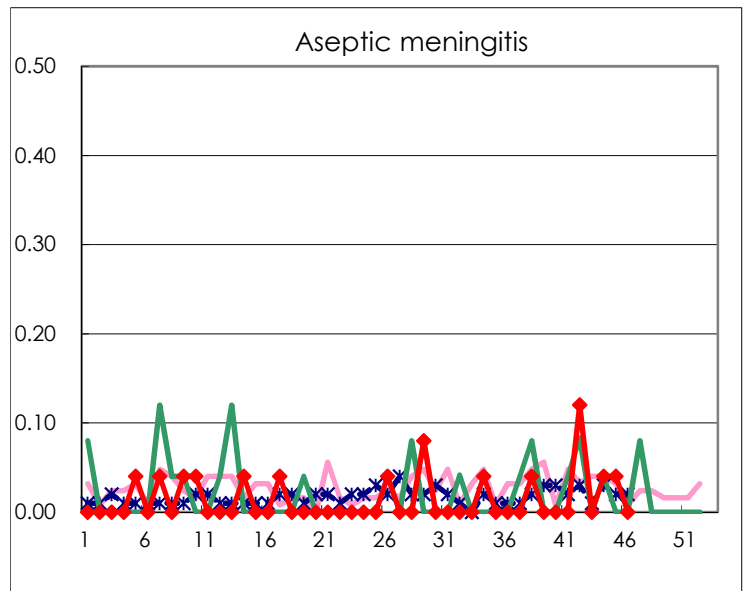
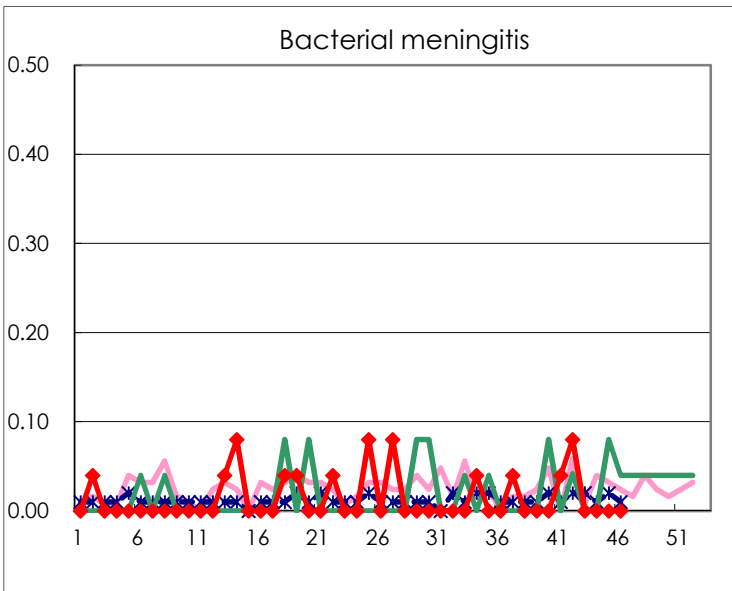
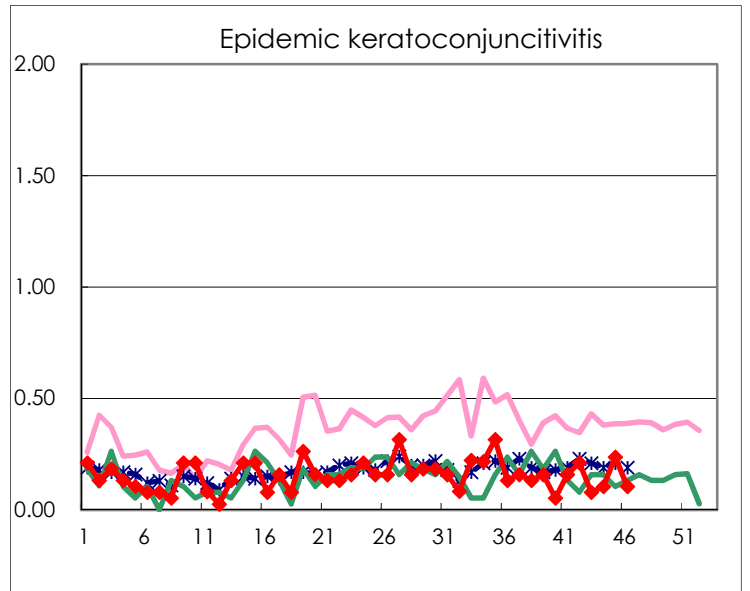
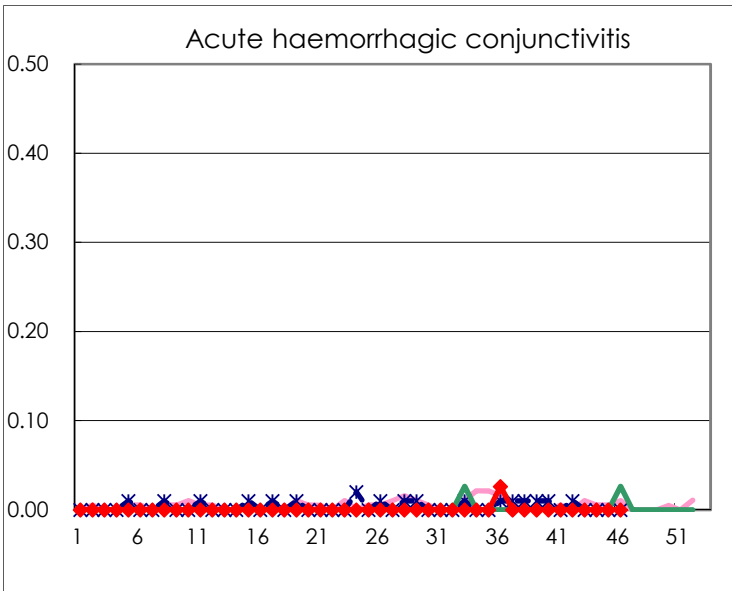
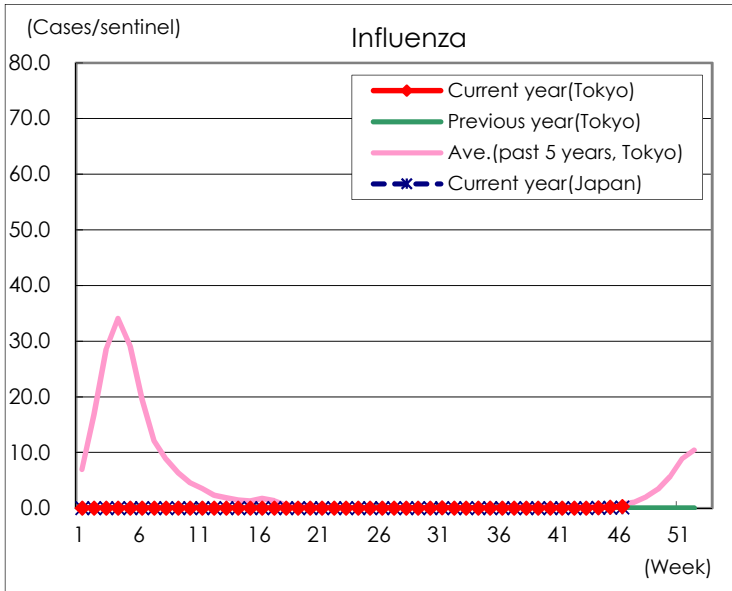
Diseases	Tokyo				
	43rd	44th	45th	46th	/sentinel
Respiratory syncytial virus infection	227	178	101	130	0.50
Pharyngoconjunctival fever	11	22	28	30	0.12
Group A streptococcal pharyngitis	68	44	64	61	0.23
Infectious gastroenteritis	860	924	1,103	1,480	5.69
Chickenpox	39	22	36	33	0.13
Hand, foot, and mouth disease	288	170	126	83	0.32
Erythema infectiosum	4	4	3	5	0.02
Exanthem subitum	81	76	79	75	0.29
Herpangina	69	36	34	28	0.11
Mumps	12	17	11	8	0.03
Kawasaki disease	5	3	1	1	0.00
Cold with exanthems	8	6	7	7	0.03
Influenza	9	31	84	125	0.31
Acute hemorrhagic conjunctivitis					
Epidemic keratoconjunctivitis	3	4	9	4	0.11
Bacterial meningitis					
Aseptic meningitis		1	1		
Mycoplasma pneumonia				1	0.04
Chlamydial pneumonia (excluding psittacosis)			1		
Infectious gastroenteritis (only by Rotavirus)					
Influenza-Associated Hospitalizations					

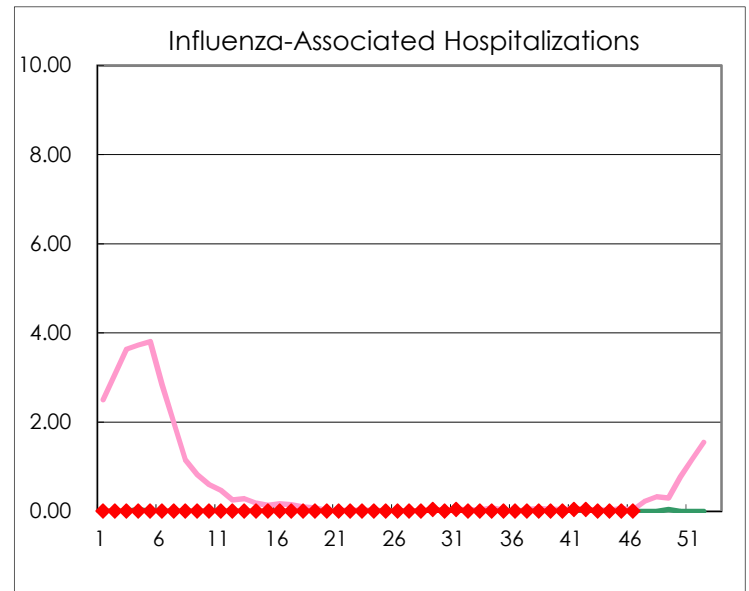
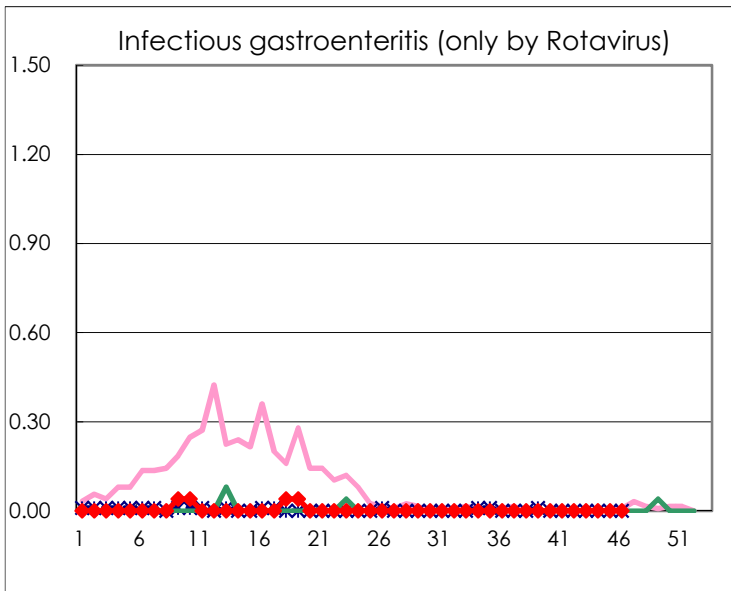
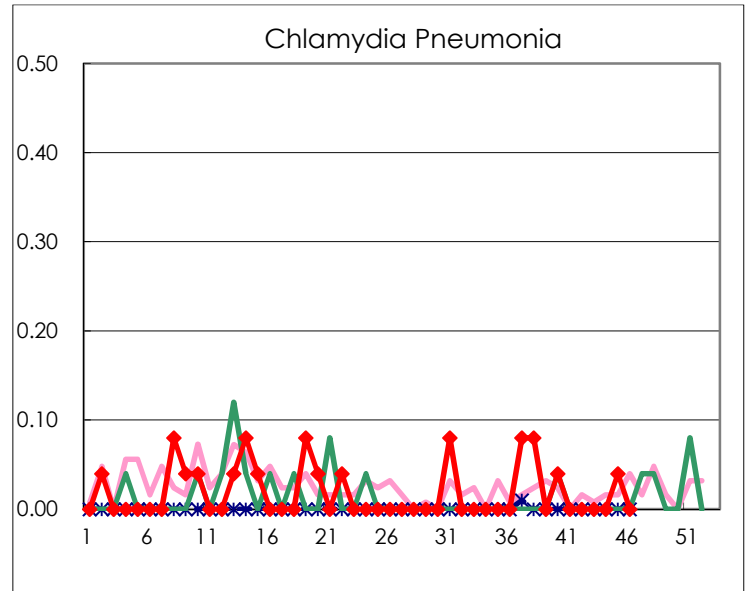
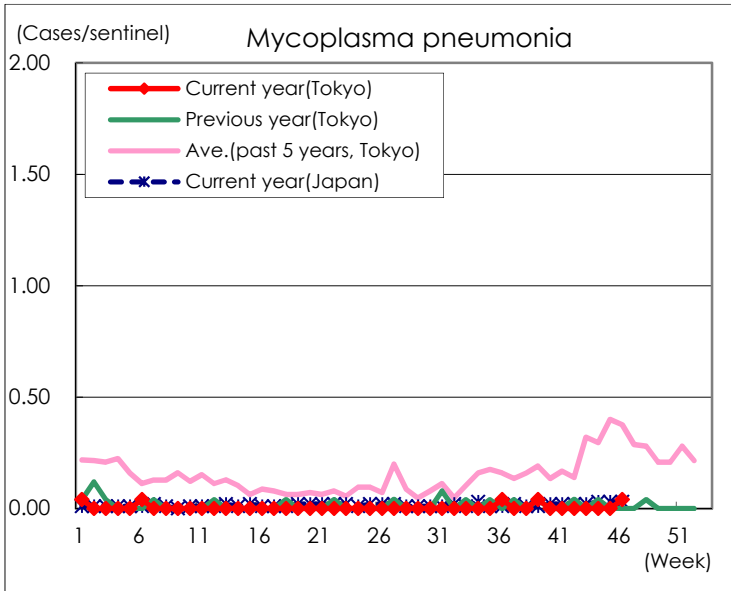
(Blank means 0.)

Disease Trend Graph (weekly reported cases per sentinel in comparison)









Number of sentinel facilities for weekly reporting		
Types of sentinels	Number of sentinels	Sentinels having reported
Pediatric	264	260
Influenza	419	409
Ophthalmic	39	38
Specially-designated	25	25