
INFECTIOUS DISEASES WEEKLY REPORT

TOKYO iDWR

Tokyo Metropolitan Infectious Disease Surveillance Center

1 December 2022 / Number 47
(11/21 ~ 11/27)

Surveillance System in Tokyo, Japan

The infectious diseases which all physicians must report
All physicians must report to health centers the incidence of the diseases which are shown at page one. Health centers electronically report the individual cases to Tokyo Metropolitan Infectious Disease Surveillance Center.

The infectious diseases required to be reported by the sentinels
The numbers of patients who visit the sentinel clinics or hospitals during a week are reported to health centers in Tokyo. And they electronically report the numbers to Tokyo Metropolitan Infectious Disease Surveillance Center. We have about 500 sentinel clinics and hospitals in Tokyo.

Tokyo Metropolitan Institute of Public Health

TEL:81-3-3363-3213 FAX:81-3-5332-7365

e-mail:tmiph@section.metro.tokyo.jp

URL:idsc.tmiph.metro.tokyo.lg.jp/

Number of patients with the diseases which all physicians must report

Category	Diseases	Tokyo					Japan	
		44th	45th	46th	47th	Cum 2022	47th	Cum 2022
I	Ebola hemorrhagic fever							
	Crimean-Congo hemorrhagic fever							
	Smallpox							
	South American hemorrhagic fever							
	Plague							
	Marburg disease							
	Lassa fever							
II	Acute poliomyelitis							
	Tuberculosis	29	41	53	30	1,817	186	13,288
	Diphtheria							
	Severe Acute Respiratory Syndrome(SARS)							
	Middle East Respiratory Syndrome (MERS)							
	Avian influenza H5N1							
	Avian influenza H7N9							
III	Cholera					1		1
	Shigellosis					2		14
	Enterohemorrhagic Escherichia coli infection		1	3	5	334	38	3,140
	Typhoid fever	1				7		16
	Paratyphoid fever					3		8
IV	Hepatitis E	4	1			115	4	385
	West Nile fever							
	Hepatitis A					5		62
	Echinococcosis					3		21
	Yellow fever							
	Psittacosis				1	3	1	11
	Omsk hemorrhagic fever							
	Relapsing fever							20
	Kyasanur forest disease							
	Q fever							
	Rabies							
	Coccidioidomycosis							2
	Monkeypox					5		6
	Zika virus infection							
	Severe Fever with Thrombocytopenia Syndrome					1	1	116
	Hemorrhagic fever with renal syndrome							
	Western equine encephalitis							
	Tick-borne encephalitis							
	Anthrax							
	Chikungunya fever					1		5
	Scrub typhus(Tsutsugamushi disease)				2	6	38	235
	Dengue fever	2	3			24	1	91
	Eastern equine encephalitis							
	Avian influenza (excluding H5N1 and H7N9)							
	Nipah virus infection							
	Japanese spotted fever						1	448
	Japanese encephalitis							5
	Hantavirus pulmonary syndrome							
	Herpes B virus infection							
	Glanders							
	Brucellosis							1
	Venezuelan equine encephalitis							
	Hendra virus infection							
Epidemic typhus								
Botulism					1		1	
Malaria				1	7	1	28	
Tularemia								
Lyme disease					2		13	
Lyssavirus infection(excluding rabies)								
Rift valley fever								
Melioidosis							2	
Legionellosis	2	2	7	2	111	27	1,999	
Leptospirosis					4		36	
Rocky mountain spotted fever								

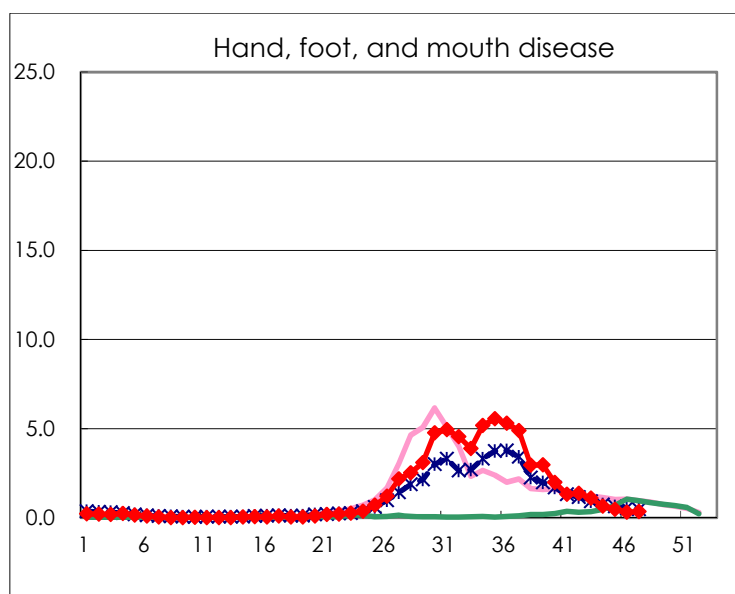
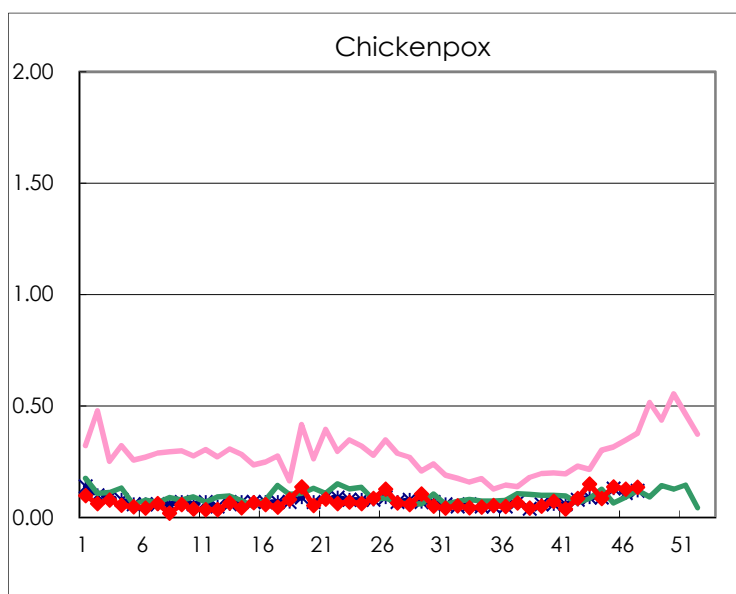
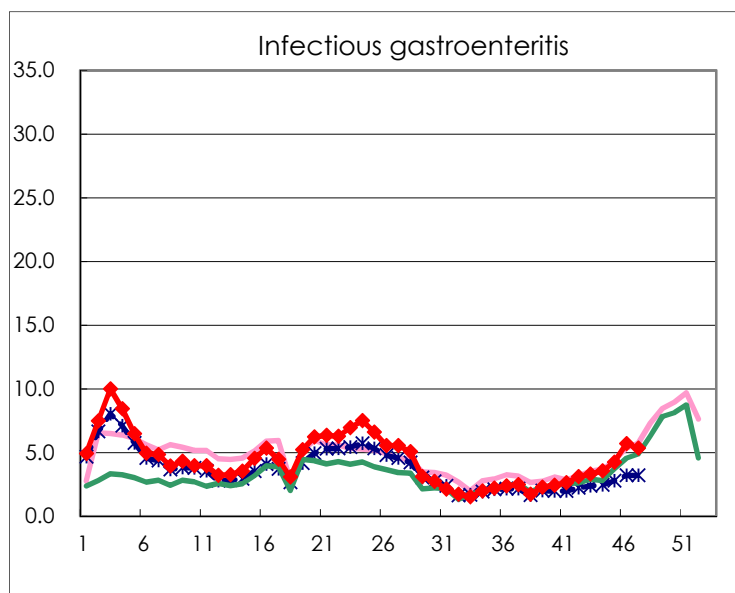
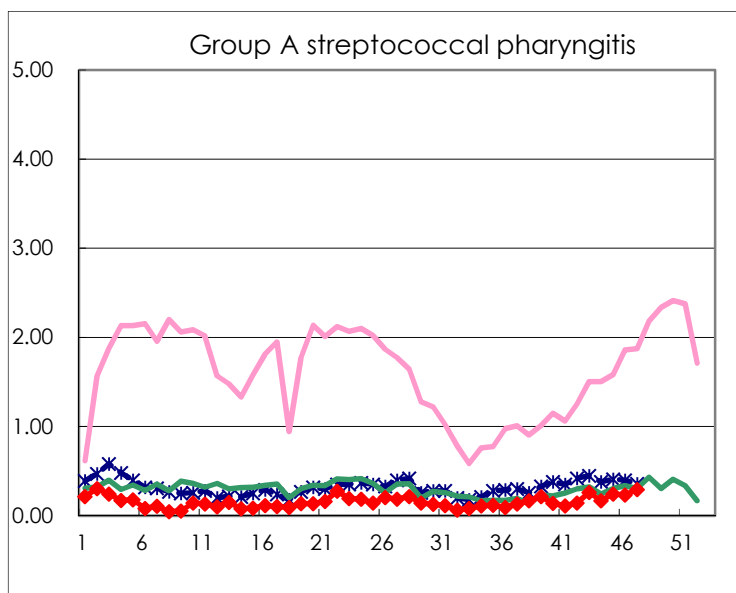
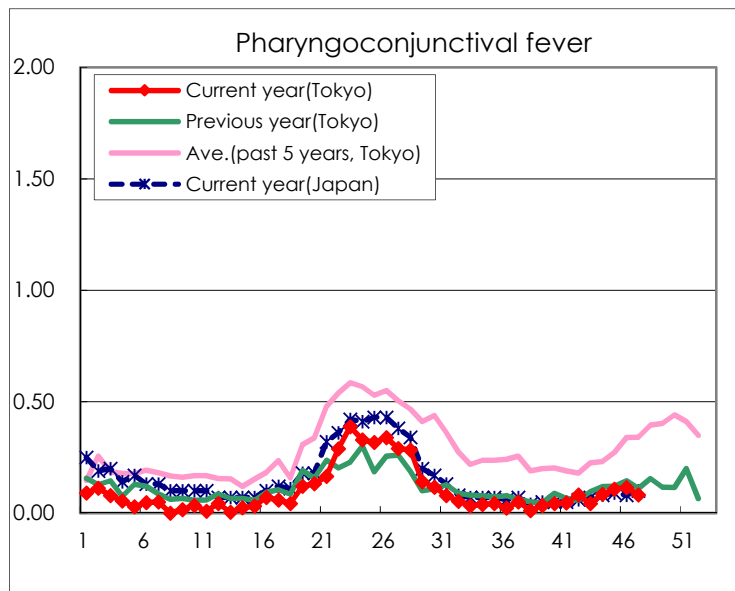
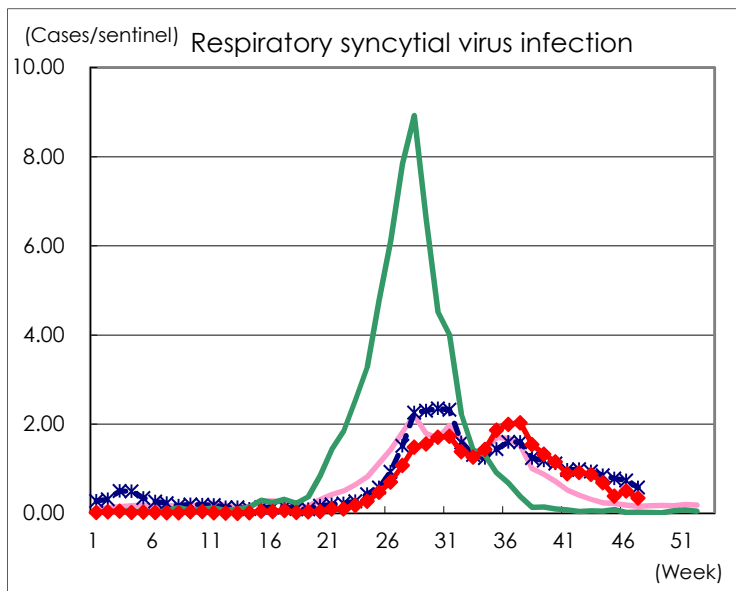
Category	Diseases	Tokyo					Japan	
		44th	45th	46th	47th	Cum 2022	47th	Cum 2022
V	Amebiasis	2		1	2	107	7	476
	Viral hepatitis(excluding hepatitis A and E)		1	1		32	6	186
	CRE infection	2	6	2	3	186	26	1,761
	Acute Flaccid Paralysis (excluding Acute poliomyelitis)					4	2	34
	Acute encephalitis(excluding JE and WNE)		1			28	6	349
	Cryptosporidiosis					2		7
	Creutzfeldt-Jakob disease	1				17	3	153
	Severe invasive streptococcal infections(TSLS)	2	2		4	95	16	661
	Acquired immunodeficiency syndrome (AIDS)	4	8	8	3	253	6	779
	Giardiasis			1		12		32
	Invasive <i>Haemophilus influenzae</i> disease			1		16	4	165
	Invasive meningococcal disease			1		1		7
	Invasive pneumococcal disease	4	2	4	1	121	23	1,142
	Varicella (limited to hospitalized case)	1	2			44	6	291
	Congenital rubella syndrome							
	Syphilis	75	80	76	58	3,278	136	11,586
	Disseminated cryptococcosis				1	14	2	135
	Tetanus				1	5	1	92
	Vancomycin-resistant <i>S. aureus</i> infection							
	Vancomycin-resistant <i>Enterococcus</i> infection		1			6	1	127
	Pertussis	1		1	4	48	18	449
Rubella	1				3		13	
Measles							6	
MDRA infection					2		12	

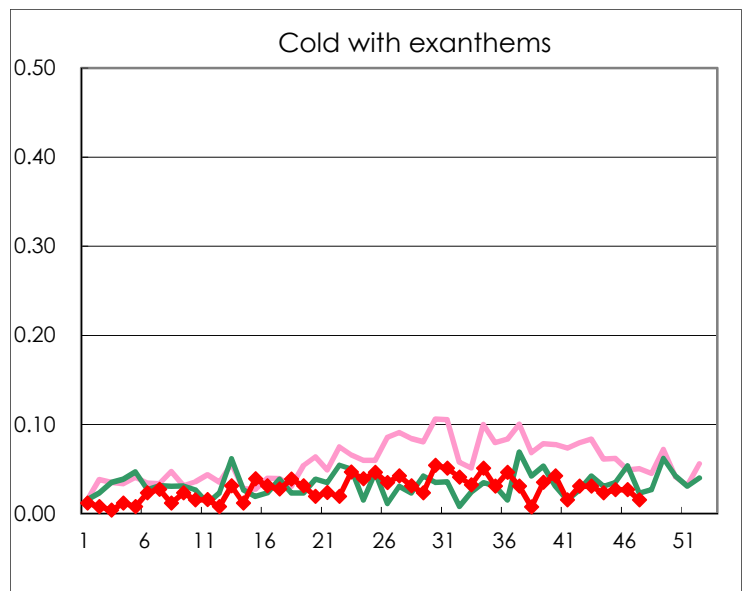
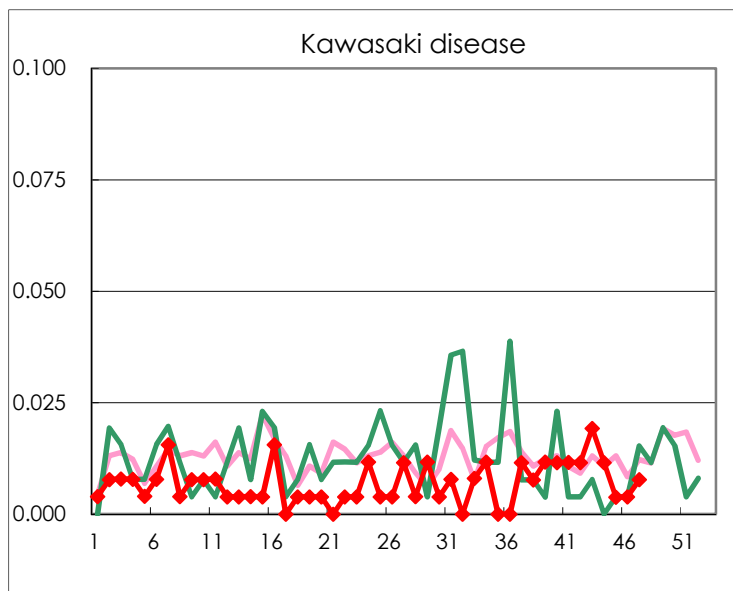
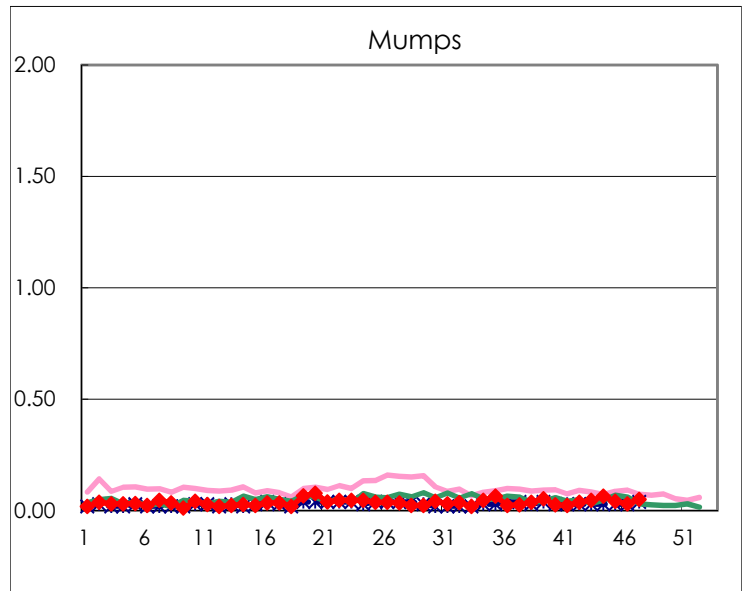
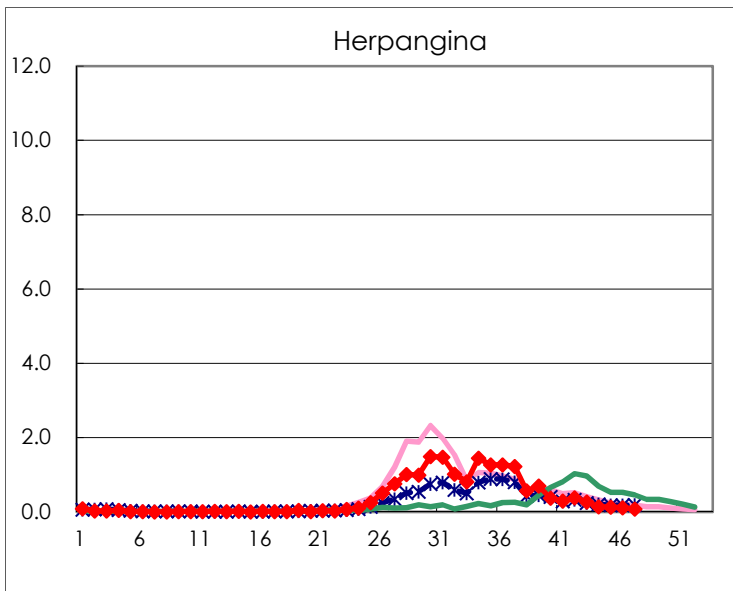
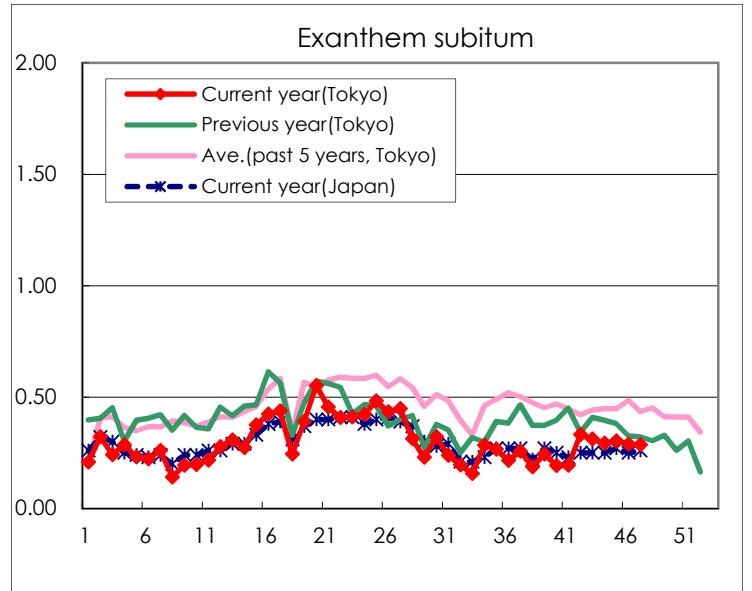
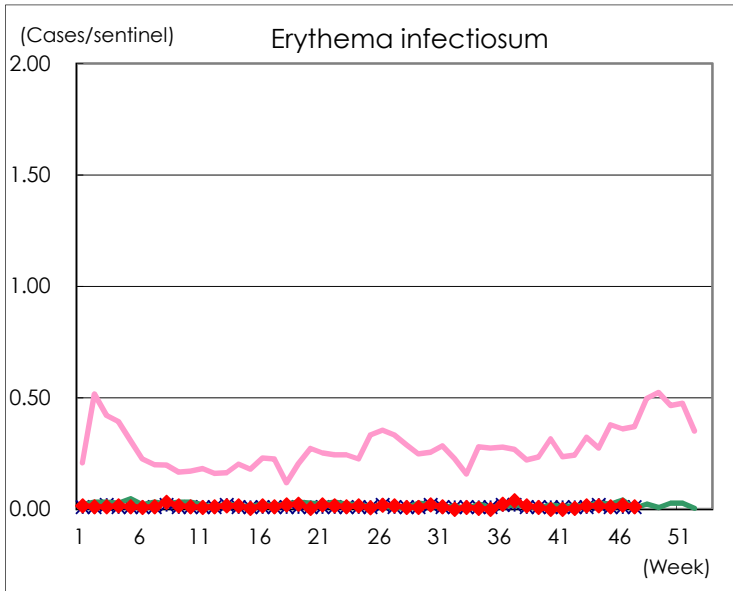
Number of patients with the diseases to be reported
by the designated clinics and hospitals

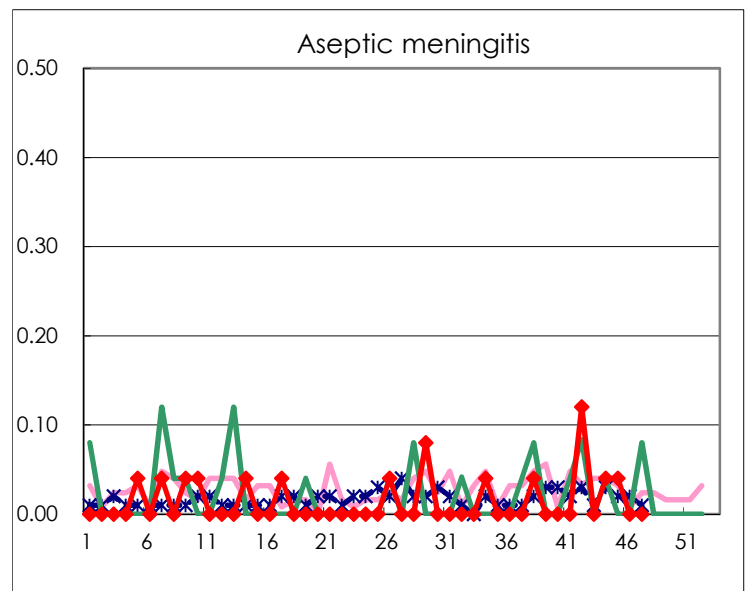
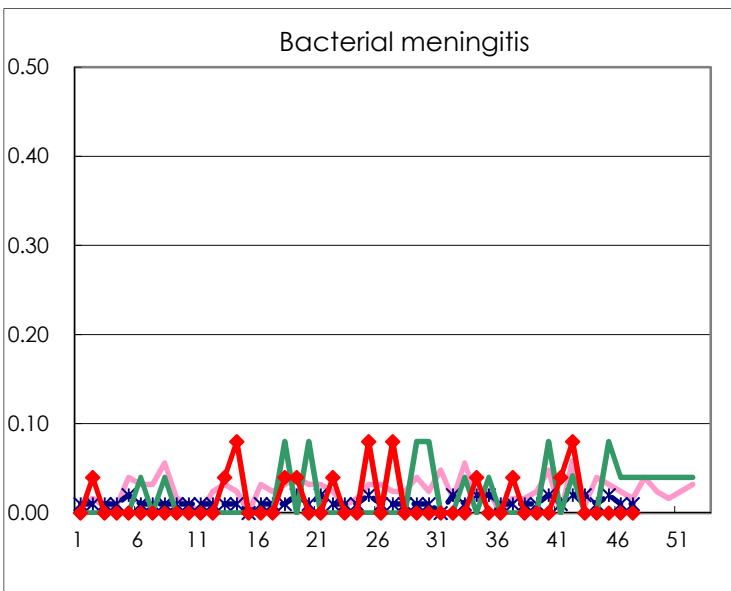
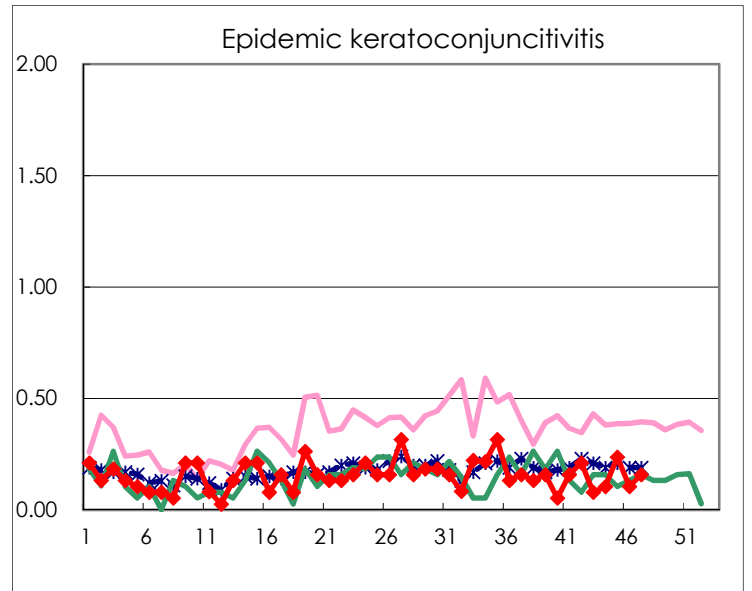
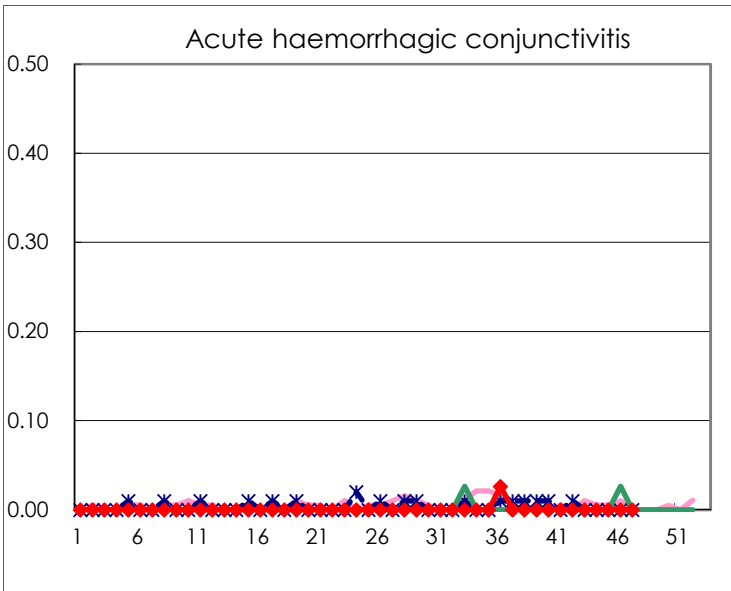
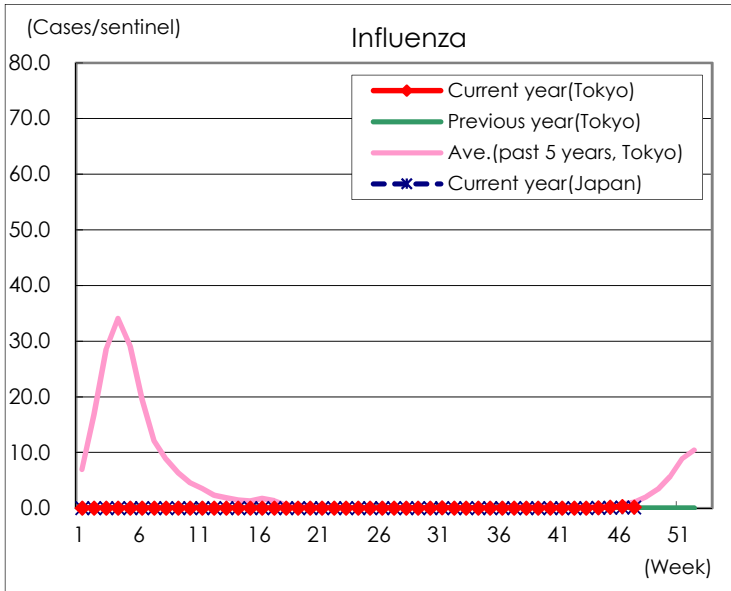
Diseases	Tokyo				
	44th	45th	46th	47th	/sentinel
Respiratory syncytial virus infection	178	101	130	88	0.34
Pharyngoconjunctival fever	22	28	30	21	0.08
Group A streptococcal pharyngitis	44	64	61	76	0.29
Infectious gastroenteritis	924	1,103	1,480	1,376	5.33
Chickenpox	22	36	33	35	0.14
Hand, foot, and mouth disease	170	126	83	90	0.35
Erythema infectiosum	4	3	5	3	0.01
Exanthem subitum	76	79	75	74	0.29
Herpangina	36	34	28	20	0.08
Mumps	17	11	8	13	0.05
Kawasaki disease	3	1	1	2	0.01
Cold with exanthems	6	7	7	4	0.02
Influenza	31	84	125	71	0.18
Acute hemorrhagic conjunctivitis					
Epidemic keratoconjunctivitis	4	9	4	6	0.16
Bacterial meningitis					
Aseptic meningitis	1	1			
<i>Mycoplasma pneumoniae</i>			1		
Chlamydial pneumonia (excluding psittacosis)		1			
Infectious gastroenteritis (only by Rotavirus)					
Influenza-Associated Hospitalizations					

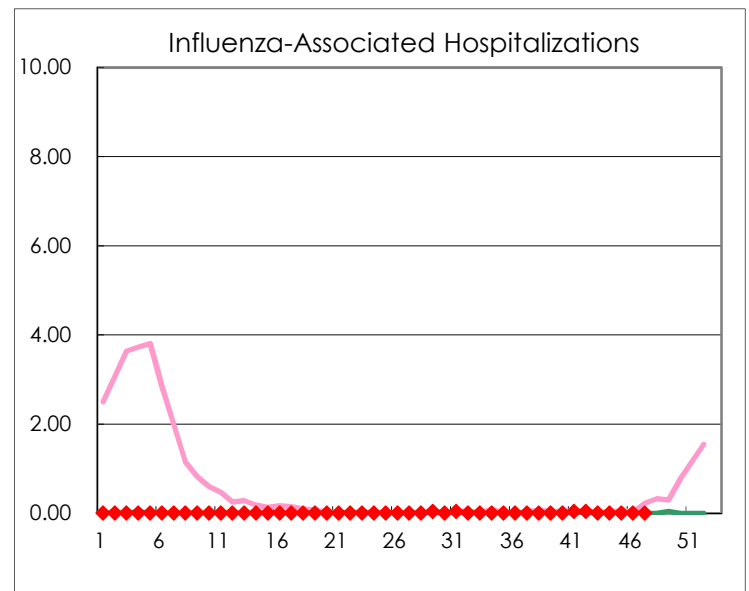
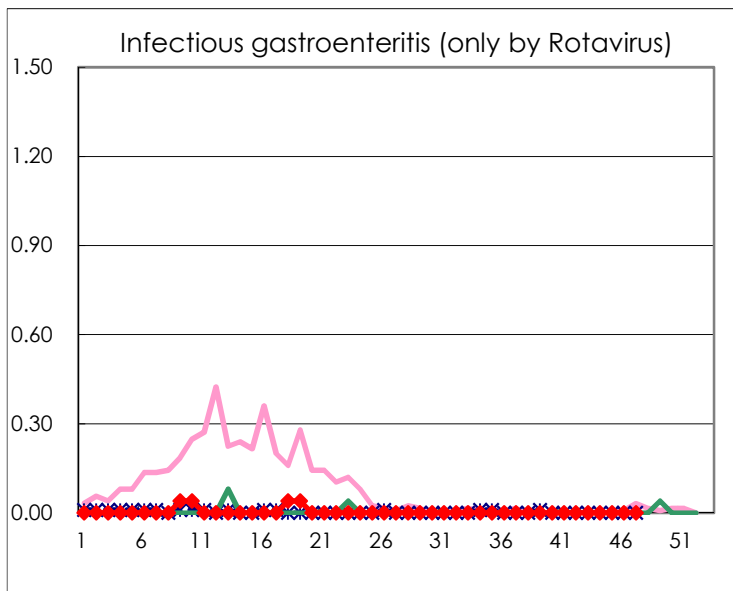
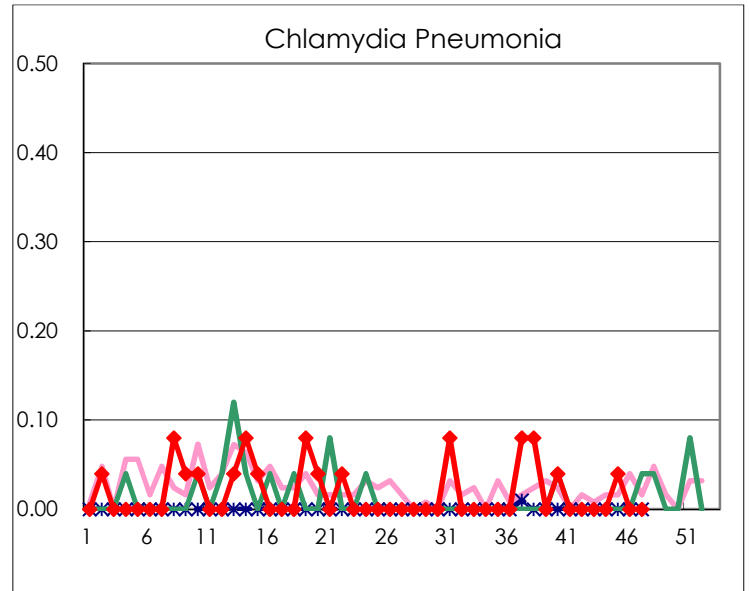
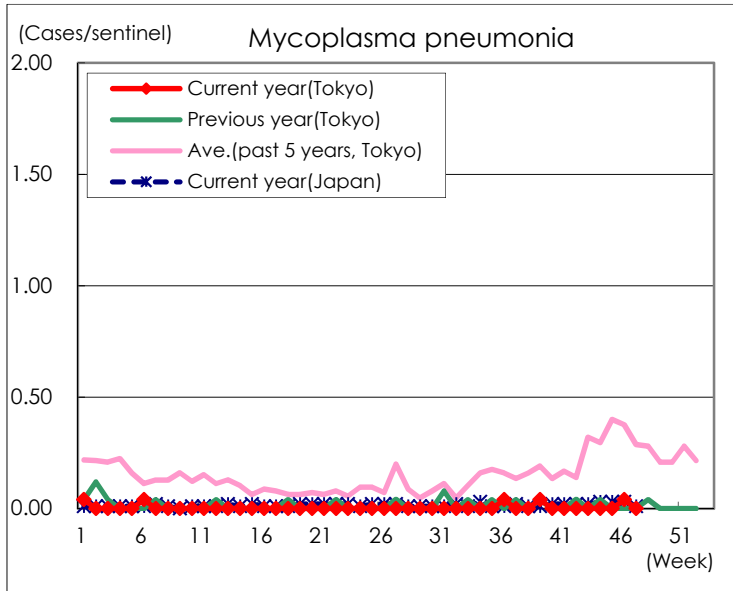
(Blank means 0.)

Disease Trend Graph (weekly reported cases per sentinel in comparison)









Number of sentinel facilities for weekly reporting		
Types of sentinels	Number of sentinels	Sentinels having reported
Pediatric	264	258
Influenza	419	405
Ophthalmic	39	38
Specially-designated	25	25