

---

INFECTIOUS DISEASES WEEKLY REPORT

# TOKYO IDWR

Tokyo Metropolitan Infectious Disease Surveillance Center

**6 January 2023 / Number 52**  
**( 12/26 ~ 1/1 )**

## Surveillance System in Tokyo, Japan

The infectious diseases which all physicians must report  
All physicians must report to health centers the incidence of the diseases which are shown at page one. Health centers electronically report the individual cases to Tokyo Metropolitan Infectious Disease Surveillance Center.

The infectious diseases required to be reported by the sentinels  
The numbers of patients who visit the sentinel clinics or hospitals during a week are reported to health centers in Tokyo. And they electronically report the numbers to Tokyo Metropolitan Infectious Disease Surveillance Center. We have about 500 sentinel clinics and hospitals in Tokyo.

Tokyo Metropolitan Institute of Public Health

TEL:81-3-3363-3213 FAX:81-3-5332-7365

e-mail:tmiph@section.metro.tokyo.jp

URL:idsc.tmiph.metro.tokyo.lg.jp/

---

Number of patients with the diseases which all physicians must report

Category	Diseases	Tokyo					Japan	
		49th	50th	51st	52nd	Cum 2022	52nd	Cum 2022
I	Ebola hemorrhagic fever							
	Crimean-Congo hemorrhagic fever							
	Smallpox							
	South American hemorrhagic fever							
	Plague							
	Marburg disease							
	Lassa fever							
II	Acute poliomyelitis							
	Tuberculosis	31	37	35	28	1,981	157	14,530
	Diphtheria							
	Severe Acute Respiratory Syndrome(SARS)							
	Middle East Respiratory Syndrome (MERS)							
	Avian influenza H5N1							
	Avian influenza H7N9							
III	Cholera					1		1
	Shigellosis					2		16
	Enterohemorrhagic Escherichia coli infection	5	4	5	2	355	21	3,352
	Typhoid fever					7		17
	Paratyphoid fever			1		4		9
IV	Hepatitis E	3	5	4		130	6	428
	West Nile fever							
	Hepatitis A			1		6		68
	Echinococcosis					3		26
	Yellow fever							
	Psittacosis	1				4		12
	Omsk hemorrhagic fever							
	Relapsing fever						2	25
	Kyasanur forest disease							
	Q fever							
	Rabies							
	Coccidioidomycosis							2
	Monkeypox					5		7
	Zika virus infection							
	Severe Fever with Thrombocytopenia Syndrome					1		118
	Hemorrhagic fever with renal syndrome							
	Western equine encephalitis							
	Tick-borne encephalitis							
	Anthrax							
	Chikungunya fever					1		6
	Scrub typhus(Tsutsugamushi disease)	1	2	2		14	20	481
	Dengue fever				1	26	1	99
	Eastern equine encephalitis							
	Avian influenza (excluding H5N1 and H7N9)							
	Nipah virus infection							
	Japanese spotted fever							460
	Japanese encephalitis							5
	Hantavirus pulmonary syndrome							
	Herpes B virus infection							
	Glanders							
	Brucellosis							1
	Venezuelan equine encephalitis							
	Hendra virus infection							
Epidemic typhus								
Botulism					1		1	
Malaria					9		31	
Tularemia								
Lyme disease					2		14	
Lyssavirus infection(excluding rabies)								
Rift valley fever								
Melioidosis							2	
Legionellosis	2		2	4	121	20	2,129	
Leptospirosis				1	5	1	37	
Rocky mountain spotted fever								

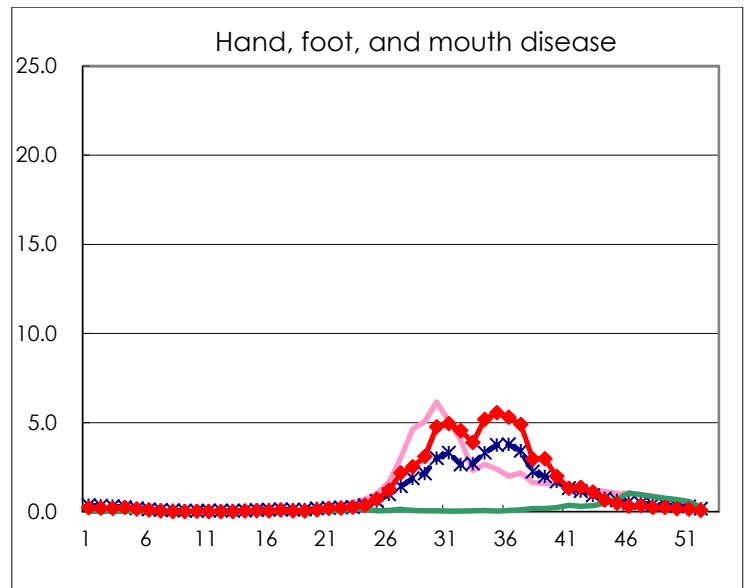
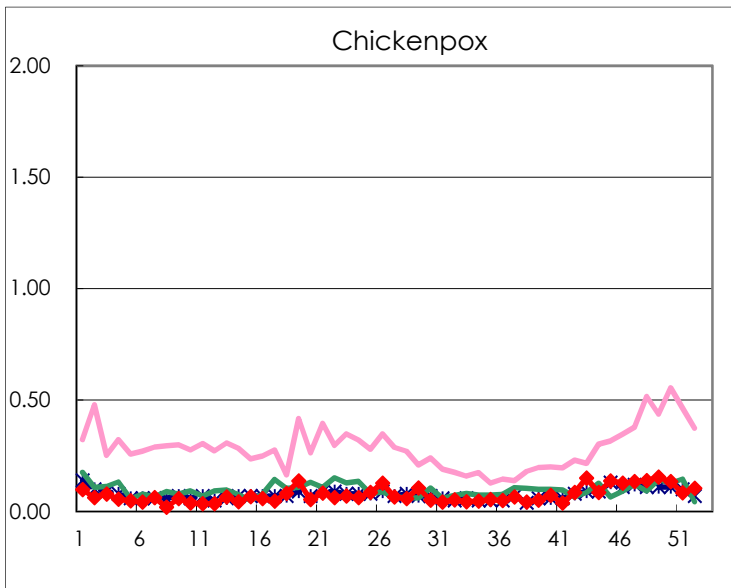
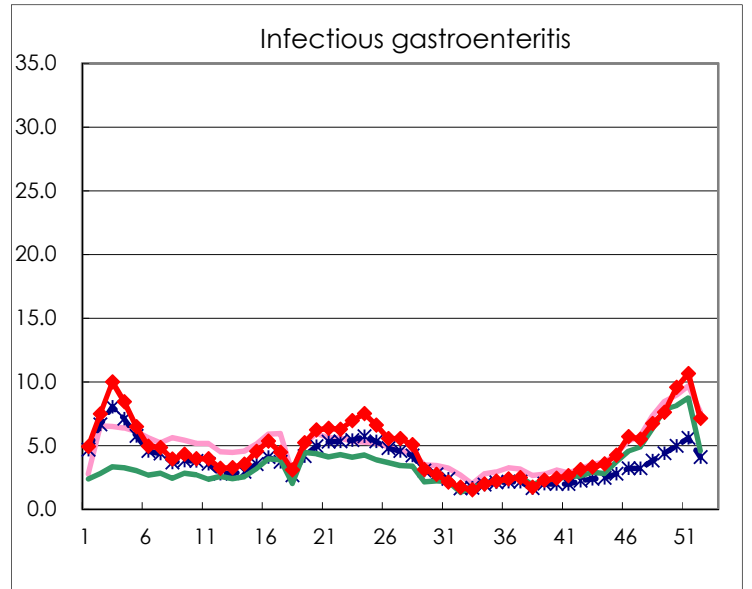
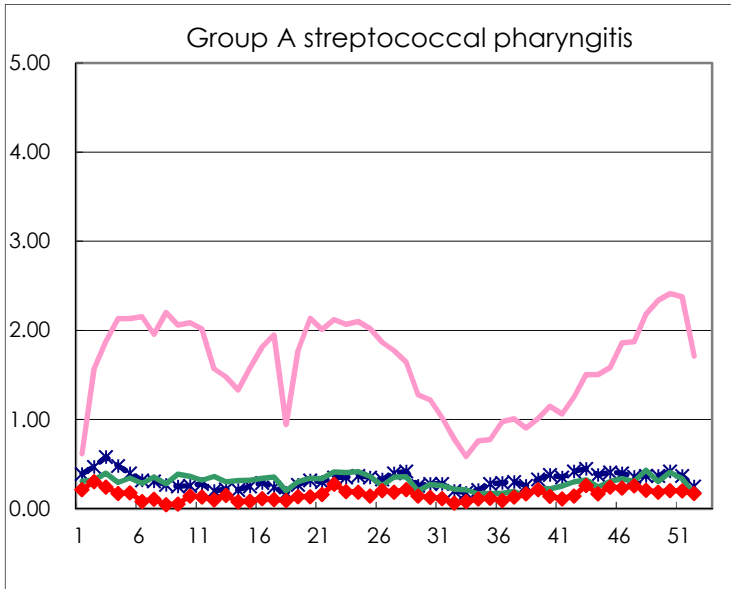
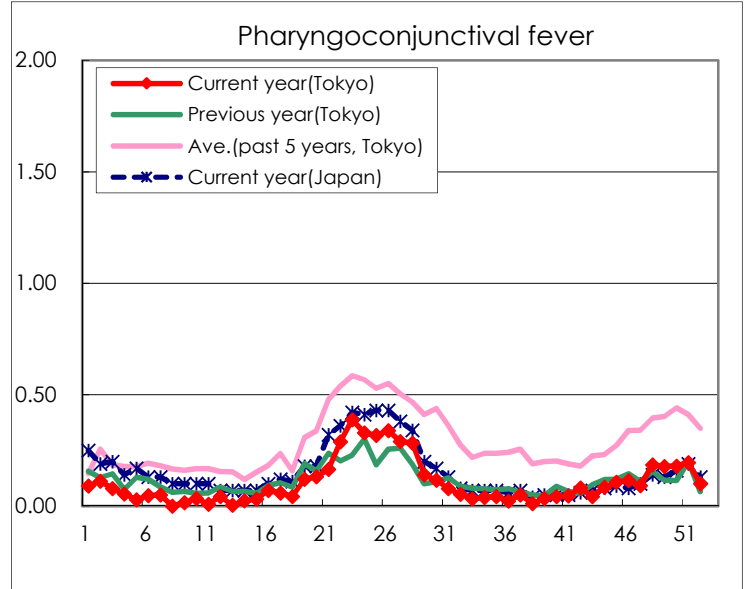
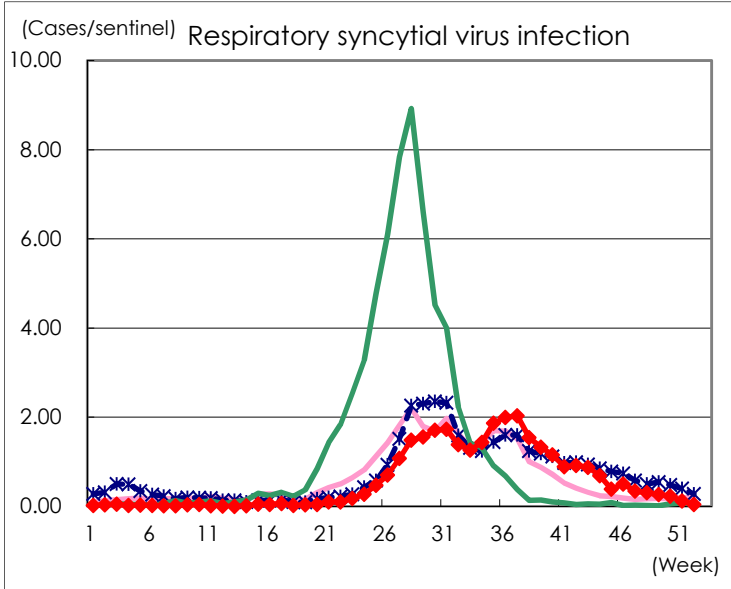
Category	Diseases	Tokyo					Japan	
		49th	50th	51st	52nd	Cum 2022	52nd	Cum 2022
V	Amebiasis	2	1	3	3	116	9	529
	Viral hepatitis(excluding hepatitis A and E)	1	1		1	35	3	202
	CRE infection	3	3	3	3	205	21	1,965
	Acute Flaccid Paralysis (excluding Acute poliomyelitis)					4	1	40
	Acute encephalitis(excluding JE and WNE)					28	3	386
	Cryptosporidiosis					2		7
	Creutzfeldt-Jakob disease					18	2	166
	Severe invasive streptococcal infections(TSLS)	1	3	1	2	106	12	732
	Acquired immunodeficiency syndrome (AIDS)	7	4	6	7	286	8	863
	Giardiasis					12		32
	Invasive <i>Haemophilus influenzae</i> disease		1	2		19	3	206
	Invasive meningococcal disease					1		8
	Invasive pneumococcal disease	4	4	2	3	140	18	1,319
	Varicella (limited to hospitalized case)	3				49	4	325
	Congenital rubella syndrome							
	Syphilis	80	62	69	67	3,651	114	12,966
	Disseminated cryptococcosis				1	15	1	153
	Tetanus					6		95
	Vancomycin-resistant <i>S. aureus</i> infection							
	Vancomycin-resistant <i>Enterococcus</i> infection					6	3	131
	Pertussis			2		55	3	499
Rubella			1		4		15	
Measles							6	
MDRA infection					2		14	

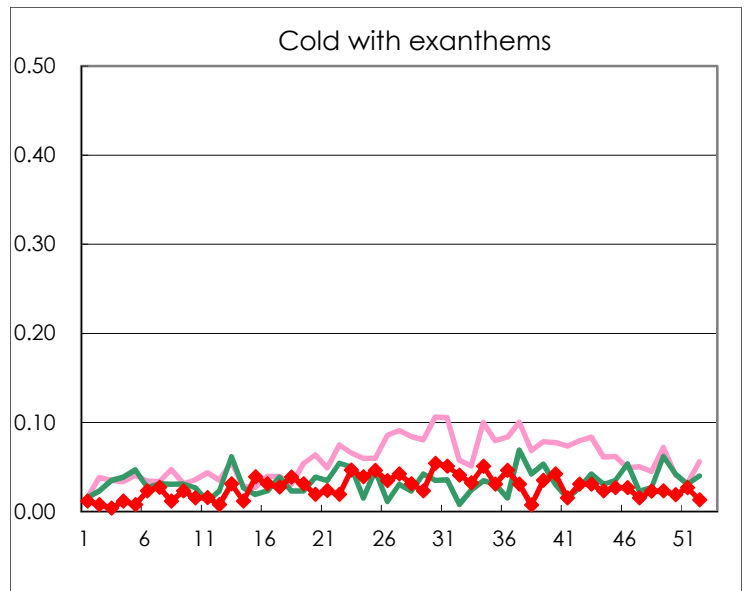
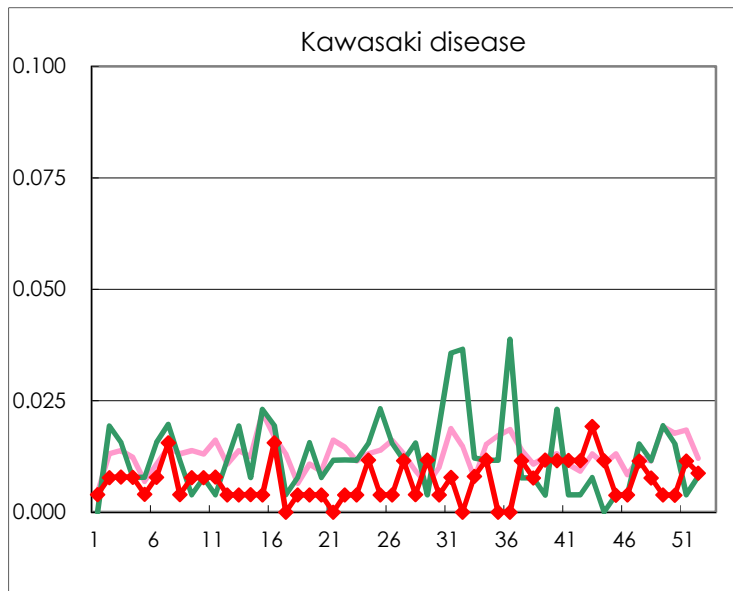
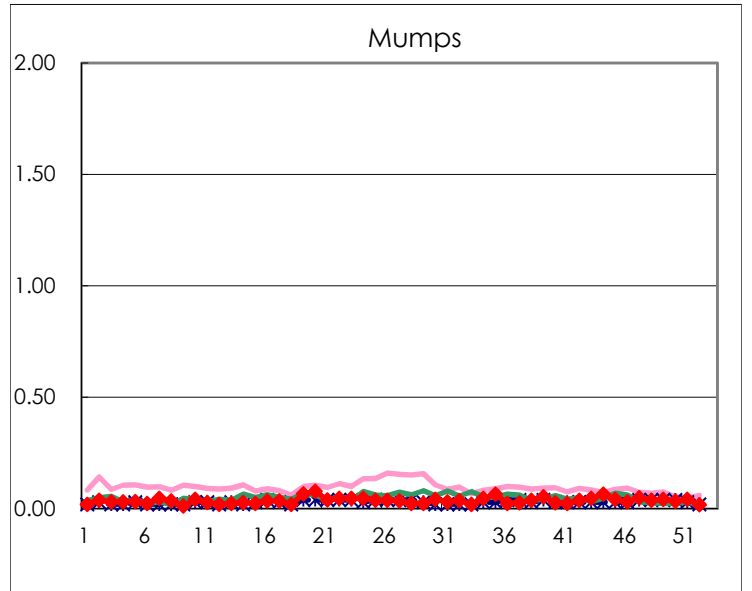
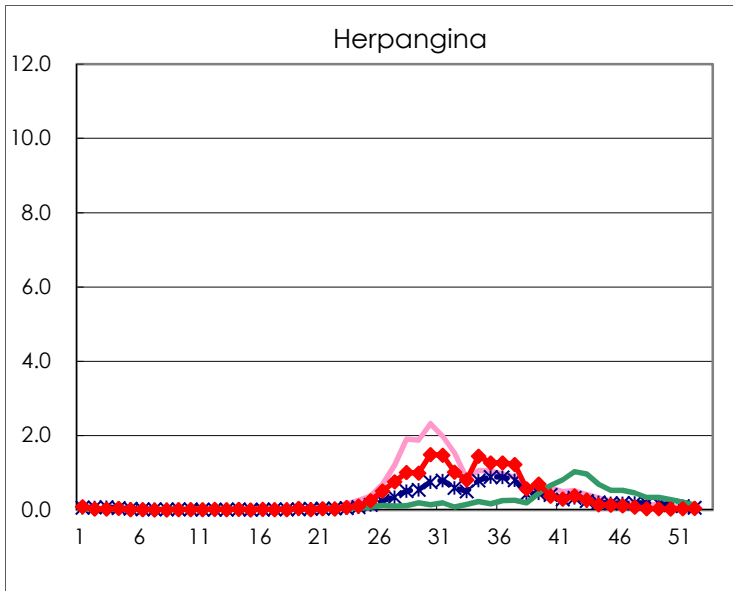
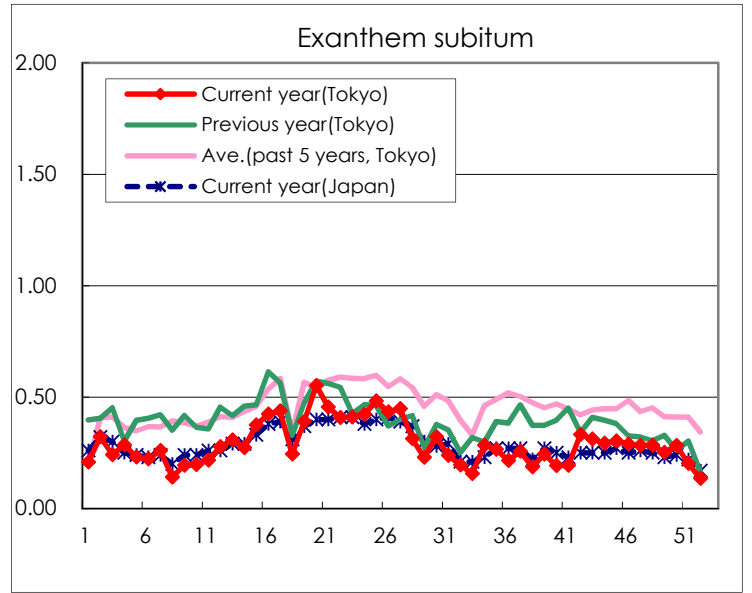
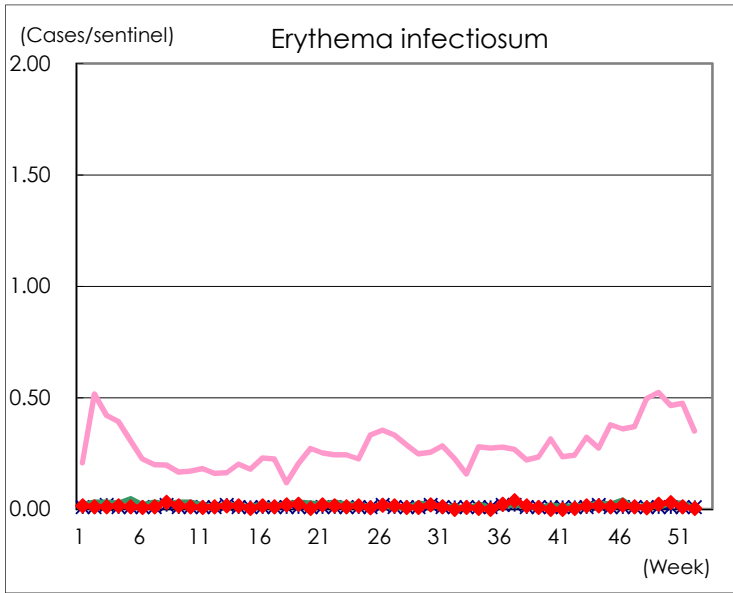
Number of patients with the diseases to be reported  
by the designated clinics and hospitals

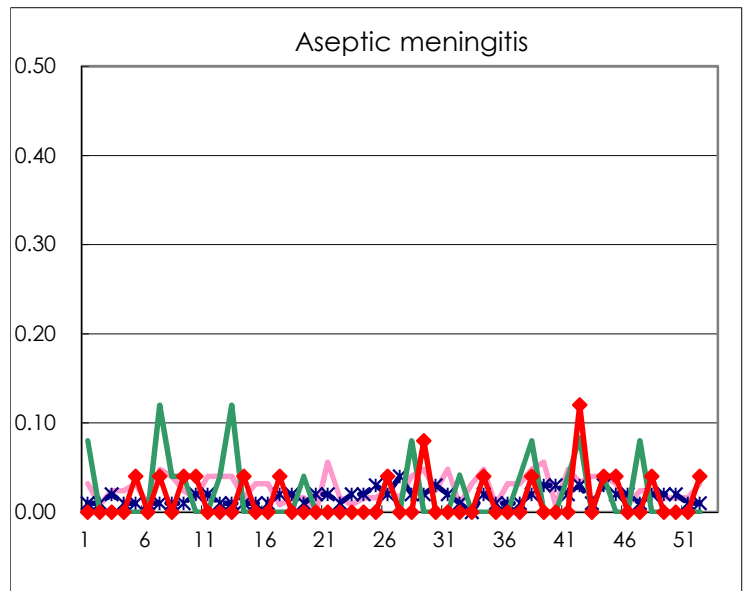
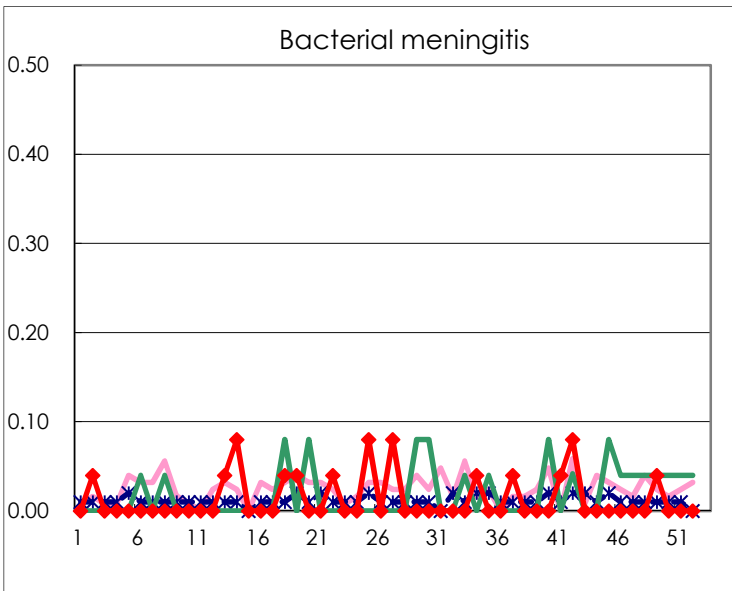
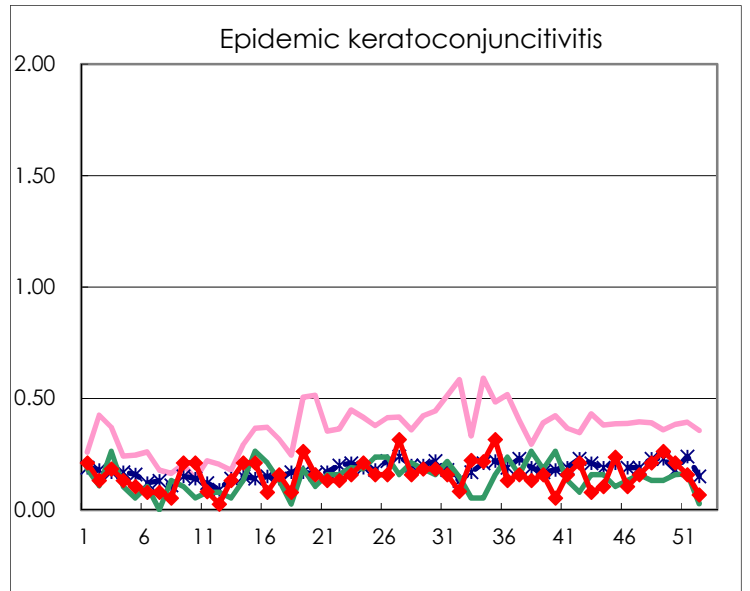
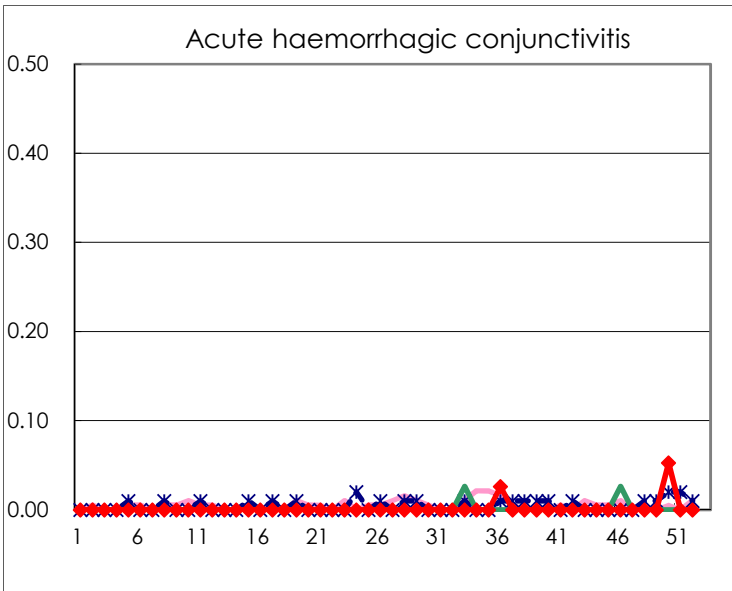
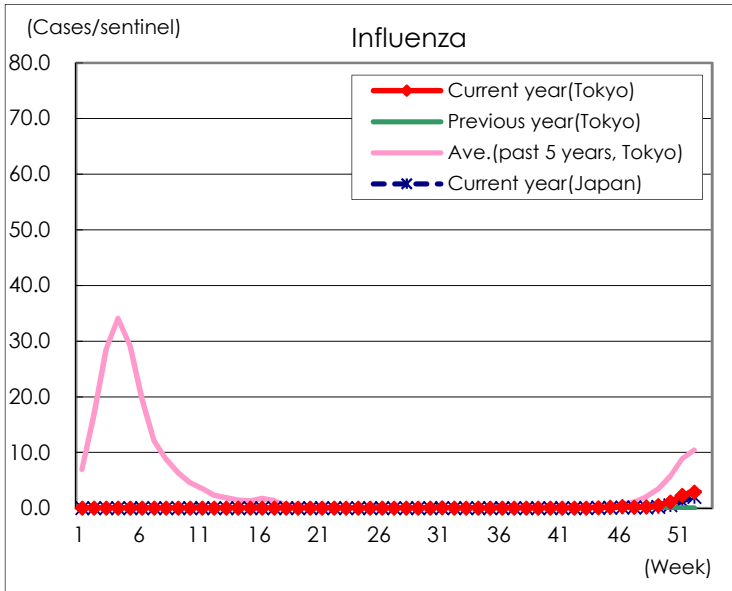
Diseases	Tokyo				
	49th	50th	51st	52nd	/sentinel
Respiratory syncytial virus infection	68	59	31	9	0.04
Pharyngoconjunctival fever	46	47	51	23	0.10
Group A streptococcal pharyngitis	48	53	52	39	0.17
Infectious gastroenteritis	1,969	2,496	2,777	1,631	7.12
Chickenpox	40	35	22	24	0.10
Hand, foot, and mouth disease	64	46	38	19	0.08
Erythema infectiosum	6	8	3	1	0.00
Exanthem subitum	65	74	53	31	0.14
Herpangina	9	7	8	10	0.04
Mumps	11	9	11	4	0.02
Kawasaki disease	1	1	3	2	0.01
Cold with exanthems	6	5	7	3	0.01
Influenza	203	462	940	1,039	2.92
Acute hemorrhagic conjunctivitis		2			
Epidemic keratoconjunctivitis	10	8	6	2	0.07
Bacterial meningitis	1				
Aseptic meningitis				1	0.04
Mycoplasma pneumonia				1	0.04
Chlamydial pneumonia (excluding psittacosis)		1			
Infectious gastroenteritis (only by Rotavirus)					
Influenza-Associated Hospitalizations		5	9	7	0.28

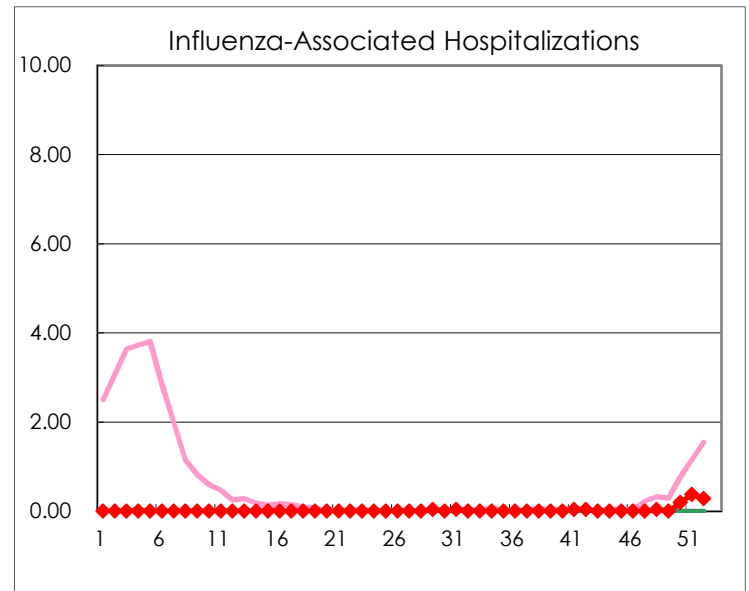
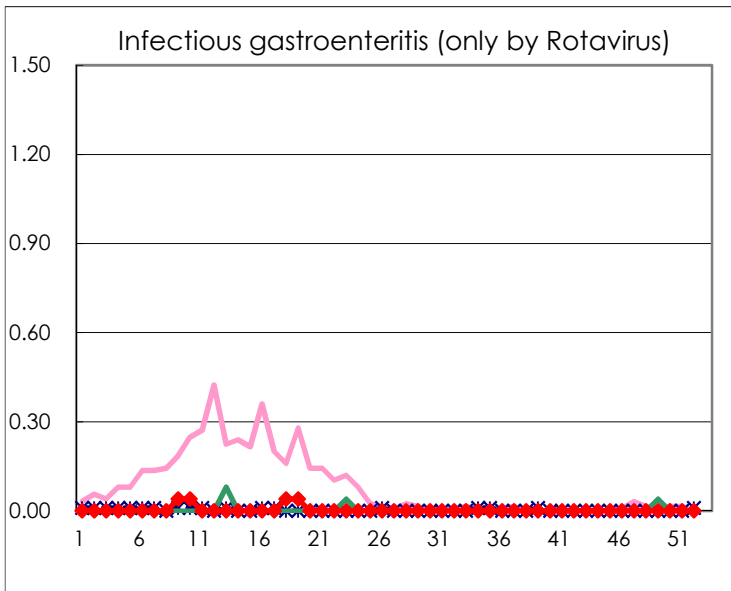
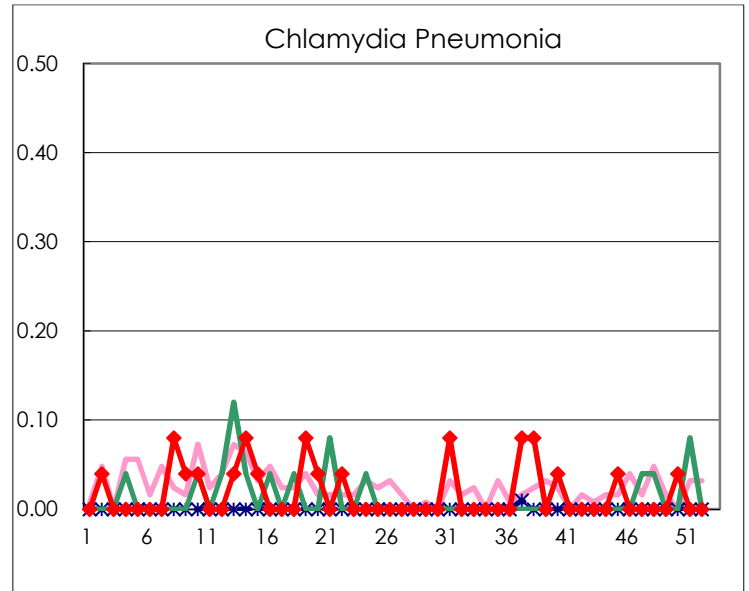
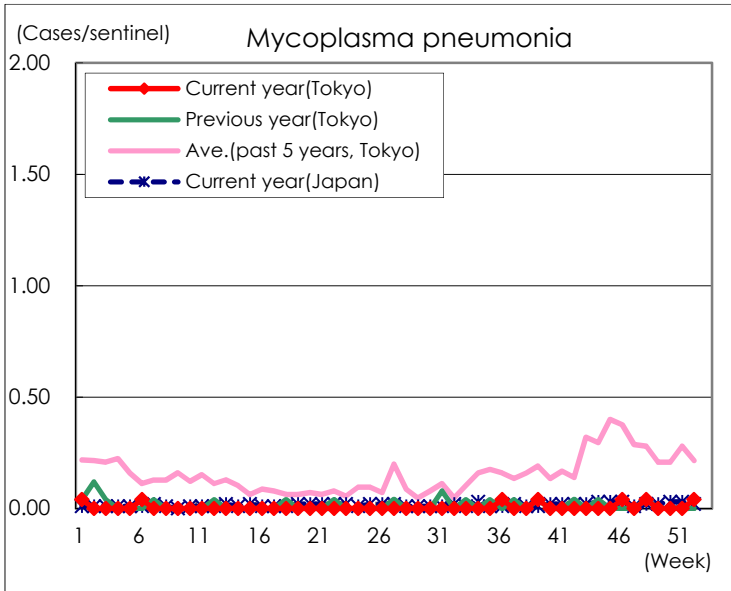
( Blank means 0. )

# Disease Trend Graph (weekly reported cases per sentinel in comparison)









Number of sentinel facilities for weekly reporting		
Types of sentinels	Number of sentinels	Sentinels having reported
Pediatric	264	229
Influenza	419	356
Ophthalmic	39	30
Specially-designated	25	25