
INFECTIOUS DISEASES WEEKLY REPORT

TOKYO IDWR

Tokyo Metropolitan Infectious Disease Surveillance Center

8 June 2023 / Number 22
(5/29 ~ 6/4)

Surveillance System in Tokyo, Japan

The infectious diseases which all physicians must report
All physicians must report to health centers the incidence of the diseases which are shown at page one. Health centers electronically report the individual cases to Tokyo Metropolitan Infectious Disease Surveillance Center.

The infectious diseases required to be reported by the sentinels
The numbers of patients who visit the sentinel clinics or hospitals during a week are reported to health centers in Tokyo. And they electronically report the numbers to Tokyo Metropolitan Infectious Disease Surveillance Center. We have about 500 sentinel clinics and hospitals in Tokyo.

Tokyo Metropolitan Institute of Public Health

TEL:81-3-3363-3213 FAX:81-3-5332-7365

e-mail:tmiph@section.metro.tokyo.jp

URL:idsc.tmiph.metro.tokyo.lg.jp/

Number of patients with the diseases which all physicians must report

Category	Diseases	Tokyo					Japan	
		19th	20th	21st	22nd	Cum 2023	22nd	Cum 2023
I	Ebola hemorrhagic fever							
	Crimean-Congo hemorrhagic fever							
	Smallpox							
	South American hemorrhagic fever							
	Plague							
	Marburg disease							
	Lassa fever							
II	Acute poliomyelitis							
	Tuberculosis	41	38	47	41	787	251	5,535
	Diphtheria							
	Severe Acute Respiratory Syndrome(SARS)							
	Middle East Respiratory Syndrome (MERS)							
	Avian influenza H5N1							
	Avian influenza H7N9							
III	Cholera					1		1
	Shigellosis				1	3	2	12
	Enterohemorrhagic Escherichia coli infection	2	2	9	12	73	77	655
	Typhoid fever					2		17
	Paratyphoid fever					1		5
IV	Hepatitis E	8	4		5	94	7	255
	West Nile fever							
	Hepatitis A				1	5	1	26
	Echinococcosis							5
	Mpox	10	10	5	2	127	6	166
	Yellow fever							
	Psittacosis						1	5
	Omsk hemorrhagic fever							
	Relapsing fever							4
	Kyasanur forest disease							
	Q fever							
	Rabies							
	Coccidioidomycosis							1
	Zika virus infection							
	Severe Fever with Thrombocytopenia Syndrome						10	65
	Hemorrhagic fever with renal syndrome							
	Western equine encephalitis							
	Tick-borne encephalitis							
	Anthrax							
	Chikungunya fever							1
	Scrub typhus(Tsutsugamushi disease)					4	2	89
	Dengue fever			2		8		28
	Eastern equine encephalitis							
	Avian influenza (excluding H5N1 and H7N9)							
	Nipah virus infection							
	Japanese spotted fever						10	94
	Japanese encephalitis							
	Hantavirus pulmonary syndrome							
	Herpes B virus infection							
	Glanders							
	Brucellosis							1
	Venezuelan equine encephalitis							
	Hendra virus infection							
Epidemic typhus								
Botulism								
Malaria					3		6	
Tularemia								
Lyme disease							2	
Lyssavirus infection(excluding rabies)								
Rift valley fever								
Melioidosis								
Legionellosis		5	5	3	60	52	628	
Leptospirosis							4	
Rocky mountain spotted fever								

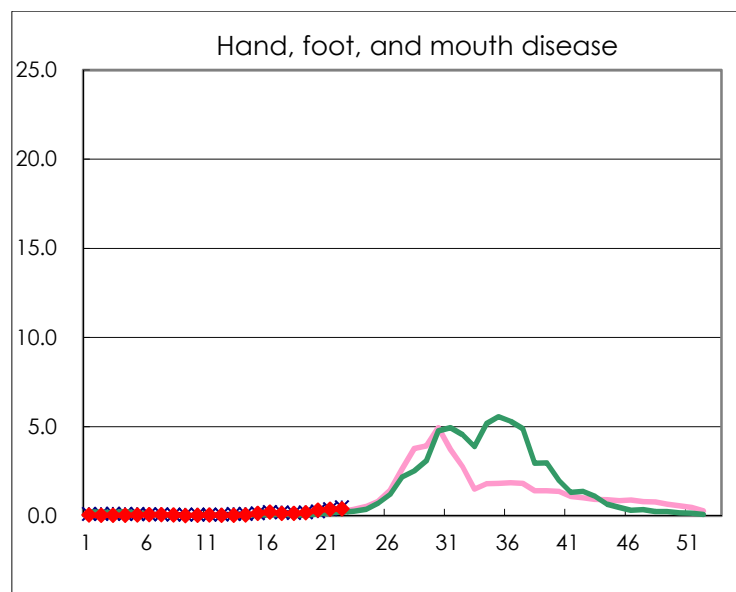
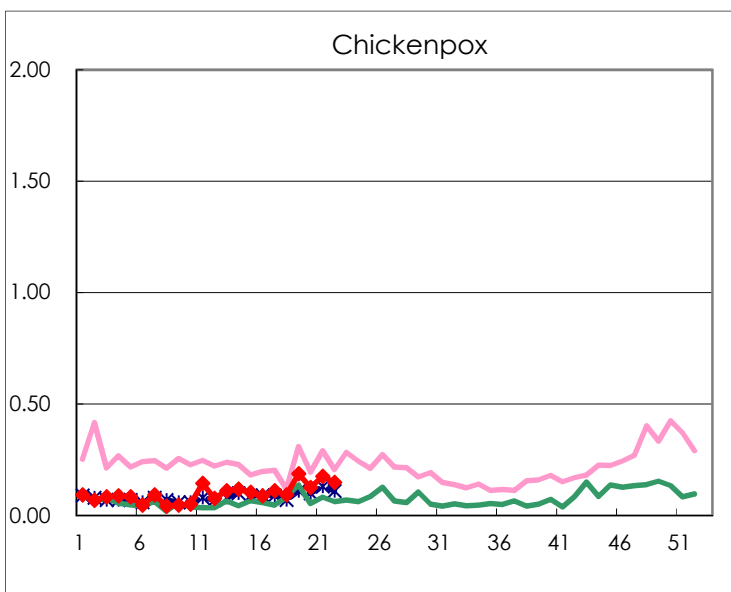
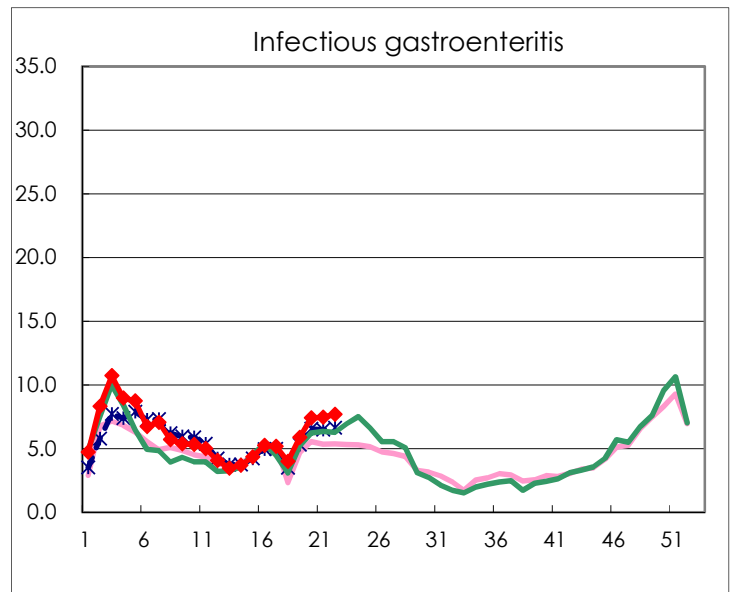
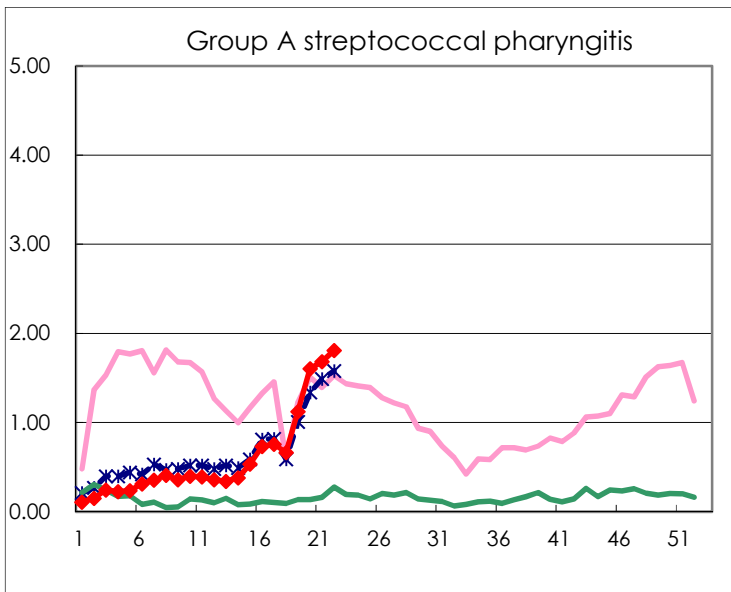
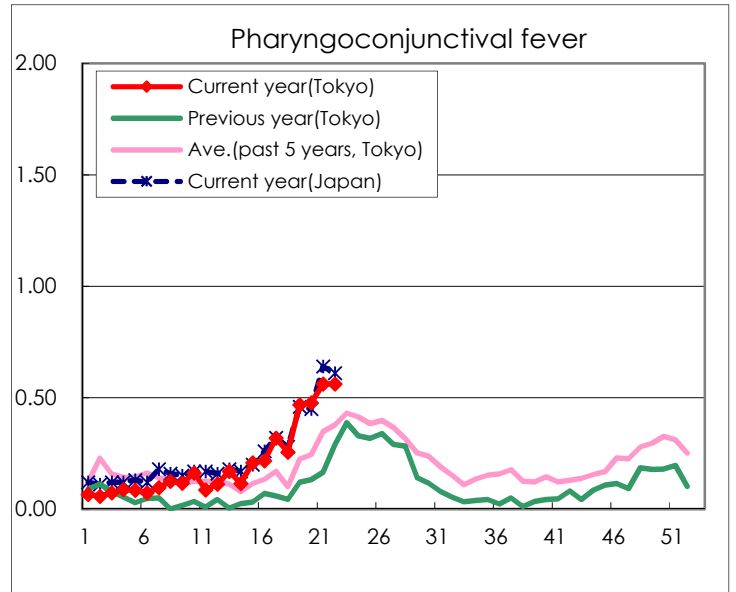
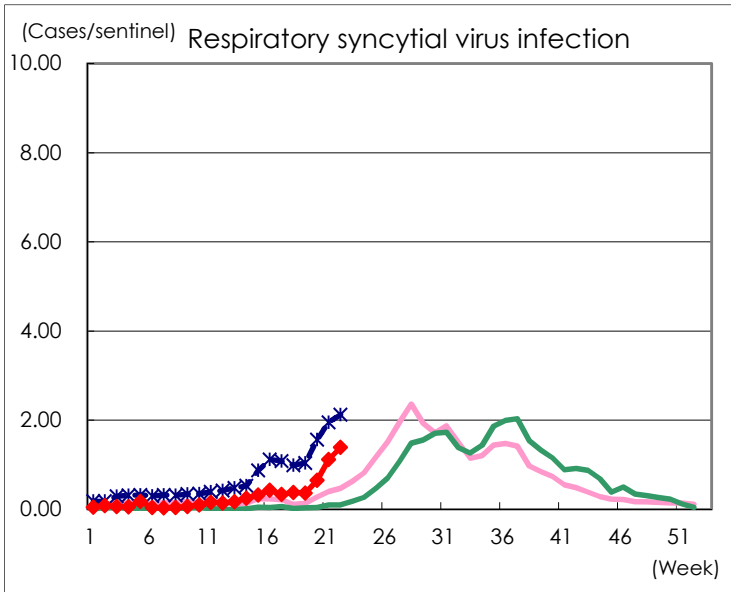
Category	Diseases	Tokyo					Japan	
		19th	20th	21st	22nd	Cum 2023	22nd	Cum 2023
V	Amebiasis	3	1	2	1	38	5	209
	Viral hepatitis(excluding hepatitis A and E)	3		2		25	2	109
	CRE infection	3	1	4	3	84	24	739
	Acute Flaccid Paralysis (excluding Acute poliomyelitis)			1		4	2	23
	Acute encephalitis(excluding JE and WNE)			1		15	8	207
	Cryptosporidiosis							2
	Creutzfeldt-Jakob disease			1		6	3	65
	Severe invasive streptococcal infections(TSLS)	2	3	2	5	54	12	349
	Acquired immunodeficiency syndrome (AIDS)	3	9	5	7	125	15	399
	Giardiasis	1				6		24
	Invasive <i>Haemophilus influenzae</i> disease		1	1		13	14	182
	Invasive meningococcal disease							5
	Invasive pneumococcal disease	8	5	4	1	79	21	821
	Varicella (limited to hospitalized case)	2	2	2	3	32	7	155
	Congenital rubella syndrome							
	Syphilis	74	54	65	87	1,577	234	6,108
	Disseminated cryptococcosis	1				10	1	82
	Tetanus					1	1	21
	Vancomycin-resistant <i>S. aureus</i> infection							
	Vancomycin-resistant <i>Enterococcus</i> infection	1				7	1	62
	Pertussis	5	4	2	1	35	20	311
Rubella					2		4	
Measles	2	2			5	3	14	
MDRA infection	1				1		6	

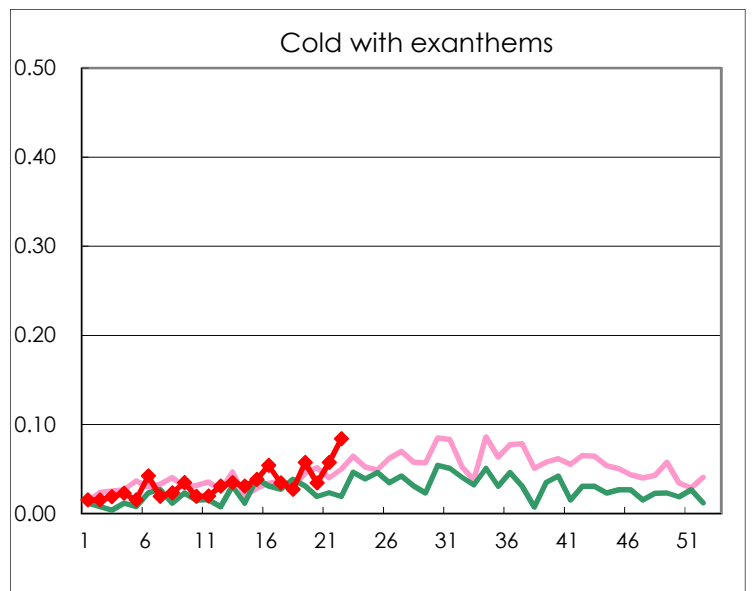
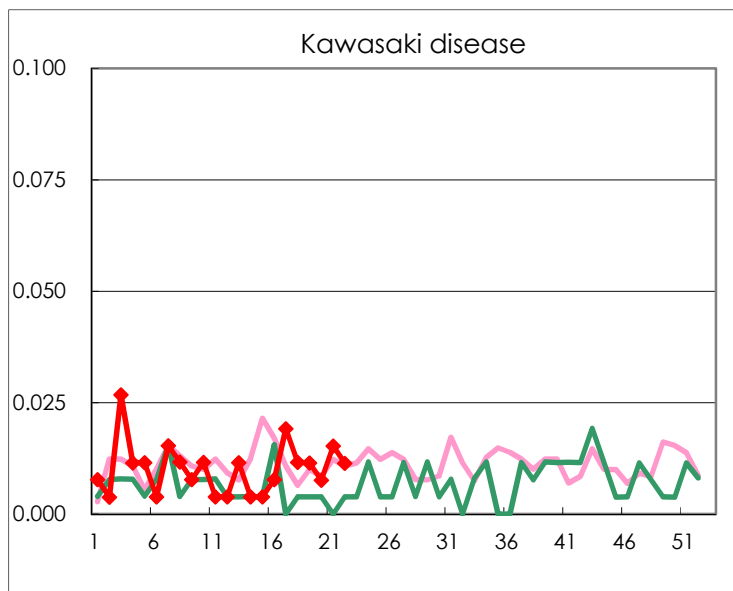
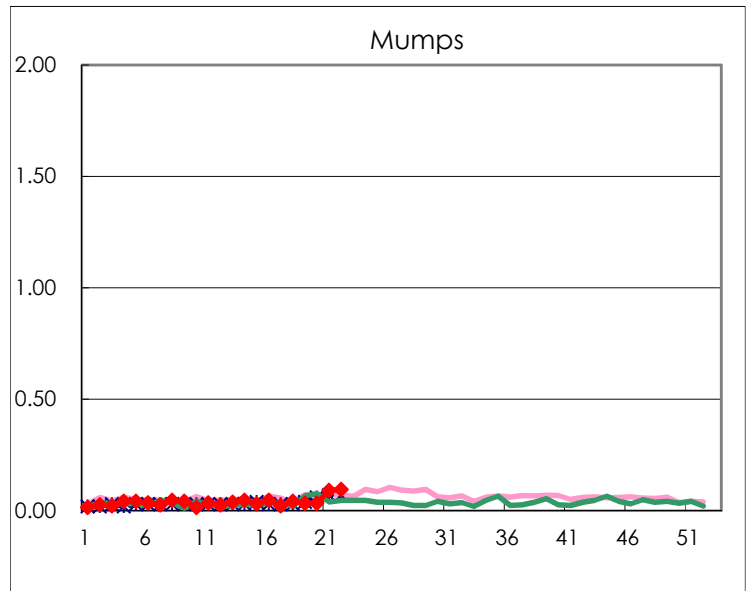
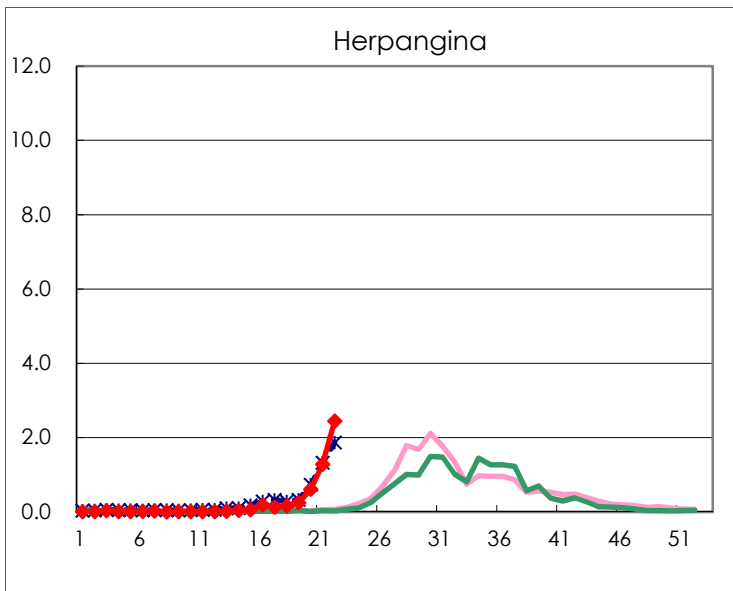
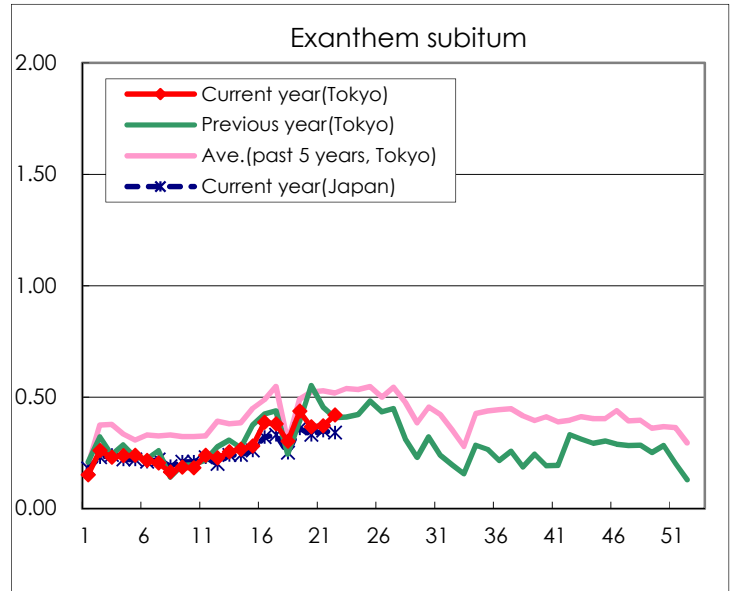
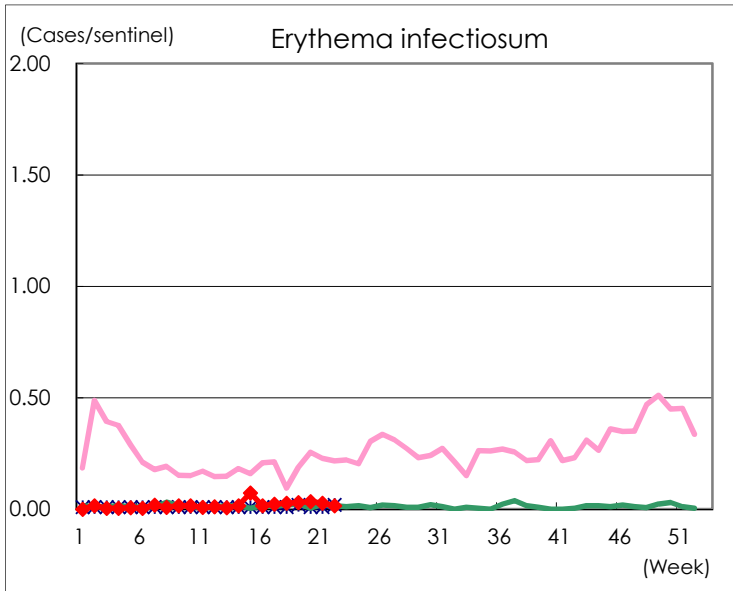
Number of patients with the diseases to be reported
by the designated clinics and hospitals

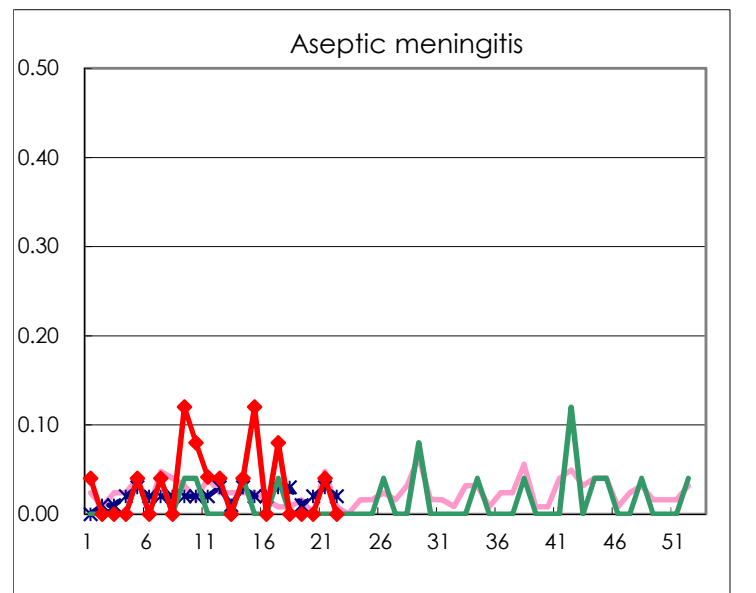
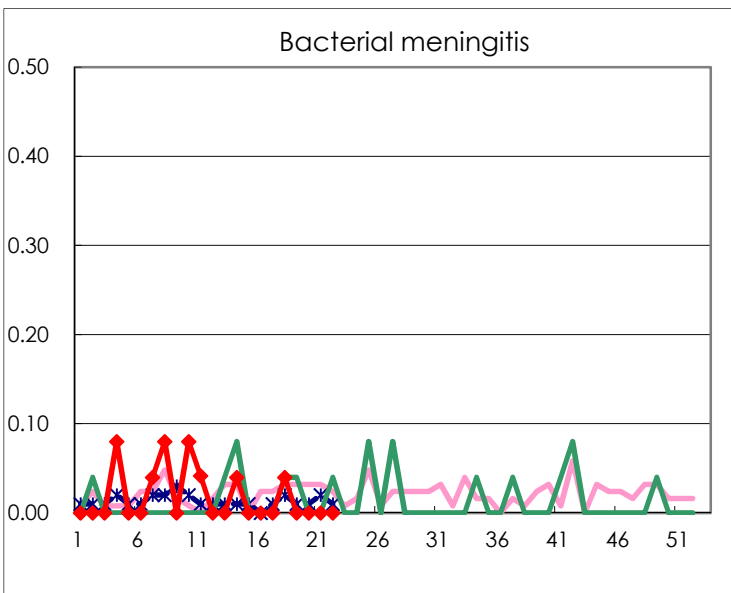
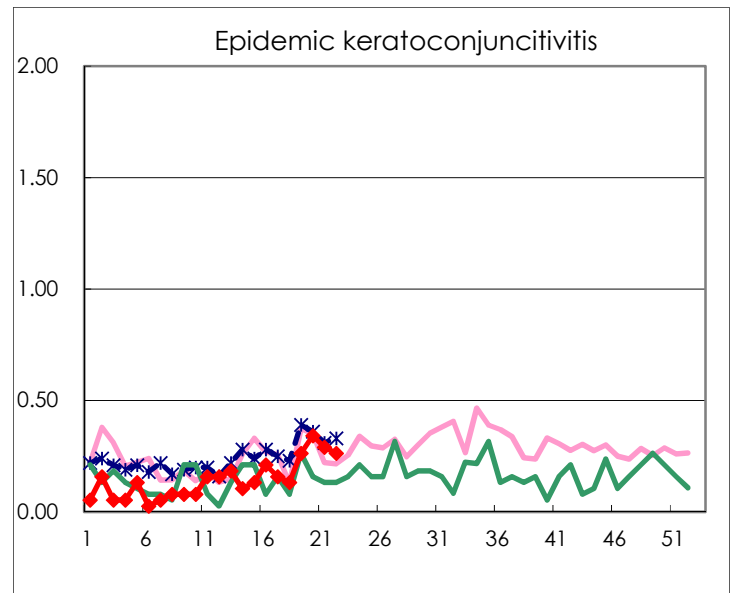
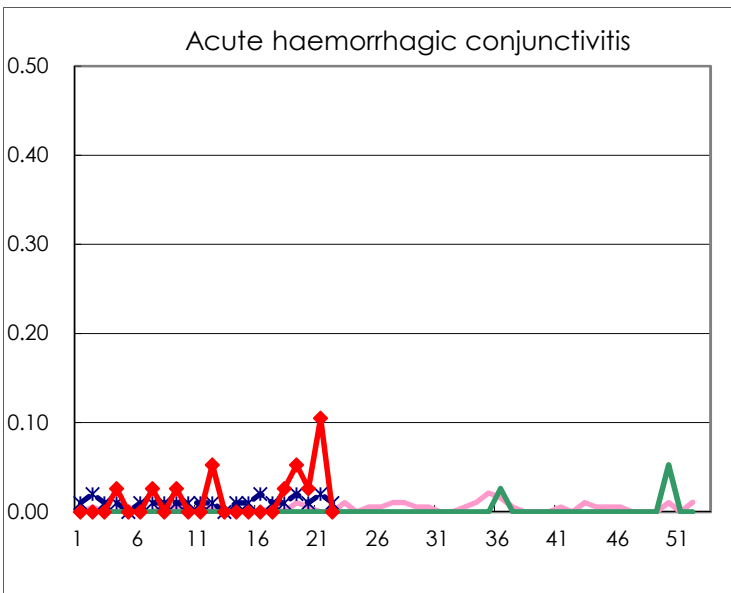
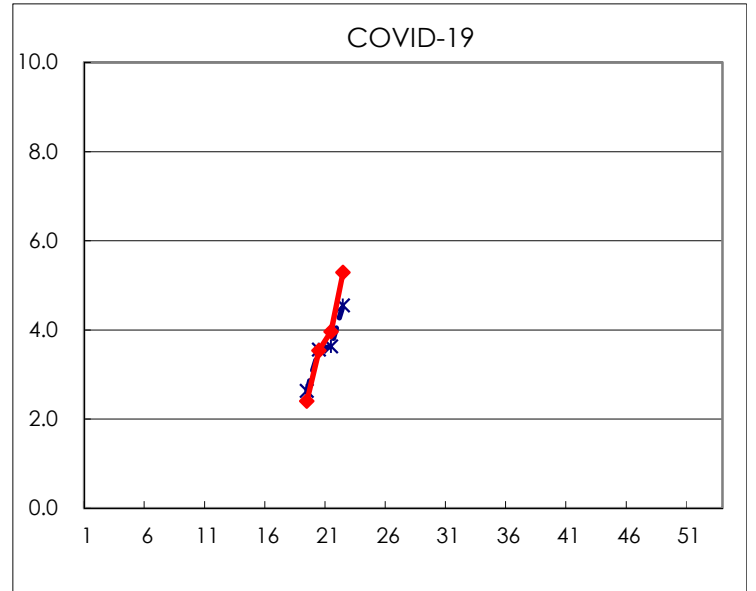
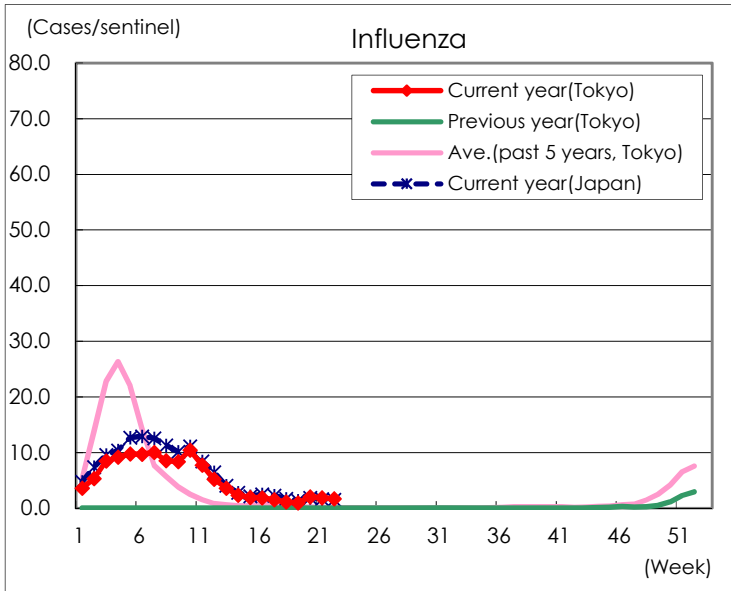
Diseases	Tokyo				
	19th	20th	21st	22nd	/sentinel
Respiratory syncytial virus infection	95	171	293	364	1.39
Pharyngoconjunctival fever	122	125	147	147	0.56
Group A streptococcal pharyngitis	293	420	441	474	1.81
Infectious gastroenteritis	1,532	1,937	1,955	2,013	7.68
Chickenpox	49	33	46	39	0.15
Hand, foot, and mouth disease	44	80	95	102	0.39
Erythema infectiosum	8	9	7	4	0.02
Exanthem subitum	114	96	97	110	0.42
Herpangina	64	159	336	640	2.44
Mumps	9	9	24	25	0.10
Kawasaki disease	3	2	4	3	0.01
Cold with exanthems	15	9	15	22	0.08
Influenza	397	838	785	706	1.69
COVID-19	996	1,472	1,649	2,207	5.29
Acute hemorrhagic conjunctivitis	2	1	4		
Epidemic keratoconjunctivitis	10	13	11	10	0.26
Bacterial meningitis					
Aseptic meningitis			1		
Mycoplasma pneumonia	1	1	1	3	0.12
Chlamydial pneumonia (excluding psittacosis)					
Infectious gastroenteritis (only by Rotavirus)					
Influenza-Associated Hospitalizations	2	4	2	3	0.12

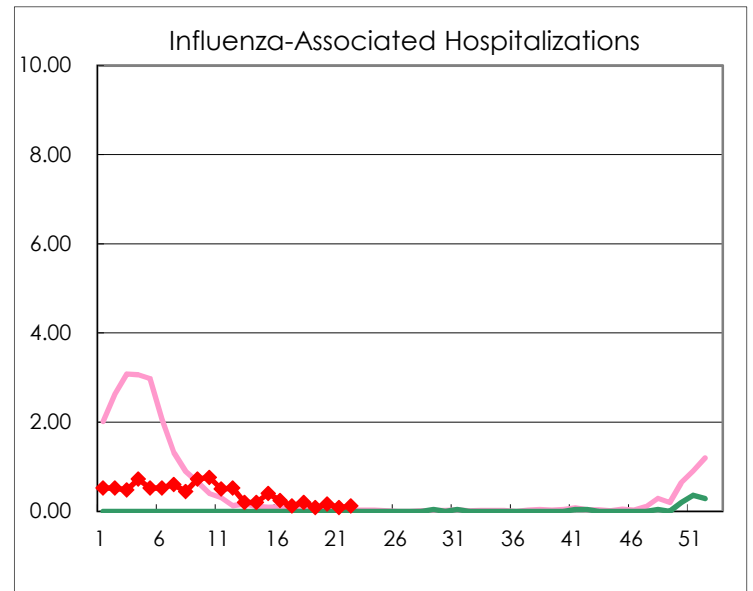
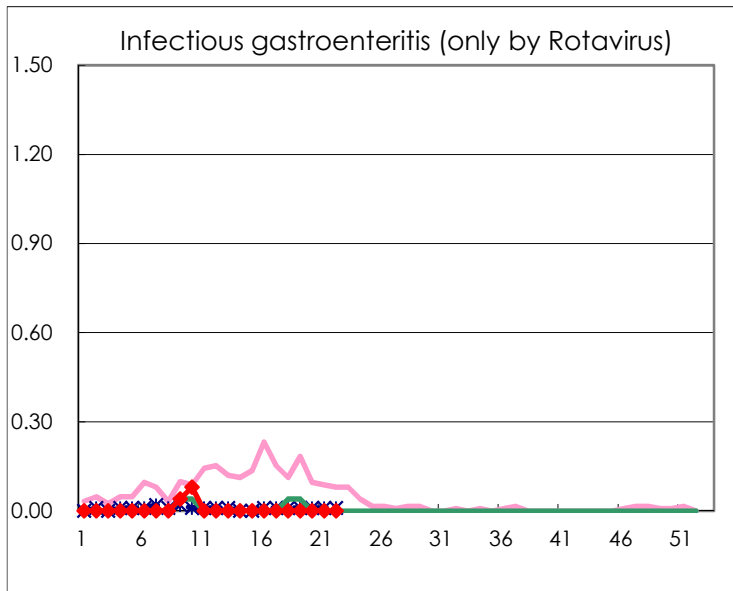
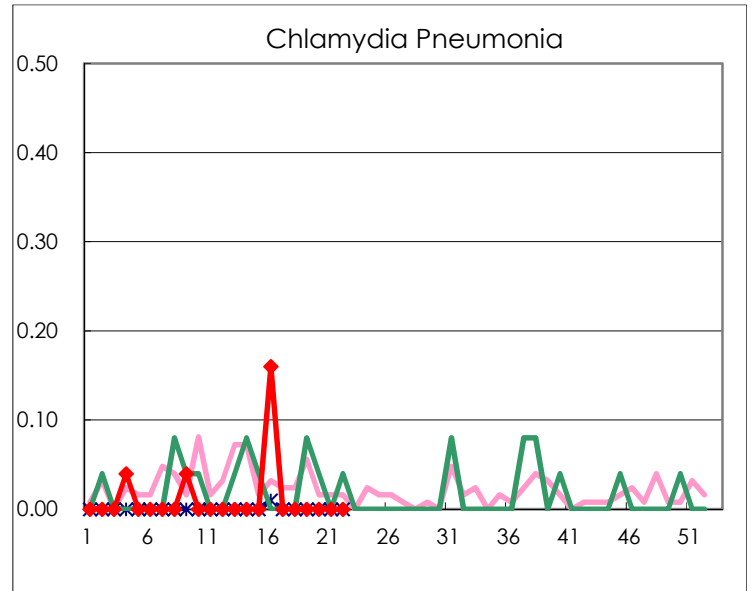
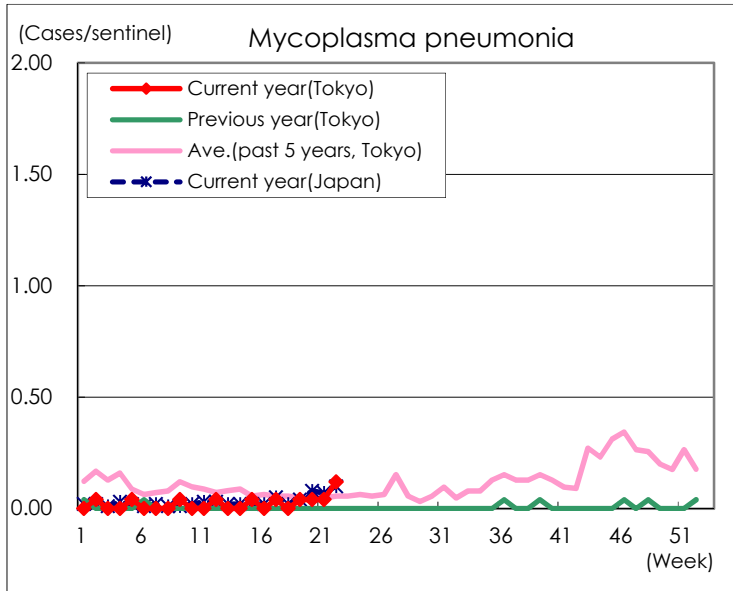
(Blank means 0.)

Disease Trend Graph (weekly reported cases per sentinel in comparison)









Number of sentinel facilities for weekly reporting		
Types of sentinels	Number of sentinels	Sentinels having reported
Pediatric	264	262
Influenza	419	417
Ophthalmic	39	38
Specially-designated	25	25