

---

INFECTIOUS DISEASES WEEKLY REPORT

# TOKYO IDWR

Tokyo Metropolitan Infectious Disease Surveillance Center

**27 July 2023 / Number 29**  
**( 7/17 ~ 7/23 )**

## Surveillance System in Tokyo, Japan

The infectious diseases which all physicians must report  
All physicians must report to health centers the incidence of the diseases which are shown at page one. Health centers electronically report the individual cases to Tokyo Metropolitan Infectious Disease Surveillance Center.

The infectious diseases required to be reported by the sentinels  
The numbers of patients who visit the sentinel clinics or hospitals during a week are reported to health centers in Tokyo. And they electronically report the numbers to Tokyo Metropolitan Infectious Disease Surveillance Center. We have about 500 sentinel clinics and hospitals in Tokyo.

Tokyo Metropolitan Institute of Public Health

TEL:81-3-3363-3213 FAX:81-3-5332-7365

e-mail:tmiph@section.metro.tokyo.jp

URL:idsc.tmiph.metro.tokyo.lg.jp/

---

Number of patients with the diseases which all physicians must report

Category	Diseases	Tokyo					Japan	
		26th	27th	28th	29th	Cum 2023	29th	Cum 2023
I	Ebola hemorrhagic fever							
	Crimean-Congo hemorrhagic fever							
	Smallpox							
	South American hemorrhagic fever							
	Plague							
	Marburg disease							
	Lassa fever							
II	Acute poliomyelitis							
	Tuberculosis	34	34	42	34	1,057	221	7,523
	Diphtheria							
	Severe Acute Respiratory Syndrome(SARS)							
	Middle East Respiratory Syndrome (MERS)							
	Avian influenza H5N1							
	Avian influenza H7N9							
III	Cholera					1		1
	Shigellosis		1			5	2	23
	Enterohemorrhagic Escherichia coli infection	11	9	16	8	167	100	1,475
	Typhoid fever					4	1	23
	Paratyphoid fever					1		6
IV	Hepatitis E	5	2	5	2	116	7	343
	West Nile fever							
	Hepatitis A			1		6	2	32
	Echinococcosis						1	8
	Mpox	2		1		139	1	184
	Yellow fever							
	Psittacosis						1	7
	Omsk hemorrhagic fever							
	Relapsing fever							10
	Kyasanur forest disease							
	Q fever							
	Rabies							
	Coccidioidomycosis							1
	Zika virus infection							
	Severe Fever with Thrombocytopenia Syndrome						6	94
	Hemorrhagic fever with renal syndrome							
	Western equine encephalitis							
	Tick-borne encephalitis							
	Anthrax							
	Chikungunya fever							2
	Scrub typhus(Tsutsugamushi disease)					4		106
	Dengue fever		2	1	1	16	5	47
	Eastern equine encephalitis							
	Avian influenza (excluding H5N1 and H7N9)							
	Nipah virus infection							
	Japanese spotted fever					1	11	178
	Japanese encephalitis							
	Hantavirus pulmonary syndrome							
	Herpes B virus infection							
	Glanders							
	Brucellosis							1
	Venezuelan equine encephalitis							
	Hendra virus infection							
Epidemic typhus								
Botulism								
Malaria					4		8	
Tularemia								
Lyme disease					1	3	10	
Lyssavirus infection(excluding rabies)								
Rift valley fever								
Melioidosis								
Legionellosis	3	4	4	3	81	55	1,168	
Leptospirosis			1		1		8	
Rocky mountain spotted fever								

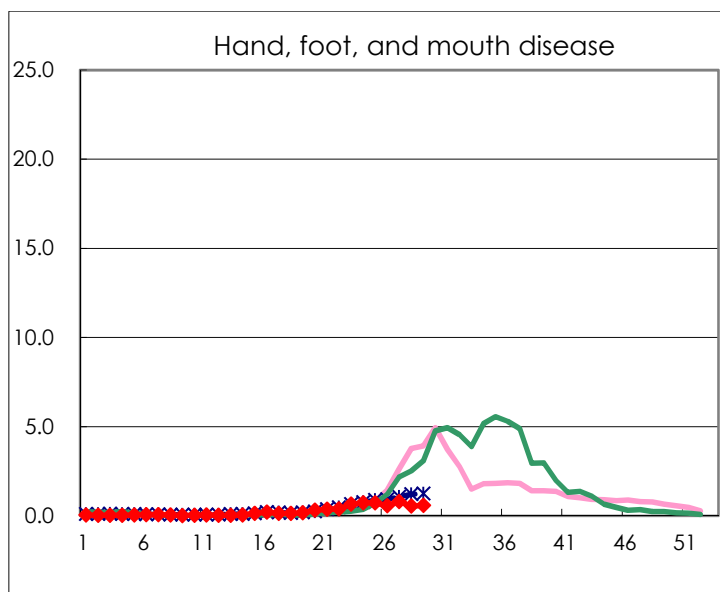
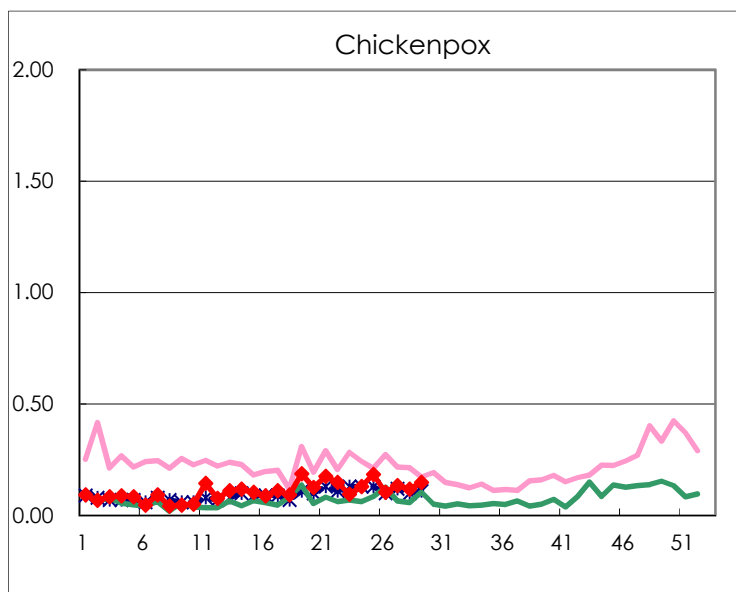
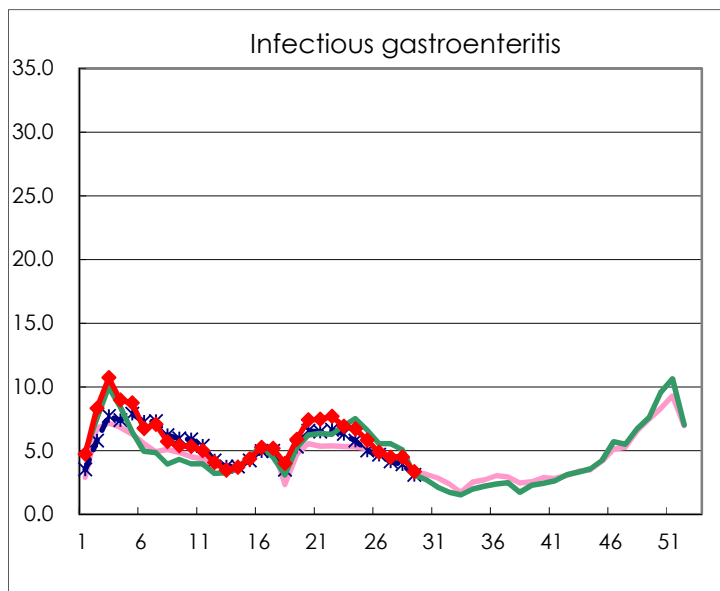
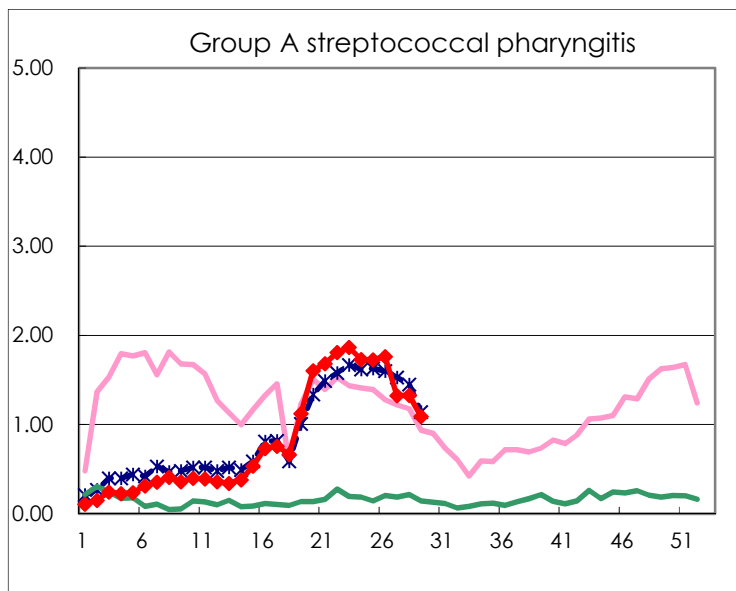
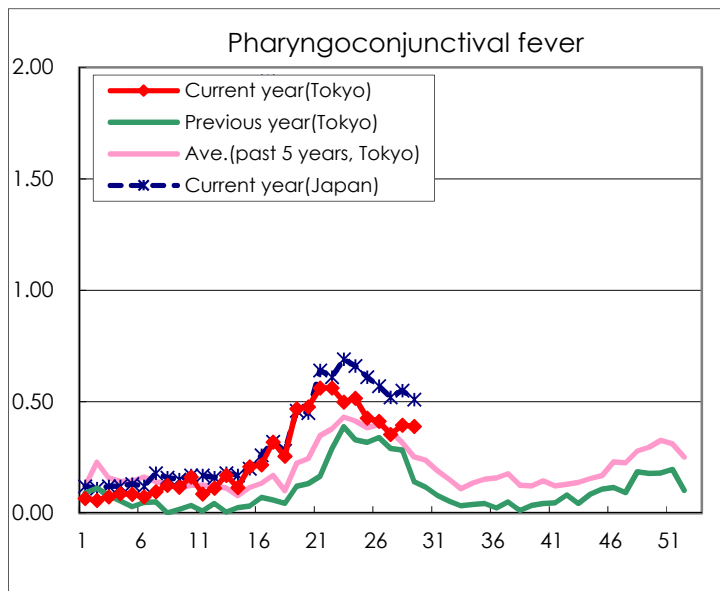
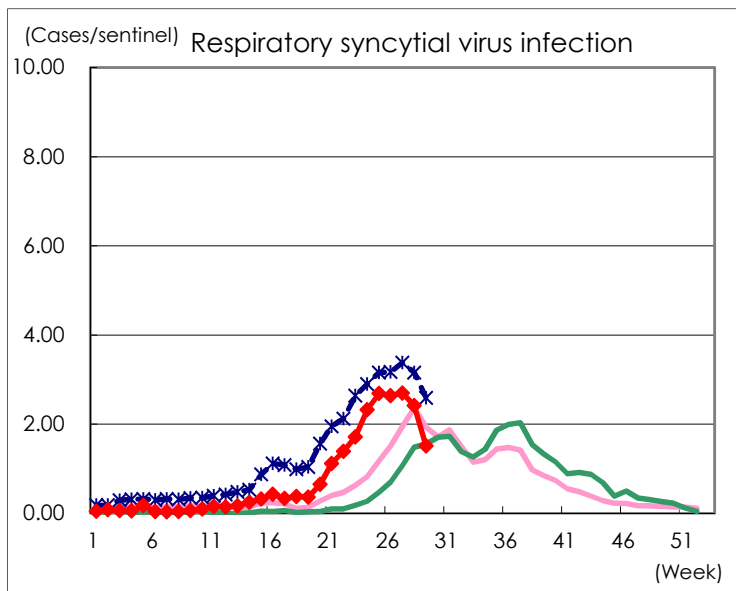
Category	Diseases	Tokyo					Japan	
		26th	27th	28th	29th	Cum 2023	29th	Cum 2023
V	Amebiasis	2	3	1	1	51	8	271
	Viral hepatitis(excluding hepatitis A and E)	2	1	3	1	34	1	147
	CRE infection	4	7	3	1	108	21	980
	Acute Flaccid Paralysis (excluding Acute poliomyelitis)					5		33
	Acute encephalitis(excluding JE and WNE)				2	18	8	284
	Cryptosporidiosis				1	1	1	5
	Creutzfeldt-Jakob disease					9		79
	Severe invasive streptococcal infections(TSLS)	1	4	2	4	68	10	469
	Acquired immunodeficiency syndrome (AIDS)	9	5	9	7	174	10	535
	Giardiasis			1		7	1	27
	Invasive <i>Haemophilus influenzae</i> disease		3	2	4	26	15	303
	Invasive meningococcal disease					1		10
	Invasive pneumococcal disease	3	4	6	2	103	25	1,016
	Varicella (limited to hospitalized case)			1		39	5	213
	Congenital rubella syndrome							
	Syphilis	79	61	72	57	2,087	179	8,349
	Disseminated cryptococcosis				1	12	1	99
	Tetanus					2	2	53
	Vancomycin-resistant <i>S. aureus</i> infection							
	Vancomycin-resistant <i>Enterococcus</i> infection	3				10	2	78
	Pertussis	5		5	7	75	27	508
Rubella					4		9	
Measles					6		22	
MDRA infection					1	1	10	

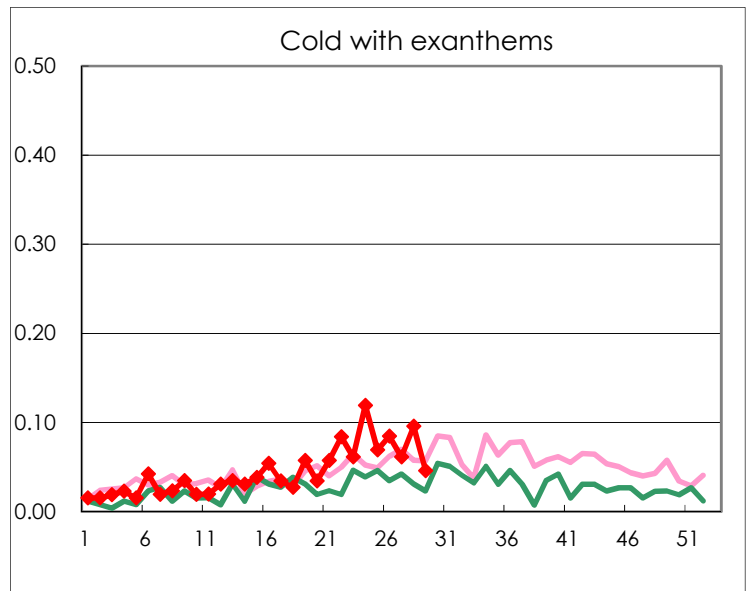
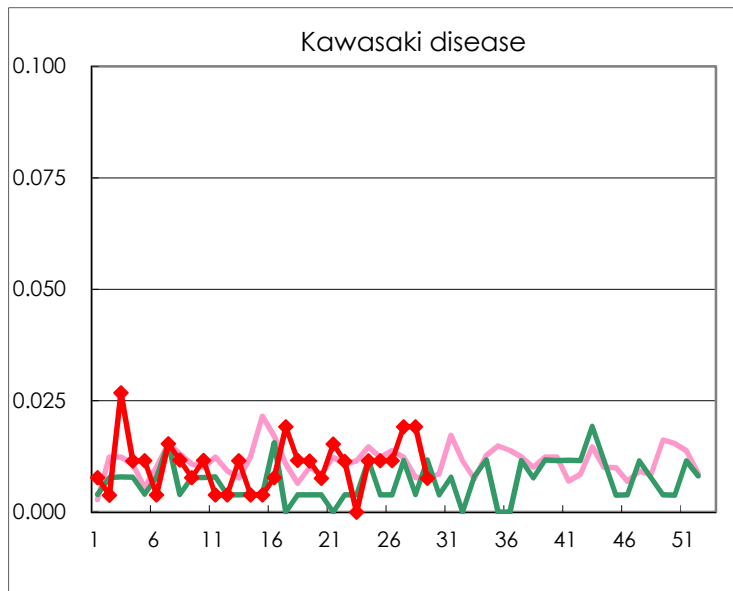
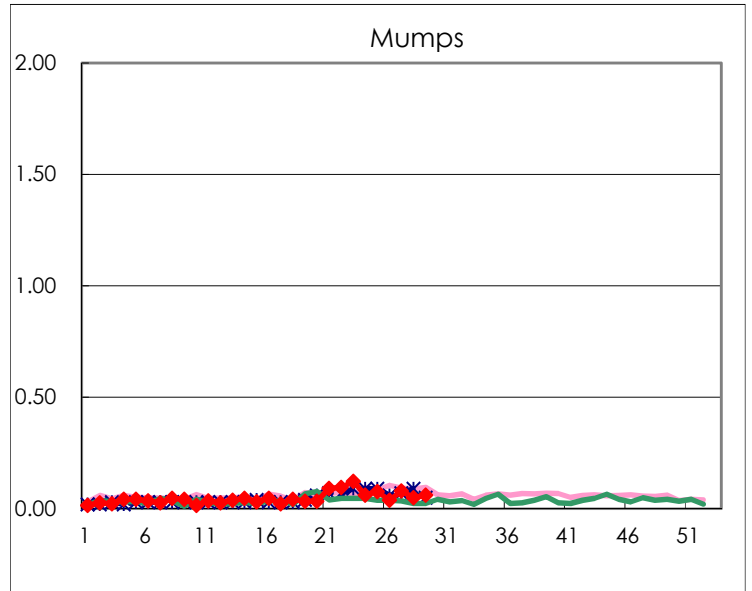
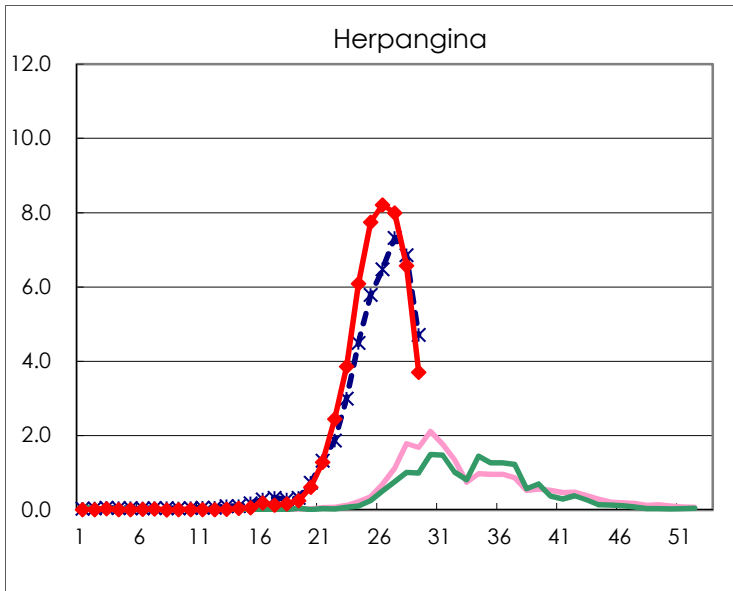
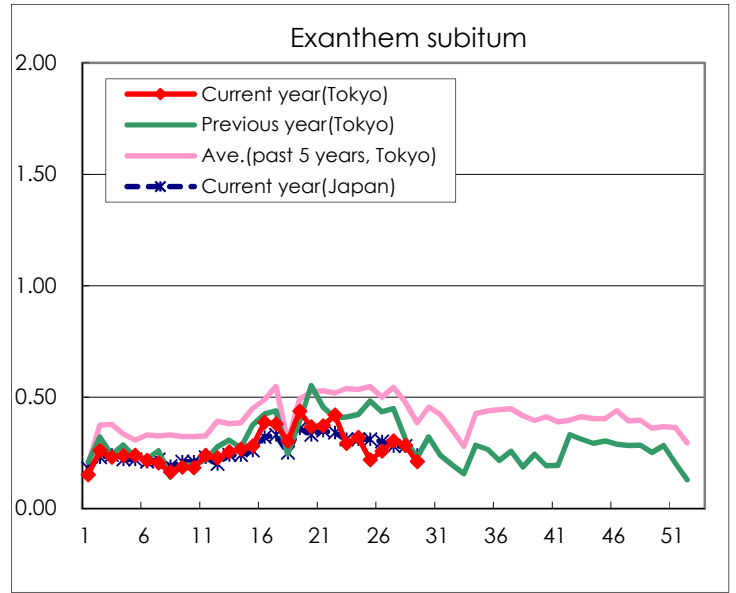
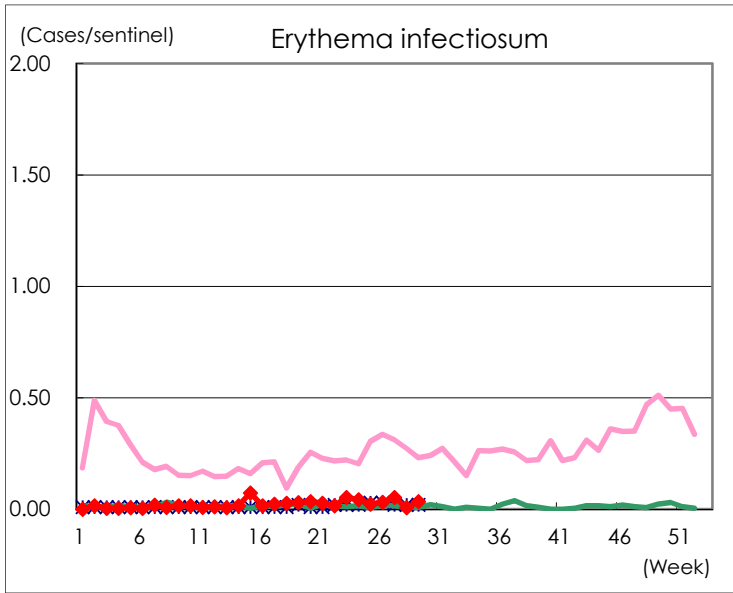
Number of patients with the diseases to be reported  
by the designated clinics and hospitals

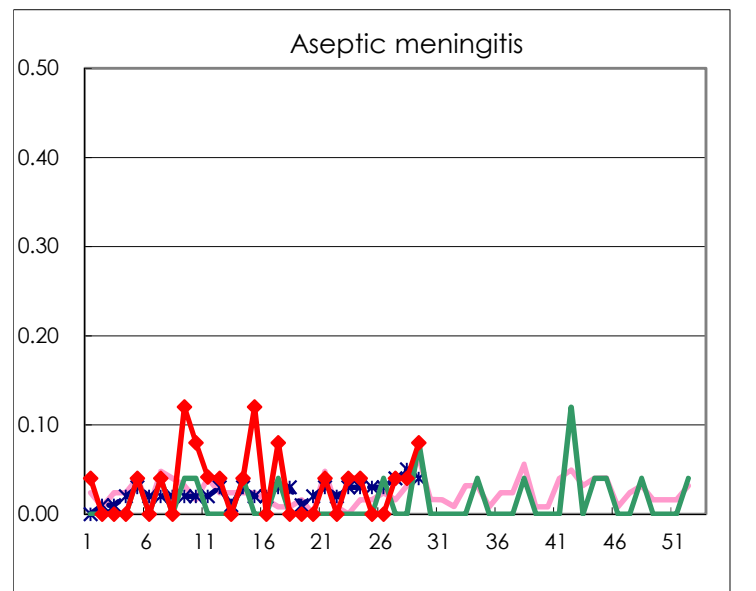
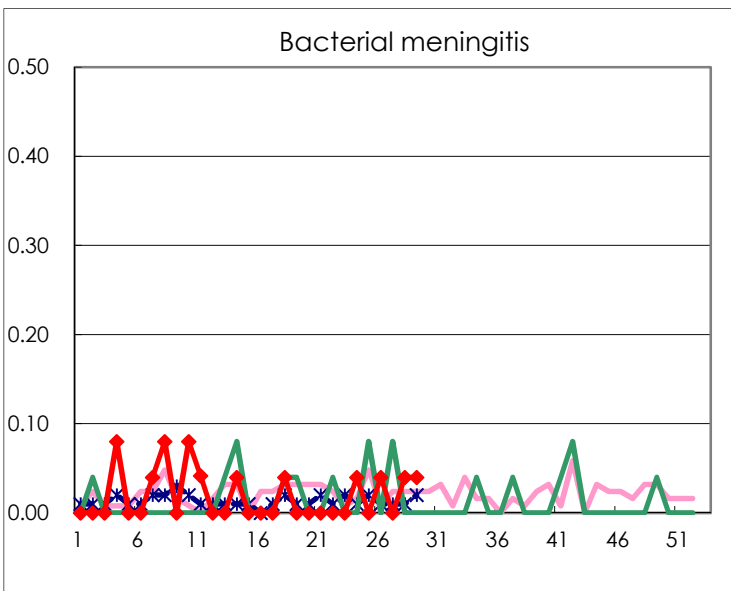
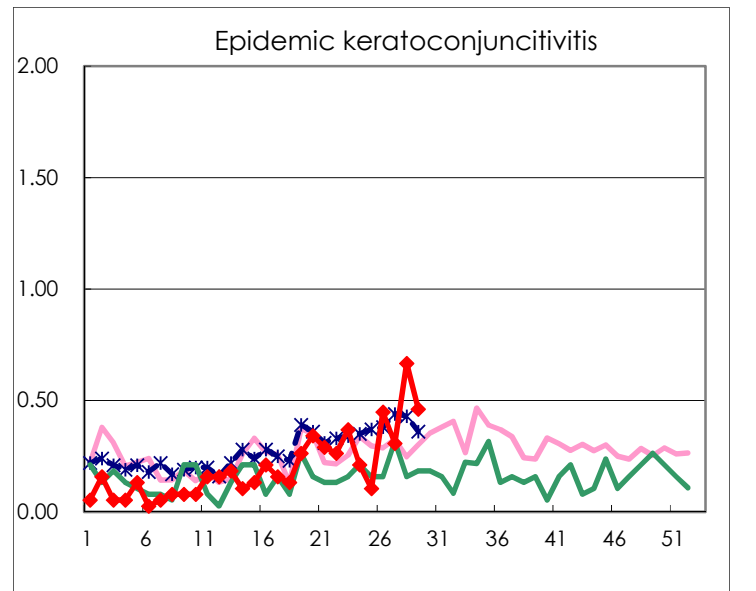
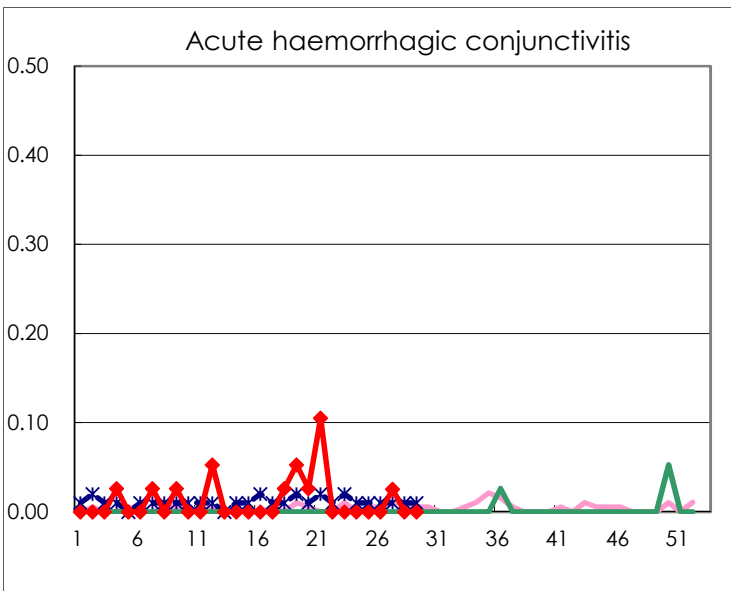
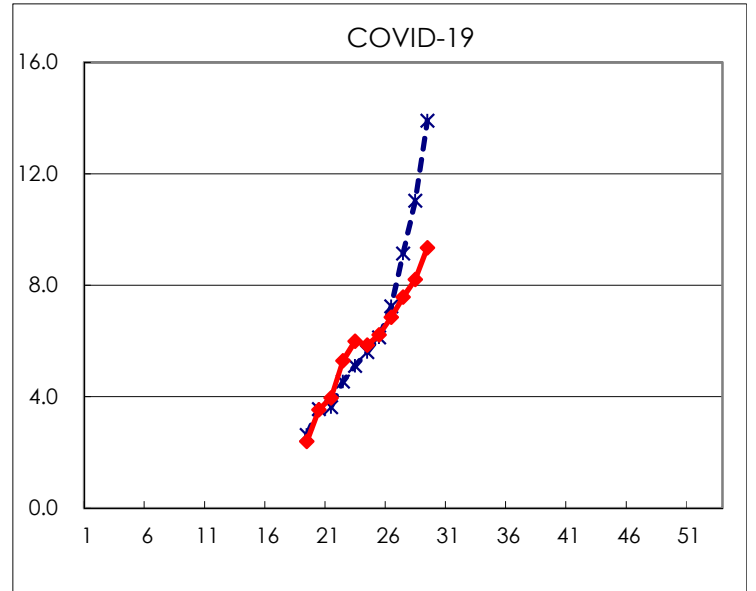
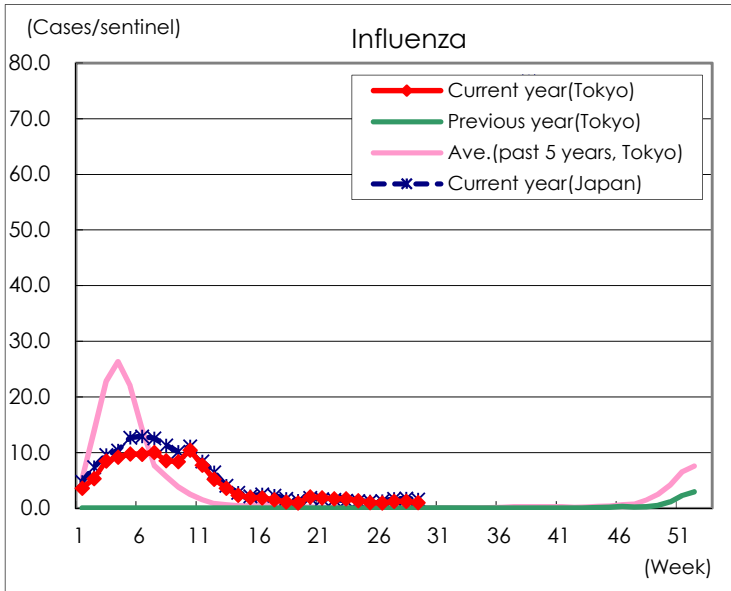
Diseases	Tokyo				
	26th	27th	28th	29th	/sentinel
Respiratory syncytial virus infection	686	704	630	397	1.52
Pharyngoconjunctival fever	107	92	103	102	0.39
Group A streptococcal pharyngitis	458	346	347	286	1.09
Infectious gastroenteritis	1,262	1,164	1,172	872	3.33
Chickenpox	27	35	31	39	0.15
Hand, foot, and mouth disease	145	207	144	151	0.58
Erythema infectiosum	8	14	2	9	0.03
Exanthem subitum	67	79	74	55	0.21
Herpangina	2,136	2,088	1,716	971	3.71
Mumps	10	21	13	16	0.06
Kawasaki disease	3	5	5	2	0.01
Cold with exanthems	22	16	25	12	0.05
Influenza	382	507	514	413	0.99
COVID-19	2,843	3,152	3,408	3,898	9.35
Acute hemorrhagic conjunctivitis		1			
Epidemic keratoconjunctivitis	17	12	26	18	0.46
Bacterial meningitis	1		1	1	0.04
Aseptic meningitis		1	1	2	0.08
Mycoplasma pneumonia		1		1	0.04
Chlamydial pneumonia (excluding psittacosis)					
Infectious gastroenteritis (only by Rotavirus)					
Influenza-Associated Hospitalizations	1	2	2	4	0.16

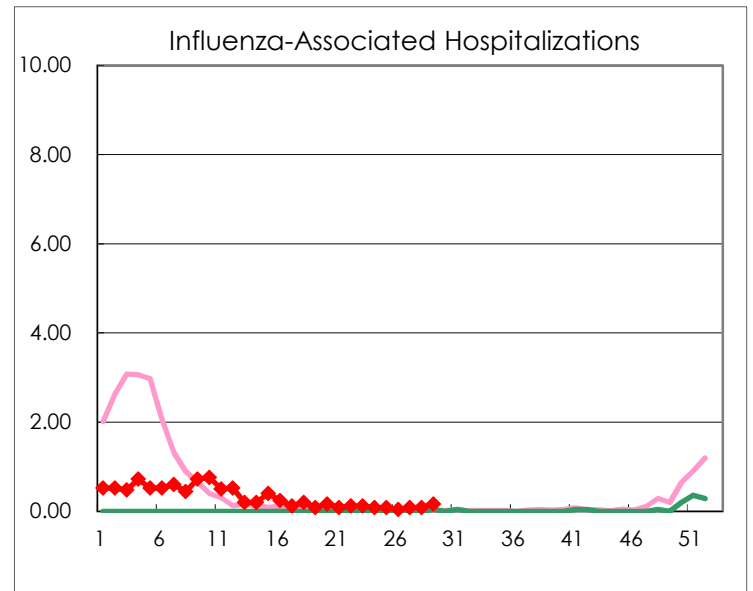
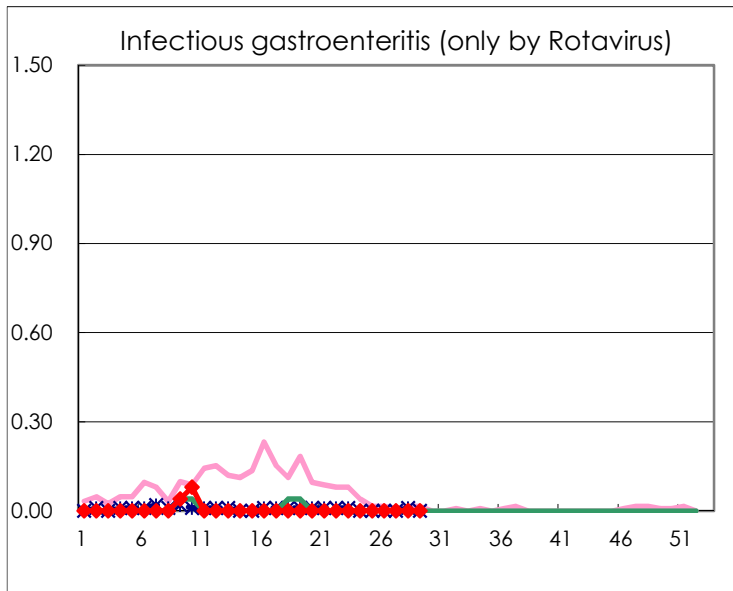
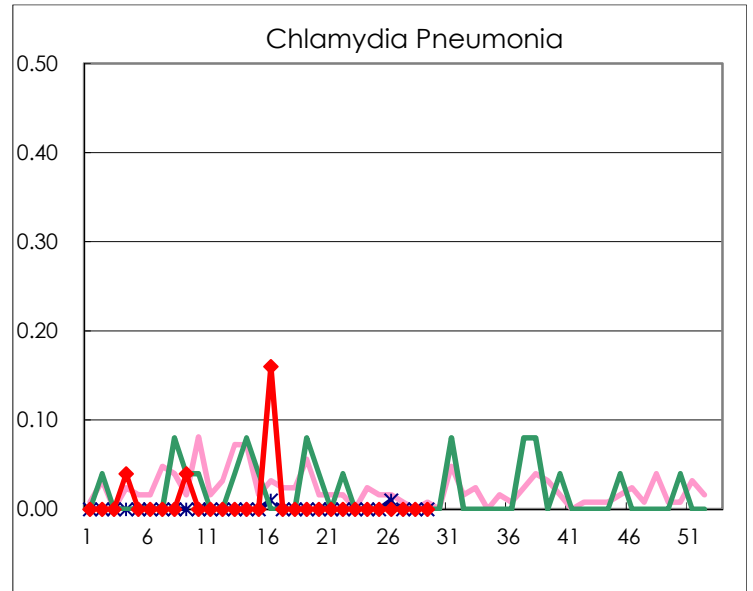
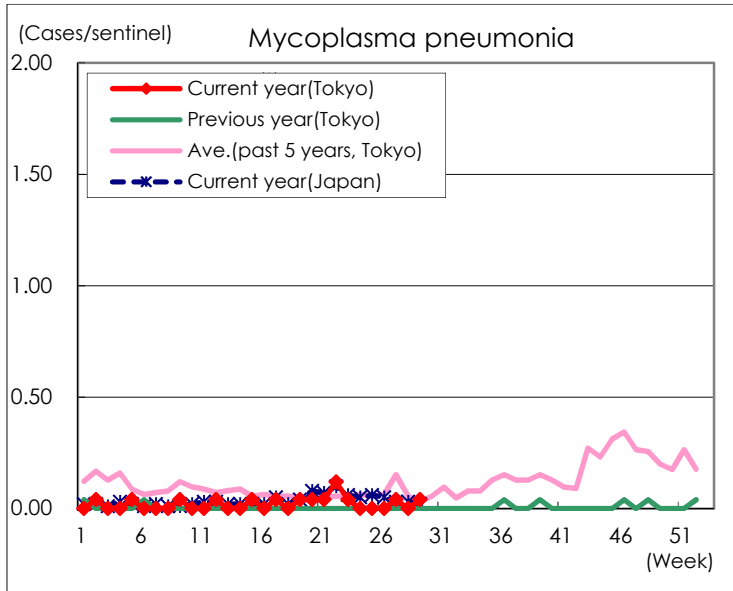
( Blank means 0. )

# Disease Trend Graph (weekly reported cases per sentinel in comparison)









Number of sentinel facilities for weekly reporting		
Types of sentinels	Number of sentinels	Sentinels having reported
Pediatric	264	262
Influenza	419	417
Ophthalmic	39	39
Specially-designated	25	25