

---

INFECTIOUS DISEASES WEEKLY REPORT

# TOKYO iDWR

Tokyo Metropolitan Infectious Disease Surveillance Center

## 14 September 2023 / Number 36 ( 9/4 ~ 9/10 )

### Surveillance System in Tokyo, Japan

The infectious diseases which all physicians must report  
All physicians must report to health centers the incidence of the diseases which are shown at page one. Health centers electronically report the individual cases to Tokyo Metropolitan Infectious Disease Surveillance Center.

The infectious diseases required to be reported by the sentinels  
The numbers of patients who visit the sentinel clinics or hospitals during a week are reported to health centers in Tokyo. And they electronically report the numbers to Tokyo Metropolitan Infectious Disease Surveillance Center. We have about 500 sentinel clinics and hospitals in Tokyo.

Tokyo Metropolitan Institute of Public Health

TEL:81-3-3363-3213 FAX:81-3-5332-7365

e-mail:tmiph@section.metro.tokyo.jp

URL:idsc.tmiph.metro.tokyo.lg.jp/

---

Number of patients with the diseases which all physicians must report

Category	Diseases	Tokyo					Japan	
		33rd	34th	35th	36th	Cum 2023	36th	Cum 2023
I	Ebola hemorrhagic fever							
	Crimean-Congo hemorrhagic fever							
	Smallpox							
	South American hemorrhagic fever							
	Plague							
	Marburg disease							
	Lassa fever							
II	Acute poliomyelitis							
	Tuberculosis	39	45	40	34	1,362	231	9,641
	Diphtheria							
	Severe Acute Respiratory Syndrome(SARS)							
	Middle East Respiratory Syndrome (MERS)							
	Avian influenza H5N1							
	Avian influenza H7N9							
III	Cholera				1	2	1	2
	Shigellosis			1		6		27
	Enterohemorrhagic Escherichia coli infection	21	19	17	14	291	127	2,475
	Typhoid fever					4	1	28
	Paratyphoid fever					1		6
IV	Hepatitis E	1	1	2	2	127	6	394
	West Nile fever							
	Hepatitis A					6	1	35
	Echinococcosis							10
	Mpox			1		142	1	189
	Yellow fever							
	Psittacosis							7
	Omsk hemorrhagic fever							
	Relapsing fever							17
	Kyasanur forest disease							
	Q fever							
	Rabies							
	Coccidioidomycosis							1
	Zika virus infection							
	Severe Fever with Thrombocytopenia Syndrome						2	111
	Hemorrhagic fever with renal syndrome							
	Western equine encephalitis							
	Tick-borne encephalitis							
	Anthrax							
	Chikungunya fever							2
	Scrub typhus(Tsutsugamushi disease)					5	1	114
	Dengue fever	1	2	5		28	3	88
	Eastern equine encephalitis							
	Avian influenza (excluding H5N1 and H7N9)							
	Nipah virus infection							
	Japanese spotted fever					1	11	291
	Japanese encephalitis							
	Hantavirus pulmonary syndrome							
	Herpes B virus infection							
	Glanders							
	Brucellosis							1
	Venezuelan equine encephalitis							
	Hendra virus infection							
	Epidemic typhus							
Botulism								
Malaria					4	1	16	
Tularemia								
Lyme disease					1	1	22	
Lyssavirus infection(excluding rabies)								
Rift valley fever								
Melioidosis								
Legionellosis	2	4	6	3	110	41	1,476	
Leptospirosis			1		2	8	23	
Rocky mountain spotted fever								

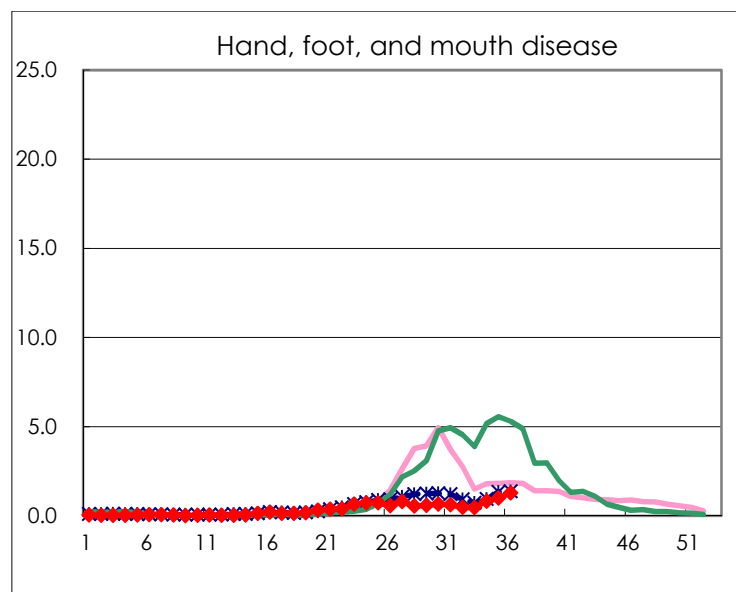
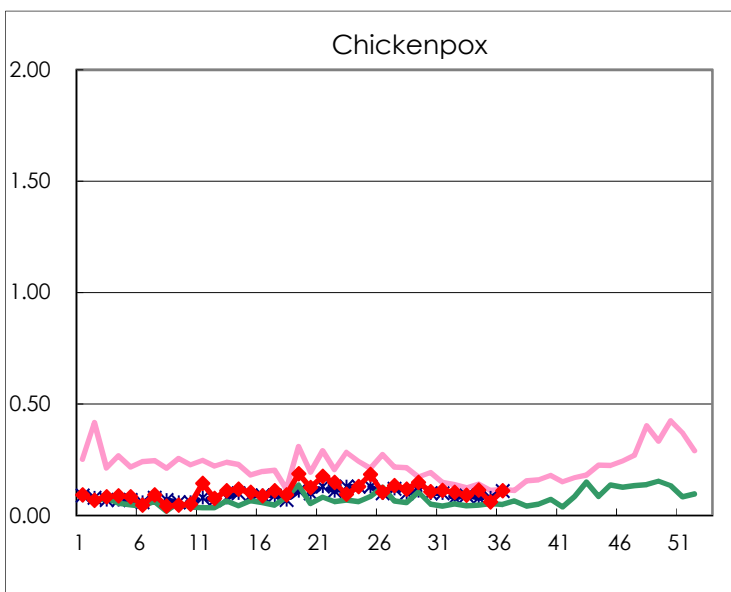
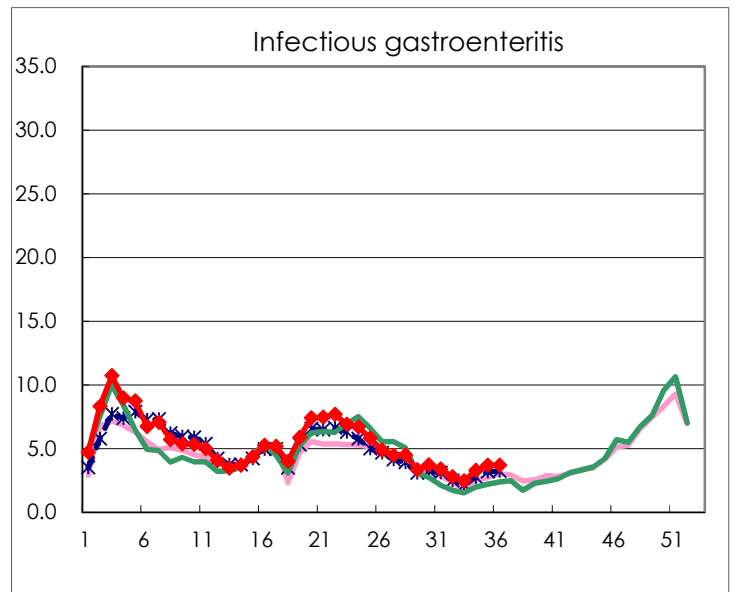
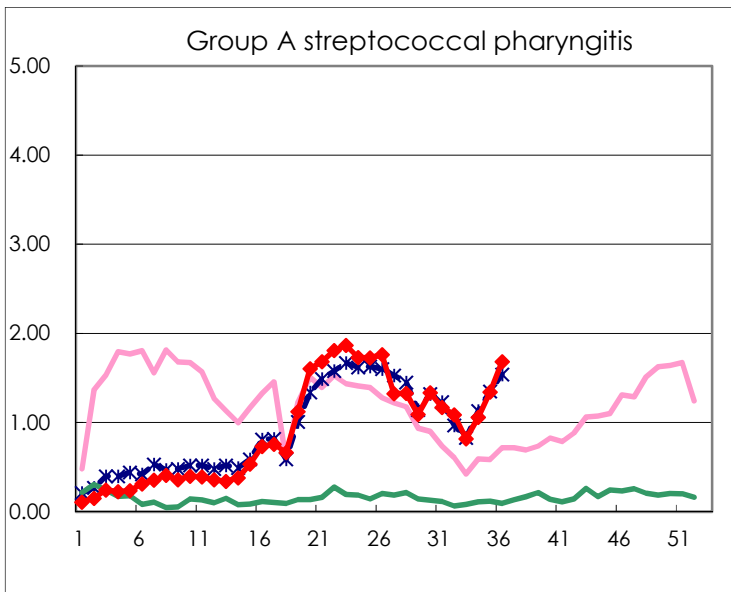
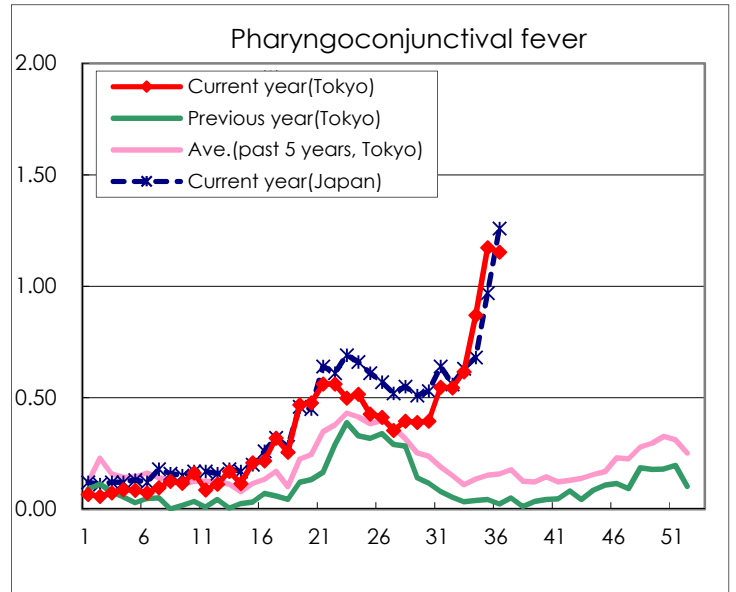
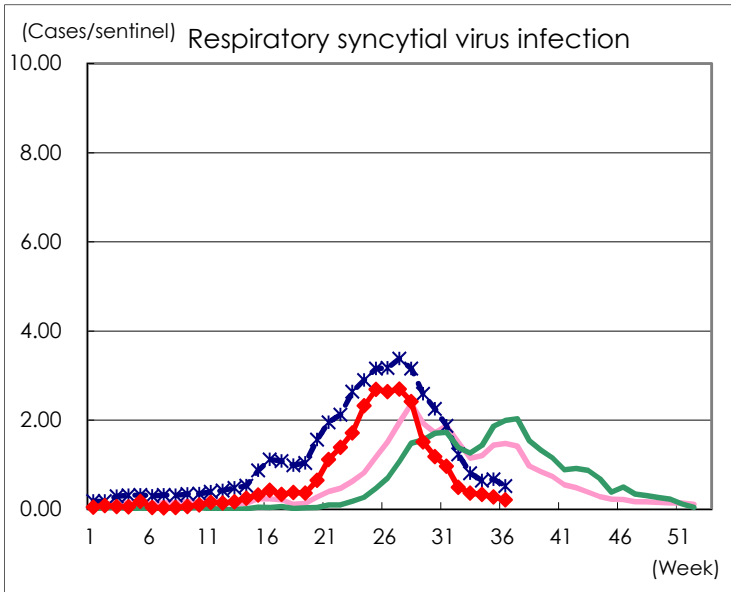
Category	Diseases	Tokyo					Japan	
		33rd	34th	35th	36th	Cum 2023	36th	Cum 2023
V	Amebiasis	1	5	1		66	5	351
	Viral hepatitis(excluding hepatitis A and E)	1	1			37	1	176
	CRE infection	6	4	2	3	141	34	1,311
	Acute Flaccid Paralysis (excluding Acute poliomyelitis)					5	2	43
	Acute encephalitis(excluding JE and WNE)	1	1		3	25	9	377
	Cryptosporidiosis					1		7
	Creutzfeldt-Jakob disease	3		1		15	3	107
	Severe invasive streptococcal infections(TSLS)	2		1	2	81	17	578
	Acquired immunodeficiency syndrome (AIDS)	4	5	5	2	214	9	655
	Giardiasis		1			9		32
	Invasive <i>Haemophilus influenzae</i> disease	2	2	1	1	33	7	388
	Invasive meningococcal disease					1		11
	Invasive pneumococcal disease	3	7	5	2	136	21	1,232
	Varicella (limited to hospitalized case)	1	1			47	4	258
	Congenital rubella syndrome							
	Syphilis	74	79	75	59	2,586	184	10,396
	Disseminated cryptococcosis			1		13	3	119
	Tetanus	1				4	1	73
	Vancomycin-resistant <i>S. aureus</i> infection							
	Vancomycin-resistant <i>Enterococcus</i> infection			1		7	1	83
	Pertussis	1	5	1	1	90	10	645
Rubella					4		10	
Measles			1		7		26	
MDRA infection					1		11	

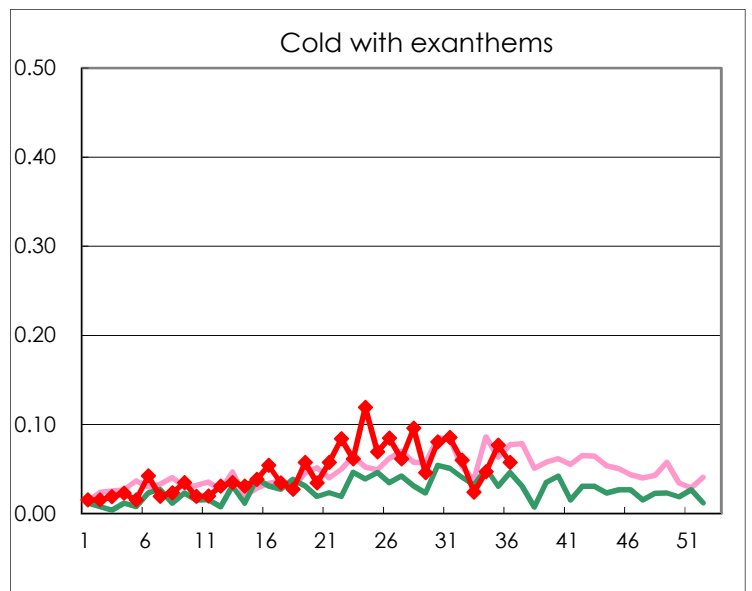
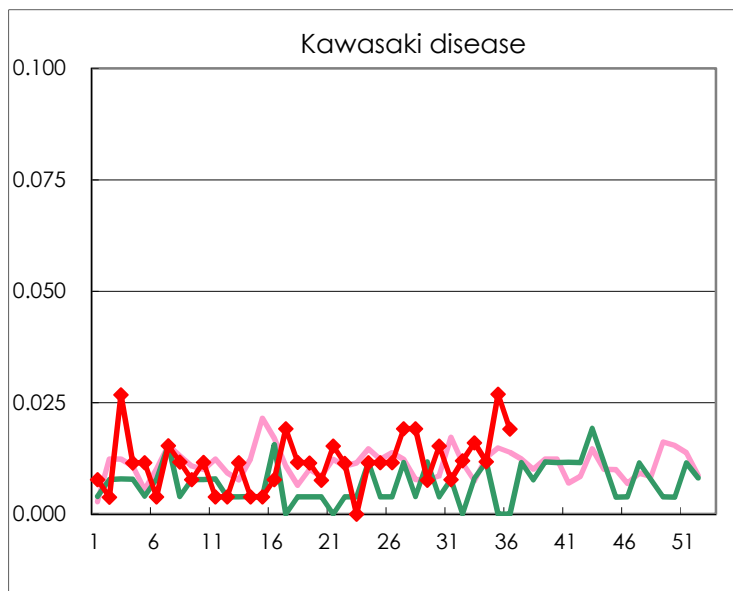
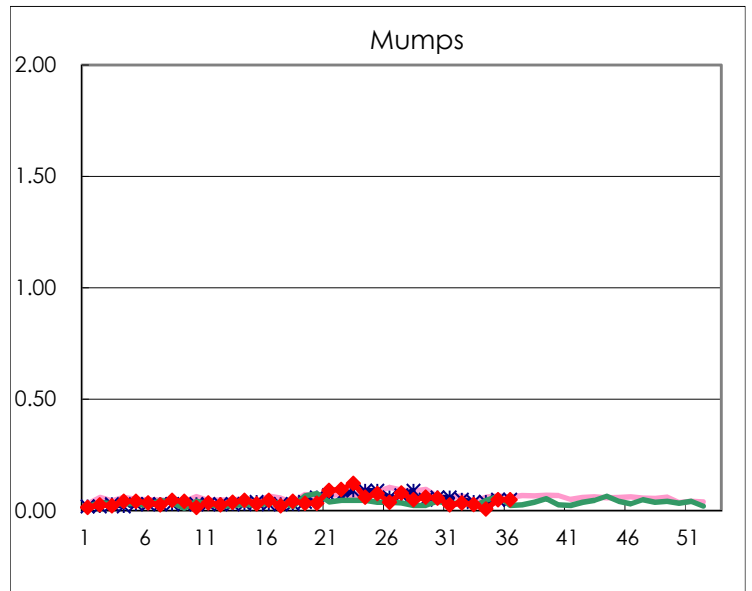
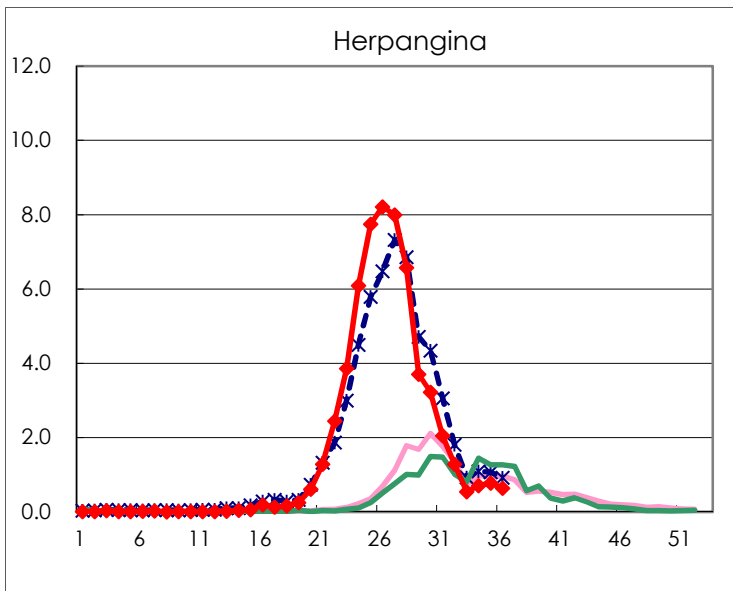
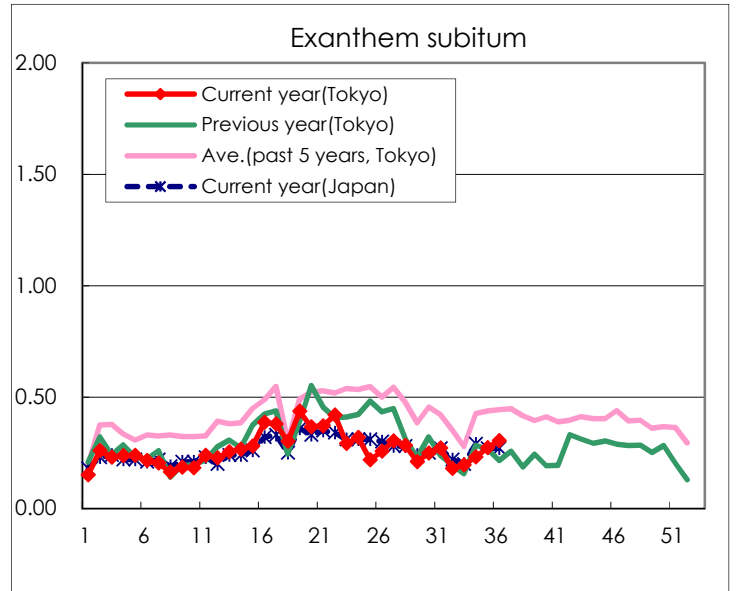
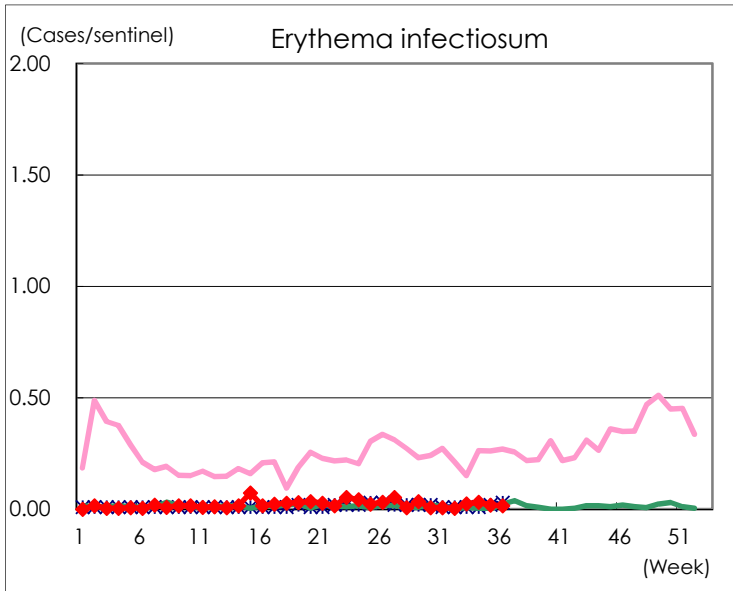
Number of patients with the diseases to be reported  
by the designated clinics and hospitals

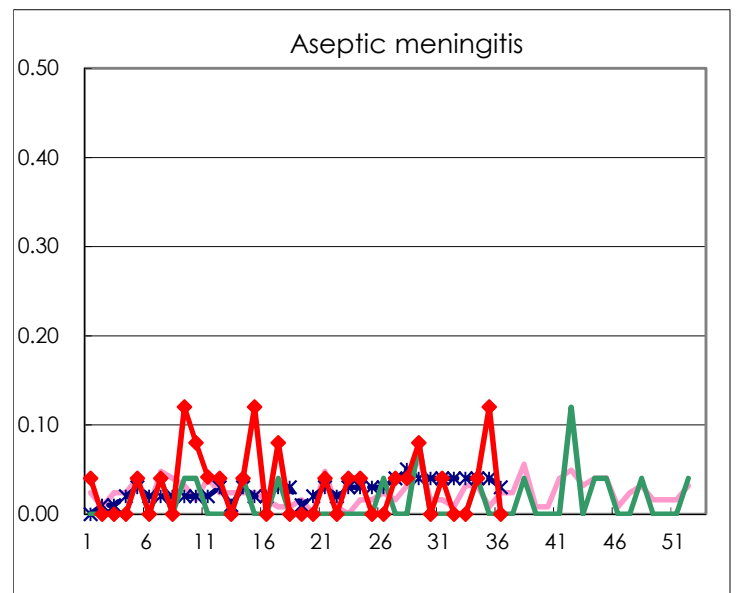
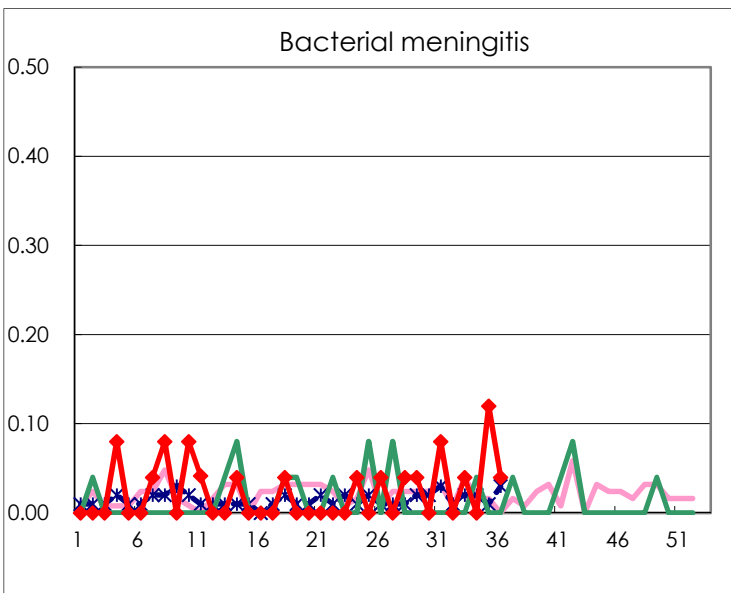
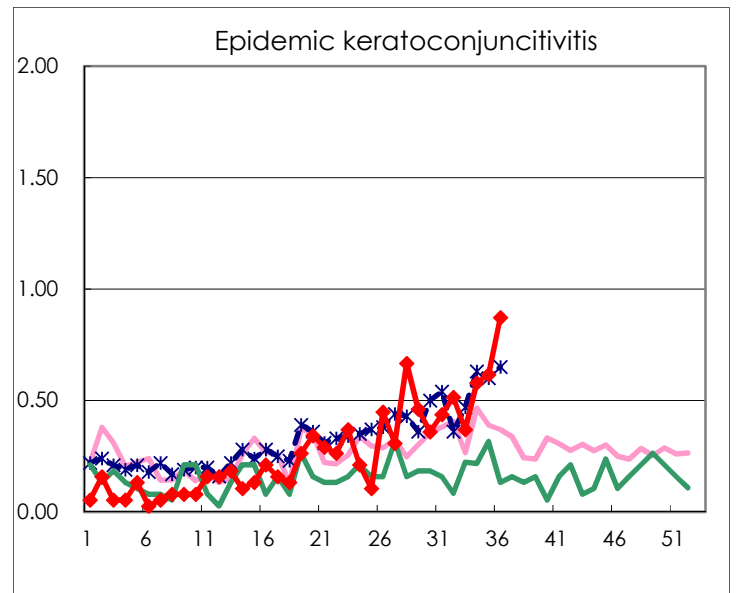
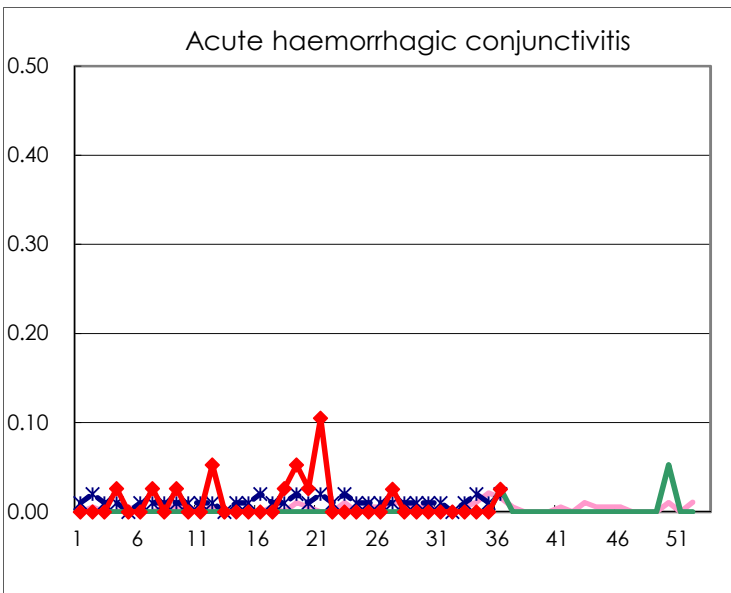
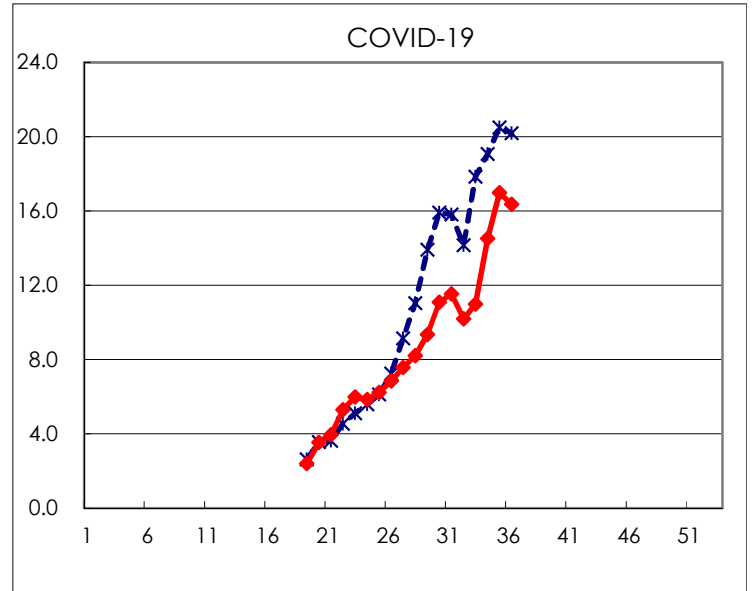
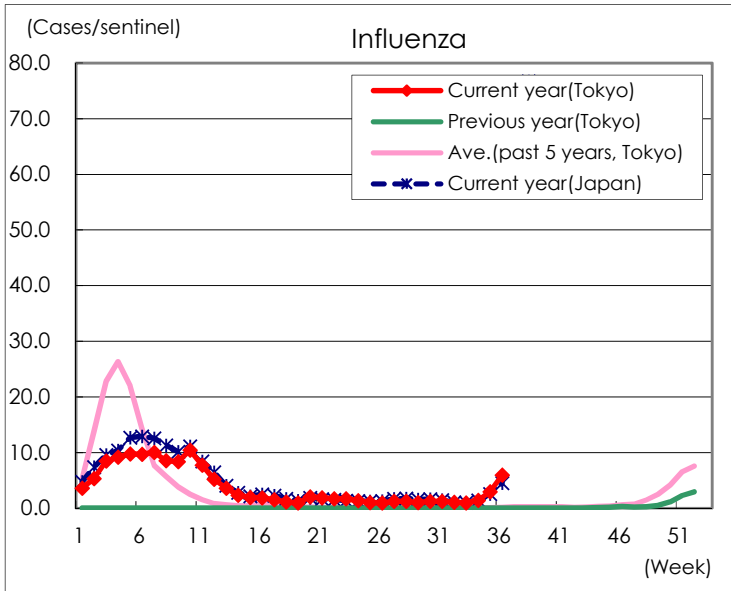
Diseases	Tokyo				
	33rd	34th	35th	36th	/sentinel
Respiratory syncytial virus infection	90	85	72	55	0.21
Pharyngoconjunctival fever	154	222	305	302	1.15
Group A streptococcal pharyngitis	205	270	349	441	1.68
Infectious gastroenteritis	614	834	955	964	3.68
Chickenpox	23	29	16	29	0.11
Hand, foot, and mouth disease	113	206	259	338	1.29
Erythema infectiosum	6	8	5	4	0.02
Exanthem subitum	49	59	71	80	0.31
Herpangina	136	181	202	166	0.63
Mumps	7	2	13	13	0.05
Kawasaki disease	4	3	7	5	0.02
Cold with exanthems	6	12	20	15	0.06
Influenza	375	576	1,226	2,481	5.95
COVID-19	4,403	5,956	7,046	6,824	16.36
Acute hemorrhagic conjunctivitis				1	0.03
Epidemic keratoconjunctivitis	14	22	24	34	0.87
Bacterial meningitis	1		3	1	0.04
Aseptic meningitis		1	3		
Mycoplasma pneumonia	2	1	1		
Chlamydial pneumonia (excluding psittacosis)					
Infectious gastroenteritis (only by Rotavirus)				1	0.04
Influenza-Associated Hospitalizations	3	12	16	10	0.40

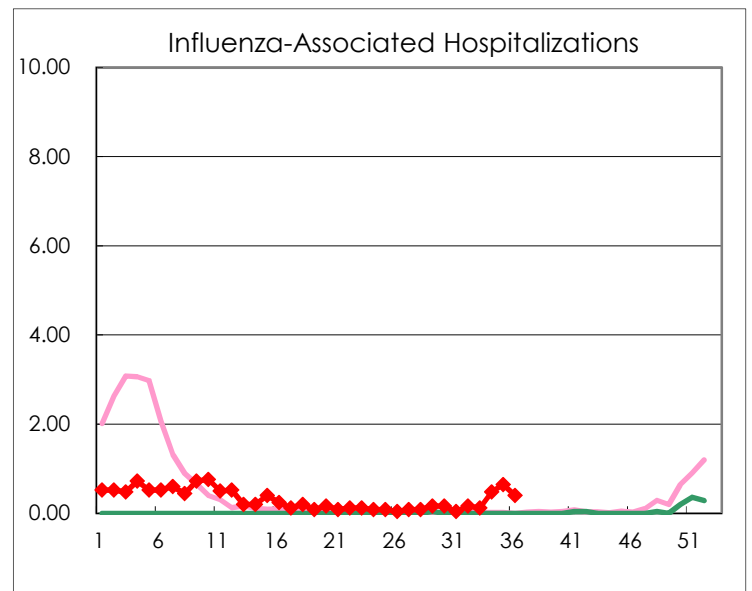
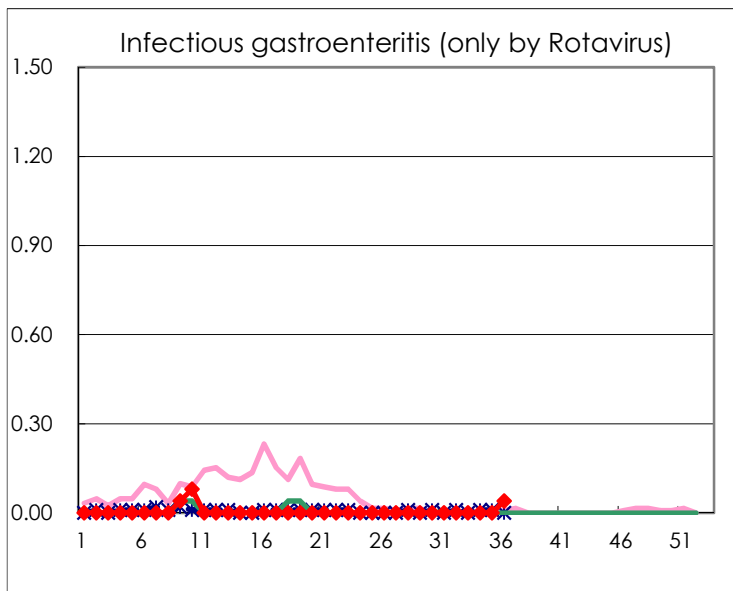
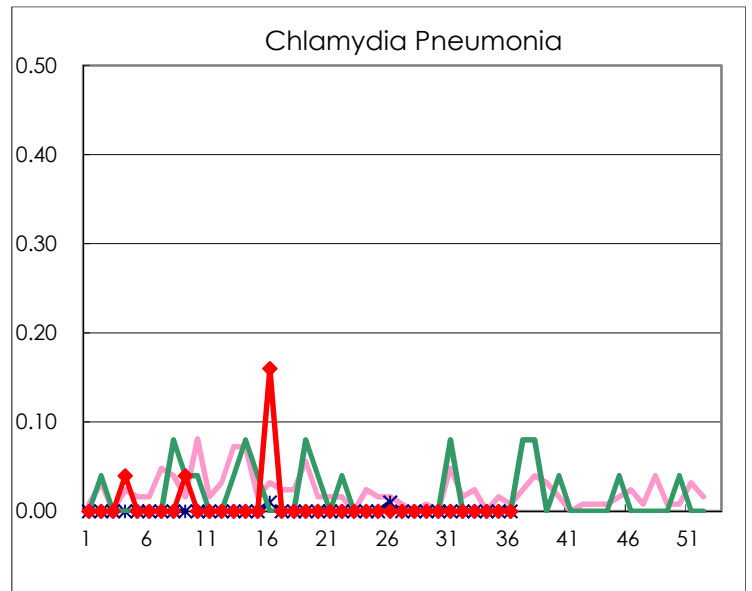
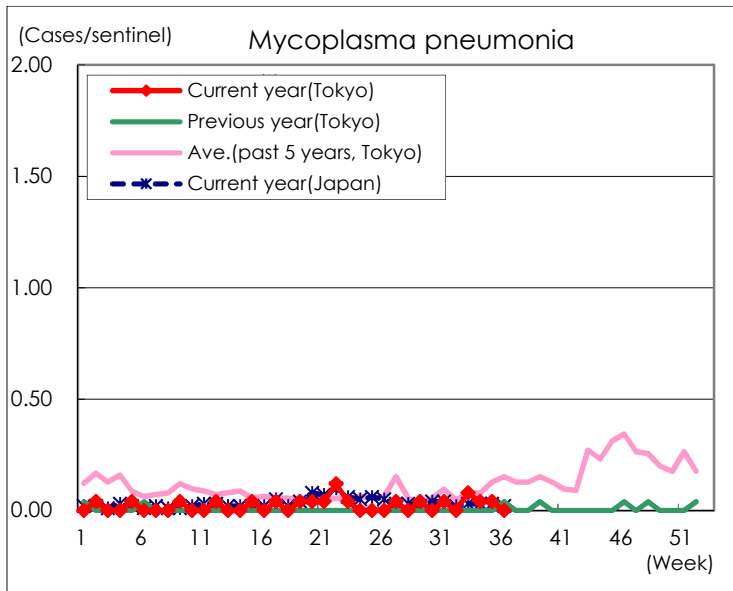
( Blank means 0. )

# Disease Trend Graph (weekly reported cases per sentinel in comparison)









Number of sentinel facilities for weekly reporting		
Types of sentinels	Number of sentinels	Sentinels having reported
Pediatric	264	262
Influenza COVID-19	419	417
Ophthalmic	39	39
Specially-designated	25	25