
INFECTIOUS DISEASES WEEKLY REPORT

TOKYO IDWR

Tokyo Metropolitan Infectious Disease Surveillance Center

21 September 2023 / Number 37 (9/11 ~ 9/17)

Surveillance System in Tokyo, Japan

The infectious diseases which all physicians must report
All physicians must report to health centers the incidence of the diseases which are shown at page one. Health centers electronically report the individual cases to Tokyo Metropolitan Infectious Disease Surveillance Center.

The infectious diseases required to be reported by the sentinels
The numbers of patients who visit the sentinel clinics or hospitals during a week are reported to health centers in Tokyo. And they electronically report the numbers to Tokyo Metropolitan Infectious Disease Surveillance Center. We have about 500 sentinel clinics and hospitals in Tokyo.

Tokyo Metropolitan Institute of Public Health

TEL:81-3-3363-3213 FAX:81-3-5332-7365

e-mail:tmiph@section.metro.tokyo.jp

URL:idsc.tmiph.metro.tokyo.lg.jp/

Number of patients with the diseases which all physicians must report

Category	Diseases	Tokyo					Japan	
		34th	35th	36th	37th	Cum 2023	37th	Cum 2023
I	Ebola hemorrhagic fever							
	Crimean-Congo hemorrhagic fever							
	Smallpox							
	South American hemorrhagic fever							
	Plague							
	Marburg disease							
	Lassa fever							
II	Acute poliomyelitis							
	Tuberculosis	47	42	34	42	1,408	239	9,937
	Diphtheria							
	Severe Acute Respiratory Syndrome(SARS)							
	Middle East Respiratory Syndrome (MERS)							
	Avian influenza H5N1							
	Avian influenza H7N9							
III	Cholera			1		2		2
	Shigellosis		1			6		27
	Enterohemorrhagic Escherichia coli infection	19	17	14	14	305	120	2,652
	Typhoid fever				1	5	1	29
	Paratyphoid fever				1	2	1	7
IV	Hepatitis E	1	2	2	3	130	4	400
	West Nile fever							
	Hepatitis A					6	1	36
	Echinococcosis							10
	Mpox		1		4	146	6	195
	Yellow fever							
	Psittacosis							7
	Omsk hemorrhagic fever							
	Relapsing fever						1	18
	Kyasanur forest disease							
	Q fever							
	Rabies							
	Coccidioidomycosis							1
	Zika virus infection							
	Severe Fever with Thrombocytopenia Syndrome						1	112
	Hemorrhagic fever with renal syndrome							
	Western equine encephalitis							
	Tick-borne encephalitis							
	Anthrax							
	Chikungunya fever							2
	Scrub typhus(Tsutsugamushi disease)					5		114
	Dengue fever	2	5	1		29	7	96
	Eastern equine encephalitis							
	Avian influenza (excluding H5N1 and H7N9)							
	Nipah virus infection							
	Japanese spotted fever					1	13	305
	Japanese encephalitis							
	Hantavirus pulmonary syndrome							
	Herpes B virus infection							
	Glanders							
	Brucellosis							1
	Venezuelan equine encephalitis							
	Hendra virus infection							
	Epidemic typhus							
Botulism								
Malaria				2	6	3	19	
Tularemia								
Lyme disease					1		22	
Lyssavirus infection(excluding rabies)								
Rift valley fever								
Melioidosis								
Legionellosis	4	6	3	4	114	58	1,538	
Leptospirosis		1			2		23	
Rocky mountain spotted fever								

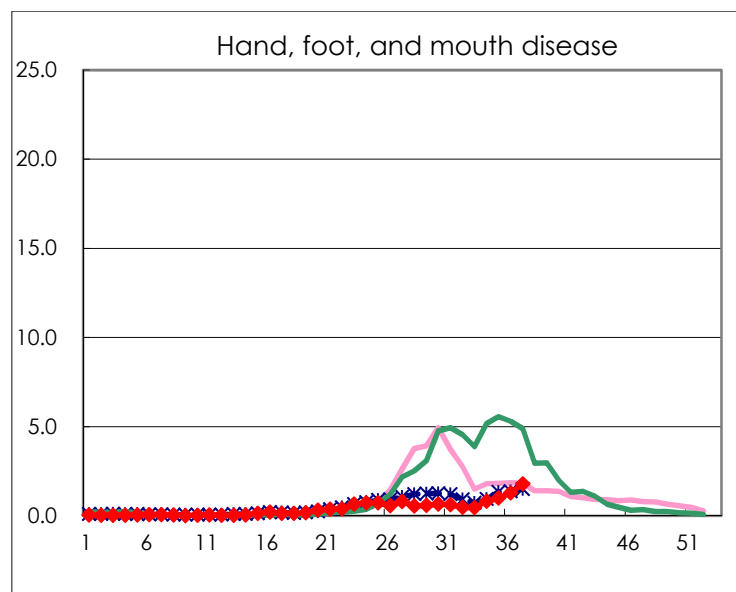
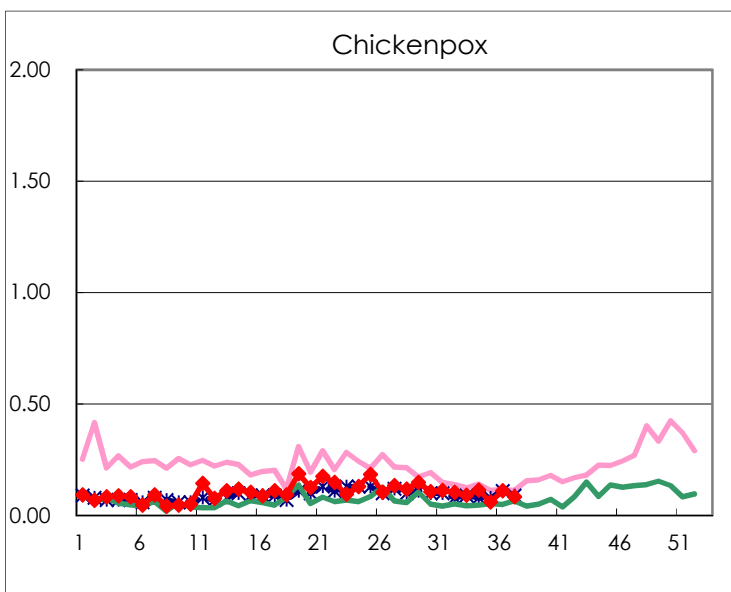
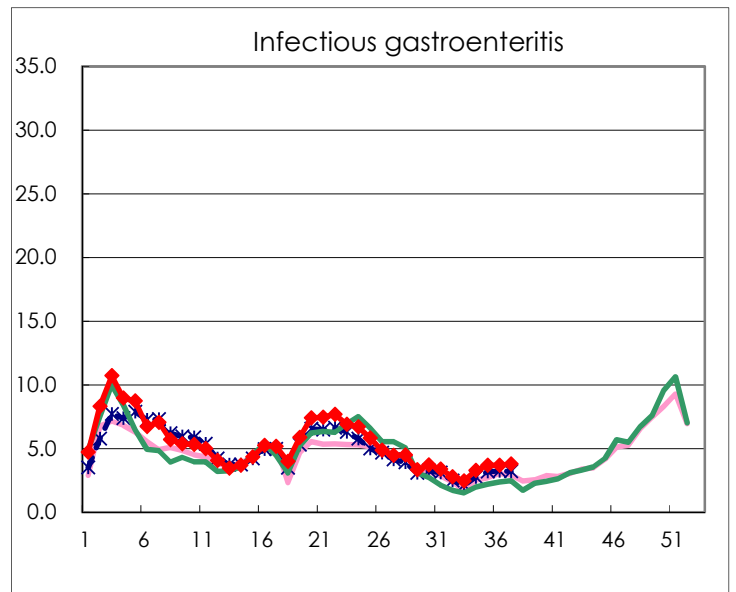
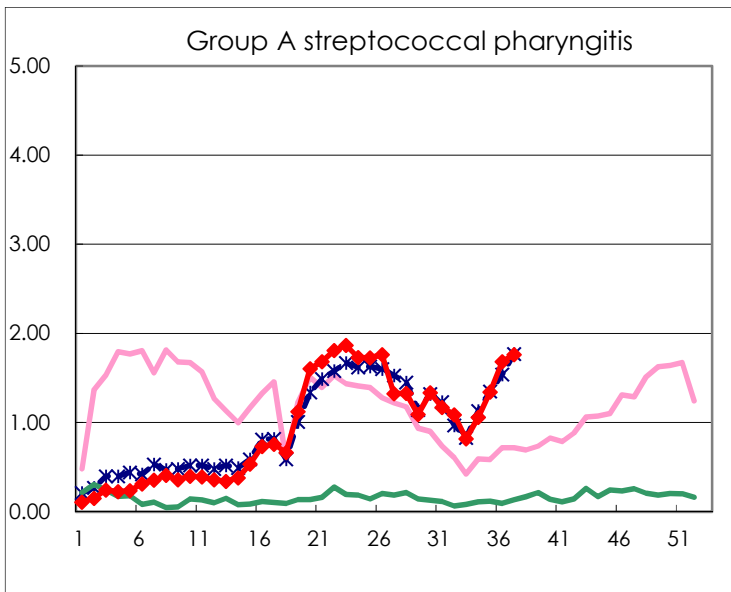
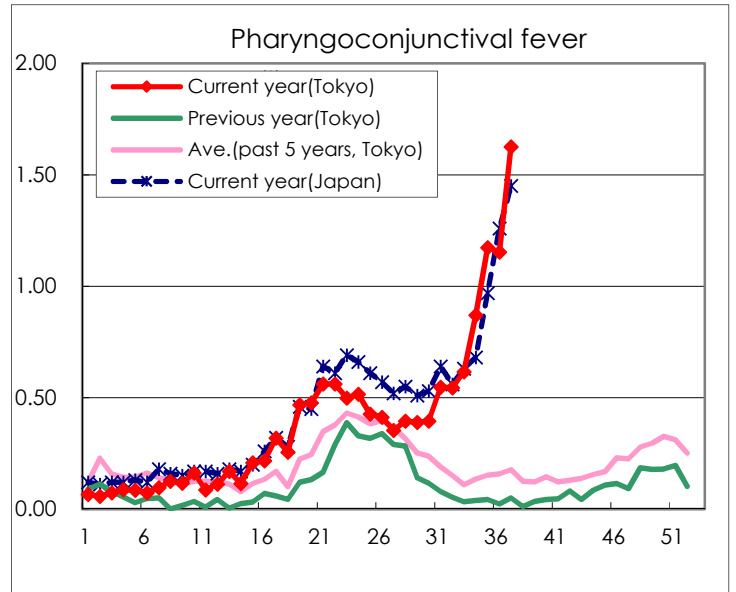
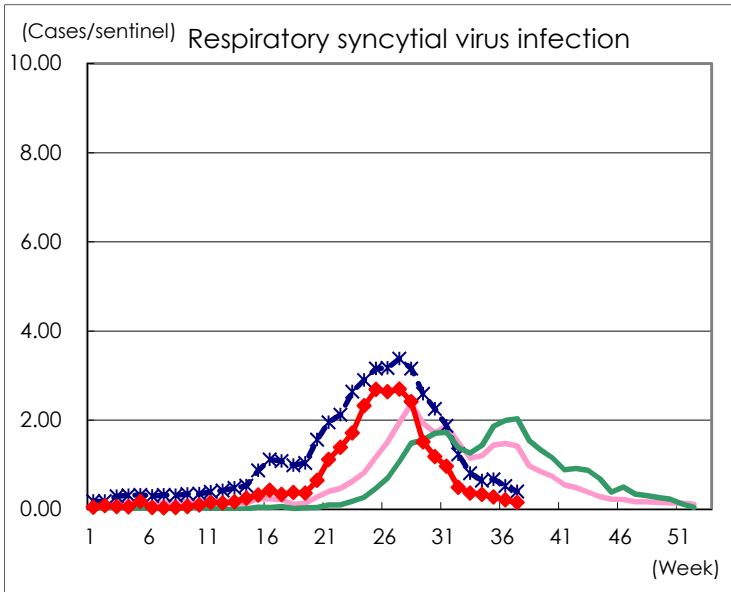
Category	Diseases	Tokyo					Japan	
		34th	35th	36th	37th	Cum 2023	37th	Cum 2023
V	Amebiasis	5	1			66	4	360
	Viral hepatitis(excluding hepatitis A and E)	1				37	1	179
	CRE infection	4	2	3	4	145	42	1,367
	Acute Flaccid Paralysis (excluding Acute poliomyelitis)					5	1	44
	Acute encephalitis(excluding JE and WNE)	1		3		25	4	386
	Cryptosporidiosis					1	1	8
	Creutzfeldt-Jakob disease		1		1	16	4	113
	Severe invasive streptococcal infections(TSLS)		1	3	1	83	11	591
	Acquired immunodeficiency syndrome (AIDS)	5	5	2	3	217	6	668
	Giardiasis	1				9		32
	Invasive <i>Haemophilus influenzae</i> disease	2	1	1	1	34	9	397
	Invasive meningococcal disease					1		11
	Invasive pneumococcal disease	7	5	2	5	141	20	1,259
	Varicella (limited to hospitalized case)	1			1	48	4	264
	Congenital rubella syndrome							
	Syphilis	79	75	60	68	2,655	171	10,657
	Disseminated cryptococcosis		1			13	1	121
	Tetanus					4	1	75
	Vancomycin-resistant <i>S. aureus</i> infection							
	Vancomycin-resistant <i>Enterococcus</i> infection		1			7		87
	Pertussis	5	1	1		90	18	664
Rubella					4		10	
Measles		1			7		25	
MDRA infection					1		11	

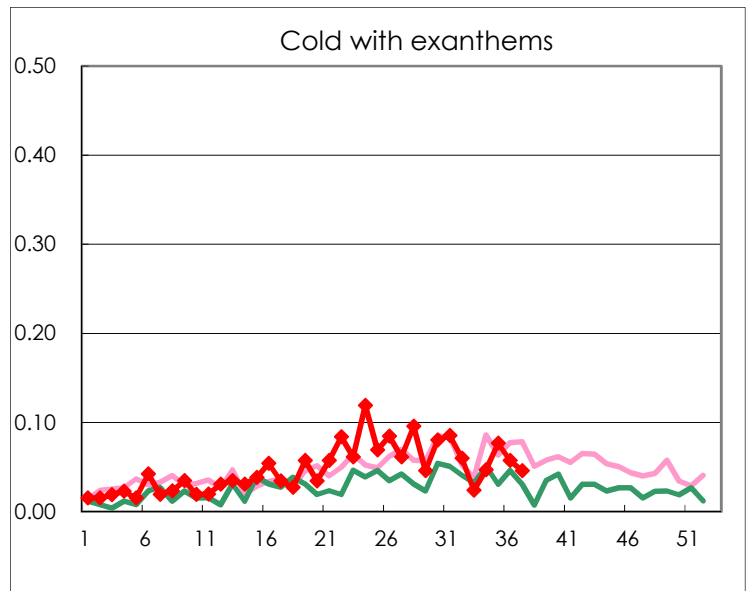
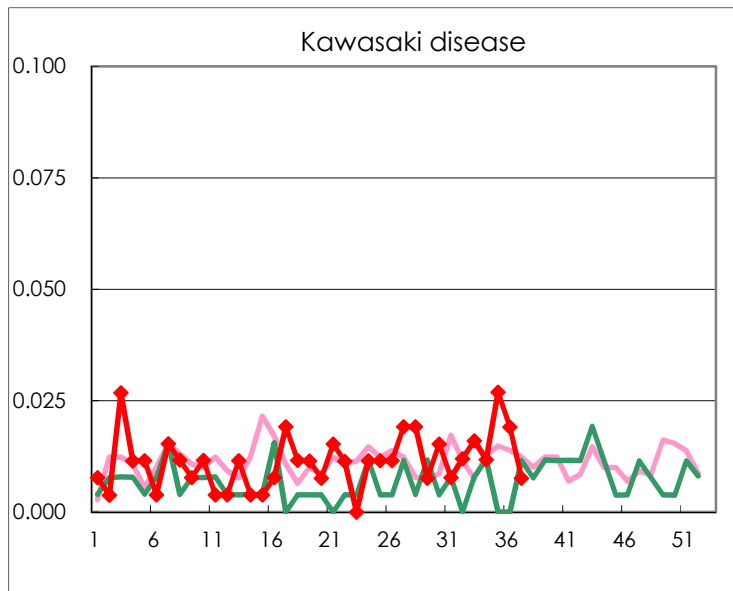
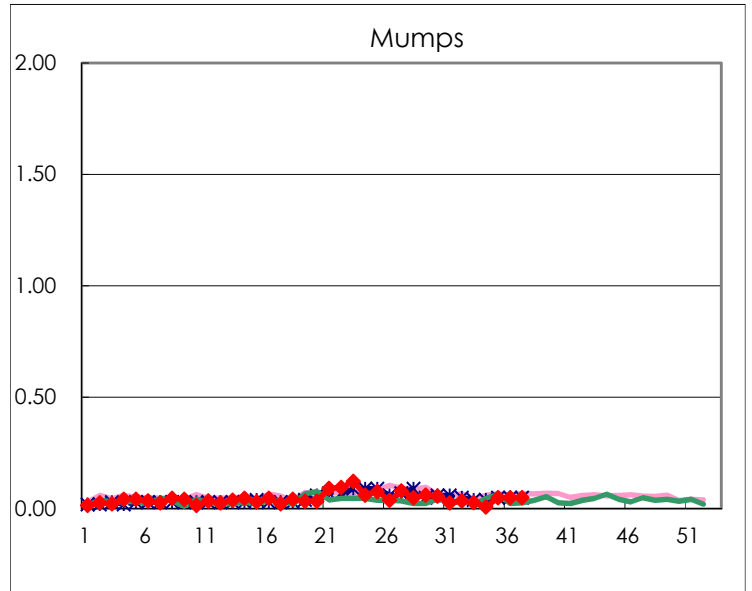
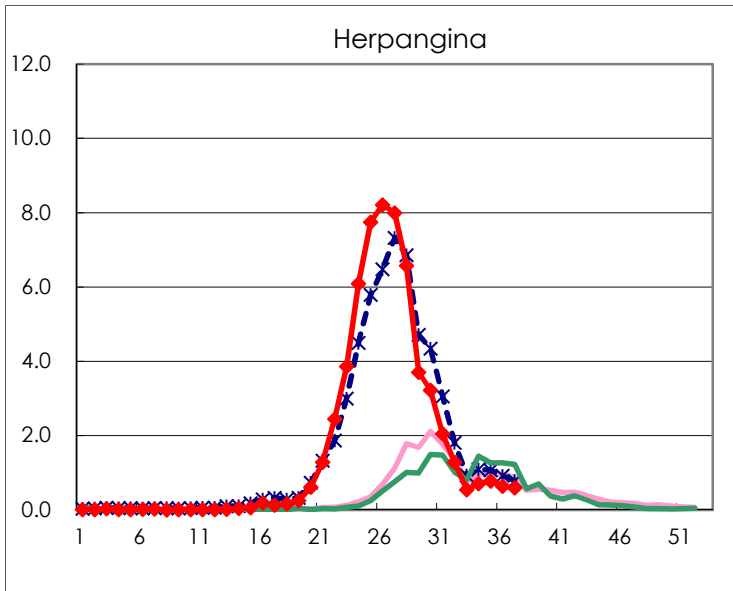
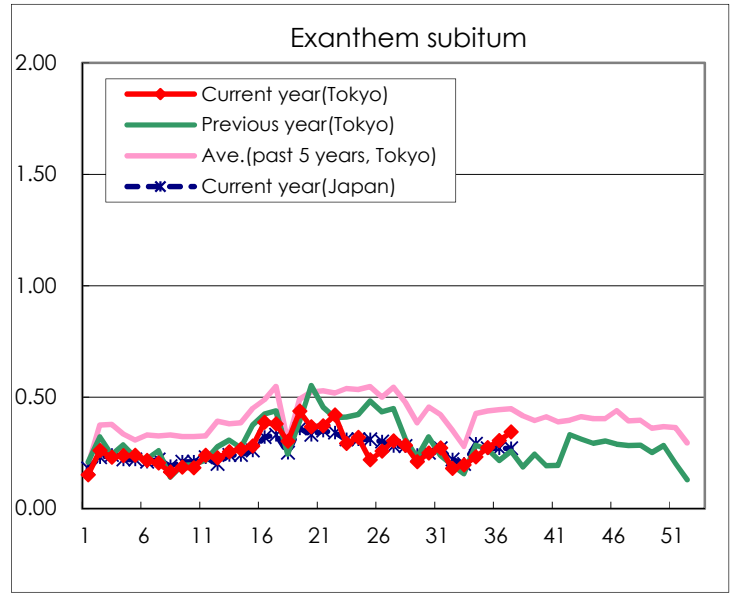
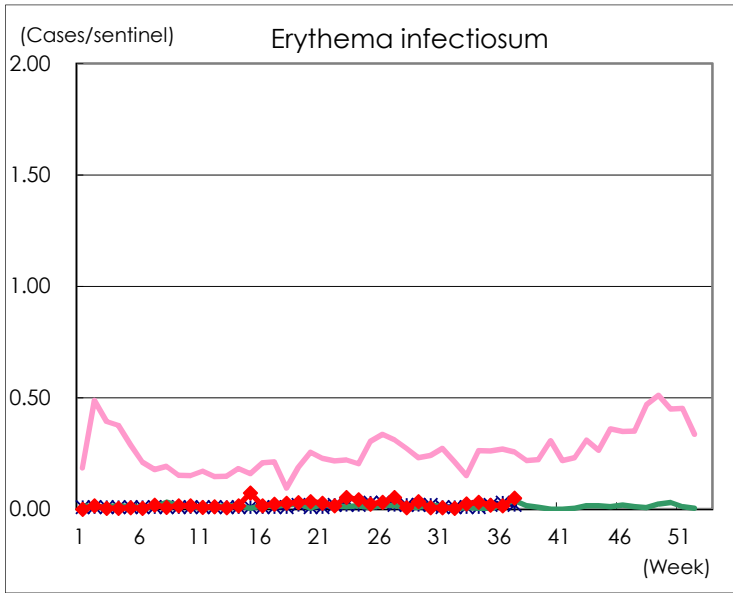
Number of patients with the diseases to be reported
by the designated clinics and hospitals

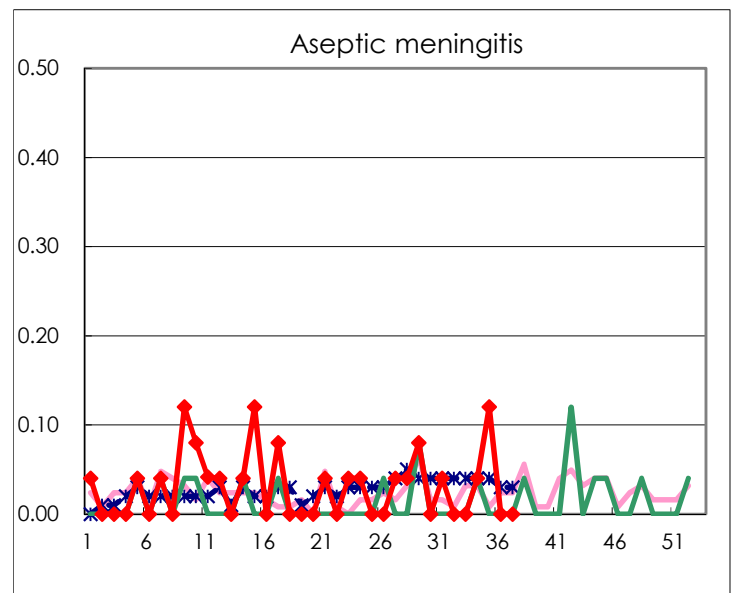
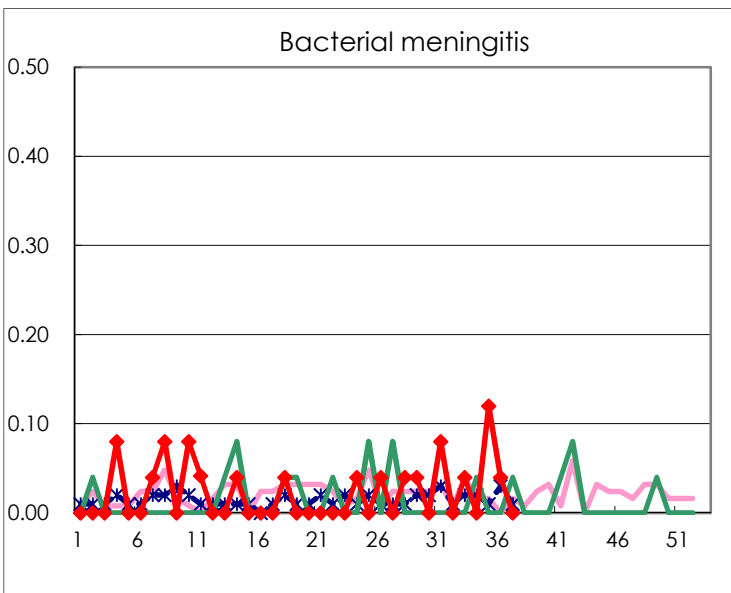
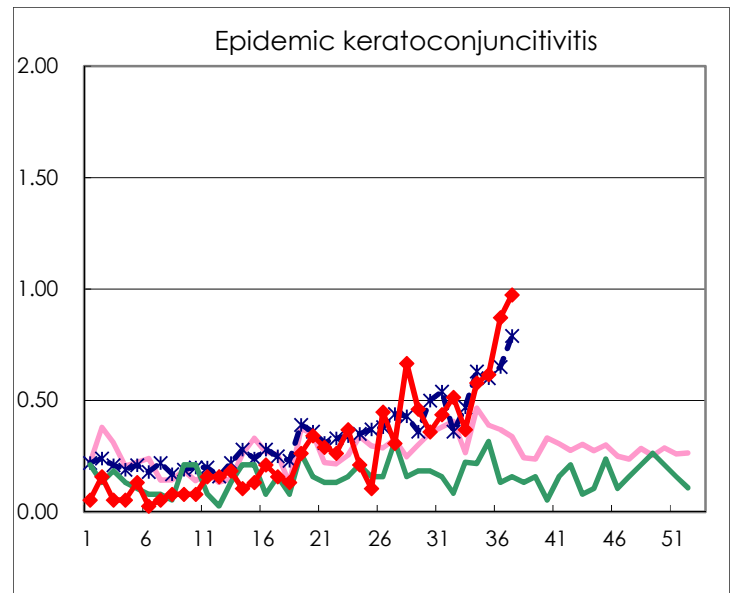
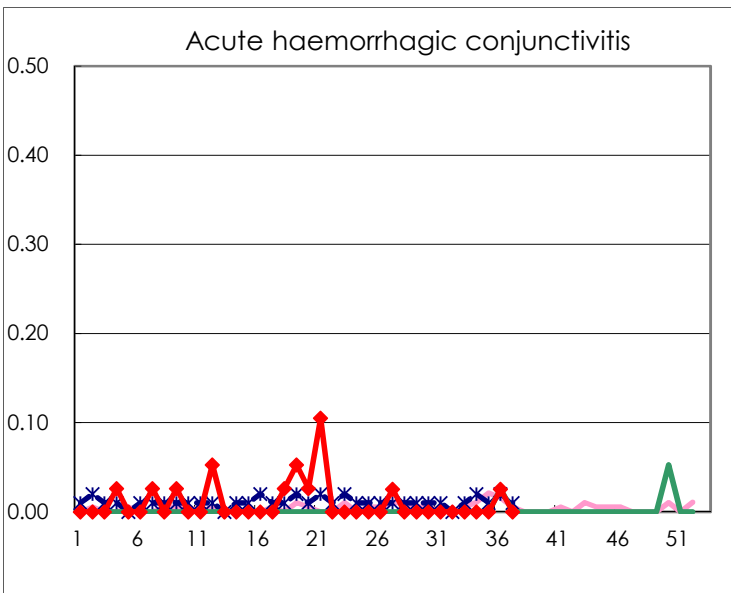
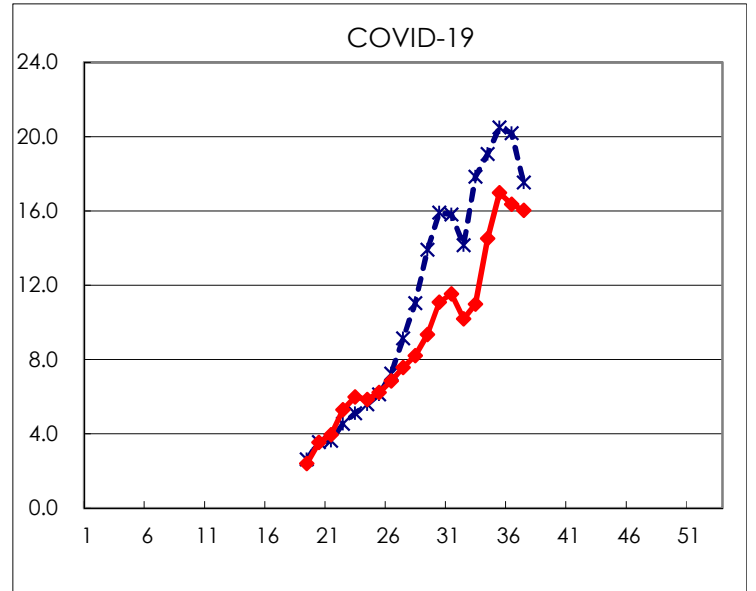
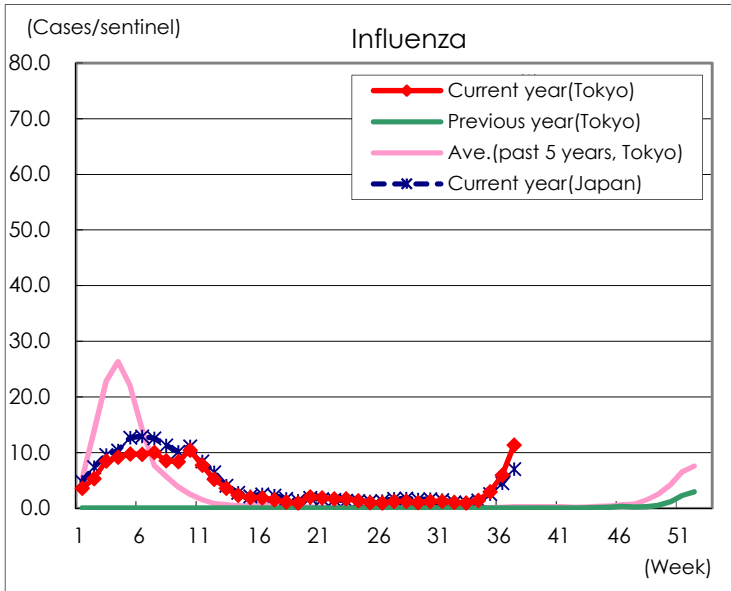
Diseases	Tokyo				
	34th	35th	36th	37th	/sentinel
Respiratory syncytial virus infection	85	72	55	41	0.16
Pharyngoconjunctival fever	222	305	302	426	1.63
Group A streptococcal pharyngitis	270	349	441	462	1.76
Infectious gastroenteritis	834	955	964	990	3.78
Chickenpox	29	16	29	22	0.08
Hand, foot, and mouth disease	206	259	338	469	1.79
Erythema infectiosum	8	5	4	13	0.05
Exanthem subitum	59	71	80	90	0.34
Herpangina	181	202	166	156	0.60
Mumps	2	13	13	13	0.05
Kawasaki disease	3	7	5	2	0.01
Cold with exanthems	12	20	15	12	0.05
Influenza	576	1,226	2,481	4,742	11.37
COVID-19	5,956	7,046	6,824	6,688	16.04
Acute hemorrhagic conjunctivitis			1		
Epidemic keratoconjunctivitis	22	24	34	38	0.97
Bacterial meningitis		3	1		
Aseptic meningitis	1	3			
Mycoplasma pneumonia	1	1		1	0.04
Chlamydial pneumonia (excluding psittacosis)					
Infectious gastroenteritis (only by Rotavirus)			1		
Influenza-Associated Hospitalizations	12	16	10	12	0.48

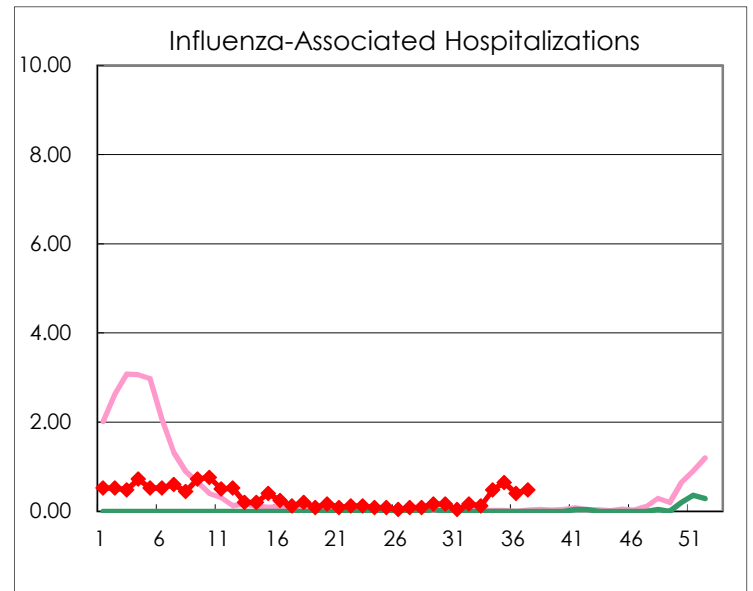
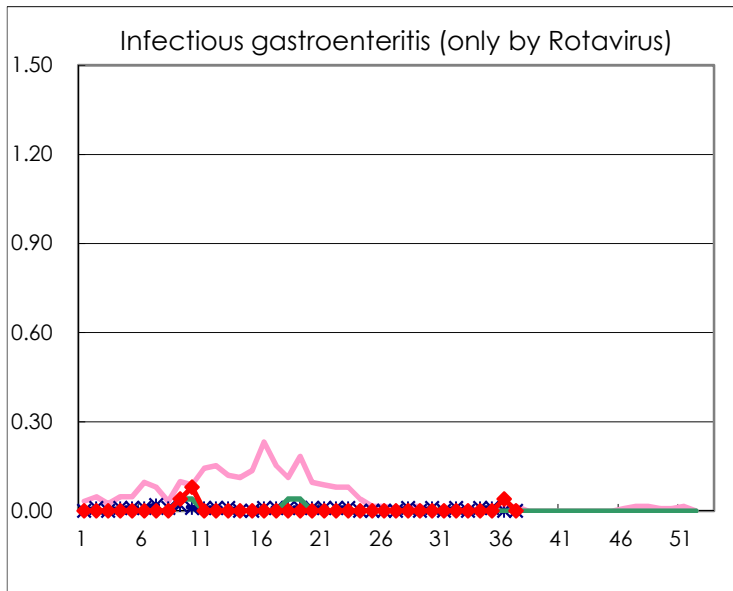
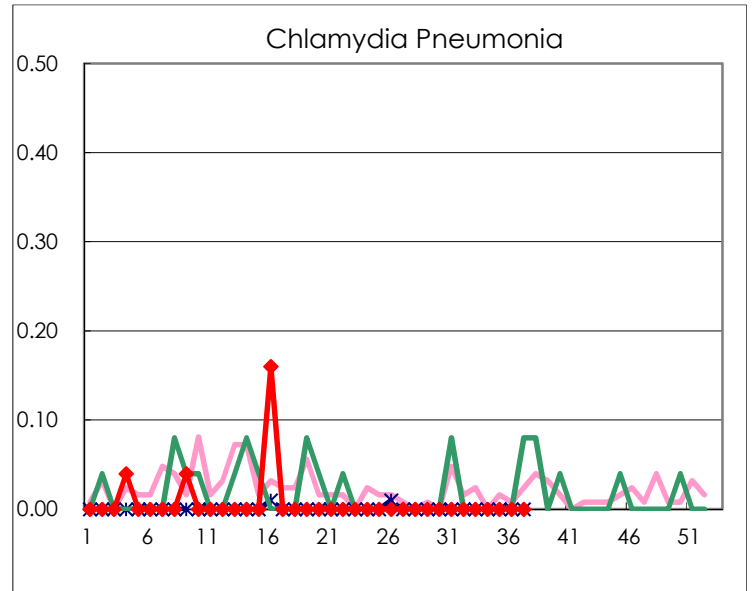
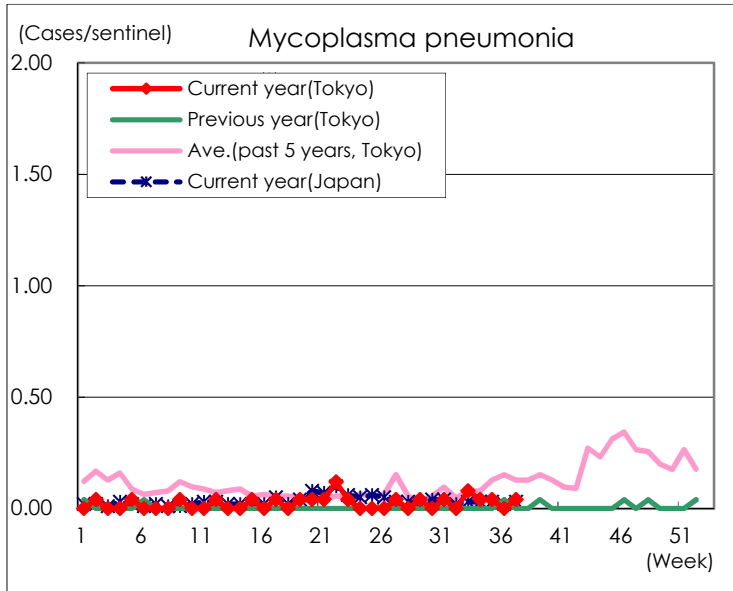
(Blank means 0.)

Disease Trend Graph (weekly reported cases per sentinel in comparison)









Number of sentinel facilities for weekly reporting		
Types of sentinels	Number of sentinels	Sentinels having reported
Pediatric	264	262
Influenza COVID-19	419	417
Ophthalmic	39	39
Specially-designated	25	25