
INFECTIOUS DISEASES WEEKLY REPORT

TOKYO IDWR

Tokyo Metropolitan Infectious Disease Surveillance Center

28 September 2023 / Number 38

(9/18 ~ 9/24)

Surveillance System in Tokyo, Japan

The infectious diseases which all physicians must report
All physicians must report to health centers the incidence of the diseases which are shown at page one. Health centers electronically report the individual cases to Tokyo Metropolitan Infectious Disease Surveillance Center.

The infectious diseases required to be reported by the sentinels
The numbers of patients who visit the sentinel clinics or hospitals during a week are reported to health centers in Tokyo. And they electronically report the numbers to Tokyo Metropolitan Infectious Disease Surveillance Center. We have about 500 sentinel clinics and hospitals in Tokyo.

Tokyo Metropolitan Institute of Public Health

TEL:81-3-3363-3213 FAX:81-3-5332-7365

e-mail:tmiph@section.metro.tokyo.jp

URL:idsc.tmiph.metro.tokyo.lg.jp/

Number of patients with the diseases which all physicians must report

Category	Diseases	Tokyo					Japan	
		35th	36th	37th	38th	Cum 2023	38th	Cum 2023
I	Ebola hemorrhagic fever							
	Crimean-Congo hemorrhagic fever							
	Smallpox							
	South American hemorrhagic fever							
	Plague							
	Marburg disease							
	Lassa fever							
II	Acute poliomyelitis							
	Tuberculosis	42	34	42	27	1,435	202	10,201
	Diphtheria							
	Severe Acute Respiratory Syndrome(SARS)							
	Middle East Respiratory Syndrome (MERS)							
	Avian influenza H5N1							
	Avian influenza H7N9							
III	Cholera		1			2		2
	Shigellosis	1				6		27
	Enterohemorrhagic Escherichia coli infection	17	15	15	5	312	67	2,731
	Typhoid fever			1		5		30
	Paratyphoid fever			1		2		7
IV	Hepatitis E	2	2	3	1	131	5	409
	West Nile fever							
	Hepatitis A				1	7		37
	Echinococcosis							11
	Mpox	1		4	2	148	2	197
	Yellow fever							
	Psittacosis							7
	Omsk hemorrhagic fever							
	Relapsing fever							18
	Kyasanur forest disease							
	Q fever							
	Rabies							
	Coccidioidomycosis							1
	Zika virus infection							
	Severe Fever with Thrombocytopenia Syndrome						1	113
	Hemorrhagic fever with renal syndrome							
	Western equine encephalitis							
	Tick-borne encephalitis							
	Anthrax							
	Chikungunya fever							2
	Scrub typhus(Tsutsugamushi disease)					5	1	115
	Dengue fever	5	1		3	32	3	100
	Eastern equine encephalitis							
	Avian influenza (excluding H5N1 and H7N9)							
	Nipah virus infection							
	Japanese spotted fever					1	17	324
	Japanese encephalitis						2	2
	Hantavirus pulmonary syndrome							
	Herpes B virus infection							
	Glanders							
	Brucellosis							1
	Venezuelan equine encephalitis							
	Hendra virus infection							
	Epidemic typhus							
Botulism								
Malaria			2		6		19	
Tularemia								
Lyme disease					1		23	
Lyssavirus infection(excluding rabies)								
Rift valley fever								
Melioidosis								
Legionellosis	6	3	5	8	123	56	1,610	
Leptospirosis	1				2	3	26	
Rocky mountain spotted fever								

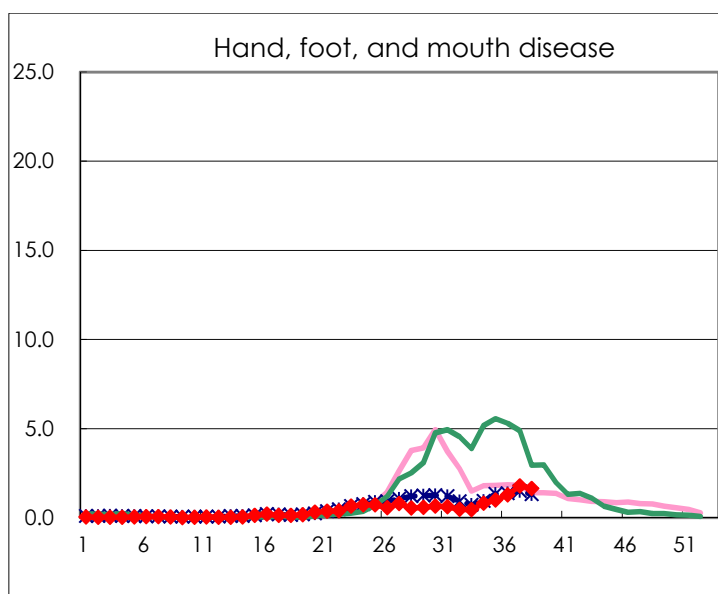
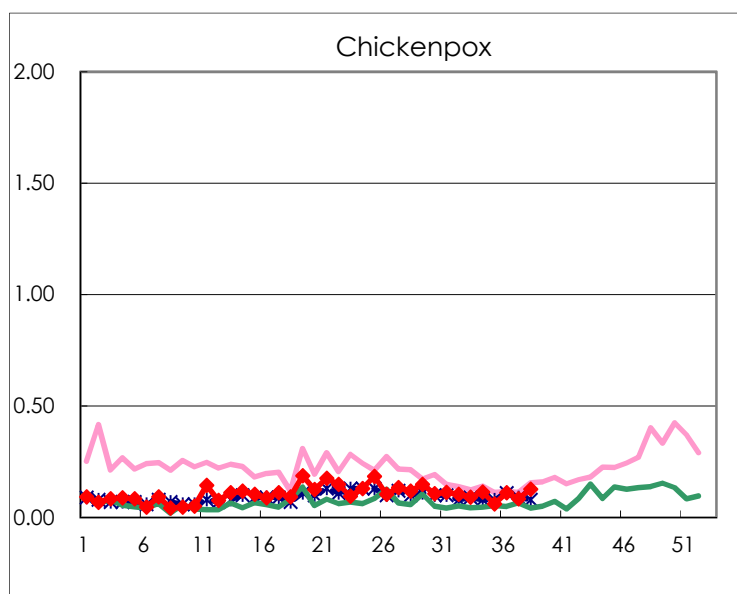
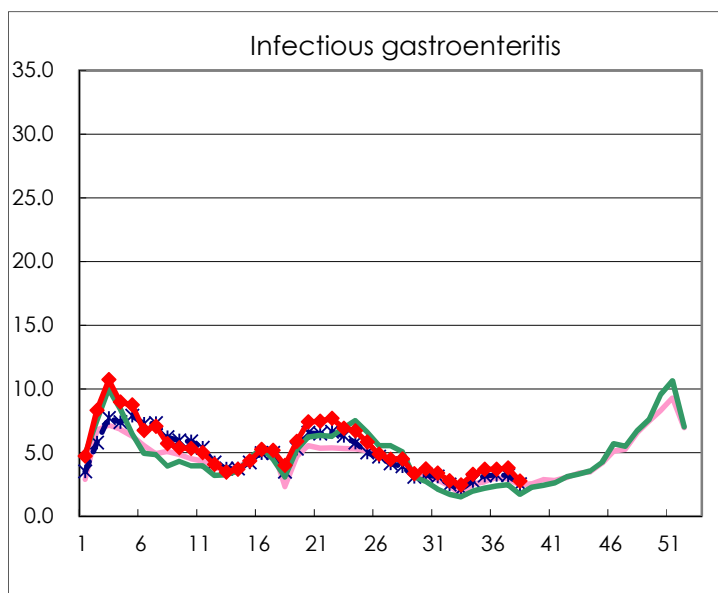
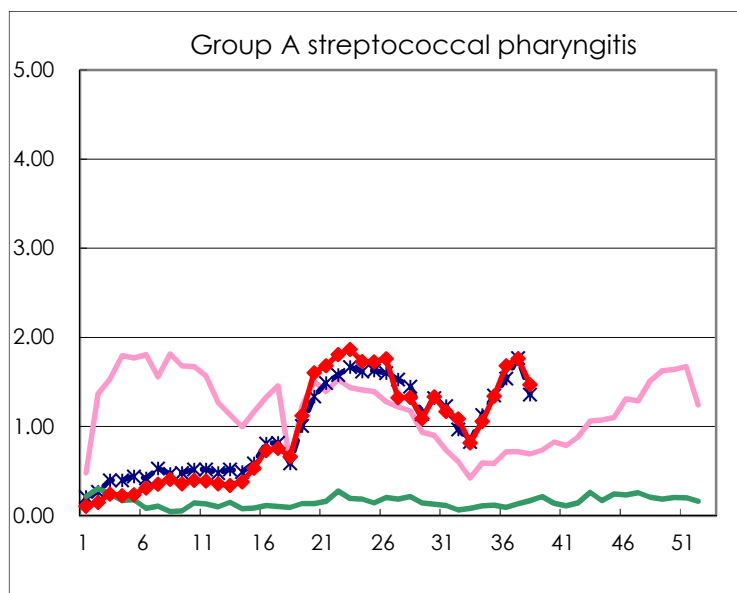
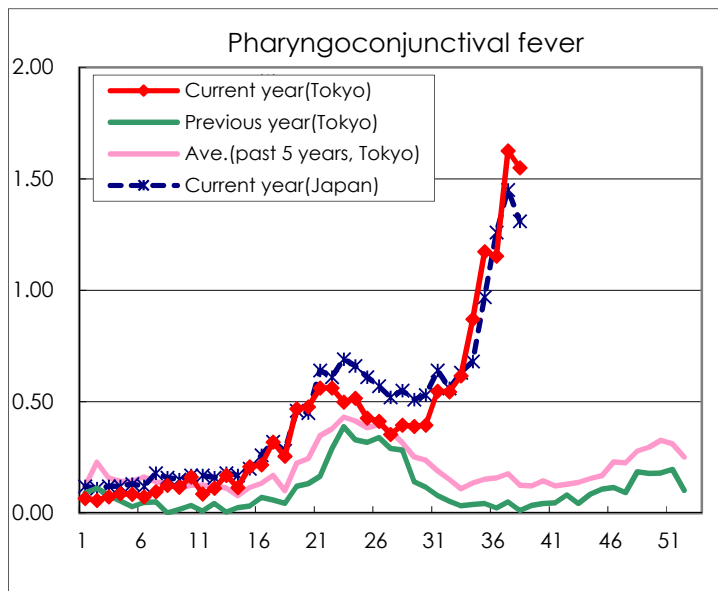
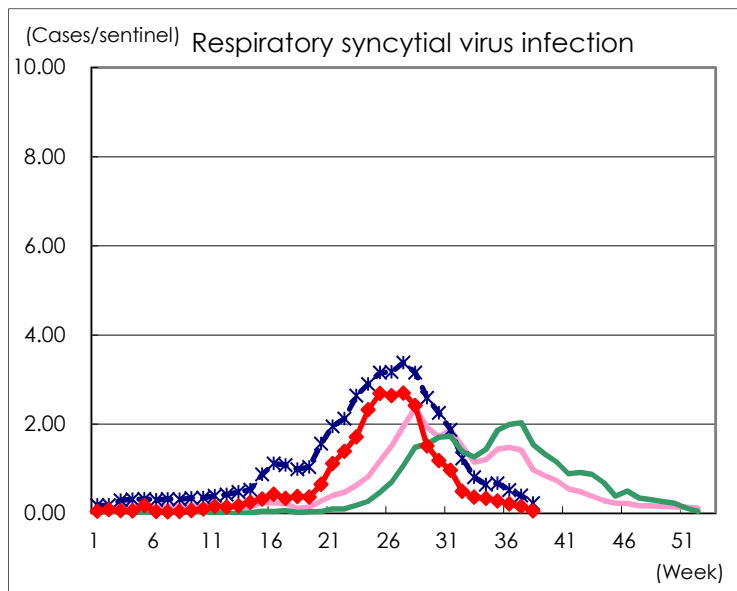
Category	Diseases	Tokyo					Japan	
		35th	36th	37th	38th	Cum 2023	38th	Cum 2023
V	Amebiasis	1		1	1	68	4	371
	Viral hepatitis(excluding hepatitis A and E)				1	38	2	181
	CRE infection	2	3	4	11	156	36	1,444
	Acute Flaccid Paralysis (excluding Acute poliomyelitis)					5		43
	Acute encephalitis(excluding JE and WNE)		3			25	5	397
	Cryptosporidiosis					1		8
	Creutzfeldt-Jakob disease	1		1		16	2	116
	Severe invasive streptococcal infections(TSLS)	1	3	1	1	84	10	604
	Acquired immunodeficiency syndrome (AIDS)	5	2	3	5	222	6	681
	Giardiasis					9		32
	Invasive <i>Haemophilus influenzae</i> disease	1	1	1	2	36	7	409
	Invasive meningococcal disease					1	1	12
	Invasive pneumococcal disease	5	2	6	4	146	10	1,277
	Varicella (limited to hospitalized case)			1		48	3	270
	Congenital rubella syndrome							
	Syphilis	75	61	72	60	2,720	163	10,957
	Disseminated cryptococcosis	1				13	2	124
	Tetanus					4		75
	Vancomycin-resistant <i>S. aureus</i> infection							
	Vancomycin-resistant <i>Enterococcus</i> infection	1		1	1	9		90
	Pertussis	1	1			90	8	677
Rubella					4	1	11	
Measles	1				7		25	
MDRA infection					1		11	

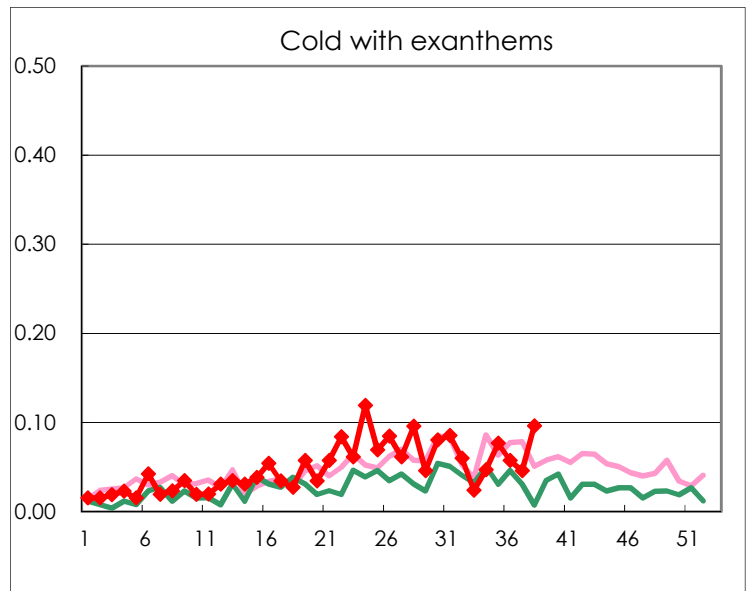
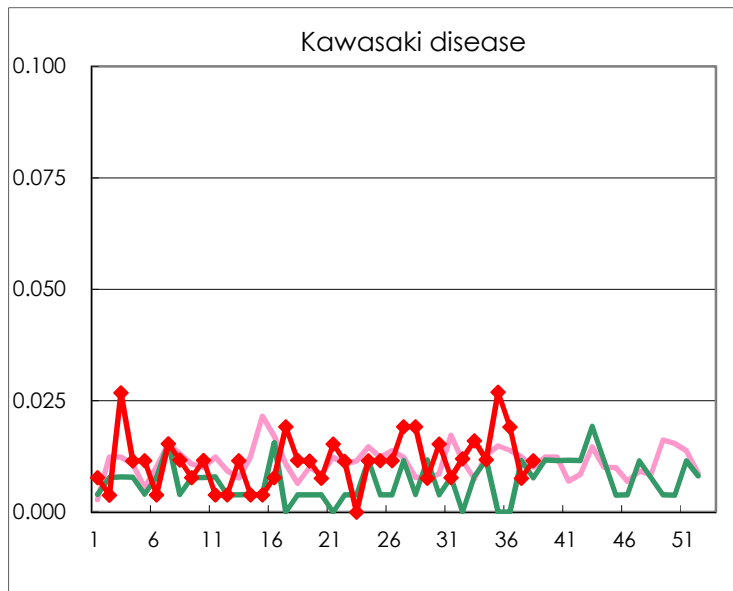
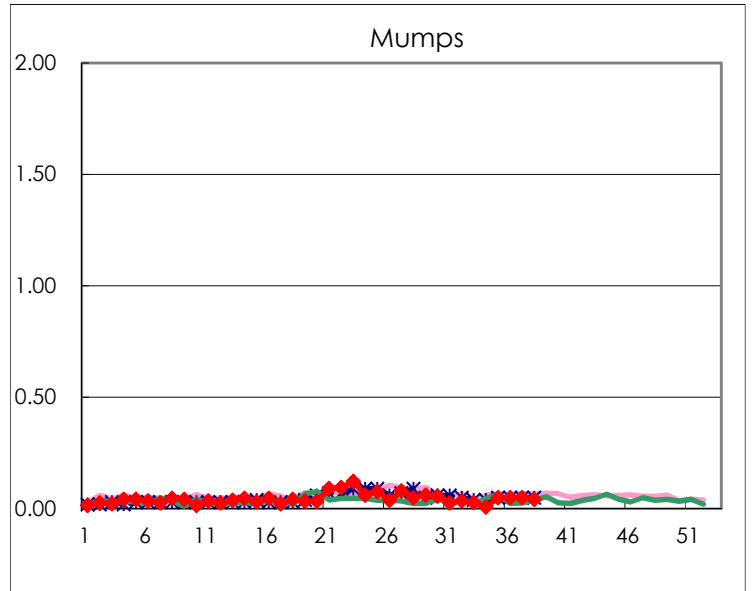
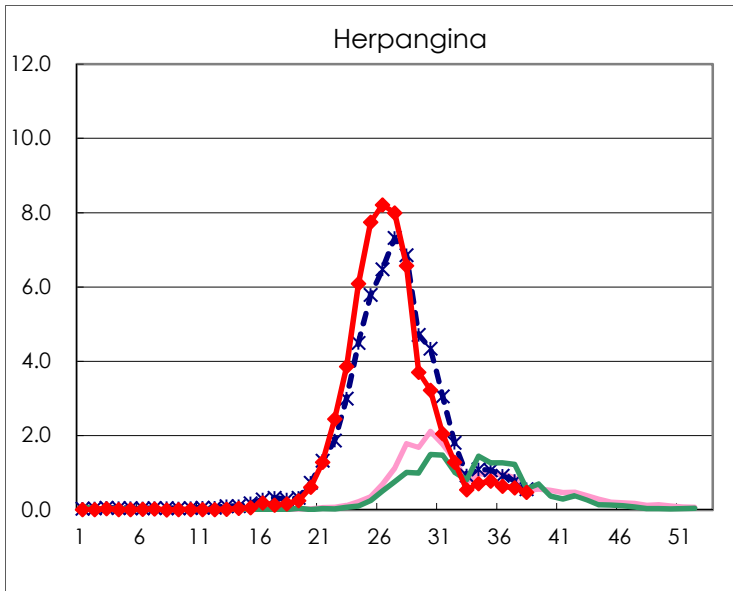
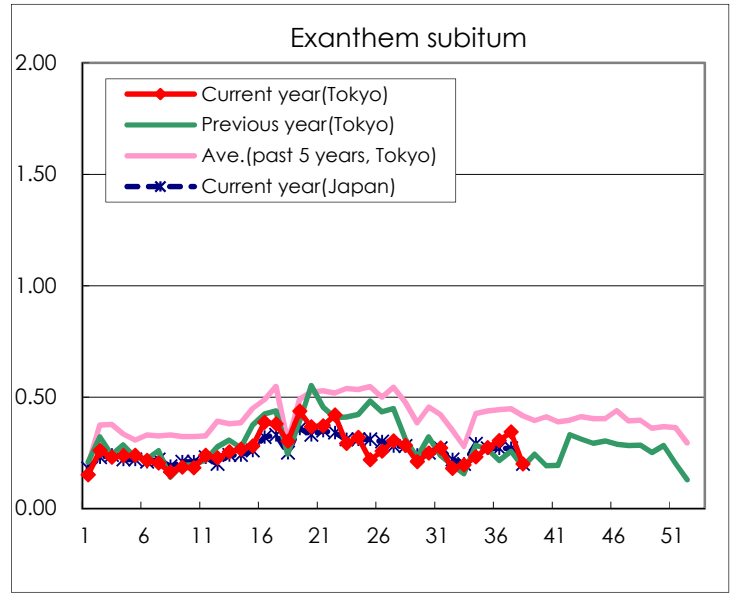
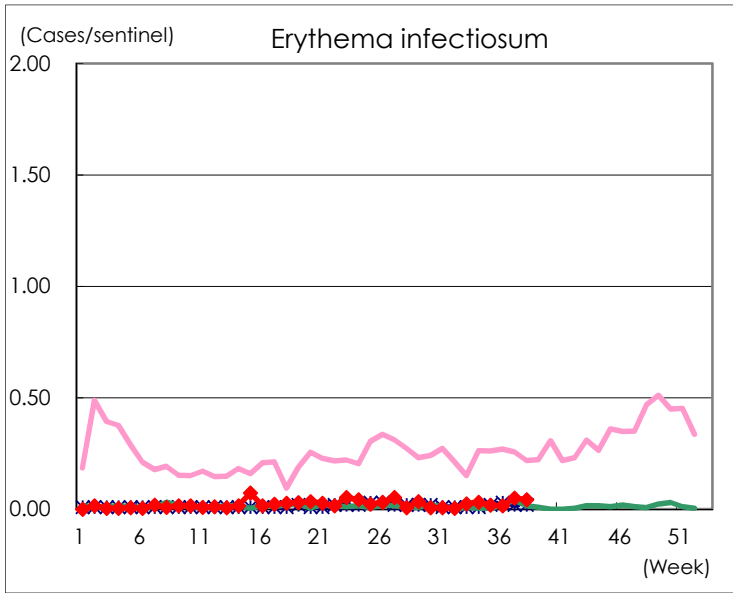
Number of patients with the diseases to be reported
by the designated clinics and hospitals

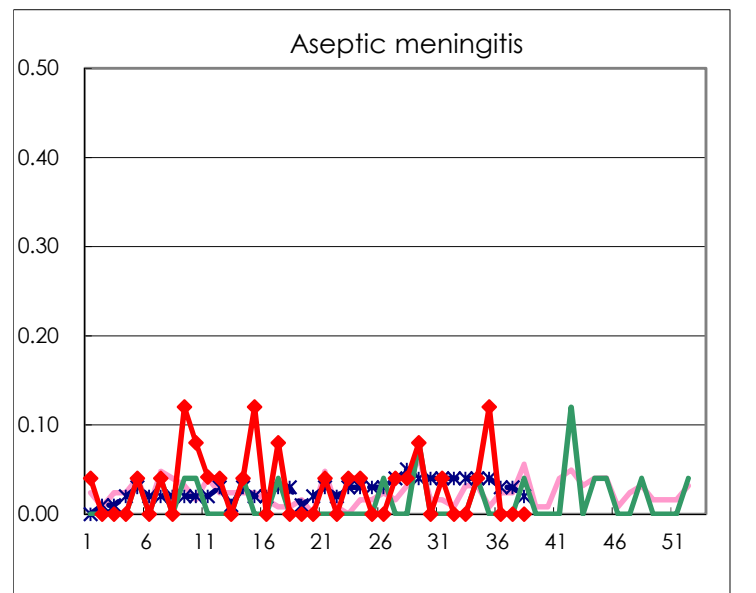
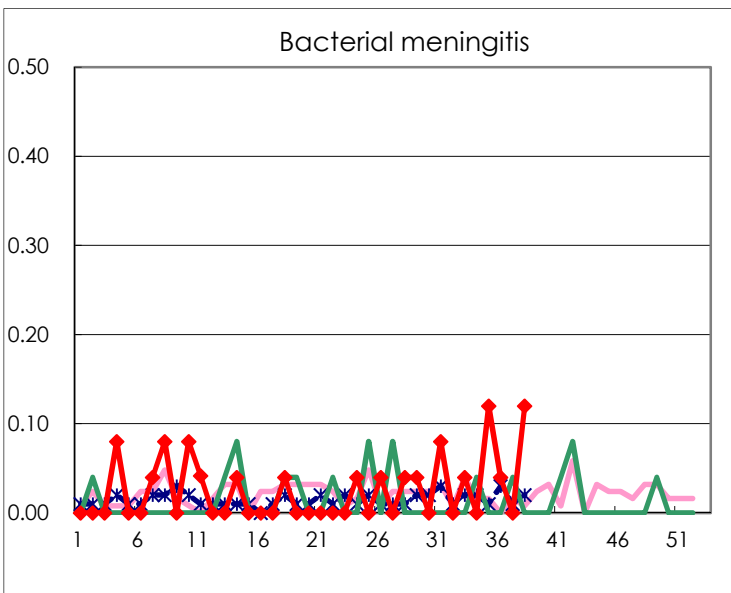
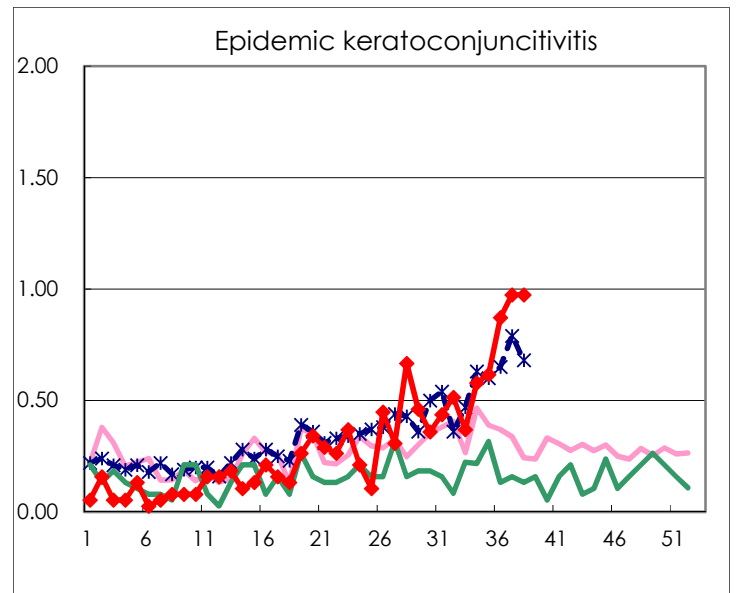
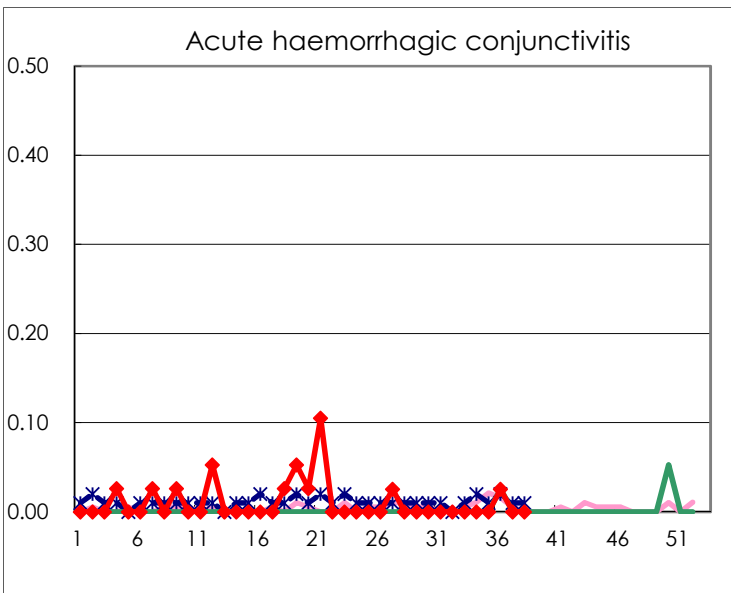
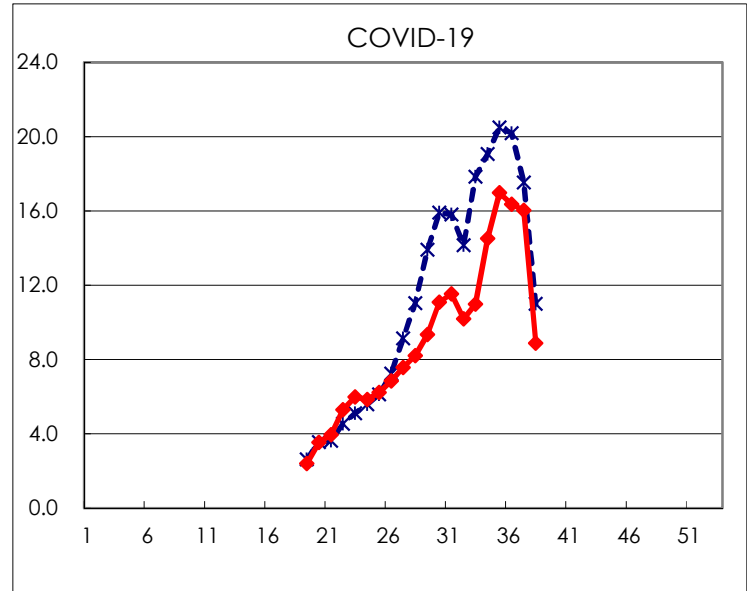
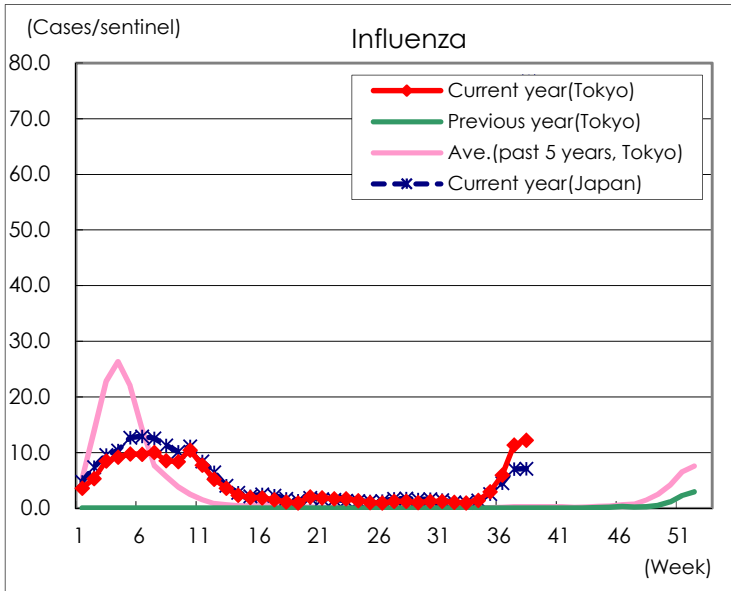
Diseases	Tokyo				
	35th	36th	37th	38th	/sentinel
Respiratory syncytial virus infection	72	55	41	14	0.05
Pharyngoconjunctival fever	305	302	426	403	1.55
Group A streptococcal pharyngitis	349	441	462	383	1.47
Infectious gastroenteritis	955	964	990	717	2.76
Chickenpox	16	29	22	33	0.13
Hand, foot, and mouth disease	259	338	469	429	1.65
Erythema infectiosum	5	4	13	11	0.04
Exanthem subitum	71	80	90	52	0.20
Herpangina	202	166	156	122	0.47
Mumps	13	13	13	11	0.04
Kawasaki disease	7	5	2	3	0.01
Cold with exanthems	20	15	12	25	0.10
Influenza	1,226	2,481	4,742	5,060	12.19
COVID-19	7,046	6,824	6,688	3,688	8.89
Acute hemorrhagic conjunctivitis		1			
Epidemic keratoconjunctivitis	24	34	38	38	0.97
Bacterial meningitis	3	1		3	0.12
Aseptic meningitis	3				
Mycoplasma pneumonia	1		1	1	0.04
Chlamydial pneumonia (excluding psittacosis)					
Infectious gastroenteritis (only by Rotavirus)		1			
Influenza-Associated Hospitalizations	16	10	13	23	0.92

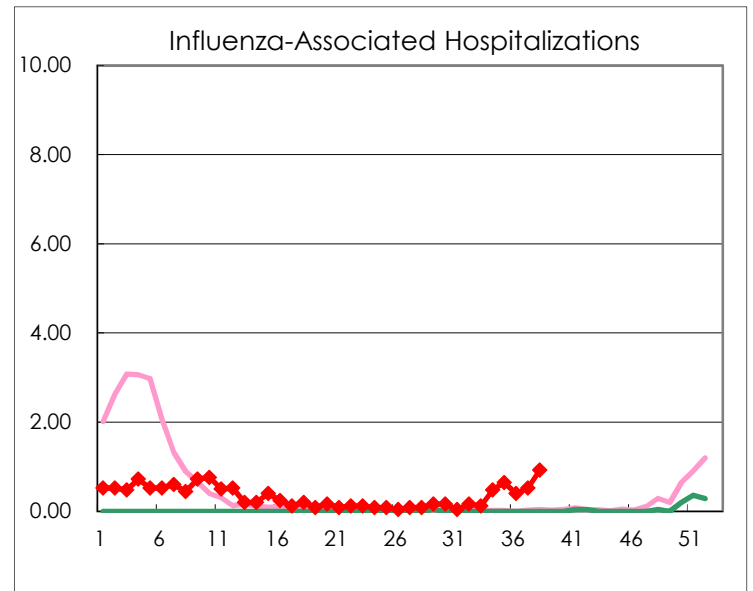
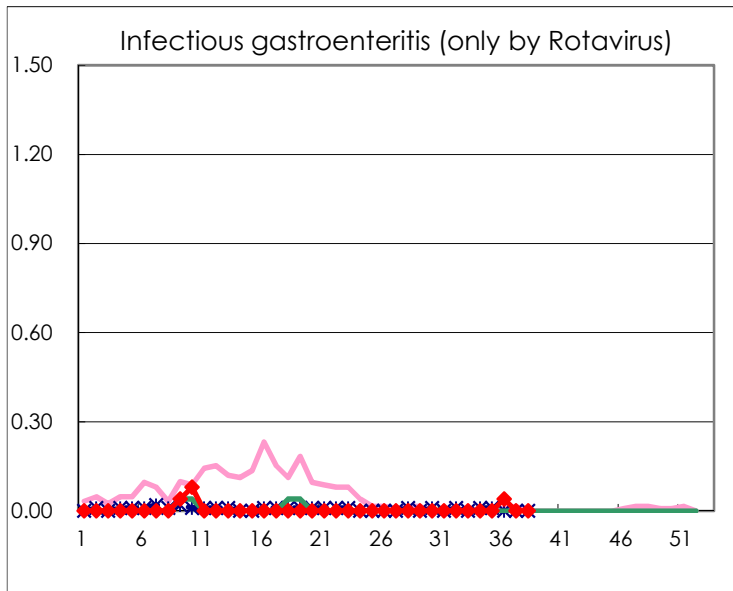
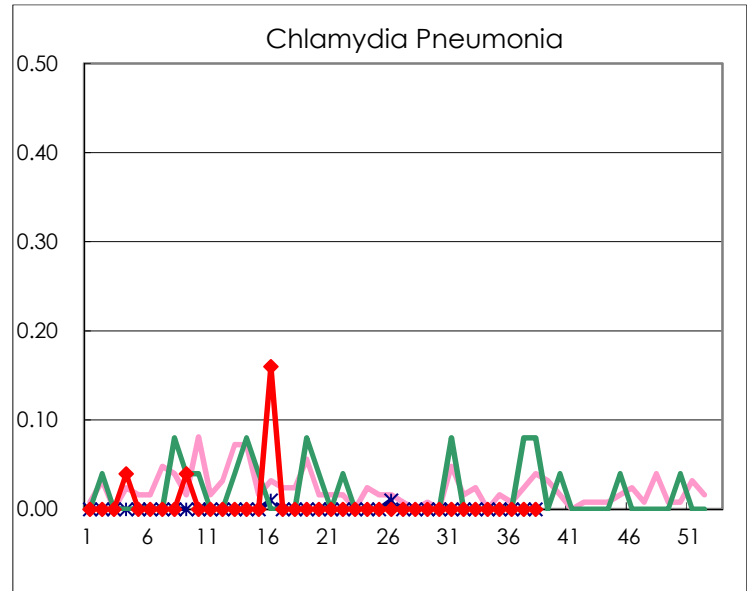
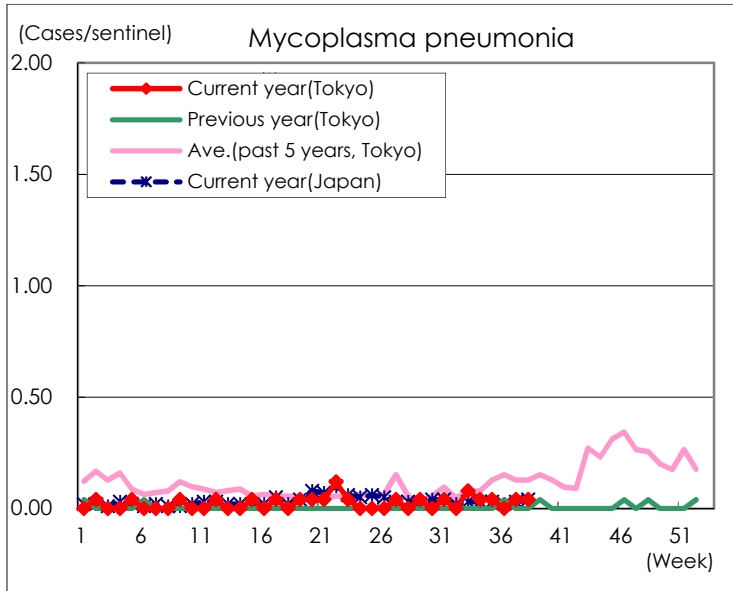
(Blank means 0.)

Disease Trend Graph (weekly reported cases per sentinel in comparison)









Number of sentinel facilities for weekly reporting		
Types of sentinels	Number of sentinels	Sentinels having reported
Pediatric	264	260
Influenza COVID-19	419	415
Ophthalmic	39	39
Specially-designated	25	25