

---

INFECTIOUS DISEASES WEEKLY REPORT

# TOKYO IDWR

Tokyo Metropolitan Infectious Disease Surveillance Center

**12 October 2023 / Number 40**  
**( 10/2 ~ 10/8 )**

## Surveillance System in Tokyo, Japan

The infectious diseases which all physicians must report  
All physicians must report to health centers the incidence of the diseases which are shown at page one. Health centers electronically report the individual cases to Tokyo Metropolitan Infectious Disease Surveillance Center.

The infectious diseases required to be reported by the sentinels  
The numbers of patients who visit the sentinel clinics or hospitals during a week are reported to health centers in Tokyo. And they electronically report the numbers to Tokyo Metropolitan Infectious Disease Surveillance Center. We have about 500 sentinel clinics and hospitals in Tokyo.

Tokyo Metropolitan Institute of Public Health

TEL:81-3-3363-3213 FAX:81-3-5332-7365

e-mail:tmiph@section.metro.tokyo.jp

URL:idsc.tmiph.metro.tokyo.lg.jp/

---

Number of patients with the diseases which all physicians must report

Category	Diseases	Tokyo					Japan	
		37th	38th	39th	40th	Cum 2023	40th	Cum 2023
I	Ebola hemorrhagic fever							
	Crimean-Congo hemorrhagic fever							
	Smallpox							
	South American hemorrhagic fever							
	Plague							
	Marburg disease							
II	Lassa fever							
	Acute poliomyelitis							
	Tuberculosis	45	28	38	52	1,531	260	10,809
	Diphtheria							
	Severe Acute Respiratory Syndrome(SARS)							
	Middle East Respiratory Syndrome (MERS)							
	Avian influenza H5N1							
III	Avian influenza H7N9							
	Cholera					2		2
	Shigellosis			1		7	2	30
	Enterohemorrhagic Escherichia coli infection	15	5	10	15	337	73	2,910
	Typhoid fever	1		1	1	7	1	32
	Paratyphoid fever	1		1		3		8
IV	Hepatitis E	3	1		3	134	8	430
	West Nile fever							
	Hepatitis A		1	1		8		38
	Echinococcosis							11
	Mpox	4	2	2	2	152	2	201
	Yellow fever							
	Psittacosis							8
	Omsk hemorrhagic fever							
	Relapsing fever							21
	Kyasanur forest disease							
	Q fever							
	Rabies							
	Coccidioidomycosis							2
	Zika virus infection						1	1
	Severe Fever with Thrombocytopenia Syndrome						5	122
	Hemorrhagic fever with renal syndrome							
	Western equine encephalitis							
	Tick-borne encephalitis							
	Anthrax							
	Chikungunya fever			1		1		4
	Scrub typhus(Tsutsugamushi disease)					5	1	118
	Dengue fever		3	3	1	36	4	118
	Eastern equine encephalitis							
	Avian influenza (excluding H5N1 and H7N9)							
	Nipah virus infection							
	Japanese spotted fever					1	27	373
	Japanese encephalitis							2
	Hantavirus pulmonary syndrome							
	Herpes B virus infection							
	Glanders							
	Brucellosis							1
	Venezuelan equine encephalitis							
	Hendra virus infection							
	Epidemic typhus							
	Botulism							
	Malaria	2		1		7	1	22
Tularemia								
Lyme disease					1		26	
Lyssavirus infection(excluding rabies)								
Rift valley fever								
Melioidosis								
Legionellosis	5	8	5	6	134	56	1,753	
Leptospirosis			2		4	1	33	
Rocky mountain spotted fever								

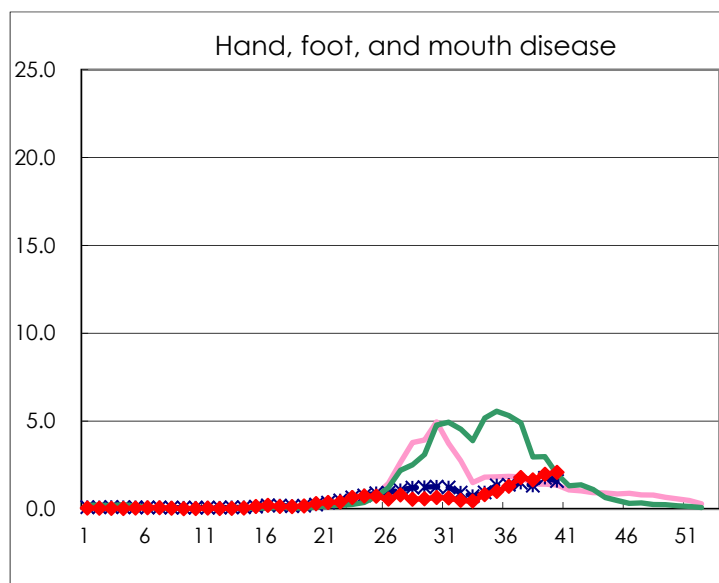
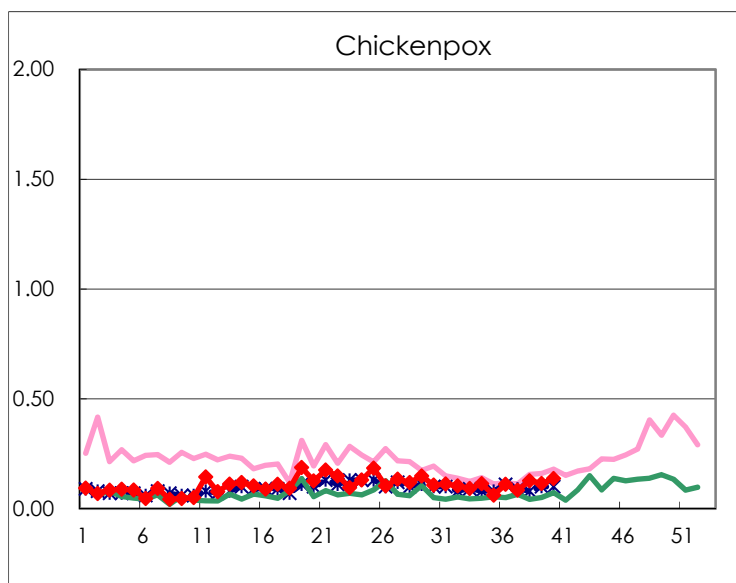
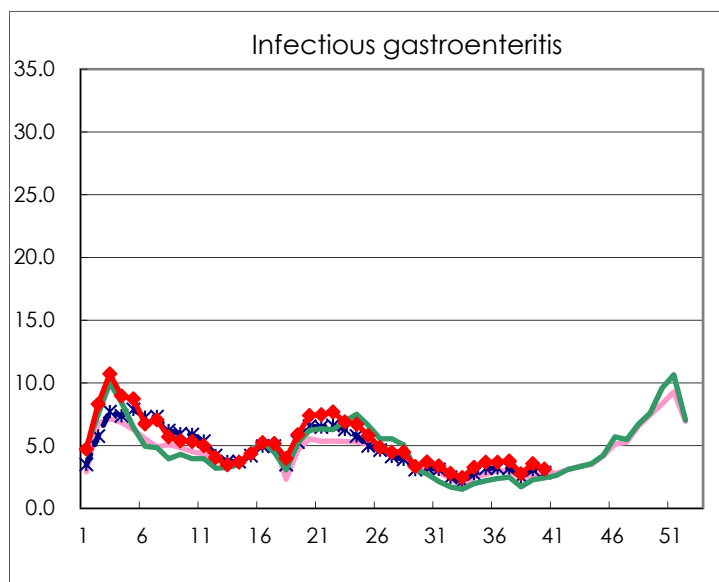
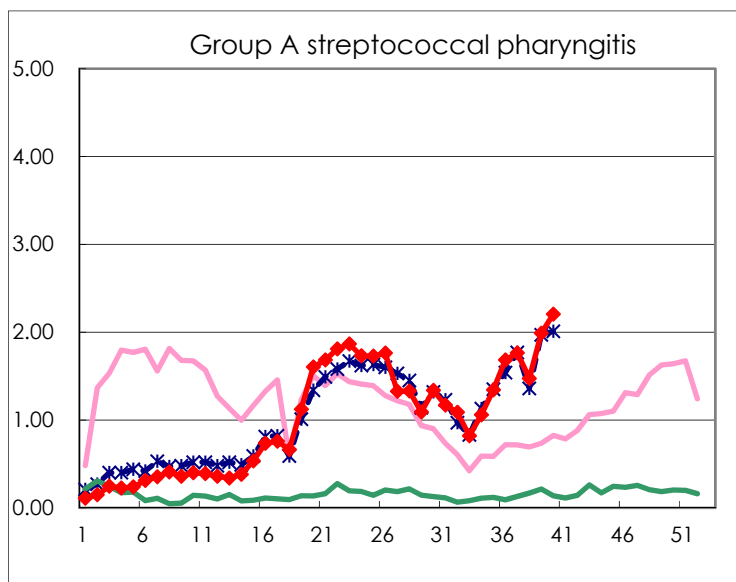
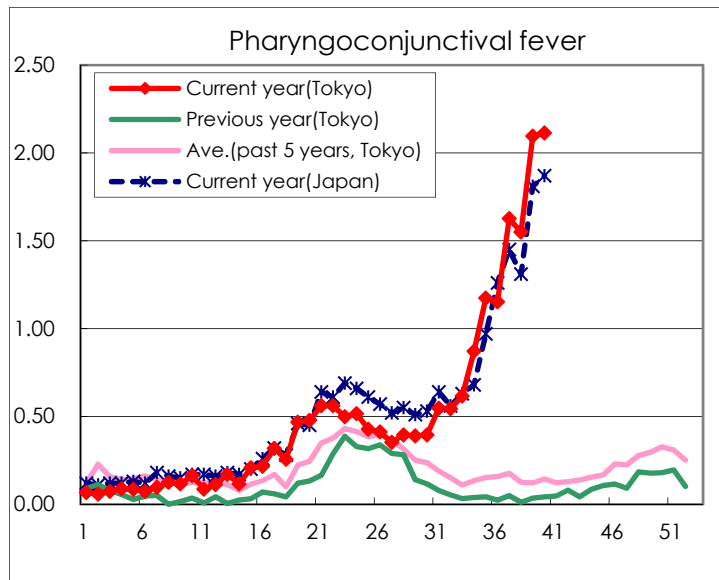
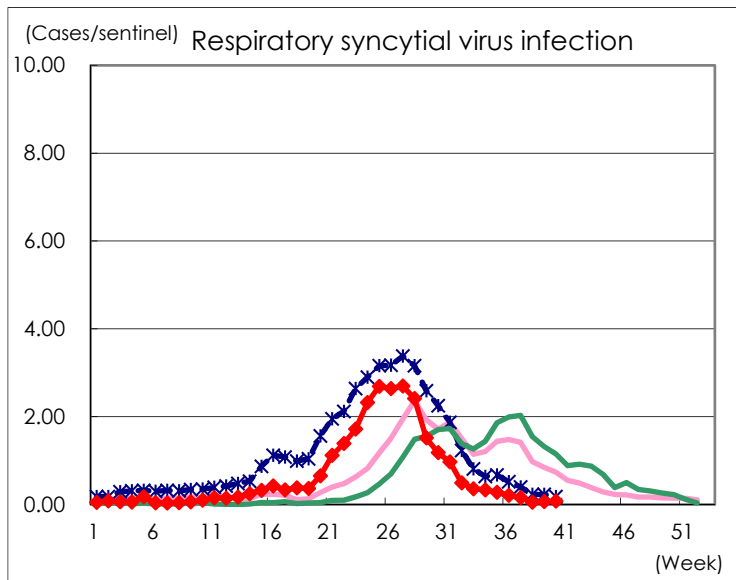
Category	Diseases	Tokyo					Japan	
		37th	38th	39th	40th	Cum 2023	40th	Cum 2023
V	Amebiasis	1	1	4	5	77	7	395
	Viral hepatitis(excluding hepatitis A and E)		1			38	1	192
	CRE infection	4	12	5	5	167	34	1,538
	Acute Flaccid Paralysis (excluding Acute poliomyelitis)			1		6	1	46
	Acute encephalitis(excluding JE and WNE)	1	1		1	28	10	430
	Cryptosporidiosis					1	1	9
	Creutzfeldt-Jakob disease	1				16	1	121
	Severe invasive streptococcal infections(TSLs)	1	1	3	4	91	10	631
	Acquired immunodeficiency syndrome (AIDS)	3	5	5	5	232	5	709
	Giardiasis					9		34
	Invasive <i>Haemophilus influenzae</i> disease	1	2	2		38	9	432
	Invasive meningococcal disease			1		2		13
	Invasive pneumococcal disease	6	4	1	2	149	15	1,332
	Varicella (limited to hospitalized case)	1			2	50	6	286
	Congenital rubella syndrome							
	Syphilis	73	61	56	80	2,859	162	11,546
	Disseminated cryptococcosis			1		14	1	130
	Tetanus			1		5	3	81
	Vancomycin-resistant <i>S. aureus</i> infection							
	Vancomycin-resistant <i>Enterococcus</i> infection	1	1			9	3	96
Pertussis			4	1	95	26	728	
Rubella					4		11	
Measles					7		25	
MDRA infection					1		11	

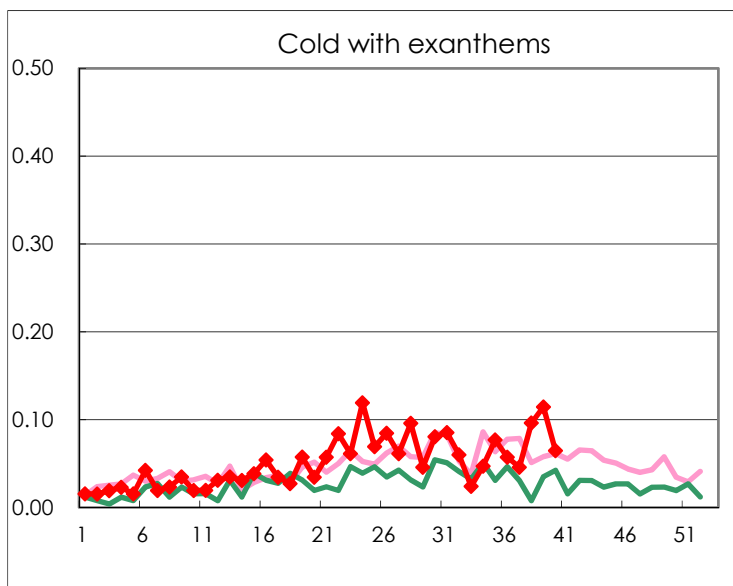
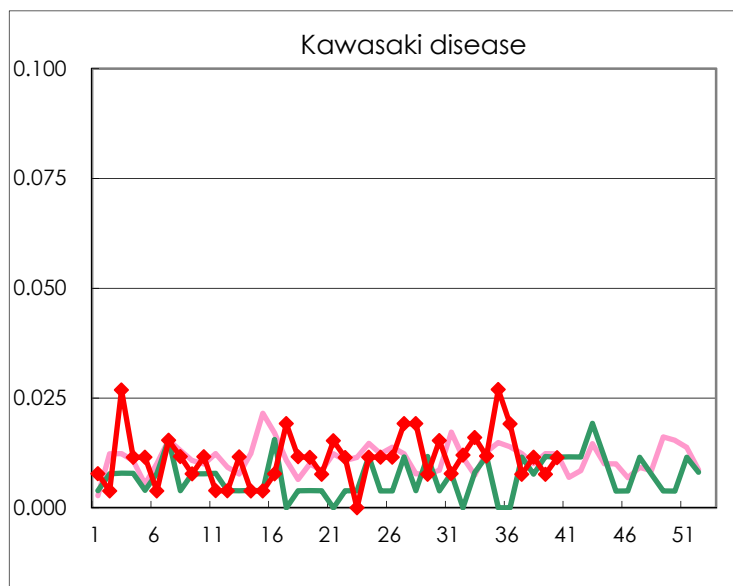
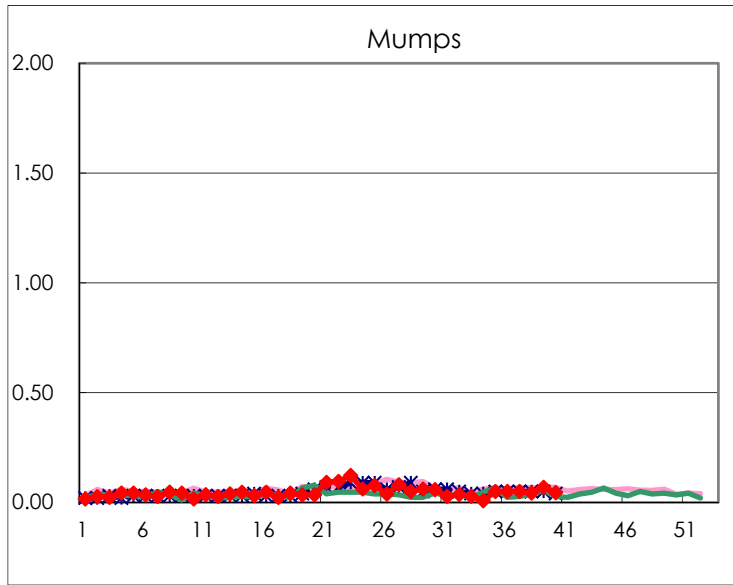
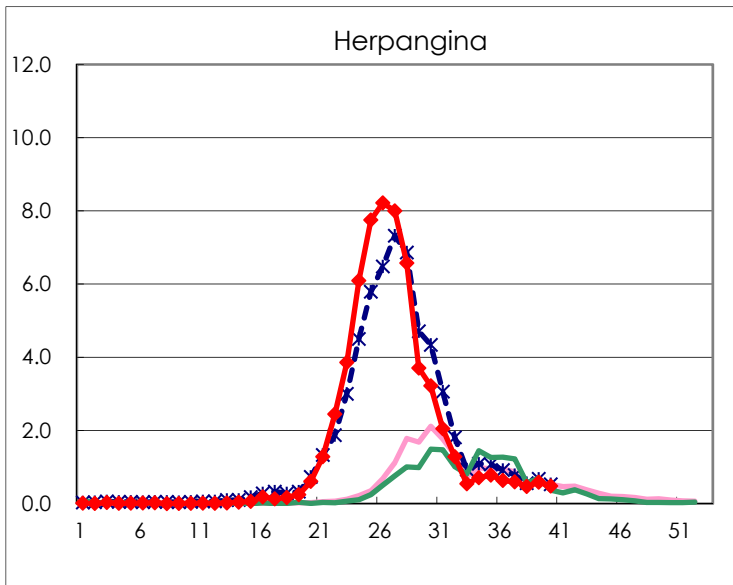
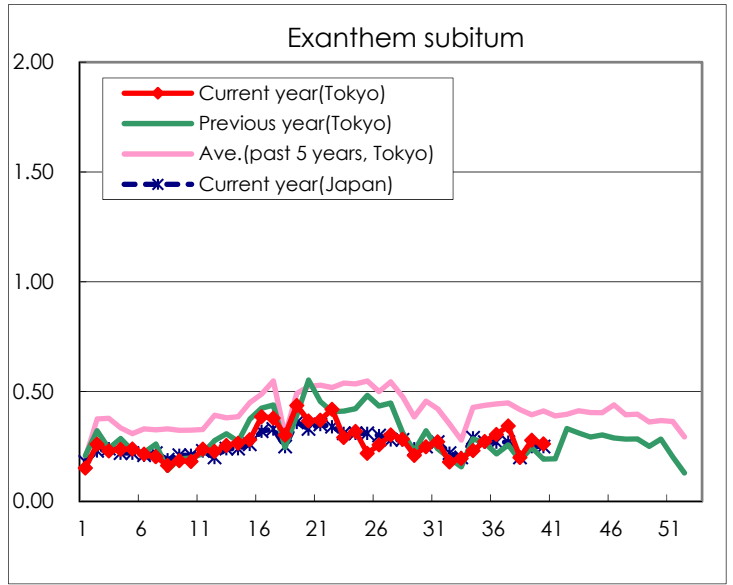
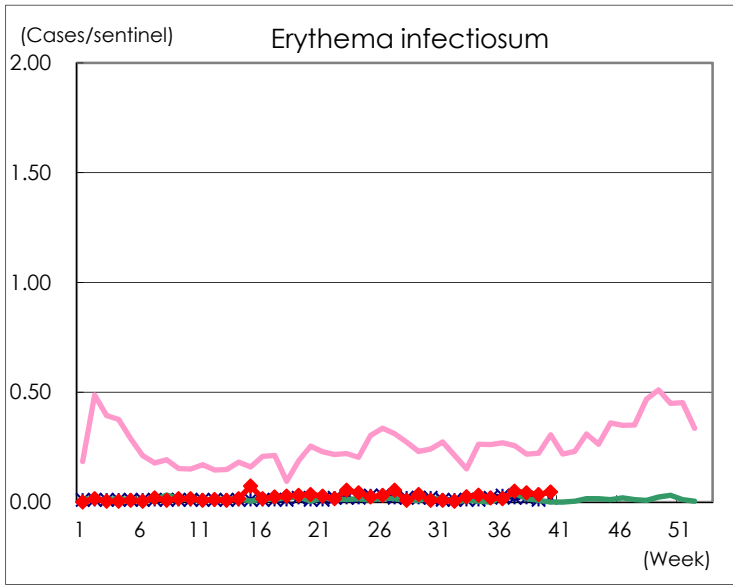
Number of patients with the diseases to be reported  
by the designated clinics and hospitals

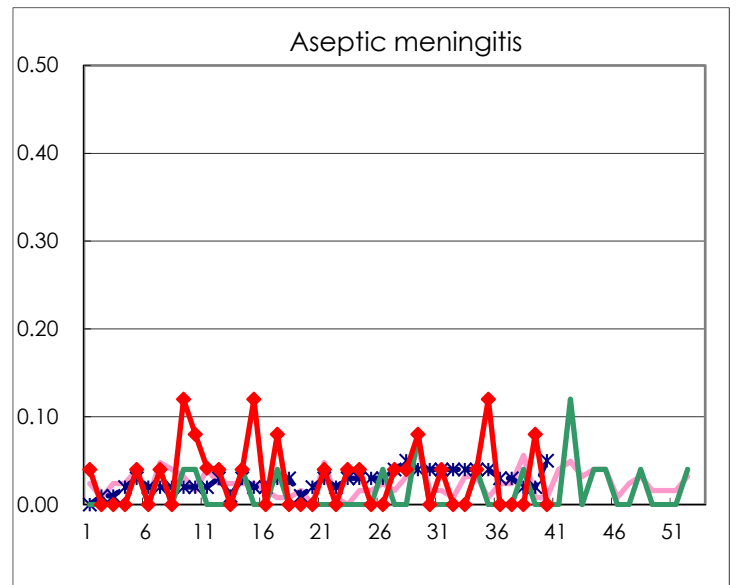
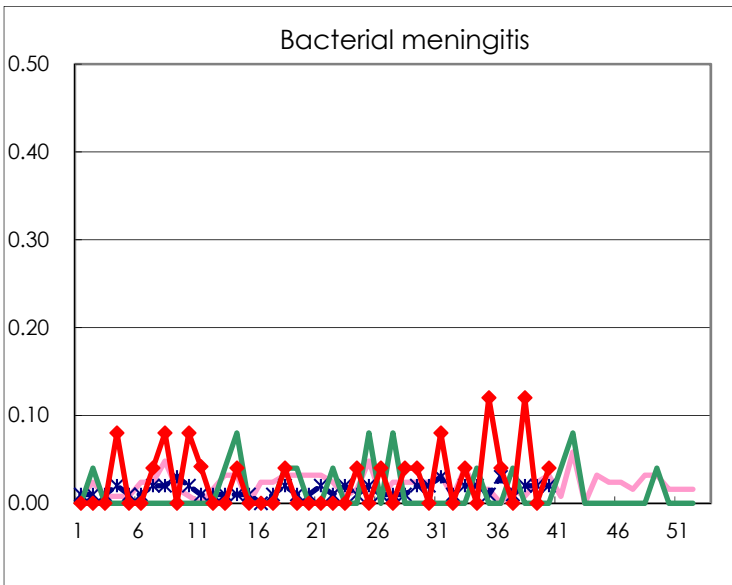
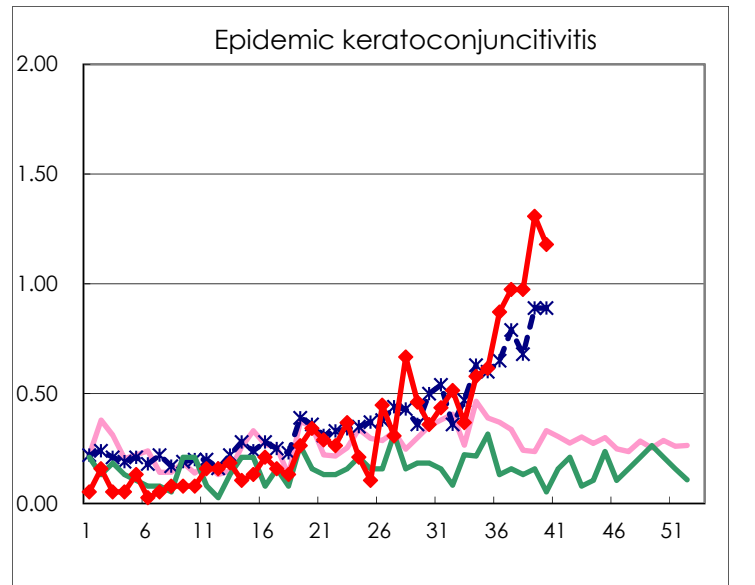
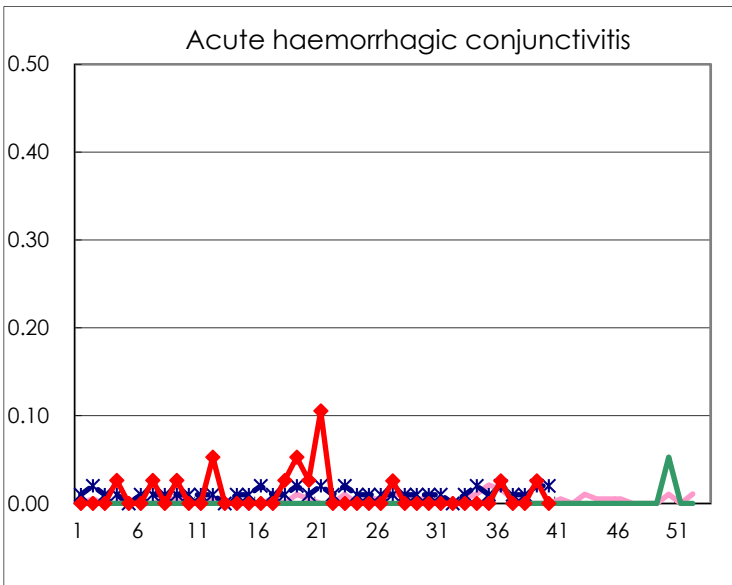
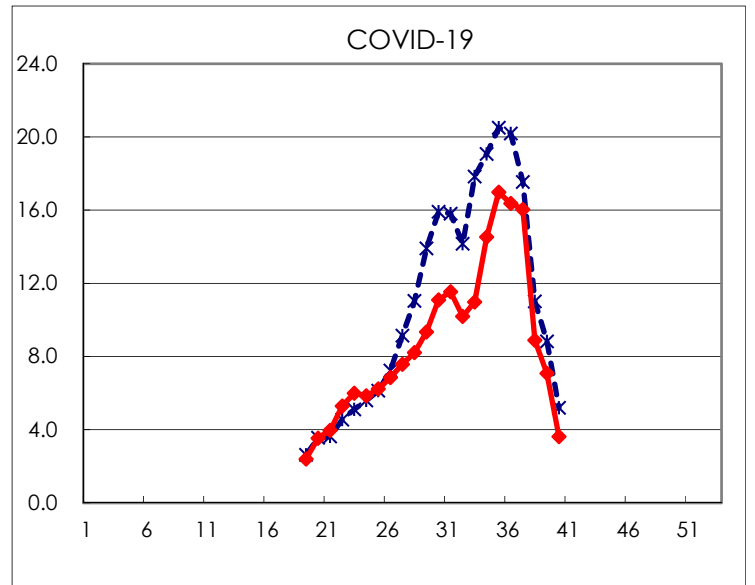
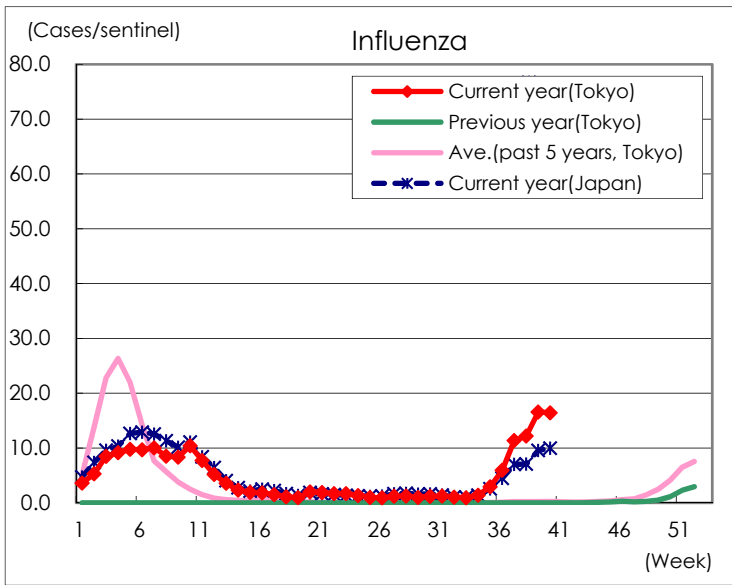
Diseases	Tokyo				
	37th	38th	39th	40th	/sentinel
Respiratory syncytial virus infection	41	14	17	20	0.08
Pharyngoconjunctival fever	426	403	549	556	2.11
Group A streptococcal pharyngitis	462	383	521	580	2.21
Infectious gastroenteritis	990	717	934	822	3.13
Chickenpox	22	33	30	36	0.14
Hand, foot, and mouth disease	469	429	517	546	2.08
Erythema infectiosum	13	11	9	12	0.05
Exanthem subitum	90	52	73	69	0.26
Herpangina	156	122	153	126	0.48
Mumps	13	11	18	12	0.05
Kawasaki disease	2	3	2	3	0.01
Cold with exanthems	12	25	30	17	0.06
Influenza	4,742	5,060	6,913	6,873	16.44
COVID-19	6,688	3,688	2,951	1,514	3.62
Acute hemorrhagic conjunctivitis			1		
Epidemic keratoconjunctivitis	38	38	51	46	1.18
Bacterial meningitis		3		1	0.04
Aseptic meningitis			2		
Mycoplasma pneumonia	1	1		1	0.04
Chlamydial pneumonia (excluding psittacosis)			1		
Infectious gastroenteritis (only by Rotavirus)					
Influenza-Associated Hospitalizations	13	24	28	31	1.24
COVID-19-Associated Hospitalizations			145	97	3.88

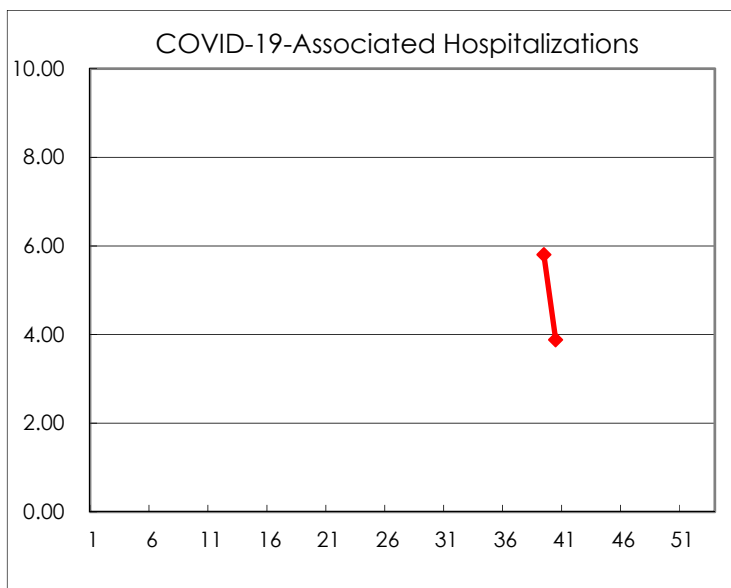
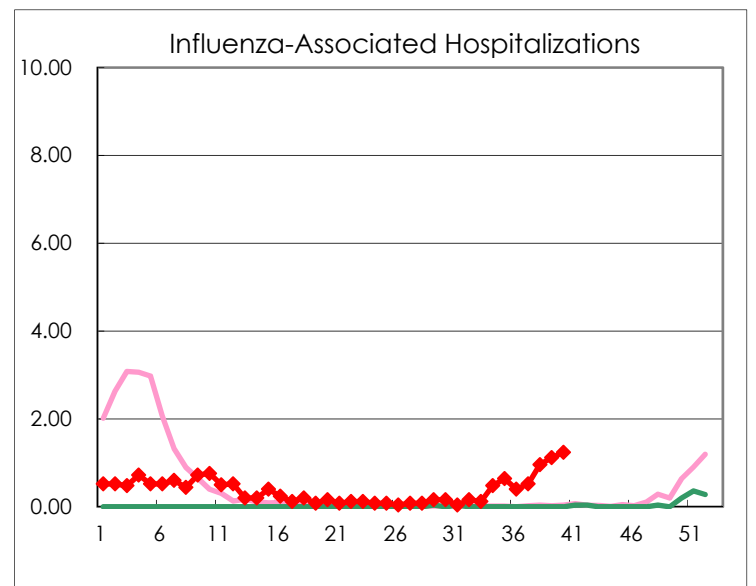
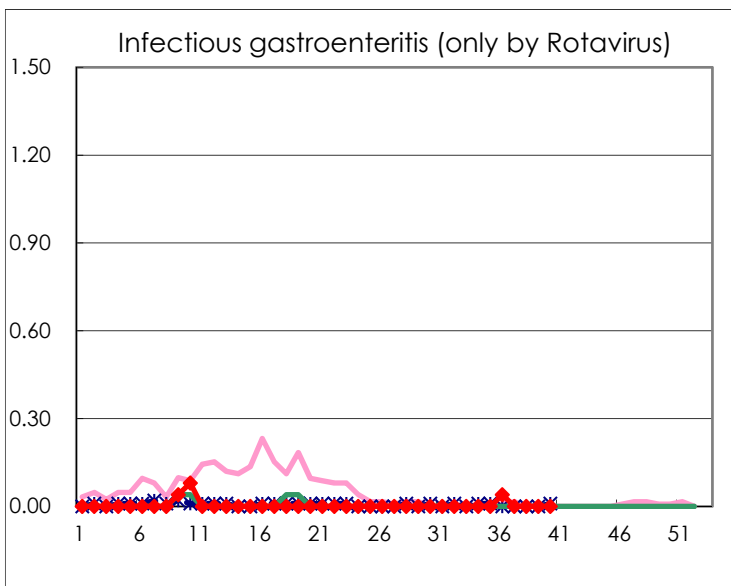
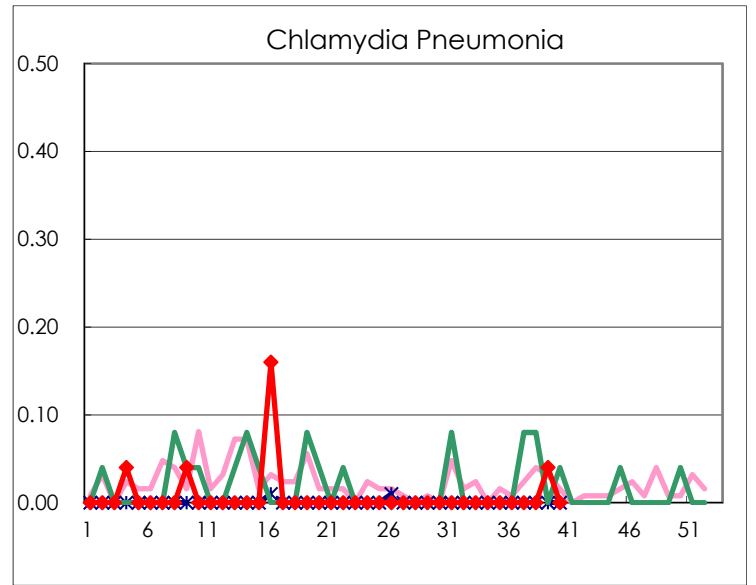
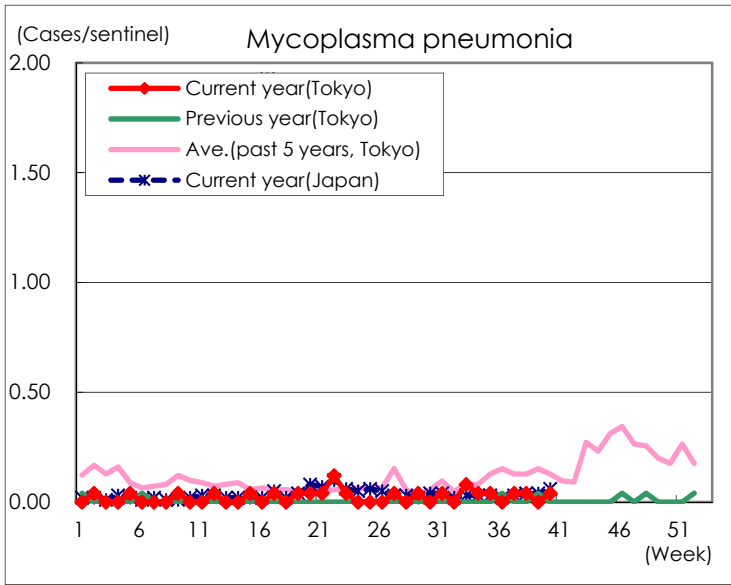
( Blank means 0. )

# Disease Trend Graph (weekly reported cases per sentinel in comparison)









Number of sentinel facilities for weekly reporting		
Types of sentinels	Number of sentinels	Sentinels having reported
Pediatric	264	263
Influenza COVID-19	419	418
Ophthalmic	39	39
Specially-designated	25	25