
INFECTIOUS DISEASES WEEKLY REPORT

TOKYO IDWR

Tokyo Metropolitan Infectious Disease Surveillance Center

26 October 2023 / Number 42
(10/16 ~ 10/22)

Surveillance System in Tokyo, Japan

The infectious diseases which all physicians must report
All physicians must report to health centers the incidence of the diseases which are shown at page one. Health centers electronically report the individual cases to Tokyo Metropolitan Infectious Disease Surveillance Center.

The infectious diseases required to be reported by the sentinels
The numbers of patients who visit the sentinel clinics or hospitals during a week are reported to health centers in Tokyo. And they electronically report the numbers to Tokyo Metropolitan Infectious Disease Surveillance Center. We have about 500 sentinel clinics and hospitals in Tokyo.

Tokyo Metropolitan Institute of Public Health

TEL:81-3-3363-3213 FAX:81-3-5332-7365

e-mail:tmiph@section.metro.tokyo.jp

URL:idsc.tmiph.metro.tokyo.lg.jp/

Number of patients with the diseases which all physicians must report

Category	Diseases	Tokyo					Japan	
		39th	40th	41st	42nd	Cum 2023	42nd	Cum 2023
I	Ebola hemorrhagic fever							
	Crimean-Congo hemorrhagic fever							
	Smallpox							
	South American hemorrhagic fever							
	Plague							
	Marburg disease							
	Lassa fever							
II	Acute poliomyelitis							
	Tuberculosis	39	55	33	45	1,615	215	11,390
	Diphtheria							
	Severe Acute Respiratory Syndrome(SARS)							
	Middle East Respiratory Syndrome (MERS)							
	Avian influenza H5N1							
	Avian influenza H7N9							
III	Cholera					2		2
	Shigellosis	1				7	1	32
	Enterohemorrhagic Escherichia coli infection	10	16	17	15	370	98	3,122
	Typhoid fever	1	1	1		8		34
	Paratyphoid fever	1				3		8
IV	Hepatitis E		3		5	139	10	451
	West Nile fever							
	Hepatitis A	1	1			9	1	41
	Echinococcosis							12
	Mpox	2	2	1	1	154	1	204
	Yellow fever							
	Psittacosis							8
	Omsk hemorrhagic fever							
	Relapsing fever							21
	Kyasanur forest disease							
	Q fever							
	Rabies							
	Coccidioidomycosis							2
	Zika virus infection							1
	Severe Fever with Thrombocytopenia Syndrome						1	125
	Hemorrhagic fever with renal syndrome							
	Western equine encephalitis							
	Tick-borne encephalitis							
	Anthrax							
	Chikungunya fever	1				1	1	6
	Scrub typhus(Tsutsugamushi disease)					5	1	120
	Dengue fever	3	1		1	37	4	124
	Eastern equine encephalitis							
	Avian influenza (excluding H5N1 and H7N9)							
	Nipah virus infection							
	Japanese spotted fever					1	21	421
	Japanese encephalitis						2	4
	Hantavirus pulmonary syndrome							
	Herpes B virus infection							
	Glanders							
	Brucellosis							1
	Venezuelan equine encephalitis							
	Hendra virus infection							
Epidemic typhus								
Botulism								
Malaria	1		2		9		24	
Tularemia								
Lyme disease					1	1	29	
Lyssavirus infection(excluding rabies)								
Rift valley fever								
Melioidosis								
Legionellosis	5	6	1		135	44	1,856	
Leptospirosis	2				4	1	38	
Rocky mountain spotted fever								

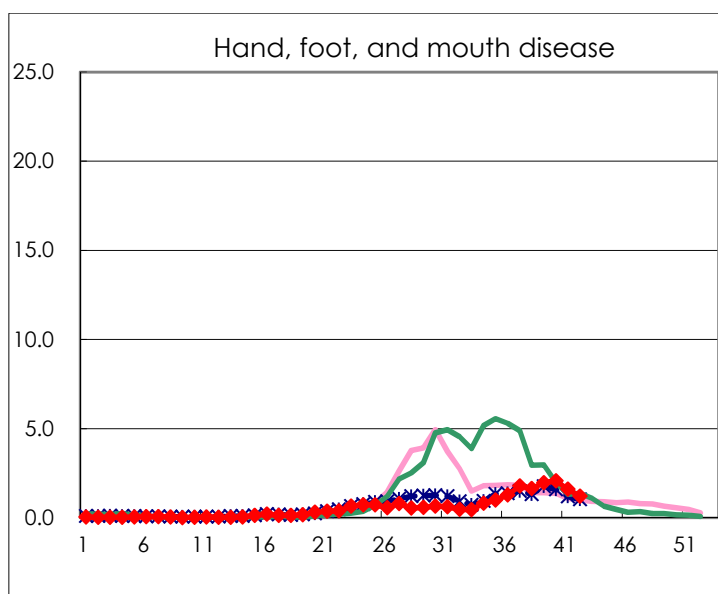
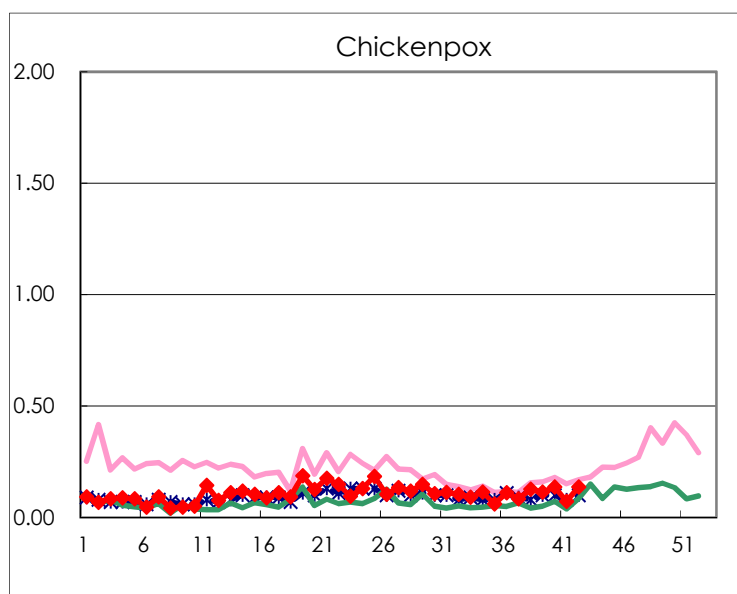
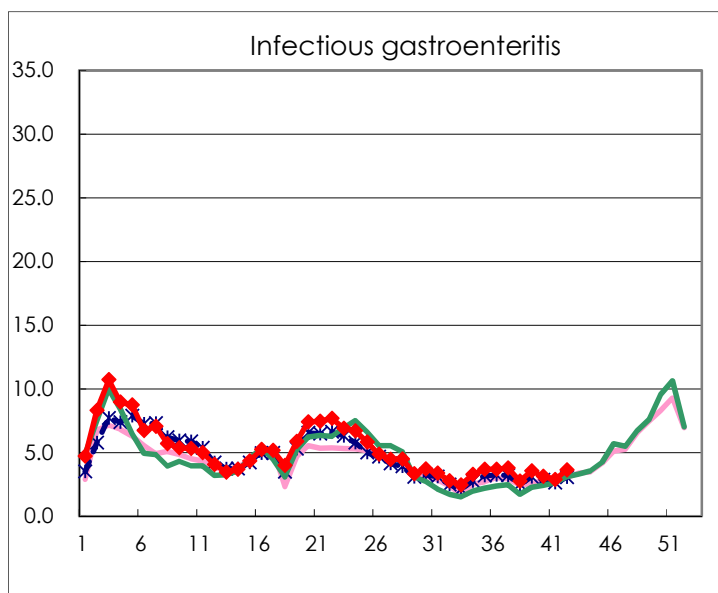
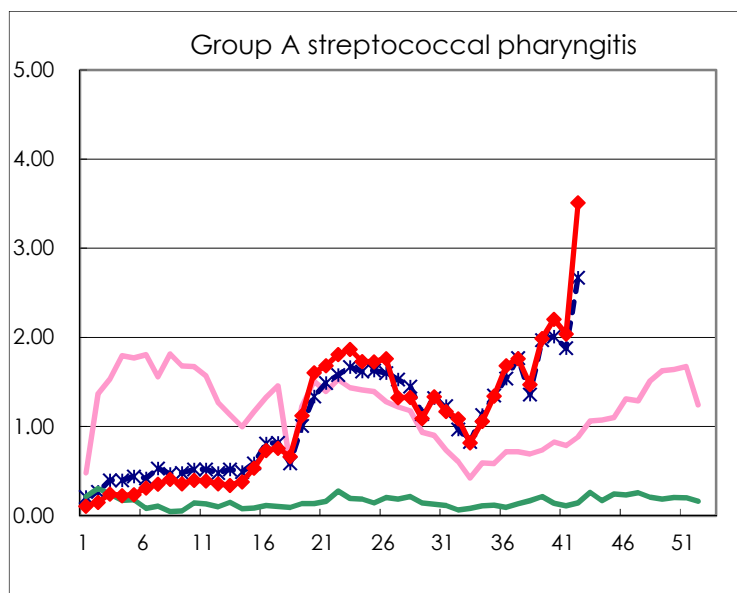
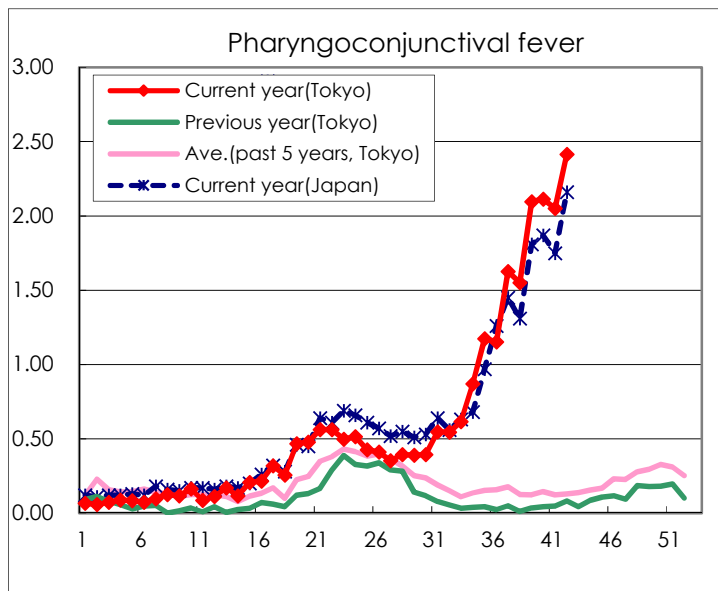
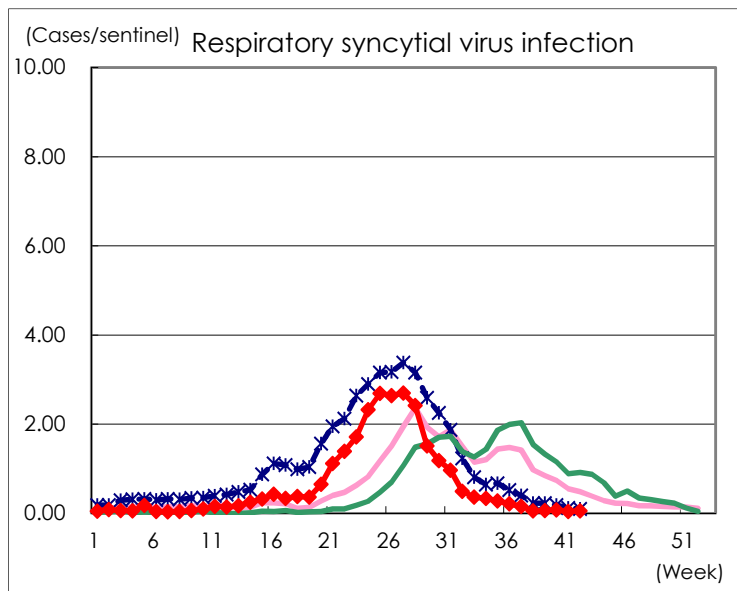
Category	Diseases	Tokyo					Japan	
		39th	40th	41st	42nd	Cum 2023	42nd	Cum 2023
V	Amebiasis	4	5		1	78	5	403
	Viral hepatitis(excluding hepatitis A and E)					38	3	195
	CRE infection	5	6	2	4	174	43	1,645
	Acute Flaccid Paralysis (excluding Acute poliomyelitis)	1				6	2	49
	Acute encephalitis(excluding JE and WNE)		1	3	1	32	21	467
	Cryptosporidiosis					1		10
	Creutzfeldt-Jakob disease					16	2	128
	Severe invasive streptococcal infections(TSLS)	4	5	2	3	98	13	670
	Acquired immunodeficiency syndrome (AIDS)	5	5	3	9	244	18	752
	Giardiasis			1		10		35
	Invasive <i>Haemophilus influenzae</i> disease	2		3		41	3	450
	Invasive meningococcal disease	1				2		13
	Invasive pneumococcal disease	1	2	2	3	154	28	1,393
	Varicella (limited to hospitalized case)		2	1	1	52	5	302
	Congenital rubella syndrome							
	Syphilis	57	86	81	69	3,016	172	12,165
	Disseminated cryptococcosis	1				14	4	139
	Tetanus	1			1	6	5	88
	Vancomycin-resistant <i>S. aureus</i> infection							
	Vancomycin-resistant <i>Enterococcus</i> infection					9	1	100
	Pertussis	4	1	2	2	99	30	786
Rubella					4		11	
Measles					7		25	
MDRA infection		1		1	3	1	13	

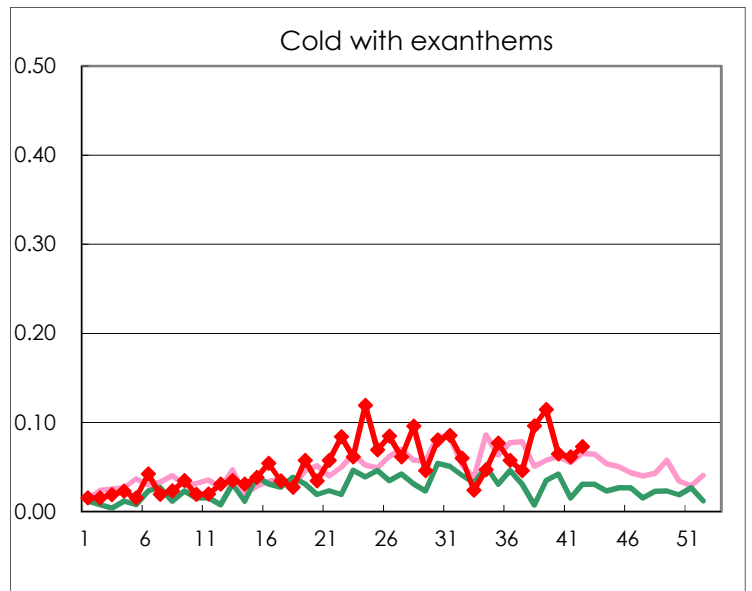
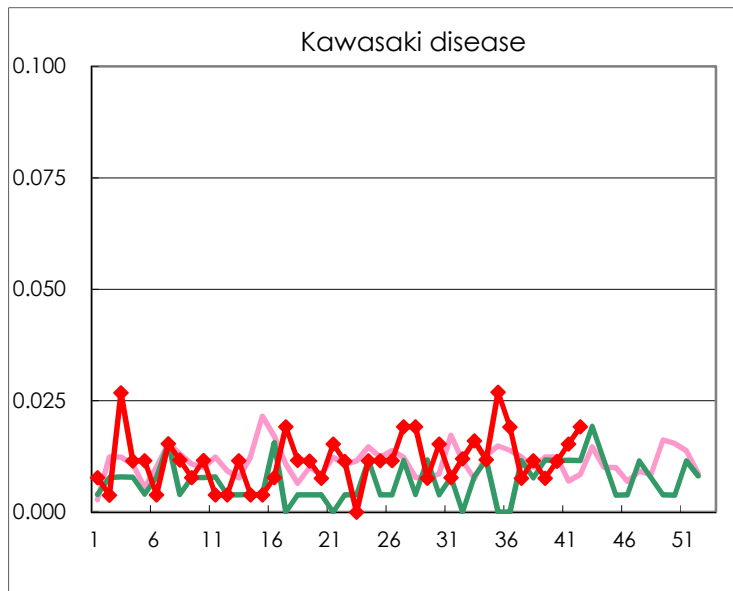
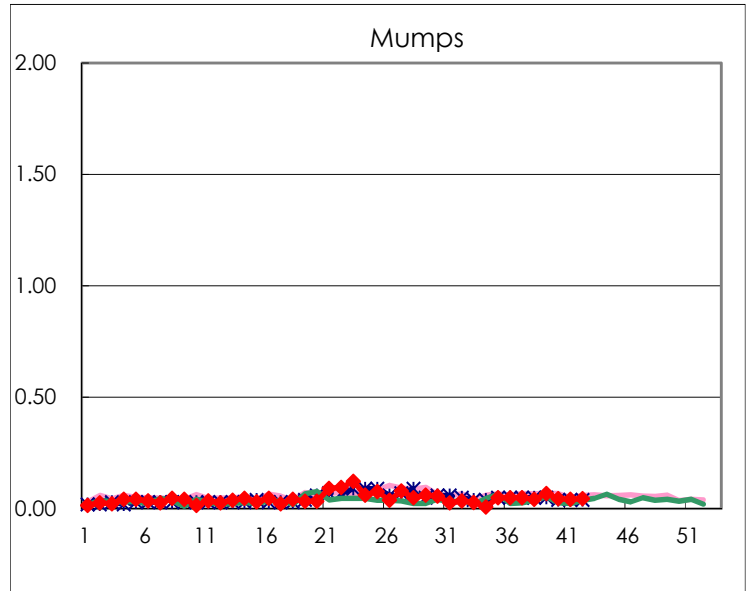
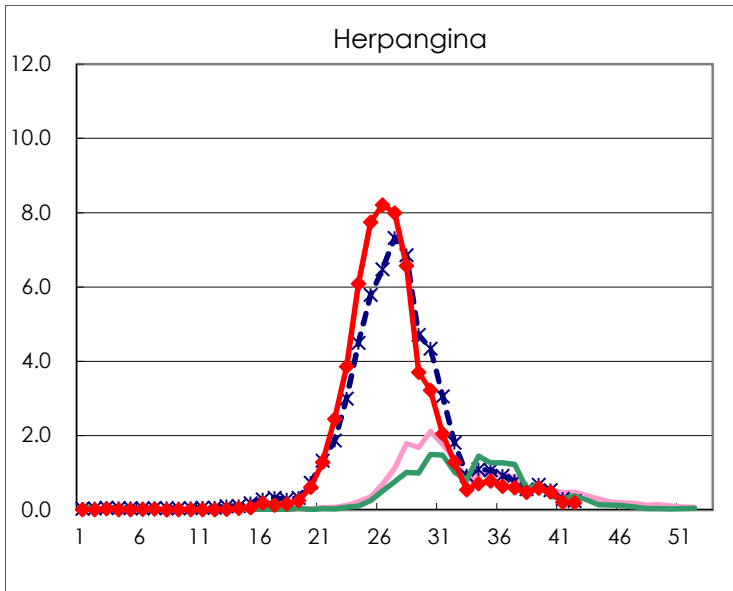
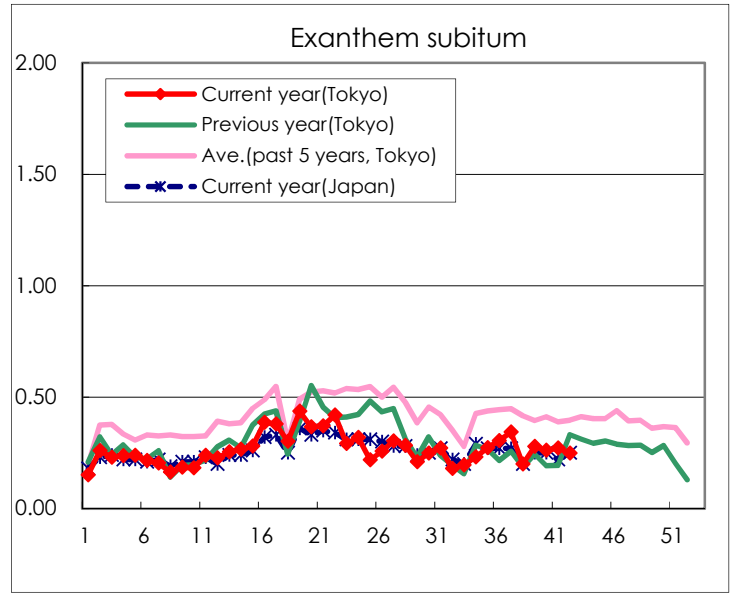
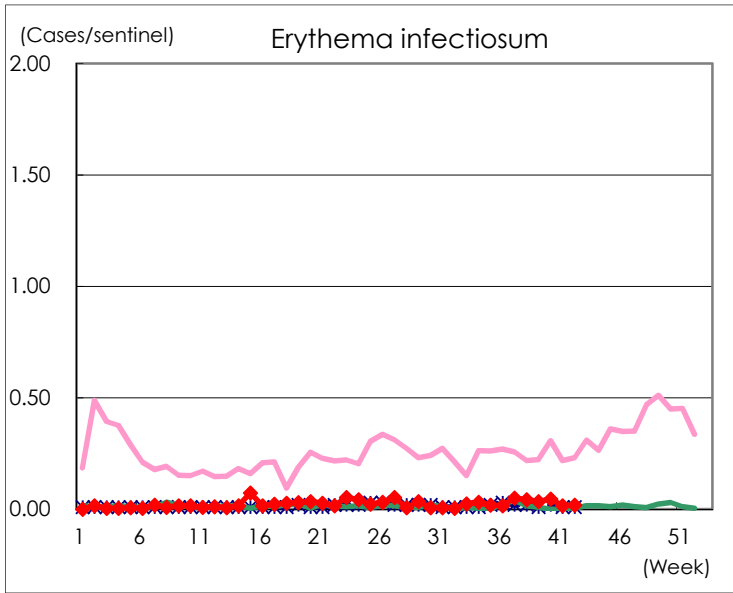
Number of patients with the diseases to be reported
by the designated clinics and hospitals

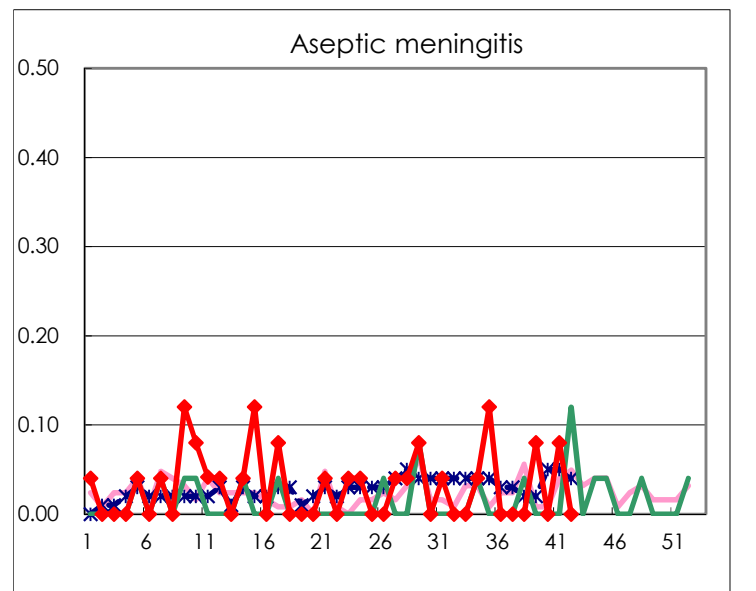
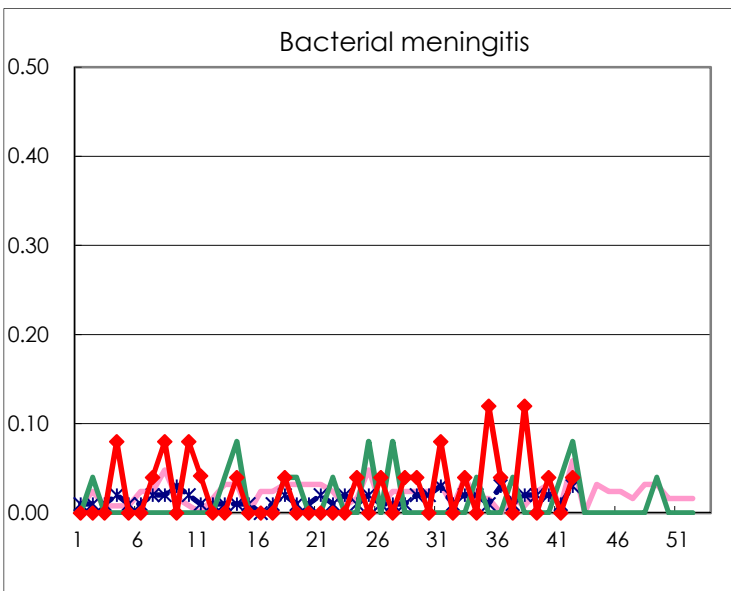
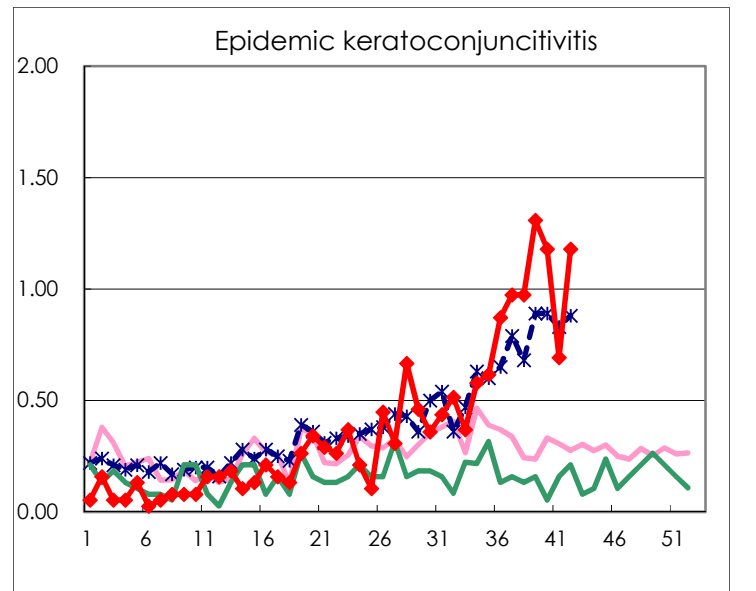
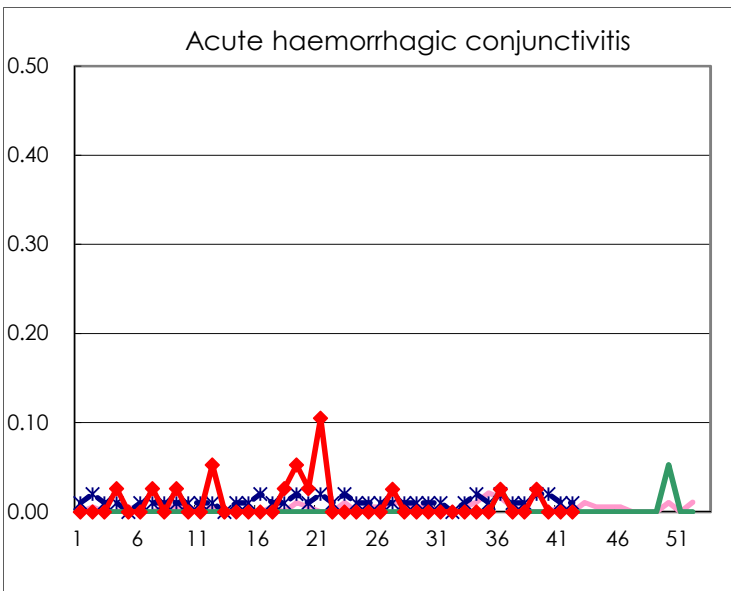
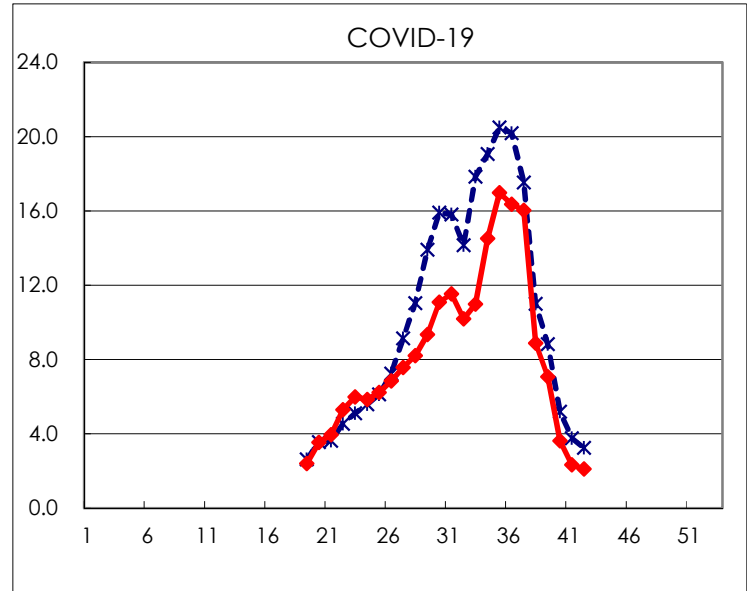
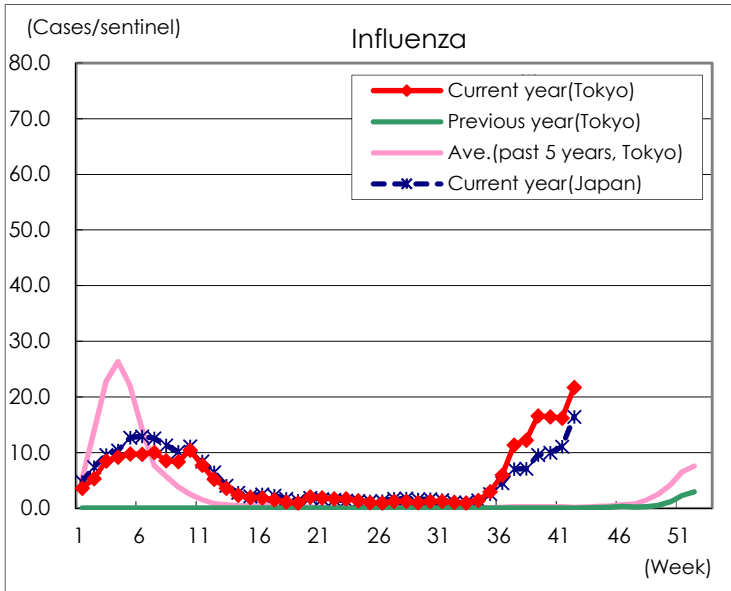
Diseases	Tokyo				
	39th	40th	41st	42nd	/sentinel
Respiratory syncytial virus infection	17	20	11	15	0.06
Pharyngoconjunctival fever	549	556	535	630	2.41
Group A streptococcal pharyngitis	521	580	532	916	3.51
Infectious gastroenteritis	934	822	749	949	3.64
Chickenpox	30	36	19	36	0.14
Hand, foot, and mouth disease	517	546	417	317	1.21
Erythema infectiosum	9	12	4	5	0.02
Exanthem subitum	73	69	71	65	0.25
Herpangina	153	126	54	51	0.20
Mumps	18	12	11	12	0.05
Kawasaki disease	2	3	4	5	0.02
Cold with exanthems	30	17	16	19	0.07
Influenza	6,913	6,873	6,733	9,044	21.74
COVID-19	2,951	1,514	971	878	2.11
Acute hemorrhagic conjunctivitis	1				
Epidemic keratoconjunctivitis	51	46	27	46	1.18
Bacterial meningitis		1		1	0.04
Aseptic meningitis	2		2		
Mycoplasma pneumonia		1	1	3	0.12
Chlamydial pneumonia (excluding psittacosis)	1				
Infectious gastroenteritis (only by Rotavirus)					
Influenza-Associated Hospitalizations	28	31	31	31	1.24
COVID-19-Associated Hospitalizations	145	97	62	48	1.92

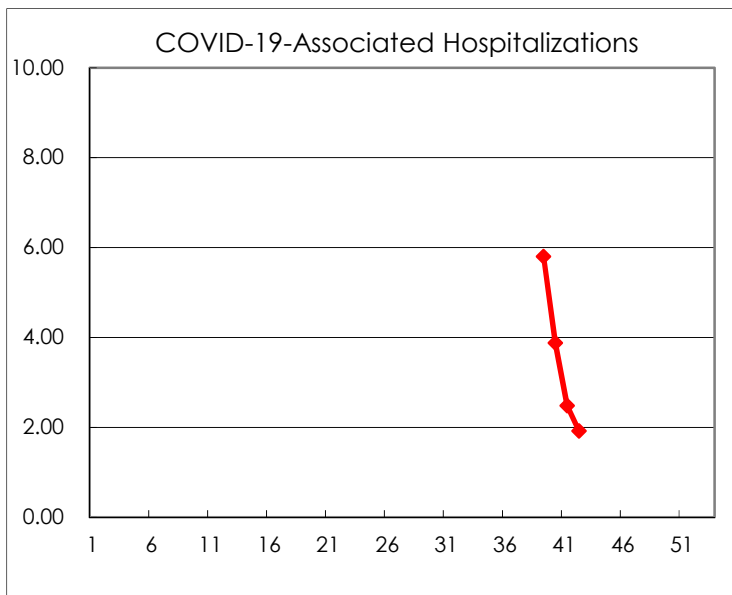
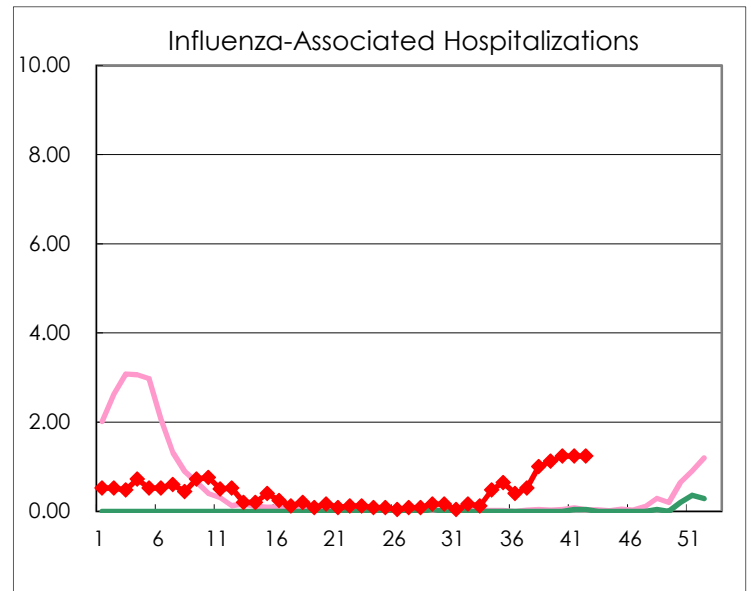
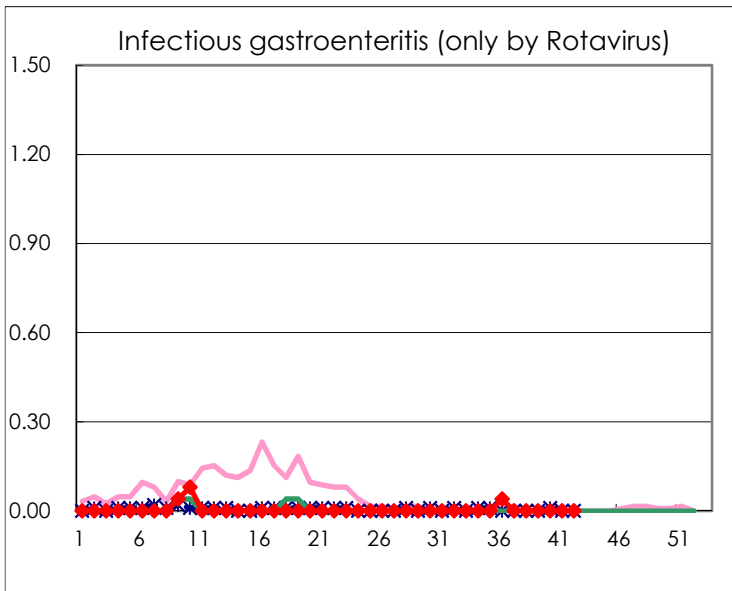
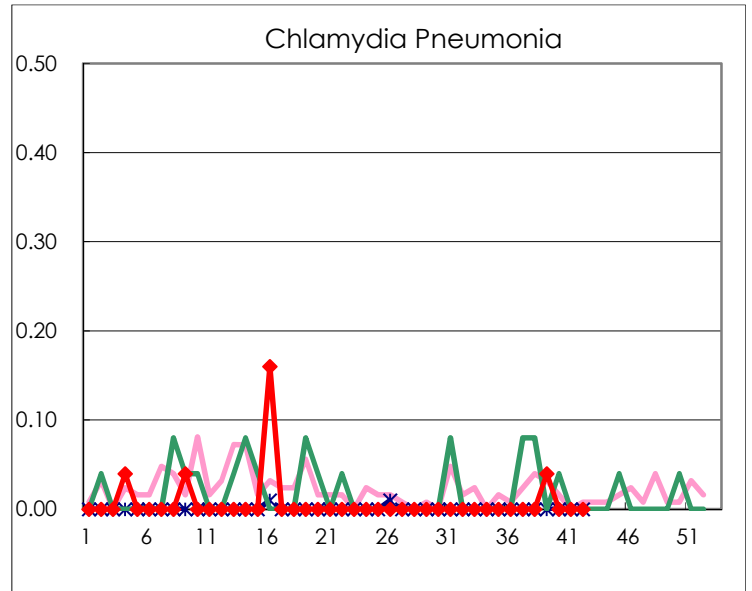
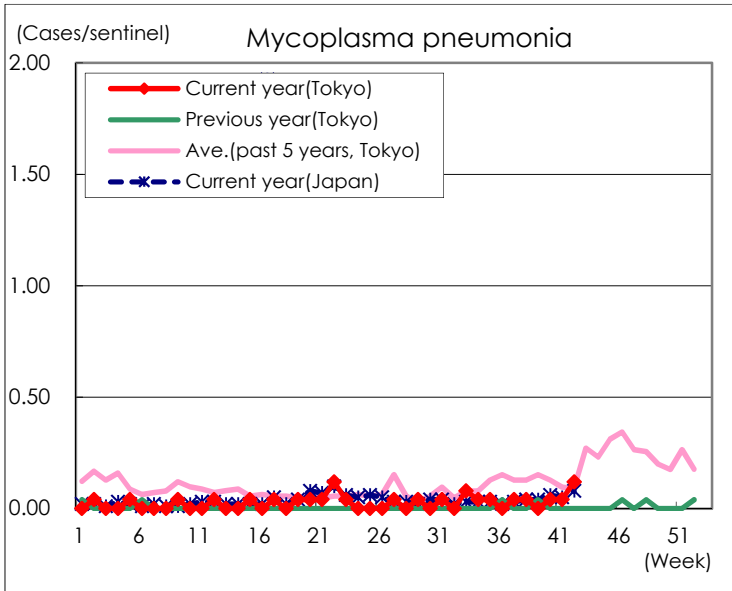
(Blank means 0.)

Disease Trend Graph (weekly reported cases per sentinel in comparison)









Number of sentinel facilities for weekly reporting		
Types of sentinels	Number of sentinels	Sentinels having reported
Pediatric	264	261
Influenza COVID-19	419	416
Ophthalmic	39	39
Specialty-designated	25	25