
INFECTIOUS DISEASES WEEKLY REPORT

TOKYO IDWR

Tokyo Metropolitan Infectious Disease Surveillance Center

2 November 2023 / Number 43 (10/23 ~ 10/29)

Surveillance System in Tokyo, Japan

The infectious diseases which all physicians must report
All physicians must report to health centers the incidence of the diseases which are shown at page one. Health centers electronically report the individual cases to Tokyo Metropolitan Infectious Disease Surveillance Center.

The infectious diseases required to be reported by the sentinels
The numbers of patients who visit the sentinel clinics or hospitals during a week are reported to health centers in Tokyo. And they electronically report the numbers to Tokyo Metropolitan Infectious Disease Surveillance Center. We have about 500 sentinel clinics and hospitals in Tokyo.

Tokyo Metropolitan Institute of Public Health

TEL:81-3-3363-3213 FAX:81-3-5332-7365

e-mail:tmiph@section.metro.tokyo.jp

URL:idsc.tmiph.metro.tokyo.lg.jp/

Number of patients with the diseases which all physicians must report

Category	Diseases	Tokyo					Japan		
		40th	41st	42nd	43rd	Cum 2023	43rd	Cum 2023	
I	Ebola hemorrhagic fever								
	Crimean-Congo hemorrhagic fever								
	Smallpox								
	South American hemorrhagic fever								
	Plague								
	Marburg disease								
	Lassa fever								
II	Acute poliomyelitis								
	Tuberculosis	56	34	45	38	1,655	234	11,816	
	Diphtheria								
	Severe Acute Respiratory Syndrome(SARS)								
	Middle East Respiratory Syndrome (MERS)								
	Avian influenza H5N1								
	Avian influenza H7N9								
III	Cholera					2		2	
	Shigellosis				1	8	3	35	
	Enterohemorrhagic Escherichia coli infection	16	17	15	10	380	101	3,230	
	Typhoid fever	1	1			8		34	
	Paratyphoid fever					3		8	
IV	Hepatitis E	3		5	1	140	4	457	
	West Nile fever								
	Hepatitis A	1			1	10	2	45	
	Echinococcosis							12	
	Mpox	2	1	1	3	157	5	209	
	Yellow fever								
	Psittacosis							8	
	Omsk hemorrhagic fever								
	Relapsing fever							21	
	Kyasanur forest disease								
	Q fever								
	Rabies								
	Coccidioidomycosis							2	
	Zika virus infection							1	
	Severe Fever with Thrombocytopenia Syndrome							2	127
	Hemorrhagic fever with renal syndrome								
	Western equine encephalitis								
	Tick-borne encephalitis								
	Anthrax								
	Chikungunya fever					1			6
	Scrub typhus(Tsutsugamushi disease)					5	7		127
	Dengue fever	1		1	2	39	4		130
	Eastern equine encephalitis								
	Avian influenza (excluding H5N1 and H7N9)								
	Nipah virus infection								
	Japanese spotted fever					1	23		452
	Japanese encephalitis								4
	Hantavirus pulmonary syndrome								
	Herpes B virus infection								
	Glanders								
	Brucellosis				1	1	1		2
	Venezuelan equine encephalitis								
	Hendra virus infection								
	Epidemic typhus								
Botulism									
Malaria		2				9	1	25	
Tularemia									
Lyme disease						1		29	
Lyssavirus infection(excluding rabies)									
Rift valley fever									
Melioidosis									
Legionellosis	6	1	1	6	142	40		1,915	
Leptospirosis						4	3	41	
Rocky mountain spotted fever									

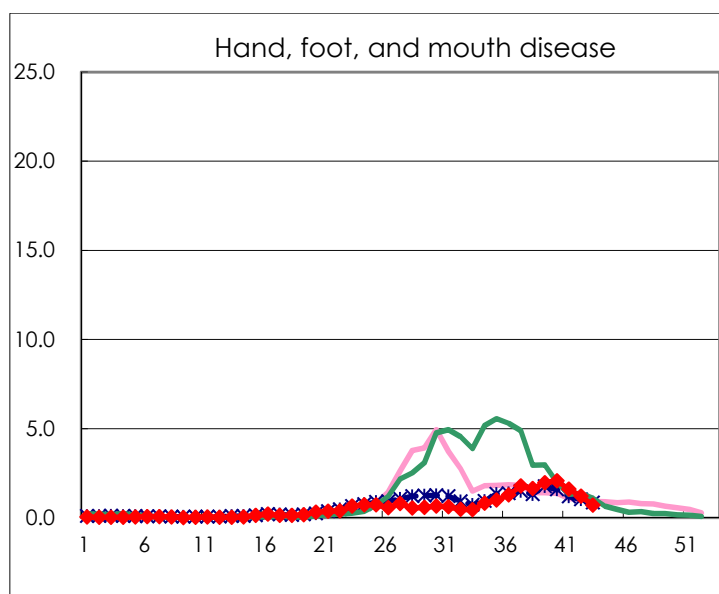
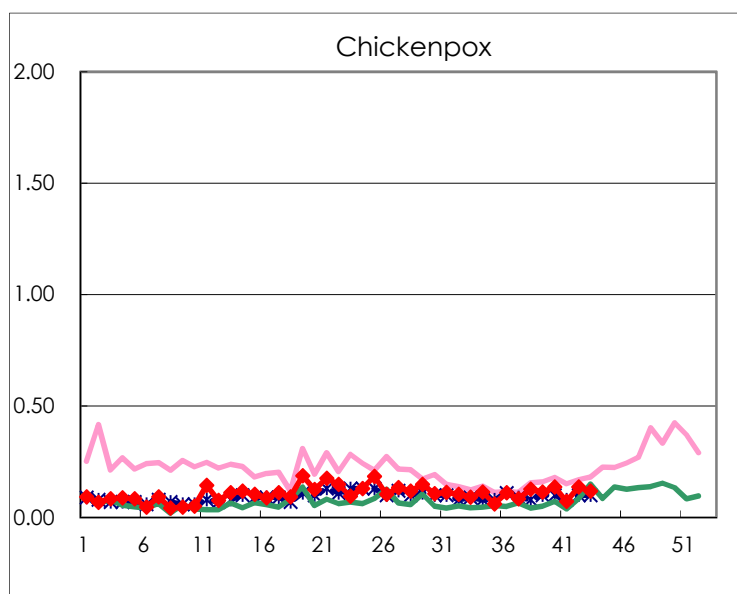
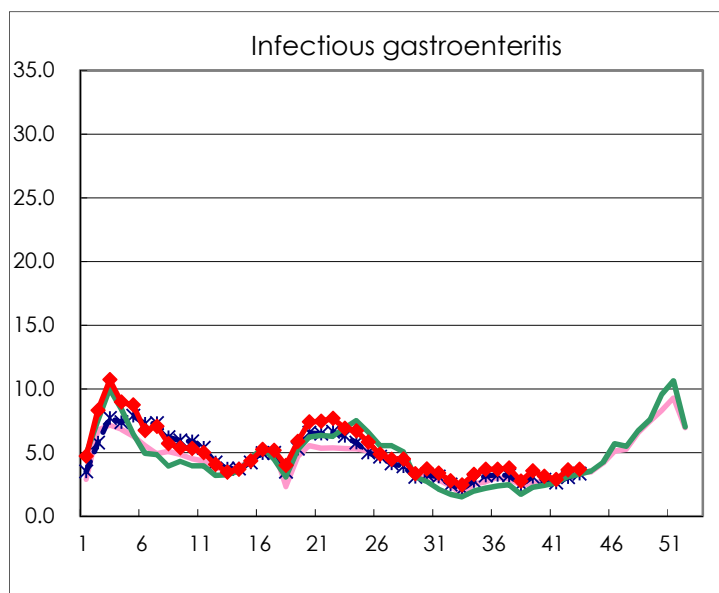
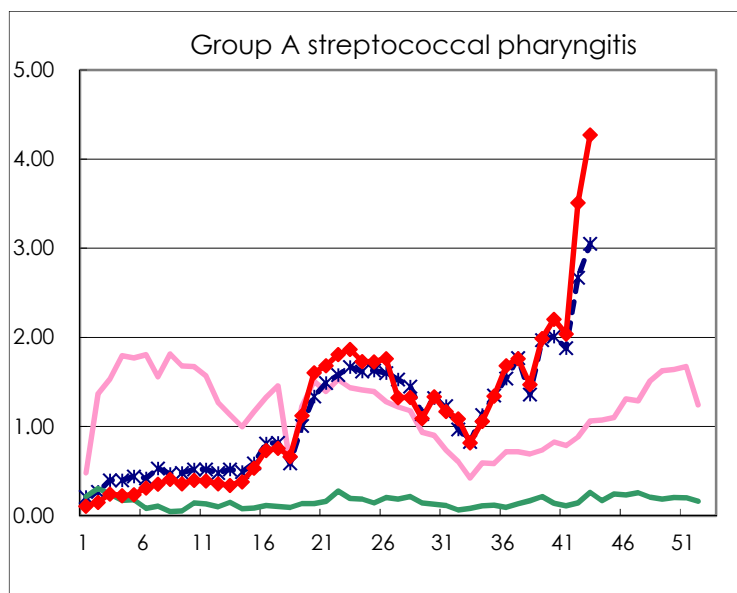
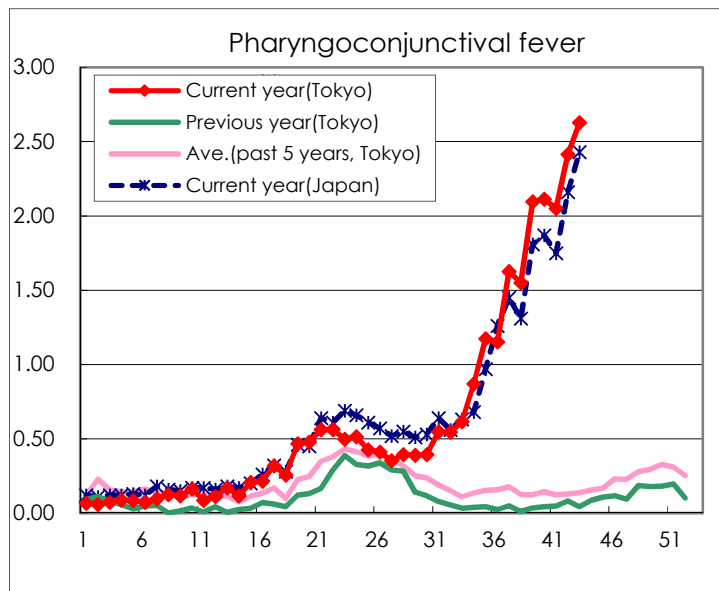
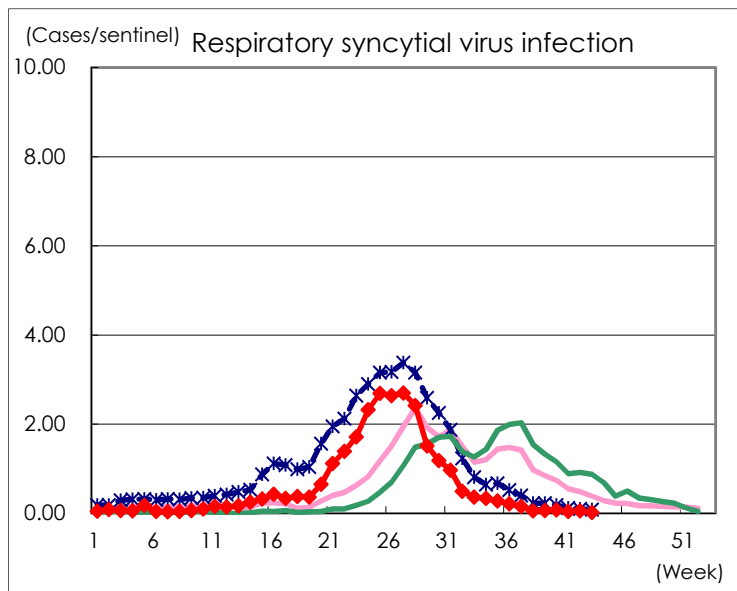
Category	Diseases	Tokyo					Japan	
		40th	41st	42nd	43rd	Cum 2023	43rd	Cum 2023
V	Amebiasis	5		1		78	4	408
	Viral hepatitis(excluding hepatitis A and E)				1	39	5	203
	CRE infection	6	2	4	5	179	45	1,698
	Acute Flaccid Paralysis (excluding Acute poliomyelitis)					6	1	50
	Acute encephalitis(excluding JE and WNE)	1	3	1	2	34	10	481
	Cryptosporidiosis					1		10
	Creutzfeldt-Jakob disease					16		128
	Severe invasive streptococcal infections(TSLS)	5	2	3	5	103	19	699
	Acquired immunodeficiency syndrome (AIDS)	5	3	9	9	253	9	771
	Giardiasis		1			10		35
	Invasive <i>Haemophilus influenzae</i> disease		3			41	10	461
	Invasive meningococcal disease					2	1	14
	Invasive pneumococcal disease	2	2	3	6	160	37	1,440
	Varicella (limited to hospitalized case)	2	1	1		52	5	309
	Congenital rubella syndrome							
	Syphilis	86	81	73	65	3,085	188	12,434
	Disseminated cryptococcosis					14	2	141
	Tetanus			1		6	1	89
	Vancomycin-resistant <i>S. aureus</i> infection							
	Vancomycin-resistant <i>Enterococcus</i> infection					9	1	100
	Pertussis	1	2	2	3	102	15	806
Rubella					4		11	
Measles					7		25	
MDRA infection	1		1		3		13	

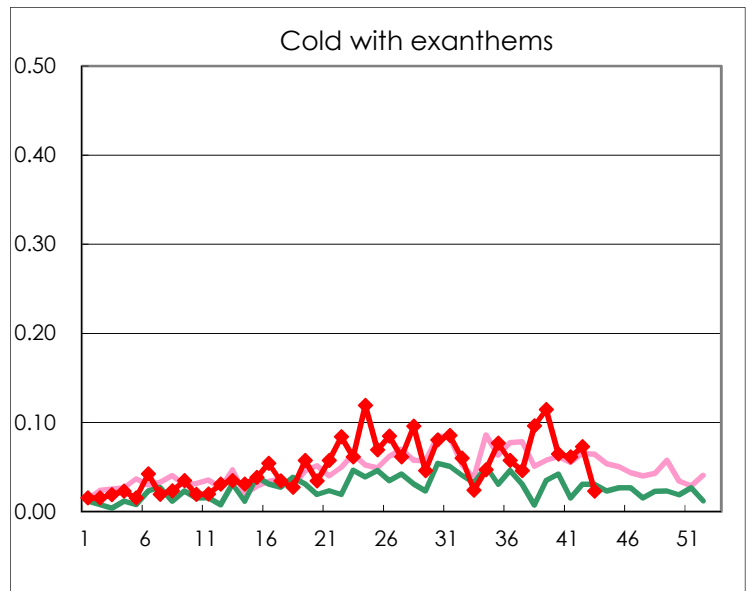
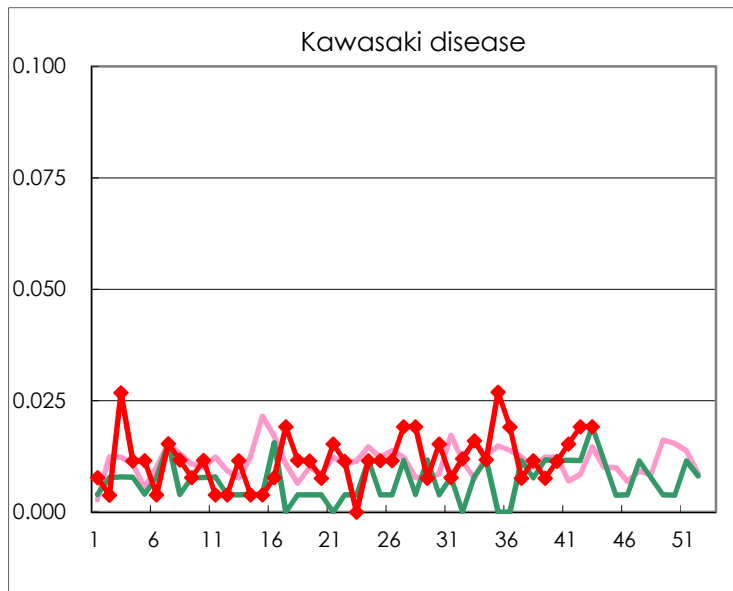
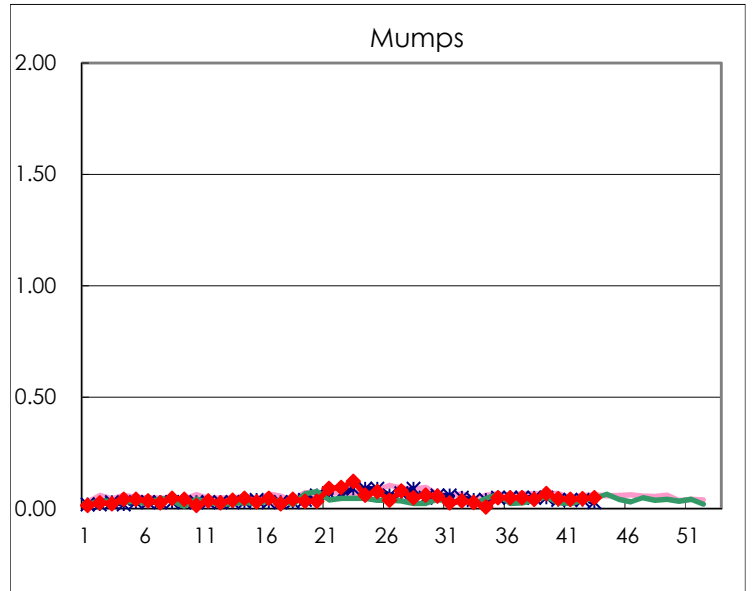
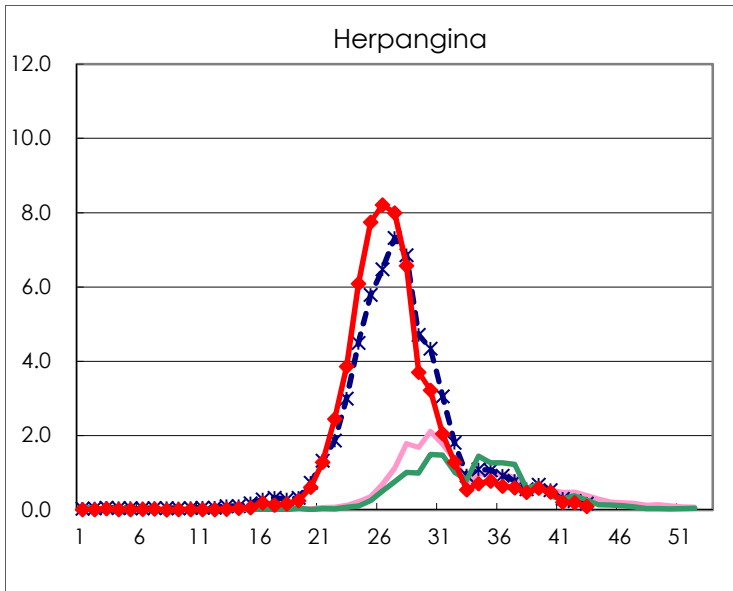
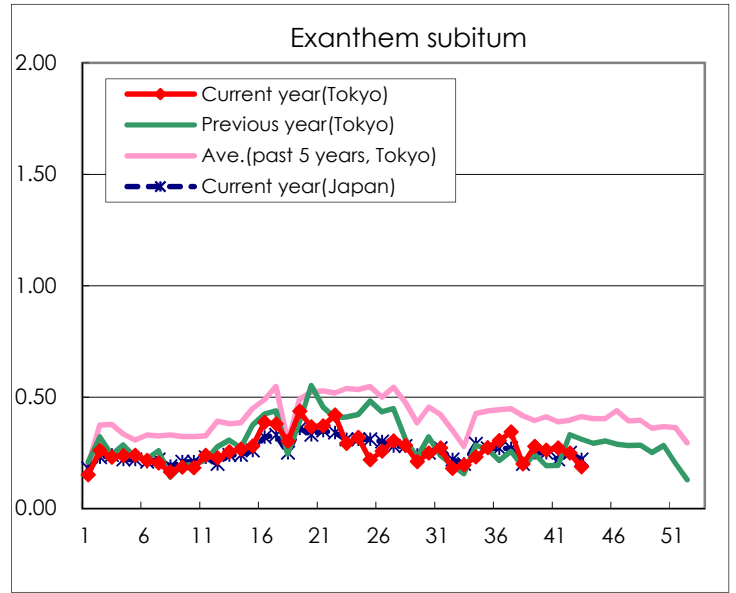
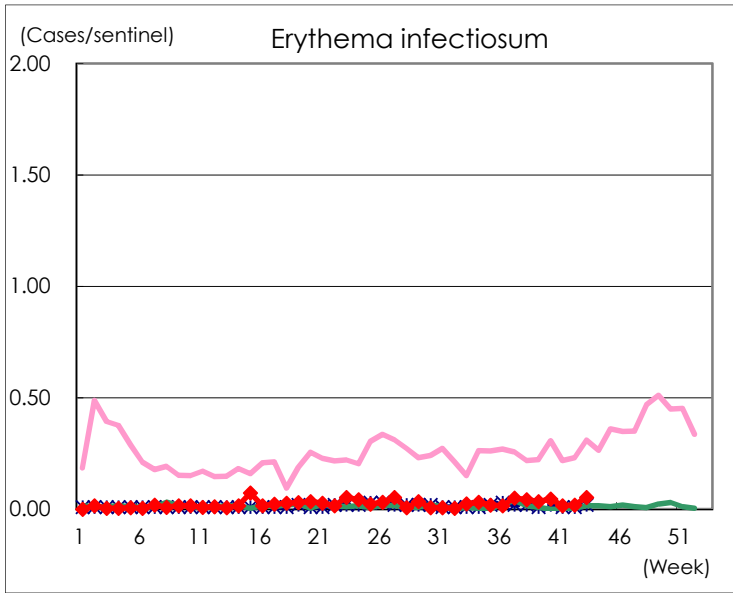
Number of patients with the diseases to be reported
by the designated clinics and hospitals

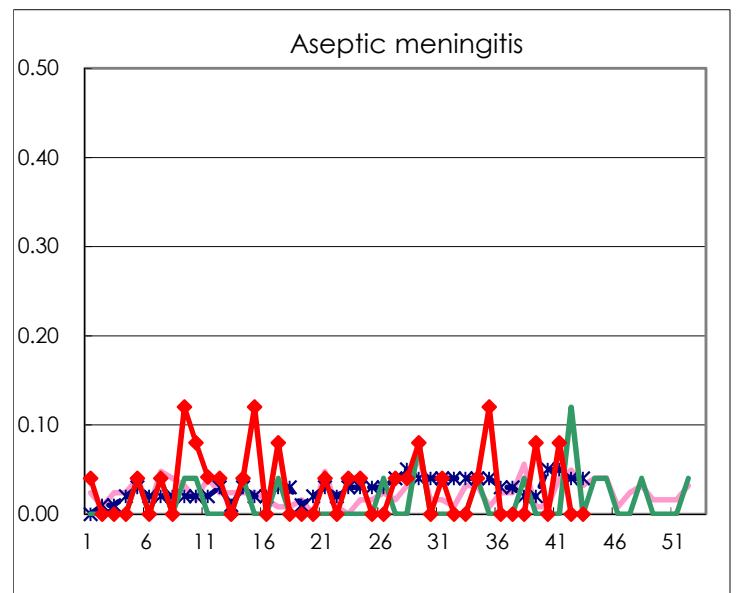
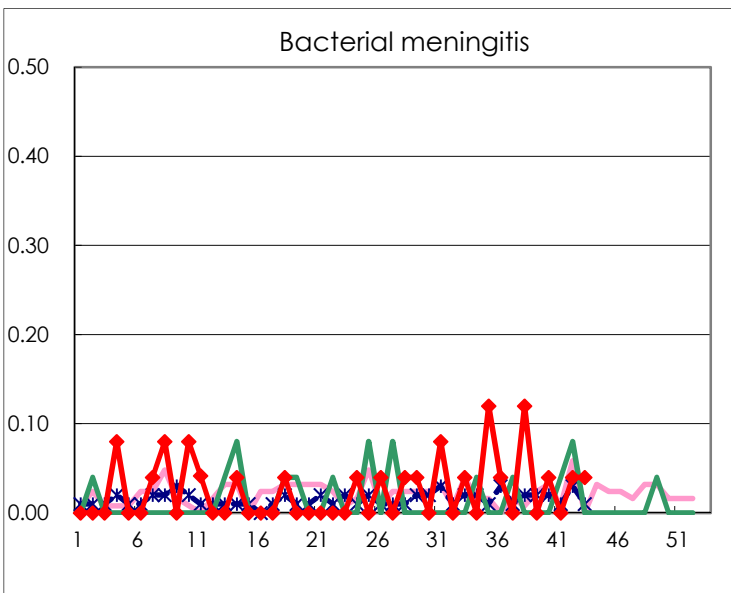
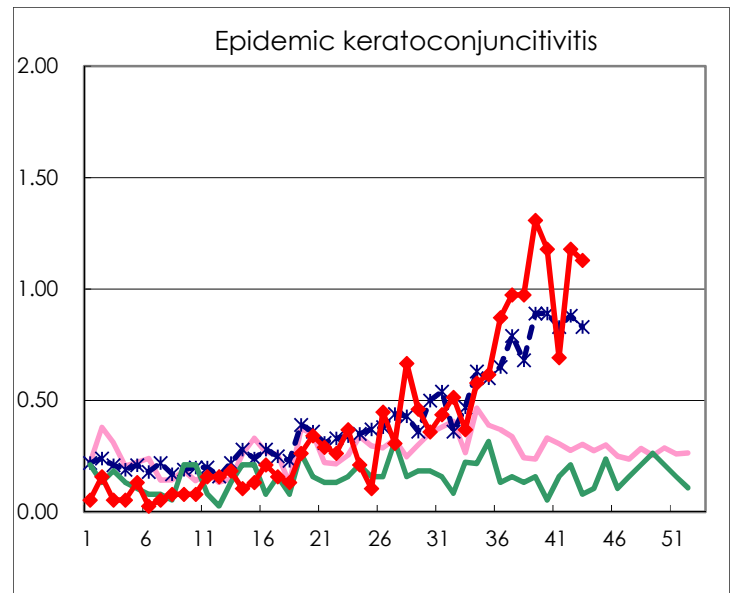
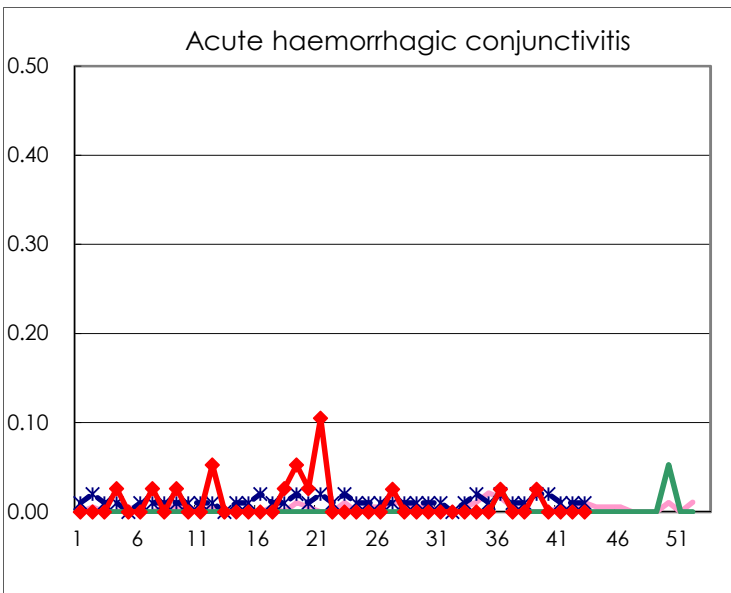
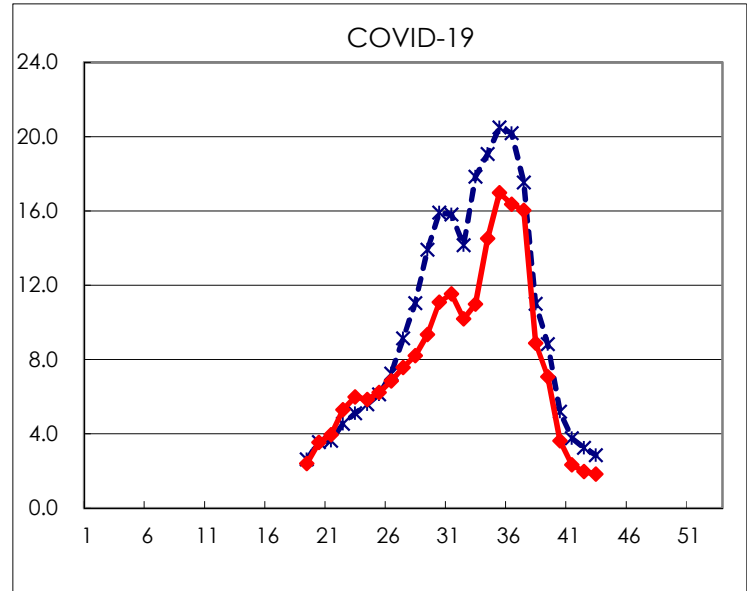
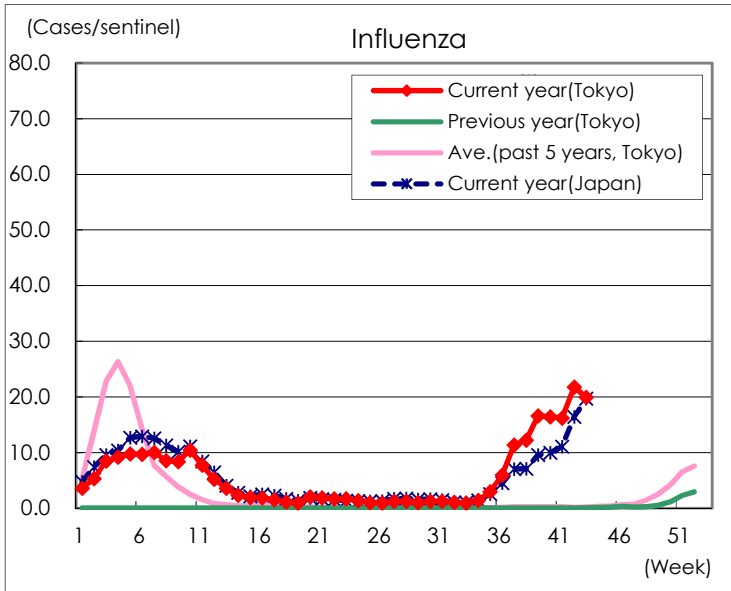
Diseases	Tokyo				
	40th	41st	42nd	43rd	/sentinel
Respiratory syncytial virus infection	20	11	15	4	0.02
Pharyngoconjunctival fever	556	535	630	686	2.63
Group A streptococcal pharyngitis	580	532	916	1,115	4.27
Infectious gastroenteritis	822	749	949	962	3.69
Chickenpox	36	19	36	31	0.12
Hand, foot, and mouth disease	546	417	317	184	0.70
Erythema infectiosum	12	4	5	14	0.05
Exanthem subitum	69	71	65	49	0.19
Herpangina	126	54	51	25	0.10
Mumps	12	11	12	13	0.05
Kawasaki disease	3	4	5	5	0.02
Cold with exanthems	17	16	19	6	0.02
Influenza	6,873	6,733	9,058	8,282	19.91
COVID-19	1,514	971	819	764	1.84
Acute hemorrhagic conjunctivitis					
Epidemic keratoconjunctivitis	46	27	46	44	1.13
Bacterial meningitis	1		1	1	0.04
Aseptic meningitis		2			
Mycoplasma pneumonia	1	1	3	2	0.08
Chlamydial pneumonia (excluding psittacosis)					
Infectious gastroenteritis (only by Rotavirus)					
Influenza-Associated Hospitalizations	31	31	31	24	0.96
COVID-19-Associated Hospitalizations	97	62	48	48	1.92

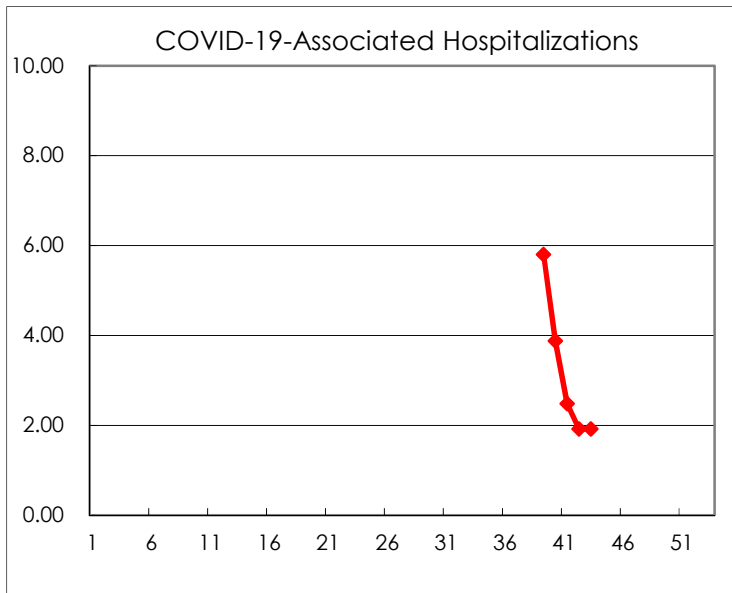
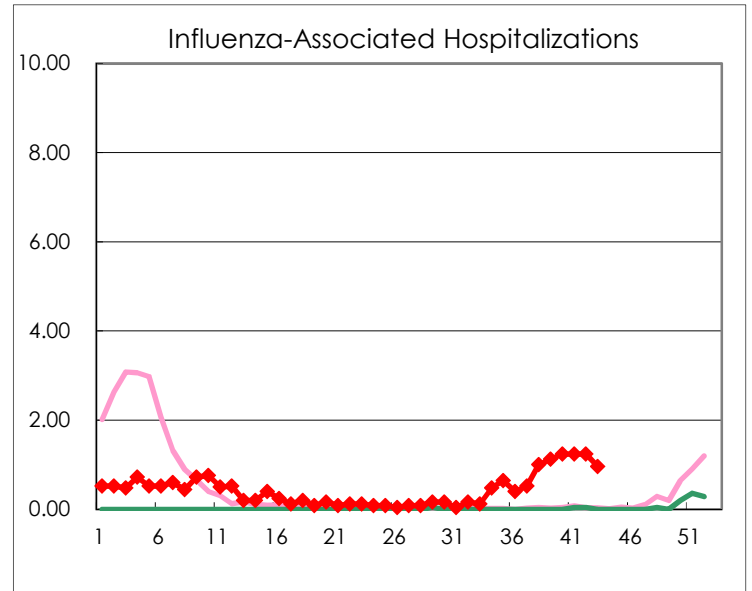
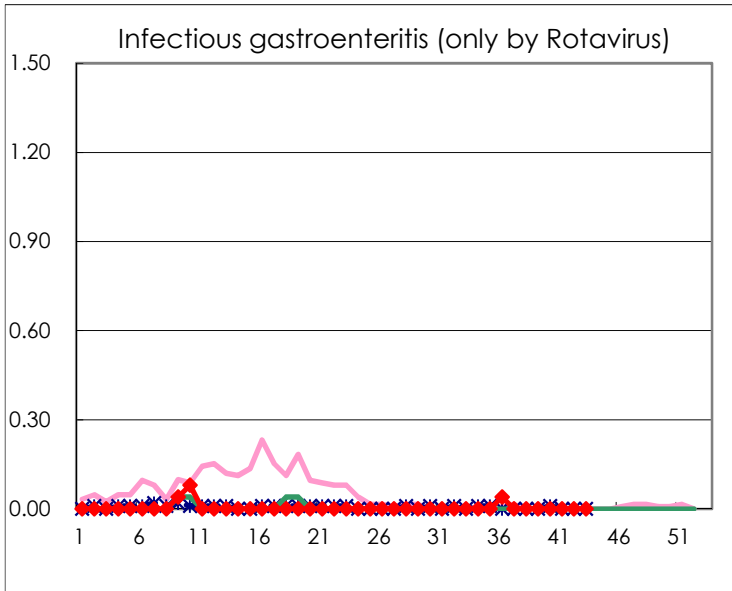
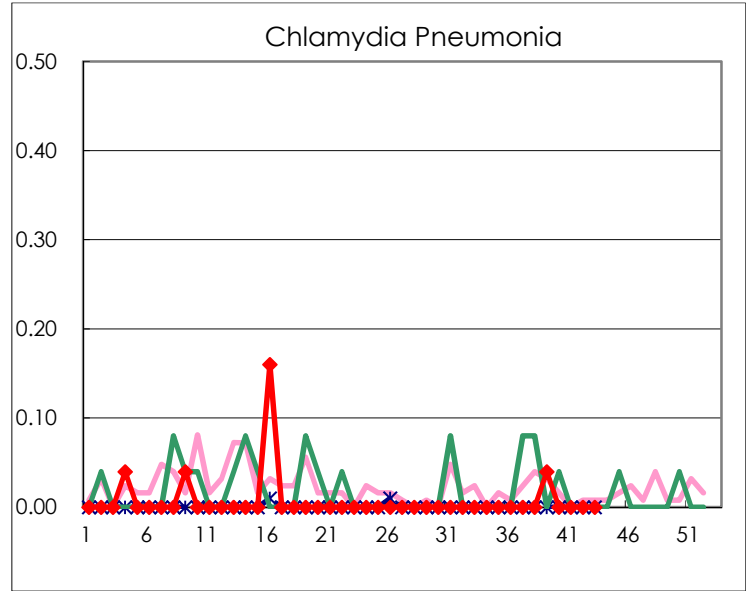
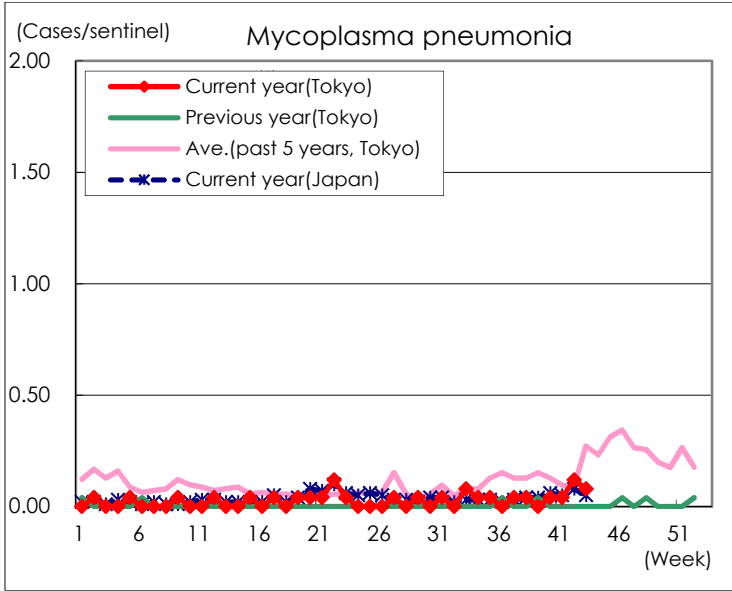
(Blank means 0.)

Disease Trend Graph (weekly reported cases per sentinel in comparison)









Number of sentinel facilities for weekly reporting		
Types of sentinels	Number of sentinels	Sentinels having reported
Pediatric	264	261
Influenza COVID-19	419	416
Ophthalmic	39	39
Specialty-designated	25	25