

---

INFECTIOUS DISEASES WEEKLY REPORT

# TOKYO IDWR

Tokyo Metropolitan Infectious Disease Surveillance Center

## 16 November 2023 / Number 45 ( 11/6 ~ 11/12 )

### Surveillance System in Tokyo, Japan

The infectious diseases which all physicians must report  
All physicians must report to health centers the incidence of the diseases which are shown at page one. Health centers electronically report the individual cases to Tokyo Metropolitan Infectious Disease Surveillance Center.

The infectious diseases required to be reported by the sentinels  
The numbers of patients who visit the sentinel clinics or hospitals during a week are reported to health centers in Tokyo. And they electronically report the numbers to Tokyo Metropolitan Infectious Disease Surveillance Center. We have about 500 sentinel clinics and hospitals in Tokyo.

Tokyo Metropolitan Institute of Public Health

TEL:81-3-3363-3213 FAX:81-3-5332-7365

e-mail:tmiph@section.metro.tokyo.jp

URL:idsc.tmiph.metro.tokyo.lg.jp/

---

Number of patients with the diseases which all physicians must report

Category	Diseases	Tokyo					Japan	
		42nd	43rd	44th	45th	Cum 2023	45th	Cum 2023
I	Ebola hemorrhagic fever							
	Crimean-Congo hemorrhagic fever							
	Smallpox							
	South American hemorrhagic fever							
	Plague							
	Marburg disease							
	Lassa fever							
II	Acute poliomyelitis							
	Tuberculosis	45	40	38	38	1,733	233	12,372
	Diphtheria							
	Severe Acute Respiratory Syndrome(SARS)							
	Middle East Respiratory Syndrome (MERS)							
	Avian influenza H5N1							
	Avian influenza H7N9							
III	Cholera					2		2
	Shigellosis		1			8		35
	Enterohemorrhagic Escherichia coli infection	15	10	4	5	389	52	3,405
	Typhoid fever					8		35
	Paratyphoid fever					3		8
IV	Hepatitis E	5	1	2	1	143	4	464
	West Nile fever							
	Hepatitis A		1	2		12	2	49
	Echinococcosis							12
	Mpox	1	3		2	159	4	213
	Yellow fever							
	Psittacosis							8
	Omsk hemorrhagic fever							
	Relapsing fever							21
	Kyasanur forest disease							
	Q fever							
	Rabies							
	Coccidioidomycosis						1	3
	Zika virus infection							1
	Severe Fever with Thrombocytopenia Syndrome							128
	Hemorrhagic fever with renal syndrome							
	Western equine encephalitis							
	Tick-borne encephalitis							
	Anthrax							
	Chikungunya fever					1		7
	Scrub typhus(Tsutsugamushi disease)					5	33	170
	Dengue fever	1	2	2	1	42	6	144
	Eastern equine encephalitis							
	Avian influenza (excluding H5N1 and H7N9)							
	Nipah virus infection							
	Japanese spotted fever					1	7	482
	Japanese encephalitis						1	5
	Hantavirus pulmonary syndrome							
	Herpes B virus infection							
	Glanders							
	Brucellosis		1			1		2
	Venezuelan equine encephalitis							
	Hendra virus infection							
Epidemic typhus								
Botulism								
Malaria				1	10	1	28	
Tularemia								
Lyme disease					1		29	
Lyssavirus infection(excluding rabies)								
Rift valley fever								
Melioidosis								
Legionellosis	1	6	2	1	145	40	1,989	
Leptospirosis				1	5	2	47	
Rocky mountain spotted fever								

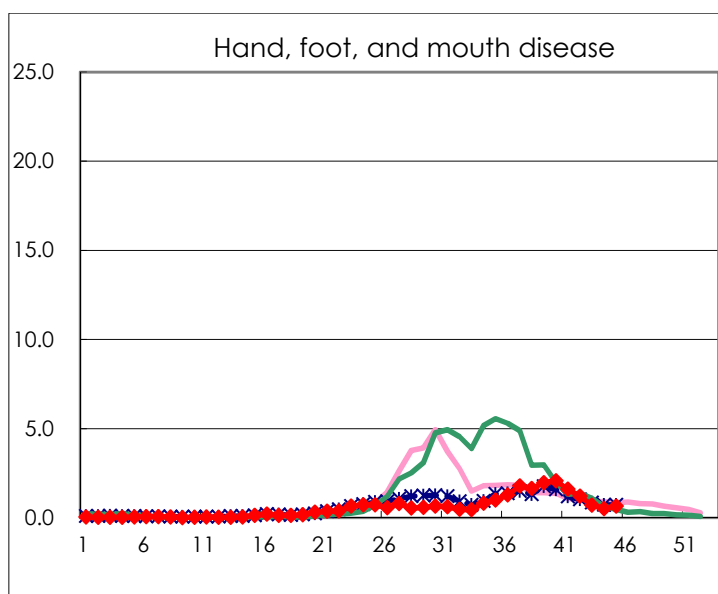
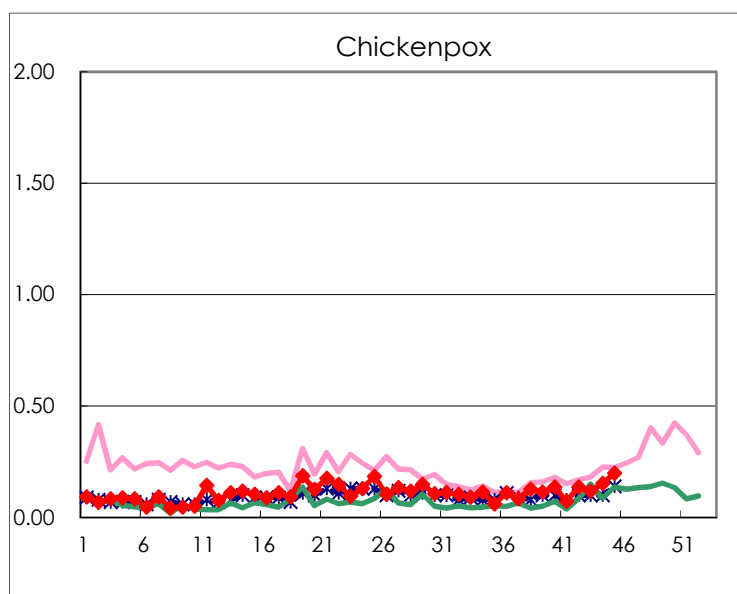
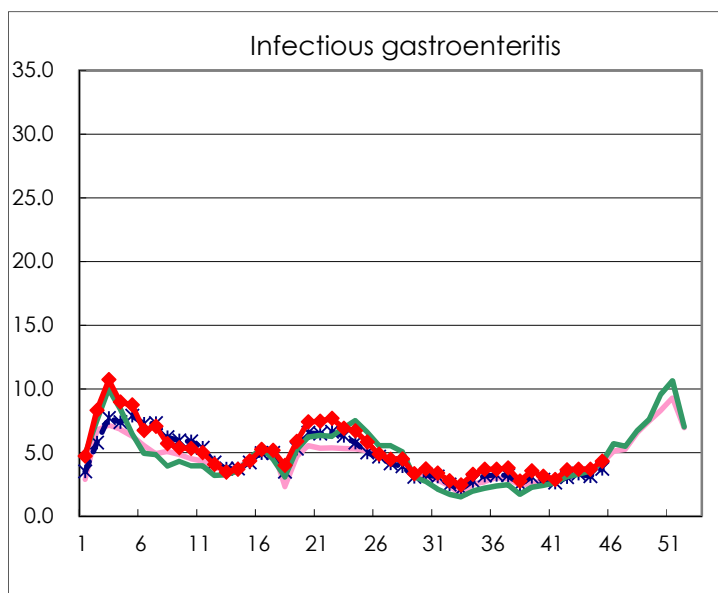
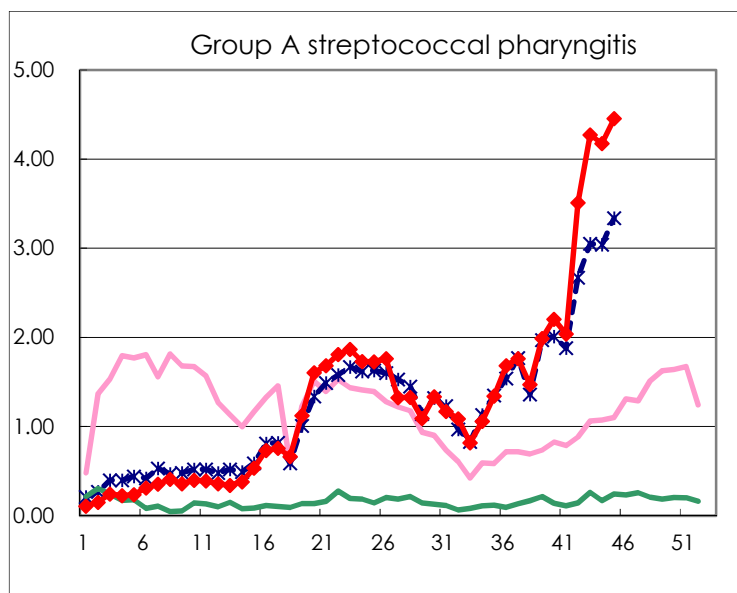
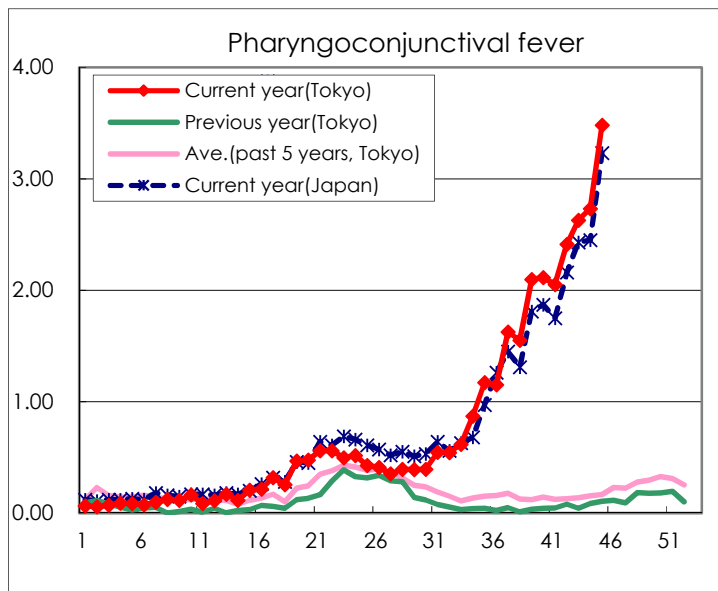
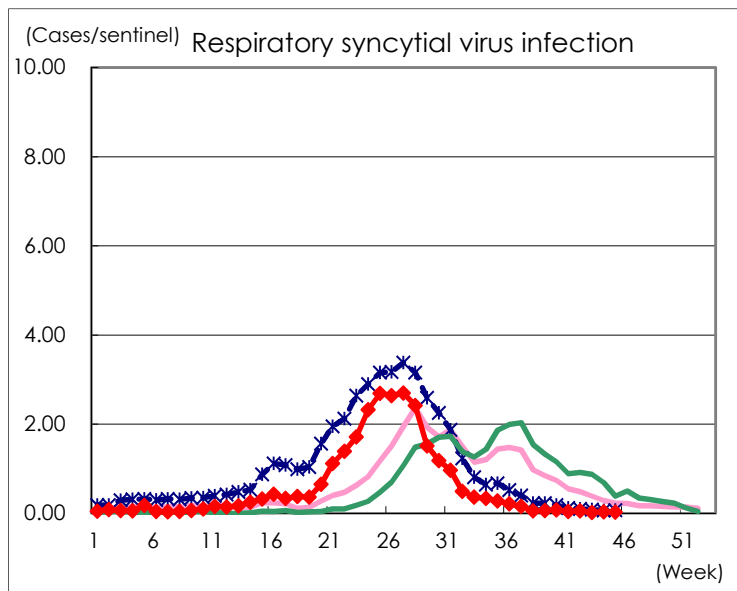
Category	Diseases	Tokyo					Japan	
		42nd	43rd	44th	45th	Cum 2023	45th	Cum 2023
V	Amebiasis	1		1	1	80	3	422
	Viral hepatitis(excluding hepatitis A and E)		1		2	41	4	212
	CRE infection	4	6	7	7	194	32	1,793
	Acute Flaccid Paralysis (excluding Acute poliomyelitis)					6	1	51
	Acute encephalitis(excluding JE and WNE)	1	3		1	36	8	516
	Cryptosporidiosis					1		11
	Creutzfeldt-Jakob disease				1	17	3	137
	Severe invasive streptococcal infections(TSLS)	3	5		2	105	17	731
	Acquired immunodeficiency syndrome (AIDS)	9	9	4	4	261	15	806
	Giardiasis					10		35
	Invasive <i>Haemophilus influenzae</i> disease			1	1	43	6	475
	Invasive meningococcal disease					2		15
	Invasive pneumococcal disease	3	6	5	8	173	38	1,531
	Varicella (limited to hospitalized case)	1				52	4	323
	Congenital rubella syndrome							
	Syphilis	73	68	50	71	3,209	201	12,965
	Disseminated cryptococcosis				2	16		150
	Tetanus	1				6	4	96
	Vancomycin-resistant <i>S. aureus</i> infection							
	Vancomycin-resistant <i>Enterococcus</i> infection					9	3	109
	Pertussis	2	3	4		106	22	854
Rubella					4		11	
Measles					7		25	
MDRA infection	1				3		13	

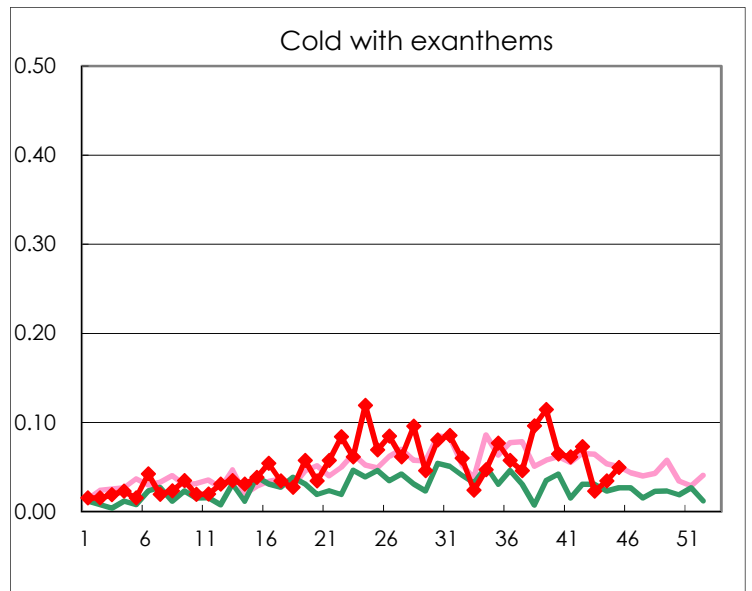
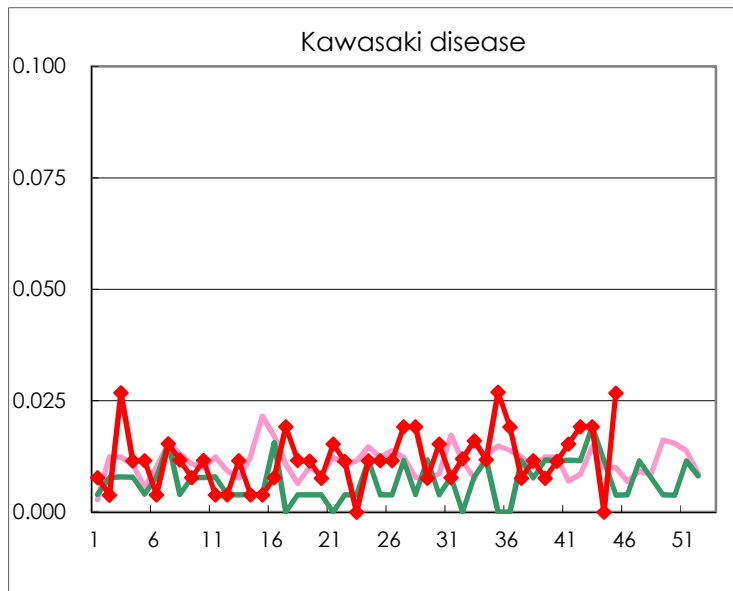
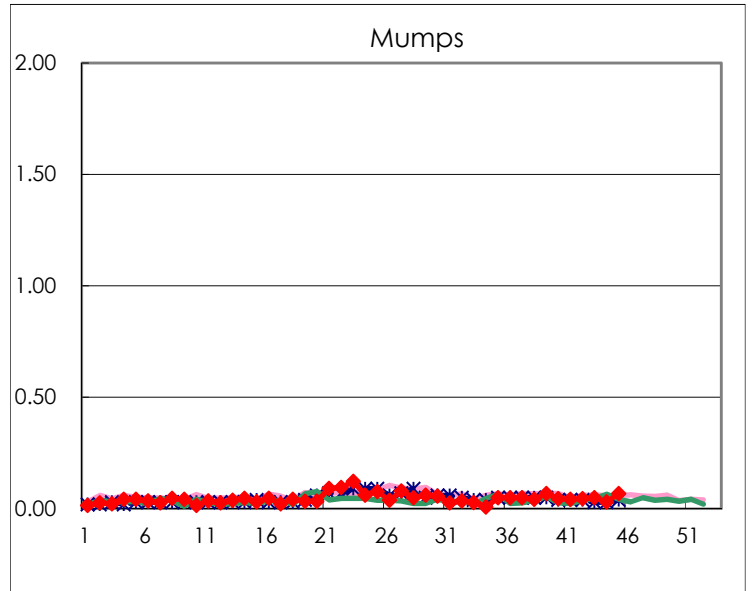
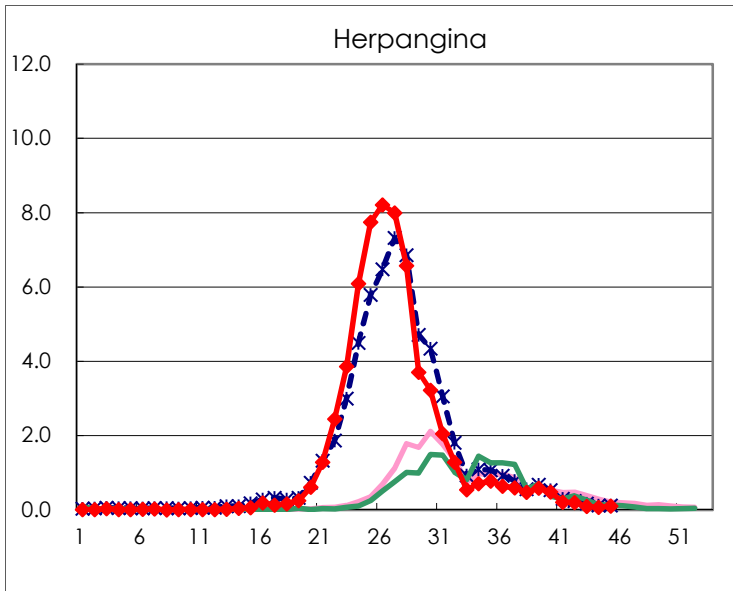
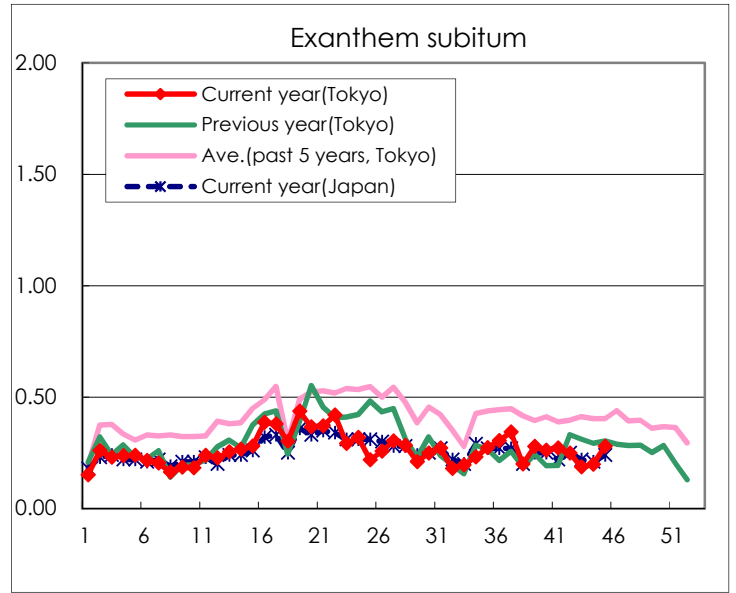
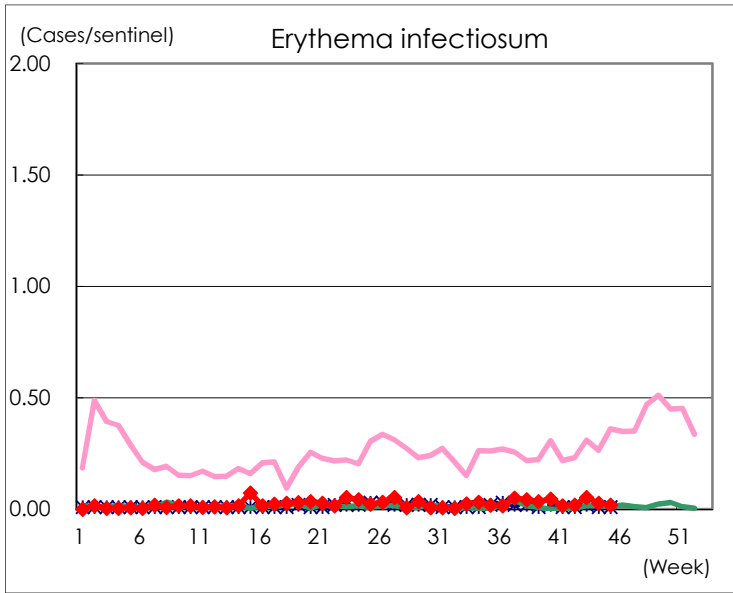
Number of patients with the diseases to be reported  
by the designated clinics and hospitals

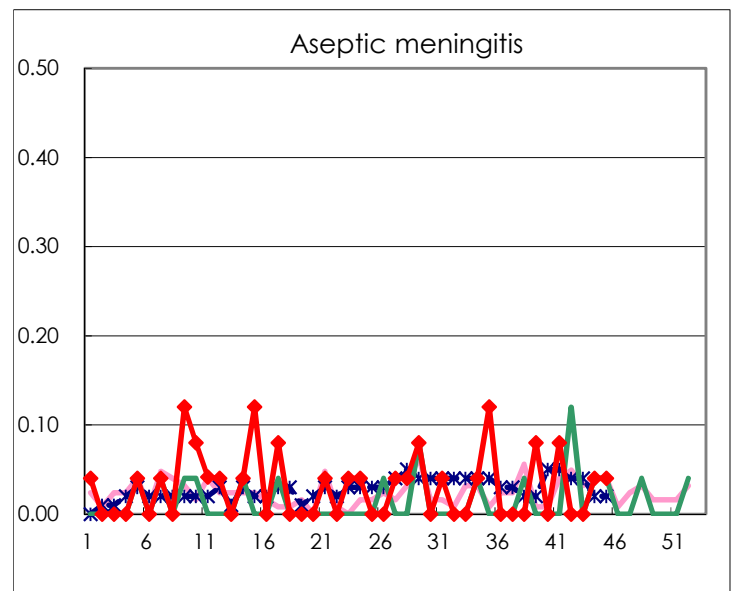
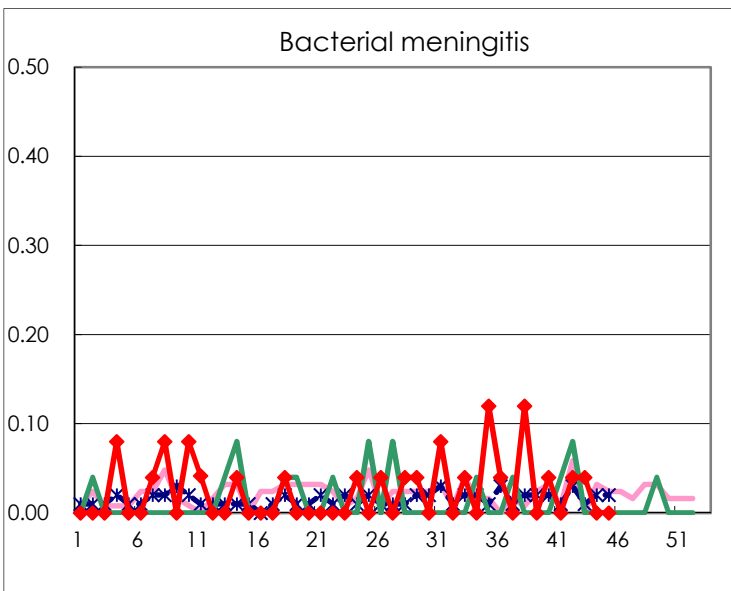
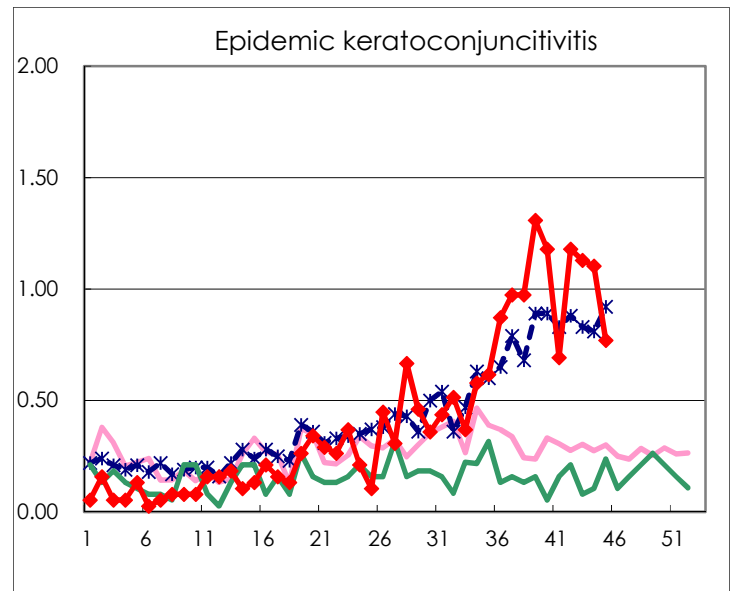
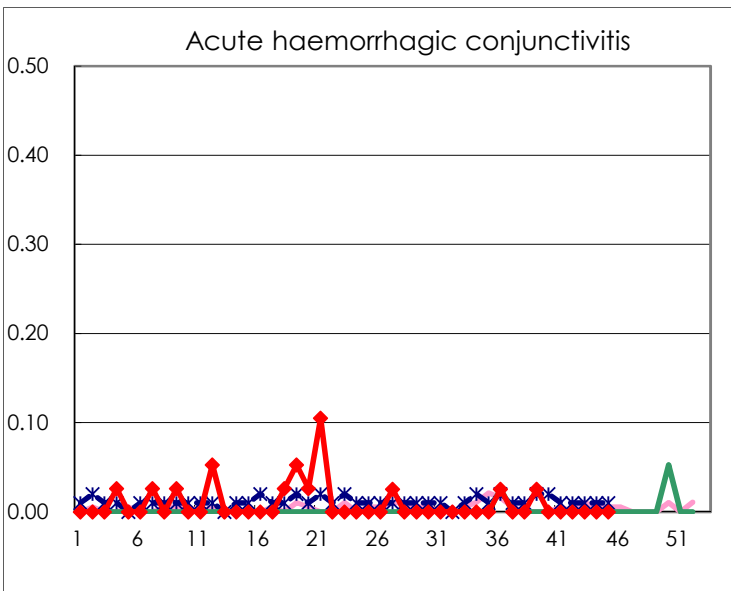
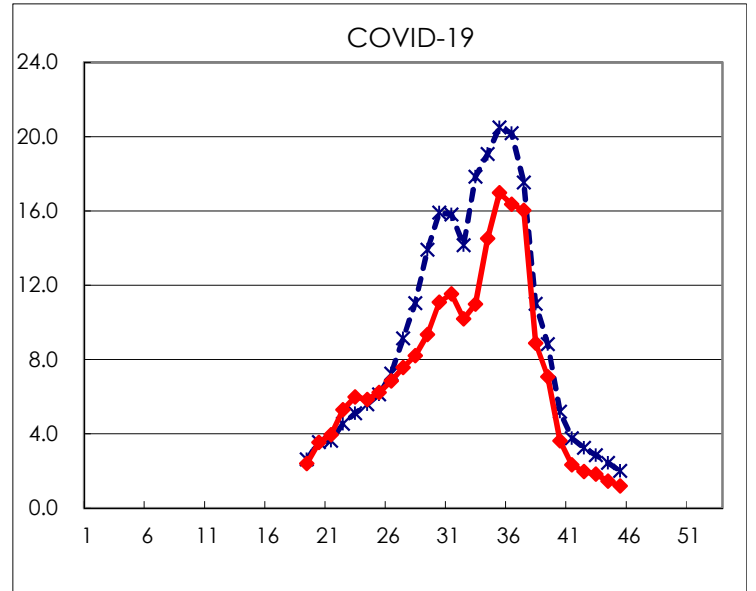
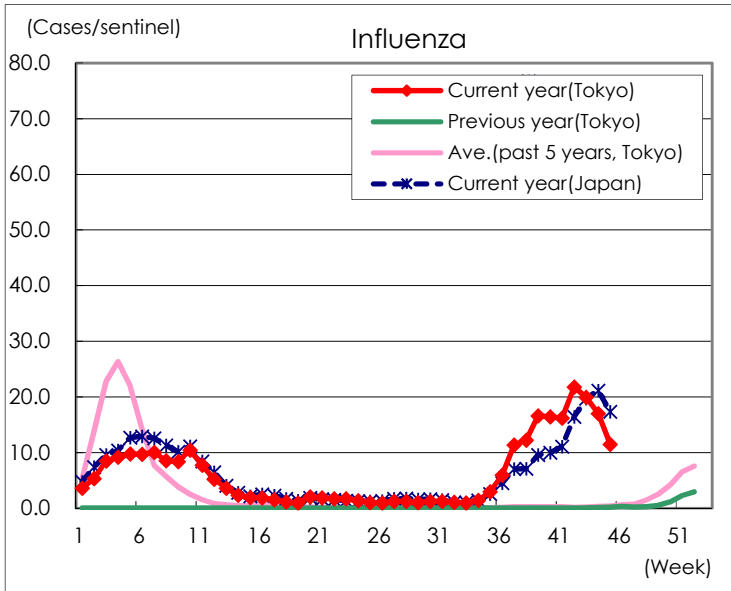
Diseases	Tokyo				
	42nd	43rd	44th	45th	/sentinel
Respiratory syncytial virus infection	15	4	9	6	0.02
Pharyngoconjunctival fever	630	686	716	912	3.48
Group A streptococcal pharyngitis	916	1,115	1,094	1,167	4.45
Infectious gastroenteritis	949	962	967	1,132	4.32
Chickenpox	36	31	40	52	0.20
Hand, foot, and mouth disease	317	184	133	171	0.65
Erythema infectiosum	5	14	7	5	0.02
Exanthem subitum	65	49	52	73	0.28
Herpangina	51	25	17	27	0.10
Mumps	12	13	8	18	0.07
Kawasaki disease	5	5		7	0.03
Cold with exanthems	19	6	9	13	0.05
Influenza	9,058	8,282	7,086	4,779	11.46
COVID-19	819	764	607	501	1.20
Acute hemorrhagic conjunctivitis					
Epidemic keratoconjunctivitis	46	44	43	30	0.77
Bacterial meningitis	1	1			
Aseptic meningitis			1	1	0.04
Mycoplasma pneumonia	3	2	1	5	0.20
Chlamydial pneumonia (excluding psittacosis)			1		
Infectious gastroenteritis (only by Rotavirus)					
Influenza-Associated Hospitalizations	31	24	36	31	1.24
COVID-19-Associated Hospitalizations	48	49	80	48	1.92

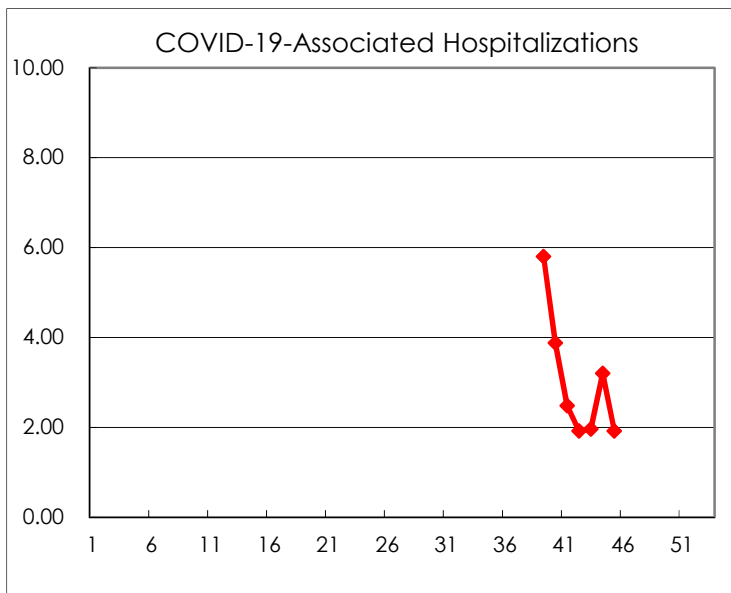
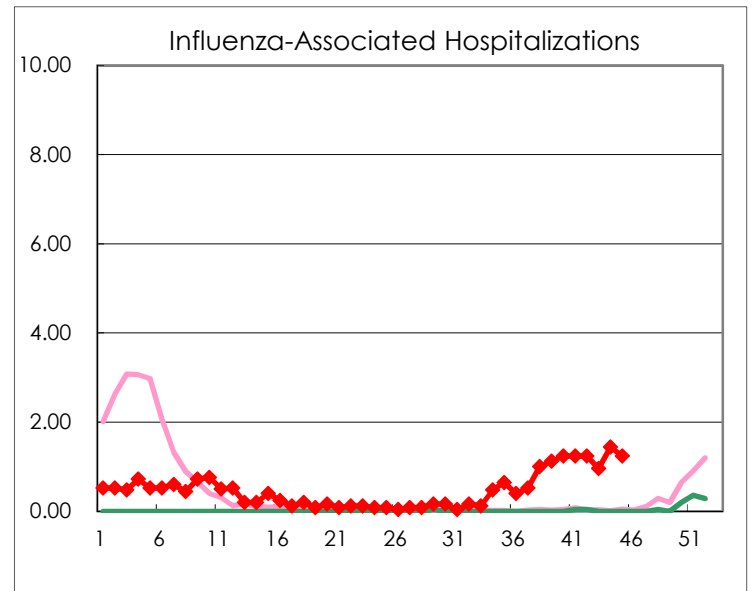
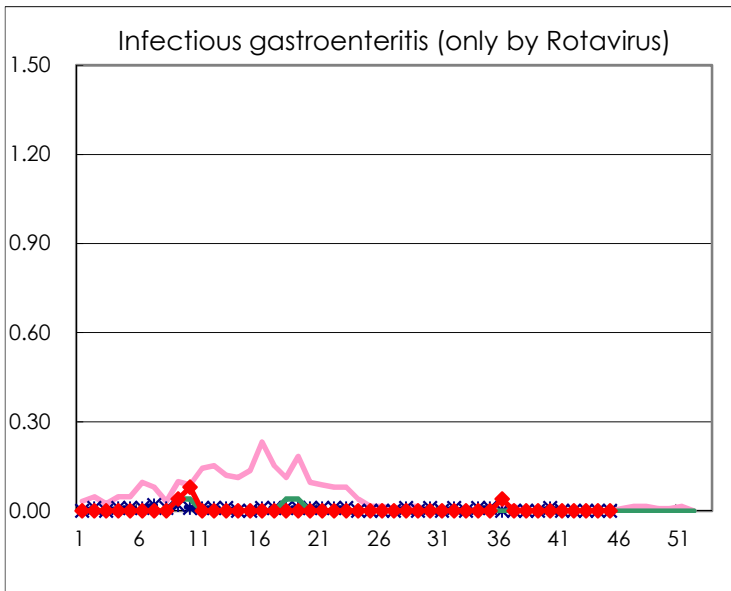
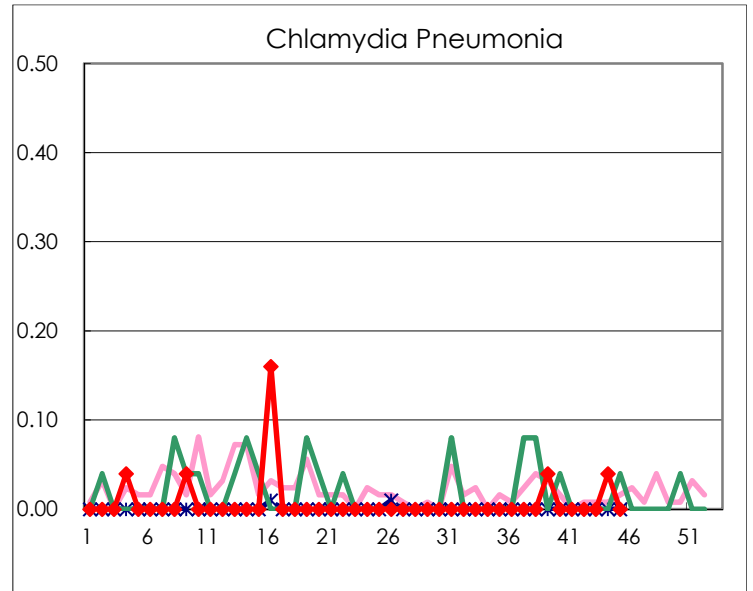
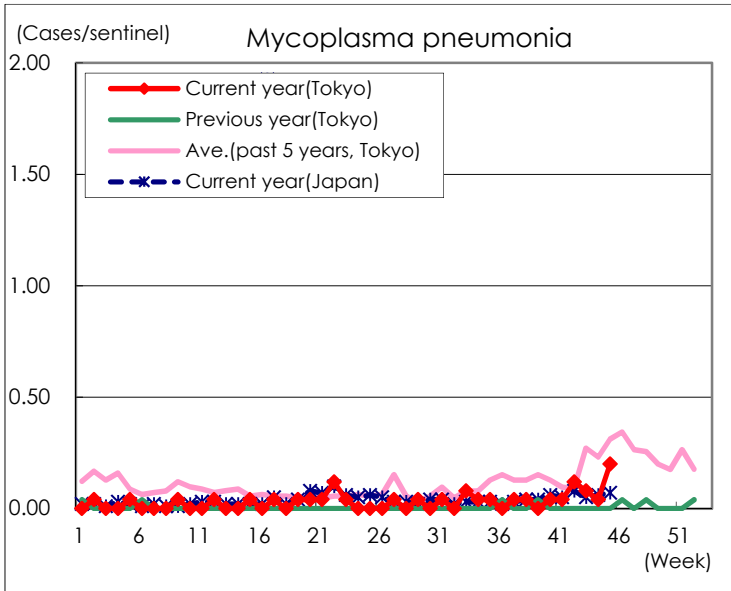
( Blank means 0. )

# Disease Trend Graph (weekly reported cases per sentinel in comparison)









Number of sentinel facilities for weekly reporting		
Types of sentinels	Number of sentinels	Sentinels having reported
Pediatric	264	262
Influenza COVID-19	419	417
Ophthalmic	39	39
Specialty-designated	25	25