

---

INFECTIOUS DISEASES WEEKLY REPORT

# TOKYO IDWR

Tokyo Metropolitan Infectious Disease Surveillance Center

## 24 November 2023 / Number 46 ( 11/13 ~ 11/19 )

### Surveillance System in Tokyo, Japan

The infectious diseases which all physicians must report  
All physicians must report to health centers the incidence of the diseases which are shown at page one. Health centers electronically report the individual cases to Tokyo Metropolitan Infectious Disease Surveillance Center.

The infectious diseases required to be reported by the sentinels  
The numbers of patients who visit the sentinel clinics or hospitals during a week are reported to health centers in Tokyo. And they electronically report the numbers to Tokyo Metropolitan Infectious Disease Surveillance Center. We have about 500 sentinel clinics and hospitals in Tokyo.

Tokyo Metropolitan Institute of Public Health

TEL:81-3-3363-3213 FAX:81-3-5332-7365

e-mail:tmiph@section.metro.tokyo.jp

URL:idsc.tmiph.metro.tokyo.lg.jp/

---

Number of patients with the diseases which all physicians must report

Category	Diseases	Tokyo					Japan	
		43rd	44th	45th	46th	Cum 2023	46th	Cum 2023
I	Ebola hemorrhagic fever							
	Crimean-Congo hemorrhagic fever							
	Smallpox							
	South American hemorrhagic fever							
	Plague							
	Marburg disease							
	Lassa fever							
II	Acute poliomyelitis							
	Tuberculosis	42	39	40	34	1,773	239	12,663
	Diphtheria							
	Severe Acute Respiratory Syndrome(SARS)							
	Middle East Respiratory Syndrome (MERS)							
	Avian influenza H5N1							
III	Avian influenza H7N9							
	Cholera					2		2
	Shigellosis	1			1	9	1	37
	Enterohemorrhagic Escherichia coli infection	10	5	6	7	398	87	3,495
	Typhoid fever					8		35
IV	Paratyphoid fever					3		8
	Hepatitis E	1	2	1	2	145	10	475
	West Nile fever							
	Hepatitis A	1	2			12	1	50
	Echinococcosis						1	13
	Mpox	3		2	1	160	1	215
	Yellow fever							
	Psittacosis							8
	Omsk hemorrhagic fever							
	Relapsing fever							21
	Kyasanur forest disease							
	Q fever							
	Rabies							
	Coccidioidomycosis							3
	Zika virus infection							1
	Severe Fever with Thrombocytopenia Syndrome							2
	Hemorrhagic fever with renal syndrome							
	Western equine encephalitis							
	Tick-borne encephalitis							
	Anthrax							
	Chikungunya fever					1		7
	Scrub typhus(Tsutsugamushi disease)					2	7	31
	Dengue fever	2	2	1	1	43	6	151
	Eastern equine encephalitis							
	Avian influenza (excluding H5N1 and H7N9)							
	Nipah virus infection							
	Japanese spotted fever					1	6	493
	Japanese encephalitis						1	6
	Hantavirus pulmonary syndrome							
	Herpes B virus infection							
	Glanders							
	Brucellosis	1				1		2
	Venezuelan equine encephalitis							
Hendra virus infection								
Epidemic typhus								
Botulism								
Malaria			1		10	1	29	
Tularemia								
Lyme disease					1		29	
Lyssavirus infection(excluding rabies)								
Rift valley fever								
Melioidosis								
Legionellosis	6	2	1	4	149	33	2,024	
Leptospirosis			1		5	1	48	
Rocky mountain spotted fever								

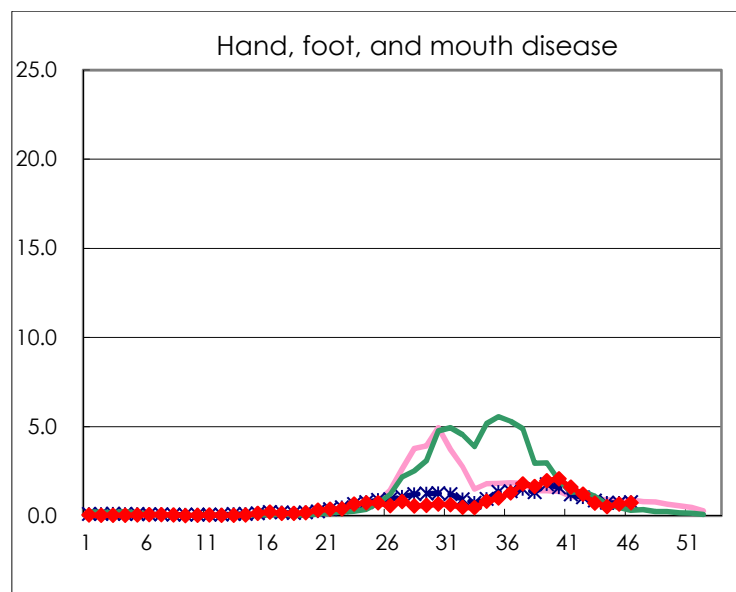
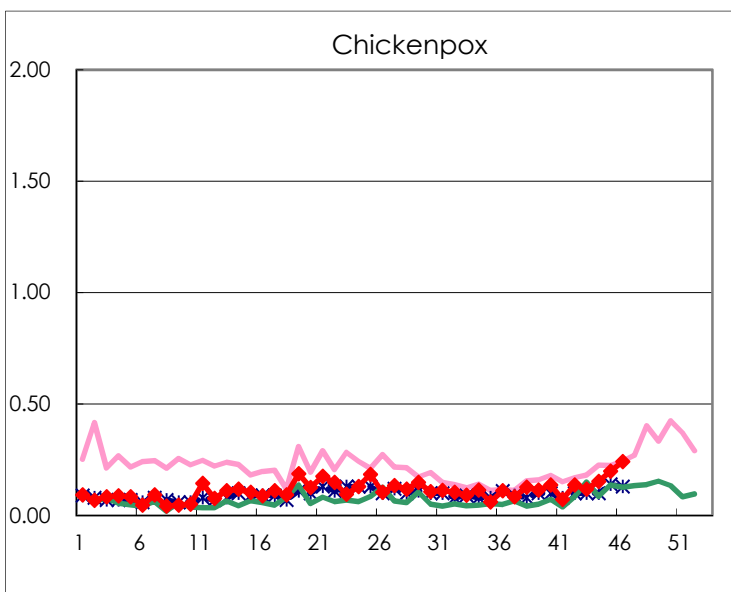
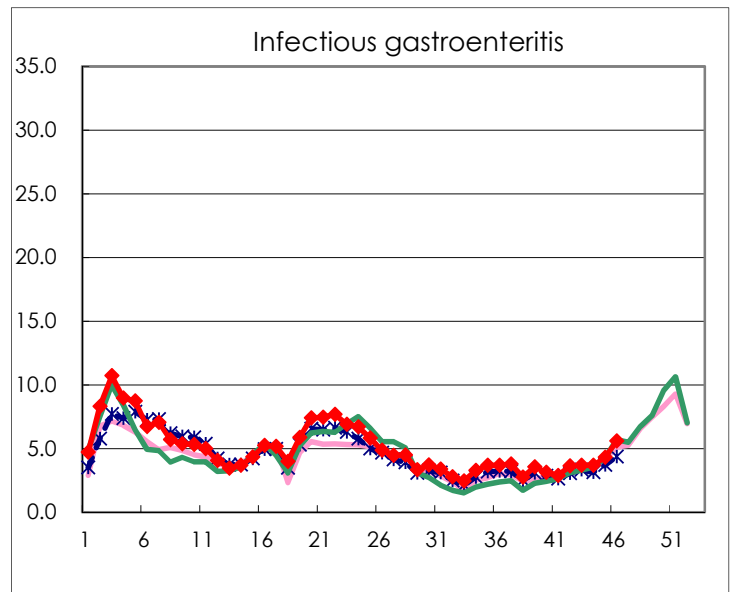
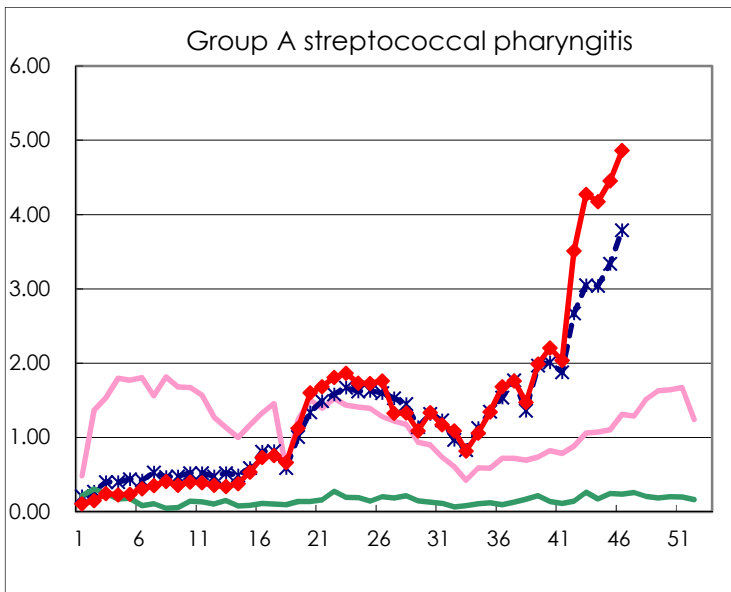
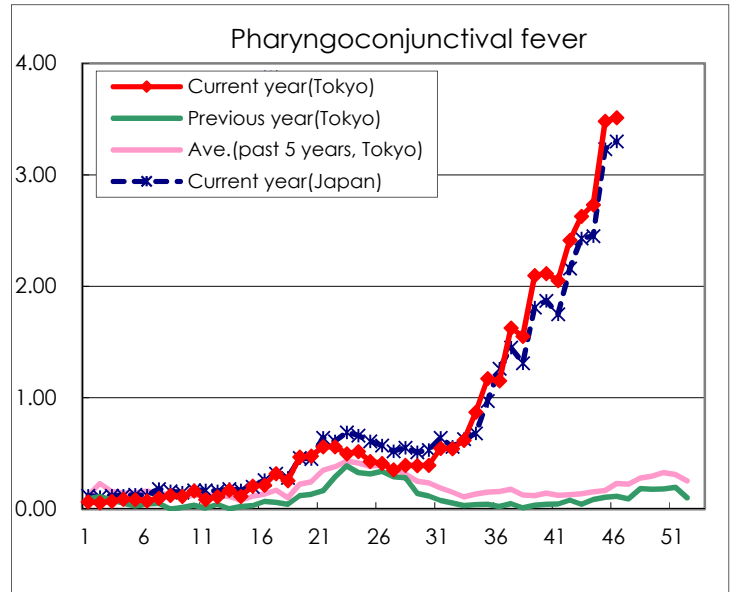
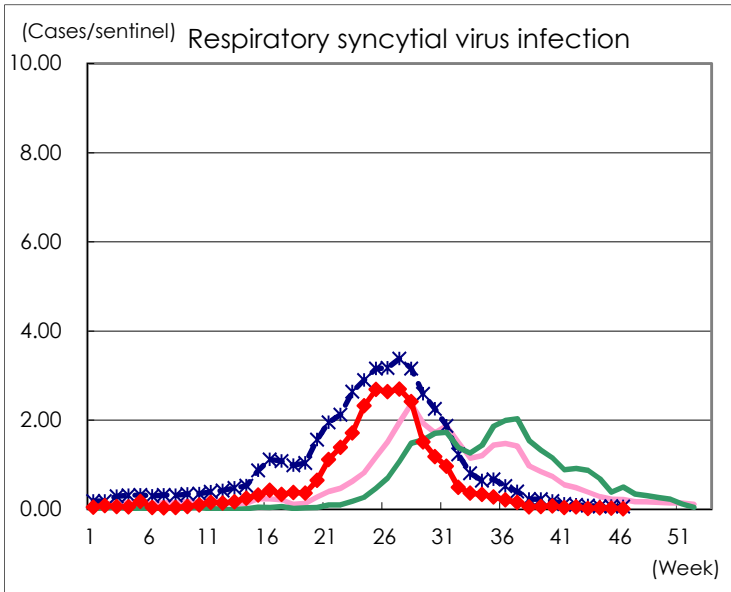
Category	Diseases	Tokyo					Japan	
		43rd	44th	45th	46th	Cum 2023	46th	Cum 2023
V	Amebiasis		1	1	1	81	5	429
	Viral hepatitis(excluding hepatitis A and E)	1		2	1	42	1	214
	CRE infection	6	7	7	3	197	36	1,843
	Acute Flaccid Paralysis (excluding Acute poliomyelitis)					6		49
	Acute encephalitis(excluding JE and WNE)	3		1		36	8	529
	Cryptosporidiosis					1		11
	Creutzfeldt-Jakob disease			1		17	2	141
	Severe invasive streptococcal infections(TSLS)	5		2	4	109	16	758
	Acquired immunodeficiency syndrome (AIDS)	9	4	4	4	265	9	825
	Giardiasis					10		35
	Invasive <i>Haemophilus influenzae</i> disease		1	1		43	4	481
	Invasive meningococcal disease					2		15
	Invasive pneumococcal disease	6	6	9	5	180	33	1,579
	Varicella (limited to hospitalized case)				1	53	6	332
	Congenital rubella syndrome							
	Syphilis	68	51	74	67	3,280	174	13,251
	Disseminated cryptococcosis			2		16	1	152
	Tetanus					6	2	99
	Vancomycin-resistant <i>S. aureus</i> infection							
	Vancomycin-resistant <i>Enterococcus</i> infection					9	1	110
Pertussis	3	4			106	27	883	
Rubella					4		11	
Measles					7		25	
MDRA infection					3		13	

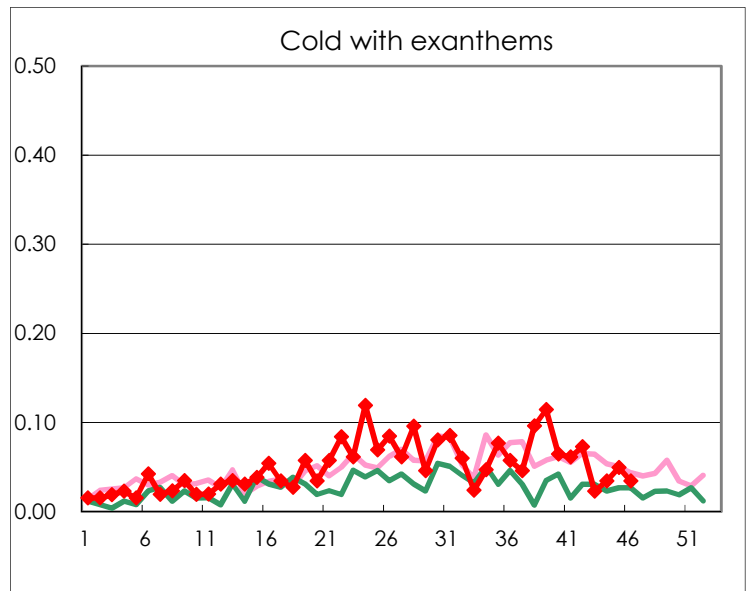
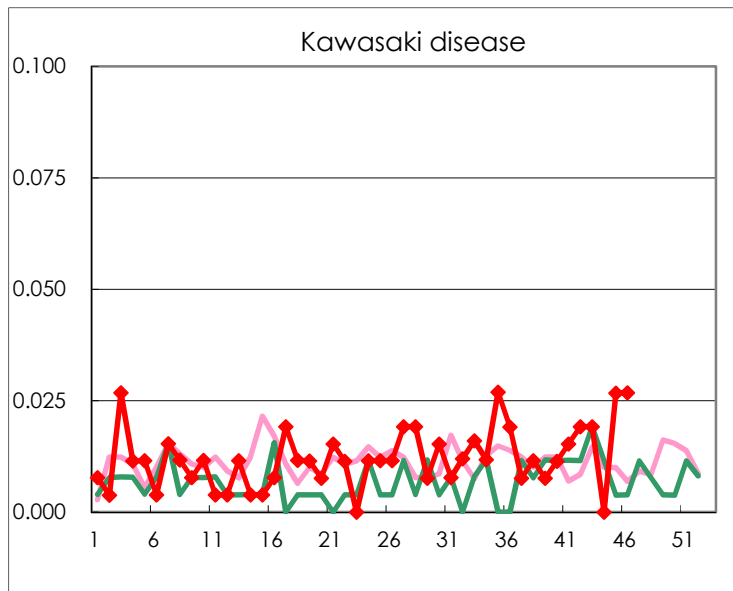
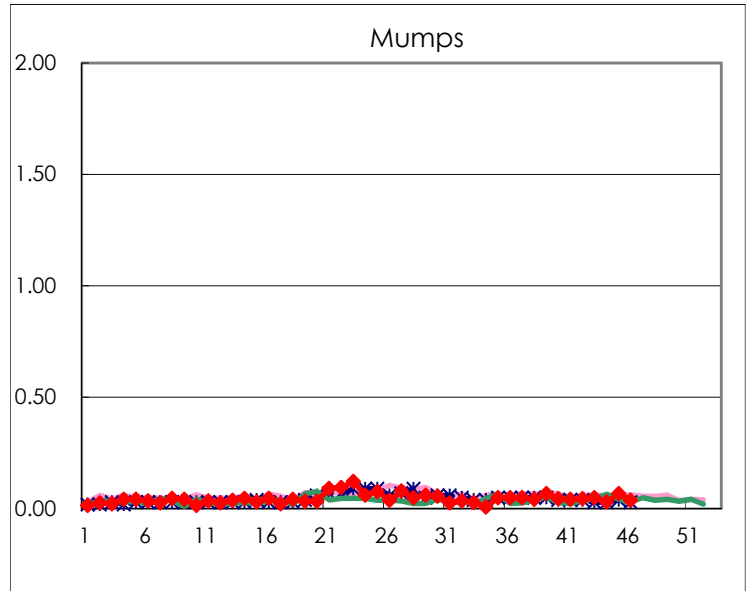
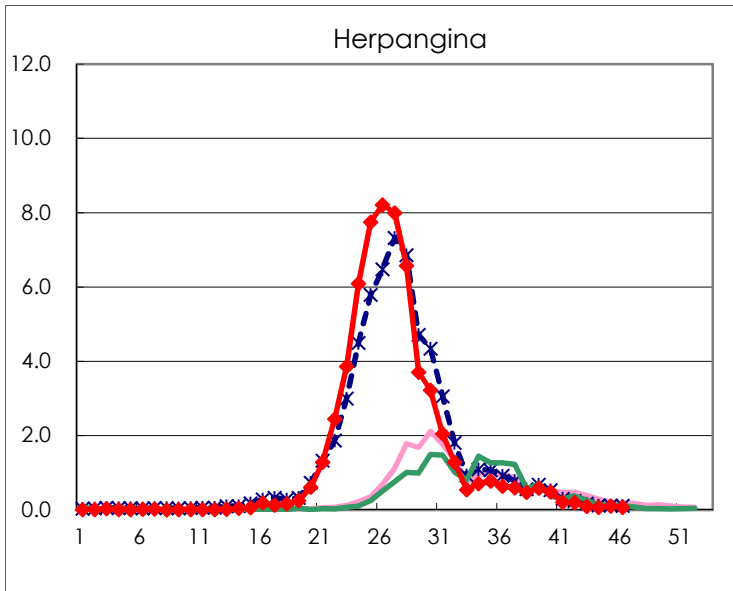
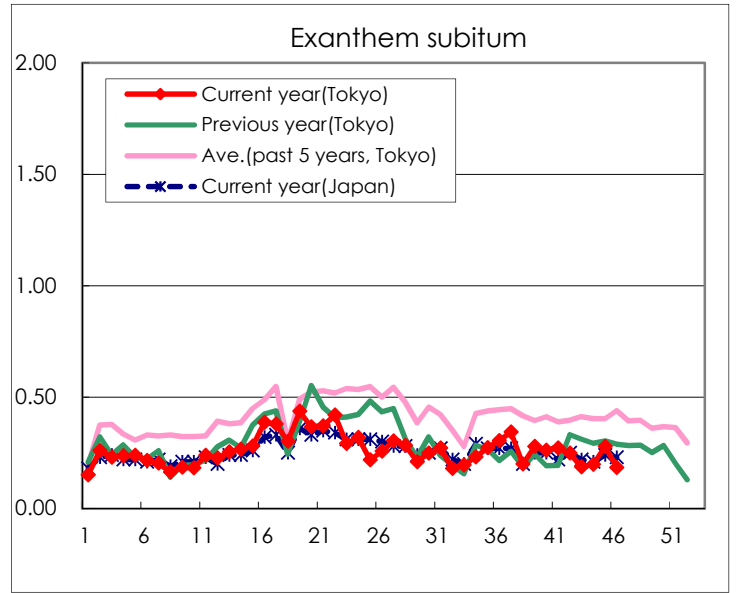
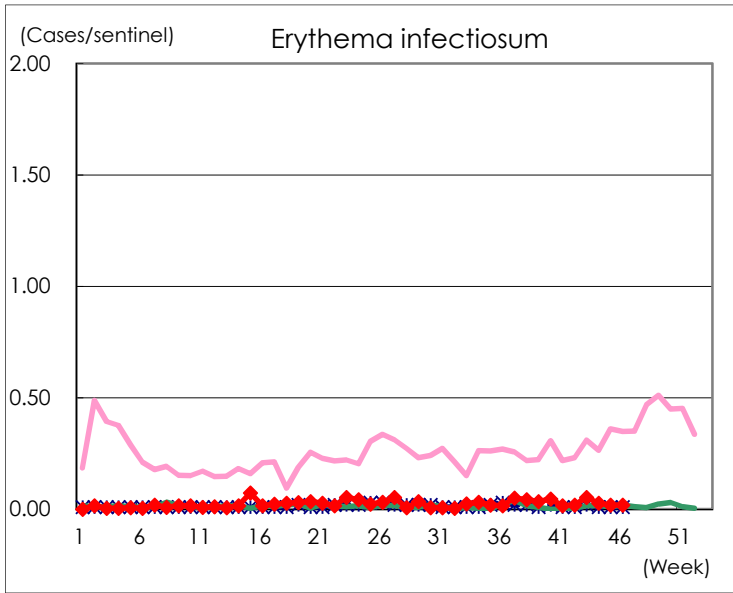
Number of patients with the diseases to be reported  
by the designated clinics and hospitals

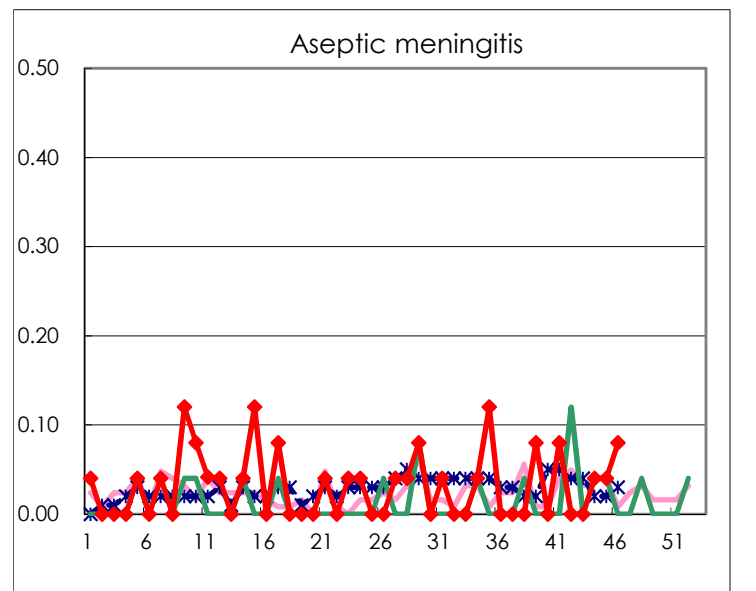
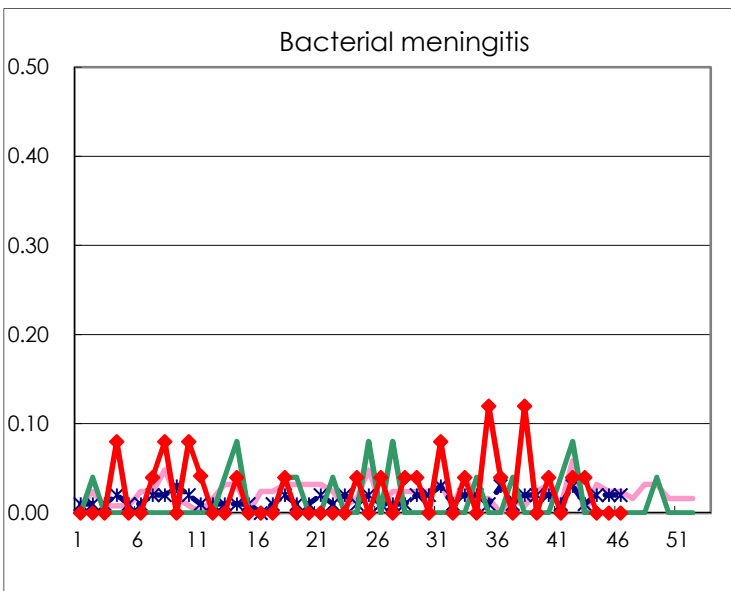
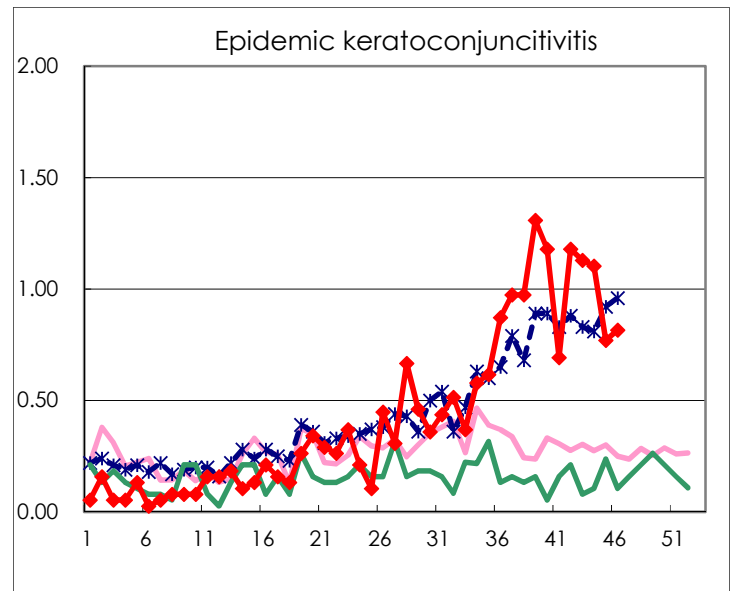
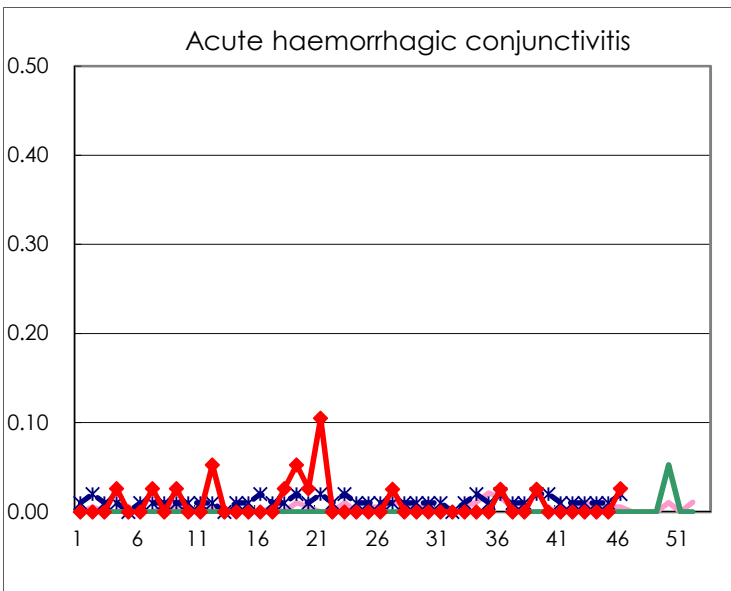
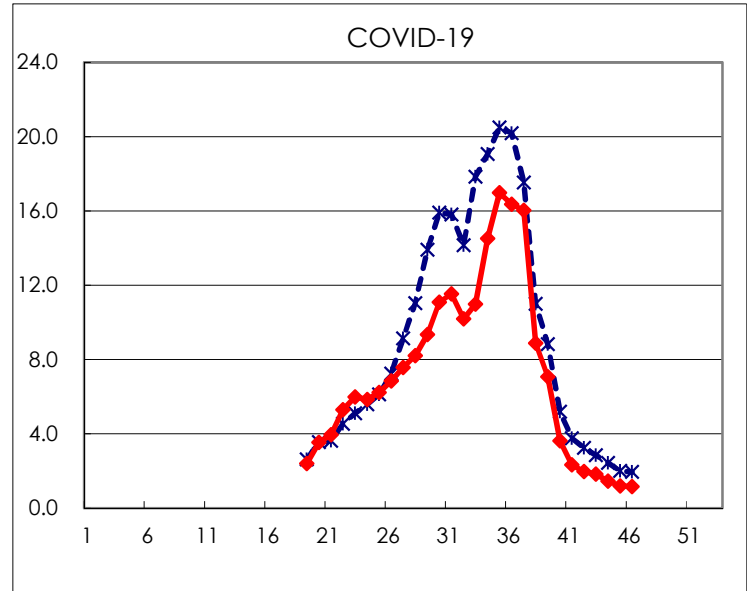
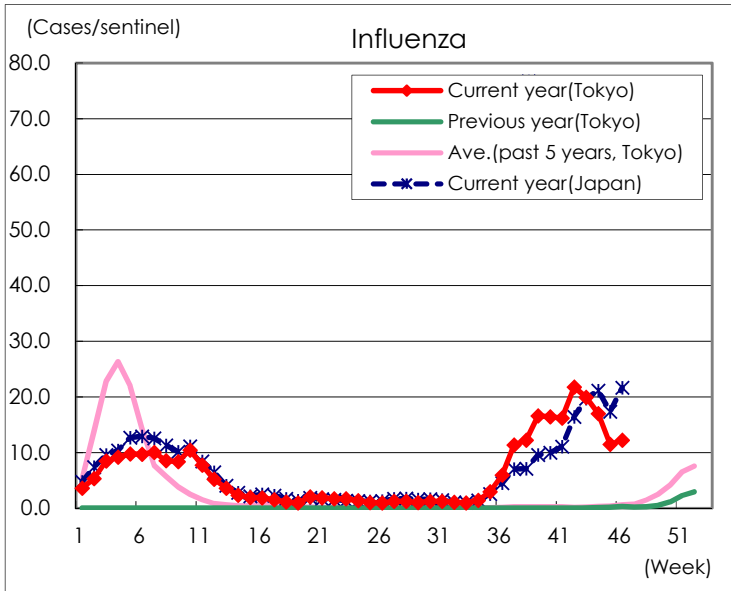
Diseases	Tokyo				
	43rd	44th	45th	46th	/sentinel
Respiratory syncytial virus infection	4	9	6	3	0.01
Pharyngoconjunctival fever	686	716	912	917	3.51
Group A streptococcal pharyngitis	1,115	1,094	1,167	1,269	4.86
Infectious gastroenteritis	962	967	1,132	1,459	5.59
Chickenpox	31	40	52	63	0.24
Hand, foot, and mouth disease	184	133	171	192	0.74
Erythema infectiosum	14	7	5	5	0.02
Exanthem subitum	49	52	73	48	0.18
Herpangina	25	17	27	17	0.07
Mumps	13	8	18	10	0.04
Kawasaki disease	5		7	7	0.03
Cold with exanthems	6	9	13	9	0.03
Influenza	8,282	7,086	4,779	5,082	12.25
COVID-19	764	607	501	486	1.17
Acute hemorrhagic conjunctivitis				1	0.03
Epidemic keratoconjunctivitis	44	43	30	31	0.82
Bacterial meningitis	1				
Aseptic meningitis		1	1	2	0.08
Mycoplasma pneumonia	2	1	5	1	0.04
Chlamydial pneumonia (excluding psittacosis)		1		1	0.04
Infectious gastroenteritis (only by Rotavirus)					
Influenza-Associated Hospitalizations	24	36	31	40	1.60
COVID-19-Associated Hospitalizations	49	80	48	53	2.12

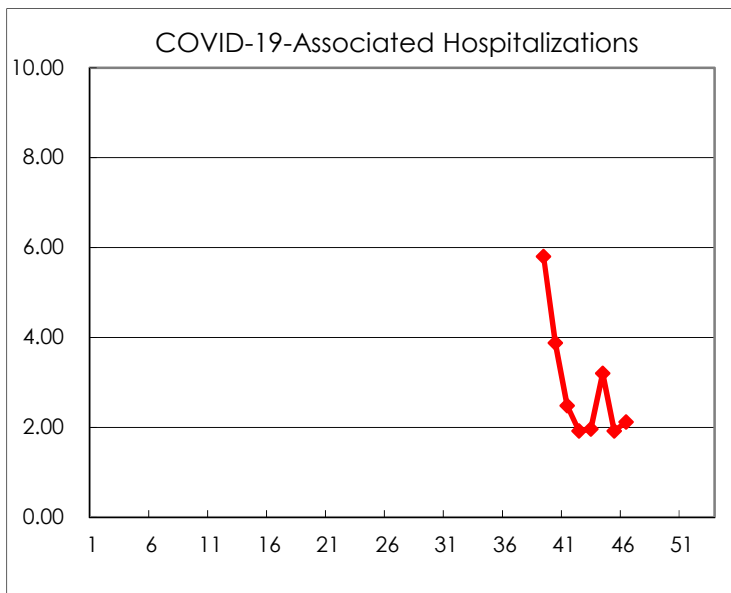
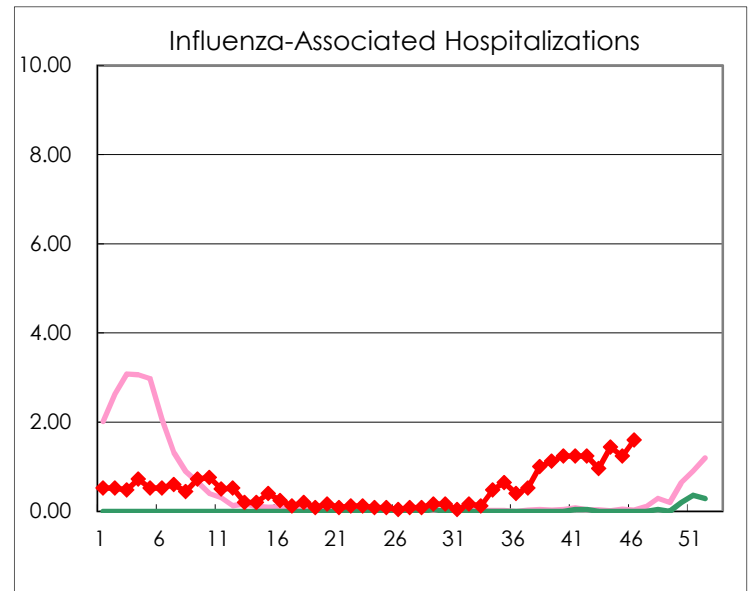
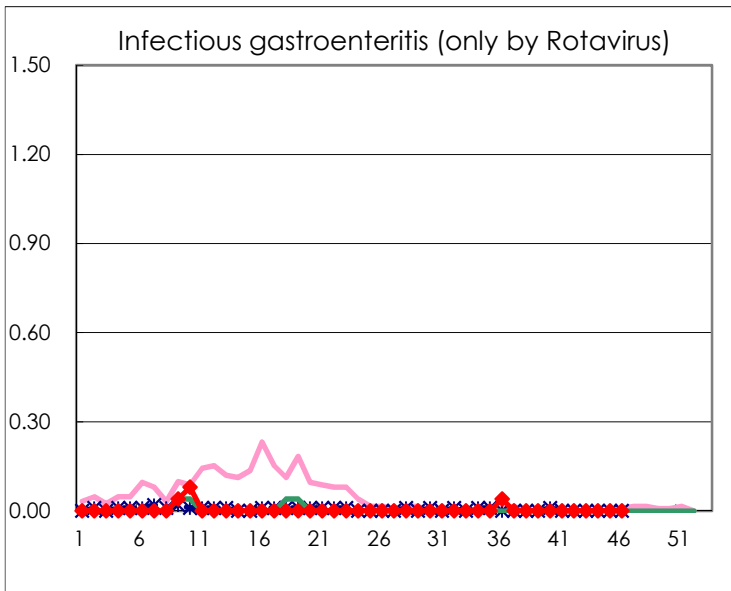
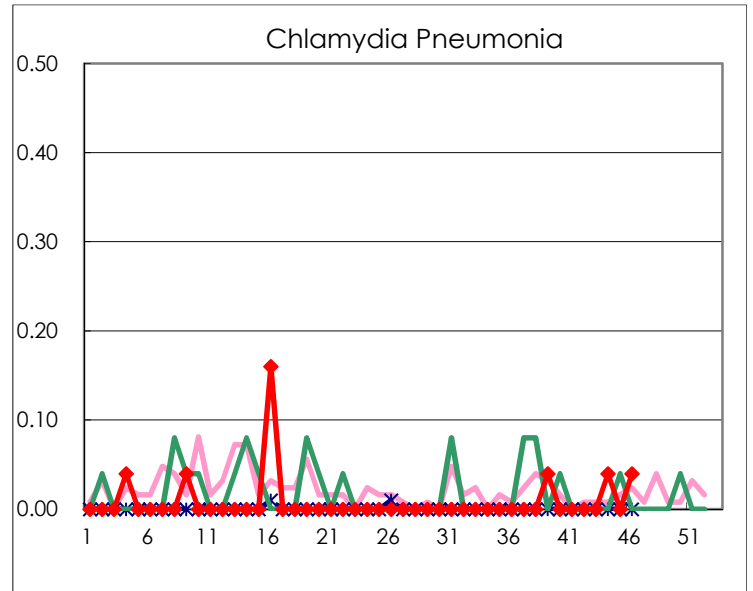
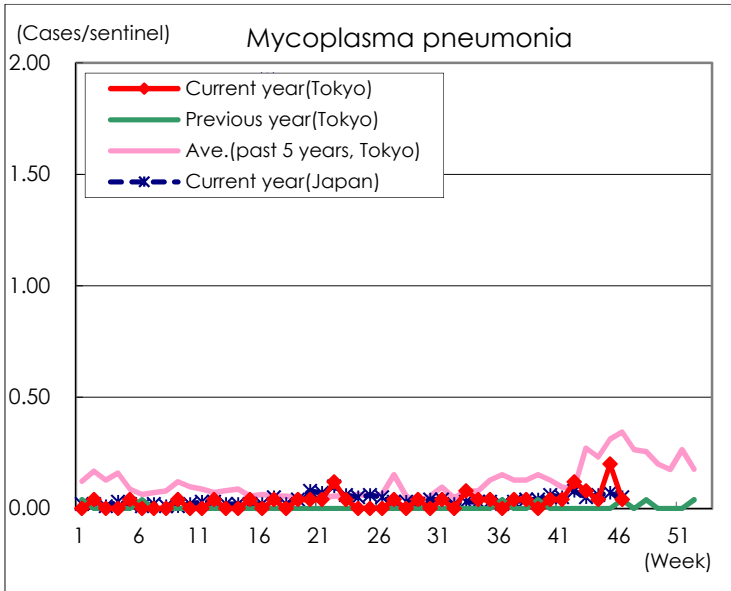
( Blank means 0. )

# Disease Trend Graph (weekly reported cases per sentinel in comparison)









Number of sentinel facilities for weekly reporting		
Types of sentinels	Number of sentinels	Sentinels having reported
Pediatric	264	261
Influenza COVID-19	419	415
Ophthalmic	39	38
Specially-designated	25	25