

7 December 2023 / Number 48 (11/27 ~ 12/3)

Surveillance System in Tokyo, Japan

The infectious diseases which all physicians must report
All physicians must report to health centers the incidence of the diseases which are shown at page one. Health centers electronically report the individual cases to Tokyo Metropolitan Infectious Disease Surveillance Center.

The infectious diseases required to be reported by the sentinels
The numbers of patients who visit the sentinel clinics or hospitals during a week are reported to health centers in Tokyo. And they electronically report the numbers to Tokyo Metropolitan Infectious Disease Surveillance Center. We have about 500 sentinel clinics and hospitals in Tokyo.

Tokyo Metropolitan Institute of Public Health

TEL:81-3-3363-3213 FAX:81-3-5332-7365

e-mail:tmiph@section.metro.tokyo.jp

URL:idsc.tmiph.metro.tokyo.lg.jp/

Number of patients with the diseases which all physicians must report

Category	Diseases	Tokyo					Japan	
		45th	46th	47th	48th	Cum 2023	48th	Cum 2023
I	Ebola hemorrhagic fever							
	Crimean-Congo hemorrhagic fever							
	Smallpox							
	South American hemorrhagic fever							
	Plague							
	Marburg disease							
	Lassa fever							
II	Acute poliomyelitis							
	Tuberculosis	41	40	25	53	1,859	279	13,479
	Diphtheria							
	Severe Acute Respiratory Syndrome(SARS)							
	Middle East Respiratory Syndrome (MERS)							
	Avian influenza H5N1							
	Avian influenza H7N9							
III	Cholera					2		2
	Shigellosis		1			9	4	42
	Enterohemorrhagic Escherichia coli infection	6	8	5	8	412	64	3,653
	Typhoid fever					8		36
	Paratyphoid fever					3	1	9
IV	Hepatitis E	1	2	1	4	150	11	500
	West Nile fever							
	Hepatitis A					12		50
	Echinococcosis							13
	Mpox	2	1	1	1	162	1	218
	Yellow fever							
	Psittacosis							8
	Omsk hemorrhagic fever							
	Relapsing fever							21
	Kyasanur forest disease							
	Q fever							
	Rabies							
	Coccidioidomycosis						1	4
	Zika virus infection							1
	Severe Fever with Thrombocytopenia Syndrome							131
	Hemorrhagic fever with renal syndrome							
	Western equine encephalitis							
	Tick-borne encephalitis							
	Anthrax							
	Chikungunya fever					1		7
	Scrub typhus(Tsutsugamushi disease)		2	1		8	53	305
	Dengue fever	1	1	1		44	7	163
	Eastern equine encephalitis							
	Avian influenza (excluding H5N1 and H7N9)							
	Nipah virus infection							
	Japanese spotted fever					1	3	500
	Japanese encephalitis							6
	Hantavirus pulmonary syndrome							
	Herpes B virus infection							
	Glanders							
	Brucellosis					1		2
	Venezuelan equine encephalitis							
	Hendra virus infection							
Epidemic typhus								
Botulism								
Malaria	1		1		11		32	
Tularemia								
Lyme disease					1		29	
Lyssavirus infection(excluding rabies)								
Rift valley fever								
Melioidosis								
Legionellosis	1	4	4	1	155	37	2,118	
Leptospirosis	1				5		49	
Rocky mountain spotted fever								

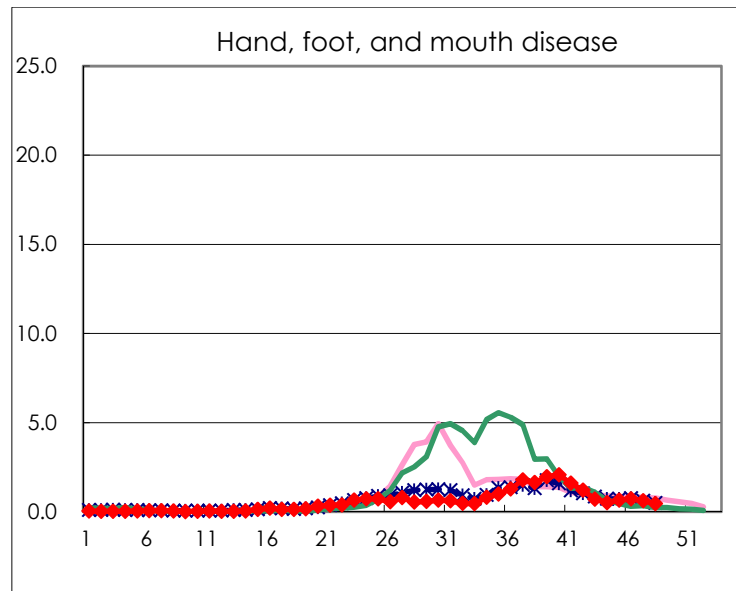
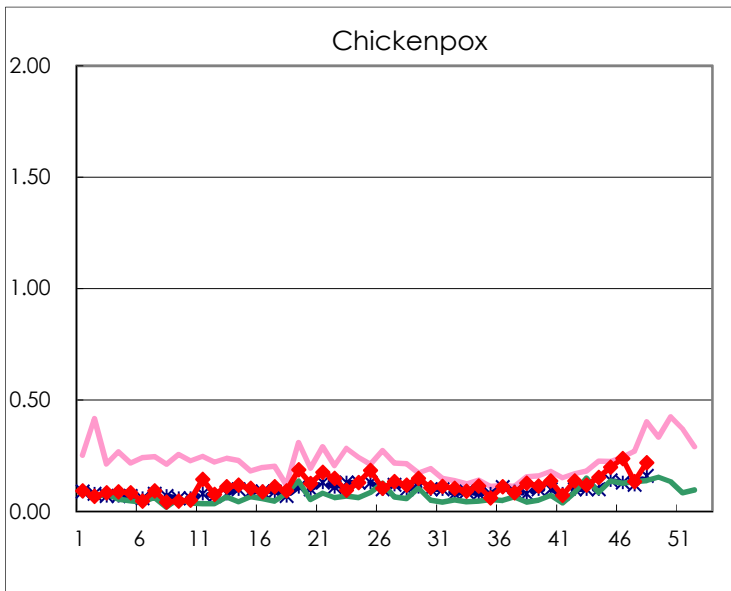
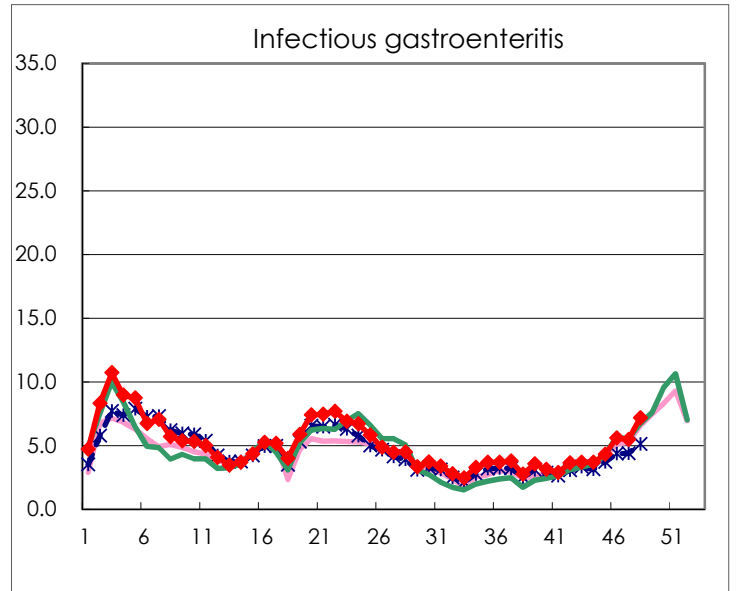
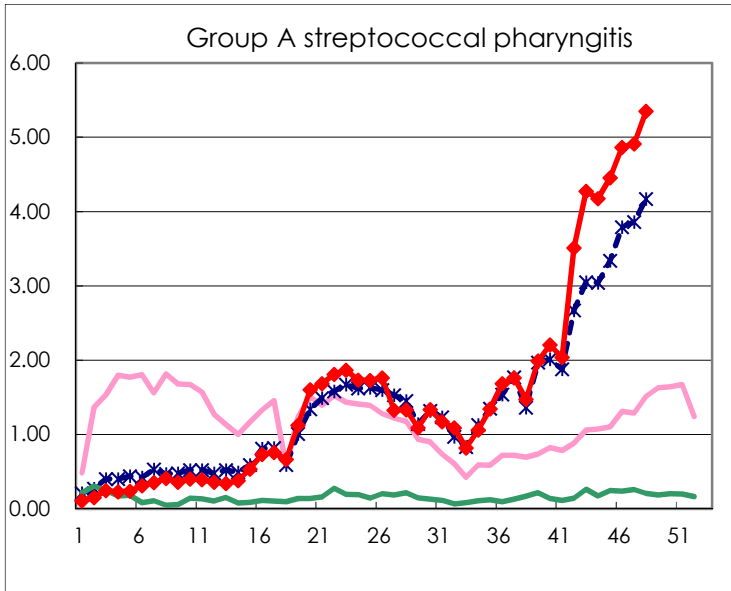
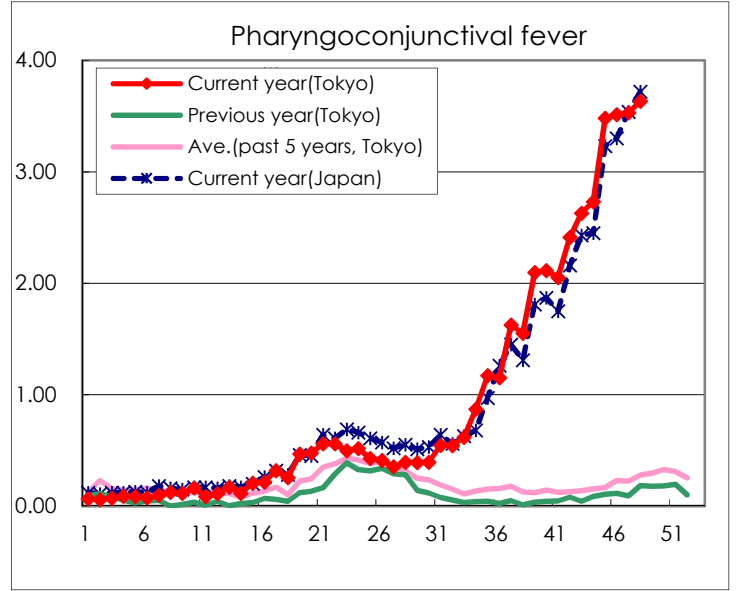
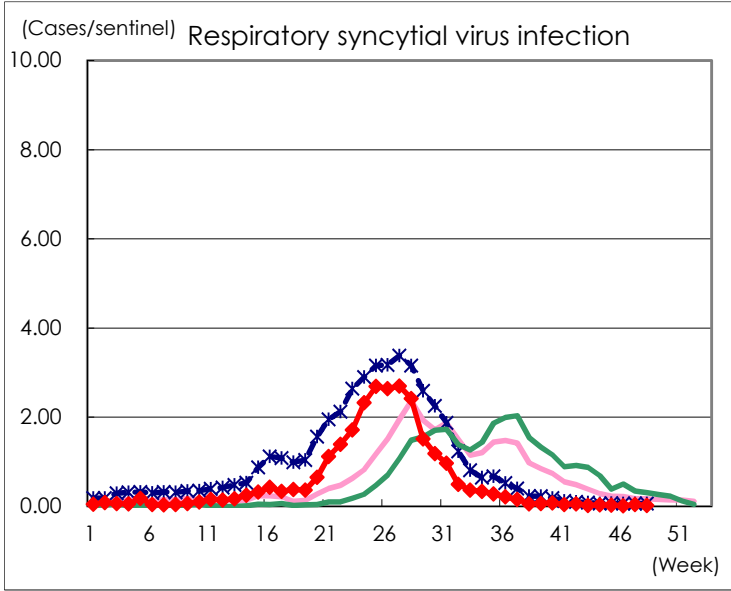
Category	Diseases	Tokyo					Japan	
		45th	46th	47th	48th	Cum 2023	48th	Cum 2023
V	Amebiasis	1	1	2		83	3	442
	Viral hepatitis(excluding hepatitis A and E)	2	1			42	5	225
	CRE infection	7	4	6	5	209	34	1,938
	Acute Flaccid Paralysis (excluding Acute poliomyelitis)					6		53
	Acute encephalitis(excluding JE and WNE)	1				36	12	563
	Cryptosporidiosis					1		11
	Creutzfeldt-Jakob disease	1	1	1		19	2	149
	Severe invasive streptococcal infections(TSLS)	2	4	7	6	122	13	810
	Acquired immunodeficiency syndrome (AIDS)	4	5	4	3	273	7	857
	Giardiasis					10		36
	Invasive <i>Haemophilus influenzae</i> disease	1		2		45	6	501
	Invasive meningococcal disease					3		16
	Invasive pneumococcal disease	9	5	4	7	190	49	1,697
	Varicella (limited to hospitalized case)		1	1	2	56	13	363
	Congenital rubella syndrome							
	Syphilis	75	75	44	74	3,410	180	13,788
	Disseminated cryptococcosis	2				16	2	157
	Tetanus					6		99
	Vancomycin-resistant <i>S. aureus</i> infection							
	Vancomycin-resistant <i>Enterococcus</i> infection					9		112
	Pertussis			2	1	110	22	922
Rubella					4	1	12	
Measles					7		25	
MDRA infection					3		13	

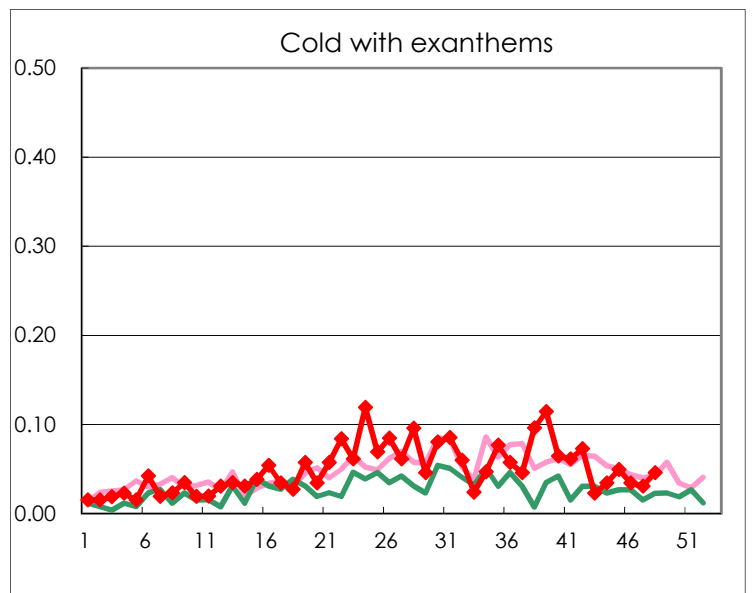
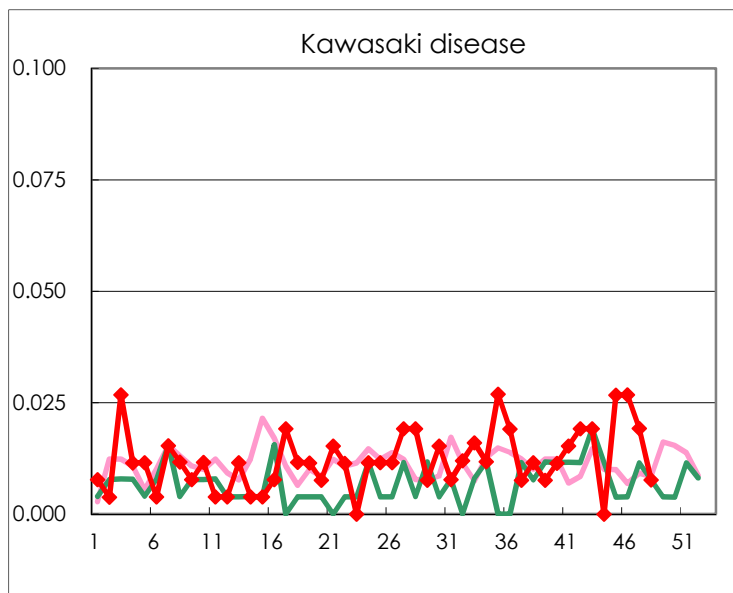
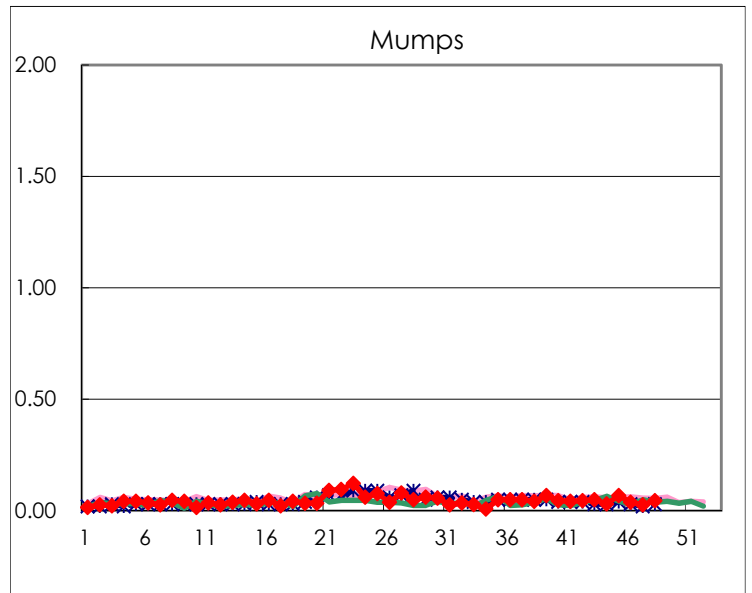
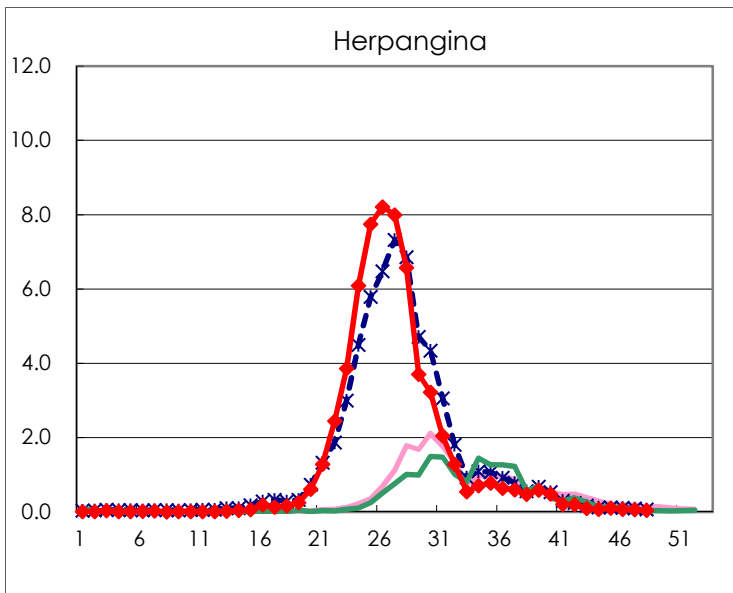
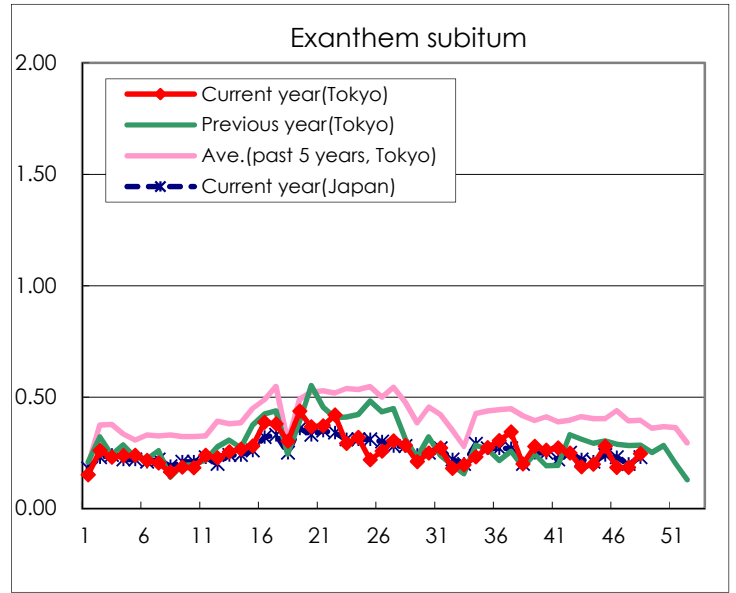
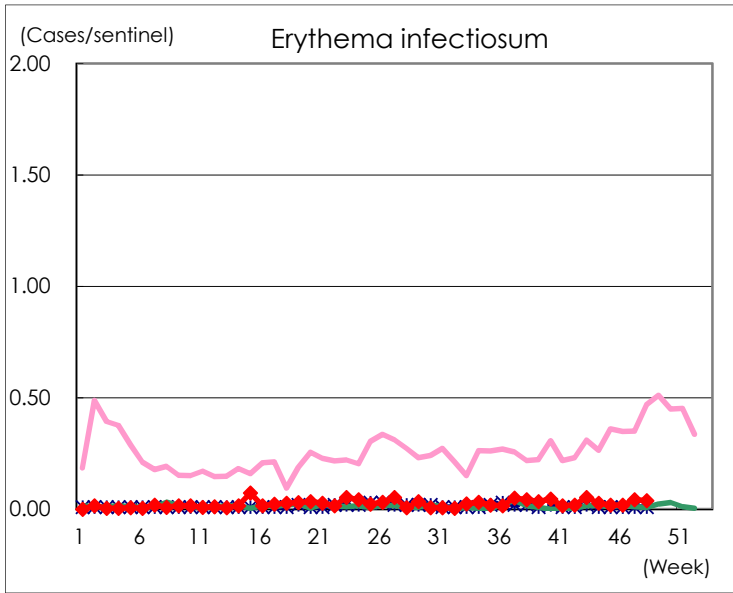
Number of patients with the diseases to be reported
by the designated clinics and hospitals

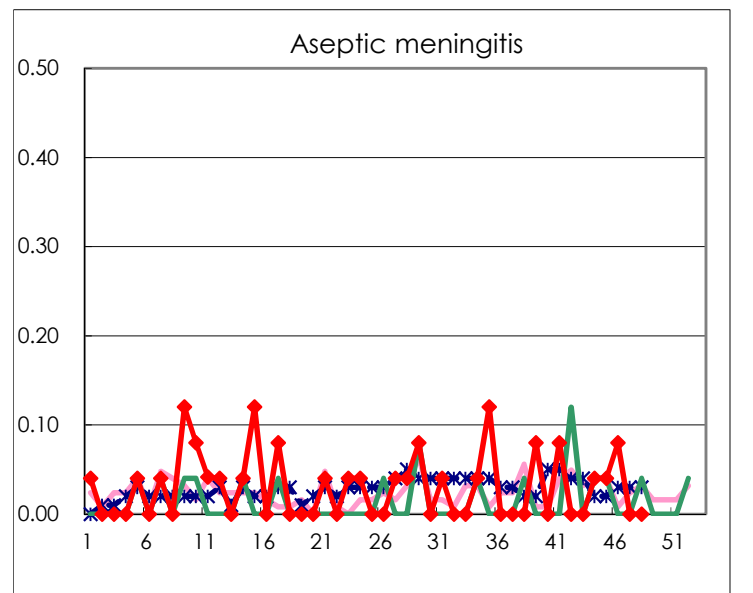
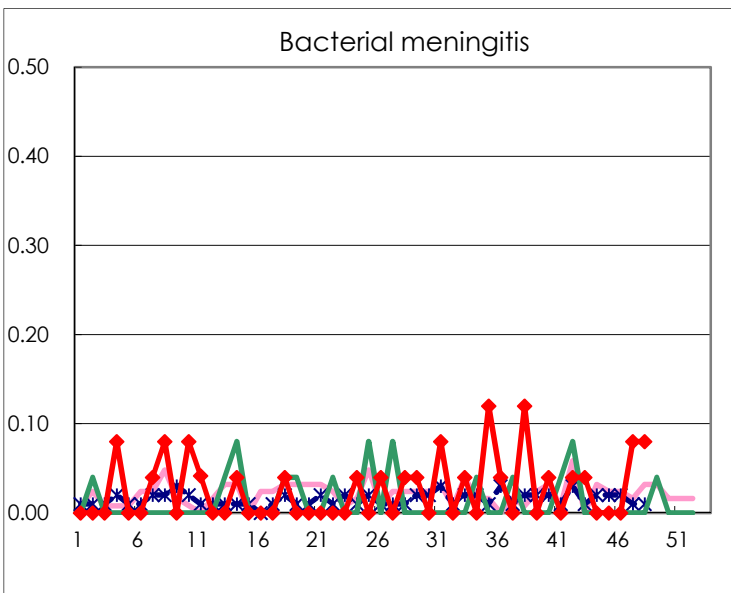
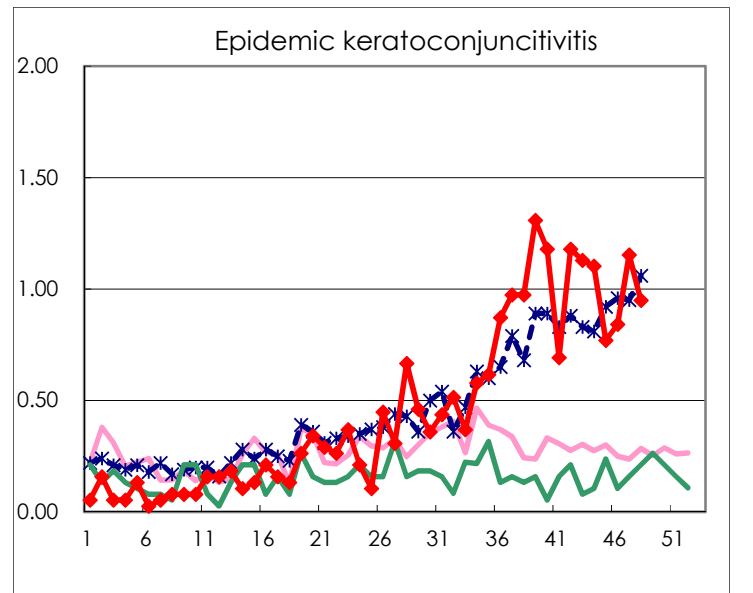
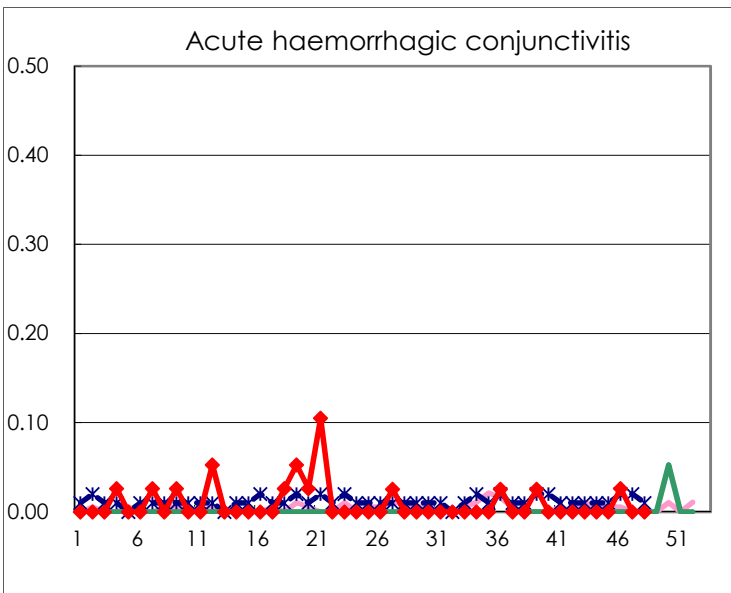
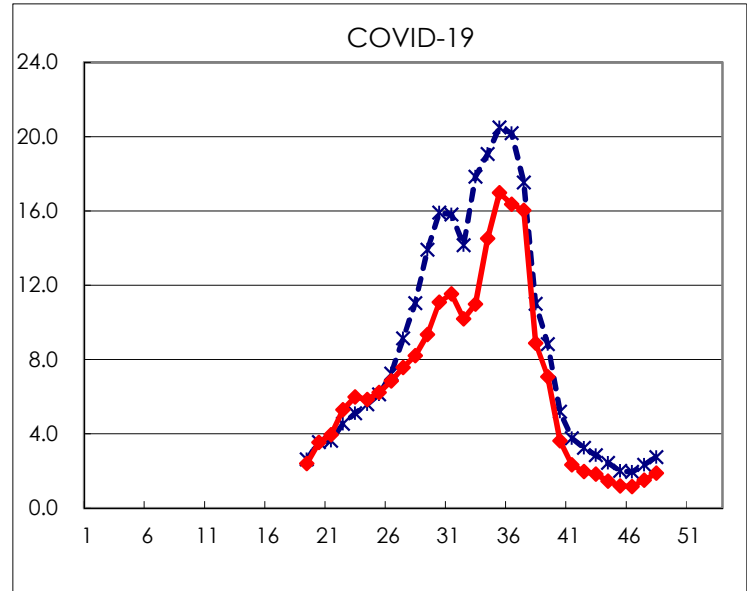
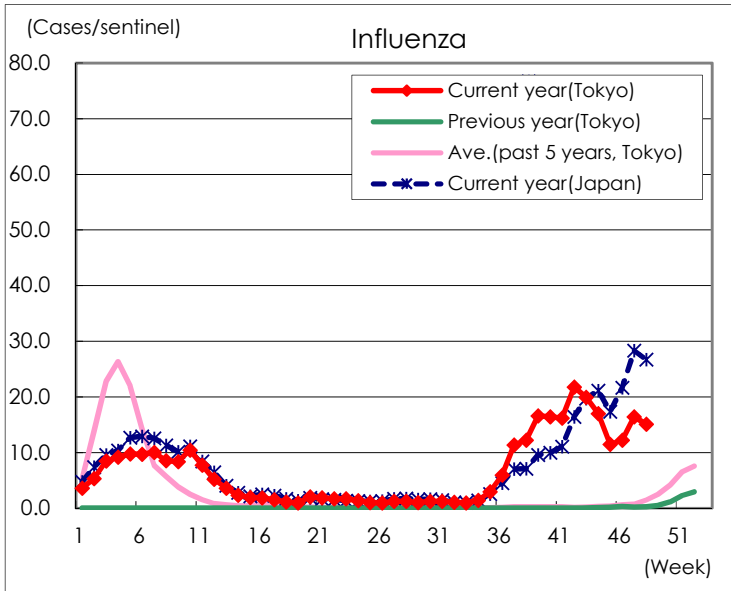
Diseases	Tokyo				
	45th	46th	47th	48th	/sentinel
Respiratory syncytial virus infection	6	3	10	5	0.02
Pharyngoconjunctival fever	912	917	918	948	3.63
Group A streptococcal pharyngitis	1,167	1,269	1,277	1,397	5.35
Infectious gastroenteritis	1,132	1,459	1,420	1,876	7.19
Chickenpox	52	62	35	57	0.22
Hand, foot, and mouth disease	171	192	162	118	0.45
Erythema infectiosum	5	5	11	10	0.04
Exanthem subitum	73	48	48	64	0.25
Herpangina	27	17	15	10	0.04
Mumps	18	10	7	12	0.05
Kawasaki disease	7	7	5	2	0.01
Cold with exanthems	13	9	8	12	0.05
Influenza	4,779	5,082	6,800	6,259	15.08
COVID-19	501	486	625	784	1.89
Acute hemorrhagic conjunctivitis		1			
Epidemic keratoconjunctivitis	30	32	45	37	0.95
Bacterial meningitis			2	2	0.08
Aseptic meningitis	1	2			
Mycoplasma pneumonia	5	1		6	0.24
Chlamydial pneumonia (excluding psittacosis)		1			
Infectious gastroenteritis (only by Rotavirus)				1	0.04
Influenza-Associated Hospitalizations	31	40	40	39	1.56
COVID-19-Associated Hospitalizations	48	53	60	56	2.24

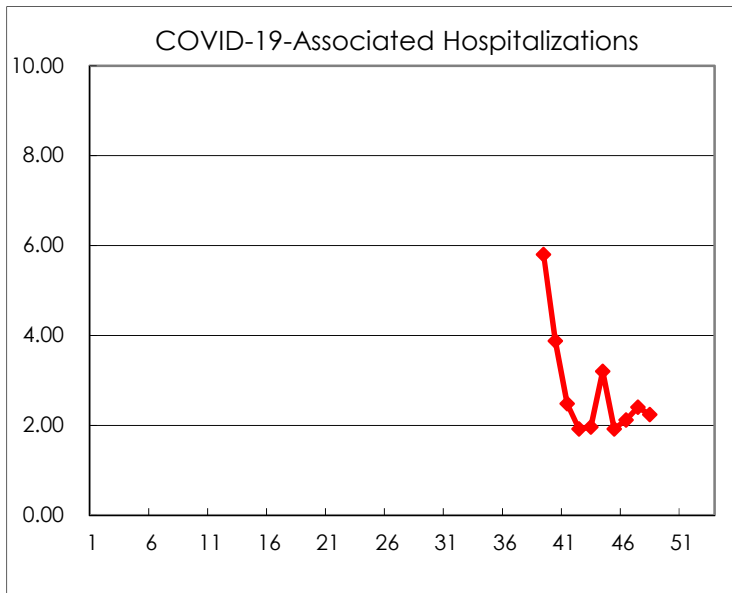
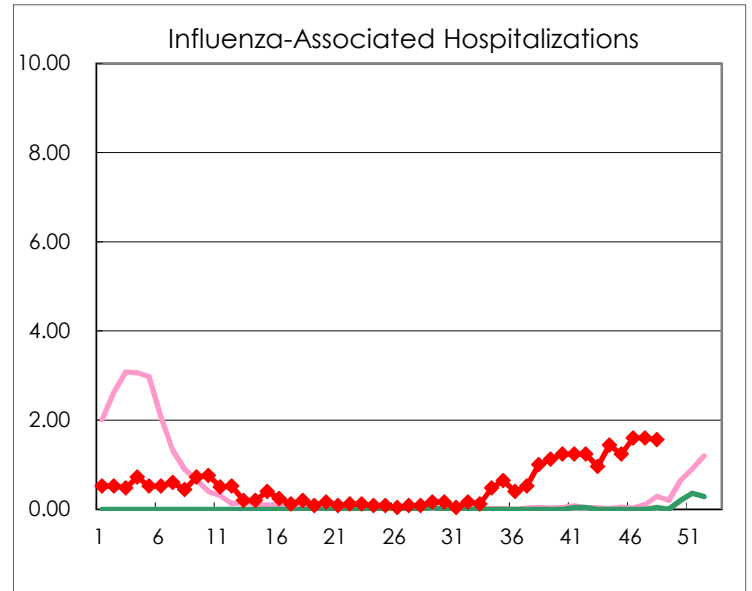
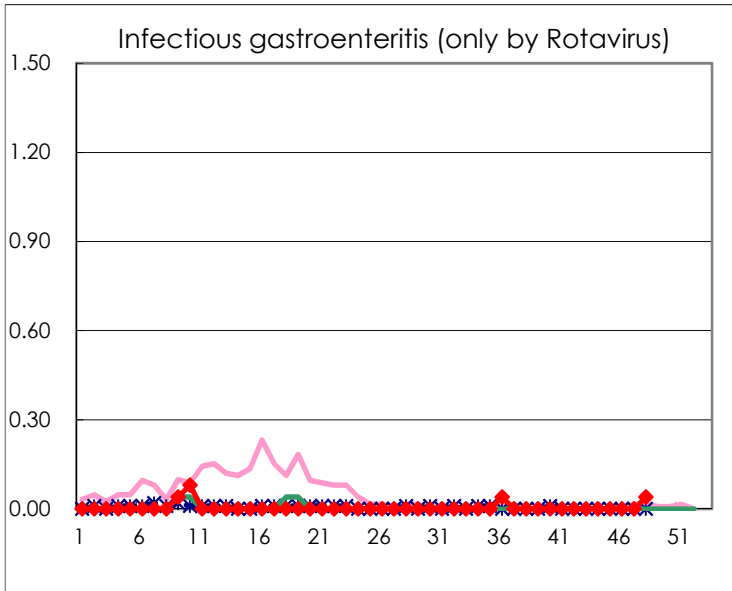
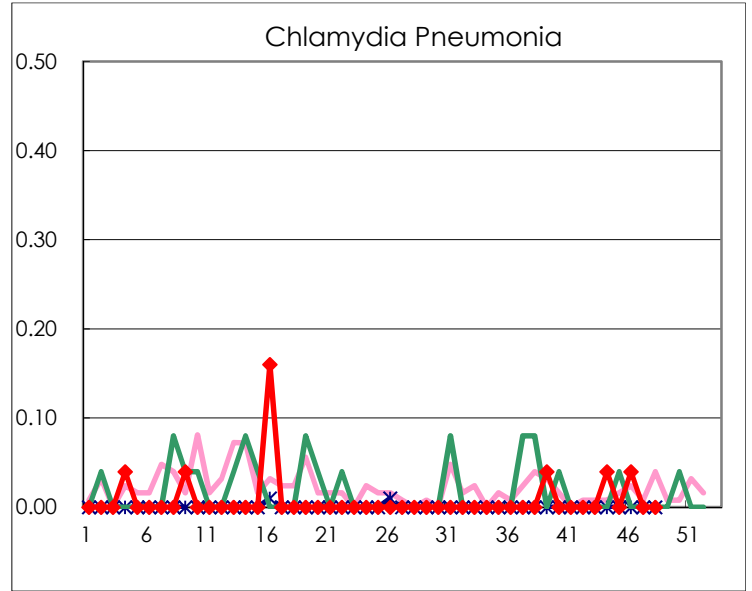
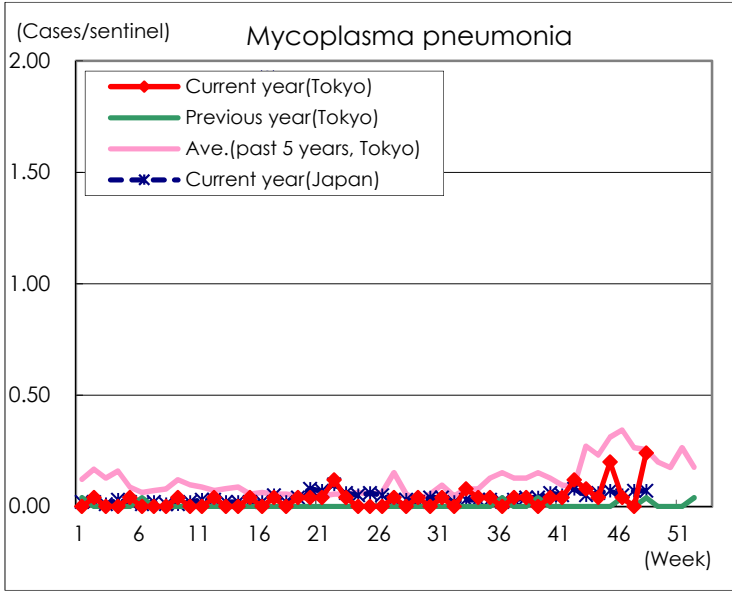
(Blank means 0.)

Disease Trend Graph (weekly reported cases per sentinel in comparison)









Number of sentinel facilities for weekly reporting		
Types of sentinels	Number of sentinels	Sentinels having reported
Pediatric	264	261
Influenza COVID-19	419	415
Ophthalmic	39	39
Specially-designated	25	25