
INFECTIOUS DISEASES WEEKLY REPORT

TOKYO iDWR

Tokyo Metropolitan Infectious Disease Surveillance Center

14 December 2023 / Number 49 (12/4 ~ 12/10)

Surveillance System in Tokyo, Japan

The infectious diseases which all physicians must report
All physicians must report to health centers the incidence of the diseases which are shown at page one. Health centers electronically report the individual cases to Tokyo Metropolitan Infectious Disease Surveillance Center.

The infectious diseases required to be reported by the sentinels
The numbers of patients who visit the sentinel clinics or hospitals during a week are reported to health centers in Tokyo. And they electronically report the numbers to Tokyo Metropolitan Infectious Disease Surveillance Center. We have about 500 sentinel clinics and hospitals in Tokyo.

Tokyo Metropolitan Institute of Public Health

TEL:81-3-3363-3213 FAX:81-3-5332-7365

e-mail:tmiph@section.metro.tokyo.jp

URL:idsc.tmiph.metro.tokyo.lg.jp/

Number of patients with the diseases which all physicians must report

Category	Diseases	Tokyo					Japan	
		46th	47th	48th	49th	Cum 2023	49th	Cum 2023
I	Ebola hemorrhagic fever							
	Crimean-Congo hemorrhagic fever							
	Smallpox							
	South American hemorrhagic fever							
	Plague							
	Marburg disease							
	Lassa fever							
II	Acute poliomyelitis							
	Tuberculosis	40	25	53	44	1,903	233	13,773
	Diphtheria							
	Severe Acute Respiratory Syndrome(SARS)							
	Middle East Respiratory Syndrome (MERS)							
	Avian influenza H5N1							
	Avian influenza H7N9							
III	Cholera					2		2
	Shigellosis	1				9	2	44
	Enterohemorrhagic Escherichia coli infection	8	5	8	7	419	38	3,694
	Typhoid fever					8	1	37
	Paratyphoid fever					3		9
IV	Hepatitis E	2	1	4	2	152	9	509
	West Nile fever							
	Hepatitis A					12		50
	Echinococcosis							13
	Mpox	1	1	2	1	164	1	220
	Yellow fever							
	Psittacosis							8
	Omsk hemorrhagic fever							
	Relapsing fever						1	22
	Kyasanur forest disease							
	Q fever							
	Rabies							
	Coccidioidomycosis							4
	Zika virus infection							1
	Severe Fever with Thrombocytopenia Syndrome							131
	Hemorrhagic fever with renal syndrome							
	Western equine encephalitis							
	Tick-borne encephalitis							
	Anthrax							
	Chikungunya fever					1		7
	Scrub typhus(Tsutsugamushi disease)	2	1		1	9	46	353
	Dengue fever	1	1			44	3	166
	Eastern equine encephalitis							
	Avian influenza (excluding H5N1 and H7N9)							
	Nipah virus infection							
	Japanese spotted fever					1	2	502
	Japanese encephalitis							6
	Hantavirus pulmonary syndrome							
	Herpes B virus infection							
	Glanders							
	Brucellosis					1		2
	Venezuelan equine encephalitis							
	Hendra virus infection							
Epidemic typhus								
Botulism								
Malaria		1		2	13	2	34	
Tularemia								
Lyme disease					1		29	
Lyssavirus infection(excluding rabies)								
Rift valley fever								
Melioidosis								
Legionellosis	4	4	1	3	158	34	2,158	
Leptospirosis					5		49	
Rocky mountain spotted fever								

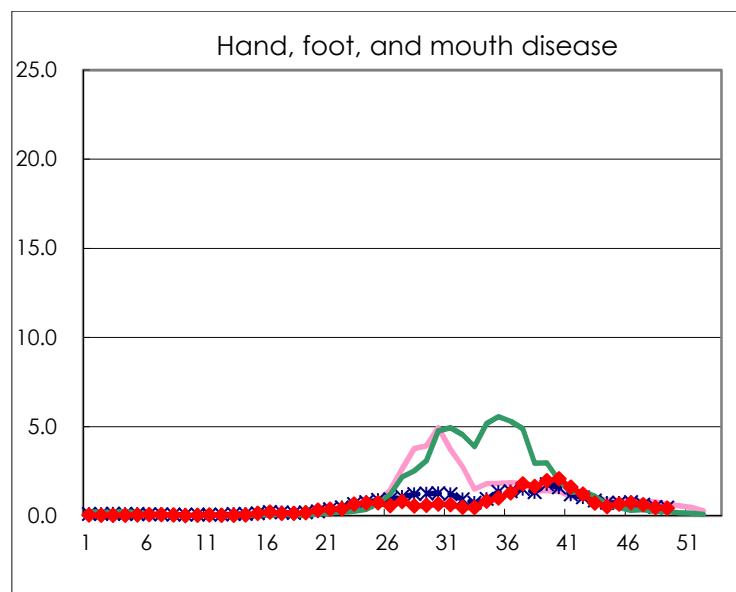
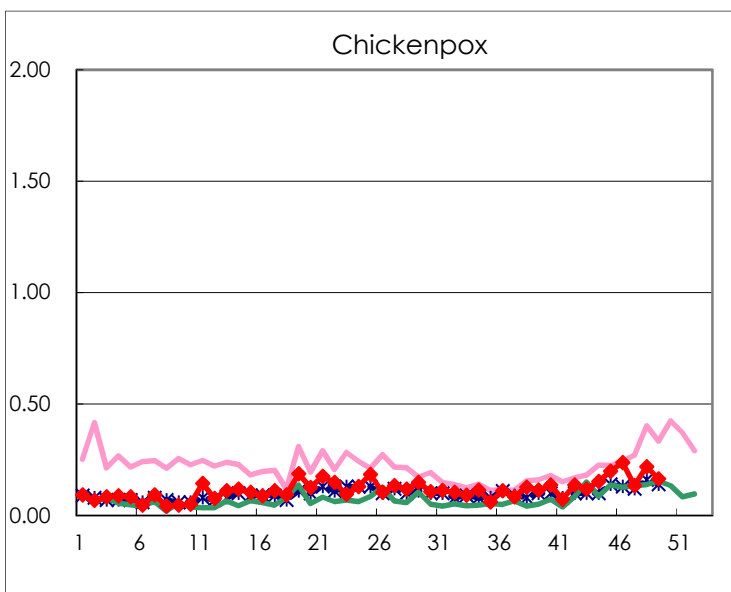
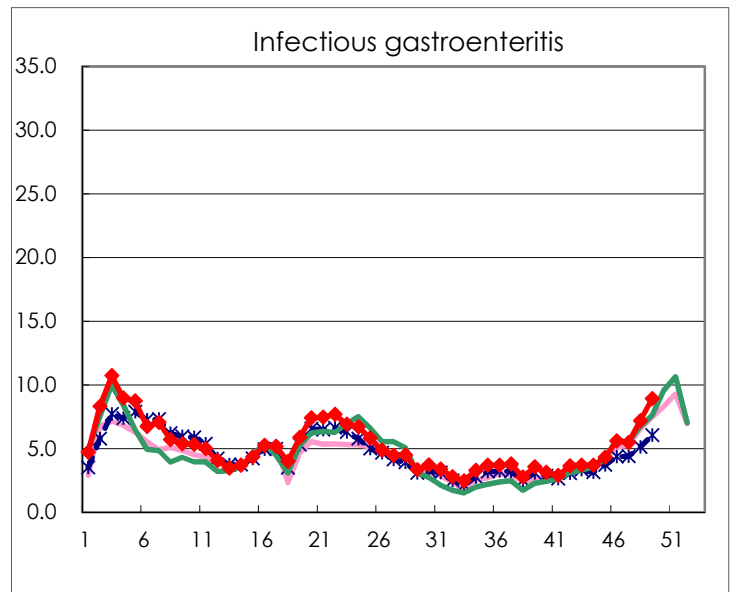
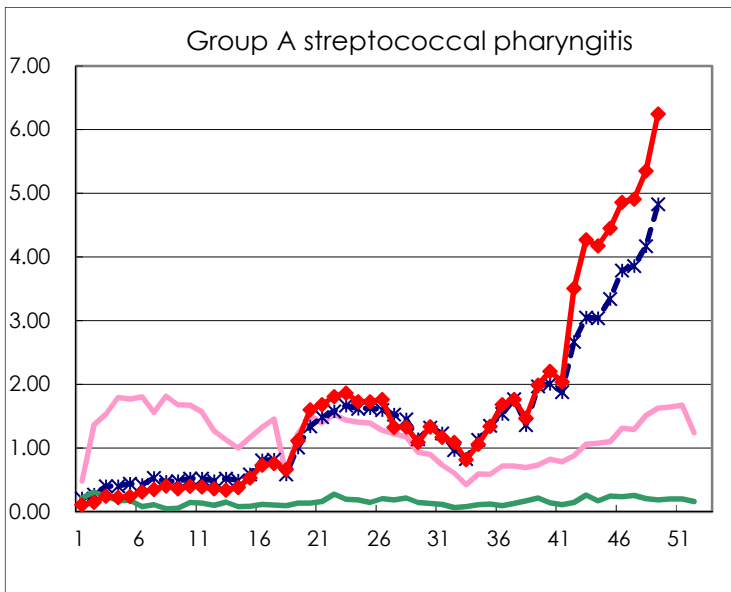
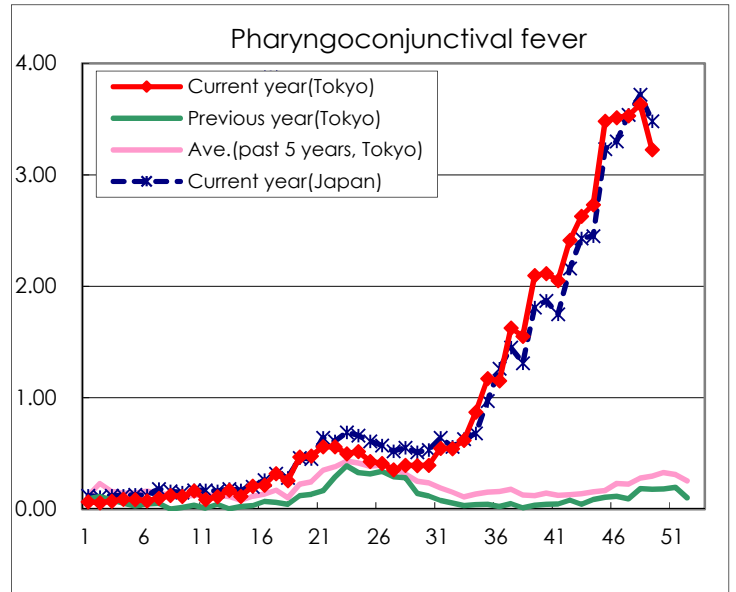
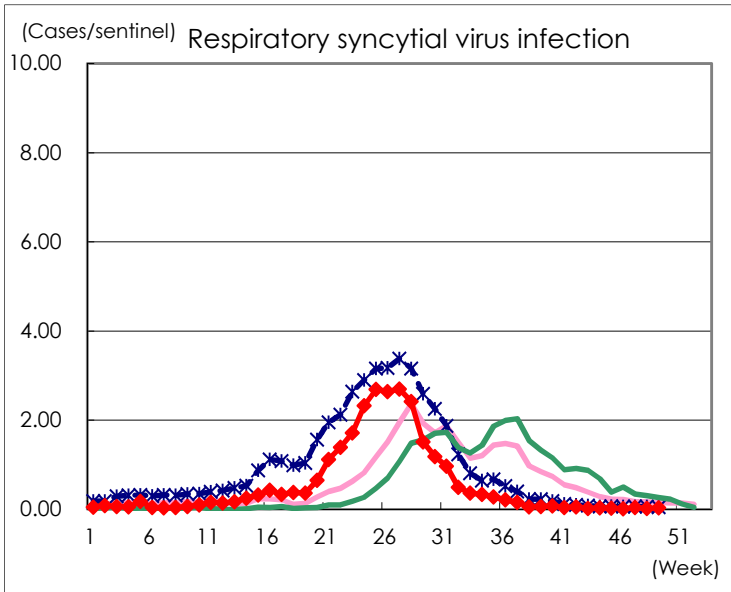
Category	Diseases	Tokyo					Japan	
		46th	47th	48th	49th	Cum 2023	49th	Cum 2023
V	Amebiasis	1	2	1	1	85	9	457
	Viral hepatitis(excluding hepatitis A and E)	1				42		226
	CRE infection	4	6	5	3	212	28	1,980
	Acute Flaccid Paralysis (excluding Acute poliomyelitis)					6		53
	Acute encephalitis(excluding JE and WNE)	1				37	14	581
	Cryptosporidiosis					1	1	12
	Creutzfeldt-Jakob disease	1	1			19	1	152
	Severe invasive streptococcal infections(TSLS)	4	7	6	5	127	21	837
	Acquired immunodeficiency syndrome (AIDS)	5	4	3	5	278	11	874
	Giardiasis					10		36
	Invasive <i>Haemophilus influenzae</i> disease		2		1	46	11	512
	Invasive meningococcal disease					3		16
	Invasive pneumococcal disease	5	4	8	3	194	50	1,757
	Varicella (limited to hospitalized case)	1	1	3	2	59	11	376
	Congenital rubella syndrome							
	Syphilis	75	44	76	80	3,492	192	14,088
	Disseminated cryptococcosis					16	1	158
	Tetanus				1	7	1	101
	Vancomycin-resistant <i>S. aureus</i> infection							
	Vancomycin-resistant <i>Enterococcus</i> infection					9	1	113
	Pertussis		2	1		110	29	952
Rubella					4		11	
Measles				2	9	2	27	
MDRA infection					3		14	

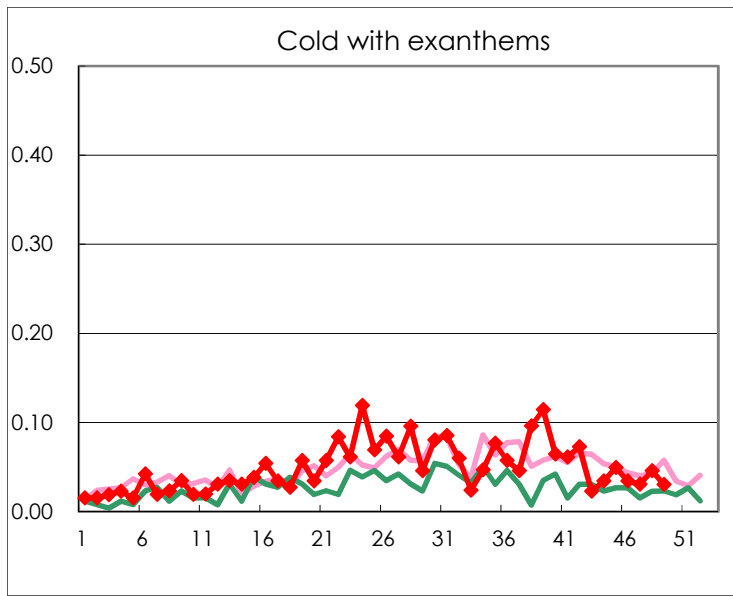
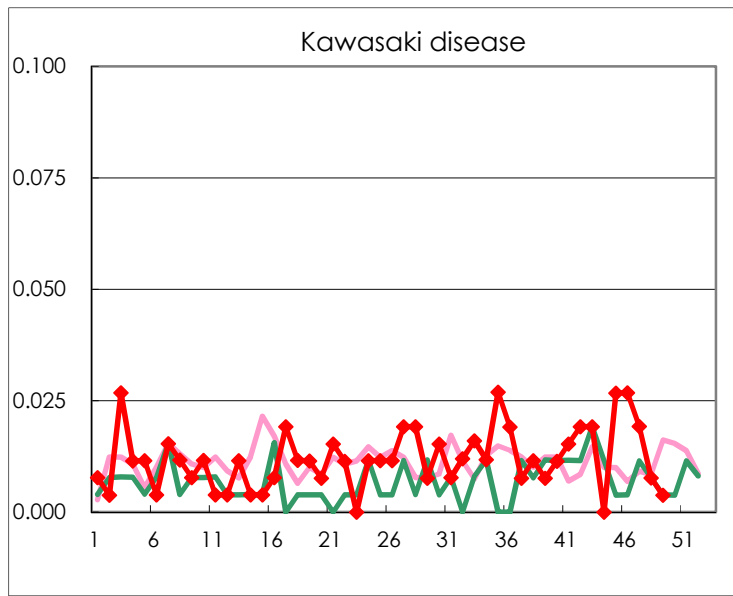
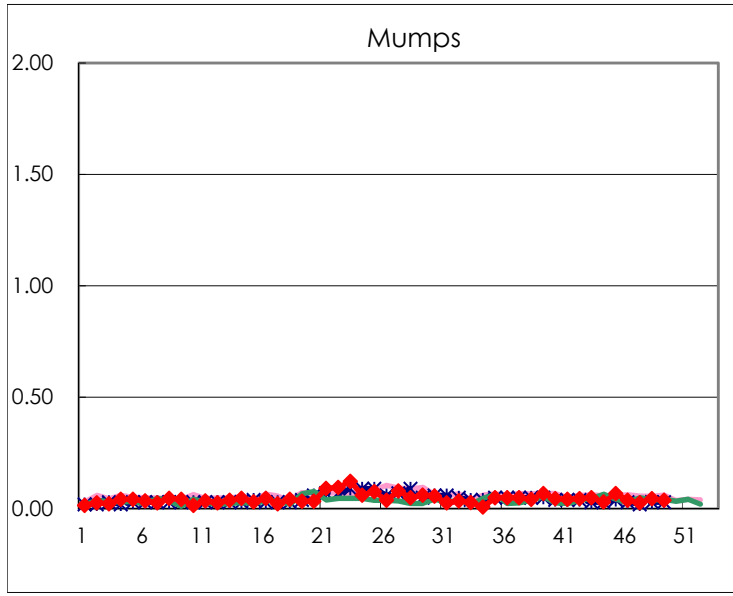
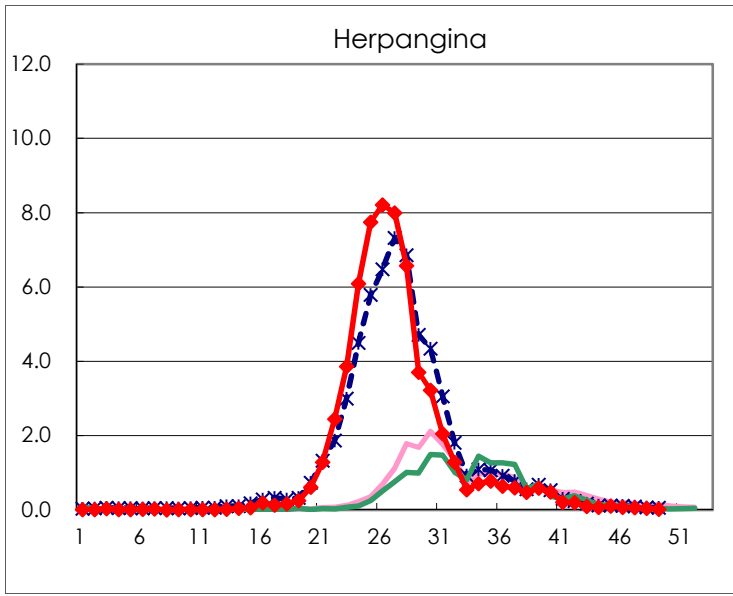
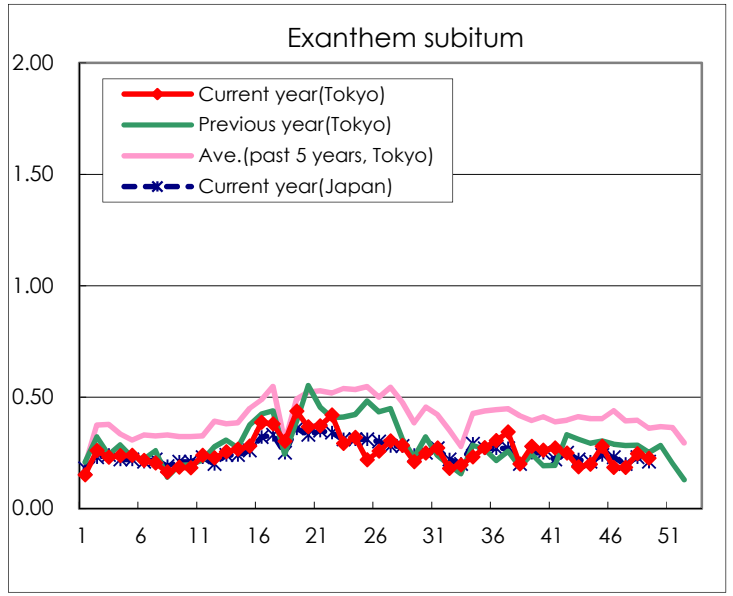
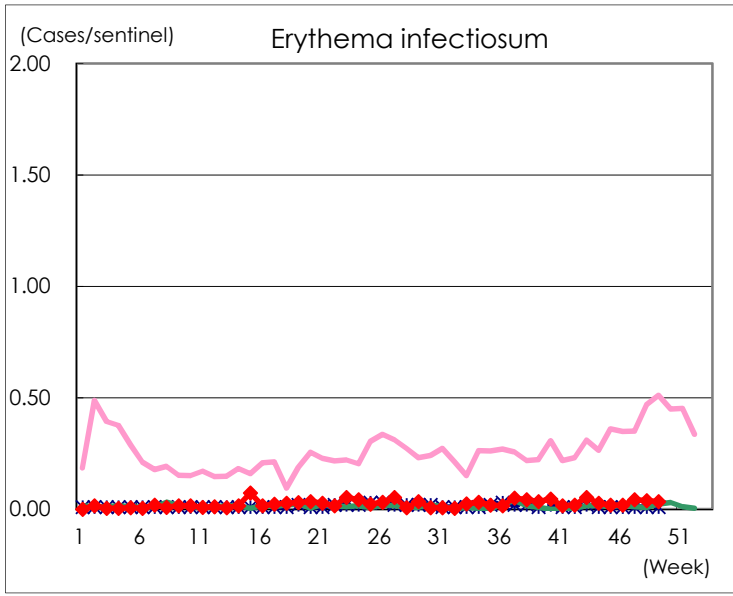
Number of patients with the diseases to be reported
by the designated clinics and hospitals

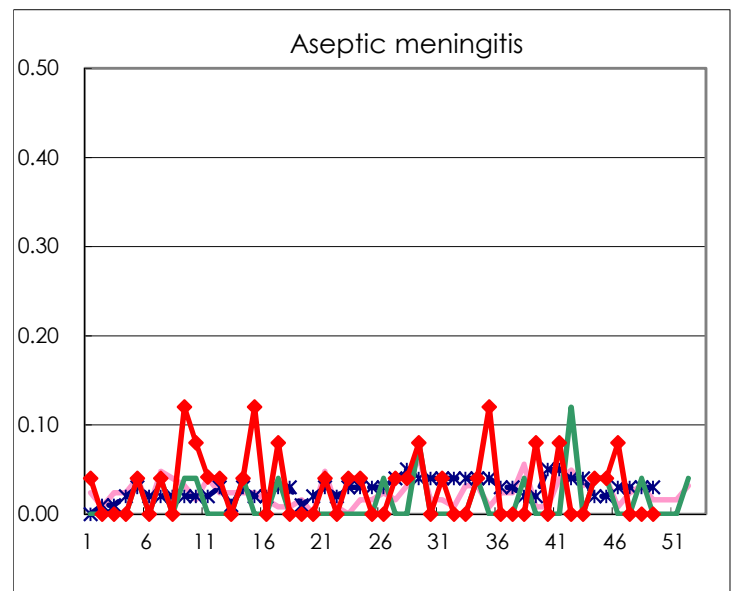
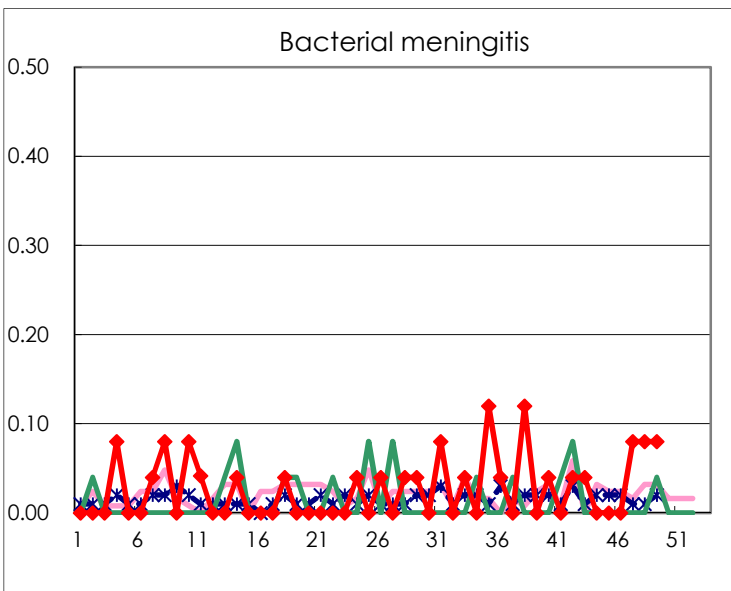
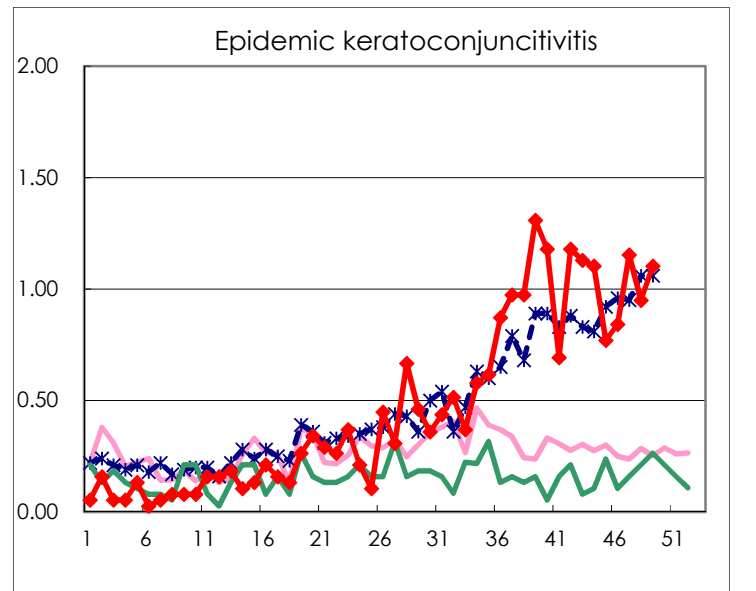
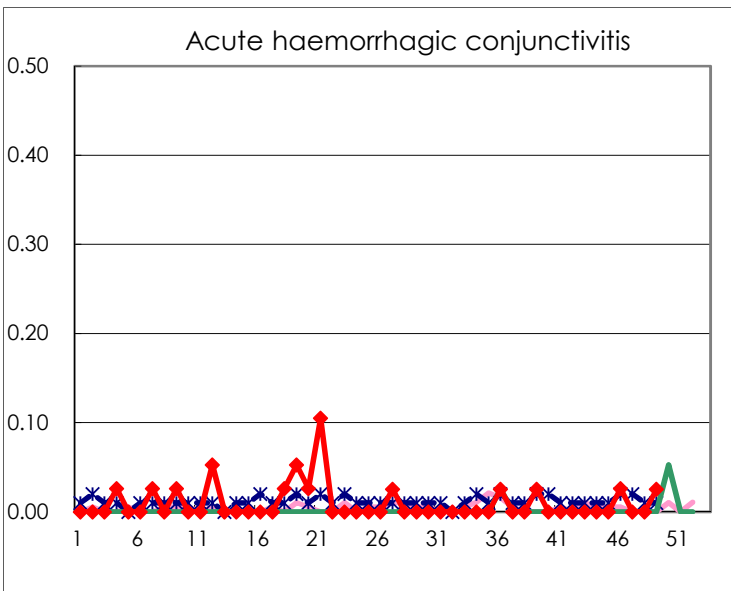
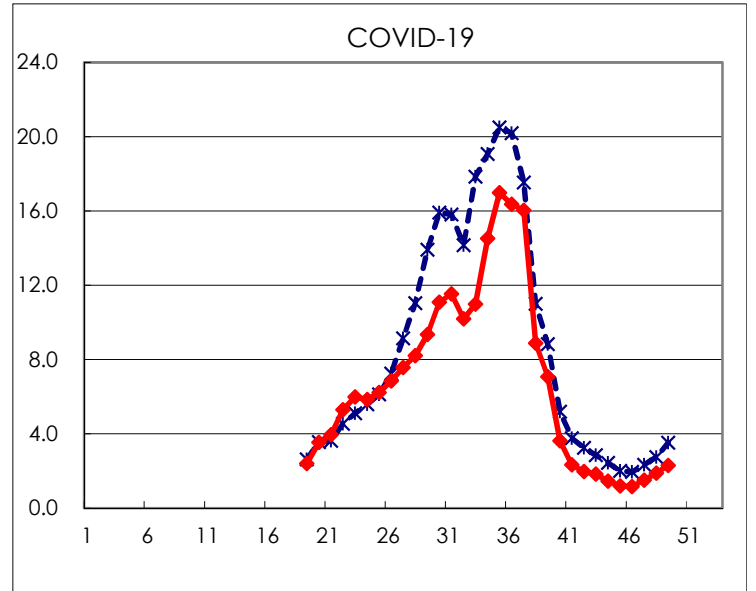
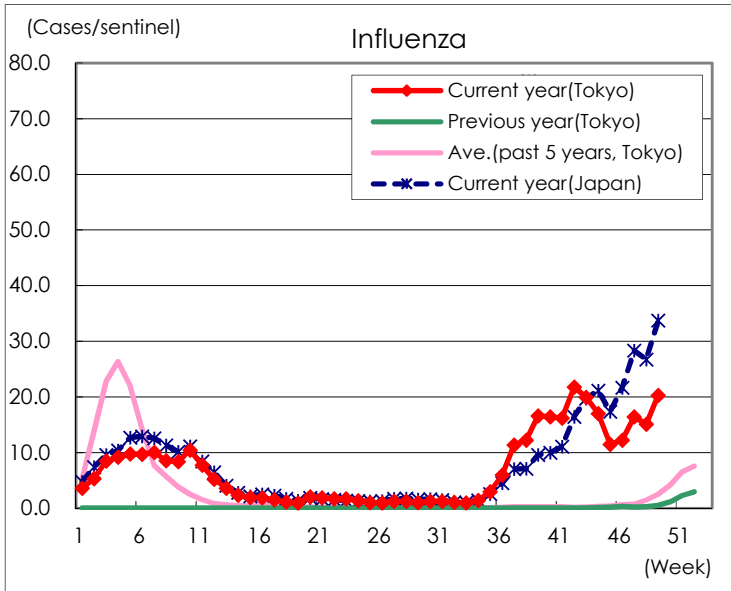
Diseases	Tokyo				
	46th	47th	48th	49th	/sentinel
Respiratory syncytial virus infection	3	10	5	8	0.03
Pharyngoconjunctival fever	917	918	948	842	3.23
Group A streptococcal pharyngitis	1,269	1,277	1,397	1,631	6.25
Infectious gastroenteritis	1,459	1,420	1,876	2,325	8.91
Chickenpox	62	35	57	43	0.16
Hand, foot, and mouth disease	192	162	118	111	0.43
Erythema infectiosum	5	11	10	9	0.03
Exanthem subitum	48	48	64	59	0.23
Herpangina	17	15	10	4	0.02
Mumps	10	7	12	10	0.04
Kawasaki disease	7	5	2	1	0.00
Cold with exanthems	9	8	12	8	0.03
Influenza	5,082	6,800	6,259	8,404	20.30
COVID-19	486	625	784	955	2.31
Acute hemorrhagic conjunctivitis	1			1	0.03
Epidemic keratoconjunctivitis	32	45	37	43	1.10
Bacterial meningitis		2	2	2	0.08
Aseptic meningitis	2				
Mycoplasma pneumonia	1		6	3	0.12
Chlamydial pneumonia (excluding psittacosis)	1				
Infectious gastroenteritis (only by Rotavirus)			1	1	0.04
Influenza-Associated Hospitalizations	40	40	39	48	1.92
COVID-19-Associated Hospitalizations	53	60	56	61	2.44

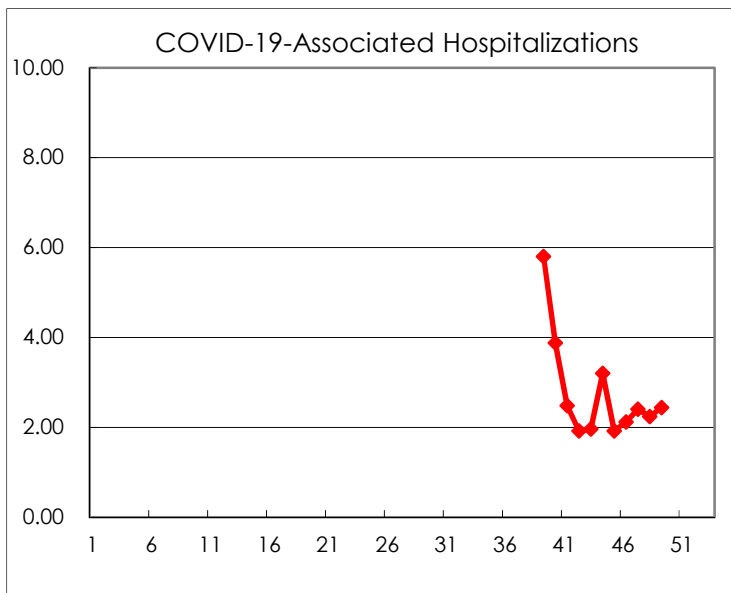
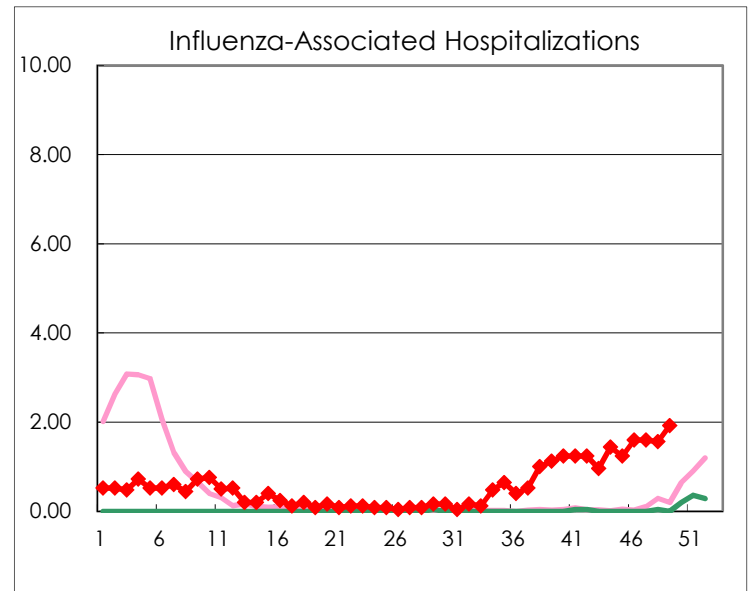
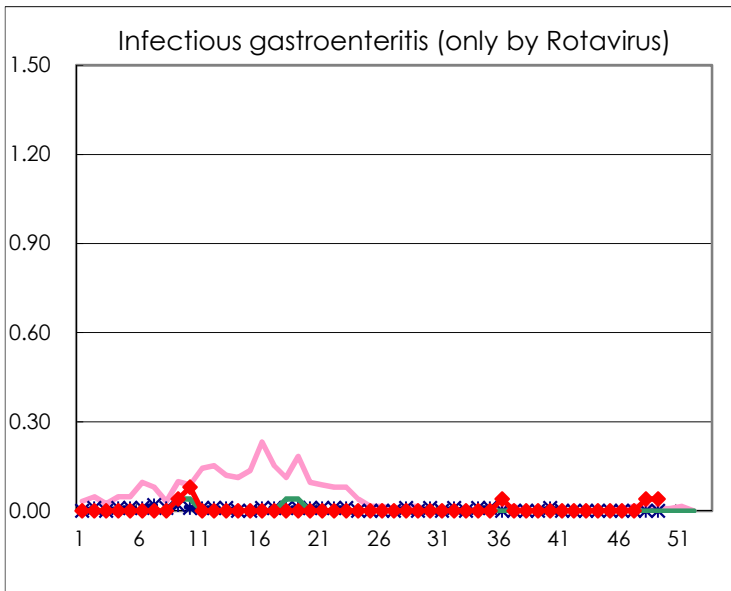
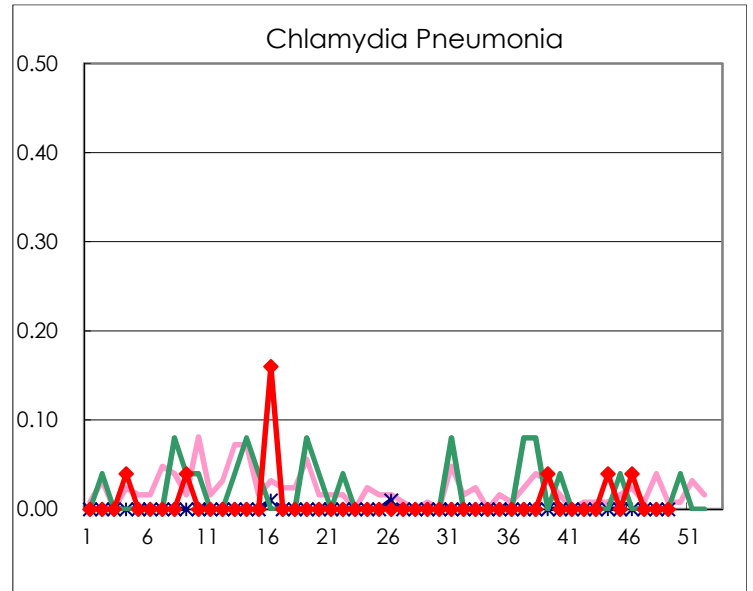
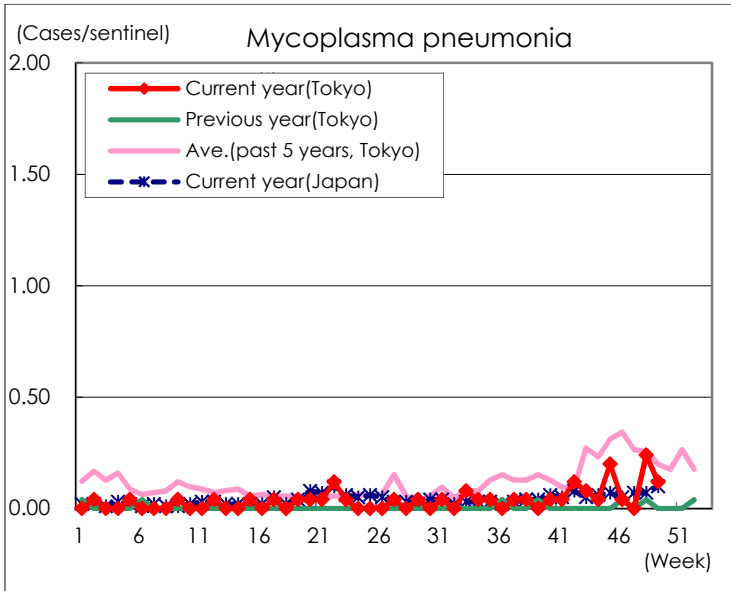
(Blank means 0.)

Disease Trend Graph (weekly reported cases per sentinel in comparison)









Number of sentinel facilities for weekly reporting		
Types of sentinels	Number of sentinels	Sentinels having reported
Pediatric	264	261
Influenza COVID-19	419	414
Ophthalmic	39	39
Specially-designated	25	25