

---

INFECTIOUS DISEASES WEEKLY REPORT

# TOKYO IDWR

Tokyo Metropolitan Infectious Disease Surveillance Center

## 21 December 2023 / Number 50 ( 12/11 ~ 12/17 )

### Surveillance System in Tokyo, Japan

The infectious diseases which all physicians must report  
All physicians must report to health centers the incidence of the diseases which are shown at page one. Health centers electronically report the individual cases to Tokyo Metropolitan Infectious Disease Surveillance Center.

The infectious diseases required to be reported by the sentinels  
The numbers of patients who visit the sentinel clinics or hospitals during a week are reported to health centers in Tokyo. And they electronically report the numbers to Tokyo Metropolitan Infectious Disease Surveillance Center. We have about 500 sentinel clinics and hospitals in Tokyo.

Tokyo Metropolitan Institute of Public Health

TEL:81-3-3363-3213 FAX:81-3-5332-7365

e-mail:tmiph@section.metro.tokyo.jp

URL:idsc.tmiph.metro.tokyo.lg.jp/

---

Number of patients with the diseases which all physicians must report

Category	Diseases	Tokyo					Japan	
		47th	48th	49th	50th	Cum 2023	50th	Cum 2023
I	Ebola hemorrhagic fever							
	Crimean-Congo hemorrhagic fever							
	Smallpox							
	South American hemorrhagic fever							
	Plague							
	Marburg disease							
	Lassa fever							
II	Acute poliomyelitis							
	Tuberculosis	26	54	45	36	1,943	268	14,098
	Diphtheria							
	Severe Acute Respiratory Syndrome(SARS)							
	Middle East Respiratory Syndrome (MERS)							
	Avian influenza H5N1							
	Avian influenza H7N9							
III	Cholera					2		2
	Shigellosis					9	1	45
	Enterohemorrhagic Escherichia coli infection	5	8	8	10	430	40	3,736
	Typhoid fever					8		37
	Paratyphoid fever					3		9
IV	Hepatitis E	1	4	3	5	158	11	523
	West Nile fever							
	Hepatitis A				1	13	2	52
	Echinococcosis							13
	Mpox	1	2	1	3	167	2	224
	Yellow fever							
	Psittacosis							8
	Omsk hemorrhagic fever							
	Relapsing fever						1	23
	Kyasanur forest disease							
	Q fever							
	Rabies							
	Coccidioidomycosis							4
	Zika virus infection						1	2
	Severe Fever with Thrombocytopenia Syndrome							131
	Hemorrhagic fever with renal syndrome							
	Western equine encephalitis							
	Tick-borne encephalitis							
	Anthrax							
	Chikungunya fever					1		7
	Scrub typhus(Tsutsugamushi disease)	1		1	1	10	34	390
	Dengue fever	1				44	1	167
	Eastern equine encephalitis							
	Avian influenza (excluding H5N1 and H7N9)							
	Nipah virus infection							
	Japanese spotted fever					1		502
	Japanese encephalitis							6
	Hantavirus pulmonary syndrome							
	Herpes B virus infection							
	Glanders							
	Brucellosis					1		2
	Venezuelan equine encephalitis							
	Hendra virus infection							
Epidemic typhus								
Botulism								
Malaria	1		2	1	14	1	35	
Tularemia								
Lyme disease					1		29	
Lyssavirus infection(excluding rabies)								
Rift valley fever								
Melioidosis								
Legionellosis	4	1	3	3	161	35	2,200	
Leptospirosis					5		49	
Rocky mountain spotted fever								

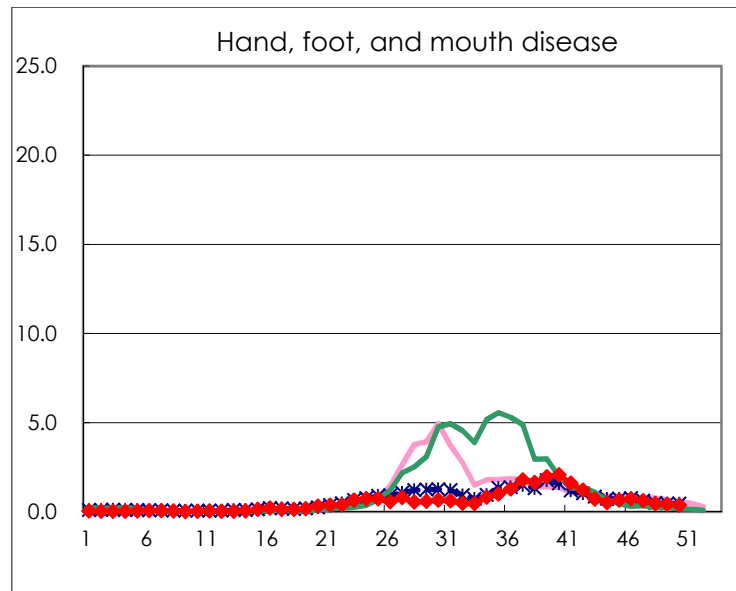
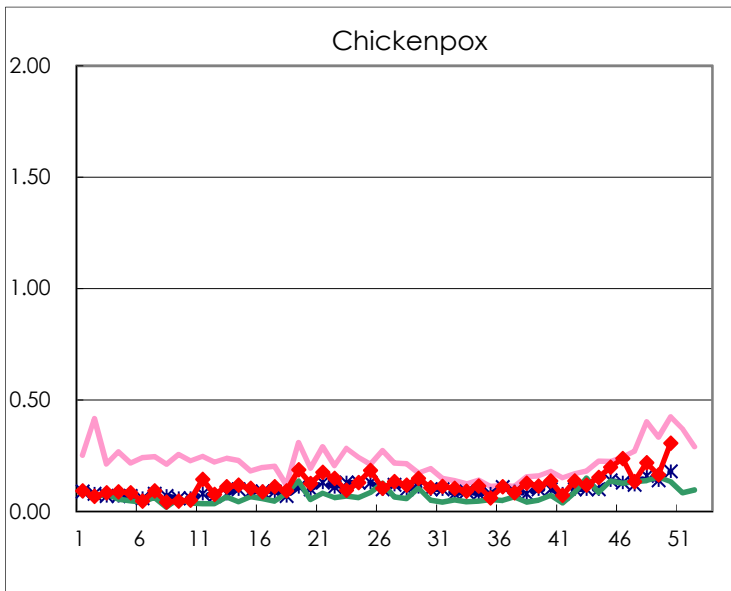
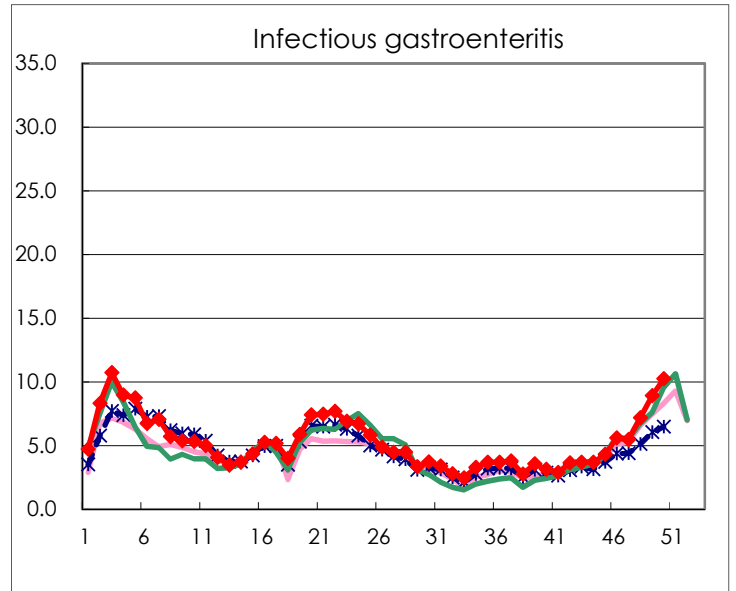
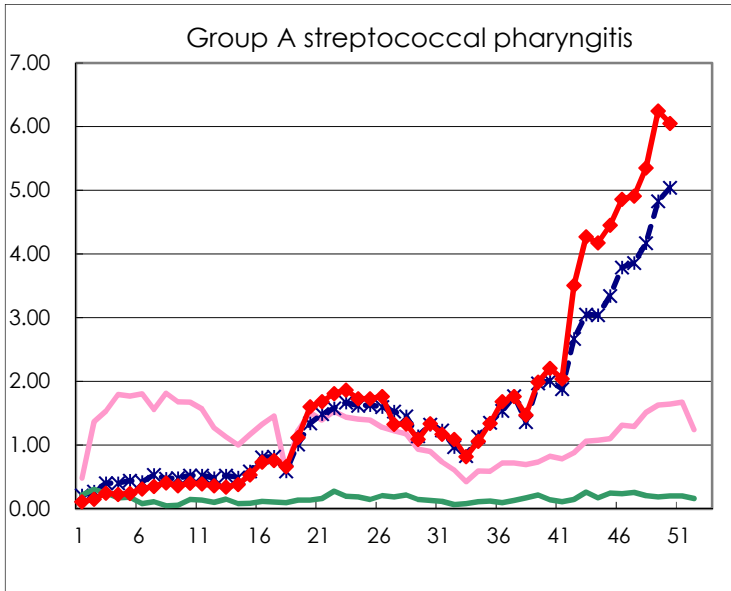
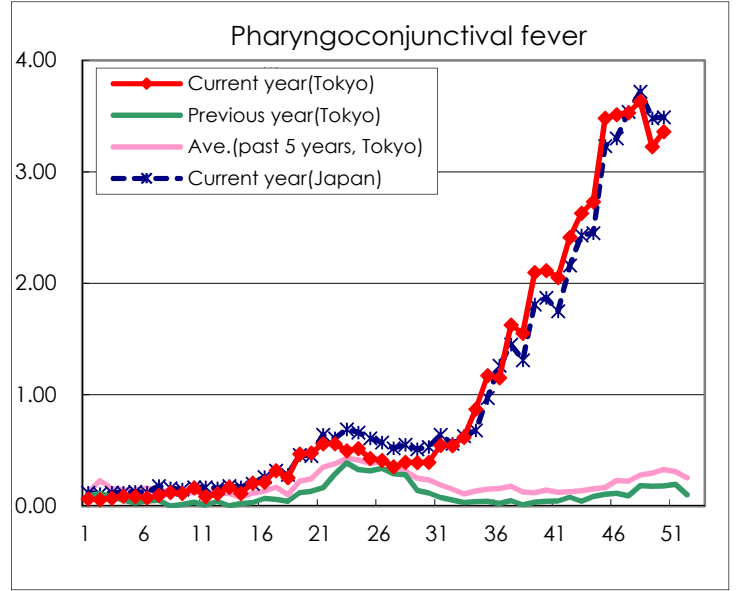
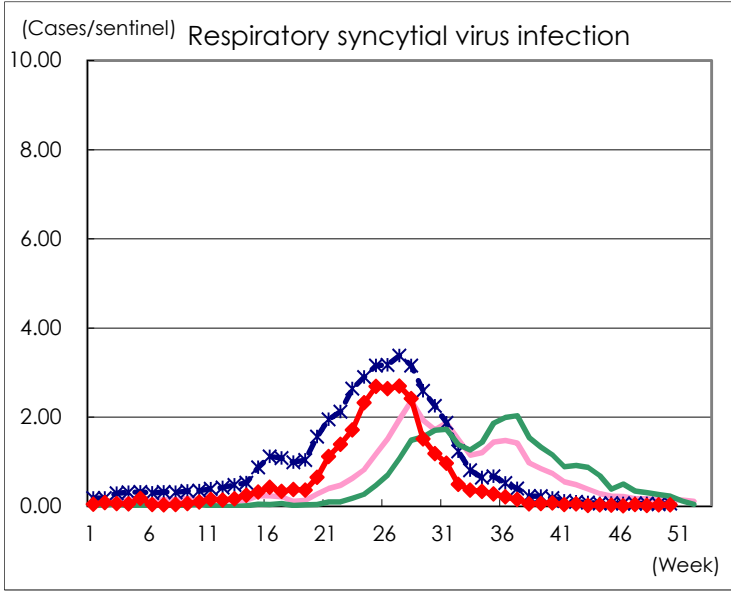
Category	Diseases	Tokyo					Japan	
		47th	48th	49th	50th	Cum 2023	50th	Cum 2023
V	Amebiasis	2	1	1	3	88	10	468
	Viral hepatitis(excluding hepatitis A and E)				1	43	3	232
	CRE infection	6	5	3	4	216	28	2,022
	Acute Flaccid Paralysis (excluding Acute poliomyelitis)					6		53
	Acute encephalitis(excluding JE and WNE)				3	41	12	601
	Cryptosporidiosis					1		12
	Creutzfeldt-Jakob disease	1				19	2	157
	Severe invasive streptococcal infections(TSLS)	7	6	6	4	132	23	874
	Acquired immunodeficiency syndrome (AIDS)	4	3	5	9	287	16	898
	Giardiasis				1	11	1	37
	Invasive <i>Haemophilus influenzae</i> disease	2		1	2	48	11	529
	Invasive meningococcal disease				1	4	3	20
	Invasive pneumococcal disease	4	10	5	8	206	45	1,824
	Varicella (limited to hospitalized case)	1	3	2		59	5	386
	Congenital rubella syndrome							
	Syphilis	44	76	82	79	3,573	207	14,401
	Disseminated cryptococcosis				1	17	6	166
	Tetanus			1		7	1	103
	Vancomycin-resistant <i>S. aureus</i> infection							
	Vancomycin-resistant <i>Enterococcus</i> infection					9	2	116
	Pertussis	2	1		4	114	19	974
Rubella					4	1	12	
Measles			2	1	10	1	28	
MDRA infection					3	1	15	

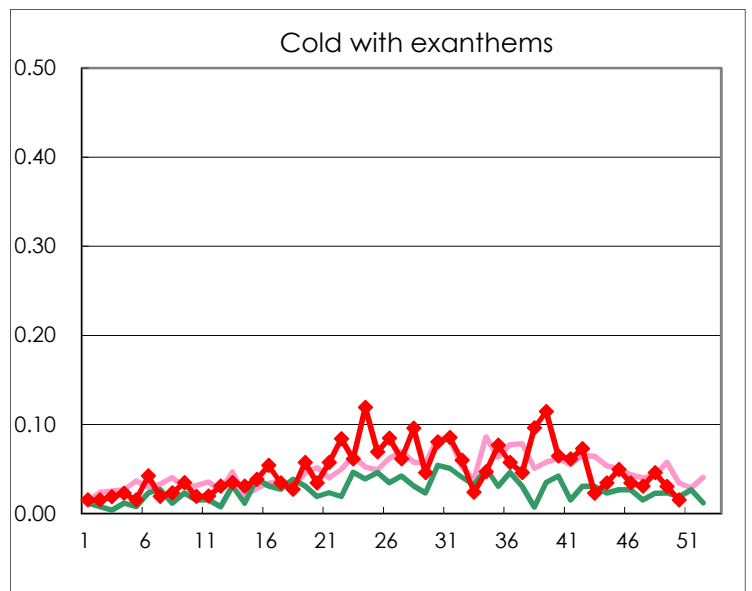
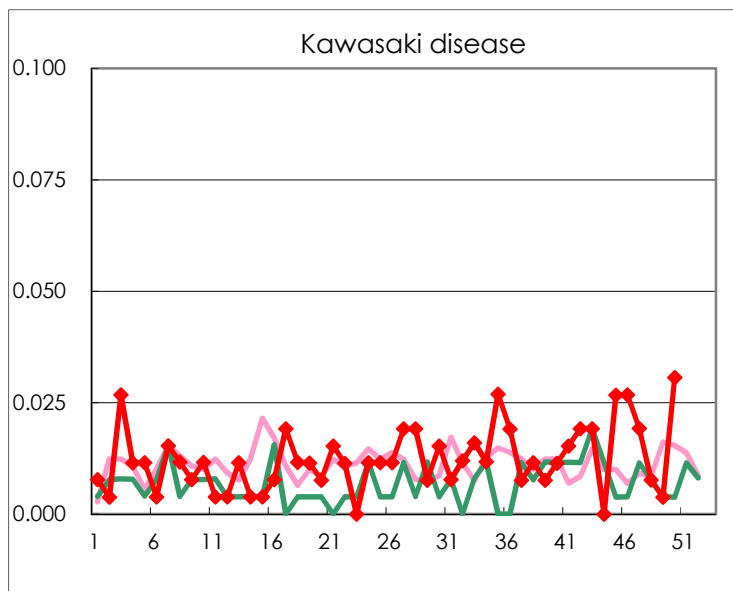
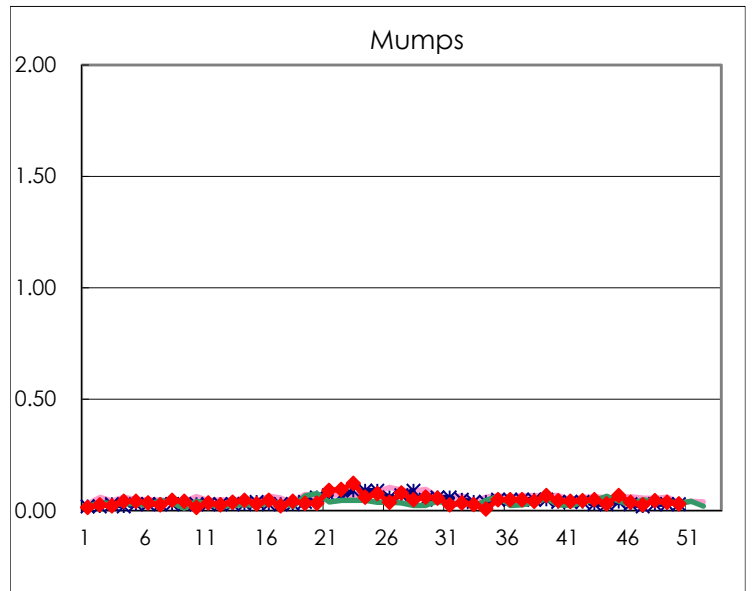
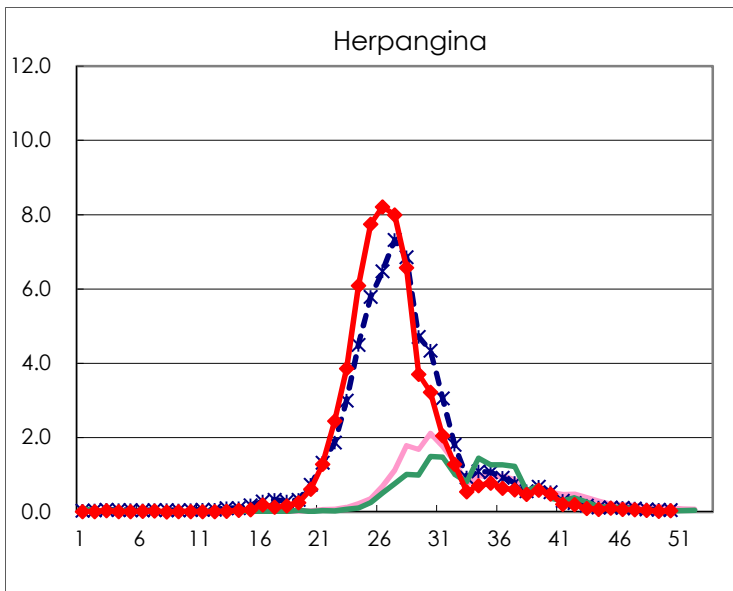
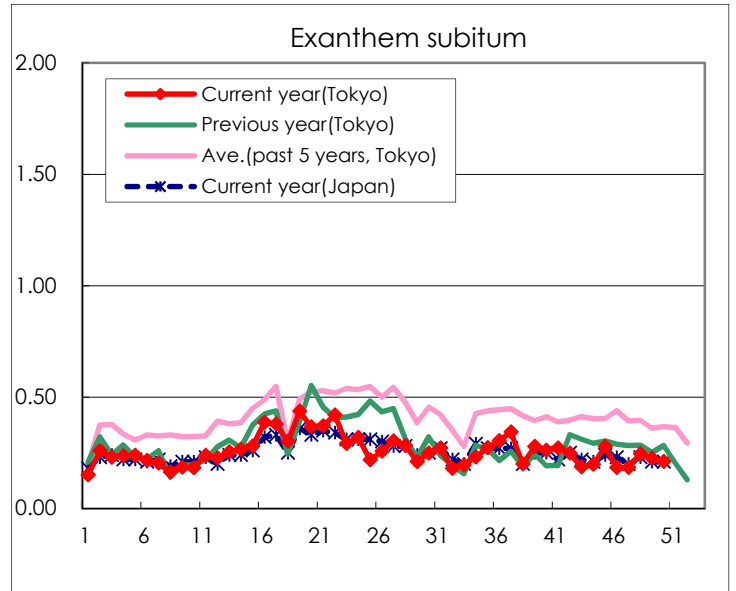
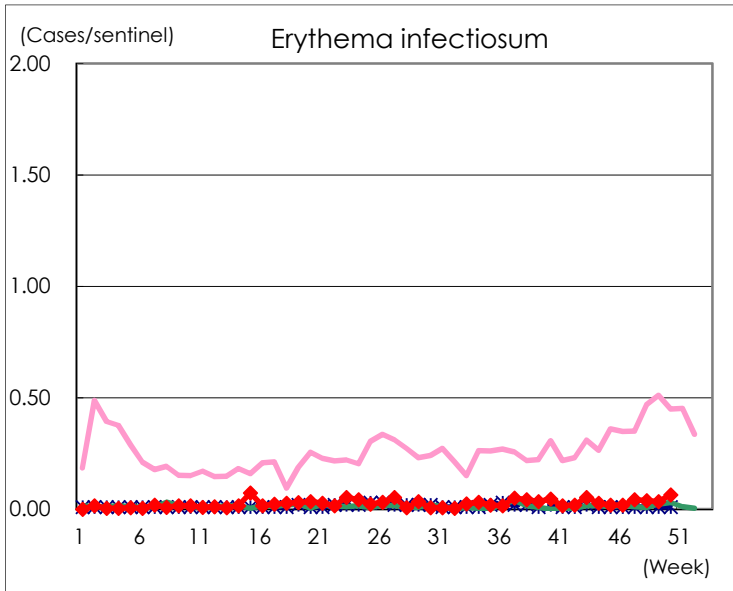
Number of patients with the diseases to be reported  
by the designated clinics and hospitals

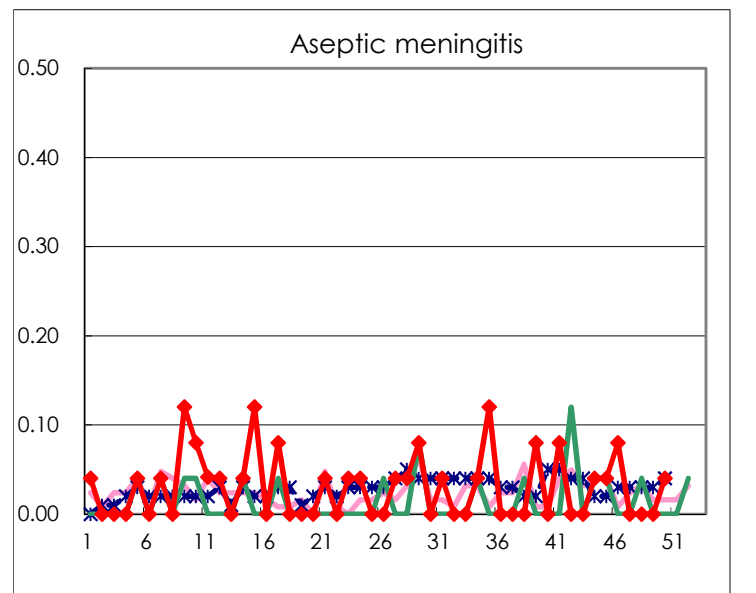
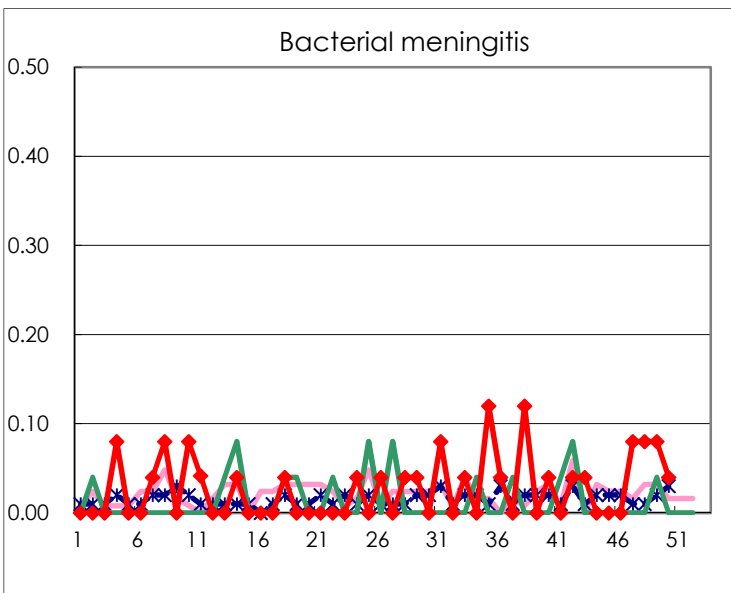
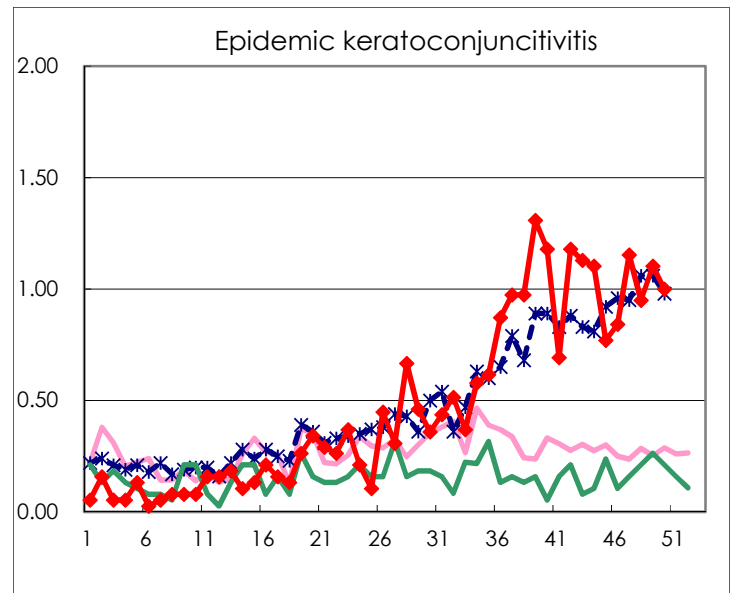
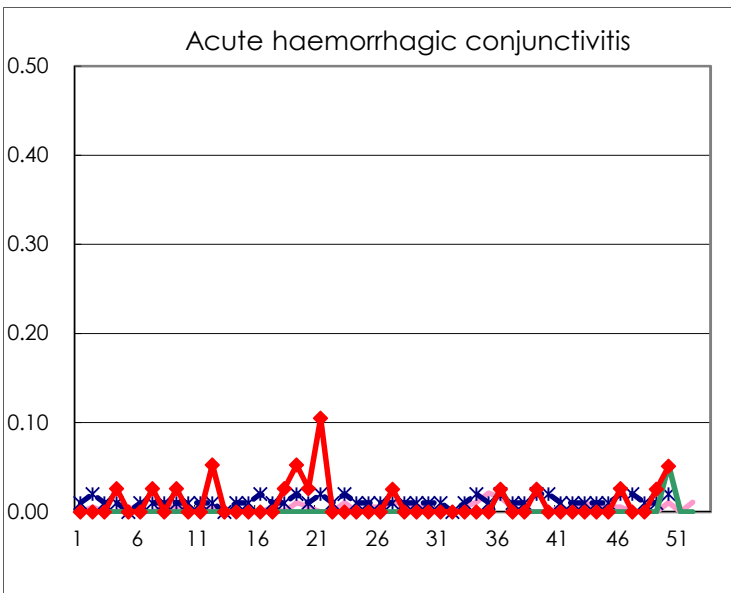
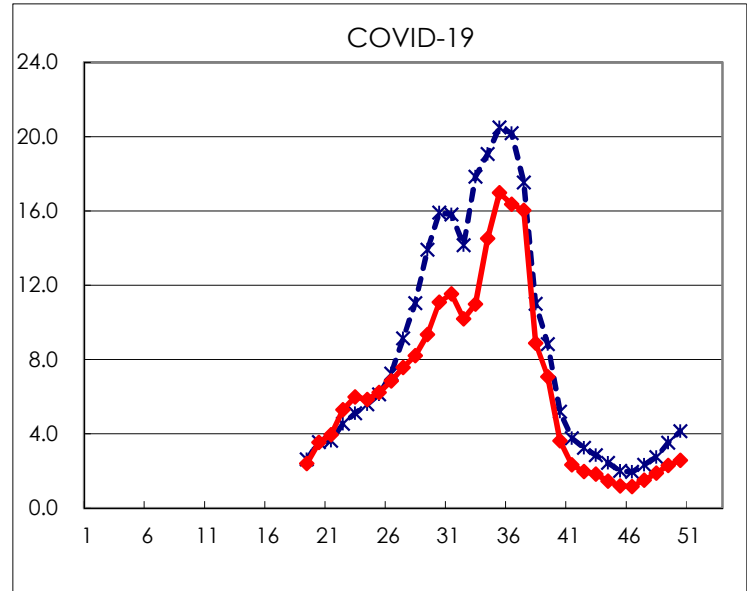
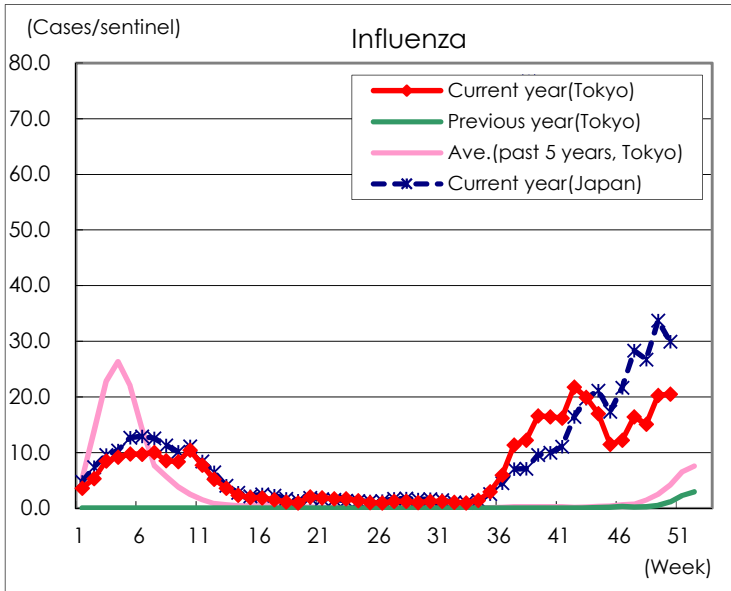
Diseases	Tokyo				
	47th	48th	49th	50th	/sentinel
Respiratory syncytial virus infection	10	5	8	8	0.03
Pharyngoconjunctival fever	918	948	842	877	3.36
Group A streptococcal pharyngitis	1,277	1,397	1,631	1,579	6.05
Infectious gastroenteritis	1,420	1,876	2,325	2,676	10.25
Chickenpox	35	57	43	80	0.31
Hand, foot, and mouth disease	162	118	111	97	0.37
Erythema infectiosum	11	10	9	17	0.07
Exanthem subitum	48	64	59	55	0.21
Herpangina	15	10	4	9	0.03
Mumps	7	12	10	8	0.03
Kawasaki disease	5	2	1	8	0.03
Cold with exanthems	8	12	8	4	0.02
Influenza	6,800	6,259	8,405	8,477	20.48
COVID-19	625	784	955	1,069	2.58
Acute hemorrhagic conjunctivitis			1	2	0.05
Epidemic keratoconjunctivitis	45	37	43	39	1.00
Bacterial meningitis	2	2	2	1	0.04
Aseptic meningitis				1	0.04
Mycoplasma pneumonia		6	3	2	0.08
Chlamydial pneumonia (excluding psittacosis)					
Infectious gastroenteritis (only by Rotavirus)		1	1		
Influenza-Associated Hospitalizations	40	39	48	56	2.24
COVID-19-Associated Hospitalizations	60	56	61	68	2.72

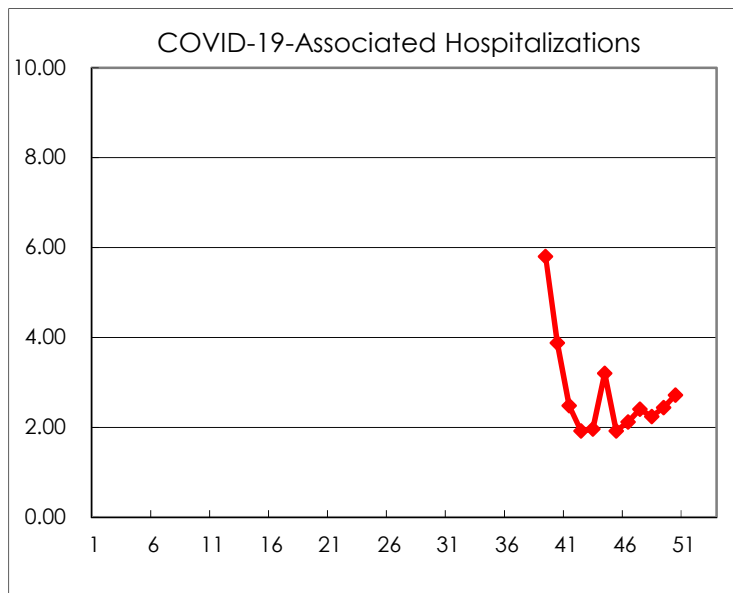
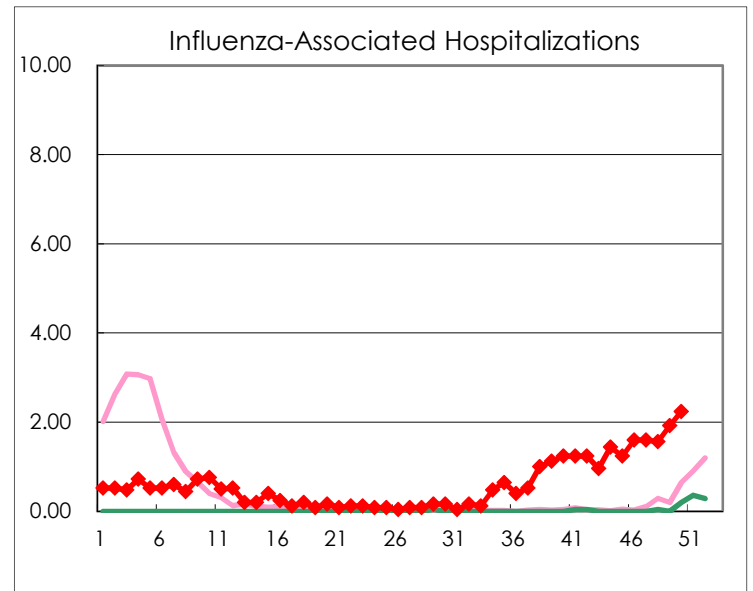
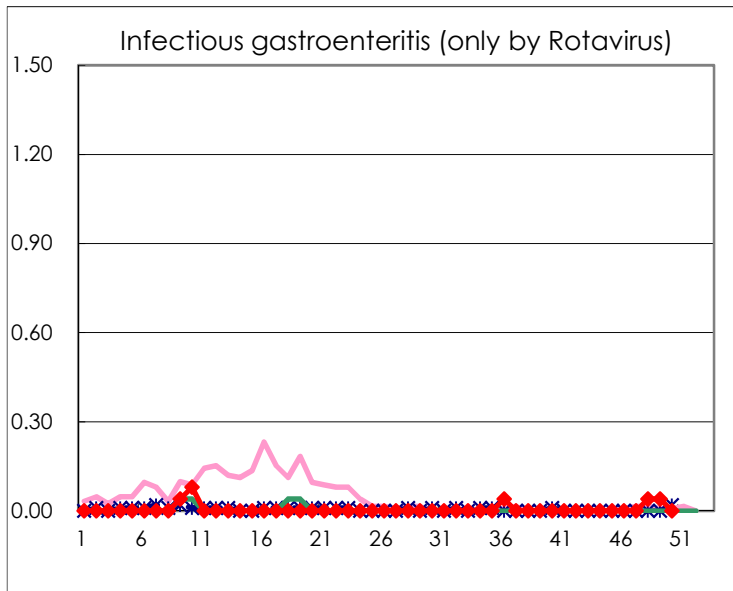
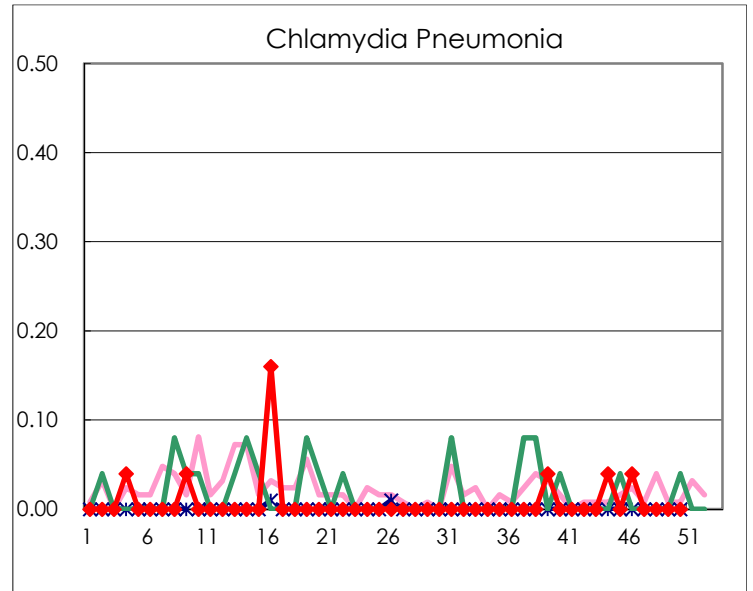
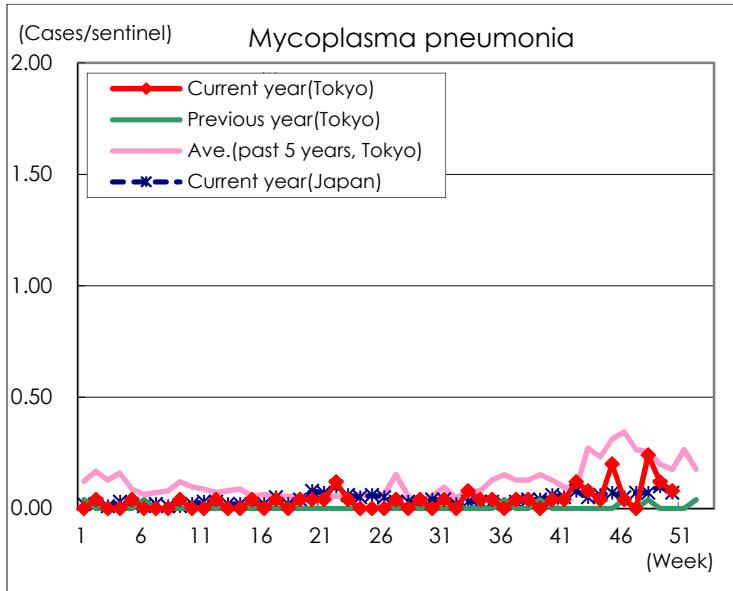
( Blank means 0. )

# Disease Trend Graph (weekly reported cases per sentinel in comparison)









Number of sentinel facilities for weekly reporting		
Types of sentinels	Number of sentinels	Sentinels having reported
Pediatric	264	261
Influenza COVID-19	419	414
Ophthalmic	39	39
Specially-designated	25	25