

---

INFECTIOUS DISEASES WEEKLY REPORT

# TOKYO IDWR

Tokyo Metropolitan Infectious Disease Surveillance Center

## 28 December 2023 / Number 51 ( 12/18 ~ 12/24 )

### Surveillance System in Tokyo, Japan

The infectious diseases which all physicians must report  
All physicians must report to health centers the incidence of the diseases which are shown at page one. Health centers electronically report the individual cases to Tokyo Metropolitan Infectious Disease Surveillance Center.

The infectious diseases required to be reported by the sentinels  
The numbers of patients who visit the sentinel clinics or hospitals during a week are reported to health centers in Tokyo. And they electronically report the numbers to Tokyo Metropolitan Infectious Disease Surveillance Center. We have about 500 sentinel clinics and hospitals in Tokyo.

Tokyo Metropolitan Institute of Public Health

TEL:81-3-3363-3213 FAX:81-3-5332-7365

e-mail:tmiph@section.metro.tokyo.jp

URL:idsc.tmiph.metro.tokyo.lg.jp/

---

Number of patients with the diseases which all physicians must report

Category	Diseases	Tokyo					Japan	
		48th	49th	50th	51st	Cum 2023	51st	Cum 2023
I	Ebola hemorrhagic fever							
	Crimean-Congo hemorrhagic fever							
	Smallpox							
	South American hemorrhagic fever							
	Plague							
	Marburg disease							
	Lassa fever							
II	Acute poliomyelitis							
	Tuberculosis	54	45	36	48	1,990	271	14,407
	Diphtheria							
	Severe Acute Respiratory Syndrome(SARS)							
	Middle East Respiratory Syndrome (MERS)							
	Avian influenza H5N1							
	Avian influenza H7N9							
III	Cholera					2		2
	Shigellosis					9	1	46
	Enterohemorrhagic Escherichia coli infection	8	8	10	6	436	42	3,787
	Typhoid fever					8		37
	Paratyphoid fever					3		9
IV	Hepatitis E	4	3	5	1	159	9	532
	West Nile fever							
	Hepatitis A			1		13	2	54
	Echinococcosis							13
	Mpox	2	1	3		167		224
	Yellow fever							
	Psittacosis							8
	Omsk hemorrhagic fever							
	Relapsing fever							23
	Kyasanur forest disease							
	Q fever						1	1
	Rabies							
	Coccidioidomycosis							4
	Zika virus infection							2
	Severe Fever with Thrombocytopenia Syndrome							131
	Hemorrhagic fever with renal syndrome							
	Western equine encephalitis							
	Tick-borne encephalitis							
	Anthrax							
	Chikungunya fever					1		7
	Scrub typhus(Tsutsugamushi disease)		1	1		10	20	412
	Dengue fever					44	5	172
	Eastern equine encephalitis							
	Avian influenza (excluding H5N1 and H7N9)							
	Nipah virus infection							
	Japanese spotted fever					1		501
	Japanese encephalitis							6
	Hantavirus pulmonary syndrome							
	Herpes B virus infection							
	Glanders							
	Brucellosis					1		2
	Venezuelan equine encephalitis							
	Hendra virus infection							
Epidemic typhus								
Botulism								
Malaria		2	1		14		35	
Tularemia								
Lyme disease					1		29	
Lyssavirus infection(excluding rabies)								
Rift valley fever								
Melioidosis								
Legionellosis	1	4	3	6	168	36	2,240	
Leptospirosis					5		49	
Rocky mountain spotted fever								

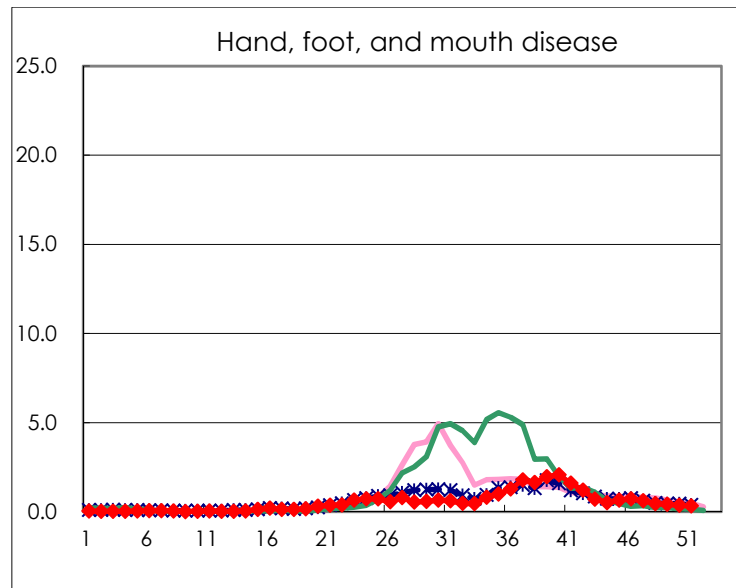
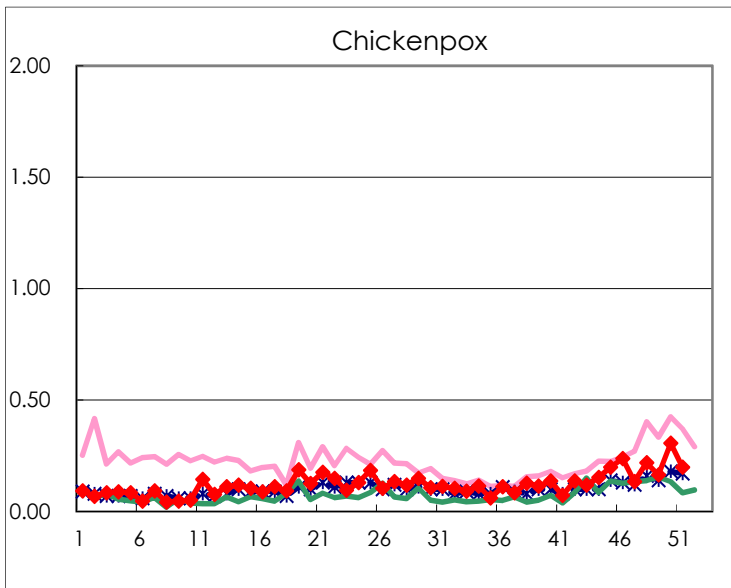
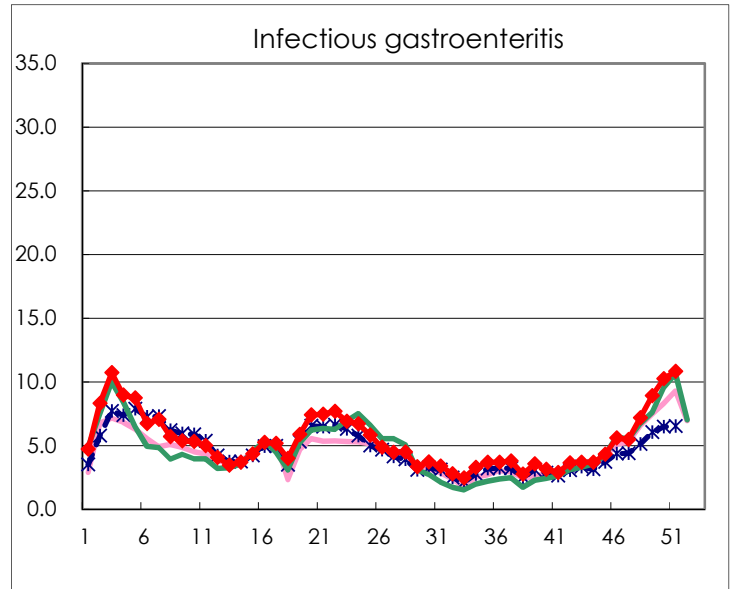
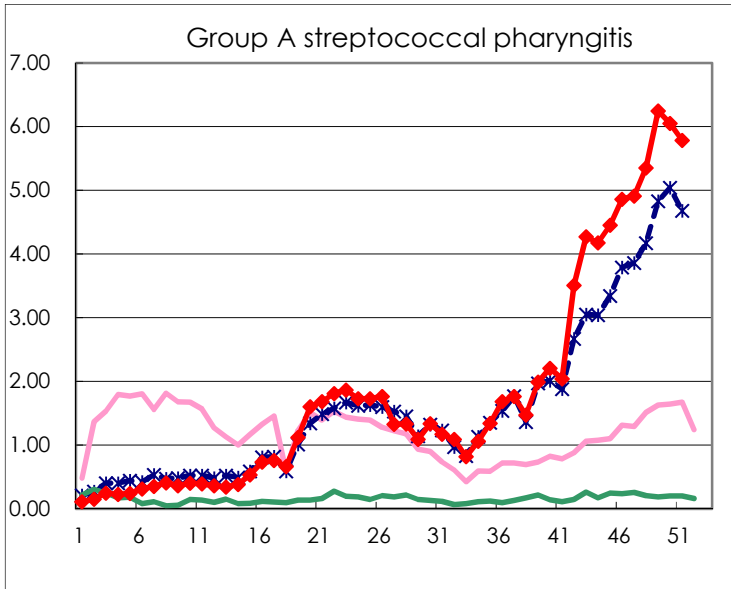
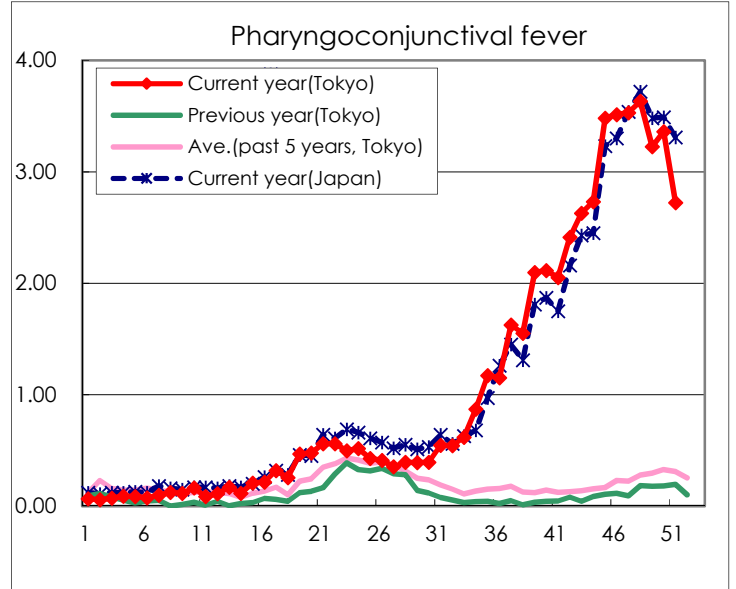
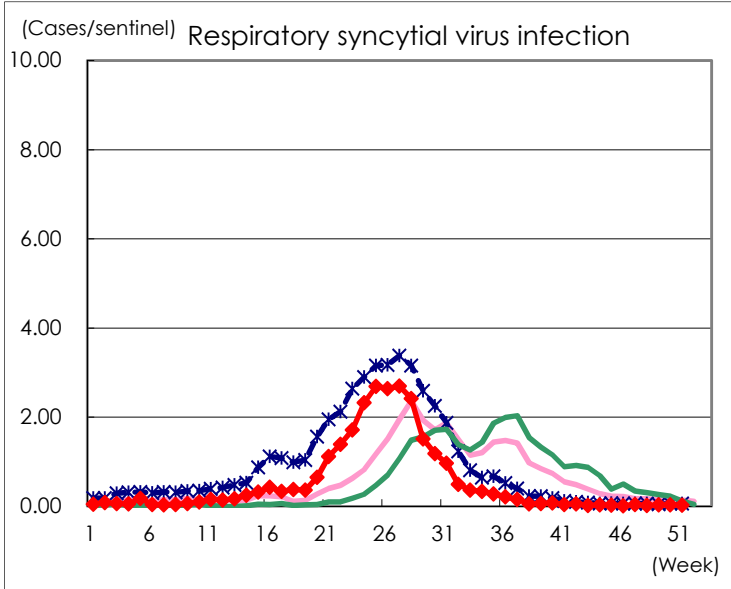
Category	Diseases	Tokyo					Japan	
		48th	49th	50th	51st	Cum 2023	51st	Cum 2023
V	Amebiasis	1	1	3		88	8	479
	Viral hepatitis(excluding hepatitis A and E)			1		43	6	239
	CRE infection	5	3	4	9	225	29	2,065
	Acute Flaccid Paralysis (excluding Acute poliomyelitis)					6	1	56
	Acute encephalitis(excluding JE and WNE)			3	1	42	12	624
	Cryptosporidiosis					1		14
	Creutzfeldt-Jakob disease					19	1	159
	Severe invasive streptococcal infections(TSLS)	6	6	4	7	139	27	908
	Acquired immunodeficiency syndrome (AIDS)	3	5	9	9	296	14	922
	Giardiasis			1		11		38
	Invasive <i>Haemophilus influenzae</i> disease		1	3	1	50	11	544
	Invasive meningococcal disease			1		4	1	21
	Invasive pneumococcal disease	10	6	8	8	215	48	1,893
	Varicella (limited to hospitalized case)	3	2			59	7	394
	Congenital rubella syndrome							
	Syphilis	76	82	79	62	3,635	184	14,661
	Disseminated cryptococcosis			1		17	1	168
	Tetanus		1			7	1	106
	Vancomycin-resistant <i>S. aureus</i> infection							
	Vancomycin-resistant <i>Enterococcus</i> infection					9	3	113
	Pertussis	1		4	1	115	20	995
Rubella					4		12	
Measles		2	1		10		28	
MDRA infection					3		15	

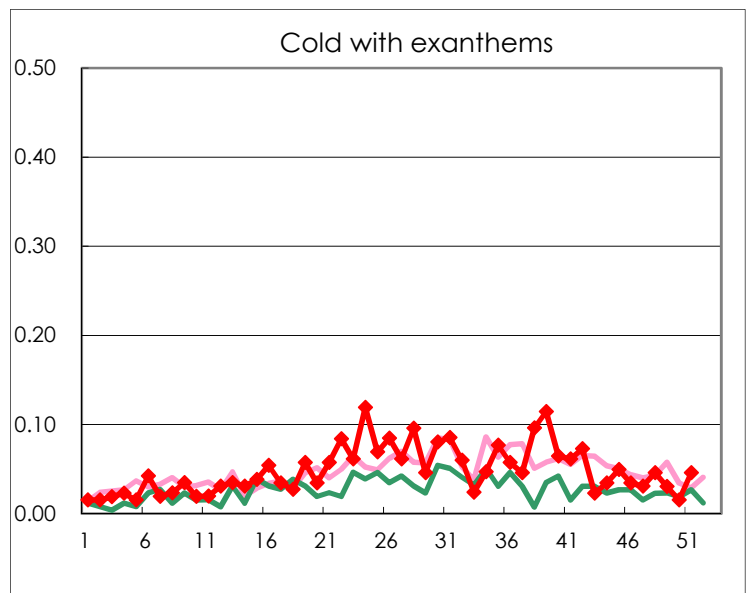
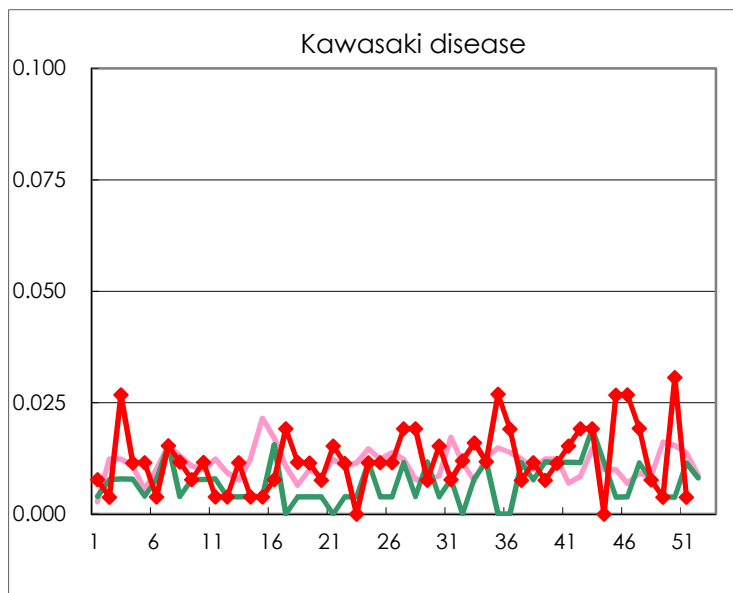
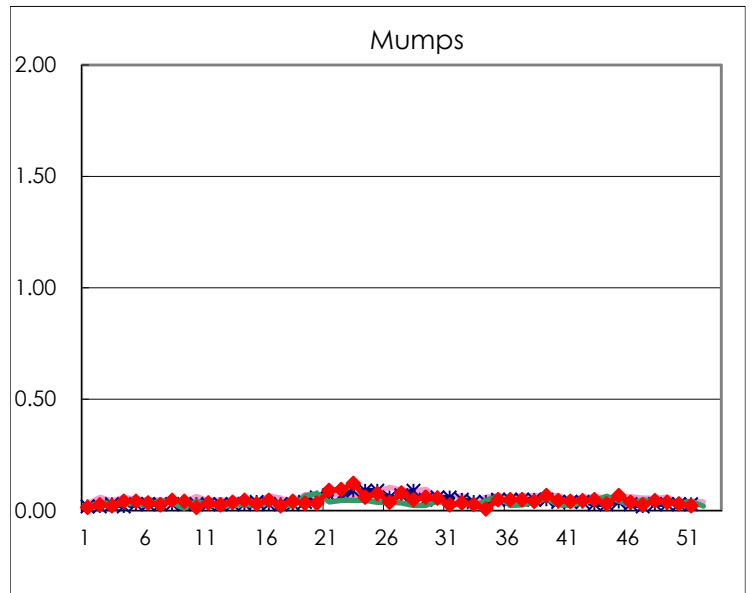
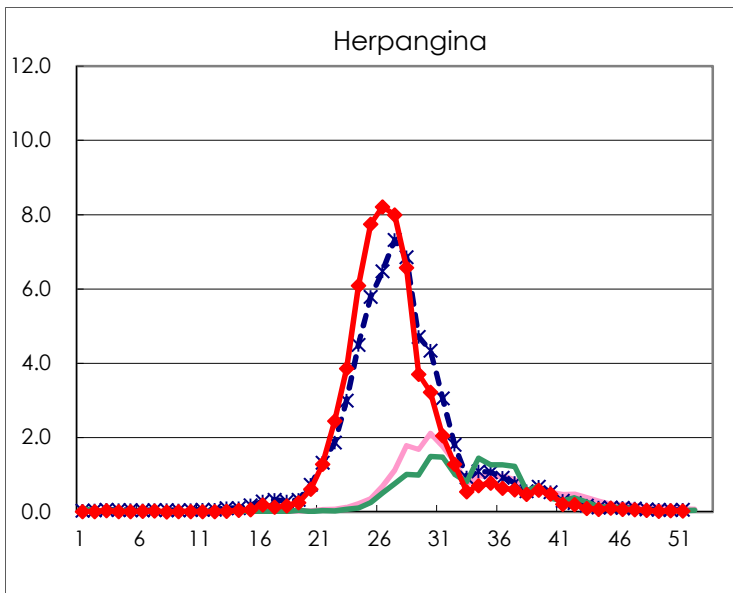
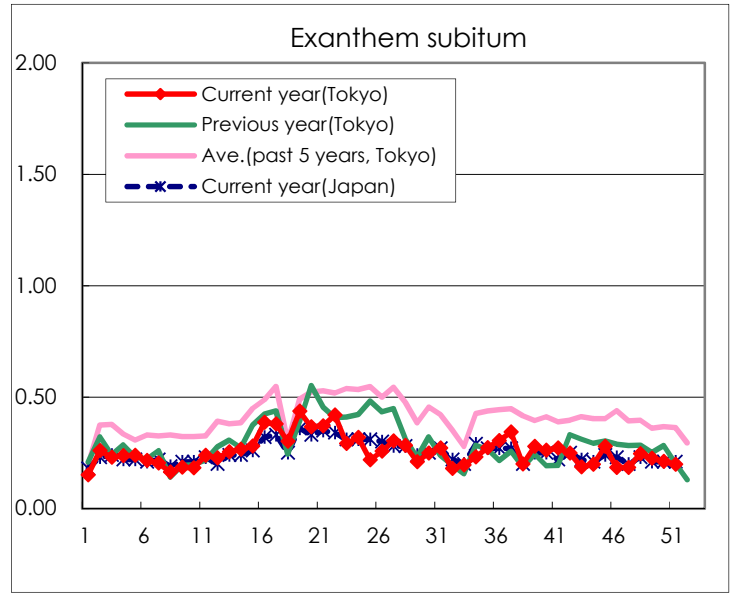
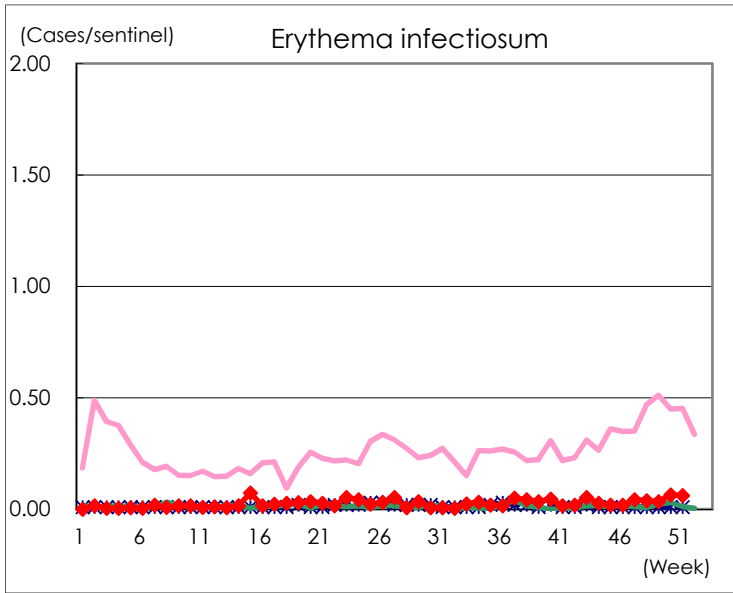
Number of patients with the diseases to be reported  
by the designated clinics and hospitals

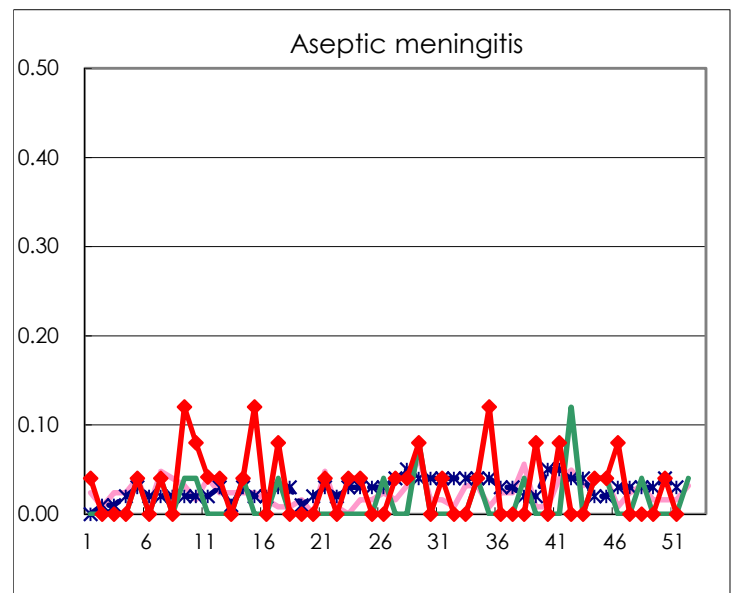
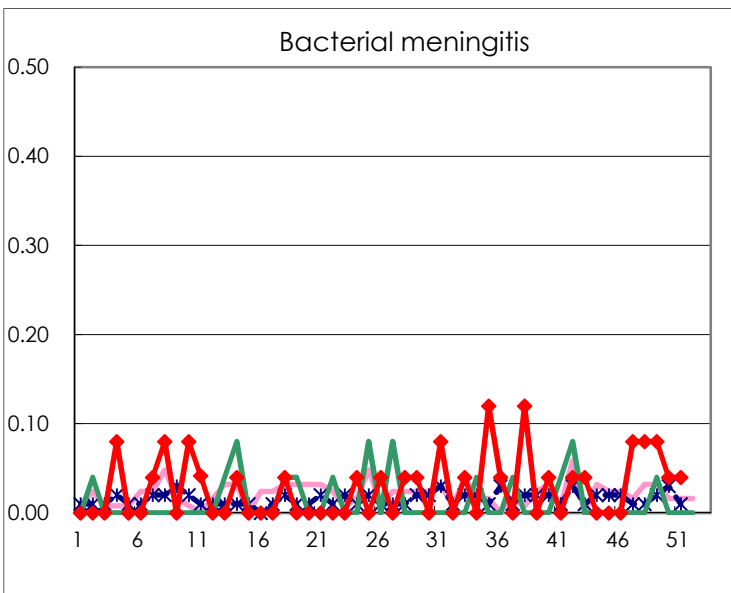
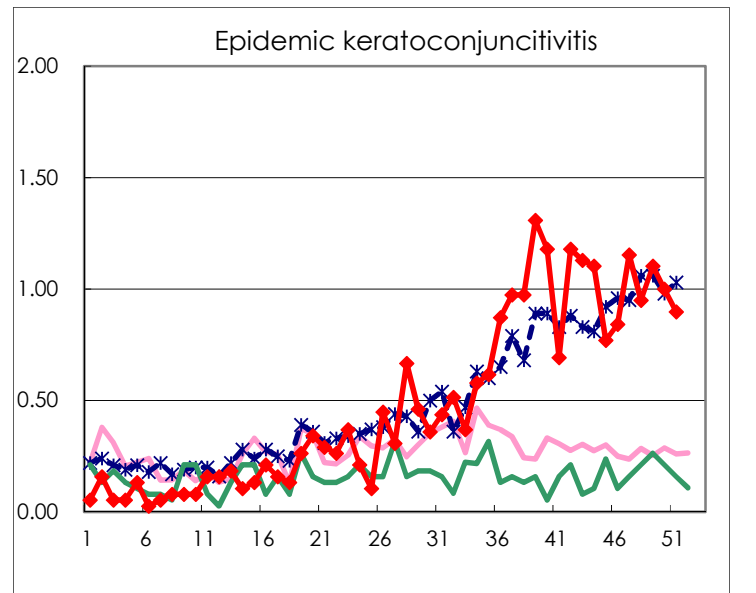
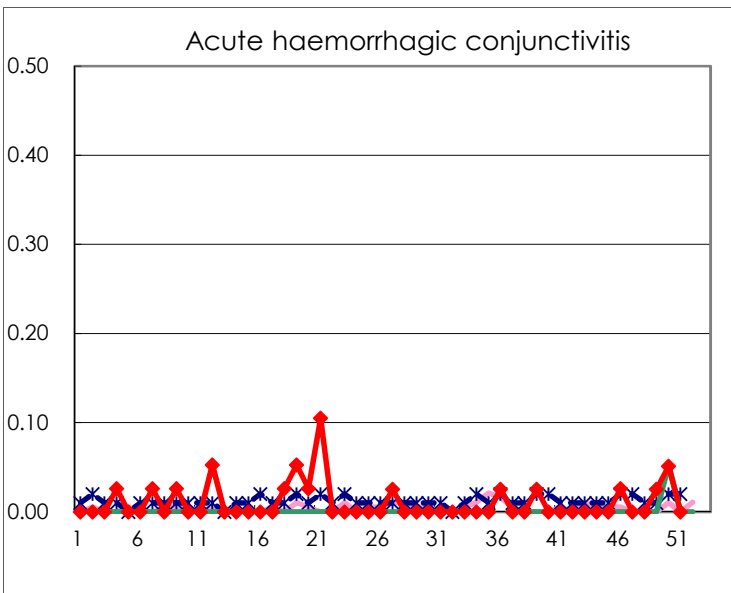
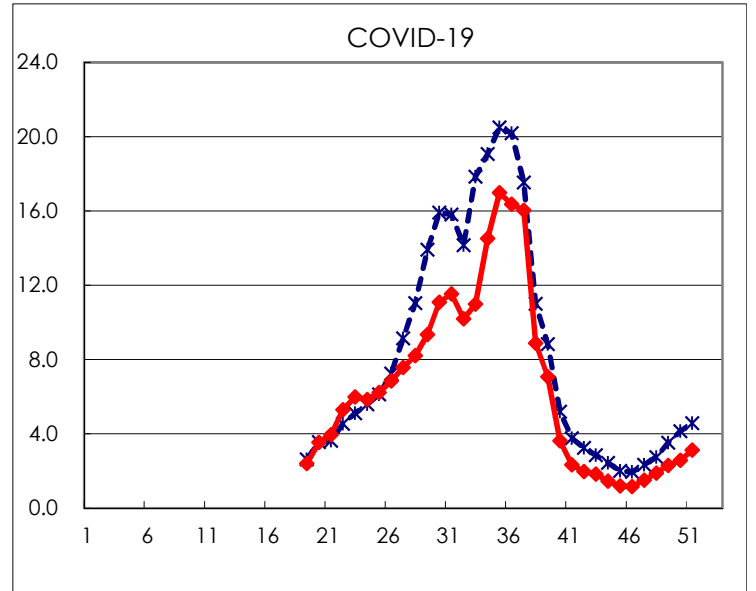
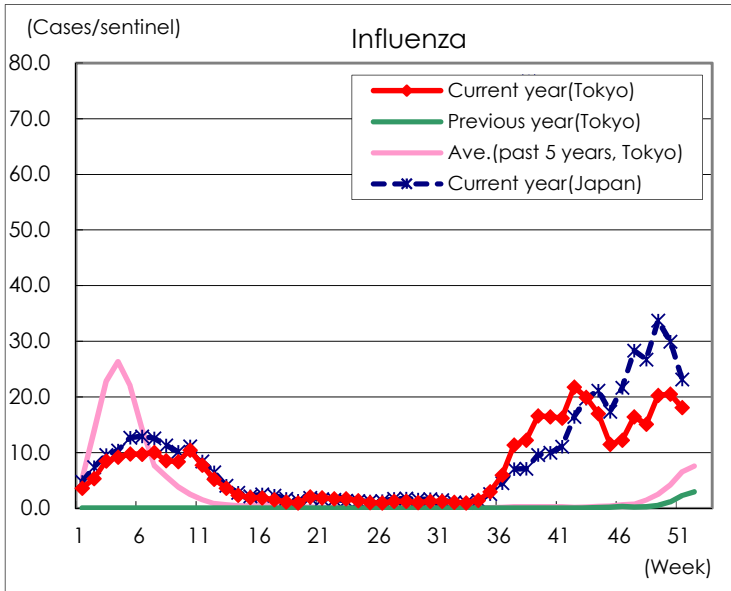
Diseases	Tokyo				
	48th	49th	50th	51st	/sentinel
Respiratory syncytial virus infection	5	8	8	6	0.02
Pharyngoconjunctival fever	948	842	877	711	2.72
Group A streptococcal pharyngitis	1,397	1,631	1,579	1,510	5.79
Infectious gastroenteritis	1,876	2,325	2,676	2,824	10.82
Chickenpox	57	43	80	52	0.20
Hand, foot, and mouth disease	118	111	97	87	0.33
Erythema infectiosum	10	9	17	16	0.06
Exanthem subitum	64	59	55	52	0.20
Herpangina	10	4	9	7	0.03
Mumps	12	10	8	6	0.02
Kawasaki disease	2	1	8	1	0.00
Cold with exanthems	12	8	4	12	0.05
Influenza	6,259	8,405	8,477	7,486	18.08
COVID-19	784	955	1,069	1,296	3.13
Acute hemorrhagic conjunctivitis		1	2		
Epidemic keratoconjunctivitis	37	43	39	35	0.90
Bacterial meningitis	2	2	1	1	0.04
Aseptic meningitis			1		
Mycoplasma pneumonia	6	3	2	3	0.12
Chlamydial pneumonia (excluding psittacosis)					
Infectious gastroenteritis (only by Rotavirus)	1	1			
Influenza-Associated Hospitalizations	39	48	56	55	2.20
COVID-19-Associated Hospitalizations	56	61	68	125	5.00

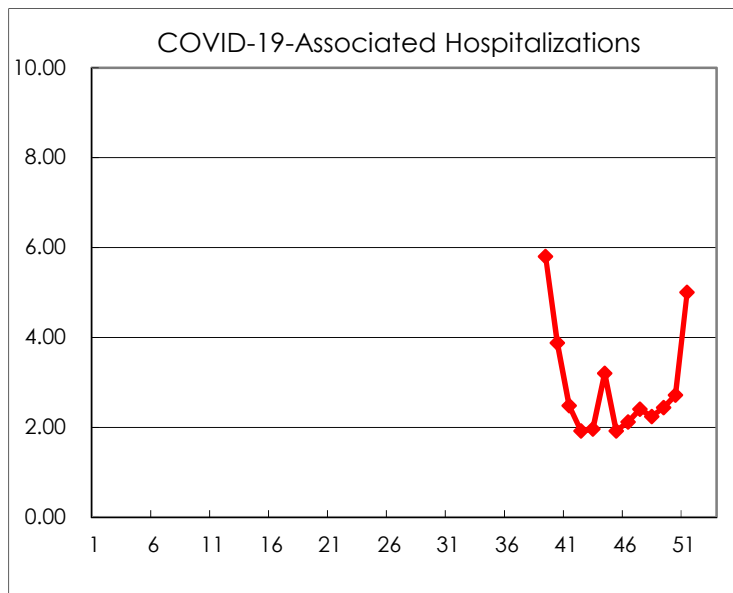
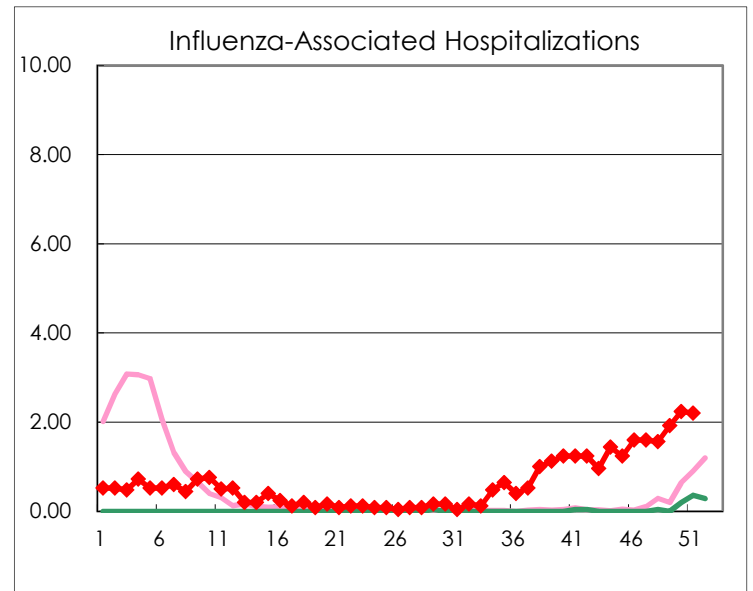
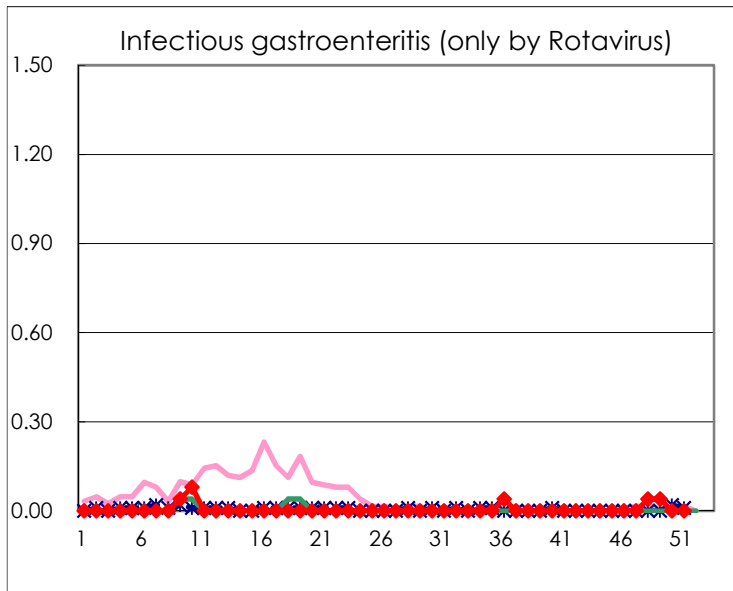
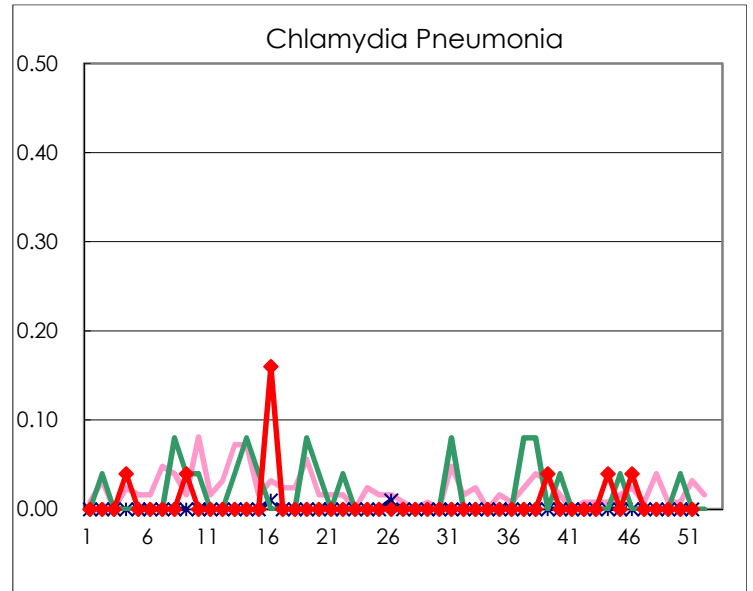
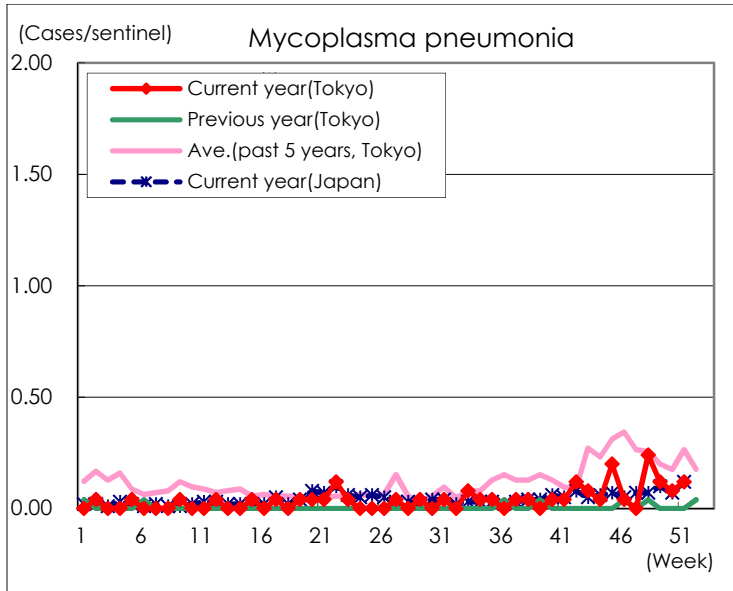
( Blank means 0. )

# Disease Trend Graph (weekly reported cases per sentinel in comparison)









Number of sentinel facilities for weekly reporting		
Types of sentinels	Number of sentinels	Sentinels having reported
Pediatric	264	261
Influenza COVID-19	419	414
Ophthalmic	39	39
Specially-designated	25	25