
INFECTIOUS DISEASES WEEKLY REPORT

TOKYO IDWR

Tokyo Metropolitan Infectious Disease Surveillance Center

9 January 2024 / Number 52
(12/25 ~ 12/31)

Surveillance System in Tokyo, Japan

The infectious diseases which all physicians must report
All physicians must report to health centers the incidence of the diseases which are shown at page one. Health centers electronically report the individual cases to Tokyo Metropolitan Infectious Disease Surveillance Center.

The infectious diseases required to be reported by the sentinels
The numbers of patients who visit the sentinel clinics or hospitals during a week are reported to health centers in Tokyo. And they electronically report the numbers to Tokyo Metropolitan Infectious Disease Surveillance Center. We have about 500 sentinel clinics and hospitals in Tokyo.

Tokyo Metropolitan Institute of Public Health

TEL:81-3-3363-3213 FAX:81-3-5332-7365

e-mail:tmiph@section.metro.tokyo.jp

URL:idsc.tmiph.metro.tokyo.lg.jp/

Number of patients with the diseases which all physicians must report

Category	Diseases	Tokyo					Japan		
		49th	50th	51st	52nd	Cum 2023	52nd	Cum 2023	
I	Ebola hemorrhagic fever								
	Crimean-Congo hemorrhagic fever								
	Smallpox								
	South American hemorrhagic fever								
	Plague								
	Marburg disease								
	Lassa fever								
II	Acute poliomyelitis								
	Tuberculosis	45	37	54	34	2,031	225	14,694	
	Diphtheria								
	Severe Acute Respiratory Syndrome(SARS)								
	Middle East Respiratory Syndrome (MERS)								
	Avian influenza H5N1								
	Avian influenza H7N9								
III	Cholera					2		2	
	Shigellosis					9	1	47	
	Enterohemorrhagic Escherichia coli infection	8	10	6	5	441	23	3,811	
	Typhoid fever					8	1	38	
	Paratyphoid fever					3		9	
IV	Hepatitis E	3	5	1	7	166	15	552	
	West Nile fever								
	Hepatitis A		1			13	1	55	
	Echinococcosis							13	
	Mpox	1	3		1	168	1	225	
	Yellow fever								
	Psittacosis							8	
	Omsk hemorrhagic fever								
	Relapsing fever							23	
	Kyasanur forest disease								
	Q fever							1	
	Rabies								
	Coccidioidomycosis							4	
	Zika virus infection							2	
	Severe Fever with Thrombocytopenia Syndrome							2	133
	Hemorrhagic fever with renal syndrome								
	Western equine encephalitis								
	Tick-borne encephalitis								
	Anthrax								
	Chikungunya fever					1			7
	Scrub typhus(Tsutsugamushi disease)	1	1			10	20	434	
	Dengue fever					44	3	175	
	Eastern equine encephalitis								
	Avian influenza (excluding H5N1 and H7N9)								
	Nipah virus infection								
	Japanese spotted fever					1			501
	Japanese encephalitis								6
	Hantavirus pulmonary syndrome								
	Herpes B virus infection								
	Glanders								
	Brucellosis					1			2
	Venezuelan equine encephalitis								
	Hendra virus infection								
Epidemic typhus									
Botulism									
Malaria	2	1			14	1	36		
Tularemia									
Lyme disease					1			29	
Lyssavirus infection(excluding rabies)									
Rift valley fever									
Melioidosis									
Legionellosis	4	3	6		168	24	2,271		
Leptospirosis					5			49	
Rocky mountain spotted fever									

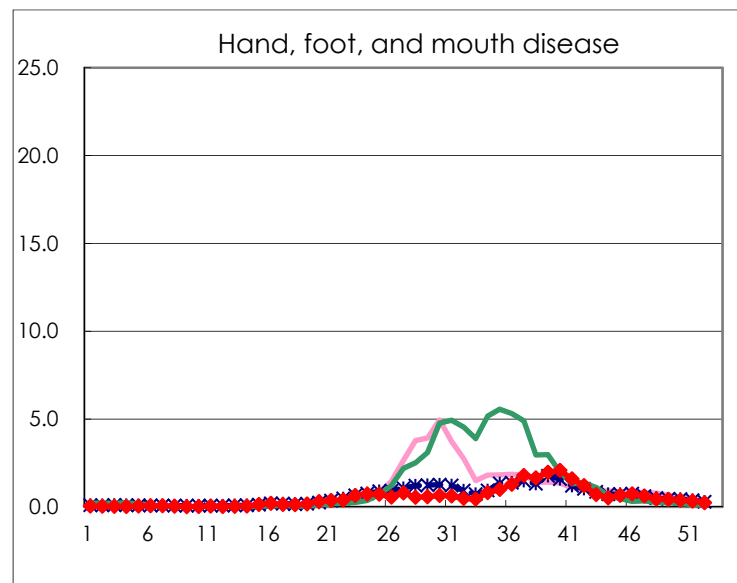
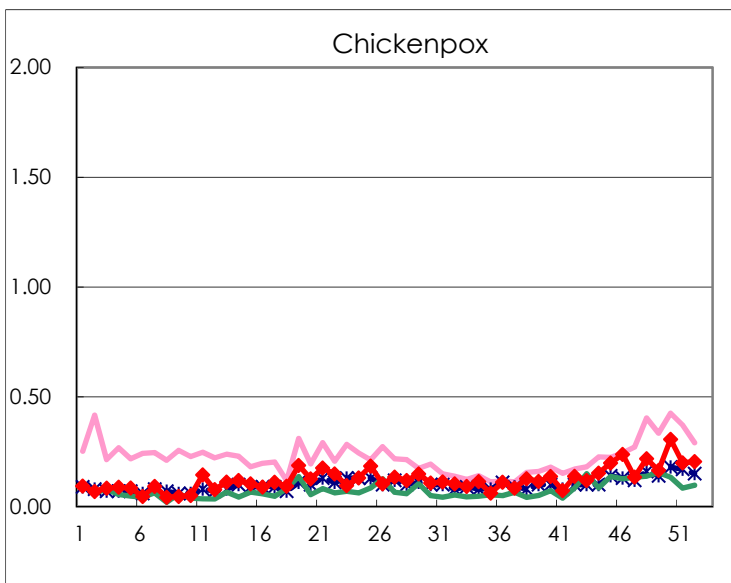
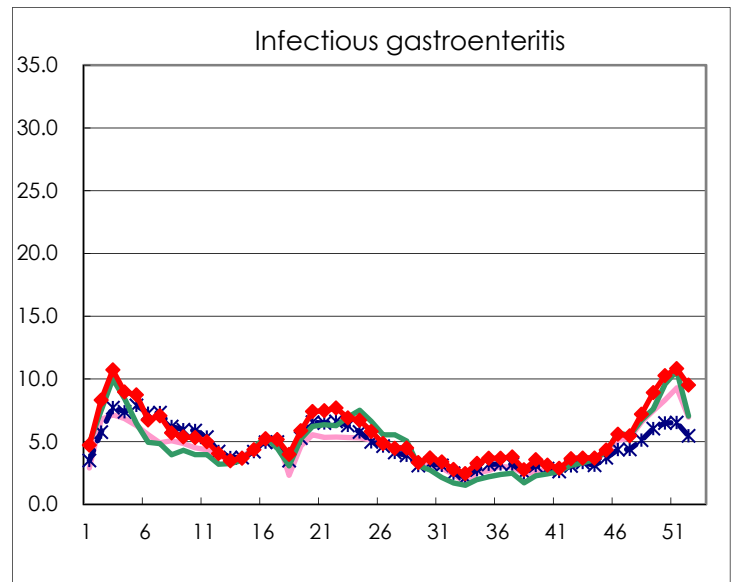
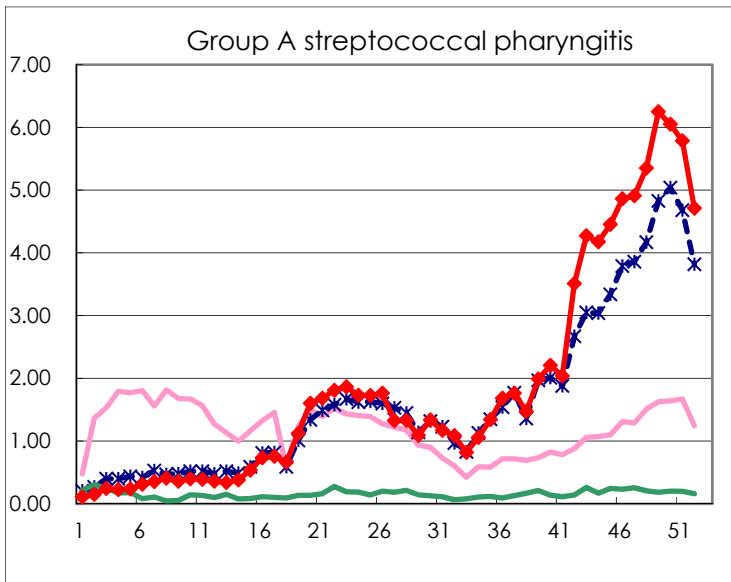
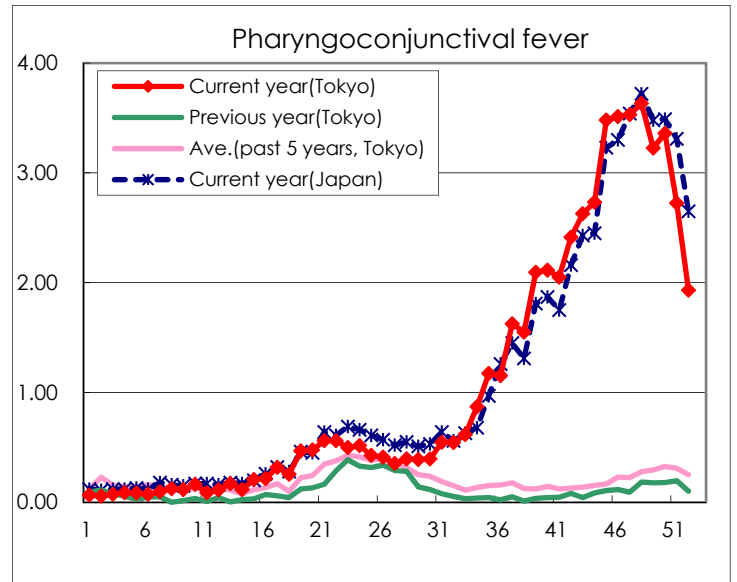
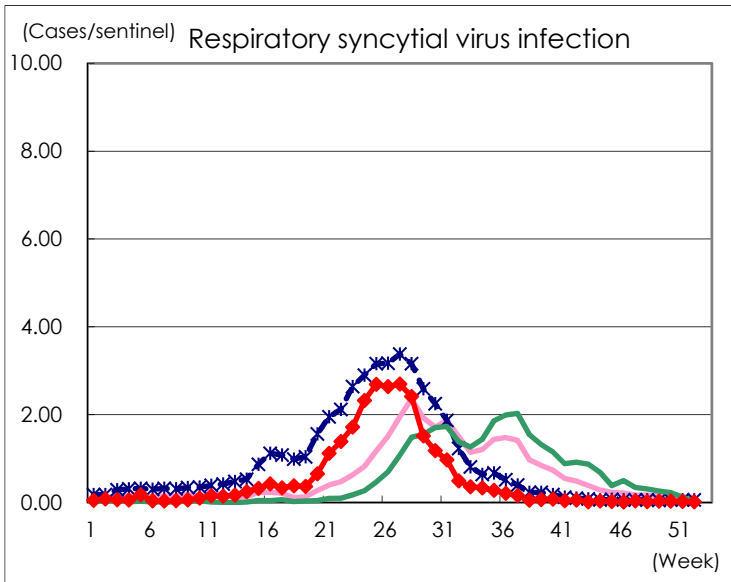
Category	Diseases	Tokyo					Japan	
		49th	50th	51st	52nd	Cum 2023	52nd	Cum 2023
V	Amebiasis	1	3			88	5	485
	Viral hepatitis(excluding hepatitis A and E)		1			43	3	242
	CRE infection	3	4	9	3	228	24	2,092
	Acute Flaccid Paralysis (excluding Acute poliomyelitis)					6		56
	Acute encephalitis(excluding JE and WNE)		3	1	2	44	8	643
	Cryptosporidiosis					1	2	16
	Creutzfeldt-Jakob disease				1	20	5	167
	Severe invasive streptococcal infections(TSLs)	6	4	8	1	141	22	941
	Acquired immunodeficiency syndrome (AIDS)	5	9	9	5	301	12	943
	Giardiasis		1		1	12	1	39
	Invasive <i>Haemophilus influenzae</i> disease	1	3	1	3	53	10	559
	Invasive meningococcal disease		1			4		21
	Invasive pneumococcal disease	6	8	8	3	218	57	1,959
	Varicella (limited to hospitalized case)	2				59	6	400
	Congenital rubella syndrome							
	Syphilis	82	79	65	57	3,695	138	14,906
	Disseminated cryptococcosis		1			17	2	171
	Tetanus	1				7	2	109
	Vancomycin-resistant <i>S. aureus</i> infection							
	Vancomycin-resistant <i>Enterococcus</i> infection					9	1	114
Pertussis		4	1	1	116	9	1,009	
Rubella					4		12	
Measles	2	1			10		28	
MDRA infection					3		15	

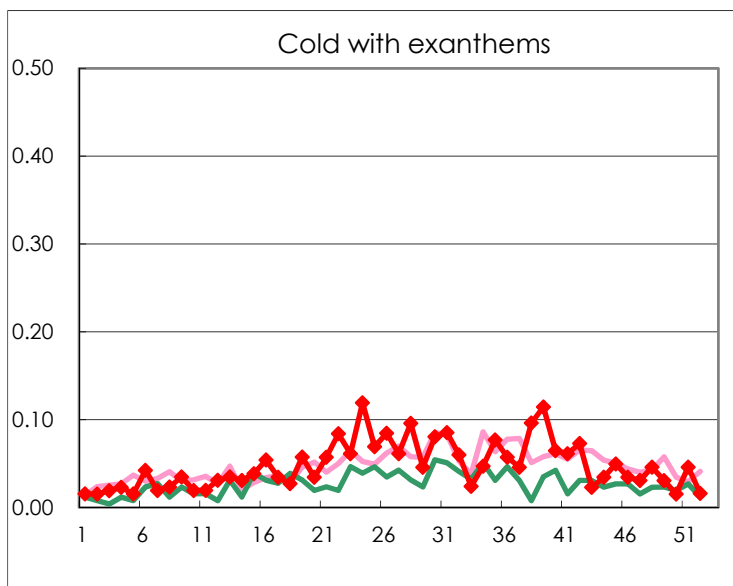
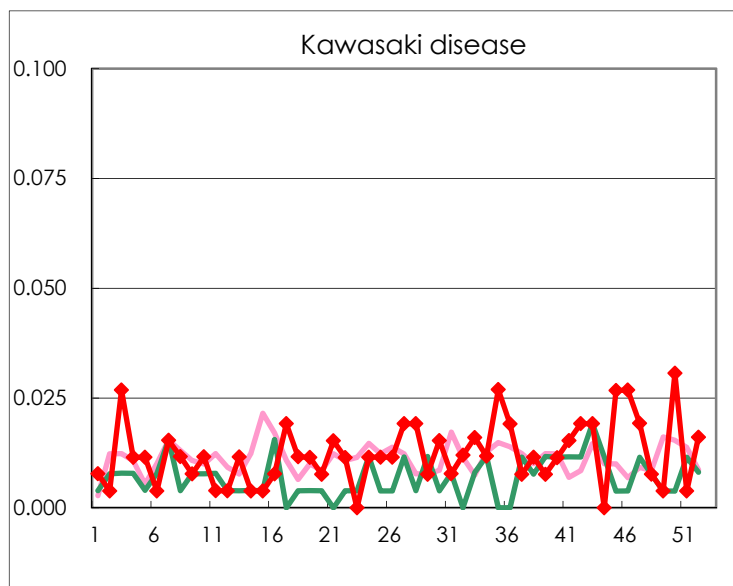
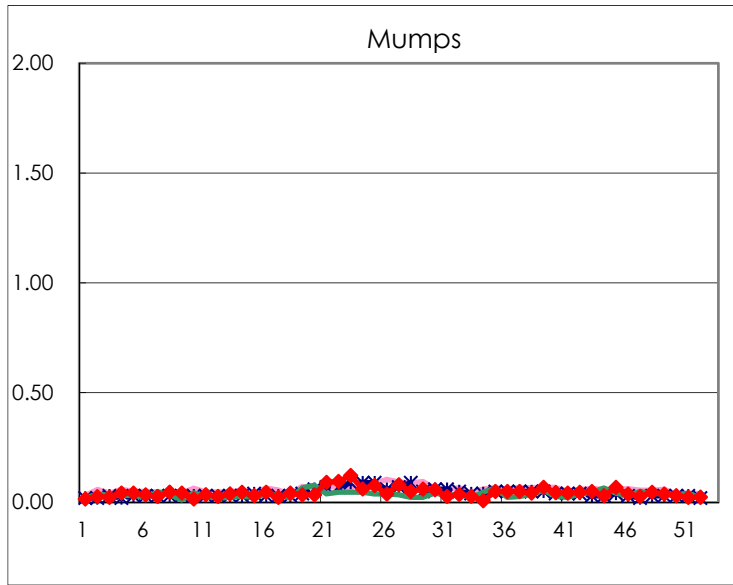
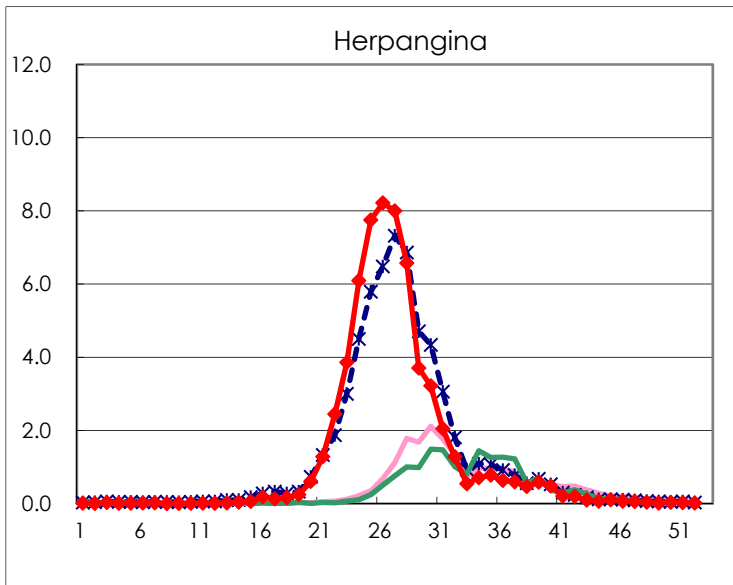
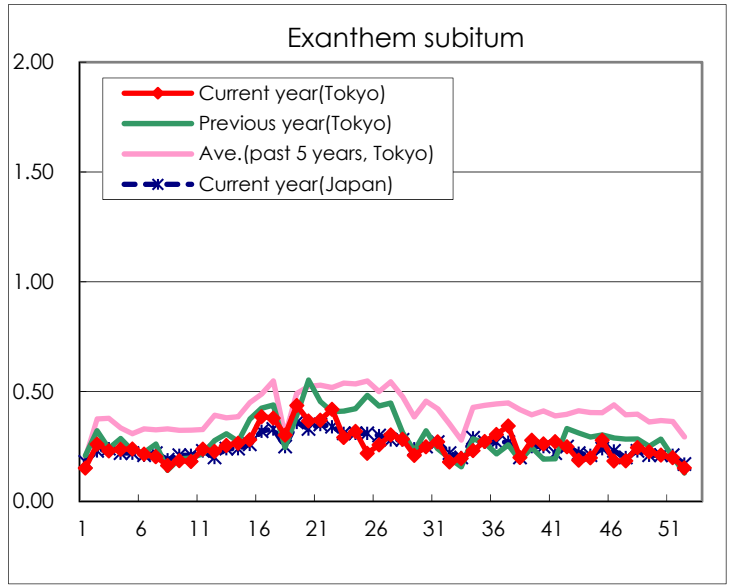
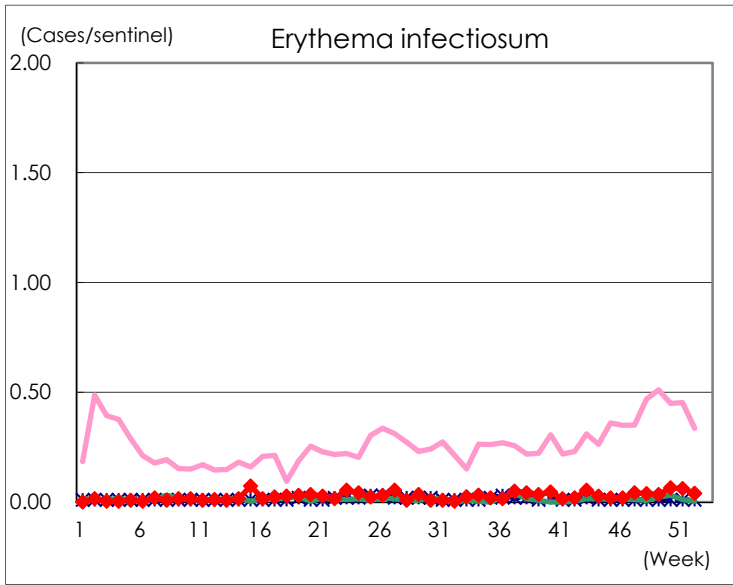
Number of patients with the diseases to be reported
by the designated clinics and hospitals

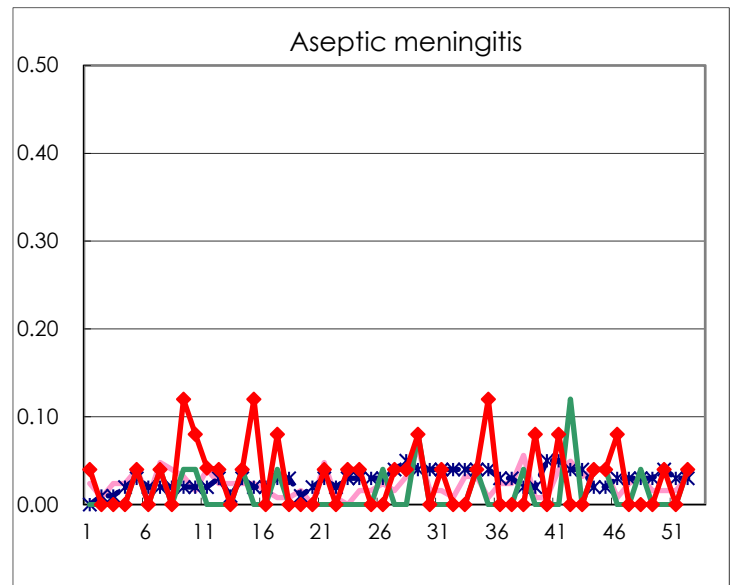
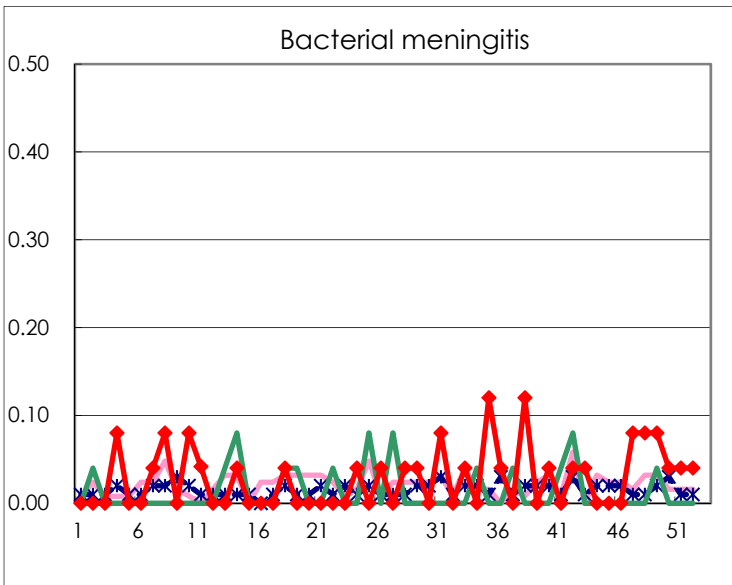
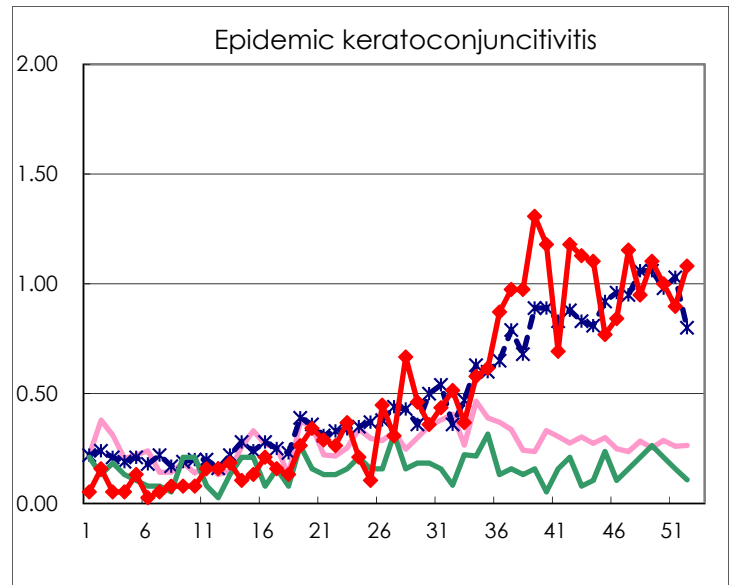
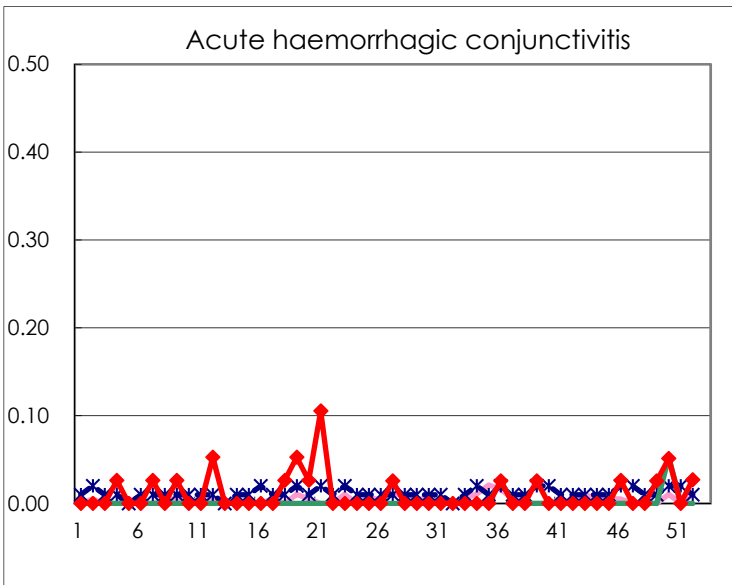
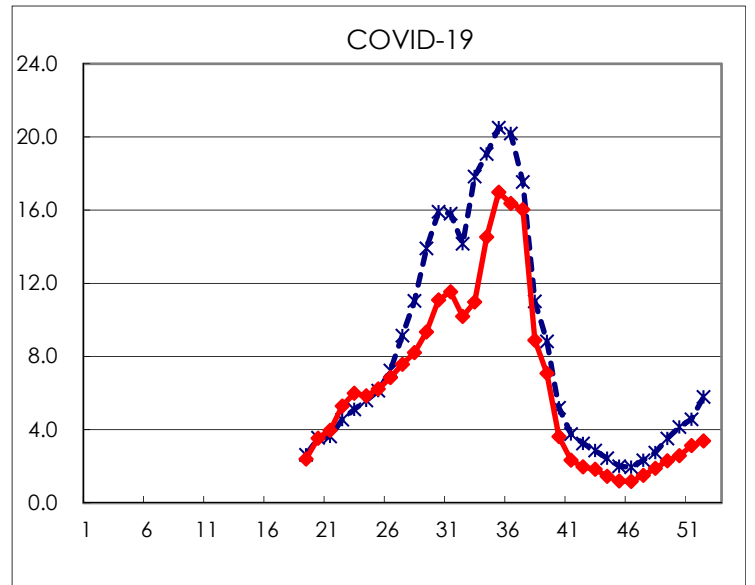
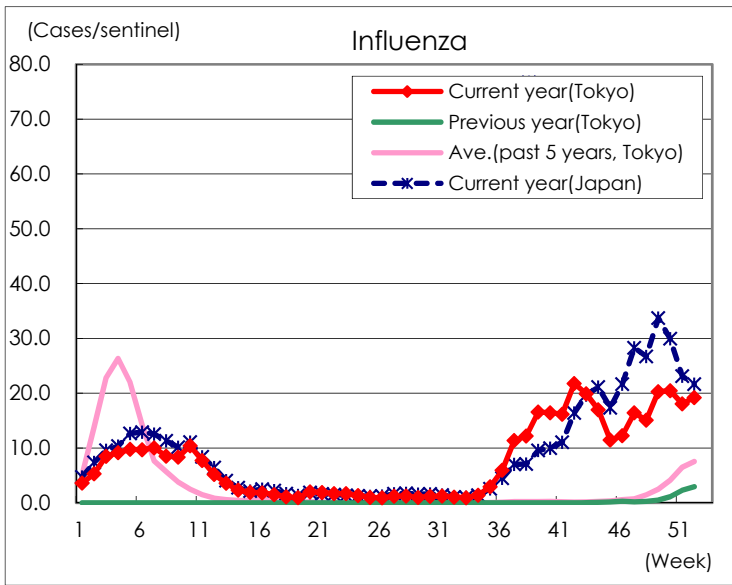
Diseases	Tokyo				
	49th	50th	51st	52nd	/sentinel
Respiratory syncytial virus infection	8	8	6	4	0.02
Pharyngoconjunctival fever	842	877	711	481	1.93
Group A streptococcal pharyngitis	1,631	1,579	1,510	1,173	4.71
Infectious gastroenteritis	2,325	2,676	2,824	2,365	9.50
Chickenpox	43	80	52	51	0.20
Hand, foot, and mouth disease	111	97	87	60	0.24
Erythema infectiosum	9	17	16	10	0.04
Exanthem subitum	59	55	52	38	0.15
Herpangina	4	9	7	4	0.02
Mumps	10	8	6	6	0.02
Kawasaki disease	1	8	1	4	0.02
Cold with exanthems	8	4	12	4	0.02
Influenza	8,405	8,477	7,486	7,650	19.22
COVID-19	955	1,069	1,296	1,348	3.39
Acute hemorrhagic conjunctivitis	1	2		1	0.03
Epidemic keratoconjunctivitis	43	39	35	40	1.08
Bacterial meningitis	2	1	1	1	0.04
Aseptic meningitis		1		1	0.04
Mycoplasma pneumonia	3	2	3		
Chlamydial pneumonia (excluding psittacosis)					
Infectious gastroenteritis (only by Rotavirus)	1			1	0.04
Influenza-Associated Hospitalizations	48	56	55	69	2.76
COVID-19-Associated Hospitalizations	61	68	125	98	3.92

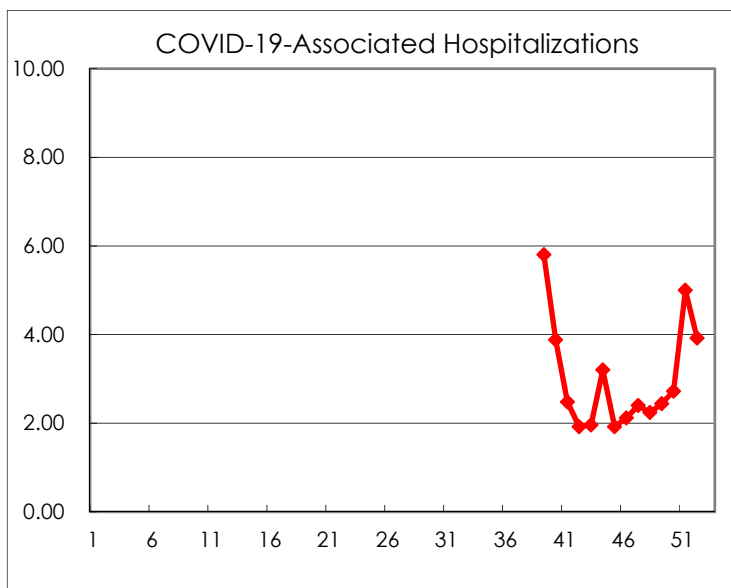
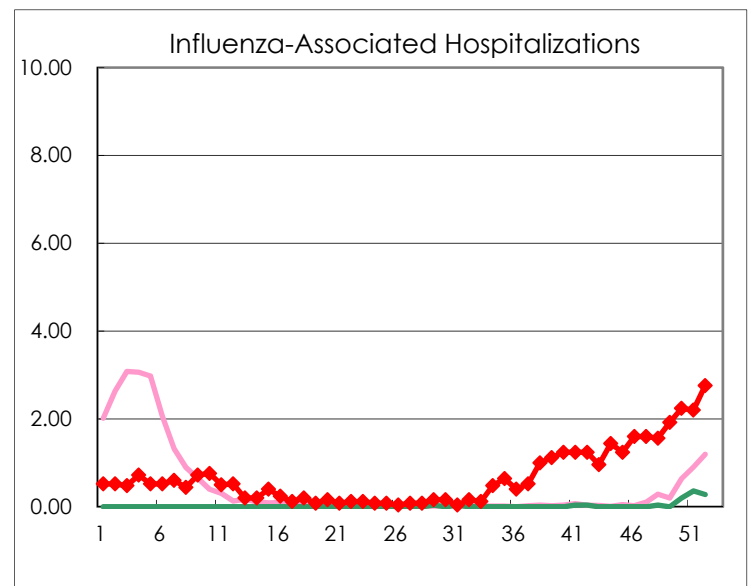
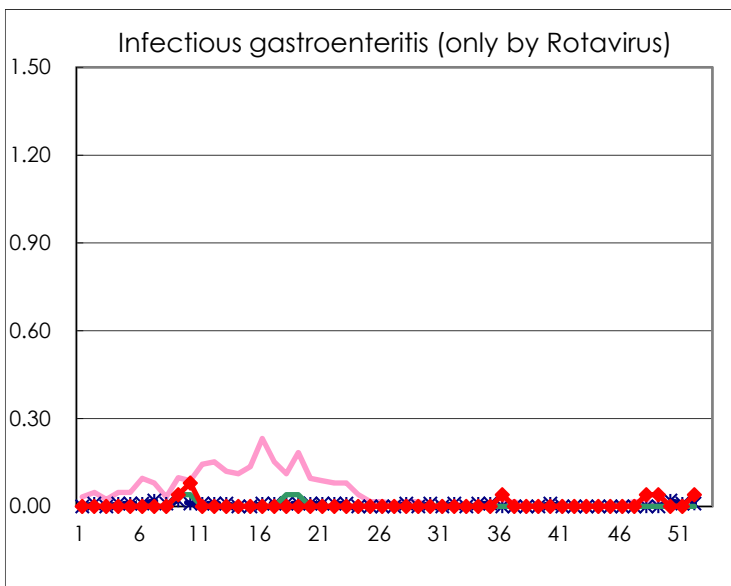
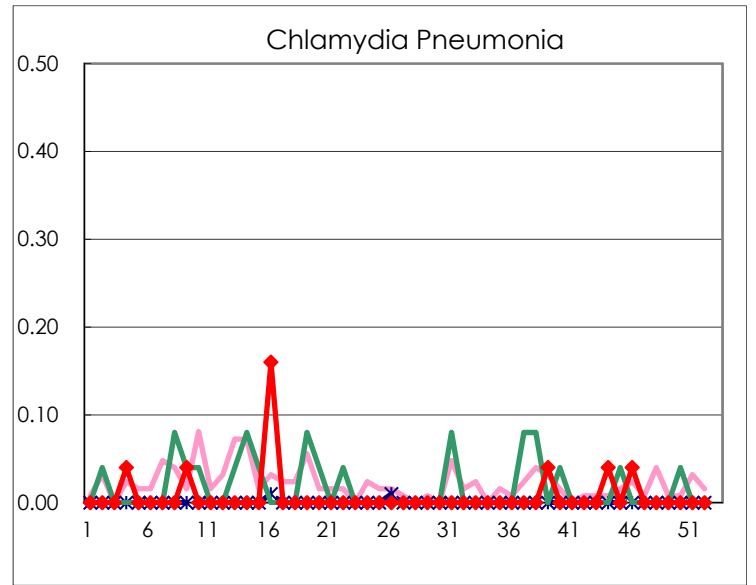
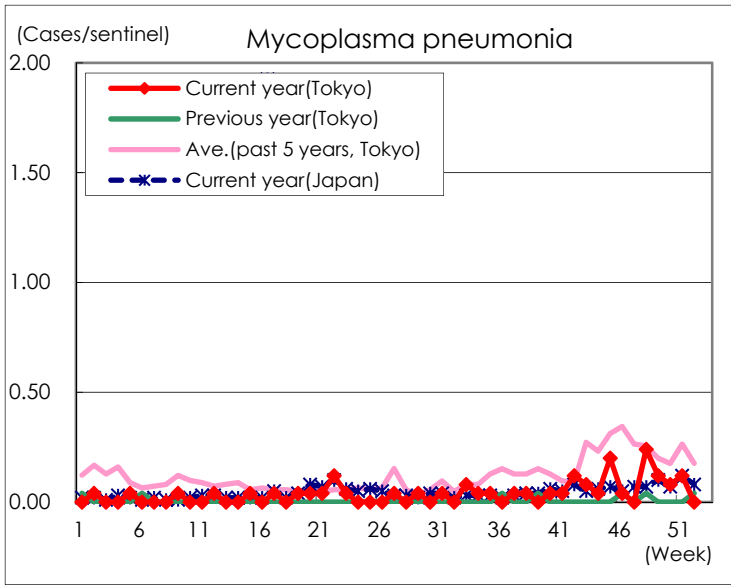
(Blank means 0.)

Disease Trend Graph (weekly reported cases per sentinel in comparison)









Number of sentinel facilities for weekly reporting		
Types of sentinels	Number of sentinels	Sentinels having reported
Pediatric	264	249
Influenza COVID-19	419	398
Ophthalmic	39	37
Specially-designated	25	25